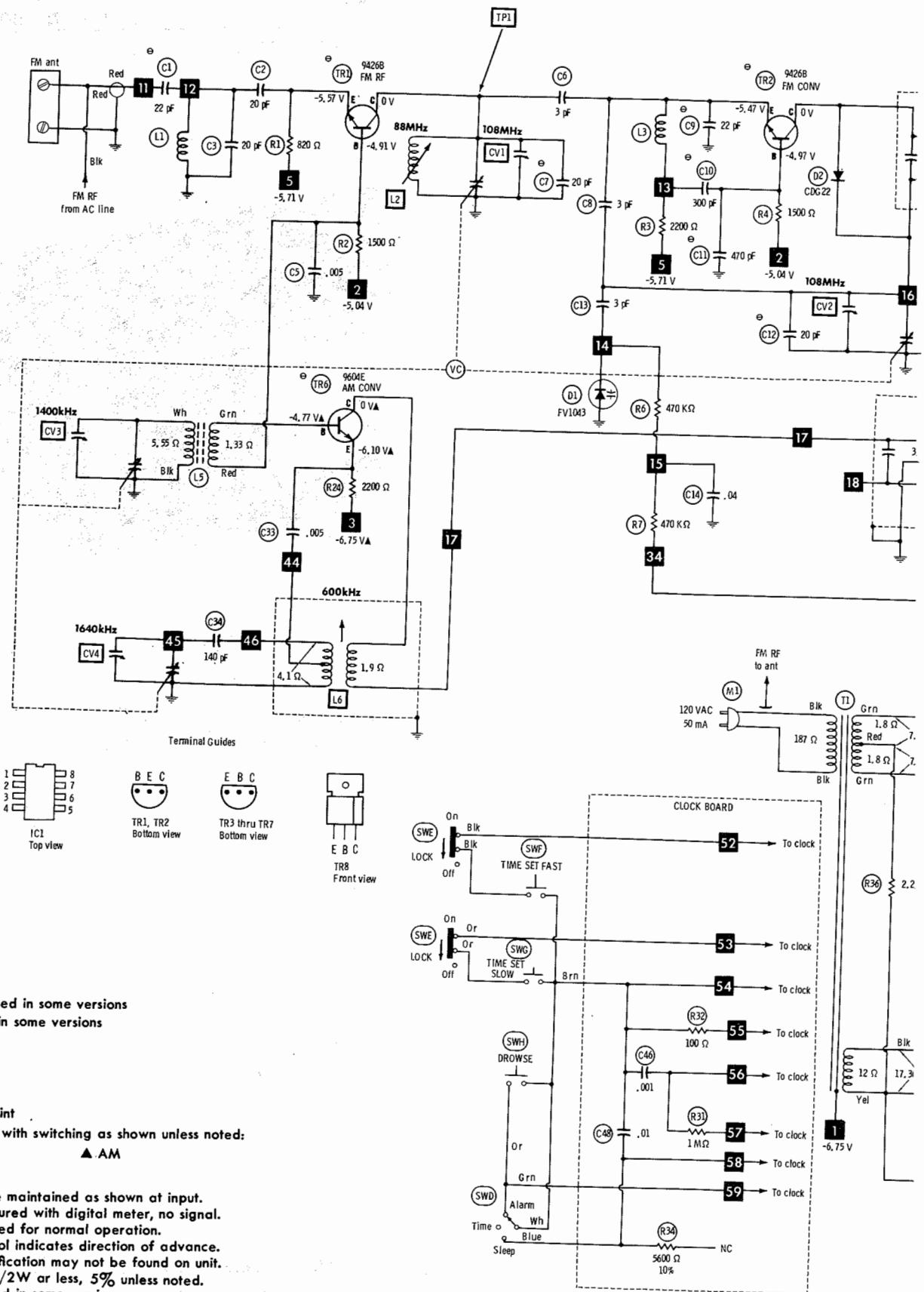


**KEN-TECH
MODEL R-1000A**

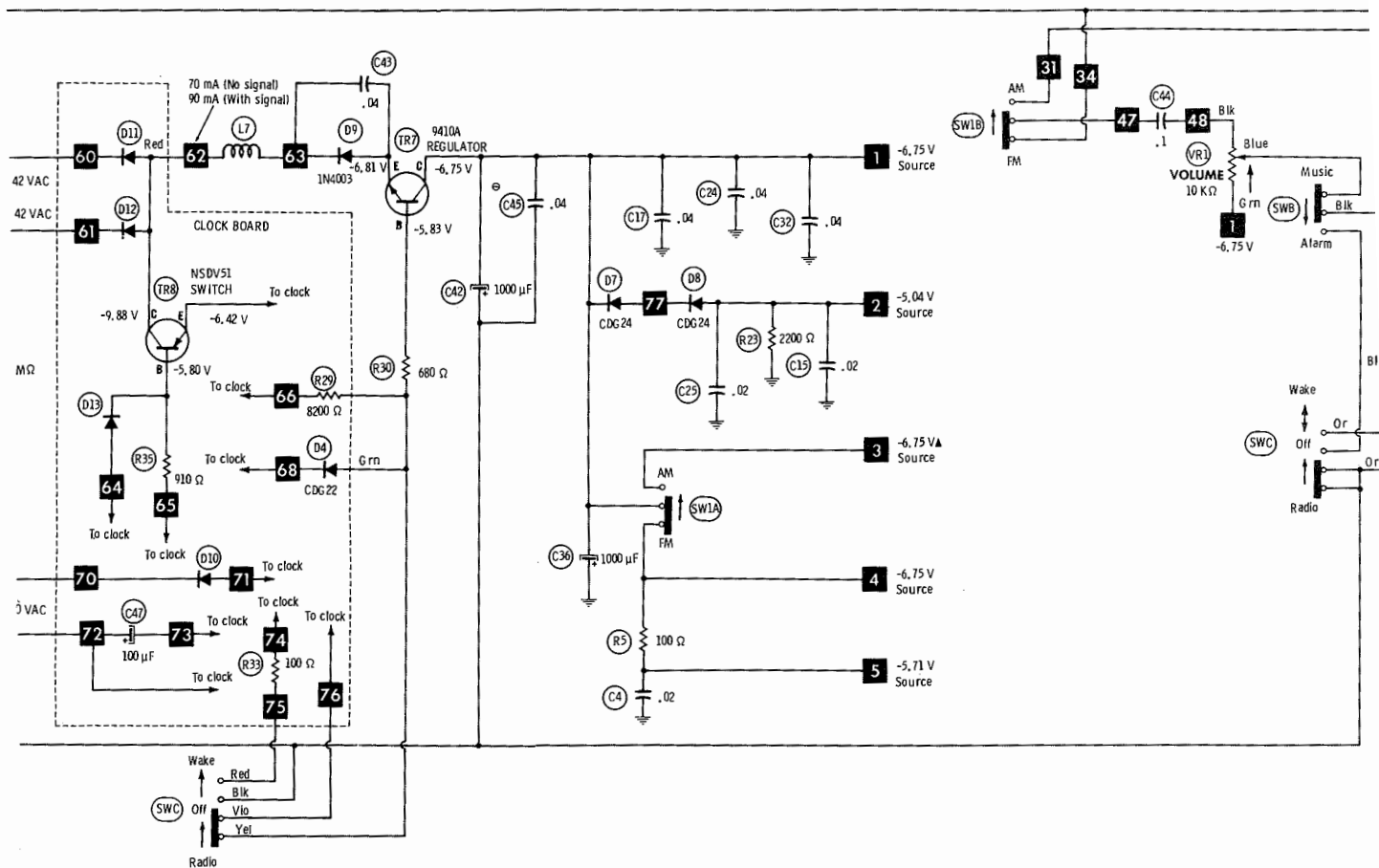
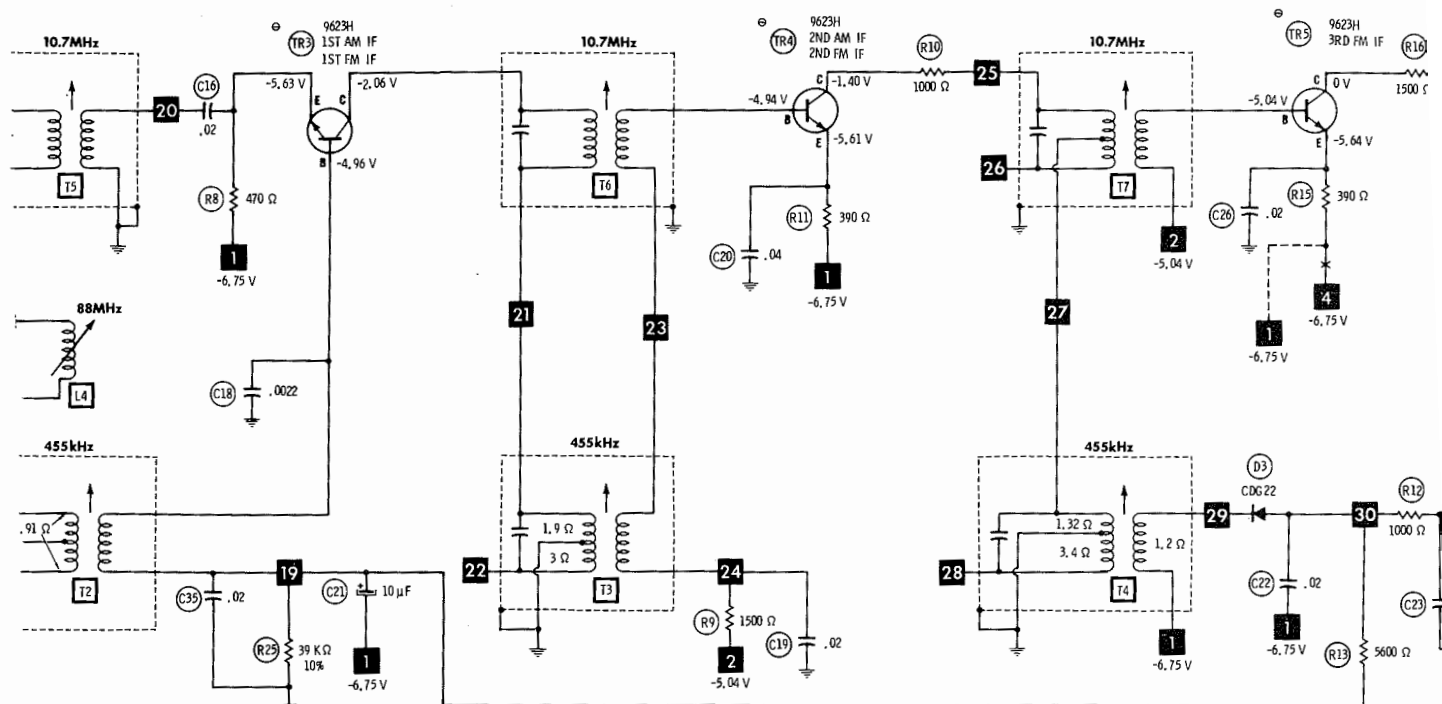


- Circuitry not used in some versions
 - - - Circuitry used in some versions
 - ⊕ See parts list
 - * Nominal value
 - ⊥ Ground
 - Chassis
 - Common tie point
- Measurements with switching as shown unless noted:
▲ AM

Supply voltage maintained as shown at input.
Voltages measured with digital meter, no signal.
Controls adjusted for normal operation.
Arrow at control indicates direction of advance.
Terminal identification may not be found on unit.
Resistors are 1/2W or less, 5% unless noted.
Value in () used in some versions.

A PHOTOFAC STANDARD NOTATION SCHEMATIC
WITH **CIRCUITRACE**

© Howard W. Sams & Co., Inc. 1977



ults)

ON No.	RCA PART No.	SPRAGUE PART No.	SYLVANIA PART No.
SK3126	RT-262	ECG610	
SK3126	RT-262	ECG610	
SK3100	RT-218	ECG177	
SK3100	RT-218	ECG177	
SK3100	RT-218	ECG177	
SK3088	RT-263	ECG109	
SK3088	RT-263	ECG109	
SK3100	RT-218	ECG177	
SK3100	RT-218	ECG177	
SK3030	RT-213	ECG116	
SK3030	RT-213	ECG116	
SK3030	RT-213	ECG116	
SK3100	RT-218	ECG177	
SK3018	RT-107	ECG108	
SK3018	RT-107	ECG108	
SK3018	RT-107	ECG108	
SK3018	RT-107	ECG108	
SK3122	RT-172	ECG108	
SK3122	RT-172	ECG108	
SK3122	RT-172	ECG108	
SK3122	RT-172	ECG108	
SK3122	RT-172	ECG108	
SK3018	RT-107	ECG108	
SK3018	RT-107	ECG108	
SK3018	RT-308	ECG123A	

TA

SPRAGUE PART No.		
Q-LINE		
GENERAL LINE		
QV1-41	EV-1222	
QV1-41	EV-1222	
QV1-179	EV-1160	
QV1-41	EV-1222	
QV1-41	EV-1222	
QV1-41	TVA-1130.6	
QV1-115	EV-1140	
QV1-179	EV-1160	
QV1-425	TVA-1207	

EMENT DATA

MALLORY PART No.	SPRAGUE PART No.	
	Q-LINE	GENERAL LINE
422	QC2-123	10TCC-Q22
420		10TCC-Q20
420		10TCC-Q20
420		10TCC-Q20
5012		TG-D50
250		10TCC-V33
3533		10TCC-Q20
420		10TCC-Q22
422		10TCC-V33
3533		10TCC-Q22
420	QC2-123	10TCC-Q20
330		10TS-T30
350		10TS-T50
347		10TS-T47
250		TG-D50
420		10TCC-Q20
422		10TCC-Q22
3533		10TCC-V33
140		5GA-S40
5012	QC2-97	5GA-S40
5012		5GA-D22
140		5GA-S40
222		5GA-S40
5012		5GA-S40
5012		5GA-S40
5012		5GA-S40
5012		5GA-S40
5012		5GA-S40
5012		5GA-S40
250	QC2-123	TG-D50
250		TG-D50
330		10TS-T30
350		10TS-T50

PARTS LIST AND DESCRIPTION (CONTINUED)

(When ordering parts, state Model, Part Number, and Description.)

CAPACITORS (cont)

ITEM No.	RATING	MFR. PART No.	REPLACEMENT DATA				
			CENTRALAB PART No.	CORNELL- DUBILIER PART No.	MALLORY PART No.	SPRAGUE PART No.	
C31	300 500	(1)	DD-301	GP300	GP330	QC2-123	10TS-T30
C32	.04		DD-501	GP500	GP350		10TS-T50
C33	.005		DC-502	MGP005	GP140		5GA-S40
C34	140		DTZ-150		TA250		TG-D50
C35	.02		UK50-223		CN0315		10TCC-T15
C37	.005		DC-502	MGP005	MAG5012		
C41	.04				TA250		TG-D50
C43	.04				GP140		5GA-S40
C44	.1 50V			WMF05P1	GP140		5GA-S40
C45	.04				EWFO5010		431P1049R5
C46	.001	(1)	CK-104		GP140	QC2-141	5GA-S40
C48	.01		DD-102	MGP01	MAG5001		10TS-D10
CV1			DC-103		GP210		TG-S10
CV2					TA110		
CV3							
CV4							
VC	Tuning Gang						

(1) Used in some versions.

(2) Part of Tuning Gang.

CONTROLS (All wattages 1/2 watt, or less, unless listed)

ITEM No.	FUNCTION	RESIST- ANCE	REPLACEMENT DATA			
			MFR. PART No.	CENTRALAB PART No.	CLAROSTAT PART No.	TRW PART No.
VR1	Volume	10K				

COILS (RF-IF)

ITEM No.	FUNCTION	REPLACEMENT DATA			REMARKS
		PART No.	OTHER IDENTIFICATION	MILLER PART No.	
L1	FM Antenna Input				
L2	FM RF				
L3	RF Choke				
L4	FM Oscillator				
L5	Loopstick				
L6	AM Oscillator		250045		
L7	Line Choke				
T2	1st AM IF				
T3	2nd AM IF				
T4	3rd AM IF				
T5	1st FM IF		250012		
T6	2nd FM IF				
T7	3rd FM IF				
T8	Ratio Detector (Pri)				
T9	Ratio Detector (Sec)		250022		

TRANSFORMER (Power)

ITEM No.	RATING			REPLACEMENT DATA			NOTES
	PRI.	SEC. 1	SEC. 2	MFR. PART No.	THORDARSON PART No.	TRIAD PART No.	
T1	120V AC @ 50mA AC	7.43V AC @ 90mA DC	17.3V AC @ 50mA AC				

SPEAKER

ITEM No.	TYPE	REPLACEMENT DATA		NOTES
		MFR. PART No.	QUAM PART No.	
SP1	3" PM 8 Ohms		30A05Z8R	

MISCELLANEOUS

ITEM No.	PART NAME	PART No.	NOTES
SWB	Switch		Music/Alarm
SWC	Switch		Wake/Off/Radio
WSD	Switch		Alarm/Time/Sleep
SWF	Switch		Lock/On-Off
SWG	Switch		Time/Set/Fast
SWH	Switch		Time/Set/Slow
SWIA	Switch		Drowse
SW18	Switch		AM/FM

WIRING DATA

General-use Unshielded Hook-up Wire	Use BELDEN No. 8528 (Solid) Available in 13 Colors
Power Cord	Use BELDEN No. 8522 (Stranded) Available in 13 Colors
Low-loss Shielded Lead (Interconnection) .	Use BELDEN No. 17106 (Plastic) -6 Ft.
	17109 (Plastic) -9 Ft.
	Use BELDEN No. 8401 or 8421

FOLDER
SET 1693

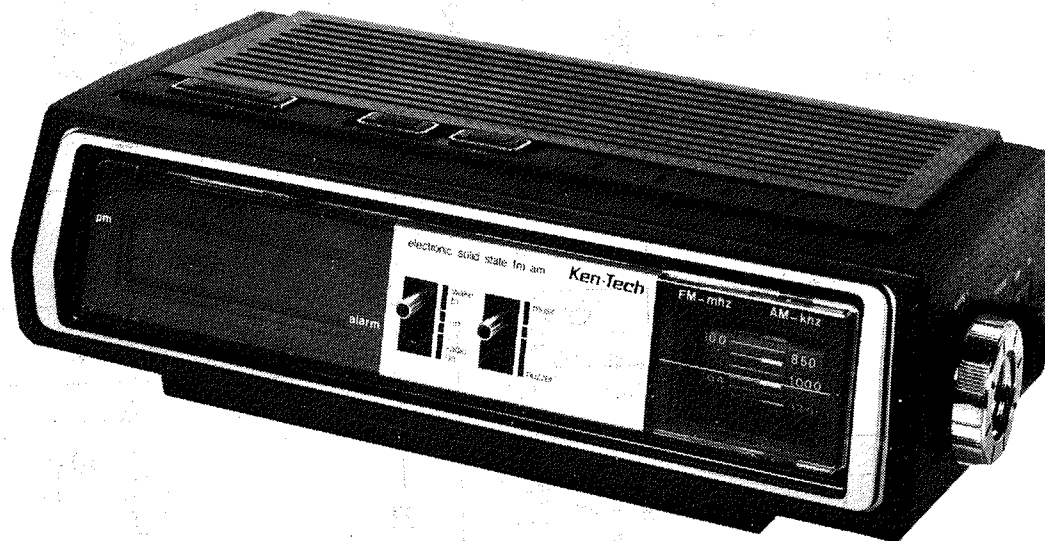
KEN-TECH
MODEL R-1000A

PHOTOFACT® Folder

with CIRCUITRACE®

KEN-TECH
MODEL R-1000A

For Supplier Address See PHOTOFACT Index



MODEL R-1000A

KEN-TECH
MODEL R-1000A

SET 1693 FOLDER 3

HOWARD W. SAMS & CO., INC. Indianapolis, Indiana 46206



The listing of any available replacement part herein does not constitute in any case a recommendation, warranty or guaranty by Howard W. Sams & Co., Inc., as to the quality and suitability of such replacement part. The numbers of these parts have been compiled from information furnished to Howard W. Sams & Co., Inc., by the manufacturers of the particular type of replacement part listed.

7PK1902

Reproduction or use, without express permission, of editorial or pictorial content, in any manner, is prohibited. No patent liability is assumed with respect to the use of the information contained herein. © 1977 Howard W. Sams & Co., Inc., Indianapolis, Indiana 46206. Printed in U. S. of America

DATE 11 -77

SET 1693 FOLDER 3

PARTS LIST AND DESCRIPTION

(When ordering parts, state Model, Part Number, and Description.)

SEMICONDUCTORS (Select replacement transistor for best results)

ITEM No.	TYPE No.	MFR. PART No.	REPLACEMENT DATA						
			GENERAL ELECTRIC PART No.	IR WORKMAN PART No.	MALLORY PART No.	MOTOROLA PART No.	RAYTHEON PART No.	RCA PART No.	SPRAGUE PART No.
D1	CF3	(1)	GE-90	D201	PTC311	HEPR2503	RE 195	SK3126	RT-262
D2	FW1043		GE-90	D201	PTC311	HEPR2503	RE 195	SK3126	RT-262
D3	CDG22		GE-300	D200	PTC214	HEPR0602	RE 52	SK3100	RT-218
D4	CDG22		GE-300	D200	PTC214	HEPR0602	RE 52	SK3100	RT-218
D5	CDG22		GE-300	D200	PTC214	HEPR0602	RE 52	SK3100	RT-218
D6	1N60		1N60	1N60	PTC206	HEPR9135	RE 47	SK3088	RT-263
D7	1N60		1N60	1N60	PTC206	HEPR9135	RE 47	SK3088	RT-263
D8	CDG22		GE-300	D200	PTC214	HEPR0602	RE 52	SK3100	RT-218
D9	CDG22		GE-300	D200	PTC214	HEPR0602	RE 52	SK3100	RT-218
D10	1N4003		GE-504A	5A40	PTC201	HEPR0052	RE 49	SK3030	RT-213
D11	1N4001		GE-504A	5A40	PTC201	HEPR0052	RE 49	SK3030	RT-213
D12	1N4001		GE-504A	5A40	PTC201	HEPR0052	RE 49	SK3030	RT-213
D13	CDG22		GE-300	D200	PTC214	HEPR0602	RE 52	SK3100	RT-218
IC1	LM386N	(1)	GE-86	TR-24	PTC121	HEPS0014	RE 10	SK3018	RT-107
TR1	9426B		GE-86	TR-24	PTC121	HEPS0014	RE 10	SK3018	RT-107
TR2	9426C		GE-86	TR-24	PTC121	HEPS0014	RE 10	SK3018	RT-107
TR3	9426C		GE-86	TR-24	PTC121	HEPS0014	RE 10	SK3018	RT-107
TR4	9623H		GE-20	TR-21	PTC123	HEPS0014	RE 10	SK3122	RT-172
TR5	9623G		GE-20	TR-21	PTC123	HEPS0014	RE 10	SK3122	RT-172
TR6	9623G		GE-20	TR-21	PTC123	HEPS0014	RE 10	SK3122	RT-172
TR7	9623H		GE-20	TR-21	PTC123	HEPS0014	RE 10	SK3122	RT-172
TR8	9623G		GE-20	TR-21	PTC123	HEPS0014	RE 10	SK3122	RT-172
TR9	9604E		GE-20	TR-24	PTC136	HEPS0014	RE 10	SK3018	RT-107
TR10	9604F		GE-20	TR-24	PTC136	HEPS0014	RE 10	SK3018	RT-107
TR11	9410A		GE-20	TR-70 *	PTC123	HEPS0015	RE 13	SK3018	RT-308
TR12	NSOU51		GE-20	TR-70 *	PTC123	HEPS0015	RE 13	SK3018	RT-308

* Lead configuration may vary from original.

(1) Used in some versions.

(11) 1.7 W @ 5.0 AMPS.

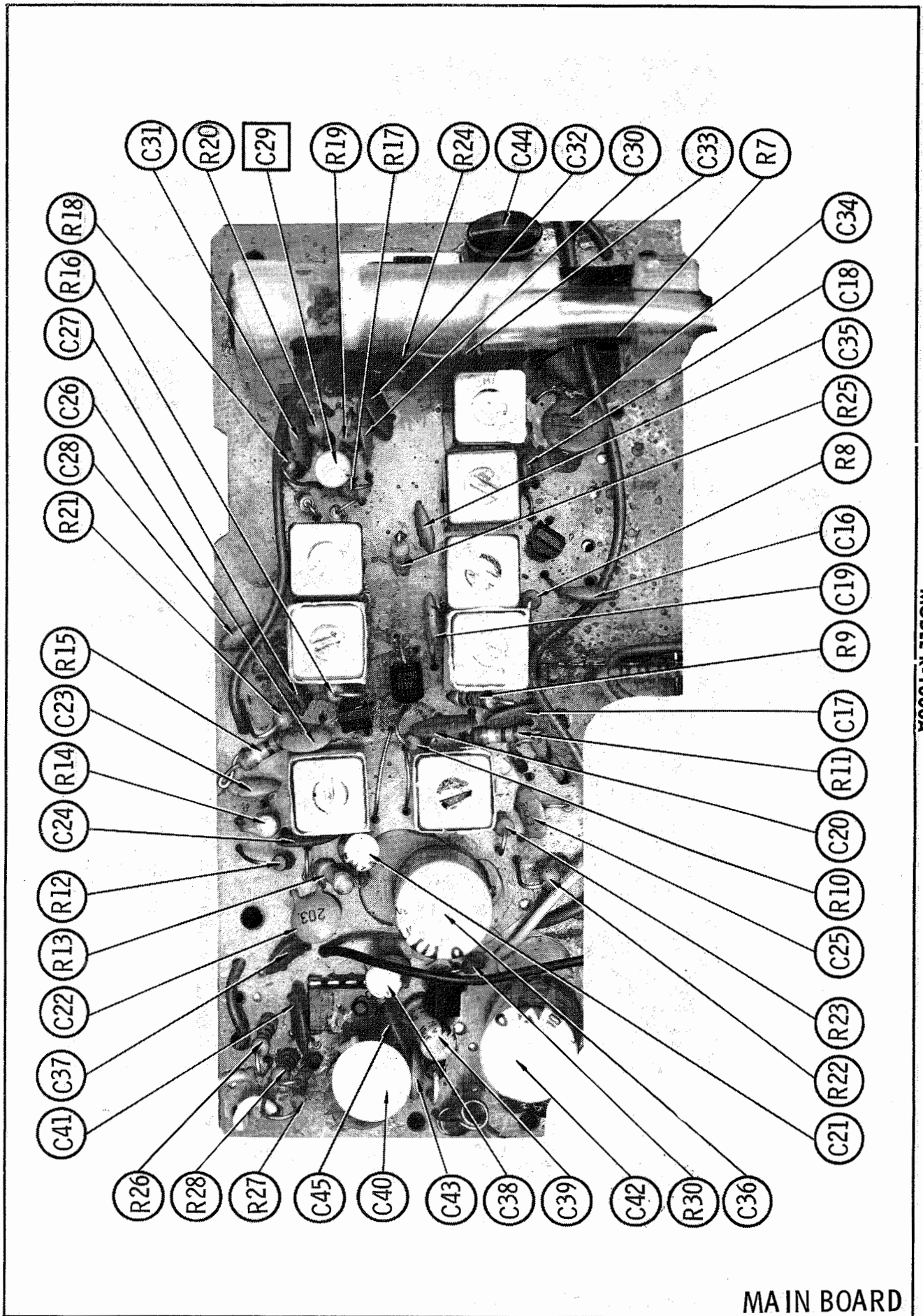
ELECTROLYTIC CAPACITORS

ITEM No.	RATING	REPLACEMENT DATA			
		MFRG. PART No.	CORNELL- DUBILIER PART No.	MALLORY PART No.	SPRAGUE
					Q-LINE
C21	10 10V	(1)	PC10-25	VTT10825	QV1-41
C29	10 10V		PC10-25	VTT10825	QV1-41
C36	1000 10V		PC1000-16	VTT1000L10	QV1-179
C38	10 10V		PC10-25	VTT10825	QV1-41
C39	10 10V		PC10-25	VTT10825	QV1-41
C40	200 10V		PC200-10	VTT220F10	QE1-477
	220 10V		PC250-10	VTT220F10	QV1-115
C42	1000 10V		PC1000-16	VTT1000L10	QV1-179
C47	100 25V		WBR100-25	TT25X100B	QE1-425

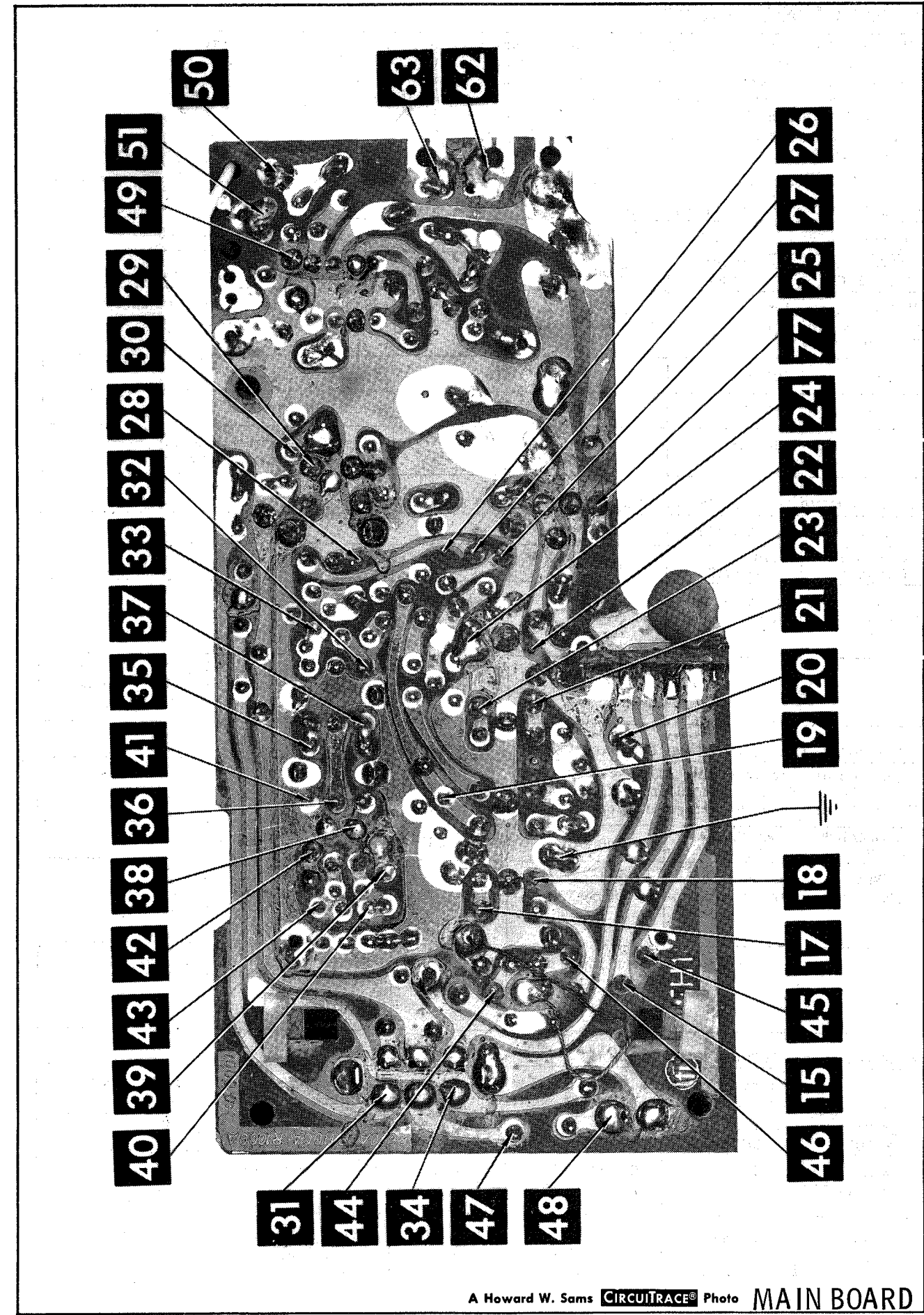
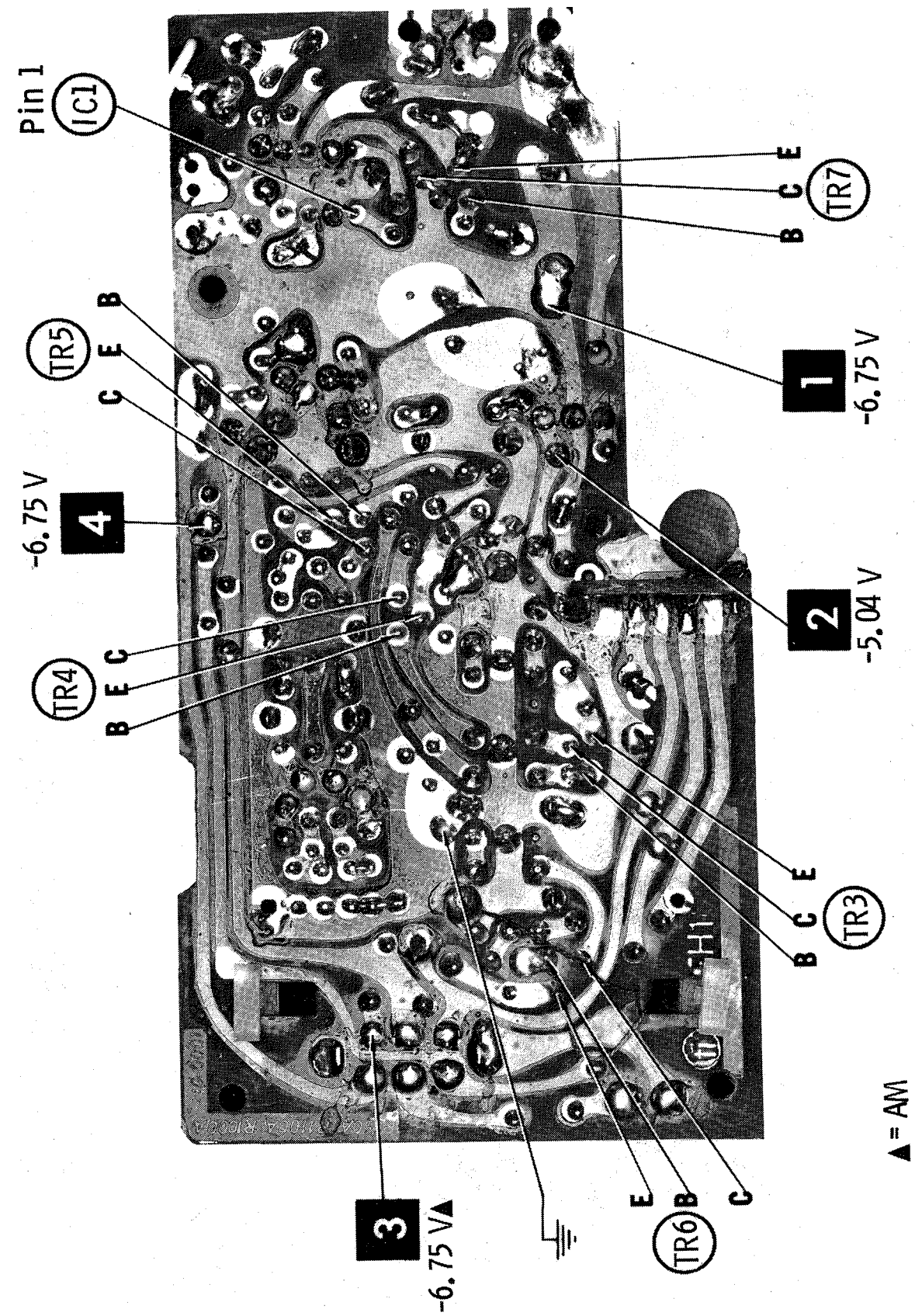
(1) Used in some versions.

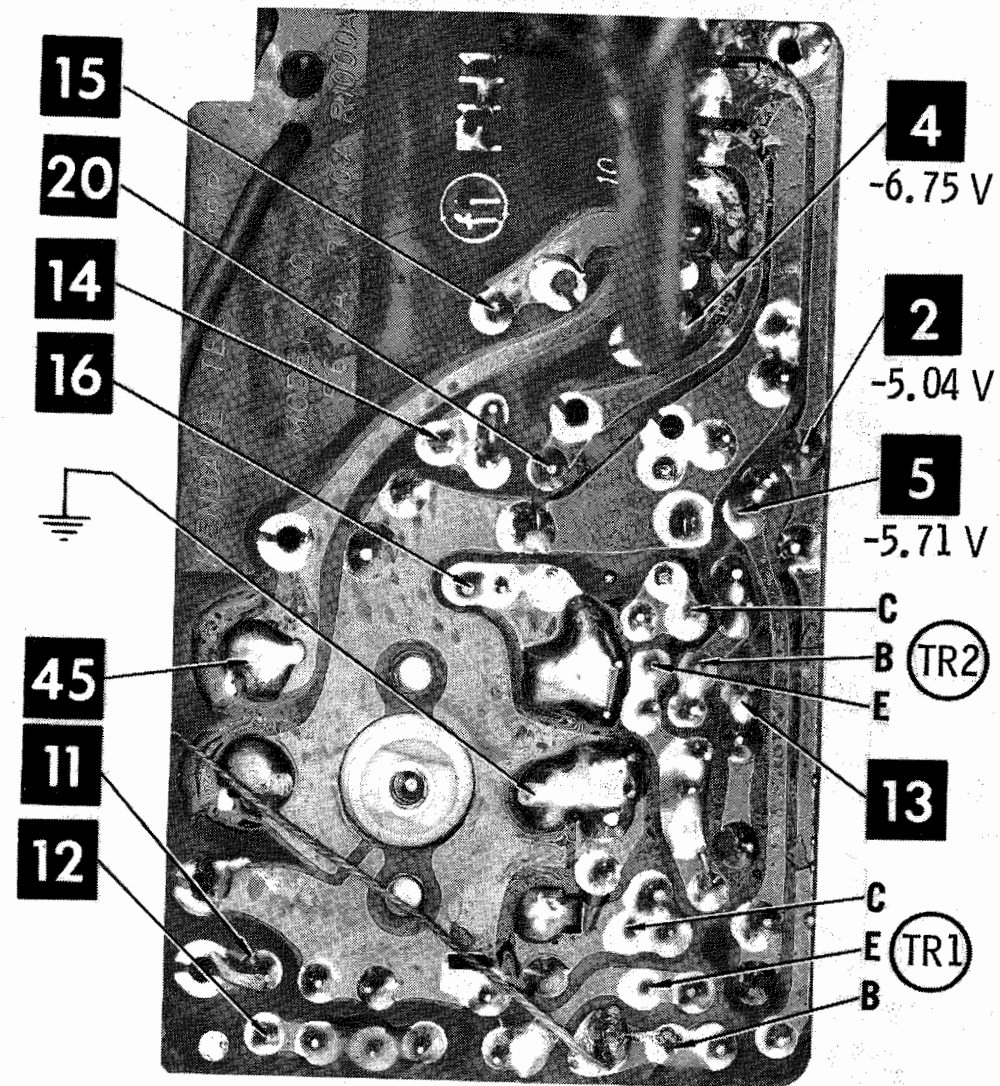
CAPACITORS

ITEM No.	RATING	MFR. PART No.	REPLACEMENT DATA			
			CENTRALAB PART No.	CORNELL-DUBILIER PART No.	MALLORY PART No.	SPRAGUE Q-LINE
C1	22	(1)	DTZ-22	NP022	CN0422	QC2-123
C2	20		DTZ-20	NP020	CN0420	
C3	20		DTZ-20	NP020	CN0420	
C4	.02		DTZ-20	NP020	CN0420	
C5	.005		UK50-223	MGP005	MAG5012	
C6	3		DC-502	NP03P3	TA250	
C7	20		DTZ-3R3	NP03P3	CN0533	
C8	22		DTZ-20	NP020	CN0420	
C9	3		DTZ-22	NP022	CN0422	
	22		DTZ-3R3	NP03P3	CN0533	
C10	20		DTZ-22	NP022	CN0422	
	300		DTZ-20	NP020	CN0420	
C11	500		DD-301	GP300	GP330	
	470		DD-501	GP500	GP350	QC2-97
	.005	(1)	DD-471	GP470	GP347	
C12	20		QC-502	MGP005	TA250	
	22		DTZ-20	NP020	CN0420	
C13	22		DTZ-22	NP022	CN0422	
C14	3		DTZ-3R3	NP03P3	CN0533	
C15	.04		UK50-223		GP140	
C16	.02		UK50-223		MAG5012	
C17	.04				MAG5012	
C18	.0022				GP140	
C19	.02		DD-222		GP222	
C20	.04		UK50-223		MAG5012	
C22	.02		UK50-223		MAG5012	
C23	.02		UK50-223		MAG5012	
C24	.04	(1)	UK50-223		GP140	QC2-123
C25	.02		UK50-223		MAG5012	
C26	.02		UK50-223		MAG5012	
C27	.005		DC-502	MGP005	TA250	
C28	.005		DC-502	MGP005	TA250	
C30	300		DD-301	GP300	GP330	
	500		DD-501	GP500	GP350	

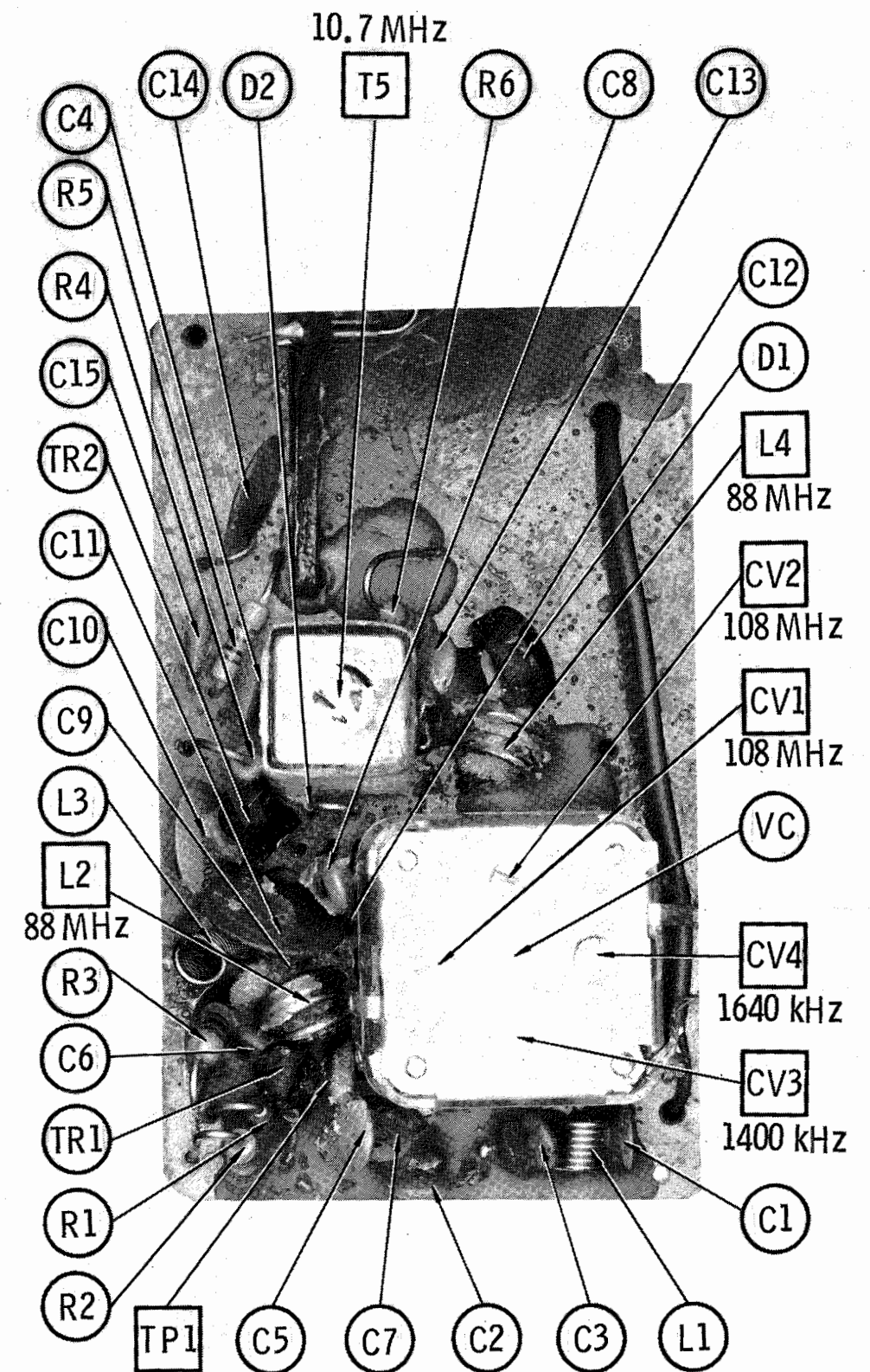


MAIN BOARD



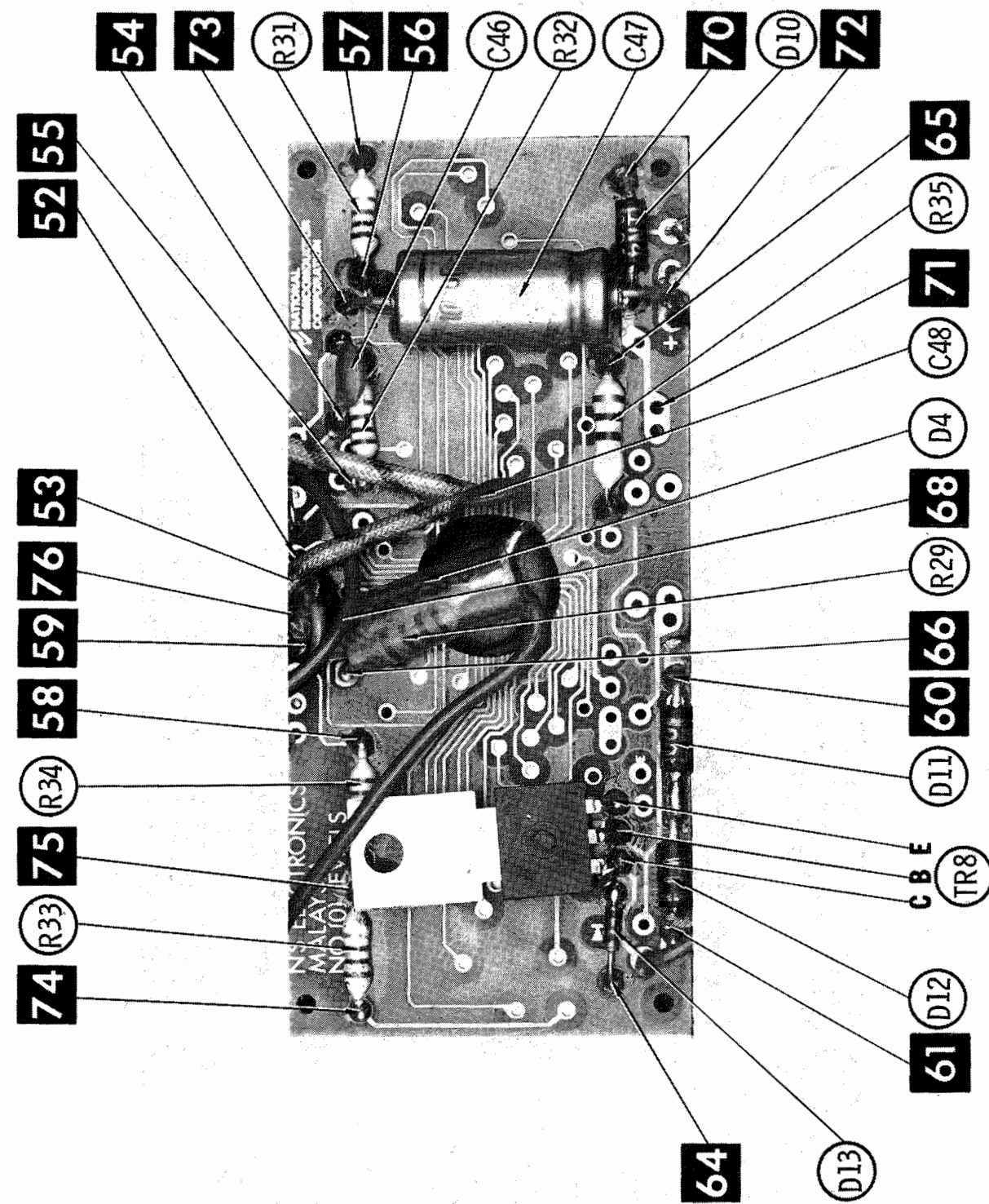


FM RF BOARD A Howard W. Sams CIRCUITRACE® Photo



FM RF BOARD

CLOCK BOARD A Howard W. Sams CIRCUITRACE® Photo



MAIN BOARD

