

WEBCOR MODELS 1058-1,  
1060-1, 1068-1, -1A, 1071-1



MODEL WC1068-1

WEBCOR MODELS 1058-1,  
1060-1, 1068-1, -1A, 1071-1

TRADE NAME	Webcor Models BC1058-1, BC1060-1, BC1068-1, BC1068-1A, BC1071-1, EC1071-1, MC1058-1, MC1060-1, MC1068-1, MC1068-1A, MC1071-1, WC1058-1, WC1060-1, WC1068-1, WC1068-1A, WC1071-1,		
MANUFACTURER	Webcor, Inc., 5610 W. Bloomingdale Ave., Chicago 39, Illinois		
TYPE SET	AC Operated 9 Tube Stereo Phono Amplifier With 4 Speed Automatic Record Changer		
POWER SUPPLY	105 - 120 Volts AC, 60 Cycles	RATING	95 Watts, .86 Amp. @117 Volts AC (Less Motor)

FOR SERVICE INFORMATION ON RECORD CHANGER - SEE WEBCOR 172 - PHOTOFACT SET 447 FOLDER 13 OR RECORD CHANGER MANUAL RC-12

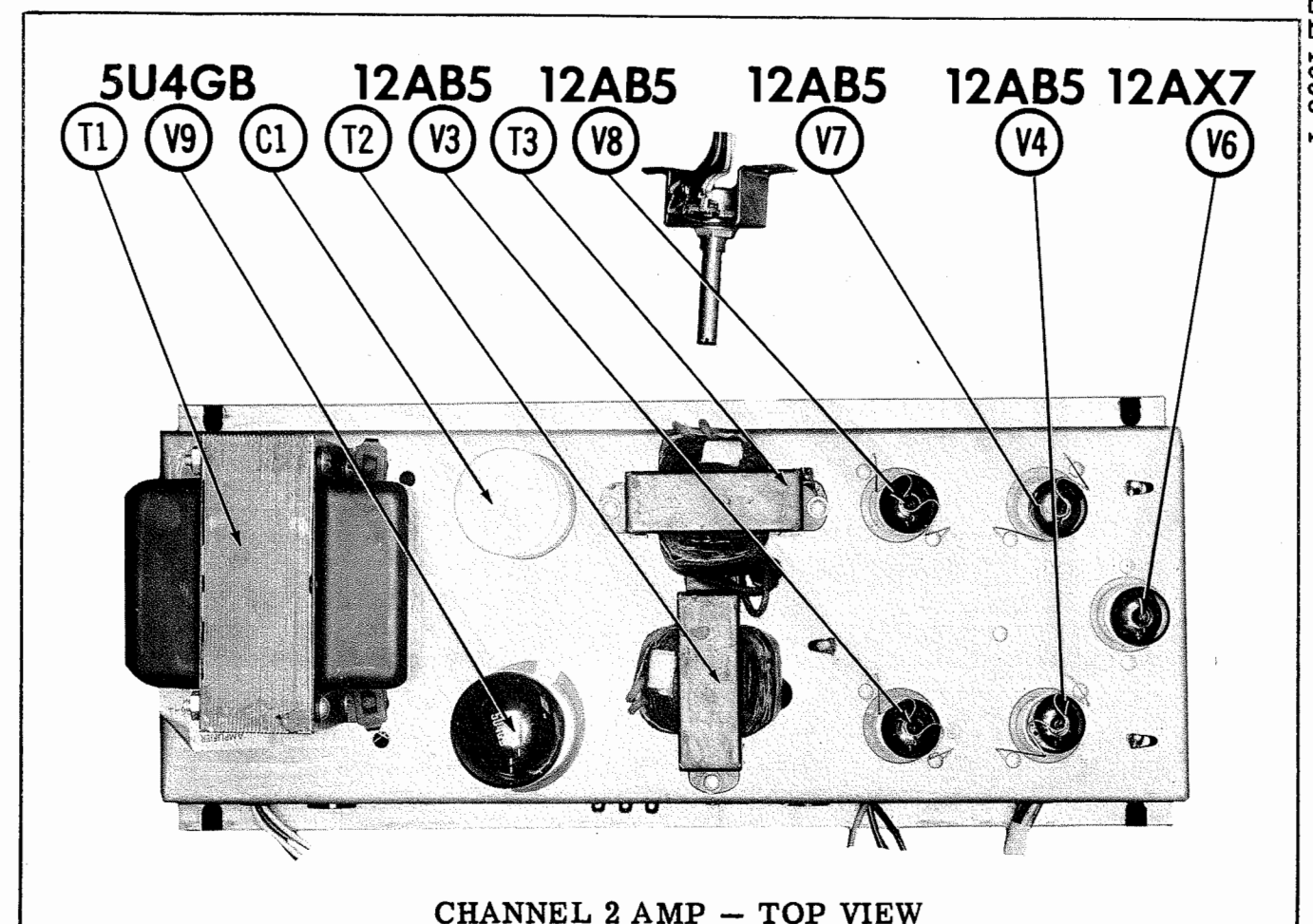
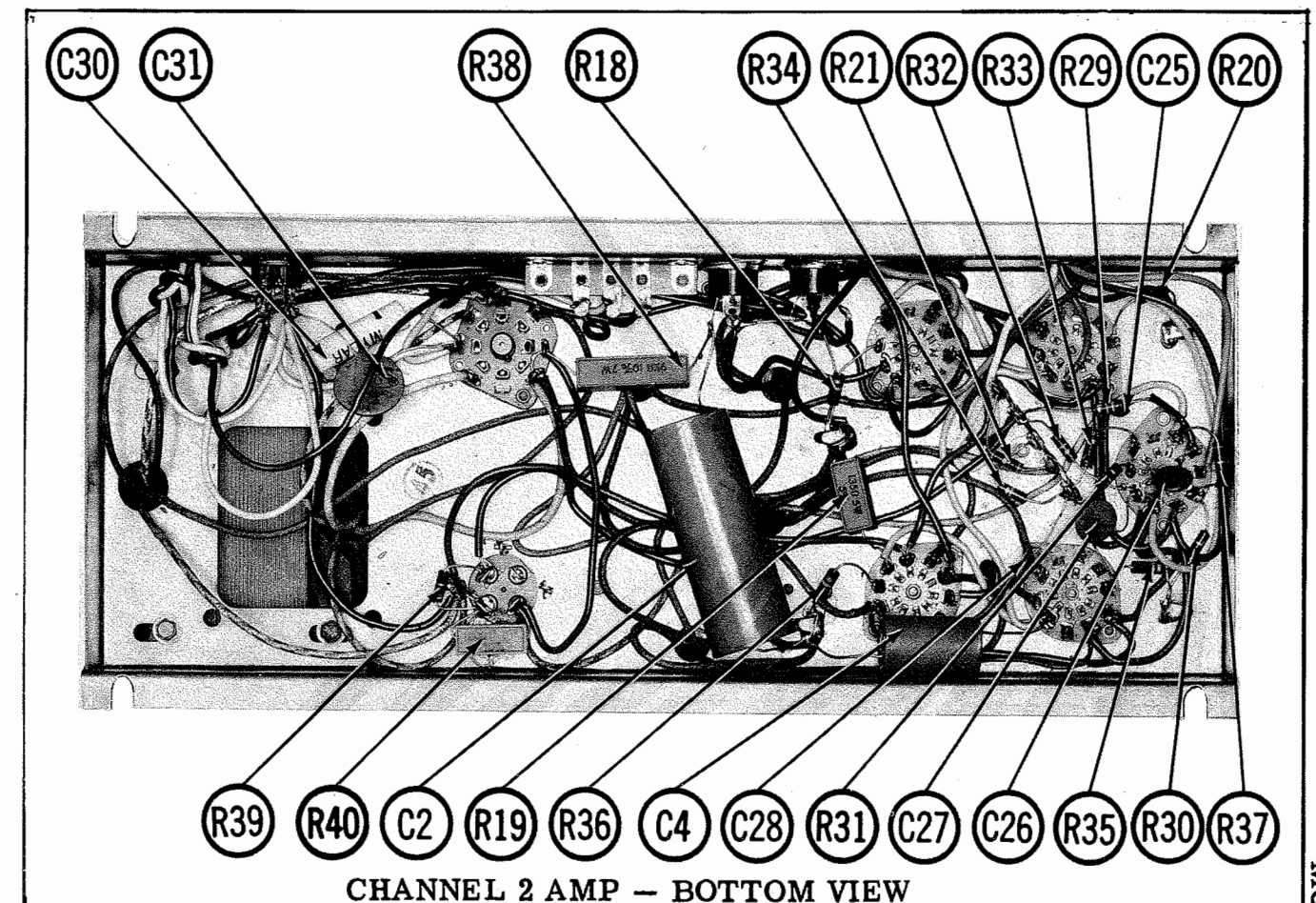
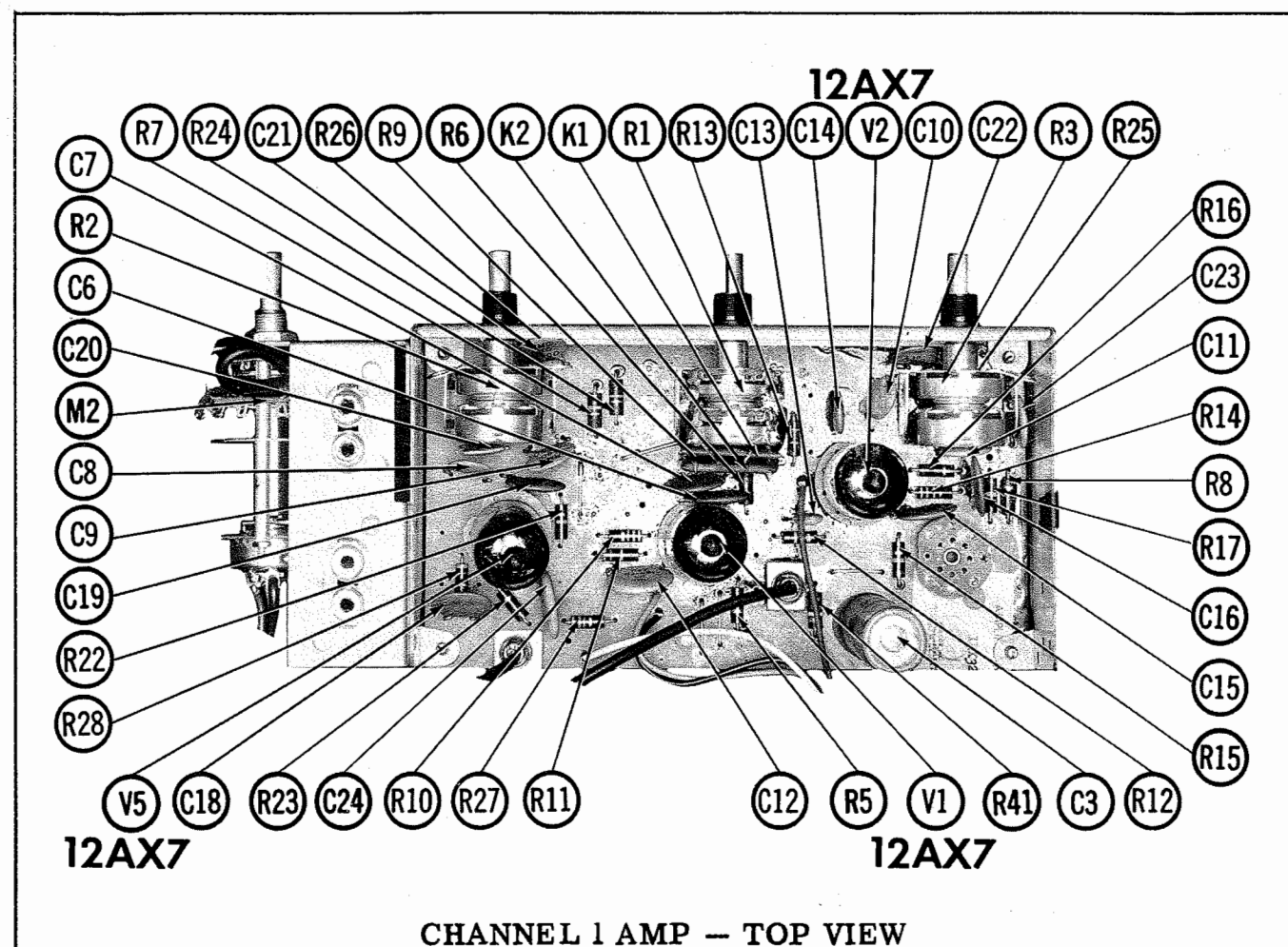
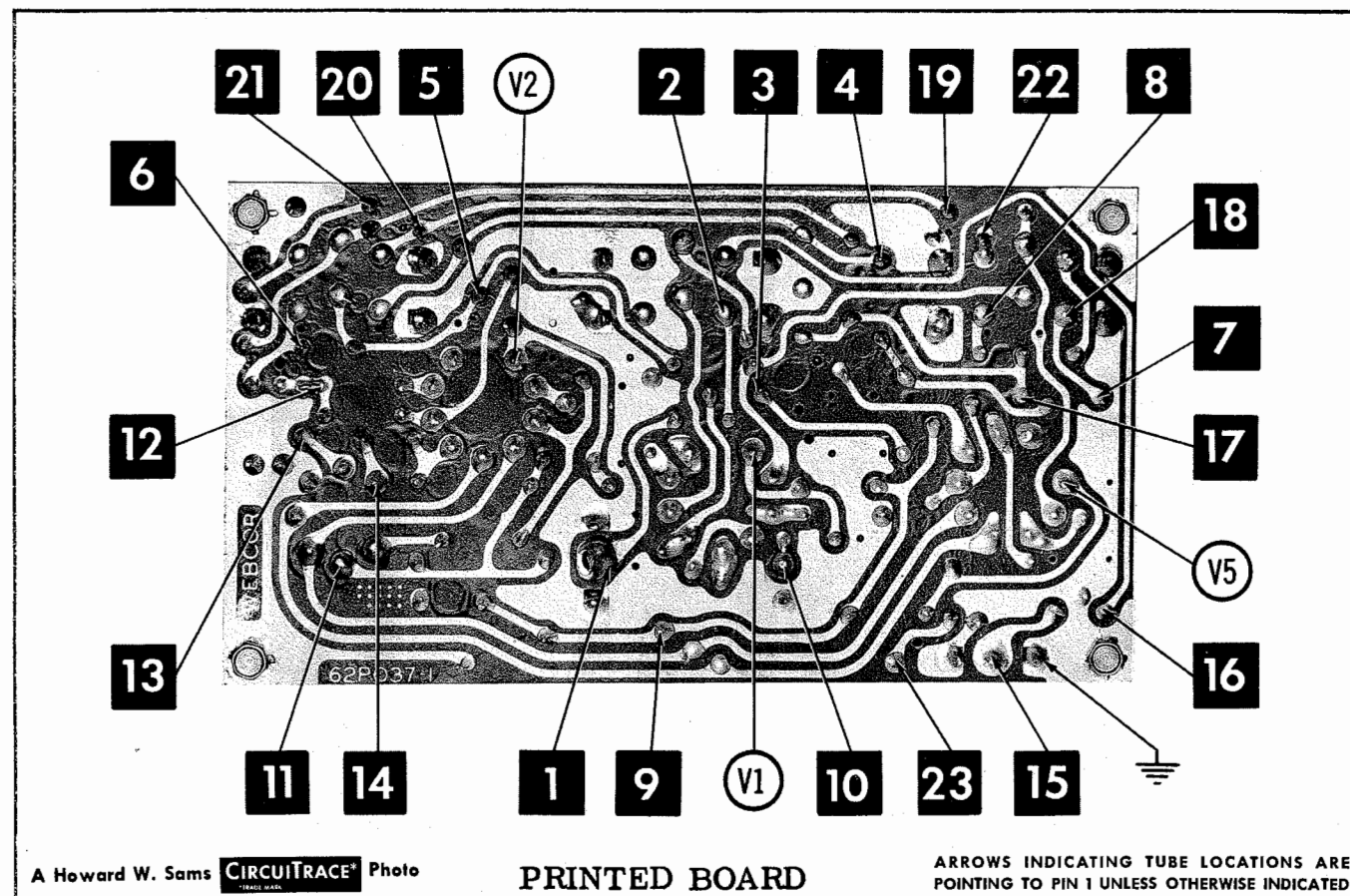
SOME VERSIONS MAY INCLUDE AN FM-AM TUNER - FOR SERVICE INFORMATION REFER TO FOLDER 13 IN THIS SET OF PHOTOFACT FOLDERS

**HOWARD W. SAMS & CO., INC.** Indianapolis 6, Indiana



The listing of any available replacement part herein does not constitute in any case a recommendation, warranty or guaranty by Howard W. Sams & Co., Inc., as to the quality and suitability of such replacement part. The numbers of these parts have been compiled from information furnished to Howard W. Sams & Co., Inc., by the manufacturers of KT189

the particular type of replacement part listed. Reproduction or use, without express permission, of editorial or pictorial content, in any manner, is prohibited. No patent liability is assumed with respect to the use of the information contained herein. © 1961 Howard W. Sams & Co., Inc., Indianapolis 6, Indiana. Printed in U.S. of America



PARTS LIST AND DESCRIPTIONS

TUBES

♦ GENERAL ELECTRIC ♦ RAYTHEON ♦ SYLVANIA ♦			
ITEM No.	USE	ITEM No.	TYPE
V1	Channel 1 AF Amp.	12AX7	12AX7
V2	Channel 1 AF Amp.	12AX7	
V3	Phase Inverter	12AB5 (6BQ5) *	
V4	Channel 1 Output	12AB5 (6BQ5) *	
V5	Channel 2 AF Amp.	12AX7	

\* Used in Models 1060-1, 1071-1.

ELECTROLYTIC CAPACITORS

REPLACEMENT DATA					
ITEM No.	RATING	WEBCOR PART No.	AEROVOX PART No.	CORNELL DUBILER PART No.	SPRAGUE PART No.
C1A	40 450	30P396 ①	AF14-18-40	D0176	FP447.5
C1B	40 450	②	PR81770	BR6045	TC795
C1C	30 450				
C1D	30 450				
C1E	60 400				
C1F	30 300				
C2	15 300	30P281	PR81640	BR635	TC64
C3	15 300	③	PR81260	BR25-25	TC26
C4	25 25		PR87340	BR1015	TCN425
C5A	100 25NP		PR87340	BR1015	TCN425
C5B	100 25NP				

① Some versions may use 35-35-16-25mfd@375-375-25V in this application.  
② C1D is not used in some versions.  
③ C4 is part of C1 in some versions.  
\* Not normally in distributor's stock. Available thru distributor on order to manufacturer.

FIXED CAPACITORS (cont)

REPLACEMENT DATA			
ITEM No.	RATING	REMARKS	SPRAGUE PART No.
C23	10000		B-110
C24	50000		GP150
C25	470		B-347
C26	5000		B-250
C27	10000		B-110
C28	10000		B-110
C29	2.0 25V	#30P317	4TM-S80
C30	.05 400V		20HK-B-S1
C31	10000 1400V		

\* Not normally in distributor's stock. Available thru distributor on order to manufacturer.  
\* Webcor Part Number.

CONTROLS

REPLACEMENT DATA					
ITEM No.	RATING	WEBCOR PART No.	CENTRALAB PART No.	CTS-IRC PART No.	INSTALLATION NOTES
R1A	2meg *	31P159			Volume, Channel 2
R2A	2meg *	31P160			Treble, Channel 1
R3A	1meg	31P160			Treble, Channel 2
R4	75K ↑	31P161			Bass, Channel 1

\* Taps @ 275K & 600K.  
↑ Taps @ 25K & 50K.

RESISTORS

All wattages 1/2 watt, or less, unless otherwise listed.

REPLACEMENT DATA			
ITEM No.	RATING	WEBCOR PART No.	REMARKS
R5	100K		
R6	1500Ω		
R7	20K		
R8	22K		
R9	100K		
R10	400Ω		
R11	6800Ω		
R12	180K		
R13	2700Ω		
R14	470K		
R15	100K		
R16	1000Ω		
R17	100K		
R18	150K		
R19	135Ω 5W	PW5-135Ω 5W-SQ-135	
R20	150K		
R21	82K		
R22	100K		
R23	1500Ω		

\* Alternate Value.

PARTS LIST AND DESCRIPTIONS (Continued)

COMPONENT COMBINATIONS

ITEM No.	USE	WEBCOR PART No.	REPLACEMENT DATA
K1	Tone Compensation	75mmf, 100mmf, 2500mmf, 100mmf, 94K, 240K	Centralab PC-404
K2	Tone Compensation	75mmf, 100mmf, 2500mmf, 100mmf, 94K, 240K	Centralab PC-404

PHONO CARTRIDGE & NEEDLES

\* NEEDLE LISTINGS SHOWN ARE FOR RESPECTIVE REPLACEMENT CARTRIDGES ONLY.

REPLACEMENT DATA					
ITEM No.	WEBCOR PART No.	ASTATIC CARTRIDGE	ELECTRO-VOICE CARTRIDGE	SONOTONE CARTRIDGE	NOTES
M1	21P700-2	21S621-S *	13TB Not Req.	SI-1 * & 8TA4-S	N-8TA-S * or N-8TA-SD *

MISCELLANEOUS

ITEM No.	PART NAME	WEBCOR PART No.	NOTES
M2	Switch	11X2306	Selector (Models 1068-1, 1068-1, -1A, 1060-1, 1071-1)

CABINETS & CABINET PARTS

(When Ordering Cabinets & Cabinet Parts, Specify Model, Chassis & Color)

NAME	PART NO.	DESCRIPTION
Knob	30P297-3	Volume, Bass, Treble, Models 1058 Series, 1068 Series, 1080 Series
Knob	30P297-6	Volume, Bass, Treble, Model 1071 Series
Knob	30P297-5	Balance, Models 1068 Series, 1068 Series, 1071 Series
Knob	30P297-7	Function Selector, Models 1068 Series, 1068 Series, 1060 Series
Knob	11X2300	Balance, Models 1068 Series, 1068 Series, 1060 Series
Cabinet	92X11-1	Blonde, Walnut, Mahogany, Models 1068-1, 1068-1, 1068-1
Cabinet	92X11-2	Model MC1068-1A
Cabinet	92X11-3	Model MC1068-1A
Cabinet	92X11-4	Model MC1068-1A
Cabinet	92X11-5	Model MC1068-1A
Cabinet	92X11-6	Model MC1068-1A
Cabinet	92X11-7	Model MC1068-1A
Cabinet	92X11-8	Model MC1068-1A
Cabinet	92X11-9	Model MC1068-1A
Cabinet	92X120-1	Model MC1068-1A
Cabinet	92X120-2	Model MC1068-1A
Cabinet	92X120-3	Model MC1068-1A
Cabinet	80X251-1	Model MC1068-1A
Cabinet	80X251-2	Model MC1068-1A
Cabinet	110P174-1	Model MC1068-1A
Leg	110P174-2	Model MC1068-1A
Leg	110P174-3	Model MC1068-1A

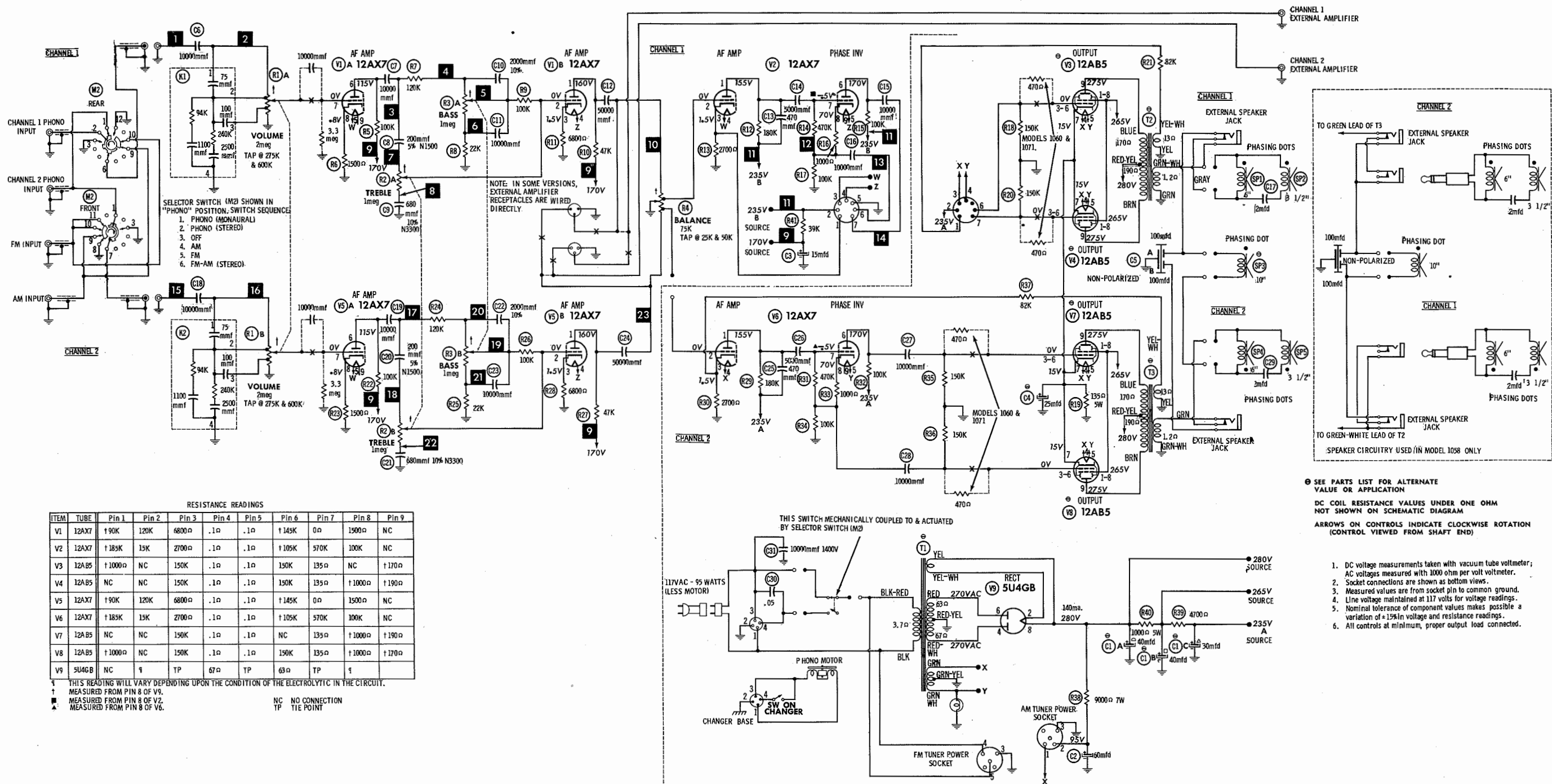
SPEAKER

REPLACEMENT DATA			
ITEM No.	TYPE	WEBCOR PART No.	NOTES
SP1	6" PM	76P100-A	
SP2	3 1/2" PM	76P081-2	
SP3	10" PM	76P099-2 *	* Models 1068-1, 1068-1A
SP4	6" PM	76P100-A	
SP5	3 1/2" PM	76P081-2	
	12" PM	76P014 ↑	↑ Replaces SP3 in Model 1068
	15" PM	76P014 *	* Replaces SP3 in Model 1060-1
		76P085 †	† Replaces SP3 in Models 1071-1A, 1071-1

WIRING DATA

General-use Unshielded Hook-up Wire ..... Use BELDEN No. 9550 (Solid) Available in Ten Colors  
Power Cord ..... Use BELDEN No. 9524 (Stranded) Available in Ten Colors  
Low-Loss Shielded Lead (Interconnecting) ..... Use BELDEN No. 1725-K (7 1/2 Ft. Length)  
Phono Pick-up Arm Cable ..... Use BELDEN No. 8401  
Phono Pick-up Arm Cable ..... Use BELDEN No. 8430 (Two Conductor - Twisted)





A PHOTOFAC STANDARD NOTATION SCHEMATIC  
 with **CircuitTrace**  
 © Howard W. Sams & Co., Inc. 1961

SEE PARTS LIST FOR ALTERNATE  
 VALUE OR APPLICATION  
 DC COIL RESISTANCE VALUES UNDER ONE OHM  
 NOT SHOWN ON SCHEMATIC DIAGRAM  
 ARROWS ON CONTROLS INDICATE CLOCKWISE ROTATION  
 (CONTROL VIEWED FROM SHAFT END)

1. DC voltage measurements taken with vacuum tube voltmeter; AC voltages measured with 1000 ohm per volt voltmeter.
2. Socket connections are shown as bottom views.
3. Measured values are from socket pin to common ground.
4. Line voltage maintained at 117 volts for voltage readings.
5. Nominal tolerance of component values makes possible a variation of ±15% in voltage and resistance readings.
6. All controls at minimum, proper output load connected.

WEBCOR MODELS 1058-1,  
 1060-1, 1068-1, -1A, 1071-1