

ADMIRAL CHASSIS
5K5, 5K5A



ADMIRAL CHASSIS
5K5, 5K5A

TRADE NAME	Admiral Models Y979 (Ch. 5K5A), Y1002, Y1009, Y1021, Y1022, Y1023, Y1041, Y1042, Y1043, Y1069 (Ch. 5K5); SS979, SS1041, SS1042, SS1043, SS1069 (External Speaker Unit)		
MANUFACTURER	Admiral Sales Corp., Service Div., 903 Morrissey Drive, P. O. Box 845, Bloomington, Illinois		
TYPE SET	AC Operated 5 Tube Stereo Amplifier With 4 Speed Automatic Record Changer		
POWER SUPPLY	110 - 120 Volts AC, 60 Cycles	RATING	72 Watts, .68 Amp. @117 Volts AC (Less Motor)

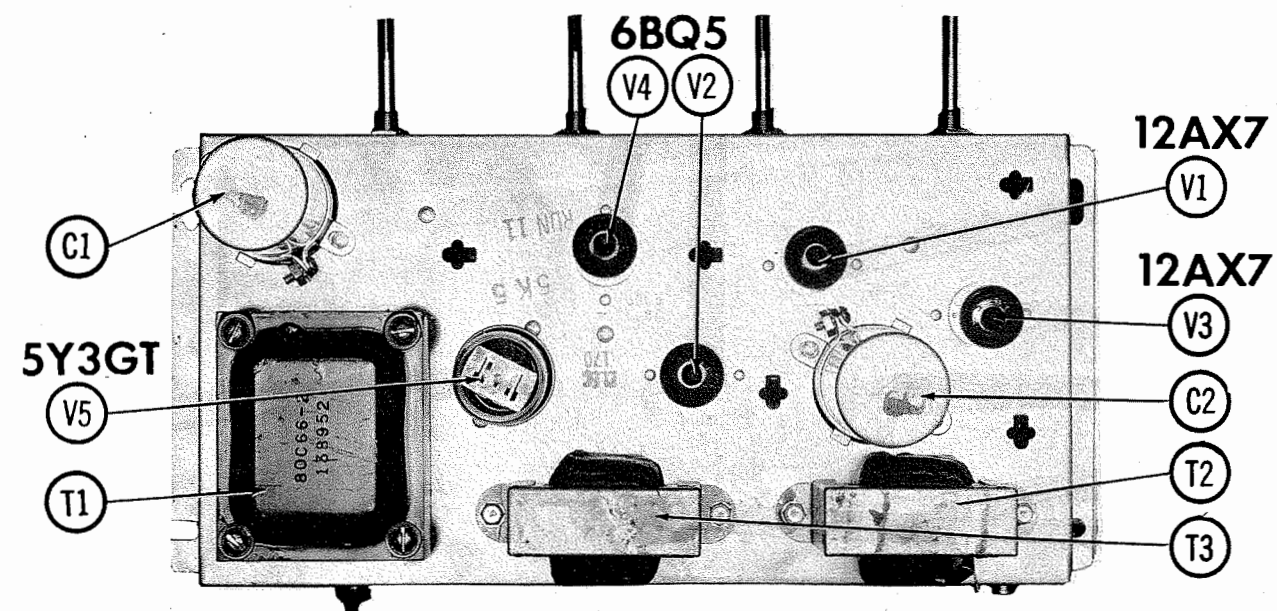
MODEL Y979 MAY USE RECORD CHANGER RC6E9J-18P, RC6E9K-18P OR RC6E9M-18P.
MODELS Y1002, Y1009, Y1021, Y1022 AND Y1023 MAY USE RECORD CHANGER RC6E9J-16Y, RC6E9K-16Y OR RC6E9M-16Y. MODELS Y1041, Y1042, Y1043 AND Y1069 MAY USE RECORD CHANGER RC6E9J-18Q, RC6E9K-18Q OR RC6E9M-18Q.
FOR SERVICE INFORMATION ON RECORD CHANGER — SEE SIMILAR ADMIRAL RC607 SERIES — PHOTOFACT SET 398 FOLDER 7 OR RECORD CHANGER MANUAL RC-11

HOWARD W. SAMS & CO., INC. Indianapolis 6, Indiana

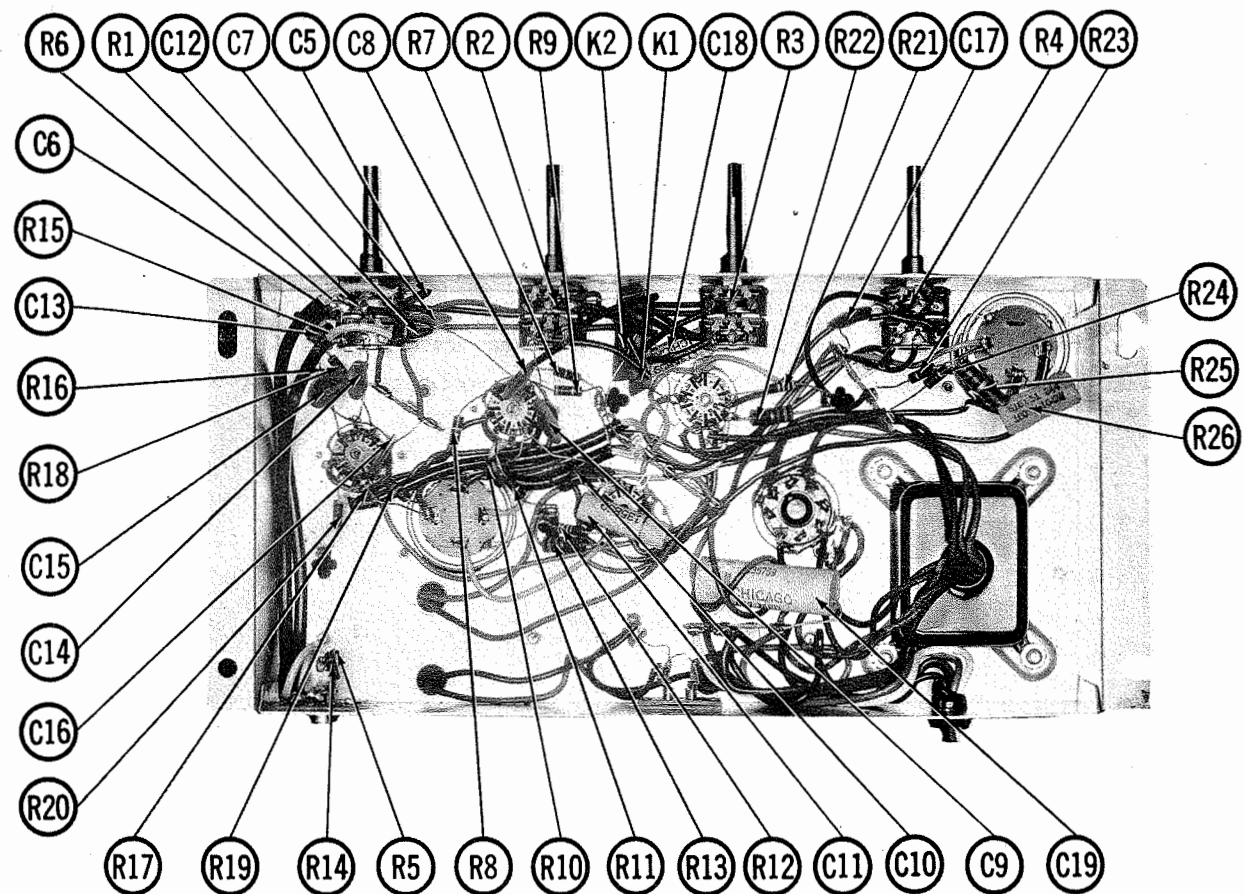
The listing of any available replacement part herein does not constitute in any case a recommendation, warranty or guaranty by Howard W. Sams & Co., Inc., as to the quality and suitability of such replacement part. The numbers of these parts have been compiled from information furnished to Howard W. Sams & Co., Inc., by the manufacturers of KT171

the particular type of replacement part listed. Reproduction or use, without express permission, of editorial or pictorial content, in any manner, is prohibited. No patent liability is assumed with respect to the use of the information contained herein. © 1961 Howard W. Sams & Co., Inc., Indianapolis 6, Indiana. Printed in U.S. of America





CHASSIS-TOP VIEW



CHASSIS-BOTTOM VIEW

PARTS LIST AND DESCRIPTIONS

TUBES

• GENERAL ELECTRIC • RAYTHEON • SYLVANIA •								
ITEM No.	USE	TYPE	ITEM No.	USE	TYPE			
	TYPE							
V1	Left Channel AF Amp.	12AX7	W4 W5	Right Channel Output Rectifier	6BQ5 (EL84/ 6BQ5) * 5Y3GT			
V2	Left Channel Output	6BQ5 (EL84/ 6BQ5) *						
V3	Right Channel AF Amp.	12AX7						
* Alternate								
ELECTROLYTIC CAPACITORS								
RATING			REPLACEMENT DATA					
ITEM No.	CAP.	VOLT.	ADMIRAL PART No.	AEROVOX PART No.	CONRAD-DUMMER PART No.	MALLORY PART No.	PYRAMID PART No.	NOTES
C1A	40	350	67D7-37	AFH3-154-30	C0236	FF375.5	TMT-3441	TVL-3642
C1B	80	350						
C1C	40	350						
C2A	40	350	67D7-39	AFH4-53	D0034	FP420.38	TMQ-4652	TVL-2764 TVA-2453
C2B	80	350						
C2C	40	25						
C3	4	10NFP	64B13-5	PB87405	BBR4-150	TCN504		TVANS-1150*
C3 C4	4	10NFP	64B13-5	PB87405	BBR4-150	TCN504		TVANS-1150*

* Not normally in distributor's stock. Available thru distributor on order to manufacturer.

FIXED CAPACITORS

Capacity values given in the rating column are in mfd. for Paper Capacitors, and in mmfd. for Mica and Ceramic Capacitors.

REPLACEMENT DATA				
ITEM No.	RATING	REMARKS	AEROVOX PART No.	NOTES
C5	100 N1500	Note 1	DI-1000	
C6	1000	Note 2	BFD-01	
C7	10000		BFD-02	
C8	20000		BFD-02	
C9	20000	Note 3	BFD-02	
C10	20000		P1088N-0022	
C11	.0022 1000V		DD-222	
C12	100 N1500	Note 1	DI-1000	
C13	1000	Note 2	BFD-01	
C14	10000		BFD-02	
C15	20000		BFD-02	
C16	20000		BFD-02	
C17	20000	Note 3	P1088N-0022	
C18	.0022 1000V		DD-222	
C19	.047 600V		P688N-047	

Note 1. Run 10 uses 30mmf in this application (Part #65D6-154).
Note 2. Run 10 uses 20000mmf in this application (Part #65D10-137).
Note 3. Run 10 uses 5000mmf in this application (Part #65D10-152).

CONTROLS

REPLACEMENT DATA				
ITEM No.	RATING	ADMIRAL PART No.	CENTRALAB PART No.	INSTALLATION NOTES
R1A	3meg	75D46-11 ①		Loudness, Left Channel
B	1.5meg Tap			Loudness, Right Channel
C	1.5meg Tap			Treble, Right Channel
R2A	500K	75D46-14 ②	ABT-65	Treble, Left Channel
B	200K Tap		STR-65	
C	500K		AK-8	Bass, Right Channel
R3A	1meg	75D46-13 ③	AB-69	Bass, Left Channel
B	500K		SR-69	Balance, Right Channel
R4A	2meg	75D46-12 ④	AK-8	Balance, Left Channel
C	1.5meg Tap			

① Chassis 5K5A uses 3meg dual loudness (Part #75D46-16).
② Chassis 5K5A uses 500K dual treble (Part #75D46-19).
③ Chassis 5K5A uses 1meg dual bass (Part #75D46-18).
④ Chassis 5K5A uses 2meg dual balance (Part #75D46-17).
Some versions may use Part #75D46-16.
* Use 1.5meg tap.

RESISTORS (IRC or EQUIVALENT)

All wattages 1/2 watt, or less, unless otherwise listed.

ITEM No.	RATING	REMARKS	ITEM No.	RATING	REMARKS	ITEM No.	RATING	REMARKS
R5	3.3meg	Note 1	R13	1300 1W		R21	470K	
R6	120K		R14	3.3meg	Note 1	R22	1300 1W	
R7	3.3meg		R15	120K		R23	10000	
R8	100K		R16	3.3meg		R24	10000	
R9	8200		R17	100K		R25	1500 1W	
R10	270K		R18	8200		R26	1000 5W	
R11	22000		R19	270K				
R12	470K		R20	22000				

Note 1. Used in Run 10 of Chassis 5K5 only.

COMPONENT COMBINATIONS

ITEM No.	USE	DESCRIPTION	ADMIRAL PART No.	REPLACEMENT DATA
K1	Tone Compensation	100mmf, 4700mmf, 4700mmf, 100000, 100K, 470K	69B14-1	Centralab Sprague
K2	Tone Compensation	100mmf, 4700mmf, 4700mmf, 100000, 100K, 100K, 470K	69B14-1	Centralab Sprague

PARTS LIST AND DESCRIPTIONS (Continued)

TRANSFORMER (POWER)

REPLACEMENT DATA				
ITEM No.	RATING	ADMIRAL PART No.	Merit Part No.	NOTES
T1	117V @ 50VCT .68A	80C66-2	PC-8405 ①	Drill New Mounting Hole.
	SEC. 3 6.3VCT @2.1A			

TRANSFORMER (AUDIO OUTPUT)

REPLACEMENT DATA				
ITEM No.	IMPEDANCE	ADMIRAL PART No.	Merit Part No.	NOTES
T2	3-40	79D33-27	A-2935	
T3	3-40	79D33-27	A-2935	

SPEAKER

REPLACEMENT DATA				
ITEM No.	TYPE	ADMIRAL PART No.	Merit Part No.	NOTES
SP1	8" PM	78C151-3	8A31	
SP2	3 1/2" PM	78C149-1	8A31	
SP3	3 1/2" PM	78C151-3	8A31	
SP4	3 1/2" PM	78C149-1	8A31	

PHONO CARTRIDGE & NEEDLES

*NEEDLE LISTINGS SHOWN ARE FOR RESPECTIVE REPLACEMENT CARTRIDGES ONLY.

REPLACEMENT DATA				
ITEM No.	ADMIRAL PART No.	ASTATIC CARTRIDGE	ELECTRO-VOICE PART No.	NOTES
M1	409B33-1-1	98C15-101* (78RPM) and 98C15-100* (78RPM) or 98C15-102*	Not Req. 26S	Note 1. For Changer Model Numbers Ending With - 18Y. Note 2. For Changer Model Numbers Ending With - 18P or - 18Q.
	409C34-1-1	137TB	Not Req. 26S	
	(Note 2)	98C95-9*	137TB	

MISCELLANEOUS

ITEM No.	PART NAME	ADMIRAL PART No.	NOTES
M2	Switch	408A-1	Off-On-Reject (Part of Changer)
M3	Motor	407C-28	Phono Drive (Part of Changer)

CABINETS & CABINET PARTS

(When Ordering Cabinets & Cabinet Parts, Specify Model, Chassis & Color)

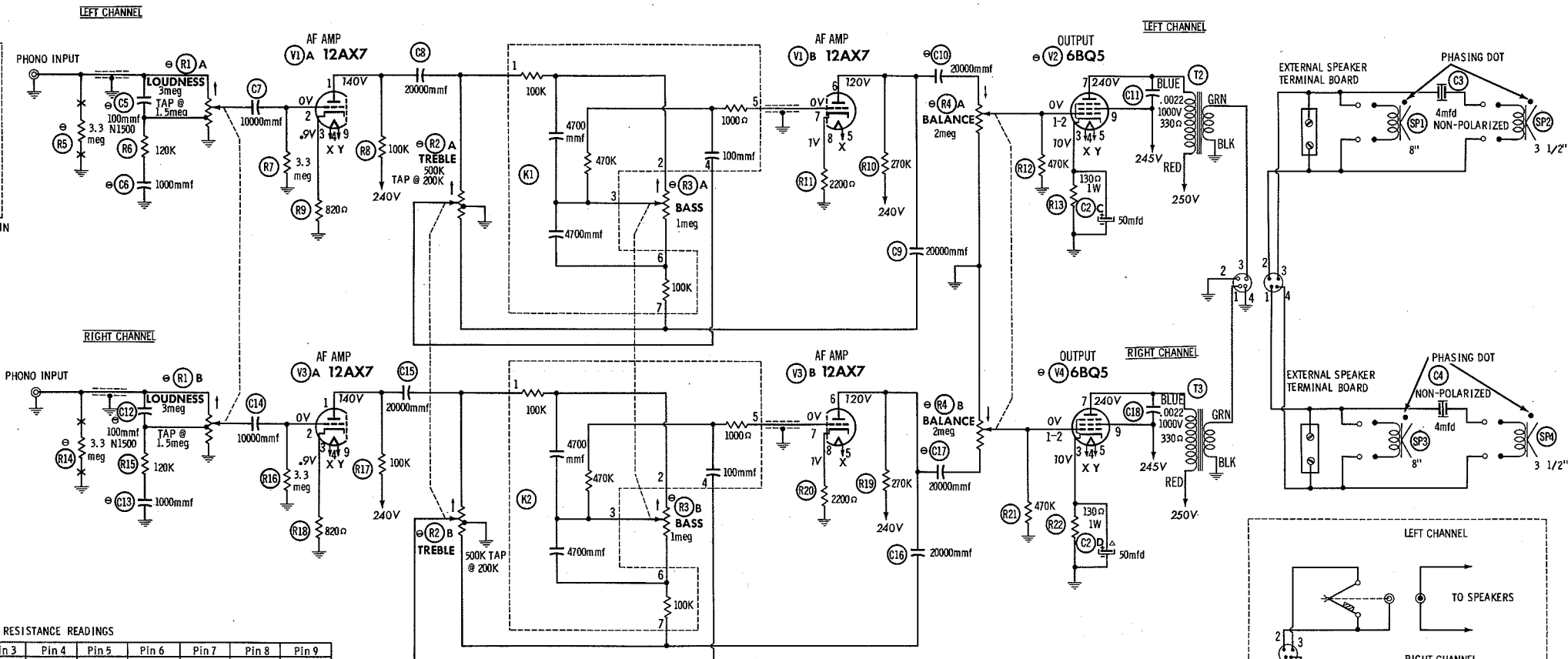
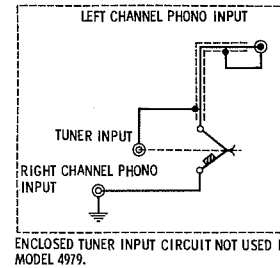
NAME	PART NO.	DESCRIPTION
Knob	700A208-1	Models Y979, Y1002, Y1009, Y1021, Y1022, Y1023
Knob	700A208-3	Models Y1041, Y1042, Y1043, Y1043, Y1069
Cabinet	35E568-1	Gray And Charcoal, Model Y979
Cabinet	35E569-1	Gray And Charcoal, Model SS979
Cabinet	35E547-1	Walnut, Model Y1041
Cabinet	35E547-2	Mahogany, Model Y1042
Cabinet	35E547-3	Blond, Model Y1043

CABINETS & CABINET PARTS (cont)

NAME	PART NO.	DESCRIPTION
Cabinet	35E558-9	Fruitwood, Model Y1069
Cabinet	35E548-1	Walnut, Model SSI041
Cabinet	35E548-2	Mahogany, Model SSI042
Cabinet	35E548-3	Blond, Model SSI043
Cabinet	35E576-9	Fruitwood, Model SSI069
Cabinet	35E539-2	Mahogany, Model Y1002
Cabinet	35E539-9	Fruitwood, Model Y1009
Cabinet	35E546-1	Walnut, Model Y1021
Cabinet	35E546-2	Mahogany, Model Y1022
Cabinet	35E546-3	Blond, Model Y1023
Leg	37D168-79	Walnut, Models Y1041, SSI041
Leg	37D168-52	Mahogany, Models Y1042, SSI042
Leg	37D168-53	Blond, Models Y1043, SSI043

WIRING DATA

General-use Unshielded Hook-up Wire Use BELDEN No. 8530 (Solid) Available in Ten Colors
Power Cord Use BELDEN No. 8524 (Stranded) Available in Ten Colors
Low-Loss Shielded Lead (Interconnecting) Use BELDEN No. 1785-B (6 Ft. Length)
Photo Pick-up Arm Cable Use BELDEN No. 8401
..... Use BELDEN No. 1785-K (7 1/2 Ft. Length)
..... Use BELDEN No. 8430 (Two Conductor - Twisted)

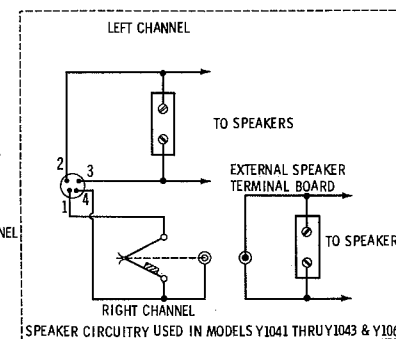
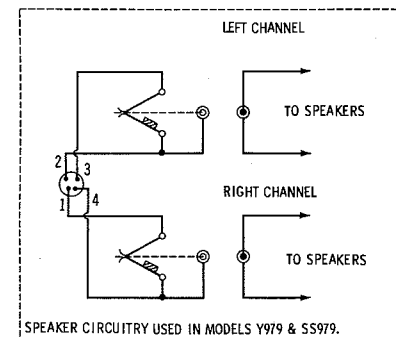
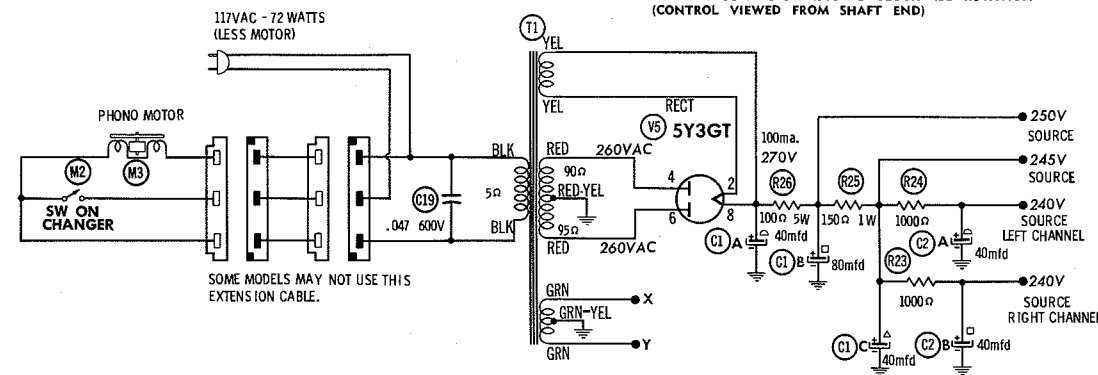


RESISTANCE READINGS

ITEM	TUBE	Pin 1	Pin 2	Pin 3	Pin 4	Pin 5	Pin 6	Pin 7	Pin 8	Pin 9
V1	12AX7	†100K	3.3meg	820Ω	.1Ω	.1Ω	†270K	700K	2200Ω	.1Ω
V2	6BQ5	NC	0Ω	130Ω	.1Ω	.1Ω	NC	†430Ω	NC	250Ω
V3	12AX7	†100K	3.3meg	820Ω	.1Ω	.1Ω	†270K	700K	2200Ω	.1Ω
V4	6BQ5	NC	0Ω	130Ω	.1Ω	.1Ω	NC	†430Ω	NC	†250Ω
V5	5Y3GT	NC	†	NC	90Ω	NC	95Ω	NC	†	†

† THIS READING WILL VARY DEPENDING UPON THE CONDITION OF THE ELECTROLYTIC IN THE CIRCUIT.
 † MEASURED FROM PIN 8 OF V5. NC NO CONNECTION

SEE PARTS LIST FOR ALTERNATE VALUE OR APPLICATION
 DC COIL RESISTANCE VALUES UNDER ONE OHM NOT SHOWN ON SCHEMATIC DIAGRAM
 ARROWS ON CONTROLS INDICATE CLOCKWISE ROTATION (CONTROL VIEWED FROM SHAFT END)



1. DC voltage measurements taken with vacuum tube voltmeter; AC voltages measured with 1000 ohm per volt voltmeter.
2. Socket connections are shown as bottom views.
3. Measured values are from socket pin to common ground.
4. Line voltage maintained at 117 volts for voltage readings.
5. Nominal tolerance of component values makes possible a variation of ±15% in voltage and resistance readings.
6. All controls at minimum, proper output load connected.