

AC FUSIBLE RESISTOR HEIGHT VERT LIN VERT HOLD HORIZ OSC (HOLD) CENTERING

CABINET-REAR VIEW

DISASSEMBLY INSTRUCTIONS

CHASSIS REMOVAL

Remove 5 screws holding cabinet back and remove connector to VHF antenna. Remove cabinet back.

Remove all knobs from front of cabinet. Remove picture-tube socket, high-voltage anode lead, disconnect speaker leads and deflection yoke.

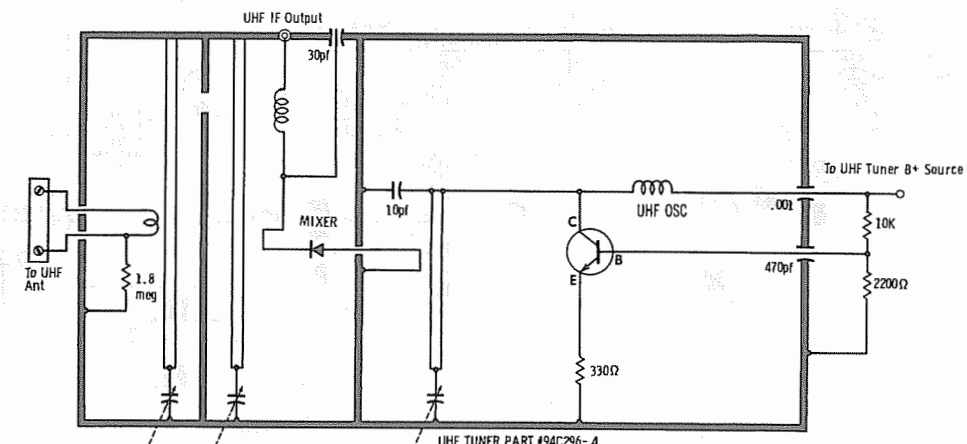
Remove 5 screws securing tuner assembly and

chassis. Slide chassis rearward and out of cabinet.

PICTURE TUBE REMOVAL

Follow "Chassis Removal" procedure and lay set facedown on a soft, protective surface.

Loosen picture-tube retainer nut and screw and remove 4 screws securing picture-tube mounting brackets. Lift picture tube out of cabinet. Do not lift picture tube by the neck.



A PHOTOFACT STANDARD NOTATION SCHEMATIC © Howard W. Sams & Co., Inc. 1972

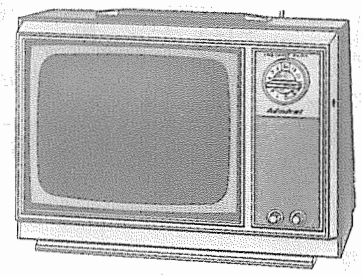
UHF TUNER 94C296-4

PHOTOFACT® Folder

with CIRCUITRACE

For Supplier Address See PHOTOFACT Index

MODELS	CHASSIS
9P239	TR2-1A
9P245	TR2-1A
9P250	TR2-1A
9P257	TR2-1A
12P261	TR3-1A
12P275	TR3-1A
12P280	TR3-1A
12P287	TR3-1A
SK9P248	TR2-1A
SK9P290	TR2-1A
SK9P248M	TR2-2A
SK9P290M	TR2-2A



MODEL 9P245

SAFETY PRECAUTIONS

Make sure line voltage does not exceed rating of set. Check high-voltage regulation and adjust to correct value. Be sure shields and rear cover are in place and secure.

Beware of shock from high voltage or AC line. Discharge high voltage to HV cage only.

Use extreme care when handling picture tube. Do not bump, scratch, or exert undue strain.

CAUTION: One side of AC line connected to chassis. Use isolation transformer for servicing. Make certain isolation networks are in place and exposed metal is safe to touch before returning set to customer.

SERVICING IN THE FIELD

CRT IMPLOSION PROTECTION AND CLEANING

Implosion protection is an integral part of the picture tube, cleaning accomplished without CRT removal.

FUSE DEVICES

A 5.5-ohm fusible resistor is used for AC line protection. (See "Cabinet--Rear View" photo.)

VHF TUNER

The fine tuning mechanically engages oscillator slug for adjustment (one slug for each channel).

HORIZONTAL OSCILLATOR

Adjustment of the horizontal hold is accomplished by the proper setting of the horizontal oscillator (hold) coil. (See "Cabinet--Rear View" photo.)

WIDTH

No provision is made to vary the width on this receiver.

FOCUS

No provision is made to vary the focus on this receiver.

INDEX

	Page		Page
Alignment		Photos (Continued)	
Tuners	13	UHF Tuner	17
TV	4	VHF Tuner	8,13
Disassembly Instructions	20	Resistance Measurement	18
Parts List		Schematics	
Tuners	16	TV	2
TV	9 thru 12	UHF Tuner	17,20
Photos		VHF Tuner	8,18
Cabinet--Rear View	20	Servicing in the Field	1
Printed Board--Top View	5,7,14	Troubleshooting Check Chart	3
Printed Board--Bottom View	6,15	Tube Placement Chart	3
Tuner Assembly	12		

REMEMBER TO ASK— "What else needs fixing?"

HOWARD W. SAMS & CO., INC. Indianapolis, Indiana 46206

The listing of any available replacement part herein does not constitute in any case a recommendation, warranty or guaranty by Howard W. Sams & Co., Inc., as to the quality and suitability of such replacement part. The numbers of these parts have been compiled from information furnished to Howard W. Sams & Co., Inc., by the manufacturers of the particular type of replacement part listed. 2PA355R 10 9 8 7 6 5 4 3 2 1 0

Reproduction or use, without express permission, of editorial or pictorial content, in any manner, is prohibited. No patent liability is assumed with respect to the use of the information contained herein. © 1972 Howard W. Sams & Co., Inc., Indianapolis, Indiana 46206. Printed in U. S. of America

DATE 5-72 SET 1245 FOLDER 1

SET 1245 FOLDER 1  
ADMIRAL CHASSIS  
TR2-1A, TR2-2A, TR3-1A

ADMIRAL CHASSIS  
TR2-1A, TR2-2A, TR3-1A

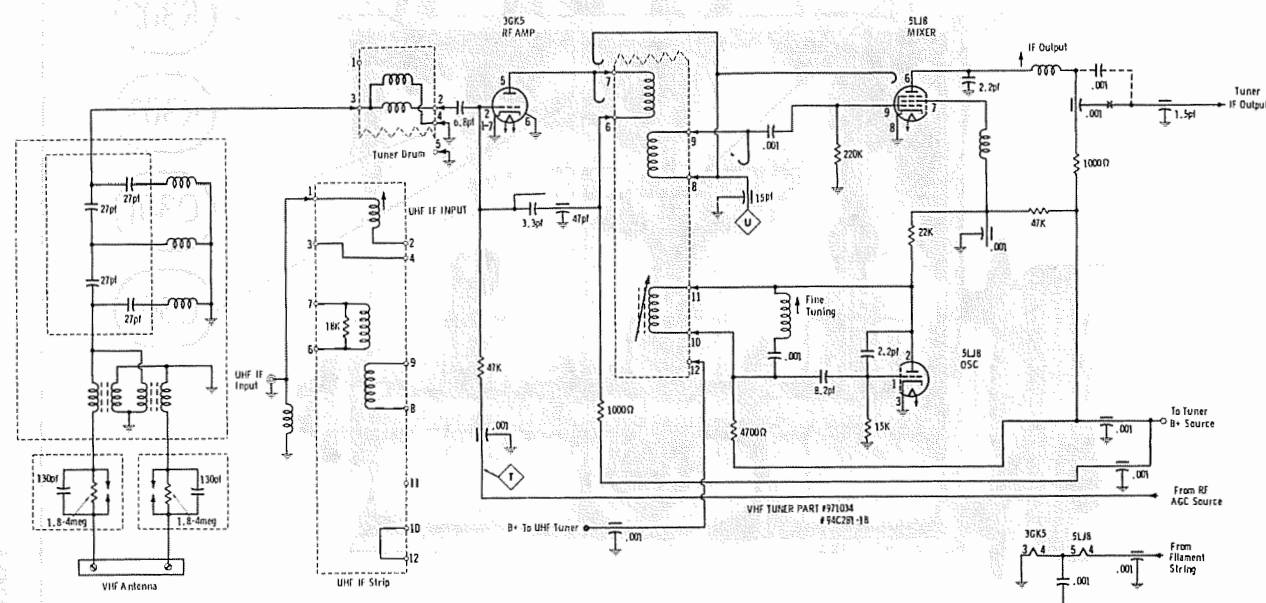
SET 1245 FOLDER 1



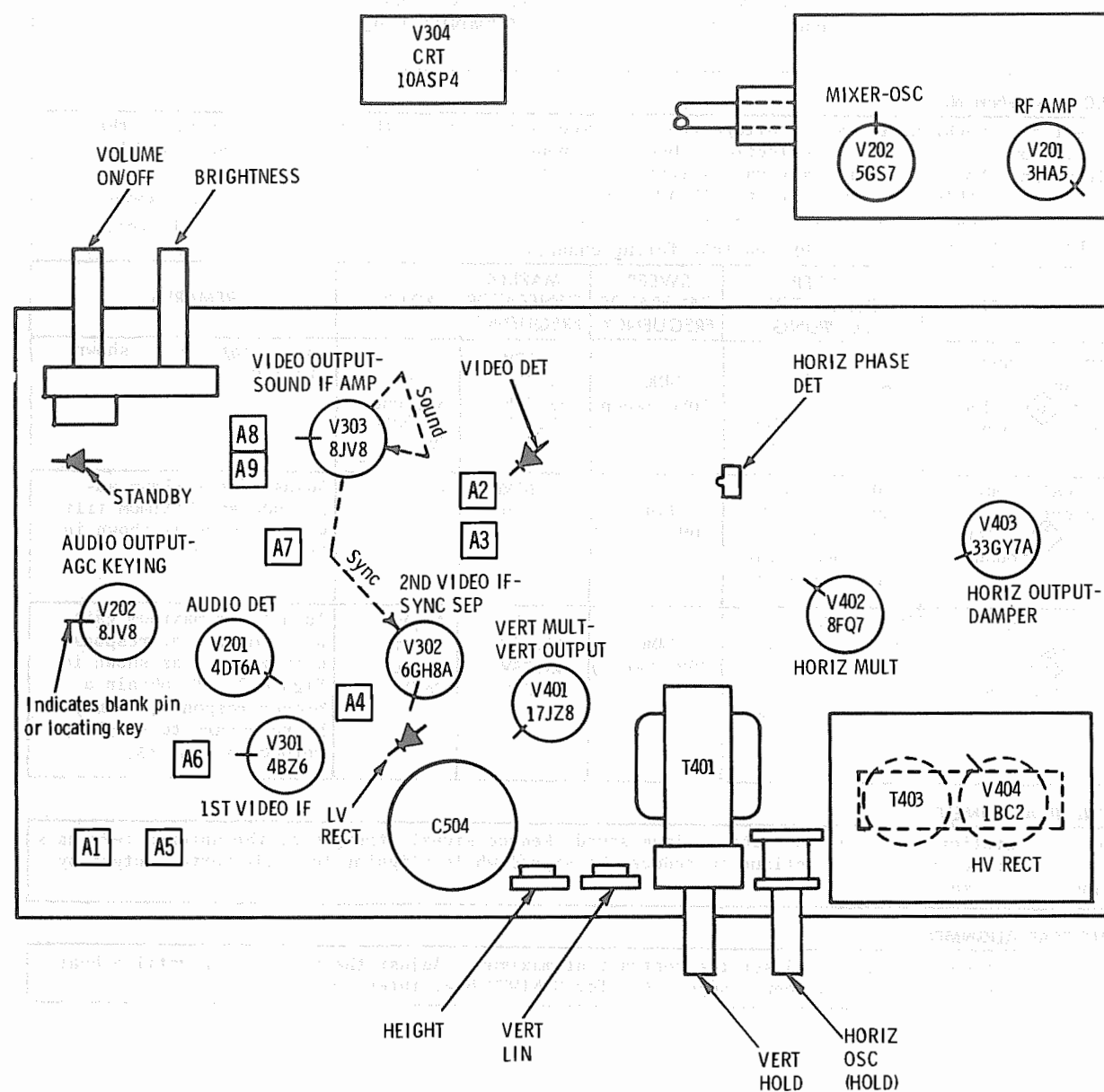
## RESISTANCE MEASUREMENTS

[illegible]

# THIS READING WILL VARY DEPENDING UPON THE CONDITION OF THE ELECTROLYTIC IN THE CIRCUIT. † MEASURED FROM CATHODE OF CR501.  
\* READING DEPENDS UPON POLARITY OF METER CONNECTIONS. NC NO CONNECTION ‡ MEASURED FROM PIN 4 OF V403.



## TUBE PLACEMENT CHART



## TROUBLESHOOTING CHECK CHART

The following chart lists component failures most likely to produce the indicated symptom.

**SWEEP**

No raster, has sound V402,V403,V404,V304  
No vert. deflection V401  
Poor vert. lin. or foldover V401  
Poor horiz. lin. or foldover V403  
Narrow picture CR501, V402, V403  
Vert. off freq.V401  
Horiz. off freq. CR401, V402

**PICTURE or SOUND**

No pic, no sound, no raster R502,CR501, V403.  
No pic, no sound, has raster V301,V302,V303; V202\*  
No pic, no sound, has snow V201, V202 \* \*(Tuner)  
No pic, has sound, no raster V304

**SYNC**

No vert. sync V401  
No horiz. sync CR401, V402  
No vert. or horiz. sync V302

Has pic, no sound V201, V202, V303.  
Overloaded picture V202, CR301

This receiver employs a series filament circuit; an open filament in any tube will cause the set to be inoperative.

ADMIRAL CHASSIS  
TR2-1A, TR2-2A, TR3-1A

**FOLDER 1**



TV ALIGNMENT INSTRUCTIONS

Use an isolation transformer, or observe polarity, and maintain line voltage at 117VAC. Allow a 20-minute warm-up period for the receiver and test equipment.  
Suggested Alignment Tools:  
A1 thru A9 ..... GC ELECTRONICS 8606, 8606L, 8869  
Tuner IF Output Coil .. GC ELECTRONICS 9296, 9297, 9300

VIDEO IF ALIGNMENT

Connect the synchronized sweep voltage from the sweep generator to the horizontal input of the oscilloscope for horizontal deflection. Use only enough generator output to provide a usable indication. Note: Response may vary slightly from that shown. Connect a variable bias supply to the IF AGC line (point A) and adjust to obtain a response curve which shows no indication of overload. Disable oscillator section of mixer-oscillator. Set the channel selector to any non-interfering channel.

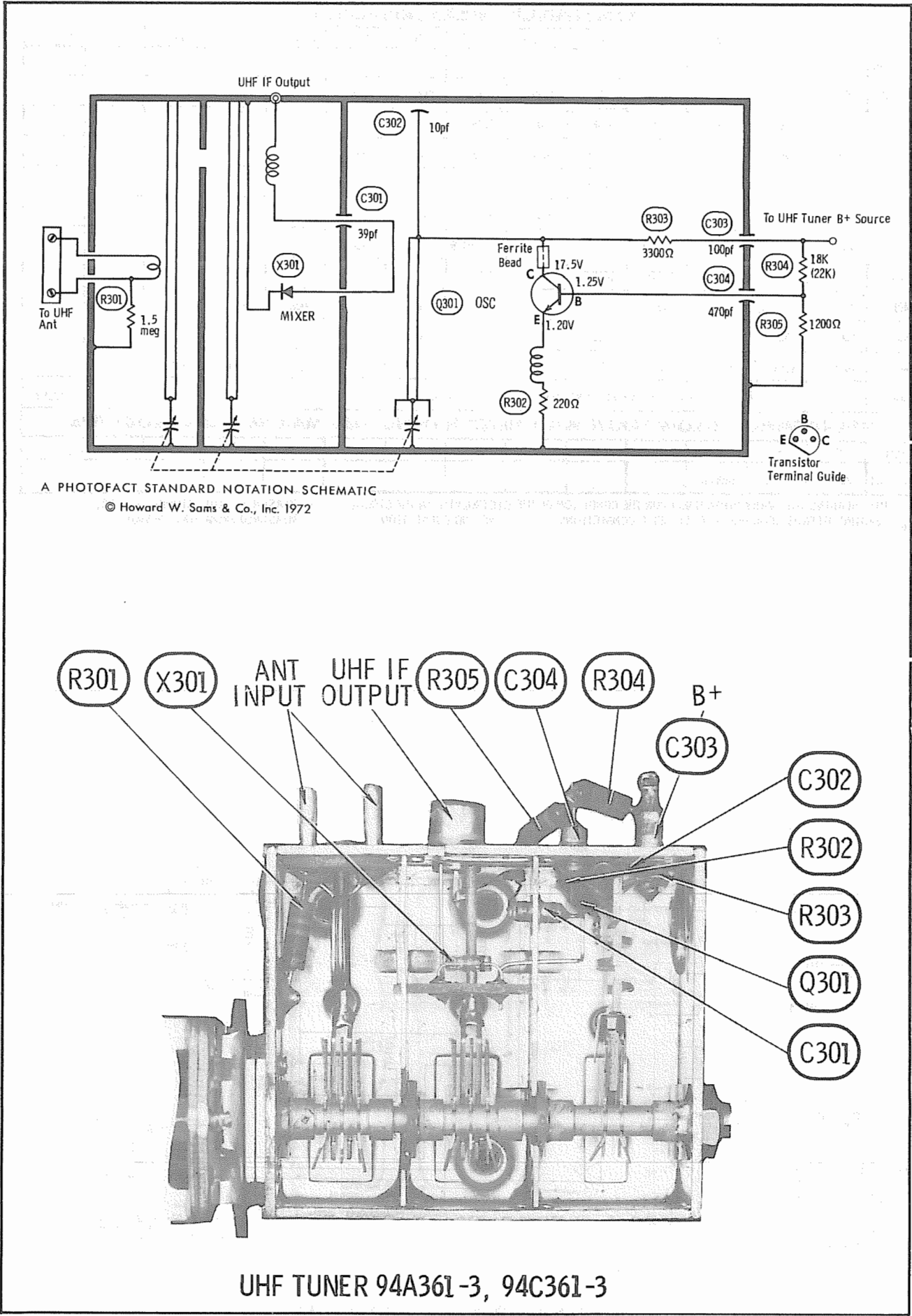
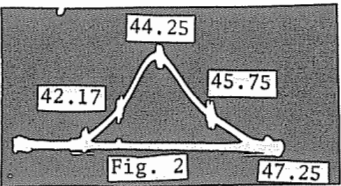
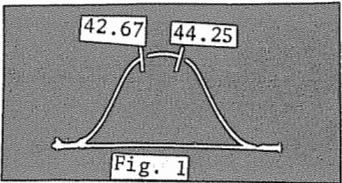
INDICATOR	SWEEP GENERATOR COUPLING	SWEEP GENERATOR FREQUENCY	MARKER GENERATOR FREQUENCY	ADJUST	REMARKS
Vertical input of scope to Point B, low side to ground.	High side to ungrounded tube shield over Mixer-Osc., low side to ground.	44MC (10MC Sweep)	42.17MC 44.25MC 45.75MC 47.25MC	A1,A2, A3,A4, A5,Tuner IF Output Coil	Adjust markers as shown in Figure 2.
Vertical input of scope to Point B, low side to ground.	High side to ungrounded tube shield over Mixer-Osc., low side to ground.	44MC (10MC Sweep)	42.67MC 44.25MC	A2 A3	Adjust for maximum amplitude and MINIMUM tilt with markers as shown in Figure 1.
Vertical input of scope to Point B, low side to ground.	High side to ungrounded tube shield over Mixer-Osc., low side to ground.	44MC (10MC Sweep)	42.17MC 44.25MC 45.75MC 47.25MC	A4,A5, Tuner IF Output Coil	Adjust for maximum gain and symmetry of response with markers as shown in Figure 2. To obtain a proper response, it may be necessary to slightly retouch A2 and A3.

SOUND IF ALIGNMENT

Tune in a station and adjust A6 for maximum sound. Reduce signal strength at the antenna terminals until distortion appears. Continue to reduce the signal while aligning for undistorted output by adjusting A7 and A8.

4.5MC TRAP ALIGNMENT

Tune in a strong TV signal and set the contrast at maximum. Adjust the fine tuning until a beat pattern is visible on the screen. Adjust A9 for MINIMUM beat interference.



VHF TUNER PARTS LIST AND DESCRIPTION

(When ordering parts, state Model, Part Number, and Description.)

TUBES VHF TUNER 94A363-6, 94C363-6, -7

AMPEREX			GENERAL ELECTRIC			RCA			SYLVANIA		
ITEM No.	USE		TYPE			ITEM No.	USE		TYPE		
V201	RF Amp		3HA5 (3HQ5)*			V202	Mixer - Osc		5GS7		

\* Alternate used in some versions.

CAPACITORS

ITEM No.	RATING		REMARKS	REPLACEMENT DATA									
				AEROVOX PART No.	CENTRALAB PART No.	CORNELL-DUBILIER PART No.	ELMENCO PART No.	MALLORY PART No.	SPRAGUE PART No.				
C201a	27pf	10%	NP0-DI 22	TCZ-27	NP027	CCTO-270	CN0427	10TCC-Q27					
b	27pf	10%			NP027	CCTO-270	CN0427	10TCC-Q27					
C202a	27pf	10%			TCZ-27	NP027	CCTO-270	CN0427	10TCC-Q27				
b	27pf	10%			TCZ-27	NP027	CCTO-270	CN0427	10TCC-Q27				
C203	100pf				DTZ-100	NP0100	CCTO-101	CN0310	10TCC-T10				
C204	27pf				TCZ-27	NP027	CCTO-270	CN0427	10TCC-Q27				
C205	22pf				DTZ-22	NP022	CCTO-220	CN0422	10TCC-Q22				
C206	27pf				TCZ-27	NP027	CCTO-270	CN0427	10TCC-Q27				
C207	5pf	+.25			GPD COJ3R3K	DTZ-15 DTZ-3R3	NP015 NP03P3	CCTO-150	CN0415 CN0533	10TCC-V50			
C208	3pf	10%								10TCC-V30			
C209	15pf	10%	10TCC-Q15										
C210	3.3pf		10TCC-V33										
C211	50pf												
C212	.001												
C213	3pf												
C214	33pf		10TCC-V30										
C215	.001												
C216	.001		GPD X5F102K	00-102						GP1000	CCD-102	GP210	10TS-D10
C217	1.5pf		GPD COJ1R5D	DTZ-1R5	NP01P5		CN0515	10TCC-V15					
C218	.001		GPD X5F102K	DD-102	GP1000	CCO-102	GP210	10TS-D10					
C219	.001												
C220	.001												
C221	3pf												
C222	.001												
C223	.001												
C224	50pf												
C225	2.7pf	+.25							DTZ-50	NP050	CCTO-510	CN0450	10TCC-Q50
C226	10pf	+.25							DTZ-10	NP010	CCTO-100	CN041D	10TCC-Q10
C227	.001								GPD X5F102K	DD-102	GP1000	CCD-102	GP210
C228	.001												

UHF TUNER PARTS LIST AND DESCRIPTION

(When ordering parts, state Model, Part Number, and Description.)

TRANSISTORS UHF TUNER 94A361-3, 94C361-3

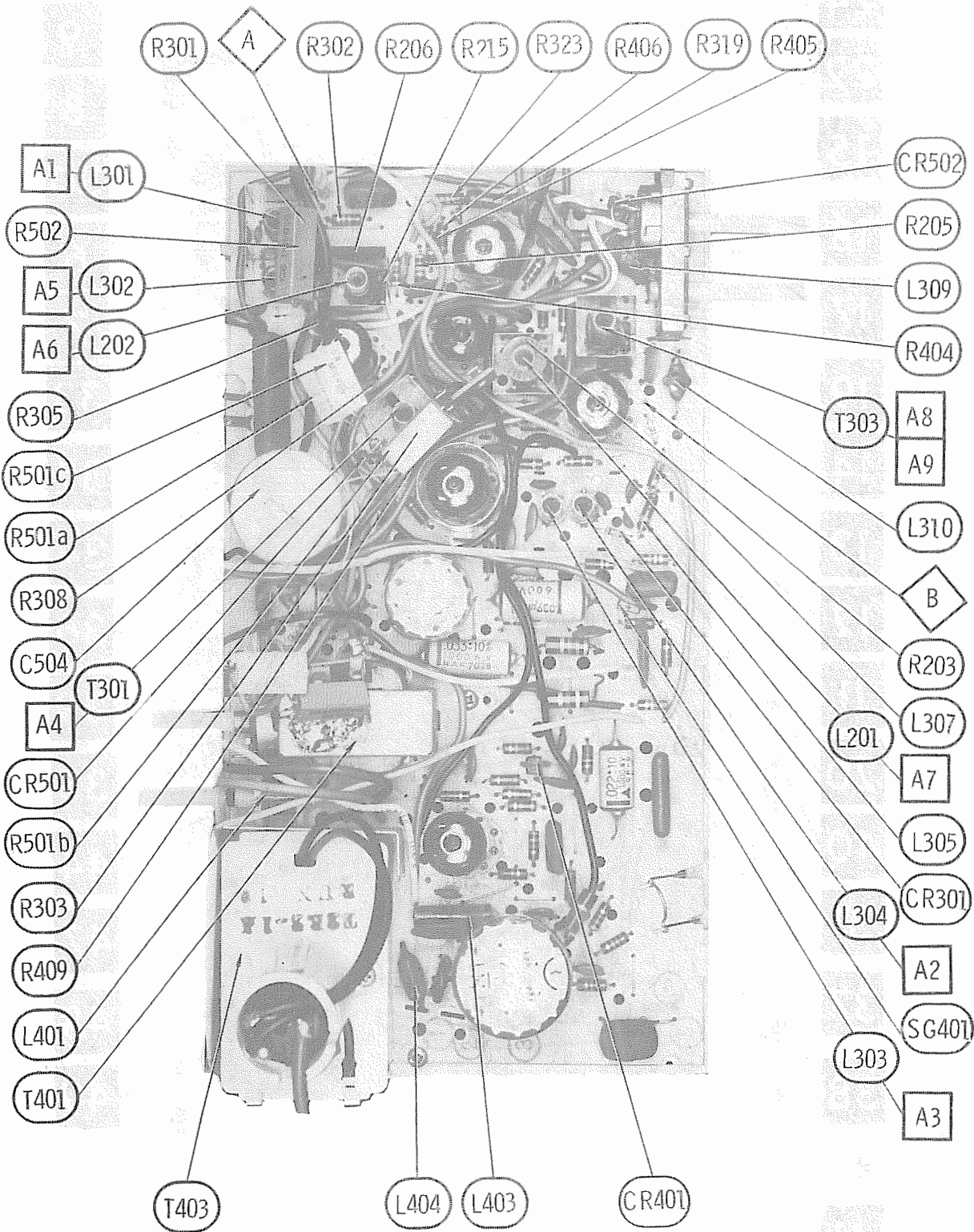
ITEM No.	TYPE No.	FUNCTION	REPLACEMENT DATA					
			MFGR. PART No.	GENERAL ELECTRIC PART No.	INTERNATIONAL RECTIFIER PART No.	MOTOROLA PART No.	RCA PART No.	SYLVANIA PART No.
Q301		UHF Osc.		GE-11	TR-22	HEP56	SK3019	ECG 108

POWER RECTIFIERS & SIGNAL DIODES

ITEM No.	MFGR. PART OR TYPE No.	REPLACEMENT DATA				NOTES
		GENERAL ELECTRIC PART No.	INTERNATIONAL RECTIFIER PART No.	RCA PART No.	SYLVANIA PART No.	
X301	1N82AG	1N82A	1N82AG	SK3089	ECG 112	

CAPACITORS

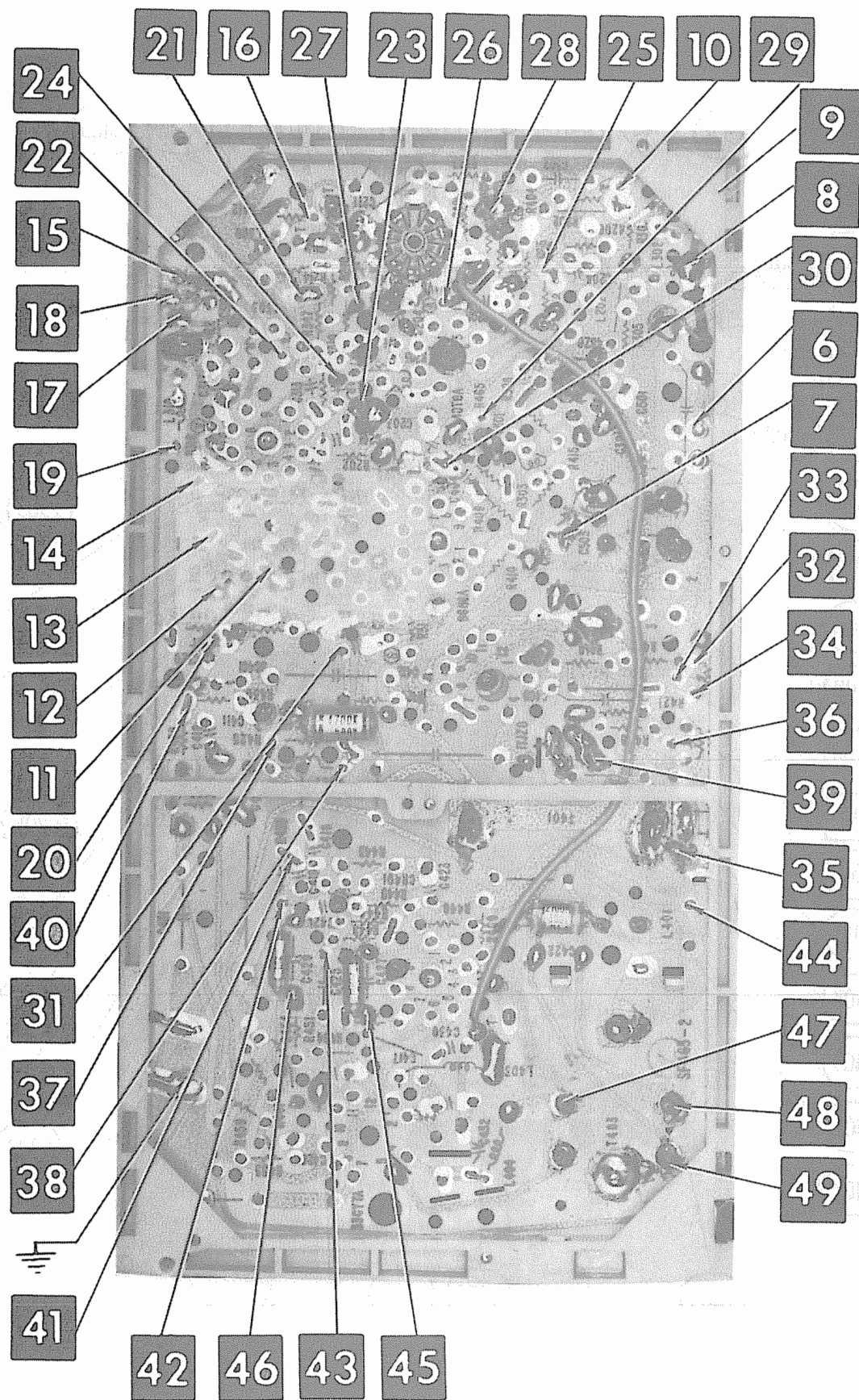
ITEM No.	RATING	REMARKS	REPLACEMENT DATA					
			AEROVOX PART No.	ARCO/ELMENCO PART No.	CENTRALAB PART No.	CORNELL-DUBILIER PART No.	MALLORY PART No.	SPRAGUE PART No.
C301	39pf							
C302	10pf							
C303	100pf							
C304	470pf							



ADMIRAL CHASSIS  
TR2-1A, TR2-2A, TR3-1A

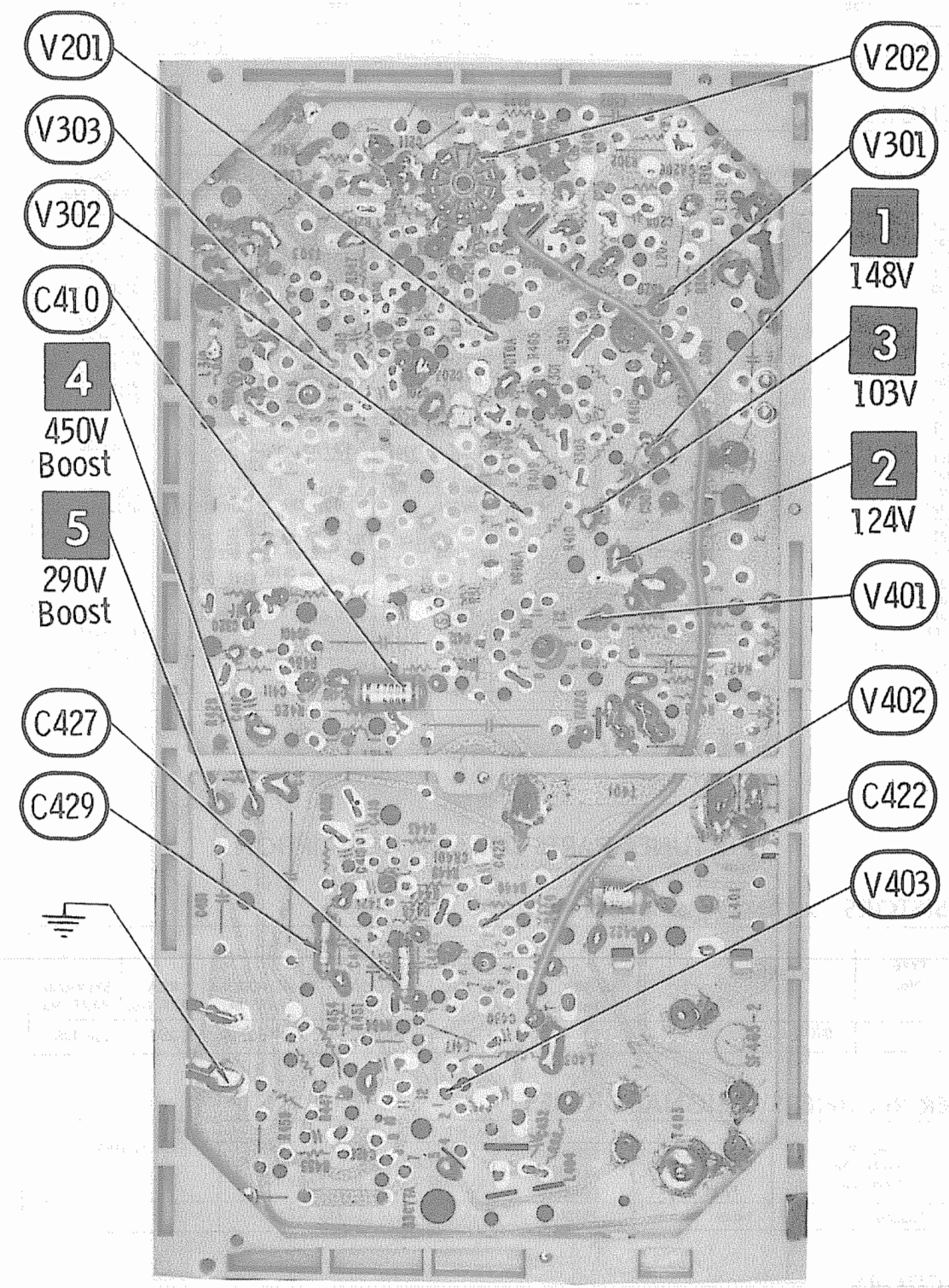
FOLDER 1



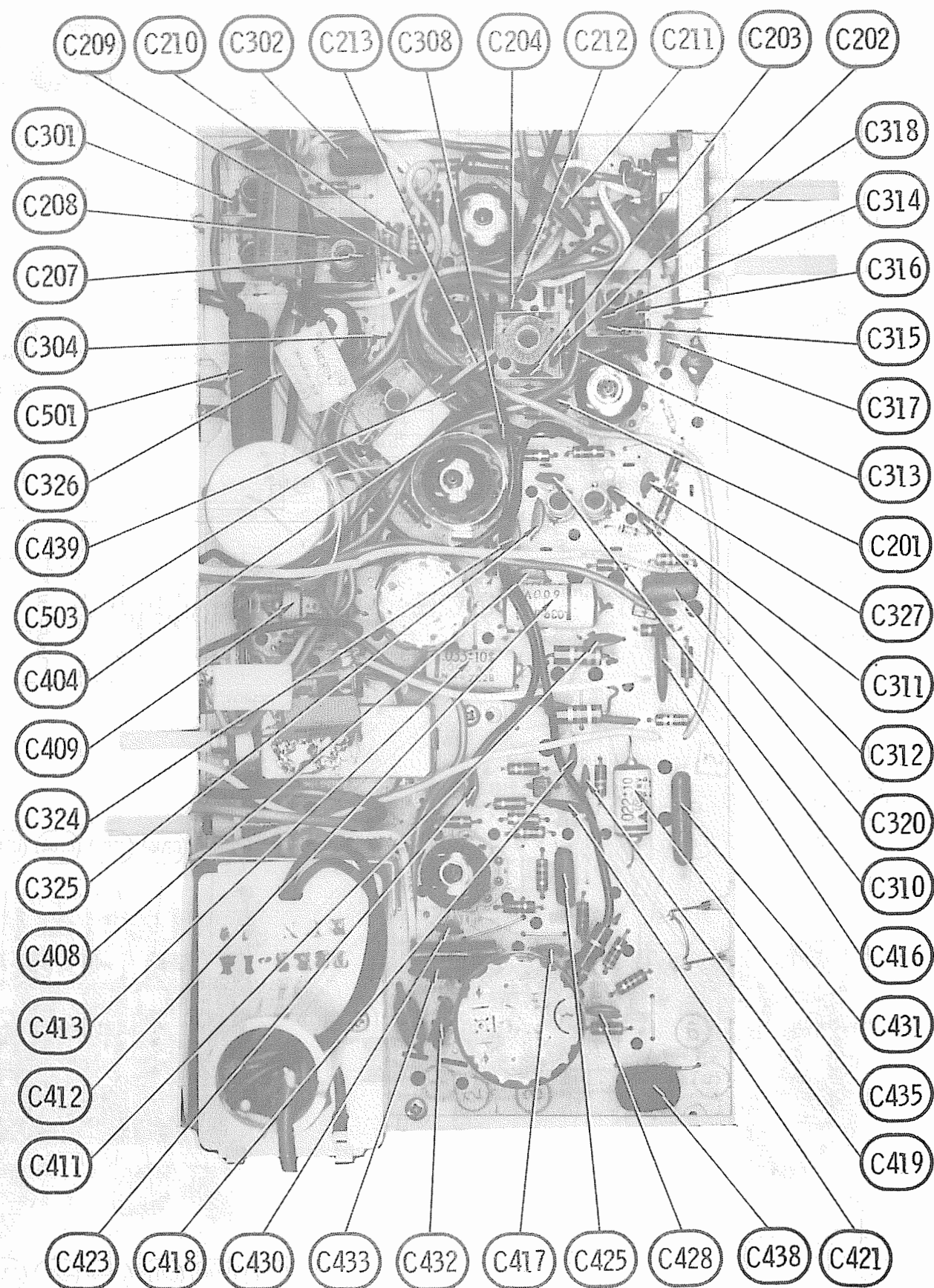
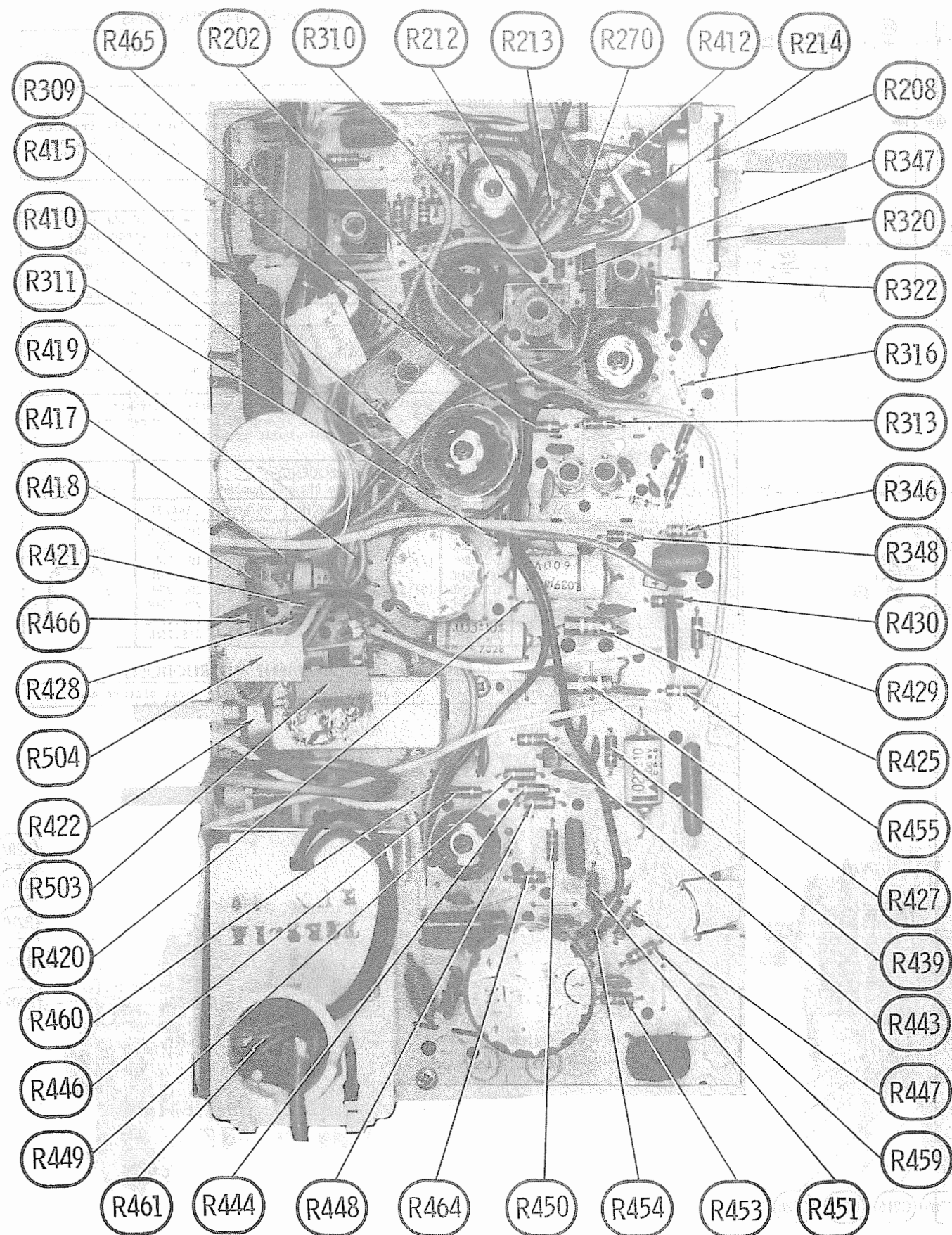


PRINTED BOARD-BOTTOM VIEW

ARROWS INDICATING TUBE LOCATIONS ARE POINTING TO PIN 1 UNLESS OTHERWISE INDICATED



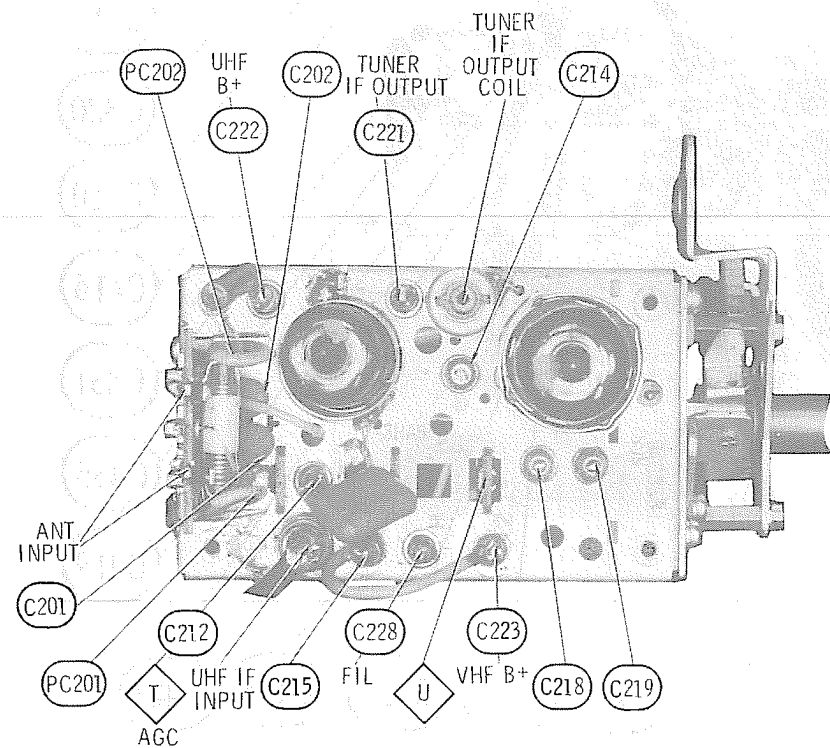
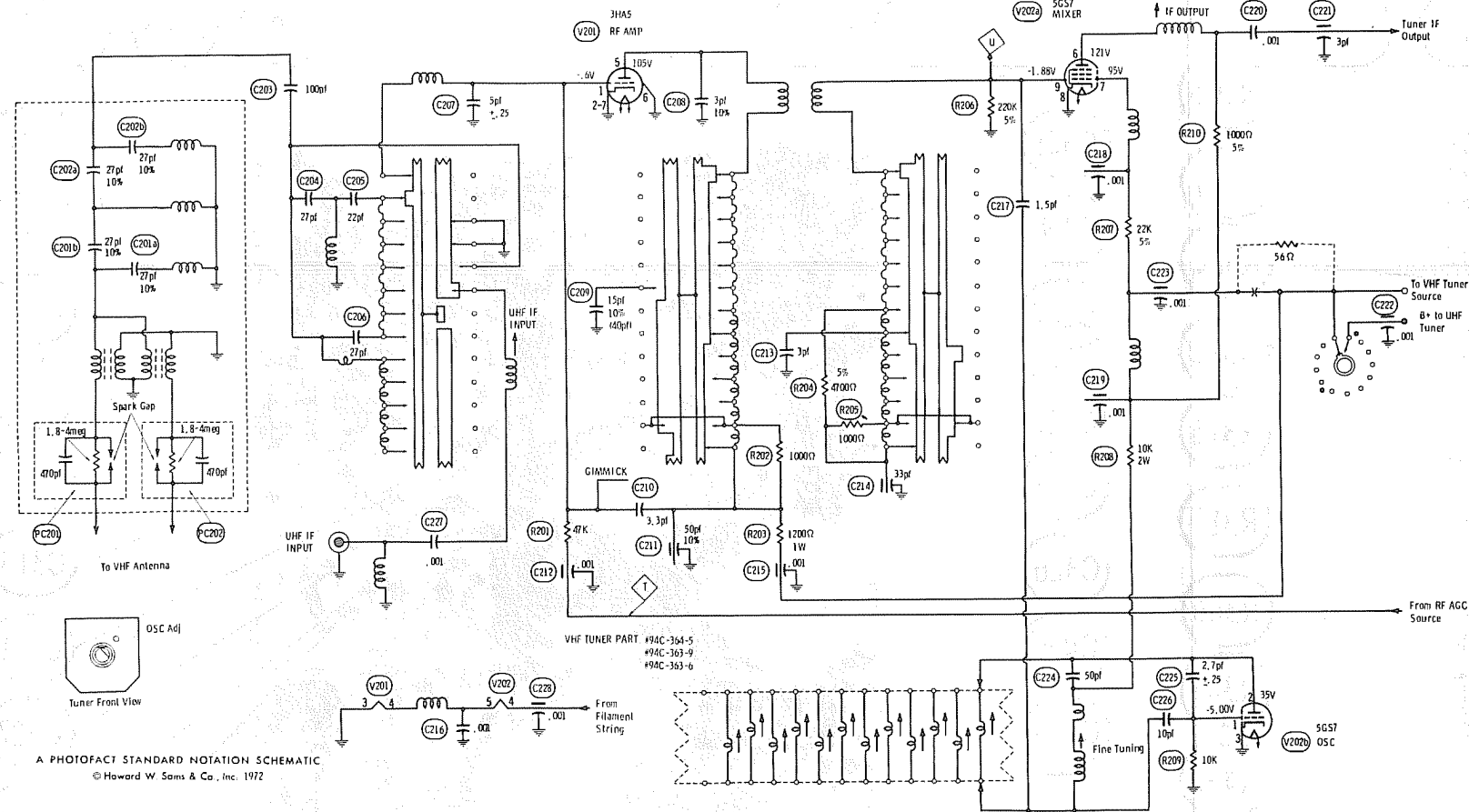




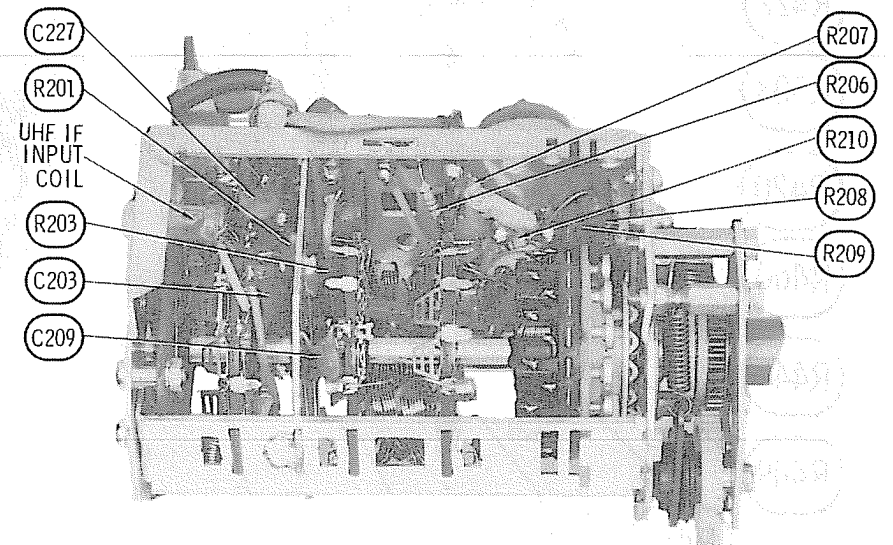
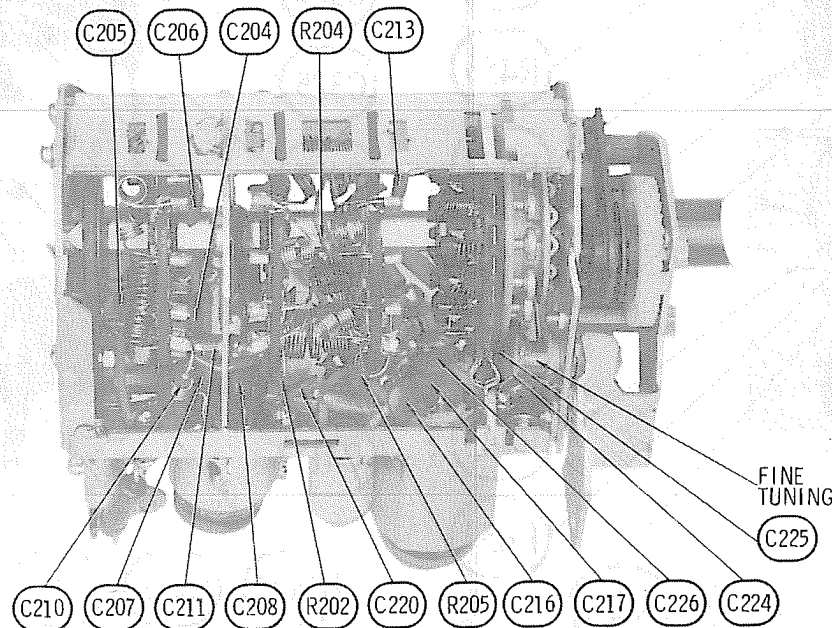
PRINTED BOARD-TOP VIEW

ADMIRAL CHASSIS  
TR2-1A, TR2-2A, TR3-1A

FOLDER 1



VHF TUNER 94A363-6, 94C363-6, -7



## VHF TUNER ALIGNMENT INSTRUCTIONS

Suggested Alignment Tools:

UHF Input Coil .. GC ELECTRONICS #8868,8987,9089

### OSCILLATOR ADJUSTMENTS

Individual oscillator slugs are accessible through a hole in the front of the tuner. Set the fine tuning at mid-range. Starting with the highest active channel, adjust the appropriate slugs, in descending order, for the best picture and sound.

### RF AND MIXER ADJUSTMENTS

Connect the sweep generator across antenna terminals with 120-ohm carbon resistor in each lead. Refer to chart below for generator frequencies. Connect the synchronized sweep voltage from the sweep generator to the horizontal input of the scope for horizontal deflection. Use 10MC sweep unless otherwise noted. Connect a variable bias to the RF AGC line at Point  $\diamond$ . Adjust bias to obtain response curve showing no overload.

CHANNEL	CONNECT SCOPE	REMARKS
13	Vertical input to Point $\diamond$ , low side to ground.	Expand or compress appropriate coils for maximum gain and symmetry of response similar to Fig. 201 with markers as shown.
12 thru 2	Vertical input to Point $\diamond$ , low side to ground.	Check all channels and make compromise adjustments by expanding or compressing appropriate coils if necessary.

GENERATOR FREQUENCY  
Numbers in ( ) indicate channel number

SWEEP	MARKER	SWEEP	MARKER	SWEEP	MARKER
(2) 57MC	55.25MC	(6) 85MC	83.25MC	(10) 195MC	193.25MC
	59.75MC		87.75MC		197.75MC
(3) 63MC	61.25MC	(7) 177MC	175.25MC	(11) 201MC	199.25MC
	65.75MC		179.75MC		203.75MC
(4) 69MC	67.25MC	(8) 183MC	181.25MC	(12) 207MC	205.25MC
	71.75MC		185.75MC		209.75MC
(5) 79MC	77.25MC	(9) 189MC	187.25MC	(13) 213MC	211.25MC
	81.75MC		191.75MC		215.75MC

FIG. 201

SOUND VIDEO



## UHF TUNER ALIGNMENT INSTRUCTIONS

Select a UHF station. Adjust UHF IF input coil for best picture and sound.



PARTS LIST AND DESCRIPTION (CONTINUED)

(When ordering parts, state Model, Part Number, and Description.)

Replacement parts shown may be superseded by the availability of newly intraduced replacements.  
Have your local distributor check Sams COUNTER FACTS for the most up-to-date replacement.

TRANSFORMER (Audio Output)

ITEM No.	IMPEDANCE		REPLACEMENT DATA				NOTES
	PRI.	SEC.	MFGR. PART No.	STANCOR PART No.	THORDARSON PART No.	TRIAD PART No.	
T201	9700	3.2	79A124-5 (T79C124-5-1)				

SPEAKER

ITEM No.	TYPE			REPLACEMENT DATA		NOTES
				MFGR. PART No.	QUAM PART No.	
SP1	3"	PM	3.2 ohms	78A201-2	30A05	Used in Models: 12P261/275/280/287 and SK9P248/M, SK9P290/M Used in Models: 9P239/245/250/257.
		PM	3.2 ohms	78A201-5		

MISCELLANEOUS

ITEM No.	PART NAME	PART No.	NOTES
SG401	VHF Antenna	69A344-2	JFD Replacement PAN-13 JFD Replacement TA-544
	UHF Antenna	69A304-2	
	VHF Tuner	94C363-6	
	VHF Tuner	94A363-6	
	VHF Tuner	94A281-15	
	VHF Tuner	94C363-7	
	VHF Tuner	94C281-16	
	UHF Tuner	94C361-3	
	UHF Tuner	94A361-3	
	UHF Tuner	94A296-4	
	UHF Tuner	94C296-4	
	Spark Gap	62A2-1	
	Rod	33A1213-3	Horizontal Adjustment HV Rectifier Tube
	Socket	87A25-26	

CABINETS & CABINET PARTS (When ordering specify model, chassis & color)

ITEM	PART No.	ITEM	PART No.
MODELS: 9P239, 9P245, 9P250, 9P257		MODELS: 12P261, 12P275, 12P280, 12P287	
Cabinet Front Assembly Model: 9P239	34A343-2	Cabinet Front Assembly Model: 12P261	799A3175
Cabinet Front Assembly 9P245	799A3140	Cabinet Front Assembly 12P275	799A3176
Cabinet Front Assembly 9P250	799A3141	Cabinet Front Assembly 12P280	799A3177
Cabinet Front Assembly 9P257	799A3142	Cabinet Front Assembly 12P287	799A3178
Cabinet Back 9P239	33A1364-2	Cabinet Back 12P261	33A1418-5
Cabinet Back 9P245	33A1364-6	Cabinet Back 12P275	33A1418-6
Cabinet Back 9P250	33A1364-7	Cabinet Back 12P280	33A1418-1
Cabinet Back 9P257	33A1364-8	Cabinet Back 12P287	33A1418-4
Handle 9P245	37A290-8	Handle 12P275	37A290-11
Handle 9P250/257	37A290-7	Handle 12P280/287	37A290-7
Knob-VHF Channel Selector 9P239	33A1344-5	Knob-VHF Channel Selector 12P261	33A1344-7
VHF Channel Selector 9P245/250/257	33A1344-6	VHF Channel Selector 12P275/280/287	33A1344-3
VHF Fine Tuning	33A1024-25	Fine Tuning 12P261	33A848-37
UHF Indicator Disc	33A919-8	Fine Tuning 12P275/280/287	33A848-36
Vertical Hold, Video	33A1269-3	UHF Indicator 12P261	33A846-10
MODELS: SK9P248, SK9P248M, SK9P290, SK9P290M		UHF Indicator 12P275/280/287	33A846-8
Cabinet Front Assembly Models: SK9P248/M	799A3179	Vertical, Video	33A1265-2
Cabinet Front Assembly SK9P290/M	799A3438	MODELS: SK9P248, SK9P248M, SK9P290, SK9P290M	
Cabinet Back SK9P248/M	33A1364-5	Knob-VHF Channel Selector	33A1344-6
Cabinet Back SK9P290/M	33A1364-7	Fine Tuning, VHF	33A1024-25
Handle SK9P248/M	37A290-6	UHF Indicator Disc	33A919-8
Handle SK9P290/M	37A290-7	Volume, Video	33A1269-3

WIRING DATA

High Voltage Lead	Use BELDEN No. 8869 (17KV)
Shielded Hook-up Wire	Use BELDEN No. 8885 (Single Conductor)
General-use Unshielded Hook-up Wire	Use BELDEN No. 8738 (Two Conductor)
300-Ohm Tuner Input Lead	Use BELDEN No. 8530 (Solid) Available in 12 Colors
300-Ohm Antenna Lead-in	Use BELDEN No. 8524 (Stranded) Available in 12 Colors
Antenna Rotor Cable	Use BELDEN No. 8225 or 8275
	Use BELDEN No. 8464 (Flat) or 8484 (Round) - 4 Conductor
	8485 (Round) - 5 Conductor
	8488 (Round) - 8 Conductor

PARTS LIST AND DESCRIPTION

(When ordering parts, state Model, Part Number, and Description.)

Replacement parts shown may be superseded by the availability of newly introduced replacements.  
Have your local distributor check Sams COUNTER FACTS for the most up-to-date replacement.

TUBES

AMPEREX			GENERAL ELECTRIC		RCA		SYLVANIA	
ITEM No.	USE	TYPE	ITEM No.	USE	TYPE	ITEM No.	USE	TYPE
V201	Audio Detector	40T6A	V401	Vert Mult - Vert Output	17JZ8			
V202	Audio Output - AGC Keying	8JVB	V402	Horiz Mult	8FQ7			
V301	1st Video IF	4BZ6	V403	Horiz Output - Damper	33GY7A			
V302	2nd Video IF - Sync Separator	6GH8A	V404	HV Rectifier	1BC2			
V303	Video Output - Sound IF Amp	8JVB						

PICTURE TUBE

ITEM No.	REPLACEMENT DATA				NOTES
	MFGR. PART No.	GENERAL ELECTRIC PART No.	RCA PART No.	SYLVANIA PART No.	
V304	10ASP4			9AEP4 (1)	(1) Silver Screen "85" Used in Models: 9P239, 9P245/250/257, SK9P248/M, SK9P290/M.
	12VAEP4				Used in Models: 12P261/275/280/287.

POWER RECTIFIERS & SIGNAL DIODES

ITEM No.	MFGR. PART OR TYPE No.	REPLACEMENT DATA				NOTES
		GENERAL ELECTRIC PART No.	INTERNATIONAL RECTIFIER PART No.	RCA PART No.	SYLVANIA PART No.	
CR301	93A8-1 (1H60)	1N60	1N60	SK3088	ECG 109	(1) Some versions may use Part #93A59-10 in this application.
CR401	93A5-9 (1)	66C1	OD04		ECG 113	
CR501	93A52-1	GE-504A	806 or 5A6D	SK3017A or SK3032	ECG 116 or ECG 117	
CR502	93A52-1	GE-504A	806 or 5A6D	SK3017A or SK3032	ECG 116 or ECG 117	

ELECTROLYTIC CAPACITORS

ITEM No.	RATING	REPLACEMENT DATA							
		MFGR. PART No.	AEROVOX PART No.	ARCO PART No.	CENTRALAB PART No.	CORNELL-DUBILIER PART No.	GENERAL ELECTRIC PART No.	MALLORY PART No.	SPRAGUE PART No.
C504a	150 165V	67A30-10	AFH3-13-75			CC0129.7A	XC3-48.05	FP318.86	TVL-3489.3
b	150 150V								
c	200 150V								

CAPACITORS

ITEM No.	RATING	REMARKS	REPLACEMENT DATA						
			AEROVOX PART No.	ARCO/ELMENC0 PART No.	CENTRALAB PART No.	CORNELL-DUBILIER PART No.	MALLORY PART No.	SPRAGUE PART No.	
C100	470	1.4KV	HVD-30-470	3CCD-471	DD30-471	HV3-470	6HV-347	3DGA-T47	
C133	.1	200V	DBE2P1	2DP-3-104		DPMS2P1	PVC201	2PS-P10	
C137	.047	200V	V1614S47	4DP-3-473		DPMS6S47	PVC4147	4PS-S47	
C201	.001		GPD X5F102K	CCD-102		GP1000	GP210	10TS-010	
C202	4.5	NPO 500V 5%	GPD COH4R7K			NP04P7	CN0547	10TCC-V47	
C203	82	NPO 500V 5%				CCT0-820	CN0482	10TCC-Q82	
C204	820					CCD-821	GP382	10TS-T82	
C207	18	500V 5%	GPD X5F821K			CCD-180	CN0418	10TCC-Q18	
C208	.02	500V				DD-203	GP120	10TS-S20	
C209	.0033		GPD Z5U203P			CCD-203	JF233	10TS-D33	
C210	.0022		GPD X5R332K			CCD-332	GP222	10TS-D22	
C211	.005	1KV 10%	GPD X5F222K			CCD-222	GP2200	10TS-D22	
C212	.01		GPD X5R502K			CCD-502	GP5000	10TS-D50	
C213	5.6	NPO 500V 5%	GPO X 5103K			CCD-103	GP10000	10TS-S10	
C301	8.2	N470 500V 5%						10TCC-V56	
C302	.1	200V						10TCY-V82	
C304	560	500V 10%						2PS-P10	
C308	.0015		DBE2P1	2DP-3-104		DPMS2P1	PVC201	10TS-T56	
C310	820 N2200	500V 10%		CCD-561		GP560	GP356	10TS-D15	
C311	4.5	NPO 500V 5%	GPD X5F152K	CCD-152			GP215	10TS-D15	
C312	4.5	NPO 500V 5%						10TCY-T82	
		#65A10-302	GPD COH4R7K					10TCC-V47	
			GPD COH4R7K						

ADMIRAL CHASSIS  
TR2-1A, TR2-2A, TR3-1A

FOLDER 1

PARTS LIST AND DESCRIPTION (CONTINUED)

(When ordering parts, state Model, Part Number, and Description.)

Replacement parts shown may be superseded by the availability of newly introduced replacements. Have your local distributor check Sams COUNTER FACTS® for the most up-to-date replacement.

CAPACITORS (cont)

ITEM No.	RATING	REMARKS	REPLACEMENT DATA					
			AEROVOX PART No.	ARCO/ELMENC0 PART No.	CENTRALAB PART No.	CORNELL-DUBILIER PART No.	MALLORY PART No.	SPRAGUE PART No.
C313	47 NPO 500V			CCT0-470	DTZ-47	NP047	CN0447	10TCC-Q47
C314	47 NPO 500V			CCT0-470	DTZ-47	NP047	CN0447	10TCC-Q47
C315	4.7 500V 10%		GPD C0H4R7K		DTZ-4R7	NP04P7	CN0547	10TCC-V47
C316	47 NPO 500V 5%			CCT0-470	DTZ-47	NP047	CN0447	10TCC-Q47
C317	.01 500V 10%		GPD X5S103K	CCD-103	DD-103	GP10000	JF110	10TS-S10
C318	.01 500V 10%			CCT0-200	DTZ-20	NP020	CN0420	10TCC-Q20
C320	.1 200V		DBE2P1	20P-3-104		DPMS2P1	PVC201	2PS-P10
C324	.0012 10%			CCD-122	DD-122	GP1200	GP212	10TS-D12
C325	.0012 10%			CCD-122	DD-122	GP1200	GP212	10TS-D12
C326	.0012 10%			CCD-122	DD-122	GP1200	GP212	10TS-D12
C327	6.8 NPO 500V 10%		GPD C0H6R8K		DTZ-6R8	NP06P8	CN0568	10TCC-V68
C404	.0047		GPD X5R472K	CCD-472	DD-472G	GP4700	JF247	10TS-D47
C408	.0012 10%			CCD-122	DD-122	GP1200	GP212	10TS-D12
C409	.022 600V 10%		DBE6S22	40P-2-223		DPMS6S22	PVC6122	4PS-S22
C410	.0047 500V 10%		DBE6D47	60P-1-472		QMS6047	PVC6247	6PS-D47
C411	.001 1KV		GPD X5F102K	CCD-102	DD-102	GP1000	GP210	10TS-D10
C412	.039 600V 10%		DBE6S39	60P-3-393		DPMS6S39	PVC6139	6PS-S39
C413	.033 1KV 10%			CCD-502	DD-502	GP5000	JF250	10TS-D50
C416	.005 1KV 10%		GPD X5R502K	CCD-102	DD-102	GP1000	GP210	10TS-D10
C417	.001 1KV		GPD X5F102K	*	TCL-100	*	*	10TCW-T10
C418	100 N1500 500V	#65A132-3		*			*	10TCY-T18
C419	180 N2200 500V 10%	#65A10-344		*			*	10TS-D33
C421	.0033		GPD X5R332K	CCD-332	DD-332	GP3300	JF233	10TS-D33
C422	.0027 500V 10%			DM-19-272	CPR-2700J		SX227	MG-227
C423	.0022		GPD X5F222K	CCD-222	DD-222	GP2200	GP222	10TS-D22
C425	.047 200V		V1614S47	40P-3-473		DPMS6S47	PVC4147	4PS-S47
C427	820 500V 5%		GPD X5F821K	CCD-821	DD-821	GP820	GP382	10TS-T82
C428	.0047		GPD X5R472K	CCD-472	DD-472G	GP4700	JF247	10TS-D47
C429	680 500V 10%			OM-16-681	CPR-680J		SX368	MS-368
C430	5 N750 1KV 10%			CCTN-050	DTN-5	N5	CN7550	10TCU-V50
C431	.047 600V		DBE6S5	60P-3-503		DPMS6S5	PVC615	6PS-S50
C432	100 N1500 4KV 10%	#65A10-212		*			*	
C433	680 N1500 1KV 10%	#65A10-440		*			*	
C435	.022 1KV 10%		DBE6S22	40P-2-223		DPMS6S22	PVC6122	4PS-S22
C438	.047 400V		V1614S47	40P-3-473		DPMS6S47	PVC4147	4PS-S47
C439	220 500V		GPD X5F221K	CCD-221	DD-221	GP220	GP322	10TS-T22
C501	.22 500V		V1614P22	40P-5-224		DPMS4P22	PVC4022	4PS-P22
C503	.001 1KV		GPD X5F102K	CCD-102	DD-102	GP1000	GP210	10TS-D10

\* Not normally in distributor's stock. Available thru distributor on order to manufacturer.  
# Admiral Part Number

CONTROLS (All wattages 1/2 watt, or less, unless listed)

ITEM No.	FUNCTION	RESIST-ANCE	REPLACEMENT DATA				
			MFGR. PART No.	CENTRALAB PART No.	CLAROSTAT PART No.	CTS-IRC PART No.	MALLORY PART No.
R208	Volume/Switch	500K "b"	75A148-2 (3)(4)				
R320	Video (Picture)	25K "a"	(75C148-2)				
	Volume/Switch	500K	75A1-185 (5)				
	Video (Picture)	30K, 4000 Stop	75A112-13(5) (75C112-13)	F1-25K (1)(2), SN100	B47-25K-S (1)(2) or [NP-25K-S(1)(2) NML-A-300]	B11-120 (1)(2), TM4 or [BU11, CF11 (1),SS6A]*	RU253L (1)(2), SN875 or [UA253L(1)(2), SN875]
R418	Height	5meg	75A101-16 (75C101-16)	TSV-5M or T-5meg		X201R505B	
R422	Vert Hold	1.2meg	75A100-8 (75C100-8)	F1-1.5meg, SNK108	A47-1.5meg-S,RN-3 or [NP-1.5meg-S, NML-A-300]	B11-138,TM4 or [BU11,CF18,SS6A]*	RU155L,SL37,SN2000 or [UA155L,SN2000]
R466	Vert Linearity	500K	75A101-17 (75C101-17)	TSV-500K or T-500K		X201R504B	MTC55L1

(1) Connect a 4700-ohm resistor in series with the left-hand terminal of the control to the same terminal of the original control (control viewed from shaft end terminals down).  
(2) Use original nylon tab mount.  
(3) Includes R208 and R320.  
(4) Used in Models: 9P239/245/250/257, SK248/M, and SK290/M.  
(5) Used in Models: 12P261/275/280/287.  
\* "SNAPTROL"

RESISTORS (Power and Special)

ITEM No.	RATING	REPLACEMENT DATA	
		WORKMAN PART No.	MFGR. PART No.
R115	15K 2W, Film	3G-15K	60A20-103
R319	3900 2W, Film	3G-3.9K	61A24-239
R461	1 1/2W, Film	5%	60A28-97
R501a	21 5W	5W-SQ-20	61A20-53(61C20-53)
b	21 5W	5W-SQ-20	61A20-53(61C20-53)
c	21 5W	5W-SQ-20	61A20-53(61C20-53)

ITEM No.	RATING	REPLACEMENT DATA	
		WORKMAN PART No.	MFGR. PART No.
R502	5.5 Fusible	10W-SQ-5	61A48-1(61B48-1)
R503	750 5W	5W-SQ-750	61A20-108
R504	100 5W	5W-SQ-100	61A20-76 (61C20-76)

PARTS LIST AND DESCRIPTION (CONTINUED)

(When ordering parts, state Model, Part Number, and Description.)

Replacement parts shown may be superseded by the availability of newly introduced replacements. Have your local distributor check Sams COUNTER FACTS® for the most up-to-date replacement.

COILS (RF-IF)

ITEM No.	USE	REPLACEMENT DATA			
		PART No.	MEISSNER PART No.	MILLER PART No.	WORKMAN PART No.
L201a	Sound Interstage IF	72A301-2		7116-A	
b	Sound Interstage IF				
L202	Quadrature	72A132-77			
L301	47.25MC Trap	72A296-4			
L302	1st Video IF	72A296-4			
L303	Video Detector (Primary)	72A296-7			
L304	Video Detector (Secondary)	72A296-7			
L305	RF Choke (6.2uh)	73A45-243	19-1004	4610	T858
L307	RF Choke (1.9uh)	73A45-231		74F186AP	T811
L309	RF Choke (5.6uh)	73A5-20 (1)		74F566AP	T820
L310	Peaking (191uh)	73A5-40 (2) (3)	19-4201 (4)	6154 (4)	T372 (4)
L403	RF Choke (3.3uh)	73A37-17			
L404	RF Choke (1.9uh)	73A31-11		74F186AP	T811
T301	2nd Video IF	72A132-76			
T303	Sound Takeoff/4.5MC Trap	72A185-5		1471-A	

(1) Part #73A5-46 used in Chassis TR3-1A.  
(2) Part #73A5-62 used in Chassis TR3-1A.

(3) Wound on 12K resistor.  
(4) Shunt with 12K resistor.

COILS (Sweep Circuits)

ITEM No.	FUNCTION	REPLACEMENT DATA					
		MFGR. PART No.	MILLER PART No.	STANCOR PART No.	THORDARSON MEISSNER PART No.	TRIAD PART No.	WORKMAN PART No.
L401	Horiz Oscillator (Hold)	94A17-19					

TRANSFORMERS (Sweep Circuits)

ITEM No.	USE	REPLACEMENT DATA				NOTES
		MFGR. PART No.	STANCOR PART No.	THORDARSON PART No.	TRIAD PART No.	
T401	Vert Output	79A139-4 (T79D139-4)				
T402	Yoke (Horiz = 15mh) 90° (Vert = 19.8mh)	94A372-1				
T403	Yoke, Alternate Horiz Output Horiz Output, Alternate	94A372-2 (1) 79A138-11 79A138-15 (1)	HO-425			(1) Used in Chassis TR3-1A.

SWEEP COMPONENT CONNECTION DATA

ORIGINAL →	HORIZONTAL OUTPUT								VERTICAL OUTPUT							
REPLACEMENT ↓	Original Connections								Original Connections							
STANCOR	EXACT REPLACEMENT															
THORDARSON																
TRIAD																