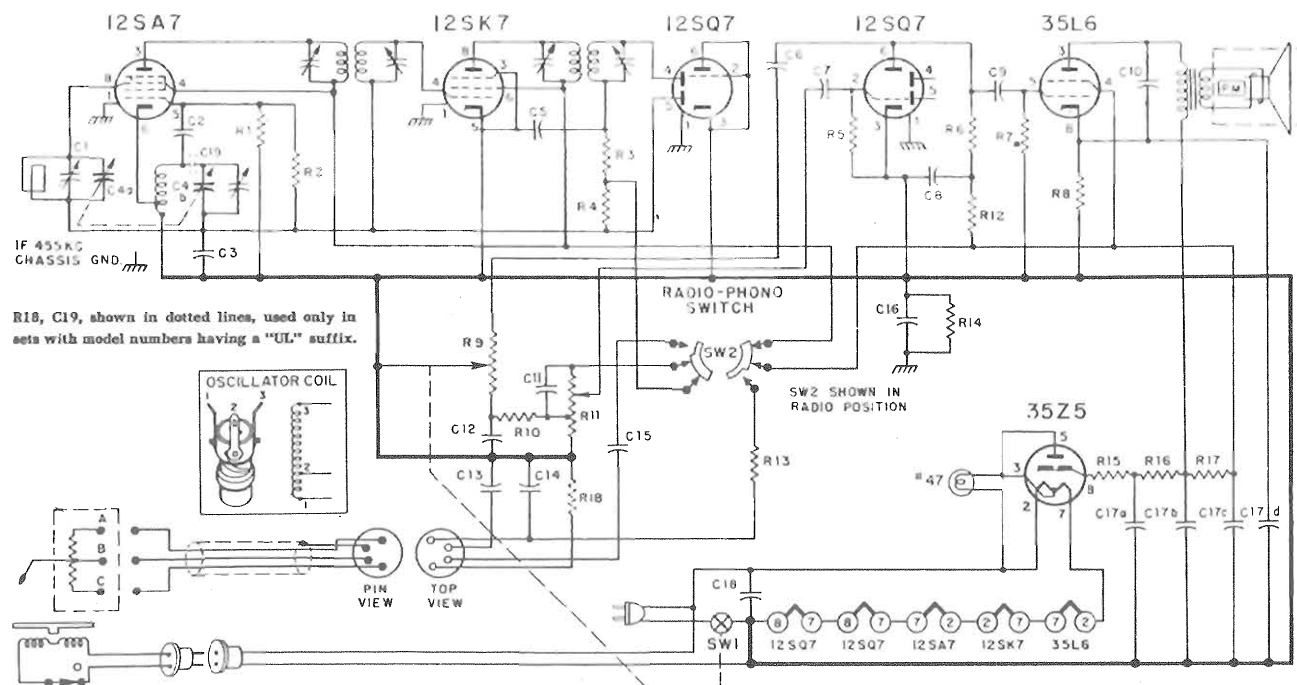


Admiral Ch. 6F1 (Models 6F10, 6F11, 6F12)



C1	3-30MMF	R1	22K
C2	50MMF	R2	10Meg
C3	.1MMF	R3	100K
C4	Tuning Gang	R4	1Meg
C5	250MMF	R5	4.7Meg
C6	.002MFD	R6	470K
C7	.01MFD	R7	470K
C8	.1MFD	R8	150Ω
C9	.01MFD	R9	2Meg
C10	.03MFD	R10	27K
C11	500MMF	R11	1Meg
C12	.01MFD	R12	47K
C13	.05MFD	R13	22K
C14	.18MFD	R14	150K
C15	.001MFD	R15	33Ω 1 W
C16	.18MFD	R16	220Ω 1 W
C17A	30MFD @ 150V	R17	1K 1 W
B	30MFD @ 150V	R18	33K
C	20MFD @ 150V		
D	20MFD @ 25V		
C18	.05MFD		
C19	.02MFD		

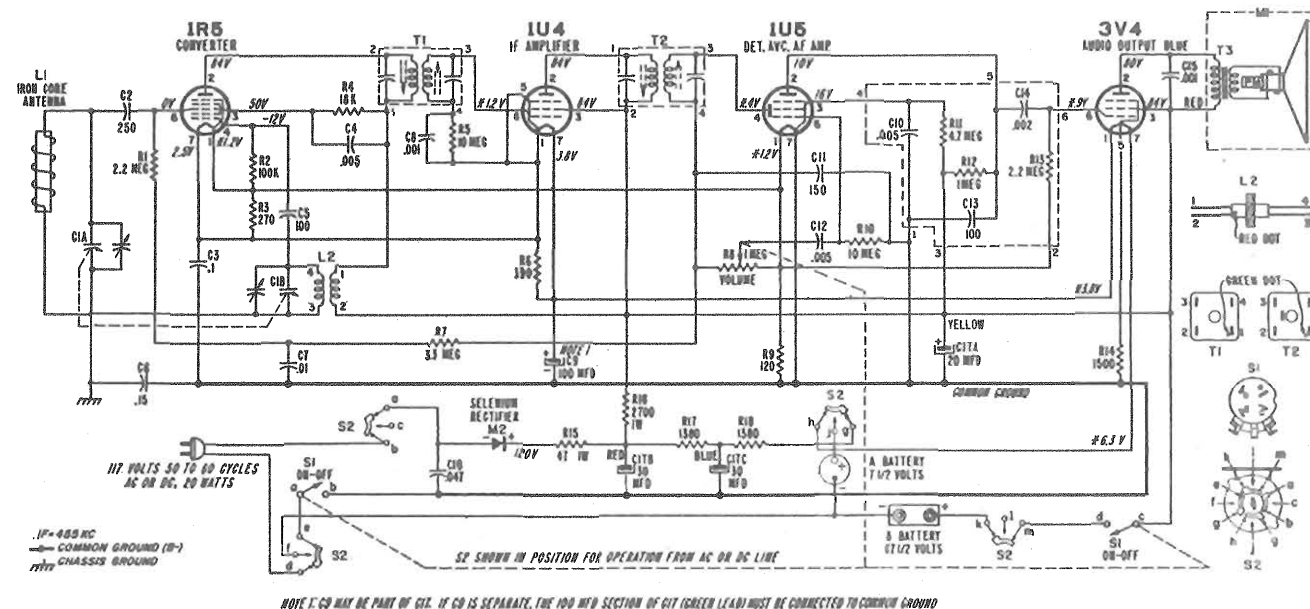
Schematic Diagram Courtesy of the Admiral Corp.

The PHOTOFAC Servicer

Set 378 - Vol. 38 ★ Published for all users of Howard W. Sams' Photofact Folders ★ Nov. 15, 1957

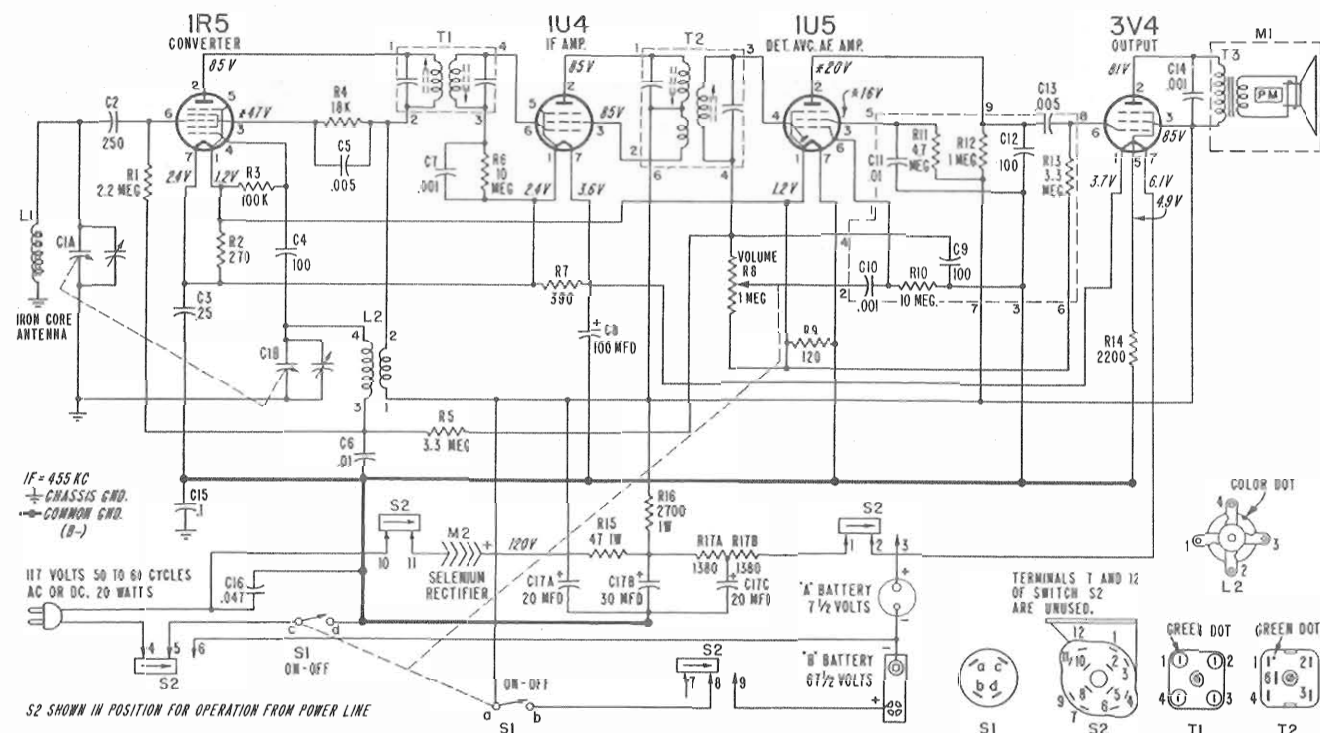
The service information in this Servicer provides data on models which we have been unable to present in PHOTOFAC Folders. The receivers are not in current production; a requirement for PHOTOFAC coverage, and we are therefore presenting schematics and supplementary data that will be of assistance when servicing these models.

Admiral Ch. 4B2 (Models 4B21, 22, 24, 28, 29)

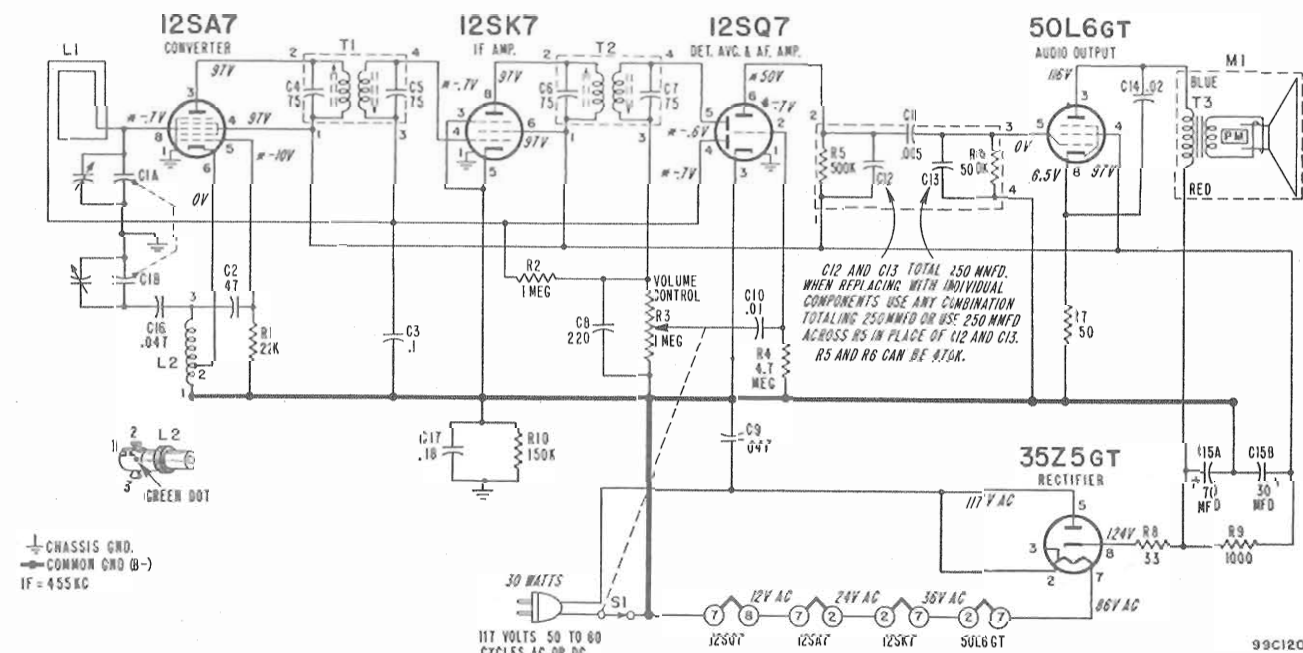


Schematic Diagram Courtesy of the Admiral Corp.

Admiral Ch. 4V1 (Models 4V14, 4V18, 4V19)

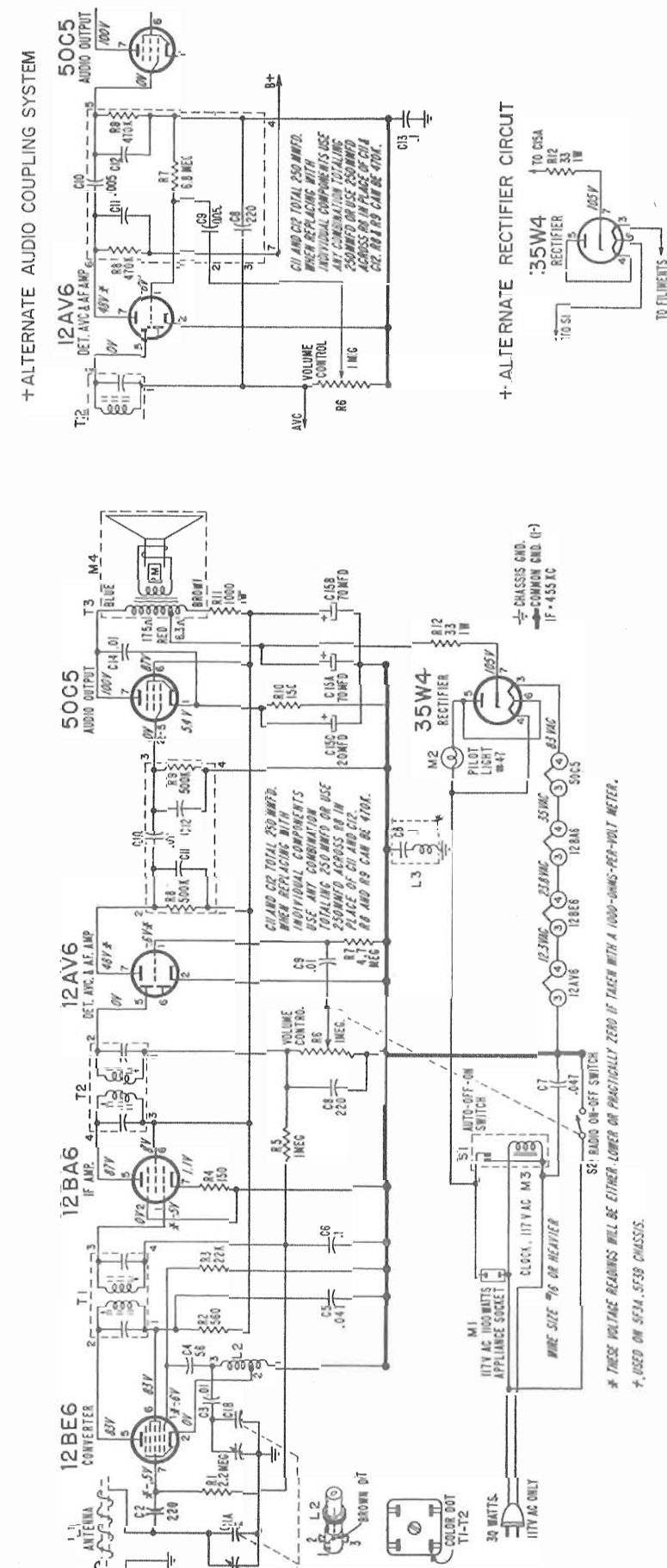


Schematic Diagram Courtesy of the Admiral Corp.



Admiral Ch. 5Z2 (Models 5Z22, 5Z23)

Admiral Ch. 5F3, A, B (Models 5F31, A, B, 5F32, A, B, 5F33, A, B, 5F34B, 5F38, A, B)



Schematic Diagram Courtesy of the Admiral Corp.