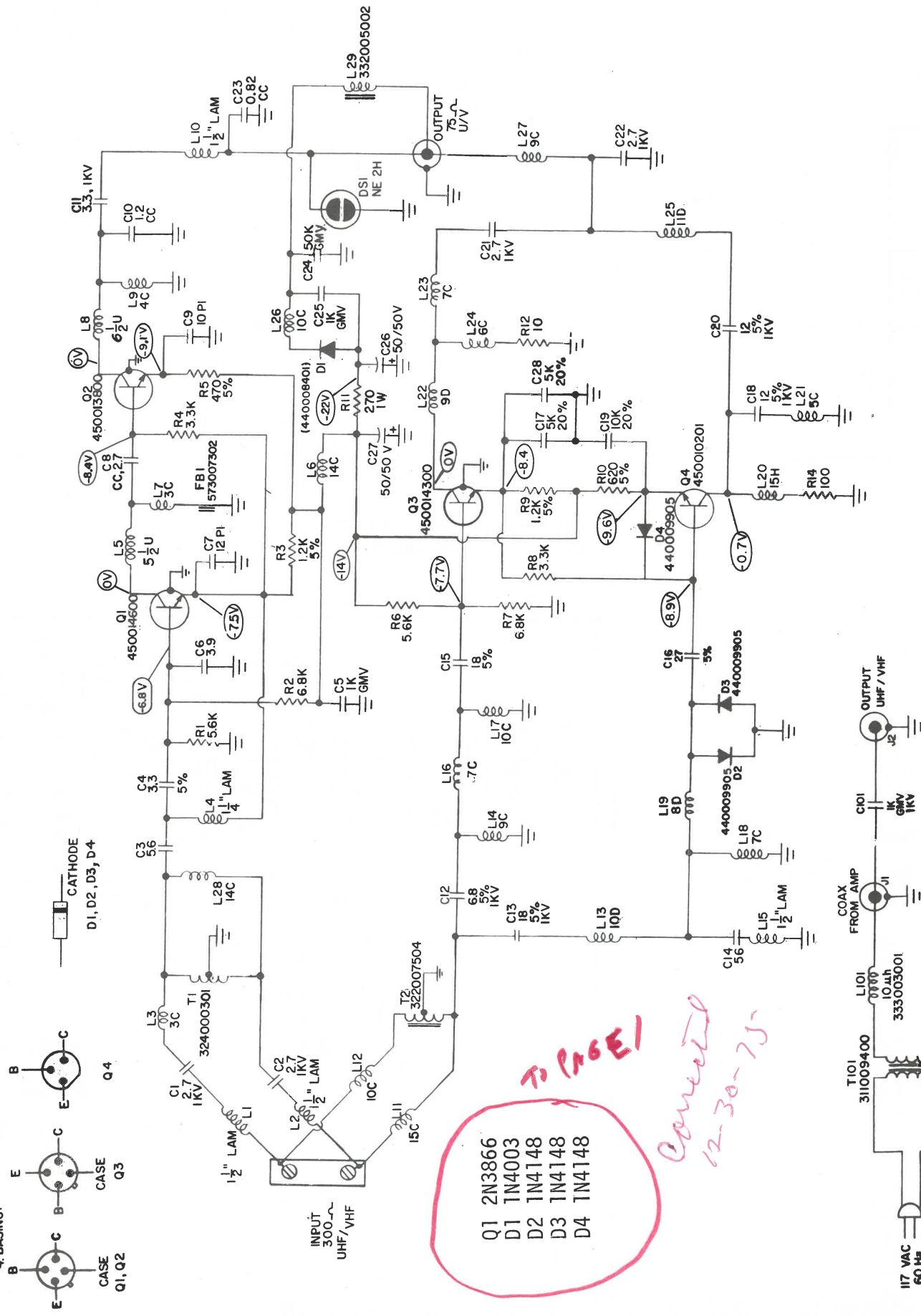
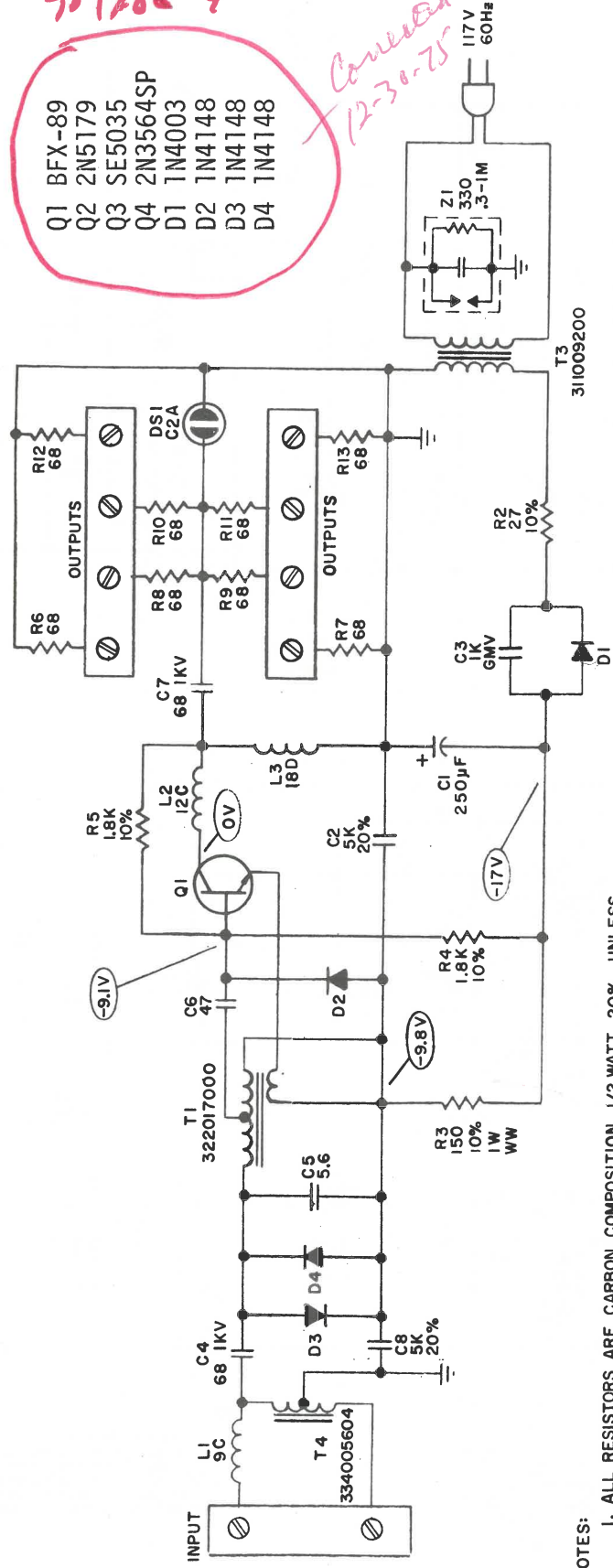


- NOTES:
- 1- ALL RESISTORS CARBON COMPOSITION, $\pm 10\%$, 1/4 W UNLESS NOTED
 - 2- ALL CAPACITORS CERAMIC, $\pm 10\%$, UNLESS NOTED (+ = ELECTROLYTIC)
 - 3- ALL VOLTAGES MEASURED TO REF. GROUND (CASE OF Q3)
 4. BASING:



Blonder-Tongue Model 1 Suburban 4542
VHF/UHF Amp

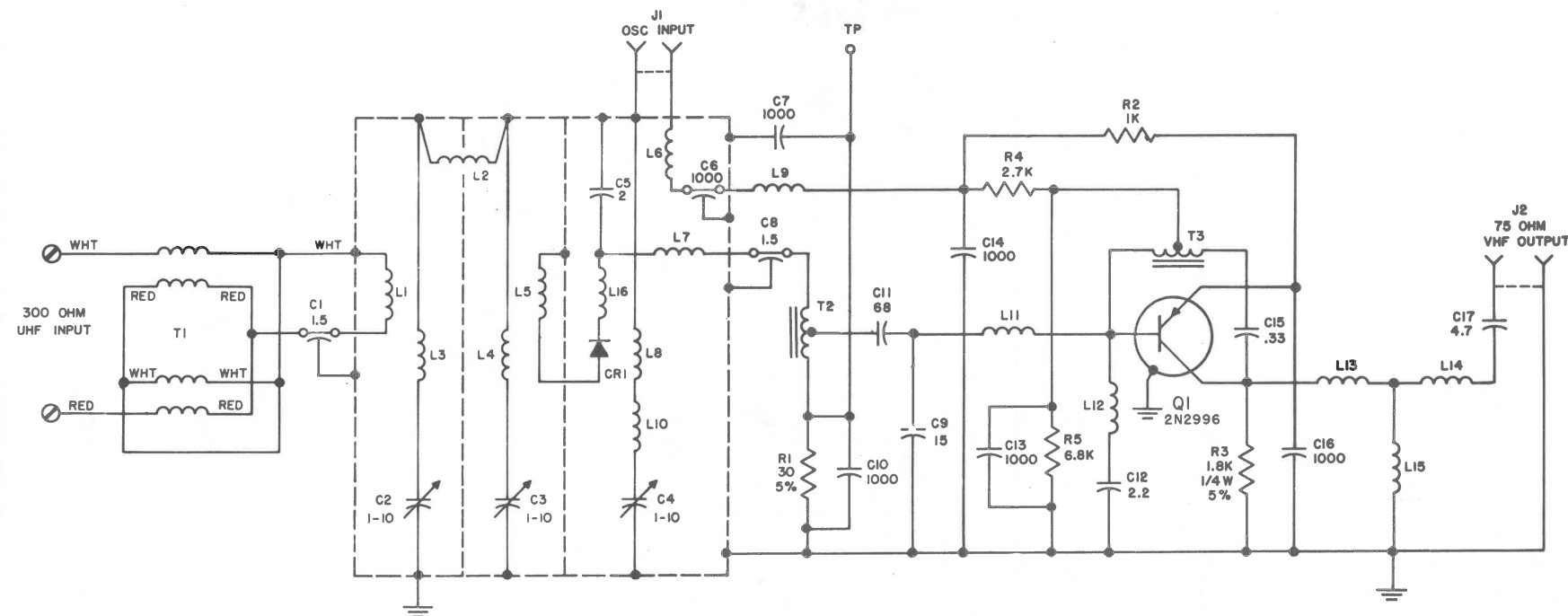
Courtesy of BLONDER-TONGUE LABS., INC.



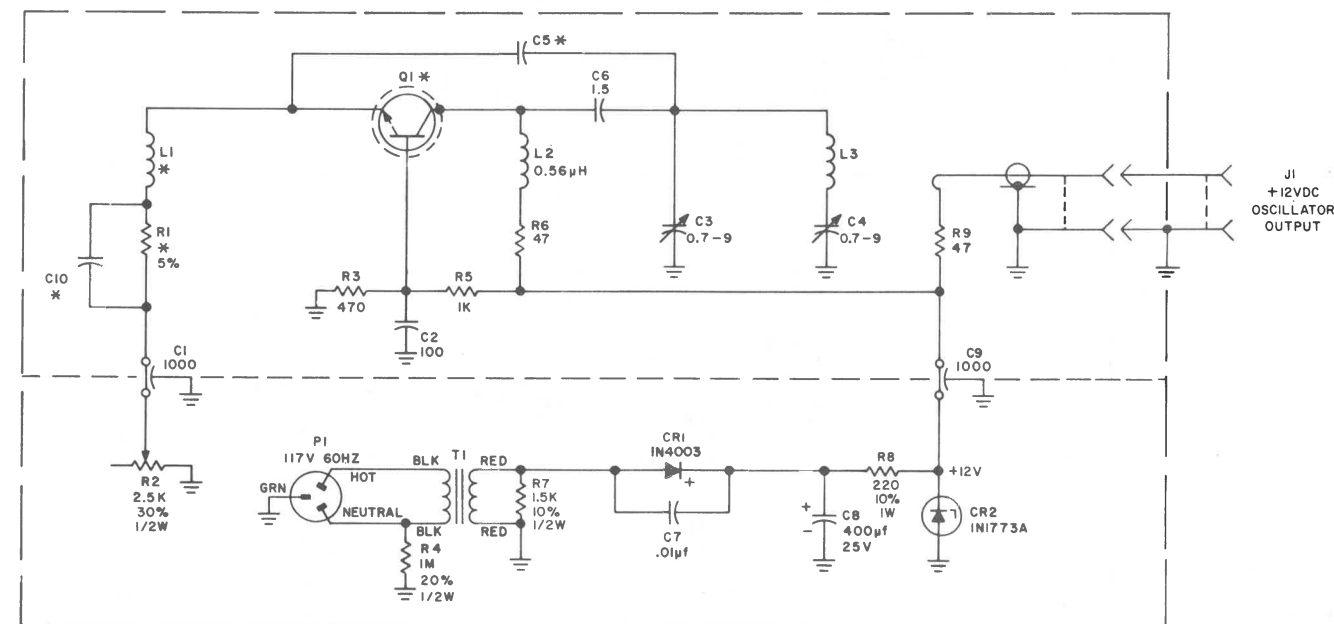
- NOTES:
1. ALL RESISTORS ARE CARBON COMPOSITION, 1/2 WATT, 20%, UNLESS OTHERWISE SPECIFIED, "K" DENOTES 1000.
 2. ALL CAPACITORS ARE CERAMIC DISC, RATED IN pF, 10%, UNLESS OTHERWISE SPECIFIED. "K" DENOTES 1000. "+" DENOTES ELECTROLYTIC.
 3. ALL VOLTAGES ARE MEASURED WITH A 20,000 OHM/VOLT VOM TO POSITIVE SIDE OF ELECTROLYTIC (CHASSIS GROUND)
 4. BASING:

Blonder-Tongue Model DA-4V (1435)
TV Distribution Amp

Courtesy of BLONDER-TONGUE LABS., INC.



Jerrold Model 454T
UHF Converter/Amp

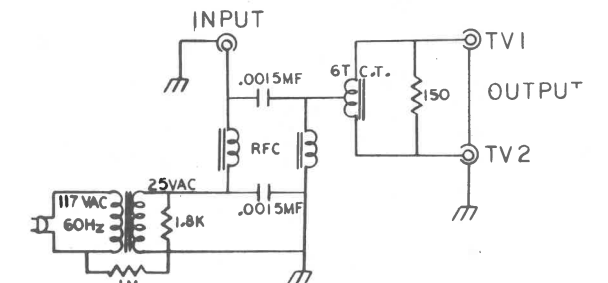
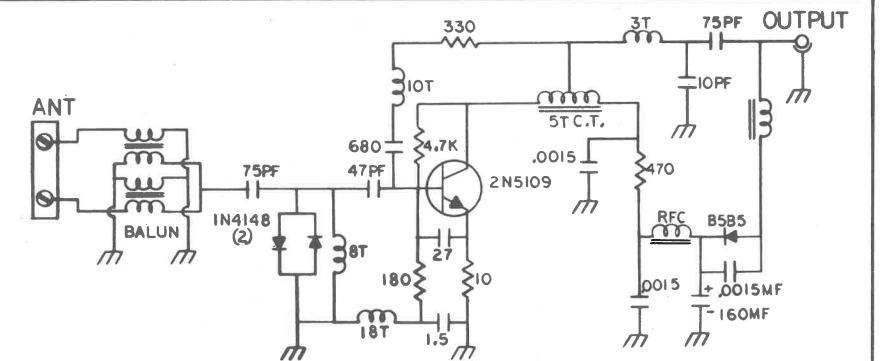


UNIT	PART DESCRIPTION				
	C5	R1	L1	Q1	C10
465 SS (LOW)	0.56 μ f	150	OMIT	130-230	3.3 pF
465 SS (MED)	0.27 μ f	150	OMIT	130-199	OMIT
465 SS (HIGH)	0.22 μ f	120	0.56 μ H	130-199	OMIT

NOTES:
1 UNLESS OTHERWISE SPECIFIED:
A. ALL CAPACITOR VALUES GIVEN IN PF
B. ALL RESISTORS IN OHMS, 10%, 1/4W
2. DC VOLTAGES ARE MEASURED TO GROUND
WITH 20,000 OHM/VOLT METER
3. * SEE TABULATION FOR COMPONENT VALUE

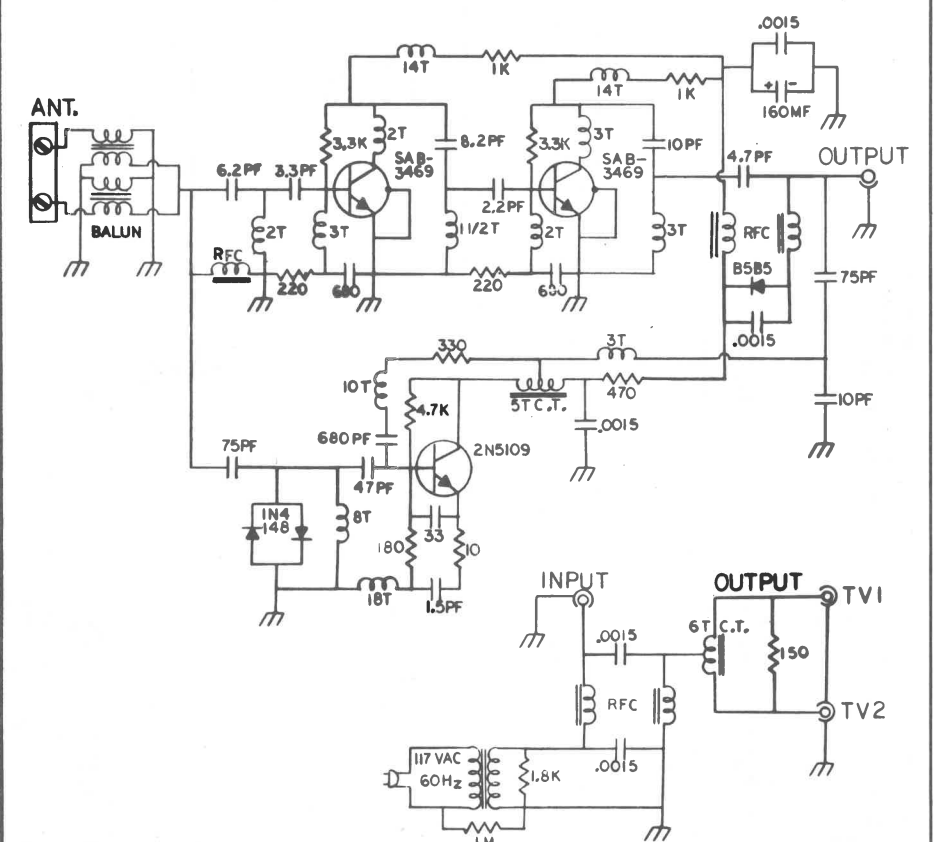
Jerrold Model 465SS
Oscillator/Power Supply

Courtesy of JERROLD ELECTRONICS CORP.



Kay-Townes Model AB-8000
VHF/FM Antenna-mounted Amp

Courtesy Of KAY-TOWNES, INC.



Kay-Townes Model AB-8200
VHF/UHF/FM Antenna-mounted Amp

Courtesy of KAY-TOWNES, INC.