

GRUNDIG MAJESTIC MODELS SO111US, SO112US,
SO121PX, SO121US, SO122US, SO142PX, SO142US

MODEL SO122US

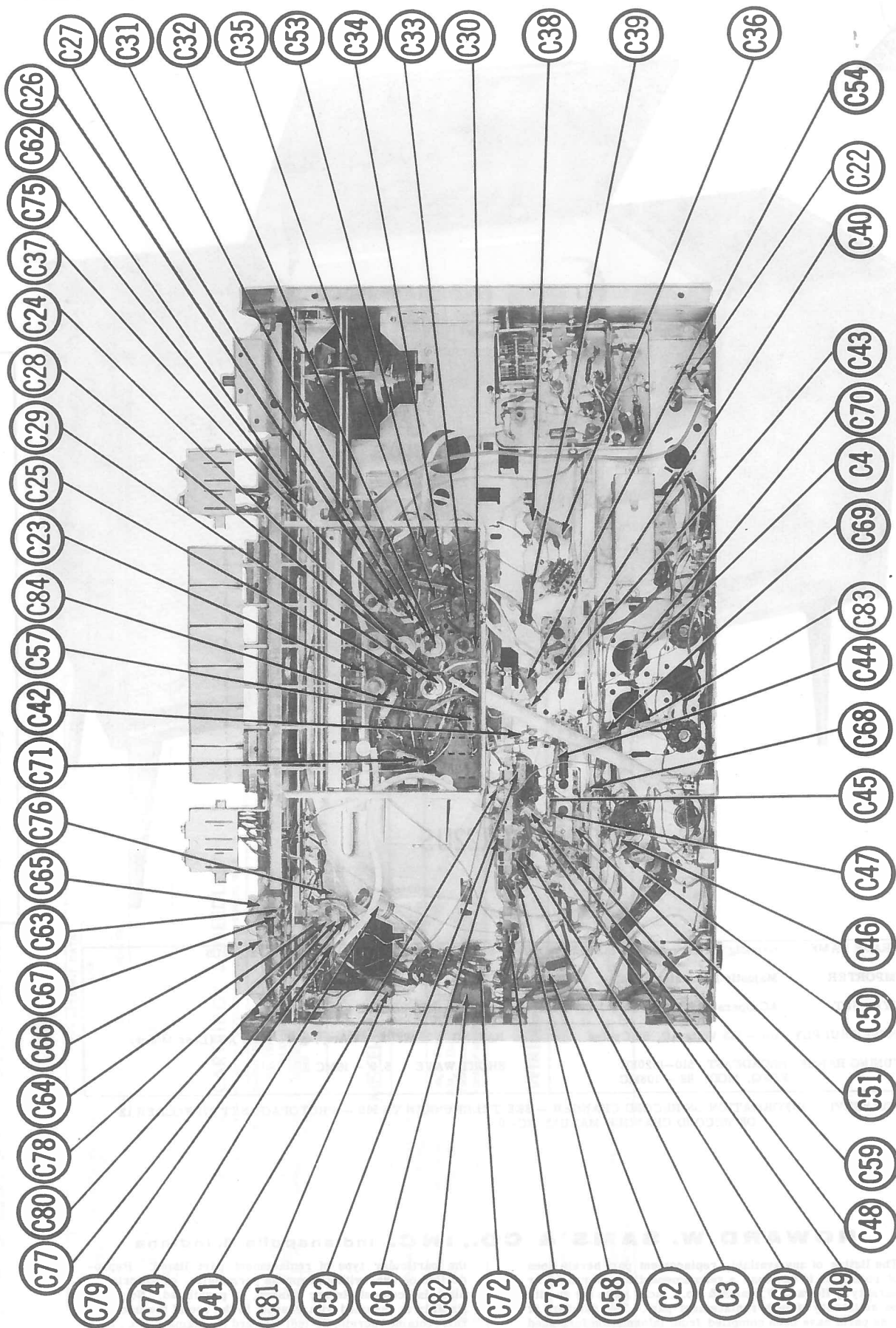
GRUNDIG MAJESTIC MODELS SO111US, SO112US,
SO121PX, SO121US, SO122US, SO142PX, SO142US

TRADE NAME	Grundig Majestic Models SO111US, SO112US, SO121PX, SO121US, SO122US, SO142PX, SO142US		
IMPORTER	Majestic International Sales, 743 N. LaSalle Street, Chicago 10, Illinois		
TYPE SET	AC Operated 9 Tube FM-BC-SW Receiver With 4 Speed Automatic Record Changer		
POWER SUPPLY	110 - 125 Volts AC, 60 Cycles	RATING	75 Watts, .7 Amp. @117 Volts AC (Less Motor)
TUNING RANGE	BROADCAST 510-1620KC FREQ. MOD. 88 - 108MC	SHORT WAVE	5.9 - 16MC

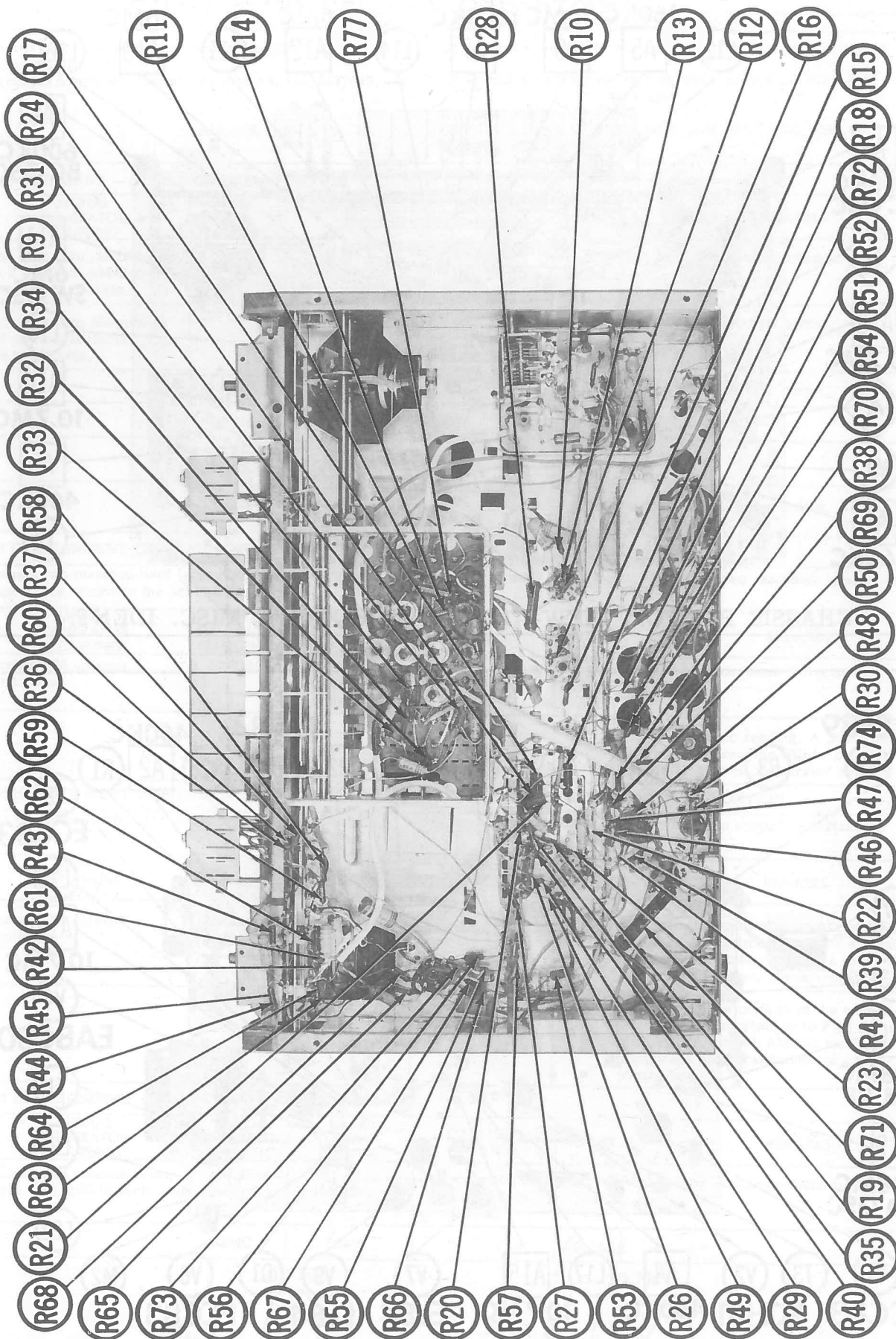
FOR SERVICE INFORMATION ON RECORD CHANGER - SEE TELEFUNKEN TW560 - PHOTOFACT SET 371 FOLDER 12
OR RECORD CHANGER MANUAL RC-10**HOWARD W. SAMS & CO., INC.** Indianapolis 6, Indiana

The listing of any available replacement part herein does not constitute in any case a recommendation, warranty or guaranty by Howard W. Sams & Co., Inc., as to the quality and suitability of such replacement part. The numbers of these parts have been compiled from information furnished to Howard W. Sams & Co., Inc., by the manufacturers of KN681

the particular type of replacement part listed. Reproduction or use, without express permission, of editorial or pictorial content, in any manner, is prohibited. No patent liability is assumed with respect to the use of the information contained herein. © 1961 Howard W. Sams & Co., Inc., Indianapolis 6, Indiana. Printed in U.S. of America

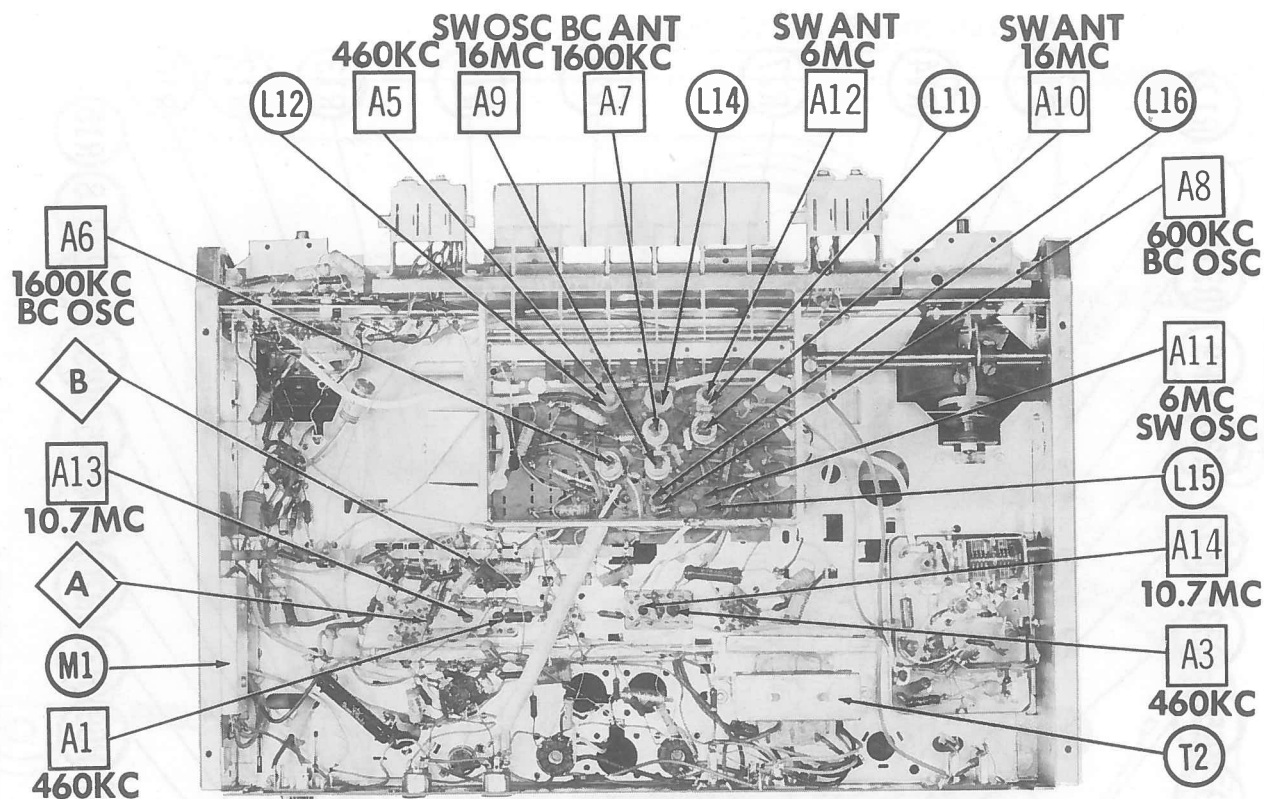


CHASSIS BOTTOM VIEW-CAPACITOR IDENT.

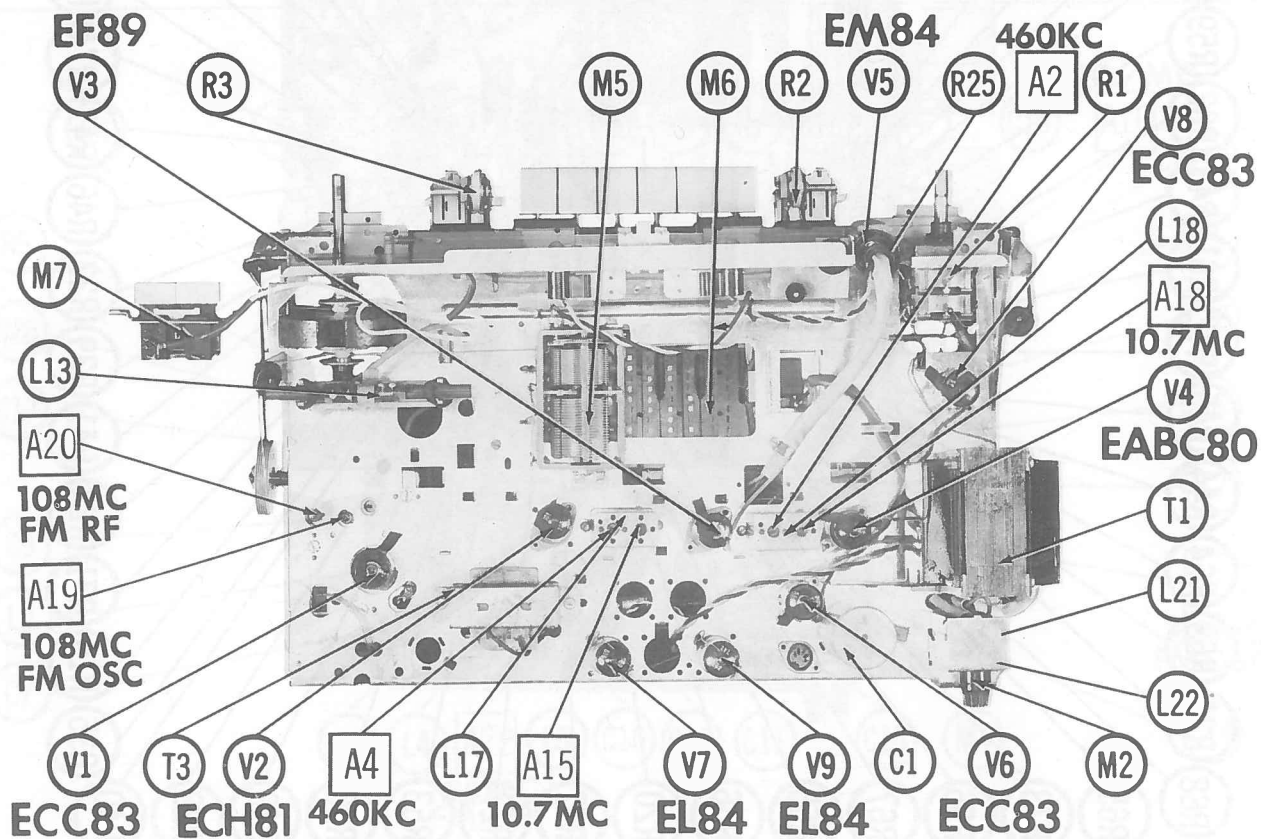


CHASSIS TOP VIEW MOLTLOB SISSCHC

GRUNDIG MAJESTIC MODELS SO111US, SO112US,
SO121PX, SO122US, SO142PX, SO142US



CHASSIS BOTTOM VIEW-ALIGN., INDUCTOR & MISC. IDENT.



CHASSIS-TOP VIEW

ALIGNMENT INSTRUCTIONS

ALIGNMENT INSTRUCTIONS—READ CAREFULLY BEFORE ATTEMPTING ALIGNMENT

Volume control should be at maximum position. Output of signal generator should be no higher than necessary to obtain an output reading.

Suggested Alignment Tools: A1 thru A4, A13, A14, A15, A17... GENERAL CEMENT #5009, 8195, 8274, 8275, 8278, 8729, 8987, 8988, 8989

WALSCO #2515, 2531, 2532

A18, A19..... GENERAL CEMENT #5000, 5003, 5066, 8276, 8290, 9087, 9089
WALSCO #2512, 2525, 2528

AM ALIGNMENT — SELECTOR IN AM POSITION

	SIGNAL GENERATOR COUPLING	SIGNAL GENERATOR FREQUENCY	RADIO DIAL SETTING	OUTPUT METER	ADJUST	REMARKS
1.	High side thru .1mfd to pin 2 (grid) of AM Converter. Low side to chassis.	460KC (400% 30% AM)	(AM) Tuning gang fully open.	Across voice coil.	A1, A2, A3, A4	Adjust for maximum output.
2.	High side thru 200mmf to AM antenna terminal. Low side to chassis.	"	"	"	A5	Adjust for MINIMUM output.
3.	"	1600KC	1600KC	"	A6, A7	Adjust for maximum output.
4.	"	600KC	600KC	"	A8	"
5.	"	16MC	(SW) 16MC	"	A9, A10	"
6.	"	6MC	6MC	"	A11, A12	Adjust for maximum output. Repeat Steps 2 thru 6.

FM IF ALIGNMENT USING AM SIGNAL GENERATOR AND VTVM — SELECTOR IN FM POSITION

Connect two matched 100K (+1%) resistors in series from point Δ to chassis. The junction of these two resistors is alignment point \diamond as shown on the schematic.

	SIGNAL GENERATOR COUPLING	SIGNAL GENERATOR FREQUENCY	RADIO DIAL SETTING	CONNECT VTVM	ADJUST	REMARKS
7.	Across FM antenna terminals.	10.7MC	(FM) Point of non-interference.	DC probe to point Δ . Common to chassis.	A13, A14, A15, A16, A17	Adjust for maximum deflection.
8.	"	"	"	DC probe to point \diamond . Common to point \diamond .	A18	Adjust for zero reading. A positive and negative reading will be obtained on either side of the correct setting.

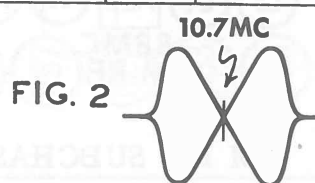
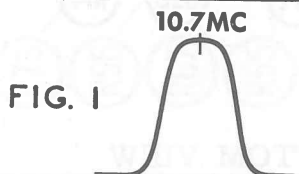
FM IF ALIGNMENT USING FM SIGNAL GENERATOR AND OSCILLOSCOPE — SELECTOR IN FM POSITION

Use frequency modulated signal with 60% modulation and 450KC sweep. Use 120V sawtooth voltage in scope for horizontal deflection.

	SIGNAL GENERATOR COUPLING	SIGNAL GENERATOR FREQUENCY	RADIO DIAL SETTING	CONNECT SCOPE	ADJUST	REMARKS
7.	Across FM antenna terminals.	10.7MC (450KC Swp)	(FM) Point of non-interference.	Vert. amp. to point Δ . Low side to chassis.	A13, A14, A15, A16, A17	Disconnect stabilizing capacitor C3. Adjust for maximum gain and symmetry of response similar to Fig. 1 with markers as shown. Reconnect C3.
8.	"	"	"	Vert. amp. to point \diamond . Low side to chassis.	A18	Adjust to place marker at the center of crossover lines similar to Fig. 2. SLIGHTLY retouch A13 for maximum amplitude and straightness of crossover lines.

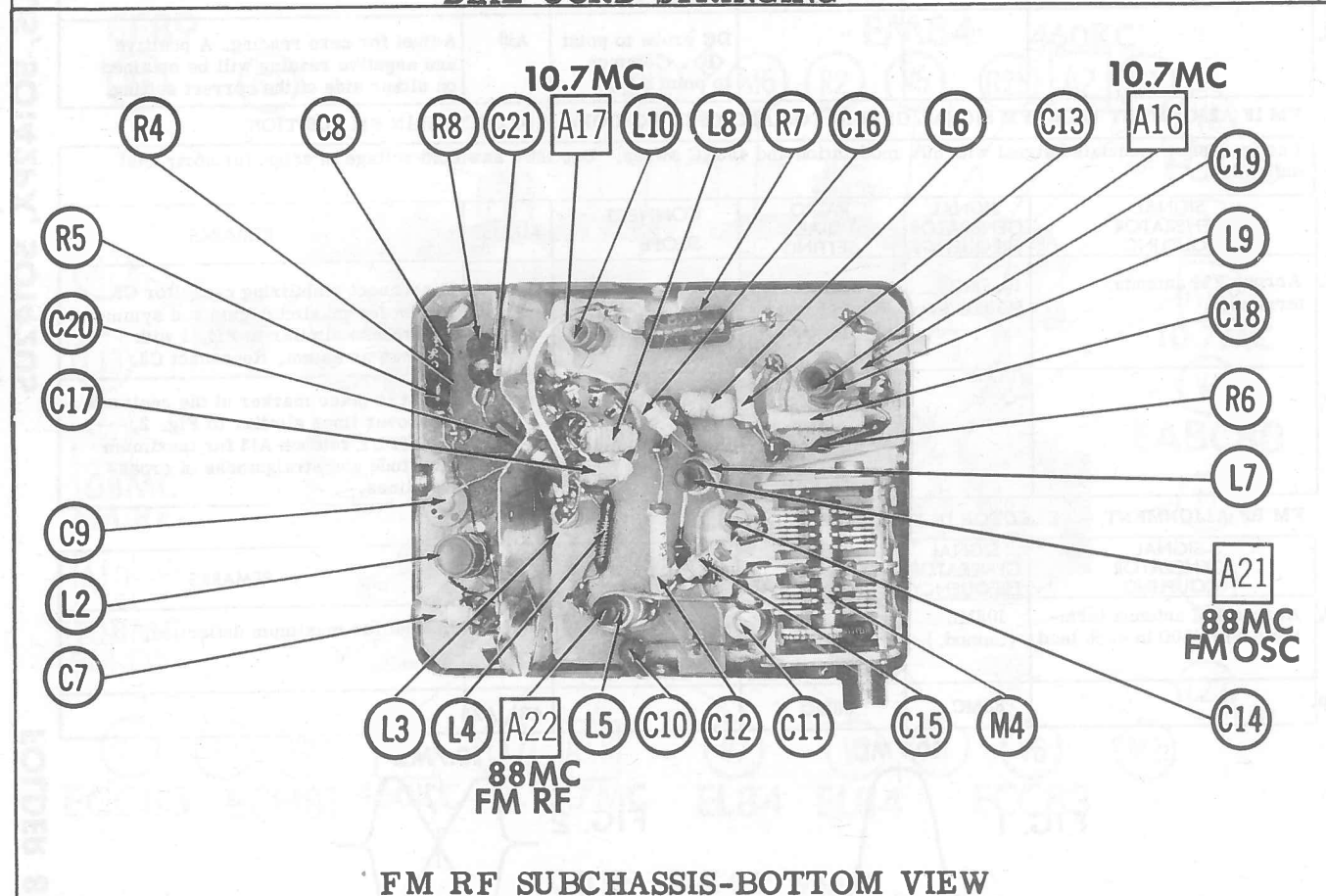
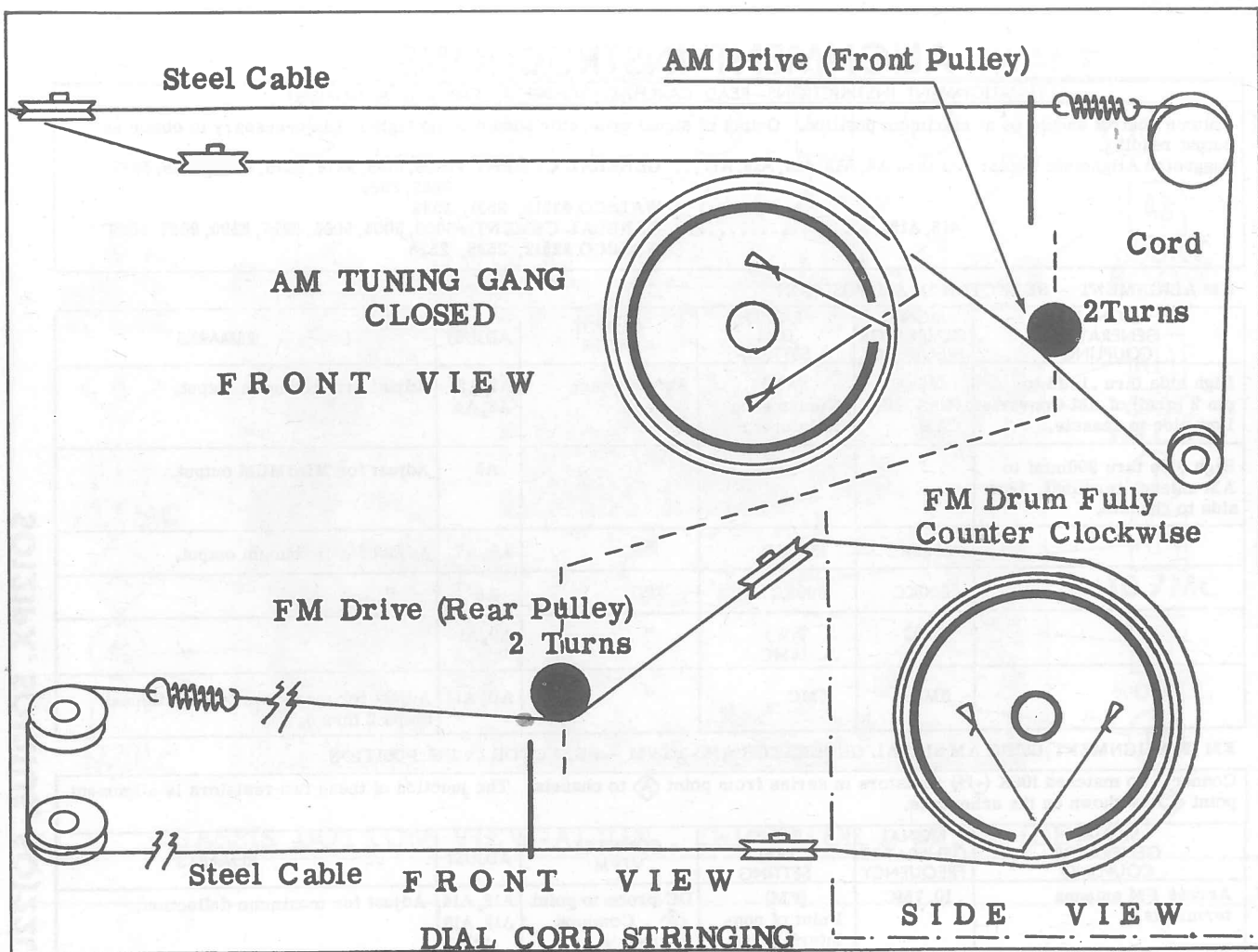
FM RF ALIGNMENT — SELECTOR IN FM POSITION

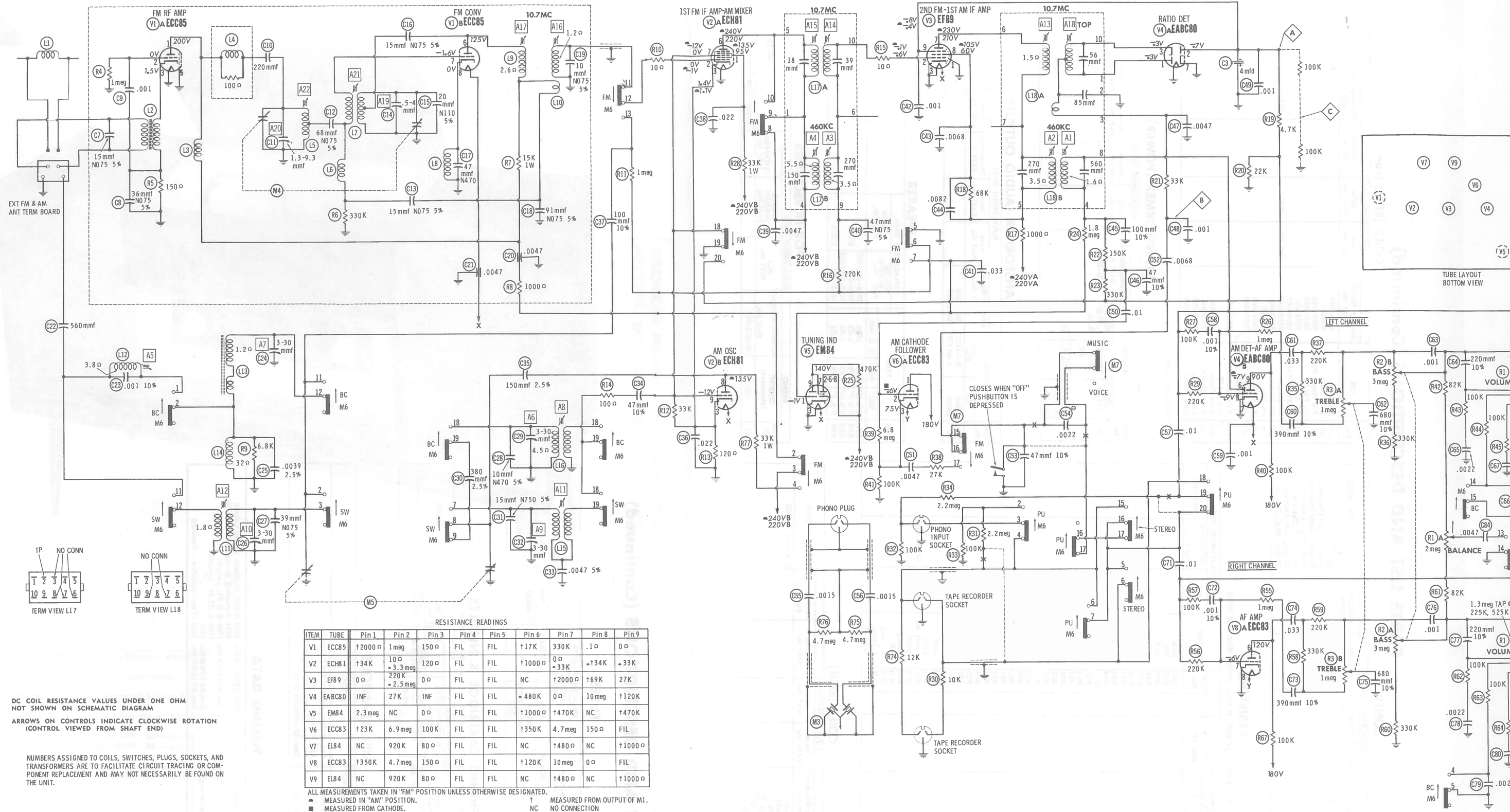
	SIGNAL GENERATOR COUPLING	SIGNAL GENERATOR FREQUENCY	RADIO DIAL SETTING	CONNECT VTVM	ADJUST	REMARKS
9.	Across FM antenna terminals with 150 Ω in each lead.	108MC (Unmod.)	(FM) 108MC	DC probe to point Δ . Common to chassis.	A19, A20	Adjust for maximum deflection.
10.	"	88MC	88MC	"	A24, A22	"



GRUNDIG MAJESTIC MODELS SO112US, SO112US,
SO121PX, SO121US, SO122US, SO142PX, SO142US

FOLDER 8



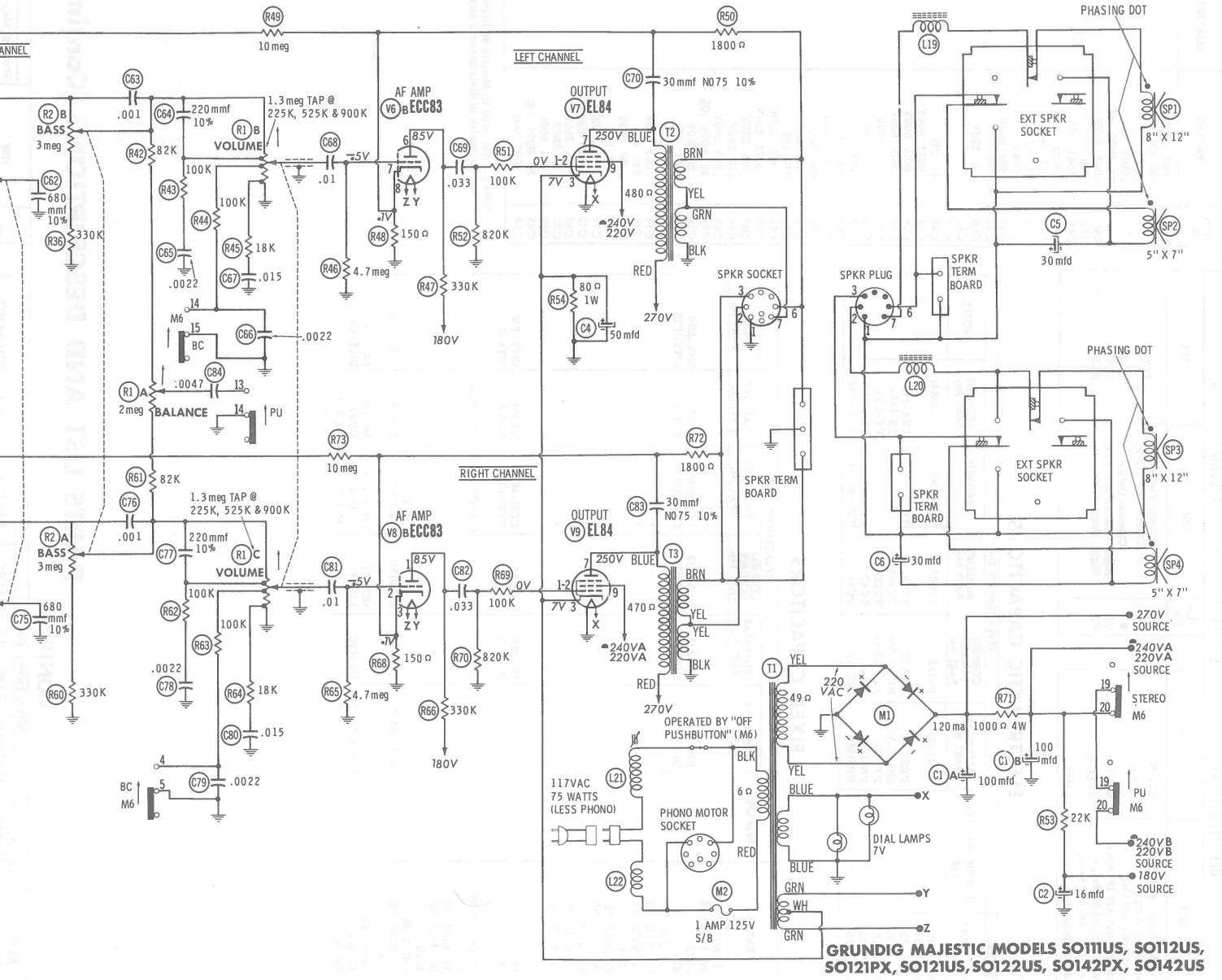
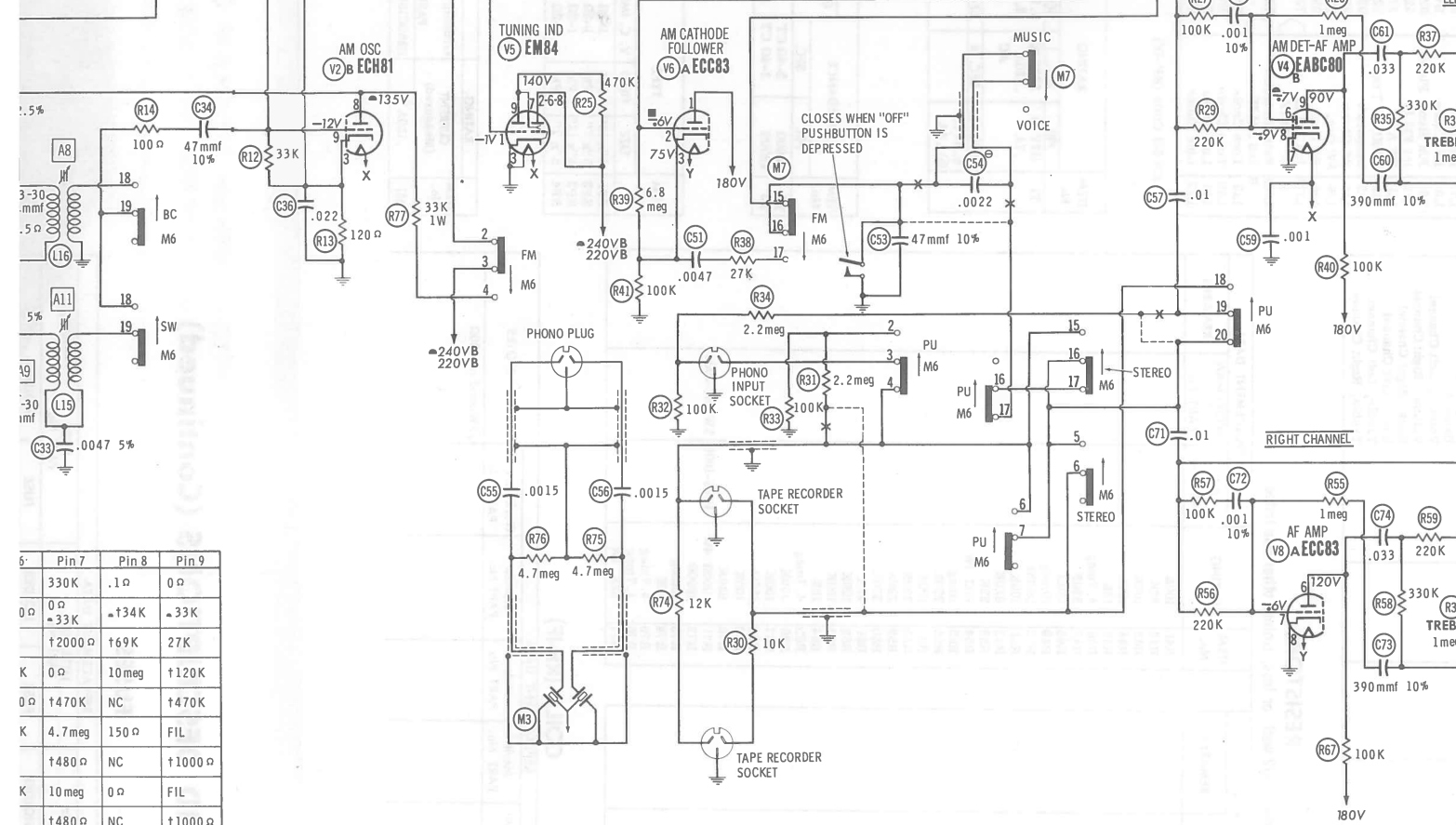
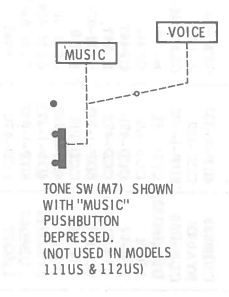
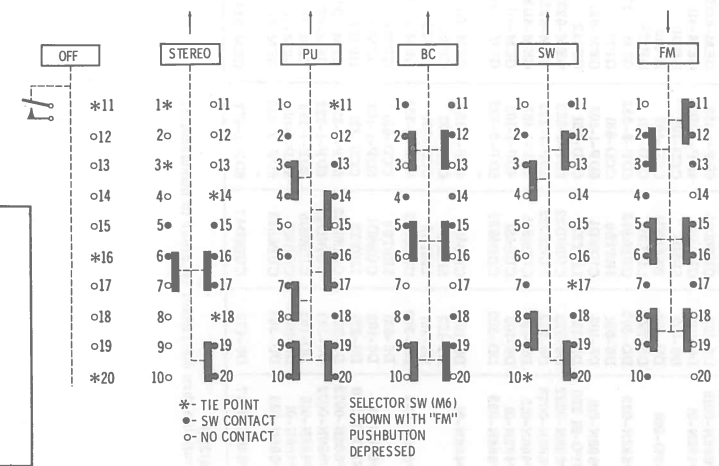
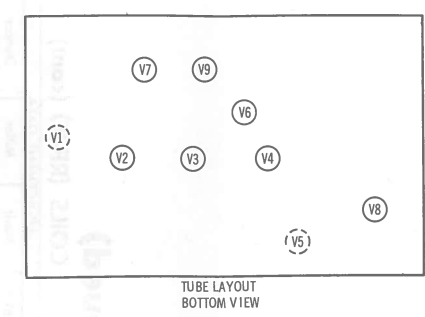
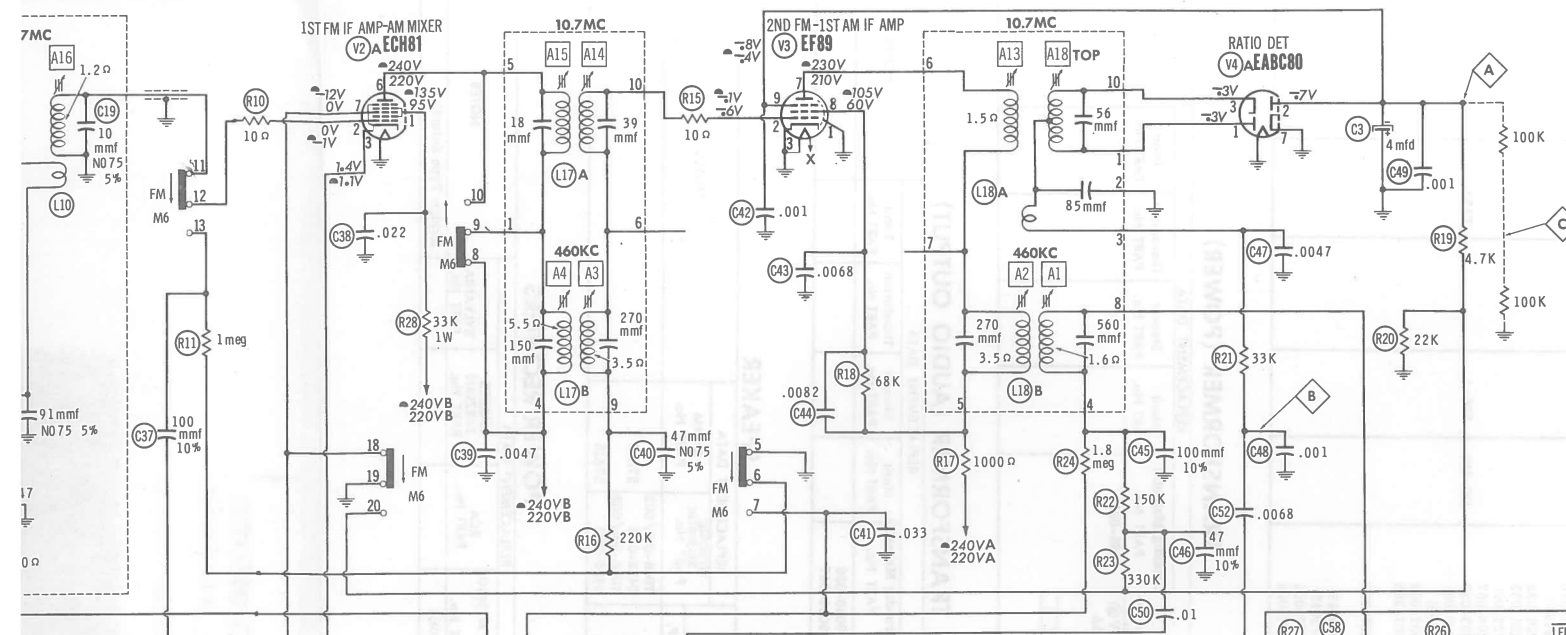


DC COIL RESISTANCE VALUES UNDER ONE OHM NOT SHOWN ON SCHEMATIC DIAGRAM
 ARROWS ON CONTROLS INDICATE CLOCKWISE ROTATION (CONTROL VIEWED FROM SHAFT END)

NUMBERS ASSIGNED TO COILS, SWITCHES, PLUGS, SOCKETS, AND TRANSFORMERS ARE TO FACILITATE CIRCUIT TRACING OR COMPONENT REPLACEMENT AND MAY NOT NECESSARILY BE FOUND ON THE UNIT.

- DC voltage measurements taken with vacuum tube voltmeter; AC voltages measured with 1000 ohm per volt voltmeter.
- Socket connections are shown as bottom views.
- Measured values are from socket pin to common ground.
- Line voltage maintained at 117 volts for voltage readings.
- Nominal tolerance on component values makes possible a variation of ±15% in voltage and resistance readings.
- Volume control at maximum, no signal applied for voltage measurements.

A PHOTOFAC STANDARD NOTATION SCHEMATIC
 ©Howard W. Sams & Co., Inc. 1961



5	Pin 7	Pin 8	Pin 9
330K	.1	0	0
0	0	+34K	+33K
0	+2000	+69K	27K
K	0	10 meg	+120K
0	+470K	NC	+470K
K	4.7 meg	150	FIL
0	+480	NC	+1000
K	10 meg	0	FIL
0	+480	NC	+1000

ED. MEASURED FROM OUTPUT OF M1. NO CONNECTION

PARTS LIST AND DESCRIPTIONS

TUBES

GENERAL ELECTRIC					RAYTHEON		SYLVANIA			
ITEM No.	USE	TYPE	ITEM No.	USE	TYPE					
V1	FM RF Amp.-FM Conv.	ECC85	V6	AM Cathode Follower-Left Channel AF Amp.	ECC83					
V2	1st FM IF Amp.-AM Mixer AM Osc.	ECH81	V7	Left Channel Output	EL84					
V3	2nd FM-1st AM IF Amp.	EF 89	V8	Right Channel Output	ECC83					
V4	Ratio Det.-AM Del.-Left Channel AF Amp.	EABC80	V9	Right Channel Output	EL84					
V5	Tuning Indicator	EM64								

ELECTROLYTIC CAPACITORS

REPLACEMENT DATA					
ITEM No.	RATING	AEROVOX PART No.	CORNELL-DUBILIER PART No.	MALLORY PART No.	SPRAGUE PART No.
C1A	100 350	AFT2-41-50	B0332	FP227. 7	TVL-2641
C2	100 350	PR81640	BR1635	TC64	TVA-1607
C3	16 350	SRE150V5	NLW6-100	TTX024	TE-1403
C4	4 70	PTT59	NLW50-15	TTX550	TE-1133
C5	50 12	PR81460	BR3015	TC47	TVA-1412
C6	30 35	PR81460	BR3015	TC47	TVA-1412

FIXED CAPACITORS

REPLACEMENT DATA					
ITEM No.	RATING	REMARKS	AEROVOX PART No.	CORNELL-DUBILIER PART No.	ELMUNCO PART No.
C7	15 N075 5%		BPD-002	BYA10D2	*
C8	36 N075 5%		DI-220	LI0722	CCD-202
C9	220				CCD-221
C10	1.3-3.3				*
C11	68 N075 5%				*
C12	15 N075 5%				*
C13	5-4				*
C14	20 N110 5%				*
C15	15 N075 5%				*
C16	47 N470				*
C17	91 N075 5%				*
C18	10 N075 5%				*
C19	10 N075 5%				*
C20	10 N075 5%				*
C21	10 N075 5%				*
C22	10 N075 5%				*
C23	10 N075 5%				*
C24	10 N075 5%				*
C25	10 N075 5%				*
C26	10 N075 5%				*
C27	10 N075 5%				*
C28	10 N075 5%				*
C29	10 N075 5%				*
C30	10 N075 5%				*
C31	10 N075 5%				*
C32	10 N075 5%				*
C33	10 N075 5%				*
C34	10 N075 5%				*
C35	10 N075 5%				*

Note 1. Not used in Models SOLIUS & SOLIUS
* Not normally in distributor's stock. Available thru distributor on order to manufacturer.

FIXED CAPACITORS (cont)

REPLACEMENT DATA				
ITEM No.	RATING	REMARKS	AEROVOX PART No.	CORNELL-DUBILIER PART No.
C36	.022 250V		P488N-022	CUB4522
C37	100 10%		NPO-SI 100	LI071
C38	.022 500V		P688N-022	CUB6522
C39	.0047 500V		P688N-0047	CUB6D47
C40	47 N075 5%			*
C41	.033 250V		P488N-033	CUB6S33
C42	.001		BPD-001	BYA10D1
C43	.0068 500V		P688N-0068	D6-822
C44	.0082		NPO-SI 100	LI0Q47
C45	100 10%		SI 4700	BYA10D1
C46	47 10%		D6-472	CUB6D1
C47	.0047		P688N-001	D6-472
C48	.001 500V		BPD-001	BYA10D1
C49	.001 250V		P688N-001	D6-472
C50	.0047 500V		P688N-0047	CUB6D1
C51	.0068 500V		P688N-0068	D6-822
C52	.0022 500V		NPO-SI 47	LI0Q47
C53	.0022 500V		P688N-0022	CUB6D22
C54	.0015 500V		P688N-0015	CUB6D15
C55	.0015 500V		P488N-015	CUB4S1
C56	.0015 500V		P488N-01	D6-102
C57	.001 250V		P688N-033	D6-102
C58	.033 500V		P488N-01	D6-102
C59	30 N075 10%		BPD-001	BYA10D1
C60	.01 250V		P688N-033	D6-102
C61	.001 10%		P688N-001	D6-102
C62	.001 10%		P688N-001	D6-102
C63	.001 10%		P688N-001	D6-102
C64	.001 10%		P688N-001	D6-102
C65	.0022 500V		P688N-0022	CUB6D22
C66	.0022 500V		P688N-0022	CUB6D22
C67	.0022 500V		P688N-0022	CUB6D22
C68	.0022 500V		P688N-0022	CUB6D22
C69	.0022 500V		P688N-0022	CUB6D22
C70	.0022 500V		P688N-0022	CUB6D22
C71	.0022 500V		P688N-0022	CUB6D22
C72	.0022 500V		P688N-0022	CUB6D22
C73	.0022 500V		P688N-0022	CUB6D22
C74	.0022 500V		P688N-0022	CUB6D22
C75	.0022 500V		P688N-0022	CUB6D22
C76	.0022 500V		P688N-0022	CUB6D22
C77	.0022 500V		P688N-0022	CUB6D22
C78	.0022 500V		P688N-0022	CUB6D22
C79	.0022 500V		P688N-0022	CUB6D22
C80	.0022 500V		P688N-0022	CUB6D22
C81	.0022 500V		P688N-0022	CUB6D22
C82	.0022 500V		P688N-0022	CUB6D22
C83	.0022 500V		P688N-0022	CUB6D22
C84	.0022 500V		P688N-0022	CUB6D22

PARTS LIST AND DESCRIPTIONS (Continued)

CONTROLS

REPLACEMENT DATA				
ITEM No.	RATING	REMARKS	WATTS	INSTALLATION NOTES
R1A	2meg		7800-226	Balance Volume, Left Channel
R1B	1.3meg*			Volume, Right Channel
R1C	1.3meg*			Bas, Right Channel
R2A	3meg		7806-235	Bas, Left Channel
R3A	1meg		7806-234	Treble, Left Channel
R3B	1meg			Treble, Right Channel

* Taps @ 275K, 525K, 900K.

RESISTORS

All wattages 1/2 watt, or less, unless otherwise listed.

REPLACEMENT DATA				
ITEM No.	RATING	REMARKS	RATING	REMARKS
R4	1meg		100K	
R5	150K		82K	
R6	330K		100K	
R7	15K 1W		100K	
R8	1000K		18K	
R9	6800K		4.7meg	
R10	10K		330K	
R11	1meg		150K	
R12	33K		10meg	
R13	120K		100K	
R14	100K		180K	
R15	10K		820K	
R16	220K		22K	
R17	1000K		68K 1W	
R18	68K		1meg	
R19	4700K		220K	
R20	22K		100K	
R21	33K		330K	
R22	150K		82K	
R23	330K		100K	
R24	1.8meg		100K	
R25	470K		100K	
R26	1meg		100K	
R27	100K		100K	
R28	33K 1W		100K	
R29	220K		100K	
R30	10K		100K	
R31	2.2meg		100K	
R32	100K		100K	
R33	100K		100K	
R34	2.2meg		100K	
R35	330K		100K	
R36	330K		100K	
R37	220K		100K	
R38	27K		100K	
R39	6.8meg		100K	
R40	100K		100K	

COILS (RF-IF)

REPLACEMENT DATA				
ITEM No.	USE	REMARKS	REMARKS	NOTES
L1	FM Ant. Matching	9238-068		
L2	FM Ant.	9231-027		
L3	RF Choke	BV1975		
L4	RF Choke	BV1966		
L5	FM RF	9226-037		
L6	RF Choke	BV1976		

PARTS LIST AND DESCRIPTIONS (Continued)

FUSES

REPLACEMENT DATA				
ITEM No.	TYPE	RATING	REMARKS	NOTES
F1	BUSS			
F2	BUSS			
F3	BUSS			
F4	BUSS			
F5	BUSS			
F6	BUSS			
F7	BUSS			
F8	BUSS			
F9	BUSS			
F10	BUSS			
F11	BUSS			
F12	BUSS			
F13	BUSS			
F14	BUSS			
F15	BUSS			
F16	BUSS			
F17	BUSS			
F18	BUSS			
F19	BUSS			
F20	BUSS			
F21	BUSS			
F22	BUSS			
F23	BUSS			
F24	BUSS			
F25	BUSS			
F26	BUSS			
F27	BUSS			
F28	BUSS			
F29	BUSS			
F30	BUSS			
F31	BUSS			
F32	BUSS			
F33	BUSS			
F34	BUSS			
F35	BUSS			
F36	BUSS			
F37	BUSS			
F38	BUSS			
F39	BUSS			
F40	BUSS			
F41	BUSS			
F42	BUSS			
F43	BUSS			
F44	BUSS			
F45	BUSS			
F46	BUSS			
F47	BUSS			
F48	BUSS			
F49	BUSS			
F50	BUSS			
F51	BUSS			
F52	BUSS			
F53	BUSS			
F54	BUSS			
F55	BUSS			
F56	BUSS			
F57	BUSS			
F58	BUSS			
F59	BUSS			
F60	BUSS			
F61	BUSS			
F62	BUSS			
F63	BUSS			
F64	BUSS			
F65	BUSS			
F66	BUSS			
F67	BUSS			
F68	BUSS			
F69	BUSS			
F70	BUSS			
F71	BUSS			
F72	BUSS			
F73	BUSS			
F74	BUSS			
F75	BUSS			
F76	BUSS			
F77	BUSS			
F78	BUSS			
F79	BUSS			
F80	BUSS			
F81	BUSS			
F82	BUSS			
F83	BUSS			
F84	BUSS			
F85	BUSS			
F86	BUSS			
F87	BUSS			
F88	BUSS			
F89	BUSS			
F90	BUSS			
F91	BUSS			
F92	BUSS			
F93	BUSS			
F94	BUSS			
F95	BUSS			
F96	BUSS			
F97	BUSS			
F98	BUSS			
F99	BUSS			
F100	BUSS			

COILS (RF-IF) (cont)

REPLACEMENT DATA				
ITEM No.	USE	REMARKS	REMARKS	NOTES
L7	FM Osc.	9228-038		
L8	RF Choke	BV1960		
L9	FM Mixer Plate	9228-032		
L10	1st FM IF	9228-033		
L11	SW Ant.	9239-001		
L12	460KC IF Trap	9208-057		
L13	Loopstick	9239-020		
L14	RF Choke	9208-001		
L15	SW Osc.	BV1881		
L16	BC Osc.	9232-002		
L17A	2nd FM IF	7207-308		
L17B	1st AM IF	7207-308		
L18A	Ratio Detector	7207-328		
L19	Tone Choke	BV2048		
L20	Tone Choke	BV2048		
L21	Line Choke	2227-004		
L22	Line Choke	9227-005		

KCN 681 Coils (RF-IF)

TRANSFORMER (POWER)

REPLACEMENT DATA				
ITEM No.	RATING	REMARKS	REMARKS	NOTES
T1	SEC. 1 220V @ 7A	SEC. 2 6.3V @ 3.5A	SEC. 3 6.3V @ 3.5A	
T2	SEC. 1 220V @ 7A	SEC. 2 6.3V @ 3.5A	SEC. 3 6.3V @ 3.5A	
T3	SEC. 1 220V @ 7A	SEC. 2 6.3V @ 3.5A	SEC. 3 6.3V @ 3.5A	

TRANSFORMER (AUDIO OUTPUT)

</

PARTS LIST AND DESCRIPTIONS (Continued)

CONTROLS

ITEM No.	RATING RESISTANCE	REPLACEMENT DATA				INSTALLATION NOTES
		Grundig Majestic PART No.	CENTRALAB PART No.	CLAROSTAT PART No.	CTS-IRC PART No.	MALLORY PART No.
R1A	2meg	7801-226				Balance
R1B	1.3meg*					Volume, Left Channel
R1C	1.3meg*					Volume, Right Channel
R2A	3meg	7806-235				Bass, Right Channel
R2B	3meg					Bass, Left Channel
R3A	1meg	7806-234				Treble, Left Channel
R3B	1meg					Treble, Right Channel

* Taps @ 275K, 525K, 900K.

RESISTORS

All wattages 1/2 watt, or less, unless otherwise listed.

ITEM No.	RATING	REPLACEMENT DATA		ITEM No.	RATING	REPLACEMENT DATA		REMARKS
		IRC PART No.	WORKMAN TV PART No.			IRC PART No.	WORKMAN TV PART No.	
R4	1meg			R41	100K			
R5	150Ω			R42	82K			
R6	330K			R43	100K			
R7	15K 1W			R44	100K			
R8	1000Ω			R45	18K			
R9	6800Ω			R46	4.7meg			
R10	10Ω			R47	330K			
R11	33K			R48	150Ω			
R12	120Ω			R49	10meg			
R13	100Ω			R50	1800Ω			
R14	100Ω			R51	100K			
R15	10Ω			R52	820K			
R16	220K			R53	22K			
R17	1000Ω			R54	80Ω 1W			
R18	68K			R55	1meg			
R19	4700Ω			R56	220K			
R20	22K			R57	100K			
R21	33K			R58	330K			
R22	150K			R59	220K			
R23	330K			R60	330K			
R24	1.8meg			R61	82K			
R25	470K			R62	100K			
R26	1meg			R63	100K			
R27	100K			R64	18K			
R28	33K 1W			R65	4.7meg			
R29	220K			R66	330K			
R30	10K			R67	100K			
R31	2.2meg			R68	150Ω			
R32	100K			R69	100K			
R33	100K			R70	820K			
R34	2.2meg			R71	1000Ω 4W			5W-SQ-1000
R35	330K			R72	1800Ω			
R36	330K			R73	10meg			
R37	220K			R74	22K			
R38	27K			R75	4.7meg			
R39	6.8meg			R76	4.7meg			
R40	100K			R77	33K 1W			

COILS (RF-IF)

ITEM No.	USE	REPLACEMENT DATA			NOTES
		Grundig Majestic PART No.	Merit PART No.	Miller PART No.	
L1	FM Ant. Matching	9236-068			
L2	FM Ant.	9231-027			
L3	RF Choke	BV1975			
L4	RF Choke	BV1966			
L5	FM RF	9226-037			
L6	RF Choke	BV1976			

COILS (RF-IF) (cont)

ITEM No.	USE	REPLACEMENT DATA				NOTES
		Grundig Majestic PART No.	Merit PART No.	Miller PART No.	Stancor PART No.	Workman TV PART No.
L7	FM Osc.	9226-038				
L8	RF Choke	BV1960				
L9	FM Mixer Plate	9226-032				
L10	1st FM IF	9226-033				
L11	SW Ant.	9232-001				
L12	400KC IF Trap	9208-057				
L13	Loopstick	9233-020				
L14	RF Choke	9208-001				
L15	SW Osc.	BV1961				
L16	EC Osc.	9232-002				
L17A	2nd FM IF	7207-308				
L17B	1st FM IF	7207-308				
L18	Ratio Detector	7207-328				
L19	2nd AM IF	BV2048				
L20	Tone Choke	BV2048				
L21	Line Choke	9227-004				
L22	Line Choke	9227-005				

KN 68L Coils (RF-IF)

TRANSFORMER (POWER)

ITEM No.	RATING	REPLACEMENT DATA				NOTES
		Grundig Majestic PART No.	Merit PART No.	Stancor PART No.	Thordarson PART No.	Triad PART No.
T1	PRI 117V @ .7A SEC. 1 200V @ .220V SEC. 2 6.3V @ 3.5A AC	9098-025				
	SEC. 3 6.3VCT @ .6A SEC. 4 SEC. 5					

TRANSFORMER (AUDIO OUTPUT)

ITEM No.	IMPEDANCE	REPLACEMENT DATA				NOTES
		Grundig Majestic PART No.	Merit PART No.	Stancor PART No.	Thordarson PART No.	Triad PART No.
T2	PRI 4800Ω					
T3	SEC. 2-4Ω CT 4800Ω	9080-056				

SPEAKER

ITEM No.	TYPE	REPLACEMENT DATA		NOTES
		Grundig Majestic PART No.	QUAM PART No.	
SP1	8"x12" PM	1-323	7046-001/002	
SP2	5"x7" PM	1-323	0459-000	
SP3	8"x12" PM	1-323	7046-001/002	
SP4	5"x7" PM	1-323	0459-000	

POWER RECTIFIERS

ITEM No.	RATING	REPLACEMENT DATA			NOTES
		Grundig Majestic PART No.	SAKES TAZZIAN PART No.	SYLVANIA PART No.	
M1	CURRENT (Measured) .120A	B450C150K4			Bridge Type Selenium

PARTS LIST AND DESCRIPTIONS (Continued)

FUSES

ITEM No.	TYPE	RATING	REPLACEMENT DATA			
			Grundig Majestic PART No.	LITTELFUSE PART No.	BUSS PART No.	
M2	3AG	1A 125V S/B		FUSE 313003 (3AG JA 250V)	FUSE MDX3	HOLDER

PHONO CARTRIDGE & NEEDLES

*NEEDLE LISTINGS SHOWN ARE FOR RESPECTIVE REPLACEMENT CARTRIDGES ONLY.

ITEM No.	REPLACEMENT DATA					NOTES
	Grundig Majestic PART No.	ASTATIC CARTRIDGE	ELECTRO-VOICE CARTRIDGE	SONOTONE PART No.		
M3		NEEDLE* 17	NEEDLE* Not Req.	NEEDLE* 81-1 * 8TA4-S	NEEDLE* N-8TA-S*	

MISCELLANEOUS

ITEM No.	PART NAME	Grundig Majestic PART No.	NOTES
M4	Tuning Cap.	9653-609	FM, 2 Gang (Part of FM Tuner Unit)
M5	Tuning Cap.	9653-012	AM, 2 Gang
M6	Switch		Function Selector (Pushbutton Type)
M7	Switch	7612-043	Tone (Pushbutton Type)

WIRING DATA

General-use Unshielded Hook-up Wire	Use BELDEN No. 8530 (Solid) Available in Ten Colors
Power Cord	8524 (Stranded) Available in Ten Colors
Low-Loss Shielded Lead (Interconnecting)	Use BELDEN No. 1765-B (6 Ft. Length)
Photo Pick-up Arm Cable	Use BELDEN No. 1725-K (7½ Ft. Length)
	Use BELDEN No. 8401
	Use BELDEN No. 8430 (Two Conductor - Twisted)