

RESISTORS

All wattages 1/2 watt, or less, unless otherwise listed.

ITEM No.	RATING	REPLACEMENT DATA		ITEM No.	RATING	REPLACEMENT DATA		REMARKS
		IRC PART No.	WORKMAN PART No.			IRC PART No.	WORKMAN PART No.	
R3	91meg			R24	82Ω			
R4	22K			R25	1meg			
R5	100K			R26	120K			
R6	2200Ω			R27	1meg			
R7	68K			R28	2.2meg			
R8	100K			R29	270K			
R9	10K 1W			R30	470K			
R10	1000Ω			R31	220Ω 2W			
R11	1meg			R32	100Ω 2W			
R12	2.2meg			R33	47K			
R13	22K			R34	2200Ω			
R14	27K 1W			R35	6800Ω 1W			
R15	100K			R36	4700Ω 1W			
R16	68K			R37	330Ω 5W			
R17	82Ω			R38	100Ω 2W			
R18	470K			R39	10Ω 5W			
R19	100K			R40	150Ω 2W			
R20	10K			R41	6.8Ω 1W			
R21	150K			R42	1meg			
R22	10K			R43				
R23	68K							

* Used in early versions.

COILS (RF-IF)

ITEM No.	USE	REPLACEMENT DATA		ITEM No.	RATING	REPLACEMENT DATA		REMARKS
		Merit PART No.	Stancor PART No.			Merit PART No.	Stancor PART No.	
L1	R.F. (50uh)	TV-259	4588	L24	5W-SQ-330			
L2	Indicator Shunt			L25	5W-SQ-10			
L3	R.F. (5uh)	BC-565	4609	L26				
L4	R.F. (5uh)			L27				
L5	R.F. (5uh)			L28				
L6	1650K IF			L29				
L7	1650K IF			L30				
L8	1650K IF			L31				
L9	1650K IF			L32				
L10	1650K IF			L33				
L11	1650K IF			L34				
L12	1650K IF			L35				
L13	1650K IF			L36				
L14	1650K IF			L37				
L15	1650K IF			L38				
L16	1650K IF			L39				
L17	1650K IF			L40				

TRANSFORMER (POWER)

ITEM No.	RATING	REPLACEMENT DATA		ITEM No.	RATING	REPLACEMENT DATA		REMARKS
		Merit PART No.	Stancor PART No.			Merit PART No.	Stancor PART No.	
T1	117VAC @ 115VAC @ 12.6VAC @ 1.44ADC @ 2A (68A) * (15A) *	271-088E (271-071C) ①		T958				
	(or)			T959				
	12.6VDC @ 5A (5.2A) *			T216				

TRANSFORMER (AUDIO OUTPUT)

ITEM No.	IMPEDANCE	REPLACEMENT DATA		ITEM No.	RATING	REPLACEMENT DATA		REMARKS
		Merit PART No.	Stancor PART No.			Merit PART No.	Stancor PART No.	
T2	11000Ω Tap @ 3600Ω	273-016		T958				

SPEAKER

ITEM No.	TYPE	REPLACEMENT DATA		ITEM No.	REMARKS
		GONSET PART No.	QUAM PART No.		
SP1	3" x 5" PM 3-4Ω	152-023	35A05		

COMPONENT COMBINATIONS

ITEM No.	USE	DESCRIPTION	GONSET PART No.	REPLACEMENT DATA
K1	Dot.-Squeech Net	(3) 100mmf., 0.01mf, (2) 220K, (3) 1meg		

VIBRATOR

ITEM No.	TYPE	INPUT VOLTS QUENCY	GONSET PART No.	REPLACEMENT DATA	REMARKS
M1	Interrupter	12	117-003	6371	
	Interrupter	6	117-008	5371	

FUSES

ITEM No.	TYPE	RATING	GONSET PART No.	HOLDER	FUSE	HOLDER	FUSE	HOLDER	FUSE	HOLDER
M2	3AG	1A	482-055		313001		MDL1			
	S/B	125V			(3AG 1A 125V)					
M3	3AG	1A	482-055		313001		MDL1			
	S/B	125V			(3AG 1A 125V)					
M4	3AG	10A	482-007 ①		311010		AGC 10			
	3AG	32V			(3AG 10A 32V)					
	3AG	20A	482-008 ②		307020		AGC 20			
	3AG	32V			(3AG 20A 32V)					

① Model G-14 (3430) only.
② Model G-14 (3433) only.

MISCELLANEOUS

ITEM No.	PART NAME	GONSET PART No.	NOTES
M5	Crystal		
M6	Crystal		
M7	Switch		
M8	Relay, 12V	171-096C	Receive Transmit Channel Selector (Rotary Water Type)
	Relay, 6V	111-091	Receive-Transmit
	Microphone	113-021	Ceramic
	Power Cable	678-031	AC
	Power Cable	678-030	12 Volt DC
	Power Cable	678-032	6 Volt DC

CABINETS & CABINET PARTS

(When Ordering Cabinets & Cabinet Parts, Specify Model, Chassis & Color)

ITEM No.	NAME	PART No.	DESCRIPTION
Knob		211-071	Small
Knob		211-073	Large
Cabinet		465-068A	
Front Panel		441-037	

FOLDER 7
SET 612

PHOTOFACT® Folder

GONSET MODELS
G-14 (3430), G-14 (3433)

GONSET MODELS
G-14 (3430), G-14 (3433)



MODEL G-14 (3430)

TRADE NAME	Gonset Models G-14 (3430), G-14 (3433)
MANUFACTURER	Gonset Division, Young Spring, Wire Corp., 801 S. Main Street, Burbank, California
TYPE SET	AC-Battery Operated 9 Tube Citizens Band Transmitter-Receiver
POWER SUPPLY	Model G-14 (3430): 110-120 Volts AC, 60 Cycles (or) 12 Volt Storage Battery Model G-14 (3433): 110-120 Volts AC, 60 Cycles (or) 6 Volt Storage Battery
RATING	RECEIVE: 71 Watts, .65 Amp. @117 Volts AC 5 Amp. @12.6 Volts DC 10 Amp. @6.3 Volts DC TRANSMIT: 74 Watts, .68 Amp. @117 Volts AC 5.2 Amp. @12.6 Volts DC 10.4 Amp. @6.3 Volts DC
TUNING RANGE	Any 4 of Citizens Band Channels 1 thru 23

NOTICE

ONLY THOSE PERSONS PROPERLY LICENSED ARE PERMITTED TO MAKE REPAIRS OR ADJUSTMENTS WHICH MAY RESULT IN ILLEGAL OPERATION. (REFER TO FCC RULES & REGULATIONS PART 19, SUBPART D, SECTION 19.71.)

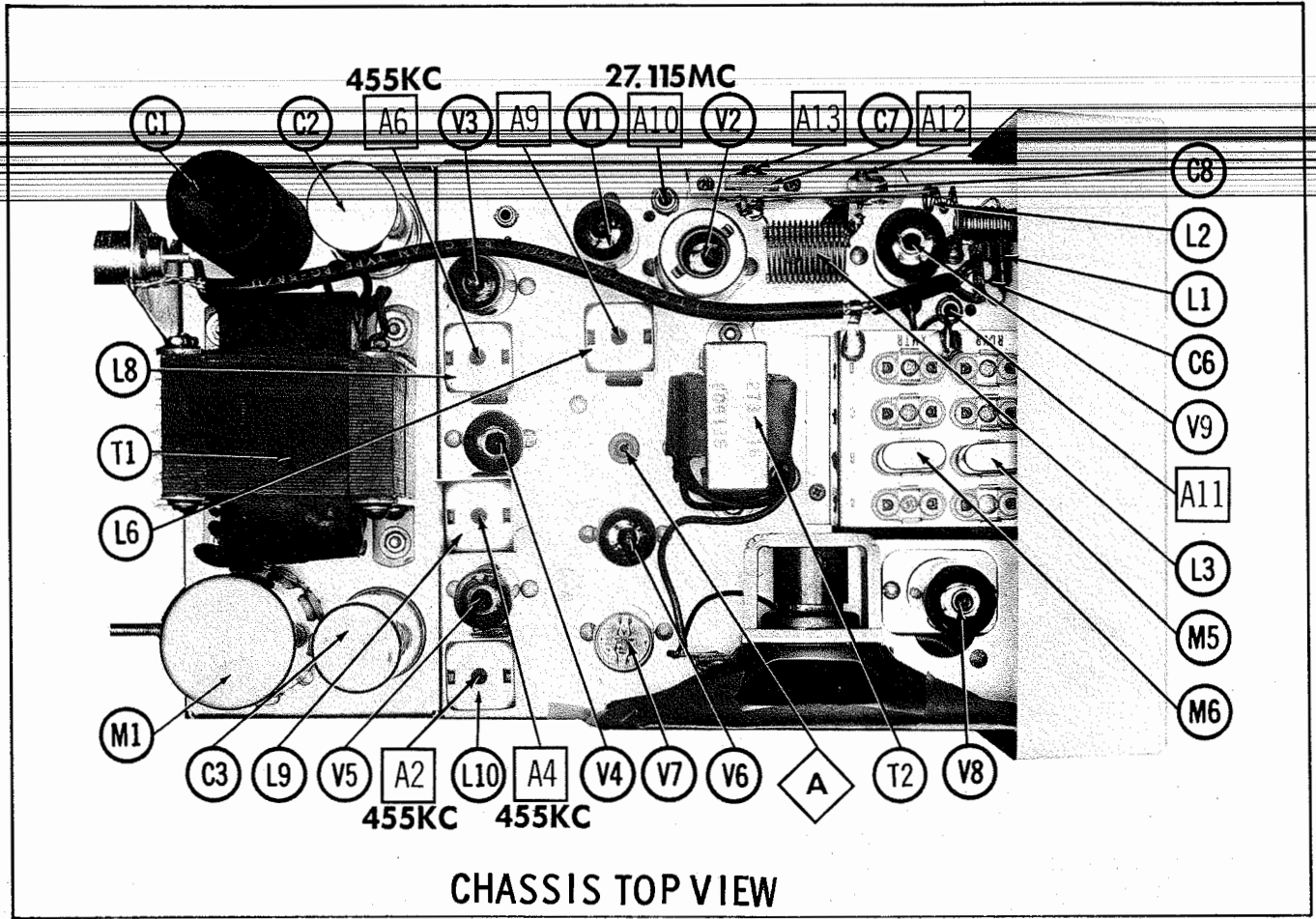
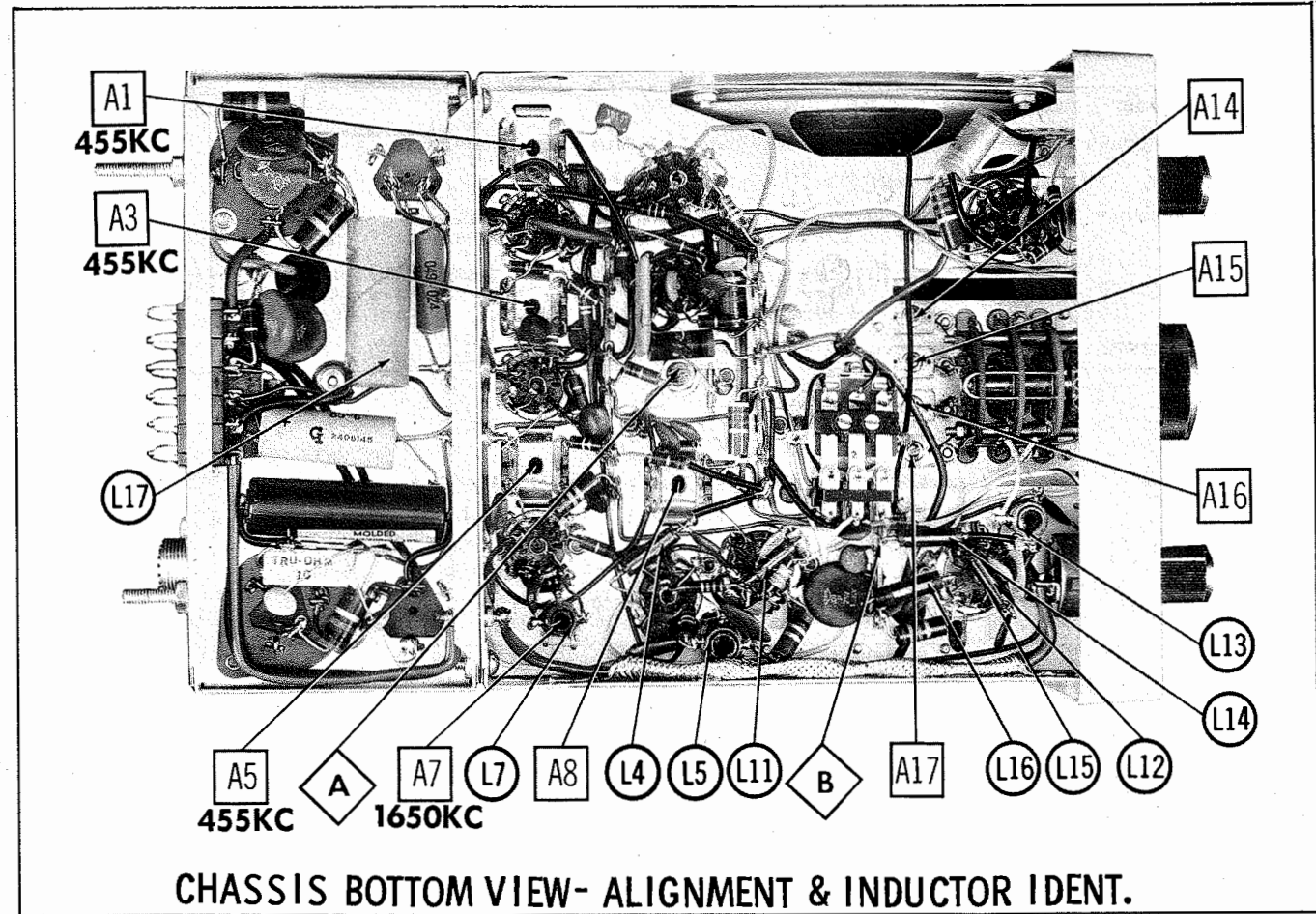
HOWARD W. SAMS & CO., INC. Indianapolis 6, Indiana



The listing of any available replacement part herein does not constitute in any case a recommendation, warranty or guaranty by Howard W. Sams & Co., Inc., as to the quality and suitability of such replacement part. The numbers of these parts have been compiled from information furnished to Howard W. Sams & Co., Inc., by the manufacturers of the particular type of replacement LY648

part listed. Reproduction or use, without express permission, of editorial or pictorial content, in any manner, is prohibited. No patent liability is assumed with respect to the use of the information contained herein. ©1963 Howard W. Sams & Co., Inc., Indianapolis 6, Indiana.

Printed in U.S. of America



WIRING DATA

General-use Hook-up Wire Use BELDEN No. 8530 (Solid) Available in 12 Colors Shielded Antenna Lead Use BELDEN No. 8524 (Stranded) Available in 12 Colors	
Coiled Microphone Cable Use BELDEN No. 8497 3 Conductor-1 Shielded for Press-to-Talk (Neoprene)	
Ignition Noise Suppression Use BELDEN No. 7300-Series Spark-Plug Sets	
Bonding Strap Use BELDEN No. 8661 (3/8 In.)	

TUBES

ITEM No.	AMPEREX	GENERAL ELECTRIC	RCA	RAYTHEON	SYLVANIA	TYPE
V1	RF Amp.	6B26	2nd IF Amp.-Speech Amp.		6BA6	
V2	1650KC Mixer-Rec. Crystal Osc. Converter	6U8A	Ant.-Squelch		6AL5	
V3	1st IF Amp.	6BE6	Det.-AVC-AF Amp.		6AV6	
V4		6BA6	Output-Modulator		6CW5	
			Transmit Osc.-Final Amp.		6CX6	

POWER RECTIFIERS & SIGNAL DIODES

ITEM No.	CURRENT RATING (Measured)	ORIGINAL Part or Type No.	RECTIFIERS		NOTES
			SARKES PART No.	TARZIAN PART No.	
X1	150A	474-025	IN3194	F4	HV Rectifier
X2	150A	474-025	IN3194	F4	HV Rectifier
X3	.087A	474-004	IN3194	2F4	LV Relay Control

ELECTROLYTIC CAPACITORS

ITEM No.	RATING CAP. VOLT.	CONSET PART No.	REPLACEMENT DATA		SPRAGUE PART No.
			AEROVOX PART No.	CORNELL-DUBILIER PART No.	
C1	125	073-018	AFH1-25-60	XA0312	TVLS-1470*
C2	125	073-019	AFH1-25-60	XA0312	TVLS-1470*
C3A	30	073-026	AFH2-39	B0310	TVL-2628
C4	25	073-002	PTT82	NLW25-25	MLV25-25
C5	50	073-118	PRS265	BE50-25	TD-50-25

* Not normally in distributor's stock. Available thru distributor on order to manufacturer.
① Model G14(3433) uses 250mfd 50V in this application (Part #073-078).

FIXED CAPACITORS

ITEM No.	RATING	REMARKS	REPLACEMENT DATA		SPRAGUE PART No.
			AEROVOX PART No.	CORNELL-DUBILIER PART No.	
C6	100 5%	#089-024 #089-005	ADM-15-101	TCZ-100	MS-31
C7	100 5%		BPD-02	TCZ-2R2	10TCC-V22
C8	4.0		BPD-01	DD-203	5HK-S10
C9	2 2 10%		BPD-01	DD-103	5HK-S10
C10	.02		BPD-01	DD-103	5HK-S10
C11	.01		BPD-01	DD-103	5HK-S10
C12	.01		BPD-01	DD-103	5HK-S10
C13	52 NPO 10%		BPD-01	DD-103	5HK-S10
C14	27 10%		BPD-01	DD-103	5HK-S10
C15	4.7 10%		BPD-01	DD-103	5HK-S10
C16	.01		BPD-01	DD-103	5HK-S10
C17	30 NPO 10%		BPD-01	DD-103	5HK-S10
C18	.68		BPD-01	DD-103	5HK-S10
C19	.01		BPD-01	DD-103	5HK-S10

PARTS LIST AND DESCRIPTION

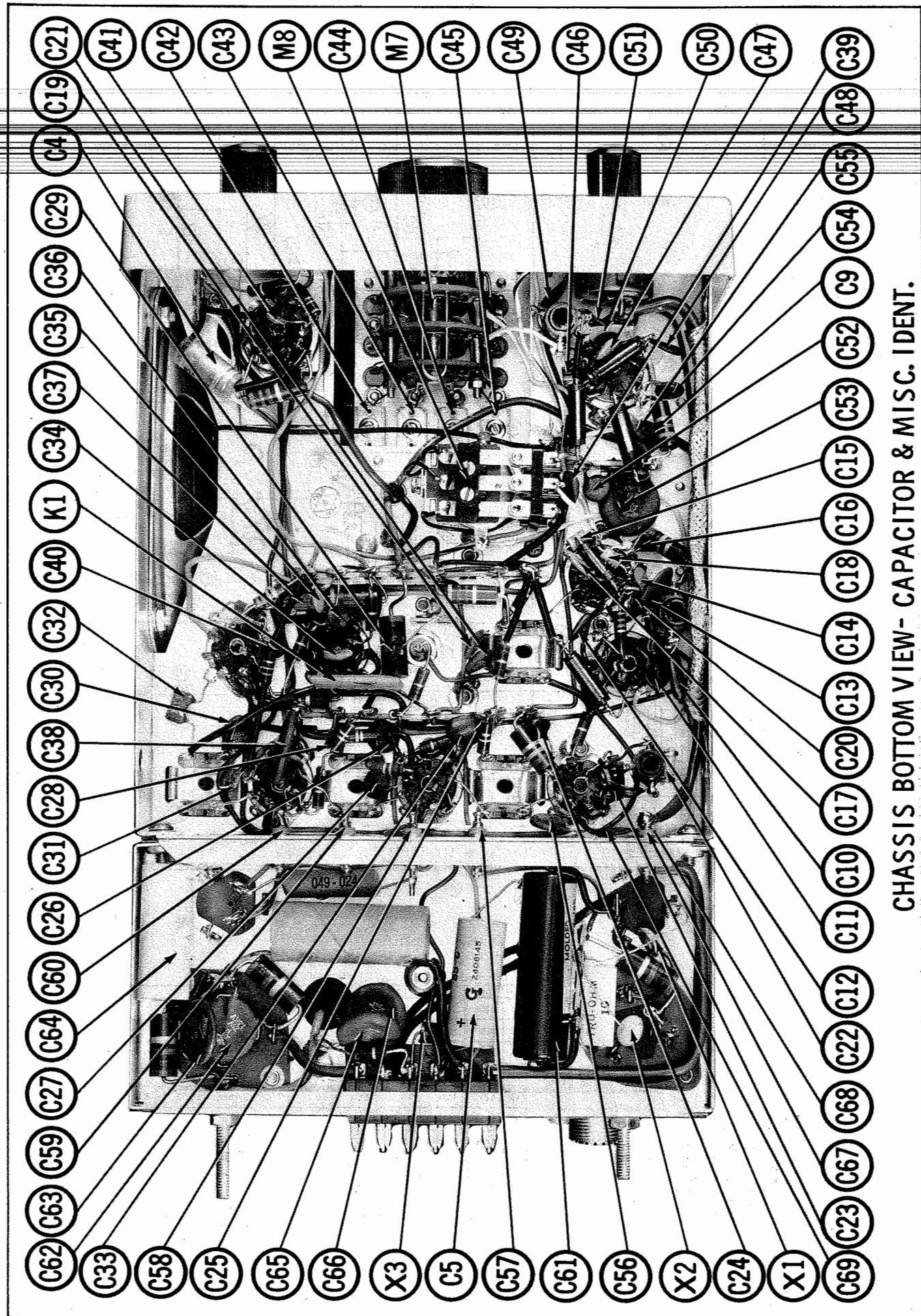
FIXED CAPACITORS (cont)

ITEM No.	RATING	REMARKS	AEROVOX PART No.	CORNELL-DUBILIER PART No.	ELMENDO PART No.	MALLORY PART No.	SPRAGUE PART No.
C20	.01	#084-244	BPD-01	DD-103	CCD-103	GP110	5HK-S10
C21	22 N330 5%		ADM-15-101	TCZ-100	CCD-103	GP110	5HK-S10
C22	100 5%		BPD-01	DD-103	CCD-103	GP110	5HK-S10
C23	.01		BPD-01	DD-103	CCD-103	GP110	5HK-S10
C24	.01		BPD-01	DD-103	CCD-103	GP110	5HK-S10
C25	.01		BPD-01	DD-103	CCD-103	GP110	5HK-S10
C26	.01		BPD-01	DD-103	CCD-103	GP110	5HK-S10
C27	.01		BPD-01	DD-103	CCD-103	GP110	5HK-S10
C28	.01		BPD-01	DD-103	CCD-103	GP110	5HK-S10
C29	.01		BPD-01	DD-103	CCD-103	GP110	5HK-S10
C30	.01		BPD-01	DD-103	CCD-103	GP110	5HK-S10
C31	.01		BPD-01	DD-103	CCD-103	GP110	5HK-S10
C32	100 5%		ADM-15-101	TCZ-100	CCD-103	GP110	5HK-S10
C33	.01		BPD-01	DD-103	CCD-103	GP110	5HK-S10
C34	.002		BPD-002	DD-202	CCD-202	GP220	5HK-S10
C35	.002		BPD-002	DD-202	CCD-202	GP220	5HK-S10
C36	470 10%		DI-470	DD-471	CCS-471	GP240	5HK-S10
C37	.1 200V		P288N-1	MP2F1	ZDP-3-104	GP240	5HK-S10
C38	.01		BPD-01	DD-103	CCD-103	GP110	5HK-S10
C39	.01		BPD-01	DD-103	CCD-103	GP110	5HK-S10
C40	.01		BPD-01	DD-103	CCD-103	GP110	5HK-S10
C41	.01		BPD-01	DD-103	CCD-103	GP110	5HK-S10
C42	3-35				403	GP110	5HK-S10
C43	3-35				403	GP110	5HK-S10
C44	3-35				403	GP110	5HK-S10
C45	3-35				403	GP110	5HK-S10
C46	2.2 5%				403	GP110	5HK-S10
C47	68 N750 10%				403	GP110	5HK-S10
C48	.01		N750-DI 68	TCZ-2R2	TCN-68	GP110	5HK-S10
C49	.01		BPD-01	DD-103	CCD-103	GP110	5HK-S10
C50	51 NPO 5%		NPO-DI 68	TCZ-2R2	TCN-68	GP110	5HK-S10
C51	68 NPO 10%		BPD-01	DD-103	CCD-103	GP110	5HK-S10
C52	.01		BPD-01	DD-103	CCD-103	GP110	5HK-S10
C53	.01		BPD-01	DD-103	CCD-103	GP110	5HK-S10
C54	470 1000V		1468-00047	DD-103	CCD-103	GP110	5HK-S10
C55	.01		BPD-01	DD-103	CCD-103	GP110	5HK-S10
C56	.01		BPD-01	DD-103	CCD-103	GP110	5HK-S10
C57	.01		BPD-01	DD-103	CCD-103	GP110	5HK-S10
C58	.01		BPD-01	DD-103	CCD-103	GP110	5HK-S10
C59	.01		BPD-01	DD-103	CCD-103	GP110	5HK-S10
C60	.01		BPD-01	DD-103	CCD-103	GP110	5HK-S10
C61	52 600V 10%		P688N-25	DD16-103	DD16-103	GP110	5HK-S10
C62	.01		BPD-01	DD-103	CCD-103	GP110	5HK-S10
C63	.01		BPD-01	DD-103	CCD-103	GP110	5HK-S10
C64	100 100V		P288N-1.0	DD16-103	DD16-103	GP110	5HK-S10
C65	.01		BPD-01	DD-103	CCD-103	GP110	5HK-S10
C66	.01		BPD-01	DD-103	CCD-103	GP110	5HK-S10
C67	.01		BPD-01	DD-103	CCD-103	GP110	5HK-S10
C68	.01		BPD-01	DD-103	CCD-103	GP110	5HK-S10
C69	.01		BPD-01	DD-103	CCD-103	GP110	5HK-S10

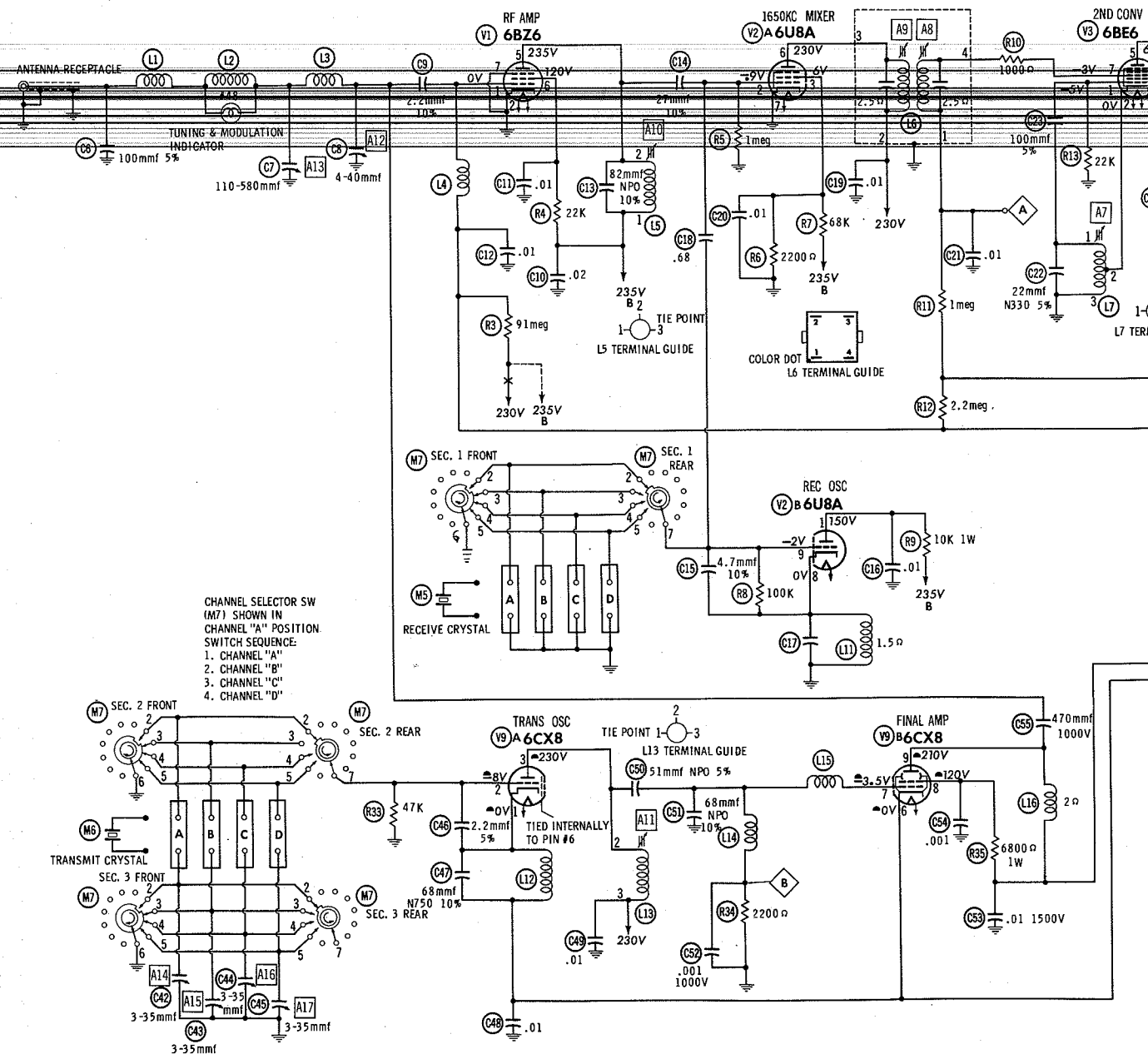
CONTROLS

All wattages 1/2 watt, or less, unless otherwise listed.

ITEM No.	USE	RESIST-ANCE	CONSET PART No.	CORNELL-DUBILIER PART No.	ELMENDO PART No.	MALLORY PART No.
R1	Volume & Switch	250K	052-081	B-51, KR-1, or (F2-250, KR-1, SW2-42, FS-3, SU204)	Q13-130, 75-130, or (BUI, C223, SS, CC7-133, or (UAS5L, SU204)	Q13-130, 75-130, or (BUI, C223, SS, CC7-133, or (UAS5L, SU204)
R2	Squelch	500K	052-082A	B-51, KR-1, or (F2-250, KR-1, SW2-42, FS-3, SU204)	Q13-130, 75-130, or (BUI, C223, SS, CC7-133, or (UAS5L, SU204)	Q13-130, 75-130, or (BUI, C223, SS, CC7-133, or (UAS5L, SU204)



CHASSIS BOTTOM VIEW- CAPACITOR & MISC. IDENT.



RESISTANCE READINGS

ITEM	TUBE	Pin 1	Pin 2	Pin 3	Pin 4	Pin 5	Pin 6	Pin 7	Pin 8	Pin 9
V1	6BZ6	3.5meg	0Ω	FIL	FIL	†430Ω	†22K	0Ω		
V2	6U8A	10K	1meg	†68K	FIL	FIL	†1000Ω	0Ω	1.5Ω	100K
V3	6BE6	22K	0Ω	FIL	FIL	†27K	†27K	1.5meg		
V4	6BA6	1.6meg	0Ω	FIL	FIL	†10K	†78K	82Ω		
V5	6BA6	1meg	0Ω	FIL	FIL	†10K	†68K	82Ω		
V6	6AL5	1.2meg	220K	FIL	FIL	2.5meg	0Ω	†1.5meg		
V7	6AV6	2.2meg	0Ω	FIL	FIL	440K	3.5meg	†270K		
V8	6CW5	470K	470K	220Ω	FIL	FIL	NC	†370Ω	NC	†430Ω
V9	6CX8	0Ω	47K	†900Ω	FIL	FIL	0Ω	2200Ω	†7500Ω	†730Ω

ALL READINGS TAKEN IN "RECEIVE" POSITION UNLESS OTHERWISE DESIGNATED.
 ALL CONTROLS SET AT MINIMUM EXCEPT SQUELCH CONTROL WHICH IS SET AT NORMAL POSITION.
 † MEASURED FROM OUTPUT OF X2. ▲ MEASURED IN "TRANSMIT" POSITION. NC NO CONNECTION

SEE PARTS LIST FOR ALTERNATE VALUE OR APPLICATION

1. DC voltage measurements taken with vacuum tube voltmeter; AC voltages measured with 1000 ohm per volt voltmeter.
2. Socket connections are shown as bottom views.
3. Measured values are from socket pin to common ground.
4. Line voltage maintained at 117 volts for voltage readings.
5. Nominal tolerance on component values makes possible a variation of ± 15% in voltage and resistance readings.

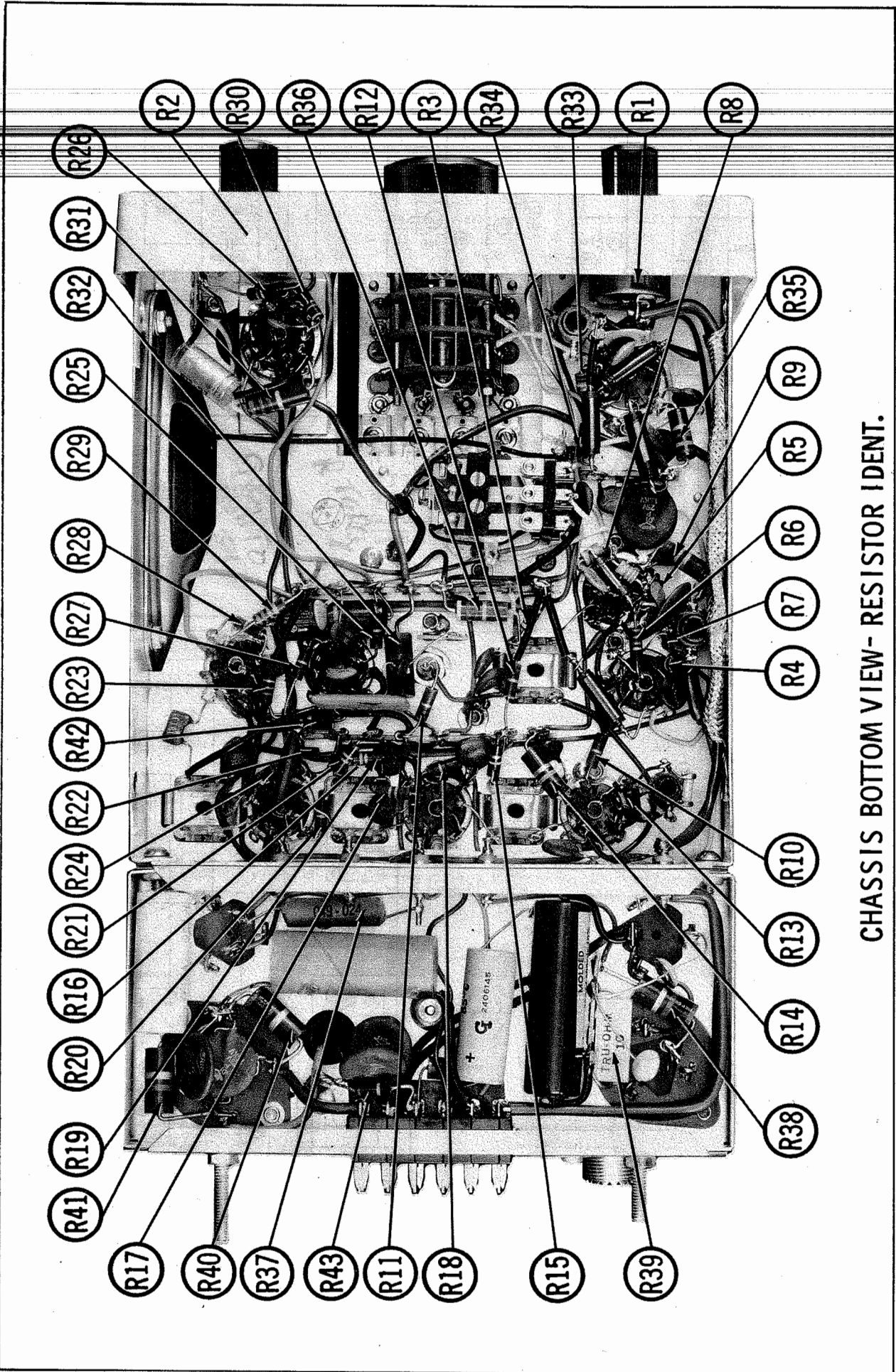
A PHOTOFAC STANDARD NOTATION SCHEMATIC
 ©Howard W. Sams & Co., Inc. 1963

ALIGNMENT INSTRUCTIONS

ALIGNMENT INSTRUCTIONS—READ CAREFULLY BEFORE ATTEMPTING ALIGNMENT	
Best results are obtained when adjusting A12 and A13 if the antenna normally used is connected and the unit is as nearly in the cabinet as possible.	
Suggested Alignment Tools:	
A1 thru A7.....	GENERAL CEMENT #5097, 8727 WALSCO #2515
A8 thru A11.....	GENERAL CEMENT #8282, 8606, 8606-L, 9091 WALSCO #2526, 2541, 2542, 2543, 2544
A12 thru A17.....	GENERAL CEMENT #5000, 5003, 5066, 8276, 8290, 9087, 9089 WALSCO #2512, 2525, 2528

RECEIVER ALIGNMENT			
Connect DC VTVM between point \diamond and ground. Use only enough generator output to provide a usable indication.			
SIGNAL GENERATOR	CHANNEL	ADJUST	REMARKS
High side thru .05mfd to pin 7 (grid) of Converter, low side to ground. Tune to 455KC (Unmod.)	ANY	A1, A2, A3, A4, A5, A6	Adjust for maximum deflection.
High side thru .05mfd to pin 7 (grid) of Converter, low side to ground. Tune to 1650KC (Unmod.)	Center Channel	A7	Adjust for maximum deflection.
High side thru .05mfd to pin 2 (grid) of 1650KC Mixer, low side to ground. Tune to 1650KC (Unmod.)	ANY	A8, A9	"
High side to antenna input, low side to ground. Tune to Channel Frequency.	Center Channel	A10	"

TRANSMITTER ADJUSTMENTS			
ONLY THOSE PERSONS PROPERLY LICENSED ARE PERMITTED TO MAKE REPAIRS OR ADJUSTMENTS WHICH MAY RESULT IN ILLEGAL OPERATION. (REFER TO FCC RULES & REGULATIONS PART 19, SUBPART D, SECTION 19.71)			
SPECIAL INSTRUCTIONS	INDICATOR	ADJUST	REMARKS
Connect antenna dummy load to antenna input. Set transmitter for center channel operation.	Connect VTVM to point \diamond , common to ground.	A11	Adjust for maximum deflection.
"	Indicator light on front panel or RF wattmeter.	A12, A13	Adjust for maximum indication until no difference in output is noticed when switching channels. Slight readjustment may be necessary when the unit is reconnected to the antenna.
Connect Antenna	Use Frequency measuring device or receiver of known accuracy.	A14, A15, A16, A17	Adjust so that associated crystal falls in the exact center of the specified channel.



CHASSIS BOTTOM VIEW - RESISTOR IDENT.

GONSET MODELS
G-14 (3430), G-14 (3433)

FOLDER 7

