

PARTS LIST AND DESCRIPTIONS (Continued)

COILS (RF-IF)

ITEM No.	USE	REPLACEMENT DATA			NOTES
		SYLVANIA PART No.	Merit PART No.	Stancor PART No.	
L1	Loopstick	581-0021		2003	
L2	Osc.	113-0078			
L3	1st IF Trans.	121-0035			
L4	2nd IF Trans.	122-0036			

TRANSFORMER (DRIVER)

ITEM No.	TURNS RATIO	REPLACEMENT DATA			NOTES
		SYLVANIA PART No.	Merit PART No.	Thordarson PART No.	
T1	3.2 1	149-0086			

TRANSFORMER (AUDIO OUTPUT)

ITEM No.	IMPEDANCE	REPLACEMENT DATA			NOTES
		SYLVANIA PART No.	Merit PART No.	Thordarson PART No.	
T2	3500	149-0095		TA-41①	① Use 160 Tap

SPEAKER

ITEM No.	TYPE	REPLACEMENT DATA			NOTES
		SYLVANIA PART No.	QUAM PART No.		
SP1	2 3/4" PM	539-2301	27A06212		

BATTERIES

ITEM No.	VOLTAGE	SYLVANIA PART No.	REPLACEMENT DATA			NOTES
			BURGESS "A"	EVEREADY "B"	MALLORY "B"	
M1	9V		2N6	246	M-1602	

MISCELLANEOUS

ITEM No.	PART NAME	SYLVANIA PART No.	NOTES
M2	Tuning Cap. Printed Board	170-0041 32-96451-2	2 Gang

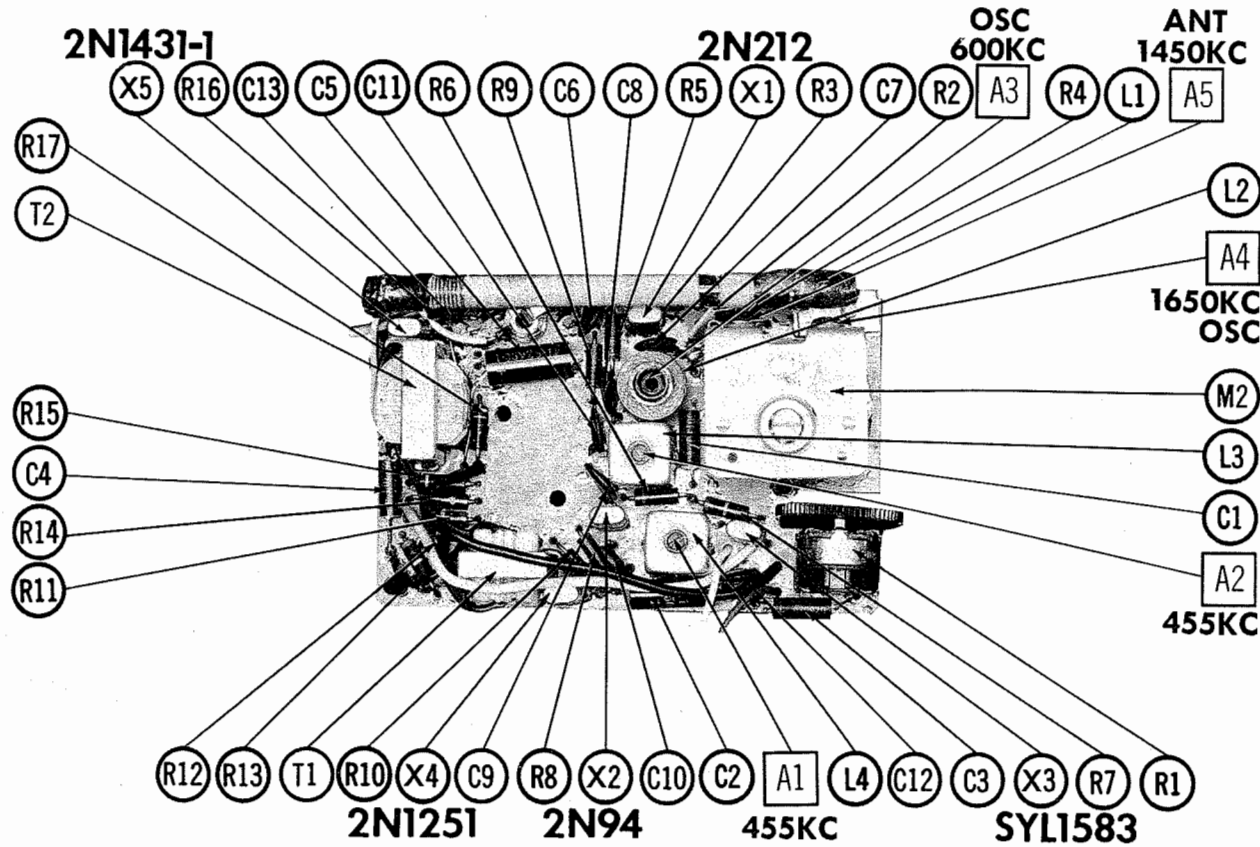
CABINETS & CABINET PARTS  
(When Ordering Cabinets & Cabinet Parts, Specify Model, Chassis & Color)

NAME	PART NO.	DESCRIPTION
Knob	741-0087	Tuning, Models 5P16R, 5P16S, 5P16T
Knob	741-0077	Tuning, Models 2300, 2406, 2409, 2500, 2601, 2602, 2605, 2609, 2700, 2701, 2714
Knob	740-0347	Volume, Models 5P16R, 5P16S, 5P16T
Knob	740-0325	Volume, Models 2300, 2406, 2409, 2500, 2601, 2602, 2605, 2609, 2700, 2701, 2714
Handle	818-0264	Models 2500, 2601, 2602, 2605, 2609

WIRING DATA

General-use Unshielded Hook-up Wire ..... Use BELDEN No. 8530 (Solid) Available in Ten Colors  
8524 (Stranded) Available in Ten Colors

CHASSIS—TOP VIEW



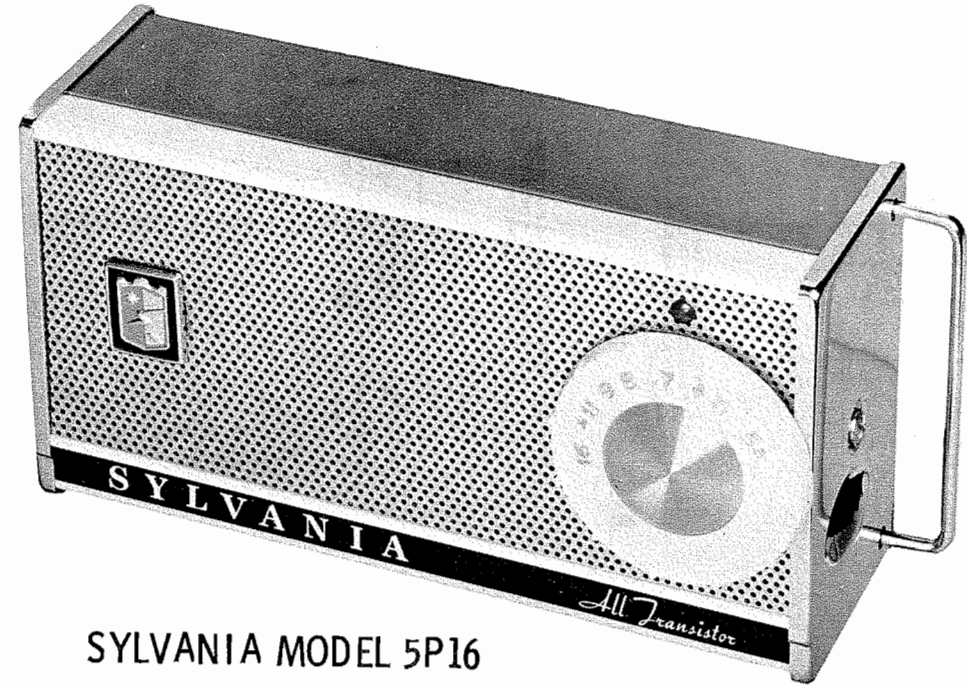
FOLDER 13  
SET 521

PHOTOFACT® Folder

with CIRCUITRACE®

SYLVANIA, GOLDEN SHIELD  
CHASSIS 649-1, -2

SYLVANIA, GOLDEN SHIELD  
CHASSIS 649-1, -2



SYLVANIA MODEL 5P16

TRADE NAME	Sylvania Models 5P16R, 5P16S, 5P16T
MANUFACTURER	Golden Shield Models 2300, 2406, 2409, 2500, 2601, 2602, 2605, 2609, 2700, 2701, 2714(Ch. 649-1, 649-2)
TYPE SET	Sylvania Home Electronics, Div. of Sylvania Electric Products, Inc., 700 Ellicott St., Batavia, N. Y.
POWER SUPPLY	Battery Operated Transistorized Portable AM Receiver
TUNING RANGE—BROADCAST	9 Volts DC RATING 15MA @ 9 Volts DC (Min. -Normal Volume, No Signal)
	25MA @ 9 Volts DC (Max. Volume With Signal)

ALIGNMENT INSTRUCTIONS

ALIGNMENT INSTRUCTIONS—READ CAREFULLY BEFORE ATTEMPTING ALIGNMENT					
Volume control should be at maximum position. Output of signal generator should be no higher than necessary to obtain an output reading.					
Suggested Alignment Tools: A1, A2... GENERAL CEMENT #5009, 8195, 8274, 8275, 8728, 8729, 8987, 8988, 8989					
WALSCO #2515, 2531, 2532					
A3..... GENERAL CEMENT #8282, 8606, 8606-L, 9295, 9440					
WALSCO #2526, 2543, 2544, 2545					
A4, A5... GENERAL CEMENT #5004, 5008, 5009					
WALSCO #2520					
SIGNAL GENERATOR COUPLING	SIGNAL GENERATOR FREQUENCY	RADIO DIAL SETTING	OUTPUT METER	ADJUST	REMARKS
1. Loop	455KC (400v Mod.)	Tuning gang fully open.	Across voice coil.	A1, A2	Fashion loop of several turns of wire and radiate signal into loop of receiver. Adjust for maximum output.
2. "	600KC	600KC	"	A3	Adjust for maximum output while rocking tuning gang.
3. "	1650KC	1650KC	"	A4	Adjust for maximum output.
4. "	1450KC	1450KC Signal.	"	A5	"

HOWARD W. SAMS & CO., INC. Indianapolis 6, Indiana



The listing of any available replacement part herein does not constitute in any case a recommendation, warranty or guaranty by Howard W. Sams & Co., Inc., as to the quality and suitability of such replacement part. The numbers of these parts have been compiled from information furnished to Howard W. Sams & Co., Inc., by the manufacturers of KF350

the particular type of replacement part listed. Reproduction or use, without express permission, of editorial or pictorial content, in any manner, is prohibited. No patent liability is assumed with respect to the use of the information contained herein. © 1961 Howard W. Sams & Co., Inc., Indianapolis 6, Indiana. Printed in U.S. of America

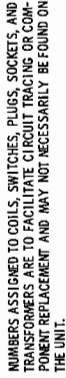
DATE 3 - 61

SET 521

FOLDER 13

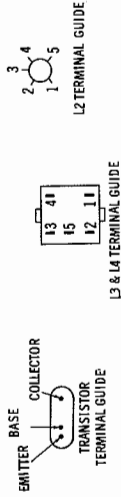
SYLVANIA, GOLDEN SHIELD  
CHASSIS 649-1, -2

SET 521 FOLDER 13



NOTE: CHASSIS 649-1 & 649-2 ARE IDENTICAL EXCEPT FOR FOLLOWING:

1. PNP TRANSISTORS IN CHASSIS 649-2 (SEE PARTS LIST)
2. BATTERY AND ELECTROLYTIC POLARITY REVERSED IN CHASSIS 649-2.



Ø SEE PARTS LIST FOR ALTERNATE  
VALUE OR APPLICATION

DC COIL RESISTANCE VALUES UNDER ONE OHM  
NOT SHOWN ON SCHEMATIC DIAGRAM  
ARROWS ON CONTROLS INDICATE CLOCKWISE R  
(CONTROL VIEWED FROM SHAFT END)

1. DC voltage measurements taken with vacuum tube voltmeter.
2. Socket connections or transistor terminals are shown as bottom views.
3. Measured values are from socket pin or terminal to common ground.
4. Nominal tolerance on component values makes possible a variation of  $\pm 15\%$  in voltage and resistance readings.
5. Volume control at maximum, no signal applied for voltage measurements.

RESISTANCE MEASUREMENTS NOT GIVEN BECAUSE OF THE WIDE VARIATION IN INTERNAL TRANSISTOR RESISTANCE.

A PHOTOFACT STANDARD NOTATION SCHEMATIC  
with **CIRCUITRACE**<sup>®</sup>  
© Howard W. Sams & Co., Inc. 1961

**SYLVANIA, GOLDEN SHIELD  
CHASSIS 649-1, -2**

## PARTS LIST AND DESCRIPTIONS

- \* Used in Chassis 649-2.
- † Used in some versions of Chassis 649-2.
- ◆ Used in Chassis 649-1.

ITEM No.	RATING		REPLACEMENT DATA					NOTES
	CAP.	VOIT.	SYLVANIA PART No.	AEROVOX PART No.	CORNEILL DUBLIER PART No.	MALLORY PART No.	PYRAMID PART No.	
C1	5	3	161-1054	PFT-3005	NLMW-15	TT8X5	ML5-6	TE-1052-2
C2	5	3	161-1054	PFT-3005	NLMW-15	TT8X5	ML5-6	TE-1052-2
C3	5	3	161-1054	PFT-3005	NLMW-15	TT8X5	ML5-6	TE-1052-2
C4	5	3	161-1054	PFT-3005	NLMW-15	TT8X5	ML5-6	TE-1052-2
C5	50	10	161-1039	PFT-10050	NLMW50-10	TT10X50	MLV50-10	TE-1119

## FIXED CAPACITORS:

**FIXED CAPACITORS**  
Capacity values given in the rating column are in mfd. for Paper Capacitors, and in mmfd. for Mica and Ceramic Capacitors.

† Alternate Value

## CONTROLS

**RESISTORS (IRC or EQUIVALENT)**  
All wattages 1/2 watt, or less, unless otherwise listed.

## RESISTORS (IRC or EQUIVALENT)

All wattages 1/2 watt, or less, unless otherwise listed.

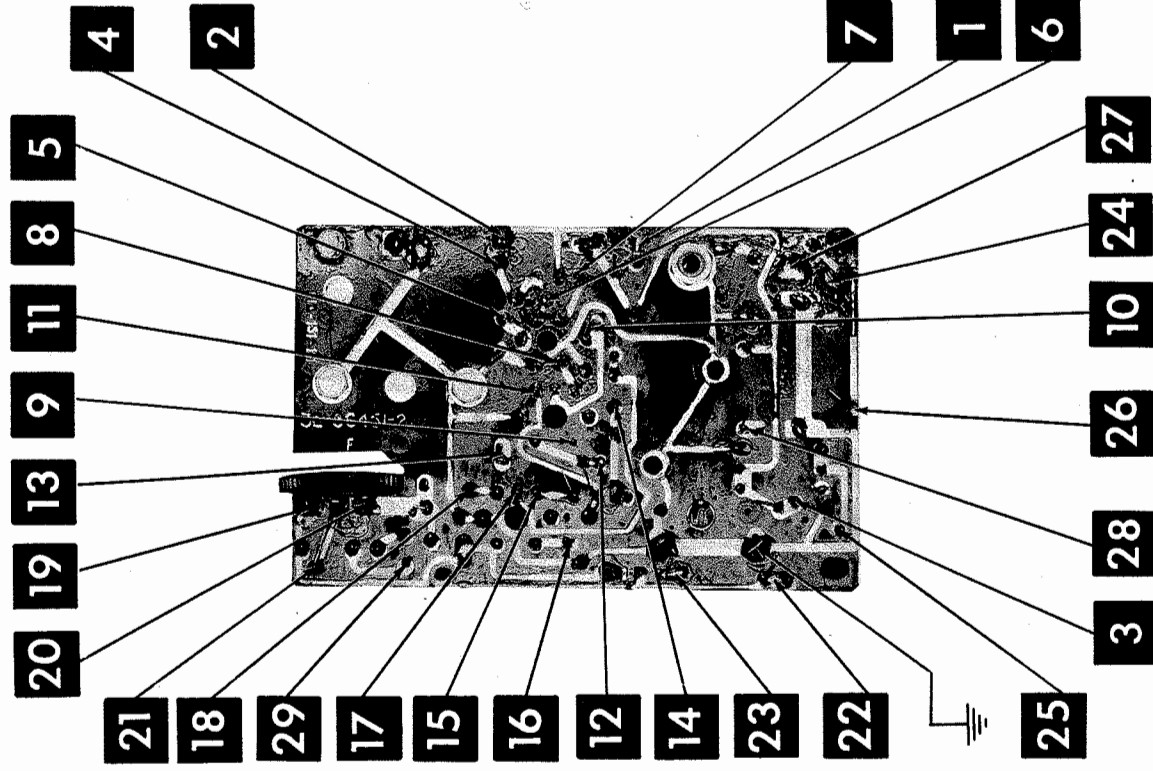
ITEM No.	RATING	REMARKS
R2	6000Q	
R3	33K	(15K) †
R4	2200Q	(3300Q) †
R5	1000Q	
R6	1000Q	
R7	10K	

† Used In Chassis 649-I.  
\* Used In Chassis 649-I Coded 01.

## FOLDER 13

**SYLVANIA, GOLDEN SHIELD  
CHASSIS 649-1, -2**

# PRINTED BOARD

A Howard W. Sams  
CIRCUITRACE® Photo

FOI DER 13