

NOTE: POSITIVE ON BATTERY GROUND.

VOLTAGE READINGS

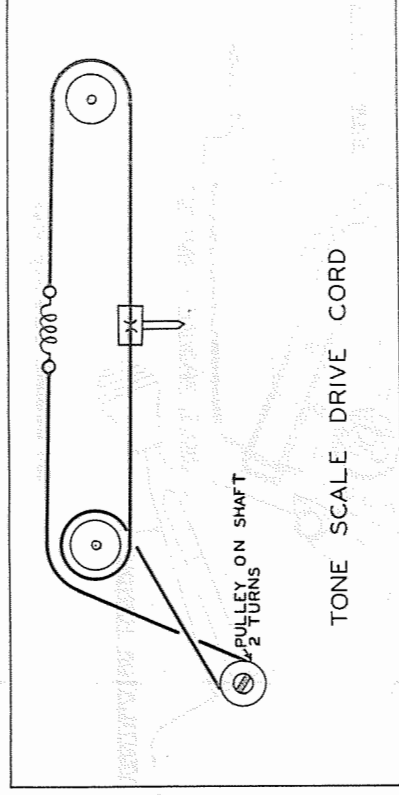
Item	Tube	Pin 1	Pin 2	Pin 3	Pin 4	Pin 5	Pin 6	Pin 7	Pin 8
1	7A7	-6VDC	157VDC	83VDC	2VDC	OV.	-2VDC	2VDC	OV.
2	7B8	OV.	230VDC	175VDC	-47VDC	83VDC	-2VDC	2VDC	-6VDC
3	7A7	-6VDC	230VDC	83VDC	OV.	OV.	-2VDC	7VDC	OV.
4	7B6	-6VDC	107VDC	-2VDC	OV.	-45VDC	OV.	OV.	OV.
5	7C5	-6VDC	260VDC	230VDC	8VDC	OV.	OV.	12VDC	OV.
6	7Y4	OV.	OV.	295VAC	OV.	OV.	295VAC	268VDC	-6VDC

RESISTANCE READINGS

Item	Tube	Pin 1	Pin 2	Pin 3	Pin 4	Pin 5	Pin 6	Pin 7	Pin 8
1	7A7	.3 Ω	348K Ω	363K Ω	150 Ω	OV.	1.4 MEG Ω	150 Ω	OV.
2	7B8	OV.	330K Ω	343K Ω	81K Ω	OV.	363K Ω	150 Ω	.3 Ω
3	7A7	.3 Ω	330K Ω	363K Ω	OV.	OV.	1 MEG Ω	93 Ω	OV.
4	7B6	.3 Ω	660K Ω	15 MEG Ω	OV.	185K Ω	OV.	OV.	OV.
5	7C5	.3 Ω	330K Ω	330K Ω	250 Ω	300K Ω	350K Ω	360 Ω	OV.
6	7Y4	OV.	OV.	360 Ω	OV.	OV.	325 Ω	330K Ω	.3 Ω

RESISTANCE READINGS IN THE B+ CIRCUITS MAY VARY WIDELY ACCORDING TO THE CONDITION OF THE FILTER CAPACITORS

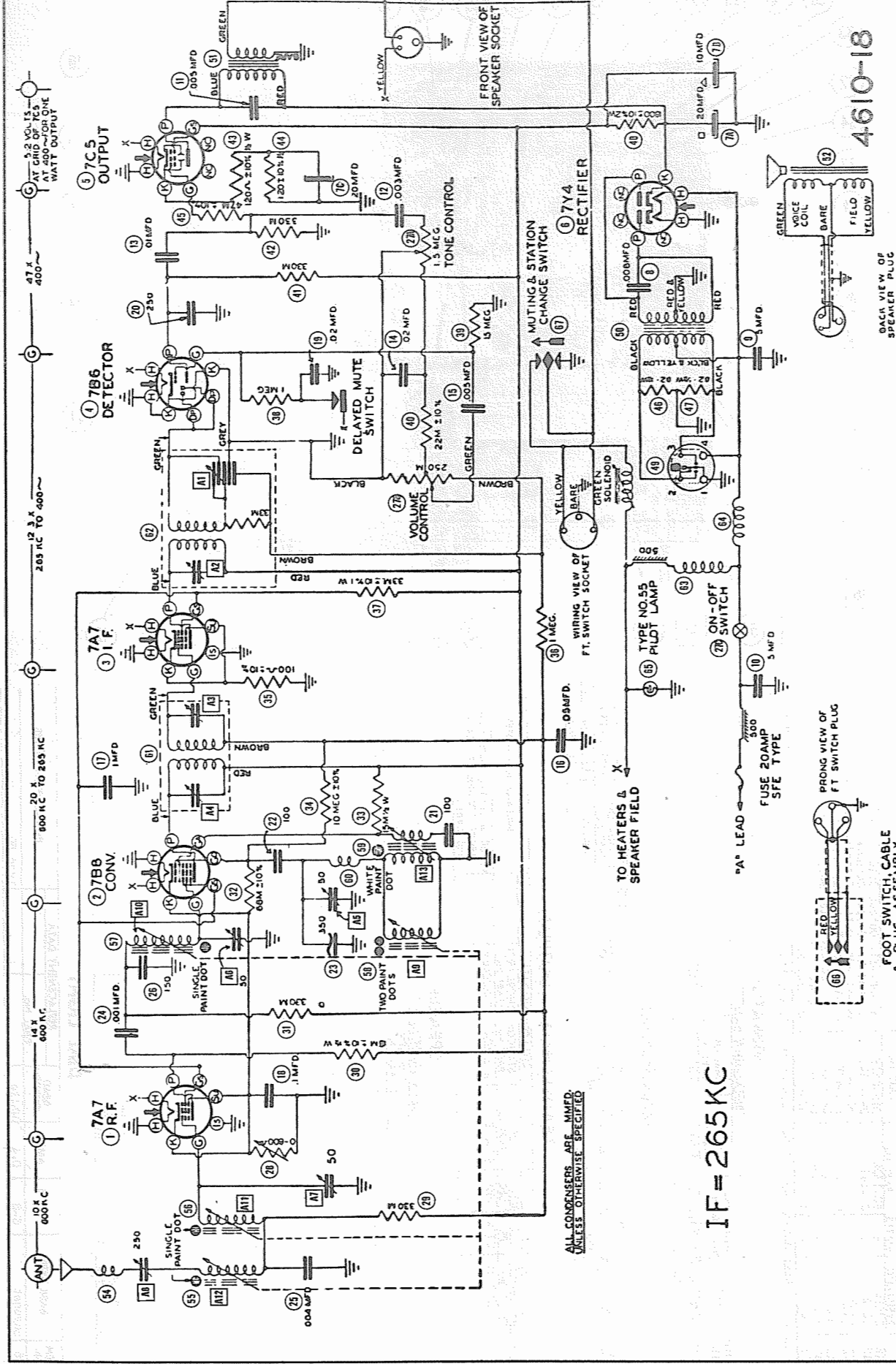
- DC Voltage measurements are at 20,000 ohms per volt; AC Voltages measured at 1000 ohms per volt.
- Socket connections are shown as bottom views.
- Measured values are from socket pin to common negative.
- Battery voltage maintained at 6.3 volts for voltage readings.
- Nominal tolerance on component values makes possible a variation of $\pm 10\%$ in voltage and resistance readings.
- Volume control at maximum, no signal applied for voltage measurements.



PUSHBUTTON ADJUSTMENT

There are five automatic tuning positions which may be adjusted to five desired stations. Adjust as follows:

- Press station selector bar until number 1 appears in station indicator window.
- Pull manual tuning knob outward to engage the automatic mechanism.
- Select the station desired and tune to its frequency by turning tuning knob. Tune very carefully for clearest reception.
- Press station selector bar and tune in station desired for No. 2 position. Use same procedure for positions No. 3, 4 and 5.



IF = 265 KC

THE COOPERATION OF THE MANUFACTURER OF THIS RECEIVER MAKES IT POSSIBLE TO BRING YOU THIS SERVICE

PARTS LIST AND DESCRIPTIONS
 TUBES

CHASSIS—TOP VIEW

ITEM No.	USE	REPLACEMENT DATA			DATA BASE TYPE	INSTALLATION NOTES
		FORD PART No.	STANDARD REPLACEMENT	TYPE		
1	RF AMP.	7167	7167	6X	5AB	
2	Converter	7167	7168	6X		
3	1st Amp.	7167	7167	6V		
4	Det. AVC-AP	7167	7167	6V		
5	Power Output	705	705	6A		
6	Rectifier	714	714			

CAPACITORS

Capacity values given in the rating column are in mfd. for Electrolytic and Paper Capacitors, and in mmfd. for Mica and Ceramic Capacitors.

ITEM No.	RATING	REPLACEMENT DATA			IDENTIFICATION CODES
		FORD PART No.	SOLAR PART No.	SPRAGUE PART No.	
7A	350	22-1387	DU-2X20-350	EL-212	Filter
7B	10				
7C	200				
8	.005		4L-25-25	TR-24	1699-008
9	1500		XT11S10-.005	TC-5	484-15
10	150		22-1448	TC-5	484-15
11	150		22-1448	TC-5	484-15
12	.005		22-1448	TC-5	484-15
13	.005		22-1448	TC-5	484-15
14	.005		22-1448	TC-5	484-15
15	.005		22-1448	TC-5	484-15
16	.005		22-1448	TC-5	484-15
17	.005		22-1448	TC-5	484-15
18	.005		22-1448	TC-5	484-15
19	.005		22-1448	TC-5	484-15
20	.005		22-1448	TC-5	484-15
21	.005		22-1448	TC-5	484-15
22	.005		22-1448	TC-5	484-15
23	.005		22-1448	TC-5	484-15
24	.005		22-1448	TC-5	484-15
25	.005		22-1448	TC-5	484-15
26	.005		22-1448	TC-5	484-15

CONTROLS

ITEM No.	RATING	REPLACEMENT DATA			INSTALLATION NOTES
		FORD PART No.	MALLORY PART No.	CLAROSTAT PART No.	
27A	1.5 Meg. 1				Tone Control - See Note Volume Control - See Note On/Off Switch on Volume Control-500
27B	500KΩ				
28	800Ω	63-1379			Sensitivity Control

Note: Tone and Volume Controls ganged together and operated by concentric shafts.

RESISTORS

ITEM No.	RATING	REPLACEMENT DATA			IDENTIFICATION CODES
		FORD PART No.	IRC PART No.	SPRAGUE PART No.	
29	330KΩ				
30	18KΩ				
31	330KΩ				
32	68KΩ				
33	15KΩ				
34	10 Meg.				
35	100Ω				
36	1 Meg.				
37	33KΩ				
38	1 Meg.				
39	15 Meg.				
40	22KΩ				
41	330KΩ				

PARTS LIST AND DESCRIPTIONS (Continued)

RESISTORS

ITEM No.	RATING	REPLACEMENT DATA			IDENTIFICATION CODES
		FORD PART No.	IRC PART No.	SPRAGUE PART No.	
42	330KΩ				
43	120KΩ				
44	270Ω				
45	47KΩ				
46	82Ω				
47	82Ω				
48	1800Ω				

Note 1 - Some Models use a 120Ω resistor in this application.

VIBRATOR

ITEM No.	TYPE	REPLACEMENT DATA			INSTALLATION NOTES
		FREQUENCY	FORD PART No.	MALLORY PART No.	
49	Interrupter	6.3 115 ~	190-20	859	

TRANSFORMER (VIBRATOR)

ITEM No.	RATING	REPLACEMENT DATA			INSTALLATION NOTES
		SEC. 1	SEC. 2	SEC. 3	
50	5.7 VDC 520 VCT				
51	3.3A. 6.048A.				

TRANSFORMER (OUTPUT)

ITEM No.	RATING	REPLACEMENT DATA			INSTALLATION NOTES
		DC RES.	FORD PART No.	STANCOR PART No.	
52	4400Ω	3.1Ω	3702	62	
53	4400Ω	3.1Ω	3702	62	

SPEAKER

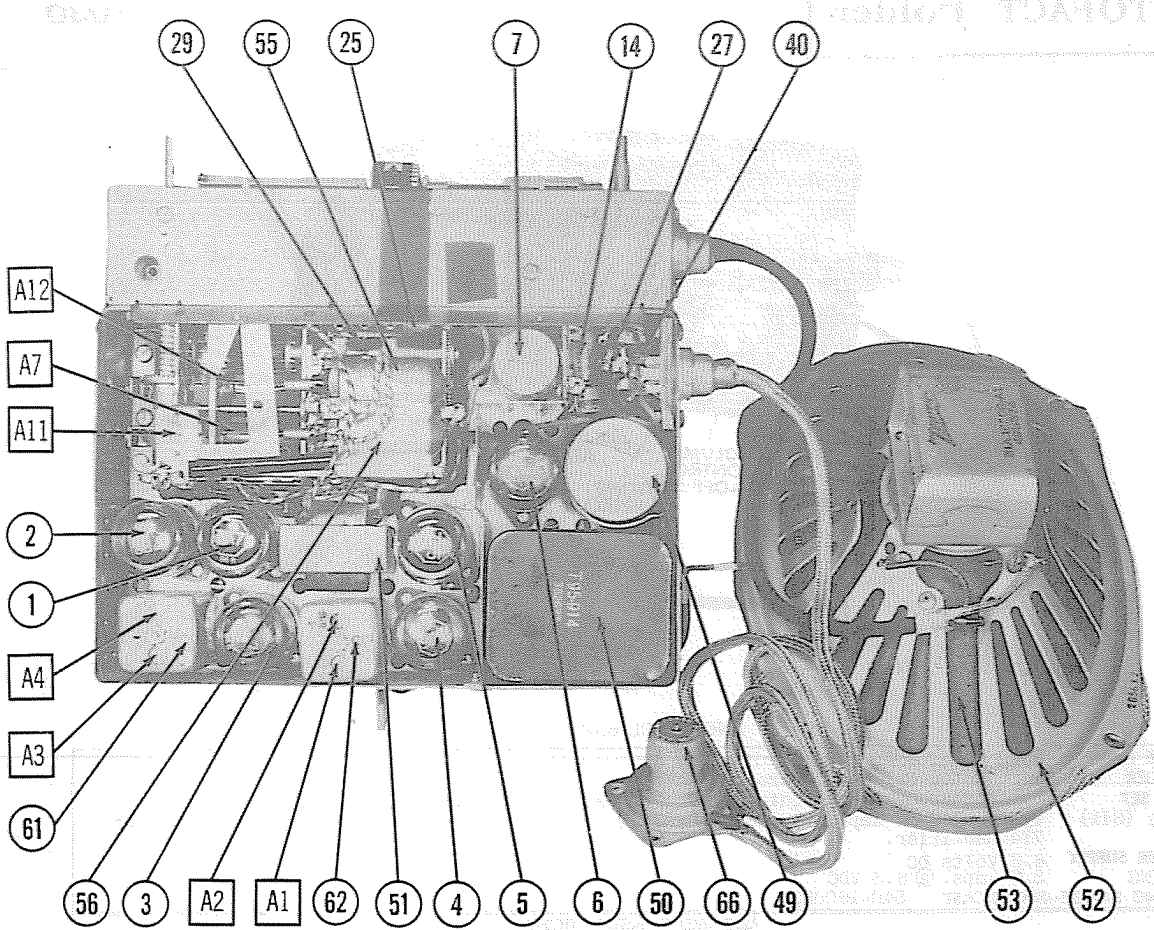
ITEM No.	RATINGS	REPLACEMENT DATA			INSTALLATION NOTES
		FORD PART No.	JENSEN PART No.	WEISSNER PART No.	
54	Ant. Choke				
55	Preselct				
56	RF Coil				
57	Det. Coil				
58	Osc. Coil				
59	Osc. Padder				
60	Osc. Trimmer				
61	Input IF				
62	Output IF				
63	"A" Choke				
64	Vib. Choke				

R F COILS

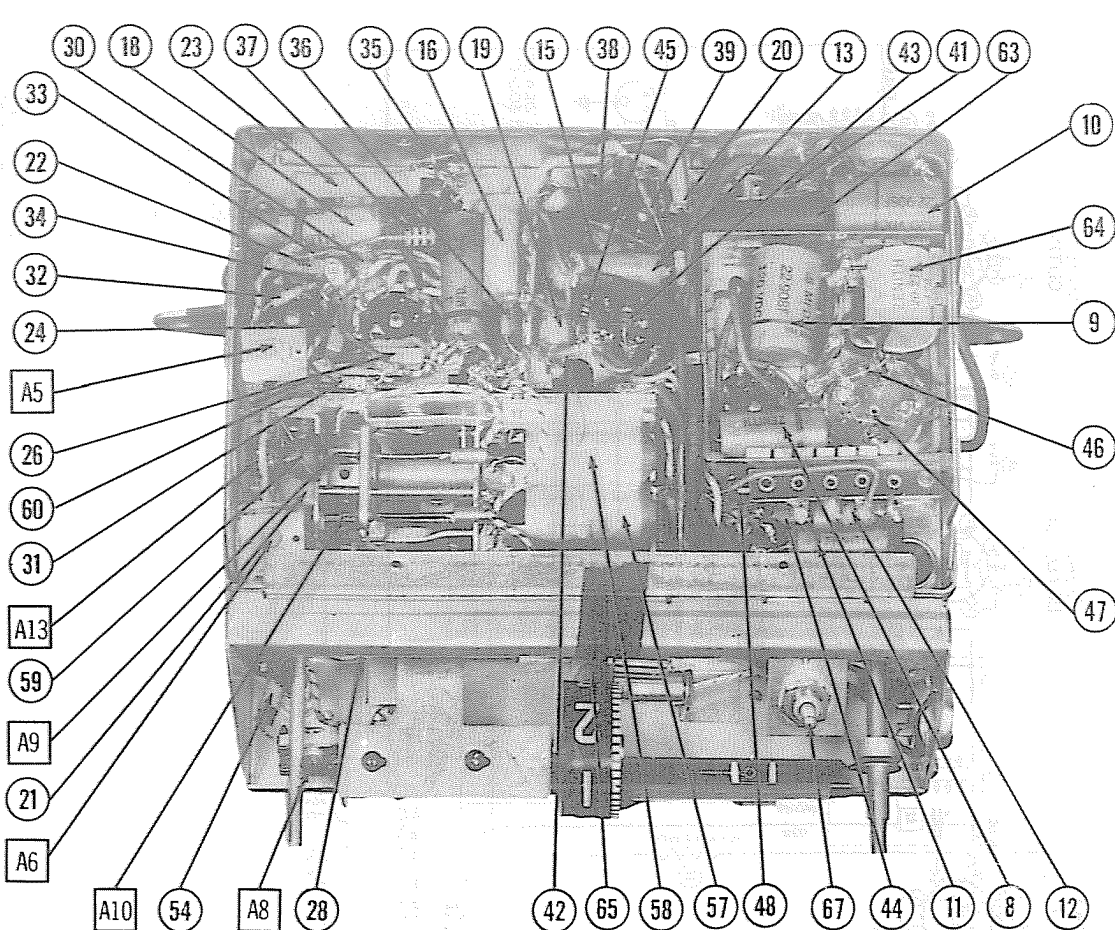
ITEM No.	USE	REPLACEMENT DATA			INSTALLATION NOTES
		FORD PART No.	JENSEN PART No.	WEISSNER PART No.	
54	Ant. Choke				
55	Preselct				
56	RF Coil				
57	Det. Coil				
58	Osc. Coil				
59	Osc. Padder				
60	Osc. Trimmer				
61	Input IF				
62	Output IF				
63	"A" Choke				
64	Vib. Choke				

DIAL LIGHT

ITEM No.	BASE TYPE	VOLTS	AMPS.	REPLACEMENT DATA		INSTALLATION NOTES
				BEAD COLOR	FORD PART No.	
65	Bayonet	6-8	0.4	Milite		Type 55



CHASSIS—BOTTOM VIEW



PARTS LIST AND DESCRIPTIONS (Continued)
 RESISTORS

ITEM No.	RATING	REPLACEMENT DATA		IDENTIFICATION CODES	
		FORD PART No.	IRC PART No.		
42	RESISTANCE WATTS				
43	330KΩ	63-1392	BT-330K	Or.-Or.-Yl.	Output Grid
44	120Ω	63-1410	BM-1-120	Br.-Red-Br.	Output Cathode
45	270Ω	63-1417	BT-1-270	Red-Yl.-Br.	Output Cathode-See Note 1
46	470Ω	63-1417	BT-1-47K	Yl.-Yl.-Or.	Tone Compensation
47	82Ω	63-1399	BM-1-82	Gray-Red-Blk.	Hash Suppression
48	1800Ω	63-1398	BT-2-1800	Br.-Gray-Red	Filter

Note 1 - Some Models use a 120Ω resistor in this application.

VIBRATOR

ITEM No.	TYPE	REPLACEMENT DATA		INSTALLATION NOTES	
		FORD PART No.	MALLORY PART No.		
49	Interrupt- or	190-20	859	5301	

TRANSFORMER (VIBRATOR)

ITEM No.	RATING	REPLACEMENT DATA		INSTALLATION NOTES	
		FORD PART No.	STANCOR PART No.	THORDARIN PART No.	
50	5.7 VDC 520 VCT @ 3.3A. @ .048A.	SEC. 3	95-914	T-22R201	†Drill new mounting holes.

TRANSFORMER (OUTPUT)

ITEM No.	RATING	REPLACEMENT DATA		INSTALLATION NOTES	
		FORD PART No.	STANCOR PART No.	THORDARIN PART No.	
51	IMPEDANCE DC RES. PRI. SEC. PRI. SEC.	4400Ω 3.1Ω 370Ω .6Ω	95-915	A-3950* T-22B46*	*Bond mounting tabs down, insert through slots and bond over.

SPEAKER

ITEM No.	RATINGS	REPLACEMENT DATA		INSTALLATION NOTES	
		FORD PART No.	JENSEN PART No.		
52A	FIELD VC IMP. PM 3.6Ω	49-574†			†Some models may use a dynamic speaker with 6V. Field Coil Alternate speaker.
53	CORE DIA. VC DIA. 6-1/8" x 3/4"	49-539			

NOT READILY REPLACABLE-USE COMPLETE SPEAKER UNIT

R F COILS

ITEM No.	USE	DC RES.		REPLACEMENT DATA		INSTALLATION NOTES
		PRI. SEC.		FORD PART No.	MEISSNER PART No.	
54	Ant. Choke	1Ω		S9819		
55	Preselect Coil	14.5Ω		S12060		
56	RF Coil	14Ω		S12060		
57	Det. Coil	13Ω		S12060		
58	Osc. Coil	2.5Ω		S12053		
59	Osc. Padder	4.5Ω		S11231		
60	Osc. Trimmer	1Ω		S11229		
61	Input IF	60Ω		95-916		
62	Output IF	60Ω		95-942		
63	"A" Choke	OR		S11232		
64	Vib. Choke	OR		20-213		

DIAL LIGHT

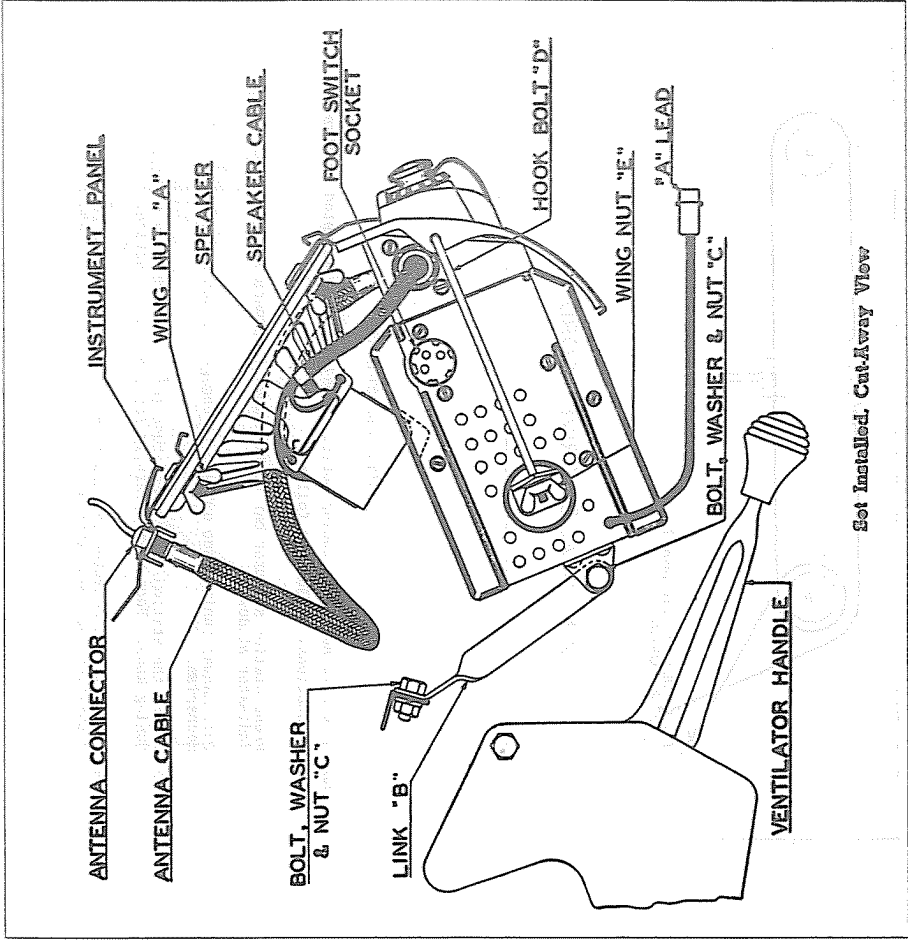
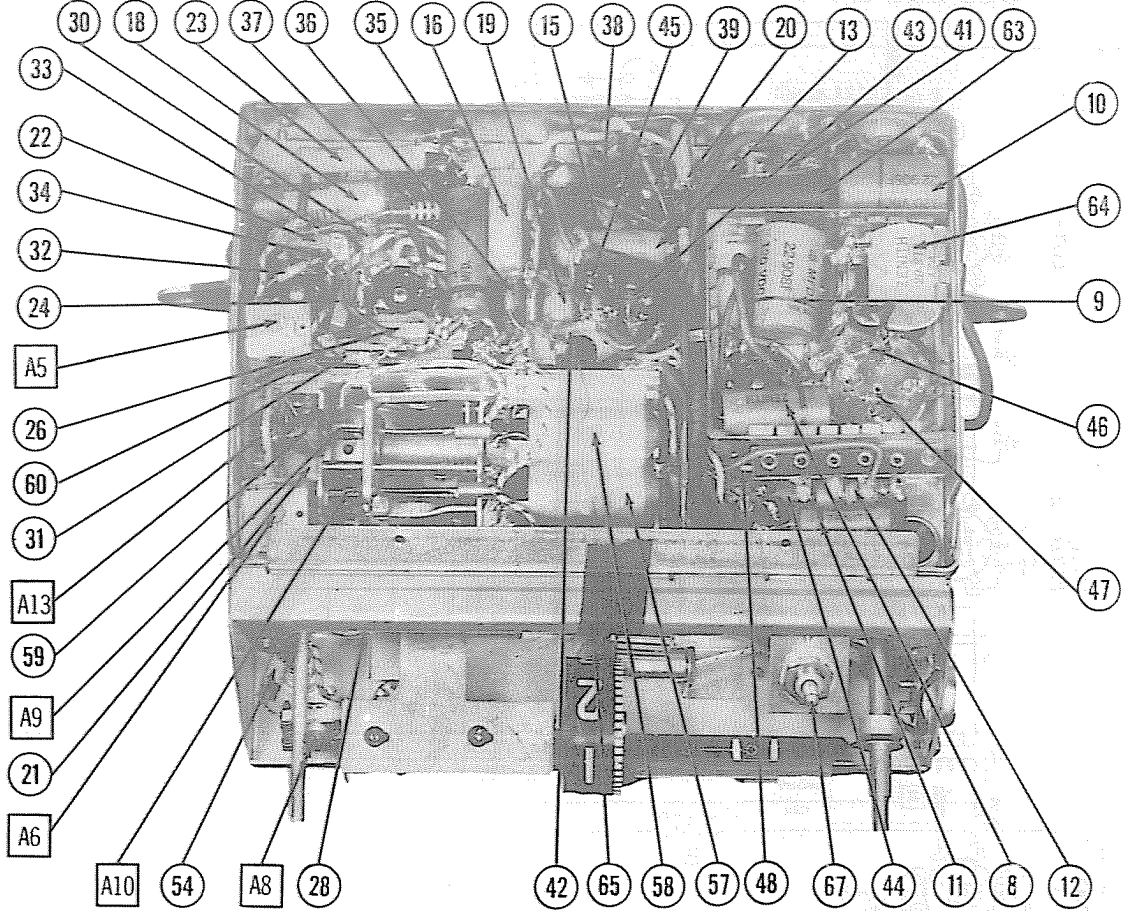
ITEM No.	BASE TYPE	VOLTS	AMPS.	REPLACEMENT DATA		INSTALLATION NOTES
				BEAD COLOR	FORD PART No.	
65	Rayonet	3-8	0.4	White		Type 55

PARTS LIST AND DESCRIPTIONS (Continued)

MISCELLANEOUS

ITEM No.	PART NAME	FORD PART No.	NOTES
66	Foot Switch	S12040	Switch, Cable & Plug Assy.
67	Switch	S11270	Hand Selector & Plating Assy.
A5	Trimmer Cap.	22-1379	Osc. Adj.
A7	"	22-1377	Det. Adj.
A8	"	22-1376	RF Adj.
	"	22-1375	Ant. Adj.
	Dial Scale	26-330	Manual Tuning
	Recutcheon	57-1029	
	Dial Pointer	59-151	
	" Glass	192-82	
	Selector Knob	46-528	
	"	46-582	
	Knob	46-524	Tone Control
	"	46-527	Volume Control
	"	46-525 & 46-526	Tuning & Trim

CHASSIS—BOTTOM VIEW



Set Installed. Cutaway View