

COILS (RF-IF)

ITEM No.	USE	REPLACEMENT DATA					NOTES
		MATSUSHITA PART No.	Merit PART No.	Miller PART No.	Stancor PART No.	Workman TV PART No.	
L1	Loopstick	AM08-F					
L2	Osc.	AO08-E					
L3	1st IF	TRU-2-I1					
L4	2nd IF	TRU-2-I2					
L5	3rd IF	TRU-2-I3					

ITEM No.	TURNS RATIO		REPLACEMENT DATA				NOTES
	PRI.	SEC.	MATSUSHITA		Thordarson		
			PART No.	PART No.	Stancor	Triad PART No.	
T1	1.2	1	T1R-1A		TR-2		

ITEM No.	IMPEDANCE		REPLACEMENT DATA				NOTES
	PRI.	SEC.	MATSUSHITA PART No.	Merit Stancor PART No.	Thordarson PART No.	Triad PART No.	
T2	2000 CT	3-40	(Part of SPI)				

ITEM No.	TYPE		REPLACEMENT DATA		NOTES
	SIZE	FIELD	QUAM PART No.	QUAM PART No.	
SP1	4"	PM 3-43	P-409RE*	4A07	* Includes T2

ITEM No.	VOLTAGE	MATSUBITA PART No.	REPLACEMENT DATA						NOTES
			BURGESS		EVEREADY		MALLORY		
			"A"	"B"	"A"	"B"	"A"	"B"	
M1	1 1/2V	UM-2	130	655			M-14R		4 Required

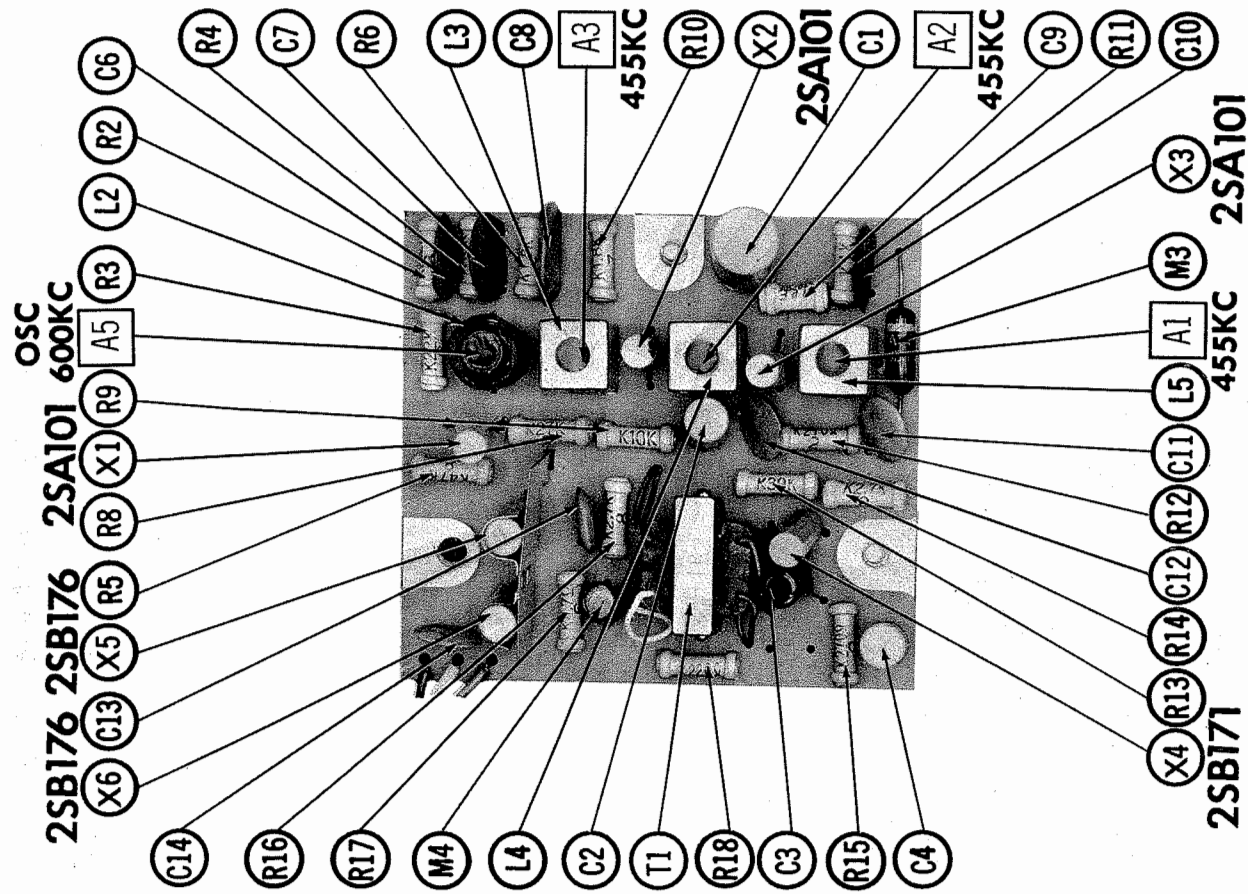
ITEM No.	ORIG. TYPE	REPLACEMENT DATA			NOTES
		MATSUSHITA PART No.	GENERAL ELECTRIC PART No.	RAYTHEON PART No.	
M2	OA70			1N60	AVC Detector Output Bias
M3	OA70			1N60	
M4	MA23B				

ITEM. No.	PART NAME	MATSUBITA PART No.	NOTES
M5	Tuning Cap.	2TC-17-BH3	2 Gang

(When Ordering Cabinets & Cabinet Parts, Specify Model, Chassis & Color)

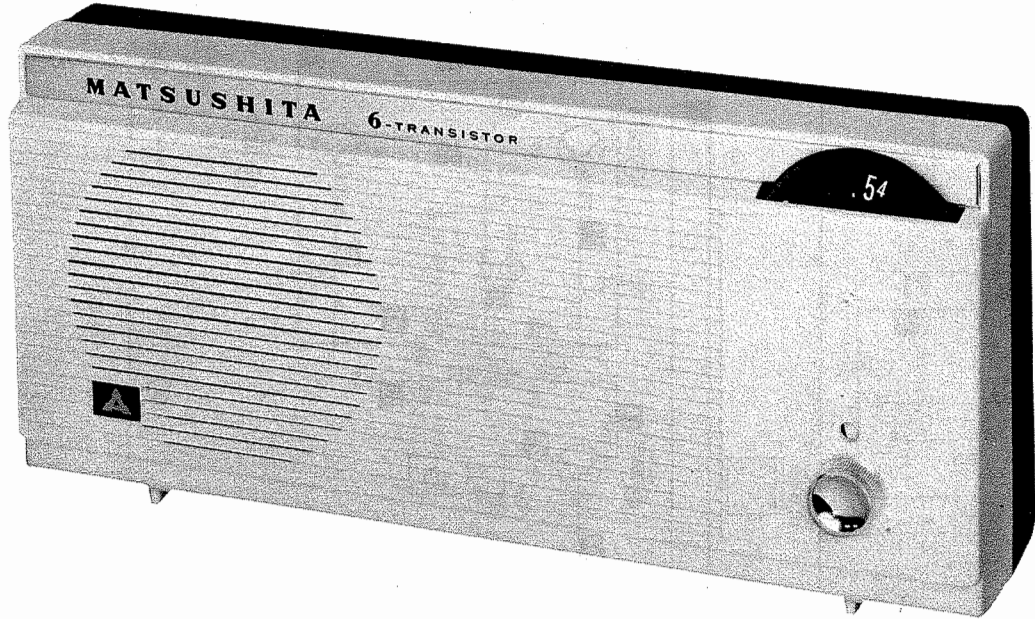
NAME	PART NO.	DESCRIPTION
Knob	#155	Tuning
Knob	#154	Volume

DA



①

1

part
on,
as t
th-

The
not c
uara
ed a

place.
mm
0.,
ent.

able
e a
ams

The
not c
uara
ed a

The
not c
uara
ed a

ting
stitut
by 1
-h11

Repla
ecom
& Co

King
stitute
by H
414

King
stitute
by H
414

King
stitute
by H
414

repla
ecom
& Co

SIGNAL GENERATOR COUPLING	SIGNAL GENERATOR FREQUENCY	RADIO DIAL SETTING	OUTPUT METER	ADJUST	REMARKS
Fashion loop of several turns of wire and radiate signal into loop of receiver.	455KC (400% Mod.)	Tuning gang fully open.	Across voice coll.	A1, A2, A3	Adjust for maximum output.
"	1600KC	1600KC	"	A4	"
"	600KC	600KC	"	A5	"
"	1400KC	1400KC Signal.	"	A6	"
"	600KC	600KC Signal.	"	A7	Adjust for maximum output by moving coil turns along ferrite core. Repeat Steps 2 thru 5.

ist
nstit
ty by
it's h

T
not
guar
an

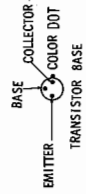
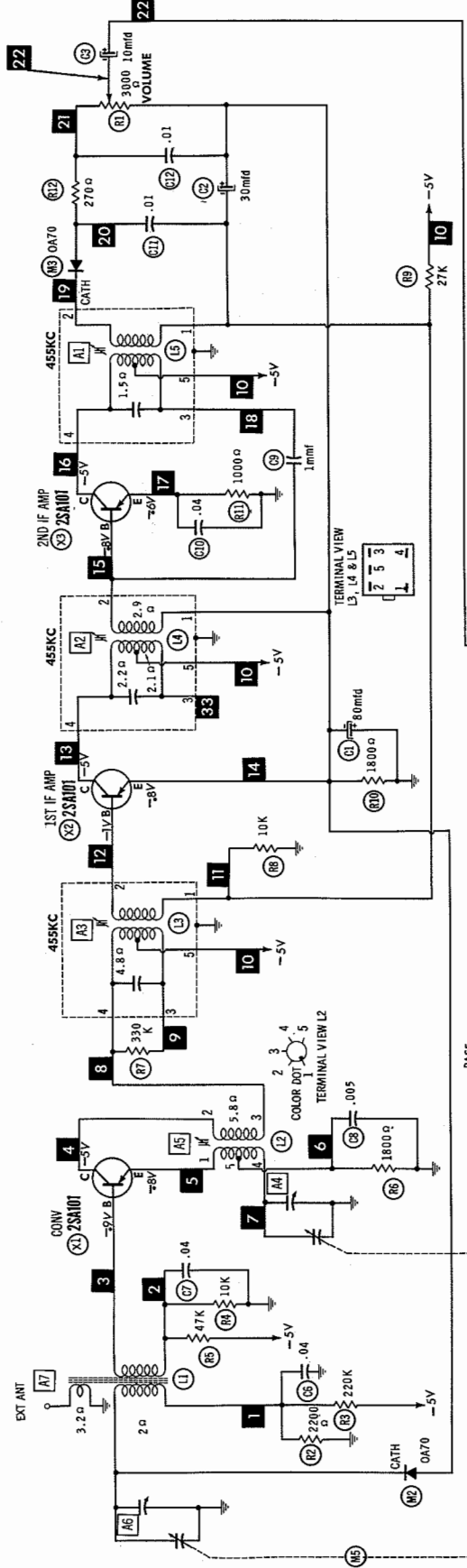
the
du
pi
14

emen
s per
er,
at t

the
d
p

ted.
of ed
ed.
the

FOLDER



RESISTANCE MEASUREMENTS NOT GIVEN BECAUSE OF THE WIDE VARIATION IN INTERNAL TRANSISTOR RESISTANCE.

NUMBERS ASSIGNED TO COILS, SWITCHES, PLUGS, SOCKETS, AND TRANSISTORS ARE TO FACILITATE CIRCUIT TRACING OR COMPONENT REPLACEMENT AND MAY NOT NECESSARILY BE FOUND ON THE UNIT.

SEE PARTS LIST FOR ALTERNATE VALUE OR APPLICATION

DC COIL RESISTANCE VALUES UNDER ONE OHM NOT SHOWN ON SCHEMATIC DIAGRAM

1. DC voltage measurements taken with vacuum tube voltmeter.
2. Socket connections or transistor terminals are shown as bottom views.
3. Measured values are from socket pin or terminal to common ground.
4. Resistance on component values makes possible a variation of $\pm 15\%$ in voltage and resistance readings.
5. Volume control at maximum, no signal applied for voltage measurements.

A PHOTOFACT STANDARD NOTATION SCHEMATIC with CIRCUITRACE

© Howard W. Sams & Co., Inc. 1962

MATSUSHITA or PANASONIC
MODEL DT-495

PARTS LIST AND DESCRIPTIONS WIRING DATA

General-use Unshielded Hook-up Wire Use Belden No. 8630 (Solid) Available in Ten Colors
8524 (Stranded) Available in Ten Colors

TRANSISTORS

ITEM No.	ORIG. TYPE	USE	REPLACEMENT DATA		NOTES
			RCA PART No.	RAYTHEON PART No.	
X1	2SA101	Converter	2N1527		PNP
X2	2SA101	1st IF Amplifier	2N1525		
X3	2SA101	2nd IF Amplifier	2N1525		
X4	2SB171	Driver	2N406		
X5	2SB176	Output	2N408		

ELECTROLYTIC CAPACITORS

ITEM No.	RATING	CAP.	VOLT.	MATSUSHITA PART No.	REPLACEMENT DATA			
					AEROVOX PART No.	CORNELL-DUBIER PART No.	GENERAL ELECTRIC PART No.	SPRAGUE PART No.
C1	80	6		NFA-6V80	ECBP108	MTI-18	TT6X80	MLV100-8
C2	30	3		NFA-3V30	ECBP412	MTI-13	PET130	MLV30-6
C3	10	3		NFA-3V10	ECBP408	MTI-5	PET1340	MLV10-3
C4	30	3		NFA-3V30	ECBP412	MTI-13	PET130	MLV30-6
C5	100	6		NCT-6V100	PTT30	NLW100-12	TT6X100	MLV100-6

FIXED CAPACITORS

ITEM No.	RATING	REMARKS	REPLACEMENT DATA					
			AEROVOX PART No.	CENTRALAB PART No.	CORNELL DUMMER PART No.	ELMENDO PART No.	MALORY PART No.	SPRAGUE PART No.
C6	.04			DA-503	H-0585		TA-150	TCG-550
C7	.04			DA-503	H-0585		TA-150	TCG-550
C8	.005		BPD-005	DM-502	H-05D5	CCD-502	TA-250	5HK-D50
C9	1mm		NFO-S1 1.0	TCZ-1			CNO-510	107CC-V10
C10	.04			DA-503	H-0585		TCG-550	TCG-550
C11	.01			DM-103	H-0581		TA-110	TCG-S10
C12	.01			DM-103	H-0581		TA-110	TCG-S10
C13	.002		BPD-002	DD-202	BYA10D2	CCD-202	GP220	5HK-D20
C14	.002		BPD-002	DD-202	BYA10D2	CCD-202	GP220	5HK-D20
C15	.1 150V		V84C2P1		MP2P1		2WF-P10	2WF-P10

CONTROLS

All wattages 1/2 watt, or less, unless otherwise listed.

ITEM No.	USE	REPLACEMENT DATA			
		RESISTANCE	METSUSHITA PART No.	CENTRALAB PART No.	CTS-IRC PART No.
R1	Volume & Switch	30000	SNVb-24E	B-702, XR-3	

RESISTORS

All wattages 1/2 watt, or less, unless otherwise listed.

ITEM No.	RATING	REPLACEMENT DATA			
		IRC PART No.	WORKMAN TV PART No.	REMARKS	REPLACEMENT DATA
R2	22000				
R3	22K				
R4	10K				
R5	47K				
R6	18000				
R7	330K				
R8	10K				
R9	27K				
R10	18000				

PRINTED BOARD

A Howard W. Sams CIRCUITRACE® Photo

