

PHOTOFACT[®] with

CIRCUITRACE[®]

For Supplier Address See PHOTOFACT Index

NOTE

Repair or adjustment of transmitter circuits must be under supervision of a person with first-or second-class radiotelephone license.

(Refer to FCC Rules and Regulations Part 95, Subpart C & D.)

The frequency of the transmitter should be checked periodically with a secondary frequency standard to insure proper and legal operation.

Best results will be obtained when adjusting the final RF output circuit if the antenna normally used is connected and the chassis is as nearly in the cabinet as possible.

Connect either 50-ohm dummy load or the normally used antenna system.



MODEL 800

MANUFACTURER'S SPECIFICATIONS

GENERAL

Circuitry	4 ICs, 25 Transistors, 21 Diodes, 2 Zenors, 1 Varicap.
Frequency Control	PLL (Phase Lock Loop) Synthesizing System
Channels	40 channels all installed
Mode of Operation	AM
Power Source	117 V 50/60 Hz (AC) 13.8 V (DC)
Frequency Tolerance	0.005%

TRANSMITTER SECTION

RF Output Power	4W (FCC maximum) at 117 V AC or 13.8 V DC
Spurious Rejection	More than 60 dB down
Microphone	Dynamic CB microphone

RECEIVER SECTION

Sensitivity	0.7 μ V for 10 dB S/N
Selectivity	45 dB down
Intermediate Frequency	1st — 10.695 MHz 2nd — 455 kHz
Squelch Range	0.3 μ V — 500 μ V
Delta Tune	About \pm 1 kHz
Audio Output Power	3 W for 8 ohms load (at 10% Dist.)
Speaker (built-in)	3 $\frac{3}{4}$ " x 2" dynamic, 8 ohms

Courtesy of the Manufacturer

HOWARD W. SAMS & CO., INC. Indianapolis, Indiana 46206

© 1978 Howard W. Sams & Co., Inc. Printed in U. S. of America 8CE658

COLT MODELS 290, 800

ALIGNMENT INSTRUCTIONS

CAUTION: Use isolation transformer or observe polarity when connecting test equipment.
 Maintain line voltage at 120V AC. Allow a 15-minute warm-up period.
 Adjustments made with 13.8-volt DC input.
 Connect low sides of test equipment to ground unless specified otherwise.
 Connect 50-ohm dummy load or antenna before keying transmitter.
 Connect microphone.

Before adjustment or alignment of Model 800, adjust RV1a for 13.8 volts at pin 3 of power supply board.

Suggested Alignment Tools: GC ELECTRONICS:

L14, T7 thru T10 5009

L7, L11, L12 9304

L1, L2, L5, T1 thru T6 9440

CT1 5000

SYNTHESIZER ALIGNMENT

TEST EQUIPMENT	TRANSCEIVER	ADJUST	REMARKS
Input of frequency counter to TP1 (Q1, Emitter).	Ch. 19 Delta Tune 0	CT1	Adjust for 10.240MHz \pm 50Hz.
Input of RF VTVM to TP2 (T1, Secondary).	Ch. 19 Delta Tune 0	T1	Adjust for maximum.
Input of DC meter to TP8.	Ch. 1	L1	Adjust for 3.60V \pm .1V.
Input of frequency counter to TP3 (IC3, Pin 1).	Ch. 19, Xmit		Check for 10.695MHz.
Input of RF VTVM to TP4 (IC3, Pin 4).	Ch. 19	L2,T2	Adjust for maximum.
Input of frequency counter to TP4 (IC3, Pin 4).	Ch. 1		Check for 37.660MHz. Check all channels (channel frequency + 10.695MHz = frequency on counter).

RECEIVER ALIGNMENT

Connect an AC VTVM or AF wattmeter across speaker voice coil.
 Adjust volume control to obtain a suitable indication.
 Set generator output low enough to prevent AGC limiting.

TEST EQUIPMENT	TRANSCEIVER	ADJUST	REMARKS
Output of signal generator thru .01uF to TP10. 455kHz, 1000Hz @ 30% modulation.	Ch. 19 Delta Tune 0 Squelch MIN ANL Off NB Off RF Gain Max	T10,T9,T8	Adjust for maximum output.
Output of signal generator thru .01uF to antenna jack. 27.185MHz, 1000Hz @ 30% modulation.	Ch. 19 Delta Tune 0 Squelch MIN ANL Off NB Off RF Gain Max	T7,L14,T6,T5	Adjust for maximum output. If necessary, readjust T8, T9 and T10.

RECEIVER ADJUSTMENTS

Connect an AC VTVM or AF wattmeter across speaker voice coil.
Adjust volume control to obtain a suitable indication.

TEST EQUIPMENT	TRANSCIVER	ADJUST	REMARKS
Output of signal generator thru .01uF to antenna jack. 27.185MHz, 1000Hz @ 30% modulation. Output 1000uV.	Ch. 19 Delta Tune 0 ANL Off NB Off RF Gain Max	RV1b	SQUELCH RANGE Set squelch control VR2 fully clockwise. Adjust RV1b so that squelch just breaks.
Output of signal generator thru .01uF to antenna jack. 27.185MHz, 1000Hz @ 30% modulation. Output 100uV.	Ch. 19 Delta Tune 0 ANL Off NB Off RF Gain Max	RV3	S METER Adjust RV3 for 9 on S scale of meter.

TRANSMITTER ALIGNMENT

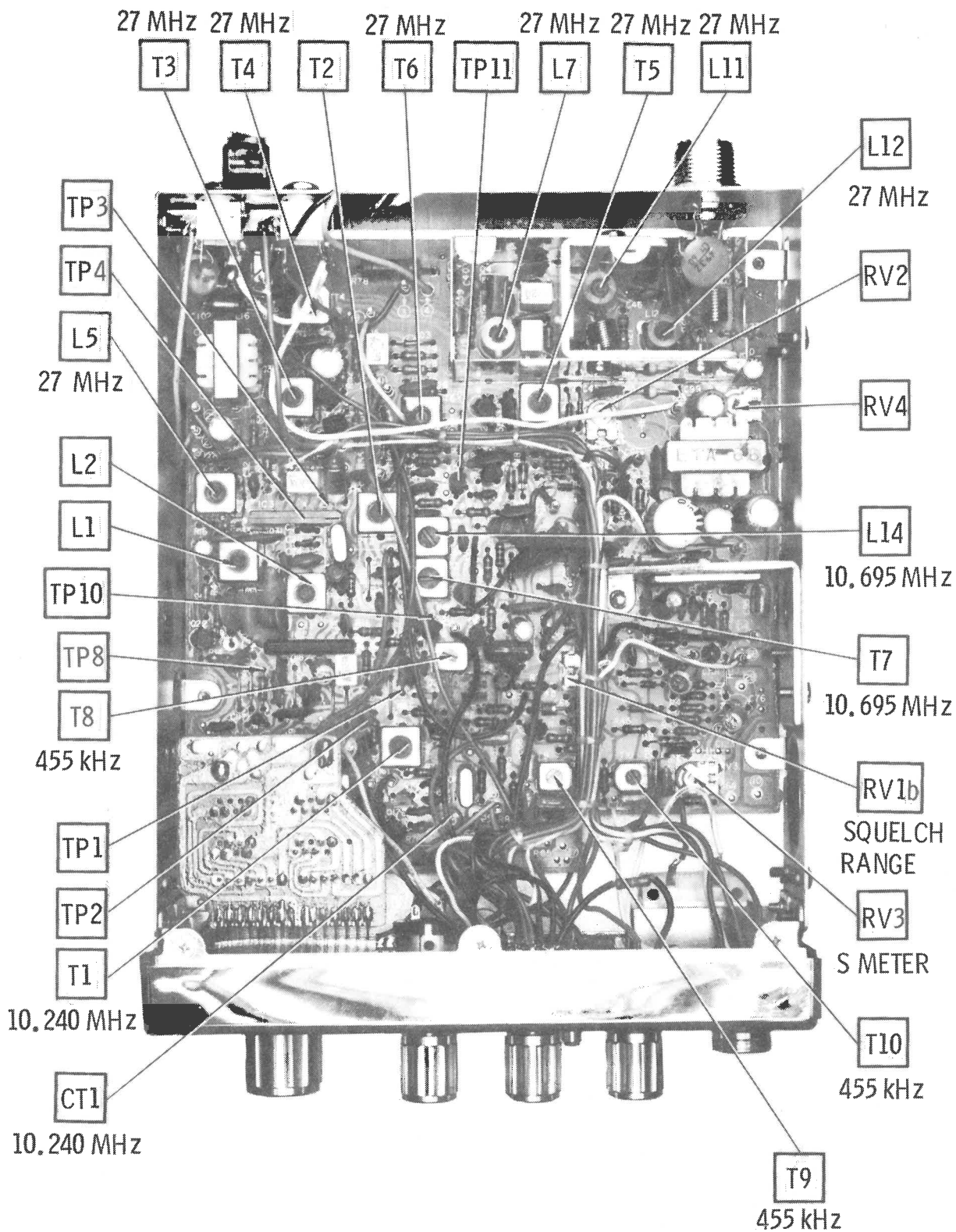
Connect an RF wattmeter and 50-ohm, 25-watt dummy load to antenna connector.
NOTE: Be sure to check transmit frequency and power on all active channels after alignment of transmitter.
See page 4 for channel frequencies.

TEST EQUIPMENT	TRANSCIVER	ADJUST	REMARKS
	Ch. 19	L5,T3,T4, L7,L11,L12	Adjust for maximum.
	Ch. 19	L7	Adjust for 3.8 watts maximum.

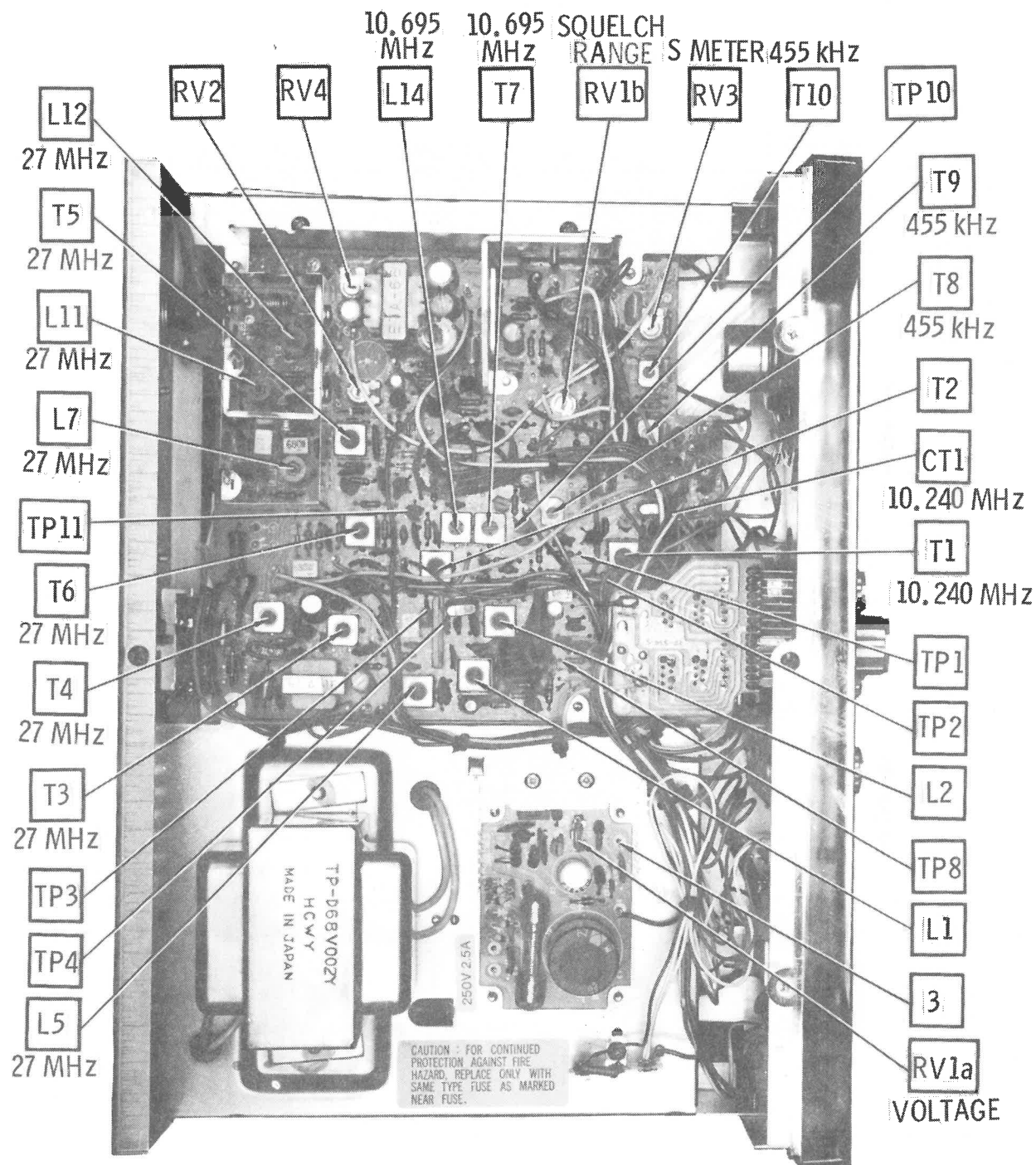
TRANSMITTER ADJUSTMENTS

Connect an RF wattmeter and 50-ohm, 25-watt dummy load to antenna connector.
NOTE: Be sure to check transmit frequency and power on all active channels after adjustments of transmitter.
See page 4 for channel frequencies.

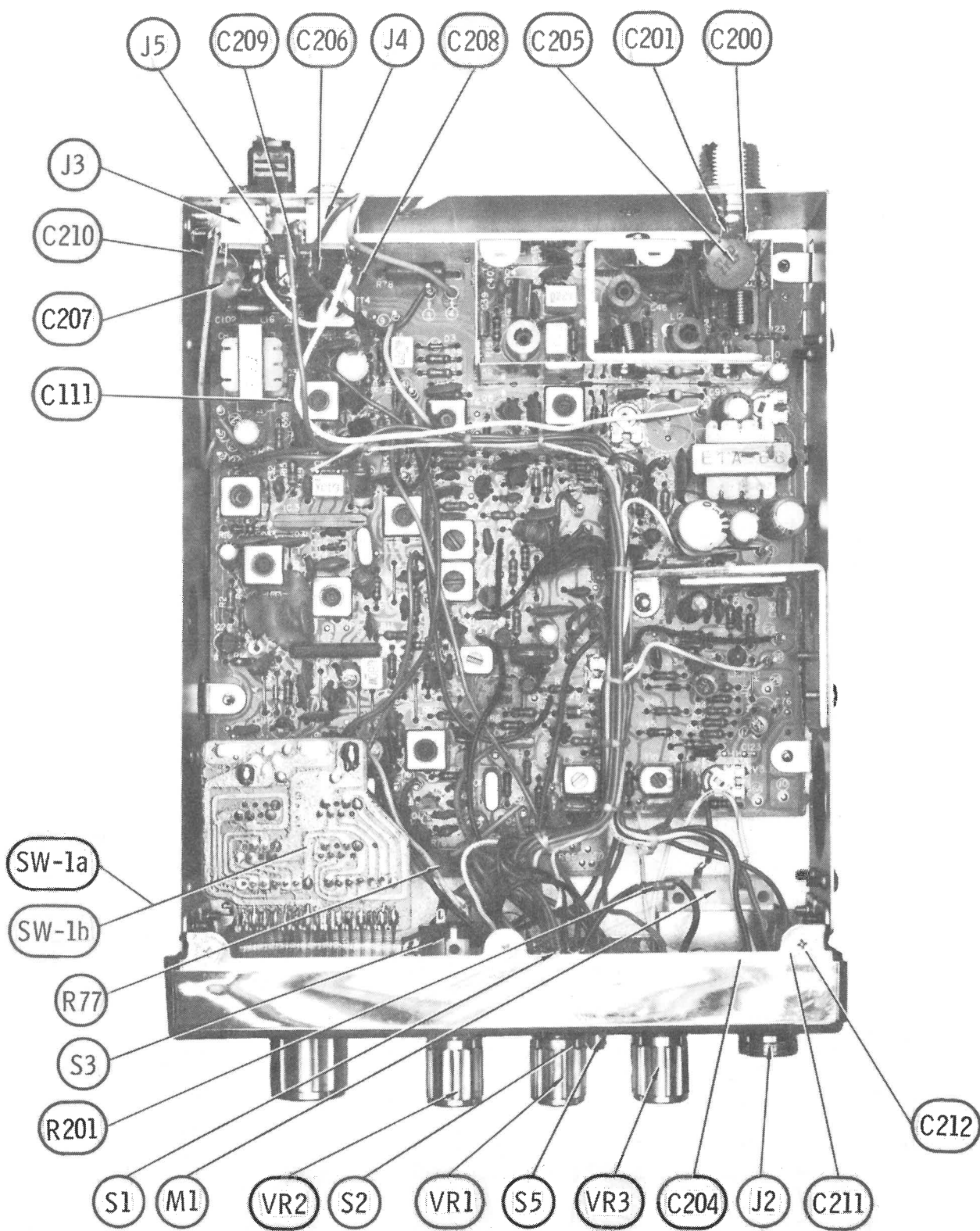
TEST EQUIPMENT	TRANSCIVER	ADJUST	REMARKS
Modulation meter to antenna jack. Inject a 10mV, 1000Hz signal at mic input.	Ch. 19	RV2	AMC Adjust for 80% modulation.
	Ch. 19	RV4	RF PANEL METER Adjust RV4 so that RF panel meter agrees with RF wattmeter.



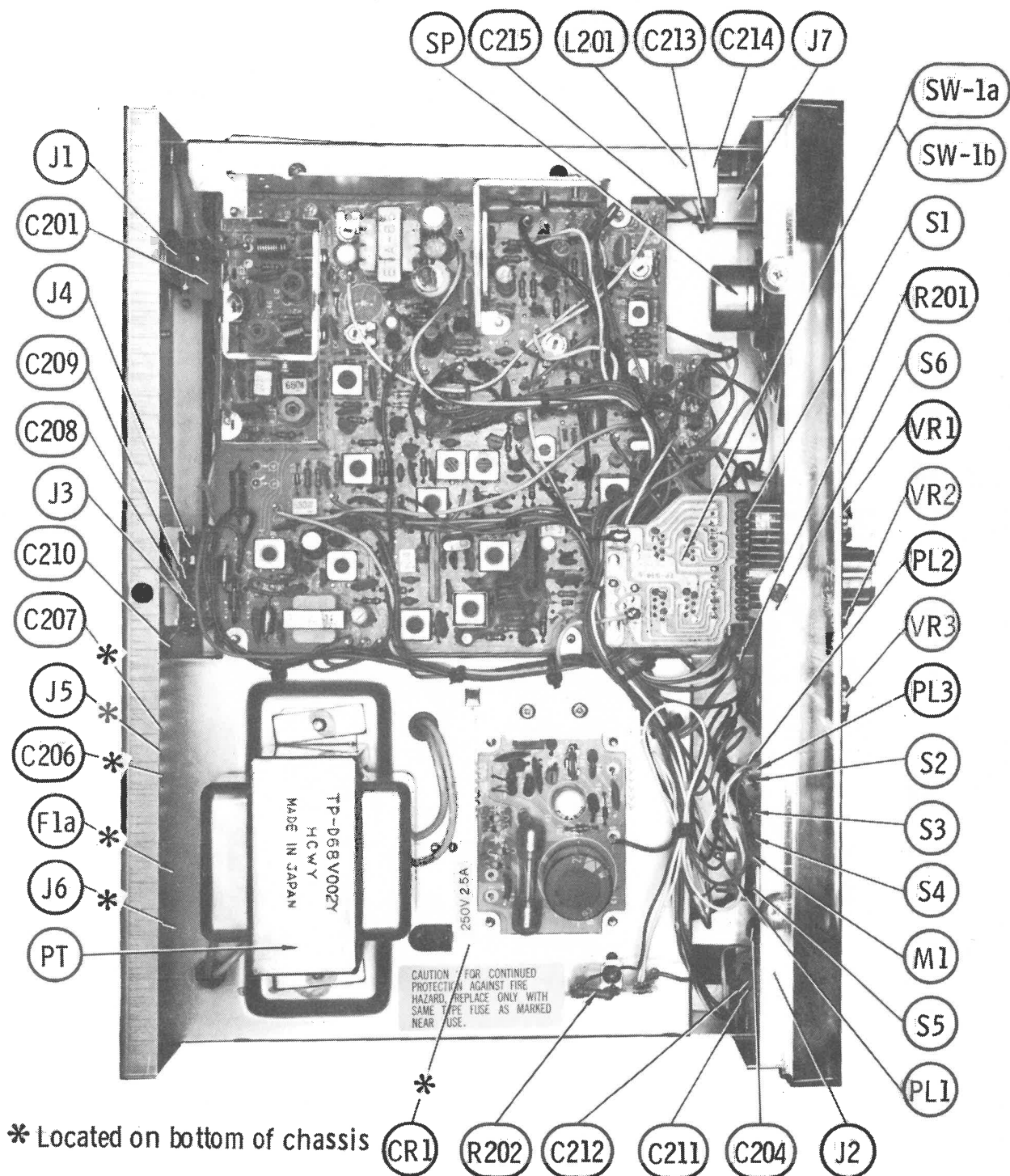
CHASSIS-BOTTOM (MODEL 290)



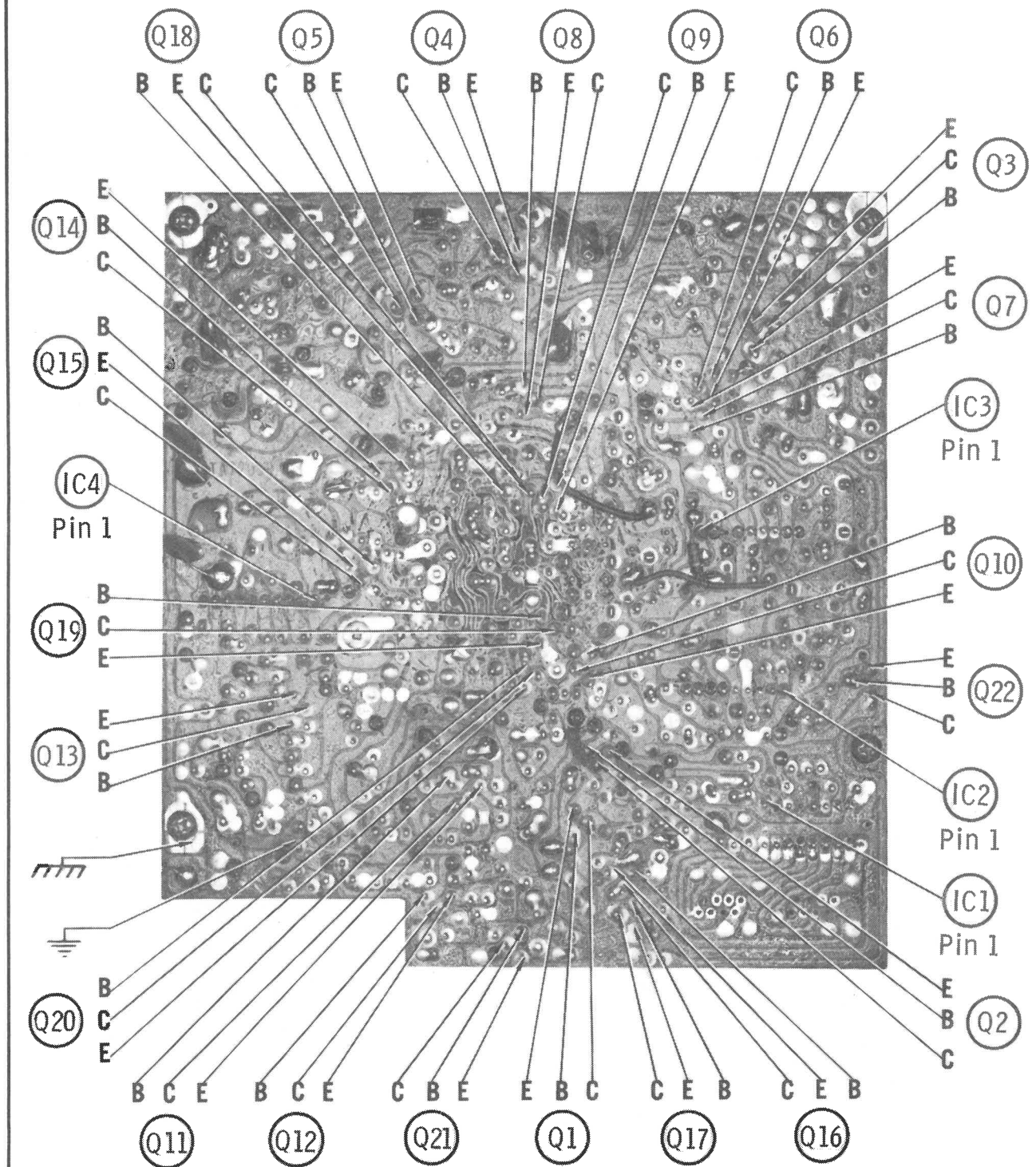
CHASSIS-BOTTOM (MODEL 800)



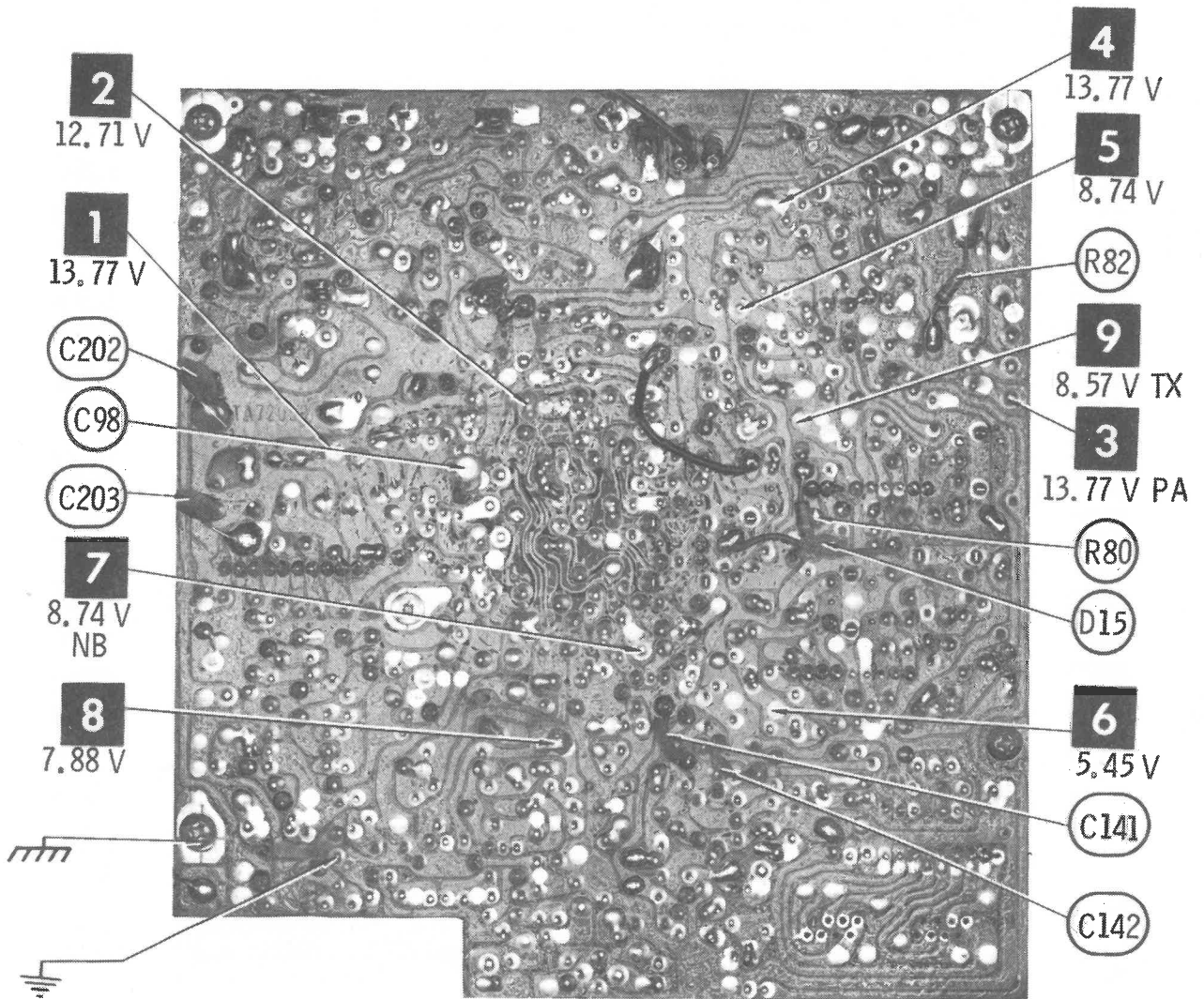
CHASSIS-BOTTOM (MODEL 290)



CHASSIS-BOTTOM (MODEL 800)

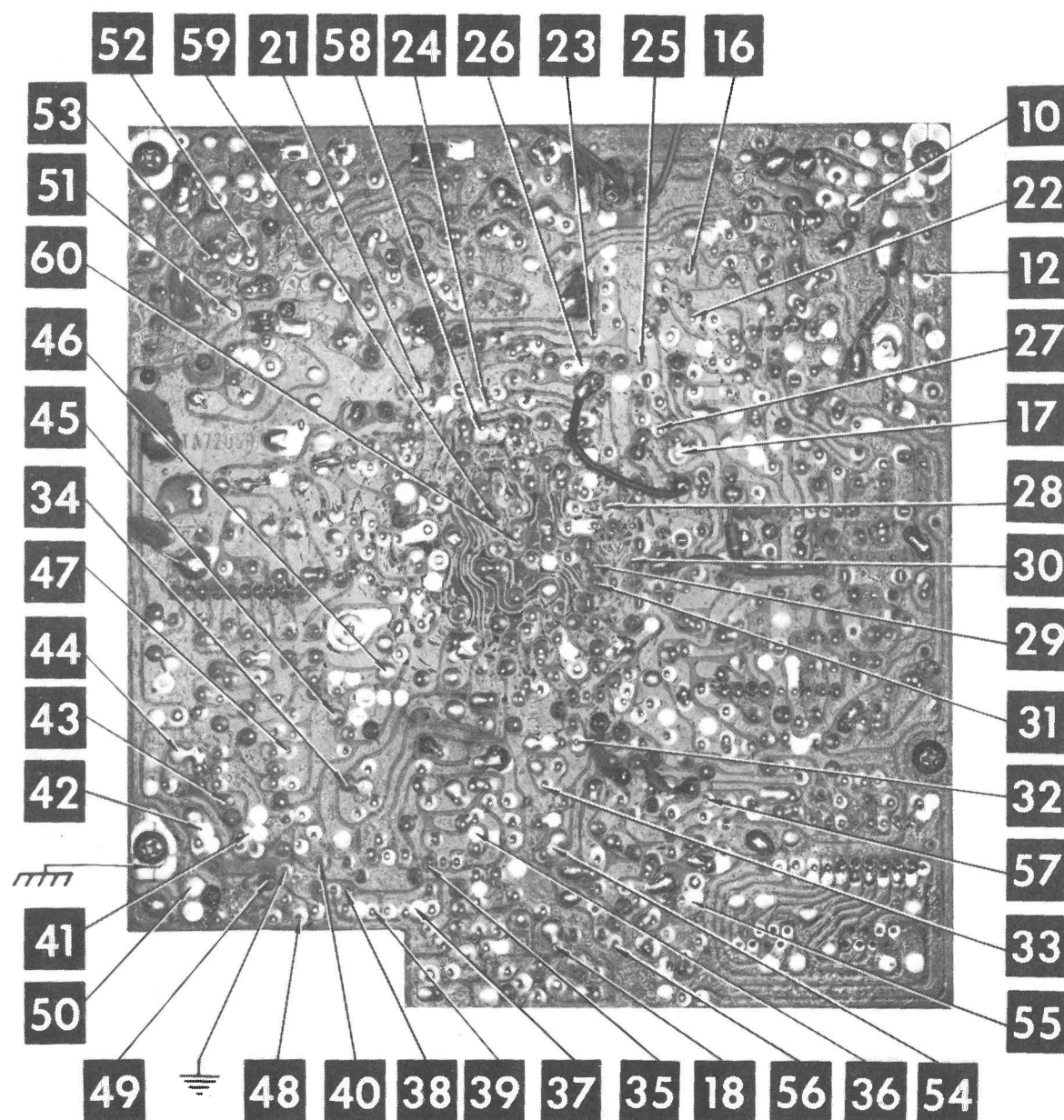


MAIN BOARD

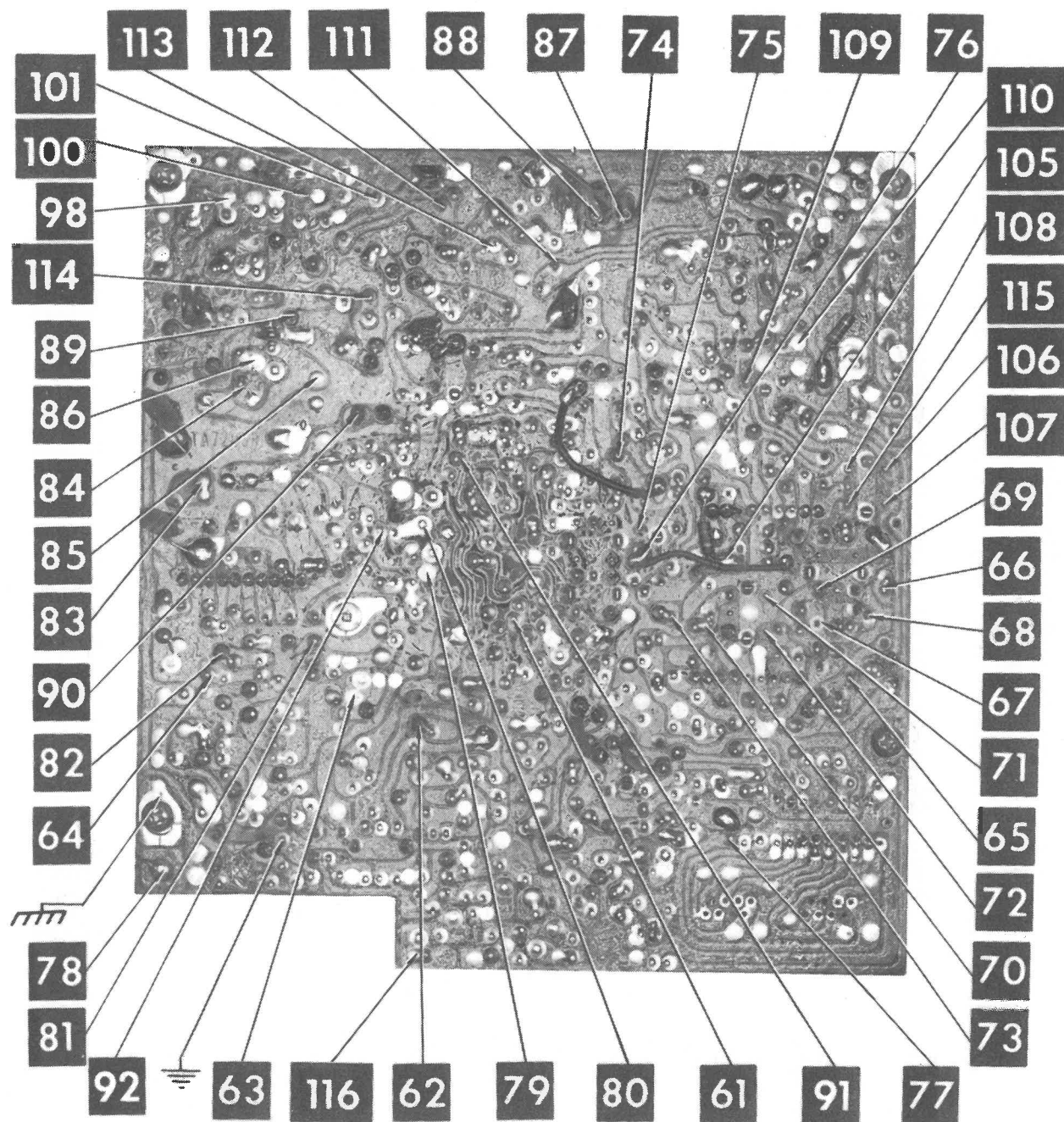


COLT MODELS 290, 800

MAIN BOARD

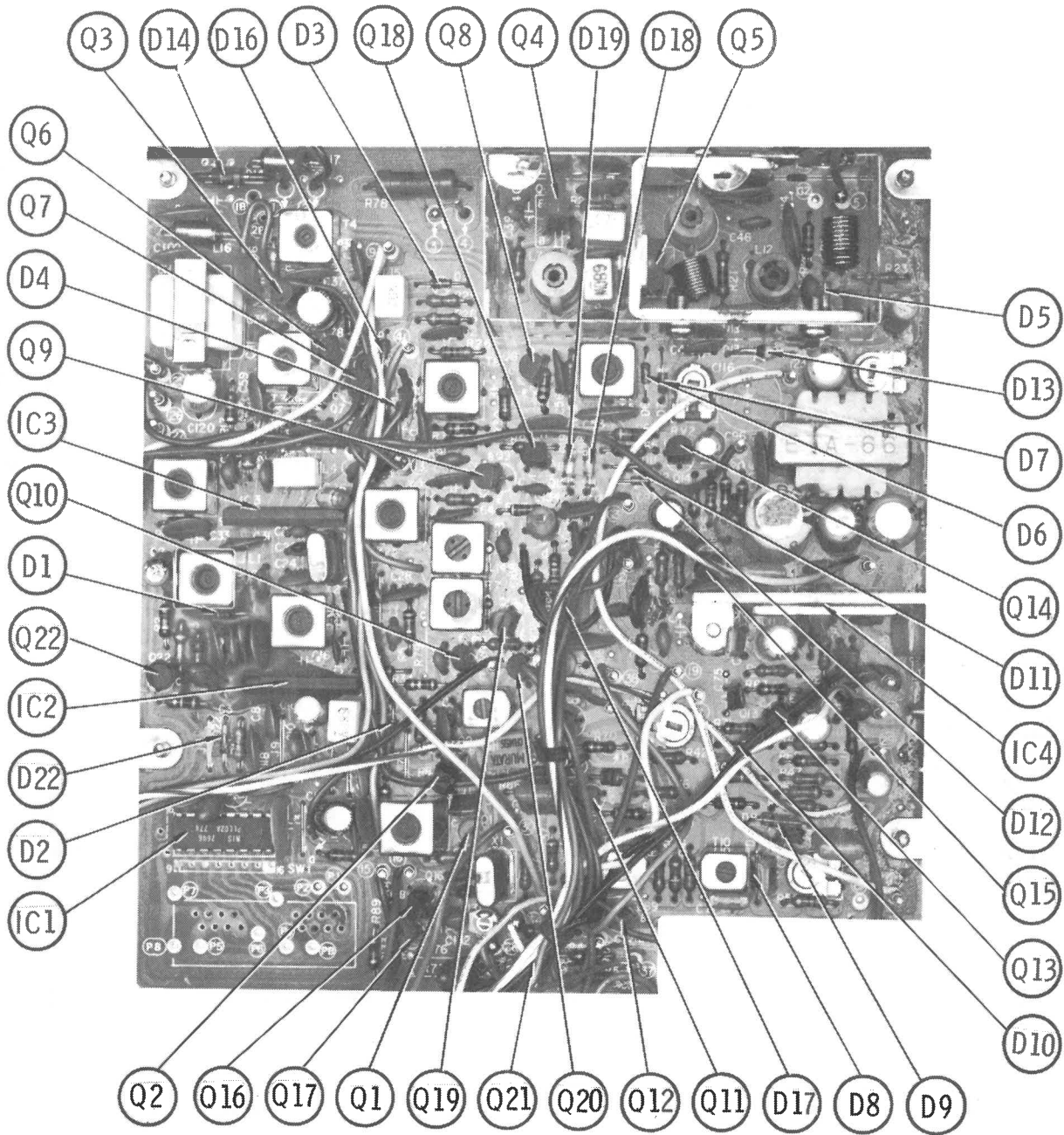


MAIN BOARD

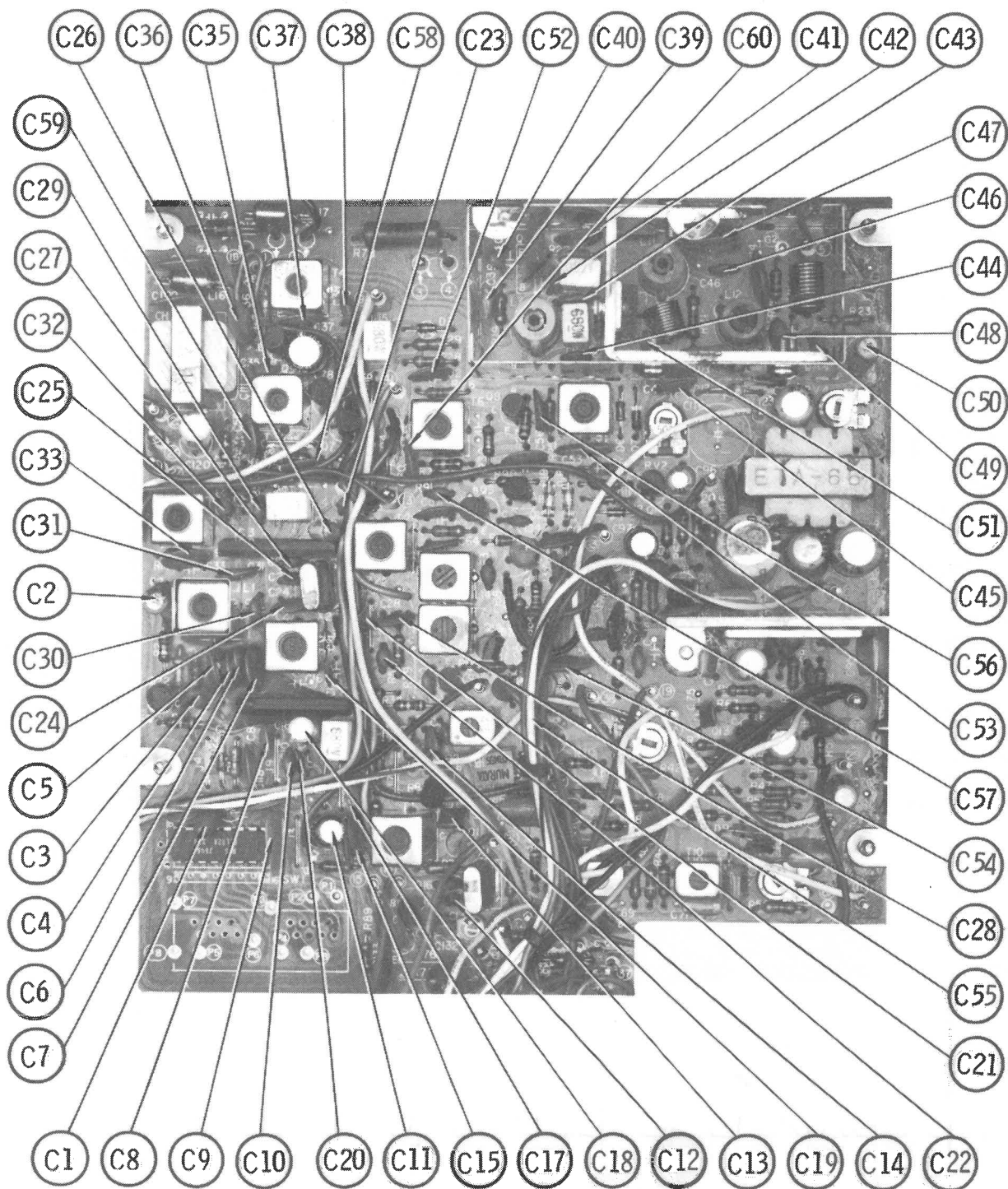


COLT MODELS 290, 800

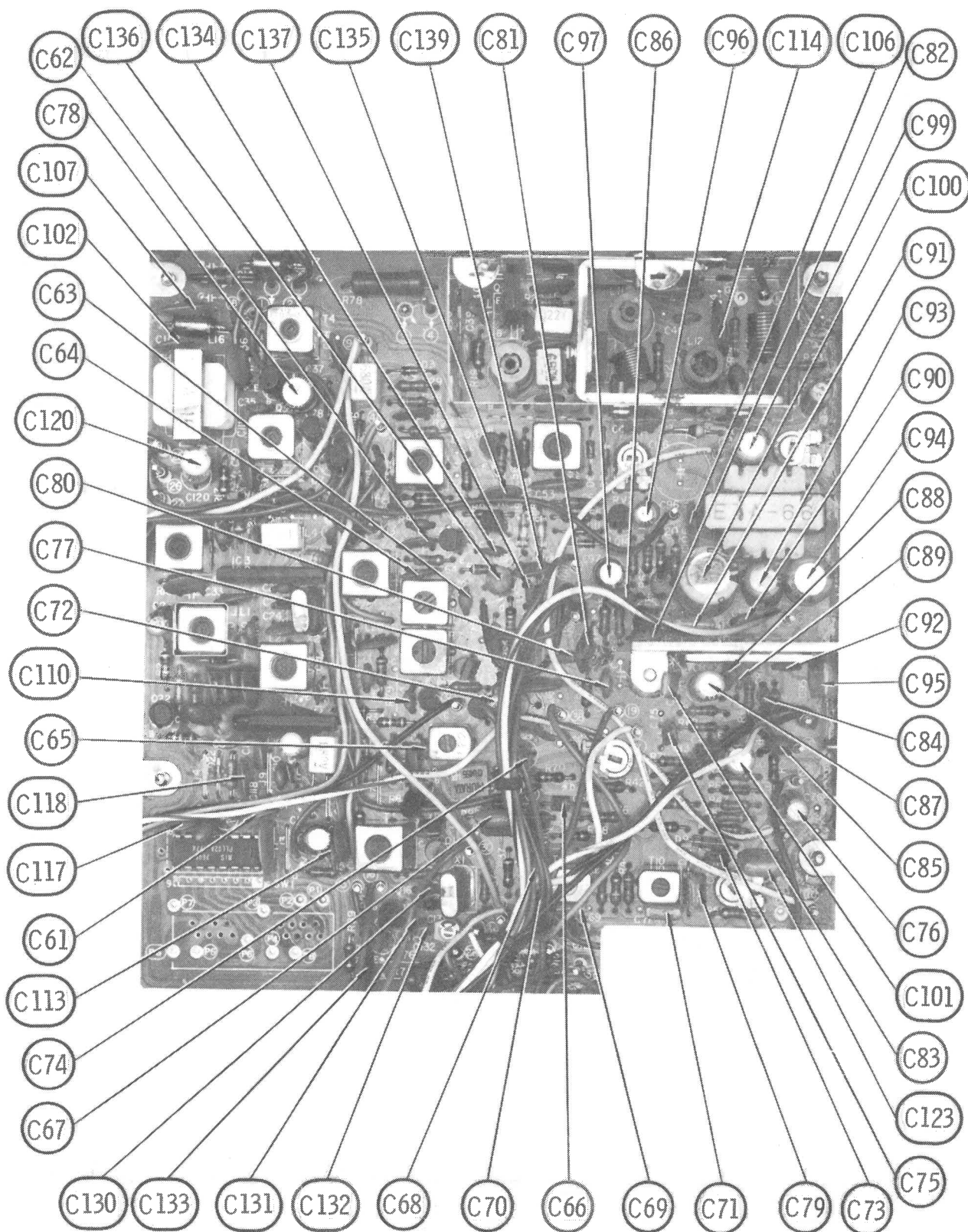
MAIN BOARD



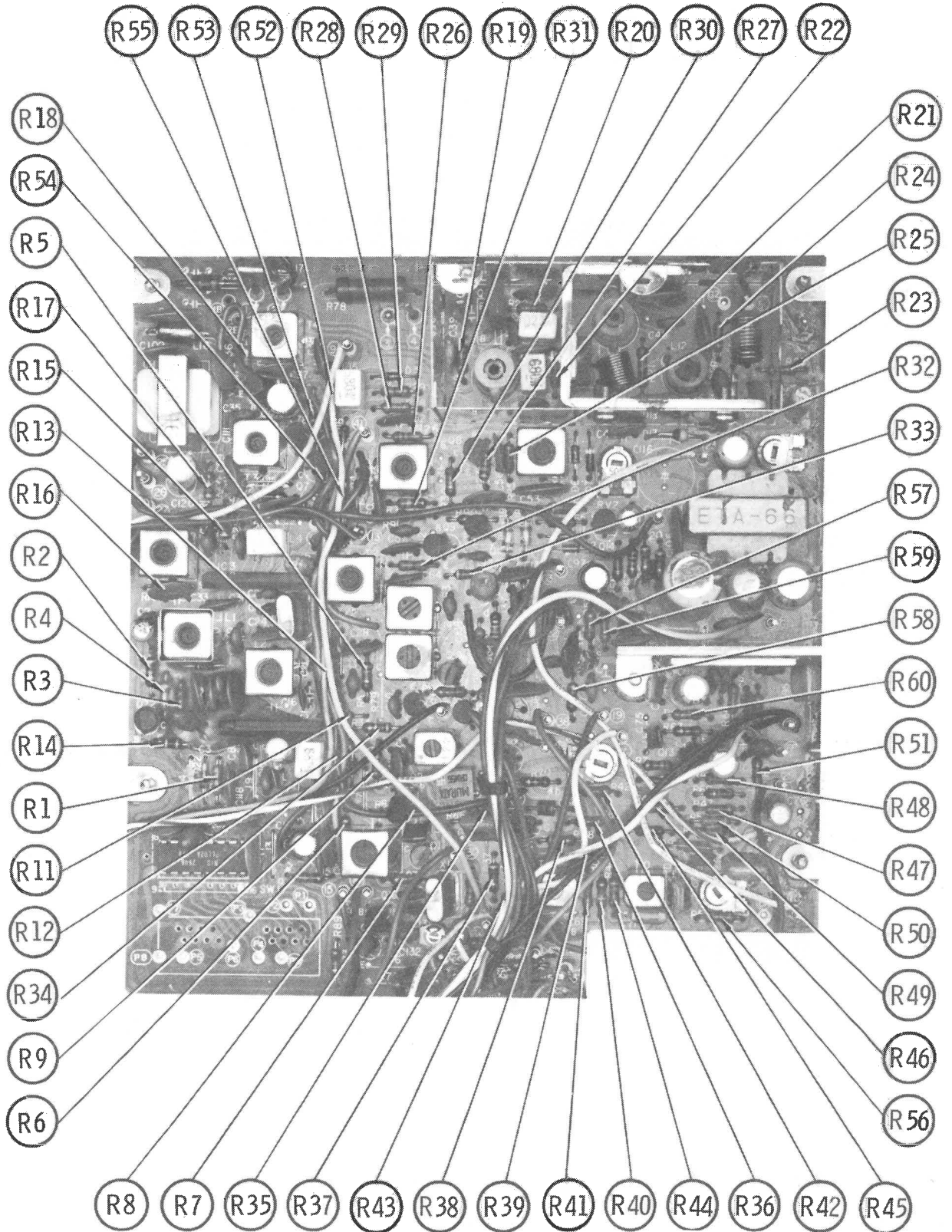
MAIN BOARD

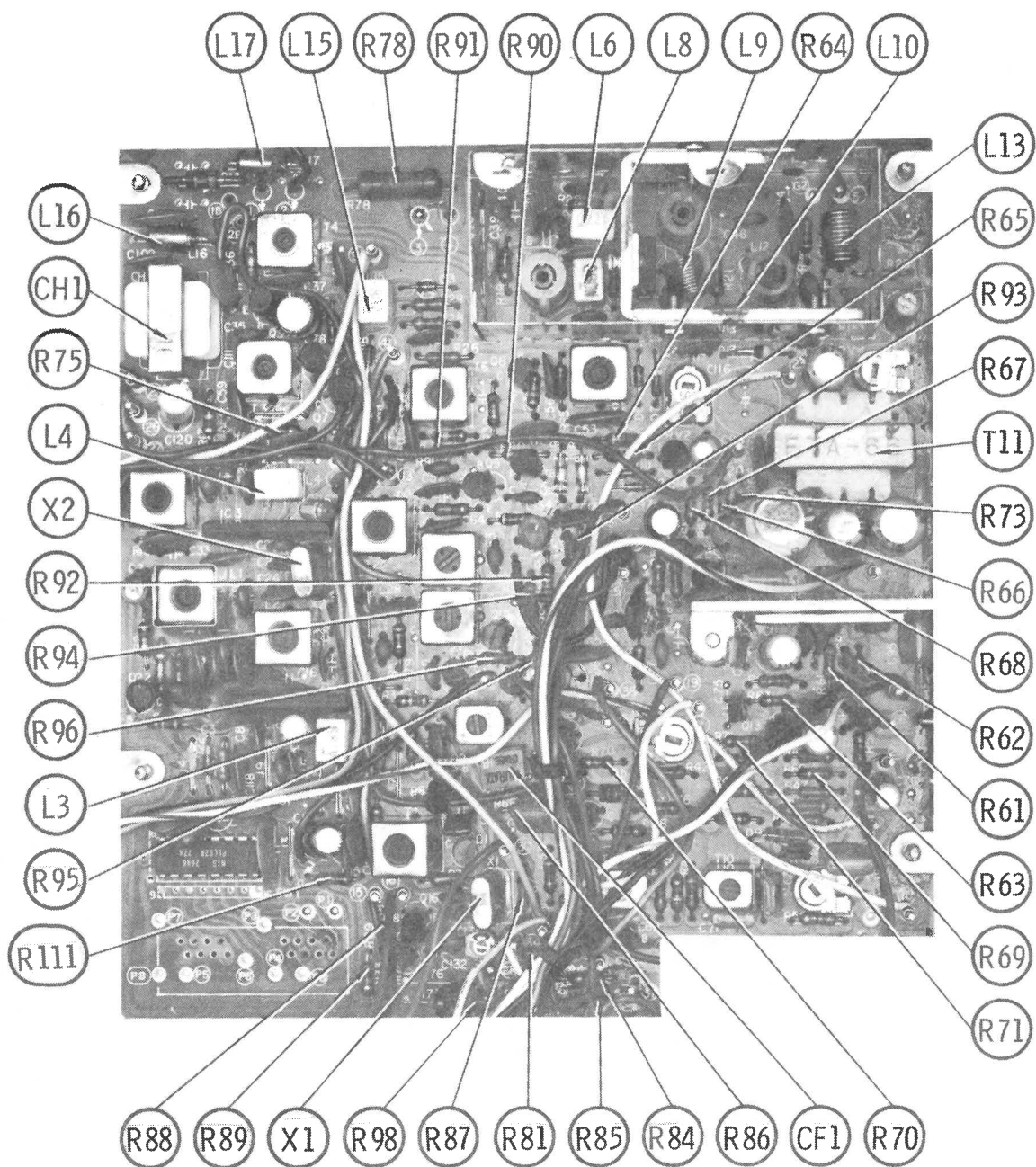


MAIN BOARD

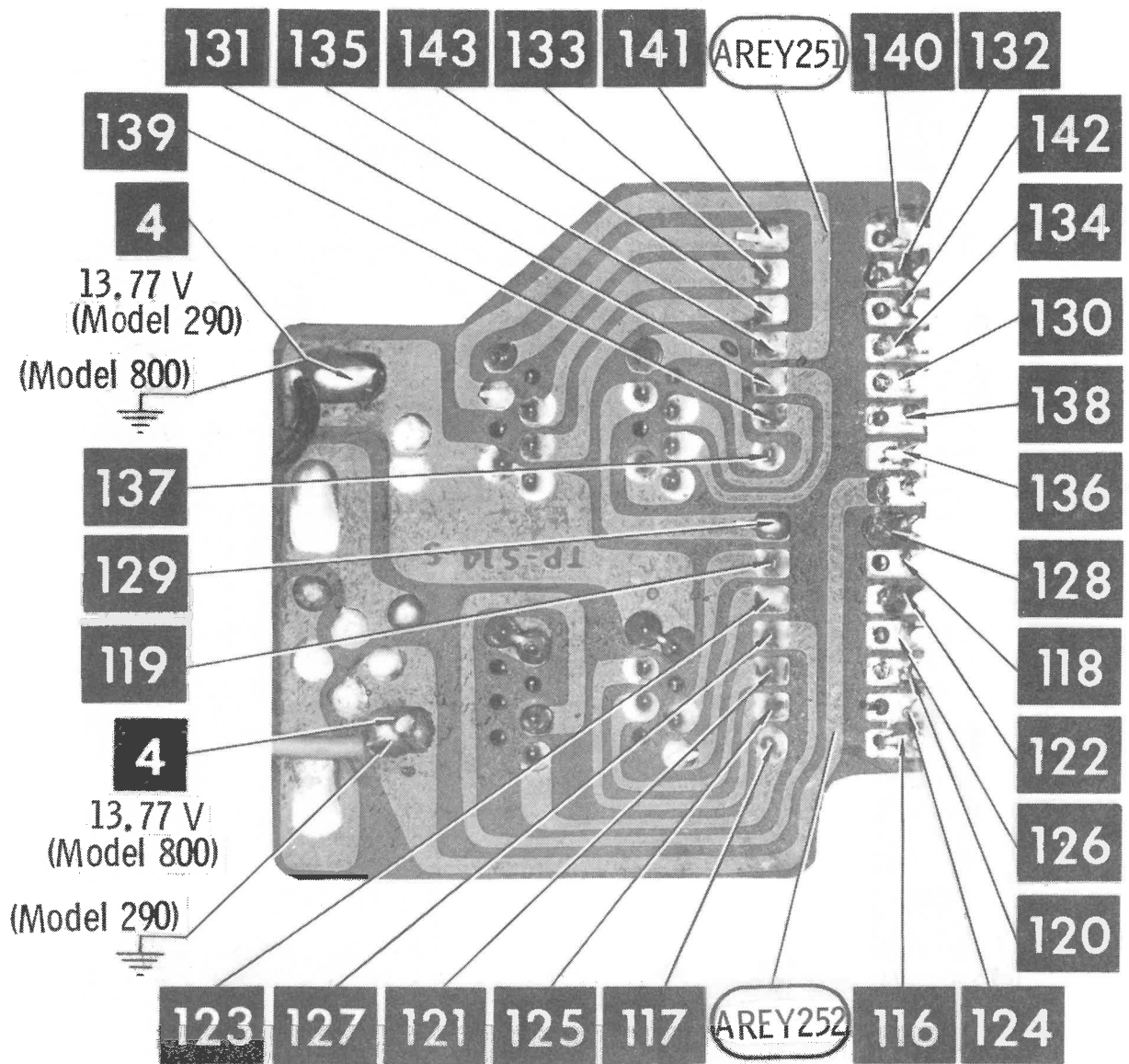


MA IN BOARD



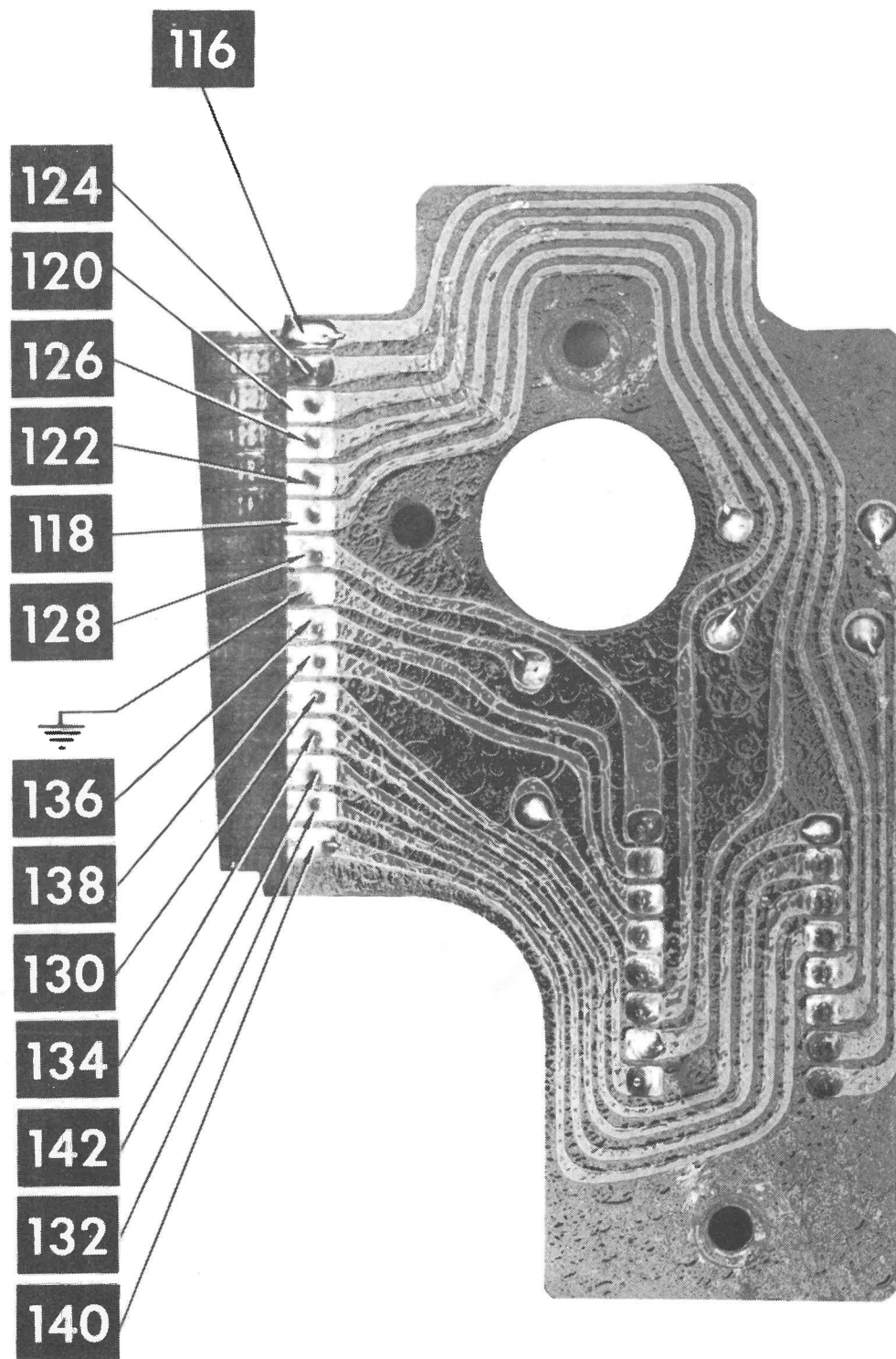


MAIN BOARD

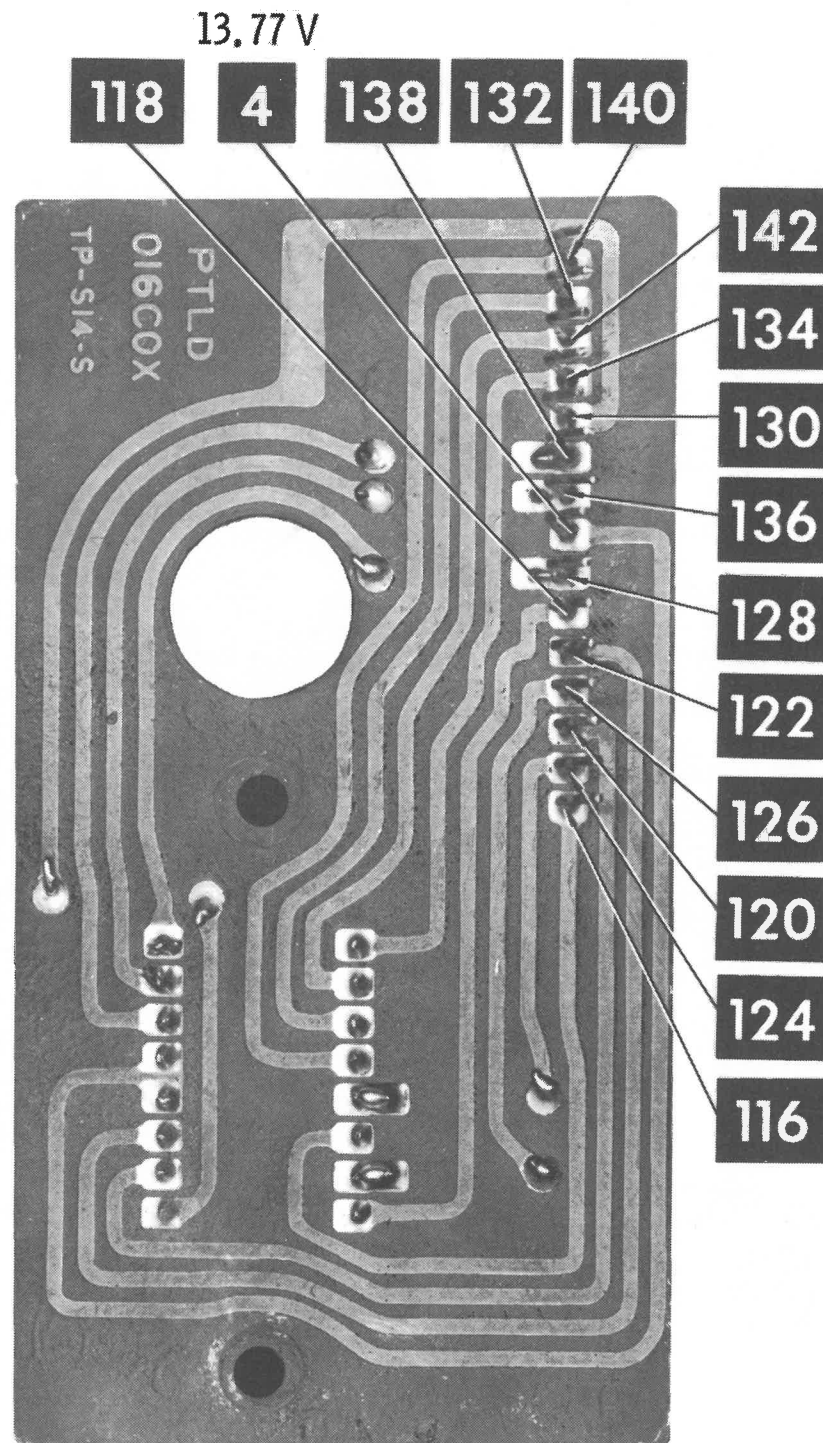


COLT MODELS 290, 800

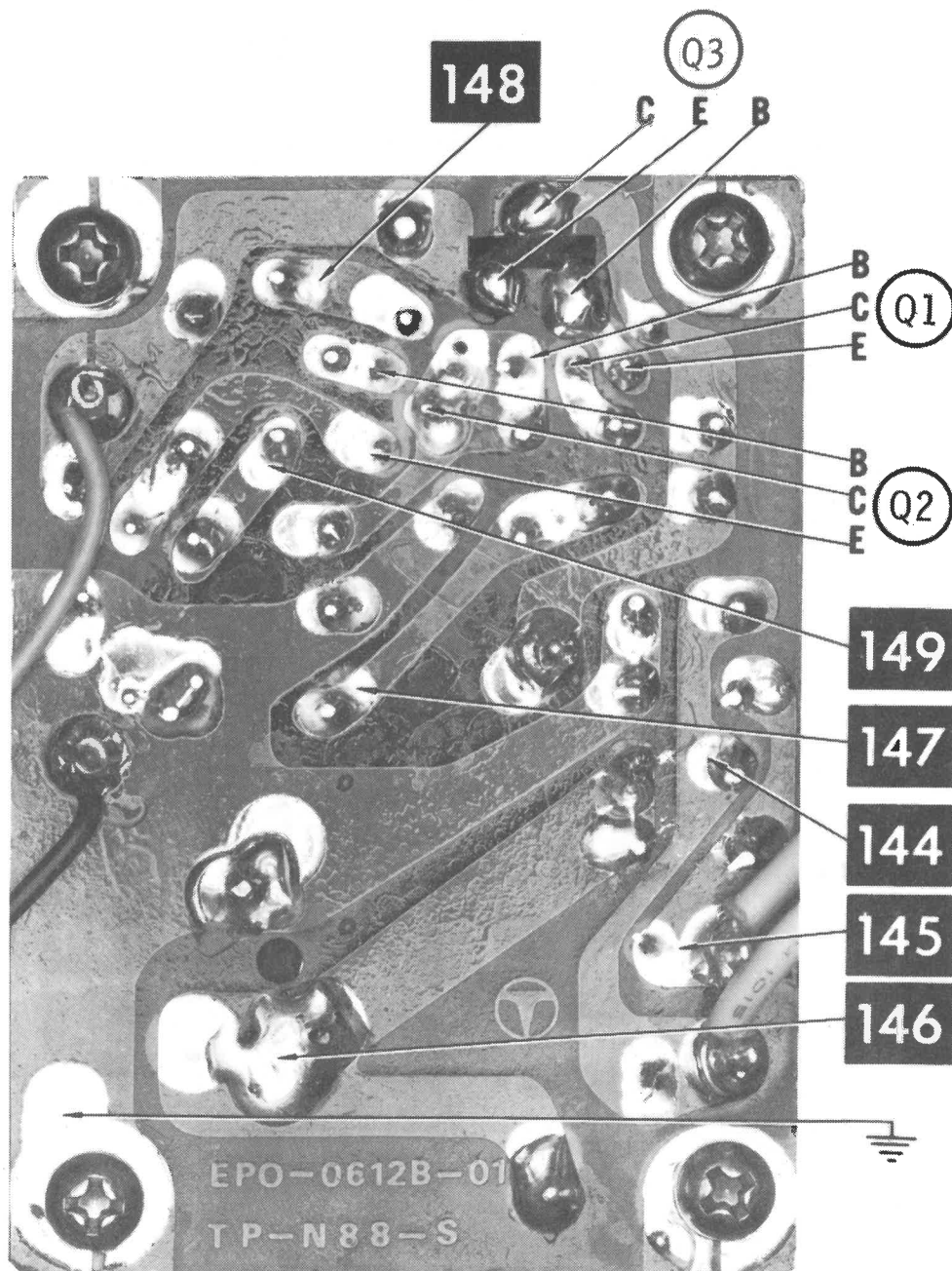
CH. SELECTOR BOARD



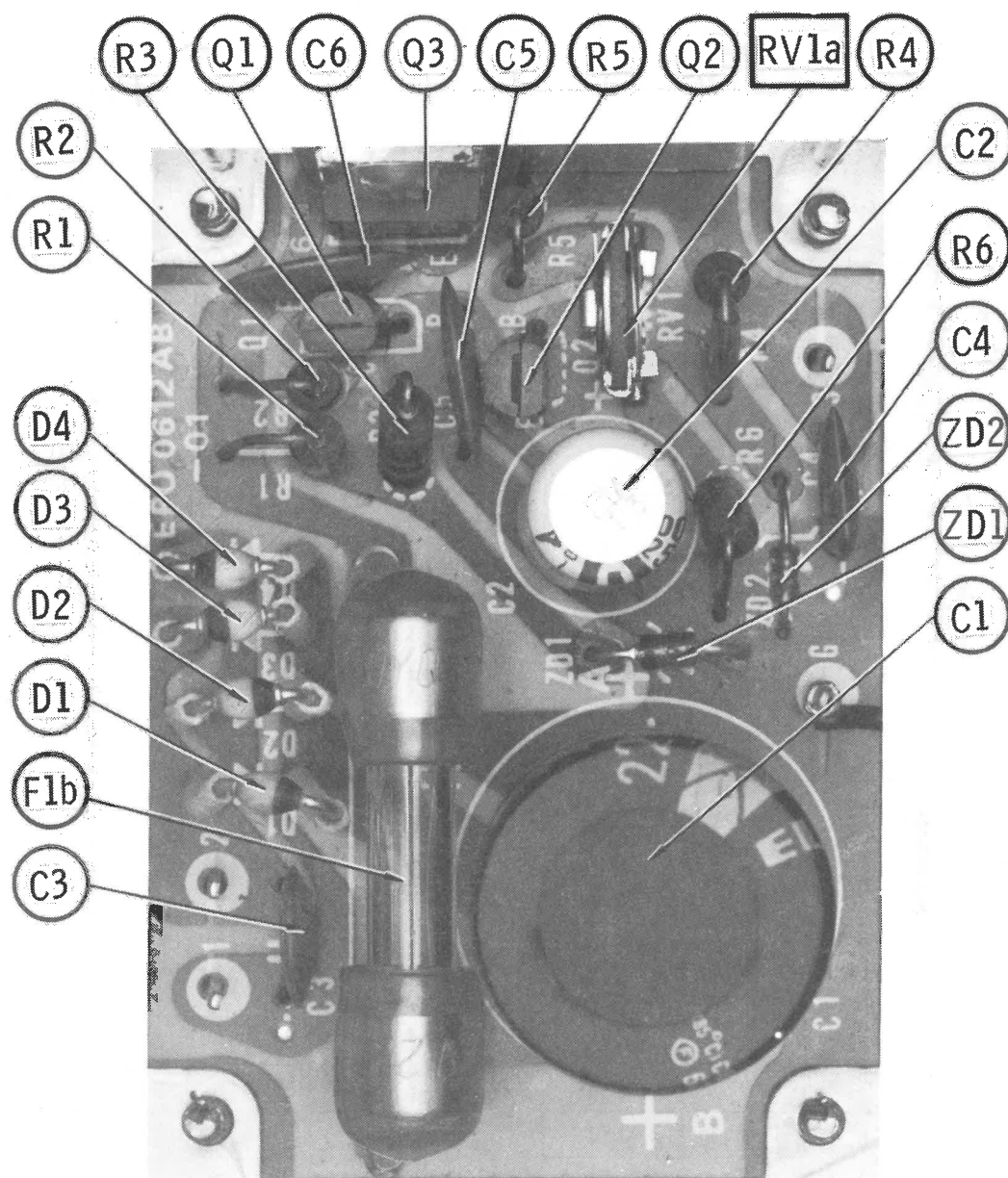
LED BOARD (MODEL 290)



LED BOARD (MODEL 800)



POWER SUPPLY BOARD

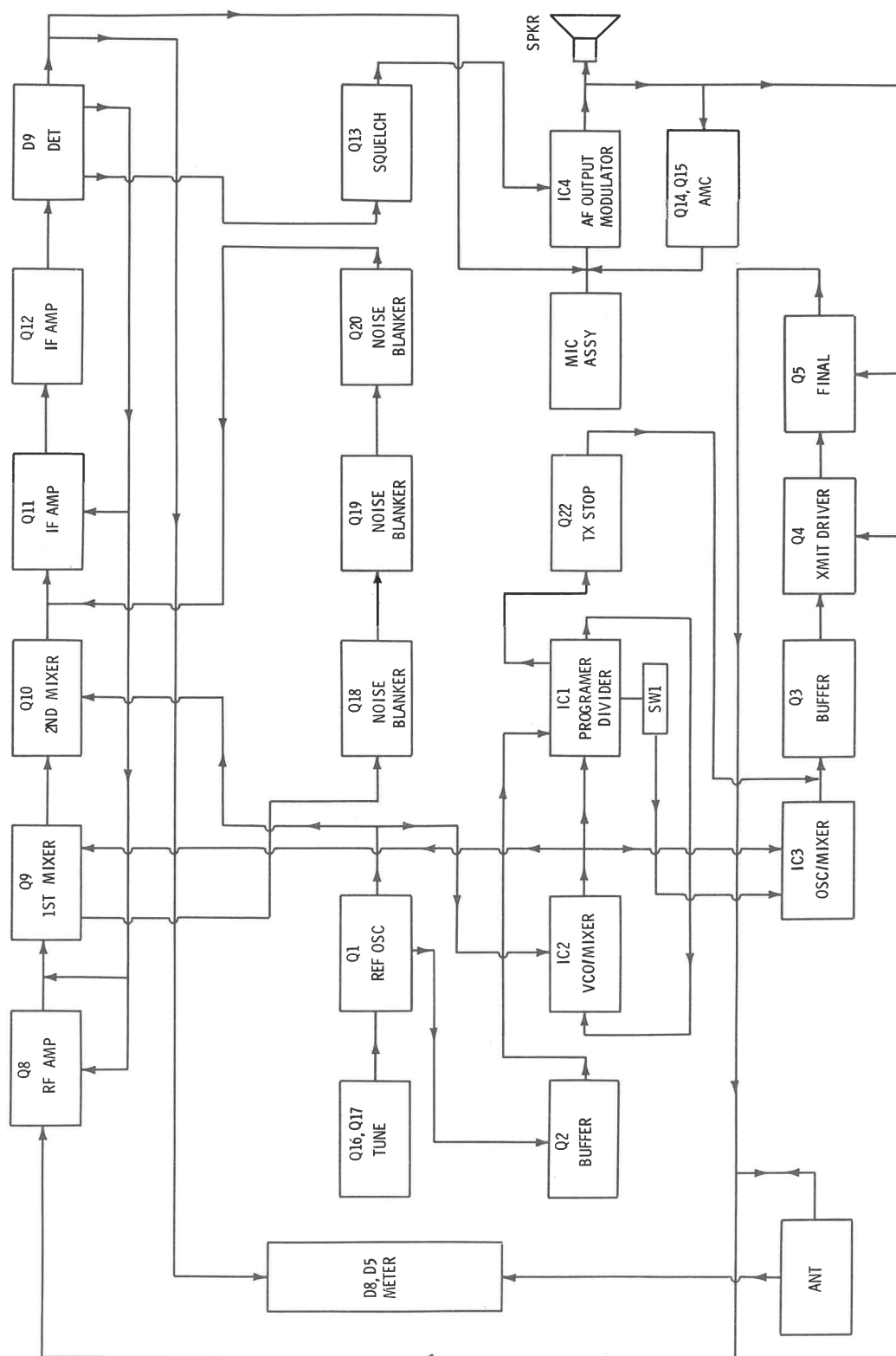


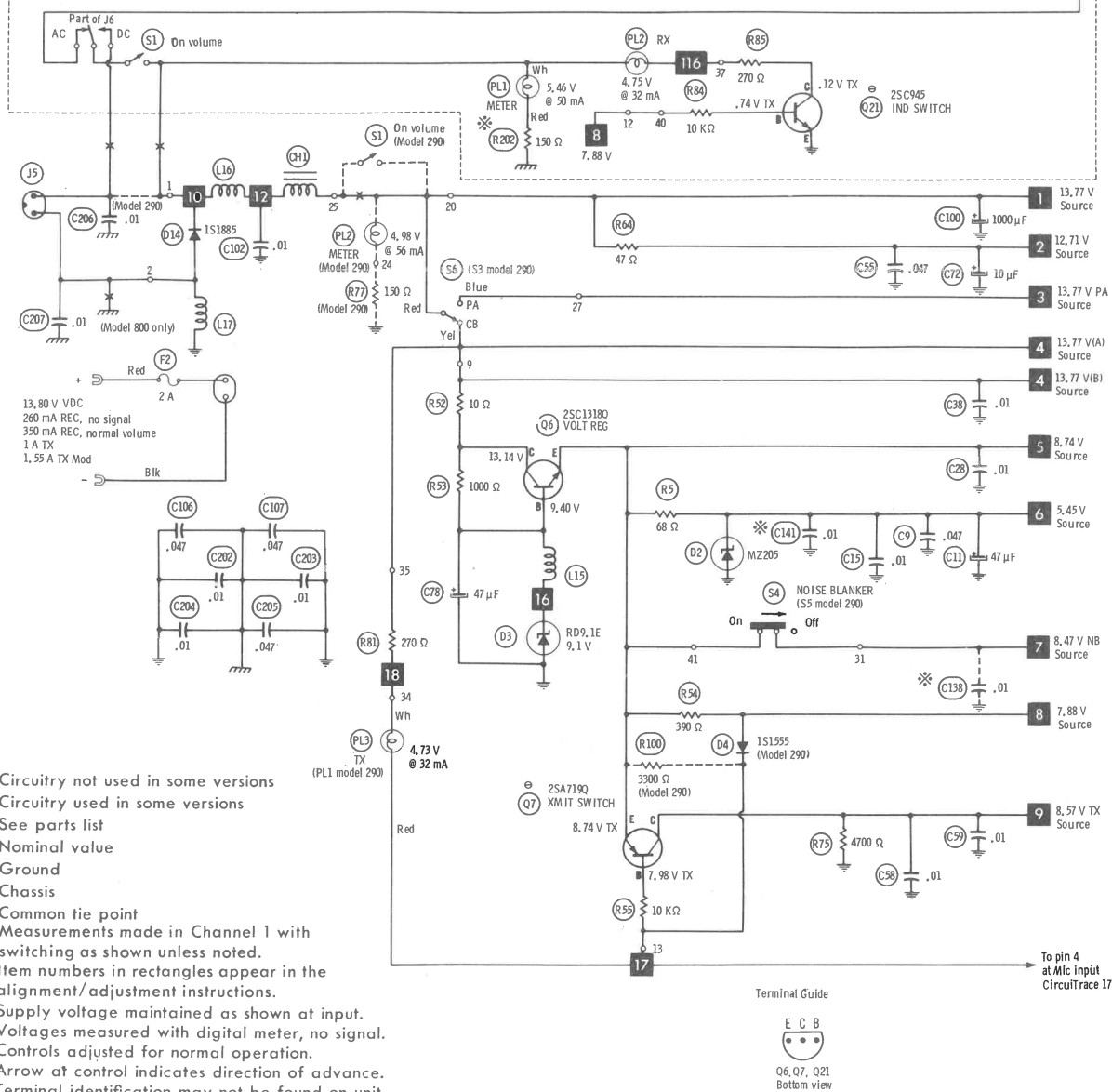
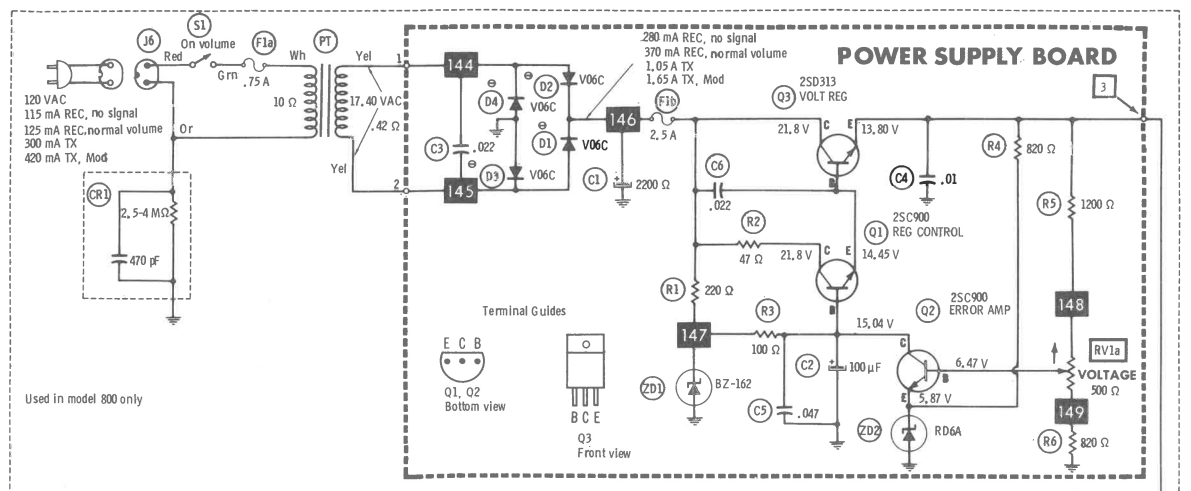
POWER SUPPLY BOARD

TRUTH CHART

1 = <u>5.33</u> Volts 0 = <u>0</u> Volts								
C H A N N E L	IC1 PROGRAM DIVIDER							REC & XMIT VCO OUTPUT IN MHz AT TP4
	PINS							
	9	10	11	12	13	14	15	
1	1	0	0	1	0	1	0	37.660
2	1	0	0	1	0	0	1	37.670
3	1	0	0	1	0	0	0	37.680
4	1	0	0	0	1	1	0	37.700
5	1	0	0	0	1	0	1	37.710
6	1	0	0	0	1	0	0	37.720
7	1	0	0	0	0	1	1	37.730
8	1	0	0	0	0	0	1	37.750
9	1	0	0	0	0	0	0	37.760
10	0	1	1	1	1	1	1	37.770
11	0	1	1	1	1	1	0	37.780
12	0	1	1	1	1	0	0	37.800
13	0	1	1	1	0	1	1	37.810
14	0	1	1	1	0	1	0	37.820
15	0	1	1	1	0	0	1	37.830
16	0	1	1	0	1	1	1	37.850
17	0	1	1	0	1	1	0	37.860
18	0	1	1	0	1	0	1	37.870
19	0	1	1	0	1	0	0	37.880
20	0	1	1	0	0	1	0	37.900

1 = <u>5.33</u> Volts 0 = <u>0</u> Volts								
C H A N N E L	IC1 PROGRAM DIVIDER							REC & XMIT VCO OUTPUT IN MHz AT TP4
	PINS							
	9	10	11	12	13	14	15	
21	0	1	1	0	0	0	1	37.910
22	0	1	1	0	0	0	0	37.920
23	0	1	0	1	1	0	1	37.950
24	0	1	0	1	1	1	1	37.930
25	0	1	0	1	1	1	0	37.940
26	0	1	0	1	1	0	0	37.960
27	0	1	0	1	0	1	1	37.970
28	0	1	0	1	0	1	0	37.980
29	0	1	0	1	0	0	1	37.990
30	0	1	0	1	0	0	0	38.000
31	0	1	0	0	1	1	1	38.010
32	0	1	0	0	1	1	0	38.020
33	0	1	0	0	1	0	1	38.030
34	0	1	0	0	1	0	0	38.040
35	0	1	0	0	0	1	1	38.050
36	0	1	0	0	0	1	0	38.060
37	0	1	0	0	0	0	1	38.070
38	0	1	0	0	0	0	0	38.080
39	0	0	1	1	1	1	1	38.090
40	0	0	1	1	1	1	0	38.100





- ✱ Circuitry not used in some versions
- Circuitry used in some versions
- ⊙ See parts list
- ⊗ Nominal value
- ⊕ Ground
- ⊖ Chassis
- ▽ Common tie point
- Measurements made in Channel 1 with switching as shown unless noted.
- Item numbers in rectangles appear in the alignment/adjustment instructions.
- Supply voltage maintained as shown at input.
- Voltages measured with digital meter, no signal.
- Controls adjusted for normal operation.
- Arrow at control indicates direction of advance.
- Terminal identification may not be found on unit.
- Resistors are 1/2W or less, 5% unless noted.
- Value in () used in some versions.

A PHOTOFACIT STANDARD NOTATION SCHEMATIC

WITH **CIRCUITRACE®**

© Howard W. Sams & Co., Inc. 1978

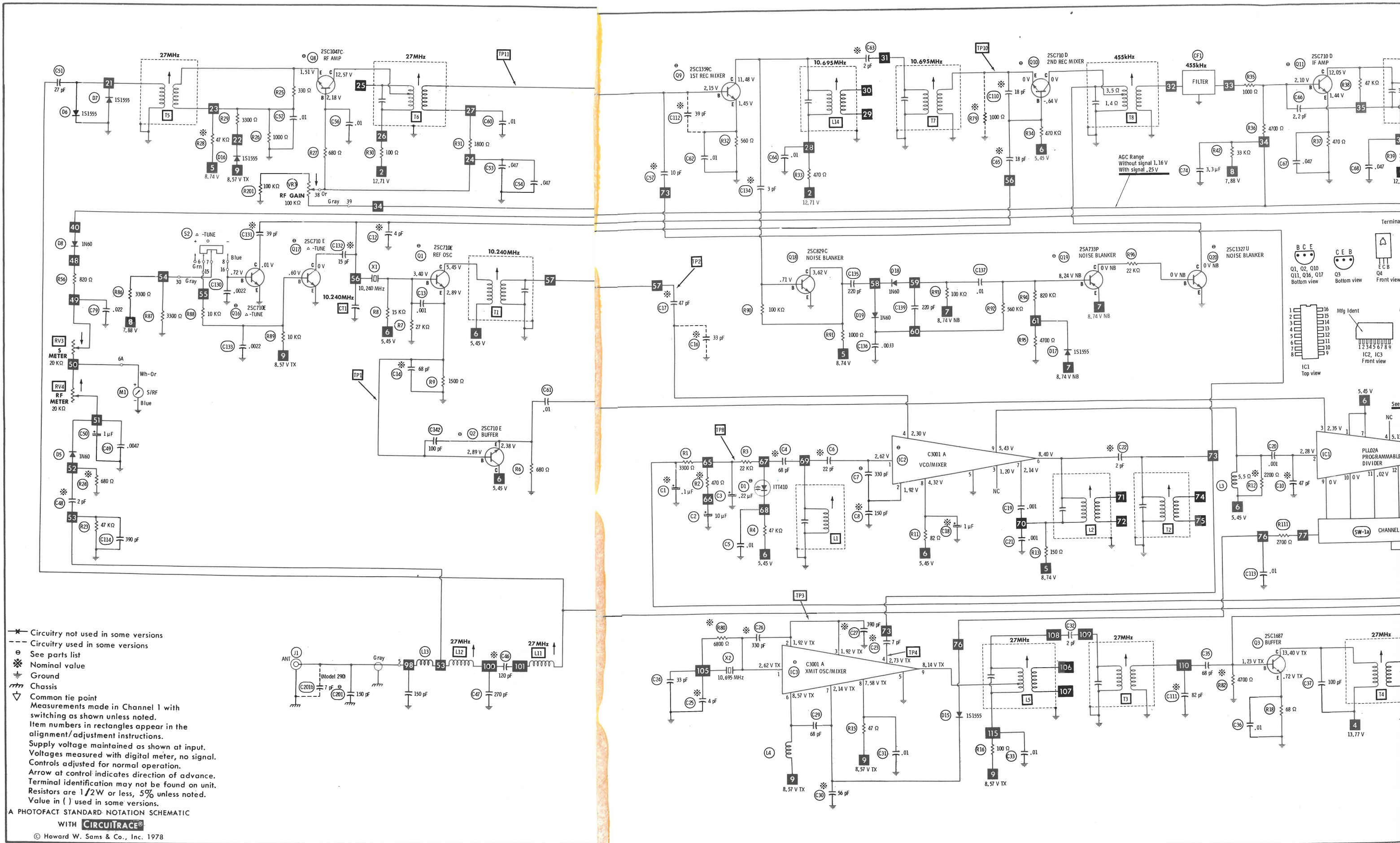
PARTS LIST AND DESCRIPTION

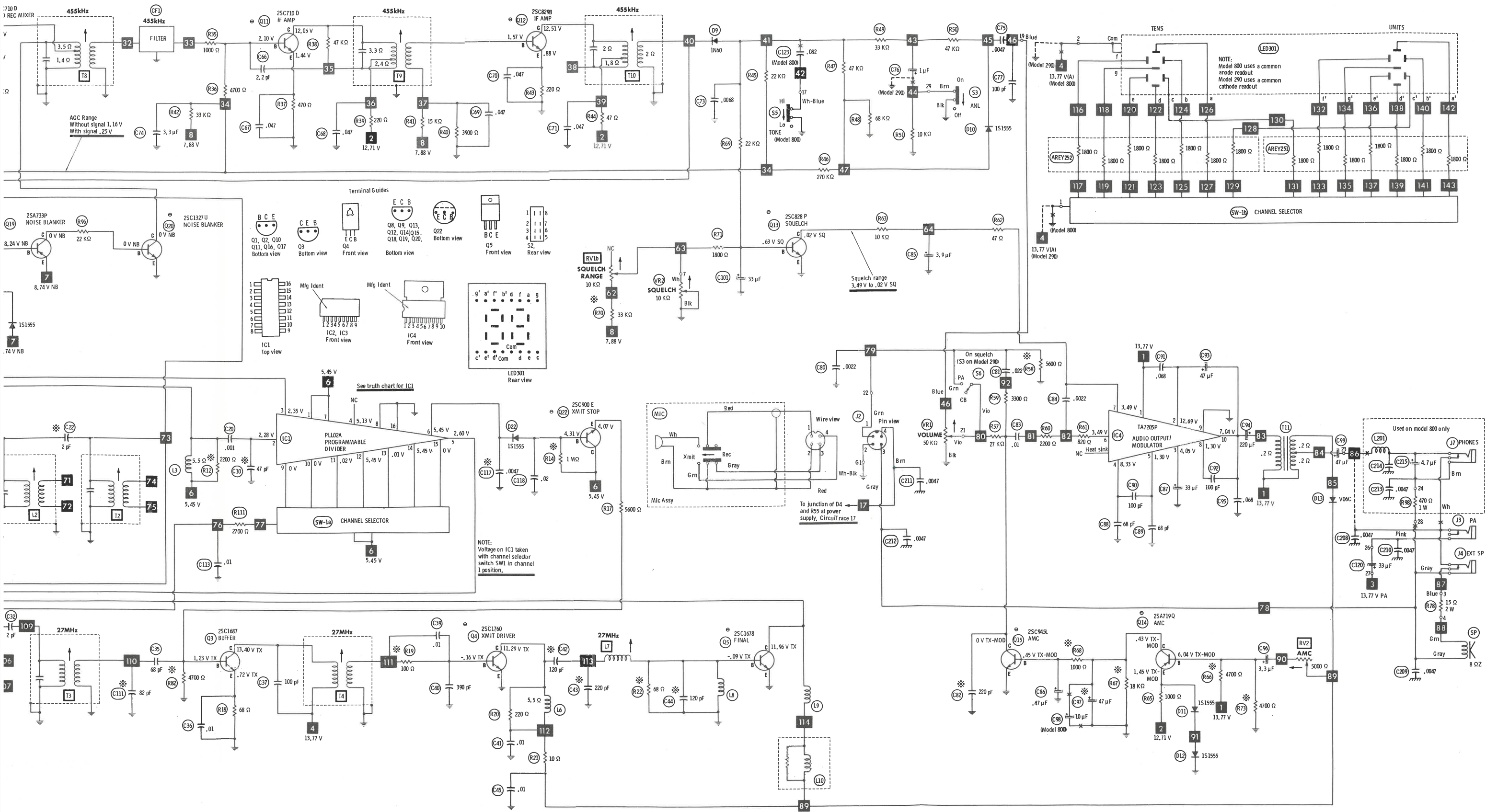
(When ordering parts, state Model, Part Number, and Description.)

SEMICONDUCTORS (Select replacement transistor for best results)

ITEM No.	TYPE No.	MFR. PART No.	REPLACEMENT DATA							
			GENERAL ELECTRIC PART No.	IR WORKMAN PART No.	MALLORY PART No.	MOTOROLA PART No.	RAYTHEON PART No.	RCA PART No.	SPRAGUE PART No.	SYLVANIA PART No.
MAIN BOARD										
D1	ITT410	83				HEPR2502				ECG612
D2	MZ.205	84		WEP602			RE 105			ECG135
D3	RD9.1E	85	GEZD-9.1		ZB9.1B		RE 114		RT-240	ECG139A
D4	1S1555	86	GE-300	D200	PTC214	HEPR0602	RE 52	SK3100	RT-218	ECG177
D5	1N60	87	1N60	1N60	PTC206	HEPR9135	RE 47	SK3088	RT-263	ECG109
D6	1S1555	86	GE-300	D200	PTC214	HEPR0602	RE 52	SK3100	RT-218	ECG177
D7	1S1555	86	GE-300	D200	PTC214	HEPR0602	RE 52	SK3100	RT-218	ECG177
D8	1N60	87	1N60	1N60	PTC206	HEPR9135	RE 47	SK3088	RT-263	ECG109
D9	1N60	87	1N60	1N60	PTC206	HEPR9135	RE 47	SK3088	RT-263	ECG109
D10	1S1555	86	GE-300	D200	PTC214	HEPR0602	RE 52	SK3100	RT-218	ECG177
D11	1S1555	86	GE-300	D200	PTC214	HEPR0602	RE 52	SK3100	RT-218	ECG177
D12	1S1555	86	GE-300	D200	PTC214	HEPR0602	RE 52	SK3100	RT-218	ECG177
D13	V06C	88	GE-504A	5A6D	PTC202	HEPR0054	RE 49	SK3017A	RT-215	ECG116
D14	1S1885	89	GE-504A	5A4D	PTC201	HEPR0052	RE 49	SK3030	RT-213	ECG116
D15	1S1555	86	GE-300	D200	PTC214	HEPR0602	RE 52	SK3100	RT-218	ECG177
D16	1S1555	86	GE-300	D200	PTC214	HEPR0602	RE 52	SK3100	RT-218	ECG177
D17	1S1555	86	GE-300	D200	PTC214	HEPR0602	RE 52	SK3100	RT-218	ECG177
D18	1N60	87	1N60	1N60	PTC206	HEPR9135	RE 47	SK3088	RT-263	ECG109
D19	1N60	87	1N60	1N60	PTC206	HEPR9135	RE 47	SK3088	RT-263	ECG109
D22	1S1555	86	GE-300	D200	PTC214	HEPR0602	RE 52	SK3100	RT-218	ECG177
IC1	PLL02A	61					RE 360-IC			ECG1167
IC2	C3001A									ECG1192
	TA7310P	62 (1)								ECG1192
IC3	C3001-0									ECG1192
	TA7310P	63 (1)								ECG1192
IC4	TA7205P	64	GEIC-179	WEP949	PTC780		RE 357-IC	SK3231	TVM81	ECG1155
Q1	2SC710	(1)	GE-211 *	(IR)2SC710	PTC115	HEPS0016 *	RE 13 *	SK3018 *	RT-308 *	ECG123A *
	2SC710E	(1)	GE-211 *	(IR)2SC710	PTC115	HEPS0016 *	RE 13 *	SK3018 *	RT-308 *	ECG123A *
	2SC710DE	65 (1)	GE-211 *	(IR)2SC710	PTC115	HEPS0016 *	RE 13 *	SK3018 *	RT-308 *	ECG123A *
Q2	2SC710	(1)	GE-211 *	(IR)2SC710	PTC115	HEPS0016 *	RE 13 *	SK3018 *	RT-308 *	ECG123A *
	2SC710E	(1)	GE-211 *	(IR)2SC710	PTC115	HEPS0016 *	RE 13 *	SK3018 *	RT-308 *	ECG123A *
	2SC710DE	65 (1)	GE-211 *	(IR)2SC710	PTC115	HEPS0016 *	RE 13 *	SK3018 *	RT-308 *	ECG123A *
Q3	2SC1687	66	GE-20 *	TR-24 *	PTC115	HEPS0016 *	RE 13 *	SK3018 *	RT-308 *	ECG123A *
Q4	2SC1760	(12)	GE-276	WEP1014	PTC121 *	HEPS0015 *	RE 224	SK3018 *	RT-107A *	ECG123A *
	2SC2036	(1)	GE-336				RE 209			ECG306
	2SC1846	(1)	GE-336				RE 209			ECG295
	2SC1846Q, R, S	67 (1)	GE-336				RE 209			ECG295
Q5	2SC1678	(13)	GE-322	WEP1678	PTC186		RE 203	SK3197	RT-146	ECG235
	2SC1306	68 (1)	GE-215	WEP1306	PTC186		RE 203	SK3197	RT-146	ECG235
	2SC2075	(1)	GE-215	WEP1306	PTC186		RE 203	SK3197	RT-146	ECG235
	2SC1974	(1)	GE-337	WEP1306	PTC186		RE 203	SK3197	RT-146	ECG235
Q6	2SC1318Q	(1)	GE-210 *	TR-21 *	PTC178	HEPS0015 *	RE 17 *	SK3122	RT-302	ECG128 *
	2SC1318Q, R	67 (1)	GE-210 *	TR-21 *	PTC178	HEPS0015 *	RE 17 *	SK3122	RT-302	ECG128 *
	2SC1318	(1)	GE-210 *	TR-21 *	PTC178	HEPS0015 *	RE 17 *	SK3122	RT-302	ECG128 *
Q7	2SC710P	(1)	GE-269	TR-28 *	PTC103 *	HEPS0019 *	RE 26 *	SK3114	RT-305	ECG290
	2SA719	(1)	GE-269	TR-28 *	PTC103 *	HEPS0019 *	RE 26 *	SK3114	RT-305	ECG290
	2SA719Q, R	70 (1)	GE-269	TR-28 *	PTC103 *	HEPS0019 *	RE 26 *	SK3114	RT-305	ECG290
	2SA720	(1)	GE-82	TR-19	PTC127	HEPS0026	RE 211	SK3114	RT-126A *	ECG298
Q8	2SC1047B	(1)	GE-60 *	(IR)2SC829B	PTC132 *	HEPS0016 *	RE 28 *	SK3018 *	RT-107	ECG161 *
	2SC1047B, C	71 (1)	GE-60 *	(IR)2SC829B	PTC132 *	HEPS0016 *	RE 28 *	SK3018 *	RT-107	ECG161 *
	2SC710	(1)	GE-211 *	(IR)2SC710	PTC115	HEPS0016 *	RE 13 *	SK3018 *	RT-308 *	ECG123A *
	2SC460	(1)	GE-61 *	(IR)2SC460B	PTC136 *	HEPS0014 *	RE 9	SK3018 *	RT-134	ECG107
	2SC1047C	(1)	GE-60 *	(IR)2SC829B	PTC132 *	HEPS0016 *	RE 28 *	SK3018 *	RT-107	ECG161 *
Q9	2SC1359B	(1)	GE-212	(IR)2SC380A0	PTC121 *	HEPS0014 *	RE 192	SK3038 *	RT-308	ECG199
	2SC1359B, C	72 (1)	GE-212	(IR)2SC380A0	PTC121 *	HEPS0014 *	RE 192	SK3038 *	RT-308	ECG199
	2SC710	(1)	GE-211 *	(IR)2SC710	PTC115	HEPS0016 *	RE 13 *	SK3018 *	RT-308 *	ECG123A *
	2SC1359C	(1)	GE-212	(IR)2SC380A0	PTC121 *	HEPS0014 *	RE 192	SK3038 *	RT-308	ECG199
Q10	2SC710	(1)	GE-211 *	(IR)2SC710	PTC115	HEPS0016 *	RE 13 *	SK3018 *	RT-308 *	ECG123A *
	2SC710D	73 (1)	GE-211 *	(IR)2SC710	PTC115	HEPS0016 *	RE 13 *	SK3018 *	RT-308 *	ECG123A *
	2SC829	(1)	GE-20 *	(IR)2SC829B	PTC121 *	HEPS0015 *	RE 9 *	SK3122	RT-308	ECG229 *
	2SC839	(1)	GE-61 *	(IR)2SC644	PTC132 *	HEPS0015 *	RE 13 *	SK3018 *	RT-308	ECG123A *
Q11	2SC710	(1)	GE-211 *	(IR)2SC710	PTC115	HEPS0016 *	RE 13 *	SK3018 *	RT-308 *	ECG123A *
	2SC710D	73 (1)	GE-211 *	(IR)2SC710	PTC115	HEPS0016 *	RE 13 *	SK3018 *	RT-308 *	ECG123A *
	2SC829	(1)	GE-20 *	(IR)2SC829B	PTC121 *	HEPS0015 *	RE 9 *	SK3122	RT-308	ECG229 *
Q12	2SC829B	(1)	GE-20 *	(IR)2SC829B	PTC121 *	HEPS0015 *	RE 9 *	SK3122	RT-308	ECG229 *
	2SC829	(1)	GE-20 *	(IR)2SC829B	PTC121 *	HEPS0015 *	RE 9 *	SK3122	RT-308	ECG229 *
	2SC829B, C	74 (1)	GE-20 *	(IR)2SC829B	PTC121 *	HEPS0015 *	RE 9 *	SK3122	RT-308	ECG229 *
	2SC710	(1)	GE-211 *	(IR)2SC710	PTC115	HEPS0016 *	RE 13 *	SK3018 *	RT-308 *	ECG123A *
Q13	2SC828P	75	GE-61 *	(IR)2SC828A	PTC121 *	HEPS0015 *	RE 192	SK3122	RT-302	ECG199
	2SC828	(1)	GE-61 *	(IR)2SC828A	PTC121 *	HEPS0015 *	RE 192	SK3122	RT-302	ECG199
	2SC945	(1)	GE-212	(IR)2SC945	PTC121 *	HEPS0015 *	RE 192	SK3124	RT-107A	ECG199
	2SC372	(1)	GE-61 *	(IR)2SC372	PTC121 *	HEPS0015 *	RE 13 *	SK3122	RT-308	ECG123A *
Q14	2SA719Q	76	GE-269	TR-28 *	PTC103 *	HEPS0019 *	RE 26 *	SK3114	RT-305	ECG290
	2SA719	(1)	GE-269	TR-28 *	PTC103 *	HEPS0019 *	RE 26 *	SK3114	RT-305	ECG290
	2SA720	(1)	GE-82 *	TR-19	PTC127 *	HEPS0026	RE 211	SK3114	RT-126A	ECG298
	2SA564	(1)	GE-65	(IR)2SA564A	PTC103 *	HEPS0019 *	RE 193	SK3114	RT-303	ECG234
Q15	2SC945L	77	GE-212	(IR)2SC945	PTC121 *	HEPS0015 *	RE 192	SK3124	RT-107A	ECG199
	2SC945P, Q	(1)	GE-212	(IR)2SC945	PTC121 *	HEPS0015 *	RE 192	SK3124	RT-107A	ECG199
	2SC945	(1)	GE-212	(IR)2SC945	PTC121 *	HEPS0015 *	RE 192	SK3124	RT-107A	ECG199

COLT MODELS 290, 800





PARTS LIST AND DESCRIPTION (CONTINUED)

(When ordering parts, state Model, Part Number, and Description.)

SEMICONDUCTORS (Select replacement transistor for best results) (cont)

ITEM No.	TYPE No.	MFR. PART No.	REPLACEMENT DATA							
			GENERAL ELECTRIC PART No.	IR WORKMAN PART No.	MALLORY PART No.	MOTOROLA PART No.	RAYTHEON PART No.	RCA PART No.	SPRAGUE PART No.	SYLVANIA PART No.
Q16	2SC710	65 (1)	GE-211 *	(IR)2SC710	PTC115	HEPS0016 *	RE 13 *	SK3018 *	RT-308 *	ECG123A *
Q17	2SC710DE	(1)	GE-211 *	(IR)2SC710	PTC115	HEPS0016 *	RE 13 *	SK3018 *	RT-308 *	ECG123A *
	2SC829	(1)	GE-20 *	(IR)2SC829B	PTC121 *	HEPS0015 *	RE 9 *	SK3122	RT-308	ECG229 *
	2SC839	(1)	GE-61 *	(IR)2SC644	PTC132 *	HEPS0015 *	RE 13 *	SK3018 *	RT-308	ECG123A *
	2SC710E	(1)	GE-211 *	(IR)2SC710	PTC115	HEPS0016 *	RE 13 *	SK3018 *	RT-308 *	ECG123A *
Q18	2SC710	65 (1)	GE-211 *	(IR)2SC710	PTC115	HEPS0016 *	RE 13 *	SK3018 *	RT-308 *	ECG123A *
	2SC710DE	(1)	GE-211 *	(IR)2SC710	PTC115	HEPS0016 *	RE 13 *	SK3018 *	RT-308 *	ECG123A *
	2SC829	(1)	GE-20 *	(IR)2SC829B	PTC121 *	HEPS0015 *	RE 9 *	SK3122	RT-308	ECG229 *
	2SC839	(1)	GE-61 *	(IR)2SC644	PTC132 *	HEPS0015 *	RE 13 *	SK3018 *	RT-308	ECG123A *
Q19	2SC829C	78	GE-20 *	(IR)2SC829B	PTC121 *	HEPS0015 *	RE 9 *	SK3122	RT-308	ECG229 *
	2SC829	(1)	GE-20 *	(IR)2SC829B	PTC121 *	HEPS0015 *	RE 9 *	SK3122	RT-308	ECG229 *
	2SA733	79 (1)	GE-48	TR-31	PTC103 *	HEPS0019 *	RE 26 *	SK3138	RT-303	ECG294
	2SA733Q	(1)	GE-48	TR-31	PTC103 *	HEPS0019 *	RE 26 *	SK3138	RT-303	ECG294
Q20	2SA733P	80 (1)	GE-85 *	(IR)2SC945	PTC139 *	HEPS0024 *	RE 192	SK3124	RT-107A	ECG199
	2SC1327U	(1)	GE-85 *	(IR)2SC945	PTC139 *	HEPS0024 *	RE 192	SK3124	RT-107A	ECG199
	2SC1327	(1)	GE-62	(IR)2SC644	PTC139 *	HEPS0015 *	RE 192	SK3124	RT-302	ECG199
	2SC900	(1)	GE-212	(IR)2SC945	PTC121 *	HEPS0015 *	RE 192	SK3124	RT-107A	ECG199
Q21	2SC945AQ	81 (1)	GE-212	(IR)2SC945	PTC121 *	HEPS0015 *	RE 192	SK3122	RT-302	ECG199
	2SA945AQ,R	(1)	GE-61 *	(IR)2SC828A	PTC139 *	HEPS0015 *	RE 192	SK3124	RT-302	ECG199
	2SC828	(1)	GE-62	(IR)2SC644	PTC139 *	HEPS0015 *	RE 192	SK3124	RT-302	ECG199
	2SC900U,E	82	GE-62	(IR)2SC644	PTC139 *	HEPS0015 *	RE 192	SK3124	RT-302	ECG199
Q22	2SC900	(1)	GE-62	(IR)2SC644	PTC139 *	HEPS0015 *	RE 192	SK3124	RT-302	ECG199
	2SC900E	(1)	GE-62	(IR)2SC644	PTC139 *	HEPS0015 *	RE 192	SK3124	RT-302	ECG199
POWER SUPPLY BOARD										
D1	V06C	346	GE-504A	5A6D	PTC202	HEPR0054	RE 49	SK3017A	RT-215	ECG116
D2	V06C	346	GE-504A	5A6D	PTC202	HEPR0054	RE 49	SK3017A	RT-215	ECG116
D3	V06C	346	GE-504A	5A6D	PTC202	HEPR0054	RE 49	SK3017A	RT-215	ECG116
D4	V06C	346	GE-504A	5A6D	PTC202	HEPR0054	RE 49	SK3017A	RT-215	ECG116
Q1	2SC900F	343	GE-62	(IR)2SC644	PTC139 *	HEPS0015 *	RE 192	SK3124	RT-302	ECG199
Q2	2SC900	(1)	GE-62	(IR)2SC644	PTC139 *	HEPS0015 *	RE 192	SK3124	RT-302	ECG199
	2SC900F	343	GE-62	(IR)2SC644	PTC139 *	HEPS0015 *	RE 192	SK3124	RT-302	ECG199
	2SC900	(1)	GE-62	(IR)2SC644	PTC139 *	HEPS0015 *	RE 192	SK3124	RT-302	ECG199
	2SD313	24 (14)	GE-241	TR-76	PTC154	HEPS0015 *	RE 205	SK3054	RT-154	ECG196
ZD1	BZ-162	344	GEZD-16		ZB16B		RE 122		RT-246	ECG5075A
ZD2	RD5.6	344	GEZD-5.6		ZB5.6B		RE 107		RT-236	ECG136A
	RD6A	(1)	GEZD-5.6		ZB5.6A	HEPZ0407	RE 107	SK3057	RT-236	ECG136

* Lead configuration may vary from original.

(1) Used in some versions.

(12) (Q4) 950 MW @ 500 MA

(13) (Q5) 10 WATT @ 3.0 AMP.

(14) (Q3) 30 WATT @ 3.0 AMPS.

ELECTROLYTIC CAPACITORS

ITEM No.	RATING	REPLACEMENT DATA				
		MFRG. PART No.	CORNELL-DUBILIER PART No.	MALLORY PART No.	SPRAGUE PART No.	
					Q-LINE	GENERAL LINE
C1	.1 10V	CD-A1A0R1ME	PC10-25	TDC104M050EL	QDT1-2	SD50-R109
C2	10 16V	CE-ED100ZMN		VTT10B25	QV1-41	EV-1222
C3	.22 10V	CD-A1AR22ME		TDC224M050EL	QDT1-10	SD50-R229
C11	47 10V	CE-EC470ALN	PC50-16	VTT47D16	QV1-73	EV-1226
C18	1 50V	CE-EG010ALN	PC1-50	VTT1A50	QV1-11	EV-1615
C50	1 50V	CE-EG010ALN	PC1-50	VTT1A50	QV1-11	EV-1615
C72	10 16V	CE-ED100ALN	PC10-25	VTT10B25	QV1-41	EV-1222
C74	3.3 25V	CE-EE3R3ALN	PC5-50	VTT3R3A50	QV1-23	EV-1318
C76	1 50V	CE-EG010ALN	PC1-50	VTT1A50	QV1-11	EV-1615
C78	47 16V	CE-ED470ALN	PC50-16	VTT47D16	QV1-73	EV-1226
C85	3.9 25V	CS-SE3R9MDN		TDC475M010EL	QDT1-48	SD10-4R79
C86	.47 10V	CD-A1AR47ME		TDC474M050EL	QDT1-19	SD50-R479
C87	33 6.3V	CE-EB330ALN	PC30-25	VTT33B10	QV1-61	EV-1125
C93	47 16V	CE-ED470ALN	PC50-16	VTT47D16	QV1-73	EV-1226
C94	220 16V	CE-AD221ZLS	PC250-25	VTT220H16	QV1-117	EV-1240
C96	3.3 25V	CE-EE3R3ALN	PC5-50	VTT3R3A50	QV1-23	EV-1318
C97	47 10V	CE-EC470ALN	PC50-16	VTT47D16	QV1-73	EV-1226
C98	10 16V	CE-ED100ALN(1)	PC10-25	VTT10B25	QV1-41	EV-1222
C99	47 25V	CE-AE470ZLS	PC50-25	VTT47E25	QV1-75	EV-1326
C100	1000 16V	CE-ED102ZUN	PC1000-16	VTT1000L16	QV1-183	EV-1260
C101	33 6.3V	CE-EB330ALN	PC30-25	VTT33B10	QV1-61	EV-1125
C120	33 16V	CE-ED330ALN	PC30-25	VTT33D25	QV1-63	EV-1325
C215	4.7 25V	CE-AE47ALN(1)	PC5-50	VTT47R7B50	QV1-27	EV-1319
POWER SUPPLY BOARD						
C1	2200 25V	CE-T1E22201(1)	WBR2000-25	TC2520A	QE1-645	TVA-1213.5
C2	100 25V	CE-AE101ALN(1)	PC100-25	VTT100G25	QV1-97	EV-1330

(1) Used in Model 800 only.

PARTS LIST AND DESCRIPTION (CONTINUED)

(When ordering parts, state Model, Part Number, and Description.)

CAPACITORS

ITEM No.	RATING	MFR. PART No.	REPLACEMENT DATA				
			CENTRALAB PART No.	CORNELL-DUBILIER PART No.	MALLORY PART No.	SPRAGUE Q-LINE	PART No. GENERAL LINE
MAIN BOARD							
C4	68 N150 50V	CC-CB680KPM			*		10TCP-Q68
C5	.01 50V		DC-103	MGP01	TA110	QC2-141	TG-S10
C6	22 N150 50V	CC-CB220KPM			*		10TCP-Q22
C7	330 50V		DD-331	GP330	GP333		10TS-T33
C8	150 50V		DD-151		GP315		10TS-T15
C9	.047 50V		UK50-503		MAG5015		
C10	47 50V		DTZ-47	NP047	CN0447		10TCC-Q47
C12	4 NPO 50V		DTZ-4R7	NP04P7	CN0547		10TCC-V47
C13	.001 50V			DPMS6D1	EWFA1A210	QF1-1	1PB-D10
C14	68 N150 50V	CC-CB680KPM			*		10TCP-Q68
C15	.01 50V		DC-103	MGP01	TA110	QC2-141	TG-S10
C16	33 50V	(1)					
C17	47 N150 50V	CC-CB470KPM			*		10TCP-Q47
C19	.001 50V			DPMS6D1	EWFA1A210	QF1-1	1PB-D10
C20	.001 50V			DPMS6D1	EWFA1A210	QF1-1	1PB-D10
C21	.001 100V	(2)		CD19FD102J03	SX210		MWC-102
	.001 50V	(3)		DPMS6D1	EWFA1A210	QF1-1	1PB-D10
C22	2 50V		DTZ-2R2	NP02P2	CN0522		10TCC-V22
C23	7 50V		DTZ-6R8	NP06P8	CN0568		10TCC-V68
C24	33 N150 50V	CC-CB330KPM			*		10TCP-Q33
C25	4 NPO 50V		DTZ-4R7	NP04P7	CN0547		10TCC-V47
C26	330 100V			CD15FD331J03	SX333	QW1-39	MWA-331
C27	390 50V		DD-391	GP390	GP339		10TS-T39
C28	.01 50V		DC-103	MGP01	TA110	QC2-141	TG-S10
C29	68 50V		DD-680	GP68	GP468		10TS-Q68
C30	56 50V		DD-560		GP456		10TS-Q56
C31	.01 50V		DC-103	MGP01	TA110	QC2-141	TG-S10
C32	2 50V		DTZ-2R2	NP02P2	CN0522		10TCC-V22
C33	.01 50V		DC-103	MGP01	TA110	QC2-141	TG-S10
C35	68 50V		DD-680	GP68	GP468		10TS-Q68
C36	.01 50V		DC-103	MGP01	TA110	QC2-141	TG-S10
C37	100 N150 50V	CC-CB101KPM			*		10TCP-T10
C38	.01 50V		DC-103	MGP01	TA110	QC2-141	TG-S10
C39	.01 50V		DD-391	WMF1S1	EWFA1A110	QF1-91	1PB-S10
C40	390 50V		DC-103	GP390	GP339		10TS-T39
C41	.01 50V		DTZ-120	MGP01	TA110	QC2-141	TG-S10
C42	120 50V		DD-221		CN0312		10TCC-T12
C43	220 50V		DTZ-120		GP322		10TS-T22
C44	120 50V		DC-103	MGP01	CN0312		10TCC-T12
C45	.01 50V		DTZ-120		TA110	QC2-141	TG-S10
C46	120 50V		DC-103		CN0312		10TCC-T12
C47	220 500V		DTZ-2R2	CD15FD221J03	SX322	QW1-35	MWA-221
C48	2 500V		DD-472	NP02P2	CN0522		10TCC-V22
C49	.0047 50V			GP4700	GP247		5GA-D47
C51	27 50V				CN0427		10TCC-Q27
C52	.01 50V		DC-103	MGP01	TA110	QC2-141	TG-S10
C53	.047 50V		UK50-503		MAG5015		
C54	.047 50V		UK50-503		MAG5015		
C55	.047 50V			DPMS2S47	EWFA1A147	QF1-171	1PB-S47
C56	.01 50V		DC-103	MGP01	TA110	QC2-141	TG-S10
C57	10 50V		DTZ-10	NP010	CN0410		10TCC-Q10
C58	.01 50V		DC-103	MGP01	TA110	QC2-141	TG-S10
C59	.01 50V		DC-103	MGP01	TA110	QC2-141	TG-S10
C60	.01 50V		DC-103	MGP01	TA110	QC2-141	TG-S10
C61	.01 50V		DC-103	MGP01	TA110	QC2-141	TG-S10
C62	.01 50V		DC-103	MGP01	TA110	QC2-141	TG-S10
C63	2 50V		DTZ-2R2	NP02P2	CN0522		10TCC-V22
C64	.01 50V		DC-103	MGP01	TA110	QC2-141	TG-S10
C65	18 N150 50V	CC-CB180KPM			*		10TCP-Q18
C66	2.2 500V		DTZ-2R2	NP02P2	CN0522		10TCC-V22
C67	.047 50V			DPMS2S47	EWFA1A147	QF1-171	1PB-S47
C68	.047 50V			DPMS2S47	EWFA1A147	QF1-171	1PB-S47
C69	.047 50V			DPMS2S47	EWFA1A147	QF1-171	1PB-S47
C70	.047 50V			DPMS2S47	EWFA1A147	QF1-171	1PB-S47
C71	.047 50V			DPMS2S47	EWFA1A147	QF1-171	1PB-S47
C73	.0068 50V			WMF1D68	EWFA1A268	QF1-73	1PB-D68
C75	.0047 50V			WMF1D47	EWFA1A247	QF1-57	1PB-D47
C77	100 50V		DD-101	GP100	GP310		10TS-T10
C79	.022 50V		DD-222	DPMS2S22	EWFA1A122	QF1-127	1PB-S22
C80	.0022 50V				GP222	QC2-97	5GA-D22
C81	.022 50V		DD-221	DPMS2S22	EWFA1A122	QF1-127	1PB-S22
C82	220 50V				GP322		10TS-T22
C83	.01 50V		DD-222	WMF1S1	EWFA1A110	QF1-91	1PB-S10
C84	.0022 50V		DD-680		GP222	QC2-97	5GA-D22
C88	68 50V		DD-101	GP68	GP468		10TS-Q68
C89	68 50V		DD-101	GP100	GP310		10TS-T10
C90	100 50V		DD-101	GP100	GP310		10TS-T10
C91	.068 50V			WMF1S68	EWFA1A168	QF1-195	1PB-S68
C92	100 50V		DD-101	GP100	GP310		10TS-T10
C95	.068 50V			WMF1S68	EWFA1A168	QF1-195	1PB-S68
C102	.01 50V		DC-103	MGP01	TA110	QC2-141	TG-S10
C106	.047 50V		UK50-503		MAG5015		
C107	.047 50V		UK50-503		MAG5015		
C110	18 50V				CN0418		10TCC-Q18
C111	82 50V		DD-820		GP482		10TS-Q82
C112	39 50V	(1)			CN0439		10TCC-Q39

PARTS LIST AND DESCRIPTION (CONTINUED)

(When ordering parts, state Model, Part Number, and Description.)

CAPACITORS (cont)

ITEM No.	RATING	MFR. PART No.	REPLACEMENT DATA				
			CENTRALAB PART No.	CORNELL-DUBILIER PART No.	MALLORY PART No.	SPRAGUE PART No.	
						Q-LINE	GENERAL LINE
C113	.01 50V	(3) CC-CB390KPM CC-CB150KPM	DC-103	MGP01	TA110	QC2-141	TG-S10
C114	390 500V		DD-391	GP390	GP339		10TS-T39
C117	.0047 50V		DD-472	GP4700	GP247		5GA-D47
C118	.022 50V		DC-253	MGP025	TA125		TG-S25
C123	.068 50V			WMF1S68	EWFI1A168	QF1-195	1PB-S68
C130	.0022 50V		DD-222		GP222	QC2-97	5GA-D22
C131	39 N150 50V				*		10TCP-Q39
C132	15 N150 50V				GP222	QC2-97	10TCP-Q15
C133	.0022 50V		DD-222				5GA-D22
C134	3 50V						
C135	220 50V	(1)	DD-221		GP322		10TS-T22
C136	.0033 100V			CD19FD332J03	SX233		MWC-332
C137	.01 50V		DC-103	MGP01	TA110	QC2-141	TG-S10
C138	.01 50V		DC-103	MGP01	TA110	QC2-141	TG-S10
C139	220 50V		DD-221		GP322		10TS-T22
C141	.01 50V		DC-103	MGP01	TA110	QC2-141	TG-S10
C142	100 50V	(3)	DD-101	GP100	GP310		10TS-T10
C200	7 500V	(2)	DTZ-6R8	NP06P8	CN0568		10TCC-V68
C201	180 500V	(2)		CD15FD181J03	SX318	QW1-33	MWA-181
	150 500V	(3)	DD-151		GP315		10TS-T15
C202	.01 50V	(2)	DC-103	MGP01	TA110	QC2-141	TG-S10
C203	.01 50V		DC-103	MGP01	TA110	QC2-141	TG-S10
C204	.01 50V		DC-103	MGP01	TA110	QC2-141	TG-S10
C205	.047 50V		UK50-503		MAG5015		
C206	.01 50V		DC-103	MGP01	TA110	QC2-141	TG-S10
C207	.01 50V		DC-103	MGP01	TA110	QC2-141	TG-S10
C208	.0047 50V		DD-472	GP4700	GP247		5GA-D47
C209	.0047 50V		DD-472	GP4700	GP247		5GA-D47
C210	.0047 50V		DD-472	GP4700	GP247		5GA-D47
C211	.0047 50V		DD-472	GP4700	GP247		5GA-D47
C212	.0047 50V	(3)	DD-472	GP4700	GP247		5GA-D47
C213	.0047 50V		DD-472	GP4700	GP247		5GA-D47
C214	.0047 50V		DD-472	GP4700	GP247		5GA-D47
CT1	20 50V	(3) CT-Z7200N01					
POWER SUPPLY BOARD							
C3	.022 50V	(3)	DC-253	MGP025	TA125		TG-S25
C4	.01 50V	(3)	DC-103	MGP01	TA110	QC2-141	TG-S10
C5	.047 50V	(3)	UK50-503		MAG5015		
C6	.022 50V	(3)	DC-253	MGP025	TA125		TG-S25

* Not normally in distributor's stock. Available thru distributor on order to manufacturer.

(1) Used in some versions.

(2) Used in Model 290 only.

(3) Used in Model 800 only.

CONTROLS (All wattages 1/2 watt, or less, unless listed)

ITEM No.	FUNCTION	RESISTANCE	REPLACEMENT DATA				
			MFR. PART No.	CENTRALAB PART No.	CLAROSTAT PART No.	MALLORY PART No.	TRW PART No.
RV1a	Voltage	500	RP-ANB50101	T-500	C-501	MTC52L1	X201R501B
RV1b	Squelch Range	10K	RP-GNB10301	T-10K (3)	C-103 (3)	MTC14L4	U201R103B
RV2	AMC	5000	RP-GNB50202				U260R502B
RV3	S Meter	20K	RP-GNB20301				X260R253B
RV4	RF Meter	20K	RP-GNB20301				X260R253B
VR1	Volume/Power Switch	50K	RV-AD503A05	F2-50K (1), SSK012, KR2	A47-50K-Z (1), KSS-3, SWE-23	RU54A, SL36, SL1500, US42	BUT (1), CF63, SS1, WF
	Volume/Power Switch	50K	RV-NB503A04				
VR2	Squelch/PA Switch	10K	RV-NE103B06				
	Squelch/PA Switch	10K	RV-NE103B02				
VR3	RF Gain	100K	RV-NA104B04				
	RF Gain	100K	RV-NA104B02				

(1) Enlarge mounting hole.

(18) Used in Model 290.

(19) Used in Model 800.

RESISTORS (Power and Special)

ITEM No.	RATING	REPLACEMENT DATA		ITEM No.	RATING	REPLACEMENT DATA	
		WORKMAN PART No.	MFR. PART No.			WORKMAN PART No.	MFR. PART No.
AREY251	Resistor Network		RA-C182M07N(1)	AREY252	Resistor Network		RA-C182M07N(1)

(1) Consists of seven 1800-ohm resistors.

PARTS LIST AND DESCRIPTION (CONTINUED)

(When ordering parts, state Model, Part Number, and Description.)

COILS (RF-IF)

ITEM No.	FUNCTION	REPLACEMENT DATA			REMARKS
		PART No.	OTHER IDENTIFICATION	MILLER PART No.	
L1	VCO (18MHz)	TR-10DD003S			
L2	VCO Mixer (37MHz)	TR-10MB003T			
L3	RF Choke (68uH)	LF-680KD01N			
L4	RF Choke	LF-0R9KD01N(1)			
	RF Choke	LF-1R0KD01N(2)			
L5	Xmit Oscillator (27MHz)	TR-10CB002M			
L6	RF Choke (2.2uH)	LF-2R2KD01N			
L7	Xmit Driver (27MHz)	TR-A5CZ001M			
L8	RF Choke (68uH)	LF-680KD01N			
L9	RF Choke (.55uH)	LA-1KE1011A			
L10	RF Choke (1uH)	LD-ADX3825M			
L11	Final (27MHz)	TR-A5CZ002M			
L12	P1 Filter (27MHz)	TR-A5CZ003M			
L13	RF Choke (.4uH)	LA-1JG1010A			
L14	IF (10.695MHz)	TR-10MA017S			
L15	RF Choke (68uH)	LF-680KD01N			
L16	RF Choke (.75uH)	LD-ADB4024B			
L17	RF Choke (.75uH)	LD-ADB4024B			
T1	Ref Oscillator (10.240MHz)	TR-10DB002S			
T2	VCO Mixer (38MHz)	TR-10MB005S			
T3	Xmit Mixer (27MHz)	TR-10CB001S			
T4	Xmit Buffer (27MHz)	TR-10CP005S			
T5	Rec Antenna (27MHz)	TR-10MP003T			
T6	Rec RF (27MHz)	TR-10CA003T			
T7	IF (10.695MHz)	TR-10MA017S			
T8	IF (455kHz)	TR-07LA004N			
T9	IF (455kHz)	TR-07LA005N			
T10	IF (455kHz)	TR-07LA023N			
L201	RF Choke	LD-ADA3038J(1)			

(1) Used in Model 800.

(2) Used in Model 290.

FILTER CHOKE

ITEM No.	RATINGS			REPLACEMENT DATA			NOTES
	CURRENT (Measured)	DC RES.	INDUCTANCE (O CURRENT 1000~)	MFGR. PART No.	THORDARSON PART No.	TRIAD PART No.	
CH1	1.3A	.116	.48mH	LJ-119H001Y ELA-16(1)	TR-523		(1) Number on unit.

TRANSFORMER (Audio Output)

ITEM No.	IMPEDANCE		REPLACEMENT DATA			NOTES
	PRI.	SEC.	MFGR. PART No.	THORDARSON PART No.	TRIAD PART No.	
T11	2.88	1 8 2 13.52	TB-G25B001W ETA-66(1)	TR723	MCB-16	(1) Number on unit.

TRANSFORMER (Power)

ITEM No.	RATING		REPLACEMENT DATA			NOTES
	PRI.	SEC. 1	MFGR. PART No.	THORDARSON PART No.	TRIAD PART No.	
PT	120V AC @ 420mA	17.40V AC @ 2.79A	TP-DP68V002Y			

SPEAKER

ITEM No.	TYPE	REPLACEMENT DATA		NOTES
		MFGR. PART No.	QUAM PART No.	
SP	3" PM, 8 Ohms	ZQ-A0770802	30A05Z8R	

COLT MODELS 290, 800

PARTS LIST AND DESCRIPTION (CONTINUED)

(When ordering parts, state Model, Part Number, and Description.)

FUSE DEVICES

ITEM No.	DESCRIPTION	REPLACEMENT DATA						
		PART No.		BUSS PART No.		LITTELFUSE PART No.		WORKMAN PART No.
		DEVICE	HOLDER	DEVICE	HOLDER	DEVICE	HOLDER	DEVICE
F1a F1b F2	.75 Amp 250V 2.5 Amp 250V Pigtail 2 Amp	ZF-BQ75101U(1) ZF-AQ25201U(1)	YH-F1S3001U(1) AC-DC038GEA(2) AC-DC052ULA(1)	AGC3/4 GJV2 1/2 AGC2	HKP HDJ	312.750 31802.5 312002	342001A 150145	FG2-2

(1) Used in Model 800 only.

(2) Used in Model 290 only.

MICROPHONE

ITEM No.	REPLACEMENT DATA				CONNECTION DATA						
	MFR. PART No.	GC PART No.	GC NOISE CANCEL	GC POWER	GC CONNECTOR	GC Red	GC Shield	GC Yellow	GC Blue	GC White	GC Black
MIC	ZG-AAZ60114	18-032	18-034	18-010	18-092	1	2	4	3	NC	2

MISCELLANEOUS

ITEM No.	PART NAME	PART No.	NOTES
CF1	Ceramic Filter	FB-R455A13M(1)	455kHz
CR1	Ceramic Filter	FB-RU55A08M(2)	455kHz
J1	Component Combination Jack	CR-E471A01M(2)	AC Isolation (470pF/2.5Meg-4Meg)
J2	Jack	YJ-C02S009Z(1)	Antenna
J3	Jack	YJ-C02S002Z(2)	Antenna
J4	Jack	YJ-Z04S002Z	Microphone
J5	Jack	YJ-T03S003Z	PA
J6	Jack	YJ-T03S003Z	External Speaker
J7	Jack	YJ-B02S007Z(1)	DC
LED301	LED	YJ-B02S009Z(2)	DC
M1	Meter	YJ-A02S001U(2)	AC
PL1	Lamp	YJ-T03S018Z(2)	Headphone
PL2	Lamp	QL-#SL1222C(1)	Channel Indicator-Common Cathode
PL3	Lamp	QL-#SL1221C(2)	Channel Indicator-Common Anode
S1	Switch	ZM-J2030N06(1)	S/RF
S2	Switch	ZM-J2050N02(2)	S/RF
S3	Switch	ZP-A064101U(1)	TX (4.73V @ 32mA)
S4	Switch	ZP-A066102U(2)	Meter (5.46V @ 50mA)
S5	Switch	ZP-A066102U(1)	Meter (4.98V @ 50mA)
S6	Switch	ZP-A064102U(2)	RX (4.75V @ 32mA)
SW1	Switch	ZP-A064102U(2)	TX (4.73V @ 32mA)
X1	Crystal	SS-020310ZA	Power (Part of Volume Control)
X2	Crystal	(1)	Delta Tune
		SS-020220ZL(2)	PA (Part of Squelch Control)
		SS-020220ZL(2)	ANL
		SS-020220ZL(1)	NB
		SS-020220ZL(2)	NB/ANL
		(2)	Tone
		SR-2240303H(1)	PA (Part of Squelch Control)
		SR-2240302H(2)	Channel Selector
		XA-S1B9001T(1)	Channel Selector
		XA-S1C2001T(2)	10.240MHz
		XA-S1B9002T(1)	10.240MHz
		XA-S1C2002T(2)	10.695MHz
			10.695MHz

(1) Used in Model 290.

(2) Used in Model 800.

CABINETS & CABINET PARTS (When ordering specify model, chassis & color)

ITEM	PART No.	ITEM	PART No.
MODEL 290		MODEL 800	
Escutcheon	AM-CLT29001	Escutcheon	AM-CLT80001
Knob, Control	MN-276AA069	Knob, Control	MN-276AA069
Knob, Channel Selector	MN-276AA070	Knob, Channel	MN-276AA080
Cabinet Top	MU-773SM028	Cabinet Top	MU-887SM002
Cabinet Bottom	MU-773SM029	Cabinet Bottom	MS-886S2028
Mounting Bracket	MU-276SW001		
Microphone Hanger	MZ-331SZ002		

WIRING DATA

General-use Hook-up Wire (available in 5 colors)	BELDEN No. 8523	Coiled Microphone Cable	
Shielded Hook-up Wire (spiral wrapped)	BELDEN No. 8421	3-conductor (1 shielded) 23AWG	BELDEN No. 9471 (5')
(braided)	BELDEN No. 8401		BELDEN No. 8497 (6')
Speaker Cable (available in 4 colors)	BELDEN No. 8782		BELDEN No. 9472 (7-1/2')
Bonding Strap	BELDEN No. 8672	28AWG	BELDEN No. 9466 (6')
AC Power Cord	(6') BELDEN No. 17106	31AWG	BELDEN No. 9468 (10')
	(9') BELDEN No. 17109	4-conductor (unshielded) 23AWG	BELDEN No. 8415 (6')
		5-conductor (1 shielded) 28AWG	BELDEN No. 9467 (6')
			BELDEN No. 9465 (7-1/2')