



PHOTOFACT[®] with

CIRCUITRACE[®]

For Supplier Address See PHOTOFACT Index

NOTE

ONLY THOSE PERSONS PROPERLY LICENSED ARE PERMITTED TO MAKE REPAIRS OR ADJUSTMENTS WHICH MAY RESULT IN ILLEGAL OPERATION. (REFER TO FCC RULES AND REGULATIONS PART 95, SUBPARTS C & D.)

The frequency of the transmitter should be checked periodically with a secondary frequency standard to insure proper and legal operation.

Best results will be obtained when adjusting the final RF output circuit if the antenna normally used is connected and the chassis is as nearly in the cabinet as possible.

Connect either 50-ohm dummy load or the normally used antenna system.



MODEL Cobra 20

ALIGNMENT INSTRUCTIONS

Suggested Alignment Tools: GC ELECTRONICS
 T1 thru T10, L3#9087, 9089
 T11, T12#9440

B & K MODEL COBRA 20

RECEIVER

Connect an AC VTVM across speaker voice coil. Set SQUELCH control fully counterclockwise. Adjust VOLUME control for suitable reading. Set ANL off, SCAN off.

SIGNAL GENERATOR	CHANNEL	ADJUST	REMARKS
High side thru .01mfd to C , base of Q4 (2nd mixer), low side to B . Set to 455kHz (Mod.)	Any	T5, T4	Adjust for maximum.
High side thru .01mfd to antenna connector, low side to chassis. Set to 27.085MHz. (Mod.)	Any	T3, T2, T1	Adjust for maximum.
High side thru .01mfd to antenna connector, low side to chassis. Set to 27.085MHz. (Mod.)	Any	R17	Adjust for desired "S" meter reading.
High side thru .01mfd to antenna connector, low side to chassis. Set to 27.085MHz. (Mod.)	Any	R82	Adjust for desired squelch range.

HOWARD W. SAMS & CO., INC. Indianapolis, Indiana 46206

© 1973 Howard W. Sams & Co., Inc.

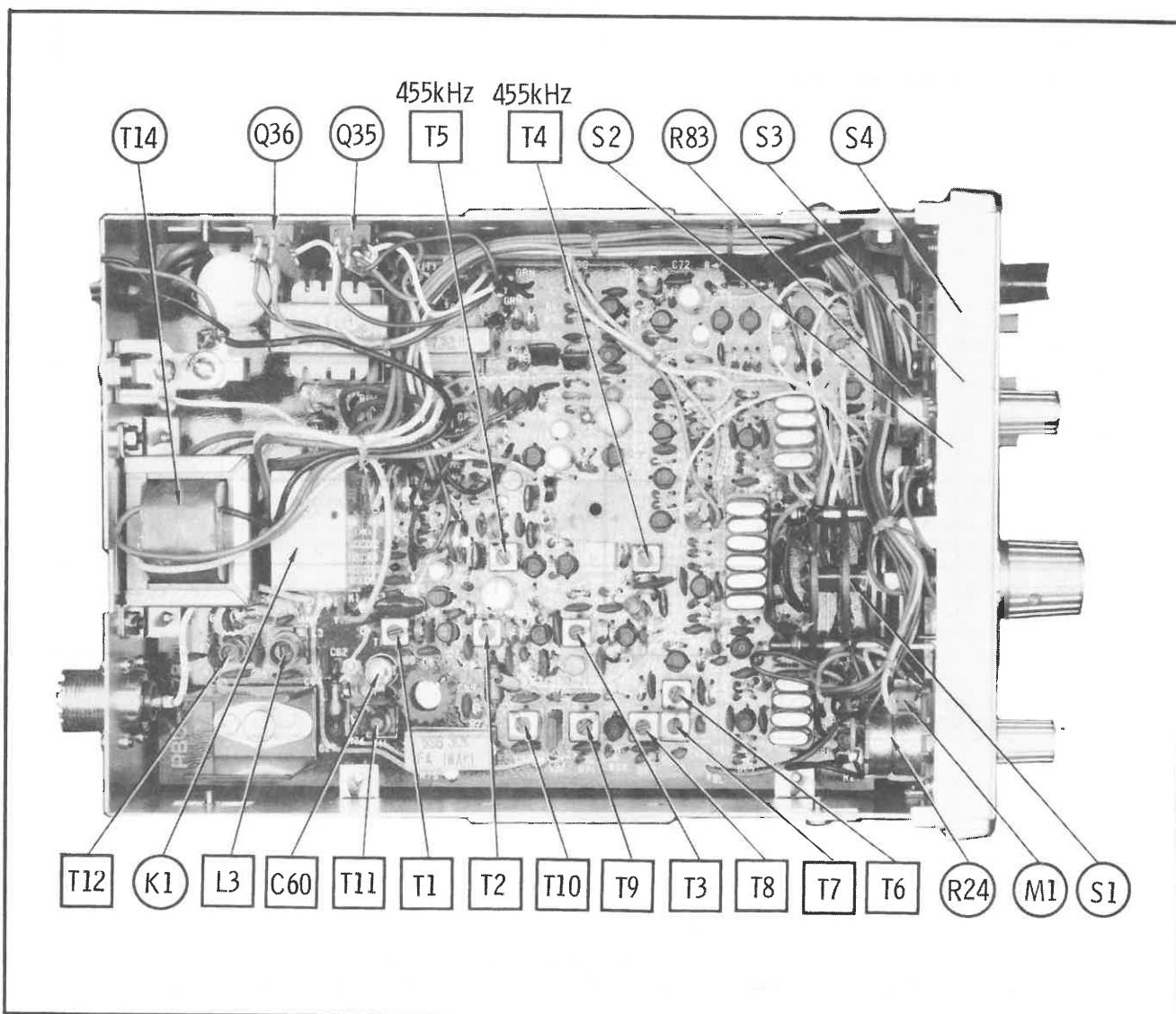
Printed in U. S. of America

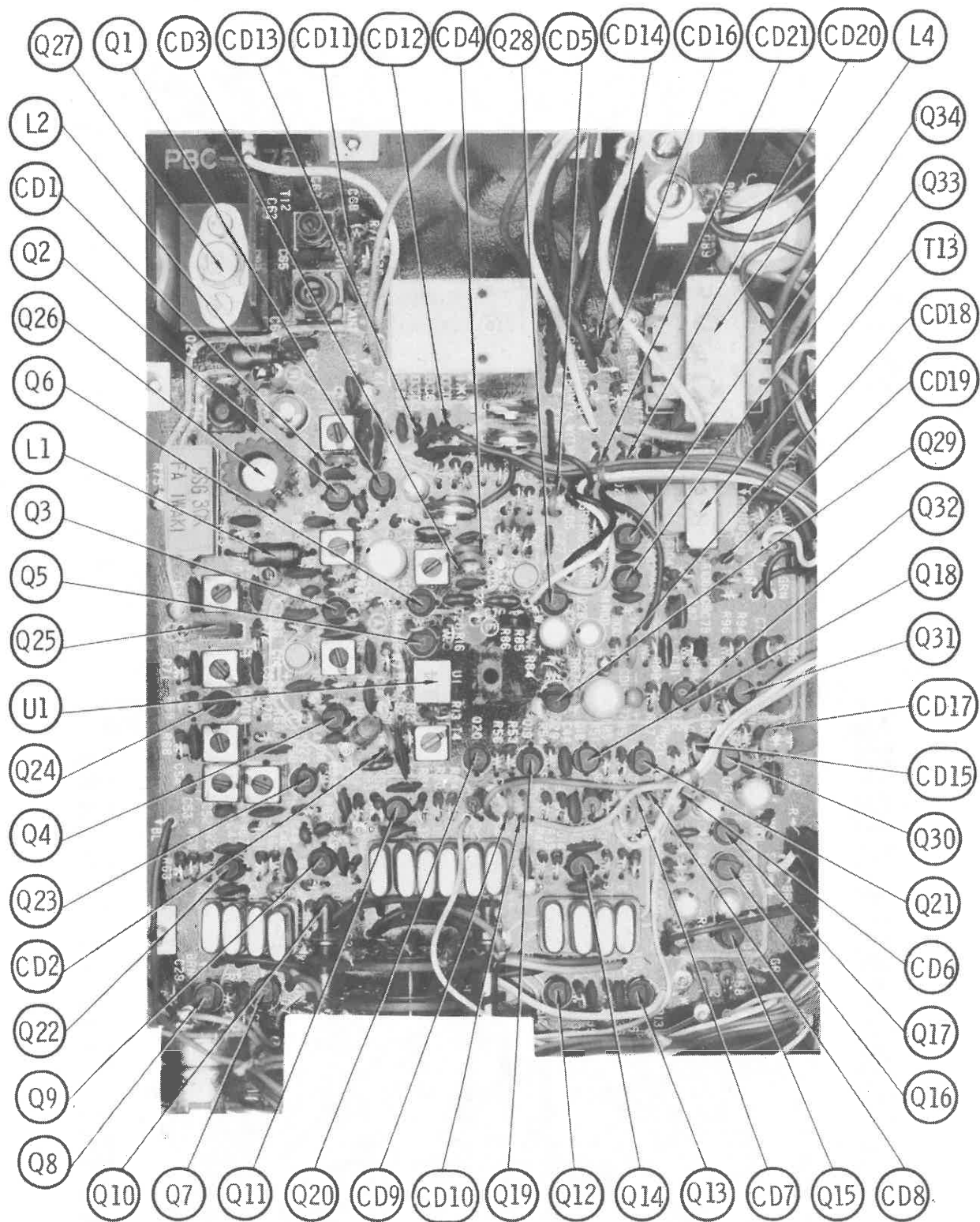
3CY111

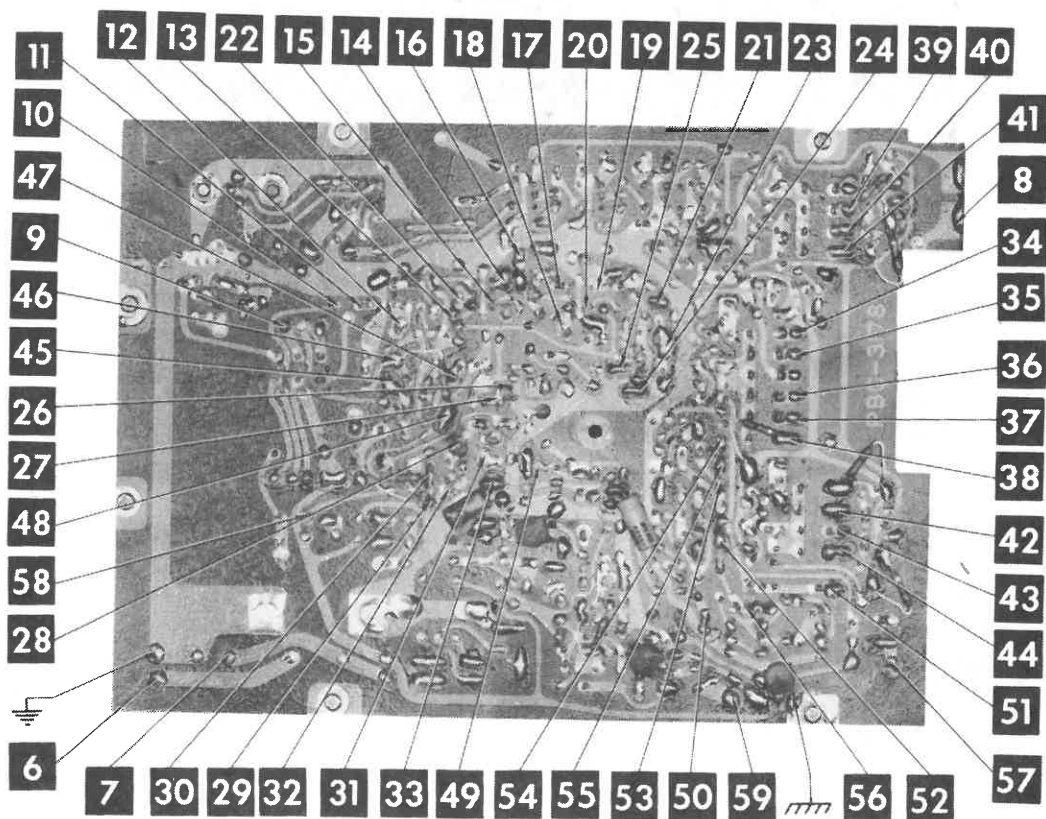
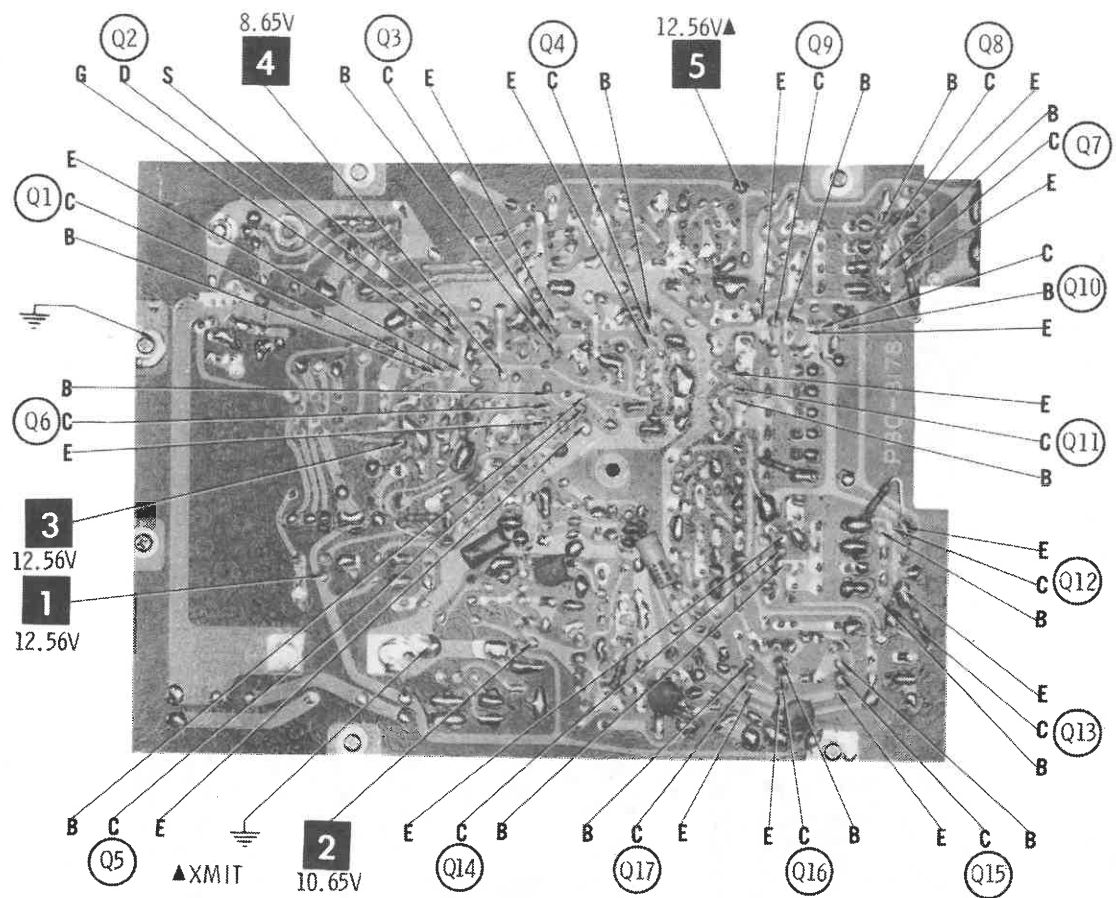
ALIGNMENT INSTRUCTIONS (Continued)

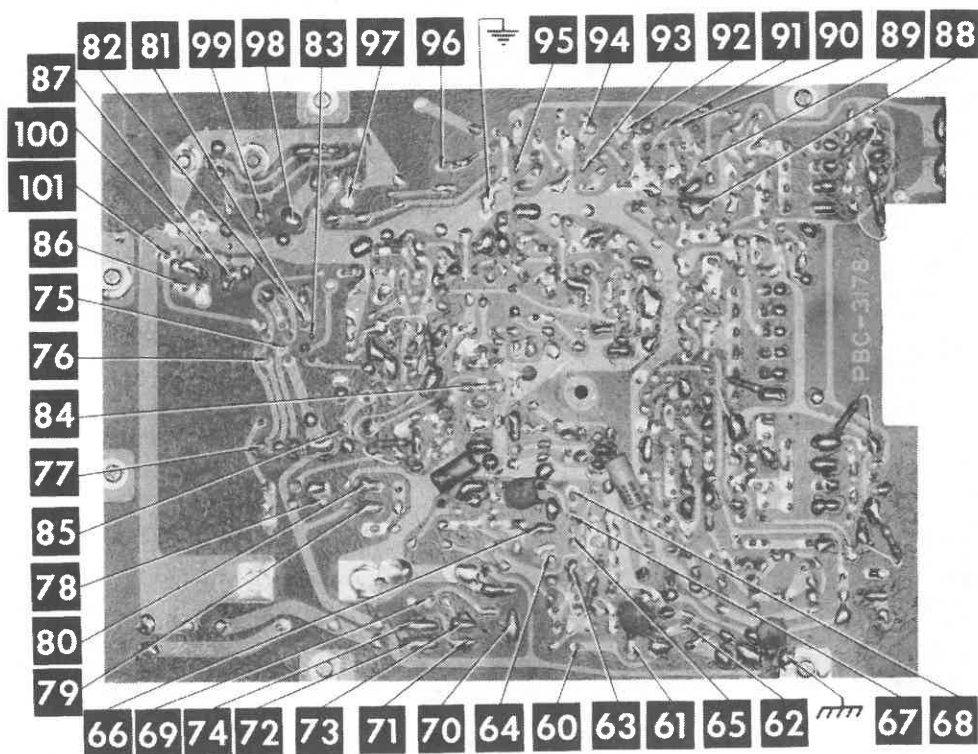
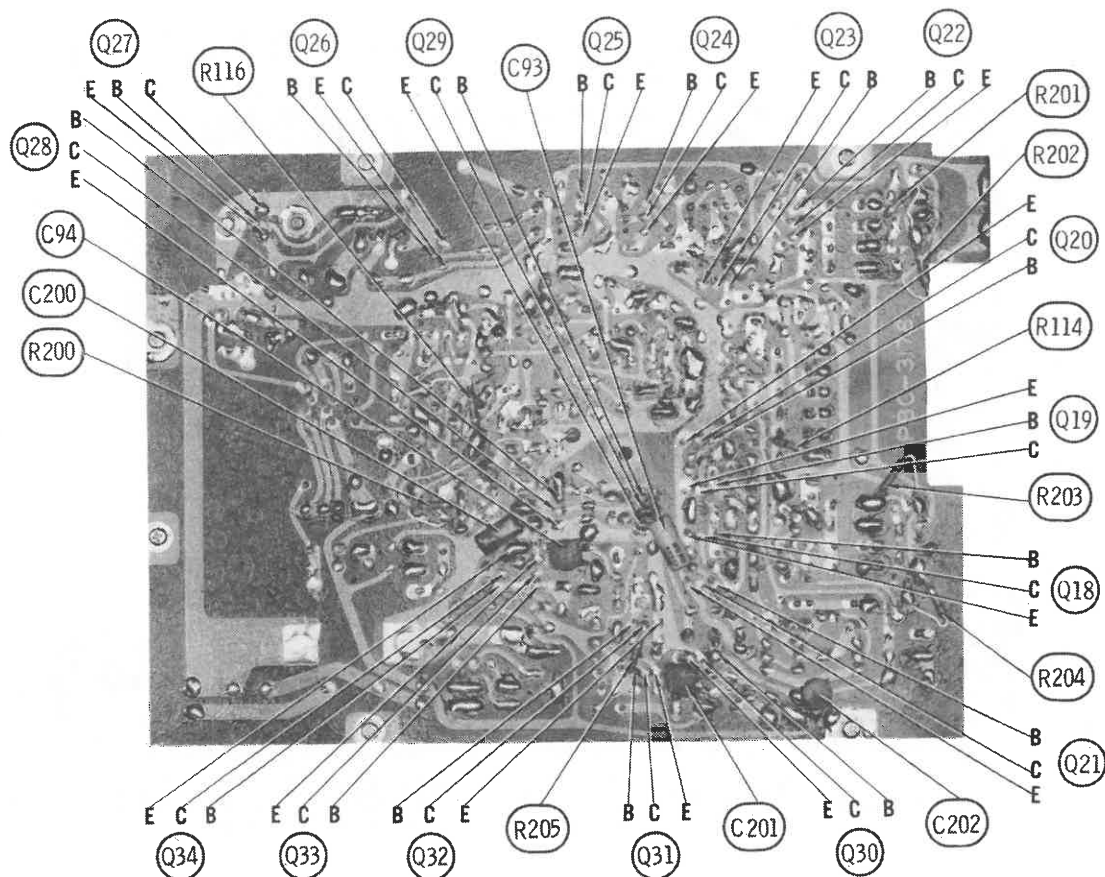
TRANSMITTER

INDICATOR	ADJUST	REMARKS
Connect an RF Wattmeter between antenna connector and dummy load.	L3, T11, T10	Key transmitter; adjust for maximum.
Connect an RF Wattmeter between antenna connector and dummy load.	T8, T7, T6	Reduce power supply voltage until RF output is about 1 watt. Adjust for equal output on all channels. Return power supply voltage to normal.
Connect an RF Wattmeter between antenna connector and dummy load. Unsolder test point H and insert 0-500ma. DC ammeter (base of RF final amp. Q27).	C60	Adjust for 5 watts input.
Connect an RF Wattmeter between antenna connector and dummy load.	R78	Adjust for desired RF meter reading.
Television (Ch. 2)	T12	Adjust for MINIMUM interference.

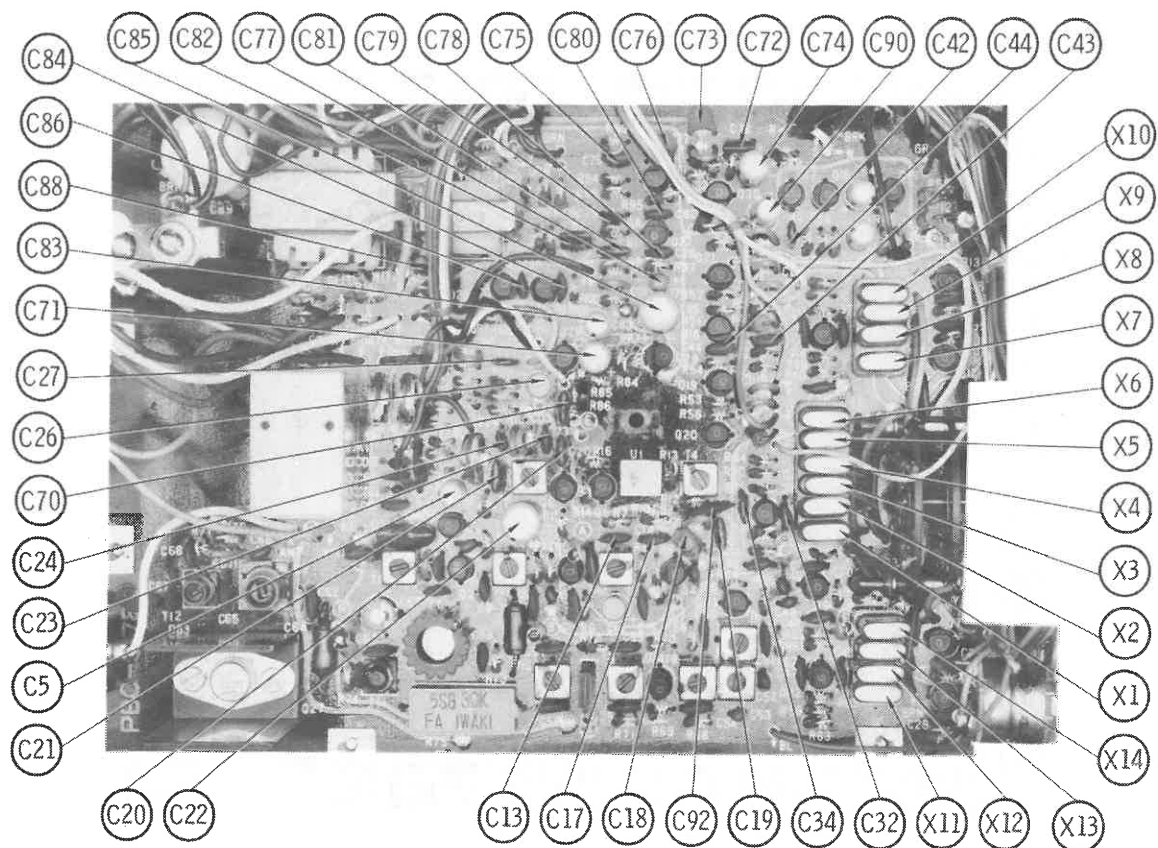
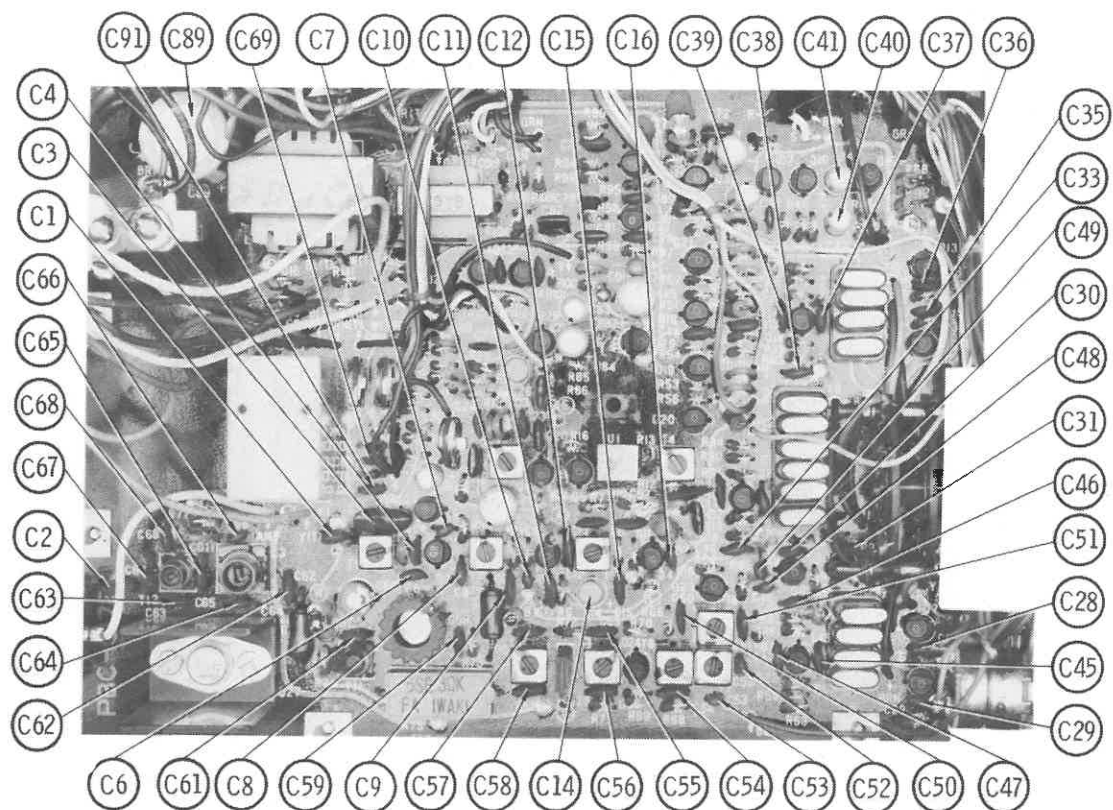


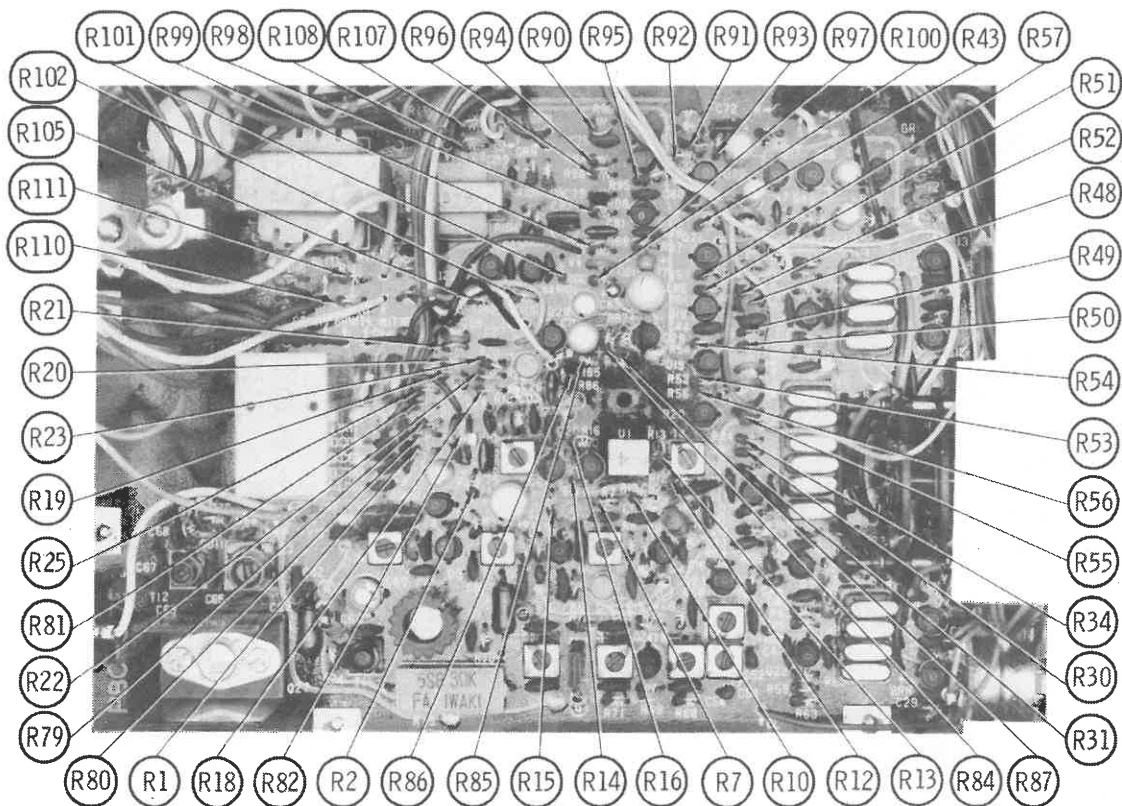
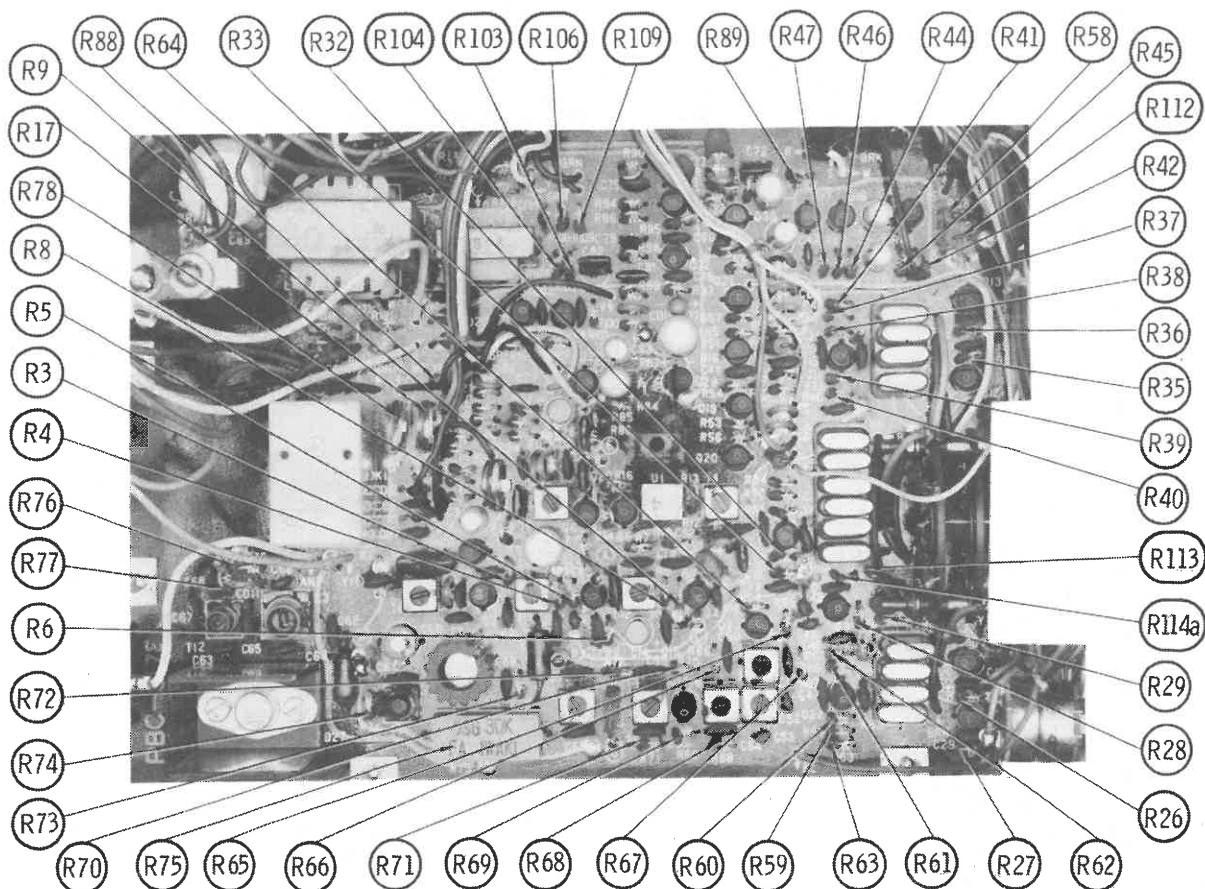


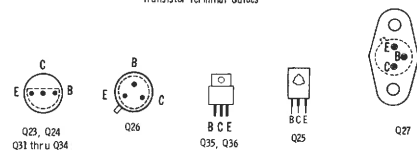




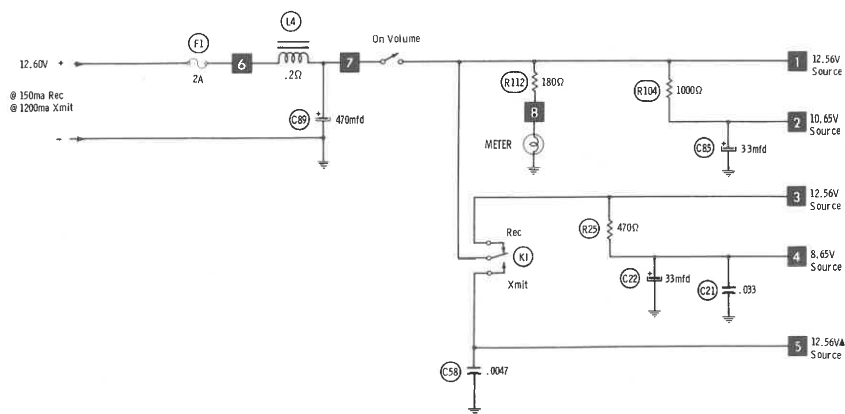
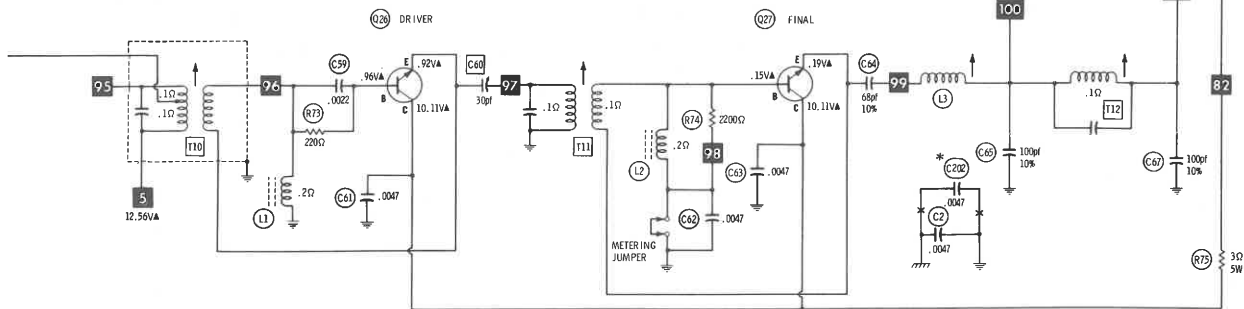
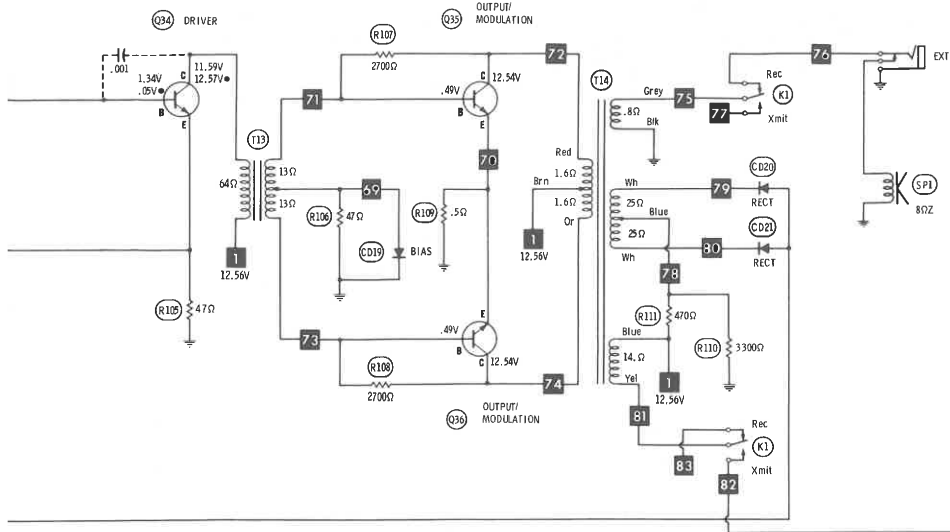
B & K MODEL COBRA 20







A PHOTOFACIT STANDARD NOTATION SCHEMATIC
with **CIRCUITACE**
© Howard W. Sams & Co., Inc. 1973



B & K MODEL COBRA 20

PARTS LIST AND DESCRIPTION

(When ordering parts, state Model, Part Number, and Description.)

SEMICONDUCTORS

ITEM No.	TYPE / MFR. No. / PART No.	REPLACEMENT DATA						
		GENERAL ELECTRIC PART No.	INTERNATIONAL RECTIFIER PART No.	MALLORY PART No.	MOTOROLA PART No.	RCA PART No.	SPRAGUE PART No.	SYLVANIA PART No.
CD1	1S1555/ 151-030-9-001	GE-300	D200	PTC214	HEPR0600	SK3100	RT218	ECG 177
CD2	1S1555/ 151-030-9-001	GE-300	D200	PTC214	HEPR0600	SK3100	RT218	ECG 177
CD3	1S1555/ 151-030-9-001	GE-300	D200	PTC214	HEPR0600	SK3100	RT218	ECG 177
CD4	1S1555/ 151-030-9-001	GE-300	D200	PTC214	HEPR0600	SK3100	RT218	ECG 177
CD5	1S1555/ 151-030-9-001	GE-300	D200	PTC214	HEPR0600	SK3100	RT218	ECG 177
CD6	1S1555/ 151-030-9-001	GE-300	D200	PTC214	HEPR0600	SK3100	RT218	ECG 177
CD7	1S1555/ 151-030-9-001	GE-300	D200	PTC214	HEPR0600	SK3100	RT218	ECG 177
CD8	1S1555/ 151-030-9-001	GE-300	D200	PTC214	HEPR0600	SK3100	RT218	ECG 177
CD9	1S1555/ 151-030-9-001	GE-300	D200	PTC214	HEPR0600	SK3100	RT218	ECG 177
CD10	1S1555/ 151-030-9-001	GE-300	D200	PTC214	HEPR0600	SK3100	RT218	ECG 177
CD11	1S1555/ 151-030-9-001	GE-300	D200	PTC214	HEPR0600	SK3100	RT218	ECG 177
CD12	S3016R/ 151-030-9-006	GE-300	D200	PTC214	HEPR0600	SK3100	RT218	ECG 177
CD13	S3016R/ 151-030-9-006	GE-300	D200	PTC214	HEPR0600	SK3100	RT218	ECG 177
CD14	1S1885/ 151-030-9-005	GE-504A	8D4	PTC201	HEPR0052	SK3030	RT213	ECG 116
CD15	1S1885/ 151-030-9-005	GE-504A	8D4	PTC201	HEPR0052	SK3030	RT213	ECG 116
CD16	1S1885/ 151-030-9-005	GE-504A	8D4	PTC201	HEPR0052	SK3030	RT213	ECG 116
CD17	1S1555/ 151-030-9-001	GE-300	D200	PTC214	HEPR0600	SK3100	RT218	ECG 177
CD18	1S1555/ 151-030-9-001	GE-300	D200	PTC214	HEPR0600	SK3100	RT218	ECG 177
CD19	S3016R/ 151-030-9-006	GE-300	D200	PTC214	HEPR0600	SK3100	RT218	ECG 177
CD20	1S1885/ 151-030-9-005	GE-504A	8D4	PTC201	HEPR0052	SK3030	RT213	ECG 116
CD21	1S1885/ 151-030-9-005	GE-504A	8D4	PTC201	HEPR0052	SK3030	RT213	ECG 116
Q1	2SC372(0)/ 176-029-9-001	GE-20	TR-24	PTC139	HEP724	SK3038	RT102	ECG 123A
Q2	2SK19(GR)/ 182-009-9-001	GE-FET-2	FE-100	PTC152	HEPF0021	SK3116	RT175	ECG 132
Q3	2SC372(0)/ 176-029-9-001	GE-20	TR-24	PTC139	HEP724	SK3038	RT102	ECG 123A
Q4	2SC372(0)/ 176-029-9-001	GE-20	TR-24	PTC139	HEP724	SK3038	RT102	ECG 123A
Q5	2SC372(0)/ 176-029-9-001	GE-20	TR-24	PTC139	HEP724	SK3038	RT102	ECG 123A
Q6	2SC372(0)/ 176-029-9-001	GE-20	TR-24	PTC139	HEP724	SK3038	RT102	ECG 123A
Q7	2SC372(0)/ 176-029-9-001	GE-20	TR-24	PTC139	HEP724	SK3038	RT102	ECG 123A
Q8	2SC372(0)/ 176-029-9-001	GE-20	TR-24	PTC139	HEP724	SK3038	RT102	ECG 123A
Q9	2SC372(0)/ 176-029-9-001	GE-20	TR-24	PTC139	HEP724	SK3038	RT102	ECG 123A
Q10	2SC372(0)/ 176-029-9-001	GE-20	TR-24	PTC139	HEP724	SK3038	RT102	ECG 123A
Q11	2SC372(0)/ 176-029-9-001	GE-20	TR-24	PTC139	HEP724	SK3038	RT102	ECG 123A
Q12	2SC372(0)/ 176-029-9-001	GE-20	TR-24	PTC139	HEP724	SK3038	RT102	ECG 123A
Q13	2SC372(0)/ 176-029-9-001	GE-20	TR-24	PTC139	HEP724	SK3038	RT102	ECG 123A
Q14	2SC372(0)/ 176-029-9-001	GE-20	TR-24	PTC139	HEP724	SK3038	RT102	ECG 123A
Q15	2SC372(0)/ 176-029-9-001	GE-20	TR-24	PTC139	HEP724	SK3038	RT102	ECG 123A
Q16	2SC372(0)/ 176-029-9-001	GE-20	TR-24	PTC139	HEP724	SK3038	RT102	ECG 123A
Q17	2SC372(0)/ 176-029-9-001	GE-20	TR-24	PTC139	HEP724	SK3038	RT102	ECG 123A
Q18	2SC372(0)/ 176-029-9-001	GE-20	TR-24	PTC139	HEP724	SK3038	RT102	ECG 123A
Q19	2SC372(0)/ 176-029-9-001	GE-20	TR-24	PTC139	HEP724	SK3038	RT102	ECG 123A
Q20	2SC372(0)/ 176-029-9-001	GE-20	TR-24	PTC139	HEP724	SK3038	RT102	ECG 123A
Q21	2SC372(0)/ 176-029-9-001	GE-20	TR-24	PTC139	HEP724	SK3038	RT102	ECG 123A
Q22	2SC372(0)/ 176-029-9-001	GE-20	TR-24	PTC139	HEP724	SK3038	RT102	ECG 123A
Q23	2SC372(0)/ 176-029-9-001	GE-20	TR-24	PTC139	HEP724	SK3038	RT102	ECG 123A
Q24	2SC372(0)/ 176-029-9-001	GE-20	TR-24	PTC139	HEP724	SK3038	RT102	ECG 123A
Q25	2SC495(0)/ 176-029-9-004	GE-20	TR-24	PTC139	HEP724	SK3038	RT102	ECG 123A

PARTS LIST AND DESCRIPTION (CONTINUED)

(When ordering parts, state Model, Part Number, and Description.)

SEMICONDUCTORS (cont)

SEMICONDUCTORS (cont.)

REPLACEMENT DATA								
ITEM No.	TYPE / MFR. No. / PART No.	GENERAL ELECTRIC PART No.	INTERNATIONAL RECTIFIER PART No.	MALLORY PART No.	MOTOROLA PART No.	RCA PART No.	SPRAGUE PART No.	SYLVANIA PART No.
Q26	2SC482(Y) / 176-029-9-002	GE-20	IRTR-65	PTC139	HEP75	SK3048	RT102	ECG 195
Q27	2SC517 / 172-009-9-001				HEPS3001	SK3049		ECG 224
Q28	2SC372(O) / 176-029-9-001				HEP724	SK3048		ECG 123A
Q29	2SC372(O) / 176-029-9-001	GE-20	TR-24	PTC139	HEP724	SK3048	RT102	ECG 123A
Q30	2SA562(O) / 177-006-9-002	GE-67	TR-28	PTC127	HEP242	SK3025	RT115	ECG 129
Q31	2SC732(BL) / 176-031-9-002	GE-62	IRTR-51	PTC123	HEP730	SK3114	RT115	ECG 199
Q32	2SA495(O) / 177-006-9-001	GE-21	TR-30	PTC103	HEP715			ECG 159
Q33	2SC732(BL) / 176-031-9-002	GE-62	IRTR-51	PTC123	HEP730			ECG 199
Q34	2SC735(O) / 176-031-9-001	GE-18	TR-21	PTC110	HEP243	SK3020	RT156	ECG 128
Q35	2SD235(Y) / 172-010-9-001	GE-28	IRTR-92		HEPS3023	SK3054	RT154	ECG 152
Q36	2SD235(Y) / 172-010-9-001	GE-28	IRTR-92		HEPS3023	SK3054	RT154	ECG 186

B & K MODEL COBRA 20

ELECTROLYTIC CAPACITORS

ELECTROLYTIC CAPACITORS									
ITEM No.	RATING		REPLACEMENT DATA						
			MFGR. PART No.	ARCO PART No.	CENTRALAB PART No.	CORNELL-DUBILIER PART No.	MALLORY PART No.	SPRAGUE PART No.	
C5	10	16V	022-076-9-003	RME-B-E-010	EP15-10	PC10-25	VTT10A25	EV-1222	
C14	3.3	16V	022-076-9-002	RME-A-H-003	EP30-5	WBR5-50	VTT3R3A50	EV-1618	
C22	33	16V	022-076-9-005	ME-3-E-035	EP15-25	PC30-25	MTV30CB25	EV-1325	
C40	1	16V	022-076-9-001	RME-A-H-003	EP30-5	WBR5-50	VTT3R3A50	EV-1618	
C40	1	16V	022-076-9-001	RME-A-E-001	EP15-2	PC1-50	MTV1CB50	EV-1315	
C41	1	16V	022-076-9-001	RME-A-E-001	EP15-2	PC1-50	MTV1CB50	EV-1315	
C71	33	6.3V	022-076-9-004	ME-3-D-035	EP15-25	PC30-25	VTT33A10	EV-1125	
C74	33	6.3V	022-076-9-004	ME-3-D-035	EP15-25	PC30-25	VTT33A10	EV-1125	
C77	33	3V	027-005-9-001	RME-A-E-001 ME-3-E-035	EP15-2 EP15-25	TYR13BB336K	TDC336M010FL	SD6-339	
C83	1	16V	022-076-9-001			PC1-50	MTV1CB50	EV-1315	
C85	33	16V	022-076-9-005			PC30-25	MTV30CB25	EV-1325	
C88	33	3V	027-005-9-001	RME-N-G-500 RME-A-E-001 RME-B-E-010	EP15-2 EP15-10	TYR13BB336K	TDC336M010FL	SD6-339	
C89	470	25V	022-076-9-007			WBR500-25	TC2505C	EV-1350	
C90	1	16V	022-076-9-001			PC1-50	MTV1CB50	EV-1315	
C93	10	16V	022-076-9-003	RME-B-E-010	EP15-10	PC10-25	VTT10A25	EV-1222	

* Not normally in distributor's stock. Available thru distributor on order to manufacturer.

CAPACITORS

ITEM No.	RATING	MFR. PART No.	REPLACEMENT DATA				
			ARCO/ELMENC0 PART No.	CENTRALAB PART No.	CORNELL-DUBILIER PART No.	MALLORY PART No.	SPRAGUE PART No.
C1	100 10%	020-088-9-005	CC0-101	DTZ-100	NP0100	CN0310	10TCC-T10
C2	.0047 50V		CCD-502	CK-502	MGP005	TA250	TG-D50
C3	.1		1DP-2-104	DD-202	GP2000	EWFO5010	431P1049R5
C4	.0022		CCD-202			GP220	2SS-D20
C6	.0022		CCD-202			GP220	2SS-D20
C7	1		CCD-202, CCD-502	DD-202	GP2000	CN0510	10TCC-V10
C8	.0022					GP220	2SS-D20
C9	.0047					TA250	TG-D50
C10	5		CCD-502	CK-502	MGP005	NP05	10TCC-V50
C11	.0047					TA250	TG-D50
C12	180 N470					*	10TCT-T18
C13	.0047		CCD-502	CK-502	MGP005	TA250	TG-D50
C15	.0047		CCD-502	CK-502	MGP005	TA250	TG-D50
C16	5		CCD-502	CK-502	NP05	TA250	10TCC-V50

PARTS LIST AND DESCRIPTION (CONTINUED)

(When ordering parts, state Model, Part Number, and Description.)

CAPACITORS (cont)

ITEM No.	RATING			MFR. PART No.	REPLACEMENT DATA				
					ARCO/ELMENCO PART No.	CENTRALAB PART No.	CORNELL-DUBILIER PART No.	MALLORY PART No.	SPRAGUE PART No.
C17	.0047				CCD-502	CK-502	MGP005	TA250	TG-D50
C18	470	50V	10%		DM-16-471	CPR-470J	CD15F471J500	SX347	MS-347
C19	.033	50V			1DP-1-333			EWFI1A133	1PB-S33
C20	.033	50V			1DP-1-333			EWFI1A133	1PB-S33
C21	.033	50V			1DP-1-333			EWFI1A133	1PB-S33
C23	.0022				CCD-202	DD-202	GP2000	GP220	2SS-D20
C24	.01	50V			1DP-1-103			EWFI1A110	1PB-S10
C27	.01	50V			1DP-1-103			EWFI1A110	1PB-S10
C28	.0022				CCD-202	DD-202	GP2000	GP220	2SS-D20
C29	.0022				CCD-202	DD-202	GP2000	GP220	2SS-D20
C30	.0022				CCD-202	DD-202	GP2000	GP220	2SS-D20
C31	.0022				CCD-202	DD-202	GP2000	GP220	2SS-D20
C32	47	10%			CCTO-470	DTZ-47	NP047	CN0447	10TCC-Q47
C33	47	10%			CCTO-470	DTZ-47	NP047	CN0447	10TCC-Q47
C34	.0047				CCD-502	CK-502	MGP005	TA250	TG-D50
C35	.0022				CCD-202	DD-202	GP2000	GP220	2SS-D20
C36	.0022				CCD-202	DD-202	GP2000	GP220	2SS-D20
C37	100	10%			CCTO-101	DTZ-100	NP0100	CN0310	10TCC-T10
C38	47	10%			CCTO-470	DTZ-47	NP047	CN0447	10TCC-Q47
C39	.0047				CCD-502	CK-502	MGP005	TA250	TG-D50
C42	.0068	50V			1DP-1-682			EWFI1A268	1PB-D68
C43	470				CCD-471	DD-471	GP470	GP347	10TS-T47
C44	470				CCD-471	DD-471	GP470	GP347	10TS-T47
C45	100	10%			CCTO-101	DTZ-100	NP0100	CN0310	10TCC-T10
C46	47	10%			CCTO-470	DTZ-47	NP047	CN0447	10TCC-Q47
C47	.0047				CCD-502	CK-502	MGP005	TA250	TG-D50
C48	3								10TCC-V30
C49	5						NP05		10TCC-V50
C50	.0047				CCD-502	CK-502	MGP005	TA250	TG-D50
C51	.0047				CCD-502	CK-502	MGP005	TA250	TG-D50
C52	2					DTZ-2R2	NP02P2	CN0522	10TCC-V22
C53	2					DTZ-2R2	NP02P2	CN0522	10TCC-V22
C54	.0047				CCD-502	CK-502	MGP005	TA250	TG-D50
C55	.0047				CCD-502	CK-502	MGP005	TA250	TG-D50
C56	.0047				CCD-502	CK-502	MGP005	TA250	TG-D50
C57	.0047				CCD-502	CK-502	MGP005	TA250	TG-D50
C58	.0047				CCD-502	CK-502	MGP005	TA250	TG-D50
C59	.0022				CCD-502	CK-502	MGP005	TA250	TG-D50
C60	30			020-088-9-010	CCD-202	DD-202	GP2000	GP220	2SS-D20
C61	.0047				CCD-502	CK-502	MGP005	TA250	TG-D50
C62	.0047				CCD-502	CK-502	MGP005	TA250	TG-D50
C63	.0047				CCD-502	CK-502	MGP005	TA250	TG-D50
C64	68	10%				DTZ-68		CN0468	10TCC-Q68
C65	100	10%			CCTO-101	DTZ-100	NP0100	CN0310	10TCC-T10
C66	22				CCTO-220	DTZ-22	NP022	CN0422	10TCC-Q22
C67	100	10%			CCTO-101	DTZ-100	NP0100	CN0310	10TCC-T10
C68	.0022				CCD-202	DD-202	GP2000	GP220	2SS-D20
C69	.0022				CCD-202	DD-202	GP2000	GP220	2SS-D20
C70	.033	50V			1DP-1-333			EWFI1A133	1PB-S33
C72	.033	50V			1DP-1-333			EWFI1A133	1PB-S33
C73	.0022				CCD-202	DD-202	GP2000	GP220	2SS-D20
C75	470				CCD-471	DD-471	GP470	GP347	10TS-T47
C76	.0022				CCD-202	DD-202	GP2000	GP220	2SS-D20
C78	.0022				CCD-202	DD-202	GP2000	GP220	2SS-D20
C79	.01	50V			1DP-1-103			EWFI1A110	1PB-S10
C80	.0022				CCD-202	DD-202	GP2000	GP220	2SS-D20
C81	.033	50V			1DP-1-333			EWFI1A133	1PB-S33
C82	.033	50V			1DP-1-333			EWFI1A133	1PB-S33
C84	.0022				CCD-202	DD-202	GP2000	GP220	2SS-D20
C86	.0022				CCD-202	DD-202	GP2000	GP220	2SS-D20
C91	.0022				CCD-202	DD-202	GP2000	GP220	2SS-D20
C92	470	N750	10%		CCTN-471		N470		10TCU-T47
C94	.0047				CCD-502	CK-502	MGP005	TA250	TG-D50
C200	.01	50V	10%		1DP-1-103			EWFI1A110	1PB-S10
C201	.0047				CCD-502	CK-502	MGP005	TA250	TG-D50
C202	.0047				CCD-502	CK-502	MGP005	TA250	TG-D50

CONTROLS (All wattages 1/2 watt, or less, unless listed)

ITEM No.	FUNCTION	RESIST-ANCE	REPLACEMENT DATA				
			MFR. PART No.	CENTRALAB PART No.	CLAROSTAT PART No.	CTS-IRC PART No.	MALLORY PART No.
R17	"S" Meter Adjust	50K	008-158-9-008	TSV-50K(1) or T-50K(1)	C-503(1)	X201R503B(1)	MTS54L1(1)
R24	Volume/Switch	50K	008-158-9-007				
R78	"RF" Meter Adjust	100K	008-158-9-003	TSV-100K(1) or T-100K(1)	C-104(1)	X201R104B(1)	MTS15L1(1)
R82	Squelch Range	10K	008-165-9-001	TSV-10K(1) or T-10K(1)	C-103(1)	X201R103B(1)	MTS14L1(1)
R83	Squelch	5000	008-158-9-005				

(1) Cut off one of the end terminals and bend to fit PC board.

PARTS LIST AND DESCRIPTION (CONTINUED)

(When ordering parts, state Model, Part Number, and Description.)

RESISTORS (Power and Special)

ITEM No.	RATING	REPLACEMENT DATA		ITEM No.	RATING	REPLACEMENT DATA	
		WORKMAN PART No.	MFR. PART No.			WORKMAN PART No.	MFR. PART No.
R75	3, 5W, WW		066-005-5-030	R109	.5, 1/4W		004-100-9-001
R86	2150 (Cold)		004-099-9-002				

COILS (RF-IF)

ITEM No.	USE	REPLACEMENT DATA			
		PART No.	MEISSNER PART No.	MILLER PART No.	WORKMAN PART No.
L1	RF Choke (13uh)	042-009-9-001	19-2018	4624	T862
L2	RF Choke (13uh)	042-009-9-001	19-2018	4624	T862
L3	RF Output	044-025-9-002			
T1	Ant. Matching	066-013-9-001			
T2	RF Amp	066-013-9-002			
T3	1st Mixer	066-013-9-003			
T4	Input IF	060-014-9-005	16-9033	8810	
T5	Output IF	060-014-9-004	16-9034	8811	
T6	Xmtr. Mixer (Pri.)	066-013-9-006			
T7	Xmtr. Mixer (Sec.)	066-013-9-007			
T8	Xmtr. Mixer (Ter.)	066-013-9-008			
T9	Xmtr. Buffer	066-013-9-009			
T10	Xmtr. Buffer	066-013-9-009			
T11	Xmtr. Driver	066-013-9-010			
T12	RF Filter	066-013-9-011			

B & K MODEL COBRA 20

FILTER CHOKE

ITEM No.	RATINGS			REPLACEMENT DATA				NOTES
	CURRENT (Measured)	DC RES.	INDUCTANCE (0 CURRENT 1000~)	MFR. PART No.	STANCOR PART No.	THORDARSON PART No.	TRIAD PART No.	
L4	1200ma	.2	2.2mh	042-009-9-002				

TRANSFORMER (Driver)

ITEM No.	TURNS RATIO			REPLACEMENT DATA				NOTES
	PRI.	SEC. 1	SEC. 2	MFR. PART No.	STANCOR PART No.	THORDARSON PART No.	TRIAD Part No.	
T13	2	1CT		068-005-9-001	TA38	TR5		

TRANSFORMER (Audio Output)

ITEM No.	IMPEDANCE		REPLACEMENT DATA				NOTES
	PRI.	SEC.	MFR. PART No.	STANCOR PART No.	THORDARSON PART No.	TRIAD PART No.	
T14	32CT	8	061-019-001				
		SEC. 2					
		DC Resistance 1.4 ohms					
		SEC. 3					
		DC Resistance 50CT					

PARTS LIST AND DESCRIPTION (CONTINUED)

(When ordering parts, state Model, Part Number, and Description.)

SPEAKER

ITEM No.	TYPE	REPLACEMENT DATA		NOTES
		MFGR. PART No.	QUAM PART No.	
SP1	2-1/2" PM, 8 ohms	580-009-9-001		

FUSE DEVICES

ITEM No.	DESCRIPTION	REPLACEMENT DATA					
		PART No.		BUSS PART No.		LITTELFUSE PART No.	
		DEVICE	HOLDER	DEVICE	HOLDER	DEVICE	HOLDER
F1	2A, Quick-Acting	191-251-3-002	742-013-9-001	AGC2	HDJ	312002	150145

MISCELLANEOUS

ITEM No.	PART NAME	PART No.	NOTES
K1	Relay	441-006-9-001	Coil Resistance 175 ohms PWR/S
M1	Meter	320-035-9-001	
MK1	Microphone	562-005-9-001	Channel Selector
S1	Switch	083-121-9-001	
S2	Switch	084-025-9-001	Hold
S3	Switch	084-025-9-001	Scan
S4	Switch	084-025-9-001	AWL
U1	Ceramic Filter	140-006-9-001	455kHz.
X1	Crystal	133-002-9-001	16.965MHz
X2	Crystal	133-002-9-002	17.015MHz
X3	Crystal	133-002-9-003	17.065MHz
X4	Crystal	133-002-9-004	17.115MHz
X5	Crystal	133-002-9-005	17.165MHz
X6	Crystal	133-002-9-006	17.215MHz
X7	Crystal	133-002-9-015	9.545MHz
X8	Crystal	133-002-9-016	9.555MHz
X9	Crystal	133-002-9-017	9.565MHz
X10	Crystal	133-002-9-018	1.585MHz
X11	Crystal	133-002-9-001	10.000MHz
X12	Crystal	133-002-9-012	10.010MHz
X13	Crystal	133-002-9-013	10.020MHz
X14	Crystal	133-002-9-014	10.040MHz

CABINETS & CABINET PARTS (When ordering specify model, chassis & color)

ITEM	PART No.	ITEM	PART No.
Knob, Channel Selector	751-084-9-001	Knob, Volume, Squelch	751-084-9-002

WIRING DATA

General-use Hook-up Wire	Use BELDEN No. 8530 (Solid) Available in 12 Colors
	8524 (Stranded) Available in 12 Colors
Shielded Antenna Lead	Use BELDEN No. 8214 Lowest-loss (RG-8/U Type)
	8237 Low-loss (RG-8/U)
	8240 (Solid) Miniature (RG-58/U)
	8259 (Stranded) Miniature (RG-58A/U)
Coiled Microphone Cable	Use BELDEN No. 8497 3-Conductor, 1 Shielded, for Press-to-Talk (Neoprene)
	8496 3-Conductor, 1 Shielded, for Press-to-Talk (Vinyl)
Ignition Noise Suppression	Use BELDEN No. 7300-Series Spark-Plug Sets
Bonding Strap	Use BELDEN No. 8661 (3/8 In.)