

ALIGNMENT PROCEDURES

1) Tape player

When provided with a test tape.

• Adjustment of azimuth.

- (1) Insert the test tape.
- (2) Select the program No.3.
- (3) Adjust balance control to the extreme right so that the output may come from the right loud-speaker.
- (4) Adjust the azimuth adjustment screw, shown in Fig. 6, so that 7.5KHz sound may become to the maximum in the right loudspeaker.

• Adjustment of height.

- (1) Insert the test tape.
- (2) Select the program No.2.
- (3) Adjust balance control to the medium position. Adjustment volume control to a desired level.
- (4) Turn the height adjustment NUT-HEX in Fig. 5, so that the sounds of No.1 Program and No.3 Program may not be heard.

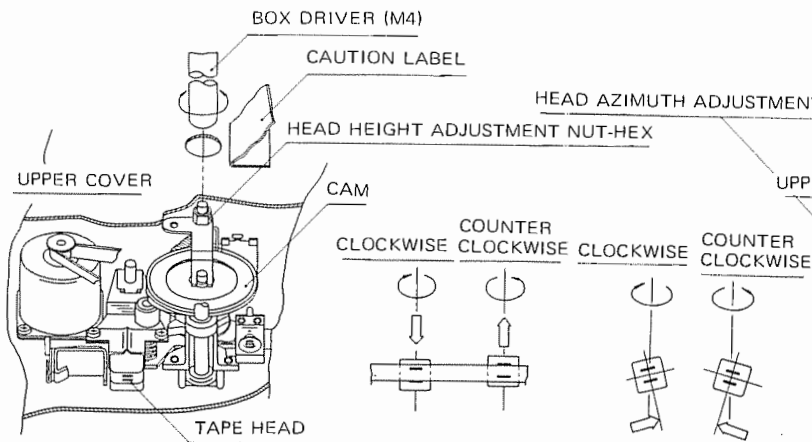


Fig. 5

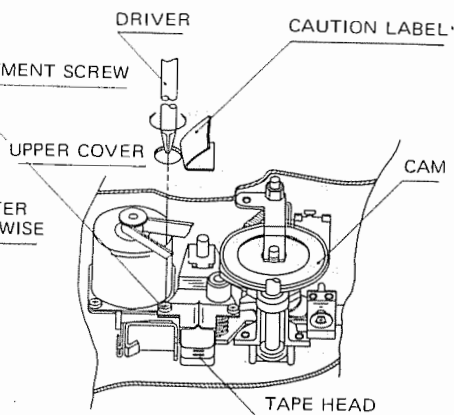
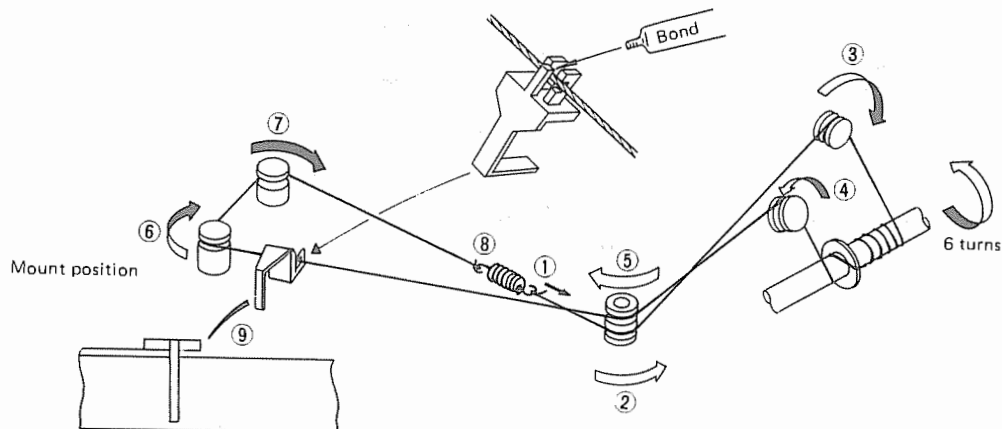


Fig. 6

How to wind dial string

- (a) The winding direction and number of turns of the string should be as illustrated.
- (b) Mount the pointer at the position and in the manner illustrated.



2) FM

STEP	STAGE	CONNECT SIGNAL GENERATOR TO	CONNECT INDICATOR TO	SET SIGNAL SOURCE	SET RADIO DIAL	ADJUST	ADJUST FOR
1	IF	Fig. 7	Fig. 8	10.7 MHz	Point of non-interference	T101 T151 T152	Maximum amplitude and symmetry NOTICE Center frequency be decided at ceramic filter
2						Repeat procedures 1	
3	Discriminator	Fig. 7	Fig. 9	10.7 MHz	Point of non-interference	T153	• Symmetry wave
4						Repeat procedures 3	
5	Oscillator	Fig. 10	Fig. 11	88 MHz	88 MHz	VC103	• Tune in
6				104 MHz	104 MHz	VC103	• Tune in
7	RF	Fig. 10	Fig. 11	96 MHz	96 MHz	VC101 VC102	• Maximum output

CENTER FREQUENCY OF CERAMIC FILTER

COLOR	CENTER FREQUENCY
Black	10.64±0.03 MHz
Blue	10.67± "
Red	10.70± "
Orange	10.73± "
White	10.76± "

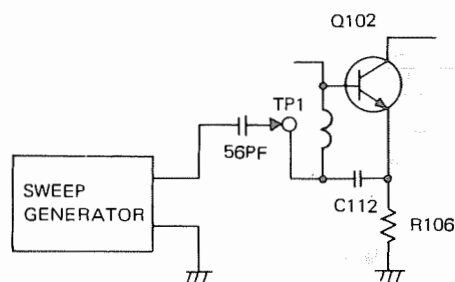


Fig. 7

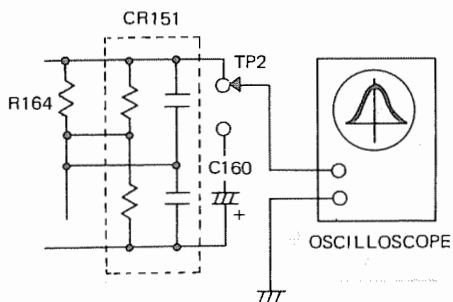


Fig. 8

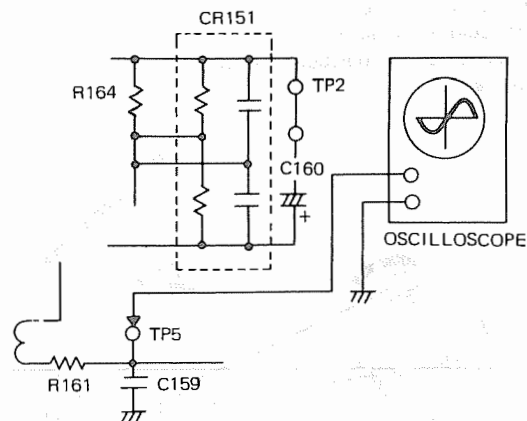


Fig. 9

Chrysler By Mitsubishi Plymouth Sapporo/ Dodge Challenger RS-66SUB-K

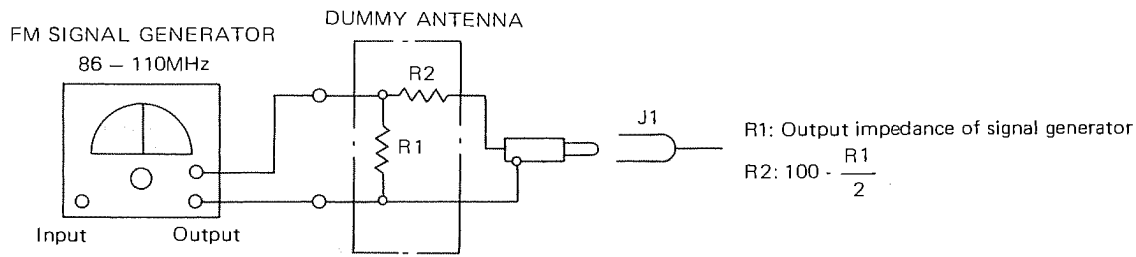


Fig. 10

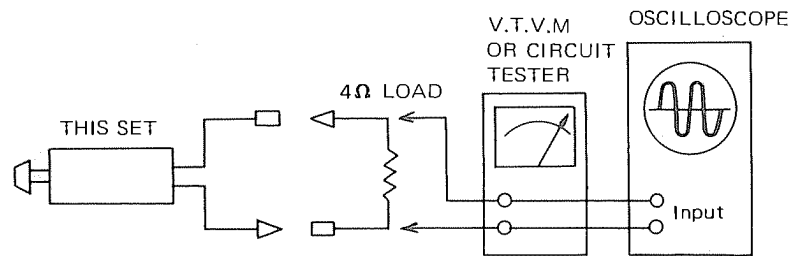


Fig. 11

3) FM STEREO

STEP	STAGE	CONNECT FREQUENCY COUNTER TO	ADJUST	ADJUST FOR
	PLL	Fig 12	VR201	19KHz±0.1KHz

Alternate Method :

Adjust VR201 to turn on stereo indicator lamp, check stereo separation by tuning to a stereo broadcast.

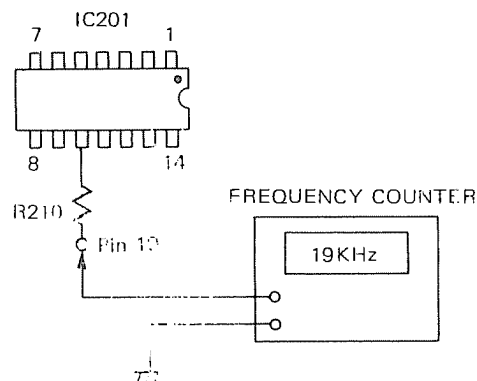


Fig. 12

4) AM

STEP	STAGE	CONNECT SIGNAL GENERATOR TO	CONNECT INDICATOR TO	SET SIGNAL SOURCE	SET RADIO DIAL	ADJUST	ADJUST FOR
1	IF	Fig. 13	Fig. 14	450 KHz (400Hz Mod.)	Point of non interference near 1600 KHz	T2-5	450±3 KHz
2						Repeat procedure 1	
3	Oscillation RF	Fig. 15	Output meter across Voice Coil	1630 KHz	High freq. end stop	VC3	Tune in
4				510 KHz	Low freq. end stop	T1	Tune in
5						Repeat procedure 3-4	
6				1400 KHz	1400 KHz	VC1 VC2	Maximum output
7				"			Repeat procedure 6

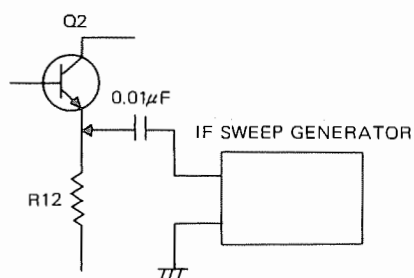


Fig. 13

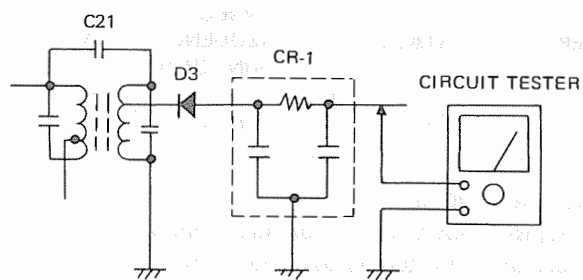


Fig. 14

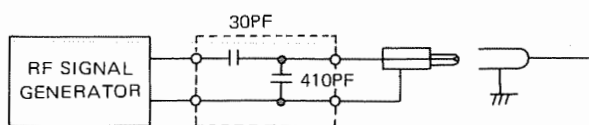
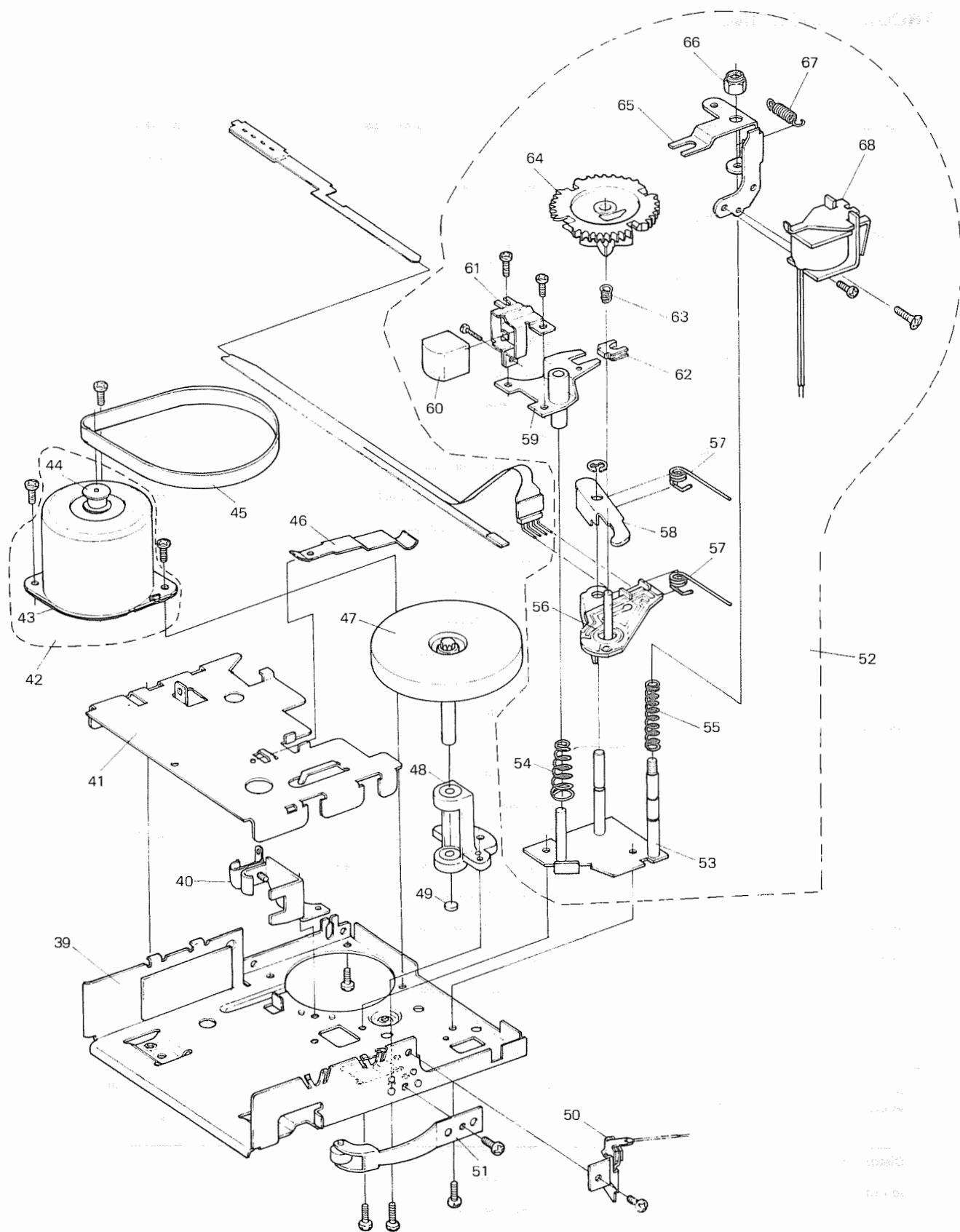


Fig. 15

Chrysler By Mitsubishi Plymouth Sapporo/ Dodge Challenger RS-66SUB-K

TROUBLE SHOOTING

TROUBLES	CIRCUIT	CAUSES	REPAIR
No sound at all	AF amp.	<ul style="list-style-type: none"> • IC302, 402 damaged • IC302, 402 bias resistor open • C317, 417 open • VR303, 403 open • S5-b, c switch damaged 	<ul style="list-style-type: none"> • Replace • " • " • " • "
No sound at player	Pre amp.	<ul style="list-style-type: none"> • IC301 damaged • IC301 bias resistor open • Magnetic head open • C302, 402 open 	<ul style="list-style-type: none"> • Replace • " • " • "
	Motor	<ul style="list-style-type: none"> • Motor short • S5-a switch damaged 	<ul style="list-style-type: none"> • Replace • "
		• Check for mechanical part	• Repair
No sound at radio		<ul style="list-style-type: none"> • S5-b, c switch damaged • R220 open 	<ul style="list-style-type: none"> • Replace • "
No sound at AM section	AM RF, IF	<ul style="list-style-type: none"> • Q1~3 damaged • Q1~3 bias resistor open • Antenna socket short • L1, 4 open • Tuner coil open • D3 damaged • T1~T5 open • CR1 open 	<ul style="list-style-type: none"> • Replace • " • " • " • " • " • " • "
No sound at FM section	FM RF, IF	<ul style="list-style-type: none"> • Q101~103, 151 damaged • Q101~103, 151 bias resistor open • IC151, 201 damaged • CF151, 152 damaged • T101, 151, 152, 153 open • D151, 152 damaged • CR151 open 	<ul style="list-style-type: none"> • Replace • " • " • " • " • " • "
Low sound	AF amp.	• Check for AF amp. circuit	• Repair
FM low sensitivity	FM RF, IF	<ul style="list-style-type: none"> • Misalignment IFT • Check for FM RF, IF circuit 	<ul style="list-style-type: none"> • Readjustment • Repair
Distorted sound		<ul style="list-style-type: none"> • IC302, 402 damaged • IC201 damaged • C204, 318 open 	<ul style="list-style-type: none"> • Replace • " • "



Chrysler By Mitsubishi Plymouth Sapporo/ Dodge Challenger RS-66SUB-K

12. PARTS LIST

In order to expedite delivery of replacement part orders, unless full information is supplied, delay in processing of orders will result.

Specify :
1. Model number
2. Part number and Description
3. Quantity

1) Mechanical Parts

Ref. No.	Part No.	Description	Ref. No.	Part No.	Description
1	590K12002	Upper Cover	39	560K05701	Base Chassis
2	923L28902	Ass'y PWB SW	40	590L51101	Tape Guide
3	590L51401	Holder Deck	41	590L51203	Upper Plate
4	923K16302	Ass'y PWB IF	42	923L12503	Ass'y Motor
5	591M26001	Holder-66	43	288P01901	Motor
6	570M22401	Spring-D	44	630M32802	Motor Pulley
7	590L53601	Lever-SW	45	521M00501	Gum Belt
8	943L38101	Ass'y Holder Pointer	46	570M16301	Upper Clamper
9	253L00601	Lead Lamp	47	524L00502	Flywheel
10	253L00602	"	48	530L00201	Metal Case
11	892K00201	Dial Shutter	49	640D91104	Washer-FW
12	570M22501	Spring Shutter	50	202L00601	C-Trimmed
13	923K16202	Ass'y PWB RF	51	591M18001	Clamper
14	591M25901	Lever SW-B	52	943K25402	Ass'y Head Mecha.
15	295K03902	Tuner	53	943L16801	Ass'y Plate Posts
16	591M16301	Holder-TP	54	570M11001	Spring Head
17	591M19401	Holder-RF	55	570M09601	Spring Fine
18	449L02101	Socket Ant	56	943L37901	Ass'y Gear Posts
19	590L51602	Holder-F	57	570M09502	Spring Trip
20	923L29001	Ass'y FPC LED	58	525M02701	Lever Trip
21	923K16401	Ass'y PWB AF	59	943L16901	Ass'y Base Head
22	923L29201	Ass'y VR-Triple Shaft	60	460L00501	Head
23	129L05302	VR-Triple Shaft	61	590L21802	Band Head
24	591M16201	Washer Axis	62	641M07601	Slider
25	560K05804	Bottom Base	63	570M09701	Spring Gear
26	591M15901	Cover	64	943L26501	Ass'y Cam Gear
27	704M17803	Button DX	65	590M63401	Lever Fine
28	704M19201	Selector	66	679L00201	Nut-U
29	704M19301	Knob-C	67	570M13801	Spring-T
30	704L04401	Knob B-S	68	479L00702	Clutch
31	963L10202	Ass'y Knob A-S	69	590L52301	Heat Sink
32	129L05802	VR-Fader	70	590M93801	Shield Plate
33	241L30602	FPC Fader	71	591M16501	Shield Case
34	590D95401	Cable Clamper	72	591M16601	Shield Cover
35	923L34302	Ass'y Holder-CP	73	704M17502	Button Tuner
36	242L07102	Lead-F	74	702K07401	Panel
37	242L10402	Lead 6 CFM	75	590L54901	Bracket-R
38	242L11501	Lead SP	76	590L55001	Bracket-L

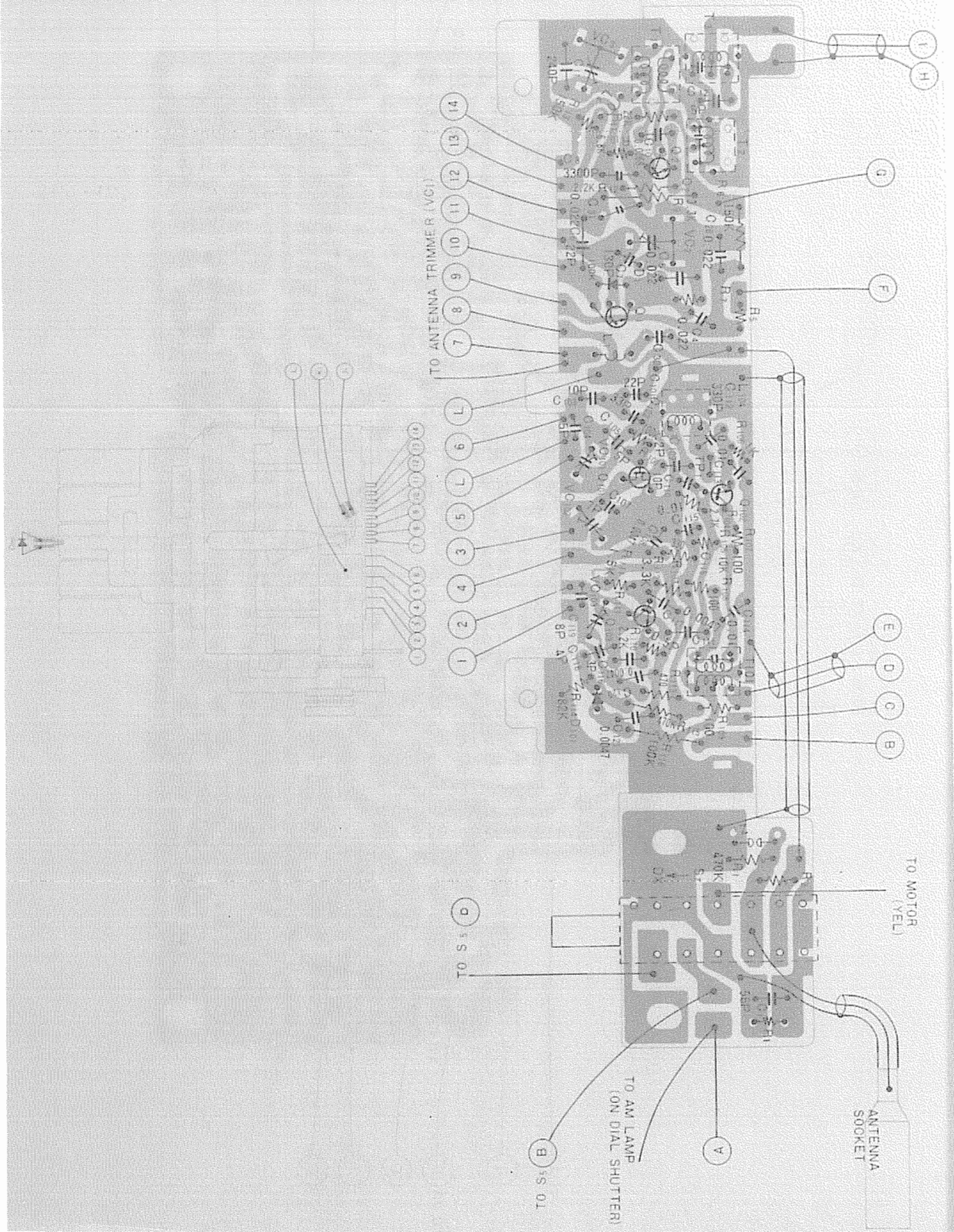
2) Electrical Parts

Ref. No.	Part No.	Description	Ref. No.	Part No.	Description	
RESISTORS			TRANSFORMERS AND COILS			
VR201,301, 302,402 303,403 304,404	127M02101 129L05302 129L05802	VR-Semifixed VR-Triple Shaft VR-Fader	L2,3,4,102, 103,105 104 4 1 F201,202 L9 7 L8 T1 152 153 2,4 3 5 101,151	295K03902 320D04601 351D02103 351L00101 351L00201 351M00201 351P00105 351P00902 373M00102 374C00403 374C00404 374L00101 374L00102 374L00104 374L00201	Tuner Coil Trap Coil Choke Coil Choke Filter Coil Choke Trans Choke Trans Choke Trans OSC Trans IF " " " " "	
CAPACITORS						
VC101~103 1 2,3	202L00301 202L00601 202P10401	C-Trimmer " "				
SEMICONDUCTORS			OTHERS			
Q103 3 1,151 2 102 101 D2,3 151,152 101 4,9,10 201 1 202 5~8 IC151 301 251 302 402 201	260P10403 260P17102 260P17103 260P17503 260P17603 260P23702 264P00401 264P01306 264P07501 264P08801 264P10505 264P11701 264P13901 264P14301 266M00101 266P31601 266P31801 266P32101 266P32102 266P71001	TR " " " " " Diode " " " " " Diode-LE " IC " " " " " "	2SC739-C 2SC710-C, D 2SC710-C 2SC711-D 2SC763-C 2SK61-O MD34 1N60P SC-15 V-06C EQB-01-08 1S953 Diode-LE SLP-119 SLP-114B TA7061A/BA402 M51521L M51011P M51513L M51513L HA1156	Z1 PL2 1 CF151,152 S6 7 TL, TR CR151 1	224D01901 241L31602 241L31701 241M12801 241M14901 253L00601 253L00602 283P00102 296M00301 431L01901 432L02001 433L00103 460L00501 479L00702 149L00101 149L00301	Air Gap FPC Fader FPC LED PWB VR PWB SW Lead Lamp Lead Lamp Fuse 2A Ceramic Filter SW-Slide SW-Push SW-Seesaw Head Clutch CR-Multiple "

Chrysler By Mitsubishi Plymouth Sapporo/ Dodge Challenger RS-66SUB-K

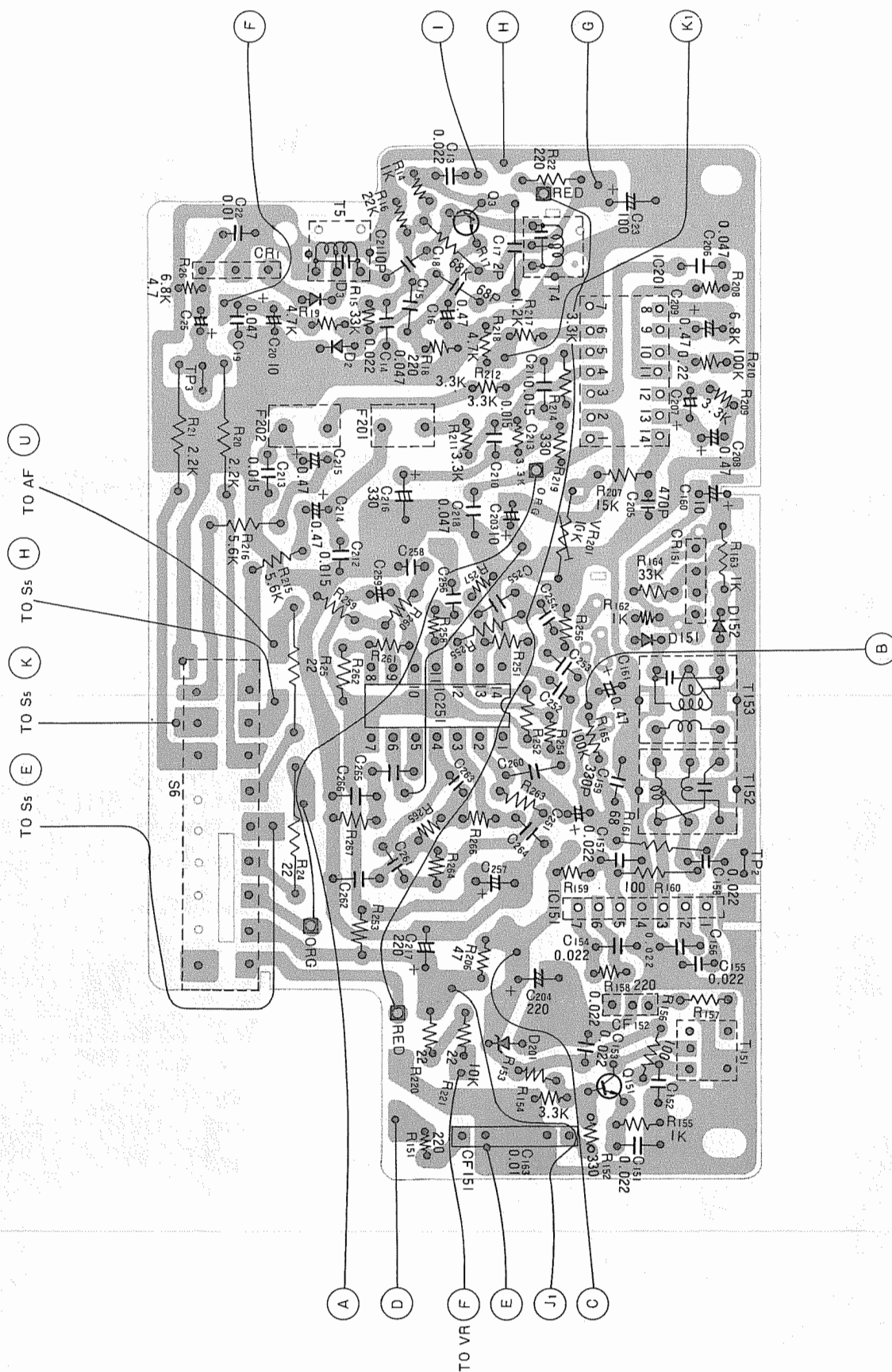
10. PRINTED CIRCUIT BOARD AND WIRING DIAGRAM (Printed Side)

PWB-RF



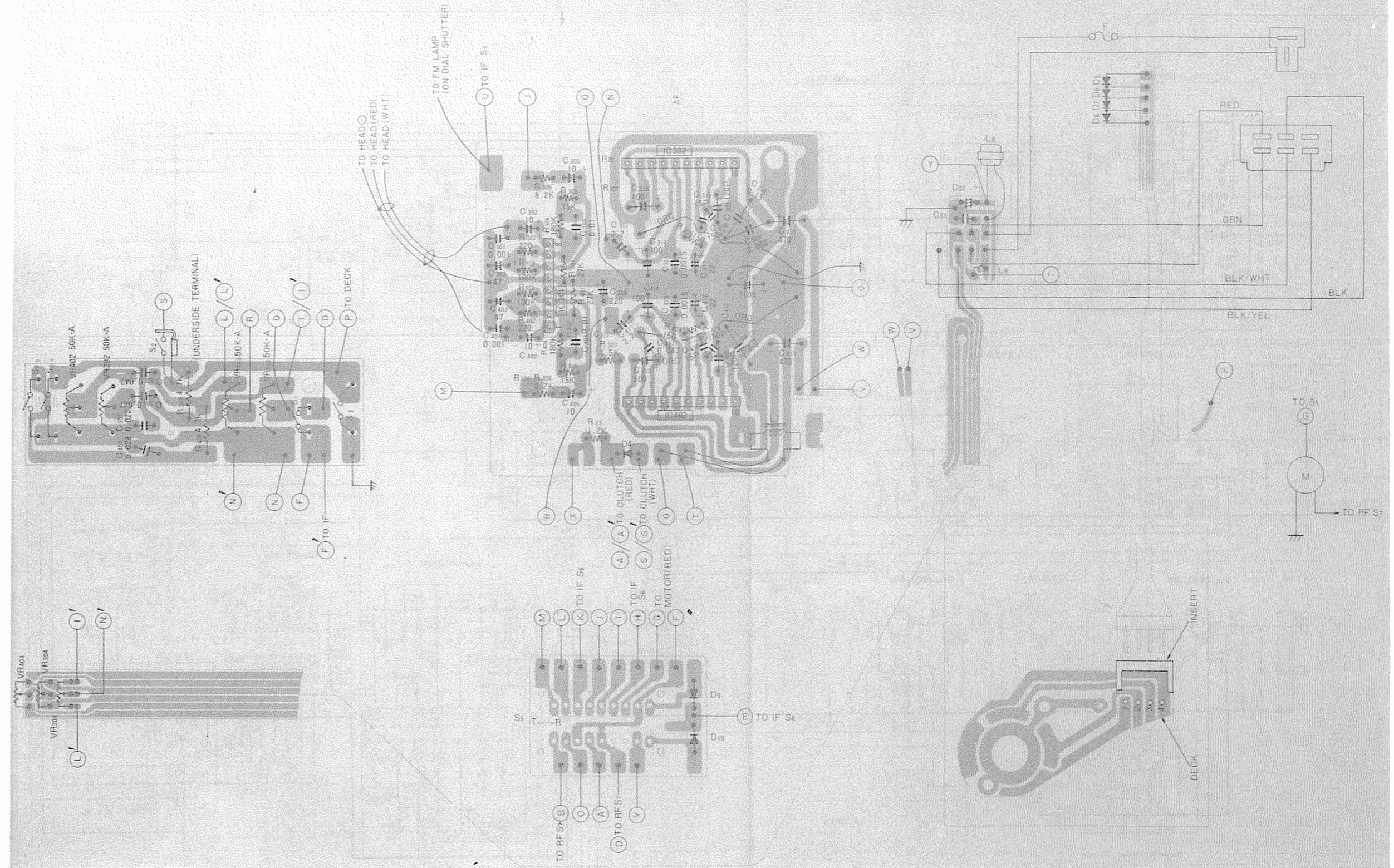
PRINTED CIRCUIT BOARD AND WIRING DIAGRAM (Printed Side)

PWB-IF



PRINTED CIRCUIT BOARD AND WIRING DIAGRAM (Printed Side)

MODEL RS-66SUB-K



Chrysler By Mitsubishi Plymouth Sapporo/
Dodge Challenger RS-66SUB-K

SCHEMATIC DIAGRAM

MODEL RS-66SUB-K

