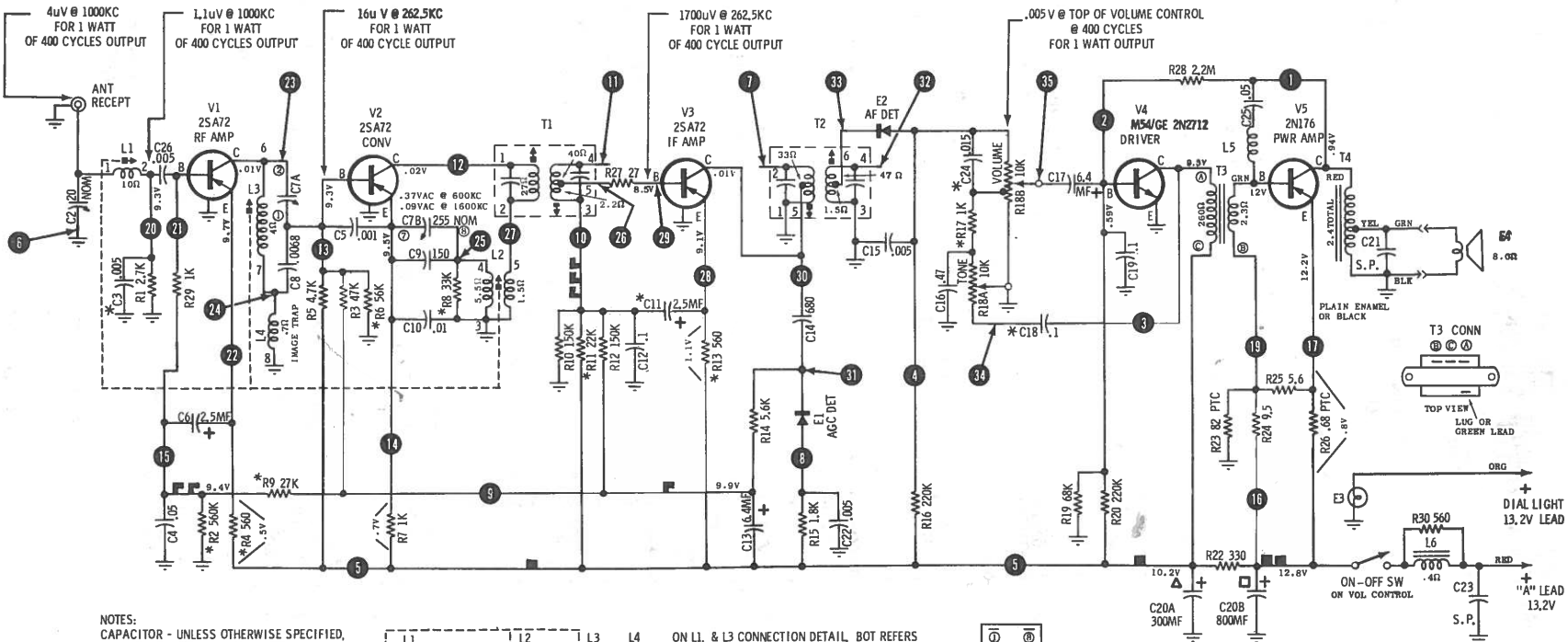


KLH Model Eighteen (FM Stereo Tuner)
Courtesy of KLH RESEARCH & DEVELOPMENT CORP.



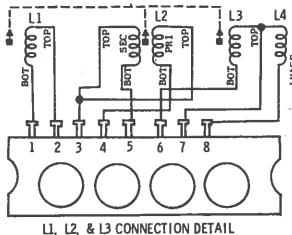
NOTES:

CAPACITOR - UNLESS OTHERWISE SPECIFIED, DECIMAL VALUES IN MF; ALL OTHERS IN MMF. VOLTAGES - MEASURED FROM POINT INDICATED TO GROUND WITH A VTVM + 10%. NO SIGNAL IN. INPUT VOLTAGE - 13.2 VDC. TUNING RANGE - 540KC TO 1610KC IF FREQ - 262.5KC

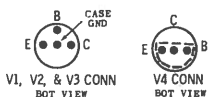
* THESE VALUES ARE NOMINAL AND MAY VARY IN PRODUCTION TO MEET SPECIFICATIONS. SEE REPLACEMENT PARTS LIST

PLATED CHASSIS BOARD WIRING LEGEND

■ - B+ ■ - AVC ■ - RF AVC ■ - IF AVC ■ - B++

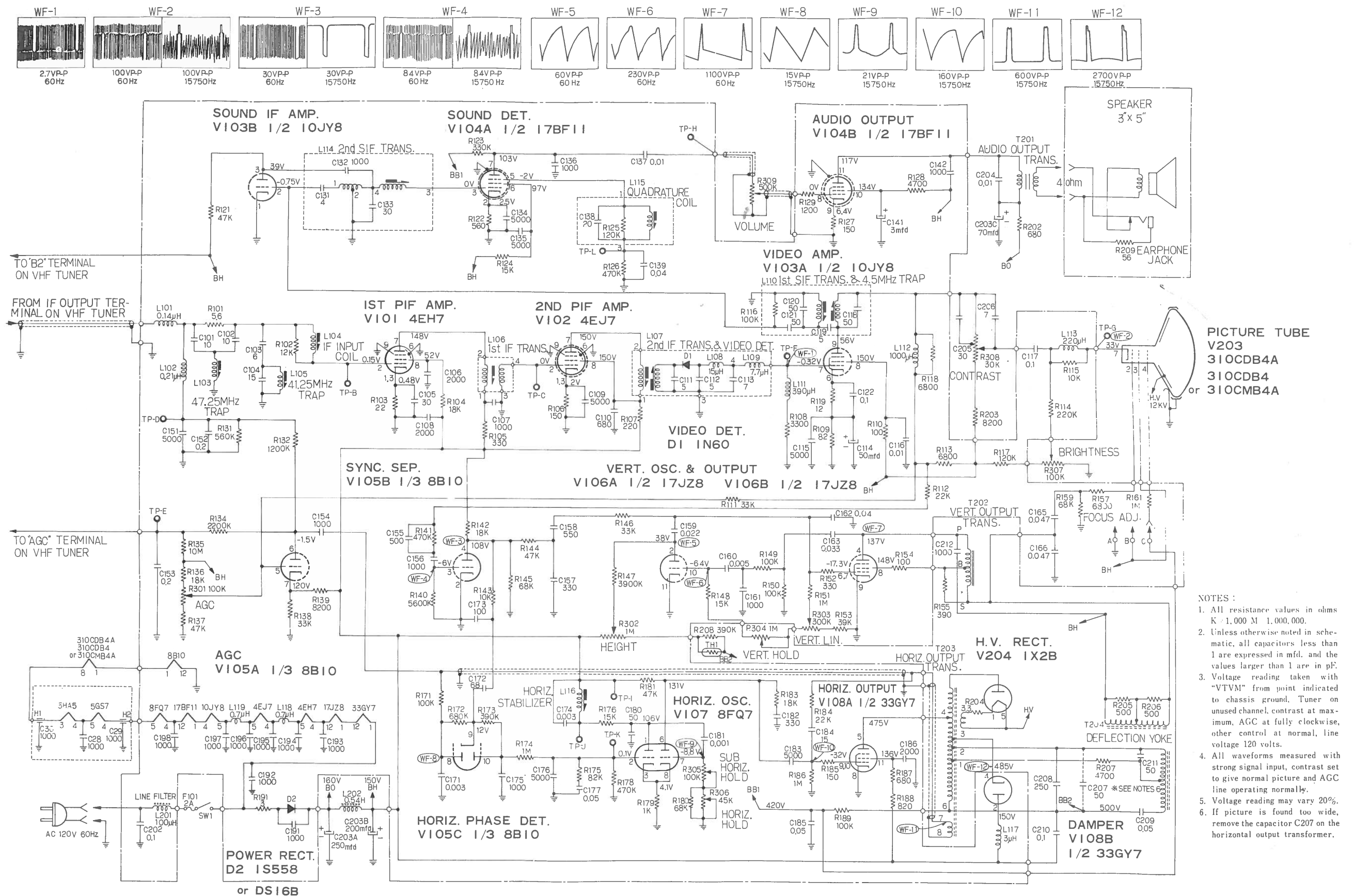


ON L1, & L3 CONNECTION DETAIL, BOT REFERS TO LEAD AT BOTTOM OF COIL, I.E., NEAREST THE TERMINAL STRIP. THE SECONDARY WINDING IS THE OUTERMOST WINDING.



DIAG 63D40051A71-A

CAUTION
"A" LEAD MUST BE CONNECTED TO POSITIVE (+) SIDE OF POWER SUPPLY. RADIO WILL NOT OPERATE AND DAMAGE TO COMPONENTS WILL RESULT IF CONNECTED OTHERWISE.



- NOTES:
1. All resistance values in ohms K = 1,000 M = 1,000,000.
 2. Unless otherwise noted in schematic, all capacitors less than 1 are expressed in mfd. and the values larger than 1 are in pF.
 3. Voltage reading taken with "VTVM" from point indicated to chassis ground. Tuner on unused channel, contrast at maximum, AGC at fully clockwise, other control at normal, line voltage 120 volts.
 4. All waveforms measured with strong signal input, contrast set to give normal picture and AGC line operating normally.
 5. Voltage reading may vary 20%.
 6. If picture is found too wide, remove the capacitor C207 on the horizontal output transformer.

