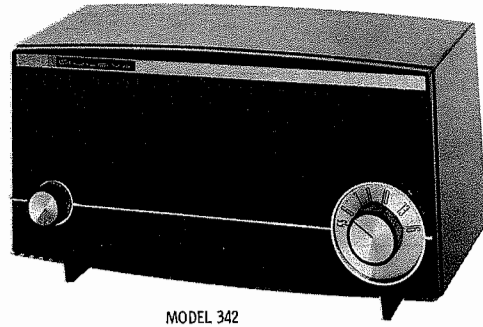
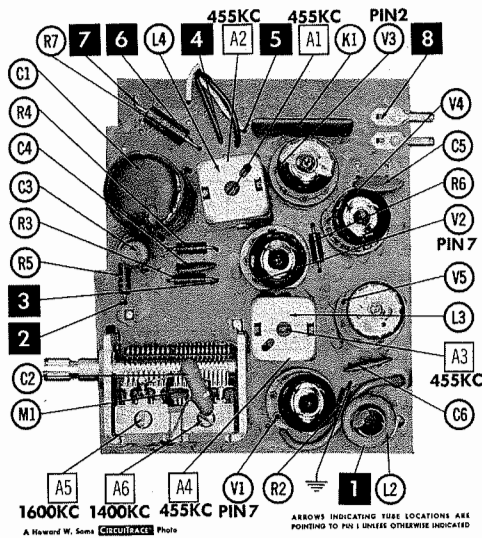


# PHOTOFACT® Folder

with CIRCUITRACE®

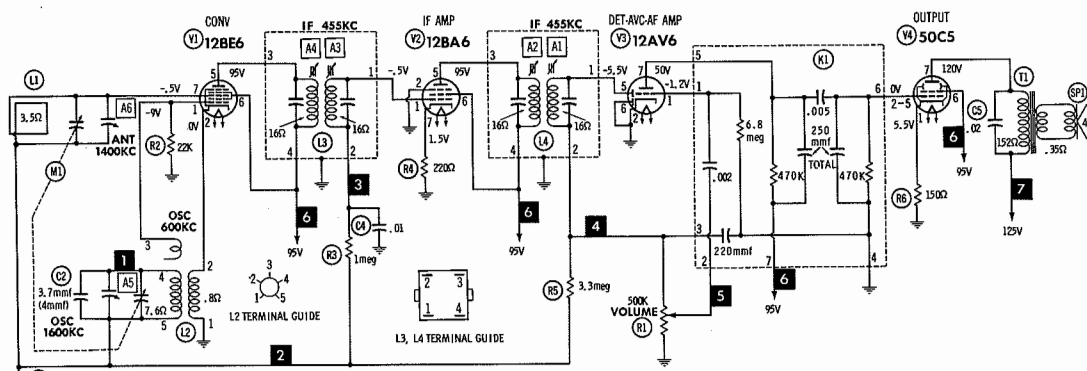
## BULOVA MODELS 340 Series



MODEL 342

CAUTION  
ONE SIDE OF AC LINE CONNECTED TO CHASSIS

TRADE NAME:	Bulova Models 340, 342, 343, 346
SUPPLIER:	For Current Address, See Master Index.
TYPE SET:	5 Tube AM Receiver
POWER SUPPLY:	105-120 Volts AC-DC
TUNING RANGE:	BROADCAST 540-1600KC
	RATING: 29 Watts, .3 Amp. @117 Volts AC



### RESISTANCE MEASUREMENTS

ITEM	TUBE	Pin 1	Pin 2	Pin 3	Pin 4	Pin 5	Pin 6	Pin 7
V1	12BE6	22K	.8Ω	34Ω	23Ω	1500Ω	1500Ω	3.8meg
V2	12BA6	4.8meg	0Ω	12Ω	23Ω	1500Ω	1500Ω	220Ω
V3	12AV6	6.8meg	0Ω	0Ω	12Ω	500K	0Ω	1470K
V4	50C5	150Ω	470K	34Ω	85Ω	470K	1500Ω	152Ω
V5	35W4	NC	NC	85Ω	120Ω	120Ω	115Ω	180K

THIS READING WILL VARY DEPENDING UPON THE CONDITION OF THE ELECTROLYTIC IN THE CIRCUIT.  
MEASURED FROM PIN 7 OF V5.

1. Voltage measurements taken with vacuum tube voltmeter.
2. All controls set for normal operation, no signal applied.
3. Measured values are from socket pin or terminal to common ground.
4. All terminals viewed from bottom unless otherwise designated.
5. Numbers assigned to terminals may not be found on the unit.
6. Supply voltage maintained at rated value for voltage readings.

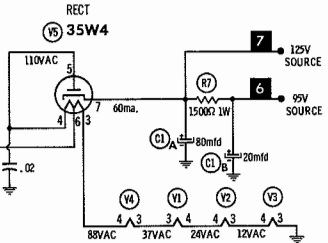
A PHOTOFACT STANDARD NOTATION SCHEMATIC with CIRCUITRACE

©Howard W. Sams & Co., Inc., 1964

### ALIGNMENT INSTRUCTIONS

ALIGN PROCEDURE: RADIATE SIGNAL, SET VOLUME CONTROL AT MAXIMUM, CONNECT OUTPUT METER ACROSS VOICE COIL AND ADJUST IN SEQUENCE FOR MAXIMUM AT FREQUENCY SHOWN.  
A1 THRU A4 @ 455KC, A5 @ 1600KC, A6 @ 1400KC, REPEAT.

SUGGESTED ALIGNMENT TOOLS: GENERAL CEMENT A1 thru A4, 5097 A5, A6 8888, 9087, 9089 2528, 2541, 2587 WALSCO 2515



BULOVA  
MODELS 340 Series

HOWARD W. SAMs & CO., INC. Indianapolis 6, Indiana

The listing of any available replacement part herein does not constitute in any case a recommendation, warranty or guaranty by Howard W. Sams & Co., Inc., as to the quality and suitability of such replacement part. The numbers of these parts have been compiled from information furnished to Howard W. Sams & Co., Inc., by the manufacturers of the particular type of replacement part listed. MG841

Reproduction or use, without express permission, of editorial or pictorial content, in any manner, is prohibited. No patent liability is assumed with respect to the use of the information contained herein. © 1964 Howard W. Sams & Co., Inc., Indianapolis 6, Indiana. Printed in U. S. of America

DATE 9-64 SET 716 FOLDER 6

BULOVA  
MODELS 340 Series

SET 716 FOLDER 6



# PARTS LIST AND DESCRIPTION

## TUBES

• AMPEREX •			• GENERAL ELECTRIC •			• RCA •			• SYLVANIA •		
ITEM No.	USE	TYPE	ITEM No.	USE	TYPE						
V1	Converter	12BE6	V4	Output	50C5						
V2	IF Amp.	12BA6	V5	Rectifier	35W4						
V3	Det.-AVC.-AF Amp.	12AV6									

## ELECTROLYTIC CAPACITORS

ITEM No.	RATING		REPLACEMENT DATA						
	CAP.	VOLT.	BULOVA PART No.	AEROVOX PART No.	CORNELL-DUBILIER PART No.	GENERAL ELECTRIC PART No.	GENERAL INSTRUMENT PART No.	MALLORY PART No.	SPRAGUE PART No.
C1A	80	150	10-43	PR2-040	ESS-7515	QT2-8.2	TDLD-10	PWD240	PW-2457
B	20	150							

## FIXED CAPACITORS

ITEM No.	RATING		REMARKS	REPLACEMENT DATA					
				AEROVOX PART No.	CENTRALAB PART No.	CORNELL-DUBILIER PART No.	ELMENCO PART No.	MALLORY PART No.	SPRAGUE PART No.
C2	3.7	400V	(4) †	P488N-02	TCZ-3R3	LA10V33-SL	CCT0-3R3	CNO533	10TS-V33
C3	.02			BPD-01	DD-203	DPMS4S2	4DP-2-203	GEM411	4TM-S20
C4	.01			BPD-02	DD-103	BYA10S1	CCD-103	B110	5HK-S10
C5	.02			BPD-02	DD-203	BYA6S2	CCD-203	B120	5HK-S20
C6	.02			BPD-02		BYA6S2	CCD-203	B120	5HK-S20

† Alternate Value.

## CONTROLS

All wattages 1/2 watt, or less, unless otherwise listed.

ITEM No.	USE	RESISTANCE	REPLACEMENT DATA				
			BULOVA PART No.	CENTRALAB PART No.	CLAROSTAT PART No.	CTS-IRC PART No.	MALLORY PART No.
R1	Volume, Switch	500K	22-32	F2-500K, SU204 KR-1 or (B -60S)	A47-500K-Z KSS-3, SWE-12	Q13-133, 76-1 or (BU1, CF25, SS6, GC)*	UA55A, SK750, US41 or (RU55A, SL38, SK750, US41) or (U48, US26)

\*"SNAPTROL"

## COILS (RF-IF)

ITEM No.	USE	REPLACEMENT DATA					NOTES
		BULOVA PART No.	MERIT PART No.	MILLER PART No.	STANCOR PART No.	WORKMAN PART No.	
L1	Loop Ant. ①	60-30					① Includes cabinet back.
L2	AM Osc						
L3	Input IF		BC-356	13-PC9	RTC-8683	T646	
L4	Output IF		BC-357	13-PC10	RTC-8684	T647	

## TRANSFORMER (AUDIO OUTPUT)

ITEM No.	IMPEDANCE		REPLACEMENT DATA					NOTES
	PRI.	SEC.	BULOVA PART No.	MERIT PART No.	STANCOR PART No.	THORDARSON PART No.	TRIAD PART No.	
T1	2950Ω	3-4Ω	1563-1	A-3025	A-3332	22S22 ①	S-16X ①	① Cut and tape tap.

## SPEAKER

ITEM No.	TYPE		REPLACEMENT DATA		NOTES
			BULOVA PART No.	QUAM PART No.	
SP1	4" PM	3-4Ω	26-36	4A05R	

## COMPONENT COMBINATIONS

ITEM No.	USE	DESCRIPTION	BULOVA PART NO.	REPLACEMENT DATA
K1	Audio Coupling	470K, 470K, 6.8meg, 220mmf, 250mmf, .002mfd, .005mfd.	16-4	Aerovox PA-511.2 CRL PC-157 Mallory MS108① Sprague DT-4 ①

① Reverse leads 5 and 6.

## MISCELLANEOUS

ITEM No.	PART NAME	BULOVA PART No.	NOTES
M1	Tuning Capacitor	12-27	2 Gang

## WIRING DATA

General-use Unshielded Hook-up Wire ..... Use BELDEN No. 8530 (Solid) Available in 12 Colors  
8524 (Stranded) Available in 12 Colors  
Power Cord ..... Use BELDEN No. 17106 (Plastic) or 17128 (Rubber) - 6 Ft.  
17109 (Plastic) or 17129 (Rubber) - 9 Ft.  
Power Cord (Interlock Type) ..... Use BELDEN No. 8874 (Rubber) or 8895 (Plastic)