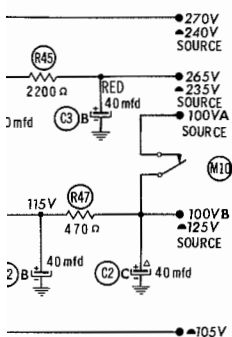


with vacuum tube voltmeter;
ohm per volt voltmeter;
bottom views.
pin to common ground.
its voltage readings.
values makes possible a
resistance readings.
signal applied for voltage



NUMBERS ASSIGNED TO COILS, SWITCHES, PLUGS, SOCKETS, AND TRANSFORMERS ARE TO FACILITATE CIRCUIT TRACING OR COMPONENT REPLACEMENT AND MAY NOT NECESSARILY BE FOUND ON THE UNIT.

VOCALINE MODELS ED-27-6,
ED-27-12, ED-27M-6, ED-27M-12

FOLDER 15
SET 531

PHOTOFACT® Folder

VOCALINE MODELS ED-27-6,
ED-27-12, ED-27M-6, ED-27M-12



MODEL ED-27M-12

TRADE NAME	Vocaline Models ED-27-6, ED-27-12, ED-27M-6, ED-27M-12 (Commaire)
MANUFACTURER	Vocaline Company of America, Inc., Old Saybrook, Connecticut
TYPE SET	AC-Battery Operated Crystal Controlled 10 Tube Citizens Band Transmitter-Receiver
POWER SUPPLY	110-120 Volts AC, 60 Cycles (or) 12 Volt Storage Battery (-12 Versions) 110-120 Volts AC, 60 Cycles (or) 6 Volt Storage Battery (-6 Versions)
RATING	48 Watts, .5 Amp. @117 Volts AC (Receive); 58 Watts, .58 Amp. @117 Volts AC (Transmit) 7.4 Amp@6.3 Volts DC (Receive); 8.2 Amp@6.3Volts DC (Transmit) 4.3 Amp@12.6 Volts DC (Receive-Transmit)
TUNING RANGE	Any 4 of Citizens Band Channels 1 thru 22.

NOTICE

ONLY THOSE PERSONS PROPERLY LICENSED BY FCC ARE PERMITTED TO MAKE CRYSTAL SUBSTITUTION OR EFFECT REPAIRS ON THE TRANSMITTER PORTION OF THIS UNIT.

HOWARD W. SAMS & CO., INC. Indianapolis 6, Indiana



The listing of any available replacement part herein does not constitute in any case a recommendation, warranty or guaranty by Howard W. Sams & Co., Inc., as to the quality and suitability of such replacement part. The numbers of these parts have been compiled from information furnished to Howard W. Sams & Co., Inc., by the manufacturers of KZ431

the particular type of replacement part listed. Reproduction or use, without express permission, of editorial or pictorial content, in any manner, is prohibited. No patent liability is assumed with respect to the use of the information contained herein. © 1961 Howard W. Sams & Co., Inc., Indianapolis 6, Indiana. Printed in U.S. of America

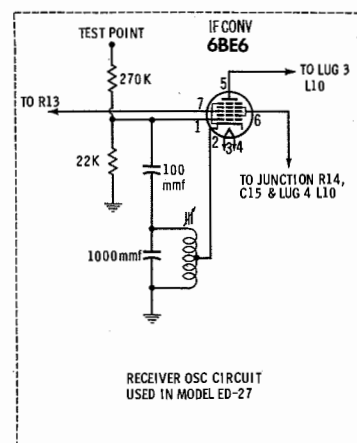
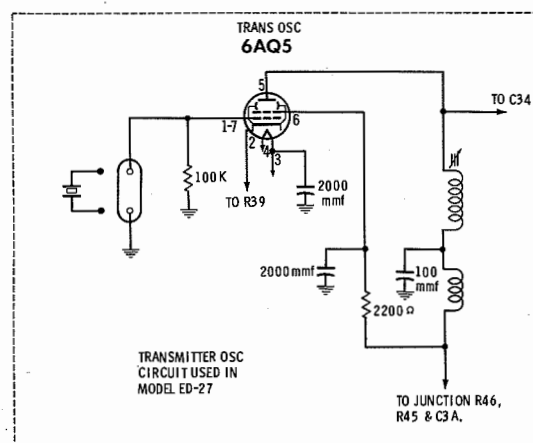
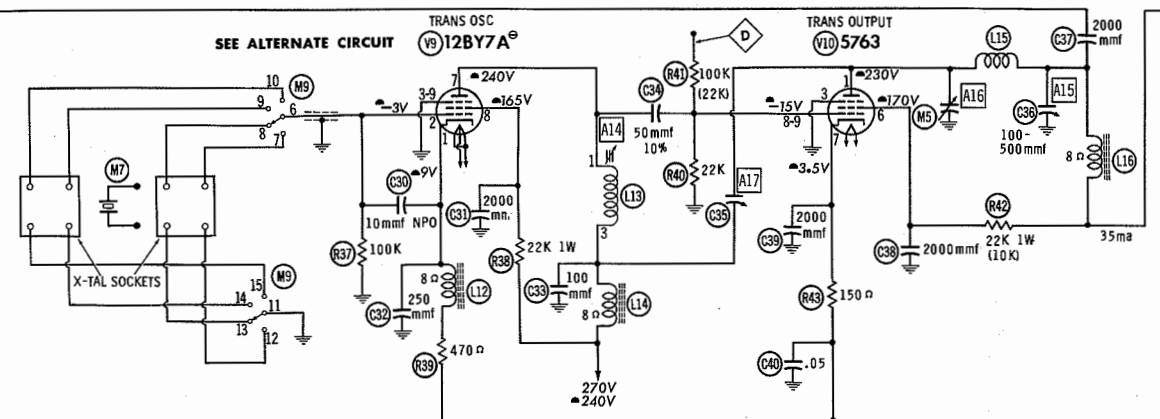
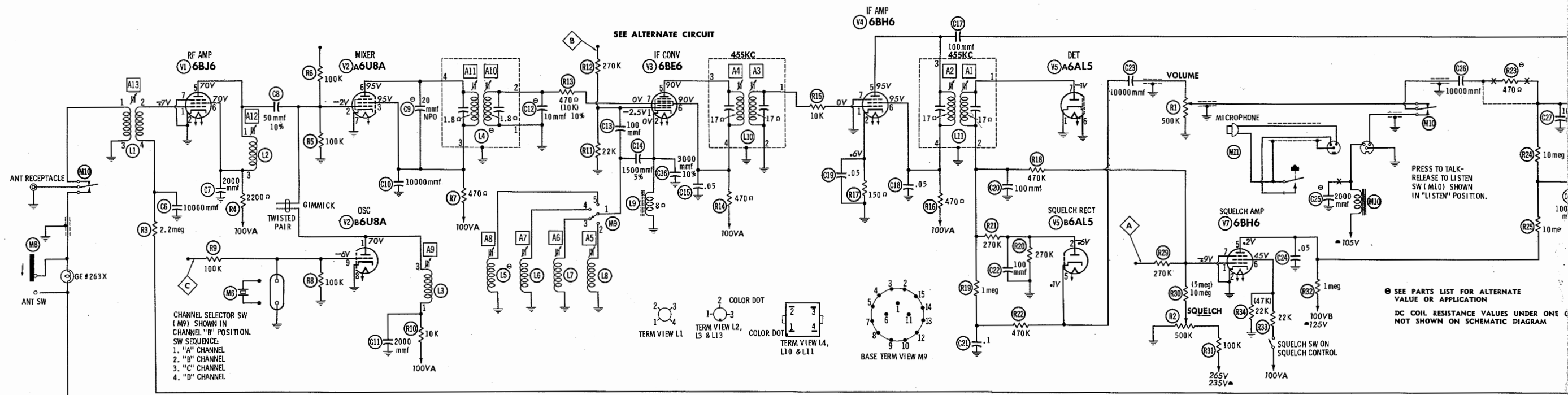
DATE 5 - 61

SET 531

FOLDER 15

VOCALINE MODELS ED-27-6,
ED-27-12, ED-27M-6, ED-27M-12

SET 531
FOLDER 15



ITEM	TUBE	Pin 1	Pin 2	Pin 3	Pin 4	Pin 5	Pin 6	Pin 7	Pin 8	Pin 9
V1	6BJ6	2.7meg	0	.1	.1	†3200	†3200	0		
V2	6U8A	†11K	100K	†1500	.1	.1	†1500	0	0	100K
V3	6BE6	22K	8	.1	.1	†1500	†1500	470		
V4	6BH6	10K	150	.1	.1	†1500	†1500	0		
V5	6AL5	0	270K	.1	.1	2meg	0	540K		
V6	6AV6	†21meg	10K	.1	.1	†11meg	470K	†200K		
V7	6BH5	1meg	0	.1	.1	†1meg	†15K	0		
V8	6AQ5A	500K	330	.1	.1	†345	†220	NC		
V9	12BY7A	470	100K	0	.1	.1	†230	†22K	0	
V10	5763	†345	NC	0	.1	.1	†22K	†150	22K	22K

RESISTANCE MEASUREMENTS FOR X1 AND X2 NOT GIVEN BECAUSE OF THE WIDE VARIATION IN INTERNAL TRANSISTOR RESISTANCE.

ALL MEASUREMENTS MADE IN "RECEIVE" POSITION, WITH SQUELCH ON, UNLESS OTHERWISE DESIGNATED.

† MEASURED IN "TRANSMIT" POSITION. ▲ MEASURED FROM CATHODE

■ MEASURED FROM OUTPUT OF M1. ■ MEASURED FROM NEGATIVE BATTERY CONNECTOR.

● MEASURED FROM JUNCTION OF C1 & C2A. NC NO CONNECTION

ALL RESISTANCE MEASUREMENTS MADE USING 117VAC POWER CORD.

ALL TRANSISTOR MEASUREMENTS MADE IN DC OPERATION.

