

SAFETY PRECAUTIONS

SERVICE WARNING

Only qualified service technicians who are familiar with safety checks and guidelines should perform service work. Before replacing parts, disconnect power source to protect electrostatically sensitive parts. Do not attempt to modify any circuit unless so recommended by the manufacturer. When servicing the receiver, use an isolation transformer between the line cord and power receptacle.

SERVICING THE HIGH VOLTAGE AND CRT

Use EXTREME CAUTION when servicing the high voltage circuits. To discharge static high voltage, connect a 10K ohms resistor in series with a test lead between the receiver and CRT anode lead. DO NOT lift the CRT by the neck. Always wear shatterproof goggles when handling the CRT to protect eyes in case of implosion.

X-RAY RADIATION AND HIGH VOLTAGE LIMITS

Be aware of the instructions and procedures covering X-ray radiation. In solid-state receivers and monitors, the CRT is the only potential source of X-rays. Keep an accurate high voltage meter available at all times. Check meter calibration periodically. Whenever servicing a receiver, check the high voltage at various brightness levels to be sure it is regulating properly. Keep high voltage at rated value, NO HIGHER. Excessive high voltage may cause X-ray radiation or failure of associated components. DO NOT depend on protection circuits to keep voltage at rated value. When troubleshooting a receiver with excessive high voltage, avoid close contact with the CRT. DO NOT operate the receiver longer than necessary. To locate the cause of excessive high voltage, use a variable AC transformer to regulate voltage. In present receivers, many electrical and mechanical components have safety related characteristics which are not detectable by visual inspection. Such components are identified by a # on both the schematic and the parts list. For SAFETY, use only equivalent replacement parts when replacing these components.

The listing of any available replacement part herein in no case constitutes a recommendation, warranty, or guarantee by Howard W. Sams & Company as to the quality and suitability of such replacement part. The numbers of the listed parts have been compiled from information furnished to Howard W. Sams & Company by the manufacturers of the specific type of replacement part listed.

Reproduction or use, without express permission, of editorial or pictorial content, in any manner, is prohibited. No patent liability is assumed with respect to the use of the information contained herein.

©1995 by Howard W. Sams & Company
2647 Waterfront Parkway East Drive, Suite 300
Indianapolis, IN 46214-2012

Printed in the United States of America 5 4 3 2 1

SAFETY CHECKS – FIRE AND SHOCK HAZARD

Cold Leakage Checks for Receivers with Isolated Ground

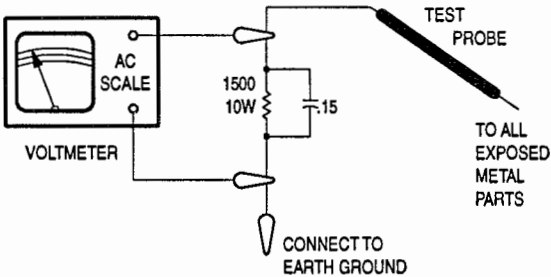
Unplug the AC cord, connect a jumper across the plug prongs, and turn the power switch on (if applicable). Use an ohmmeter to measure the resistance between the jumped AC plug and any exposed metal cabinet parts such as antenna screw heads, control shafts, or handle brackets. Exposed metal parts with a return path should measure between 1M ohms and 5.2M ohms. Parts without a return path must measure infinity.

Hot Leakage Current Check

Plug the AC cord directly into an AC outlet. DO NOT use an isolation transformer. Use a 1500 ohms, 10W resistor in parallel with a .15µF capacitor to connect between any exposed metal parts on the receiver and a good earth ground. (See figure below.) Use an AC voltmeter with at least 5000 ohms per volt sensitivity to measure the voltage across the resistor. Check all exposed metal parts and measure voltage at each point. Voltage measurements should not exceed .75VAC, 500µA. Any value exceeding this limit constitutes a potential shock hazard and must be corrected. If the AC plug is not polarized, reverse the AC plug and repeat exposed metal part voltage measurement at each point.

GENERAL GUIDELINES

Perform a final SAFETY CHECK before returning receiver to customer. Check repaired area for poorly soldered connections, and check entire circuit board for solder splashes. Check inner board wiring for pinched wires or wires contacting any high wattage resistors. Check that all control knobs, shields, covers, grounds, and mounting hardware have been replaced. Be sure to replace all insulators and restore proper lead dress.



95PF02737



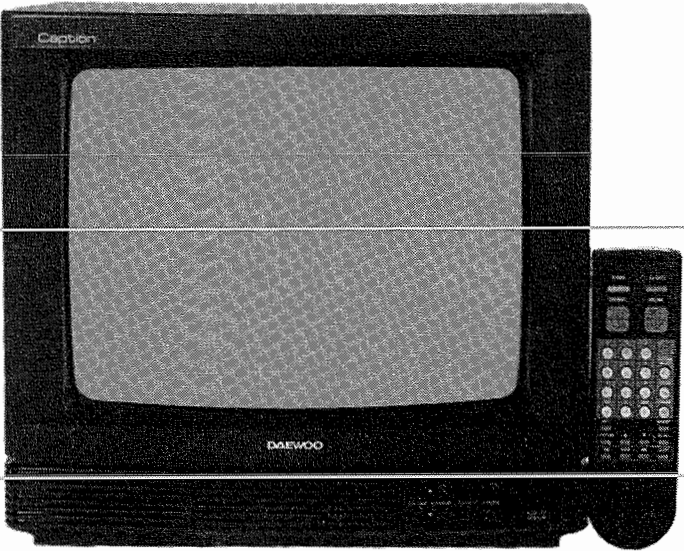
PHOTOFACT® Technical Service Data

SET 3475

MODEL DTQ-1446FC (CHASSIS CN-100C)

DAEWOO

DAEWOO
Model DTQ-1446FC (Chassis CN-100C)



Essential coverage
for servicing a television receiver...

- Schematics
- Component locations
- Parts list

Coverage includes these additional models and chassis:

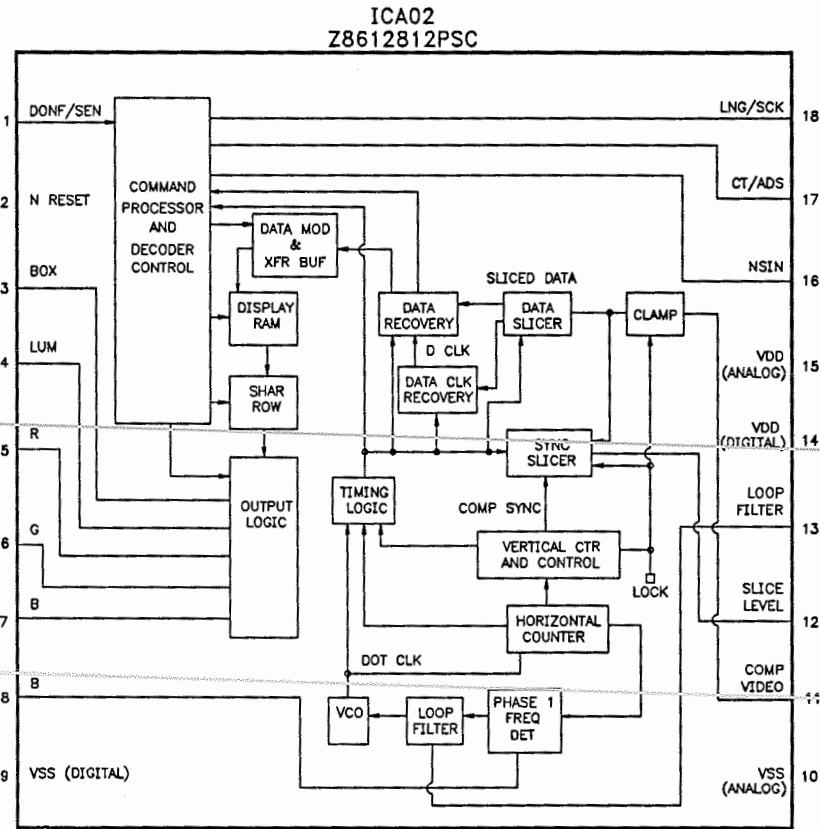
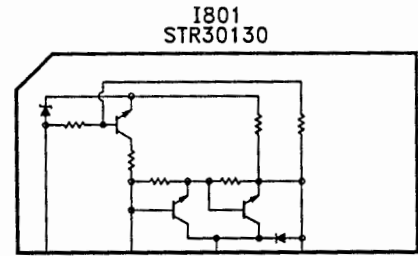
MODEL	CHASSIS
DTQ-1423FC	CN-100C
DTQ-2023FC	CN-100C
DTQ-2046FC	CN-100C



HOWARD W. SAMS & COMPANY

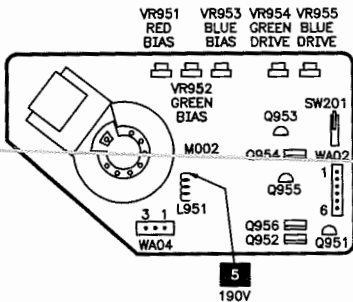
APRIL 1995 SET 3475

For Supplier Address,
See PHOTOFACT Annual Index

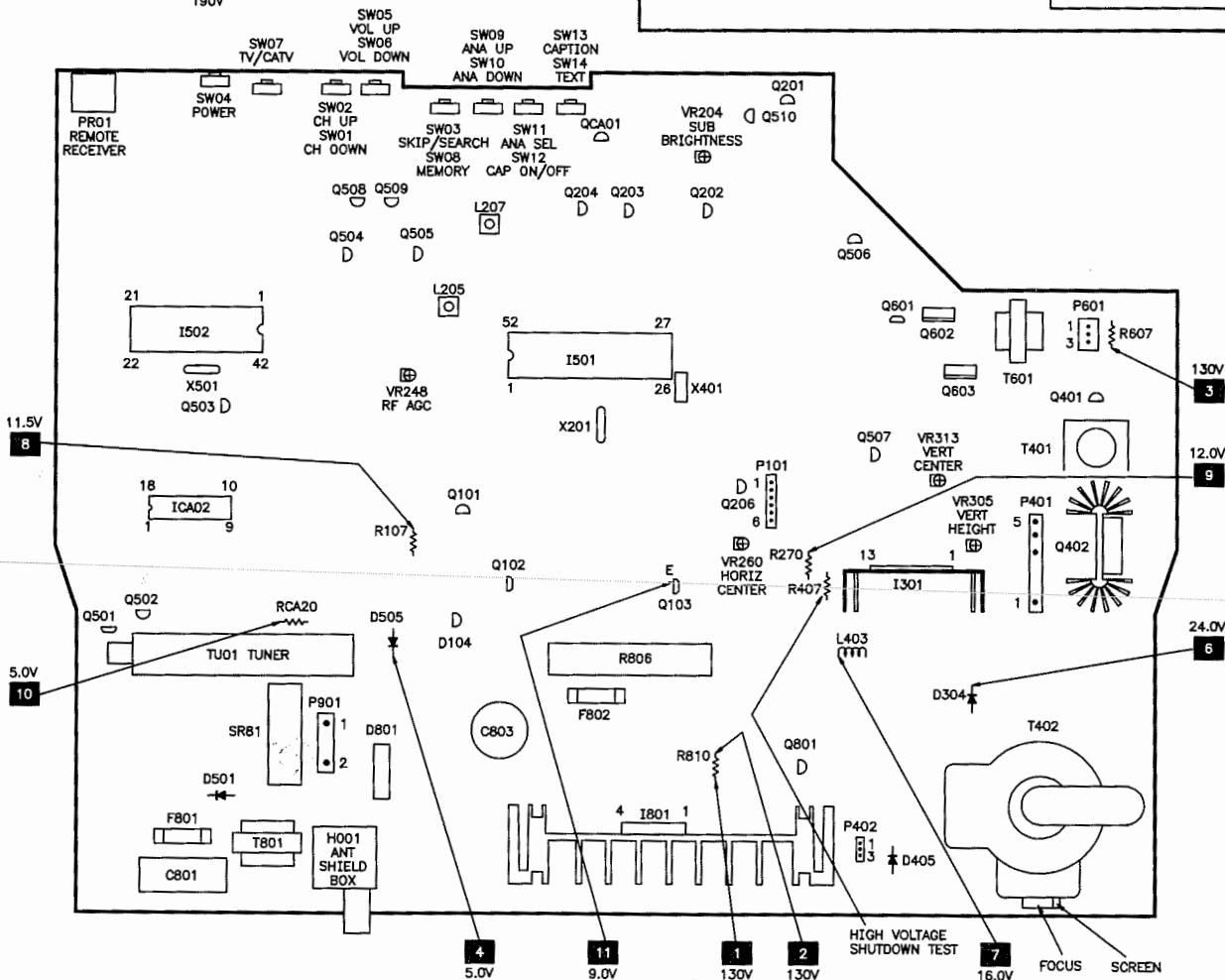


PLACEMENT CHART

CRT BOARD



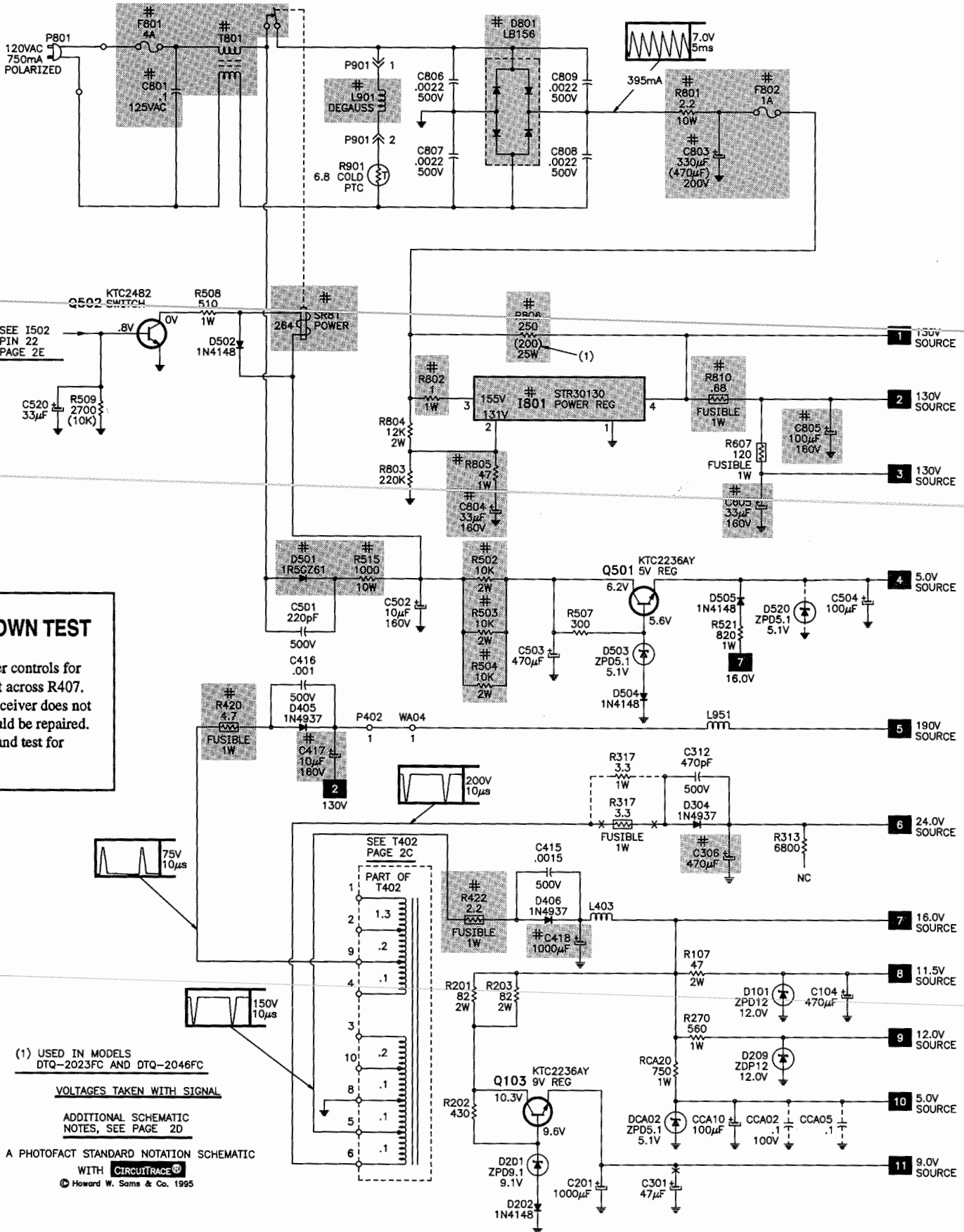
MAIN BOARD



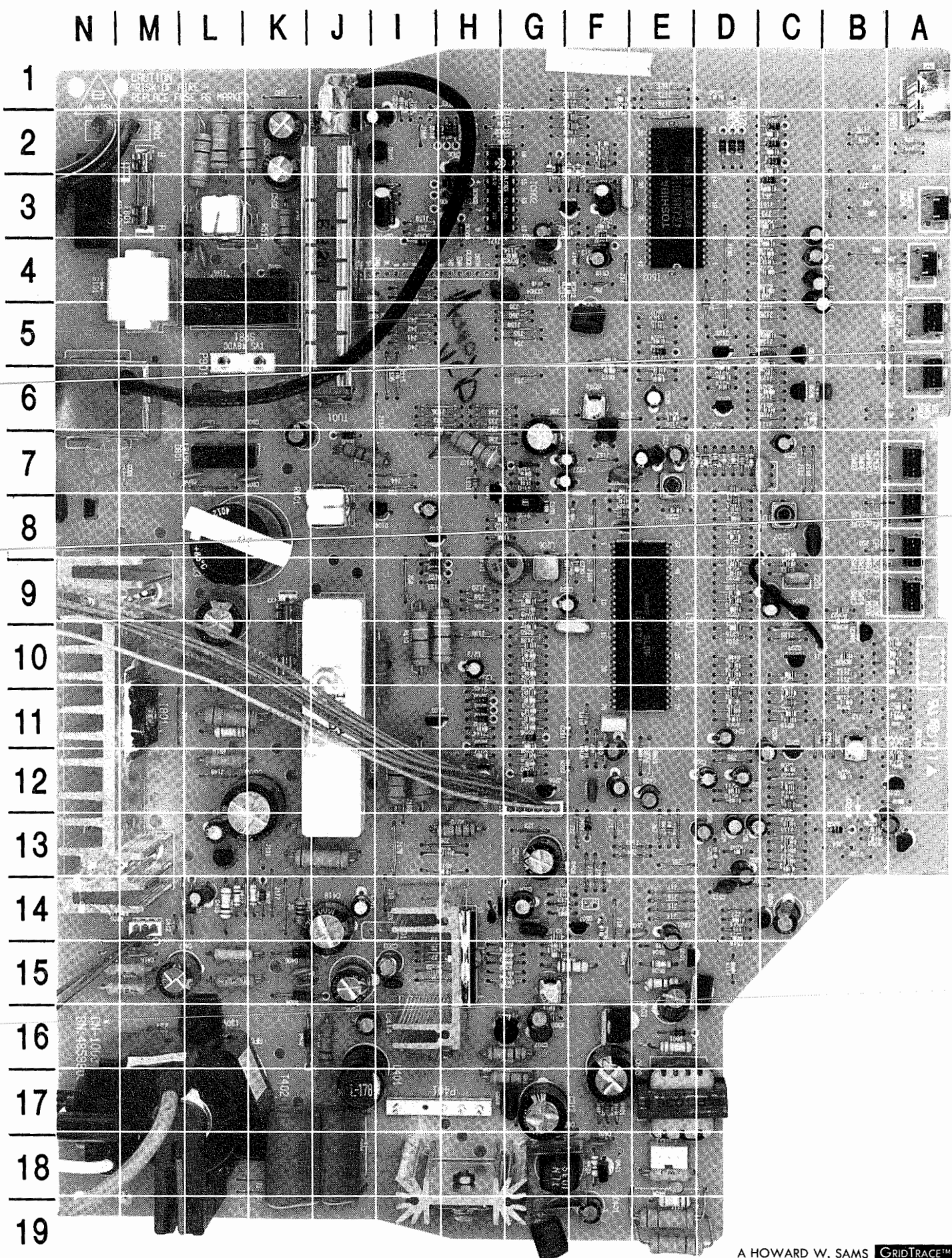
HIGH VOLTAGE SHUTDOWN TEST

Turn receiver on and adjust customer controls for normal operation. Temporarily short across R407. The receiver should lose raster. If receiver does not lose raster the shutdown circuit should be repaired. Turn receiver off, wait 30 seconds, and test for normal operation.

(1) USED IN MODELS DTQ-2023FC AND DTQ-2046FC
VOLTAGES TAKEN WITH SIGNAL
ADDITIONAL SCHEMATIC NOTES, SEE PAGE 2D
A PHOTOFACT STANDARD NOTATION SCHEMATIC WITH CIRCUITTRACE
© Howard W. Sams & Co. 1995



DAEWOO MODEL DTQ-1446FC (CHASSIS CN-100C)



MAIN BOARD

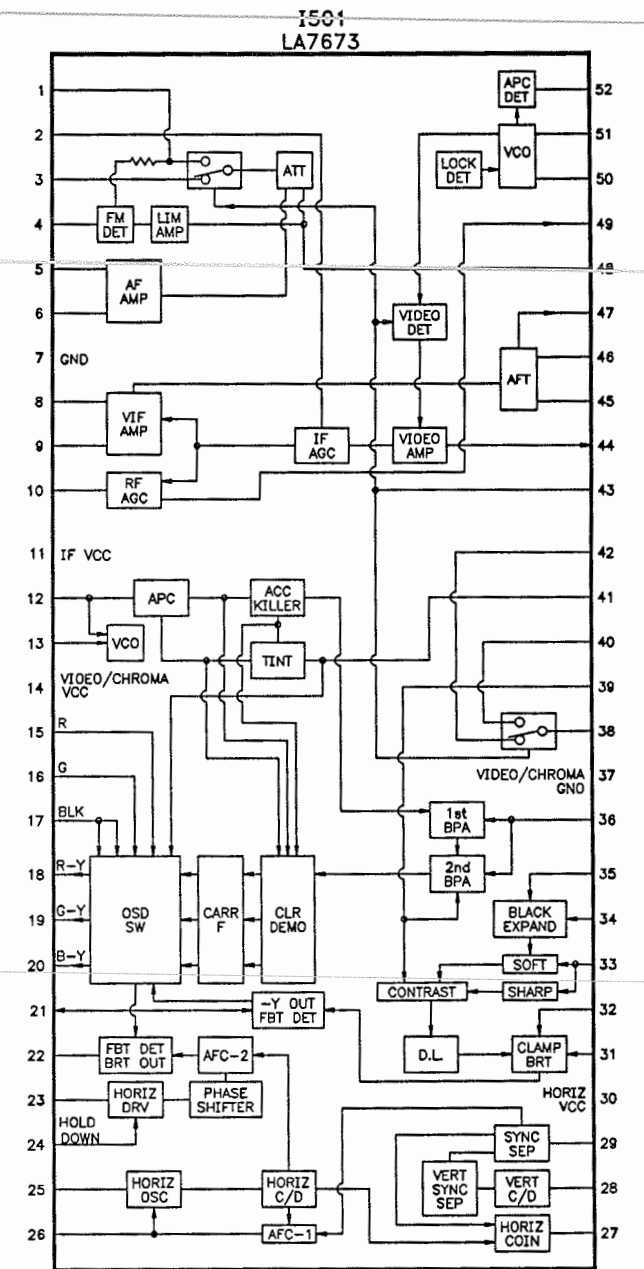
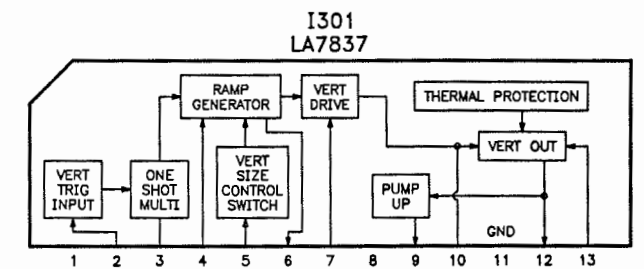
MAIN BOARD, GRIDTRACE LOCATION GUIDE

C101	H-8	C311	G-15	D202	H-11	L501	F-2	R217	D-10	R314	G-15	R614	E-5
C102	H-8	C312	K-15	D203	B-13	L502	F-3	R218	D-10	R315	G-14	R615	E-6
C103	G-8	C313	G-17	D204	G-12	L503	F-2	R219	C-11	R316	G-15	R801	J-8
C104	G-7	C401	F-19	D205	H-11	L504	F-2	R220	C-4	R317	L-15	R802	L-11
C105	I-8	C402	F-18	D206	H-11	L505	F-1	R221	A-11	R401	F-17	R803	L-11
C201	G-13	C403	F-18	D207	G-11	L601	D-8	R222	C-4	R403	F-18	R804	L-11
C202	D-13	C404	J-18	D209	H-12	L602	D-4	R223	F-12	R404	E-19	R805	L-10
C203	D-13	C405	F-12	D303	G-14	P101	G-12	R224	B-12	R405	E-19	R806	J-11
C204	D-13	C406	F-17	D304	K-15	P401	I-17	R226	C-2	R406	F-12	R810	L-12
C205	D-13	C408	D-13	D401	F-13	P402	M-14	R228	C-4	R407	H-13	R812	K-14
C206	D-12	C409	E-12	D402	K-16	P601	E-18	R229	C-4	R408	G-13	R813	L-14
C207	D-12	C410	G-19	D403	L-14	P901	K-5	R230	D-9	R409	N-14	R814	L-14
C208	C-12	C412	M-14	D405	M-15	PR01	A-1	R231	D-9	R410	F-12	R901	L-6
C209	C-12	C413	K-18	D406	K-15	Q101	H-7	R232	D-9	R412	E-13	RCA02	G-4
C210	D-11	C414	J-16	D501	L-4	Q102	I-8	R233	D-9	R413	J-13	RCA03	H-2
C211	D-7	C415	K-15	D502	K-4	Q103	I-11	R234	C-9	R414	J-13	RCA06	B-10
C212	C-10	C416	M-15	D503	J-2	Q201	A-13	R235	A-11	R416	E-19	RCA12	F-4
C213	C-11	C417	M-15	D504	J-2	Q202	C-12	R237	D-7	R418	I-16	RCA20	I-5
C214	C-11	C418	J-14	D505	J-7	Q203	C-10	R238	D-7	R419	J-16	RCA26	B-10
C215	C-14	C419	L-14	D506	D-2	Q204	C-9	R239	D-8	R420	M-15	RCA27	B-9
C216	D-10	C501	L-4	D507	G-2	Q206	G-12	R240	D-7	R421	M-15	SR01	G-9
C217	C-9	C502	K-2	D508	D-2	Q401	F-18	R241	D-7	R422	L-15	SR81	L-5
C218	F-11	C503	K-2	D509	D-2	Q402	H-18	R242	E-7	R501	C-6	SW01	A-5
C219	D-8	C504	K-7	D511	C-2	Q501	J-2	R243	F-8	R502	K-2	SW02	A-5
C220	D-8	C506	C-8	D513	F-4	Q502	I-2	R244	F-8	R503	L-2	SW03	A-7
C221	D-7	C507	B-6	D514	C-2	Q503	F-3	R245	E-6	R504	L-2	SW04	A-3
C222	E-7	C508	C-5	D515	C-2	Q504	D-5	R246	F-9	R505	C-5	SW05	A-6
C223	E-8	C509	C-6	D516	H-2	Q505	D-6	R247	F-6	R507	J-2	SW06	A-6
C224	E-7	C511	D-14	D517	H-2	Q506	C-14	R248	C-8	R508	K-3	SW07	A-4
C225	D-9	C512	D-14	D518	H-2	Q507	F-14	R249	G-9	R509	I-1	SW08	A-7
C226	F-8	C514	F-2	D519	C-3	Q508	C-5	R250	G-10	R510	D-6	SW09	A-8
C227	G-7	C515	F-2	D601	E-16	Q509	C-6	R251	G-10	R511	F-2	SW10	A-8
C228	F-7	C516	F-3	D602	E-5	Q510	A-12	R252	G-10	R512	H-13	SW11	A-8
C229	G-7	C517	F-3	D801	L-7	Q601	E-15	R253	G-11	R513	D-14	SW12	A-8
C230	F-9	C518	D-14	D802	K-14	Q602	D-15	R254	G-11	R515	L-3	SW13	A-9
C231	F-11	C519	F-4	DCA01	H-2	Q603	F-16	R255	G-11	R516	C-2	SW14	A-9
C232	F-7	C520	I-2	DCA02	I-3	Q801	L-13	R256	G-11	R517	C-6	T401	G-18
C233	F-9	C522	F-3	DCA04	I-4	QCA01	B-10	R257	H-12	R518	D-7	T402	L-17
C235	G-9	C601	E-14	DCA05	H-3	R102	H-8	R258	G-11	R519	D-6	T601	E-17
C236	A-13	C602	E-14	DCA06	H-3	R103	G-7	R259	G-12	R520	D-6	T801	M-4
C237	G-9	C603	E-15	DCA07	H-3	R104	G-8	R261	H-12	R521	J-7	TU01	J-3
C238	F-12	C604	F-15	DCA08	H-3	R105	G-8	R262	B-13	R530	I-10	VR204	B-12
C239	F-12	C605	F-17	DCA09	H-3	R106	G-7	R263	D-13	R531	G-10	VR248	F-6
C240	G-12	C607	E-5	F801	M-3	R107	H-7	R264	C-11	R532	G-10	VR260	H-12
C242	D-11	C609	E-6	F802	K-10	R108	I-8	R265	D-10	R533	G-11	VR305	G-16
C243	D-10	C801	N-3	H001	N-6	R109	I-10	R267	B-13	R536	G-10	VR313	G-15
C244	D-7	C803	L-8	I301	H-15	R110	I-10	R268	C-3	R537	C-6	X201	F-10
C245	C-4	C804	L-10	I501	F-8	R113	G-2	R269	D-11	R538	C-6	X401	F-11
C246	C-5	C805	K-13	I502	D-4	R114	D-15	R270	H-13	R539	C-5	X501	F-3
C247	C-3	C806	L-7	I801	M-11	R115	I-6	R271	C-13	R540	F-2	X601	F-7
C248	C-4	C807	L-7	ICA02	H-2	R201	I-12	R272	C-13	R541	C-2	Z201	C-9
C250	D-1	C808	L-7	L101	H-7	R202	H-11	R273	A-12	R542	F-3	Z601	C-7
C256	C-7	C809	L-7	L102	G-8	R203	I-12	R275	A-12	R543	C-3		
C271	C-12	C810	L-13	L201	D-11	R204	A-10	R276	C-4	R545	F-1		
C272	C-12	CCA01	G-3	L202	C-11	R205	A-10	R301	G-14	R546	F-1		
C273	H-10	CCA04	G-4	L203	C-9	R206	A-10	R302	G-15	R547	G-3		
C301	J-14	CCA06	H-3	L205	E-7	R207	A-12	R303	I-15	R602	E-12		
C302	I-15	CCA07	G-4	L206	G-9	R208	A-11	R304	G-15	R603	E-15		
C303	I-15	CCA10	I-3	L207	C-8	R209	B-11	R306	G-15	R604	E-15		
C304	G-14	CCA12	F-5	L231	D-12	R210	D-12	R307	G-15	R605	E-15		
C305	H-14	CCA14	G-4	L232	H-10	R211	D-12	R308	G-16	R606	E-16		
C306	J-15	D101	G-7	L243	F-8	R212	C-13	R309	G-16	R607	E-18		
C307	G-16	D102	I-9	L401	J-17	R213	C-13	R310	G-17	R610	E-5		
C308	F-14	D103	I-9	L402	H-19	R214	C-13	R311	G-16	R611	F-5		
C309	G-17	D104	I-8	L403	K-14	R215	A-10	R312	F-15	R612	E-6		
C310	G-14	D201	H-11	L404	F-17	R216	D-11	R313	G-14	R613	F-6		

DAEWOO

MODEL DTQ-1446FC (CHASSIS CN-100C)

IC FUNCTIONS




PARTS LIST

SEMICONDUCTORS					
(Select the replacement that gives the best results.)					
Item No.	Type No.	Mfr. Part No.	NTE Part No.	ECG Part No.	TCE Part No.
D101	ZPD12	DZPD12	NTE5021A	ECG5021A	SK12A
D102	ZPD5.1	DZPD5R1	NTE5010A	ECG5010A	SK5A1
D103	1N4148	D1N4148	NTE519	ECG519	SK3100
D104	UPC574J	1UPC574J	NTE615P	ECG615A	SK9976
D201	ZPD9.1	DZPD9R1	NTE5018A	ECG5018A	SK9A1
D202 Thru					
D207	1N4148	D1N4148	NTE519	ECG519	SK3100
D209	ZPD12	DZPD12	-	-	-
D303, 04	1N4937	D1N4937	NTE552	ECG552	SK9000
# D401	ZPD22	DZPD22	-	ECG5030A	SK22A
D402	1N4937	D1N4937	NTE552	ECG552	SK9000
# D403	1N4937	D1N4937	NTE552	ECG552	SK9000
D405, 06	1N4937	D1N4937	NTE552	ECG552	SK9000
# D501	1R5GZ61	D1R5GZ61FA	NTE125	ECG125	SK3081
D502	1N4148	D1N4148	NTE519	ECG519	SK3100
D503	ZPD5.1	DZPD5R1	NTE5010A	ECG5010A	SK5A1
D504, 05, 06	1N4148	D1N4148	NTE519	ECG519	SK3100
D507	ZPD3.9	DZPD3R9	NTE5007A	ECG5007A	SK3A9
D508, 09	1N4148	D1N4148	NTE519	ECG519	SK3100
D511	1N4148	D1N4148	NTE519	ECG519	SK3100
D513	ZPD5.1	DZPD5R1	NTE5010A	ECG5010A	SK5A1
D514 Thru					
D519	1N4148	D1N4148	NTE519	ECG519	SK3100
D520 (1)	ZPD5.1	DZPD5R1	NTE5010A	ECG5010A	SK5A1
D601, 02	1N4148	D1N4148	NTE519	ECG519	SK3100
# D801	LB156	DLB156	-	ECG5305	-
D802	1N4148	D1N4148	NTE519	ECG519	SK3100
D951	1N4148	D1N4148	NTE519	ECG519	SK3100
DCA01	1N4148	D1N4148	NTE519	ECG519	SK3100
DCA02	ZPD5.1	DZPD5R1	NTE5010A	ECG5010A	SK5A1
DCA04 Thru					
DCA09	1N4148	D1N4148	NTE519	ECG519	SK3100
# I301	LA7837	1LA7837	NTE7104	ECG7104	-
# I501	LA7673	1LA7673	-	-	-
# I502	TMP47C434N-3119	1TMP4N3119	-	-	-
	TMP47C434N3119	-	-	-	-
# I801	STR30130	1STR30130	NTE1777	ECG1777	SK9870
ICA02	Z86128	1Z86128	-	-	-
	Z861281PSC	-	-	-	-
Q101	KTC3197	TKTC3197	NTE107	ECG107	SK3293
Q102, 03	KTC2236AY	TKTC2236AY	NTE382	ECG293	SK3849
	KTC3205Y	-	-	-	-
Q201 Thru					
Q204	KSC945CY	TKSC945CY	NTE123AP	ECG123AP	SK3854
	KSC3198Y	-	-	-	-
Q206	KTA1270Y	TKTA1270Y	NTE290A	ECG290A	SK3114A
Q401	KTC2482	TKTC2482	NTE399	ECG399	SK3244
	KTC3207K	-	-	ECG399	-
# Q402	2SD1554	T2SD1554	NTE2302	ECG2302	SK9422
# Q402 (2)	2SD1555	T2SD1555	NTE2331	ECG2331	SK9422
Q501	KTC2236AY	TKTC2236AY	NTE382	ECG293	SK3849
	KTC3205Y	-	-	-	-
Q502	KTC2482	TKTC2482	NTE399	ECG399	SK3244
	KTC3230Y	-	-	-	-
# For SAFETY use only equivalent replacement part.					
(1) Used in some versions.					
(2) Used in models DTQ-2023FC and DTQ-2046FC.					

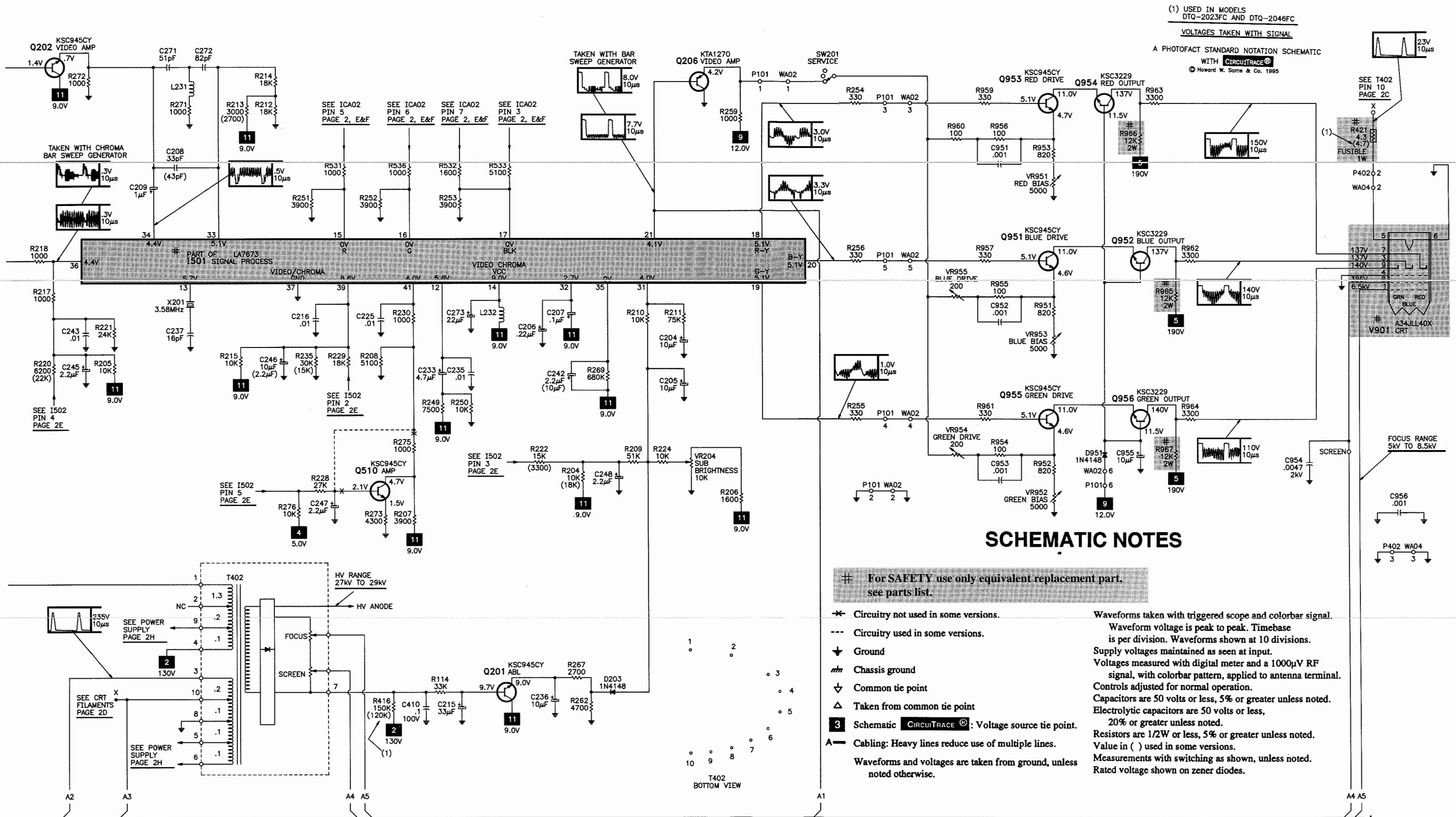
SEMICONDUCTORS continued					
(Select the replacement that gives the best results.)					
Item No.	Type No.	Mfr. Part No.	NTE Part No.	ECG Part No.	TCE Part No.
Q503	KTA1266Y	TKTA1266Y	-	-	-
	KSA733CY	TKSA733CY	NTE159*	ECG159*	SK3466*
Q504	KSC945CY	TKSC945CY	NTE123AP	ECG123AP	SK3854
	KSC3198Y	-	-	-	-
Q505	KTA1266Y	TKTA1266Y	-	-	-
	KSA733CY	TKSA733CY	NTE159*	ECG159*	SK3466*
Q506, 07, 08	KSC945CY	TKSC945CY	NTE123AP	ECG123AP	SK3854
	KSC3198Y	-	-	-	-
Q509	KSA733CY	TKSA733CY	NTE159*	ECG159*	SK3466*
Q510	KSC945CY	TKSC945CY	NTE123AP	ECG123AP	SK3854
	KSC3198Y	-	-	-	-
Q601	KTC2230AY	TKTC2230AY	NTE399	ECG399	SK9352
	KTC1026Y	-	-	-	-
Q602	KTA940	TKTA940	NTE398	ECG398	SK3930
Q603	KTC2073	TKTC2073	NTE375	ECG375	SK9118
Q801	KSA1013ACY	TKSA1013Y	-	-	-
Q951	KSC945CY	TKSC945CY	NTE123AP	ECG123AP	SK3854
	KSC3198Y	-	-	-	-
Q952	KSC3229	TKSC3229	-	-	-
Q953	KSC945CY	TKSC945CY	NTE123AP	ECG123AP	SK3854
	KSC3198Y	-	-	-	-
Q954	KSC3229	TKSC3229	-	-	-
Q955	KSC945CY	TKSC945CY	NTE123AP	ECG123AP	SK3854
	KSC3198Y	-	-	-	-
Q956	KSC3229	TKSC3229	-	-	-
QCA01	KSC945CY	TKSC945CY	NTE123AP	ECG123AP	SK3854
	KSC3198Y	-	-	-	-
* Lead configuration may vary from original.					
Important Parts Information					
▪ The parts listed here are those not usually available from a well-stocked supply cabinet or bin.					
▪ Where items may be replaced with equivalent parts, several alternates are shown from participating vendors.					
▪ On the parts lists, safety items are marked with a # to remind you that only exact replacements are recommended for these items.					
▪ When ordering parts, state the model number, part number, and description.					
Obtaining Parts					
Many of these parts are available from your local Sams authorized distributor or the manufacturer of the equipment. Call Sams for the name of your nearest distributor:					
800-428-7267					
Or consult the Sams Annual Index for the address of the original equipment manufacturer.					
Participating Vendors					
Information on test equipment and replacement parts is listed in these pages for the following participating vendors. Consult the Sams Annual Index for their current address.					
▪ Custom Components Corporation (Chek-A-Color)			▪ PTS Electronics Corporation (PTS)		
▪ NTE Electronics, Inc. (NTE)			▪ Sencore, Inc.		
▪ Phillips ECG Company (ECG)			▪ Thomson Consumer Electronics, Inc. (SK, TCE)		

CONTROLS & RESISTORS			
Item No.	Function/Rating	Mfr. Part No.	NTE Part No.
R317	3.3 5% 1W Fusible	-	F1W3D3
	3.3 5% 1W	RD-AZ339J	1W3D3
# R406	15K 5% 1/6W	RD-AZ153J	-
# R407	6200 5% 1/6W	RD-AZ622J	-
	4300 5% 1/6W	-	-
# R407 (1)	6800 5% 1/6W	RD-AZ682J	-
# R408	43K 5% 1/6W	RD-AZ433J	-
# R409	27 5% 1/6W	RD-AZ270J	-
# R420	4.7 5% 1W Fusible	RF01Z404J	F1W4D7
# R421	4.3 1W Fusible	RF01Z439J	F1W4D3
# R421 (1)	4.7 5% 1W Fusible	RF01Z479J	F1W4D7
# R422	2.2 5% 1W Fusible	RF01Z229J	F1W2D2
# R502, 03, 04	10K 5% 2W	RS02Z103J	2W310
# R515	1000 5% 10W Wirewound	RX10T102J	10W210
R607	120 5% 1W Fusible	RF01Z121J	F1W112
# R801	2.2 5% 10W Wirewound	RX10T229J	10W2D2
# R802	1 5% 1W	RS01Z109J	1W1D0
# R805	47 5% 1W	RS01Z470J	1W047
# R806	250 5% 25W Wirewound	RX25B251K	-
# R806 (1)	200 5% 25W Wirewound	RX25B201K	-
# R810	.68 5% 1W Fusible	RF01Z688J	-
R901	6.8 Cold PTC	DBF120M140	-
# R965, 66, 67	12K 5% 2W	RS02Z153J	2W312
VR204	10K Sub Brightness	RV5426103P	-
VR248	10K RF AGC	RV5426103P	-
VR260	100K Horizontal Centering	RV54261049	-
VR305	20K Vertical Height	-	-
	22K Vertical Height	RV6417223	-
	50K Vertical Height	-	-
VR313	5000 Vertical Centering	-	-
	4700 Vertical Centering	RV54264729	-
VR951	5000 Red Bias	RV6117502A	-
VR952	5000 Green Bias	RV6117502A	-
VR953	5000 Blue Bias	RV6117502A	-
VR954	200 Green Drive	RV6114720A	-
VR955	200 Blue Drive	RV6114720A	-
# For SAFETY use only equivalent replacement part.			
(1) Used in models DTQ-2023FC and DTQ-2046FC.			



Created with pride by the employees of Howard W. Sams & Company.

J. Barker, N. Beck, B. Bryant,
B. Buchanan, T. Clensy,
D. Cobb, G. Farrell, B. Fink,
M. Herkless, J. Kocha,
F. Malek, B. Medaris,
R. Raus, B. Skinner, J. Young



PARTS LIST continued

TUNER INFORMATION

CAPACITORS & ELECTROLYTICS

Item No.	Rating	Mfr. Part No.
C305	10pF ±.5pF 50V NPO	CXCH1H100D
# C306	470µF 20% 35V	CEXF1V471V
# C404	.006 5% 1.6kV	CMXH3C602J
# C404 (1)	.0062 5% 1.6kV	CMXH3C622J
# C405	4.7µF 20% 50V	CEXE1H479A
# C412	.0015 10% 500V	CCXB2H152K
# C413	.47 10% 200V	CMXB2D474K
# C413 (1)	.51 10% 200V	CMXB2D514J
# C417	10µF 20% 160V	CEXE2C100A
# C418	1000µF 20% 25V	CEXF2E102V
# C419	4.7µF 20% 25V	CEXE1E479A
# C605	33µF 20% 160V	CEXF2C330V
# C801	.1 10% 125VAC	CLYL2B104K
# C803	330µF 20% 200V	CEXA2D331G
	470µF 20% 200V	-
# C804	33µF 20% 160V	CEXF2C330C
# C805	100µF 20% 160V	CEXF2C101V
C954	.0047 10% 2kV	CCXB3D472K

For SAFETY use only equivalent replacement part.
(1) Used in models DTQ-2023FC and DTQ-2046FC.

COILS & TRANSFORMERS continued

Item No.	Function/Rating	Mfr. Part No.	On-Unit No.
L951	180µH	5CPX181J	-
T401	Horizontal Driver	5T0K000017	TLN-1039
T402 (2)	Horizontal Output	50H0000132	FSA25002SA
T402 (1)(2)	Horizontal Output	50H0000131	FSA24007M
T601	Audio Output	5T0U00005	TSP-1036
# T801	Line Filter	5PCF302801	LF-302801

For SAFETY use only equivalent replacement part.
(1) Used in models DTQ-2023FC and DTQ-2046FC.
(2) Focus and screen controls are part of T402.

CABINET PARTS

Item	Part No.
Model DTQ-1423FC	
Button Assembly - TV/CATV, Volume Up/Down, Channel Up/Down, Power	4854918401
Cabinet Back	4852131000
Cabinet Front	4852042700
Holder - Power Cord/ Antenna Input	4853622602
Power Cord Stopper	4853524600

Model DTQ-1446FC

Button Assembly - Caption, Text, Ana Sel, Cap On/ Off, Ana Up/Down, Skip/Search, Memory	4854916604
Button Assembly - Volume Up/Down, Channel Up/Down, TV/CATV, Power	4854916502
Cabinet Back	4852123903
Cabinet Front	4852037501
Door	4852808501
Door Lock	4857923300
Holder - Power Cord/ Antenna Input	4853622600
Power Cord Stopper	4853514400

Model DTQ-2023FC

Button Assembly - TV/CATV, Volume Up/Down, Channel Up/Down, Power	4854918401
Cabinet Back	4852130900
Cabinet Front	4852042600
Holder - Power Cord/ Antenna Input	4853622600
Power Cord Stopper	4853524600

Model DTQ-2046FC

Button Assembly - Caption, Text, Ana Sel, Cap On/ Off, Ana Up/Down, Skip/Search, Memory	4854916604
Button Assembly - Volume Up/Down, Channel Up/Down, TV/CATV, Power	4854916502
Cabinet Back	4852123903
Cabinet Front	4852037501
Door	4852808501
Door Lock	4857923300
Holder - Power Cord/ Antenna Input	4853622600
Power Cord Stopper	4853514400

TUNER VOLTAGE CHART

Pin	VHF Low Band	VHF High Band	UHF Band
NC (TUNING)	1.0V	4.2V	4.8V
AGC	7.3V	7.4V	7.4V
B+ (12V)	11.5V	11.5V	11.5V
IF	0V	0V	0V
BT (33V)	31.7V	31.7V	31.7V
BP (5V)	5.0V	5.0V	5.0V
L (LOCK)	0V	0V	0V
D (DATA)	4.7V	4.7V	4.7V
C (CLOCK)	0V	0V	0V
E (ENABLE)	0V	0V	0V

NOTE: VHF Low Band voltages taken on channel 2.
VHF High Band voltages taken on channel 7.
UHF Band voltages taken on channel 14.

MISCELLANEOUS

Item No.	Description	Mfr. Part No.	Notes
# F801	Fuse	5F1GB4021M	4Amp, 125V, Fast Acting
# F802	Fuse	5F1GB1022M	1Amp, 250V, Fast Acting
# H001	Shield Box	4850A13440	Antenna
M0002	Socket	4859301530	CRT
P801	Line Cord	4859900321	AC, Polarized
PR01	Preamp	-	Remote (DHR38V)
	Preamp	1DHR38V	Remote (DHR38V)
SF01	Filter	5PDSW1003S	SAW
# SP01	Speaker	4858305220	2" X 3 1/2", 8 Ohms, 3W
# SR81	Relay	5SC0101004	Power
SW201	Switch	5S40403035	Service
TU01 (1)	Tuner	4859708330	UHF/VHF
# V901	CRT	48A96414N1	A34JLL40X
# V901 (2)	CRT	48A96320N4	A48KZL90X
X201	Crystal	5XE3R5795C	Quartz, 3.58MHz
X401	Crystal	4350L02410	Ceramic, 503kHz
X501	Crystal	5XE4R1943C	Quartz, 4.19MHz
X601	Crystal	5PCDA45E42	4.5MHz
Z201	Trap	5dPTS45MB	4.5MHz
Z601	Filter	5PSFE45MB	4.5MHz
	Antenna (3)	4850A02310	Rod
	Fuse Holder	4857415001	For F801 (2 Used)
	Fuse Holder	4857415001	For F802 (2 Used)
	Magnet	4850PM001	Purity/Convergence
	PC Board (1)(3)	4859800270	Main
	Wedge	48A96R004	Yoke Positioning (3 Used)

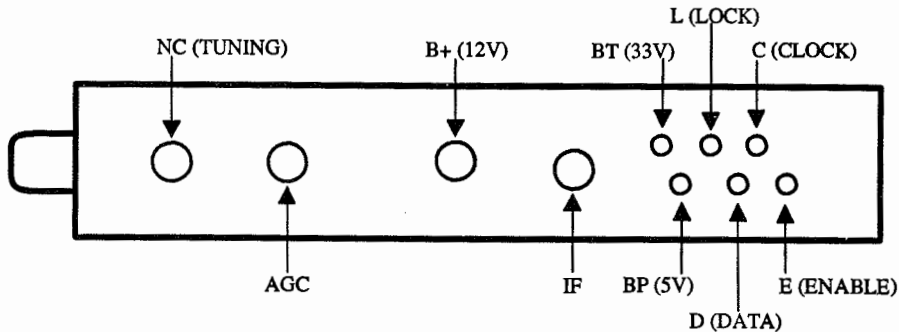
For SAFETY use only equivalent replacement part.
(1) Contact PTS Electronics Corporation for replacement; order by manufacturer's part number.
(2) Used in models DTQ-2023FC and DTQ-2046FC.
(3) Used in models DTQ-1446FC and DTQ-2046FC.

COILS & TRANSFORMERS

Item No.	Function/Rating	Mfr. Part No.	On-Unit No.
# DY	Yoke 90° Horiz 3.25mH Vert 28.7mH	58D1000046	ODY-M1401
# DY (1)	Yoke	58D1000045	ODY-M2002
L101	.56µH	-	-
L102	.56µH	5CPZ568M02	-
L201	56µH	-	-
L202	10µH	5CPZ100K02	-
L203	15µH	5CPZ150K02	-
L205	PIF	58B0000081	-
L206	.56µH	58RR56K014	-
L207	PIF	58B49R3041	-
L231	56µH	-	-
L232	15µH	5CPX150J	-
L243	33µH	5CPZ330K02	-
L401	Horizontal Linearity	58H0000019	-
L401 (1)	Horizontal Linearity	58H0000016	-
L402	Ferrite Bead	58C0000026	-
L403	10µH	50H0000132	-
L404	100µH	5CPZ101K02	-
L501	33µH	5CPZ330K02	-
L502	56µH	-	-
L503, 04, 05	33µH	5CPZ330K02	-
L601	15µH	5CPZ150K02	-
L602	22µH	5CPZ220K02	-
# L901	Degaussing	58G0000078	-
# L901 (1)	Degaussing	58G0000079	-

For SAFETY use only equivalent replacement part.
(1) Used in models DTQ-2023FC and DTQ-2046FC.

TUNER TERMINAL GUIDE



TEST EQUIPMENT

Test equipment listed by participating manufacturer illustrates typical or equivalent equipment used by Sams engineers to obtain measurements. This equipment is compatible with most types used by field service technicians.

Equipment	Sencore No.	Equipment	Sencore No.
Oscilloscope	SC3100	Isolation Transformer	PR57
Generators		Capacitance Analyzer	LC101, LC102
RGB	CM2000	CRT Analyzer	CR70
Multiburst Signal	VG91	AC Leakage Tester	PR57
Color Bar	VG91	Inductance Analyzer	LC101, LC102
TV Stereo	VG91	Flyback Yoke Tester	TVA92
Digital VOM	SC3100	TV Stereo Power Monitor	SR68, PA81
Frequency Meter	SC3100	Field Strength Meter	SL750
Hi-Voltage Probe	HP200	Transistor Tester	TF46
Accessory Probes	TP212	Video Analyzer	VG91, TVA92

TELEVISION SCHEMATIC

VOLTAGES TAKEN WITH SIGNAL
ADDITIONAL SCHEMATIC
NOTES, SEE PAGE 2D
A PHOTOFAC STANDARD NOTATION SCHEMATIC
WITH CIRCUITTRACE
© Howard W. Sams & Co. 1985

