

PHOTOFACT[®] with

CIRCUITRACE[®]

For Supplier Address See PHOTOFACT Index



MODEL 80BFM1

Models 80BFM1 (7898450) 78 Buick, Chevrolet, Oldsmobile, Pontiac, Trucks
81YFM1 (7898440) 78 Corvette

DELCO MODELS 80BFM1, 81YFM1

ALIGNMENT INSTRUCTIONS

Check for specified source voltage
Connect low sides of generator and
indicator to ground unless specified otherwise.
Use only enough generator output
to provide a usable indication.

Suggested Alignment Tools:

GC ELECTRONICS:

T1, T4, T5, T6. 9296
C4, C5, C6. 9051
L4, L5, C3. 9440

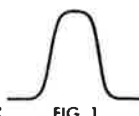


FIG. 1



FIG. 2

PUSH-BUTTON ADJUSTMENT

1. Pull button out.
2. Tune manually to desired station.
3. Press button in firmly.
4. Repeat for remaining buttons.

AM ALIGNMENT—SELECTOR IN AM POSITION

Connect output meter across speaker voice coil.

GENERATOR COUPLING	GENERATOR FREQUENCY	RADIO DIAL SETTING	ADJUST	REMARKS
High side thru .1uF	262kHz 400-Hz mod.	High freq end stop	T6,T5	Adjust for maximum.
Check setting of oscillator coil core L1C Rear of core should be 1-3/8" from mounting end of coil form.				
High side thru 82pF to antenna input	1615kHz	High freq end stop	C6,C5,C4	Adjust for maximum.
"	600kHz	600-kHz signal	L1C,L1B, L1A	Adjust for maximum. Repeat alignment.
With radio installed in car and antenna extended to desired height, tune in a weak station near 1400kHz and adjust C4 for maximum output. Antenna adjustment C4 is located thru access hole above tuning shaft.				

HOWARD W. SAMS & CO., INC. Indianapolis, Indiana 46206

© 1978 Howard W. Sams & Co., Inc. Printed in U. S. of America

8AN1101

FM IF ALIGNMENT USING AM SIGNAL GENERATOR—SELECTOR IN FM POSITION

High side of generator thru .001uF to antenna. NOTE: AM oscillator controls FM tuning. AM section must operate properly before FM section can be aligned.

GENERATOR FREQUENCY	RADIO DIAL SETTING	INDICATOR	ADJUST	REMARKS
10.7MHz Unmodulated	Point of non-interference	DC probe of VTVM to speaker	T1	Adjust for maximum.
"	"	DC probe of VTVM to speaker	T4	Adjust for MINIMUM
Tune to High End Stop		Probe of VTVM to point B	R80	Adjust R80 for 7.3V.

FM IF ALIGNMENT USING FM SIGNAL GENERATOR—SELECTOR IN FM POSITION

High side of generator thru .001uF to antenna.
Use 60-hertz, frequency-modulated signal, 450kHz sweep.
Use 60-hertz sawtooth voltage in scope for horizontal deflection.

GENERATOR FREQUENCY	RADIO DIAL SETTING	INDICATOR	ADJUST	REMARKS
10.7MHz 450kHz Sweep	Point of non-interference	Vert input of scope to point A.	T1	Adjust for maximum gain and symmetry of response similar to Fig. 1.
"	"	Vert input of scope to point C.	T4	Adjust T4 for maximum amplitude and straightness of line, similar to Fig. 2.

FM RF ALIGNMENT—SELECTOR IN FM POSITION

Connect generator across antenna terminals with 120-ohm carbon resistor in series with each lead. Adjustment of coils by bending should not be attempted unless the coil is deformed or replaced.

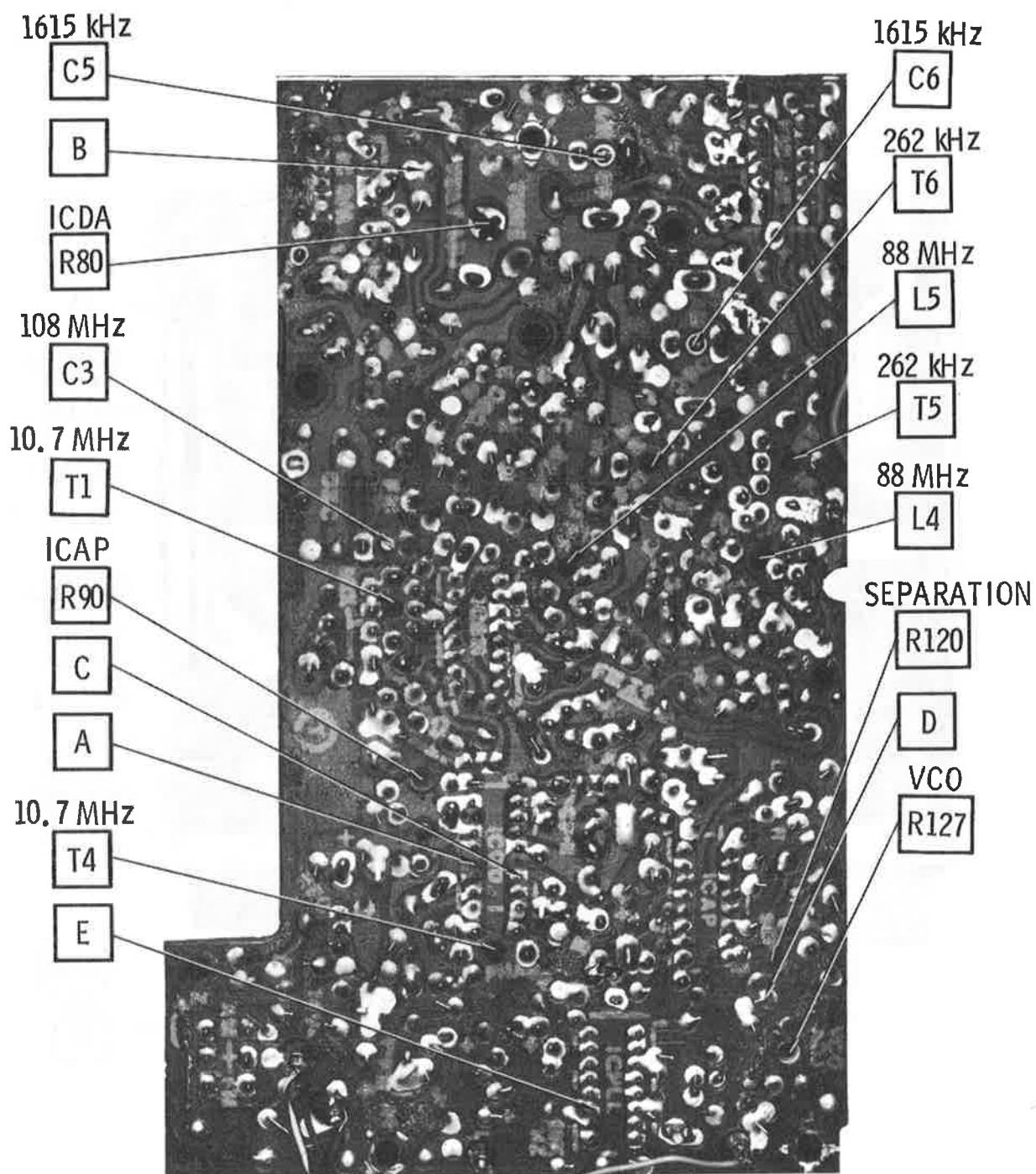
GENERATOR FREQUENCY	RADIO DIAL SETTING	INDICATOR	ADJUST	REMARKS
Unmodulated 108MHz	108MHz	DC probe of VTVM to point C	C3	Adjust for maximum.
Unmodulated 88MHz	88MHz	"	L5,L6,L4	Adjust for maximum. Repeat FM RF steps until no further improvement is noted.

(1) Before adjusting, vary generator frequency slightly. Maximum output indicates exact IF.

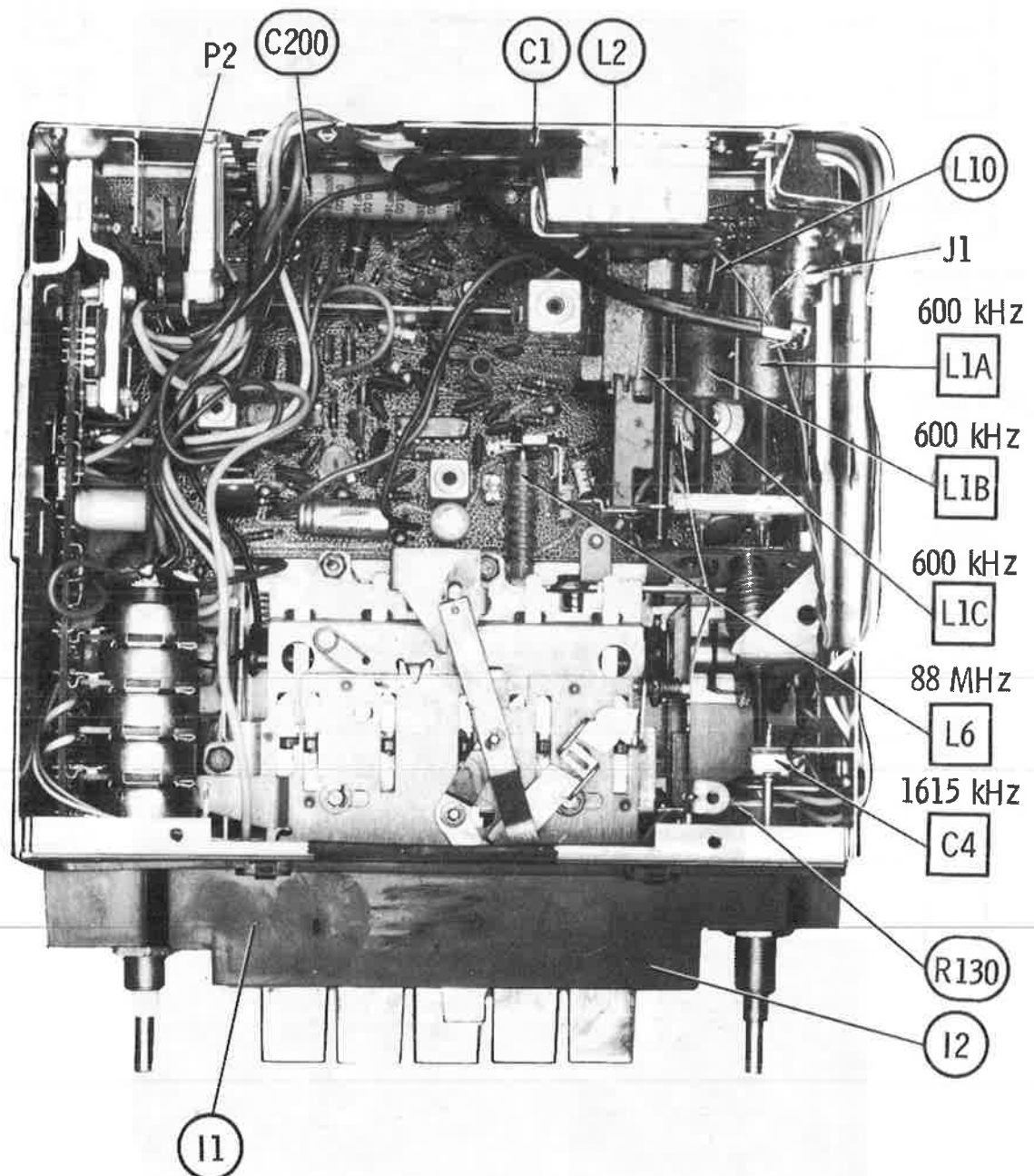
FM STEREO ALIGNMENT USING AUDIO GENERATOR

Ground point D.				
GENERATOR FREQUENCY	INDICATOR		ADJUST	REMARKS
	Connect Frequency Counter to point E		R127	Adjust for 19kHz ± 20 Hz.
	Tune to a strong stereo signal (1000uV)		R90 fully counterclockwise	Tune to signal. Adjust Volume for 0db reference on modulated channel.
	Decrease signal to 25uV		R90	Adjust for 1db drop on modulated channel.

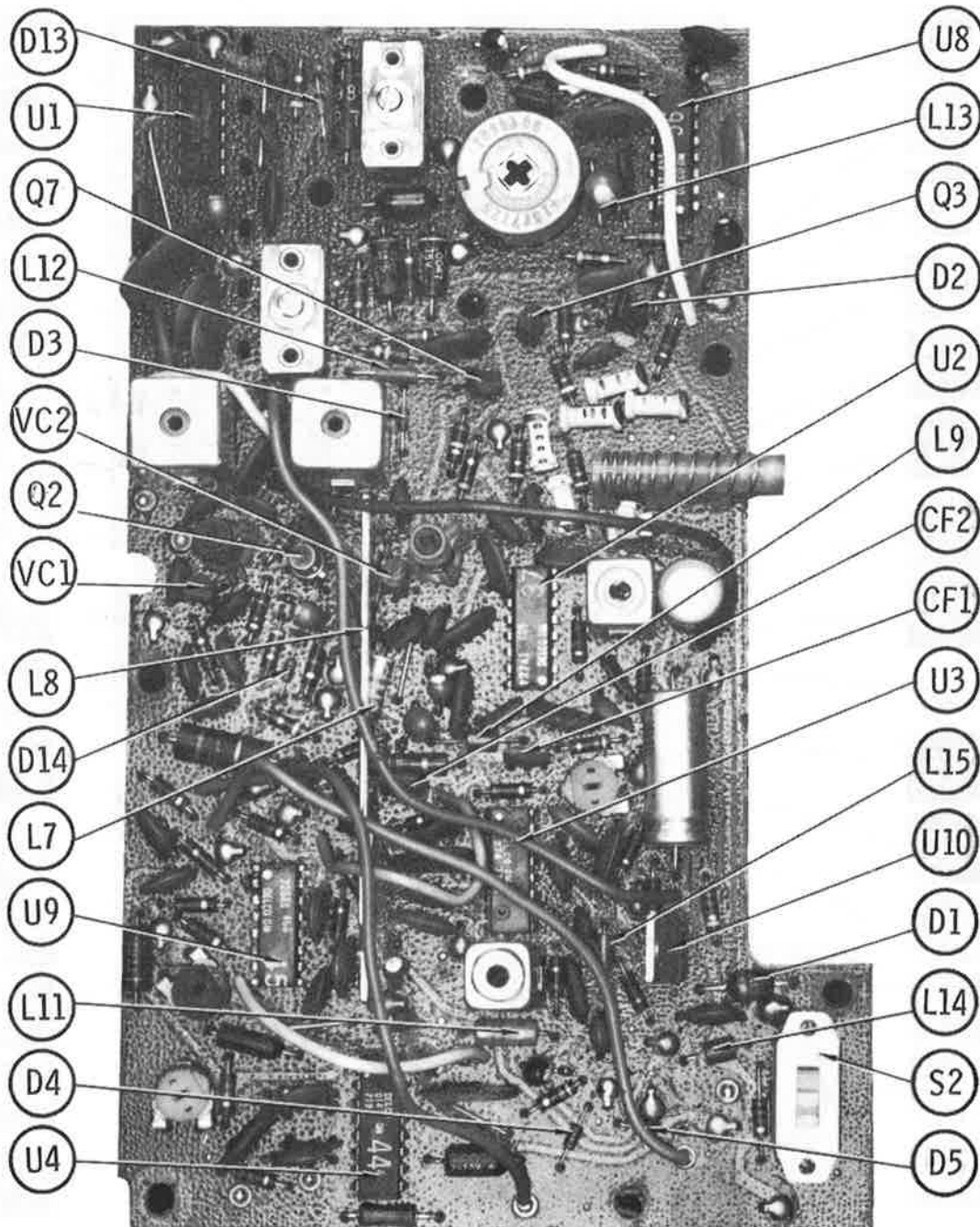
Tune receiver for a stereo signal. Adjust balance control for equal channel output. Adjust Separation control R120 for best separation.



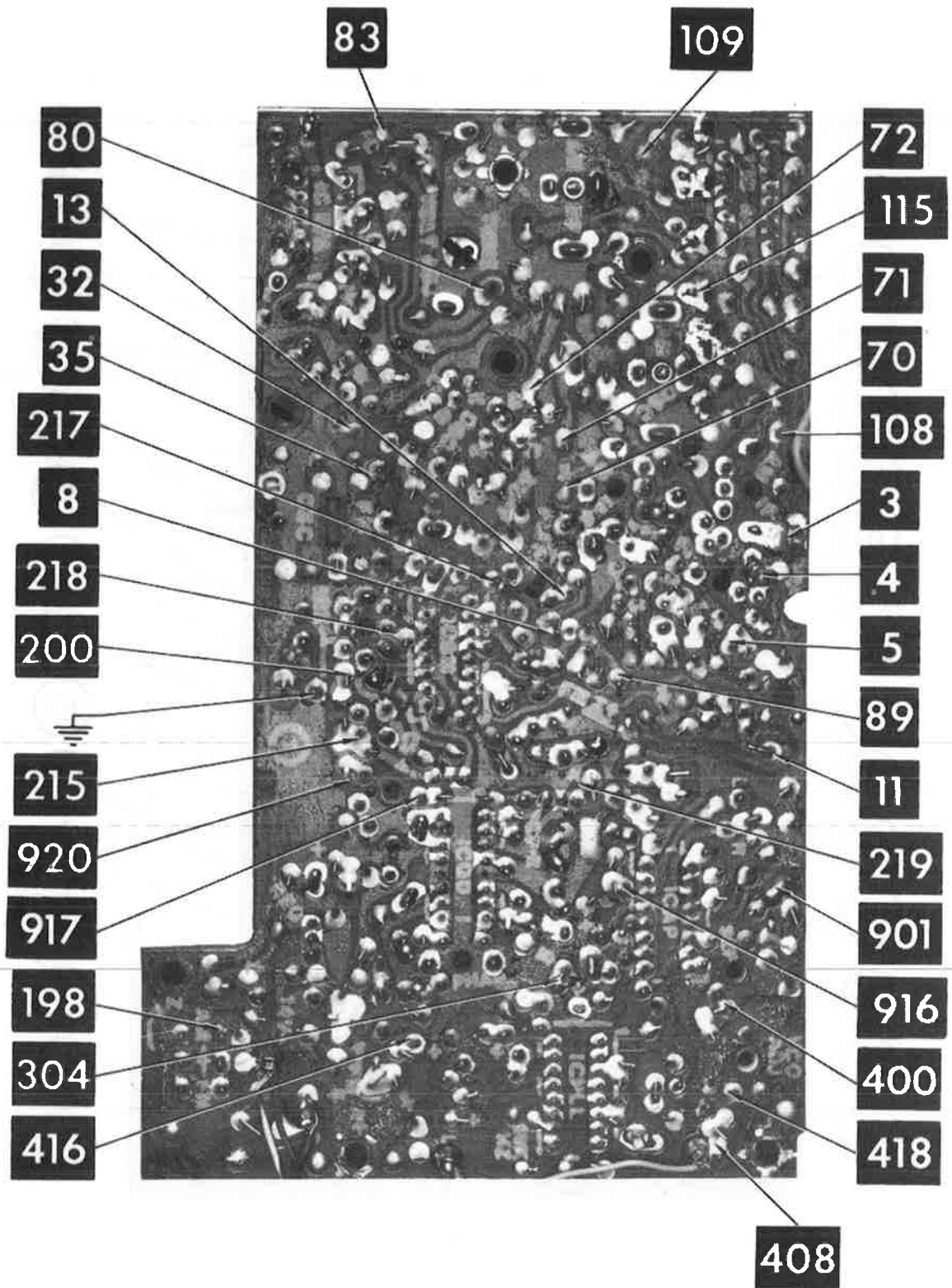
MAIN BOARD



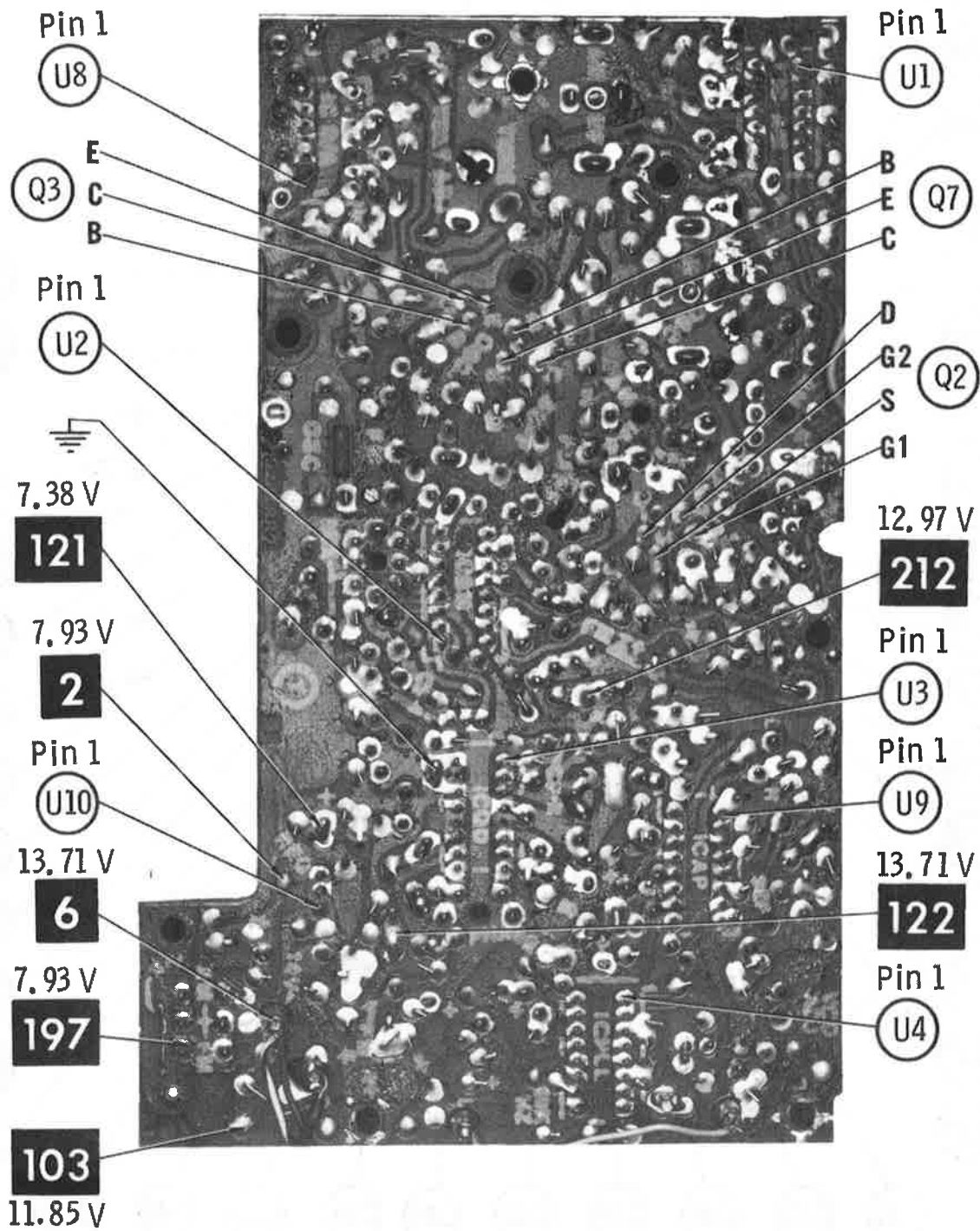
OVERALL-TOP VIEW



MAIN BOARD

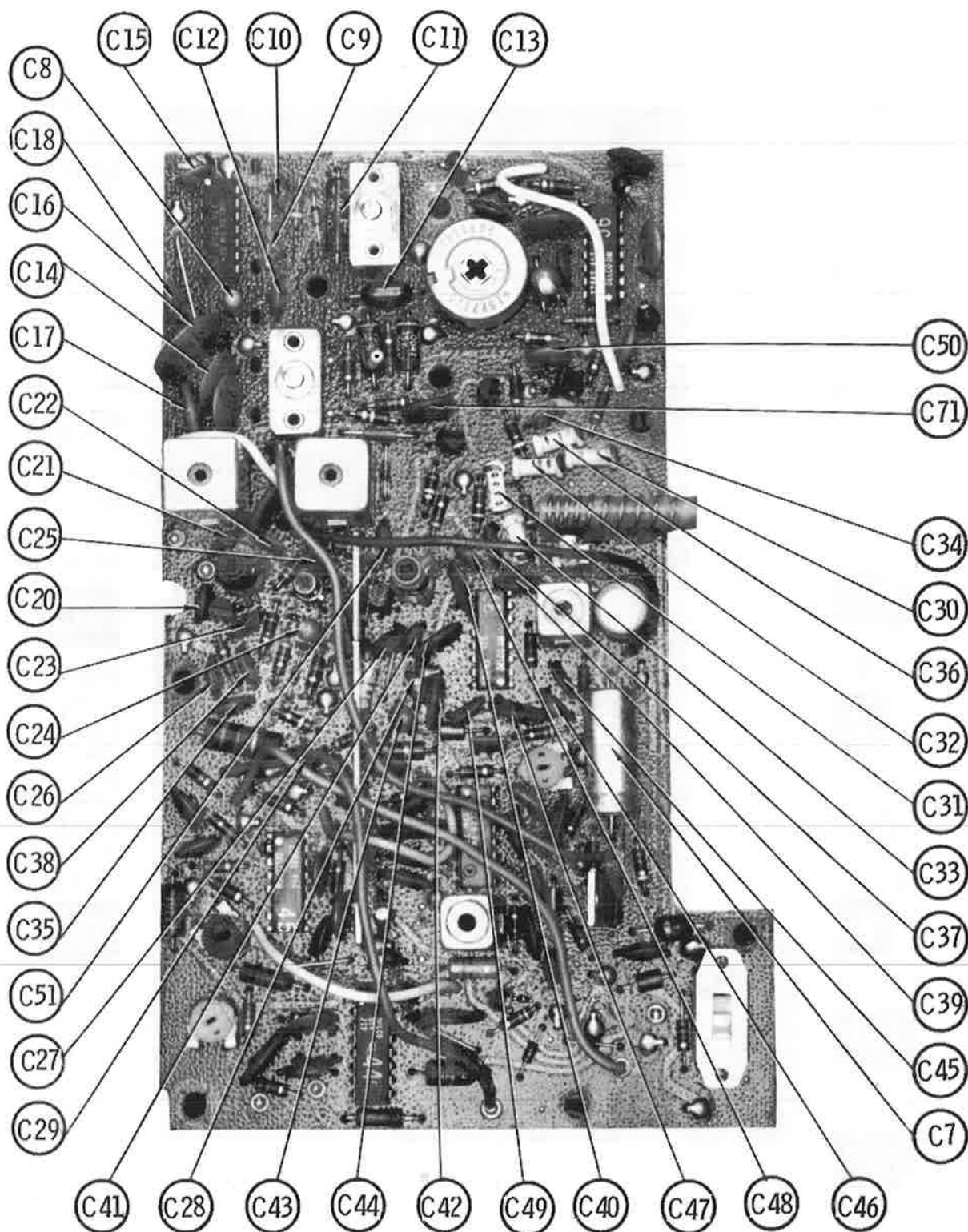


MAIN BOARD

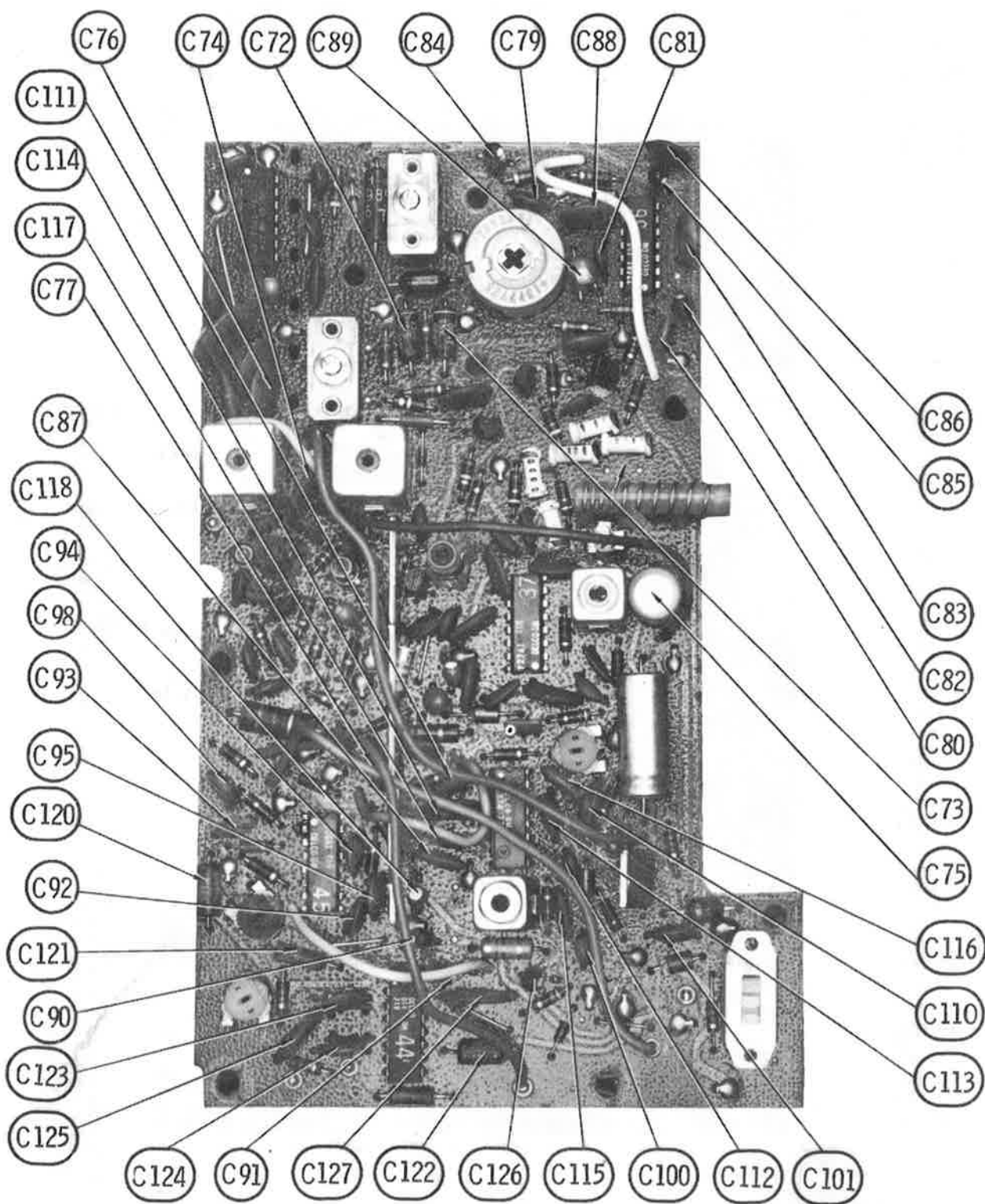


DELCO MODELS 80BFM1, 81YFM1

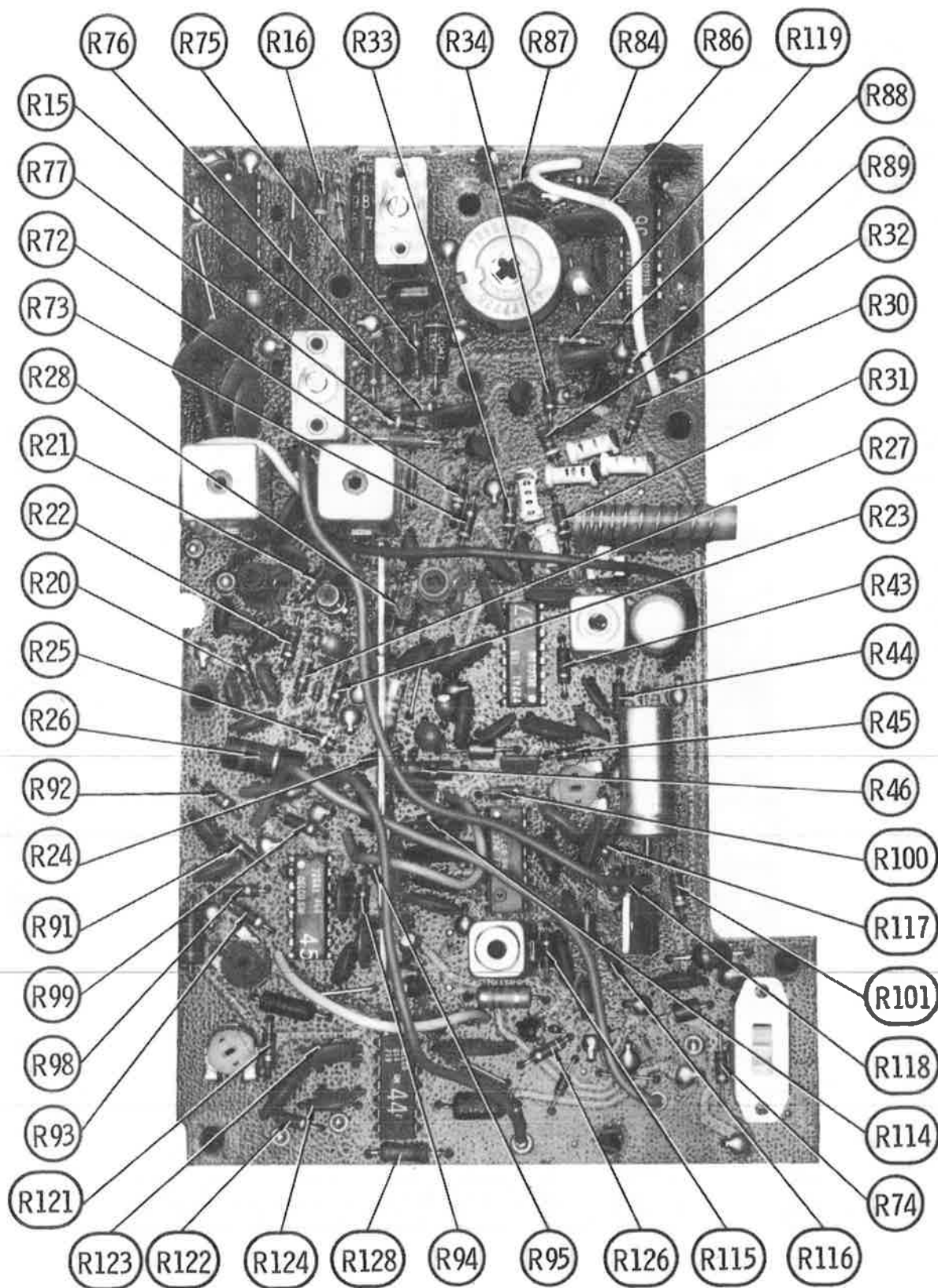
MAIN BOARD



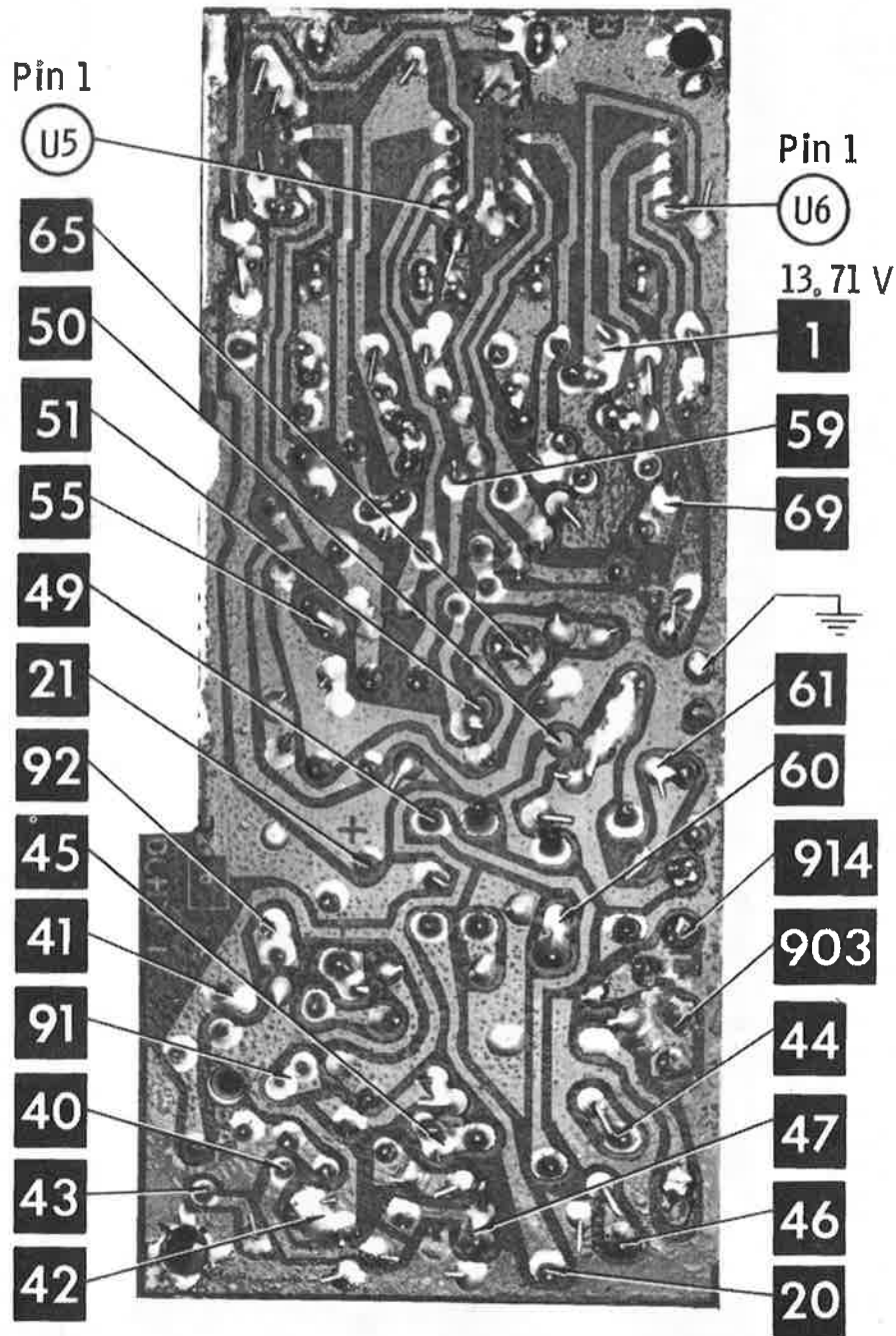
MAIN BOARD



MAIN BOARD

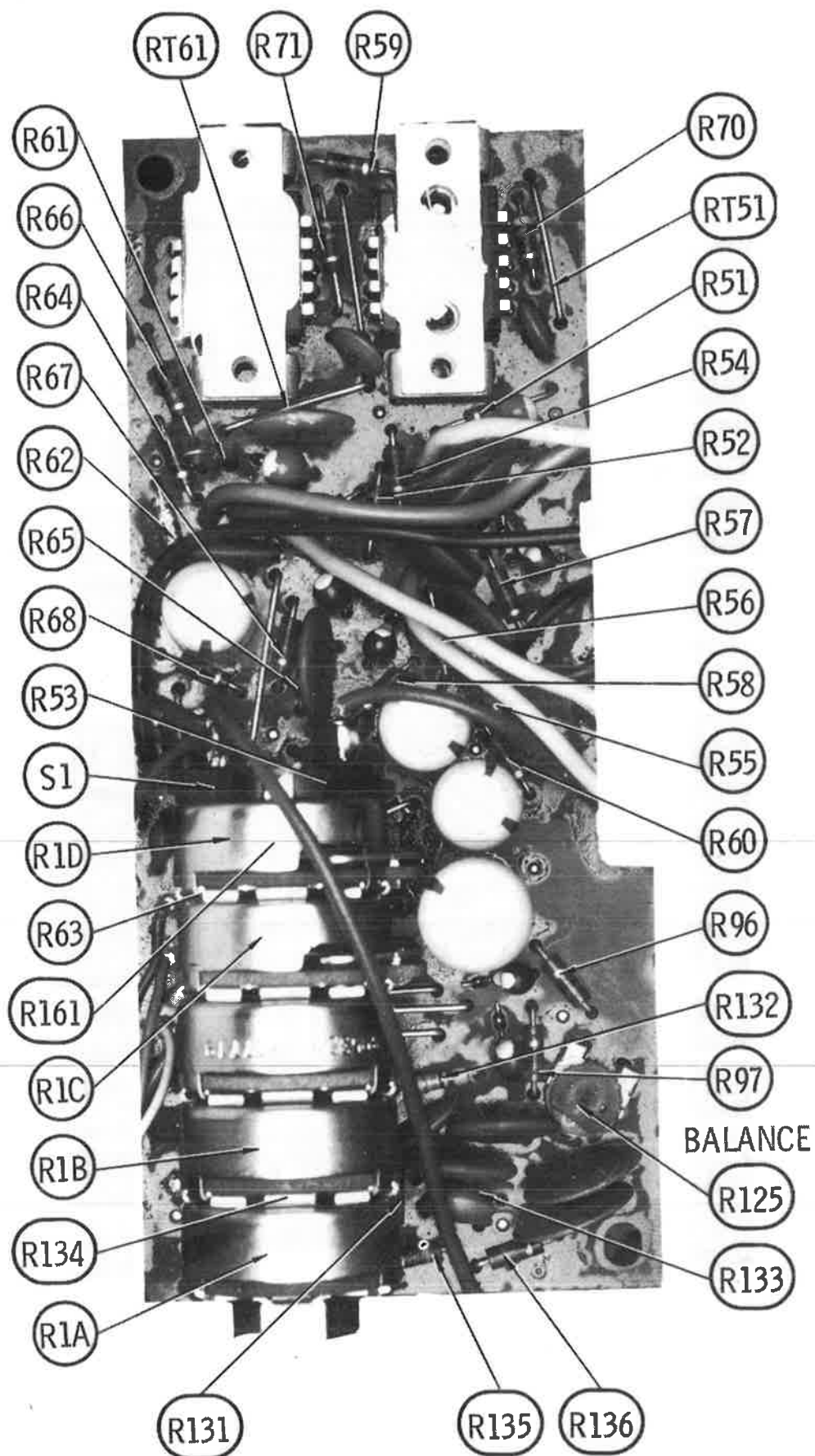


MAIN BOARD

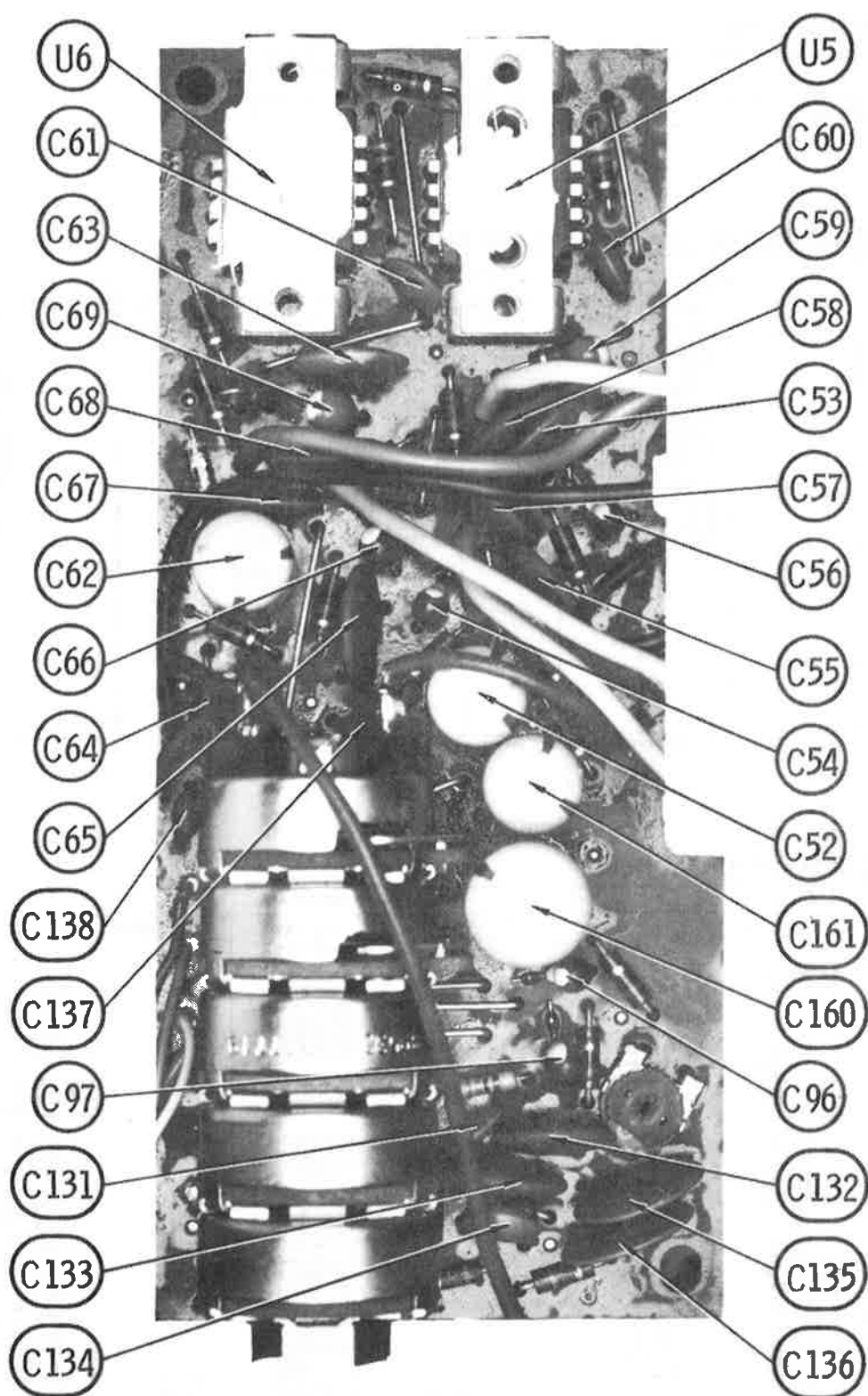


DELCO MODELS 80BFM1, 81YFM1

OUTPUT BOARD



OUTPUT BOARD



OUTPUT BOARD

PARTS LIST AND DESCRIPTION

(When ordering parts, state Model, Part Number, and Description.)

Replacement parts shown may be superseded by the availability of newly introduced replacements.
Have your local distributor check Sams COUNTER FACTS® for the most up-to-date replacement.

WIRING DATA

General-use Unshielded Hook-up Wire	Use BELDEN No. 8530 (Solid) Available in 13 Colors 8524 (Stranded) Available in 13 Colors
Shielded Hook-up Wire	Use BELDEN No. 8401 or 8421
Rear Seat Speaker Extension Cable	Use BELDEN No. 8782 (Stranded) Coded Parallel Leads
Bonding Strap	Use BELDEN No. 8661 (3/8 In.) or 8670 (3/4 In.)

SEMICONDUCTORS (Select replacement transistor for best results)

ITEM No.	TYPE No.	MFR. PART No.	REPLACEMENT DATA									
			GENERAL ELECTRIC PART No.	MALLORY PART No.	MOTOROLA PART No.	RAYTHEON PART No.	RCA PART No.	SPRAGUE PART No.	SYLVANIA PART No.	THORDARSON PART No.	WORKMAN PART No.	ZENITH PART No.
D1	DS-79		GE-504A	PTC201	HEPR0052	REN 116	SK3030	RT-213	ECG116	1N4004	WEP156	212-76-02
D2	BR-55		GE-90		HEPR2503	REN 614		RT-262	ECG614		WEP200	ZEN-453
	DS-55		GE-90		HEPR2503	REN 614		RT-262	ECG614		WEP200	ZEN-453
D3	DS-97		GE-300	PTC214	HEPR0602	REN 177	SK3100	RT-218	ECG177		WEP1062	
D4	DS-97		GE-300	PTC214	HEPR0602	REN 177	SK3100	RT-218	ECG177		WEP1062	
D5	DS-97		GE-300	PTC214	HEPR0602	REN 177	SK3100	RT-218	ECG177		WEP1062	
D13	DS-31		GE-300	PTC214	HEPR0602	REN 177	SK3100	RT-218	ECG177		WEP1062	
D14	DS-97		GE-300	PTC214	HEPR0602	REN 177	SK3100	RT-218	ECG177		WEP1062	
Q2	DS-105		GE-FET-4	PTC182	HEPF2007	REN 222	SK3065	RT-181	ECG222		WEP905	121-826
Q3	BQ-94		GE-210*	PTC115*	HEPS0015*	REN 123A	SK3124*	RT-108A*	ECG123A*		WEP736	
	DS-94		GE-210	PTC115*	HEPS0015*	REN 123A	SK3124*	RT-108A*	ECG123A*		WEP736	
Q7	BR-66		GE-20	PTC136	HEPS0015*	REN 123A	SK3124	RT-102	ECG123A		WEP736	ZEN-128
	DS-66		GE-20	PTC136	HEPS0015*	REN 123A	SK3124	RT-102	ECG123A		WEP736	ZEN-128
U1	DM-32		GEIC-215	PTC734		REN 744	SK3171	TVCN-19	ECG744		WEP2022	
U2	DM-37											
U3	DM-51		GEIC-229	PTC767		REN 788	SK3147	TVCN-39	ECG788		WEP2021	
U4	DM-44		GEIC-214	PTC729		REN 743	SK3172	TVCN-29	ECG743			
U5	DM-84											
U6	DM-84											
U8	DM-56											
U9	DM-45											
U10	DM-33											
VC1	BQ-190											
	DS-190											
VC2	BQ-190											
	DS-190											

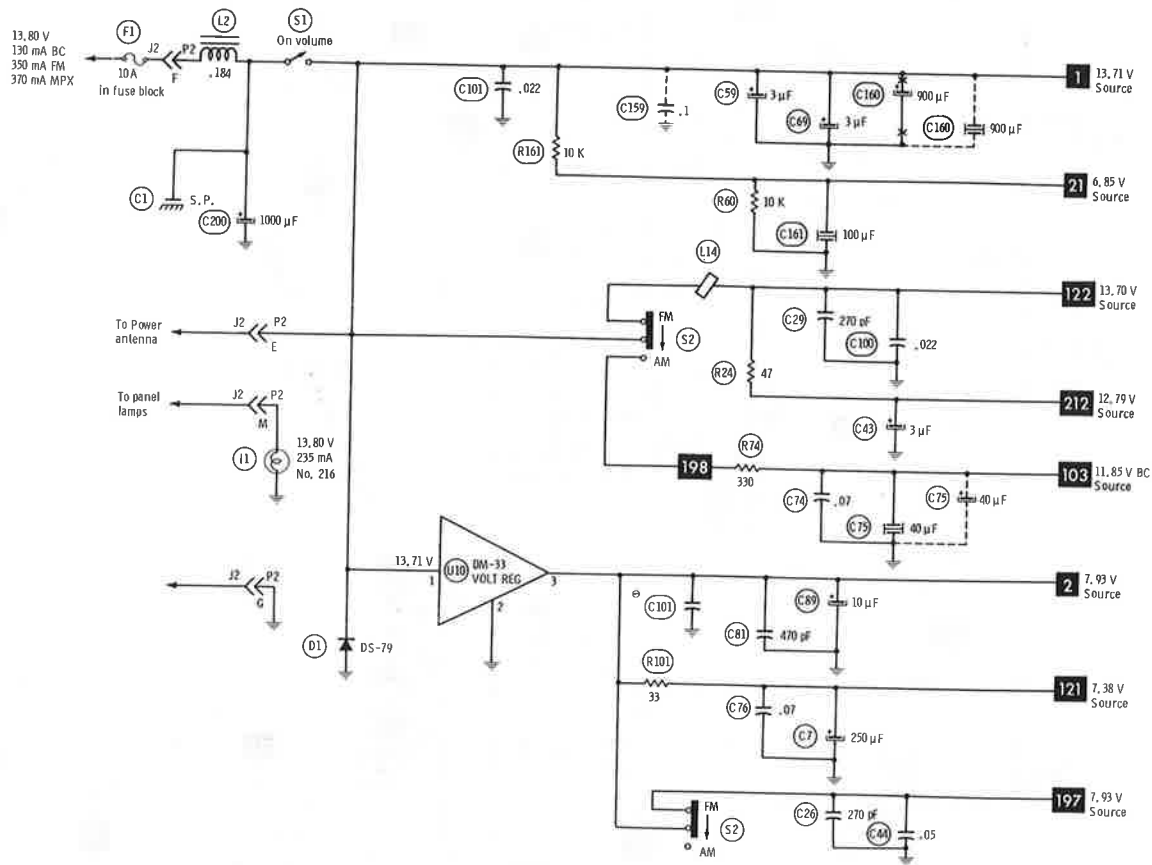
* Lead configuration may vary from original.

ELECTROLYTIC CAPACITORS

ITEM No.	RATING	REPLACEMENT DATA				
		MFR. PART No.	CORNELL-DUBILIER PART No.	MALLORY PART No.	SPRAGUE PART No.	
					Q-LINE	GENERAL LINE
C7	250 16V	7936628	WBR250-16	TT15X260A	QE1-495	TVA-1161
C8	3 10V	7296348		TDC335M015FL	QDT1-41	SD15-3R39
C11	40 6V	7298555		TDC476M006EL	QDT1-97	SD6-479
C24	3 35V	7936359		TDC335M035FL		SD35-3R39
C28	3 35V	7936359		TDC335M035FL		SD35-3R39
C43	3 35V	7936359		TDC335M035FL		SD35-3R39
C52	100 16V NP	9349947(1)				
C54	1 10V	7936365		TDC105M035EL		SD35-19
C56	1 10V	7936365		TDC105M035EL		SD35-19
C59	3 35V	7936359		TDC335M035FL		SD35-3R39
C62	100 16V NP	9349947(1)				
C64	1 10V	7930782		TDC705M035EL		SD35-19
C66	1 10V	7936365		TDC105M035EL		SD35-19
C69	3 35V	7936359		TDC335M035FL		SD35-3R39
C75	40 16V NP	9340269(1)				
C82	.33 35V	7936748		TDC334M050EL	QDT1-14	SD50-R339
C84	.33 35V	7936748		TDC334M050EL	QDT1-14	SD50-R339
C85	.33 35V	7936748		TDC334M050EL	QDT1-14	SD50-R339
C89	10 16V	7936360		TDC106M025FL	QDT1-64	SD25-109
C90	.33 35V	7936748		TDC334M050EL	QDT1-14	SD50-R339
C91	.33 35V	7936748		TDC334M050EL	QDT1-14	SD50-R339
C96	1 10V	7936365		TDC105M035EL		SD35-19
C97	1 10V	7936365		TDC105M035EL		SD35-19
C118	3 10V	7296348		TDC335M015FL	QDT1-41	SD15-3R39
C119	1 10V	7936365		TDC105M035EL		SD35-19
C121	2 10V	7313127		TDC225M035FL		SD35-2R29
C122	2 10V	7313127		TDC225M035FL		SD35-2R29
C126	.33 35V	7936748		TDC334M050EL	QDT1-14	SD50-R339
C160	900 16V		PC1000-16	VTT1000L16	QV1-183	EV-1260
	900 16V NP	7898283(2)				
C161	100 16V NP	9349947(1)				
C200	1000 16V	9341267	WBR1000-16	TT15X1000B	QE1-591	TVA-1163

(1) Maximum length 3/4".

(2) Maximum length 1 3/4".



—*— Circuitry not used in some versions

--- Circuitry used in some versions

⊙ See parts list

* Nominal value

⊥ Ground

Chassis

▽ Common tie point

→ Signal path

↗ Voltage path

Measurements with switching as shown unless noted.

Item numbers in rectangles appear in the alignment/adjustment instructions.

Supply voltage maintained as shown at input.

Voltages measured with digital meter, no signal.

Controls adjusted for normal operation.

Arrow at control indicates direction of advance.

Terminal identification may not be found on unit.

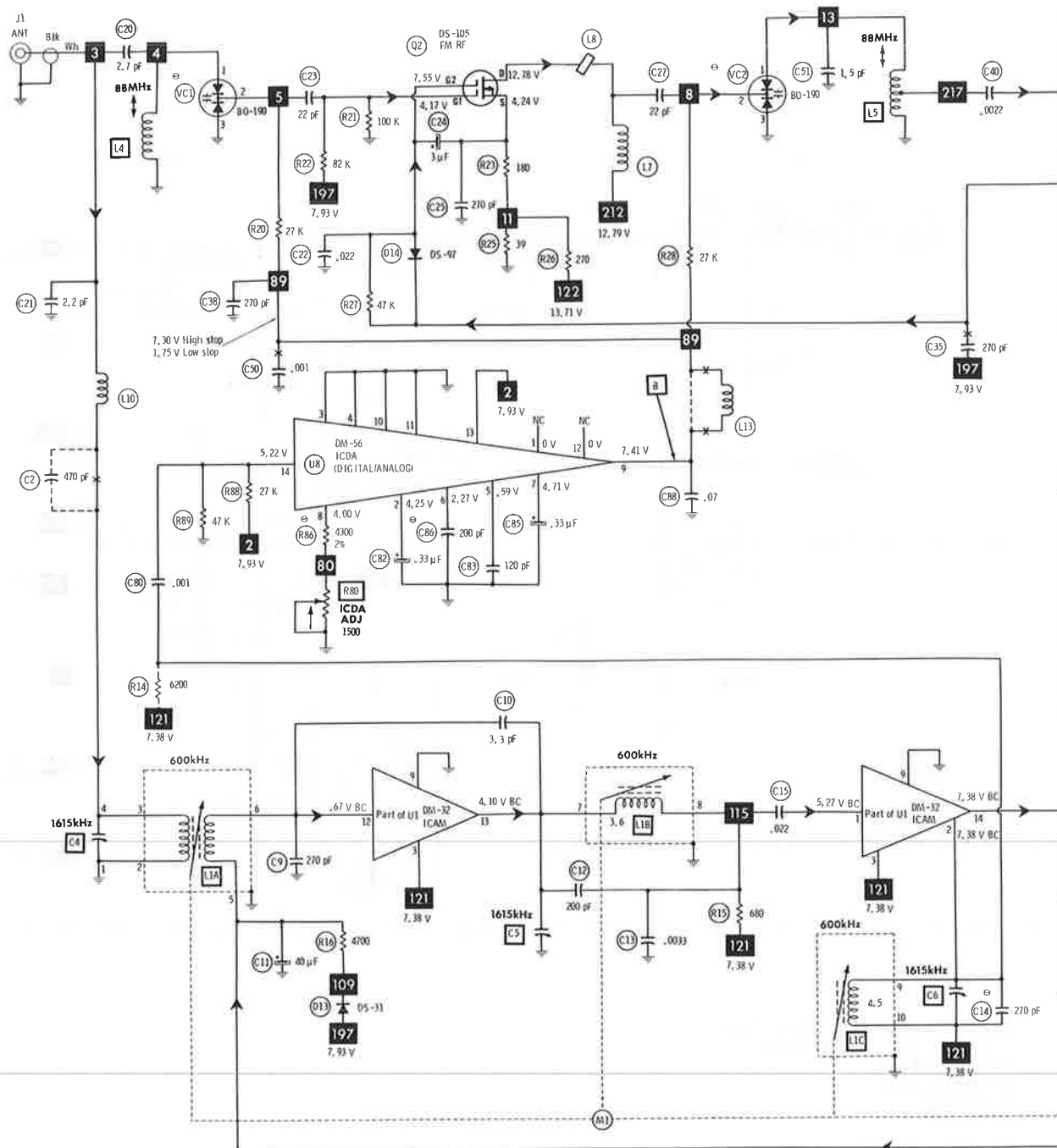
Resistors are 1/2W or less, 10% unless noted.

Value in () used in some versions.

A PHOTOFAC STANDARD NOTATION SCHEMATIC

WITH **CIRCUITRACE®**

© Howard W. Sams & Co., Inc. 1978



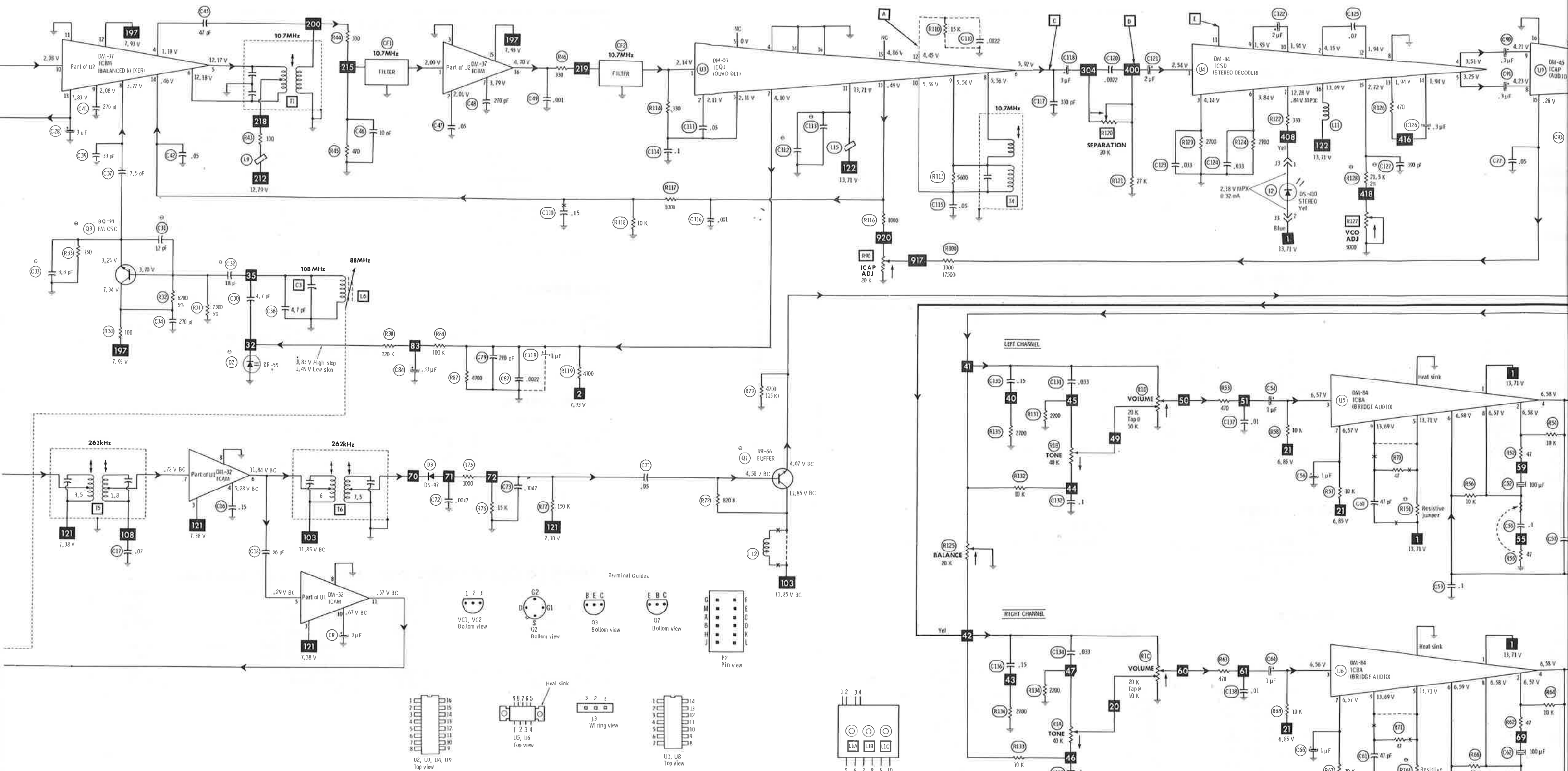
- ✖ Circuitry not used in some versions
- Circuitry used in some versions
- ⊕ See parts list
- * Nominal value
- ⊥ Ground
- ⏏ Chassis
- ▽ Common tie point
- Signal path
- ⤴ Voltage path

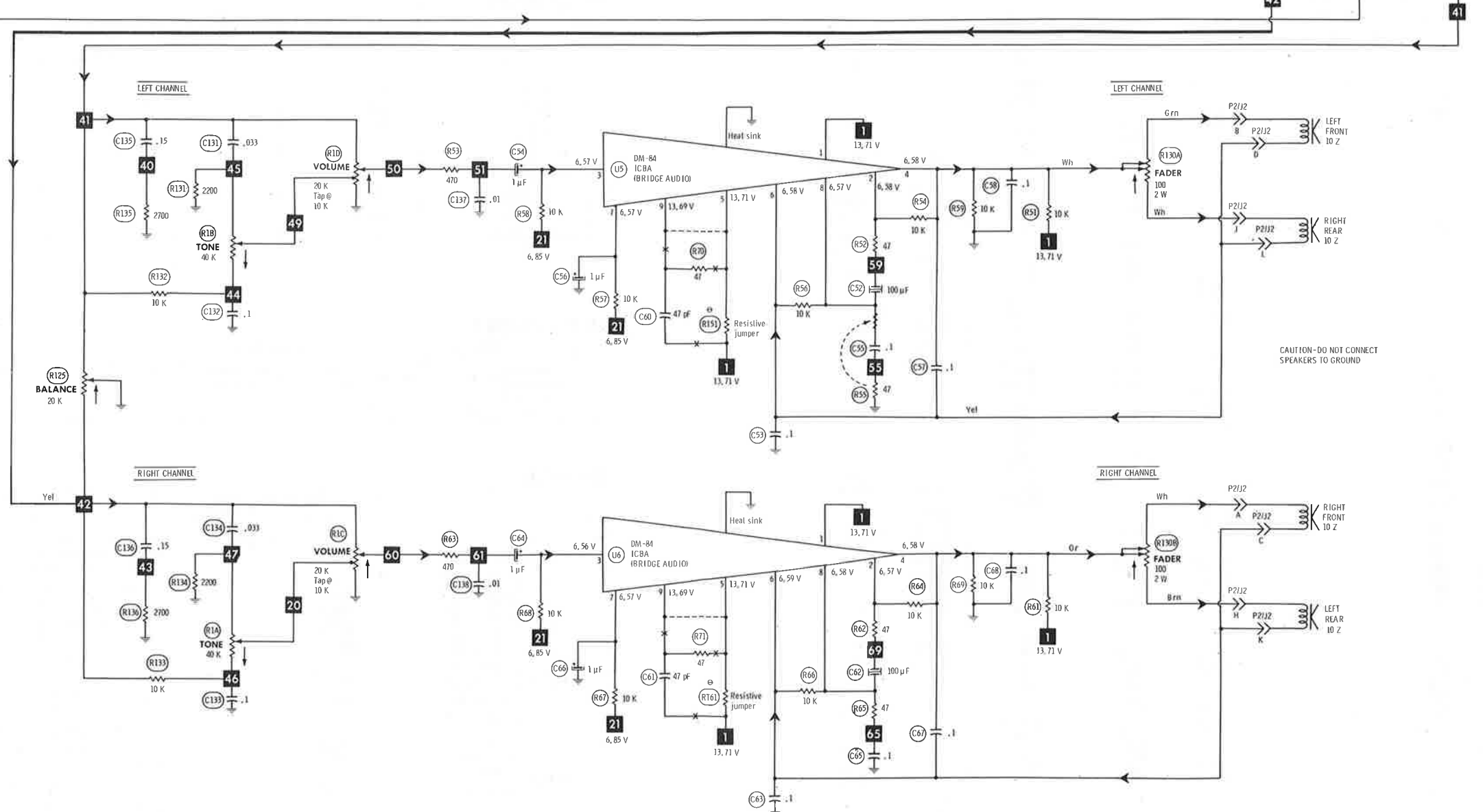
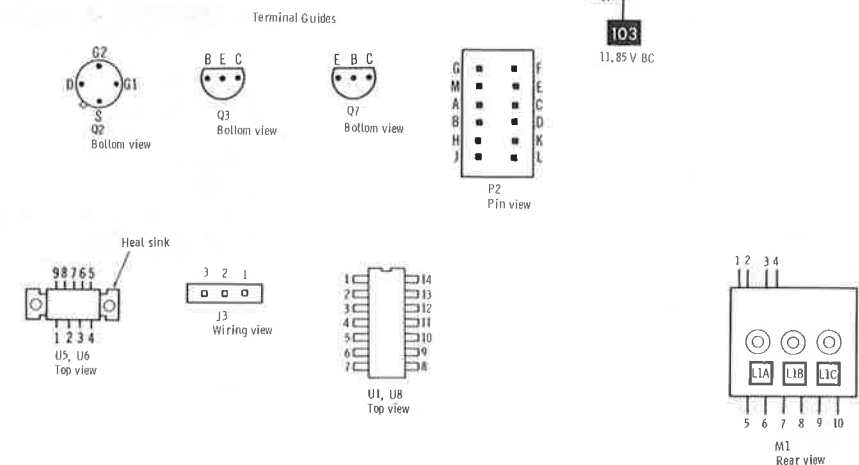
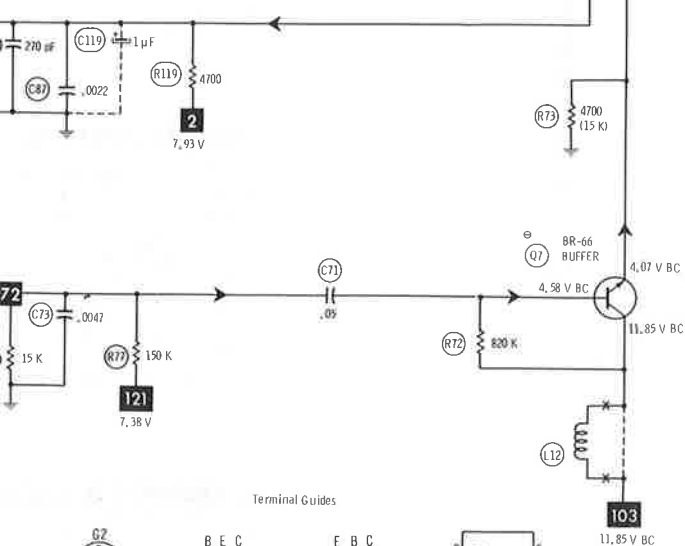
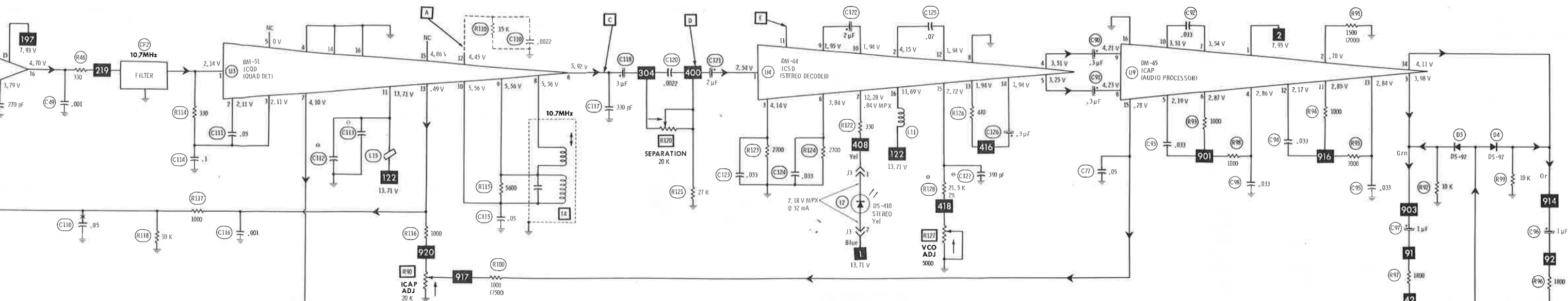
A PHOTOFAC STANDARD NOTATION SCHEMATIC
WITH **CIRCUITTRACE**[®]
© Howard W. Sams & Co., Inc. 1978

Measurements with switching as shown
unless noted.

Item numbers in rectangles appear in the
alignment/adjustment instructions.

Supply voltage maintained as shown at input.
Voltages measured with digital meter, no signal.
Controls adjusted for normal operation.
Arrow at control indicates direction of advance.
Terminal identification may not be found on unit.
Resistors are 1/2W or less, 10% unless noted.
Value in () used in some versions.





PARTS LIST AND DESCRIPTION (CONTINUED)

(When ordering parts, state Model, Part Number, and Description.)

Replacement parts shown may be superseded by the availability of newly introduced replacements.

Have your local distributor check Sams COUNTER FACTS® for the most up-to-date replacement.

CAPACITORS

ITEM No.	RATING	MFG. PART No.	REPLACEMENT DATA					
			CENTRALAB PART No.	CORNELL-DUBILIER PART No.	MALLORY PART No.	SPRAGUE		PART No.
						Q-LINE	GENERAL LINE	
C1	470	9348419 16001446 7936524 7311368	DD-471	GP470	GP347	QC2-107	10TS-T47	
C2								
C3								
C4								
C5								
C6								
C9	270	7896854	DD-271	GP270	GP327	QC2-157	10TS-T27	
C10	3.3		DTZ-3R3	NP03P3	CN0533		10TCC-V33	
C12	200		DD-201	GP200	GP320		10TS-T20	
C13	.0033		DD-332	GP3300	GP233		5GA-A-33	
C14	270 N220		DC-203	MGP02	TA120		TG-S20	
C15	.022		UK25-154		MAG25015		HY-765	
C16	.15		UK50-683		MAG50168			
C17	.07		DD-560		GP456		10TS-Q56	
C18	56		DTZ-2R2	NP02P2	CN0522		10TCC-V22	
C20	2.7		DTZ-2R2	NP02P2	CN0522		10TCC-V22	
C21	2.2		DC-203	MGP02	TA120		TG-S20	
C22	.022		DTZ-22	NP022	CN0422		10TCC-Q22	
C23	22		DD-271	GP270	GP327		10TS-T27	
C25	270		DD-271	GP270	GP327		10TS-T27	
C26	270	DTZ-22	NP022	CN0422	10TCC-Q22			
C27	22	DD-271	GP270	GP327	10TS-T27			
C29	270	DD-271	NP022	CN0422	10TCC-Q22			
C30	4.7 100V N330	9341450	DD-271	GP270	GP327	10TS-T27		
C31	12 100V N330	7897760	DD-271	GP270	GP327	10TS-T27		
C32	18 100V NP0	9341429	DTZ-6R8	NP06P8	CN0568	10TCC-V68		
C33	3.3 100V N330		DD-271	GP270	GP327	10TS-T27		
C34	270		DD-271	GP270	GP327	10TS-T27		
C35	270		DTZ-33	NP033	CN0433	10TCC-Q33		
C36	4.7 100V N150		DD-222	GP270	GP222	5GA-D22		
C37	7.5		DD-271	GP270	GP327	10TS-T27		
C38	270		DC-503	MGP05	TA150	10TCC-Q10		
C39	33		DC-503	MGP05	TA150	TG-S50		
C40	.0022		DTZ-47	NP047	CN0447	10TCC-Q47		
C41	270		NP010	NP010	CN0410	10TCC-Q10		
C42	.05		DC-503	MGP05	TA150	TG-S50		
C44	.05		DD-271	GP270	GP327	10TS-T27		
C45	47		DD-102G	GP1000	GP210	5GA-D10		
C46	10		DD-102G	GP1000	GP210	5GA-D10		
C47	.05	DTZ-1R5	NP01P5	CN0515	10TCC-V15			
C48	270	DC-104	MGP1	TA010	TG-P10			
C49	.001	DC-104	MGP1	TA010	TG-P10			
C50	.001	DC-104	MGP1	TA010	TG-P10			
C51	1.5	DTZ-47	NP047	CN0447	10TCC-Q47			
C53	.1	DTZ-47	NP047	CN0447	10TCC-Q47			
C55	.1	DC-104	MGP1	TA010	TG-P10			
C57	.1	DC-104	MGP1	TA010	TG-P10			
C58	.1	DC-104	MGP1	TA010	TG-P10			
C60	47	DC-104	MGP1	TA010	TG-P10			
C61	47	DC-104	MGP1	TA010	TG-P10			
C63	.1	DC-104	MGP1	TA010	TG-P10			
C65	.1	DC-104	MGP1	TA010	TG-P10			
C67	.1	DC-104	MGP1	TA010	TG-P10			
C68	.1	DC-104	MGP1	TA010	TG-P10			
C71	.07	UK50-683	WMF1D47	WMF1A247	QF1-57	1PB-D47		
C72	.0047		WMF1D47	WMF1A247	QF1-57	1PB-D47		
C73	.0047							
C74	.07	UK50-683	UK50-683	MAG50168				
C76	.07	UK50-683	UK50-683	MAG50168				
C77	.05	DC-503	MGP05	TA150	QC2-207	TG-S50		
C79	270	DD-271	GP270	GP327	10TS-T27			
C80	.001	DD-102G	GP1000	GP210	5GA-D10			
C81	470	DD-471	GP470	GP347	10TS-T47			
C83	120	DTZ-120		CN0312	10TCC-T12			
C86	200 100V N750	DTN-200			10TCC-T20			
C87	.0022	DD-222		GP222	5GA-D22			
C88	.07	UK50-683		MAG50168				
C92	.033	DC-303	MGP03		QC2-181	TG-S30		
C93	.033	DC-303	MGP03		QC2-181	TG-S30		
C94	.033	DC-303	MGP03		QC2-181	TG-S30		
C95	.033	DC-303	MGP03		QC2-181	TG-S30		
C98	.033	DC-303	MGP03		QC2-181	TG-S30		
C100	.022	DC-203	MGP02		QC2-157	TG-S20		
C101	.022	DC-203	MGP02	TA120	QC2-157	TG-S20		
C110	.05	DC-503	MGP05	TA150	QC2-207	TG-S50		
C111	.05	DC-503	MGP05	TA150	QC2-207	TG-S50		
C112		7895980 (1)						
C113		7896282 (2)						
C114	.1		DC-104	MGP1	TA010	TG-P10		
C115	.05		DC-503	MGP05	TA150	TG-S50		
C116	.001		DD-102G	GP1000	GP210	5GA-D10		
C117	330		DD-331	GP330	GP333	10TS-T33		
C120	.0022		DC-303	DPMS6022	EW6222	6PS-D22		
C123	.033		DC-303	MGP03		QC2-181		
C124	.033		DC-303	MGP03		QC2-181		
C125	.07		UK50-683		MAG50168			
C127	390 16V		DD-391	GP390	GP339	10TS-T39		
C131	.033		DC-303	MGP03		QC2-181		
C132	.1		DC-104	MGP1	TA010	TG-P10		
C133	.1		DC-104	MGP1	TA010	TG-P10		
C134	.033		DC-303	MGP03		QC2-181		
C135	.015		DC-203	MGP02	TA120	TG-S20		
C136	.015		DC-203	MGP02	TA120	TG-S20		
C137	.01		DC-103	MGP01	TA110	TG-S10		
C138	.01		DC-103	MGP01	TA110	TG-S10		
C159	.1		DC-104	MGP1	TA010	TG-P10		

* Not normally in distributor's stock. Available thru distributor on order to manufacturer.

(1) 2 Ohms @ 10.7MHz 25V Bypass.

(2) 2 Ohms @ 10.7MHz 50V Bypass.

PARTS LIST AND DESCRIPTION (CONTINUED)

(When ordering parts, state Model, Part Number, and Description.)

Replacement parts shown may be superseded by the availability of newly introduced replacements.

Have your local distributor check Sams COUNTER FACTS[®] for the most up-to-date replacement.

CONTROLS (All wattages 1/2 watt, or less, unless listed)

ITEM No.	FUNCTION	RESIST-ANCE	REPLACEMENT DATA			
			MFGR. PART No.	CENTRALAB PART No.	MALLORY PART No.	TRW PART No.
RTA	Tone-Right	40K	7895320			
B	Tone-Left	40K				
C	Volume-Right	20K Tap @ 10K				
D	Volume-Left	20K Tap @ 10K				
	Power Switch					
R80	ICDA	1500	9348417	WF-600	MR600F	110-600
R90	ICAP Adj.	20K	9349022			U260R253B
R120	Separation	20K	9349022			U260R253B
R125	Balance	20K	9349022			U260R253B
R127	VCO Adj.	5000	9349445			U260R502B
R130A	Fader-Left	100 2W	7899383			
R130B	Fader-Right	100 2W				

COILS (RF-IF)

ITEM No.	FUNCTION	REPLACEMENT DATA			REMARKS
		PART No.	OTHER IDENTIFICATION	MILLER PART No.	
L1A	AM Antenna	(1)			
B	AM RF	(1)			
C	AM Oscillator	(1)			
L4	FM Antenna	9348413			
L5	FM RF	9348414			
L6	FM Oscillator	9348415			
L7	RF Choke	7934553		4610	
L10	RF Choke	7255738		4610	
L11	RF Choke				
L12	RF Choke				
L13	RF Choke				
T1	IF (10.7MHz)	9346544			
T4	Quadrature (10.7MHz)	9346543			
T5	IF (262KHz)	9349015			
T6	IF (262KHz)	9349372			

(1) Part of M1.

FILTER CHOKE

ITEM No.	RATINGS			REPLACEMENT DATA			NOTES
	CURRENT (Measured)	DC RES.	INDUCTANCE (0 CURRENT 1000~)	MFRG. PART No.	THORDARSON PART No.	TRIAD PART No.	
L2	370mA	.184	35mH	7302543			

SPEAKER

ITEM No.	TYPE	REPLACEMENT DATA		NOTES
		MFG. PART No.	QUAM PART No.	
	3 1/2" Rd PM 10 Ohms 6" X 9" PM 10 Ohms (Deep Basket)	16000680 9348870		Front-Left,Right-Century Rear-Left,Right-Century,Cutlass,Lemans,Riviera
	4" X 10" PM 10 Ohms 3 1/2" Rd PM 10 Ohms	7898980 7895000		Rear-Left,Right-Century,Lemans Front-Left,Right-Lemans
	4" X 10" PM 10 Ohms 4" X 10" PM 10 Ohms	7896870 1224050		Front-Lemans Rear-Left,Right-Riviera
	4" X 10" PM 10 Ohms 4" X 10" PM 10 Ohms	7938401 7933971		Rear-Left-G-Van,Medium Duty Front-Camaro
	6" X 9" PM 10 Ohms (Deep Basket)	9348870		Rear-Right-Camaro,Firebird
	4" X 10" PM 10 Ohms 4" X 10" PM 10 Ohms	16004172 16002011		Front-Firebird Front-Monza,Sunbird,Skyhawk,Starfire
	6" X 9" PM 10 Ohms (Deep Basket)	9348870		Rear-Right,Monza,Sunbird,Skyhawk,Starfire
	4" X 10" PM 10 Ohms	9349690		Rear-Right,Monza,Sunbird,Skyhawk,Starfire Nova,Skylark,Omega
	4" X 10" PM 10 Ohms 6" 9" PM 10 Ohms	9349690 9348870		Front-Nova,Skylark,Omega Rear-Left,Right-Nova,Skylark,Omega
	(Deep Basket) 4" X 10" PM 10 Ohms	9349690		Rear-Left,Right-Motor Home
	3 1/2" Rd PM 10 Ohms 4" X 10" PM 10 Ohms	16001981 7938401		Front-Left,Right-EI Camino Front-Chevy Pick-up

PARTS LIST AND DESCRIPTIONS

(When ordering parts, state Model

Replacement parts shown may be

Have your local distributor check

SPEAKER (cont)

ITEM No.	TYPE
	4" X 6" PM 10 Ohms
	4" X 10" PM 10 Ohms
	4" X 10" PM 10 Ohms
	6" X 9" PM 10 Ohms
	(Shallow Basket)
	4" X 6" PM 10 Ohms
	4" X 10" PM 10 Ohms
	6" X 9" PM 10 Ohms
	(Shallow Basket)
	3 1/2" Rd PM 10 Ohms
	6" X 9" PM 10 Ohms
	(Deep Basket)

FUSE DEVICES

ITEM No.	DESCRIPTION
F1	10A

MISCELLANEOUS

ITEM No.	PART NAME
CF1	Ceramic Filter
CF2	Ceramic Filter
I1	Lamp
I2	LED
J1	Socket
J7	Socket
M1	Tuner Coil Assembly
S1	Switch
S2	Switch

(1) When replacing, CF1 and C

CABINETS & CABINETS

ITEM
Escutcheon 80BFMI
Escutcheon 81YFMI
Dial Glass 80BFMI
Dial Glass 81YFMI
Dial Pointer
Pushbutton 80BFMI
Pushbutton 81YFMI
Knob Package, Chevrolet
Knob Package, Chevelle, Monte
Knob Package, Nova, Omega, Sky
Knob Package, Camaro

PARTS LIST AND DESCRIPTION (CONTINUED)

(When ordering parts, state Model, Part Number, and Description.)

Replacement parts shown may be superseded by the availability of newly introduced replacements.
Have your local distributor check Sams COUNTER FACTS® for the most up-to-date replacement.

CONTROLS (All wattages 1/2 watt, or less, unless listed)

ITEM No.	FUNCTION	RESIST-ANCE	REPLACEMENT DATA			
			MFGR. PART No.	CENTRALAB PART No.	MALLORY PART No.	TRW PART No.
RIA B C D	Tone-Right Tone-Left Volume-Right Volume-Left Power Switch	40K 40K 20K Tap @ 10K 20K Tap @ 10K	7895320			
R80 R90 R120 R125 R127 R130A R130B	ICDA ICAP Adj. Separation Balance VCO Adj. Fader-Left Fader-Right	1500 20K 20K 20K 5000 100 2W 100 2W	9348417 9349022 9349022 9349022 9349445 7899383	WF-600	MR600F	110-600 U260R253B U260R253B U260R253B U260R502B

COILS (RF-IF)

ITEM No.	FUNCTION	REPLACEMENT DATA			REMARKS
		PART No.	OTHER IDENTIFICATION	MILLER PART No.	
L1A B C L4 L5 L6 L7 L10 L11 L12 L13 T1 T4 T5 T6	AM Antenna AM RF AM Oscillator FM Antenna FM RF FM Oscillator RF Choke RF Choke RF Choke RF Choke RF Choke IF (10.7MHz) Quadrature (10.7MHz) IF (262kHz) IF (262kHz)	(1) (1) (1) 9348413 9348414 9348415 7934553 7255738 9346544 9346543 9349015 9349372		4610 4610	

(1) Part of M1.

FILTER CHOKE

ITEM No.	RATINGS			REPLACEMENT DATA			NOTES
	CURRENT (Measured)	DC RES.	INDUCTANCE (0 CURRENT 1000~)	MFGR. PART No.	THORDARSON PART No.	TRIAD PART No.	
L2	370mA	184	35mH	7302543			

SPEAKER

ITEM No.	TYPE	REPLACEMENT DATA		NOTES
		MFGR. PART No.	QUAM PART No.	
	3 1/2" Rd PM 10 Ohms 6" X 9" PM 10 Ohms (Deep Basket)	16000680 9348870		Front-Left,Right-Century Rear-Left,Right-Century,Cutlass,Lemans,Riviera
	4" X 10" PM 10 Ohms 3 1/2" Rd PM 10 Ohms 4" X 10" PM 10 Ohms 4" X 10" PM 10 Ohms 4" X 10" PM 10 Ohms 4" X 10" PM 10 Ohms 6" X 9" PM 10 Ohms (Deep Basket)	7898980 7895000 7896870 1224050 7938401 7933971 9348870		Rear-Left,Right-Century,Lemans Front-Left,Right-Lemans Front-Lemans Rear-Left,Right-Riviera Rear-Left-G-Van,Medium Duty Front-Camaro Rear-Right-Camaro,Firebird
	4" X 10" PM 10 Ohms 4" X 10" PM 10 Ohms 6" X 9" PM 10 Ohms (Deep Basket)	16004172 16002011 9348870		Front-Firebird Front-Monza,Sunbird,Skyhawk,Starfire Rear-Right,Monza,Sunbird,Skyhawk,Starfire
	4" X 10" PM 10 Ohms 6" 9" PM 10 Ohms (Deep Basket)	9349690 9348870		Rear-Right,Monza,Sunbird,Skyhawk,Starfire Nova,Skylark,Omega Front-Nova,Skylark,Omega Rear-Left,Right-Nova,Skylark,Omega
	4" X 10" PM 10 Ohms 3 1/2" Rd PM 10 Ohms 4" X 10" PM 10 Ohms	9349690 16001981 7938401		Rear-Left,Right-Motor Home Front-Left,Right-El Camino Front-Chevy Pick-up

PARTS LIST AND DESCRIPTION (CONTINUED)

(When ordering parts, state Model, Part Number, and Description.)

Replacement parts shown may be superseded by the availability of newly introduced replacements.
Have your local distributor check Sams COUNTER FACTS® for the most up-to-date replacement.

SPEAKER (cont)

ITEM No.	TYPE	REPLACEMENT DATA		NOTES
		MFGR. PART No.	QUAM PART No.	
	4" X 6" PM 10 Ohms 4" X 10" PM 10 Ohms 4" X 10" PM 10 Ohms 6" X 9" PM 10 Ohms (Shallow Basket) 4" X 6" PM 10 Ohms 4" X 10" PM 10 Ohms 6" X 9" PM 10 Ohms (Shallow Basket) 3 1/2" Rd PM 10 Ohms 6" X 9" PM 10 Ohms (Deep Basket)	7895010 7938401 7898980 7285671 1222940 9349690 7285671 9341561 16001991		Front-Left,Right-Chevy Pick-up,Blazer, Suburban,GVan,Corvette, Riviera Rear-Left,Right-Blazer,Suburban Front-Step Van Front-Steel Tilt Cab Front-Left,Right-Steel Tilt Cab Front-Left,Right-Aluminum Tilt Cab, Medium Duty Rear-Right,Aluminum Tilt Cab Front-Left,Right-Motor Home Rear-Left,Right-Corvette

FUSE DEVICES

ITEM No.	DESCRIPTION	REPLACEMENT DATA						
		PART No.		BUSS PART No.		LITTELFUSE PART No.		WORKMAN PART No.
		DEVICE	HOLDER	DEVICE	HOLDER	DEVICE	HOLDER	DEVICE
F1	10A		In Fuse Holder	AGC10		311010		

MISCELLANEOUS

ITEM No.	PART NAME	PART No.	NOTES
CF1	Ceramic Filter	1223695(1)	10.7MHz
CF2	Ceramic Filter	1223695(1)	10.7MHz
I1	Lamp	216	Dial (13.80V @ 235mA)
I2	LED	05410	Stereo Indicator (2.16V @ 32mA)
J1	Socket	9340526	Antenna
J7	Socket	1224150	Bench Hookup
M1	Tuner Coil Assembly	7898352	AM
S1	Switch		Power (Part of Volume Control)
S2	Switch	7898278	AM-FM

(1) When replacing, CF1 and CF2 should be replaced.

CABINETS & CABINET PARTS (When ordering specify model, chassis & color)

ITEM	PART No.	ITEM	PART No.
Escutcheon 80BFM1	7895305	Knob Package, HSP	16001354
Escutcheon 81YFM1	7899291	Knob Package, HSP Wagon	16002931
Dial Glass 80BFM1	7895308	Knob Package, Oldsmobile	16002231
Dial Glass 81YFM1	7898849	Knob Package, Cutlass	16002228
Dial Pointer	7895301	Knob Package, Buick	7895481
Pushbutton 80BFM1	9349753	Knob Package, Lemans, Grand Prix	16003001
Pushbutton 81YFM1	7897816	Knob Package, Firebird	16002984
Knob Package, Chevrolet	7899360	Knob Package, Century	16002987
Knob Package, Chevelle, Monte Carlo	16003003	Knob Package, Pontiac	7899432
Knob Package, Nova, Omega, Skylark	7899393	Knob Package, Trucks	16002928
Knob Package, Camaro	7895414		