



Plasma Display Television Service Manual

Chassis: MST9

**Product Type: PDP32v69
PDP32V69P
PDP3208
PDP3209**

Ver 1.0

**Hisense Electric Co., Ltd.
Apr. 2008**

Contents

CONTENTS	2
SERVICE MANUAL	2
1.PRODUCT SAFETY SERVICING GUIDELINES	3
1.1. Precautions and notices	3
1.2.Product Safety notice	3
2、PRODUCT FUNCTION SPECIFICATIONS	5
2.1 Product Function	5
2.2. specifications	6
3、PDP PANEL SPEC	7
3.1 General description:	7
3.2. Panel block diagram	8
3.3.Power (PSU) description	9
3.4.Power block diagram	9
4. CHASSIS LAYOUT AND OVERALL WIRING DIAGRAMS	10
4.1 Chassis Layout	10
4.2 Overall Wiring Diagrams	11
4.3 Signal processing diagram	12
5. FACTORY/SERVICE OSD MENU	13
5.1 To enter the Factory OSD Menu	13
5.2 Factory OSD Menu	13
6. SOFTWARE UPGRADING	17
6.1 Get ready for upgrading	17
6.2 Upgrading with the ISP_TOOL4.0.9	26
7. TROUBLESHOOTING	31
7.1. No picture	31
7.2. Abnormal display	31
7.3. Enlarged display	31
7.4.No sound	32
7.5. panel problems	32
7.6 Problem solutions:	33
8.STAND INSTALLING	34
9 PDP WALL-MOUNTING BRACKET INSTALLATION GUIDE	35
10. EXPLODE VIEW AND BOM	37
11 SCHEMATIC CIRCUIT DIAGRAM	37

Service Manual

1.Product Safety Servicing Guidelines

1.1. Precautions and notices

BEFORE SERVICING THE CHASSIS, READ THE “SAFETY PRECAUTION” ON THIS MANUAL.

WHEN REPLACEMENT PARTS ARE REQUIRED, BE SURE TO USE REPLACEMENT PARTS SPECIFIED BY THE MANUFACTURER.

WARNING:

Service should not be attempted by anyone unfamiliar with the necessary precaution on this receiver. The following are the necessary precautions to be observed before servicing this chassis.

1. When replacing a chassis in the cabinet, always be certain that all the protective devices are put back in place, such as: non-metallic control knobs, insulating covers, shields, isolation resistor-capacitor network etc.
2. When replacing parts or circuit boards, disconnect the power cord.
3. When replacing a high wattage resistor (oxide metal film resistor) on the circuit board, keep the resistor 10mm (1/2in) away from circuit board.
4. Connection wires must be kept away from components with high voltage or high temperature.
5. If any fuse in this TV receiver is blown, replace it with the FUSE specified in the chassis parts list.

1.2.Product Safety notice

Many electrical and mechanical parts in the chassis have special safety-related characteristics.

These characteristics are often passed unnoticed by a visual inspection.

Replacement parts, which have these special safety characteristic are identified in this manual and its supplement electrical components having such features are shaded on the schematic diagram and the parts list.

Before replacing any of these components, read the parts list in this manual carefully. The use of substitute replacement parts, which do not have the same characteristic as specified in the parts list may create shock, fire or other hazards.

NOTES:

Screen Image retention Do not display a still image (such as on a video game or when hooking up a PC to this PDP) on plasma monitor panel for a long time as it can cause screen image retention. This image retention is also known as “screen burn”. To avoid such image retention, reduce the degree of brightness and contrast of the screen when displaying a still image.

A still image displayed too long may cause permanent damage to the PDP Panel

Watching the PDP TV in 4:3 format or other non full screen formats for a long period of time may leave traces of borders displayed on the left, right and centre of the screen caused by the difference of light emission on the screen. Playing a DVD or a game console may cause similar effect to the screen. Damages caused by the above effect

PDP TV Service Manual

are not covered by the Warranty.

Afterimage on the Screen Displaying still images from Video games and PC for longer than a certain period of time may produce partial afterimages. To prevent this effect, reduce the brightness and contrast when displaying still images for a long time.

Height The PDP can normally operate only under 2000m in height. It might abnormally function at a place over 2000m in height and do not install and operate there.

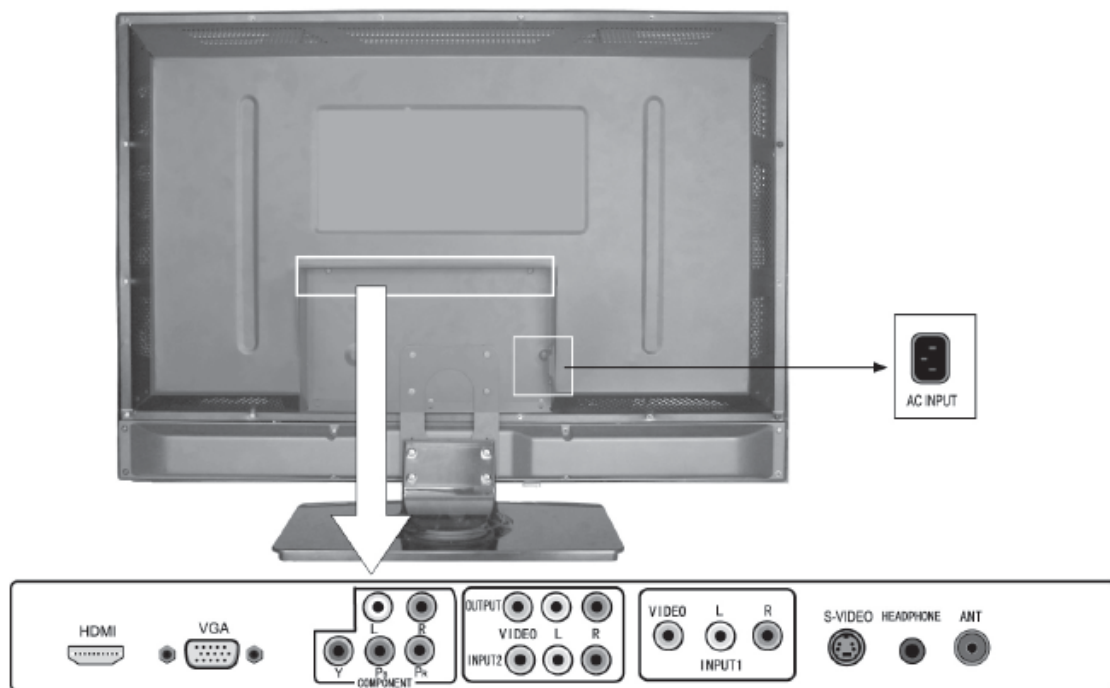
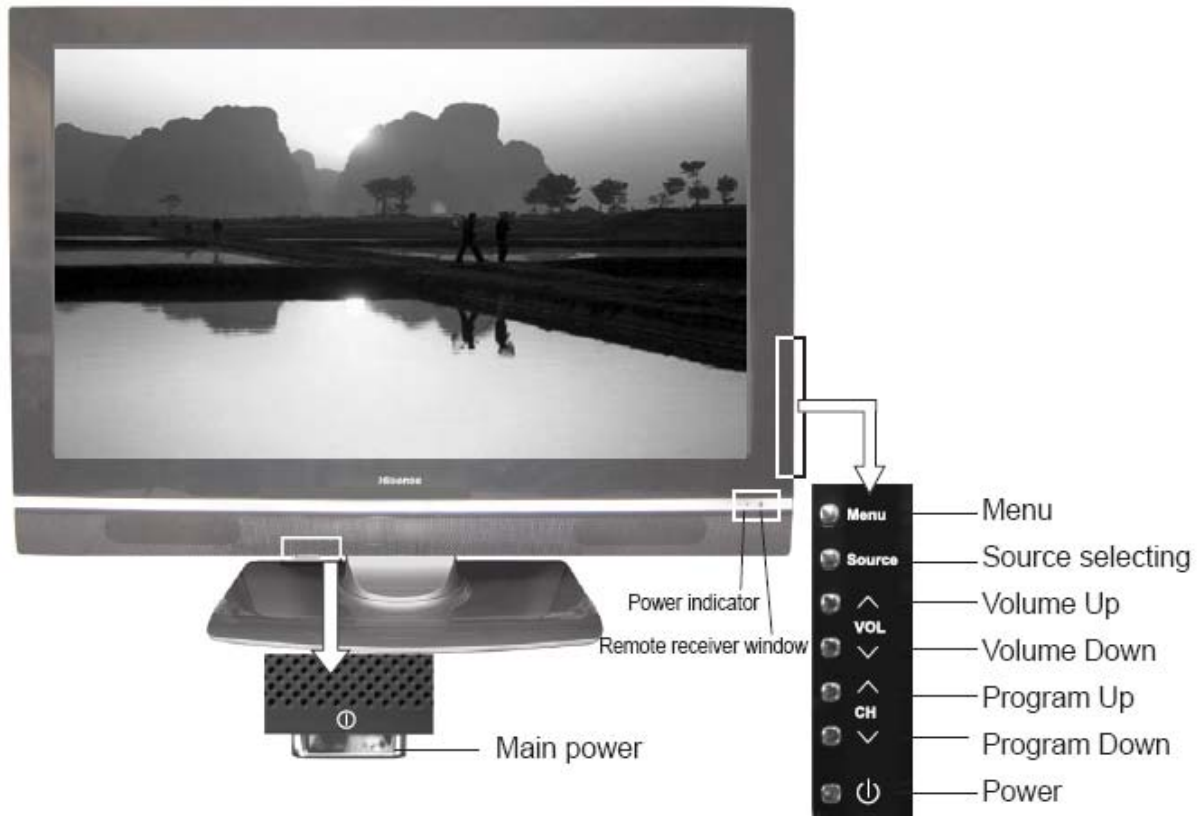
Avoid operating the TV at temperatures below 5 (41°F)

Warranty Warranty does not cover any damage caused by image retention; Burn-in is not covered by the warranty.

Hisense confidential

2、Product Fuction Specifications

2.1 Product Function



PDP TV Service Manual

- High end flat display
- HDMI input
- High definition compatible
- Wide Screen display optimized for cinema viewing
- Multimedia display :TV/PC
- High clear picture
- Audio equalizer
- Color enhancer ,contrast enhancer

2.2. Specifications

PDP panel	Plasma panel 32"	
Native Screen Resolution	852 x 480	
Television system	SECAM/PAL	
Sound system	BG / DK / I/L/L'	
Channel coverage	VHF-L: E2-S8 VHF-H: S9-S37 UHF: S38-E69	
PC mode (DB15)	60Hz	640 x 480, 800 x 600, 1024 x 768
YPBPR mode	50Hz	576 i/p, 720p, 1080i
	60Hz	480i /P, 720p, 1080i
HDMI mode	RGB	640 x 480, 800 x 600, 1024 x 768
	YPBPR 50Hz	576p, 720p, 1080i
	YPBPR 60Hz	480p; 720p, 1080i
Static contrast ratio	50 : 1	
Brightness	500 cd/m ²	
Viewing angle	140° (H/V)	
Power source	AC 100V-240V, 50/60Hz	
Power consumption	190W	
Audio output	2 x 5 watts	
Audio filter	Equalizer 5 x bands	
Connection interface	RF Input:	RF Antenna x 1
	Video Input:	YUV x 1 ,S-Video x 1,AV x 2
	Graphic Input:	PC analog (DB15) x 1,HDMI x 1 (HDCP)
	Audio Input:	YUV/ PC analog x 1 ,S-Video /AV1 x 1, AV2 x 1
	Audio Output:	audio output x 1 headphone x 1 (Jack 3,5mm)
	Video Output:	video output x 1
	Other:	
Dimensions	838mmX647mmX240mm (LXWXH) (including stand)	

Hisense confidential

3、PDP panel spec

3.1 General description:

The PDP32F1##### requires only 8/10bits of digital video signals for each RGB color.

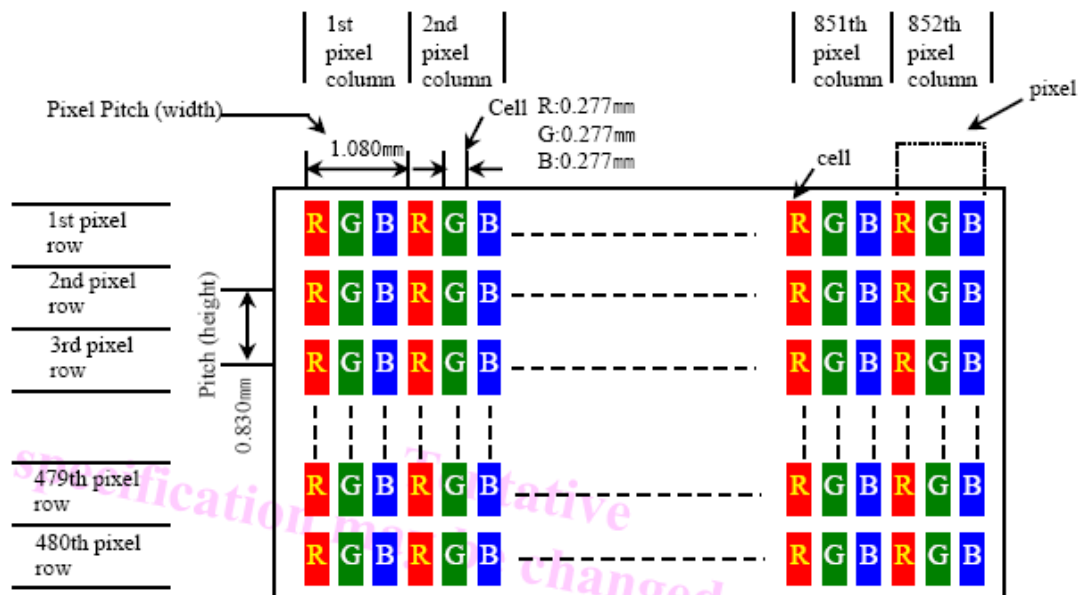
In addition to the video signals, six different DC voltages are required to operate the display.

□ GENERAL SPECIFICATIONS

- ✓ Model Name : PDP32F1##### (32F1##### Model)
- ✓ Number of Pixels : 852(H) × 480(V) (1pixel=3 RGB cells)
- ✓ Pixel Pitch : 831 μ m (H) × 830 μ m (V)
- ✓ Cell Pitch : 277 μ m (H) × 830 μ m (V) (Green Cell basis)
- ✓ Display Area : 708.01(H) × 398.4(V) \pm 0.5mm
- ✓ Outline Dimension : 790(H) × 466.5(V) × 59.1(D) \pm 1mm
- ✓ Pixel Type : RGB Closed type (well)
- ✓ Number of Gradations : (R)1024 × (G)1024 × (B)1024
- ✓ Weight : 8.05 Kg \pm 0.5 Kg (Net 1EA)
123.5Kg \pm 5 Kg (12EA/1BOX)
- ✓ Aspect Ratio : 16:9
- ✓ Practical Brightness : Typical 550cd/m² (25% White Window)
- ✓ Contrast Ratio : Average 50:1 (In a bright room with 100Lux at center)
- ✓ Power Consumption : Typical 160 W (Full White) Max.200W (With PSU 250W)
- ✓ Expected Life-time : more than 60,000 Hours of continuous operation

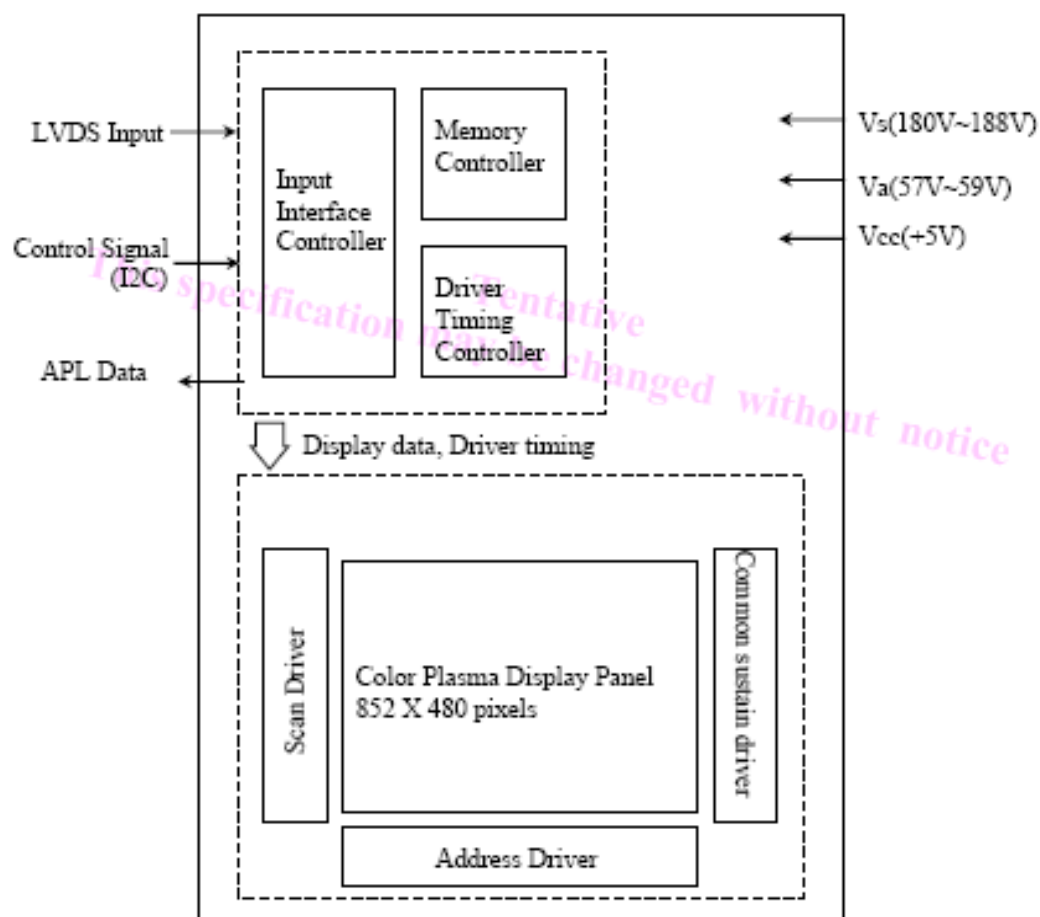
☞ Life-time is defined as the time when the brightness becomes half of its initial value.

✓ Display Dot Diagram



3.2. Panel block diagram

□ BLOCK DIAGRAM

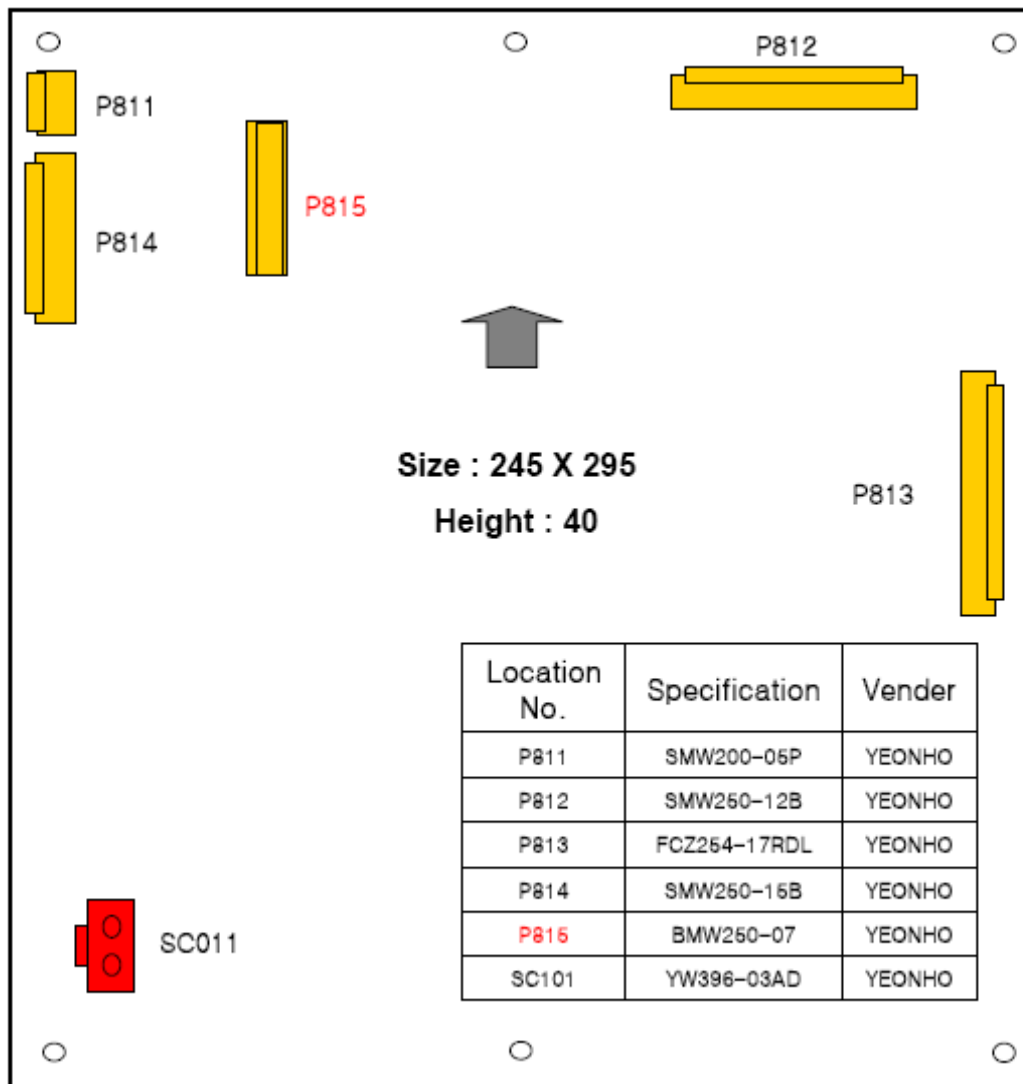


Applied Voltage level is specified at the time when Full-White pattern is displayed on the panel.

3.3.Power (PSU) description

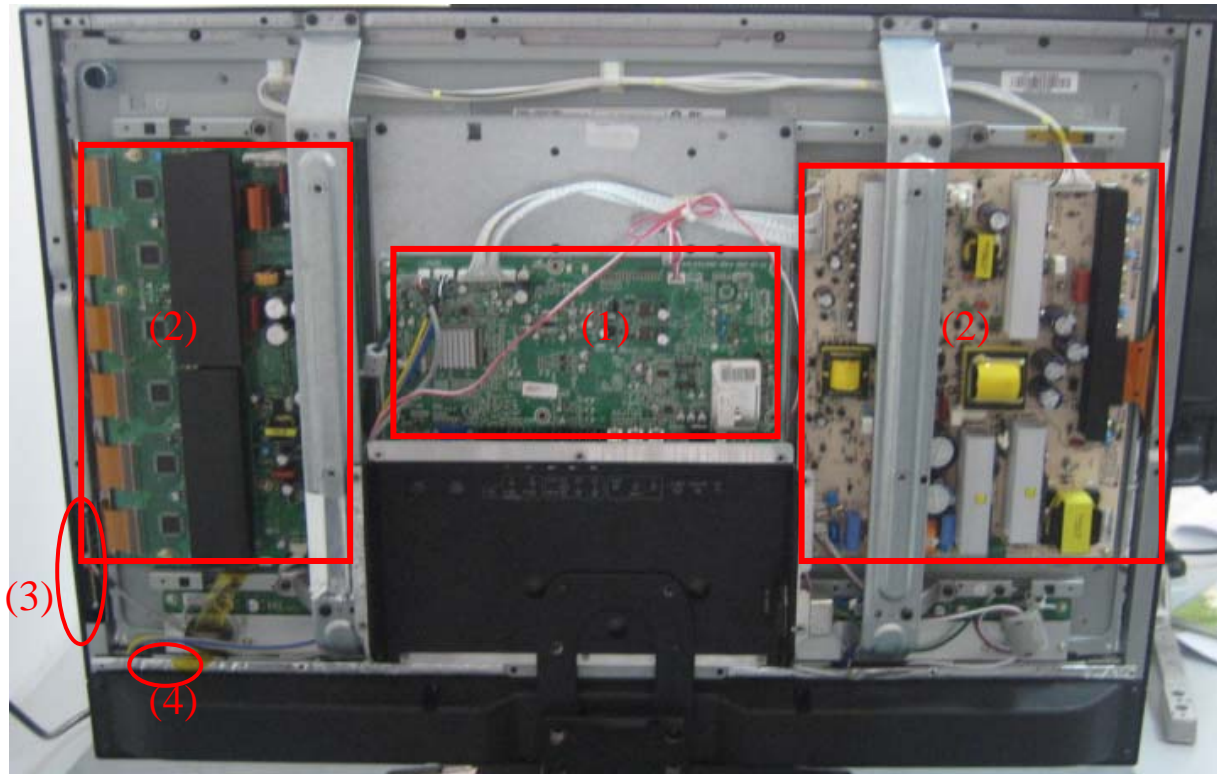
Standard Voltage Range	AC 100V ~ 240V
Available Voltage Range	AC 90V ~ 265V
Frequency Range	50Hz ~ 60Hz(± 5Hz)

3.4.Power block diagram



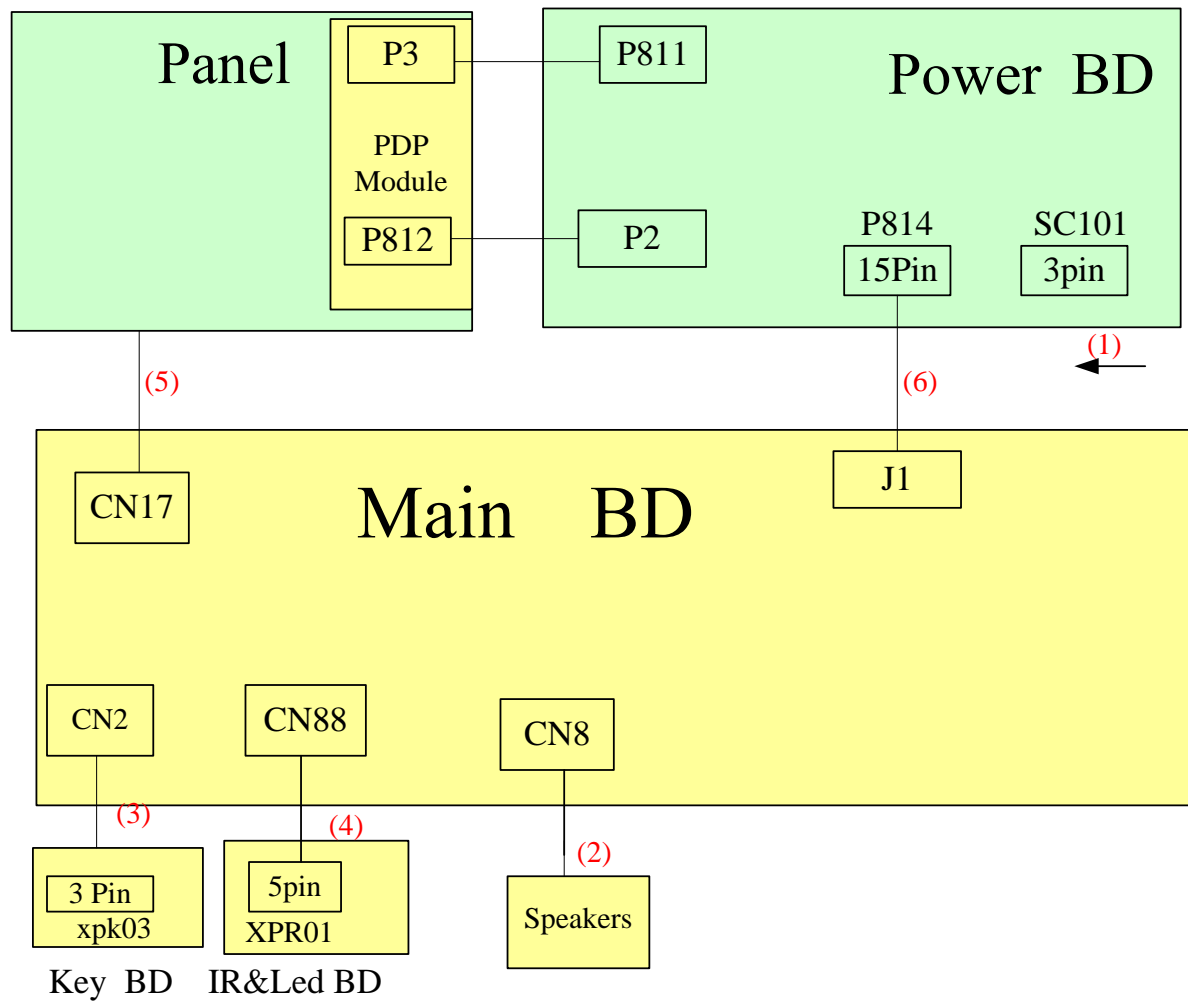
4. Chassis Layout and Overall Wiring Diagrams

4.1 Chassis Layout



No	Description	Part No	Type/Model	PCB
(1)	Main Board	117040	RSAG2. 908. 1099-3	RSAG7. 820. 1234
(2)	PDP module	1047782	PDP32F1	Outsourcing
(3)	Keypad Board	113649	RSAG2. 908. 1118	RSAG7. 820. 1141
(4)	IR&Led Board	115365	RSAG2. 908. 1244	RSAG7. 820. 1349

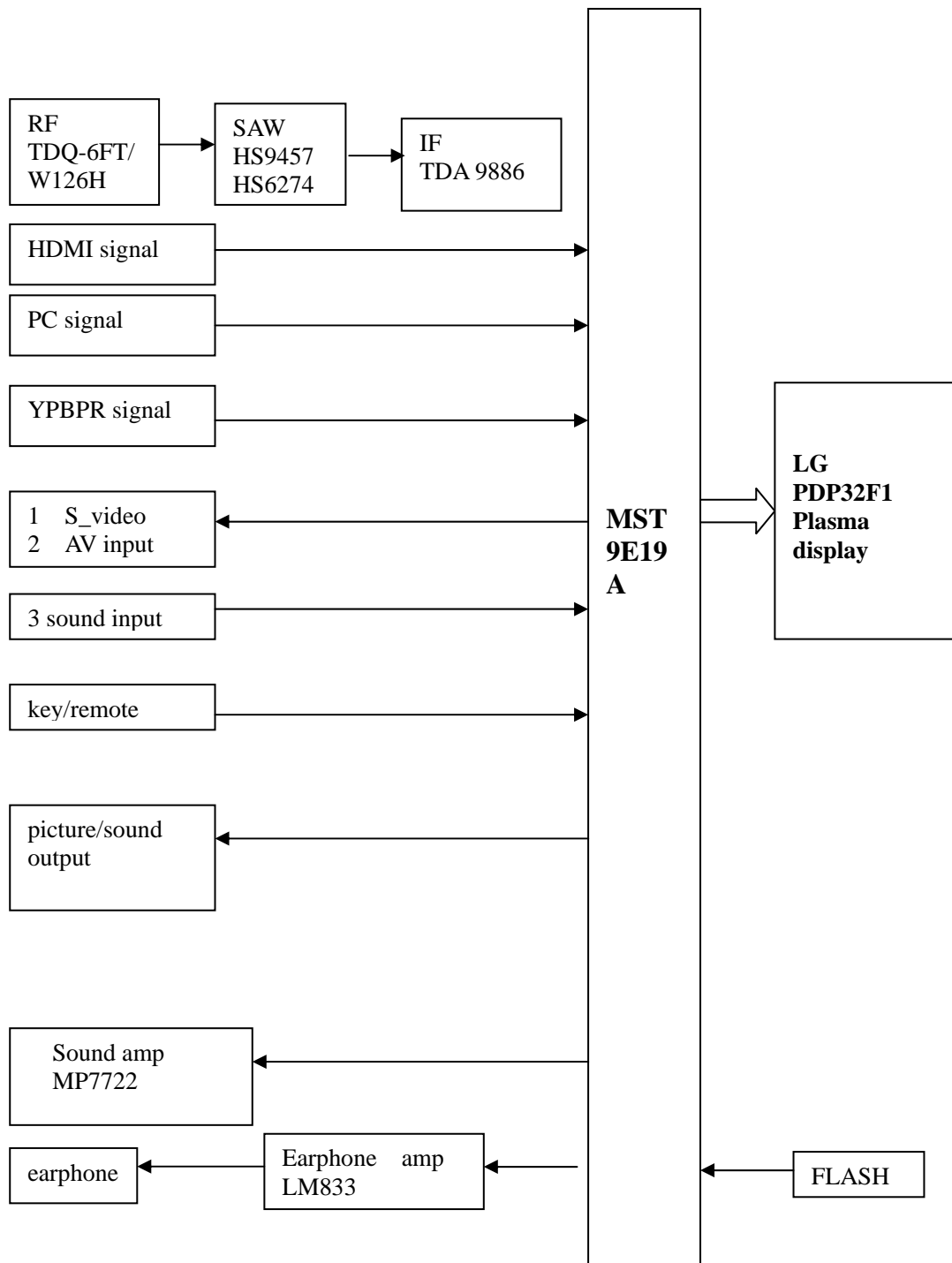
4.2 Overall Wiring Diagrams



No	DESCRIPTION	SPECIFICATION	NOTE
1	Main Power	VH-3Y-600\ROH	Power Inlet-->Power BD SC101
2	Audio output (L/R)	TJC3H-4Y-650-900\ROH	Main BD CN8<-->Speaker L/R
3	Buttons	TJC10T-3Y-700-P\ROH	Main BD CN2<--> Keypad BD XPK03
4	LED & IR	TJC10T-5Y-600\ROH	Main BD CN88<--> LED&IR BD XPR01
5	LVDS signal	FF-HX19-11\ROH	Main BD CN17<-->Panel
6	Power and communication between Main BD and power BD	TJC3T-15Y-300\ROH	Power BD P814<-->Main BD J1

4.3 Signal processing diagram

The signal board is composed by the main board .The main chip for video decoder is MST9E19A produced by MSTAR co., ltd.



5. Factory/Service OSD Menu

5.1 To enter the Factory OSD Menu

a. With factory RC (remote control)

1. Press “M” button and enter factory mode.
2. Press “Menu” button and enter factory OSD menu.
3. Press “CH+”/“CH-” button select the function menu, press “VOL+”/“VOL-” enter the selected function menu. Press “VOL+”/“VOL-” button adjust values in the menu.
4. Press “M” button exit factory mode in the factory OSD menu.

When TV outgoing factory, user can not enter factory OSD menu with Factory Remote

b. With user's RC

1. Power TV On
2. Press Menu button and call up User OSD Menu
3. Select Sound-> Balance
4. When Balance value is “0”, Enter 0->5->3 ->2 in sequence.
Note: If necessary, re-do number keys.
5. Factory OSD appears.
6. Press the standby button then AC turn off and restart the TV, which can exit factory OSD menu.

5.2 Factory OSD Menu

The Factory OSD Menu comprises Factory Menu and Design Menu .

5.2.1、 Factory Menu

Factory Menu

White Balance
Auto Calibration
LOGO
OSD Language
Country
Option
Factory Init
Test Pattern
Version:

White Balance

R DRV	13
G DRV	7
B DRV	16
R CUT	116
G CUT	120
B CUT	118
BRIGHT_H	80
CONTRAST_H	80
BRIGHT_L	40
CONTRAST_L	40

PDP TV Service Manual

Auto Calibration

Auto Color

Color Temp.	Standard
RED COLOR	116
GREEN COLOR	120
BLUE COLOR	118

LOGO

NULL

HISENSE

WELCOME

Option

SOURCE	TV
BRIGHT 0	10
BRIGHT 50	110
BRIGHT 100	132
CONTRAST 0	60
CONTRAST 50	125
CONTRAST 100	170
TOFAC	M
HDMI Cable	Standard
PIXSHIFTNUMBER	1
PIXSHIFTTIME	30

Factory Init

QingDao

HuangDao

Guiyang

Hungary

France

Austria

CLEAR PROTECTLY

CLEAR UNPROTECTLY

Hisense confidential

Test Pattern

BLUE

Version

Version:

Panel Type:

LG PDP32F1 (852*480)

FLASH :

EN25F80

5.2.2、 Design Menu

Design Menu

Picture Mode

Sound Mode

Sound Settings

Power Save

PIP Option

EMI

MOVESHARPNESS

LipSync

PDP TV Service Manual

Picture Mode

Standard	Brightness	50
	Contrast	50
	Colour	45
Bright	Brightness	60
	Contrast	60
	Colour	55
Soft	Brightness	45
	Contrast	45
	Colour	45

Sound Settings

VOLUME 0	128
VOLUME 1	79
VOLUME 20	28
VOLUME 40	24
VOLUME 100	10
TVPRE SCALER	2
VOLUME SCALER	0

Sound Mode

Standard	120Hz	11
	500Hz	11
	1.5KHz	12
	5KHz	14
	10KHz	14
Music	120Hz	13
	500Hz	11
	1.5KHz	12
	5KHz	14
	10KHz	20
Speech	120Hz	6
	500Hz	9
	1.5KHz	14
	5KHz	14
	10KHz	14

NOTE: We advise service hadn't better amend factory data, because it is better settings data.

Please do not tell user the purpose password.

Hisense confidential

6. Software Upgrading

The software is upgraded by a burning tool- ISP_TOOL4.0.9, which can burn the program file *.bin to the main board of the unit

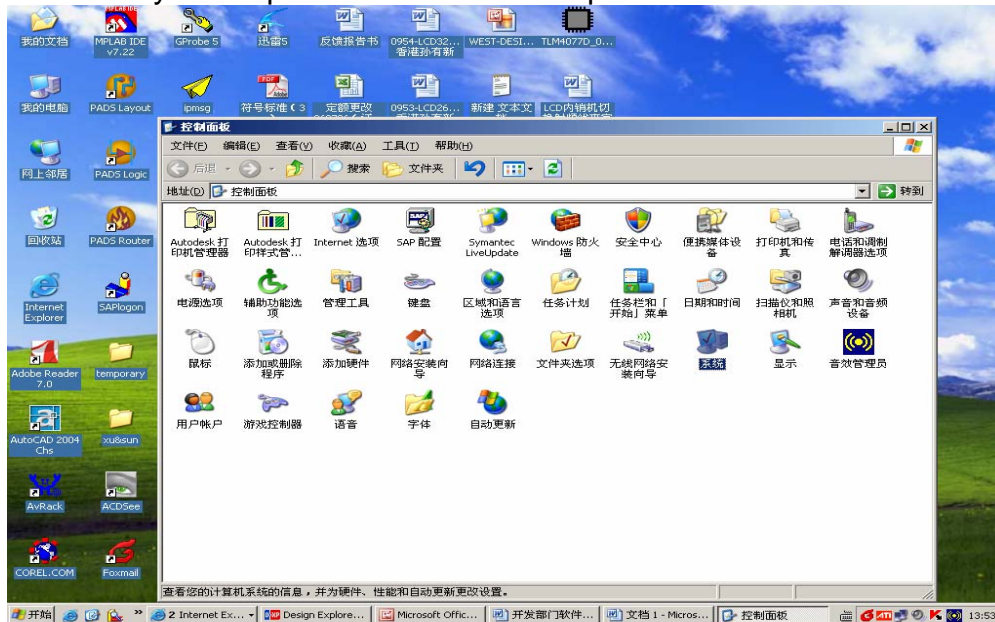
6.1 Get ready for upgrading

6.1.1 Install the ISP_TOOL4.0.9-----only for the first time update.

1、 Port Setting:

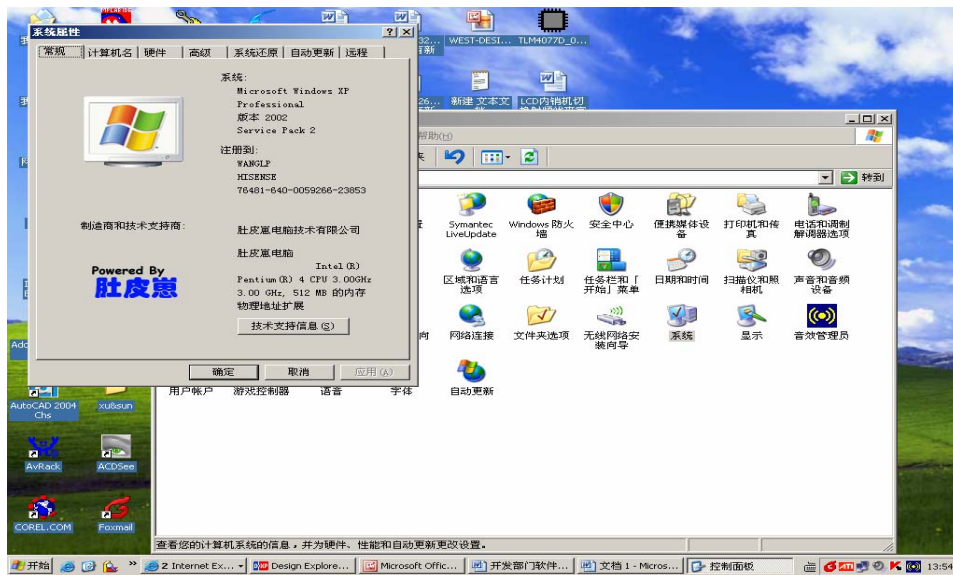


Choose “system” option from the “control panel”



Click the “system” icon as the following

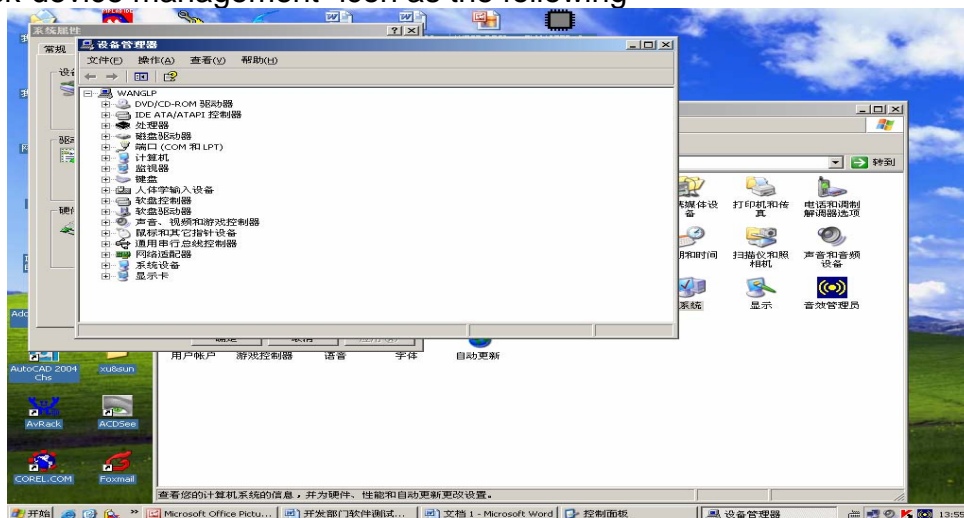
PDP TV Service Manual



Choose the “hardware” option from the dialog window

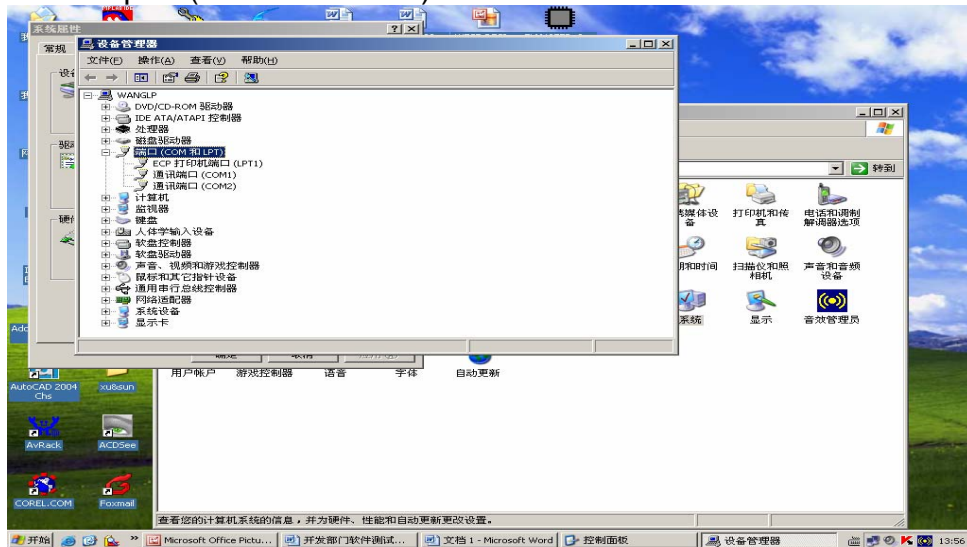


Click“device management” icon as the following

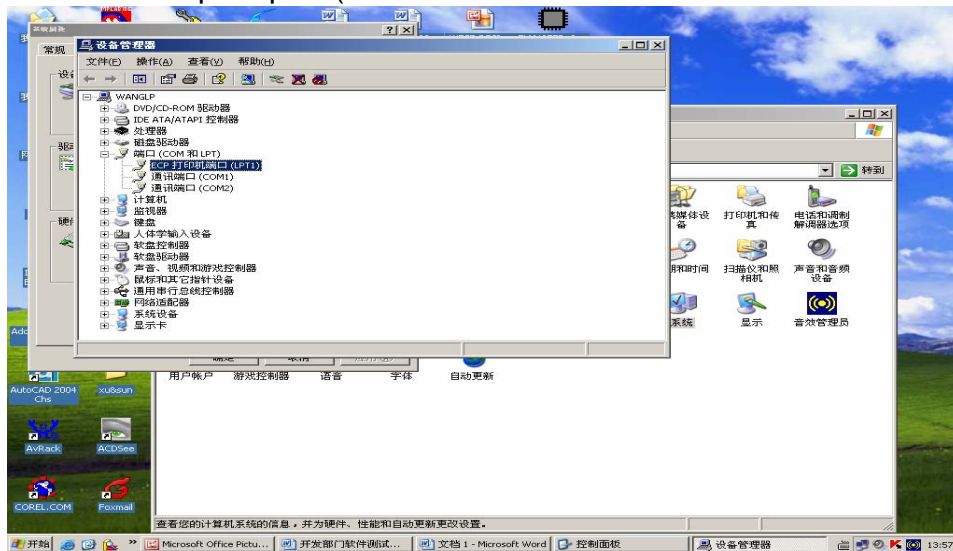


Hisense confidential

Choose the port (COM and LPT1)

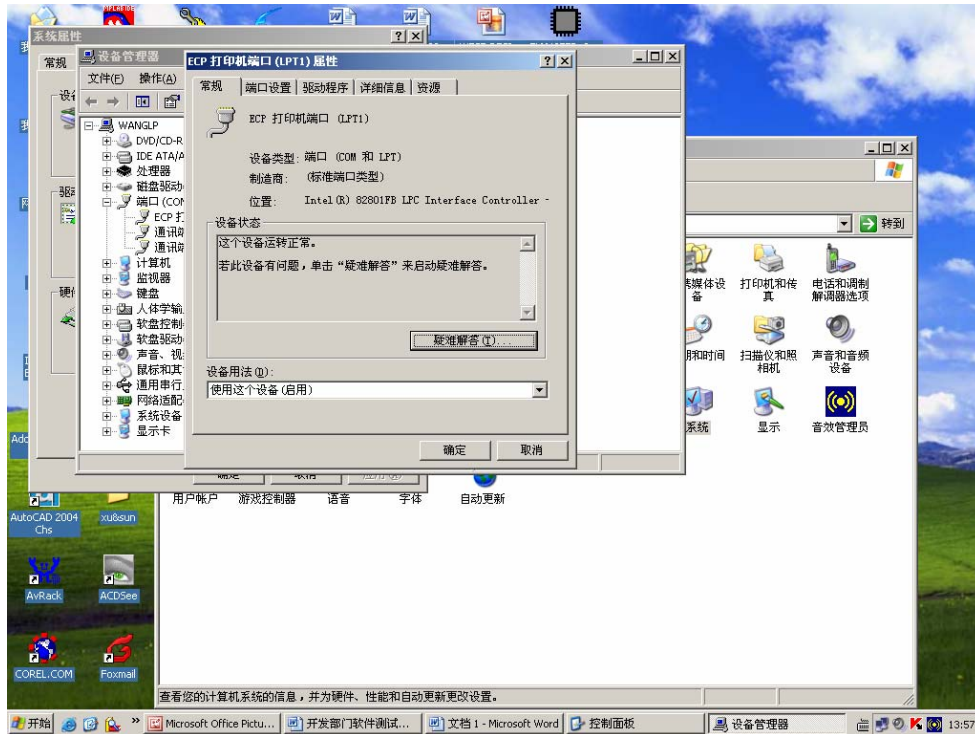


Choose the ECP print port (LPT1)

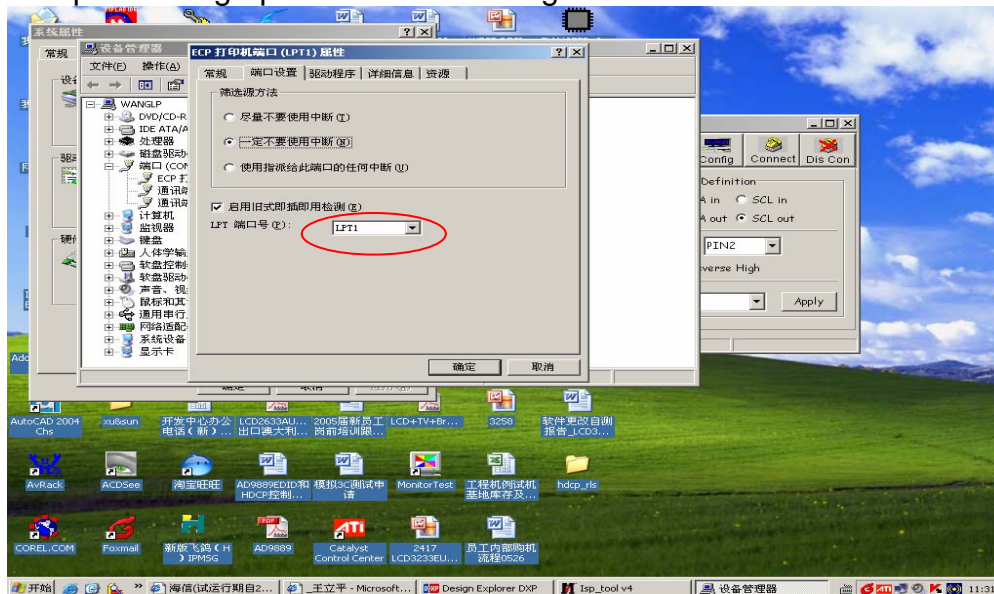


Click the port of print (LPT1) as the following

PDP TV Service Manual



Choose "port setting" option as the following

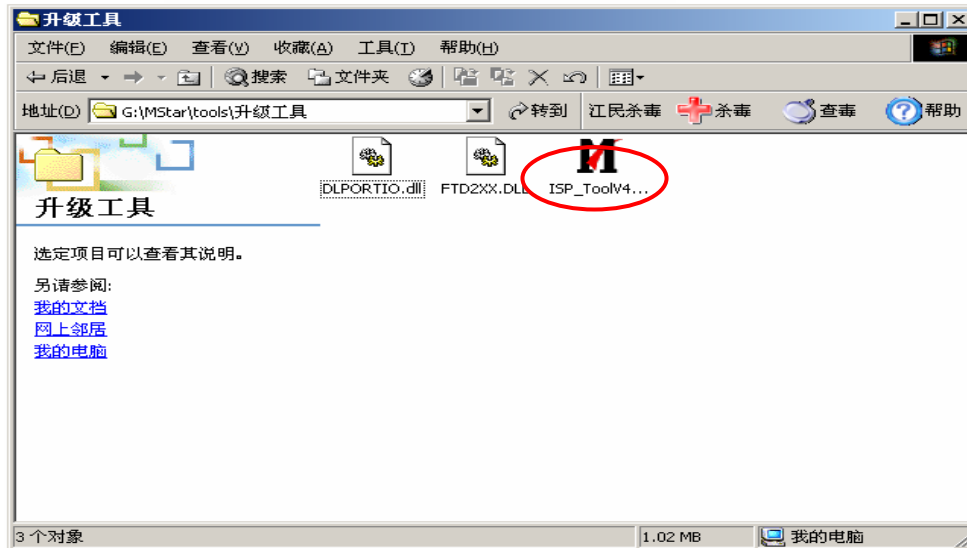


2、 Find the folder where the ISP_TOOL4.0.9 lies in.

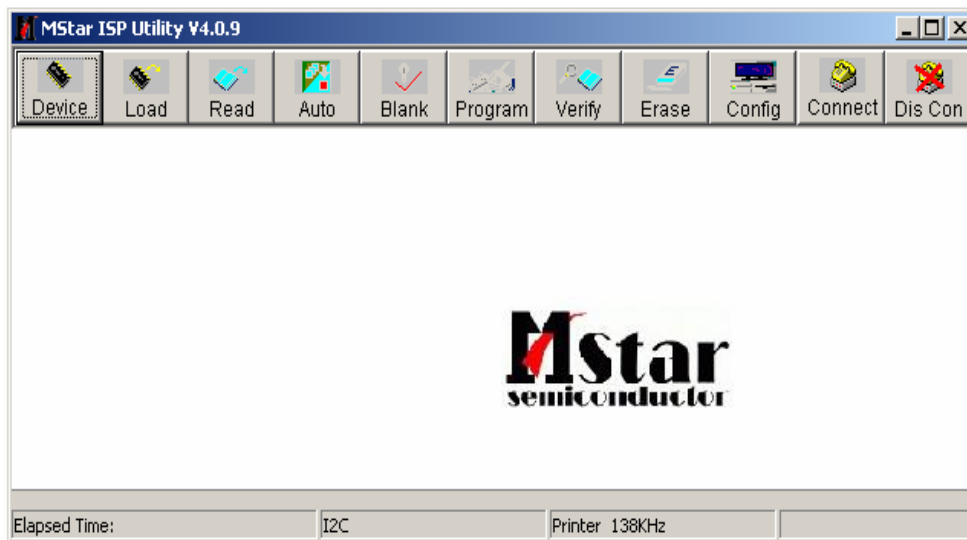
Hisense confidential

PDP TV Service Manual

There are three folders/files in this folder together.
DLPORTIO.dll and FTD2XX.DLL must be in the same folder



Double click the ISP_TOOL4.0.9 icon, and then a dialog window will show as below.



Click the **Config** button. And then a dialog window will show as below.

“Port Type” setting is LPT1

“Base Addr ” setting is 0x378

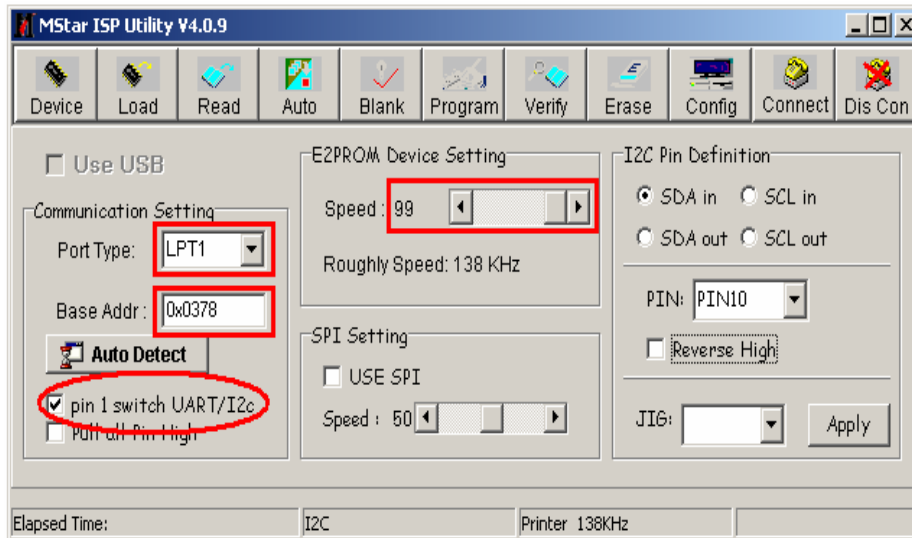
Draw ☒ on the front of “pin 1 switch UART/I2c”

Speed setting is 99

As following

Hisense confidential

PDP TV Service Manual

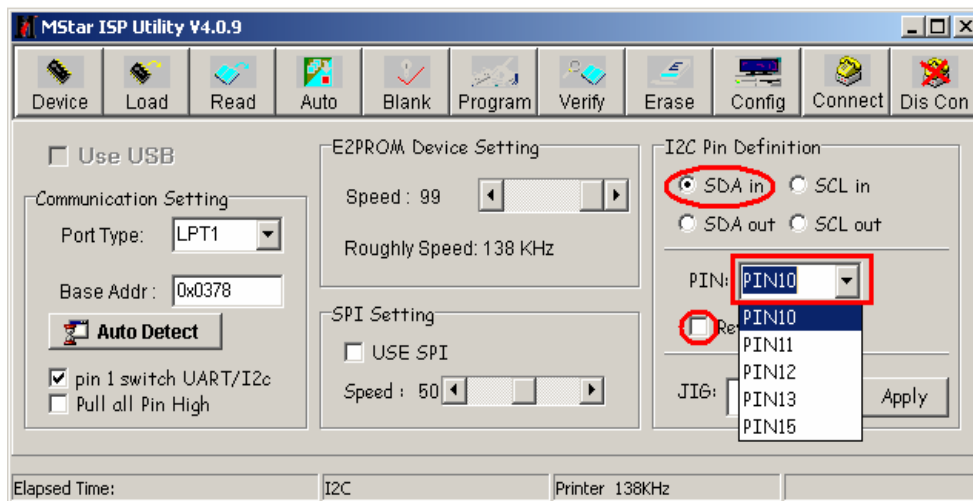


Choose "SDA in" and setting "PIN" is "PIN10".

Notes:

Do not draw ☒ on the front of "Reverse High".

As following



Choose "SCL in" and setting "PIN" is "PIN11".

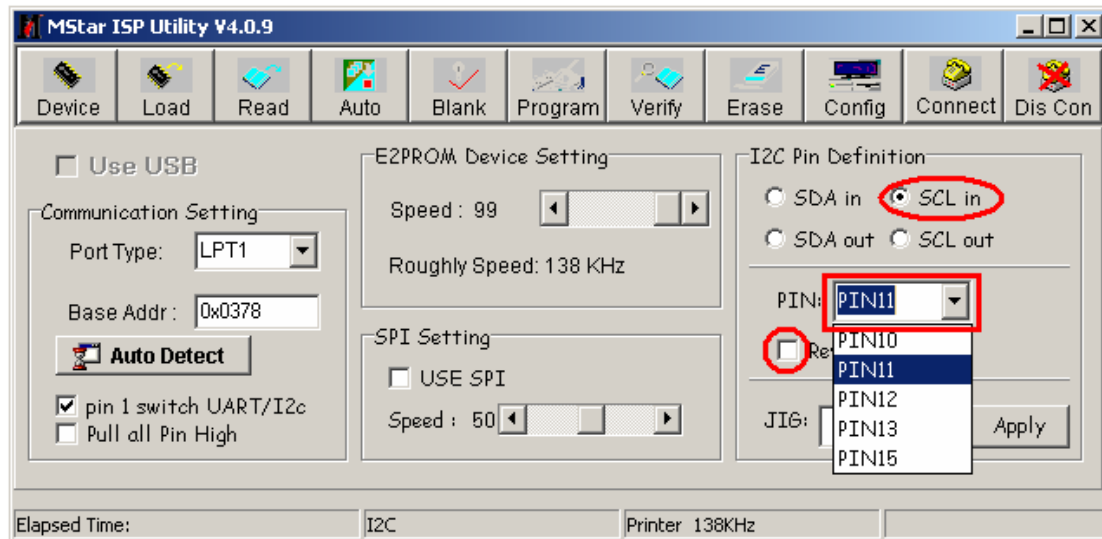
Notes:

Do not draw ☒ on the front of "Reverse High".

As following

Hisense confidential

PDP TV Service Manual

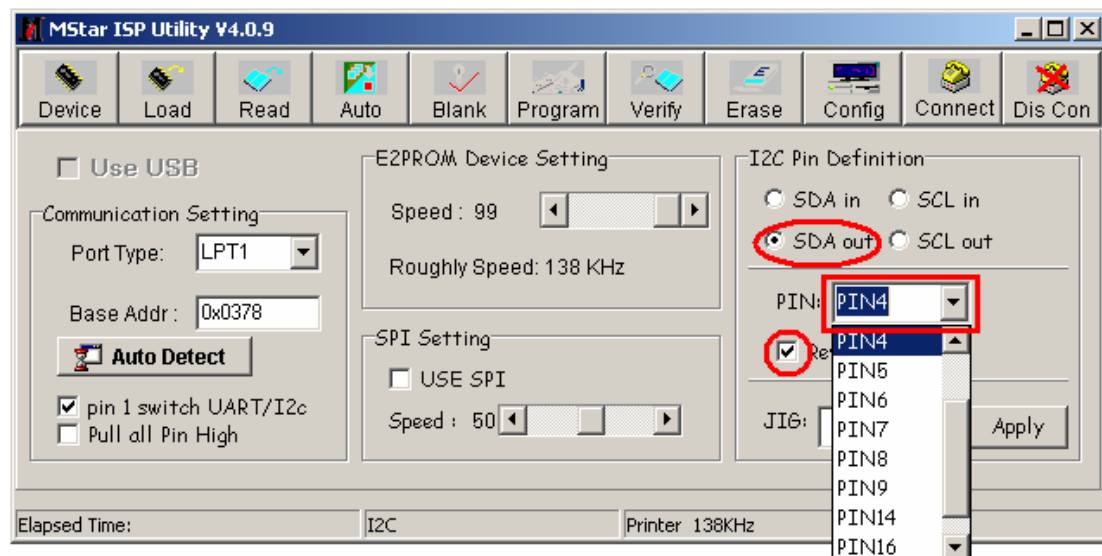


Choose "SDA out" and setting "PIN" is "PIN4"

Notes:

Draw ☒ on the front of "Reverse High".

As following.



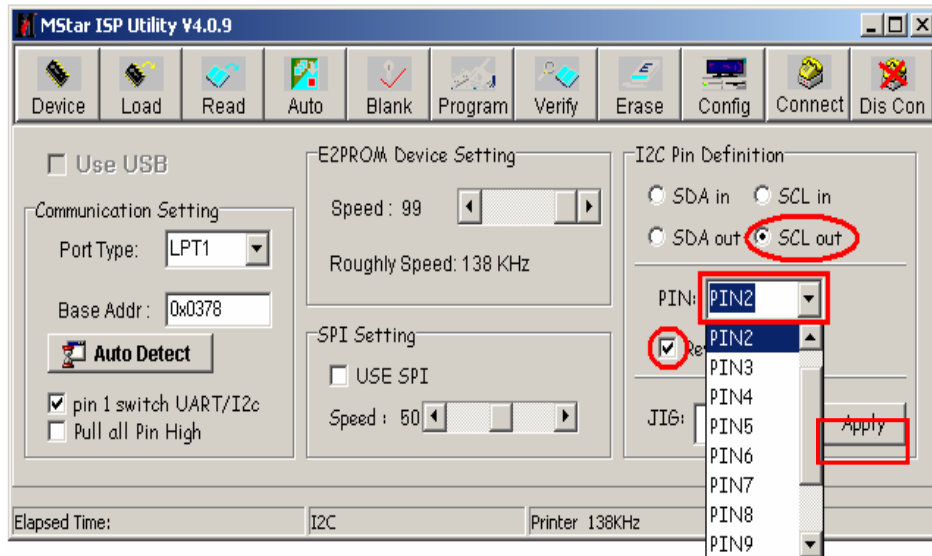
Choose "SCL out" and setting "PIN" is "PIN2"

Notes:

Draw ☒ on the front of "Reverse High"

As following

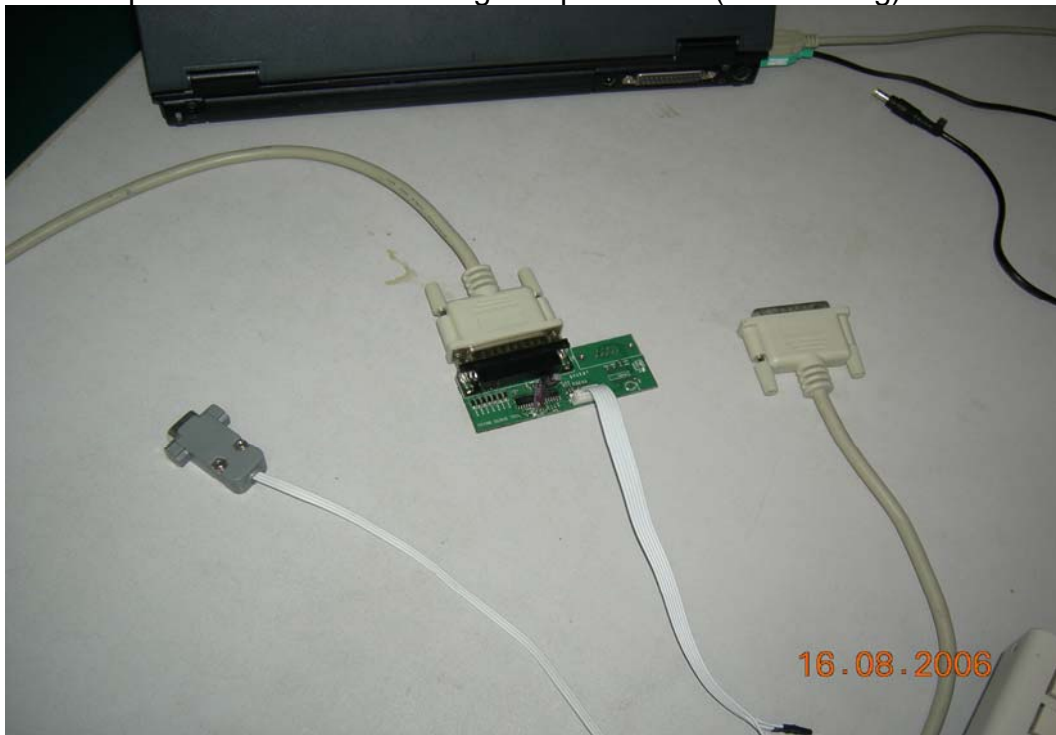
Hisense confidential



After having finished all above, clicking the “Apply” button to complete the configuration.

6.1.2 Hardware connecting

You can update the software through a special tool (as following)



Connect the Debug board to the TV use VGA interface, the other parallel port to the computer, just as the following.

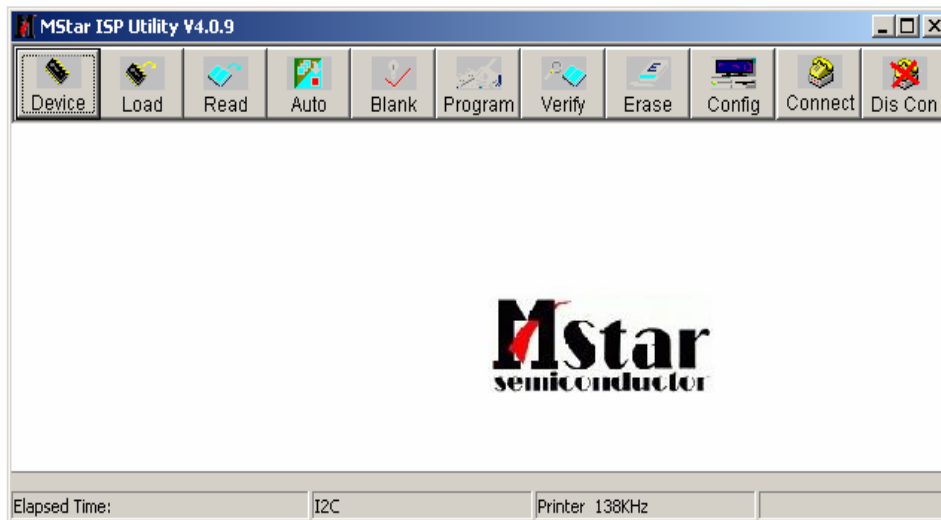
PDP TV Service Manual



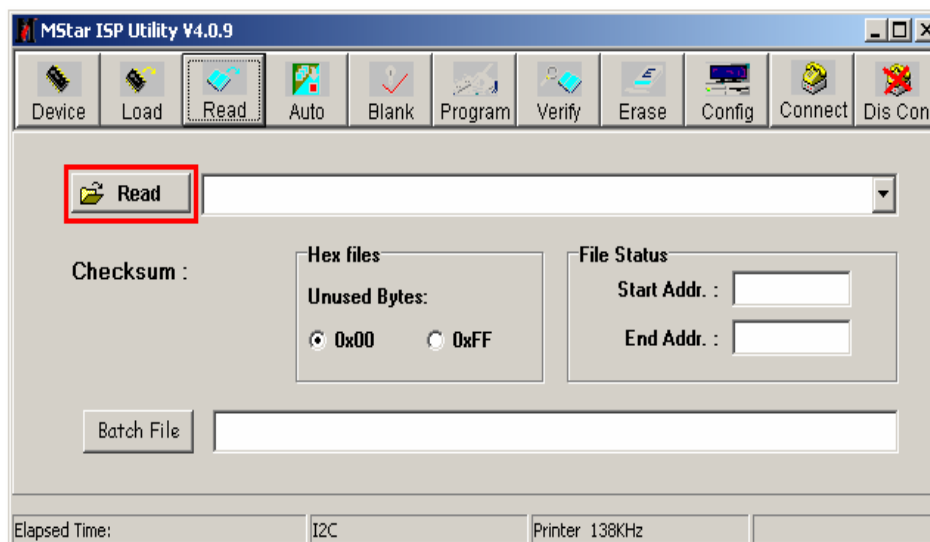
Hisense confidential

6.2 Upgrading with the ISP_TOOL4.0.9

6.2.1 Double click the ISP_TOOL4.0.9 icon and a dialog window will show as following.

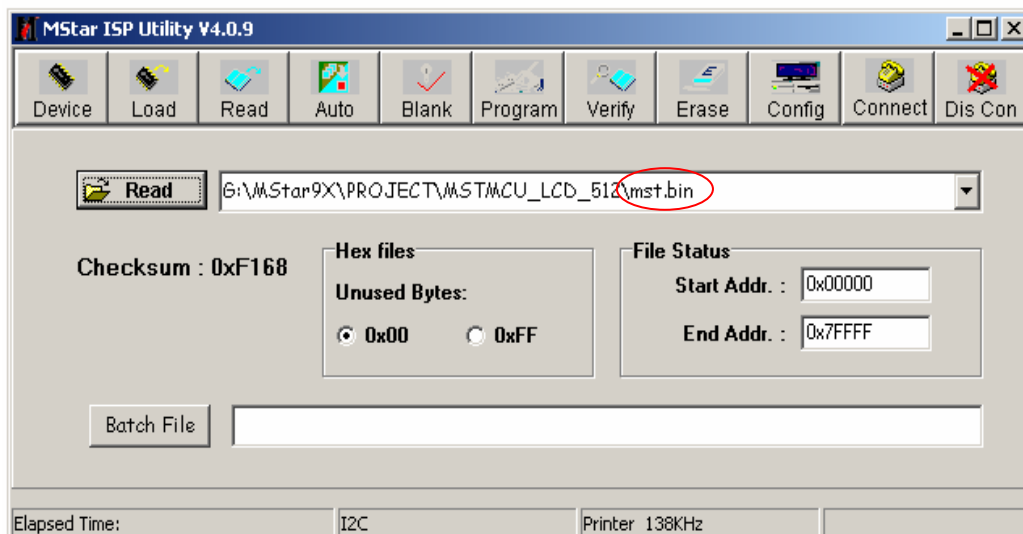
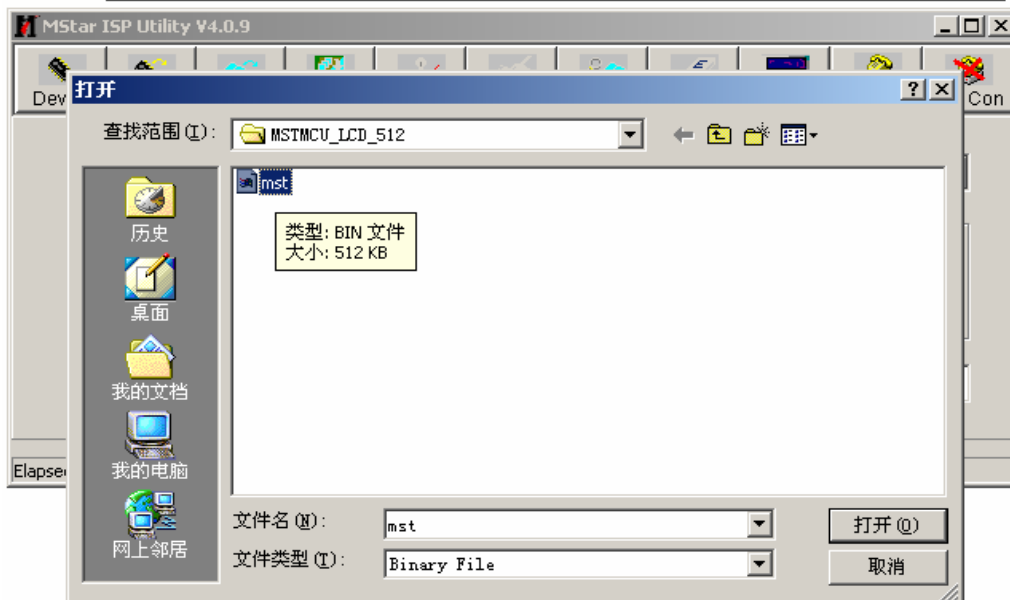
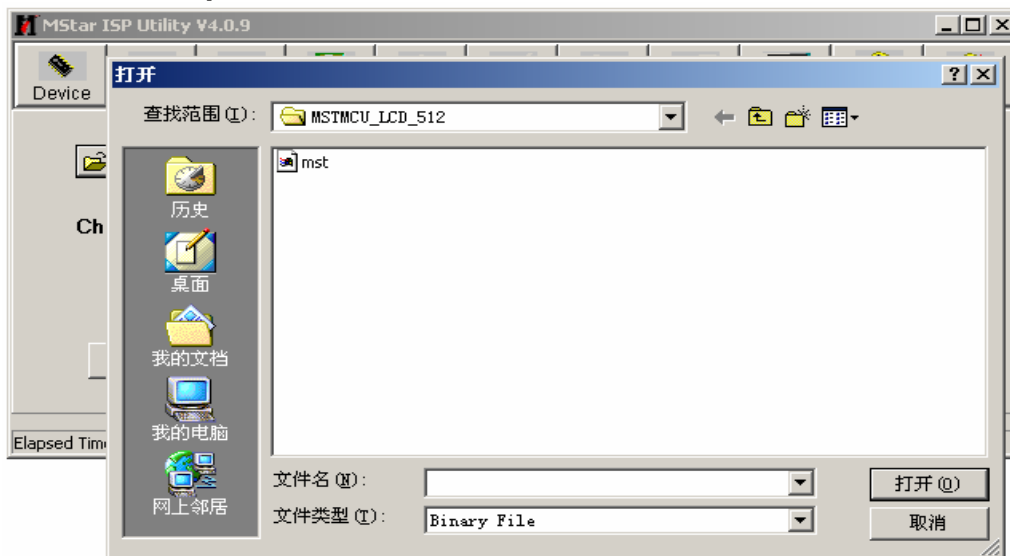


Click the "Read" button.



PDP TV Service Manual

Choose the update file from the folder.

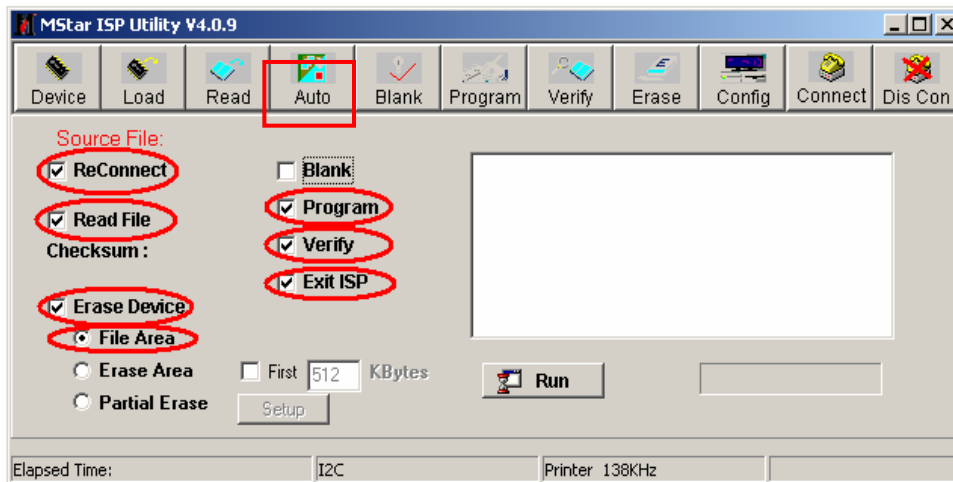


Hisense confidential

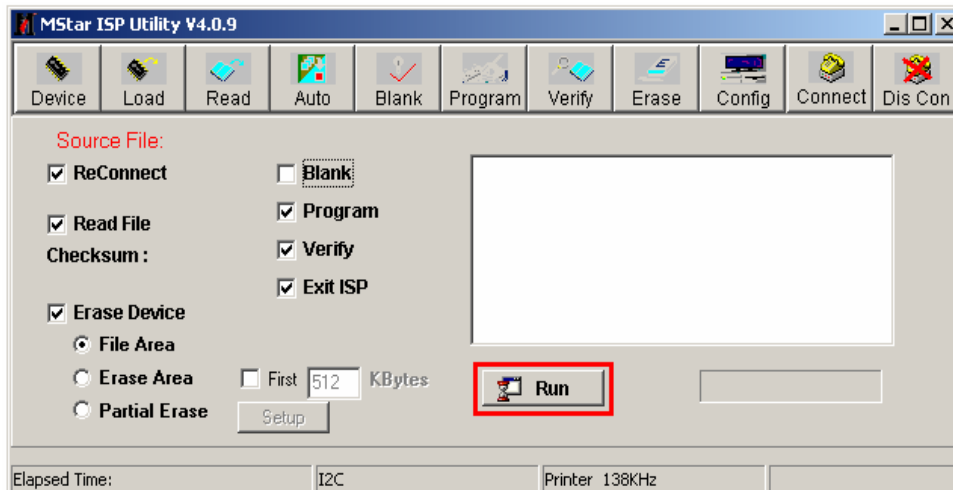
PDP TV Service Manual

The update file has been chosen successfully.

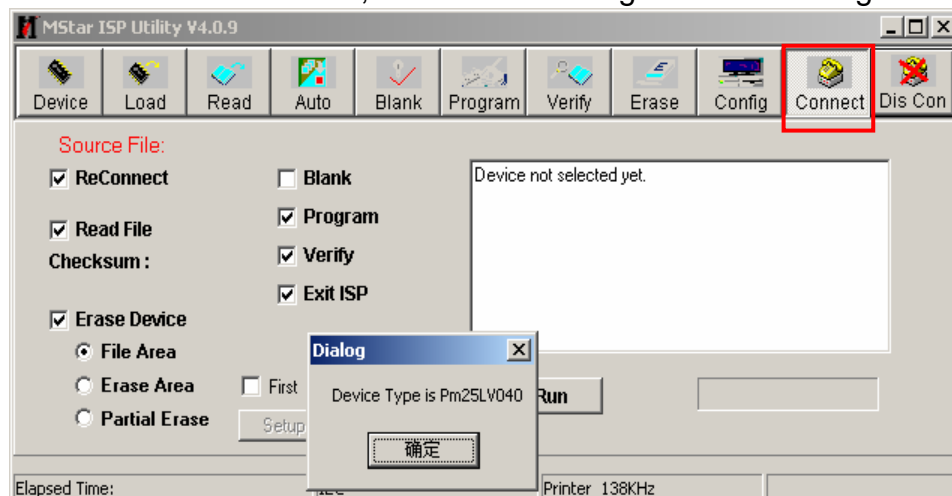
Click the “Auto” button and choose parameters as following.



Click the “Run” button

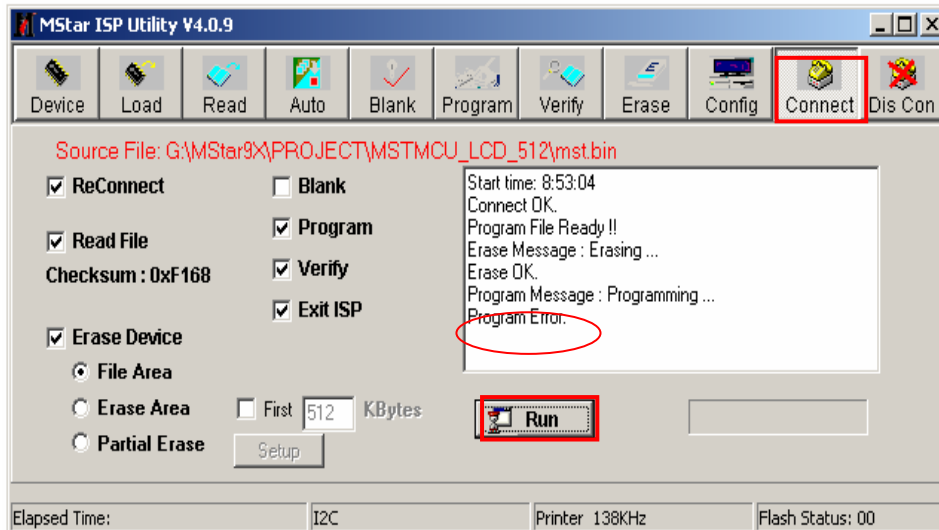


Click the “connect” button, then show a dialog box as following.

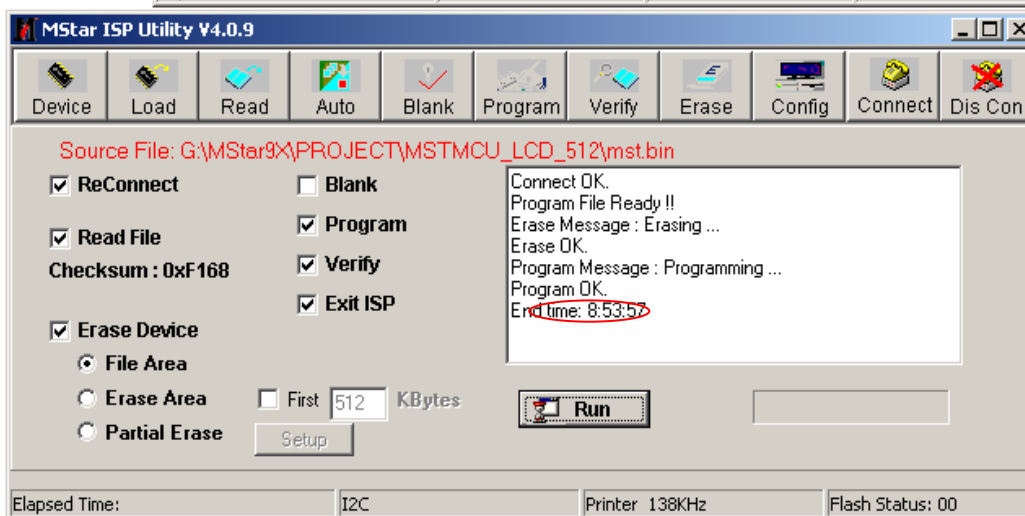
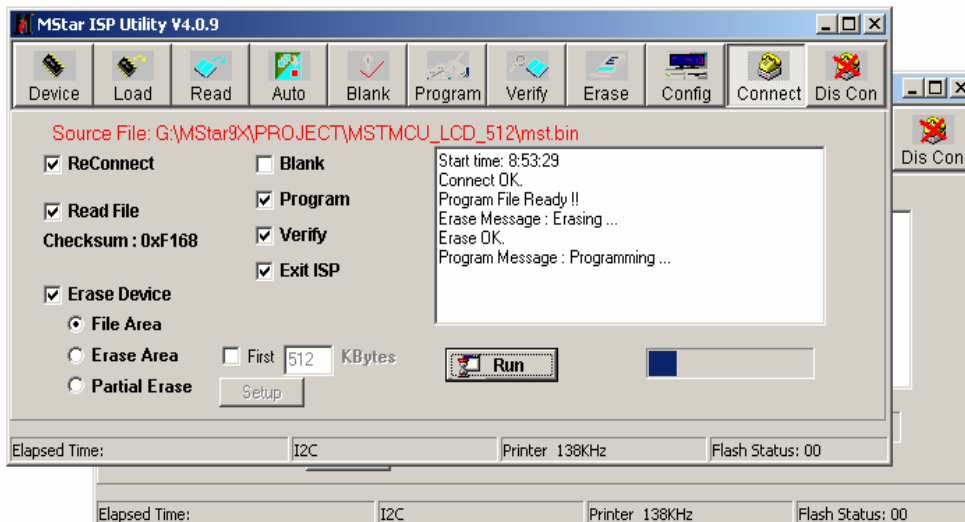


Hisense confidential

PDP TV Service Manual



If show above then click the“Run”button again and again, till show the following dialog window.



The above appears on the screen-the word “program ok”shows in the information

Hisense confidential

displaying window, indicating upgrading is over.

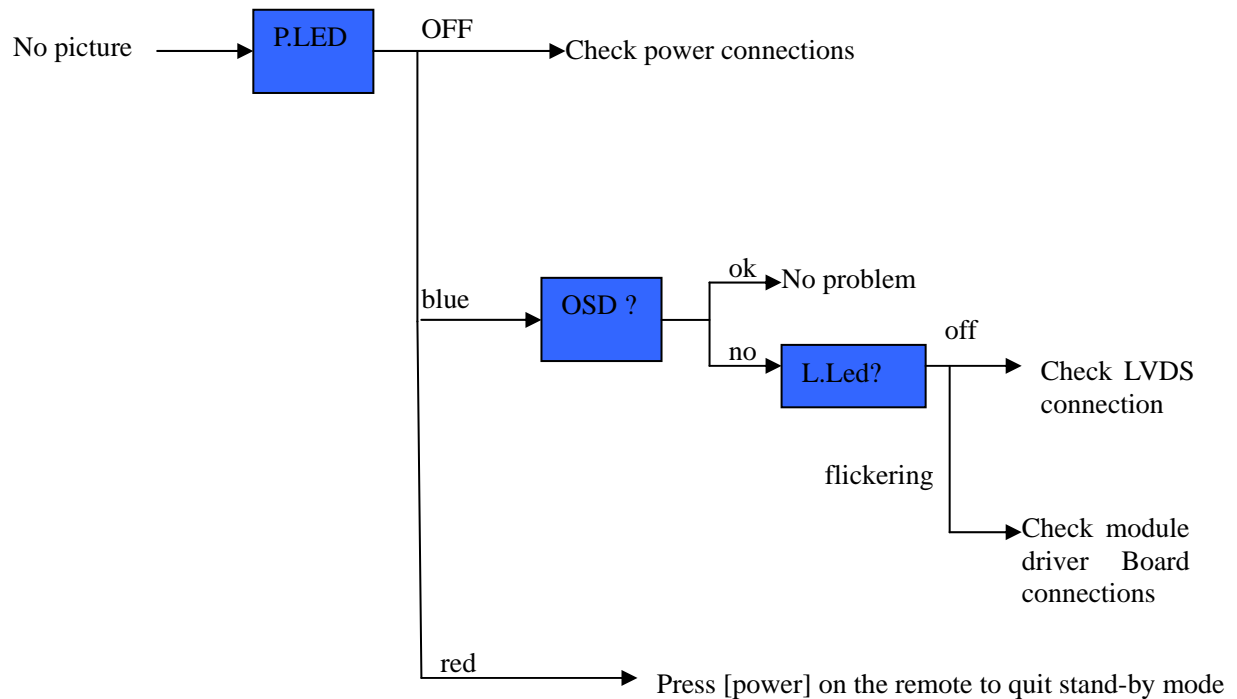
6.2.2 After the update is over. Must Confirm the software Version in the Version Menu.

If the update is successful, enter Factory Init Menu and select "Clear Unprotectly"

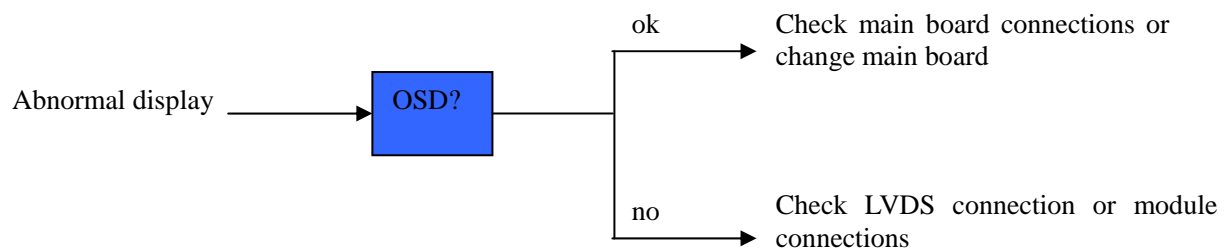
- a. Press VOL+ button to clear the EEPROM data.
- b. When the "Clear Unprotectly " button becomes white, turn off the power.
- c. Restart the TV.

7. Troubleshooting

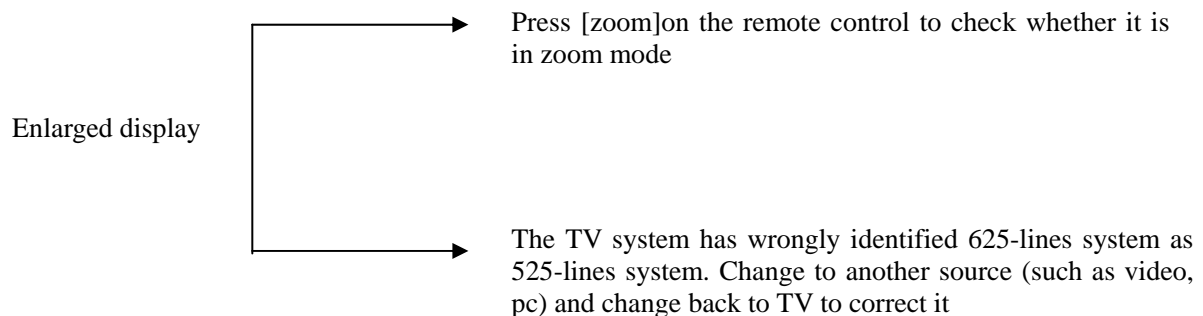
7.1. No picture



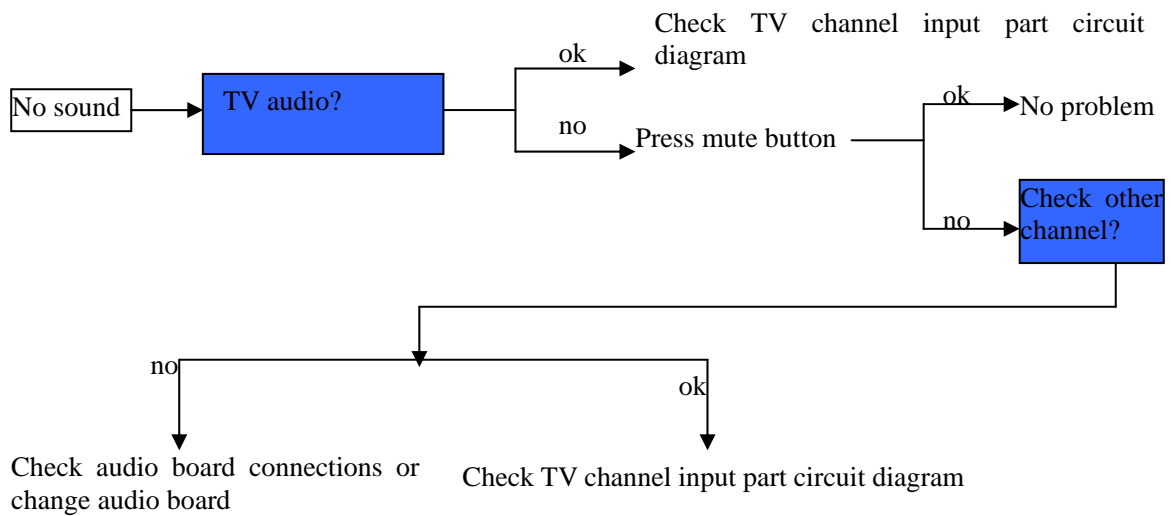
7.2. Abnormal display



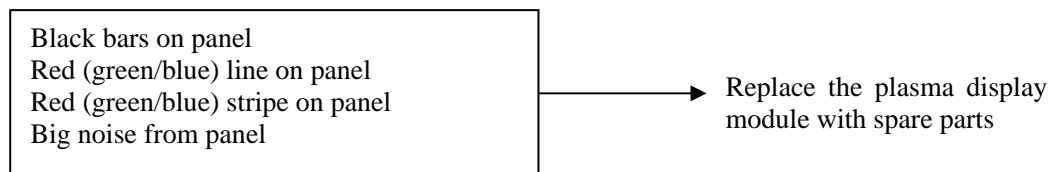
7.3. Enlarged display



7.4.No sound



7.5. panel problems



Note:

p.LED?

Power indicator at the centre of the front panel. Normal state : blue; remote command state: blue flickering.

L.LED?

LVDS indicator on the logic processing board. Normal state: yellow flickering.

OSD?

Press [MENU] to display menu on the screen.

7.6 Problem solutions:

1. Adjusting sharpness can improve picture definition.
2. Adjusting bright can improve picture administrative levels, it can display black background something.
3. If VGA or YPBPR color isn't natural. You can optimize VGA.
4. PDP power is very large system. As you power off power. Power component must discharge period of time. Power can work steadily. If you power off and power on TV continuously. Then power work unsteadily. Then PDP TV will display deviant picture.
5. TV, AV and S.video are the same white balance setting. VGA is a set white balance setting. HDTV is a set white balance setting.
6. Picture mode does be divided four modes. such as standard, brightness, soft and custom. If you adjust factory data, they will increase the same data.
7. If TV don't work normally, it will take place follow some phenomena.

No.	Trouble	Measure
1	Turn on the TV, The LED is red, no display on screen	Replace the main board or updating the software.
2	Turn on the TV, The LED is blue, but no picture or/and no sound	You should to replace the main board.
3	In TV state, can not to tuning	You should to replace the main board.
4	No teletext	You should to replace the main board.
5	No sound	You should to replace the main board.
6	can not to updating software	You should to replace the main board
7	No reaction with PC	You should change the main board

8. If the picture color is not correct in the scart1 RGB source, but the scart1 CVBS is normal .you can check the fast blank signal is whether high. If it is low, please check the circuit.
- 9.If the picture is not normal 16:9 mode or 4:3 mode when the signal equipment send 16:9 mode or 4:3 mode, please check the aspect mode whether is in "normal" mode.

8. Stand installing

Assemble instruction

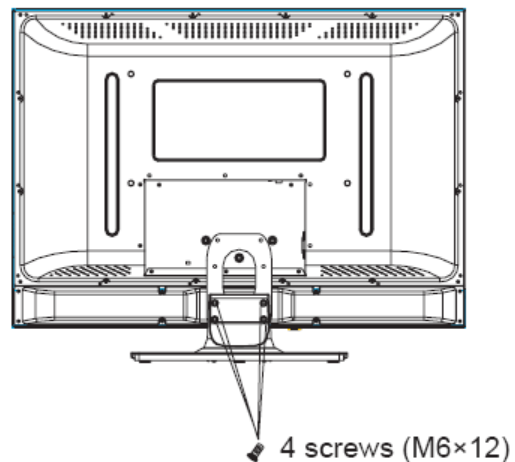
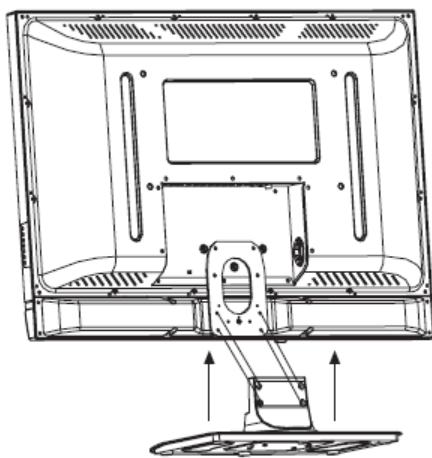
Mount Installation

Mount Preparation

Should you choose on-the-table watching mode, please install the base following the below steps:

1. Spread cloth (or other soft materials) on one smooth surface which can support enough pressure, to avoid damaging TV screen.
2. Lay this unit stably with screen downside.
3. Take out the base and assemble it with four screws (M6×12) as illustrated.

NOTE: Failure to do so may result in breaking, denting and scratching the plasma display.

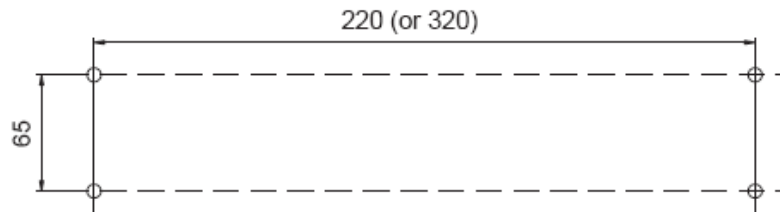


9 PDP Wall-mounting Bracket Installation Guide

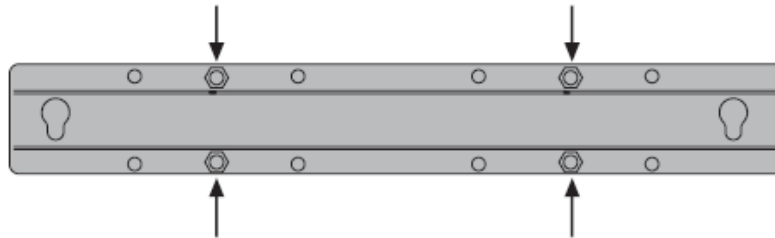
Wall bracket installation instruction

If the user need wall bracket means, please install it as follows:

1. Drill the holes by the size as illustrated (220×65 or 320×65) and insert the expansive bolts (M8×70).

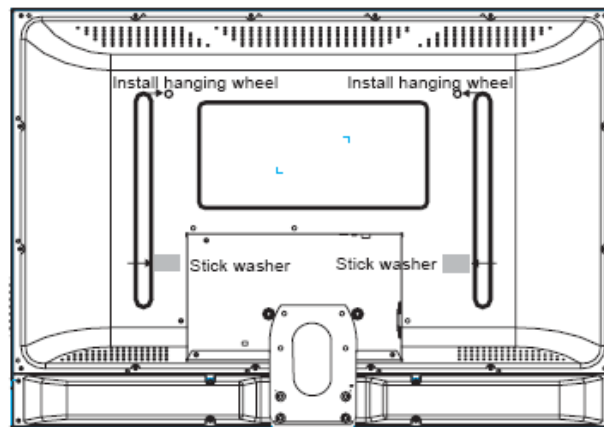


2. Fix the expansive bolts onto the wall bracket.

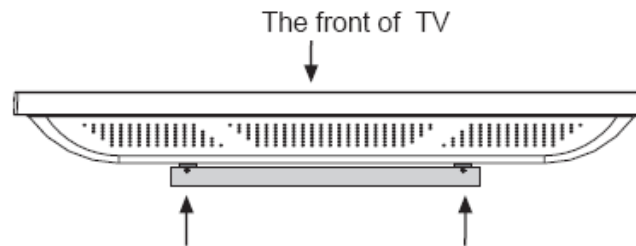


3. Install 2 hanging wheels onto the back cover, and stick 2 washers onto the positions as illustrated.

Attention: Please do not hang the TV with the two bottom holes only!



4. Hang the whole unit with hanging wheels on the fixed wall bracket, at the top of which was tightened with screws M4x35 to avoid the accidental fall of the whole unit off the wall bracket.



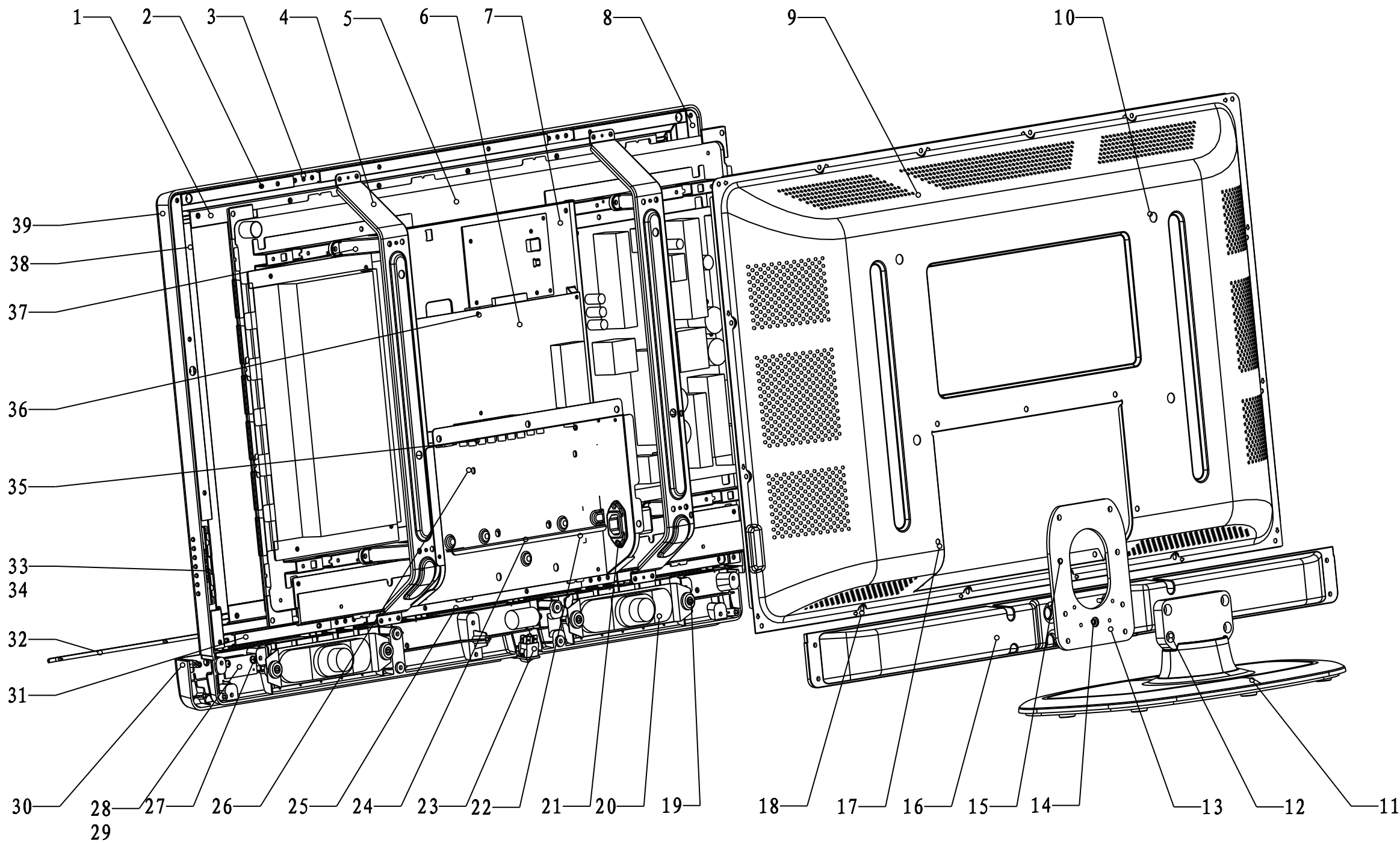
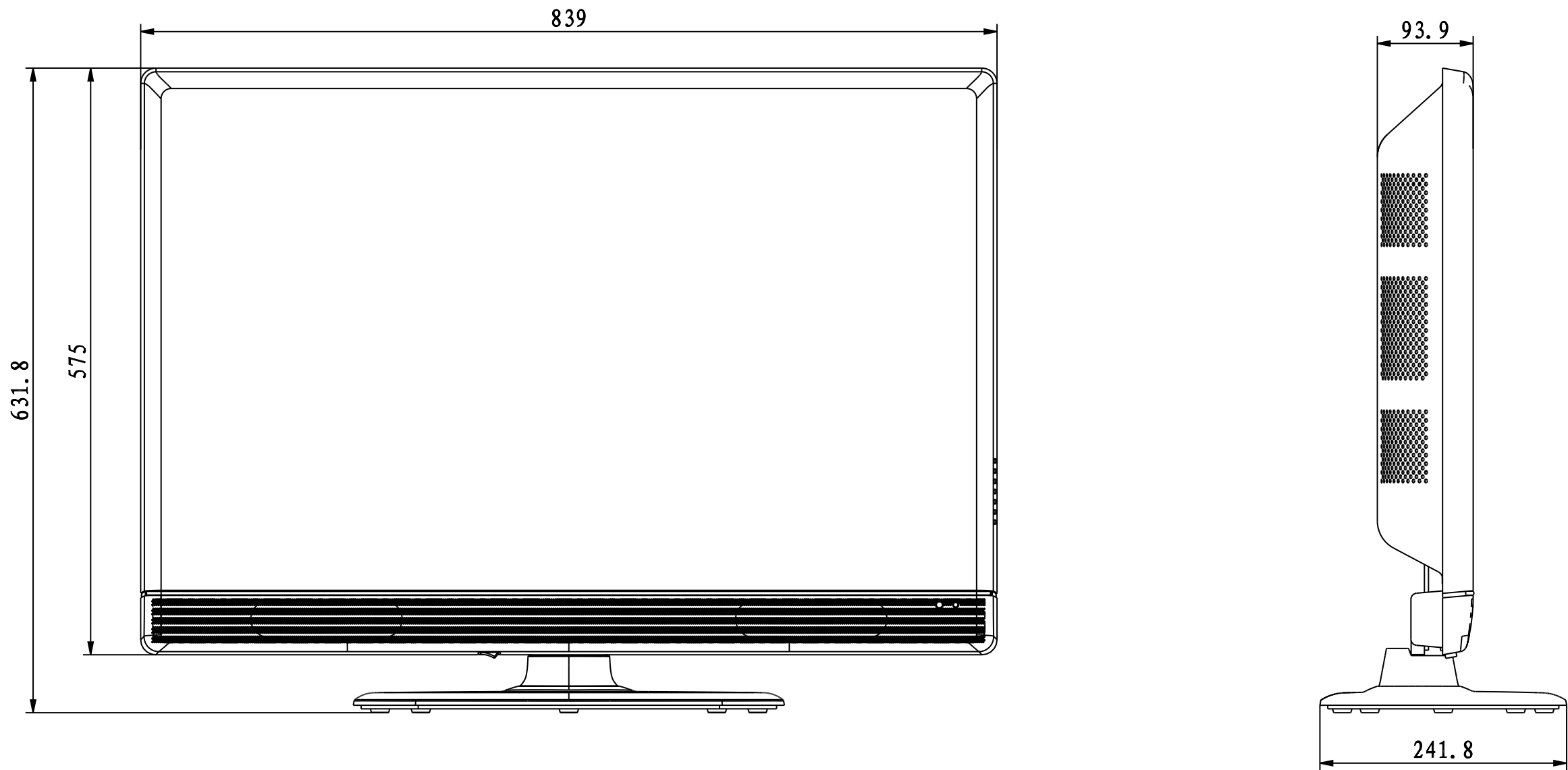
Attentions:

1. Do not attempt to install the TV by yourself. Refer all installation to qualified servicing personnel.
2. Do not install the TV on a sloping wall that makes the TV screen slant over 10 degrees from the vertical or it may tumble.
3. Before installation, examine whether the wall conforms to the specifications and whether the supplied parts can be fixed to it. e.g. cement wall or brick wall. Do not attempt to install the TV on a flexible wall such as sheetrock wall or plaster wall, etc. If the rigidity of the wall can not be measured, every mounting hole should sustain axial normal stress over 100N and shearing stress over 200N.
4. Use the provided spare parts to fix. Do not change the screw specifications at will.
5. Drilling in the wall should be carried out as required and the drilling holes should conform to the specifications. (Stipulated in the installation steps.) Otherwise, it may cause hidden danger.
6. To avoid fire and shock, do not place a radiator, heater or humidifier, etc. below the installed TV.
7. The TV should be kept away from moisture, sensors and power line. Or it may cause electric conduction, the electric shock or the resonating accident.
8. Do not install the TV in the place where there are other power input and where it is easy to crash, or produces vibration.
9. After the whole unit has been installed well, do not put any external force onto the whole unit to avoid the fall of it.
10. Make sure the power is cut off before installation; during the installment, keep the screen from hard objects or other sharp ones.
11. If you want to move this unit after installation, please contact the professional technicians.

10. Explode View and BOM

11 Schematic circuit diagram

RSAG2.025.1045 BZ



39	front cover	1	RSAG8.074.528	
38	bracket	2	RSAG8.038.1319	
37	bracket	1	RSAG8.038.1151	
36	screw	6	SJ2836-87 M3X8镀锌银白\ROH\STD	
35	screw	2	SJ2825-87 ST3X12C黑色\ROH\STD	
34	key	1	RSAG8.335.074\B2	
33	key board	1	RSAG2.908.1118\ROH	
32	ornament	1	RSAG8.647.275\电镀	
31	bracket	1	RSAG8.038.1318	
30	panel	1	RSAG8.081.368\B2\Z0	
29	lens led	1	RSAG8.640.059\ROH	
28	Led&IR Board	1	RSAG2.908.1244	
27	screw	4	SJ2824-87 ST3X10C镀锌银白\ROH	
26	scutcheon	1	RSAG8.804.3109	
25	bracket unit	1	RSAG6.150.337	
24	bracket unit	1	RSAG6.150.338	
23	Power switch	1	PS8-12-D-047B/BB\ROH	
22	scutcheon	1	RSAG8.804.371\ROH	
21	screw	2	GB/T819.1-2000 M3X8黑\ROH\STD	
20	speaker	2	YDT415B-10W4R-F	
19	screw	4	SJ2838-87 ST4X16C.II镀锌银白\ROH\ST	
18	screw	24	SJ2824-87 ST4X16C黑色\STD	
17	screw	25	GB/T818-2000 M4X8(黑)\ROH\STD	
16	screw	8	GB818/2000-T M5X12黑\STD	
15	sound-back	1	RSAG7.013.103\Z0	
14	screw	1	SJ2824-87 ST4X20C黑色\STD	
13	bracket	1	RSAG8.038.1328\hp黑	
12	screw	4	GB/T 818-2000 M6X12黑色\ROH\STD	
11	pedestal	1	RSAG8.071.054	
10	screw	4	SJ2836-87 M6X12.III\黑色	
9	back cover	1	RSAG8.074.529 \hp黑	
8	bracket	1	RSAG8.038.1316	
7	bracket	1	RSAG8.038.1132	
6	Main Board	1	RSAG2.908.1099-3	
5	PDP module	1	PDP32F13	
4	bracket unit	2	RSAG6.150.336	
3	screw	20	SJ2824-87 ST4X12F黑色	
2	bracket	1	RSAG8.038.1317	
1	bracket	2	RSAG8.038.1327	
序号	名称	数量	代 号	备 注

更改标记	数量	更改单号	签名	日期
设计				
审核				
工艺				
标准化				
批准				

PDP32V69
爆炸图

RSAG2.025.1045 BZ

阶段标记

质量

比例

1:5

第 1 页

共 1 页

青岛海信电器股份有限公司

制图:

媒体编号

旧底图总号

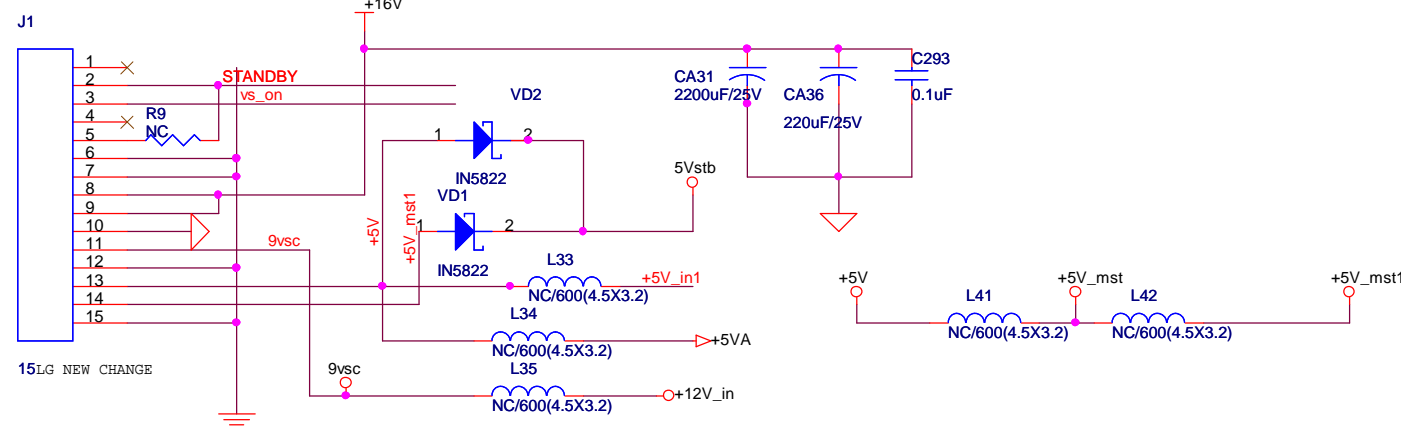
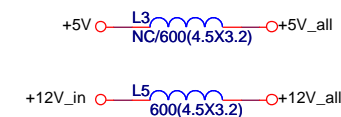
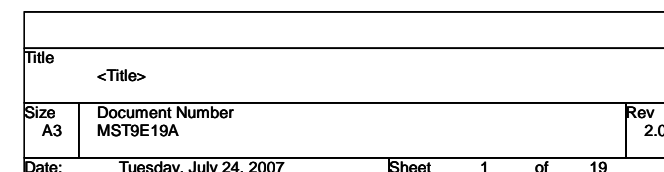
底图总号

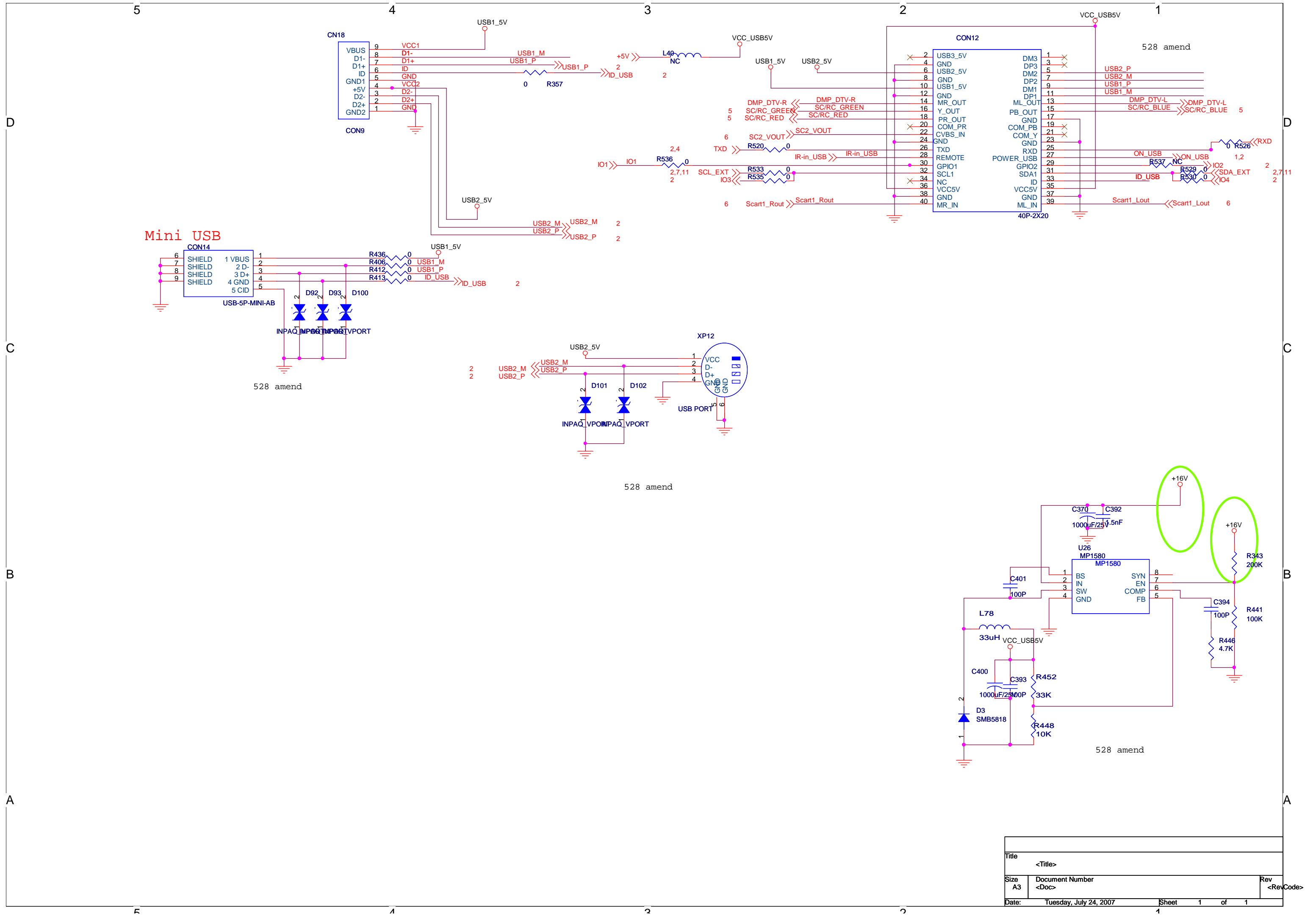
日期

签名

格式 (1)

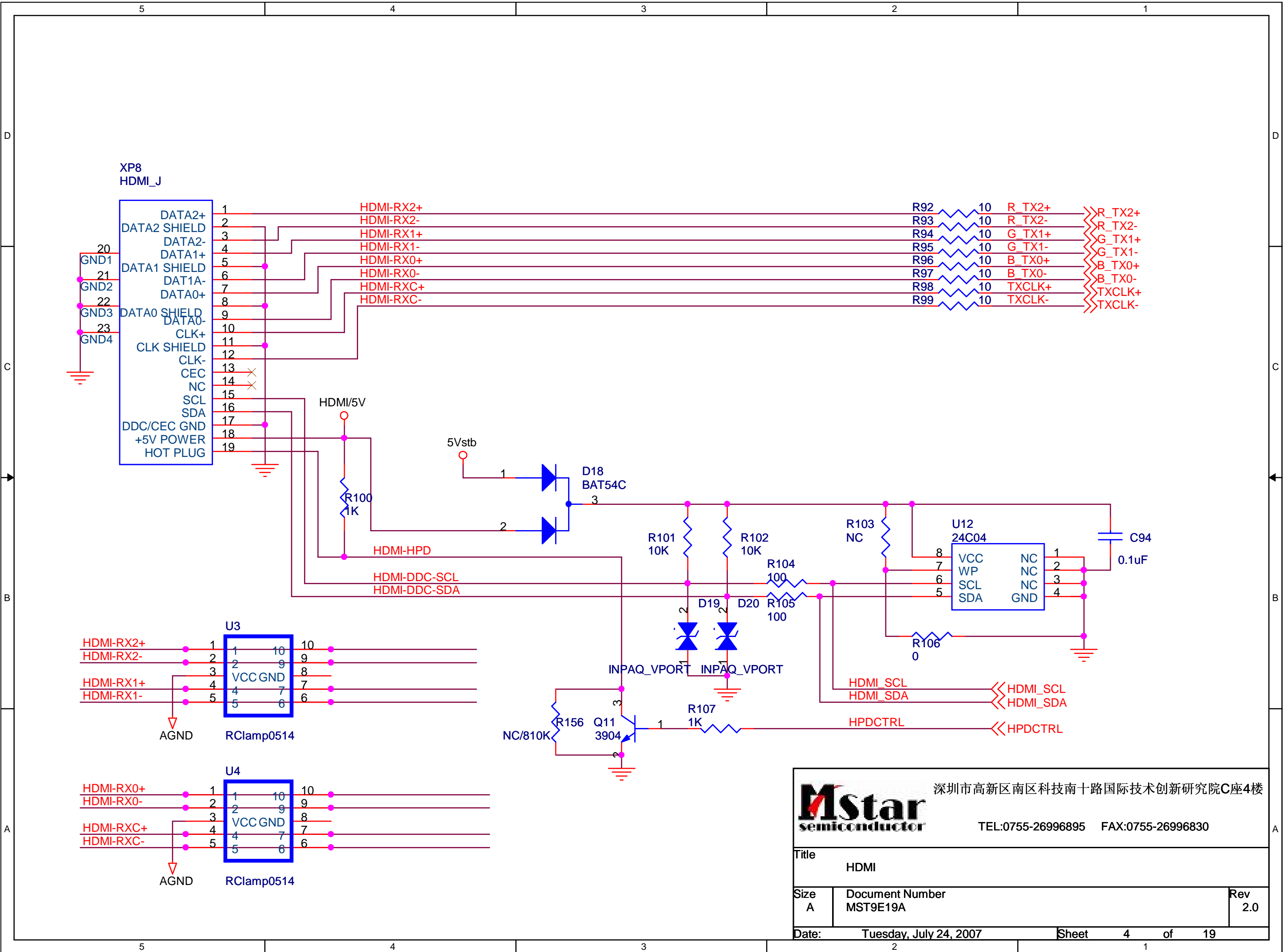
幅面: A2

[illegible]











深圳市高新区南区科技南十路国际技术创新研究院C座4楼

TEL:0755-26996895 FAX:0755-26996830

Title

HDMI

Size

A

Document Number

MST9E19A

Rev

2.0

Date

Tuesday, July 24, 2007

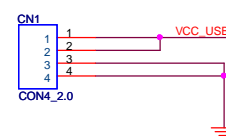
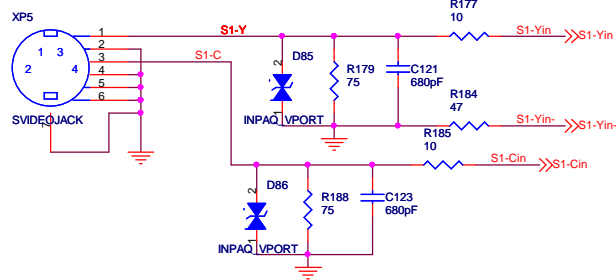
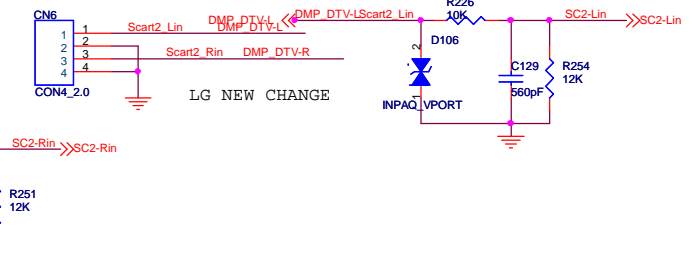
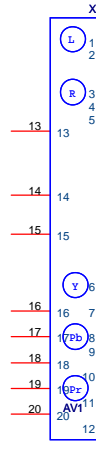
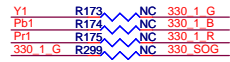
Sheet

4

of

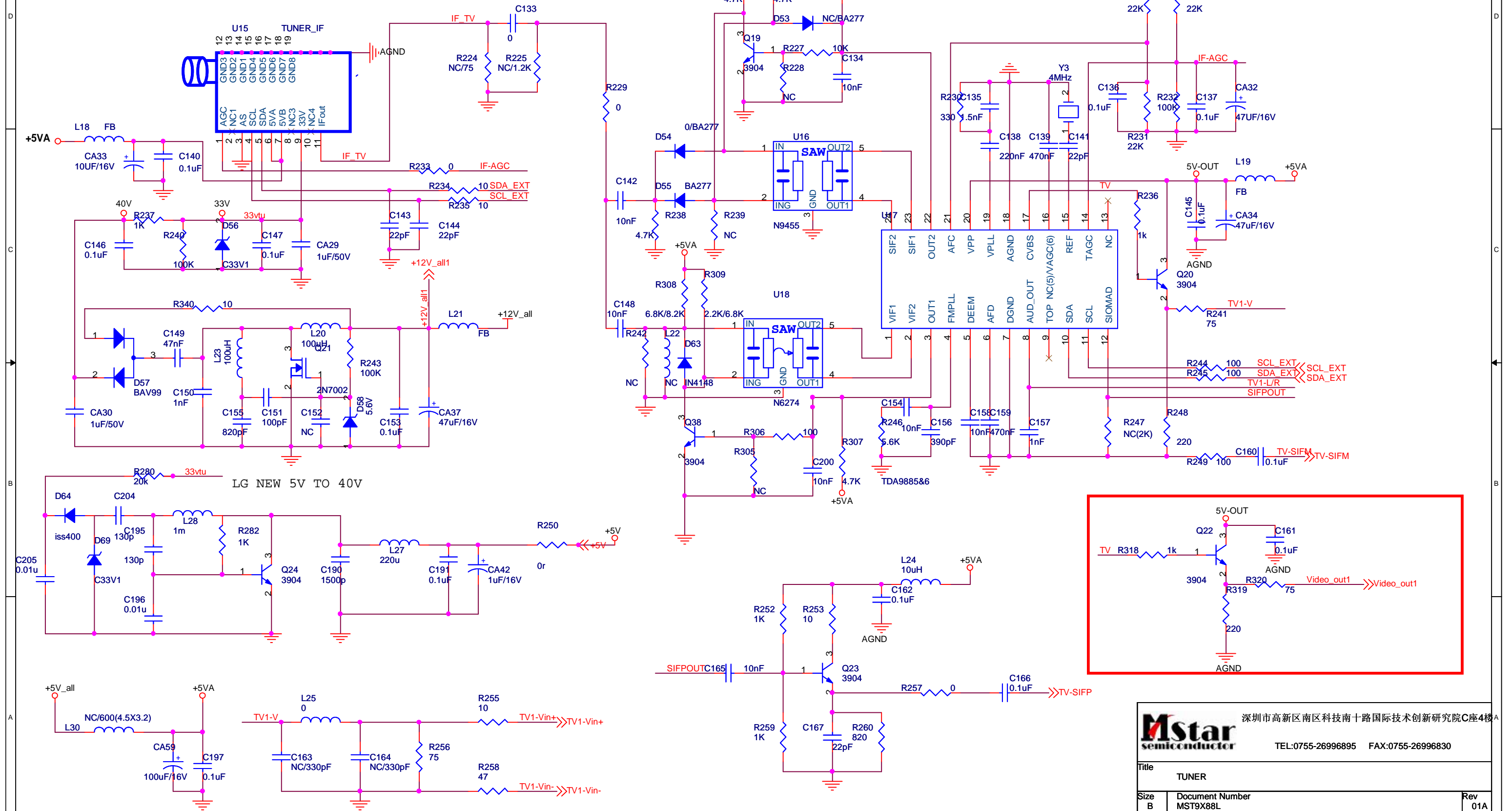
19



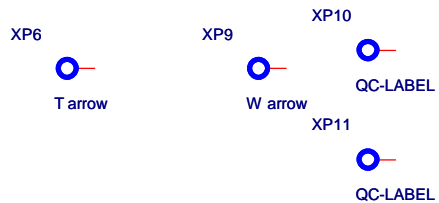
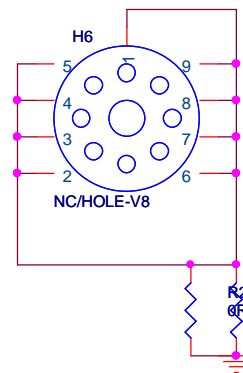
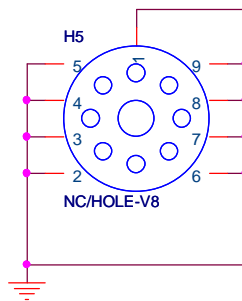
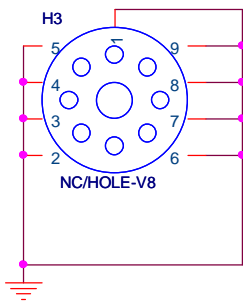
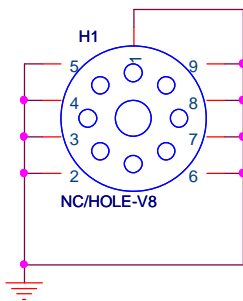
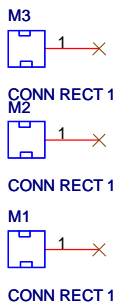
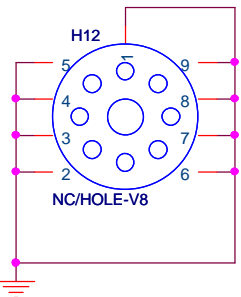
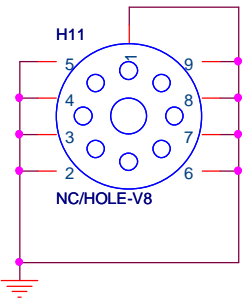
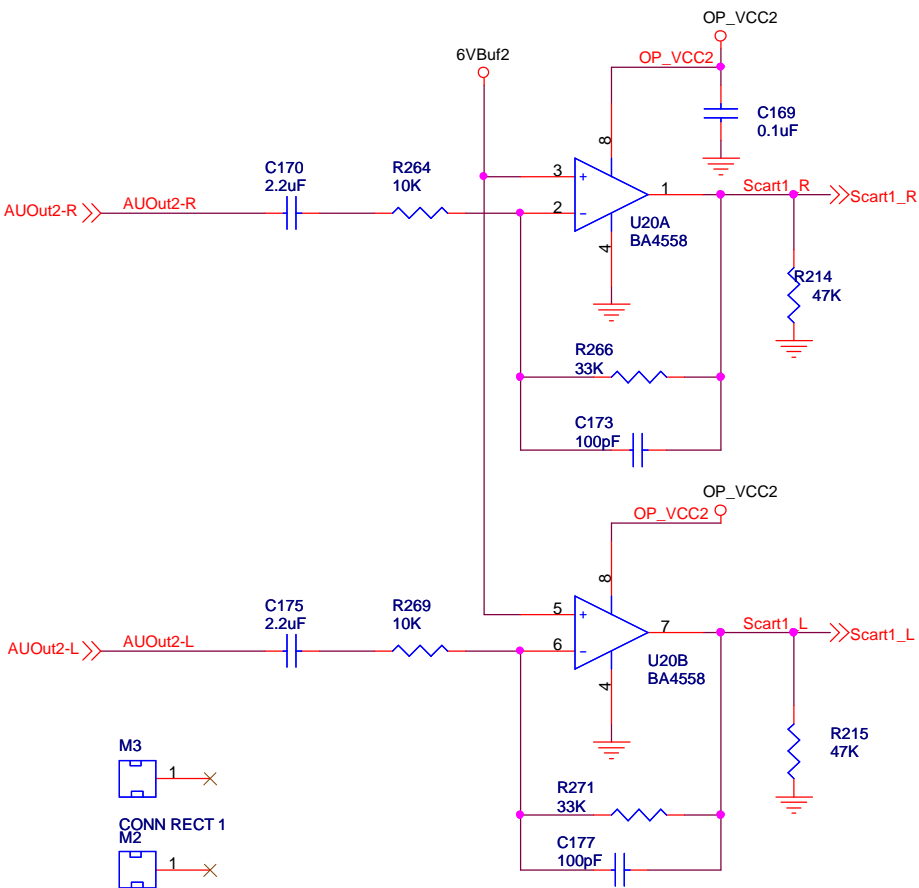
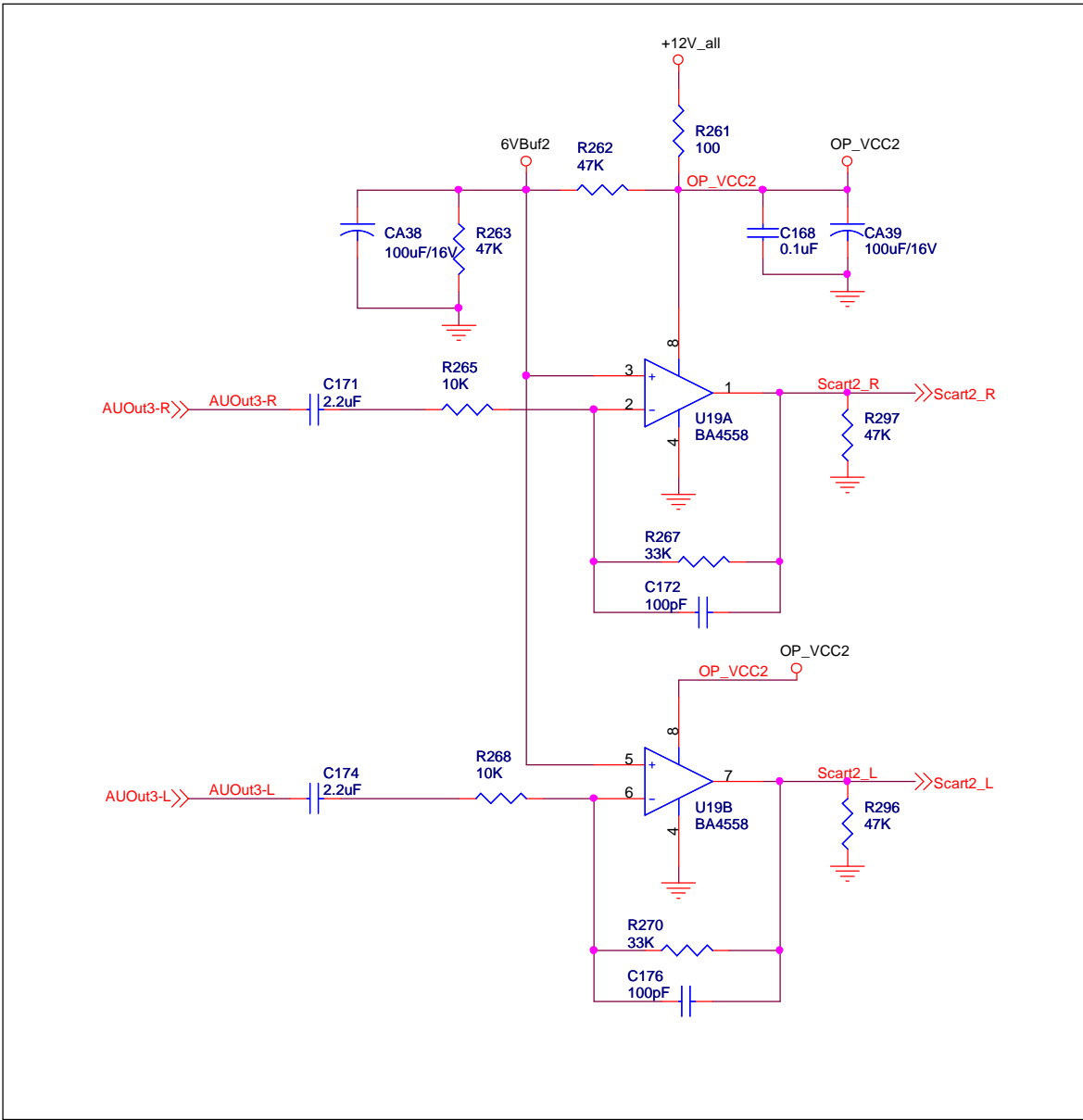


U23 PIN2 connected to PIN1 B/G,DK,I,L
U23 PIN2 connected to GND L'

I2C ADDRESS(R263 NC):
READ is 0X87
WRITE is 0X86



Audio OP(AUOUTL3/AUOUTR3; AUOUTL2/AUOUTR2)



Title		
MSTAR		
Size	Document Number	Rev
A3	MST9E19A	0.01
Date:	Tuesday, July 24, 2007	Sheet 8 of 19

