

LCD TELEVISION

SERVICE MANUAL

LC-37HU19

CONTENTS

Safety instructions.....	1
Adjustment instruction	3
working principle analysis.....	6
block diagram.....	7
IC block diagram.....	8
Wiring diagram	14
Troubleshooting guide	15
Schematic diagram.....	21
APPENDIX-A: Assembly list	
APPENDIX-B: Exploded view	

Attention: This service manual is only for service personnel to take reference with. Before servicing please read the following points carefully.

Safety precautions

1. Instructions

Be sure to switch off the power supply before replacing or welding any components or inserting/plugging in connection wire. Anti static measures to be taken (throughout the entire production process!):

- a) Do not touch here and there by hand at will;
- b) Be sure to use anti static electric iron;
- c) It's a must for the welder to wear anti static gloves.

Please refer to the detailed list before replacing components that have special safety requirements. Do not change the specs and type at will.

2. Points for attention in servicing of LCD

2.1 Screens are different from one model to another and therefore not interchangeable. Be sure to use the screen of the original model for replacement.

2.2 The operation voltage of LCD screen is 700-825V. Be sure to take proper measures in protecting yourself and the machine when testing the system in the course of normal operation or right after the power is switched off. Please do not touch the circuit or the metal part of the module that is in operation mode. Relevant operation is possible only one minute after the power is switched off.

2.3 Do not use any adapter that is not identical with the TV set. Otherwise it will cause fire or damage to the set.

2.4 Never operate the set or do any installation work in bad environment such as wet bathroom, laundry, kitchen, or nearby fire source, heating equipment and devices or exposure to sunlight etc. Otherwise bad effect will result.

2.5 If any foreign substance such as water, liquid, metal slices or other matters happens to fall into the module, be sure to cut the power off immediately and do not move anything on the module lest it should cause fire or electric shock due to contact with the high voltage or short circuit.

2.6 Should there be smoke, abnormal smell or sound from the module, please shut the power off at once. Likewise, if the screen is not working after the power is on or in the course of operation, the power must be cut off immediately and no more operation is allowed under the same condition.

2.7 Do not pull out or plug in the connection wire when the module is in operation or just after the power is off because in this case relatively high voltage still remains in the capacitor of the driving circuit. Please wait at least one minute before the pulling out or plugging in the connection wire.

2.8 When operating or installing LCD please don't subject the LCD components to bending, twisting or extrusion, collision lest mishap should result.

2.9 As most of the circuitry in LCD TV set is composed of CMOS integrated circuits, it's necessary to pay attention to anti statics. Before servicing LCD TV make sure to take anti static measure and ensure full grounding for all the parts that have to be grounded.

2.10 There are lots of connection wires between parts behind the LCD screen. When servicing or moving the set please take care not to touch or scratch them. Once they are damaged the screen

would be unable to work and no way to get it repaired.

If the connection wires, connectors or components fixed by the thermotropic glue need to disengage when service, please soak the thermotropic glue into the alcohol and then pull them out in case of damage.

2.11 Special care must be taken in transporting or handling it. Exquisite shock vibration may lead to breakage of screen glass or damage to driving circuit. Therefore it must be packed in a strong case before the transportation or handling.

2.12 For the storage make sure to put it in a place where the environment can be controlled so as to prevent the temperature and humidity from exceeding the limits as specified in the manual. For prolonged storage, it is necessary to house it in an anti-moisture bag and put them altogether in one place. The ambient conditions are tabulated as follows:

Temperature	Scope for operation	0 ~ +50 °C
	Scope for storage	-20 ~ +60 °C
Humidity	Scope for operation	20% ~ 85%
	Scope for storage	10% ~ 90%

2.13 Display of a fixed picture for a long time may result in appearance of picture residue on the screen, as commonly called “ghost shadow”. The extent of the residual picture varies with the maker of LCD screen. This phenomenon doesn’t represent failure. This “ghost shadow” may remain in the picture for a period of time (several minutes). But when operating it please avoid displaying still picture in high brightness for a long time.

3. Points for attention during installation

3.1 The front panel of LCD screen is of glass. When installing it please make sure to put it in place.

3.2 For service or installation it’s necessary to use specified screw lest it should damage the screen.

3.3 Be sure to take anti dust measures. Any foreign substance that happens to fall down between the screen and the glass will affect the receiving and viewing effect

3.4 When dismantling or mounting the protective partition plate that is used for anti vibration and insulation please take care to keep it in intactness so as to avoid hidden trouble.

3.5 Be sure to protect the cabinet from damage or scratch during service, dismantling or mounting.

Alignment instructions

1. Test equipment

PM5518 (video signal generator)
VG-849 (VGA and HDMI signal generator)
CA210 (white balancer)

2 Alignment flow-chart

The alignment flow-chart is shown as fig-1

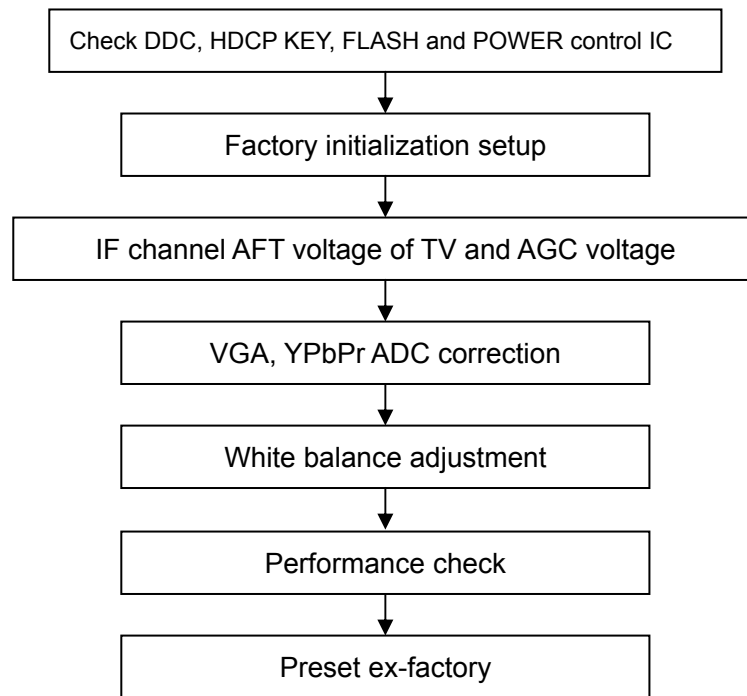


Fig-1 adjustment flow-chart

3 Unit adjustments

Connect all the boards according to wiring diagram, connect with power and observe the display.

Method for entering factory menu: press “INPUT”, “2”, “5”, “8” and “0” in turn to enter factory menu; press “CH+” and “CH-” to select adjustment items and press “VOL+” and “VOL-” to adjust value items, press “MENU” continuously to exit.

Method for software upgrading: enter factory menu and select “OPTION”, set ISP to 1 or insert jump wire J1, then you can upgrade on line. After upgrade, set ISP back to 0 or pull out jump wire J1.

3.1 Initialization

Enter factory menu, select “OPTION” and “HOTEL OPTION” sub-menu, adjustment of items to see table1.

Table1 sub-menu adjustment

Items	Preset	Introduce
HOTEL	0	1: HOTEL OPTION of factory menu is optional 0: HOTEL OPTION of factory menu is not optional
LOGO	1	1: display LOGO in no signal or turn on 0: no LOGO display

ADC PRESCALE	00A	Software auto preset according the power consumption
SIF PRESCALE	000	Software auto preset according the power consumption
BACK LIGHT	13	Software auto preset according the screen
ALL COLOR	1	1: white balance of each channel auto offset based on the HDMI white balance 0: white balance of each channel adjust the offset base separately
NO STANDBY	0 0	01: turn on 00: memory function of turn on 10: standby
INIT VOLUME	0-100	Volume when turn on
INIT CHANNEL	1-200	Channel when turn on
INIT SRC	Program source	Input Source when turn on
EEPROM-MEMORAY RECALL	>	EEPROM Initialization (operate when EEPROM data chaos)

3.2 Adjustment for AFT voltage and AGC voltage of IF channel in TV

3.2.1 IF AFT adjustment

Enter factory menu, set IF VCO to 1, or press "INPUT", "2", "5", "8", "1" to enter VCO adjustment mode, disconnect J2, adjust LZ100 to value 2.5V of TP5(B face), then wed J2.

3.2.2 IF AGC adjustment

Input 184.25MHz RF signal of 60DBuv from RF terminal for china, and 175.25MHz for America, adjust RZ133 to value 2V of TP1(B face) and there should be no obvious snowy picture. Increase the signal to 90DBVuv and it should be display normally and no obvious noise.

3.3 White balance adjustment

3.3.1 HDMI white balance correct

- Input VG-848 signal to HDMI: TIMING854(800*600/60Hz) 8 level gray scale of PAT920, adjust the balance with CA210.
- Enter COLOR TEMP sub menu and select color temperature of standard(9300K)
- Fixed B OFF, adjust R OFF, G OFF to let the color coordinate of the second level be 283,297(CPT panel) and the brightness be 3nit ~10nit or so; Fixed B GAIN, adjust R GAIN, G GAIN to let the color coordinate of the seventh level be 283,297(CPT panel). Repeat adjust R OFF, G OFF, R GAIN and G GAIN, until the two color coordinate of the level gray scale be 283,297(CPT panel).

3.3.2 VGA/YPbPr white balance check and correct

- Connect VG-848 signal of VGA to VGA terminal and input TIMING854(800*600/60HZ) (PATTERN:CROSS), and auto adjust to full screen then input PAT948 black/white signal, enter submenu of ADC ADJ, select AUTOTUNE and wait for OK display. Input PAT920(8 gray levels), check if the white balance is normal, if not, set ALL COLOR to 0 and fine adjust according the method of 3.3.2
- connect VG-848 signal of YPbPr to YPbPr terminal and input TIMING972(1080I/60Hz) PAT908 color bar(include back/white bar), enter submenu of ADC ADJ, select AUTOTUNE and wait for OK display. Input PAT920(8 gray levels), check if the white balance is normal, if not, set ALL COLOR to 0 and fine adjust according the method of 3.3.2
- Input AV signal(PM5518, 8 gray levels PAL for China and NTSC for America) to VIDEO 1 terminal, check if the white balance is normal, if not, set ALL COLOR to 0 and fine adjust according the method of 3.3.2.

Note: it can't set back to 1 once ALL COLOR changes to 0.

4 Performance check

4.1 TV function

Enter searching menu → auto search, connect RF-TV terminal with central signal source and check if the picture is normal, if there are channels be skipped. Check CCD and V-CHIP function for America.

4.2 AV/S, YPbPr terminals

Input AV/S, YPbPr/YCbCr HD signal, check if it is normal.

4.3 VGA terminal

Insert VGA terminal, input VGA format signal of 640X480@60 Hz and check if the display is normal.

4.4 HDMI terminal

Insert HDMI terminal, input 640X480@60Hz signal, check if the display is normal. Check HDCP function.

4.5 check sound channel

Check the speaker and earphone of each channel.

4.6 RS232 terminal

Put the earphone line into COM terminal, check the long-distance control function with special test software.

4.7 other function check

Check the turn on/turn off timer, asleep timer, picture/sound mode, OSD, freeze/mute, stereo/SAP(for America), ect.

4.6 presetting before ex-factory

Item	Setting
PICTURE MODE	NAUTRAL
COLOR MODE	DK
SOUND MODE	NEWS
NR	WEAK
ZOOM	FULL

Item	Setting
OSD	English/Chinese
HALFTONE	50
DURATION	15

Item	Setting
VGA/HDMI	STANDARD
ANTENNA	CATV
Turn off channel	TV

Working principle analysis of the unit

The RF signal received by antenna will be sent to tuner TUN1, then IF signal will be obtained through high amplifier and mixed frequency, through pre-intermediate amplified by VZ100, then it will be sent to acoustic surface-wave ZZ101 to do IF filter and get better IF characteristics, then it will be sent to NZ100 (R2S1040) to do intermediate amplification, phase-locked loop VCO and synchronous wave detection to get video signal TV-CVBS; after pre-intermediate amplification IF will also be sent to acoustic surface-wave ZZ100 to do filter at the same time, then it will be sent to NZ100 to do intermediate amplification and output the second sound intermediate frequency signal (TV-SIF).

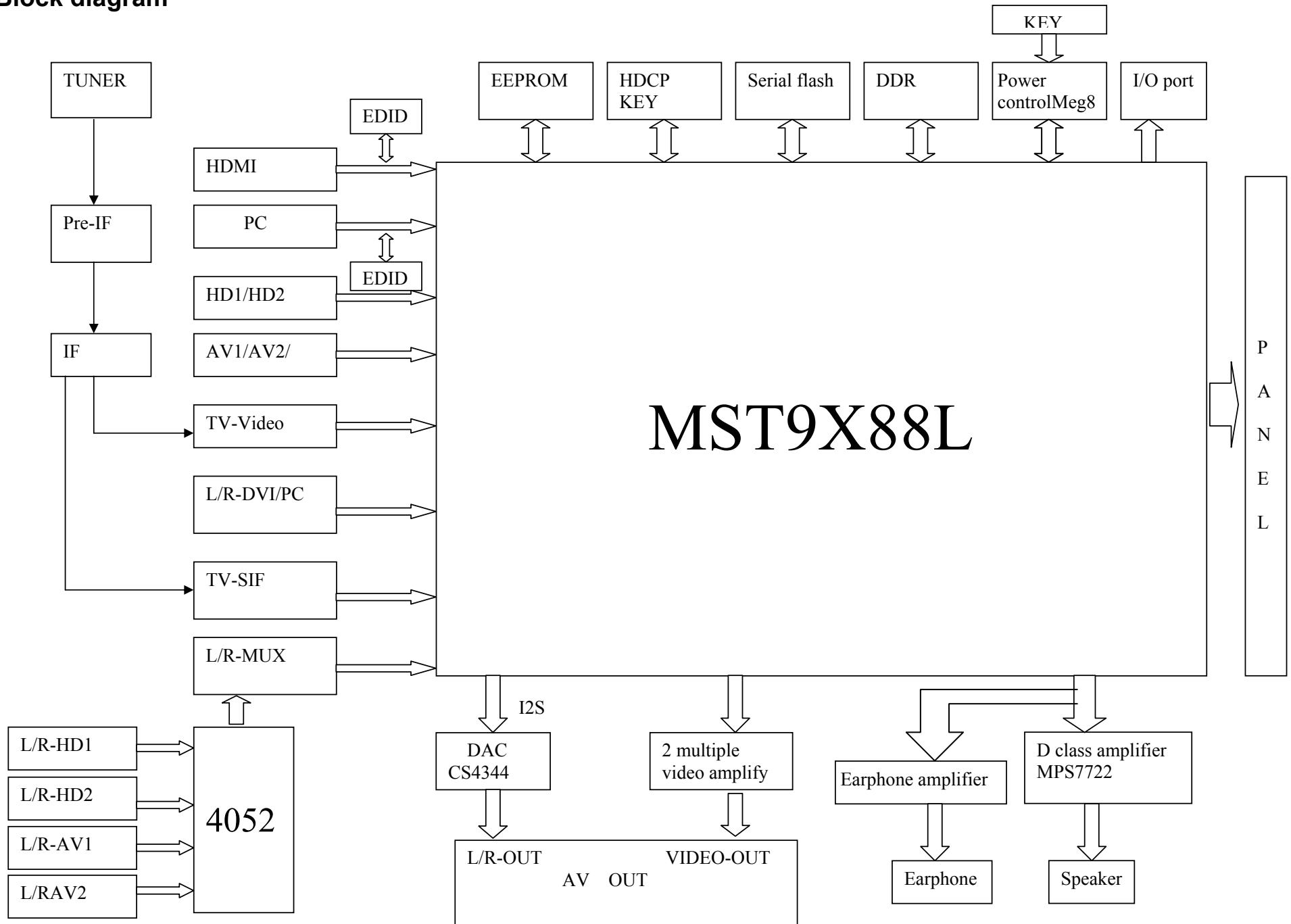
The TV-CVBS signal output from R2S1040 together with TV-SIF will be sent to main IC NS4 (MST9U88L). Video signal of AV1, AV2, S-VIDEO, YPbPr1 and YPbPr2 will also be sent to MST9U88L; while the audio signal of them via audio switch NW200(HEF4052BT) selection to MST9U88L (AV1 and S-VIDEO share one audio port). Video and audio signal of VGA, HDMI will be sent to MST9U88L, too.

The main IC NS4(MST9U88L) is a high performance and fully integrated IC, which can realize HDMI interface processing, video demodulating, video switch selection, A/D and D/A conversion, interlace/de-interlace processing, modes conversion, OSD and low-voltage differential output, ect. And it also has functions of audio selection, processing and MCU.

The video signal via MST9U88L processing, output 4 pairs differential signal and 1 pair clock signal for LCD panel display. Video signal of AV1, AV2, S-VIDEO and TV via initial selection and processing, output video signal of AV-OUT, after double video amplifying, it will be sent to AV-OUT.

Audio signal via MST9U88L processing, output two ways; one way will be sent to sound amplifier NA6(MP7722DF) amplifying, then sent to speaker. At the same time, it also sent to earphone sound amplifier N350(BH3547F), after amplifying then sent to earphone. Another way will be sent to D/A converter NS6(CS4344) through I2S bus, convert to analog sound signal L/R output through AV-OUT.

Block diagram

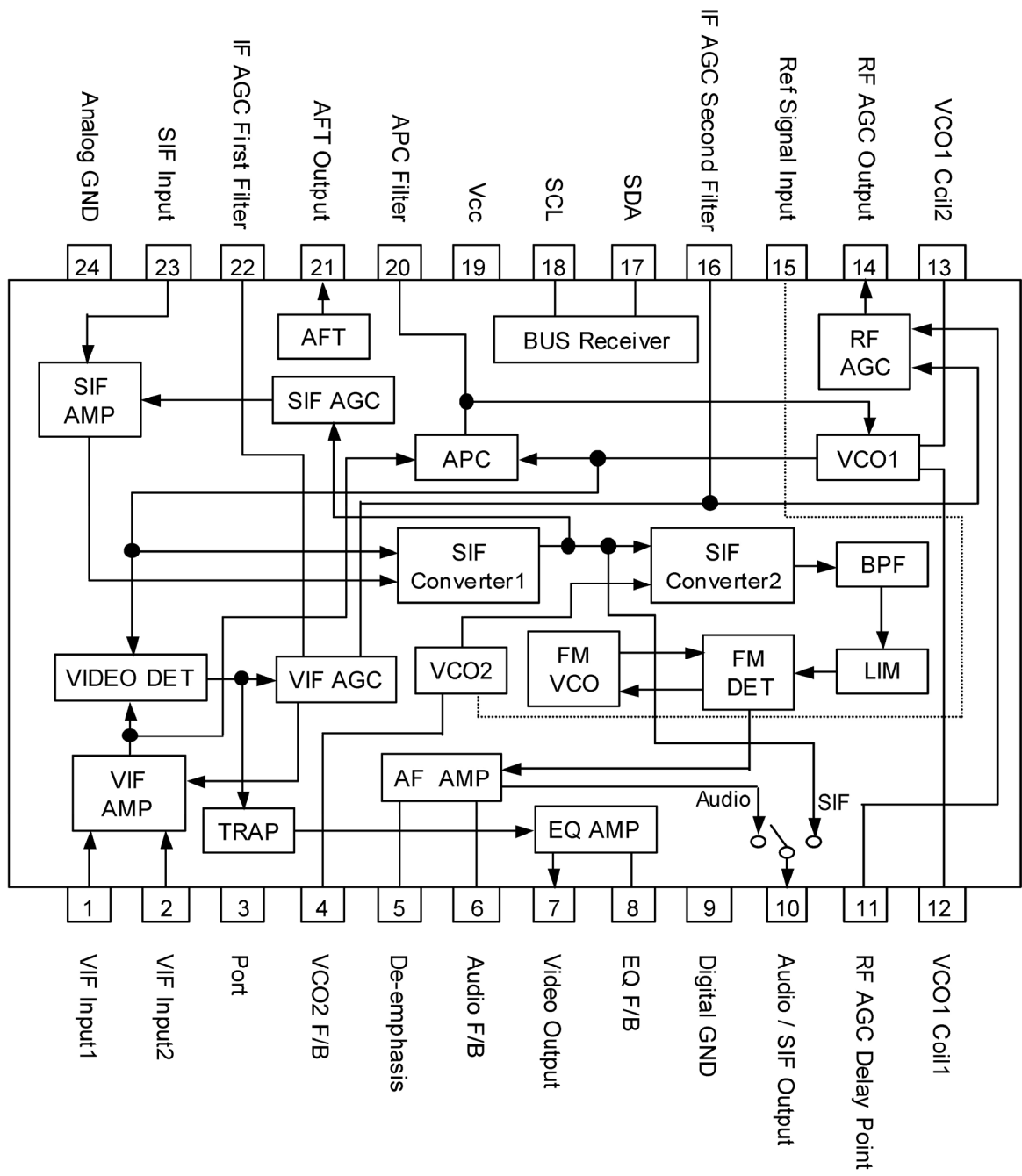


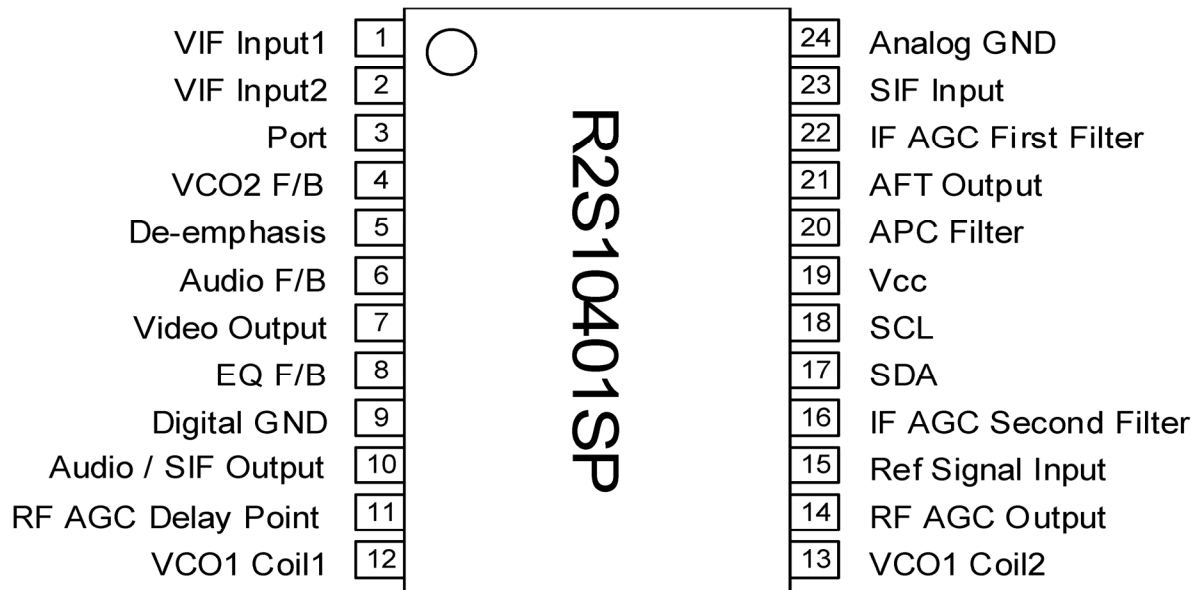
Pins description:

4, 5, 7, 8, 10, 11, 1, 2: HDMI input
16, 17: horizontal/vertical synchronous input
27, 25, 22: RGB input
30, 32, 35: YpbPr2 input
41, 44, 46: YpbPr1 input
48, 49: S-VIDEO input
54: AV1-V input
55: AV2-V input
57: TV-CVBS input
59: CVBS output(AVOUT-V)
71, 72: VGA-L/R input
73, 74: AV1(S)/AV2/ YpbPr1/ YpbPr2-L/R input
178: search program synchronous test input
188: HDMI hot-plug test output
189: image switch output
192: backlight control output
193: panel voltage contort output
85, 86: L/R output
234,236,238,239: I2S bus(AVOUT-A)
199-208: 4 pairs differential signal and 1pair clock signal output
174: SDA
175: SCL

2. R2S10401

R2S10401SP is a semiconductor integrated circuit consisting of PLL split-carrier VIF/SIF signal processing system compliant with PAL.





Pin description:

1, 2: VIF input	10: TV-SIF output
23: SIF input	17: SDA
7: TV-CVBS output	18: SCL

3. MP7722DF

The MP7722 is a stereo 20W Class D Audio Amplifier. It is one of MPS's second generation of fully integrated audio amplifiers which dramatically reduces solution size by integrating the following:

180mΩ power MOSFETs

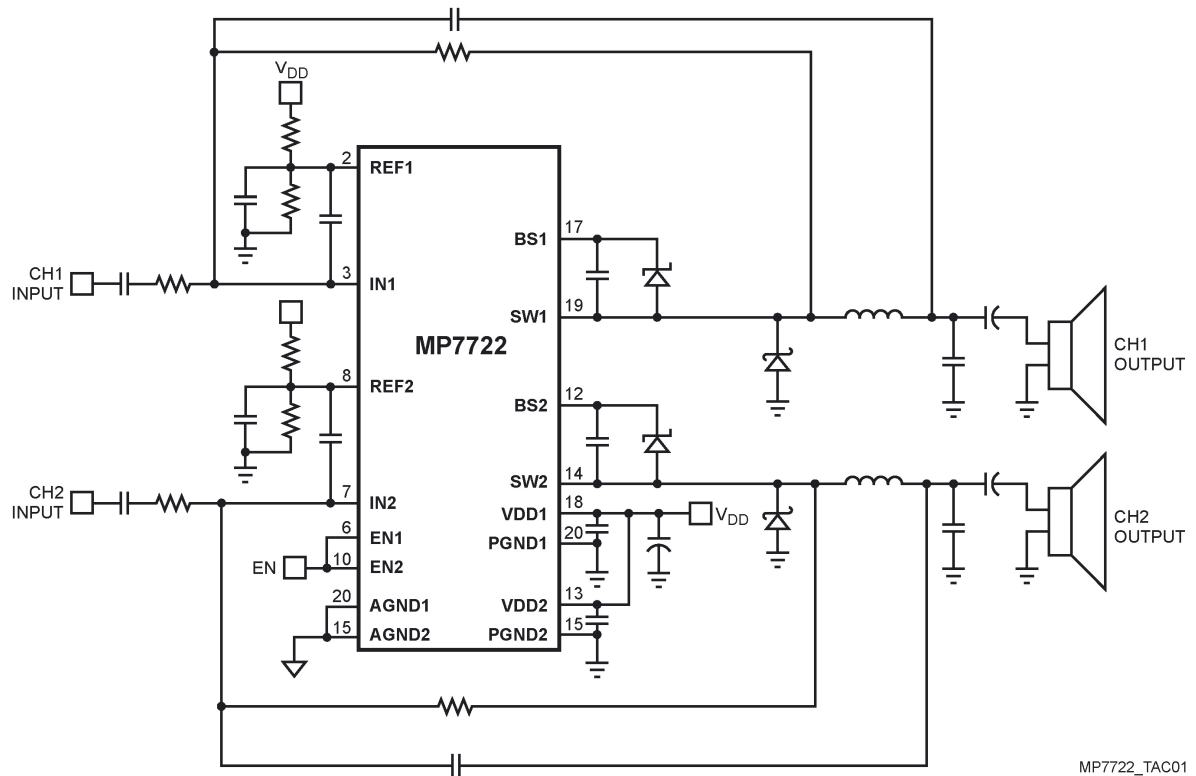
Startup / Shutdown pop elimination

Short circuit protection

Mute / Standby

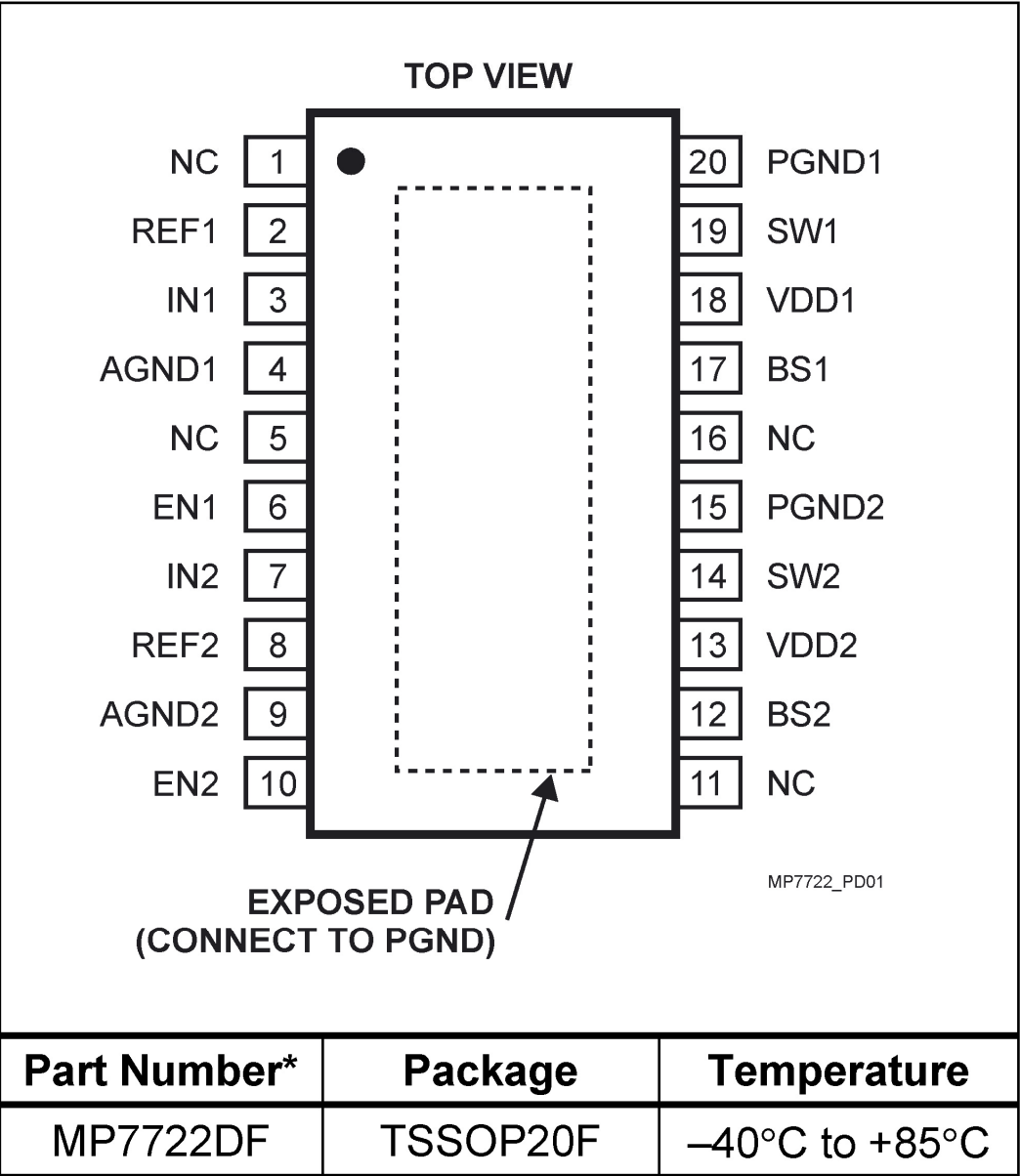
The MP7722 utilizes a single ended output structure capable of delivering 2 x 20W into 4Ω speakers. MPS Class D Audio Amplifiers exhibit the high fidelity of a Class A/B amplifier at efficiencies greater than 90%. The circuit is based on the MPS' proprietary variable frequency topology that delivers low distortion, fast response time and operates on a single power supply.

TYPICAL APPLICATION



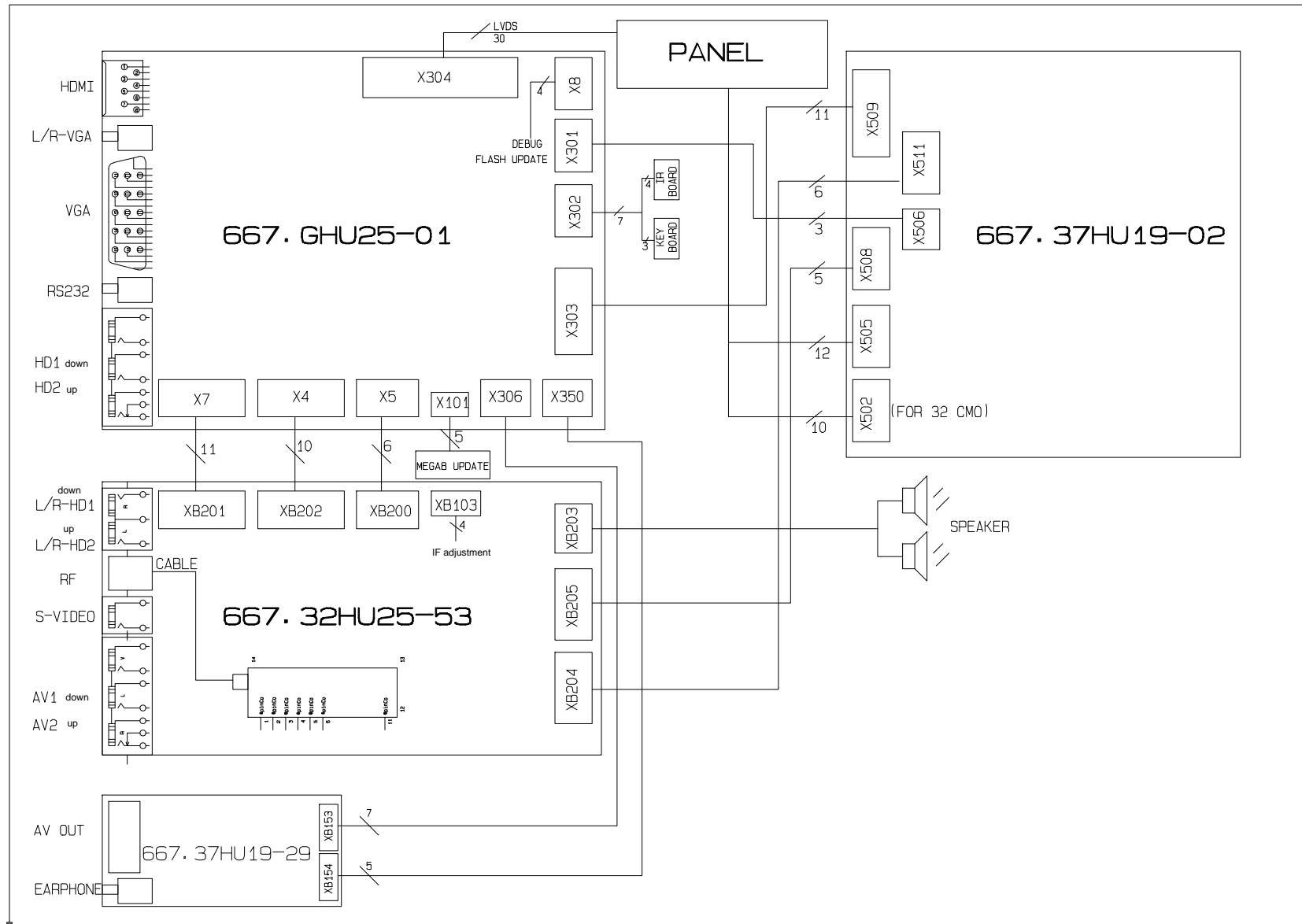
MP7722_TAC01

PACKAGE REFERENCE



Pin description:
1, 7: L/R input
19, 14: L/R output
6, 10: mute control input

Wiring diagram



Trouble shooting

1. Fault clearance

Before servicing please check to find the possible causes of the troubles according to the table below.

1.1 Antenna (signal):

Picture is out of focus or jumping	<ul style="list-style-type: none">● Bad status in signal receiving● Poor signal● Check if there are failures with the electrical connector or the antenna.● Check if the antenna is properly connected.
Fringe in picture	<ul style="list-style-type: none">● Check if the antenna is correctly oriented.● Maybe there is electric wave reflected from hilltop or building.
Picture is interfered by stripe shaped bright spots	<ul style="list-style-type: none">● Possibly due to interference from automobile, train, high voltage transmission line, neon lamp etc.● Maybe there is interference between antenna and power supply line. Please try to separate them in a longer distance.● Maybe the shielded-layer of signal wire is not connected properly to the connector.
There appear streaks or light color on the screen	<ul style="list-style-type: none">● Check if interfered by other equipment and if interfered possibly by the equipment like transmitting antenna, non-professional radio station and cellular phone.

1.2 TV set:

Symptoms	Possible cause
Unable to switch the power on	<ul style="list-style-type: none">● Check to see if the power plug has been inserted properly into the socket.
No picture and sound	<ul style="list-style-type: none">● Check to see if the power supply of liquid crystal TV has been switched on. (As can be indicated by the red LED at the front of the TV set)● See if it's receiving the signal that is transmitted from other source than the station● Check if it's connected to the wrong terminal or if the input mode is correct.● Check if the signal cable connection between video frequency source and the liquid crystal TV set is correct.
Deterioration of color phase or color tone	<ul style="list-style-type: none">● Check if all the picture setups have been corrected.
Screen position or size is not proper	<ul style="list-style-type: none">● Check is the screen position and size is correctly set up.
Picture is twisted and deformed	<ul style="list-style-type: none">● Check to see if the picture-frame ratio is properly set up.
Picture color changed or colorless	<ul style="list-style-type: none">● Check the "Component" or "RGB" settings of the liquid crystal TV set and make proper adjustment according to the

	signal types.
Picture too bright and there is distortion in the brightest area	<ul style="list-style-type: none"> ● Check if the contrast setting is too high. ● Possibly the output quality of DVD broadcaster is set too high. ● It maybe also due to improper terminal connection of the video frequency signal in a certain position of the system.
Picture is whitish or too bright in the darkest area of the picture	<ul style="list-style-type: none"> ● Check if the setting for the brightness is too high ● Possibly the brightness grade of DVD player (broadcaster) is set too high.
No picture or signal produced from the displayer if “XXX in search” appears.	<ul style="list-style-type: none"> ● Check if the cable is disconnected. ● Check if it's connected to the proper terminal or if the input mode is correct.
There appears an indication - “outside the receivable scope)	<ul style="list-style-type: none"> ● Check if the TV set can receive input signal. The signal is not correctly identified and VGA format is beyond the specified scope.
Remote control cannot work properly	<ul style="list-style-type: none"> ● Check if the batteries are installed in the reverse order. ● Check if the battery is effective. ● Check the distance or angle from the monitor. ● Check if there is any obstruct between the remote control and the TV set. ● Check if the remote control signal- receiving window is exposed to strong fluorescence.
No picture and sound, but only hash.	<ul style="list-style-type: none"> ● Check if the antenna cable is correctly connected, or if it has received the video signal correctly.
Blur picture	<ul style="list-style-type: none"> ● Check if the antenna cable is correctly connected. ● Of if it has received the right video signal.
No sound	<ul style="list-style-type: none"> ● Check if the “mute” audio frequency setting is selected. ● Check if the sound volume is set to minimum. ● Make sure the earphone is not connected. ● Check if the cable connection is loose.
When playing VHS picture search tape, there are lines at the top or bottom of the picture.	<ul style="list-style-type: none"> ● When being played or in pause VHS picture search tape sometimes can't provide stable picture, which may lead to incorrect display of the liquid crystal TV, In this case please press “auto” key on the remote control so as to enable the liquid crystal TV set to recheck the signal and then to display correct picture signal

2. Identification criteria for the bright spot and dark spot of the LCD screen

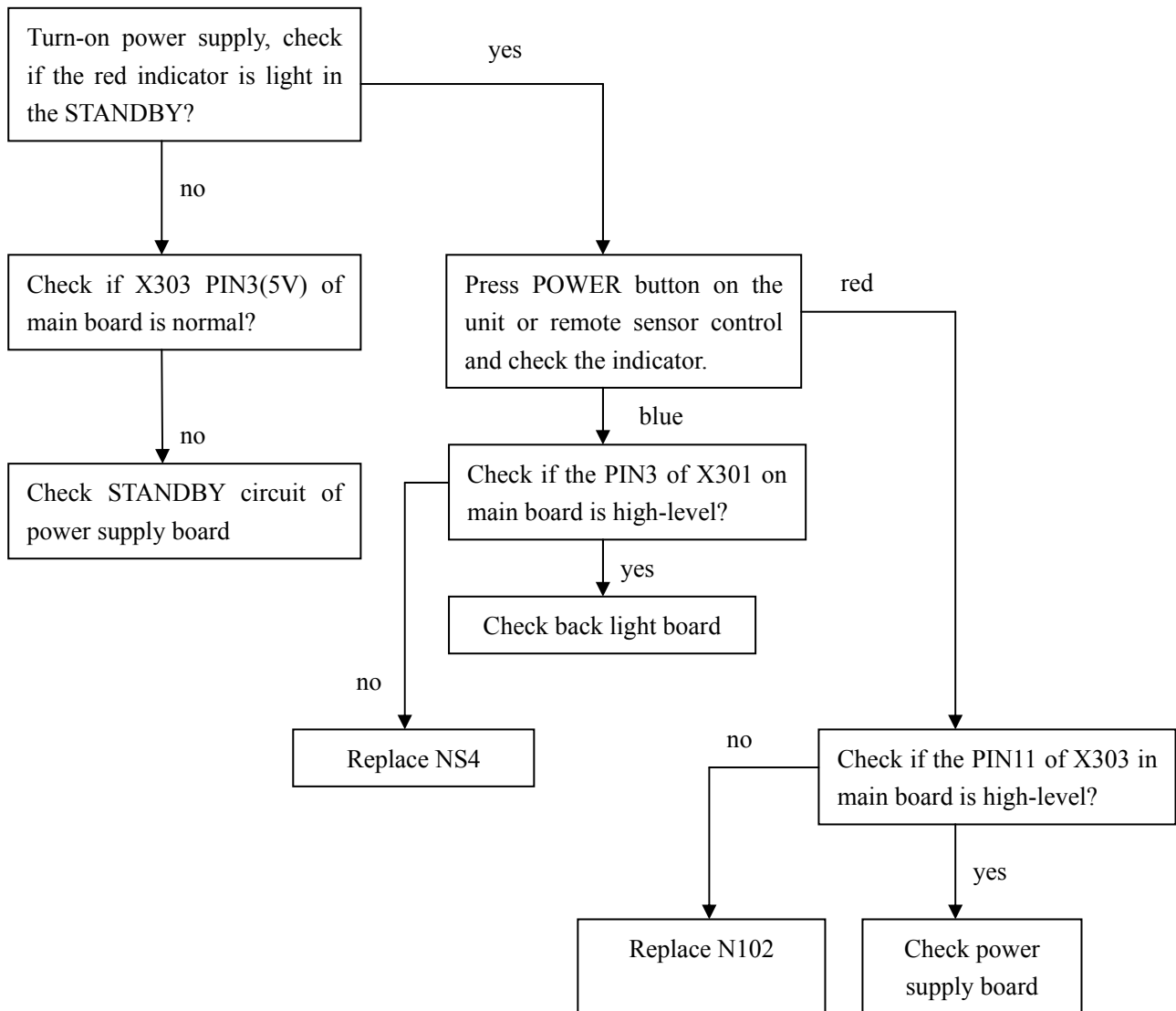
Category	Criteria	Quantity allowed					Distance between two spots				
		15"	20"	22"	30"	40"	15"	20"	22"	30"	40"
Bright spot	One single spot	≤5	≤2	≤5	≤2	≤3	≥15mm	≥15mm			
	Two neighboring spots	≤2	≤1	≤2	≤1	≤1					
	Total No.	≤5	≤2	≤5	≤2	≤3					
Dark spots	One single spot	≤6	≤7	≤5	≤4	≤10		≥10mm	≥5mm		
	Two neighboring spots	≤2	≤2	≤2	≤1	≤5					
	Total No.	≤6	≤7	≤5	≤4	≤10					
Total defected point		≤8	≤7	≤5	≤4	/					

Notes:

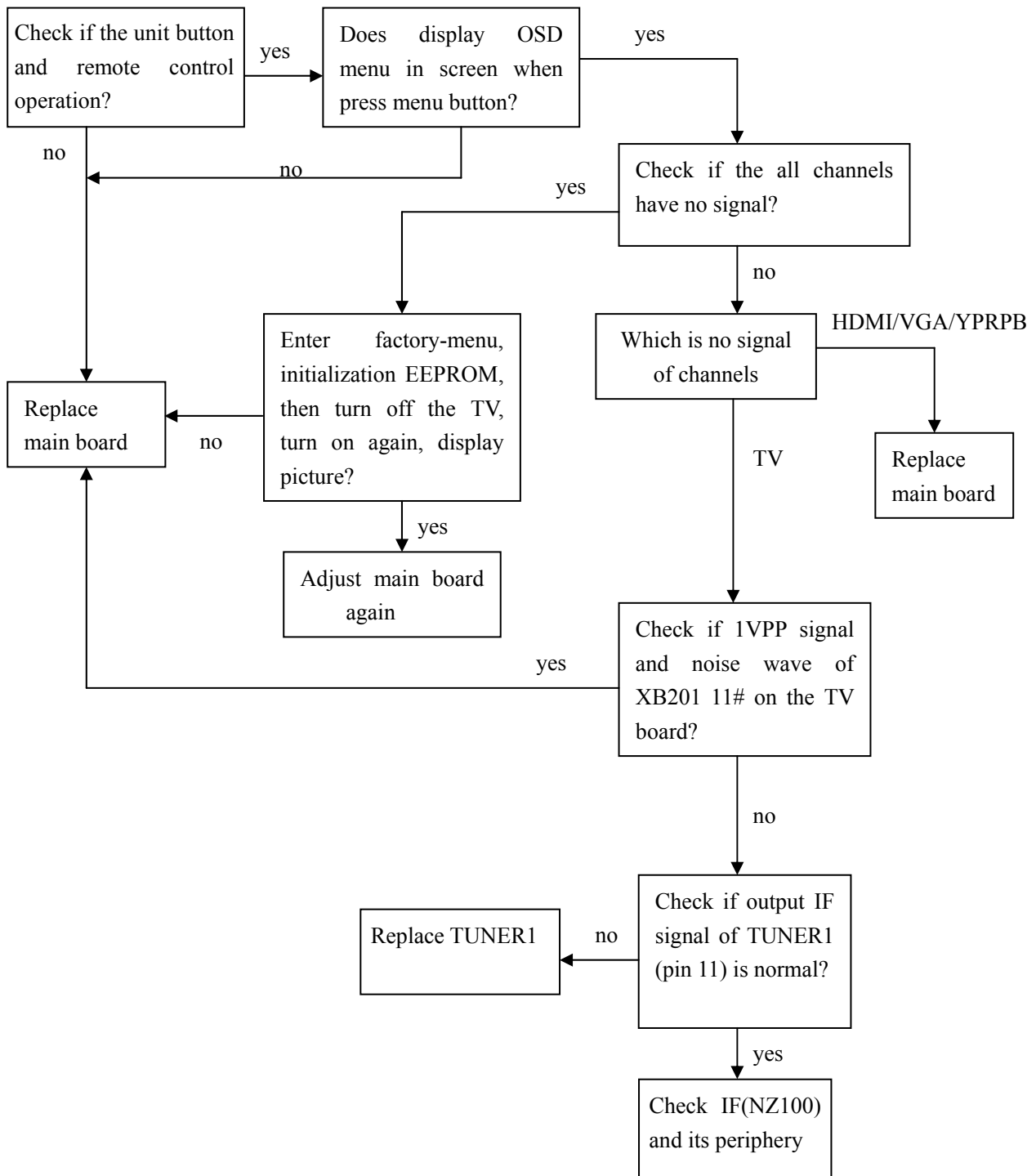
1. Definition of defected point (bright spot, dark spot): It is identified as a defected point if its area exceeds 1/2 of a single picture element (R, G, B).
2. Definition of bright spot: It is identified as a bright spot if it is bright in the state of dark field and its bright size remains unchanged
3. Definition of dark spot: It is identified as a dark spot if it is dark in the state of white field and its dark size remains unchanged
4. Definition of two neighboring points: Defects of a group of picture elements (RB, RG, GB).

3. Troubleshooting guide

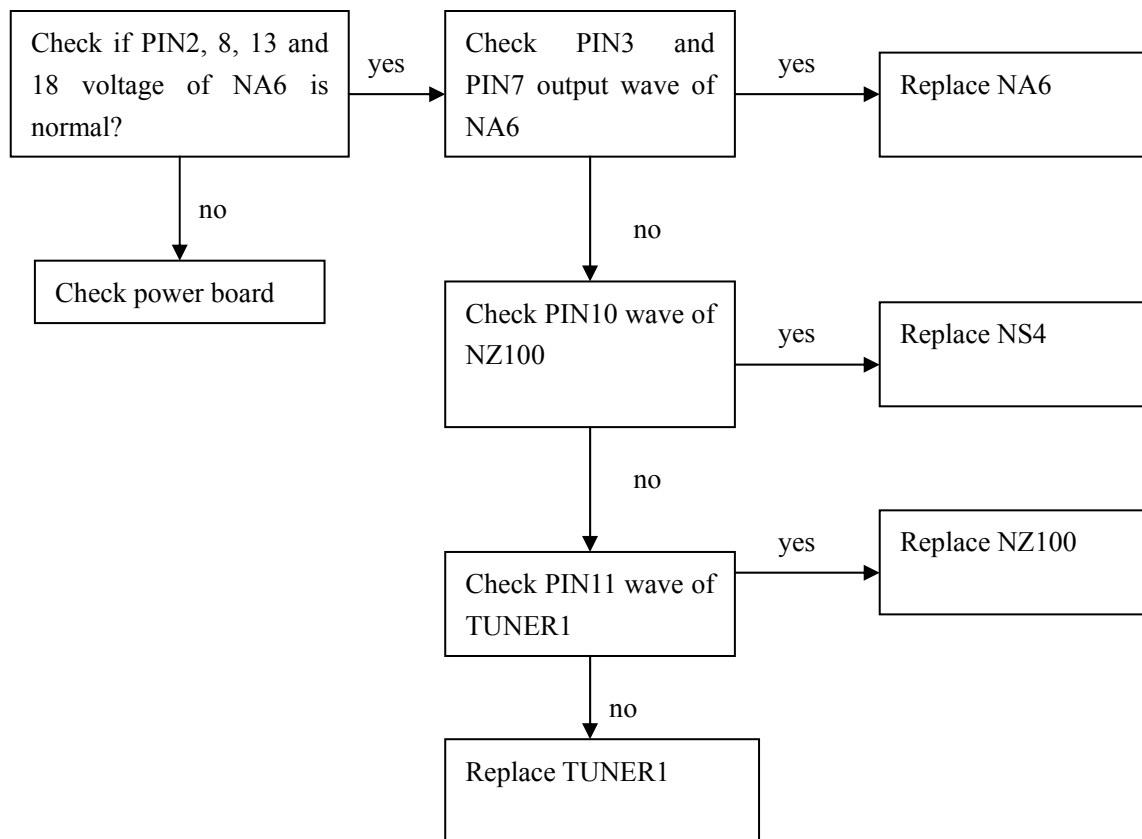
3.1. No raster

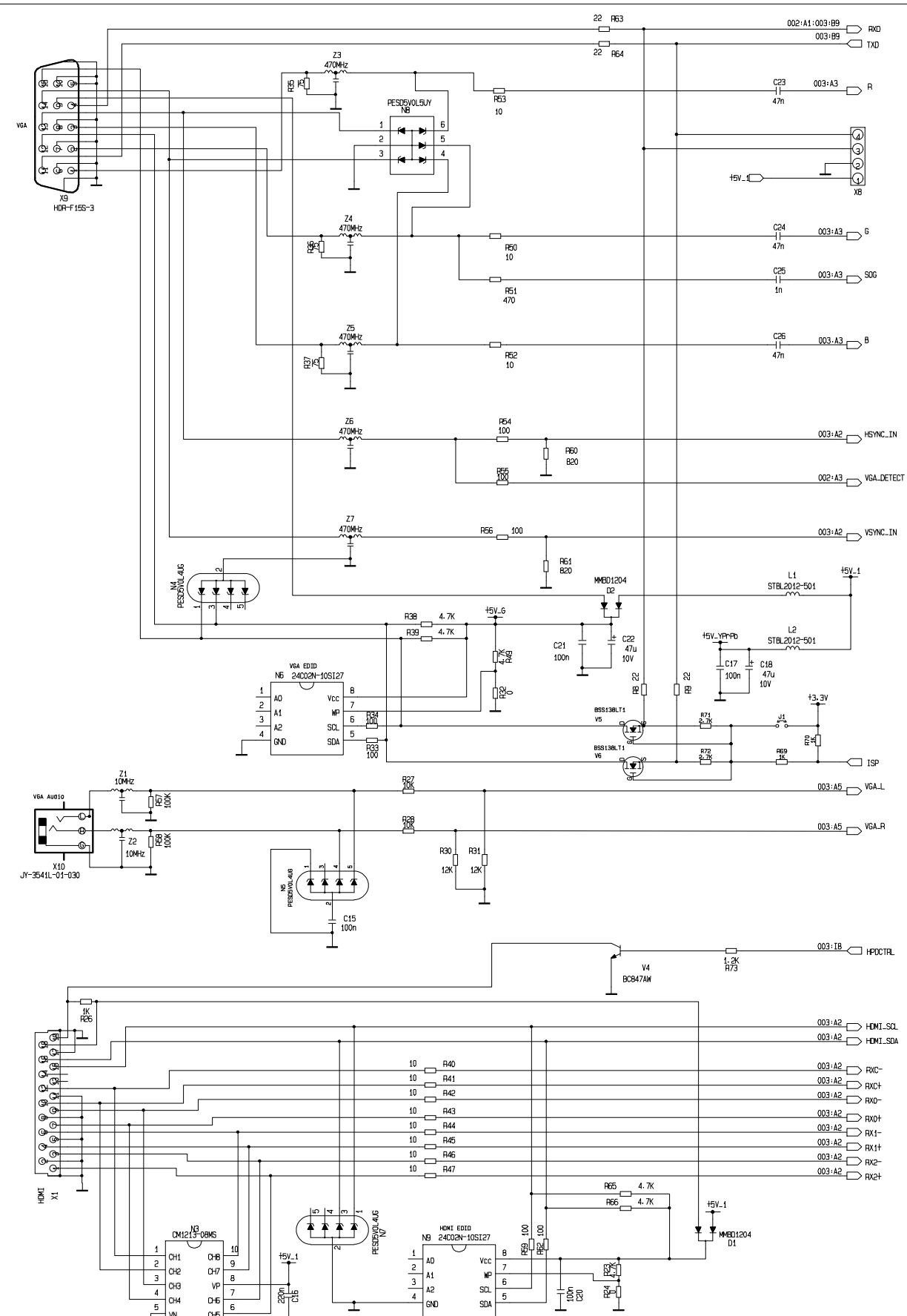


3.2. Raster, but no picture



3.3.no sound (TV input)

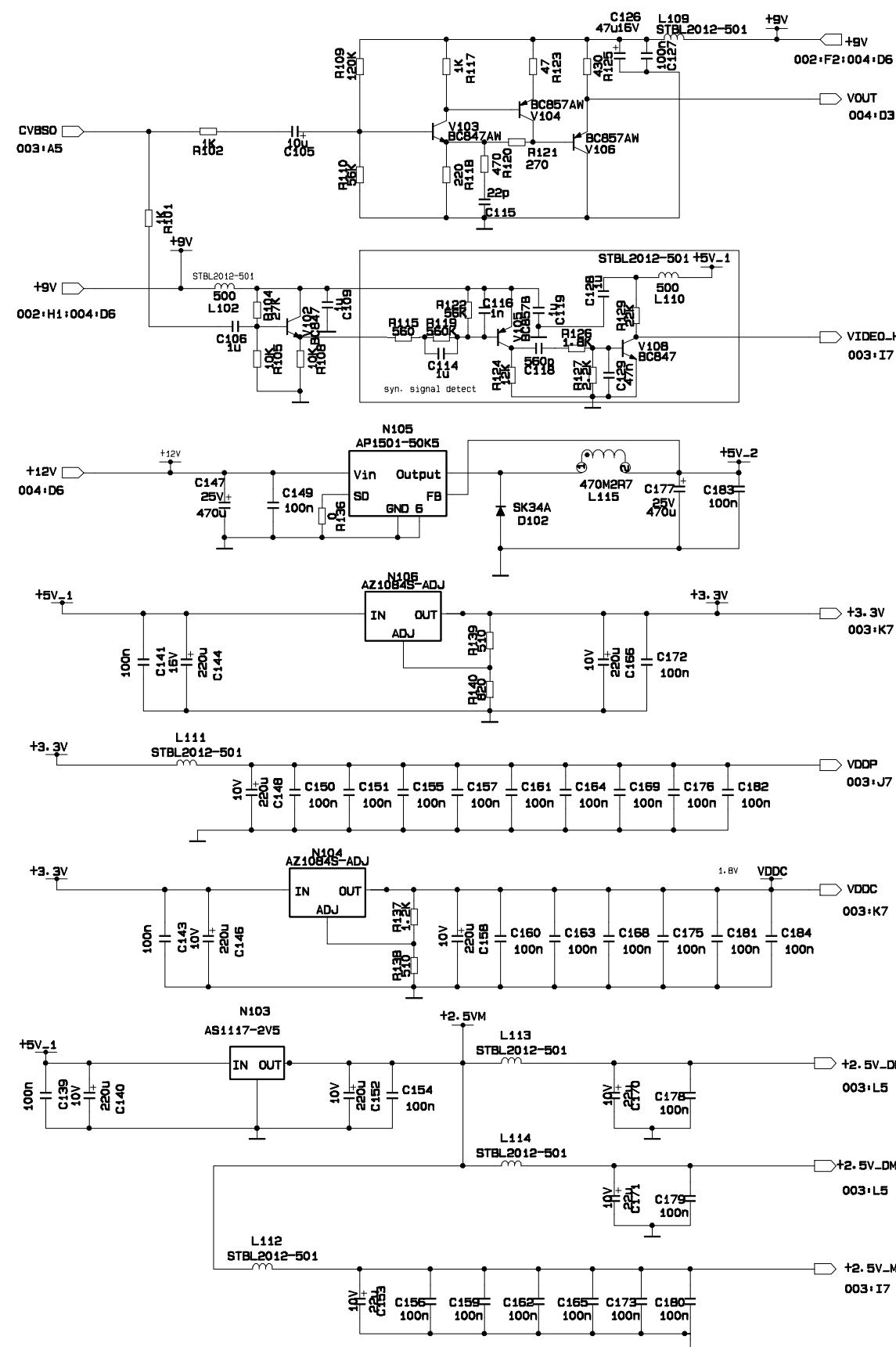




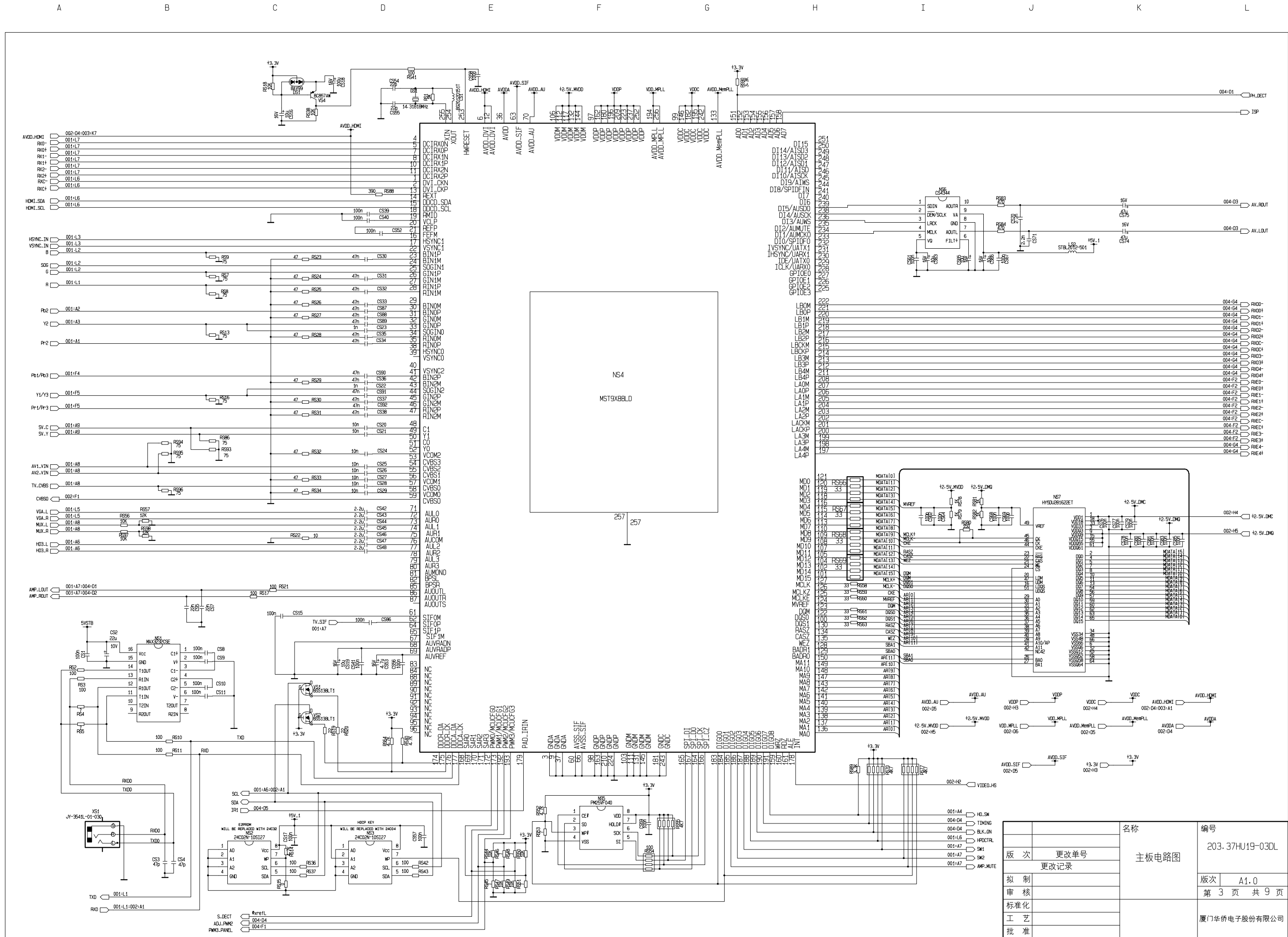
		名称 主板电路图	编号 203.37HU19-03DL	
版次	更改单号		版次	A1.0
更改记录			第 1 页 共 9 页	
拟制			厦门华侨电子股份有限公司	
审核				
标准化				
工艺				
批准				

3

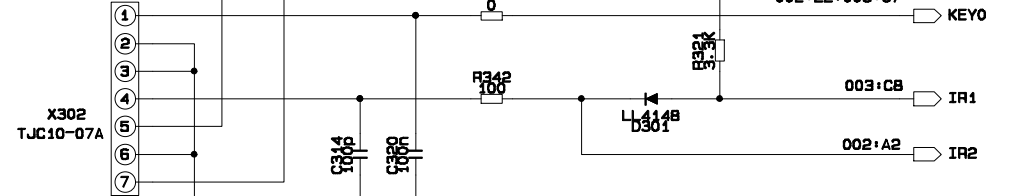
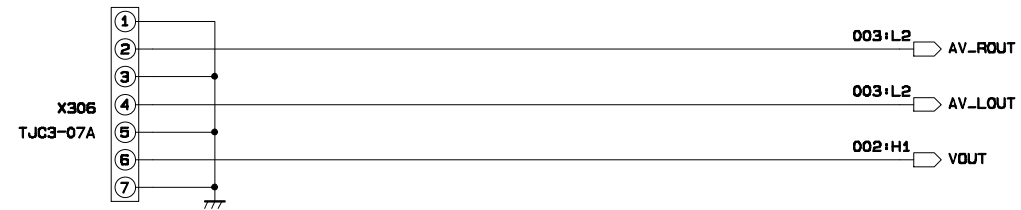
6



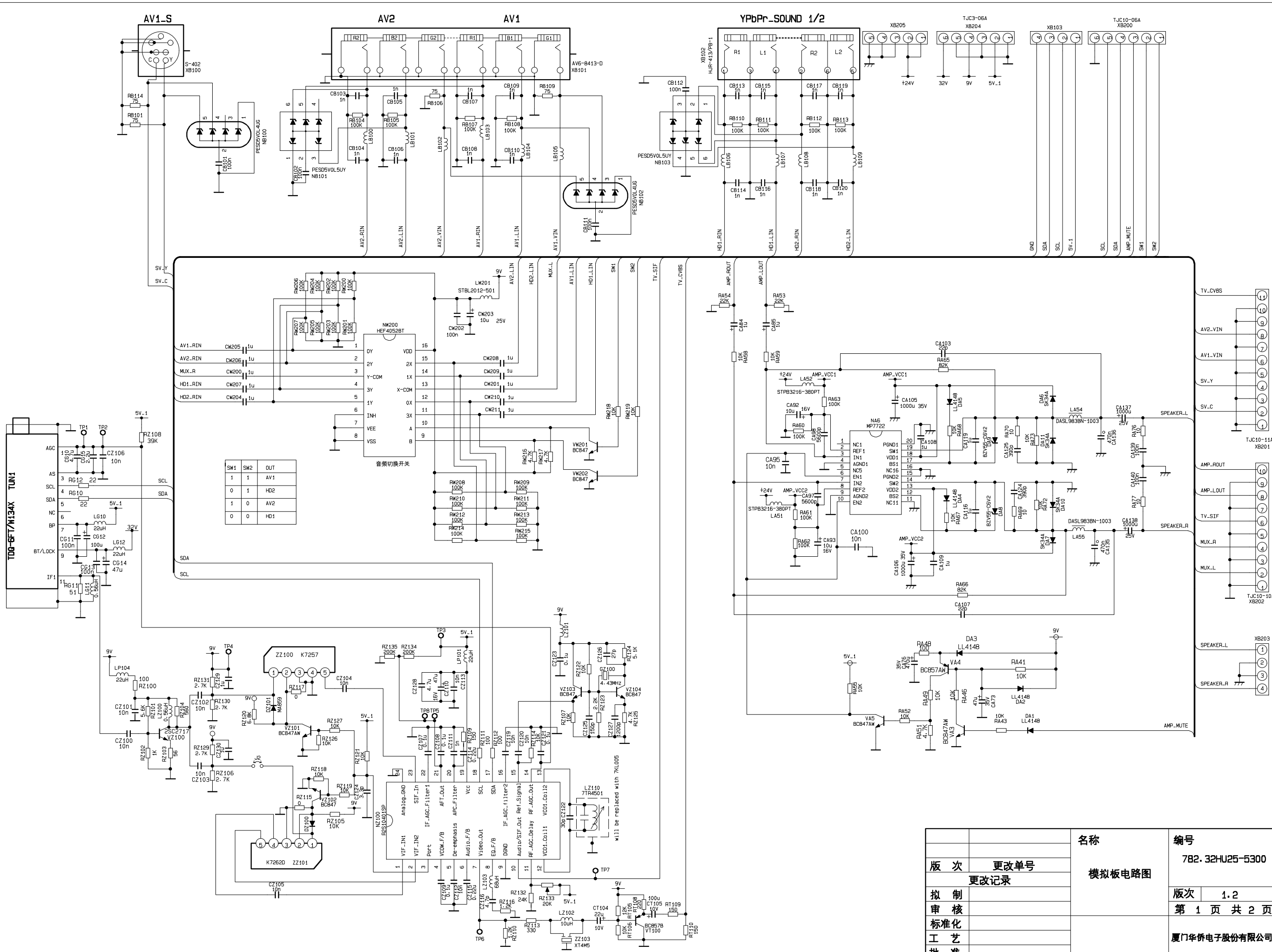
		名称	编号
			203. 37HU19-03D
版 次	更改单号	主板电路图	
	更改记录		
拟 制			版次 A1.0
审 核			第 2 页 共 9 页
标准 化			
工 艺			
批 准			厦门华侨电子股份有限公司



		名称 主板电路图	编号 203.37HU19-03DL	
版次	更改单号			
更改记录				
拟制			版次	A1.0
审核		第 3 页 共 9 页		
标准化				
工艺				
批准			厦门华侨电子股份有限公司	



		名称	编号	
			203. 37HU19-03DL	
版 次	更改单号	主板电路图		
更改记录				
拟 制			版次	A1.0
审 核			第 4 页 共 9 页	
标准化			厦门华侨电子股份有限公司	
工 艺				
批 准				

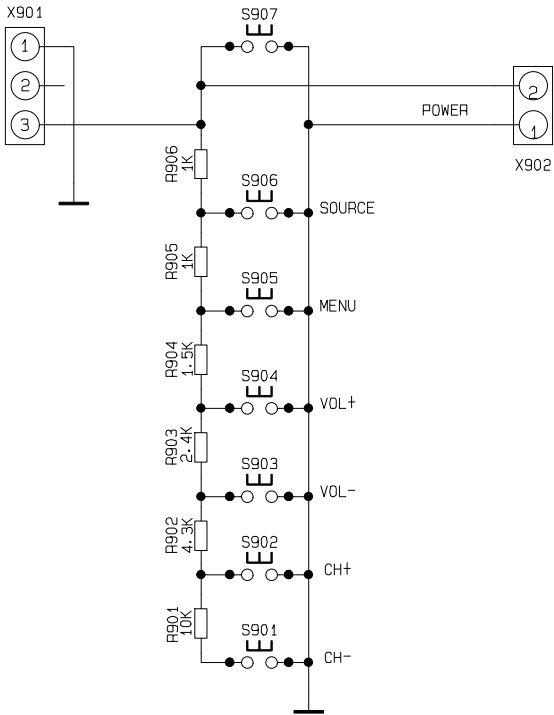


1

2

3

4



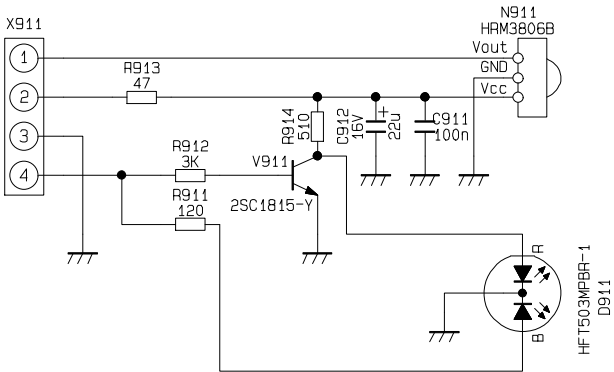
		名称 按键板电路图	编号 203.L37HU19-03DL	
版次	更改单号			
更改记录				
拟制			版次	A1.0
审核		第 7 页 共 9 页		
标准化			厦门华侨电子股份有限公司	
工艺				
批准				

1

2

3

4



		名称 红外接收板电路图	编号 203.L37HU19-03DL	
版 次	更改单号			
更改记录				
拟 制			版次	A1.0
审 核			第 8 页 共 9 页	
标准化			厦门华侨电子股份有限公司	
工 艺				
批 准				

1

2

3

4

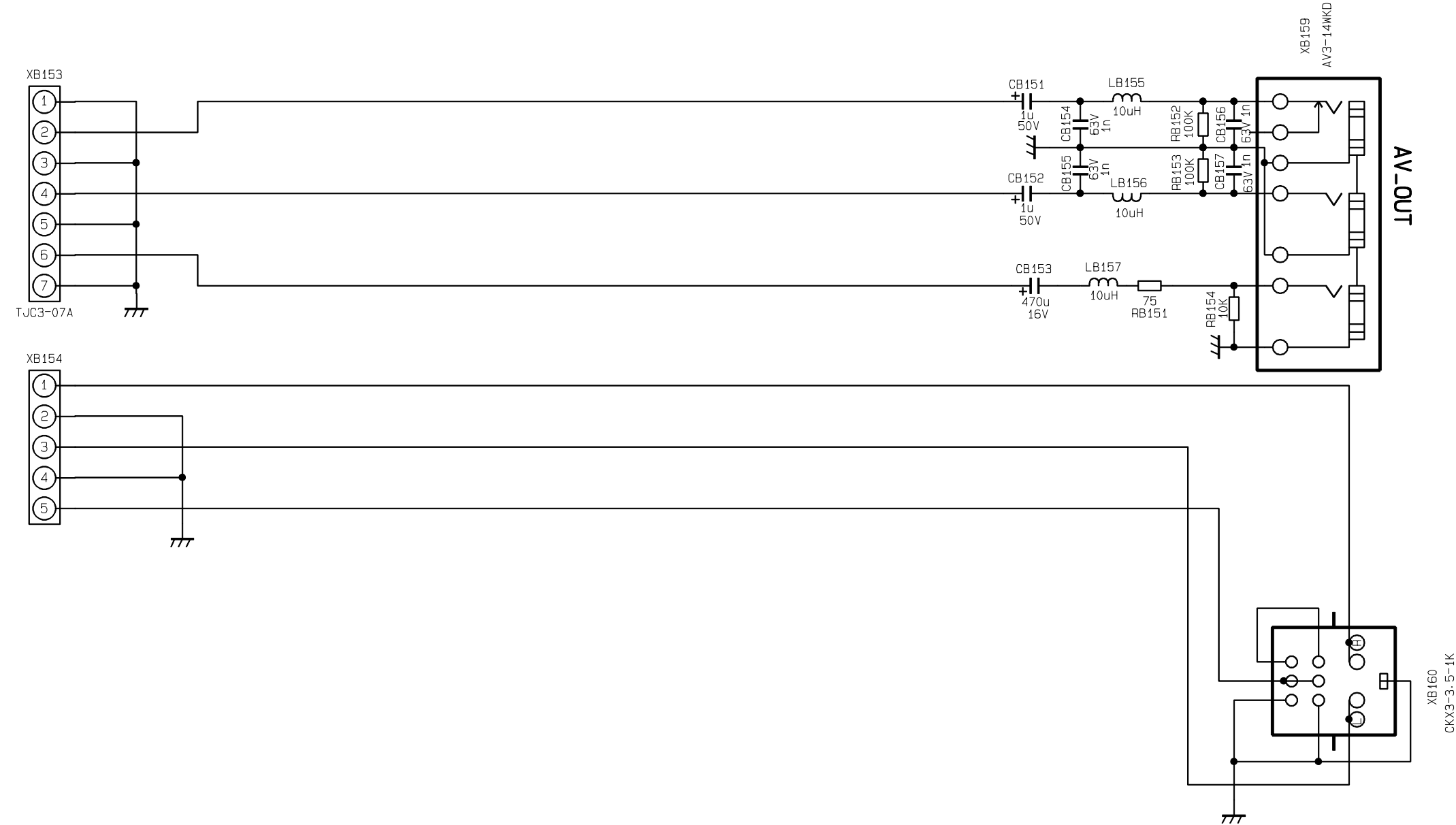
A

B

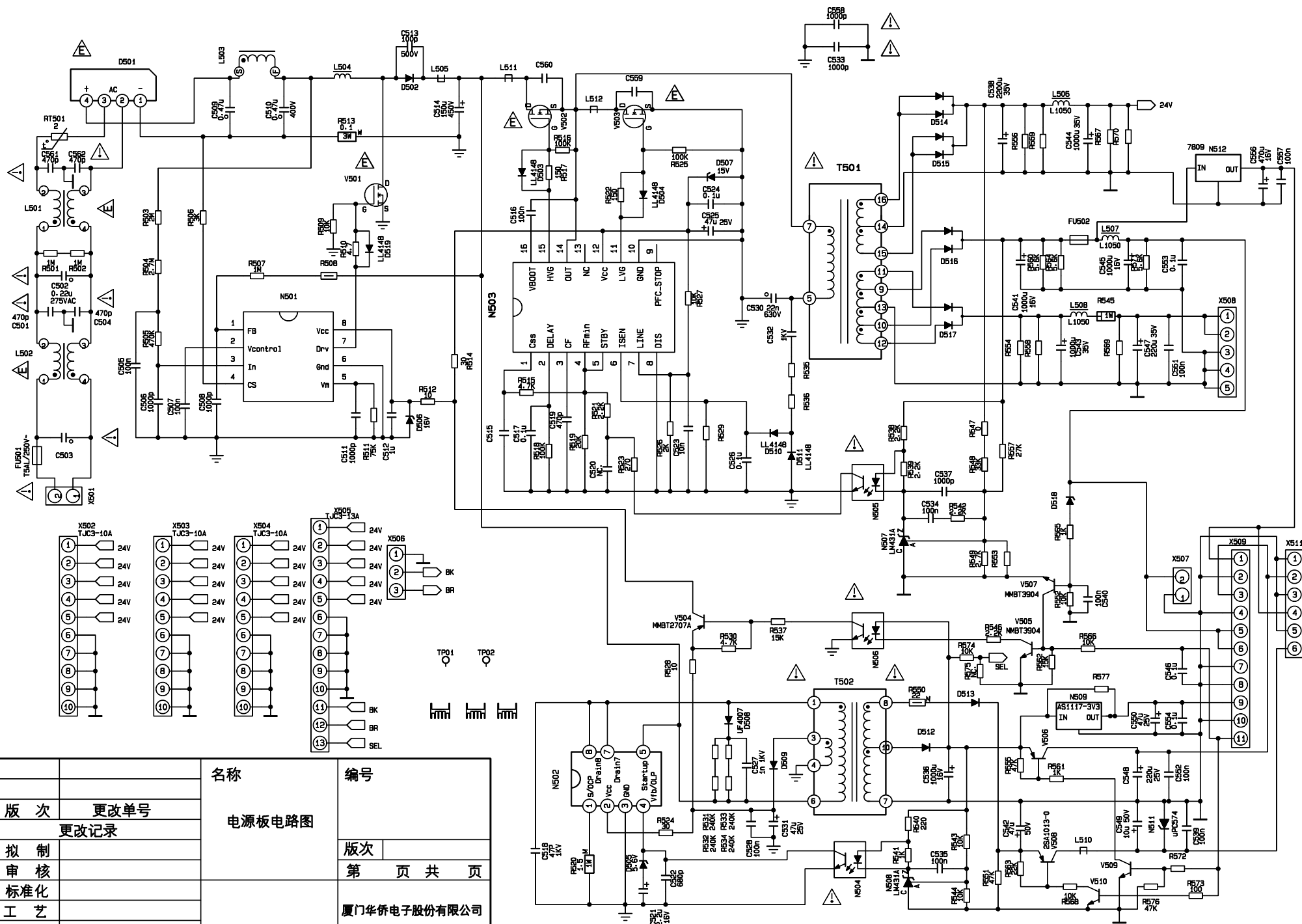
C

D

E



		名称 AV接口板电路图	编号 203.L37HU19-03DL	
版次	更改单号			
更改记录			版次	A1.0
拟制			第 9 页 共 9 页	
审核			厦门华侨电子股份有限公司	
标准化				
工艺				
批准				



APPENDIX-A: Main assembly

NAME	NO.	MAIN COMPONENT AND it'S NO.	
Analog board	667.37HU32D-53	NZ100 NA6	R2S10401 (353.10401-10) MP7722DF (353.77220-10)
Main board	667.YHU32-01D	NS4	MST9U88L (353.09880-10)
AV interface board	667.37HU19-29		
Keypad board	667.37HU19-05		
Stand-by board	667.37FC19-05A		
IR receiver board	667.37HU19-09		
Power board	667.37HU19-20		
Remote control	301.Y37HU32-46	RC-Y46	
Panel	335.37019-00	CLAA370WA03	

