

TEAC

SERVICE MANUAL

CD-X8/MC-DX20

MICRO Hi-Fi SYSTEM



NOTES

- PC board shown are viewed from parts side.
- The parts with no reference number or no parts number in the exploded views are not supplied.
- As regards the resistors and capacitors, refer to the circuit diagrams contained in this manual.
- ⚠ Parts marked with this sign are safety critical components. they must be replaced with identical components - refer to the appropriate parts list and ensure exact replacement.
- Parts of [] mark can be used only with the version designated.
[T/C]: USA/CANADA - CD-X8/MC-DX20B
[EX/M]: S. AMERICA - MC-DX20S

CONTENTS

| | |
|---------------------------------------|----|
| 1 SAFETY INFORMATION | 2 |
| 2 SPECIFICATIONS | 3 |
| 3 ADJUSTMENT AND CHECKS | 4 |
| 4 EXPLODED VIEW AND PARTS LIST | 6 |
| 5 PC BOARDS AND PARTS LISTS | 11 |
| 6 WIRING DIAGRAM | 19 |
| 7 INCLUDED ACCESSORIES | 21 |

CD-X8/MC-DX20

1 SAFETY INFORMATION

SAFETY INFORMATION

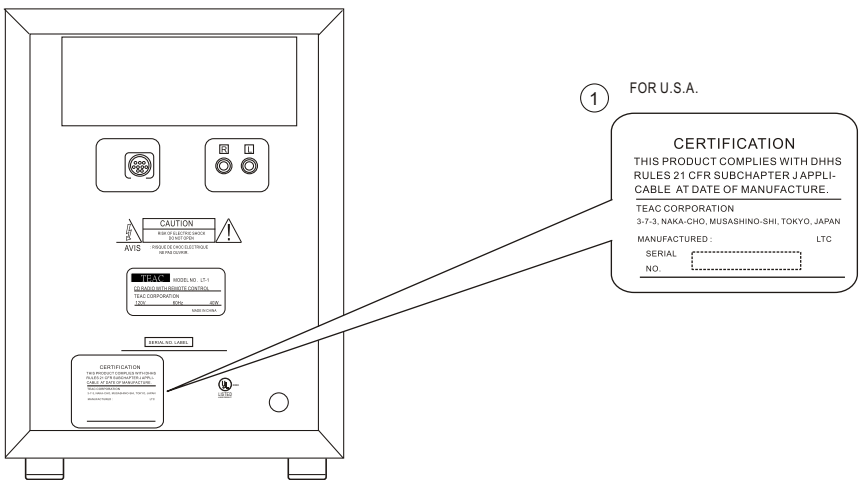
This product has been designed and manufactured according to FDA regulations "title 21, CFR, chapter 1, subchapter J, based on The Radiation Control for Health and Safety Act of 1968" and is classified as class 1 laser product. There is not hazardous invisible laser radiation during operation because invisible laser radiation emitted inside of this product is completely confined in the protective housings. The label required in this regulation is shown ①.

• **CAUTION**

USE OF CONTROLS OR ADJUSTMENT OR PERFORMANCE OF PROCEDURES OTHER THAN THOSE SPECIFIED HEREIN MAY RESULT IN HAZARDOUS RADIATION EXPOSURE.

DO NOT REMOVE THE PROTECTIVE HOUSING USING SCREWDRIVER.

IF THIS PRODUCT DEVELOPS TROUBLE, MAKE A CONTACT WITH OUR SERVICEMAN, AND DO NOT USE THE PRODUCT A TROUBLED STATE.



Optical pickup:

Type : CMS-M95BG6

Manufacturer : Samsung Electro-Mechanic

Laser output : Less than 0.5 mW on the objective lens

Wavelength : 760 -800 nm

2 SPECIFICATIONS

Amplifier Section

| | |
|-------------------------|-----------------|
| Output Power (L+R) | 5W + 5W |
| Output Power Subwoofer: | 15 W |
| Input Sensitivity | 300mV |
| Frequency Response : | 50 to 20,000 Hz |

Tuner Section (FM)

| | |
|-----------------------|-----------------------|
| Frequency Range | 87.5 MHz to 108.0 MHz |
| Sensitivity (S/N30dB) | 20dBuV/m |

Tuner Section (AM)

| | |
|-----------------------|-----------------|
| Frequency Range | 520 to 1710 kHz |
| Sensitivity (S/N20dB) | 54dBuV/m |

CD Player Section

| | |
|----------------------|--------------------------|
| Frequency Responce | 20 to 20,000 Hz (+/-1dB) |
| Signa-to-Noise Ratio | 55 dB |
| Wow and Flutter | Unmeasurable |

SPEAKER SYSTEM Section

| | |
|-----------------|----------------------|
| L & R speaker : | |
| Type : | Full range flat type |
| Impedance : | 4 ohms |
| Subwoofer: | |
| Impedance : | 8 ohms |

GENERAL

| | |
|---------------------|--|
| Power Requirements: | 120V AC, 60Hz - (USA/Canada model) 120/230V, AC,50-60 Hz (General export model) |
|---------------------|--|

| | |
|--------------------|------|
| Power Consumption: | 80 W |
|--------------------|------|

| | |
|------------------------|--|
| Dimension (W x H x D): | Main Unit 160 x 226 x 86 mm L & R Speaker 140 x 226 x 61mm Subwoofer 160 x 234 x 330mm |
|------------------------|--|

| | |
|---------------|---|
| Weight: (net) | Main Unit 0.96 kg L & R Speaker 0.6 kg(each) Subwoofer 5.3 kg |
|---------------|---|

| | |
|-----------------------|---|
| Standard Accessories: | Remote Control Unit (RC-962) x 1 Subwoofer Cable x 1 Speaker Cable x 2 FM Antenna x 1 AM Antenna x 1 Battery for Remote Control x 1 Wall Mount Adaptor x 3 Wall Mount screw x 10 Tape Plastic Wall Anchor x 10 Template for Wall Mounting x 1 Owner s Manual x 1 Warranty Card x 1 |
|-----------------------|---|

- Design and specifications are subject to change without notice.
- Illustrations may differ slightly from production models.
- Weight and dimensions are approximate.

CD-X8/MC-DX20

3 ADJUSTMENTS AND CHECKS

3-1 TUNER SECTION

- Use a screwdriver with a plastic or ceramic grip for all adjustment.

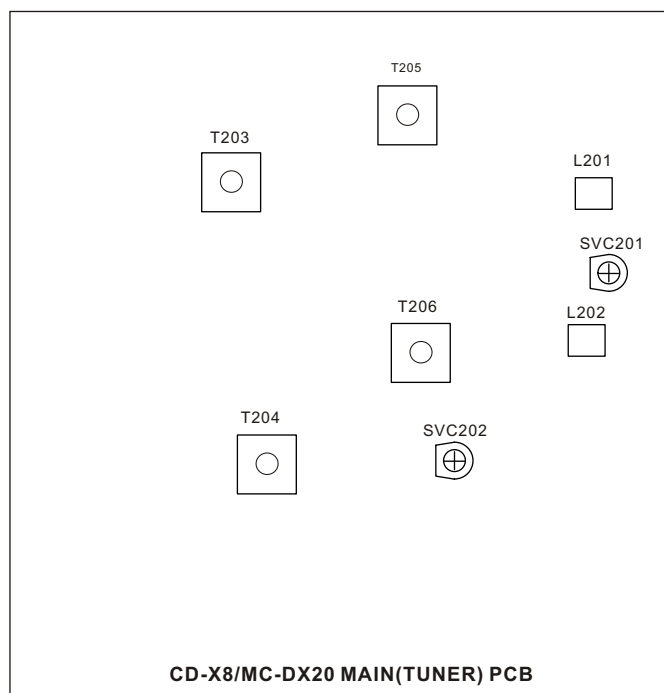
3-1-1 FM adjustment

1. Set the function switch to the FM position.
2. Connect the signal generator output through a 75 ohm dummy antenna to "ANT" on MAIN PCB.
3. Connect the oscilloscope to the speaker terminal.
4. Set the signal generator as listed in the alignment chart.

3-1-2 AM adjustment

1. Set the function switch to the AM position.
2. Connect the test loop antenna across the output of the signal generator.
3. Connect the oscilloscope to the speaker terminal.
4. Set the signal generator as listed in the alignment chart.

3-2 Adjustment and Test Points



3-2-1 FM/AM alignment chart

| ITEM | SG SETTING | TUNER SETTING | ADJUSTMENT POINT | ADJUSTMENT |
|------------------|-----------------------------------|---------------|--------------------|---|
| FM | | | | |
| 1.IFT adjustment | 10.7 MHz 1kHz, +/-22.5kHz dev. | 108MHz | T205 | With 10.7 MHz at zero crossover |
| 2. FM band | 87.5MHz 1kHz, +/-22.5kHz dev. | 87.5MHz | L202 | Adjust for max. output and best waveform. |
| 3. Tracking | 90MHz 1kHz, +/-22.5kHz dev. | 90MHz | L201 | |
| | 106MHz 1kHz, +/-22.5kHz dev. | 106MHz | SVC201 | |
| | Repeat step 3 | | | |
| AM | | | | |
| 1. IF adjustment | 455kHz 1kHz, 30% mod | 1710kHz | T203 | Center for max. output. |
| 2. AM band | 520kHz 1kHz, 30% mod | 520kHz | T206 | Adjust for max. output and best waveform. |
| 3. Tracking | 600kHz 1kHz, 30% mod | 600kHz | AM ant coil (T204) | |
| | 1400kHz 1kHz, 30% mod | 1400kHz | SVC202 | |
| | Repeat step 3 | | | |

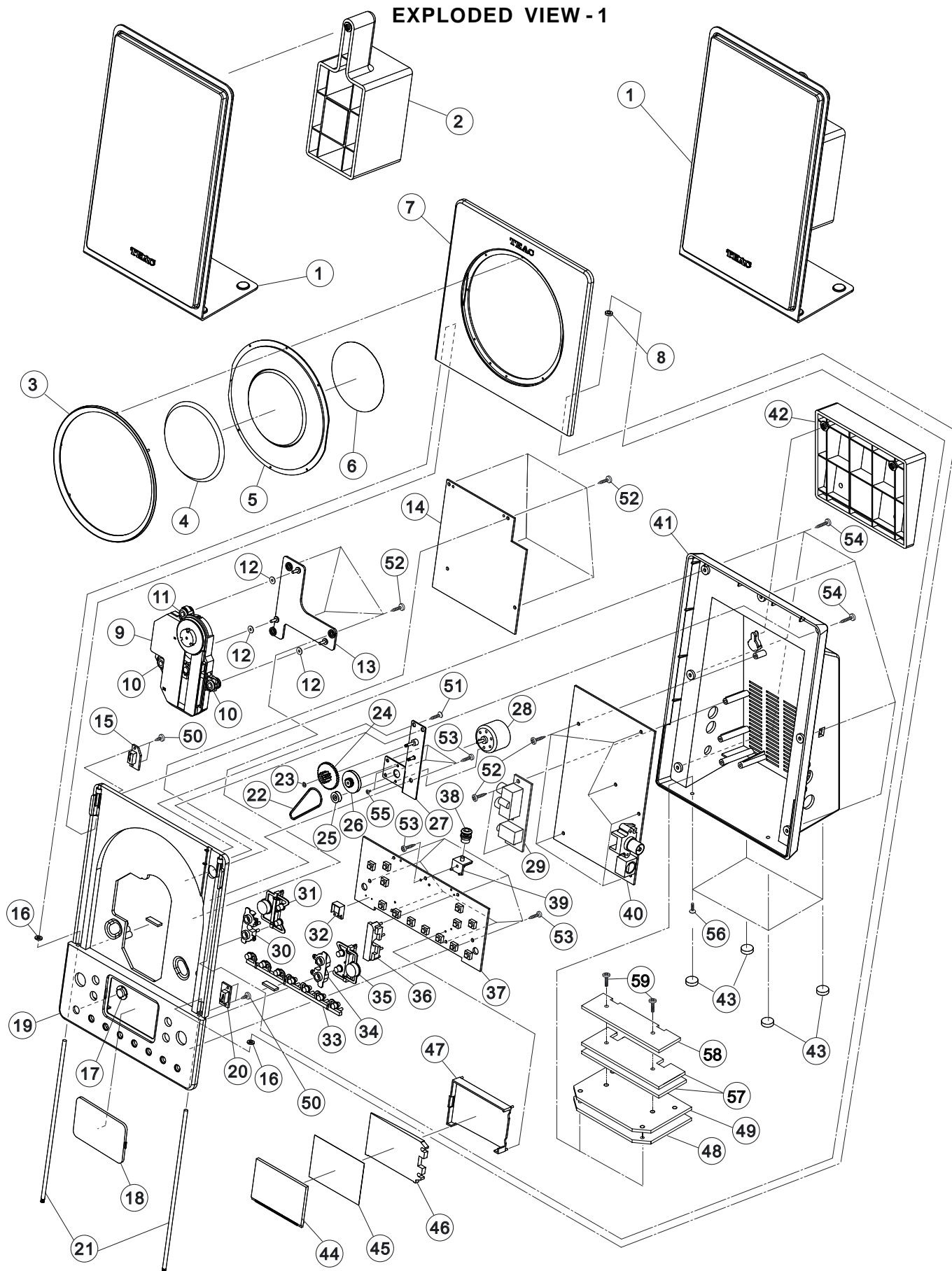
3-3 CD SECTION

Auto alignment.

CD-X8/MC-DX20

4 EXPLODED VIEWS AND PARTS LIST

EXPLODED VIEW - 1



CD-X8/MC-DX20

EXPLODED VIEW-1

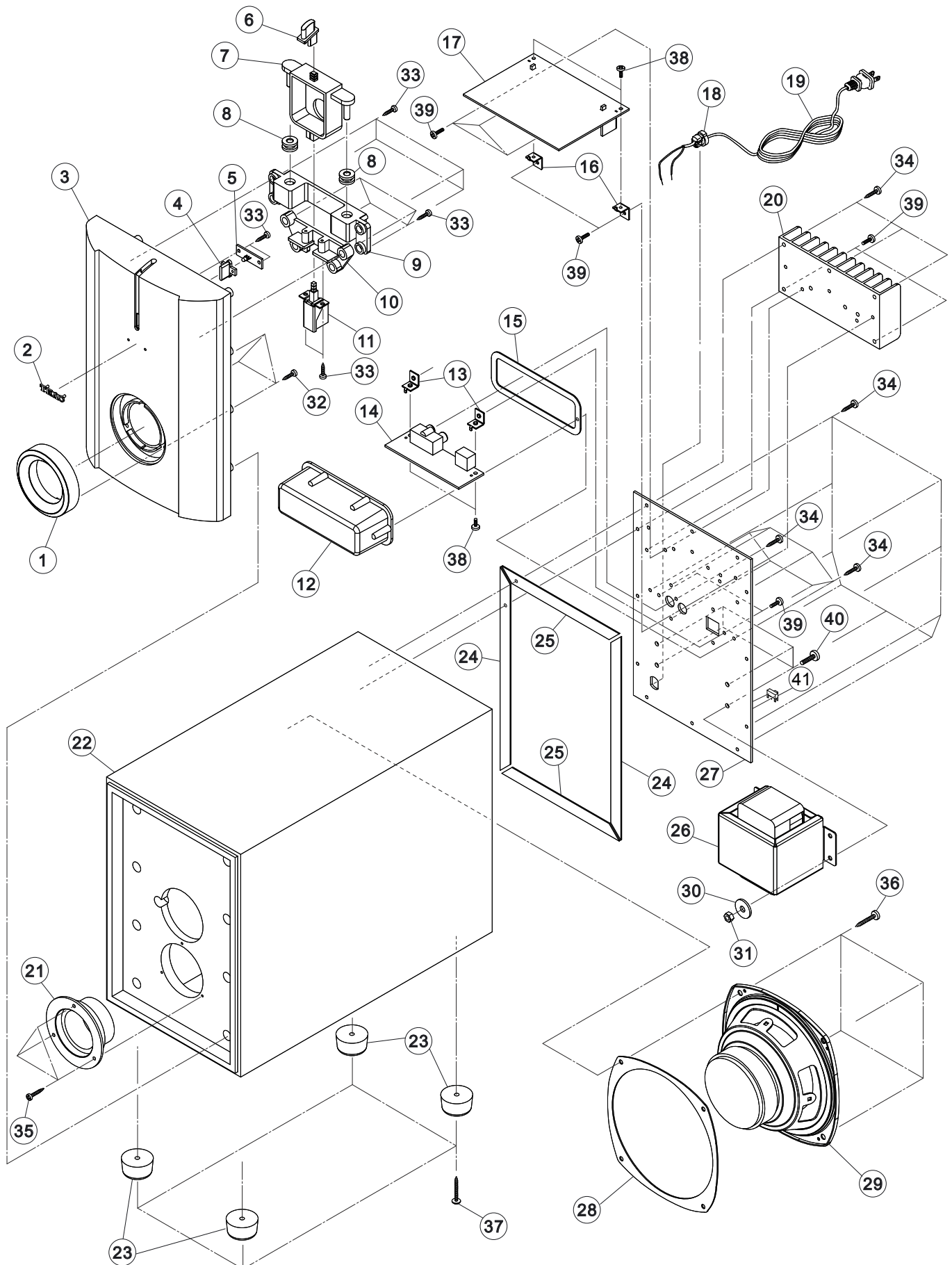
| REF. NO | PARTS NO. | DESCRIPTION | REMARKS |
|---------|-----------------|------------------------------------|---------|
| 1-1 | 19-50DX01500001 | SPEAKER BOX ASSY (CD-DX8) | |
| | 19-50DX01500020 | SPEAKER BOX ASSY (MC-DX20B) [T/C] | |
| | 19-50DX01500030 | SPEAKER BOX ASSY (MC-DX20S) [EX/M] | |
| 1-2 | 56-07DX0155A000 | FULL WALL PLATE-SPEAKER - (SILVER) | |
| | 56-07DX0155B000 | FULL WALL PLATE-SPEAKER - (BLACK) | |
| 1-3 | 56-78DX0151G000 | CD DOOR CHROME RING | |
| 1-4 | 61-68DX01500020 | CD ALUM COVE DIA 68MM | |
| 1-5 | 56-57DX01510000 | CD DOOR LENS | |
| 1-6 | 57-08DX01500020 | CD DOOR PVC PLATE | |
| 1-7 | 56-14DX0150A010 | CD DOOR - (CD-X8) | |
| | 56-14DX0150B010 | CD DOOR - (MC-DX20B) [T/C] | |
| | 56-14DX0150A020 | CD DOOR - (MC-DX20S) [EX/M] | |
| 1-8 | 58-58DX01500620 | RUBBER RING D5.4X3X1.5MM | |
| 1-9 | 20-70CMSM95B00 | CD MECH. (SAMSUNG) CMS-M95BG6 | |
| 1-10 | 58-61MC23500020 | SHOCK ABSORBER (GREY) AC112-SI-20C | |
| 1-11 | 58-61MC23500120 | SHOCK ABSORBER- BLACK | |
| 1-12 | 68-122301600400 | FIBRE WASHER 3X6X0.4MM | |
| 1-13 | 56-07DX01539000 | CD BRACKET | |
| 1-14 | 05-30DX01500000 | CD(MP3) PCB ASSY (CD-X8) | |
| | 05-30DX01510000 | CD(MP3) PCB ASSY (MC-DX20) | |
| 1-15 | 48-23DX0150022A | CLOSE SW PCB ASSY | |
| 1-16 | 58-58DX01500420 | RUBBER RING D5.4X3X1MM | |
| 1-17 | 56-57DX01532000 | REMOTE LENS | |
| 1-18 | 56-57DX01540010 | DISPLAY LENS | |
| 1-19 | 56-04DX0150A010 | FRONT CABINET - (CD-X8) | |
| | 56-04DX0150B010 | FRONT CABINET - (MC-DX20B) [T/C] | |
| | 56-04DX0150A020 | FRONT CABINET - (MC-DX20S) [EX/M] | |
| 1-20 | 48-23DX01500220 | OPEN SW PCB ASSY | |
| 1-21 | 61-80DX01500020 | FERRM SHAFT 155X3MM | |
| 1-22 | 58-43DX01500020 | DRIVE BELT DIA 31X1MM | |
| 1-23 | 68-152402160300 | PVC WASHER D4X1.6X0.3MM | |
| 1-24 | 56-24DX01510000 | STRAP GEAR | |
| 1-25 | 56-760000000020 | DOOR MOTOR PULLY | |
| 1-26 | 56-24DX01500000 | CD DOOR GEAR | |
| 1-27 | 61-11DX01500320 | MOTOR BRACKET | |
| 1-28 | 58-44DX01500020 | MOTOR 3V | |
| 1-29 | 05-09DX01500000 | HP/AUX JACK PCB ASSY | |
| 1-30 | 56-57DX01559000 | KNOB RING-L | |
| 1-31 | 56-54DX0151A010 | POWER KNOB-UNIT (SILVER) | |
| | 56-54DX0151B010 | POWER KNOB-UNIT (BLACK) | |
| 1-32 | 56-07DX01569000 | REMOTE BRACKET | |
| 1-33 | 56-53DX0151A000 | CD KNOB GROUP (SILVER) | |
| | 56-53DX0151B000 | CD KNOB GROUP (BLACK) | |
| 1-34 | 56-57DX01569000 | KNOB RING-R | |
| 1-35 | 56-53DX0150A010 | CD DOOR OPEN KNOB (SILVER) | |
| | 56-53DX0150B010 | CD DOOR OPEN KNOB (BLACK) | |
| 1-36 | 56-22DX0151B000 | LASER COVER | |
| 1-37 | 05-05DX01500000 | KEY/DISPLAY PCB ASSY | |
| 1-38 | 58-61EX0M108120 | SHOCK ABSORBER - GREY | |
| 1-39 | 56-07DX01589000 | RUBBER HOLDER | |
| 1-40 | 05-01DX01500000 | MAIN(TUNER) PCB ASSY | |
| 1-41 | 56-05DX0150A020 | REAR CABINET (SILVER) | |
| | 56-05DX0150B010 | REAR CABINET (BLACK) | |

CD-X8/MC-DX20

EXPLODED VIEW-1

| REF. NO | PARTS NO. | DESCRIPTION | REMARKS |
|---------|-----------------|---|---------|
| 1-42 | 56-07DX0154A000 | FULL WALL PLATE - UNIT (SILVER) | |
| | 56-07DX0154B000 | FULL WALL PLATE - UNIT (BLACK) | |
| 1-43 | 58-263102300520 | RUBBER FOOT | |
| 1-44 | 13-05DX01500020 | LCD DISPLAY | |
| 1-45 | 57-262392590020 | FILTER SHEET | |
| 1-46 | 56-57DX01520000 | BACK LIGHT LENS-UNIT | |
| 1-47 | 56-07DX01579000 | DISPLAY BRACKET | |
| 1-48 | 61-11DX01500121 | FERRM PLATE - HOLE (LOWER SIDE) | |
| 1-49 | 61-11DX01500021 | FERRM PLATE - SCREW HOLE (UPPER SIDE) | |
| 1-50 | 66-140220160321 | SCREW TA/BH 2X6MM | |
| 1-51 | 66-140526210321 | SCREW TA/KH 2.6X10MM | |
| 1-52 | 66-140226180321 | SCREW TA/BH 2.6X8MM | |
| 1-53 | 66-140226180321 | SCREW TA/PH 2.6X8MM | |
| 1-54 | 66-140226210321 | SCREW TA/BH 2.6X10MM | |
| 1-55 | 66-120320130321 | SCREW MS/PH 2X3MM | |
| 1-56 | 66-120526160321 | SCREW MS/KH 2.6X6MM | |
| 1-57 | 66-11DX01500420 | FERRM PLATE (C) 33X108X2MM (LOWER SIDE) | |
| 1-58 | 66-11DX01500520 | FERRM PLATE (D) 27X108X2MM (UPPER SIDE) | |
| 1-59 | 66-120226210321 | SCREW MS/BH 2.6X10MM | |

EXPLODED VIEW 2



CD-X8/MC-DX20

EXPLODED VIEW-2

| REF. NO | PARTS NO. | DESCRIPTION | REMARKS |
|---------|------------------|--|---------|
| 2-1 | 56-78DX0150G000 | CHROME RING-SUBWOOFER BOX | |
| 2-2 | 56-58EX0M118000 | BADGE LOGO (3M01241801A) | |
| | 56-58EX0M500010 | BADGE LOGO (M01241802A) | |
| 2-3 | 56-85DX0150A010 | SUBWOOFER PANEL - SILVER | |
| | 56-85DX0150B010 | SUBWOOFER PANEL - BLACK | |
| 2-4 | 56-57DX01509000 | LIGHT LENS-SUBWOOFER BOX | |
| 2-5 | 48-16DX01500220 | LED PCB | |
| 2-6 | 56-54DX0150A000 | POWER KNOB-SUBWOOFER BOX | |
| 2-7 | 56-07DX01508000 | BRACKET A-SUBWOOFER BOX | |
| 2-8 | 58-58V820000020 | WOOFER RUBBER | |
| 2-9 | 56-07DX01518000 | BRACKET B-SUBWOOFER BOX | |
| 2-10 | 56-07DX01528000 | BRACKET C-SUBWOOFER BOX | |
| 2-11 | 41-193220000010 | POWER SWITCH | |
| 2-12 | 56-22DX01508000 | PCB COVER | |
| 2-13 | 61-11V820010020 | PCB FIX BRACKET | |
| 2-14 | 05-08DX01500000 | RCA/D-S JACK PCB ASSY | |
| 2-15 | 58-58DX01500320 | CUSHION 106X40X1MM | |
| 2-16 | 61-11V6000000020 | PCB BRACKET | |
| 2-17 | 05-07DX01500000 | SUBWOOFER POWER PCB ASSY - [T/C] | |
| | 05-07DX01500001 | SUBWOOFER POWER PCB ASSY - [EX/M] | |
| 2-18 | 43-500000002020 | AC CORD BUSHING | |
| 2-19 | 45-114180310061 | AC LINE CORD CULAPP | |
| 2-20 | 61-48DX01500020 | HEAT SINK - A | |
| 2-21 | 56-87DX0150B010 | PLASTIC TUBE | |
| 2-22 | 58-73DX01500020 | SUBWOOFER BOX - SILVER | |
| | 58-73DX01500120 | SUBWOOFER BOX - BLACK | |
| 2-23 | 58-263253150020 | RUBBER FOOT | |
| 2-24 | 58-58DX01500120 | CUSHION - LONG | |
| 2-25 | 58-58DX01500220 | CUSHION - SHORT | |
| 2-26 | 18-203DX0150120 | TRANSFORMER E166 120V [T/C] | |
| | 18-208DX0150120 | TRANSFORMER E166 120/230V [EX/M] | |
| 2-27 | 61-33DX01500021 | SUBWOOFER REAR PANEL (CD-X8) | |
| | 61-33DX01500520 | SUBWOOFER REAR PANEL (MC-DX20B) [T/C] | |
| | 61-33DX01500320 | SUBWOOFER REAR PANEL (MC-DX20S) [EX/M] | |
| 2-28 | 58-58DX01500520 | CUSHION SPEAKER | |
| 2-29 | 19-033153300120 | SUBWOOFER 5.25 -INCHES 30W | |
| 2-30 | 68-112403101000 | METAL WASHER 4X10X1MM | |
| 2-31 | 67-021400000020 | NUT M4MM | |
| 2-32 | 66-140226210321 | SCREW TA/BH 2.6X10MM | |
| 2-33 | 66-140230210321 | SCREW TA/BH 3X10MM | |
| 2-34 | 66-140230212321 | SCREW TA/BH 3X12MM | |
| 2-35 | 66-140230212321 | SCREW TA/BH 3X12MM | |
| 2-36 | 66-141136216121 | SCREW TA/PH 3.6X16MM | |
| 2-37 | 66-141430220121 | SCREW TA/BWH 3X20MM | |
| 2-38 | 66-120230160121 | SCREW MS/BH 3X6MM | |
| 2-39 | 66-150230180123 | HARDEN SCREW BT/TB 3X8MM | |
| 2-40 | 66-120240212121 | SCREW MS/BH 4X12MM | |
| 2-41 | 41-171512000010 | VOLTAGE SELECTOR SL-15-12AJC31A | |

CD-X8/MC-DX20

5 PC BOARDS AND PARTS LIST

MAIN (TUNER)PCB ASSY

| REF. NO | PARTS NO. | DESCRIPTION | REMARKS |
|----------------------------------|-----------------|------------------------|---------|
| | 05-01DX01500000 | MAIN(TUNER) PCB ASSY | |
| | 48-01DX01500221 | MAIN(TUNER) PCB | |
| CF201 | 31-028107000120 | FILTER LT10.7MA5 | |
| CF203 | 31-026450010110 | FILTER SFU450B | |
| CF205 | 31-038107020110 | FILTER CDA10.7MG46-A | |
| CF206 | 31-046456000220 | RESONATOR ZTB456F15 | |
| CN201 | 43-012200160120 | WAFER 2MM 6PIN | |
| CN203 | 43-022250120120 | WAFER 2.5MM 2PIN | |
| CN501,505A,702 | 43-012200130120 | WAFER 2MM 3 PIN | |
| CN1 | 43-462103003120 | D-S TERMINAL #DSW-07 | |
| CN505B | 43-012200140120 | WAFER 2MM 4 PIN | |
| CN503 | 43-012200150120 | WAFER 2MM 5 PIN | |
| CN504 | 43-012200180120 | WAFER 2MM 8 PIN | |
| D8 | 12-1N5822000021 | RECTIFIER DIODE 1N5822 | |
| D201,202,705 | 12-1N4148000021 | DIODE 1N4148 | |
| D708 | 12-1N4001000021 | DIODE 1N4001 | |
| IC201 | 16-TA8176SN0021 | IC - TA8176SN | |
| IC202 | 16-LA1832000021 | IC - LA1832 | |
| IC203 | 16-LC7213100021 | IC - LC72131 | |
| IC501 | 16-LC7534200021 | IC - LC75342 | |
| IC702 | 16-MC34063A0021 | IC - MC34063A | |
| IC703 | 16-SC1308000021 | IC - SC1308-01 | |
| L201,203 | 40-351500135020 | FM COIL 5X3.5TX0.8MM | |
| L202 | 40-351500125020 | FM COIL 5X2.5TX0.8MM | |
| L204 | 38-014100050020 | AXIAL INDUCTOR 100UH | |
| L404,406 | 38-013100050220 | AXIAL INDUCTOR 10UH | |
| L701 | 38-104230050020 | CHOKO COIL 230UH | |
| L702 | 38-103200050020 | CHOKO COIL 20UH | |
| Q201-203,501,502,11-9014C0000021 | | TR - 9014C | |
| Q705,706,715 | | | |
| Q204,701 | 11-9015C0000021 | TR - 9015C | |
| Q401,703,716 | 11-8050C0000021 | TR - 8050C | |
| Q702 | 16-LM78L05A0021 | IC - LM78L05A | |
| Q704 | 11-KSB772YS0021 | TR - KSB772SY | |
| Q712,713 | 11-8550C0000021 | TR - 8550C | |
| SVC201,202 | 27-501802201020 | TRIMMER 20PF | |
| T203 | 40-02A049004020 | IFT 7MMA049 - YELLOW | |
| T204 | 40-023120000020 | IFT 7MM 312A - BLACK | |
| T205 | 40-027400003120 | IFT 7MM 740 - ORANGE | |
| T206 | 40-02660R002020 | IFT 7MM 660R - RED | |
| VD201,202 | 12-1SV101000021 | VARICAP DIODE 1SV-101 | |
| VD203,204 | 12-1SVC14900021 | VARICAP DIODE 1SV-149 | |
| ZD201 | 12-011560320121 | ZENER DIODE 5.6W | |
| X201 | 31-017450002010 | CRYSTAL 4.5 MHZ | |
| ZD401 | 12-011470320121 | ZENER DIODE 4.7V | |
| ZD701 | 12-012110320121 | ZENER DIODE 11V | |
| ZD702 | 12-011910320121 | ZENER DIODE 9.1V | |



12

CD-X8/MC-DX20

CD(MP3) PCB ASSY - TOP

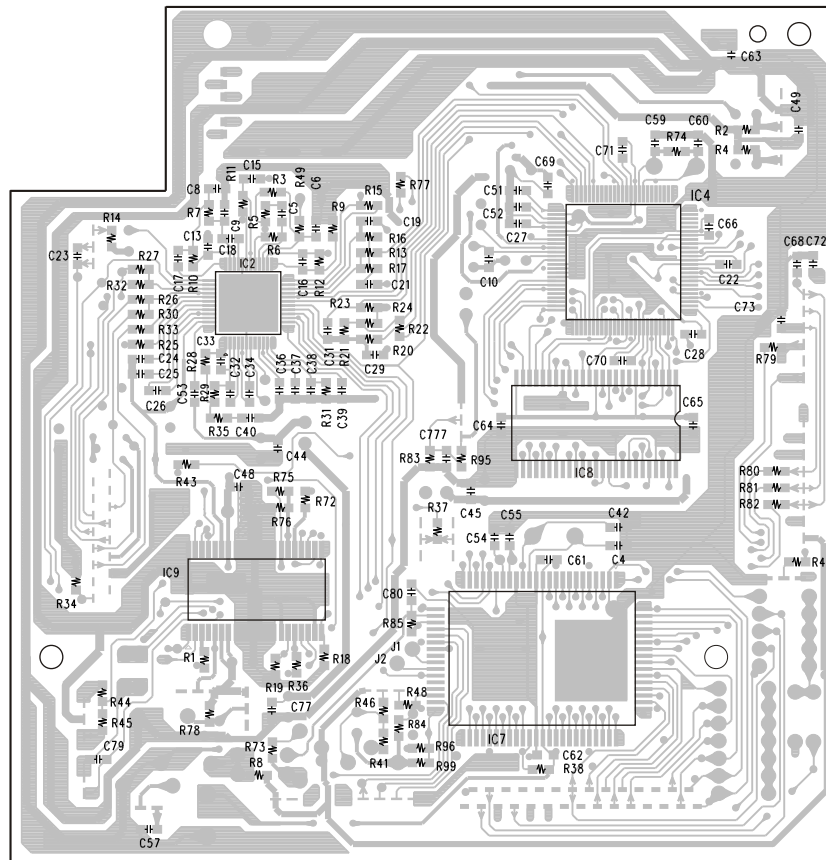
| REF. NO | PARTS NO. | DESCRIPTION | REMARKS |
|---------|-----------------|----------------------------|---------|
| | 05-30DX01500010 | CD(MP3) PCB ASSY (CD-X8) | |
| | 05-30DX01510000 | CD(MP3) PCB ASSY (MC-DX20) | |
| | 48-30DX01501321 | CD(MP3) PCB (CD-X8) | |
| | 48-30DX01500321 | CD(MP3) PCB (MC-DX20) | |
| IC2 | 16-S1L9226X0021 | IC - S1L9226X01 | |
| IC4 | 16-S5L927900021 | IC - S5L9279X01 | |
| IC7 | 16-S3P825A00421 | IC - S3P825A (CD-X8) | |
| | 16-S3P825A00221 | IC - S39825AXZZ (MC-DX20) | |
| IC8 | 16-M12L16160021 | IC - SDRAM16M (MC-DX20) | |
| IC9 | 16-KA9259D00021 | IC - KA9259D | |

CD(MP3) PCB ASSY - BOTTOM

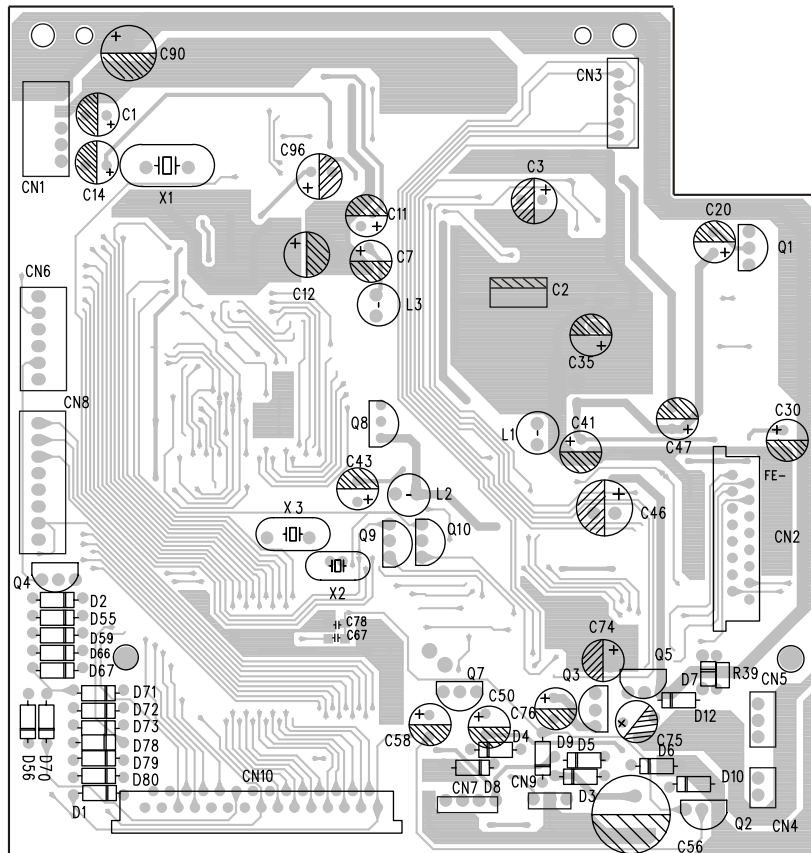
| REF. NO | PARTS NO. | DESCRIPTION | REMARKS |
|-------------------------------------|---|------------------------|---------|
| CN2 | 43-022100216020 | F.F.C WAFER 1MM 16 PIN | |
| CN3 | 43-012150160320 | WAFER 1.5MM 6 PIN | |
| CN4 | 43-022200120120 | WAFER 2MM 2 PIN | |
| CN5,9 | 43-022200130120 | WAFER 2MM 3 PIN | |
| C56 |  26-017220650121 | E.CAP 2200UF/10V | |
| D1-5,9,10,55,56, D66,67,71-73,80 | 12-1N4148000021 | DIODE 1N4148 | |
| D59,70 | 12-1N4148000021 | DIODE 1N4148 (CD-X8) | |
| D6,8,12 | 12-011390320121 | ZENER DIODE 3.9V | |
| D7 |  12-1N5819000021 | RECTIFIER DIODE 1N5819 | |
| L1,2,3 | 38-013100050020 | AXIAL INDUCTOR 10UH | |
| Q1,7,9,10 | 11-9015C0000021 | TR - 9015C | |
| Q2,3,4,8 | 11-9014C0000021 | TR - 9014C | |
| Q5 | 11-8550C0000021 | TR - 8550C | |
| X1 | 31-018169302220 | CRYSTAL 16.9344MHZ. | |
| X2 | 31-015320003310 | CRYSTAL 32.768KHZ | |
| X3 | 31-017800002120 | CRYSTAL 8.000MHZ | |

CD-X8/MC-DX20

CD(MP3) PCB - TOP



CD(MP3) PCB - BOTTOM



SUBWOOFER POWER PCB ASSY

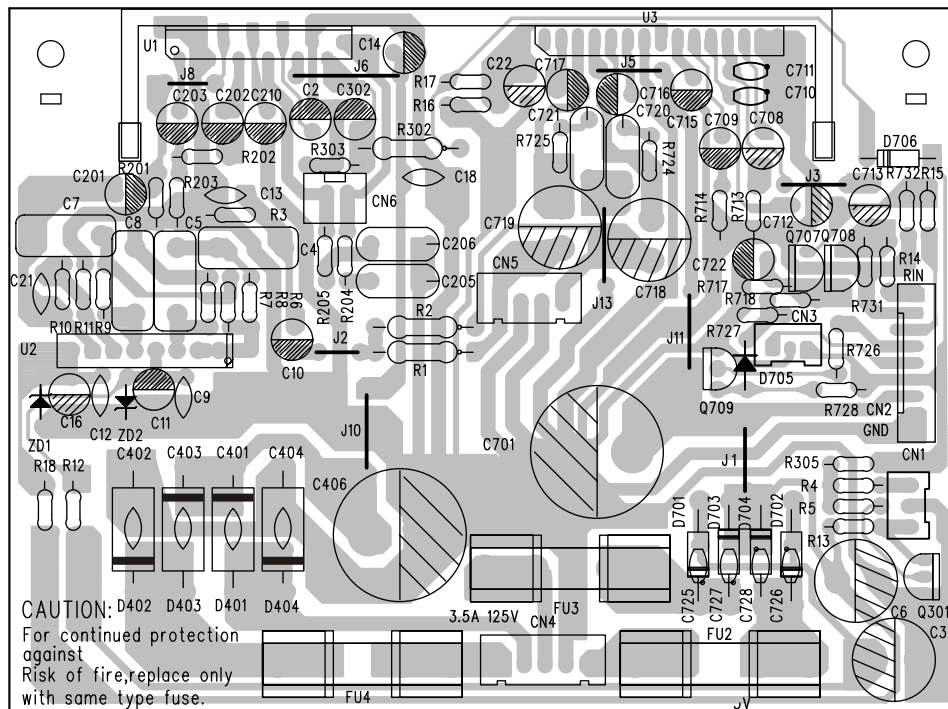
| REF. NO | PARTS NO. | DESCRIPTION | REMARKS |
|----------|-------------------|---|---------|
| | 05-07DX01500000 | SUBWOOFER POWER PCB ASSY (CD-X8) (MC-DX20B) [T/C] | |
| | 05-07DX01500001 | SUBWOOFER POWER PCB ASSY (MC-DX20S) [EX/M] | |
| | 48-07DX01500121 | SUBWOOFER POWER PCB | |
| CN1 | 43-012250130120 | WAFER 2.5MM 3 PIN | |
| CN2 | 43-012200190120 | WAFER 2MM 9 PIN | |
| CN4 | 43-012250150120 | WAFER 2.5MM 5 PIN | |
| CN5 | 43-012250140120 | WAFER 2.5MM 4 PIN | |
| CN6 | 43-012250120120 | WAFER 2.5MM 2 PIN | |
| C406 | ⚠ 26-017470950111 | E.CAP - 4700UF/35V | |
| C701 | ⚠ 26-017470850121 | E.CAP - 4700UF/25V | |
| C718,719 | ⚠ 26-017100750121 | E.CAP - 1000UF/16V | |
| D401-404 | ⚠ 12-1N5401000021 | RECTIFIER DIODE 1N5401 | |
| D701-704 | ⚠ 12-RL2020000021 | RECTIFIER DIODE RL-202 | |
| D705 | 12-1N4148000021 | DIODE 1N4148 | |
| D706 | 12-1N4001000021 | RECTIFIER DIODE 1N4001 | |
| FU2,3 | ⚠ 46-055350200010 | GLASS FUSE 3.5A/125V (CD-X8) (MC-DX20B) [T/C] | |
| | ⚠ 46-055350300010 | GLASS FUSE 3.5A/250V (MC-DX20S) [EX/M] | |
| FU4 | ⚠ 46-055400200010 | GLASS FUSE T4A/125V (CD-X8) (MC-DX20B) [T/C] | |
| | ⚠ 46-055400300010 | GLASS FUSE T4A/250V (MC-DX20S) [EX/M] | |
| Q301,709 | 11-9014C0000021 | TR - 9014C | |
| Q707,708 | 11-2SD1936T0021 | TR - 2SD1936T | |
| U1 | 16-TA8216H00021 | IC - TA8216H | |
| U2 | 16-BA4558N00021 | IC - BA4558N | |
| U3 | 16-BA5417000021 | IC - BA5417 | |
| ZD1,2 | 12-011910320121 | ZENER DIODE 9.1V | |

RCA/D-S JACK PCB ASSY

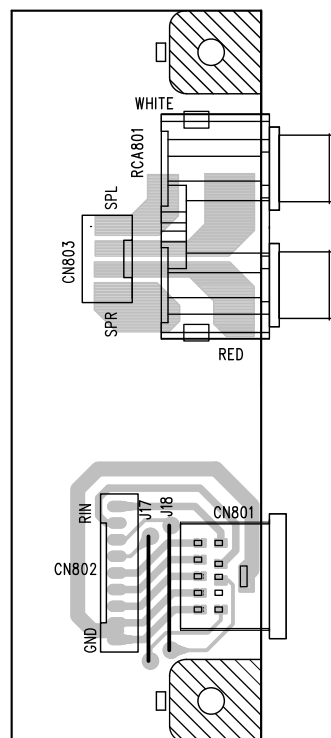
| REF. NO | PARTS NO. | DESCRIPTION | REMARKS |
|---------|-----------------|-----------------------|---------|
| | 05-08DX01500000 | RCA/D-S JACK PCB ASSY | |
| | 48-08DX01500220 | RCA/D-S PCB | |
| RCA801 | 43-451200006120 | RCA JACK 2PIN | |

CD-X8/MC-DX20

SUBWOOFER POWER PCB



RCA/D-S JACK PCB



KEY / DISPLAY PCB ASSY

| REF. NO | PARTS NO. | DESCRIPTION | REMARKS |
|---------|-----------------|----------------------------|---------|
| | 05-05DX01500000 | KEY/DISPLAY PCB ASSY | |
| | 48-05DX01500120 | KEY/DISPLAY PCB | |
| LCD | 13-05DX01500020 | LCD DISPLAY SDH-M2112-TN-1 | |
| LED1,3 | 13-011300022020 | LED D3MM - WHITE | |
| LED2,4 | 13-011506022120 | LED D5MM - BLUE | |
| Q707 | 11-9015C0000021 | TR - 9015C | |
| REM | 17-05FM60380011 | OPTIC SENSER FM-6038TM2-5A | |
| SW1-13 | 41-150010030020 | TACH SW 6x6mm 4 LEGS | |

HP/AUX JACK PCB ASSY

| REF. NO | PARTS NO. | DESCRIPTION | REMARKS |
|------------------|-----------------|---------------------|---------|
| | 05-09DX01500000 | HP/AUX PCB ASSY | |
| | 48-09DX01500120 | HP/AUX PCB | |
| AUX | 43-451200012020 | RCA JACK 2PIN | |
| HEADPHONE | 43-433160004020 | PHONE JACK 3.5MM | |
| L401,402,403,405 | 38-013100050220 | AXIAL INDUCTOR 10UH | |

OPEN SW PCB ASSY

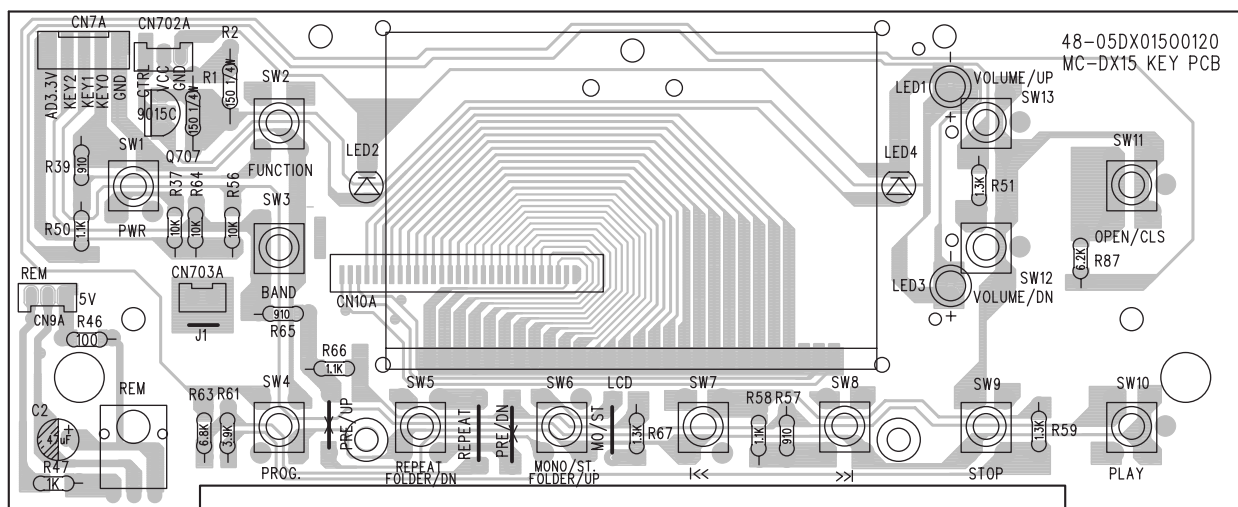
| REF. NO | PARTS NO. | DESCRIPTION | REMARKS |
|---------|-----------------|----------------------------|---------|
| | 48-23DX01500220 | OPEN SW PCB ASSY | |
| | 41-071200000020 | SERIES MICRO SWITCH SD-002 | |

CLOSE SW PCB ASSY

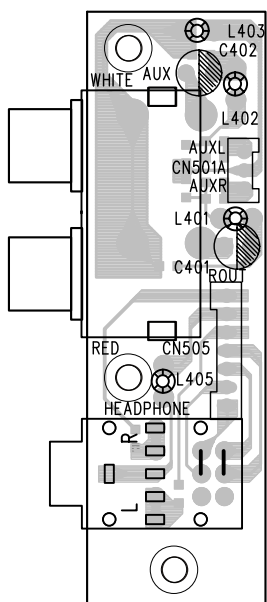
| REF. NO | PARTS NO. | DESCRIPTION | REMARKS |
|---------|-----------------|----------------------------|---------|
| | 48-23DX0150022A | CLOSE SW PCB ASSY | |
| | 41-071200000020 | SERIES MICRO SWITCH SD-002 | |

CD-X8/MC-DX20

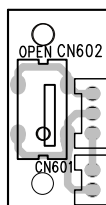
KEY/DISPLAY PCB



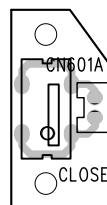
HP/AUX JACK PCB



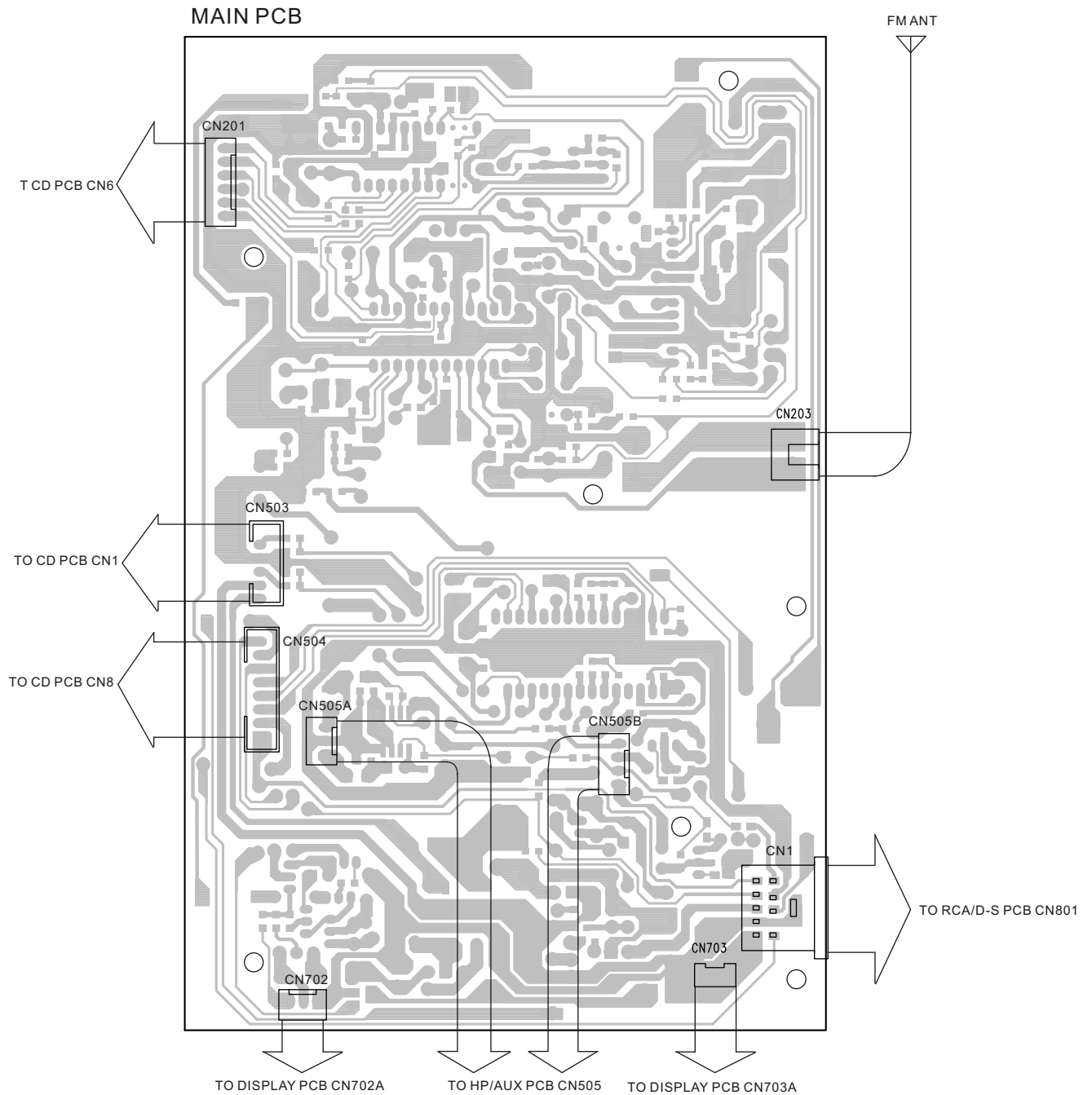
OPEN SW PCB



CLOSE SW PCB

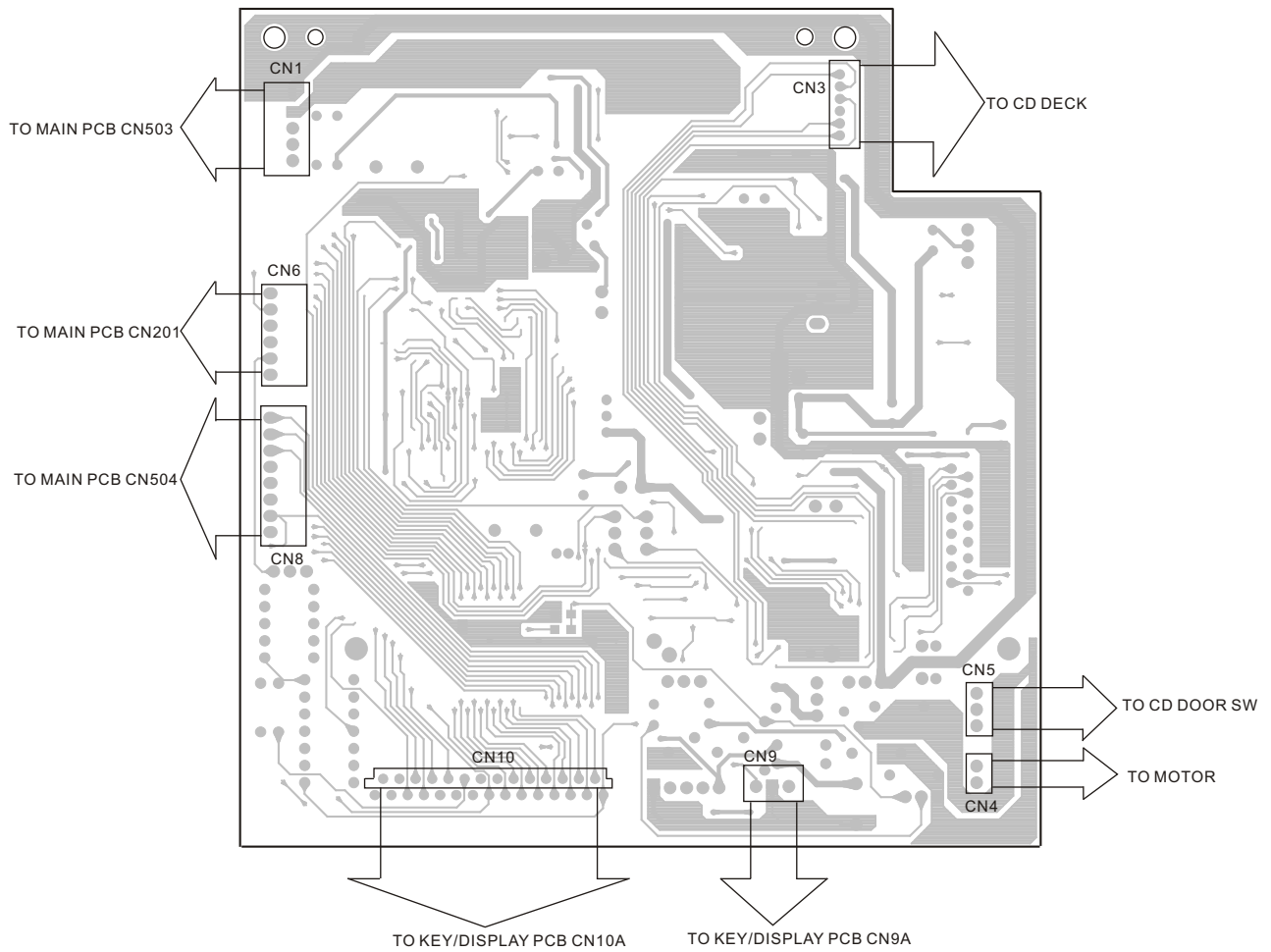


6 WIRING DIAGRAM

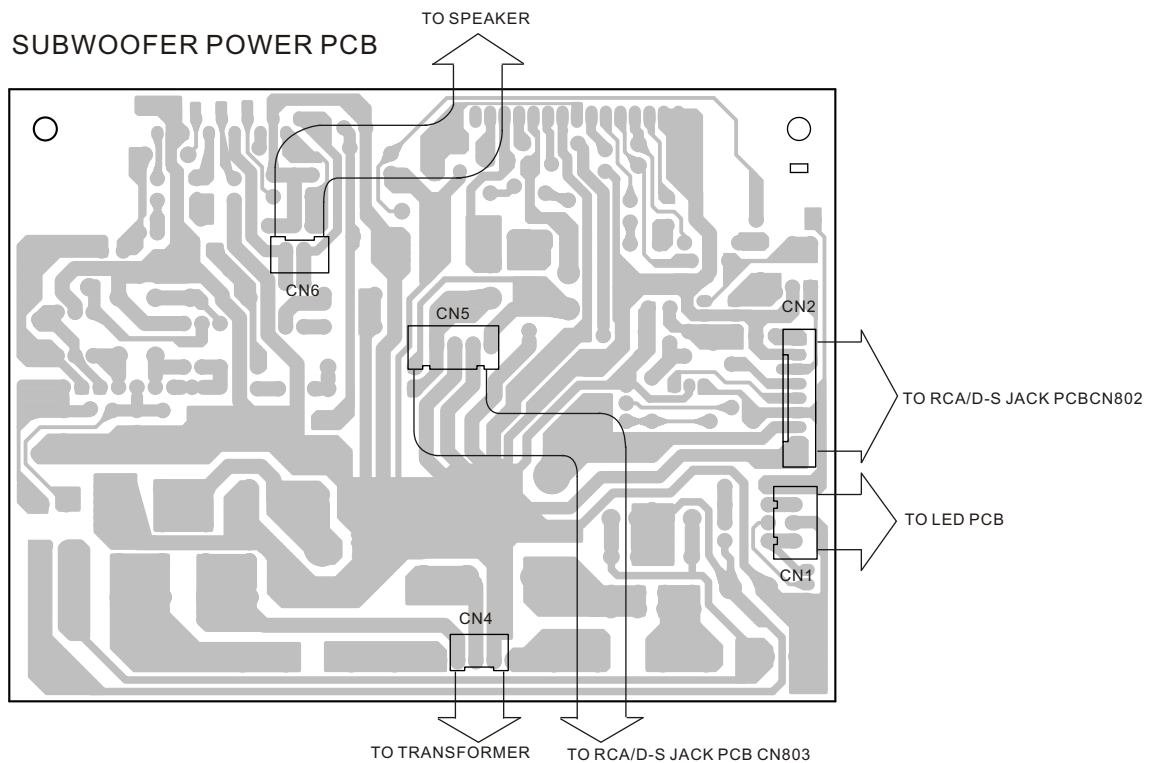


CD-X8/MC-DX20

CD(MP3) PCB - BOTTOM



SUBWOOFER POWER PCB



CD-X8/MC-DX20

7 INCLUDED ACCESSORIES

INCLUDED ACCESSORIES

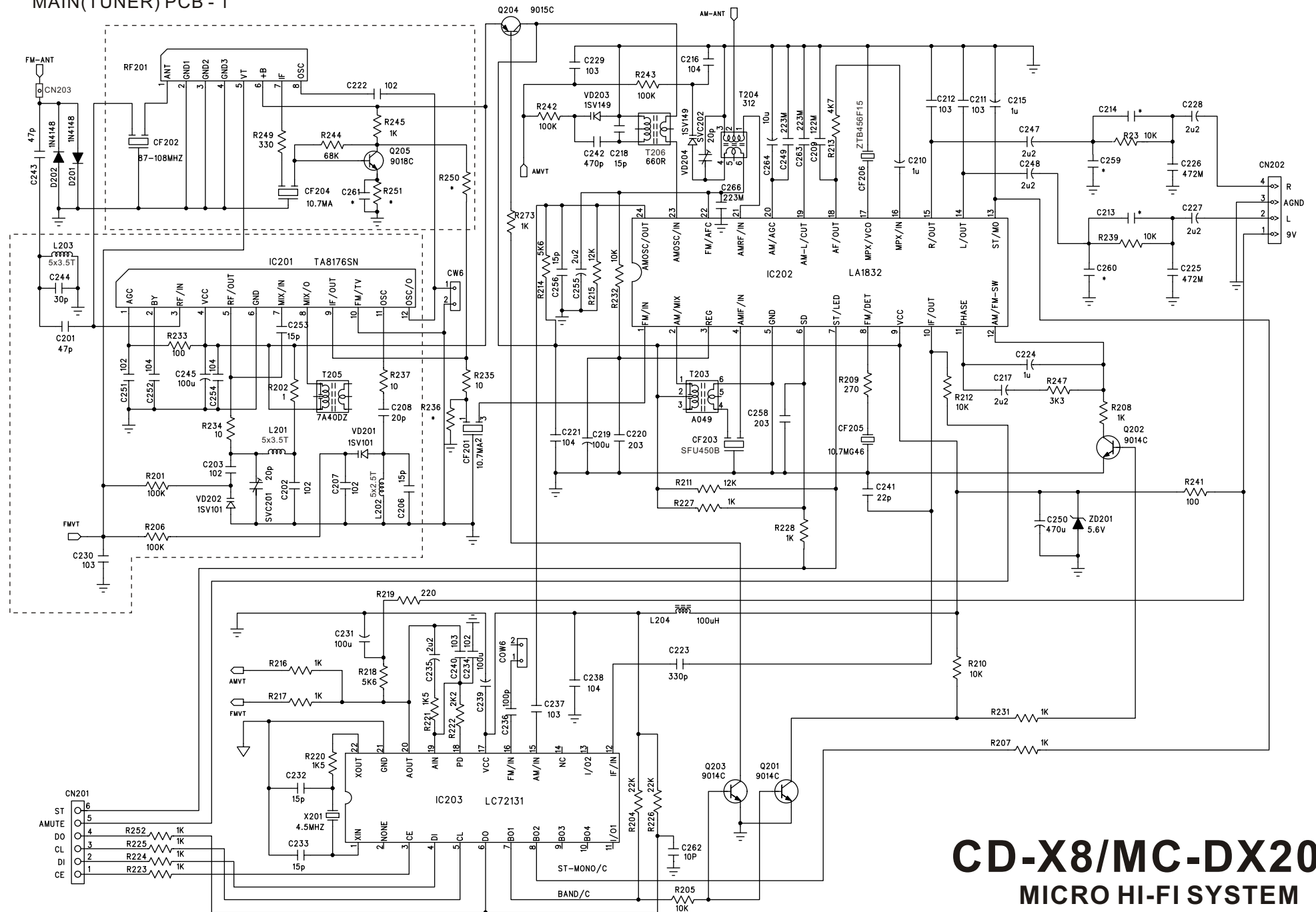
| REF. NO | PARTS NO. | DESCRIPTION | REMARKS |
|---------|-----------------|--------------------------------------|---------|
| | 77-20DX01500022 | INSTRUCTION BOOK - (CD-X8) | |
| | 77-20DX01500220 | INSTRUCTION BOOK - (MC-DX20B) [T/C] | |
| | 77-20DX01500120 | INSTRUCTION BOOK - (MC-DX20S) [EX/M] | |
| | 45-194150000020 | FM ANT 1.5M | |
| | 02-32DX01500000 | AM LOOP ANT ASSY | |
| | 45-164300051020 | SPEAKER CABLE - WHITE | |
| | 45-164300151020 | SPEAKER CABLE - RED | |
| | 51-021301000050 | LITHIUM BATTERY CR2032 | |
| | 45-244300059020 | 9 PIN S TERMINAL CABLE | |
| | 02-17DX01500000 | REMOTE CONTROL (CD-X8) | |
| | 02-17DX01500001 | REMOTE CONTROL (MC-DX20) | |

CD-X8/MC-DX20

TEAC

| | |
|---------------------------|---|
| TEAC CORPORATION | 3-7-3 Nakacho, Musashino-shi, Tokyo 180-8550, Japan Phone:(0422)52-5081 |
| TEAC AMERICA, INC. | 7733 Telegraph Road, Montebello, California 90640 Phone: (323)726-0303 |
| TEAC CANADA LTD. | 5939 Wallace Street, Mississauga, Ontario L4Z 1Z8, Canada Phone: (905)-890-8008 |
| TEAC MEXICO, S.A.De C.V. | Campesinos 184,Col. Granjas Esmeralda, 09810, Mexico Phone: (525)-581-5500 |
| TEAC UK LIMITED | 5 Marlin House, Croxley Business Park, Watford, Hertfordshire, WD18 8TE, U.K. Phone: 01923-819699 |
| TEAC DEUTSCHLAND GmbH | Bahnstrasse 12, 65205 Wiesbaden-Erbenheim, Germany Phone:0611-71580 |
| TEAC FRANCE S.A. | 17, Rue Alexis-de-Tocqueville, CE 005 92182 Antony Cedex, France Phone:(1)42.37.01.02 |
| TEAC NEDERLAND BV | Oeverkruid 15,NL-4941 W Raamsdonksveer, Nederland Phone:0162-510210 |
| TEAC BELGIUM NV/SA. | c/o TEAC NEDERLAND BV, Oeverkruid 15, NL-4941 W Raamsdonksveer, Nederland Phone:+31-162-510860 |
| TEAC ITALIANA S.p.A. | Via C, Cantu 11, 20092 Cinisello Balsamo, Milano, Italy Phone:02-66010550 |
| TEAC AUSTRALIA PTY., LTD. | 280 William Street, Melbourne VIC 3000, Australia Phone:(03)9672-2400 |
| A.B.N. 80 005 408 462 | |

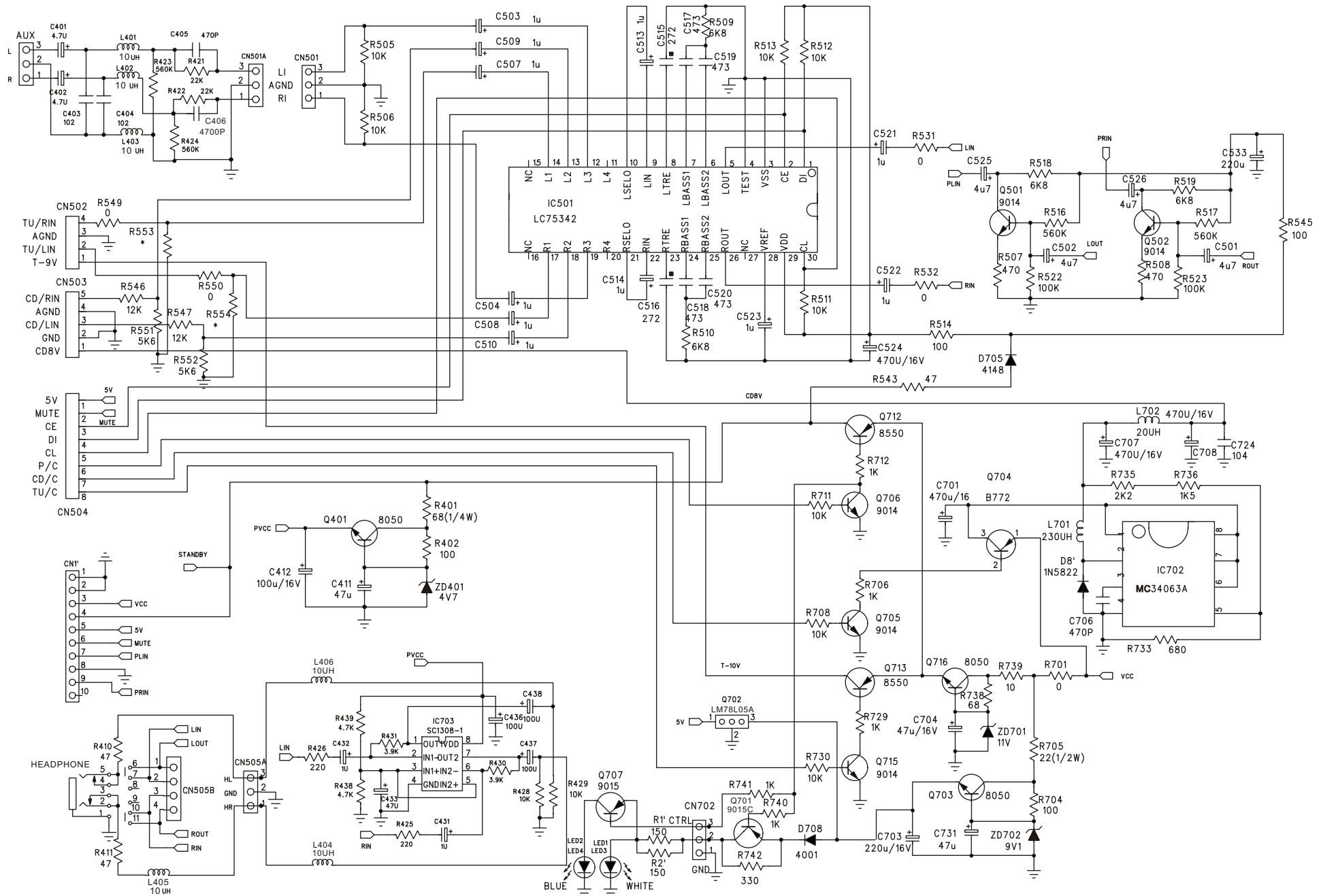
MAIN(TUNER) PCB - 1



CD-X8/MC-DX20

MICRO HI-FI SYSTEM

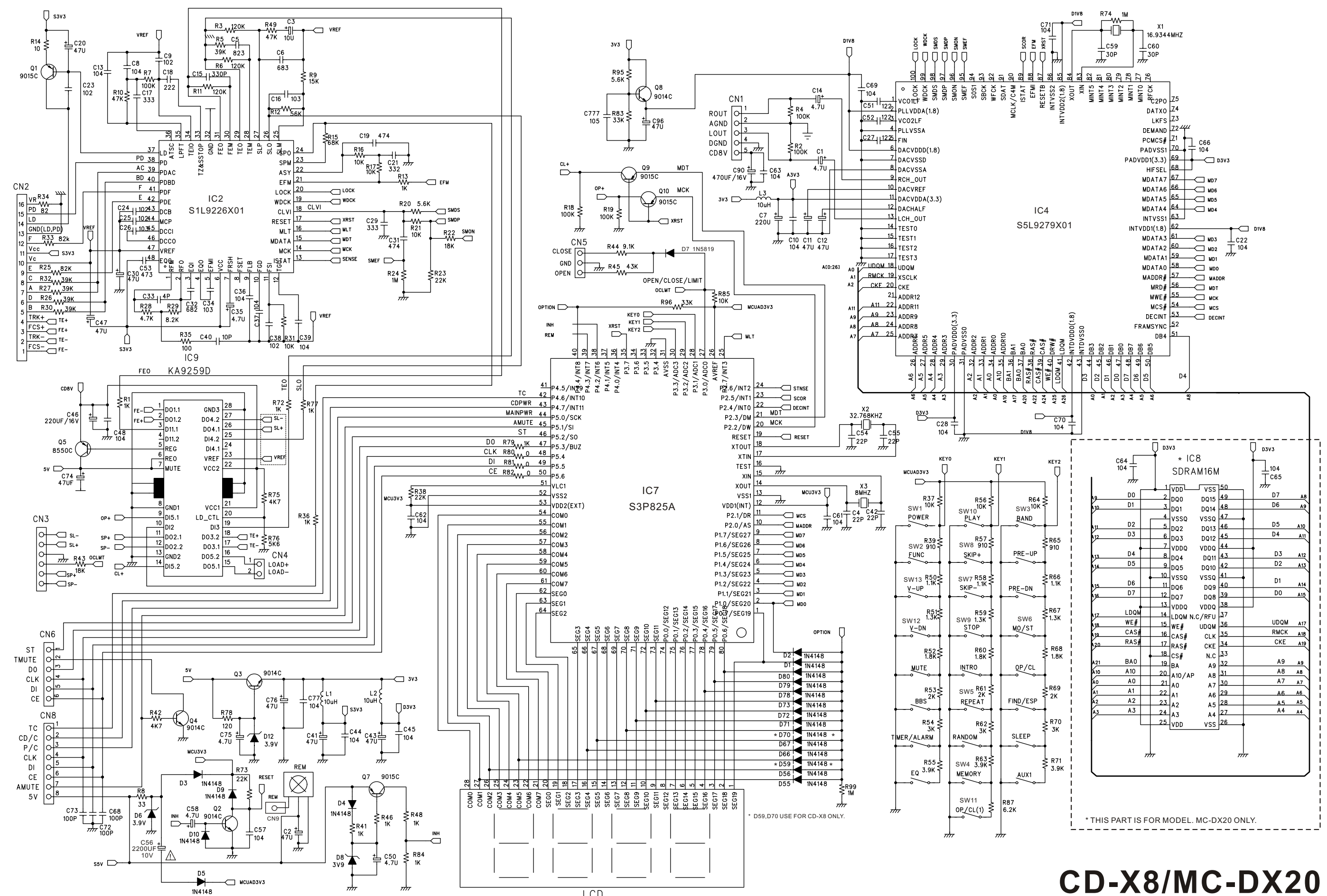
MAIN(TUNER) PCB - 2



CD-X8/MC-DX20

MICRO HI-FI SYSTEM

CD(MP3) PCB



CD-X8/MC-DX20
MICRO HI-FI SYSTEM

CD-X8/MC-DX20

MICRO HI-FI SYSTEM