

PHOTOFACT[®] with

CIRCUITRACE[®]

For Supplier Address See PHOTOFACT Index



ZENITH MODEL R26L

ALIGNMENT INSTRUCTIONS

Check for specified source voltage. Set volume control at maximum.
 Fashion loop of several turns of wire and connect generator across loop.
 Use only enough generator output to obtain a suitable indication.
 Suggested Alignment Tools:

A1, A2, A3, A7 thru A11.....GENERAL CEMENT 9087.....WALSCO 2528
 A4, A5, A12, A13.....GENERAL CEMENT 8605.....WALSCO 2505
 A6.....GENERAL CEMENT 8282.....WALSCO 2526

SELECTOR IN AM

	GENERATOR FREQUENCY	RADIO DIAL SETTING	INDICATOR	ADJUST	REMARKS
1.	455KC 400 cycle modulation	Tuning gang fully open.	Output Meter across voice coil.	A1,A2, A3	Adjust for maximum. Repeat until no further improvement can be made.
2.	1620KC	"	"	A4	Adjust for maximum.
3.	1400KC	Tune to signal	"	A5	"
4.	600KC	"	"	A6	Rock tuning gang and adjust for maximum. Repeat steps 2 thru 4 until no further improvement can be made.

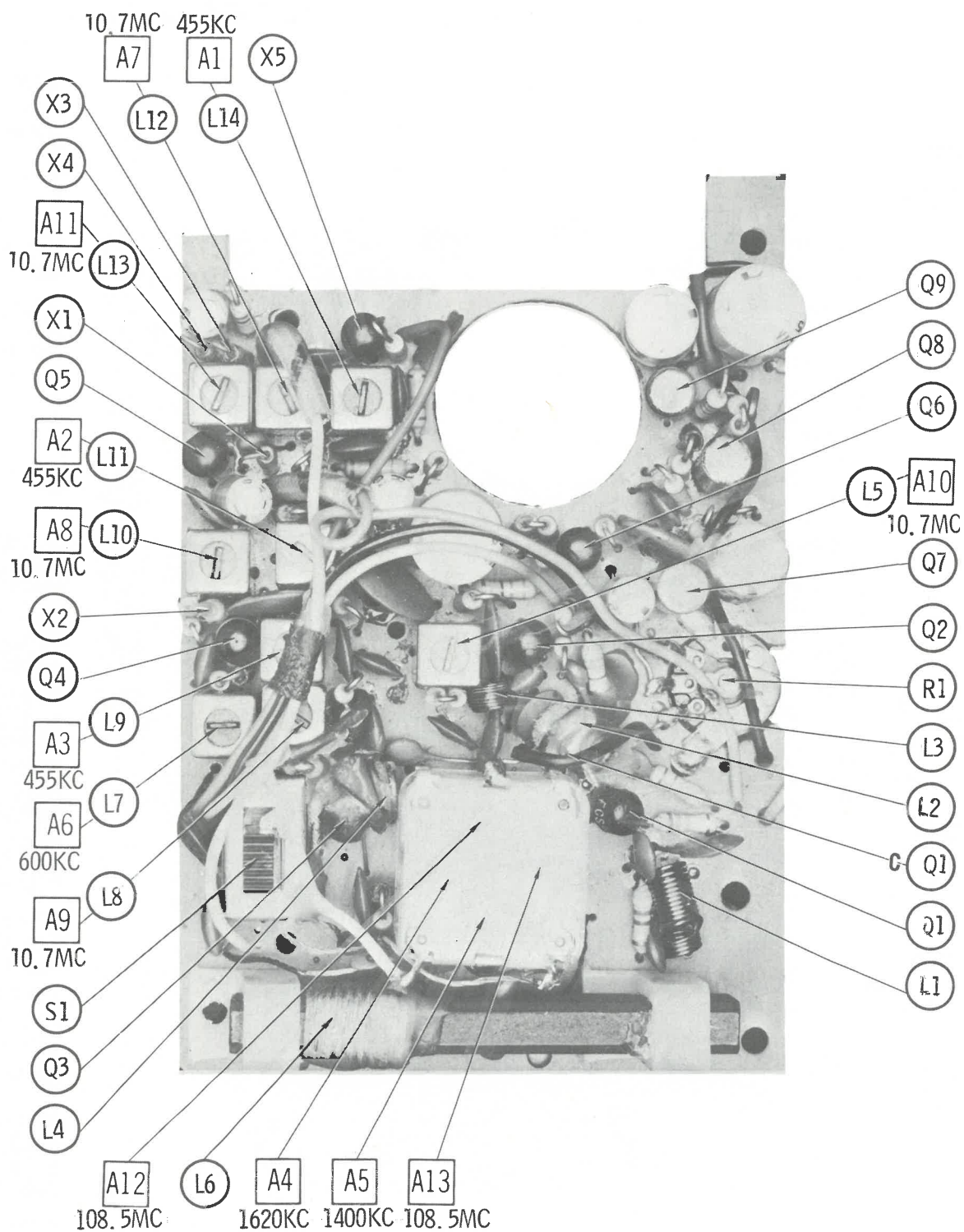
SELECTOR IN FM

Connect two matched 100K resistors in series from Point $\diamond A$ to ground. The junction of these two resistors is alignment Point $\diamond C$.

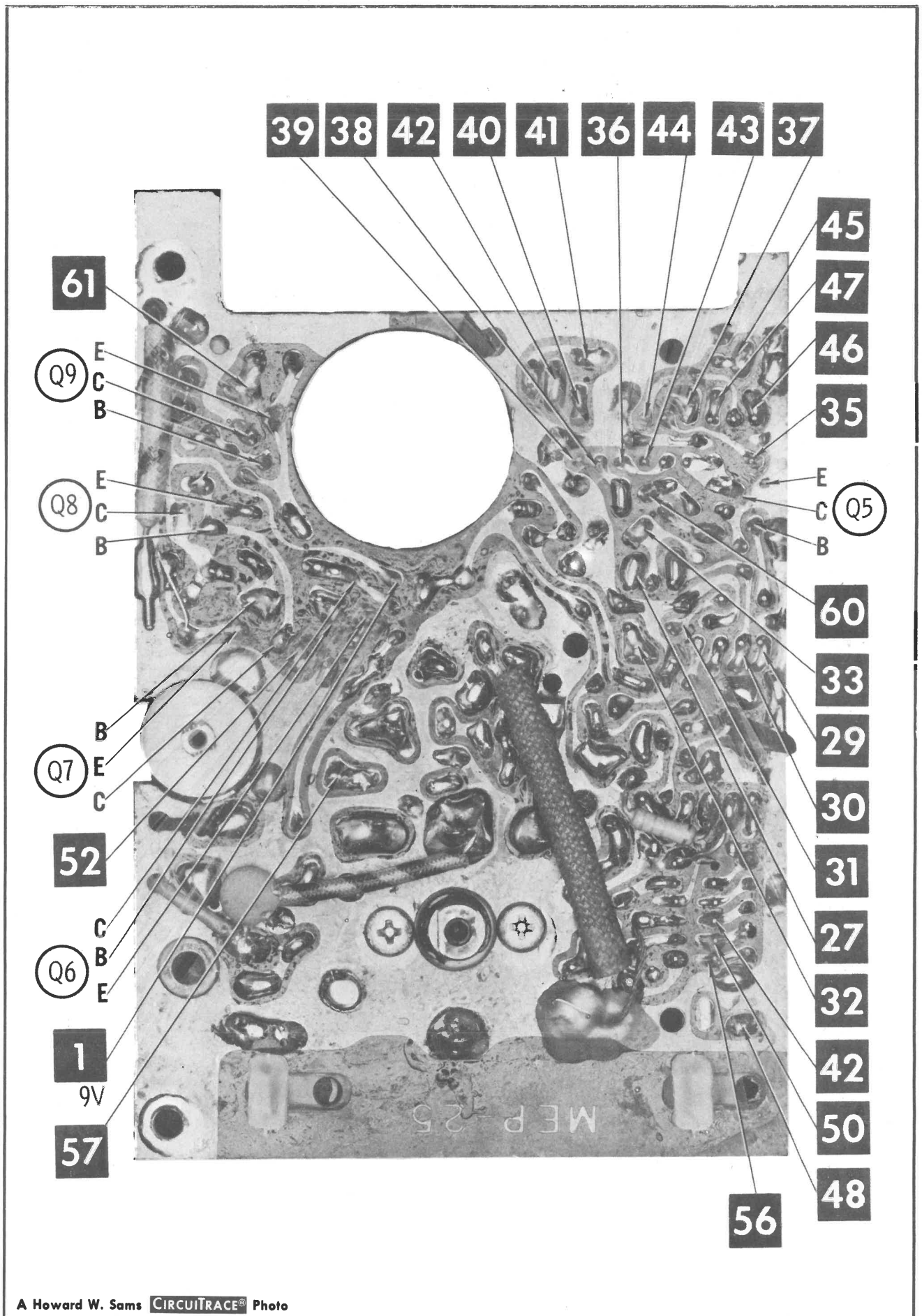
	GENERATOR FREQUENCY	RADIO DIAL SETTING	INDICATOR	ADJUST	REMARKS
5.	10.7MC Unmodulated	Point of non-interference	DC probe of VTVM to point $\diamond A$, common to ground.	A7 thru A10	Adjust for maximum
6.	"	"	DC probe of VTVM to point $\diamond B$, common to ground.	A11	Adjust for zero reading. A positive or negative reading will be obtained on either side of the correct setting.
7.	108.5MC	High freq. end.	DC probe of VTVM to point $\diamond A$, common to ground.	A12 A13	Adjust for maximum

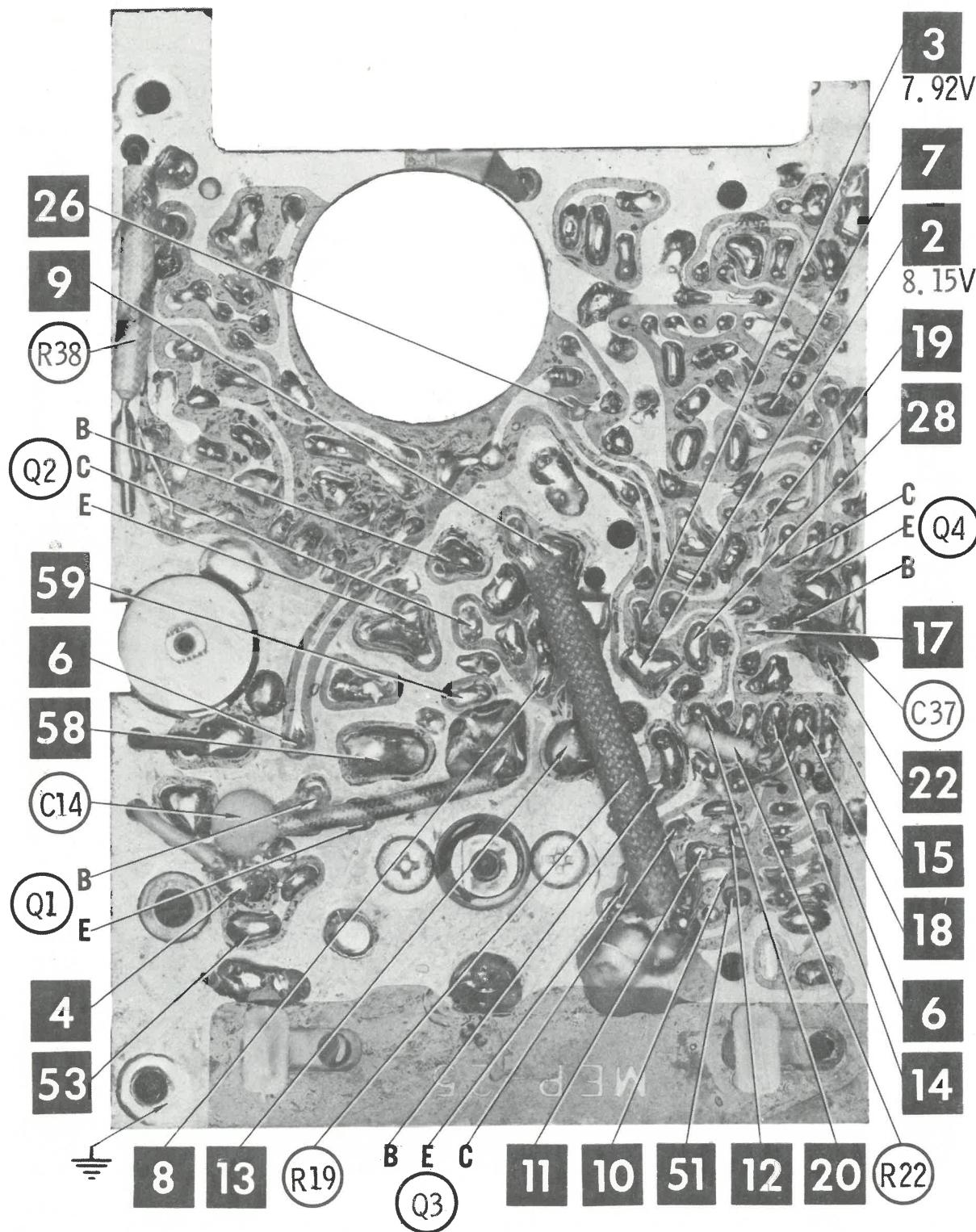
HOWARD W. SAMS & CO., INC. Indianapolis, Indiana 46206

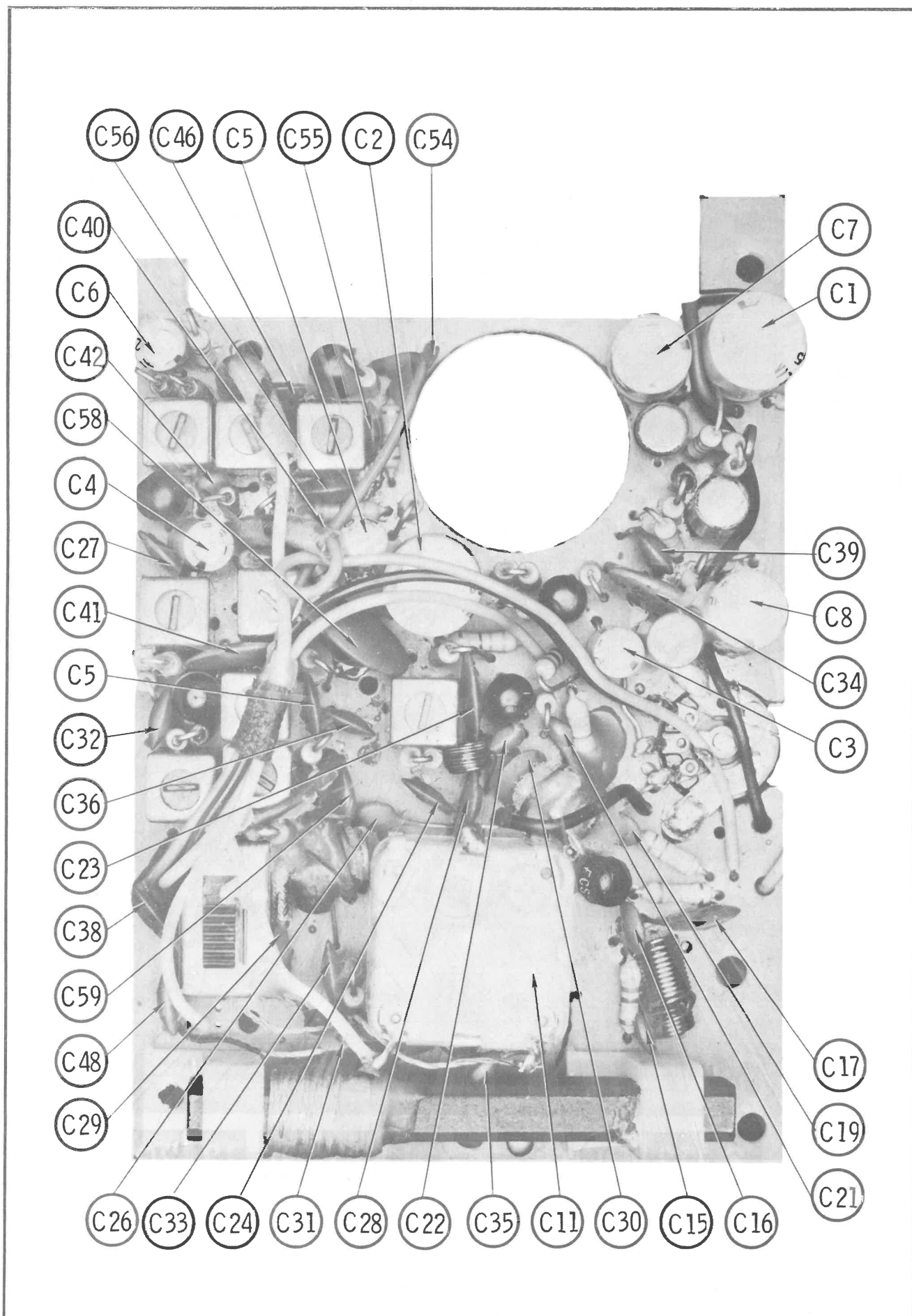
© 1970 Howard W. Sams & Co., Inc. Printed in U. S. of America TK881

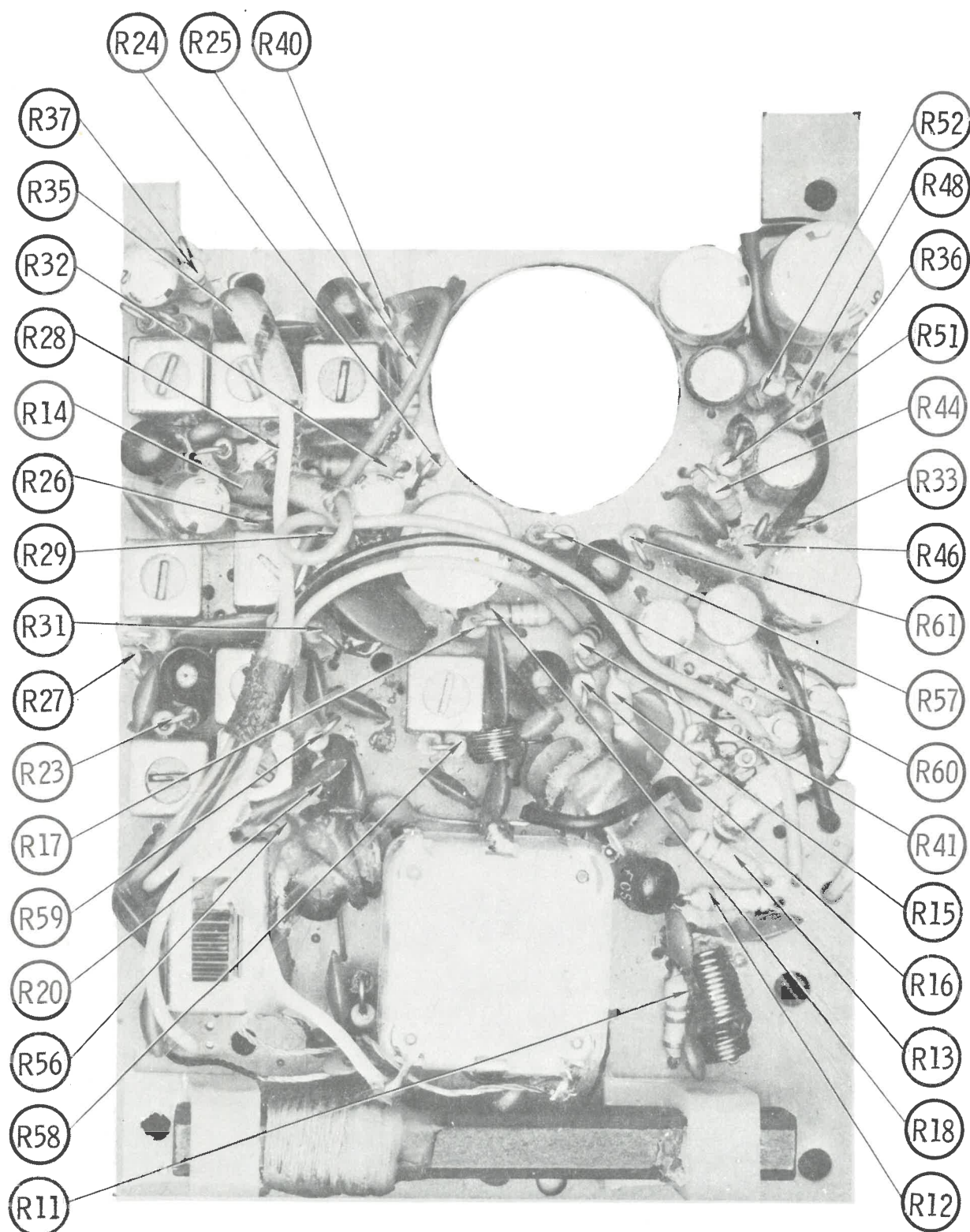


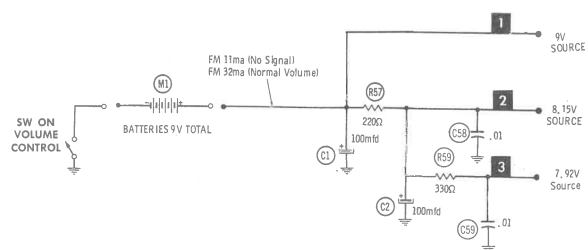
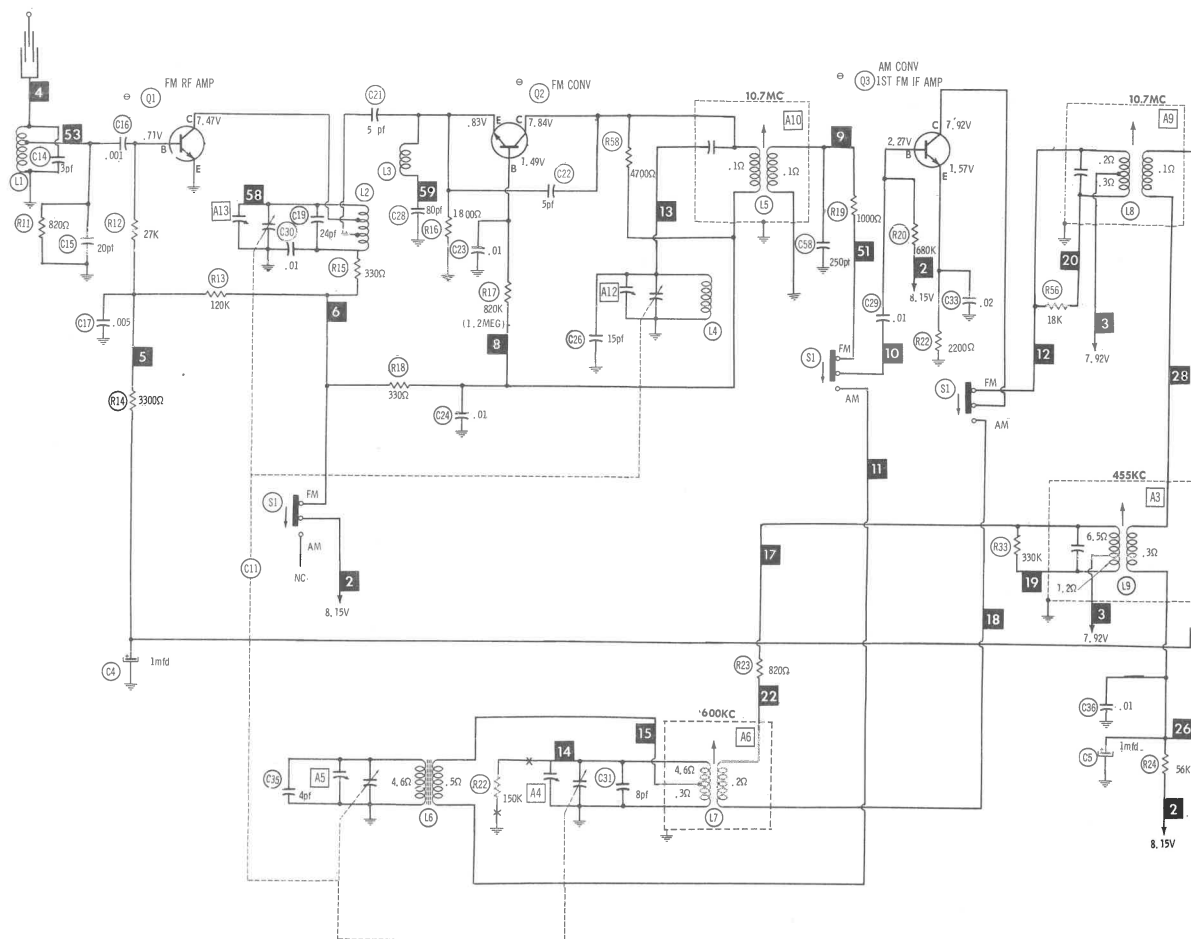
ZENITH MODELS R26L/Y, 28A/Y, Royal 26L/Y, 28A/Y







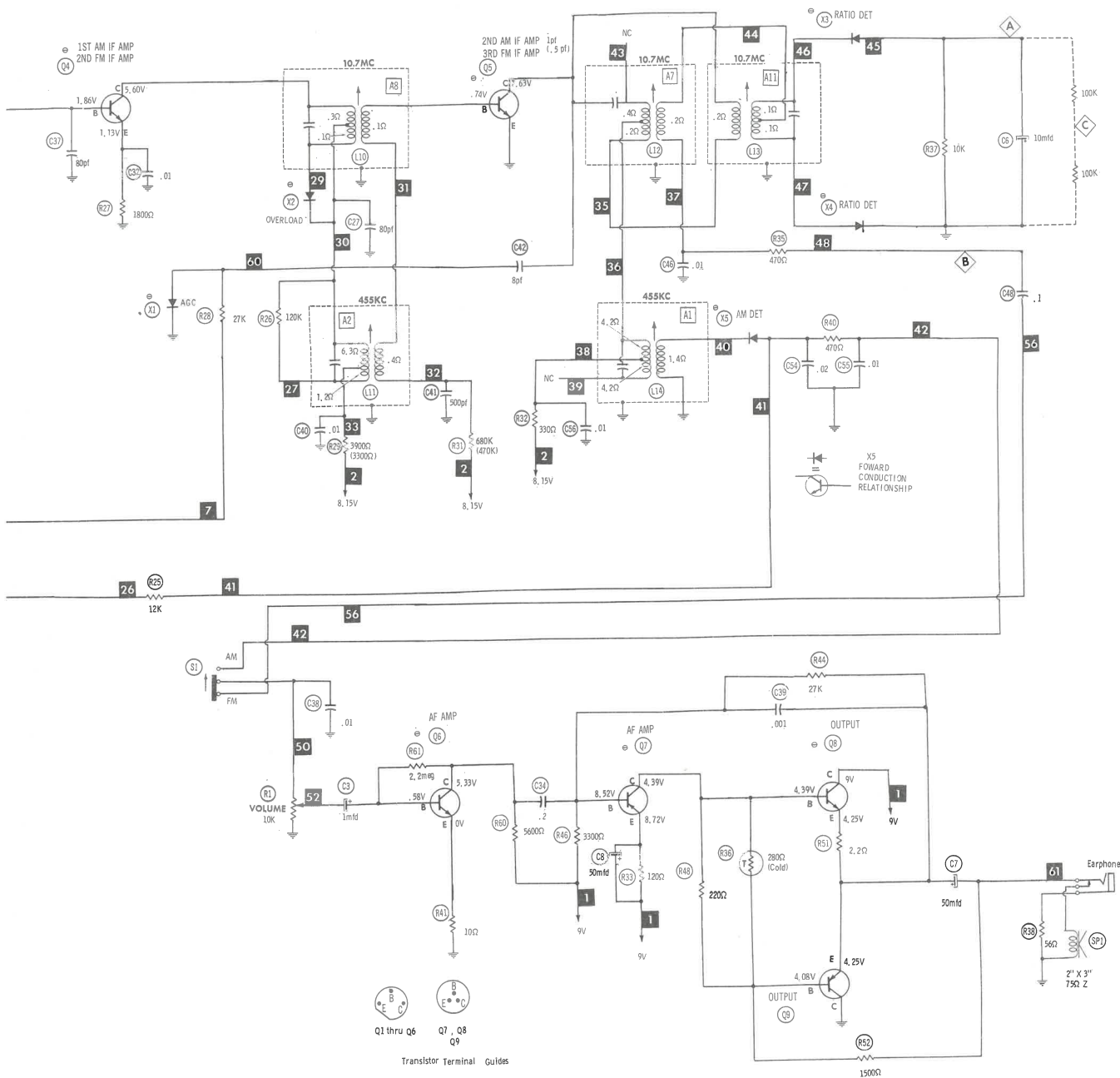




⚡ Denotes ground
 —X— Indicates connection not used in some versions.
 ○ See parts list.
 Measurements taken with switching in position shown unless otherwise indicated.
 ▲ Measured with switching in "AM" position.
 Values shown in () are used in some applications.
 Resistors are 1/2W or less, 10% or 20%, unless otherwise indicated.
 Supply voltage maintained at rated value for measurements.
 Voltage and resistance measured with VTVM or equivalent meter.
 No signal applied and controls adjusted for normal operation.
 Controls viewed from actuator end. Arrow indicates clockwise rotation.
 Numbers assigned to terminals may not be found on the unit.
 Transistor resistances vary widely. No resistance measurements taken.

A PHOTOFAC STANDARD NOTATION SCHEMATIC
 with **CIRCUITRACE**
 © Howard W. Sams & Co., Inc. 1970

ZENITH MODELS R26L/Y, 28A/Y, Royal 26L/Y, 28A/Y



ZENITH MODELS R26L/Y, 28A/Y, ROYAL 26L/Y, 28A/Y

(When ordering parts, state Model, Part Number, and Description.)

General-use Unshielded Hook-up Wire	Use BELDEN No. 8530 (Solid 22AWG)	Available
	8524 (Stranded 22AWG)	in
	8570 (Stranded 26AWG)	12 Colors

ITEM No.	TYPE No.	FUNCTION	REPLACEMENT DATA					
			MFGR. PART No.	GENERAL ELECTRIC PART No.	INTERNATIONAL RECTIFIER PART No.	MOTOROLA PART No.	RCA PART No.	SYLVANIA PART No.
Q1	CS1508F/G (CS9016F/G)	FM RF Amp	921-31B (921-32B)	GE-17	TR-21	HEP55	SK3018	ECG 108
Q2	CS1508E/F (CS9016E/F)	FM Converter	921-30B (921-31B)	GE-17	TR-21	HEP55	SK3018	ECG 108
Q3	CS1509F (CS9018F)	AM Converter-1st AM IF Amp	921-34B	GE-20	TR-21	HEP50	SK3018	ECG 108
Q4	CS1509E (CS9018F)	1st AM-2nd FM IF Amp	921-33B	GE-20	TR-21	HEP50	SK3018	ECG 108
Q5	CS1509F (CS9018F)	2nd AM-3rd FM IF Amp	921-34B	GE-20	TR-21	HEP50	SK3018	ECG 108
Q6	2SC373	AF Amp	921-26B	GE-18	TR-25	HEP243	SK3020	ECG 128
Q7	2SB482	AF Amp	921-27B	GE-22	TR-25	HEP243	SK3020	ECG 128
Q8	2SD104	Output	800-310 (1)					
Q9	2SB364	Output	800-310 (1)					

(1) Matched Pair.

ITEM No.	MFR. PART OR TYPE No.	REPLACEMENT DATA				NOTES
		GENERAL ELECTRIC PART No.	INTERNATIONAL RECTIFIER PART No.	RCA PART No.	SYLVANIA PART No.	
X1	903-9B	1N60	1N60	1N60	ECG 109	(4) Matched pair.
X2	903-9B	1N60	1N60	1N60	ECG 109	
X3	903-8B	1N60	1N60	1N60	ECG 110 (4)	
X4	903-8B	1N60	1N60	1N60		
X5	903-13B	1N60	1N60	1N60	ECG 109	

ITEM No.	RATING		REPLACEMENT DATA						
			PART No.	AEROVOX PART No.	CENTRALAB PART No.	CORNELL-DUBILIER PART No.	GENERAL ELECTRIC PART No.	MALLORY PART No.	SPRAGUE PART No.
C1	100	10V	822-182B (822-183B)	MCD-180	EP15-100	PC100-16	MT1-19	MTV100CD10	TE-1135
C2	100	10V	822-182B (822-183B)	MCD-180	EP15-100	PC100-16	MT1-19	MTV100CD10	TE-1135
C3	1	10V	822-13B	MCD-10		PC1-100	MT1-1	MTV1CB50	TE-1080
C4	1	10V	822-13B	MCD-10		PC1-100	MT1-1	MTV1CB50	TE-1080
C5	1	10V	822-13B	MCD-10		PC1-100	MT1-1	MTV1CB50	TE-1080
C6	10	6V	822-14B	MCD-70	EP6-10	PC10-50	MT1-5	MTV10CB50	TE-1087
C7	50	10V	822-147B	MCD-130	EP15-50	PC50-16	MT1-16	MTV50CB15	TE-1133
C8	50	10V	822-147B	MCD-130	EP15-50	PC50-16	MT1-16	MTV50CB15	TE-1133

ITEM No.	RATING	REMARKS	REPLACEMENT DATA					
			AEROVOX PART No.	CENTRALAB PART No.	CORNELL- DUBILIER PART No.	ELMENCO PART No.	MALLORY PART No.	SPRAGUE PART No.
C11		#822-51B						
C15	20			DTZ-82	NP082	CCT0-820	CN0482	10TCC-Q82
C16	.001		GPD X5F391K	DD-391	TMD5100BX391K	CCS-391	GP339	10TS-T39
C17	.005		TTP-05	CK-503	MGP05	CCD-503	TGL-550	
C19	24		NP0-DI20	DTZ-20	NP020	CCT0-200	CN0420	10TCC-Q20
C21	5		NP0-DI5.0		NP05			10TCC-V50
C22	5		NP0-DI8.2		NP08P2			10TCC-V82
C23	.01		TTP-005	CK-502	MGP005	CCD-502	TA250	TG-D50
C24	.01		TTP-005	CK-502	MGP005	CCD-502	TA250	TG-D50
C26	15		NP0-DI20	DTZ-20	NP020	CCT0-200	CN0420	10TCC-Q20
C27	80	#822-148B	TTP-1	CK-104		TA010	TG-P10	

PARTS LIST AND DESCRIPTION (CONTINUED)

(When ordering parts, state Model, Part Number, and Description.)

CAPACITORS (cont)

ITEM No.	RATING	REMARKS	REPLACEMENT DATA					
			AEROVOX PART No.	CENTRALAB PART No.	CORNELL-DUBILIER PART No.	ELMENCO PART No.	MALLORY PART No.	SPRAGUE PART No.
C28	80	#822-148B	GPD X5F102K	DTZ-82	NP082	CCT0-820	CN0482	10TCC-Q82
C29	.01		TTP-05	DM-102	GP1000	CCD-102	SM210	2SS-D10
C30	.01		NP0-D110	CK-503	MGP05	CCD-503	TA150	TGL-S50
C31	8		GPD X5R332K	DTZ-10	NP010	CCT0-100	CN0410	10TCC-Q10
C32	.01		TTP-01	DD-332	GP3300	CCD-332	JF233	2SS-D33
C33	.02		GPD X5F501K	CK-103	MGP01	CCD-103	TA110	TG-S10
C34	.2 12V		NP0-D110	DM-501	GP500	CCD-501	GP350	10TS-T50
C35	4		TTP-005	DTZ-10	NP010	CCT0-100	CN0410	10TCC-Q10
C36	.01		TTP-02	CK-502	MGP005	CCD-502	TA250	TG-D50
C37	80		TTP-02	CK-203	MGP02	CCD-203	TA120	TG-S20
C38	.01 12V	#822-44B	GPD X5F221K	DD-221	GP220	CCD-221	GP322	10TS-T22
C39	.001		TTP-02	CK-203	MGP02	CCD-203	TA120	TG-S20
C40	.01		TTP-005	CK-502	MGP005	CCD-502	TA250	TG-D50
C41	500		NP0-D120	DTZ-20	NP020	CCT0-200	CN0420	10TCC-Q20
C42	8		TTP-005	CK-502	MGP005	CCD-502	TA250	TG-D50
C46	.01		TTP-005	CK-502	MGP005	CCD-502	TA250	TG-D50
C48	.1		TTP-02	CK-203	MGP02	CCD-203	TA120	TG-S20
C54	.02		TTP-01	CK-103	MGP01	CCD-103	TA110	TG-S10
C55	.01		TTP-05	CK-503	MGP05	CCD-503	TA150	TGL-S50
C56	.01		ADM-10-251	CPR-240J	CD7FC241J03	DM-10-241J	SX324	MS-325
C58	.01	5%	TTP-02	CK-203	MGP02	CCD-203	TA120	TG-S20
C59	.01							

Zenith Part Number.

CONTROLS (All wattages 1/2 watt, or less, unless listed)

ITEM No.	FUNCTION	RESIST-ANCE	REPLACEMENT DATA			
			MFGR. PART No.	CENTRALAB PART No.	CLAROSTAT PART No.	CTS-IRC PART No.
R1	Volume/Switch Volume/Switch	10K 10K	863-187 (1) 863-82B (2)			

(1) Used in Model R26L/Y, Royal 26L/Y.

(2) Used in Model R28A/Y, Royal 28A/Y.

RESISTORS (Power and Special)

ITEM No.	RATING	REPLACEMENT DATA	
		WORKMAN PART No.	MFGR. PART No.
R36	280 (Cold)	FS654	863-186B

ITEM No.	RATING	REPLACEMENT DATA	
		WORKMAN PART No.	MFGR. PART No.

COILS (RF-IF)

ITEM No.	USE	REPLACEMENT DATA			
		PART No.	MEISSNER PART No.	MILLER PART No.	WORKMAN PART No.
L1	FM Antenna	820-34B			
L2	FM RF	820-33B			
L3	FM IF Trap	820-15B			
L4	FM Oscillator	820-35B			
L5	FM Input IF	895-72B			
L6	Loopstick	820-36B		7789	
L7	AM Oscillator	896-76B			
L8	FM Interstage IF	895-73B			
L9	AM Input IF	895-69B	16-9033	8810	
L10	FM Interstage IF	895-74B			
L11	AM Interstage IF	895-70B	16-9034	8811	
L12	Ratio Detector (Pri.)	895-75B			
L13	Ratio Detector (Sec.)	895-19B			
L14	AM Output IF	895-71B	16-9035	8812	

SPEAKER

ITEM No.	TYPE	REPLACEMENT DATA		NOTES
		MFGR. PART No.	QUAM PART No.	
SP1	2" X 3" PM 75 ohms	849-39B		

ZENITH MODELS R26L/Y, 28A/Y, ROYAL 26L/Y, 28A/Y

PARTS LIST AND DESCRIPTION (CONTINUED)

(When ordering parts, state Model, Part Number, and Description.)

BATTERIES

ITEM No.	VOLTAGE	MFR. PART No.	REPLACEMENT DATA		NOTES
			EVEREADY	MALLORY	
M1	9V		216 or 222 or E146X	M1604 or TR146X	

MISCELLANEOUS

ITEM No.	PART NAME	PART No.	NOTES
S1	Switch, Selector	885-37B	Model R26L, Y.
S1	Switch, Selector	885-40B	Model R28A, Y.

ACCESSORIES

ITEM	MFR. PART No.	REMARKS
Earphone	839-3B	

CABINETS & CABINET PARTS (When ordering specify model, chassis & color)

ITEM	PART No.	ITEM	PART No.
Cabinet Front (Model R26L)	814-55B	Cabinet Rear (Model R28A)	814-69B
Cabinet Front (Model R26Y)	814-57B	Cabinet Rear (Model R28Y)	814-70B
Cabinet Front (Model R28A, Y)	814-68B	Knob, Volume	846-150B
Cabinet Rear (Model R26L)	814-58B	Knob, Tuning	846-151B
Cabinet Rear (Model R26Y)	814-60B	Telescopic Antenna	801-5B

DIAL CORD STRINGING

