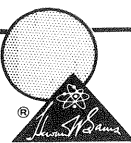
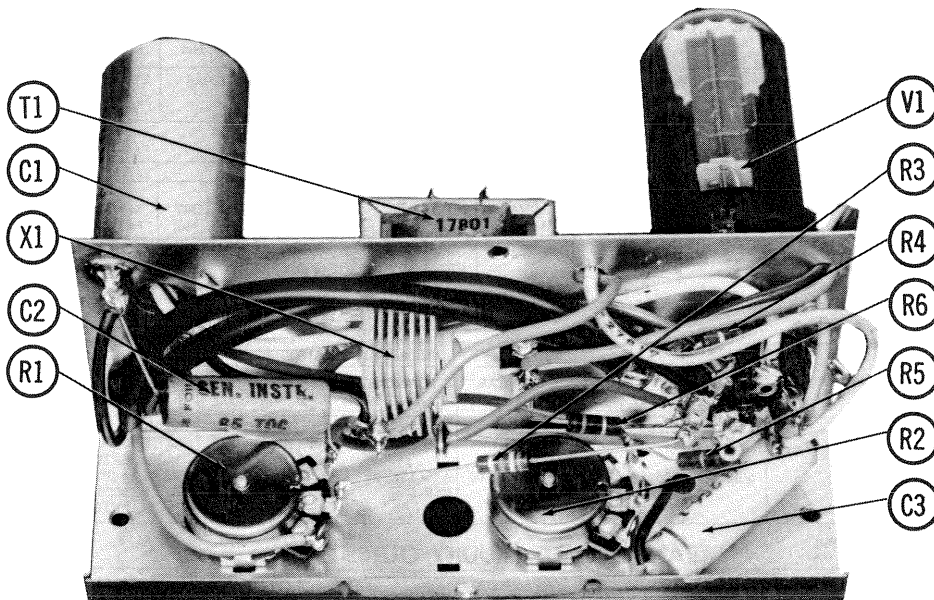


# PHOTOFACT® Folder

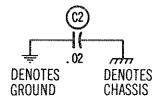
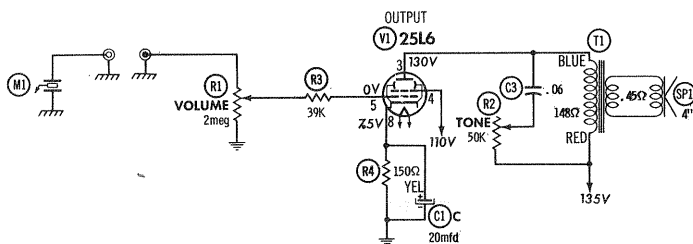


TRADE NAME : Zenith Model MP10C/L, C4/L4  
 SUPPLIER : For Current Address, See Master Index.  
 TYPE SET : 1 Tube Phono Amplifier, 4 Speed Automatic Record Changer  
 POWER SUPPLY : 110-120 Volts AC, 60 Cycles  
 RATING : 32 Watts, .4 Amp. @ 117 Volts AC  
 FOR SERVICE INFORMATION ON RECORD CHANGER PART NUMBERS 169-236, 169-238, 169-244, 169-245 - SEE SIMILAR PHOTOFACT SET 646, FOLDER 10

## ZENITH MODEL MP10C/L



ZENITH  
MODEL MP10C/L



### RESISTANCE MEASUREMENTS

ITEM	TUBE	Pin 1	Pin 2	Pin 3	Pin 4	Pin 5	Pin 6	Pin 7	Pin 8
V1	25L6	NC	35Ω	±148Ω	±10K	500K	TP	0Ω	150Ω

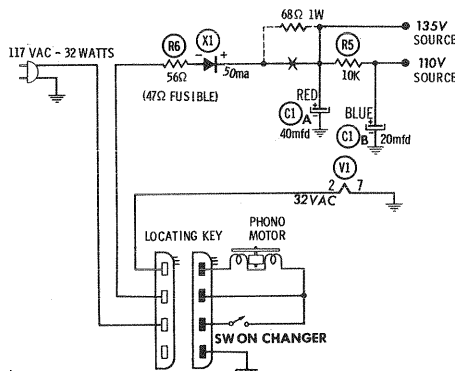
† MEASURED FROM OUTPUT X1 TP TIE POINT NC NO CONNECTION

Resistors are 1/2 watt or less and rated 10% or 20% unless otherwise indicated.

1. Voltage measurements taken with vacuum tube voltmeter.
2. All controls set for normal operation, no signal applied.
3. Measured values are from socket pin or terminal to common ground.
4. All terminals viewed from bottom unless otherwise designated.
5. Numbers assigned to terminals may not be found on the unit.
6. Supply voltage maintained at rated value for voltage readings.

A PHOTOFACT STANDARD NOTATION SCHEMATIC  
 © Howard W. Sams & Co., Inc., 1965

ZENITH  
MODEL MP10C/L



HOWARD W. SAMS & CO., INC. Indianapolis 6, Indiana

The listing of any available replacement part herein does not constitute in any case a recommendation, warranty or guaranty by Howard W. Sams & Co., Inc., as to the quality and suitability of such replacement part. The numbers of these parts have been compiled from information furnished to Howard W. Sams & Co., Inc., by the manufacturers of the particular type of replacement part listed. NR083

Reproduction or use, without express permission, of editorial or pictorial content, in any manner, is prohibited. No patent liability is assumed with respect to the use of the information contained herein. © 1965 Howard W. Sams & Co., Inc., Indianapolis 6, Indiana. Printed in U. S. of America

DATE 4 -65

SET 747 FOLDER 9

SET 747 FOLDER 9



# PARTS LIST AND DESCRIPTION

## TUBES

♦ AMPEREX ♦			♦ GENERAL ELECTRIC ♦			♦ RCA ♦			♦ SYLVANIA ♦		
ITEM No.	USE		TYPE			ITEM No.	USE		TYPE		
V1	Output		25L6								

## POWER RECTIFIERS & SIGNAL DIODES

ITEM No.	MEASURED CURRENT	ORIGINAL Part or Type No.	RECTIFIERS				DIODES
			GENERAL ELECTRIC PART No.	MALLORY PART No.	RCA PART No.	SARKES TARZIAN PART No.	
X1	.050A	12920	GE-504 or 1N1895	A300 or D300	1N1763 or 1N2861	Model 65A or F-4	GENERAL ELECTRIC PART No.

When replacing selenium rectifier with silicon type, add series resistance to obtain original output voltage.

## ELECTROLYTIC CAPACITORS

ITEM No.	RATING		REPLACEMENT DATA					
	CAP.	VOLT.	ZENITH PART No.	AEROVOX PART No.	CORNELL-DUBILIER PART No.	GENERAL ELECTRIC PART No.	GENERAL INSTRUMENT PART No.	MALLORY PART No.
C1A B C	40 20 20	150 150 25	17803	PR84400	BBRT4215C	QT3-5	TDLT-12	TCT3114

## FIXED CAPACITORS

ITEM No.	RATING		REMARKS	REPLACEMENT DATA				
				AEROVOX PART No.	CENTRALAB PART No.	CORNELL-DUBILIER PART No.	ELMENDO PART No.	MALLORY PART No.
C2	.02	400V		P488N-02	DD-203	DPMS4S2	4DP-2-203	GEM412
C3	.06	200V		P288N-06		PKM4S56	6DP-3-603	PVC616

## CONTROLS

All wattages 1/2 watt, or less, unless otherwise listed.

ITEM No.	USE	RESISTANCE	REPLACEMENT DATA				
			ZENITH PART No.	CENTRALAB PART No.	CLAROSTAT PART No.	CTS-IRC PART No.	MALLORY PART No.
R1	Volume	2meg	17800	F1-2meg, SSK100 or (B-75)	A47-2meg-S, KSS-3	B11-139, TM5 or (BU11, CF19, SSI, DC1)*	TA26L or (RU26L, SL37, SK1000) or (UA26L, SK1000)
R2	Tone	50K	12599	F2-50K, SSK100 or (B-32)	A47-50K-Z, KSS-3	B13-123, TM5 or (BU11, CF63, SSI, DC1)*	TA54A or (RU54A, SL37, SK1000) or (UA54A, SK1000)

\* "SNAPTROL"

## TRANSFORMER (AUDIO OUTPUT)

ITEM No.	IMPEDANCE		REPLACEMENT DATA					NOTES
	PRI.	SEC.	ZENITH PART No.	MERIT PART No.	STANCOR PART No.	THORDARSON PART No.	TRIAD PART No.	
T1	2350Ω	3-4Ω	17801	A-3025	A-3332	24S53	S-12X	

## SPEAKER

ITEM No.	TYPE		REPLACEMENT DATA		NOTES
			ZENITH PART No.	QUAM PART No.	
SP1	4" PM	3-4Ω	11792	4A07	

## CABINETS & CABINET PARTS

(When Ordering Specify Model, Chassis & Color)

ITEM	PART No.	ITEM	PART No.
Case Assembly W/Hardware	17883	Handle Assembly	17187-9A
Grille Cloth	17893	Knob-Tone, Volume	15432-9C

## PHONO CARTRIDGE & NEEDLES

\*NEEDLE LISTINGS SHOWN ARE FOR RESPECTIVE REPLACEMENT CARTRIDGES ONLY.

ITEM No.	REPLACEMENT DATA								NOTES
	ZENITH PART No.		ASTATIC PART No.		ELECTRO-VOICE PART No.		SONOTONE PART No.		
	CARTRIDGE	NEEDLE*	CARTRIDGE	NEEDLE*	CARTRIDGE	NEEDLE*	CARTRIDGE	NEEDLE*	
M1	142-146	56-524* (LP) 56-525 (78)	120	N8-1s* (LP) N8-3s* (78)	88	2611* - 2613 -			
				N601-7s (LP) N601-3s (78)					Needle replacement for original cartridge.

## WIRING DATA

General-use Unshielded Hook-up Wire .....	Use BELDEN No. 8530 (Solid) Available in 12 Colors
Power Cord .....	Use BELDEN No. 8524 (Stranded) Available in 12 Colors
Power Cord (Interlock Type) .....	Use BELDEN No. 17106 (Plastic) or 17126 (Rubber) - 6 Ft.
Low-Loss Shielded Lead (Interconnecting) .....	Use BELDEN No. 17109 (Plastic) or 17129 (Rubber) - 9 Ft.
Phono Pick-up Arm Cable .....	Use BELDEN No. 8874 (Rubber) or 8895 (Plastic)
	Use BELDEN No. 8401 or 8421
	Use BELDEN No. 8430 (Two Conductor-Unshielded)
	8429 (Two Conductor-Shielded)
	8419 (Three Conductor-Shielded)