

SAFETY PRECAUTIONS

SERVICE WARNING

Only qualified service technicians who are familiar with safety checks and guidelines should perform service work. Before replacing parts, disconnect power source to protect electrostatically sensitive parts. Do not attempt to modify any circuit unless so recommended by the manufacturer. When servicing the receiver, use an isolation transformer between the line cord and power receptacle.

SERVICING THE HIGH VOLTAGE AND CRT

Use EXTREME CAUTION when servicing the high voltage circuits. To discharge static high voltage, connect a 10K ohms resistor in series with a test lead between the receiver ground and CRT anode lead. DO NOT lift the CRT by the neck. Always wear shatterproof goggles when handling the CRT to protect eyes in case of implosion.

X-RAY RADIATION AND HIGH VOLTAGE LIMITS

Be aware of the instructions and procedures covering X-ray radiation. In solid-state receivers and monitors, the CRT is the only potential source of X-rays. Keep an accurate high voltage meter available at all times. Check meter calibration periodically. Whenever servicing a receiver, check the high voltage at various brightness levels to be sure it is regulating properly. Keep high voltage at rated value, NO HIGHER. Excessive high voltage may cause X-ray radiation or failure of associated components. DO NOT depend on protection circuits to keep voltage at rated value. When troubleshooting a receiver with excessive high voltage, avoid close contact with the CRT. DO NOT operate the receiver longer than necessary. To locate the cause of excessive high voltage, use a variable AC transformer to regulate voltage. In present receivers, many electrical and mechanical components have safety related characteristics which are not detectable by visual inspection. Such components are identified by a # on both the schematic and the parts list. For SAFETY, use only equivalent replacement parts when replacing these components.

GENERAL GUIDELINES

Perform a final SAFETY CHECK before returning receiver to customer. Check repaired area for poorly soldered connections, and check entire circuit board for solder splashes. Check board wiring for pinched wires or wires contacting any high wattage resistors. Check that all control knobs, shields, covers, grounds, and mounting hardware have been replaced. Be sure to replace all insulators and restore proper lead dress.

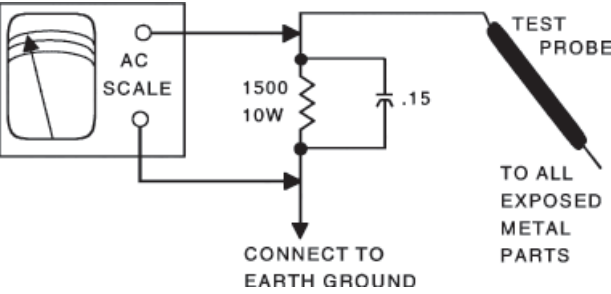
SAFETY CHECKS — FIRE AND SHOCK HAZARD

Cold Leakage Checks for Receivers with Isolated Ground

Unplug the AC cord, connect a jumper across the plug prongs, and turn the power switch on (if applicable). Use an ohmmeter to measure the resistance between the jumped AC plug and any exposed metal cabinet parts such as antenna screw heads, control shafts, or handle brackets. Exposed metal parts with a return path should measure between 1M ohms and 5.2M ohms. Parts without a return path must measure infinity.

Hot Leakage Current Check

Plug the AC cord directly into an AC outlet. DO NOT use an isolation transformer. Use a 1500 ohms, 10W resistor in parallel with a .15μF capacitor to connect between any exposed metal parts on the receiver and a good earth ground. (See figure below.) Use an AC voltmeter with at least 5000 ohms per volt sensitivity to measure the voltage across the resistor. Check all exposed metal parts and measure voltage at each point. Voltage measurements should not exceed .75VAC, 500μA. Any value exceeding this limit constitutes a potential shock hazard and must be corrected. If the AC plug is not polarized, reverse the AC plug and repeat exposed metal part voltage measurement at each point.



The listing of any available replacement part herein in no case constitutes a recommendation, warranty, or guarantee by SAMS Technical Publishing, LLC as to the quality and suitability of such replacement part. The numbers of the listed parts have been compiled from information furnished to SAMS Technical Publishing, LLC by the manufacturers of the specific type of replacement part listed.

Reproduction or use, without express permission, of editorial or pictorial content, in any manner, is prohibited. No patent liability is assumed with respect to the use of the information contained herein.

© 2007 SAMS Technical Publishing, LLC

9850 E. 30th St.
Indianapolis IN 46229
www.samswebsite.com

Printed in the United States of America 5 4 3 2 1

07PF03419



PHOTOFACT[®] Technical Service Data
SILVER

SET 5311

MODEL 32PT663R99 (CHASSIS L01.1UAC)

PHILIPS

INDEX

Important Parts Information 1
Miscellaneous Adjustments Note 1
Parts List 4
Placement Chart 1
Safety Precautions 1
Schematic Component Location 1
Schematic Notes 3
Schematics
 Audio 1
 Comb Filter 3
 ECO SCAVEM 3
 Power Supply 2
 Rotation 3
 System Control 2
 Television 2
Test Equipment 1
Tuner Information 1

PHILIPS

Model 32PT663R99 (Chassis L01.1UAC)



Representative Model

Essential coverage
for servicing a television receiver...

- Schematics
- Component locations
- Parts list



OCTOBER 2007 SET 5311

5311

5311

TUNER INFORMATION

TUNER VOLTAGE CHART			
Pin	VHF Low Band	VHF High Band	UHF Band
(1) AGC	2.0V	2.2V	2.7V
(3) AS	1.3V	1.3V	1.3V
(4) SCL	3.7V	3.7V	3.7V
(5) SDA	3.8V	3.8V	3.8V
(6) +5V	5.0V	5.0V	5.0V
(7) +5V	5.0V	5.0V	5.0V
(9) +33V	33.6V	33.6V	33.6V
(11) IF	0V	0V	0V

NOTE: VHF Low Band voltages taken on channel 2.
VHF High Band voltages taken on channel 7.
UHF Band voltages taken on channel 14.

MISCELLANEOUS ADJUSTMENTS NOTE

SERVICE ALIGNMENT MODE INFORMATION

To enter service alignment mode, Factory Service Remote Control must be used. Philips
Part # 4835 3105 7511.

Important Parts Information

- Parts not listed in the parts list are commonly available at your local electronics parts retailer.
- The parts listed here are those not usually available from a well-stocked supply cabinet or bin.
- On the parts lists, safety items are marked with a # to remind you that only exact replacements are recommended for these items.
- When ordering parts, state the model number, part number, and description.

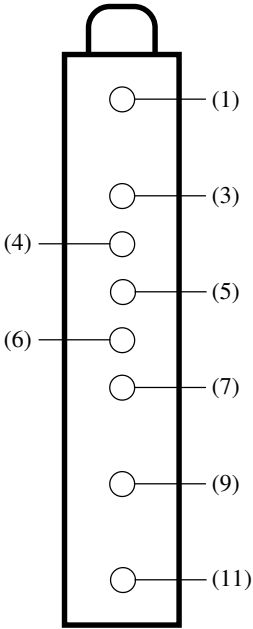
Obtaining Parts

Many of these parts are available from your local Sams authorized distributor or the manufacturer of the equipment. Call Sams for the name of your nearest distributor:

800-428-7267

TEST EQUIPMENT	
Test equipment listed by participating manufacturer illustrates typical or equivalent equipment used by Sams engineers to obtain measurements. This equipment is compatible with most types used by field service technicians.	
Equipment	Sencore No.
Oscilloscope	SC3100
Generators	
RGB	CM2125
Multiburst Signal	VG91
Color Bar	VG91
TV Stereo	VG91
Digital VOM	SC3100
Frequency Meter	SC3100
Hi-Voltage Probe	HP200
Accessory Probes	TP212
Isolation Transformer	PR570
Capacitance Analyzer	LC102
CRT Analyzer	CR7000
AC Leakage Tester	PR570
Inductance Analyzer	LC102
Flyback Yoke Tester	TVA92
Field Strength Meter	SL753
Transistor Tester	TF46
Horizontal Analyzer	HA-2500
Video Analyzer	VG91, TVA92

TUNER TERMINAL GUIDE

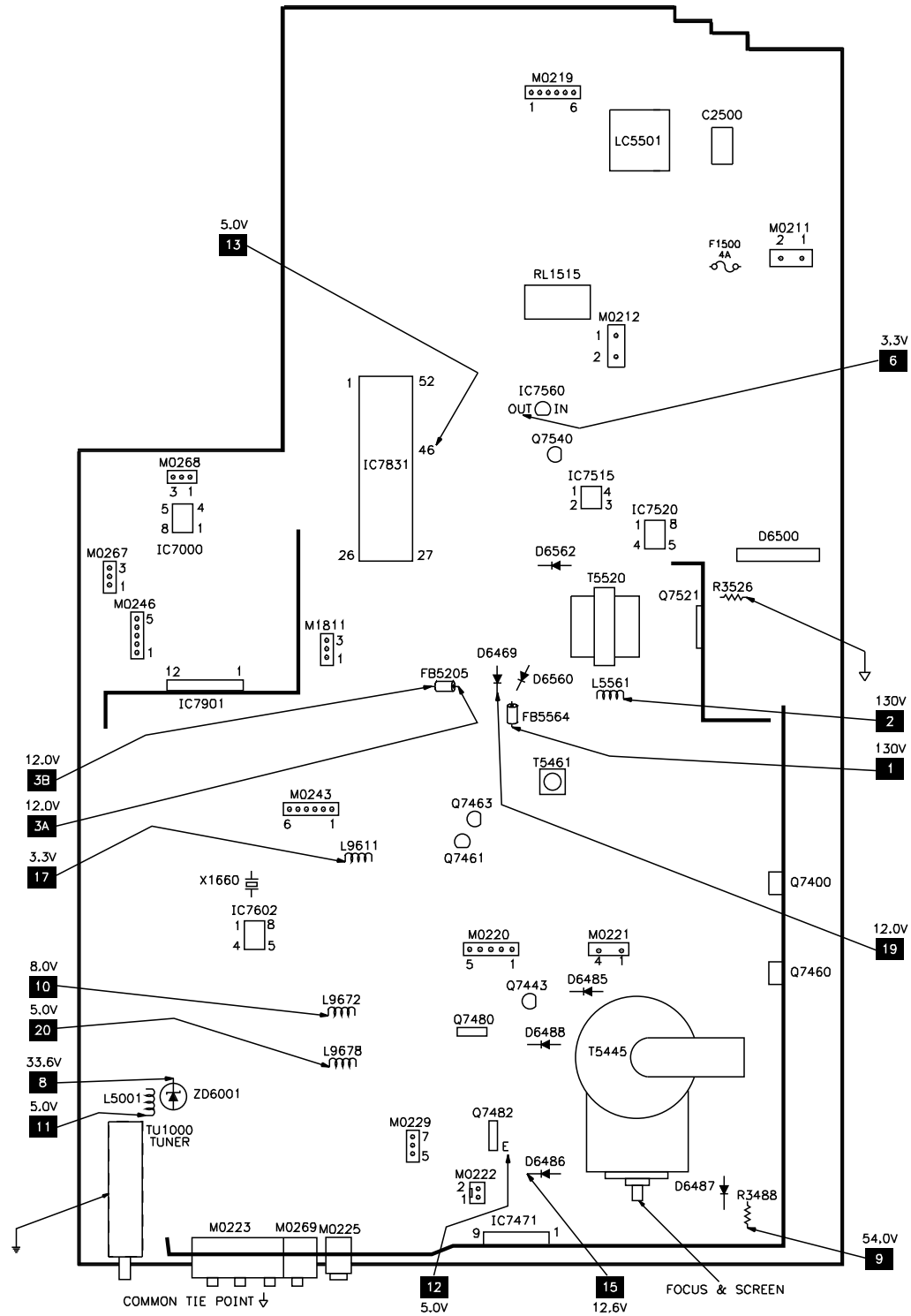


SCHEMATIC COMPONENT LOCATION GUIDE

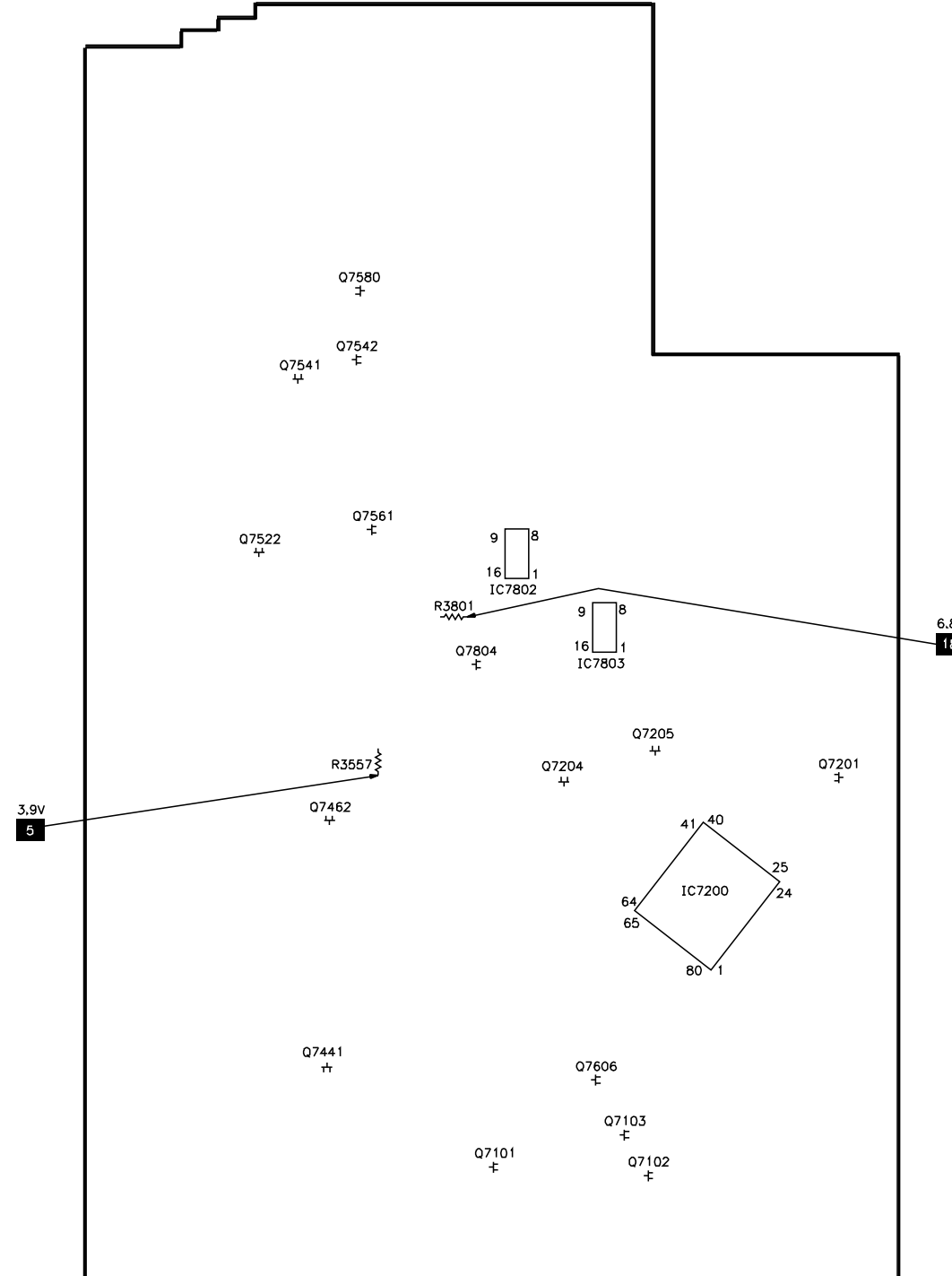
AC01	A25	C2381	D53	C2568	D25	D6565	C32	Q7101	A15	R3204	C22	R3447	D28	R3615	E37
AC12	A26	C2382	B55	C2580	B25	D6566	D25	Q7102	D33	R3205	B19	R3448	D28	R3618	D36
AC21	D15	C2401	E11	C2581	E31	D6569	D25	Q7103	D34	R3206	C18	R3449	D29	R3622	B35
C2004	D32	C2401A	B44	C2590	C30	D6580	B25	Q7201	B11	R3207	B11	R3450	E29	R3623	D36
C2005	D32	C2402	E10	C2601	B37	D6582	B30	Q7204	C19	R3208	B12	R3450A	C47	R3624	A37
C2006	E32	C2402A	A43	C2602	A35	D6691	B33	Q7205	B15	R3209	B12	R3451	E20	R3625	A37
C2007	E32	C2403	B44	C2604	D37	D6831	E3	Q7360	A54	R3212	B12	R3451A	B47	R3626	B38
C2008	C9	C2404	E11	C2606	B35	F1500	A25	Q7366	C53	R3213	B12	R3452	D20	R3627	D35
C2009	C10	C2405	E13	C2607	B35	FB5204	B30	Q7369	A55	R3217	C18	R3452A	C47	R3628	E35
C2101	D32	C2407	B43	C2608	C35	FB5205	B32	Q7373	C53	R3218	C18	R3453	E20	R3630	B35
C2102	A16	C2408	A43	C2609	B35	FB5206	C30	Q7380	D53	R3219	C19	R3453A	B48	R3634	D35
C2103	D6	C2409	A43	C2611	D35	FB5376	C53	Q7382	D53	R3220	B14	R3454	D20	R3635	E35
C2104	D6	C2411	A45	C2612	A37	FB5421	D47	Q7400	E10	R3221	B15	R3454A	B48	R3636	C37
C2105	D6	C2412	A45	C2613	A37	FB5452	E15	Q7401	A44	R3222	A15	R3455	D28	R3638	C14
C2106	D6	C2413	B45	C2615	B38	FB5521	B28	Q7402	A44	R3226	B20	R3455A	B44	R3640	C36
C2111	A18	C2414	B45	C2618	C35	FB5560	A30	Q7403	A45	R3235	D22	R3458	D15	R3685	B34
C2112	A18	C2415	B45	C2619	D35	FB5562	B30	Q7440	A46	R3241	D11	R3458A	A43	R3691	B33
C2113	B18	C2416	B45	C2691	A33	FB5564	A30	Q7441	D21	R3242	D9	R3459	E15	R3693	A33
C2121	C14	C2419	E47	C2692	B34	IC6692	A33	Q7443	D20	R3244	D12	R3460	D31	R3694	A34
C2122	B2	C2420	E46	C2693	B33	IC7000	E54	Q7444	A48	R3245	D11	R3463	E14	R3801	D29
C2123	B2	C2425	D47	C2694	B34	IC7200	B10	Q7450	D19	R3246	D10	R3465	D19	R3802	D31
C2124	C2	C2426	D47	C2695	B33	IC7200	B13	Q7450A	B46	R3247	E9	R3468	E12	R3810	D51
C2125	C2	C2427	C46	C2698	A33	IC7200	B18	Q7454	B48	R3248	D10	R3469	E17	R3811	A41
C2131	B2	C2428	D45	C2802	D32	IC7200	B36	Q7460	E14	R3249	D11	R3470	D12	R3812	A41
C2132	B2	C2429	D45	C2807	D32	IC7200	D10	Q7461	E13	R3250	D10	R3471	D15	R3813	A41
C2133	C2	C2430	D45	C2810	B4	IC7200	D10	Q7462	E12	R3251	E12	R3472	D15	R3814	B3
C2134	C2	C2431	C45	C2813	C4	IC7330	B22	Q7463	E13	R3256	E12	R3473	D15	R3815	B3
C2135	D50	C2432	C45	C2816	D30	IC7421	A46	Q7480	D28	R3257	D9	R3474	D12	R3816	B2
C2136	D50	C2433	C45	C2831	E4	IC7471	D13	Q7482	E29	R3258	E9	R3475	D13	R3817	B2
C2141	E35	C2434	C45	C2832	E4	IC7515	C25	Q7521	B28	R3259	E9	R3477	D15	R3818	C3
C2143	D33	C2435	D45	C2833	A4	IC7520	B26	Q7522	C27	R3331	B22	R3478	D15	R3819	C3
C2150	D35	C2436	C45	C2834	E4	IC7560	C31	Q7540	D26	R3332	B23	R3479	D14	R3820	C3
C2171	B2	C2440	B48	C2835	E4	IC7602	B38	Q7541	D25	R3333	C22	R3480	D15	R3821	C3
C2172	E53	C2441	E21	C2836	E4	IC7802	A3	Q7542	D25	R3334	C23	R3481	D19	R3822	D51
C2172A	C2	C2442	A47	C2837	E4	IC7802	B3	Q7561	B32	R3335	A22	R3482	D19	R3831	E4
C2173	E53	C2443	D21	C2840	D4	IC7802	D52	Q7580	B25	R3336	A23	R3484	D19	R3832	D4
C2173A	C2	C2443A	A47	C2841	D4	IC7803	A42	Q7606	C35	R3340	C31	R3486	D17	R3833	D4
C2174	B1	C2444	D21	C2842	C5	IC7803	A51	Q7804	A41	R3341	C24	R3488	D27	R3837	D5
C2176	B7	C2448	E17	C2843	C5	IC7803	B51	Q7903	D37	R3342	C24	R3490	E17	R3839	D5
C2177	C7	C2450	A32	C2844	B4	IC7831	A4	R3000	A39	R3343	C23	R3491	E13	R3843	A11
C2178	B7	C2450A	C48	C2845	B4	IC7901	B6	R3001	A39	R3344	D20	R3492	E13	R3901	C6
C2179	B7	C2451	D17	C2846	E31	L5001	E30	R3003	C9	R3345	D20	R3493	E13	R3903	B5
C2184	A2	C2452	C47	C2849	B5	L5002	B9	R3004	C9	R3346	D20	R3494	C28	R3905	B5
C2187	C2	C2453	C47	C2850	B5	L5201	B12	R3005	C10	R3360	B54	R3495	E14	R3909	B6
C2201	B14	C2455	E13	C2852	D5	L5242	E12	R3091	B34	R3361	A54	R3496	E14	R3910	B6
C2202	A52	C2457	E16	C2854	D5	L5341	D20	R3092	B34	R3362	B54	R3497	E21	R3912	D38
C2203	B12	C2458	E15	C2855	B12	L5342	C24	R3093	B34	R3363	A54	R3498	D13	R6400	E10
C2204	B18	C2459	D15	C2856	A12	L5401	B44	R3094	B34	R3367	A55	R3500	A25	RL1515	A26
C2205	B18	C2460	E12	C2857	B11	L5401A	E12	R3095	B33	R3368	A55	R3501	B25	RL1515	B26
C2208	B10	C2463	E15	C2860	A11	L5407	A43	R3096	C33	R3369	A54	R3506	A26	ROTATION	E55
C2209	C19	C2464	E16	C2894	E32	L5408	A43	R3101	A16	R3373	B53	R3508	A26	S1091	B34
C2210	C19	C2465	E15	C2895	E32	L5425	C47	R3102	A16	R3374	B53	R3519	B25	S1092	B34
C2211	D31	C2466	E15	C2897	E32	L5428	D45	R3103	D6	R3375	C53	R3520	B26	S1093	B33
C2213	B19	C2468	E15	C2898	E32	L5429	D45	R3104	D6	R3376	C53	R3521	C26	S1094	B33
C2214	A19	C2471	E32	C2902	B32	L5430	C45	R3105	D6	R3377	C54	R3522	B27	S1606	B34
C2215	B19	C2472	D15	C2903	C6	L5440	B47	R3106	D6	R3378	C54	R3523	B27	SCAVEM	C54
C2216	D32	C2473	D13	C2904	B5	L5442	A47	R3111	A18	R3380	D53	R3524	B28	SP3100	B8
C2217	D31	C2474	D12	C2905	B5	L5450	C47	R3112	A18	R3381	D53	R3525	B27	SP3101	C8
C2219	B18	C2475	D11	C2906	B5	L5451	D17	R3113	A18	R3383	D53	R3526	C28	SP3507	A26
C2220	D31	C2476	E14	C2907	B5	L5452	B47	R3114	A18	R3384	D53	R3527	C28	T5445	C17
C2221	B52	C2480	E32	C2908	C6	L5457	D16	R3115	B18	R3385	B54	R3529	C27	T5445	C27
C2241	D10	C2481	E27	D6091	B33	L5463	E16	R3116	B18	R3386	B54	R3530	B28	T5461	E14
C2242	D11	C2482	D18	D6150	D34	L5471	D15	R3123	B1	R3400	E10	R3531	C27	T5493	C17
C2243	D9	C2485	C30	D6201	C19	L5472	D13	R3124	B2	R3401	E10	R3532	B28	T5520	A29
C2244	D11	C2486	E32	D6202	C18	L5480	D24	R3125	C1	R3401A	B44	R3541	D26	TH3498	C18
C2245	D9	C2487	D28	D6331	B23	L5561	A31	R3126	C2	R3402	A44	R3542	C26	TH3499	C18
C2247	D31	C2488	D27	D6332	C22	L5602	C35	R3131	B1	R3403	E10	R3543	D26	TH3504	B26
C2248	D31	C2489	D32	D6333	C23	L5603	C35	R3132	B2	R3403A	B44	R3544	D26	TH3510	A27
C2249	D9	C2491	D27	D6335	A23	L5604	C35	R3133	C1	R3404	E10	R3545	D26	V1010	B24
C2250	D10	C2492	C17	D6365	A53	L5810	E30	R3134	C2	R3404A	B45	R3548	D26	X1002	B9
C2252	D12	C2493	C17	D6366	B53	L5831	E4	R3135	D50	R3405	E10	R3552	D25	X1200	B12
C2253	D12	C2500	A26	D6367	B54	L5832	D4	R3136	D50	R3405A	B44	R3557	C30	X1660	B35
C2330	C32	C2501	A27	D6447	E20	L5833	E30	R3141	E35	R3406	E11	R3561	B30	X1831	E4
C2331	C31	C2502	A27	D6449	E17	L5835	A11	R3149	D35	R3406A	A43	R3562	B30	ZD6001	D31
C2340	C32	C2503	A28	D6460	E15	L9611	C31	R3150	D35	R3407	B43	R3563	B32	ZD6161	D51
C2341	B24	C2505	A28	D6461	E15	L9672	D29	R3150A	B2	R3408	E11	R3565	C32	ZD6206	C19
C2342	C22	C2507	C29	D6465	E15	L9678	E29	R3151	A1	R3408A	A45	R3566	D25	ZD6401	E11
C2343	C23	C2508	A29	D6466	E15	LC5501	A26	R3152	C2	R3410	E11	R3569	D26	ZD6445	E21
C2344	C22	C2515	B28	D6467	A31	M0223	A16	R3153	C2	R3411	E11	R3580	B25	ZD6448	E20
C2345	D21	C2520	B26	D6468	E13	M0223	A18	R3154	E34	R3412	B45	R3591	C30	ZD6453	D19
C2360	B54	C2521	C25	D6469	B31	M0223	A18	R3156	D34	R341					

PLACEMENT CHART

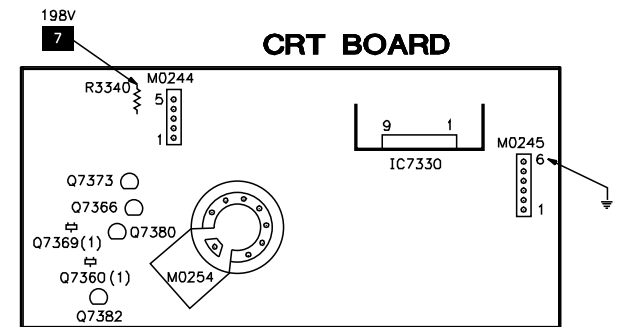
MAIN BOARD - TOP VIEW



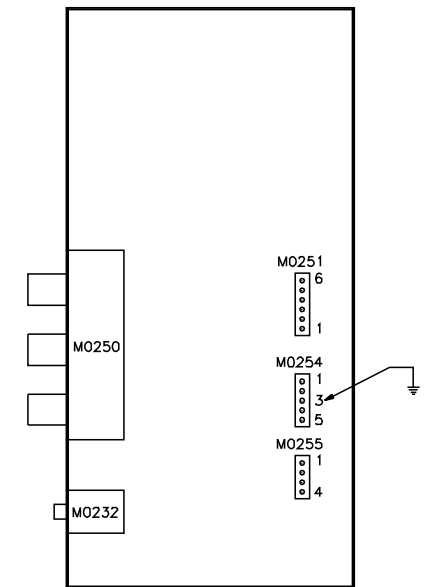
MAIN BOARD - BOTTOM VIEW



CRT BOARD



SIDE JACK PANEL BOARD

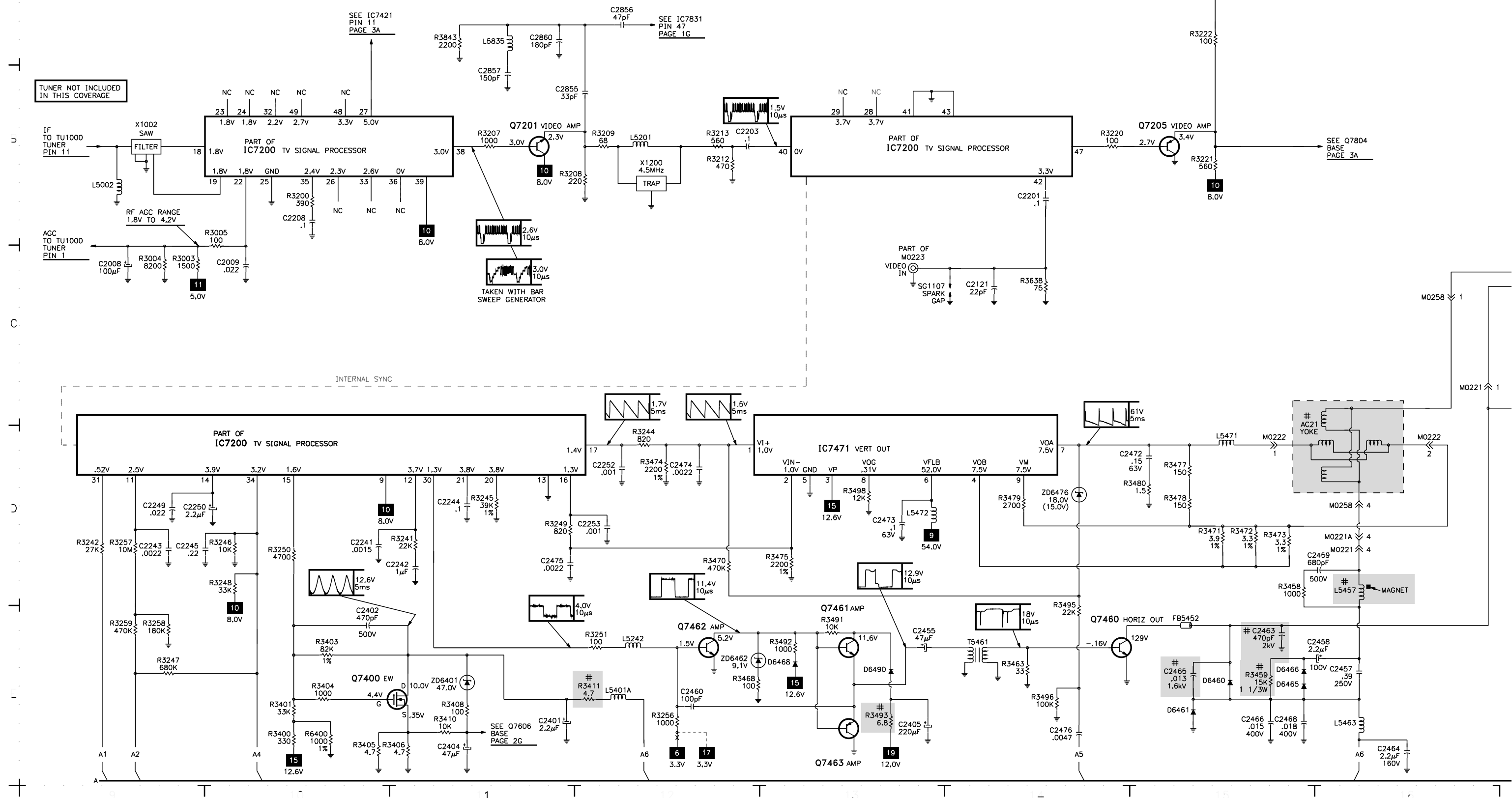


(1) LOCATED ON OTHER SIDE OF BOARD

PHILIPS **MODEL 32PT663R99 (CHASSIS L01.1UAC)**



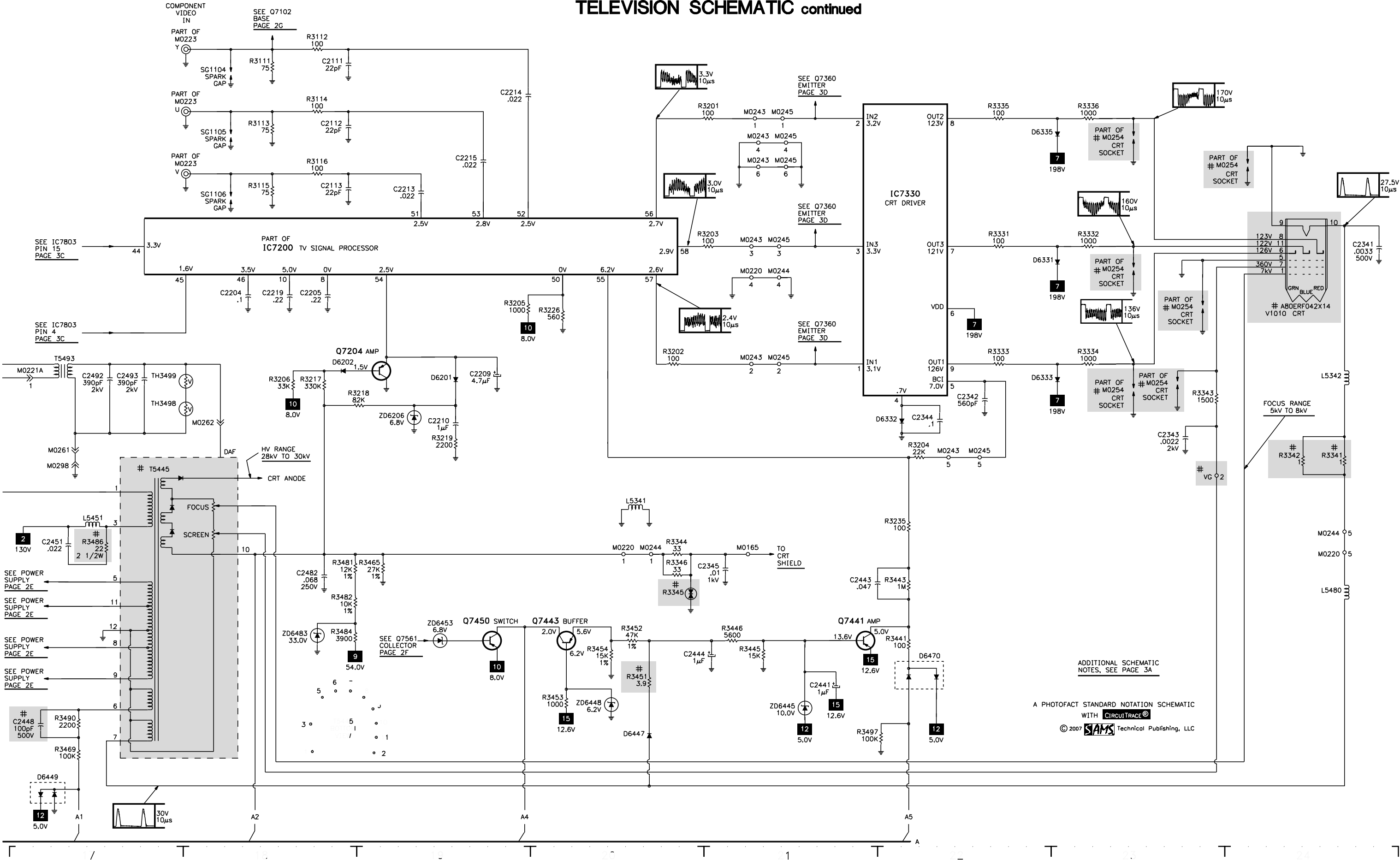
© 2007 **SAMS** Technical Publishing, LLC



C

D

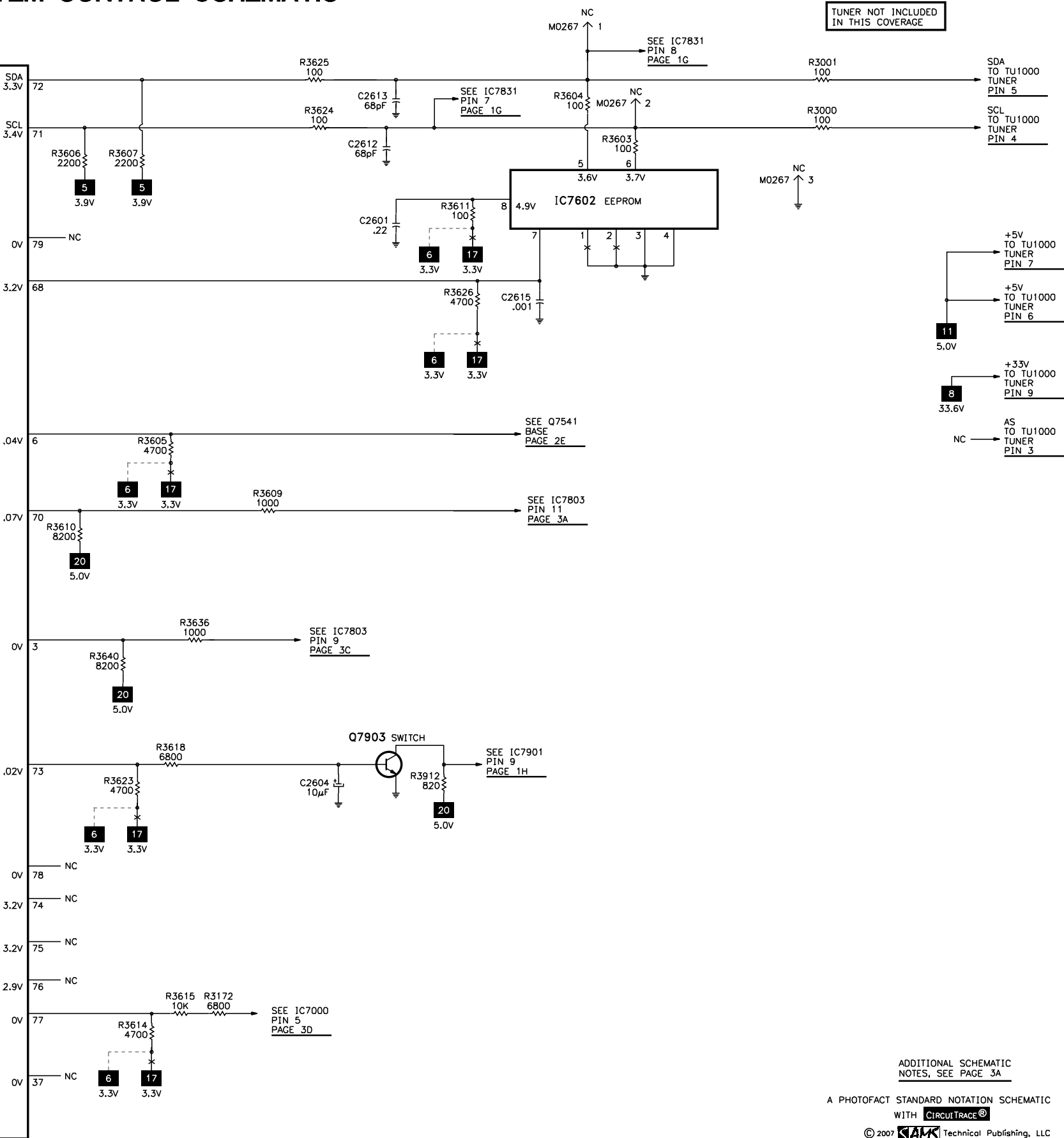
TELEVISION SCHEMATIC continued



E



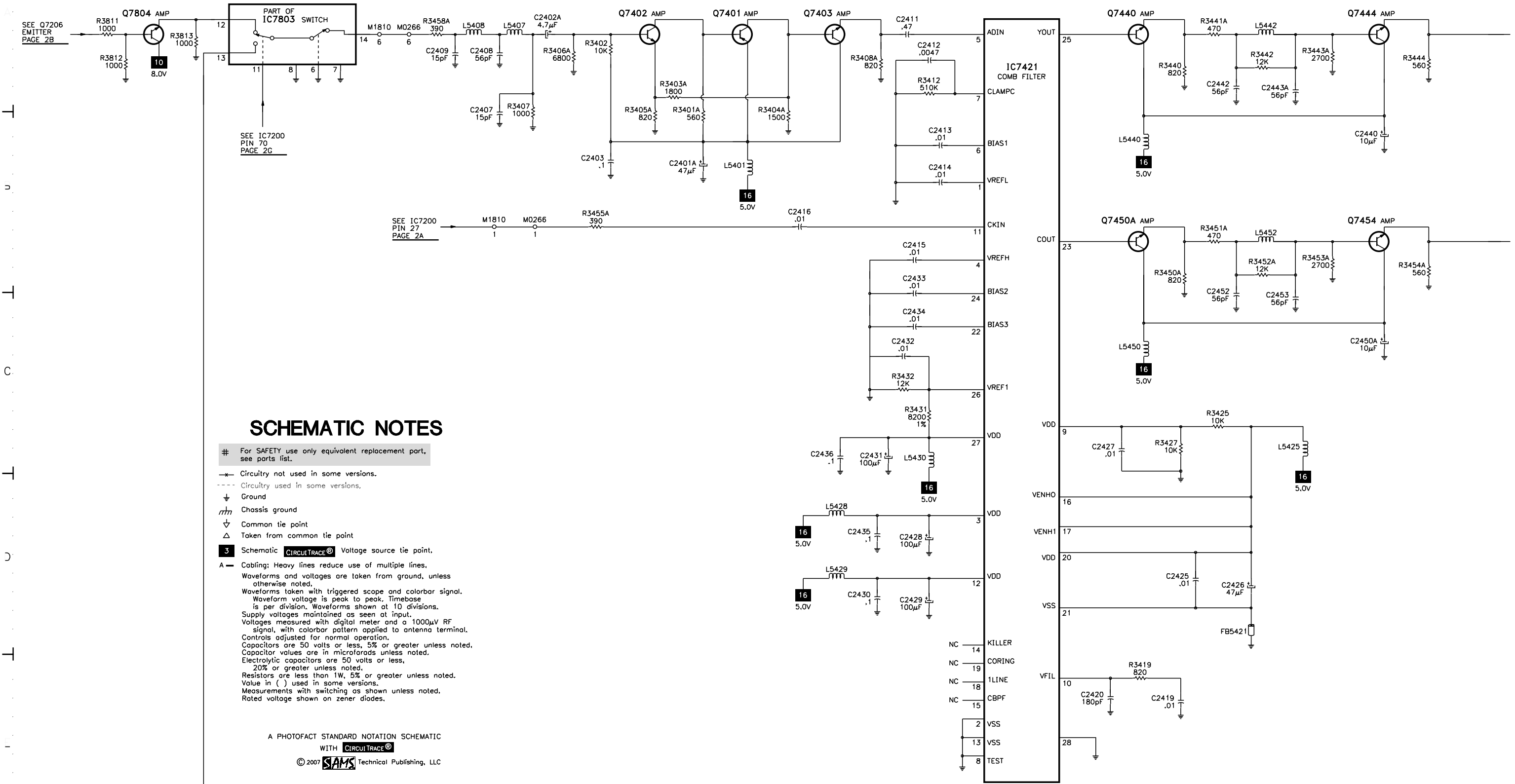
H



MODEL 32PT663R99 (CHASSIS L01.1UAC)

© 2007  Technical Publishing, LLC

COMB FILTER SCHEMATIC



PARTS LIST

Item No.	Type No.	Mfr. Part No.	Notes	Item No.	Type No.	Mfr. Part No.	Notes
D6091	BAT254	9340 453 90115	-	Q7440	BC847B	3198 010 42030	-
D6150	BAS316	3198 010 10630	-	Q7441	BC857B	3198 010 42150	-
D6201, 02	BAS316	3198 010 10630	-	Q7443	BC557B	3198 020 40110	-
D6331	BAV21	3198 010 10070	-	Q7444	BC847B	3198 010 42030	-
D6332	BAS316	3198 010 10630	-	Q7450	PDTA114ET	3198 010 44010	-
D6333, 35	BAV21	3198 010 10070	-	Q7450A	BC847B	3198 010 42030	-
D6365, 66	BAT85	9336 247 60133	-	Q7454	BC847B	3198 010 42030	-
D6367	BAV99	3198 010 10620	-	Q7460	BU4508DX	9340 550 92127	-
D6447	1N4148	3198 010 10010	-	Q7461	BC337-25	3198 020 43530	-
D6449	BAV99	3198 010 10620	-	Q7462	PDTC143ZT	9340 547 00215	-
D6460	BY228/24	9340 559 50112	-	Q7463	BC327-25	3198 020 43430	-
D6461	RGP30J-L7004	9338 617 60682	-	Q7480, 82	BD135	3198 020 41010	-
D6465, 66	BAV21	3198 010 10070	-	Q7521	FQPF9N50	9322 187 16687	-
D6467, 68	BAS316	3198 010 10630	-	Q7522	BC847B	3198 010 42030	-
D6469	BYD33J	9337 237 20133	-	Q7540	BC547B	3198 020 40030	-
D6470	BAV99	3198 010 10620	-	Q7541	PDTC114ET	9340 310 10215	-
D6485	BYD33J	9337 234 20133	-	Q7542	BC857B	3198 010 42150	-
D6486	EGP20DL-5100	9322 164 42682	-	Q7561	PDTC143ZT	9340 547 00215	-
D6487	BYD33D	9337 234 00133	-	Q7580	BC857B	3198 010 42150	-
D6488	EGP20DL-5100	9322 164 42682	-	Q7606	PDTC143ZT	9340 547 00215	-
D6490	BYD33J	9337 234 20133	-	Q7804	BC847B	3198 010 42030	-
D6500	GBU4JL-7002	9322 132 55667	-	Q7903	BC847B	3198 010 42030	-
D6520	BYD33D	9337 234 00133	-	ZD6001	BZX79-C33	3198 010 23390	-
D6523	1N4148	3198 010 10010	-	ZD6161	BZX79-C6V8	3198 010 26880	-
D6524, 25	1N5062	3198 010 10120	-	ZD6206	BZX384-C6V8	3198 020 56880	-
D6560	BYV29X-500	9340 555 59127	-	ZD6401	-	3198 010 24790	-
D6563	BAS316	3198 010 10630	-	ZD6445	BZX284-C10	3198 020 51090	-
D6565	BAV70	9331 849 10215	-	ZD6448	BZX79-B6V2	9331 668 30133	-
D6566	1N4148	3198 010 10010	-	ZD6453	BZX384-C6V8	3198 020 56880	-
D6569, 80	BAS316	3198 010 10630	-	ZD6462	-	9331 177 80133	-
D6582	STPS10L60D	9322 175 70667	-	ZD6476	-	3198 010 21890	-
D6691	LTL-10234WHCR	9322 185 69682	-	ZD6481	BZX79-C5V6	3198 010 25680	-
D6831	1N4148	3198 010 10010	-	ZD6482	BZX79-C9V1	9331 177 80133	-
IC7000	TDA8941P/N1	9352 628 51112	-	ZD6483	BZX79-C33	3198 010 23390	-
IC7200	TDA9588H/N1/31/1298	9352 742 85557	-	ZD6526	BZX284-C22	3198 020 52290	-
IC7330	TDA6107JF/N3	9352 713 37112	-	ZD6540	BZX79-B6V2	9331 668 30133	-
IC7421	TC90A53N	9322 182 18682	-	ZD6541	PDZ-10B	3198 020 51090	-
IC7471	TDA8359J/N2	9352 701 64112	-	ZD6570	BZX384-C6V8	3198 020 56880	-
# IC7515	TCET1103(G)	9322 140 14667	-				
IC7520	TEA1507P/N1	9352 673 56112	-				
IC7560	L78L33ACZ	9322 134 92676	-				
IC7602	M24C08-WBN6	9322 154 38682	-				
IC7802, 03	HEF4053BT	9333 729 60653	-				
IC7831	MSP3425G-PO-B8-V3	9322 187 89682	-				
IC7901	AN7580	9322 166 29682	-				

PARTS LIST continued

Item No.	Function/Rating	Mfr. Part No.	Notes
# F1500	Fuse	2422 086 10914	4Amp, 250V
FB5204, 05, 06	Ferrite Bead	3198 018 90020	-
FB5376	Ferrite Bead	3198 018 90010	-
FB5421	Ferrite Bead	3198 018 90070	-
FB5452	Ferrite Bead	3198 018 90020	-
FB5521	Ferrite Bead	3198 018 90010	-
FB5560, 62, 64	Ferrite Bead	3198 018 90010	-
IC6692	Receiver	9322 127 54667	Remote, TSOP1836UH3V
L5001	27µH	3198 018 22790	-
L5002	-	3198 018 18270	-
L5201	6.8µH	3198 018 16880	-
L5242	10µH	3198 018 11090	-
L5341	22µH	2422 535 97333	-
L5342	27µH	3198 018 22790	-
L5401	1mH	3198 018 71020	-
L5401A	10µH	3198 018 31090	-
L5407	33µH	3198 018 33390	-
L5408	33µH	3198 018 13390	-
L5425	10µH	3198 018 31090	-
L5428	10µH	3198 018 11090	-
L5429	10µH	3198 018 31090	-
L5430, 40	10µH	3198 018 31090	-
L5442	22µH	3198 018 12290	-
L5450	10µH	3198 018 31090	-
L5451	22µH	3198 018 72290	-
L5452	33µH	3198 018 13390	-
# L5457	25µH	2422 535 91028	-
L5463	-	3128 138 37021	-
L5471	6.8µH	3198 018 76880	-
L5472	3.3µH	3198 018 23380	-
L5480	18µH	2422 535 97332	-
L5561	27µH	2422 535 95366	-
L5602, 03, 04	5.6µH	3198 018 15680	-
L5810	10µH	3198 018 51090	-
L5831, 32, 33	6.8µH	3198 018 16880	-
L5835	12µH	3198 018 31290	-
L9611	27µH	3198 018 22790	-
L9672, 78	22µH	3198 018 22290	-
# LC5501	Filter	2422 549 43432	-
M0223	Jack	2422 026 05236	Assembly
M0225	Socket	2422 026 04926	S-Video
M0232	Jack	2422 026 04747	Headphone
M0250	Jack	2422 026 04815	Assembly
# M0254	Socket	2422 500 80058	CRT, 9 Pins
M0269	Jack	2422 026 05182	Assembly
R3159	1200 1% 1/8W	2322 734 61202	-
R3245	39K 1% 1/16W	2322 704 63903	-
# R3340	10 5% 1/2W	2306 207 03109	-
# R3341, 42	1 5% 1/3W	2306 204 03108	-
# R3345	Varactor	2322 593 13507	-
R3385	10K 5% 5W	2322 257 41103	-
# R3386	10 5% 1/3W	2306 204 03109	-
R3403	82K 1% 3/5W	2312 915 18203	-
# R3411	4.7 5% 1/3W	2306 204 03478	-
R3431	8200 1% 1/16W	2322 704 68202	-
# R3451	3.9 5% 1/3W	2306 204 03398	-
R3452	47K 1% 3/5W	2312 915 14703	-
R3454	15K 1% 3/5W	2312 915 11503	-
# R3455	6.8 5% 1 1/3W	3198 012 26880	-

Item No.	Function/Rating	Mfr. Part No.	Notes
# R3459	15K 5% 1 1/3W	3198 012 21530	-
R3465	27K 1% 3/5W	2312 915 12703	-
R3471	3.9 1% 3/5W	2312 915 13908	-
R3472, 73	3.3 1% 3/5W	2312 915 13308	-
R3474, 75	2200 1% 3/5W	2312 915 12202	-
R3481	12K 1% 3/5W	2312 915 11203	-
R3482	10K 1% 3/5V	2312 915 11003	-
# R3486	22 5% 2 1/2W	3198 012 32290	-
# R3488	4.7 5% 1/2W	2306 207 03478	-
# R3493	6.8 5% 1/3W	2306 204 03688	-
# R3494	4.7 5% 1/2W	2306 207 03478	-
# R3500, 01	3.3M 5% 1/2W	2322 242 13335	-
# R3506	1.5M 5% 1/2W	2322 242 13155	-
# R3508	220 20% 1/2W	3198 013 02210	-
# R3523	100 5% 1/3W	2306 204 03101	-
# R3527	.33 5% 3/5W	3198 012 13370	-
# R3532	2200 5% 1/3W	2306 204 03222	-
R3543	82K 1% 3/5W	2312 915 18203	-
R3544	4700 1% 1/8W	2322 734 64702	-
# R3565	220 5% 1W	3198 012 12210	-
# R3591	10 5% 1/3W	2306 204 03109	-
R6400	1000 1% 3/5W	2312 915 11002	-
# RL1515	Relay	2422 132 07444	Degaussing
ROTATION	-	-	-
S1091	Switch	2422 128 02742	Channel +
S1092	Switch	2422 128 02742	Channel -
S1093	Switch	2422 128 02742	Volume +
S1094	Switch	2422 128 02742	Volume -
S1606	Switch	2422 128 02742	Power
SCAVEM	-	-	-
SP3100, 01	Speaker	3139 128 76081	8 Ohms, 10W
# SP3507	Surge Protector	2422 549 43073	-
# T5445 (2)	Horizontal Output	2422 531 02602	-
T5461	Horizontal Driver	2422 531 02465	-
T5493	DAF	3128 138 34581	-
# T5520	Power	2422 531 02562	-
TH3498, 99	Varactor	2322 592 14217	-
# TH3504	PTC	2122 663 00019	-
# TH3510	NTC	2122 612 00056	-
# TU1000	Tuner	2422 542 90098	-
# V1010	CRT	9301 927 10539	A80ERF042X14
X1002	Filter	2422 549 44518	SAW
X1200	Trap	2422 549 40807	4.5MHz
X1660	Crystal	2422 543 01203	12MHz
X1831	Resonator	2422 543 00842	18.432MHz
	PC Board	3139 177 26561	2D 3 Line Comb Filter
	PC Board	3139 187 10081	DAF
	PC Board	3139 187 28041	Front Interface
	PC Board	3139 187 14441	Main
	PC Board	3139 187 15141	Side Jack Panel
	PC Board	3139 187 15841	Top Control Panel
	Transmitter	3139 228 88003	Remote, RC19036002/01

For SAFETY use only equivalent replacement part.

(1) Bonded part of CRT.

(2) Screen and focus controls are part of T5445.

PHILIPS

MODEL 32PT663R99 (CHASSIS L01.1UAC)