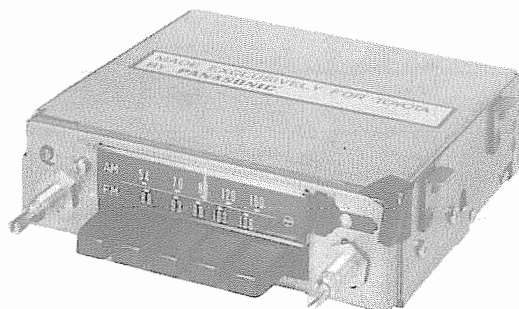


PHOTOFACT[®] with

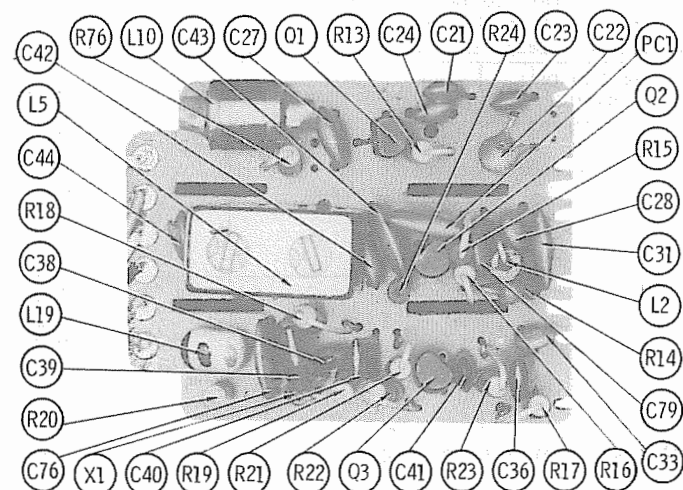
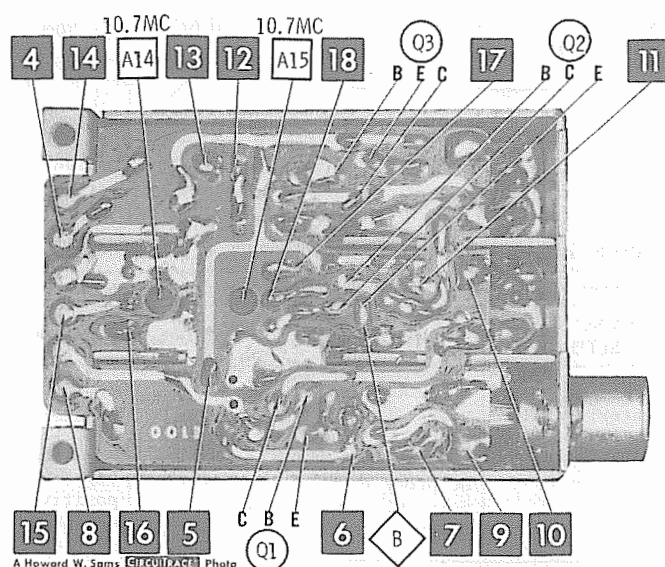
CIRCUITRACE[®]

For Supplier Address See PHOTOFACT Index

NOTE: Manufacturer Part Numbers Shown Are MATSUSHITA



MODEL 86120-20110 (CR-528FT) (Corona)



TOYOTA MODEL 86120-20110

HOWARD W. SAMS & CO., INC. Indianapolis, Indiana 46206

© 1972 Howard W. Sams & Co., Inc. Printed in U. S. of America 2AK167

ALIGNMENT INSTRUCTIONS

Check for specified source voltage.
Use only enough generator output
to provide a usable indication.
Suggested Alignment Tools:

GENERAL CEMENT:

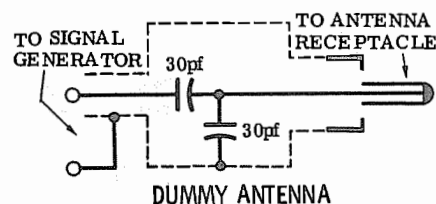
A1 thru A6, A17, A18, A19#9440
A7 thru A16#9296, 9297, 9300

PUSH-BUTTON ADJUSTMENT

1. Pull button out.
2. Tune manually to desired station.
3. Press button in firmly.
4. Repeat for remaining buttons.

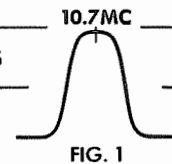
	GENERATOR COUPLING	GENERATOR FREQUENCY	RADIO DIAL SETTING	INDICATOR	ADJUST	REMARKS
1.	High side thru .1mfd to point \diamond A, low side to ground.	262KC 400 cycle modulation	High freq. end stop.	Output meter across voice coil.	A1,A2	Adjust for maximum.
2.	Thru dummy antenna to antenna input.	600KC	Tune to signal	"	A3	"
3.	Thru dummy antenna to antenna input.	1615KC	High freq. end stop.	Output meter across voice coil	A4,A5, A6	Adjust for maximum. Repeat Steps 2 and 3 until no further improvement is noted

With radio installed in car and antenna extended 33", tune in a weak station near 1400KC and adjust A6 for maximum output. Antenna adjustment (A6) is located on bottom left rear corner.



FM IF ALIGNMENT USING AM SIGNAL GENERATOR—SELECTOR IN FM POSITION

High side of generator thru .001mfd to point \diamond B, low side to ground.					
	GENERATOR FREQUENCY	RADIO DIAL SETTING	INDICATOR	ADJUST	REMARKS
4.	10.7MC Unmodulated	Point of non-interference	DC probe of VTVM to point \diamond C, common to ground.	A7 Thru A15	Adjust for maximum.
5.	"	"	DC probe of VTVM to point \diamond D, common to ground.	A16	Adjust for zero reading. A positive or negative reading will be obtained on either side of the correct setting.

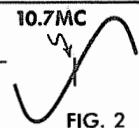


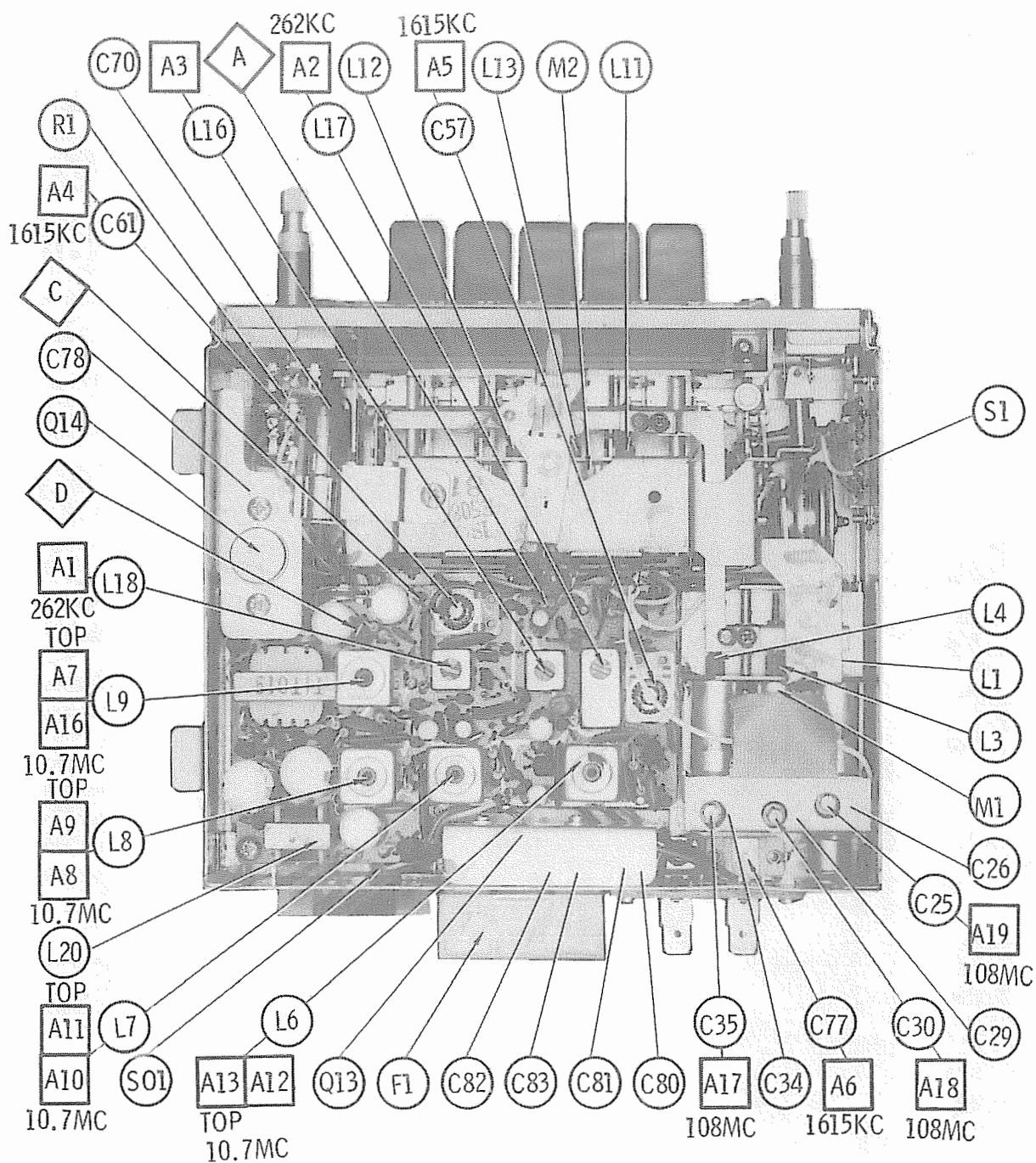
FM IF ALIGNMENT USING FM SIGNAL GENERATOR—SELECTOR IN FM POSITION

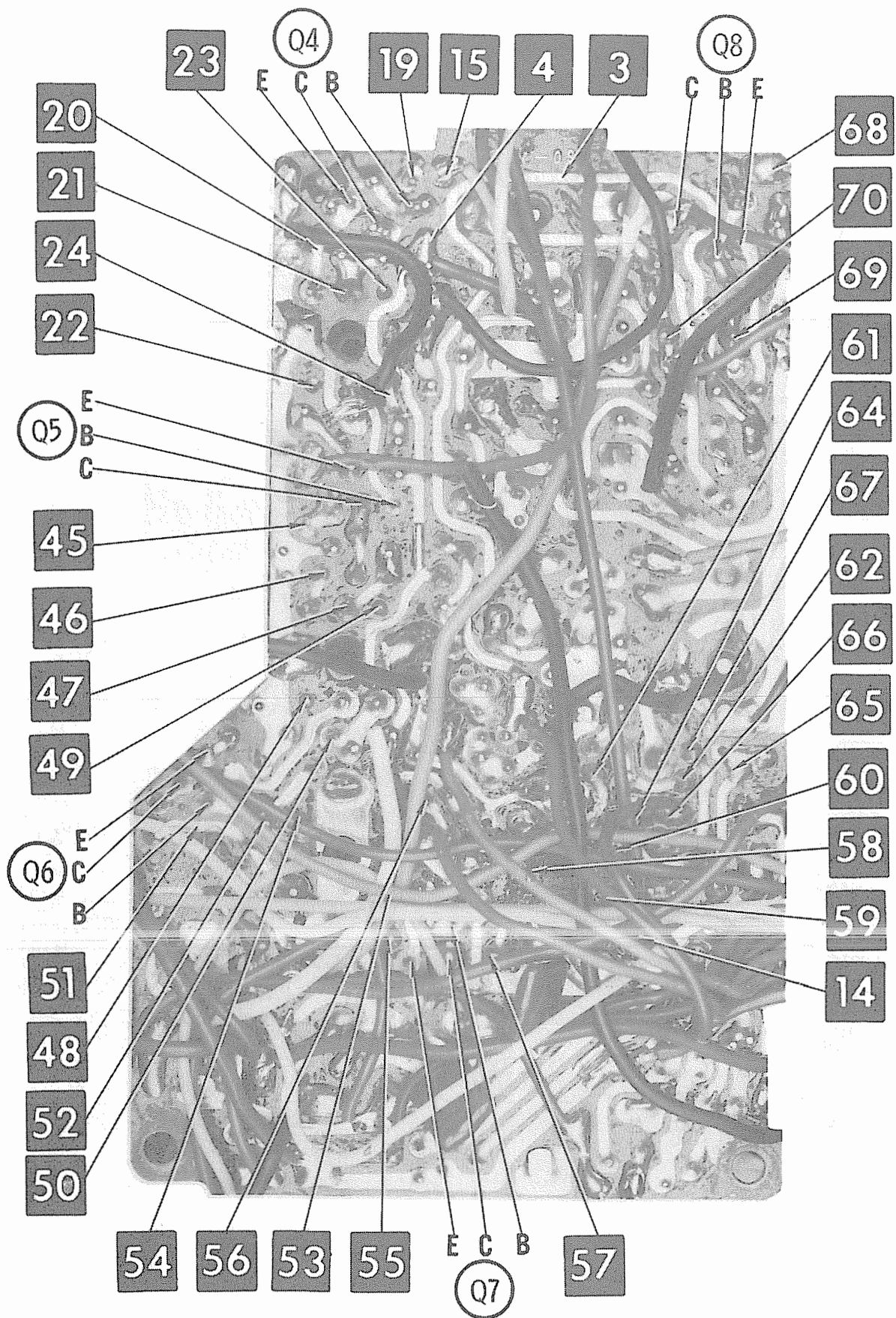
High side of generator thru .001mfd to point \diamond B, low side to ground. Use only enough marker signal for indication. Use 60 cycle frequency modulated signal with 450KC sweep. Use 60 cycle sawtooth voltage in scope for horizontal deflection.					
	GENERATOR FREQUENCY	RADIO DIAL SETTING	INDICATOR	ADJUST	REMARKS
4.	10.7MC 450KC Sweep	Point of non-interference	Vert. amp of scope to point \diamond C, low side to ground.	A7 Thru A15	Disconnect stabilizing capacitor C 5. Adjust for maximum gain and symmetry of response similar to Fig. 1 with marker as shown. Reconnect C 5.
5.	"	"	Vert. amp of scope to point \diamond D, low side to ground.	A16	Adjust A16 (secondary) to place marker at center of "S" curve similar to Fig. 2. Readjust A7 (primary) for maximum amplitude and straightness of line.

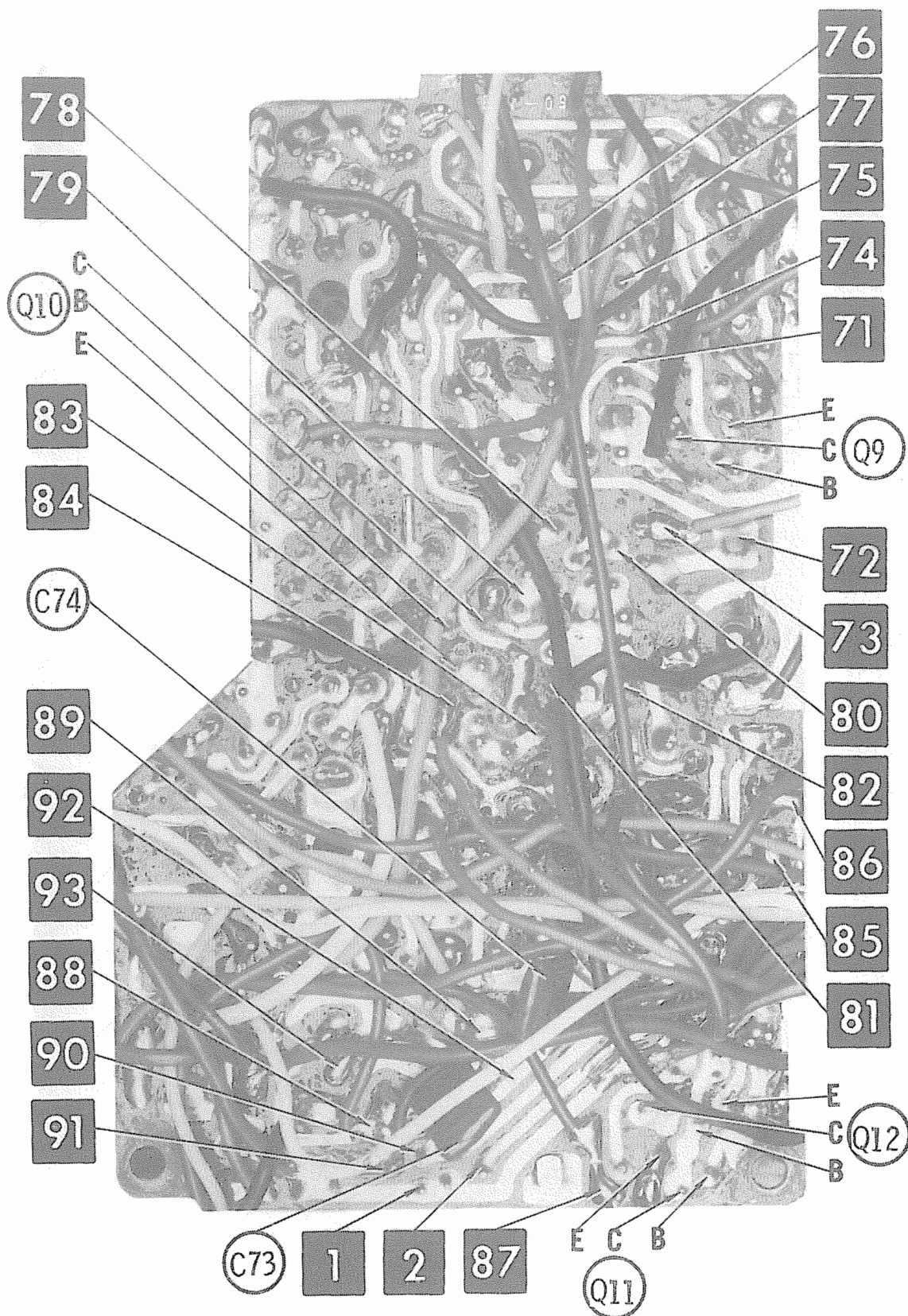
FM RF ALIGNMENT—SELECTOR IN FM POSITION

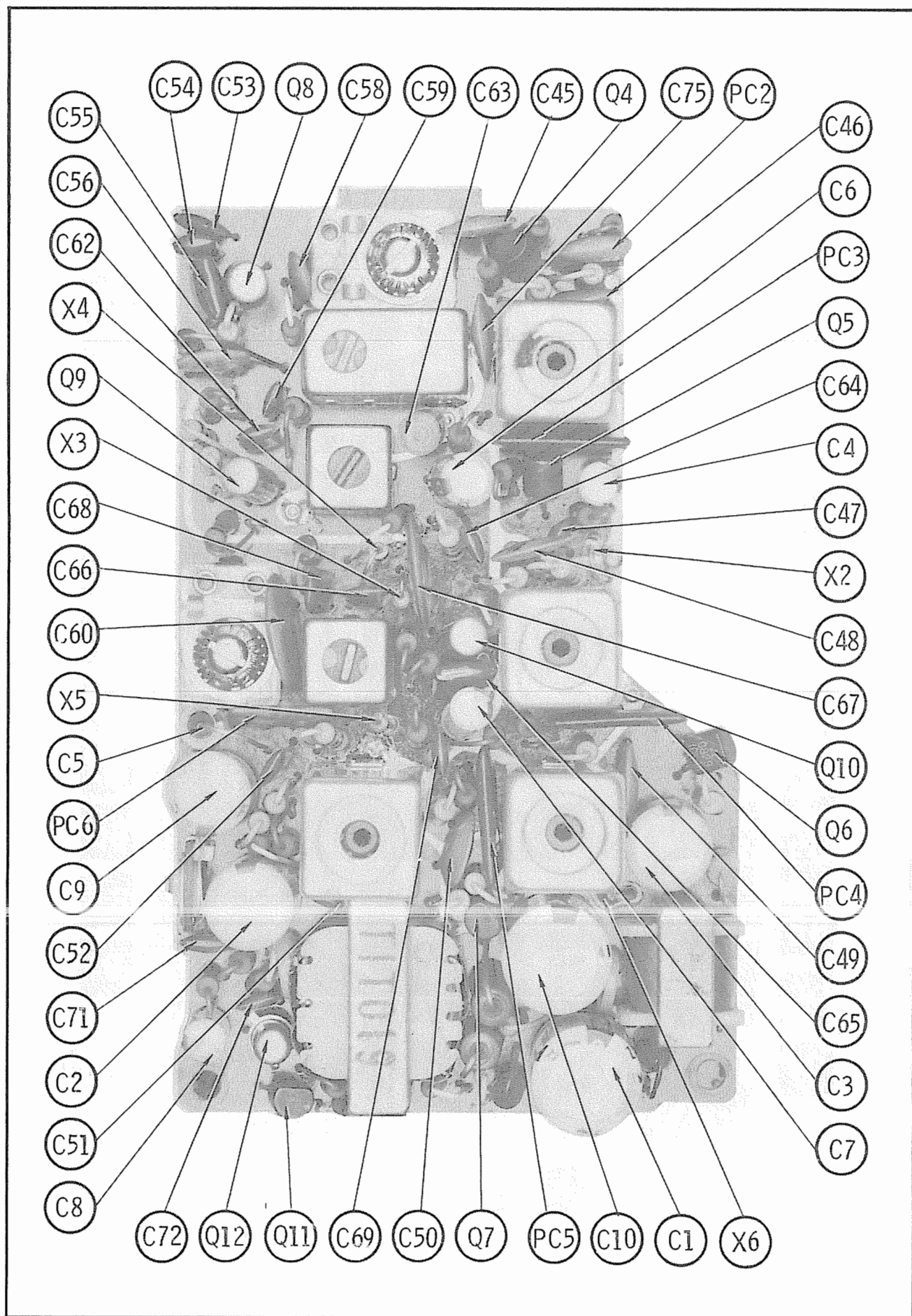
Connect generator across antenna terminals with 120-ohm carbon resistor in series with each lead.					
	GENERATOR FREQUENCY	RADIO DIAL SETTING	INDICATOR	ADJUST	REMARKS
6.	108MC	High freq. end	DC probe of VTVM to point \diamond C, common to ground.	A17, A18, A19	Adjust for maximum.



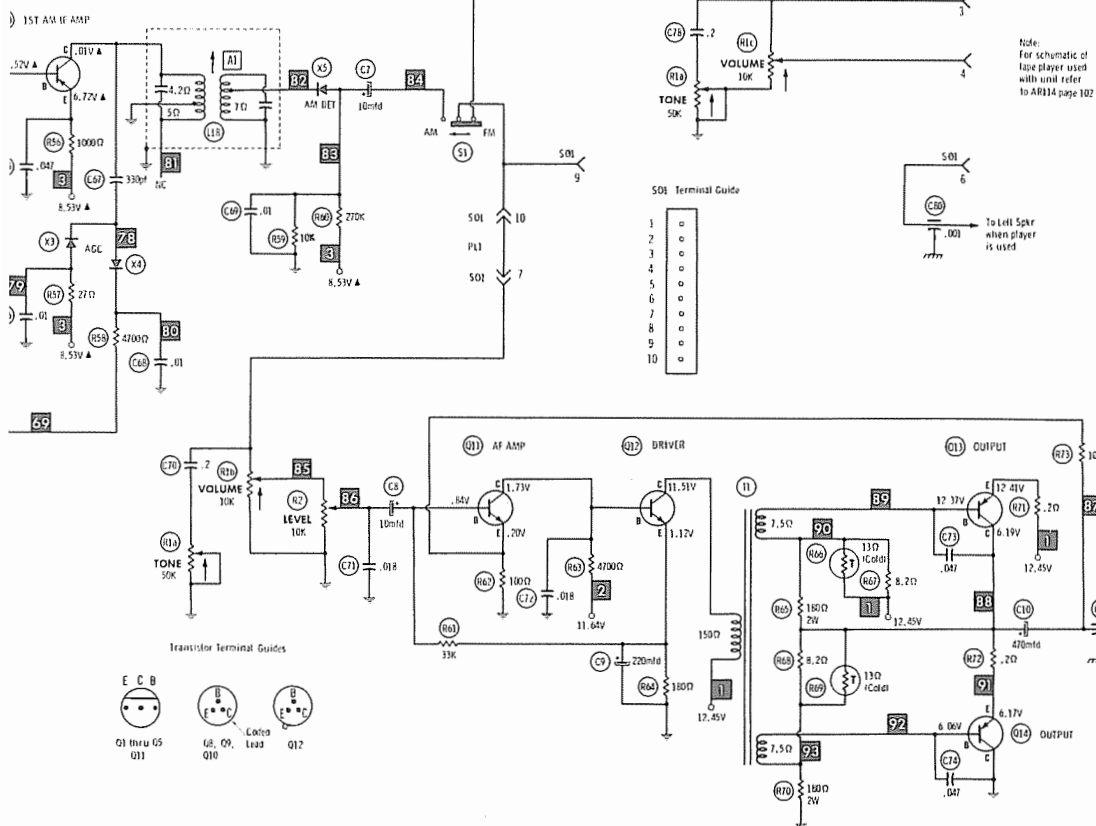












PARTS LIST AND DESCRIPTION

(When ordering parts, state Model, Part Number, and Description.)

Replacement parts shown may be superseded by the availability of newly introduced replacements.

Have your local distributor check Sams COUNTER FACTS® for the most up-to-date replacement.

TRANSISTORS

ITEM No.	TYPE No.	FUNCTION	REPLACEMENT DATA					
			MFGR. PART No.	GENERAL ELECTRIC PART No.	INTERNATIONAL RECTIFIER PART No.	MOTOROLA PART No.	RCA PART No.	SYLVANIA PART No.
Q1	2SC829	FM RF Amp		GE-17	IRTR-51	HEP50	SK3018	ECG 107
Q2	2SC829	FM Mixer		GE-17	IRTR-51	HEP50	SK3018	ECG 107
Q3	2SC829	FM Oscillator		GE-17	IRTR-51	HEP50	SK3018	ECG 107
Q4	2SC829	1st FM IF Amp		GE-17	IRTR-51	HEP50	SK3018	ECG 107
Q5	2SC829	2nd FM IF Amp		GE-17	IRTR-51	HEP50	SK3018	ECG 107
Q6	2SC829	3rd FM IF Amp		GE-17	IRTR-51	HEP50	SK3018	ECG 107
Q7	2SC829	4th FM IF Amp		GE-17	IRTR-51	HEP50	SK3018	ECG 107
Q8	2SA102	AM RF Amp		GE-9	TR-17	HEP638	SK3007	ECG 126
Q9	2SA102	AM Converter		GE-9	TR-17	HEP638	SK3007	ECG 126
Q10	2SA102	AM IF Amp		GE-9	TR-17	HEP638	SK3007	ECG 126
Q11	2SC828	AF Amp		GE-20	TR-24	HEP55	SK3020	ECG 123A
Q12	2SC538	Driver		GE-17	TR-24	HEP55	SK3020	ECG 123A
Q13	2SB481	Output (1)		GE-31MP*	IRTR-50	HEP642	SK3086*	ECG 131MP*
Q14	2SB481	Output (1)			IRTR-50	HEP642		

(1) When replacing, apply silicone grease to both sides of insulator. Tighten mounting screws securely.

* Matched pair.

POWER RECTIFIERS & SIGNAL DIODES

ITEM No.	MFGR. PART OR TYPE No.	REPLACEMENT DATA				NOTES
		GENERAL ELECTRIC PART No.	INTERNATIONAL RECTIFIER PART No.	RCA PART No.	SYLVANIA PART No.	
X1	1S351					Varactor
X2	0A90	1N60	1N60	SK3088	ECG 109	
X3	0A90	1N60	1N60	SK3088	ECG 109	
X4	0A90	1N60	1N60	SK3088	ECG 109	
X5	0A90	1N60	1N60	SK3088	ECG 109	
X6	AW01-08J	GE-X11	Z-1108		ECG 5072	Zener

ELECTROLYTIC CAPACITORS

ITEM No.	RATING	REPLACEMENT DATA						
		PART No.	AEROVOX PART No.	CENTRALAB PART No.	CORNELL-DUBILIER PART No.	GENERAL ELECTRIC PART No.	MALLORY PART No.	SPRAGUE PART No.
C1	470 16V	ECEA16V470H	PRS1220	EA15-500	WBR500-16	QT1-30A	MTV500DN15	TL-1166
C2	220 16V	ECEA16V220N	CRE481A	EA15-250	WBR250-16	MT1-23	MTV2000E15	TE-1164
C3	220 10V	ECEA10V220N	CRE481A	EA15-250	WBR250-16	MT1-23	MTV2000B10	TE-1104
C4	10 10V	ECEA10V10N	MCD-70	EP15-10	WBR10-25	MT1-5	MTV10CB50	TE-1128
C5	10 10V	ECEA10V10N	MCD-70	EP15-10	WBR10-25	MT1-5	MTV10CB50	TE-1128
C6	33 6V	ECEA6V33N	MCD-110	EP6-25	WBR35-50	MT1-13	MTV30CB25	TE-1093
C7	10 10V	ECEA10V10N	MCD-70	EP15-10	WBR10-25	MT1-5	MTV10CB50	TE-1128
C8	10 10V	ECEA10V10N	MCD-70	EP15-10	WBR10-25	MT1-5	MTV10CB50	TE-1128
C9	220 6V	ECEA6V220N	MCD-210	EA6-250	WBR250-16	MT1-23	MTV2000B10	TE-1104
C10	470 16V	ECEA16V470N	PRS1220	EA15-500	WBR500-16	QT1-30A	MTV500DN15	TL-1166

CAPACITORS

ITEM No.	RATING	REMARKS	REPLACEMENT DATA					
			AEROVOX PART No.	ARCO/ELMENCO PART No.	CENTRALAB PART No.	CORNELL-DUBILIER PART No.	MALLORY PART No.	SPRAGUE PART No.
C21	15			CCT0-150	DTZ-15	NP015	CN0415	10TCC-Q15
C22	25				DTZ-25		CN0425	10TCC-Q25
C23	10				DTZ-10	NP010	CN0410	10TCC-Q10
C24	3			CCT0-100				10TCC-V30
C25	1-10							

PARTS LIST AND DESCRIPTION (CONTINUED)

(When ordering parts, state Model, Part Number, and Description.)

Replacement parts shown may be superseded by the availability of newly introduced replacements.
Have your local distributor check Sams COUNTER FACTS® for the most up-to-date replacement.

CAPACITORS (cont)

ITEM No.	RATING	REMARKS	REPLACEMENT DATA					
			AEROVOX PART No.	ARCO/ELMENC0 PART No.	CENTRALAB PART No.	CORNELL-DUBILIER PART No.	MALLORY PART No.	SPRAGUE PART No.
C26	15			CCT0-150	DTZ-15	NP015	CN0415	10TCC-Q15
C27	500		GPD X5F501K	CCD-501	DM-501	GP500	GP350	10TS-T50
C28	4					NP03P9		10TCC-V39
C29	500		GPD X5F501K	CCD-501	DM-501	GP500	GP350	10TS-T50
C30	1-10							
C31	.01		TTP-01	CCD-103	CK-103	MGP01	TA110	TG-S10
C32	15			CCT0-150	DTZ-15	NP015	CN0415	10TCC-Q15
C33	1		GPD C0J1R0D		TCZ-1		CN0510	10TCC-V10
C34	.01		TTP-01	CCD-103	CK-103	MGP01	TA110	TG-S10
C35	1-10							
C36	.01		TTP-01	CCD-103	CK-103	MGP01	TA110	TG-S10
C37	5					NP05		10TCC-V50
C38	4					NP03P9		10TCC-V39
C39	.047		TTP-05	CCD-503	CK-503	MGP05	TA150	TGL-S50
C40	.01		TTP-01	CCD-103	CK-103	MGP01	TA110	TG-S10
C41	3							10TCC-V30
C42	56				TCZ-56		CN0456	10TCC-Q56
C43	.01		TTP-01	CCD-103	CK-103	MGP01	TA110	TG-S10
C44	56				TCZ-56		CN0456	10TCC-Q56
C45	.01		TTP-01	CCD-103	CK-103	MGP01	TA110	TG-S10
C46	.01		TTP-01	CCD-103	CK-103	MGP01	TA110	TG-S10
C47	10			CCT0-100	DTZ-10	NP010	CN0410	10TCC-Q10
C48	.01		TTP-01	CCD-103	CK-103	MGP01	TA110	TG-S10
C49	.01		TTP-01	CCD-103	CK-103	MGP01	TA110	TG-S10
C50	.01		TTP-01	CCD-103	CK-103	MGP01	TA110	TG-S10
C51	.01		TTP-01	CCD-103	CK-103	MGP01	TA110	TG-S10
C52			TTP-01	CCD-103	CK-103	MGP01	TA110	TG-S10
C53	.0047		GPD X5R472K	CCD-472	DD-472G	GP4700	JF247	10TS-D47
C54	.0033		GPD X5R332K	CCD-332	DD-332	GP3300	JF233	10TS-D33
C55	.047		TTP-05	CCD-503	CK-503	MGP05	TA150	TGL-S50
C56	.2				UK10-204		MAG12022	HY-370
C57		#YECTTT70						
C58	100			CCT0-101	DTZ-100	NP0100	CN0310	10TCC-T10
C59	.0047		GPD X5R472K	CCD-472	DD-472G	GP4700	JF247	10TS-D47
C60	270		GPD X5F271K	CCD-270	DD-271	GP270	GP327	10TS-T27
C61		#YECTTT70						
C62	.01		TTP-01	CCD-103	CK-103	MGP01	TA110	TG-S10
C63	100			OM-15-101	CPR-100J	C05F101J500	SX310	MS-31
C64	.01		TTP-01	CCD-103	CK-103	MGP01	TA110	TG-S10
C65	.04				DD-403		GP140	
C66	.01		TTP-01	CCD-103	CK-103	MGP01	TA110	TG-S10
C67	330		GPD X5F331K	CCD-331	DD-331	GP330	GP333	10TS-T33
C68	.01		TTP-01	CCD-103	CK-103	MGP01	TA110	TG-S10
C69	.01		TTP-01	CCD-103	CK-103	MGP01	TA110	TG-S10
C70	.2				UK10-204		MAG12022	HY-370
C71	.018		TTP-02	CCD-203	CK-203	MGP02	TA120	TG-S20
C72	.018		TTP-02	CCD-203	CK-203	MGP02	TA120	TG-S20
C73	.047		TTP-05	CCD-503	CK-503	MGP05	TA150	TGL-S50
C74	.047		TTP-05	CCD-503	CK-503	MGP05	TA150	TGL-S50
C75	.01		TTP-01	CCD-103	CK-103	MGP01	TA110	TG-S10
C76	.01		TTP-01	CCD-103	CK-103	MGP01	TA110	TG-S10
C77		#YECPPT100						
C78	.2				UK10-204		MAG12022	HY-370
C79	150		GPD X5F151K	CCD-151	DD-151	GP150	GP315	10TS-T15
C80	.001	#YECCL510212						
C81	.001	#YECCL510212						
C82	.001	#YECCL510212						
C83	.001	#YECCL510212						

Toyota Part Number.

TOYOTA MODEL 86120-20110

CONTROLS (All wattages 1/2 watt, or less, unless listed)

ITEM No.	FUNCTION	RESIST-ANCE	REPLACEMENT DATA			
			MFRG. PART No.	CENTRALAB PART No.	CLAROSTAT PART No.	CTS-IRC PART No.
R1a	Tone	50K	EVK03SS20758			
b	Volume (Left)	10K				
c	Volume/Switch (Right)	10K				
R2	Level	10K	EVS03AA00B14	TSV-10K or T-10K		X201R103B
						MTC14L1

PARTS LIST AND DESCRIPTION (CONTINUED)

(When ordering parts, state Model, Part Number, and Description.)

Replacement parts shown may be superseded by the availability of newly introduced replacements.
Have your local distributor check Sams COUNTER FACTS* for the most up-to-date replacement.

RESISTORS (Power and Special)

ITEM No.	RATING	REPLACEMENT DATA	
		WORKMAN PART No.	MFGR. PART No.
R66	13 (Cold)		ERTD38FK130M
R69	13 (Cold)		ERTD38FK130M

ITEM No.	RATING	REPLACEMENT DATA	
		WORKMAN PART No.	MFGR. PART No.
R71	.2 (WW)		ERM12VKR20
R72	.2 (WW)		ERM12VKR20

COILS (RF-IF)

ITEM No.	USE	REPLACEMENT DATA			
		PART No.	MEISSNER PART No.	MILLER PART No.	WORKMAN PART No.
L1	FM Antenna	(1)			
L2	10.7MC Trap (1.7uh)				
L3	FM RF	(1)			
L4	FM Oscillator	(1)			
L5	FM Input IF	(1)			
L6	FM Interstage IF	YEIF14S1015B			
L7	FM Interstage IF	YEIF14S1015B			
L8	FM Interstage IF	YEIF14S1015B			
L9	Ratio Detector	YEIF14S1016D (2)			
L10	RF Choke (8.9uh)		19-1009	4611	T960
L11	AM Antenna	(3)			
L12	AM RF	(3)			
L13	AM Oscillator Tuning	(3)			
L14	RF Choke (3.3uh)				
L15	Image Trap (3.3uh)	YELQ04N017			
L16	Oscillator	YELL10S049			
L17	AM Input IF	EIC10D206A			
L18	AM Output IF	EIA10S241E			
L19	RF Choke (3uh)				

(1) Part of M1.

(2) Includes Diodes.

(3) Part of M2.

FILTER CHOKE

ITEM No.	RATINGS			REPLACEMENT DATA				NOTES
	CURRENT (Measured)	DC RES.	INDUCTANCE (0 CURRENT 1000~)	MFGR. PART No.	STANCOR PART No.	THORDARSON PART No.	TRIAD PART No.	
L20	250ma	.3	5mh	YETQ020F012				

TRANSFORMER (Driver)

ITEM No.	TURNS RATIO			REPLACEMENT DATA				NOTES
	PRI.	SEC. 1	SEC. 2	MFGR. PART No.	STANCOR PART No.	THORDARSON PART No.	TRIAD Part No.	
T1	4	1	1	YETD026F019				

PARTS LIST AND DESCRIPTION (CONTINUED)

(When ordering parts, state Model, Part Number, and Description.)

Replacement parts shown may be superseded by the availability of newly introduced replacements.

Have your local distributor check Sams COUNTER FACTS® for the most up-to-date replacement.

SPEAKER

ITEM No.	TYPE	REPLACEMENT DATA		NOTES
		MFGR. PART No.	QUAM PART No.	
SP1	5" x 9" PM, 4 ohms	EAS18D55SC		

FUSE DEVICES

ITEM No.	DESCRIPTION	REPLACEMENT DATA							
		PART No.		BUSS PART No.		LITTELFUSE PART No.		WORKMAN PART No.	
		DEVICE	HOLDER	DEVICE	HOLDER	DEVICE	HOLDER	DEVICE	
F1	3 Amp	XBB1C30NR1	YEFK02008	AGC3	3823-1	312003	357001		

MISCELLANEOUS

ITEM No.	PART NAME	PART No.	NOTES
M1	FM Tuning Coil Assembly	YEAV05080 YEXA001 YEXA001 EXA4WK10 EXA4WK10 EXA4WK10 EXA5DL03C	Includes M1 & M2
M2	AM Tuning Coil Assembly		
M3	FM Tuner		
PC1	FM Mixer Network		
PC2	1st FM IF Network		
PC3	2nd FM IF Network		
PC4	3rd FM IF Network		
PC5	4th FM IF Network		
PC6	Depth Network		
S1	Switch, Selector		

CABINETS & CABINET PARTS (When ordering specify model, chassis & color)

ITEM	PART No.	ITEM	PART No.
Fuse Cover	YEFK02009	Dial Pointer	YEFH01049
Knob, Tuning or Volume	YEFE07012	Dial Glass	YEFJ08108
Knob, Tone or Dummy	YEFE08009		

WIRING DATA

General-use Unshielded Hook-up Wire	Use BELOEN No. 8530 (Solid) Available in 12 Colors
Shielded Hook-up Wire	8524 (Stranded) Available in 12 Colors
Rear Seat Speaker Extension Cable	Use BELDEN No. 8885
Bonding Strap	Use BELOEN No. 8782 (Stranded) Coded Parallel Leads
	Use BELOEN No. 8661 (3/8 In.) or 8670 (3/4 In.)

TOYOTA MODEL 86120-20110

INDEX

This index lists all radios appearing in
"Auto Radio Manuals" and "PHOTOFACT Auto Radio Series"

KEY	(EP) Early Productions	(LP) Late Productions	(REV) Revised
AIRCATTLE	ALLIED	AMERICAN MOTORS	A.R.C.
610.A67 4	19B4191 60	(CONT.)	2500 33
610.FE-153 52-53	19B4192 62	F9SMG (8991829)	ARVIN
Ford 4		Canadian (8992252)	50Y74-19 92
610.W-100 5		USA 69 Javelin 83	60Y53-19 Ch.1.45701 .. 67
	ALLIS CHALMERS	F9SMR (8991836,	1.51001 92
AIR CHIEF (See Firestone)	0BTAC 70 80	8992417) 69-70	ASTRO LINE (See Boman
	1BTAC 112	Ambassador, Rebel 84	Astrosonix)
AIRLINE (Also See	7BT 249523 44	P7MA 67 Ambassador,	ATR KARADIO
Riverside)	7BTX 50	Marlin,Rebel 47	BKS410 61-62 Buick
		P8MA 68 Ambassador,	Special 27
FJB-6590A 55 Ford 6		Rebel 62	CT412 61-62 Chev. 27
35BR-6796A 5	ALLSTATE	P9MA (8992206)	CR414 60-62 Corvair .. 27
61-6787 52 Ford 5	5018 22	69 Ambassador, Rebel.. 82	COT416 60-62 Comet ... 27
61-6788 52-53 Ford ... 5	5028 Ch.528.50280/	RV4R 64 Rambler 24	DED418 62 Dart 27
61-6789 51-52 Chev. ... 5	50281 7	1JA1001, 2JA1001	FAL420 60-62 Falcon .. 27
61-6792 53 Dodge 4	5033 Ch.528.50330/	(3631192) 70 Javelin.. 82	FD422 60-62 Ford 27
61-6793 53 Chev. 5	50331 7	1JA2001 (3631193) USA,	LR424 62 Lancer 27
61-6794 53 Plym. 5	5050 30	2JA2001 (3631193)	MY426 62 Merc. 27
61-6795 53 Merc. 5	5066 26	Canadian 70 Javelin .. 83	OE428 61-62 F-85 27
61-12601 Tractor 5	5098 Ch.833.50980 ... 9	1JA4009 (3601578)	PH430 62 Plym. 27
	5099 Ch.833.50990 ... 9	70 Javelin 87	PCT432 61-62 Tempest.. 27
	6225 Ch.528.55040/	1RA1016, 2RS1016	TR1279-6V 11
AIWA	55041 11	(3614434) 70	TR1279-12V 11
TP-718 48	6231 Ch.528.62310 ... 9	Ambassador, Rebel 86	TT-727 Tractor Radio.. 29
TP-1023 91	6232 Ch.528.62320 ... 9	1RA2007 (3614435)	VT434 62 Valiant 27
TP-1028/E/E1 107	6240 Ch.528.62400 ... 5	69-70 Ambassador,Rebel 84	401 27
	6256 Ch.528.55040/	1RA5002 (3591052)	606 19
ALL AMERICAN	55041 11	70 Ambassador, Rebel . 87	612 19
CEP-764T 64	6263 Ch.528.6263 ... 5	1RB1002, 2RB1002	707 22
Chevelle 31	6264 Ch.528.6264 ... 5	(3616442) 70 Hornet .. 86	1279-6V 11
CHP-164T 64 Chev. 31	6263-2 Ch.528.6263-2.. 5	6SMR 66 Ambassador,	1279-12V 11
CHP-165T 65 Chev. 33	6264-1 Ch.528.6264-1.. 5	Classic,Marlin 35	AUDIO/STEREO
CHP-564T 64	6266 Ch.528.6266 ... 5	7SMR 67 Ambassador,	A-12 53
Chevy II 31	6268 Ch.528.6268/81 ... 7	Marlin,Rebel 50	A-30 52
CTP-264T 64 Comet 31	6269 Ch.528.6269/91 ... 7	8SMG (8992251)	A-40 57
CYP-465T 64 Chrysler.. 33	6284 Ch.528.6284 4	68 Javelin 68	A-45 64
DAP-864T 64 Dart 31	6286-4 Ch.528.6286-4.. 4	9SMG (8991796 or	A-50 60
DAP-865T 64 Dart 33	6287-4 Ch.528.6287-4.. 4	8991989) 69 Javelin .. 82	A-90 50
DOP-864T 64 Dodge 31	6295-6 Ch.528.6295-6.. 4	85MR 68 Ambassador,	A-100 50
DOP-865T 65 Dodge 33	6330 Ch.528.63300 ... 5	Marlin,Rebel 50	AUDIOVOX
FAP-264T 64 Falcon 31	750.62380/81/90/91,	9SMR USA (8991835)	C-80 90
FLP-264T 64 Fairlane.. 31	750.62890 25	Canada (8992416) 70	C-410 92
FOP-264T 64 Ford 31	833.5049 30	Ambassador,Rebel 86	C-420 93
FOP-265T 65 Ford 33	833.50180B 31	22BA R22BA 62 Rambler	C-440 58-68 Volks-
MEP-264T 63-64 Merc .. 31	833.50181 27	American 18	wagen 96
MEP-265T 65 Merc. 33	833.50202 27	22BAM R22BAM 62	C-510 92
MLP-464T 64 Plym. 31	833.50490 30	Rambler American 18	C-520 94
PLP-465T 65 Plym. 33	833.50930 28	22BAX R22BAX 62	C-560 94
PLPF-465T 65 Fury 33	833.50931 64 VW 28	Rambler American 18	C-565 94
RAAP-1065T 65	833.62741 28	8990377 6MR 56	C-575 93
Rambler American 33	833.62743 32	Rambler 6	C-576 93
RAP-364T 64 Rambler .. 26	833.62800 30	8990378 6MA 56 Hudson	C-930 91
RAP-365T 65 Rambler .. 26	833.63070 28	& Nash 6	C-935 95
SM-130RPE 33	833.500510 65 Chev.. 32	8990378 76MA 57	C-940 99
UP-220RPT 26	833.501220 30	Hudson & Nash 6	C-950 99
VAP-464T 64 Valiant .. 31	833.501230 65 Dart .. 30	8990455 7MR 57	AUSTIN HEALEY
VAP-465T 65 Valiant .. 33	833.501920 65 Comet .. 30	Rambler 6	HAC700 4TMB 30
VWP-19T 58-64 VW 26	833.503050 65 Fury .. 30	8990494 84MA 58	AUTOMATIC
VWP-19T 65 Prod VW ... 34	833.503050 65	Hudson,Nash &	AC-4558 64 Comet 27
	Belvedere 30	Rambler 8	ACP-3044 63 Comet 23
ALLCAR	833.623690 30	8990543 83MR 58	ACP-4559 64 Comet 27
R-1 65 Plym. 34	833.624211 64 VW 28	Rambler 8	ACS-6000 73
R-2 65 Fury 34	833.624630 30	8990576 94MA 59	ATC-60 59-60 Chev. 15
R-3 65 Valiant 34	833.625510 65 Chev. .. 30	Rambler 9	BAP-9 59 Buick 13
R-4 65 Coronet 34	833.627420 28	8990582 93MA 59	BAP-20 60 Buick 14
R-5 65 Dart 34	833.628000 30	Rambler 10	BAP-4530 64 Buick 28
R-6 65 Polara 34	834.50480 32	8990706 04MA 60	BAR-4530 64 Buick 28
R-7A 65 Newport 34	835.62460 29	Rambler 11	BAR-8209 68 Barracuda,
R-7B 65 Chrysler 300.. 34	856.62450 27	8990811 03AR 60	Plymouth 60
R-7C 65 New Yorker ... 34	856.62470 52	Rambler 12	BP-340 60 Buick 14
R-9 65 Chev. 34		8990831 13MAM 60	BP-668 57-58 Buick 12
R-10 65 Chevelle 34	AMERICAN MOTORS	Rambler 14	BP-679 59 Buick 13
R-11 65 Chevy II 34	(See Hudson, Nash &	8990832 13MA 60	BP-3081 63 Buick 23
R-16 65 Corvair 34	Rambler)	Rambler 14	BP-4030 64 Buick 28
R-18 65 Pontiac 34	AF6TMR page 120 66	8990833 14MR 61	
R-19 65 Oids 34	Ambassador,Classic,	Rambler 15	
R-20 65 Tempest 34	Marlin 28	8990981 2TMR 62	
R-21 65 Olds, F-85 ... 34	AF7SMR 67 Ambassador,	Rambler 29	
R-22 65 Buick 34	Marlin,Rebel 44	ANGLIA	
R-23 65 Galaxie 34	A8MG (8992290)	Micro 40 111	
R-24 65 Fairlane 34	68 Javelin 65	Micro 42 107	
R-25 65 Mustang 34	A9MG (8992290)	Micro 44 110	
R-26 65 Falcon 34	69 Javelin 82		
R-28 65 Comet 34	F8SMG (8992252)		
R-29 65 Merc. 34	68 Javelin 68		
R-32 65 Buick Spl. ... 34	F8SMR 68 Ambassador,		
	Rebel 63		