

PHOTOFACT[®] with

CIRCUITRACE[®]

For Supplier Address See PHOTOFACT Index



MODELS CX-175FUT (86021-22030)
CX-175.T (86260-22020)
CX-176FUT (86021-22031)
CX-176.T (86260-22021)
(Corona Mark II)

ADJUSTMENTS

ADJUST	REMARKS
Head Azimuth	Play a test cartridge and adjust B1 for maximum on an AC VTVM across output.
Head Height	Play a test cartridge, follow instructions with cartridge, and adjust B2 for proper response.

TROUBLE CHART

SYMPTOM	REMARKS
Capstan does not rotate.	Belt (M250) dirty, worn, or broken. Assembly (M223) binding. Motor defective or not supplied with power.
Track-shift mechanism inoperative	Switch (SW5) dirty. Cam (M234) binding or worn. Pawls (M238) and (M23-) worn. Spring (241) weak or broken. Assembly (M227) binding. Solenoid (M3) defective or not supplied with power. Cartridge defective.
Wow or flutter	Belt (M250) dirty or worn. Capstan dirty or binding. Cartridge defective. Motor defective.
Sound weak or distorted	Head dirty, misaligned, or defective. Cartridge defective. Amplifiers defective.
Tape is pulled from cartridge.	Cartridge defective. Capstan dirty or scored.

TOYOTA MODELS CX-175/-176

HOWARD W. SAMS & CO., INC. Indianapolis, Indiana 46206

© 1976 Howard W. Sams & Co., Inc. Printed in U. S. of America 5AR813

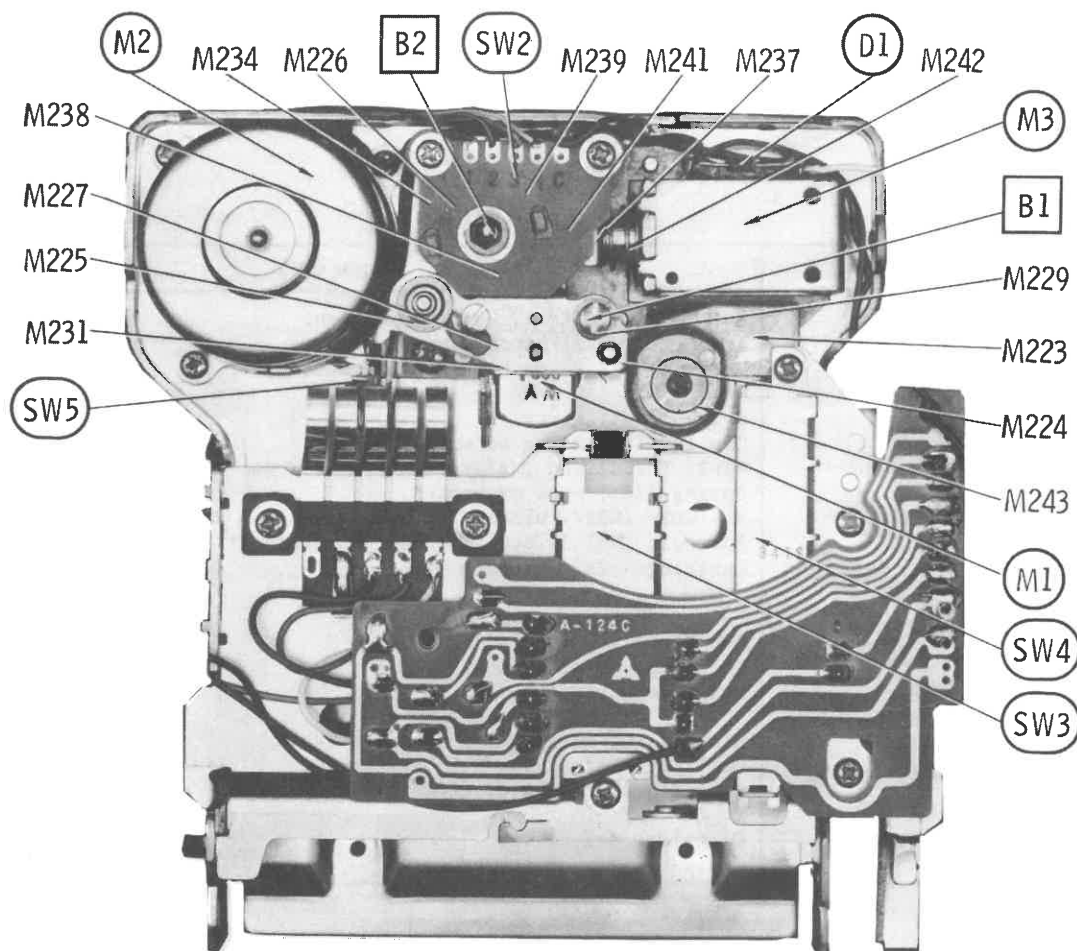
MECHANICAL PARTS LIST

REF. NO.	PART NO.	DESCRIPTION	REF. NO.	PART NO.	DESCRIPTION
M201	YAFX013019	Flywheel	M231	YAFX029260	Head Clamp
M212	YAFX046109	Detent Arm	M234	YAFX034015	Track Changing Cam
M215	YASF011022	Detent Roller	M237	YAFX037006	Pawl Guide Plate
M218	YAFX011279	Detent Spring	M238	YAFX015008	Push Pawl
M223	YAFX012020	Flywheel Housing Assembly	M239	YAFX015009	Pull Pawl
M224	YAFX011273	Head Lifting Spring	M241	YAFX011276	Pawl Spring
M225	YAFX011274	Head Lifting Spring	M242	YAFX011277	Solenoid Spring
M226	YAFX011275	Cam Tension Spring	M243	YAFX025010	Tape Scraper
M227	YASF036023	Head Mounting Plate	M250*	YAFR01023*	Flywheel Drive Belt*
M229	YAFX011193	Azimuth Spring			

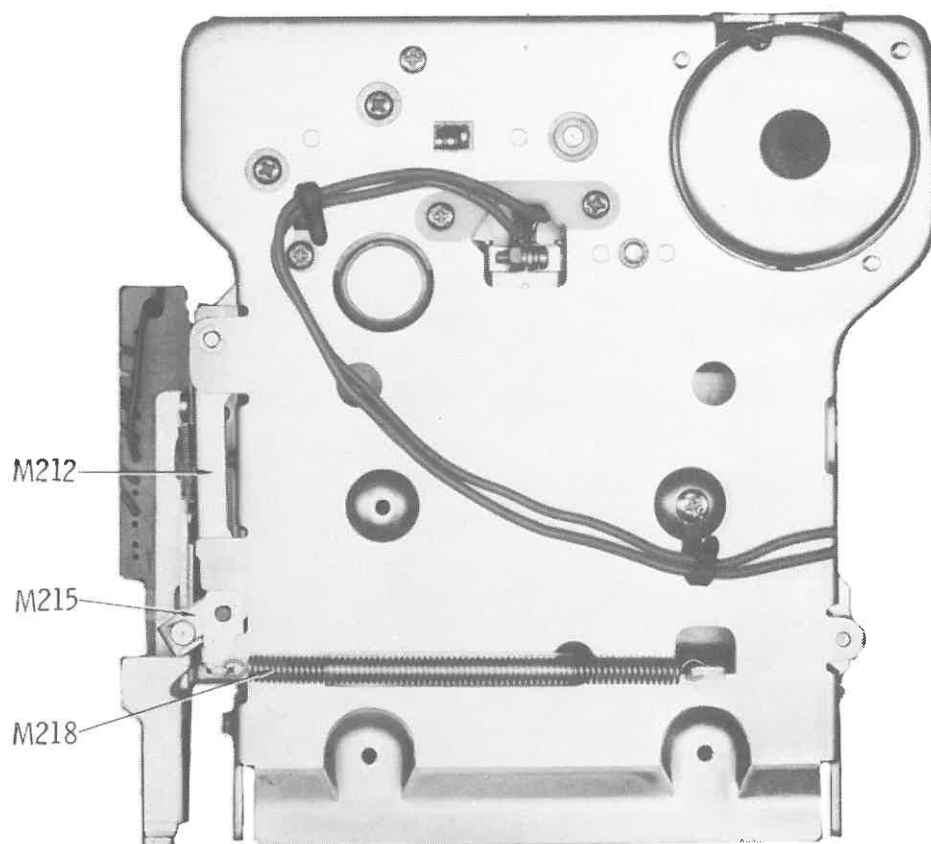
* Flywheel Drive Belt - E-V/GAME Replacement Number 1424-21
WALSCO Replacement Number 1424-21

CLEANING LUBRICATING HEAD DEMAGNETIZING

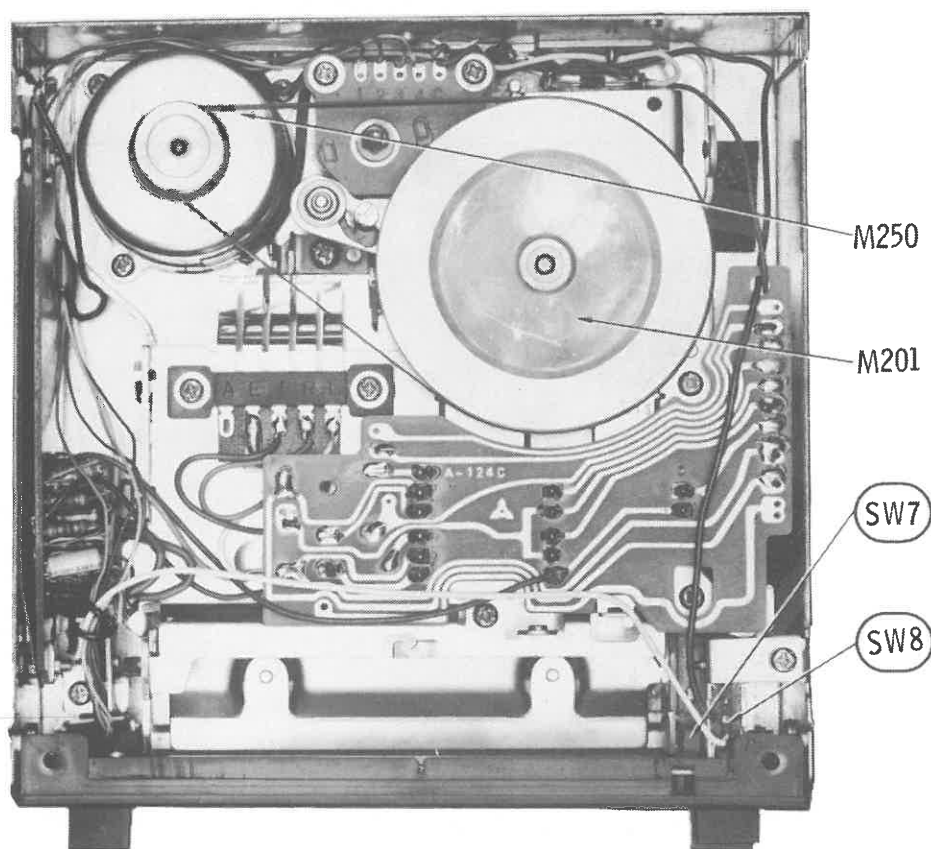
Refer to "General Servicing Information" on page 4.



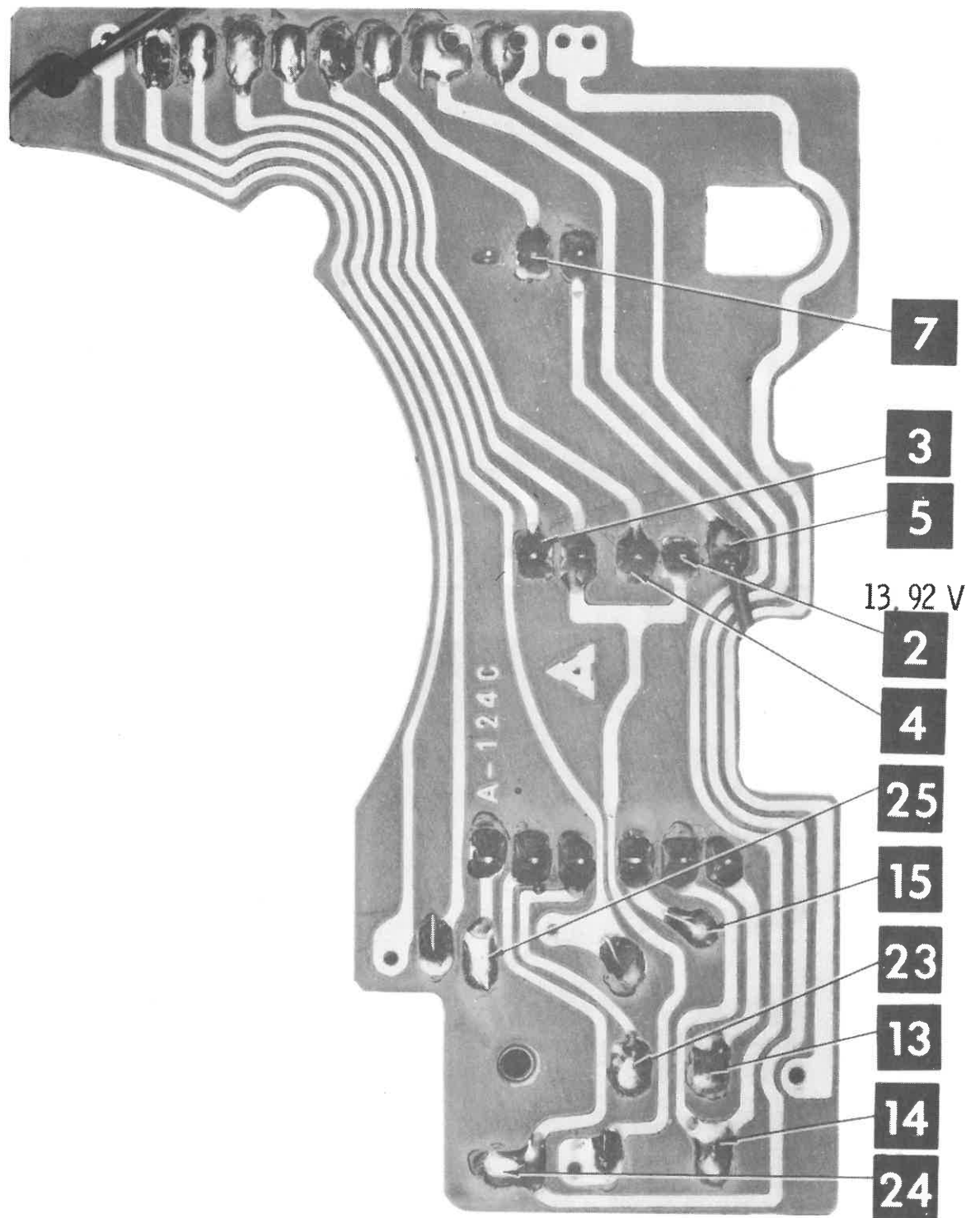
TAPE DECK — TOP



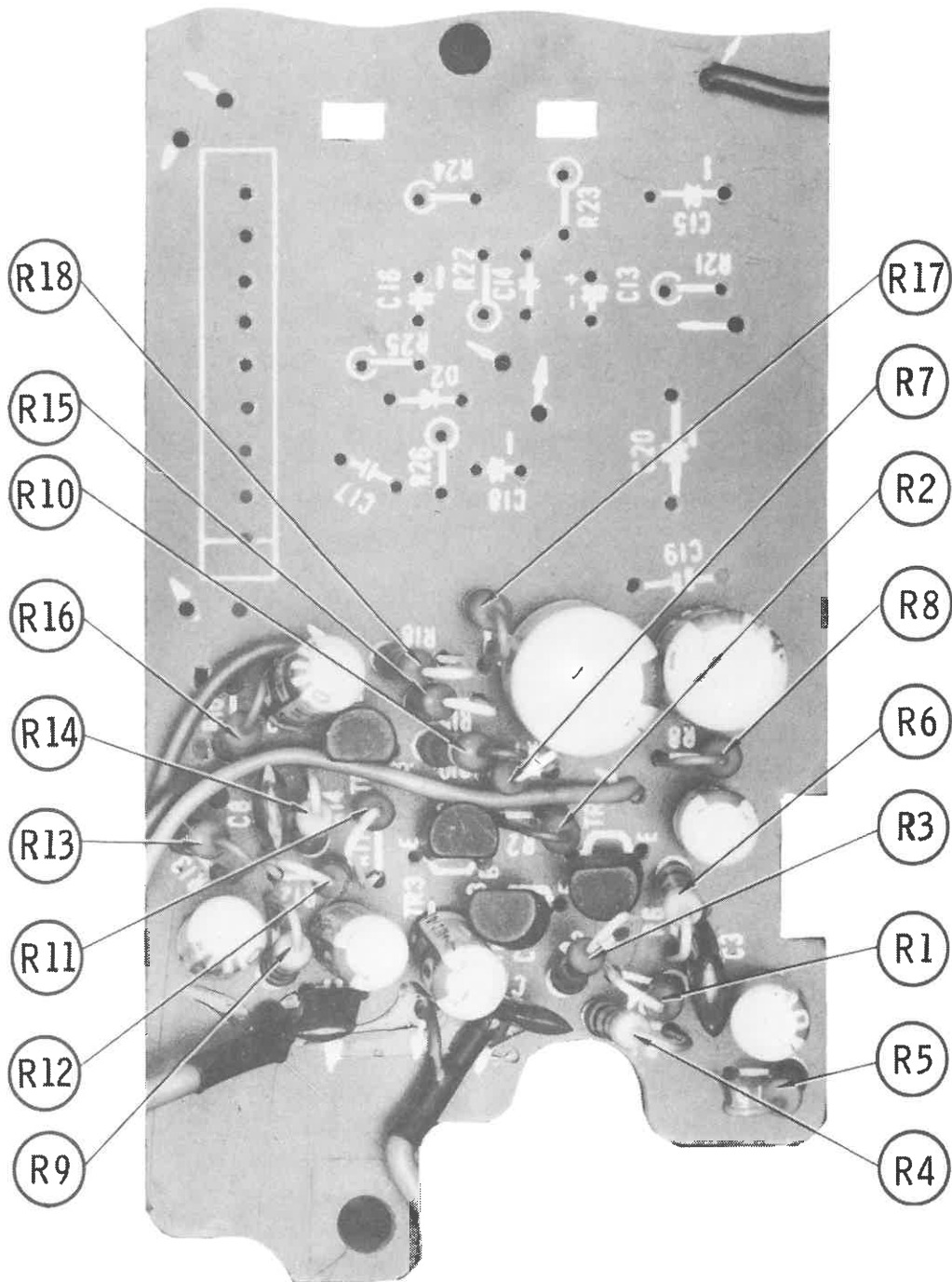
TAPE DECK — BOTTOM



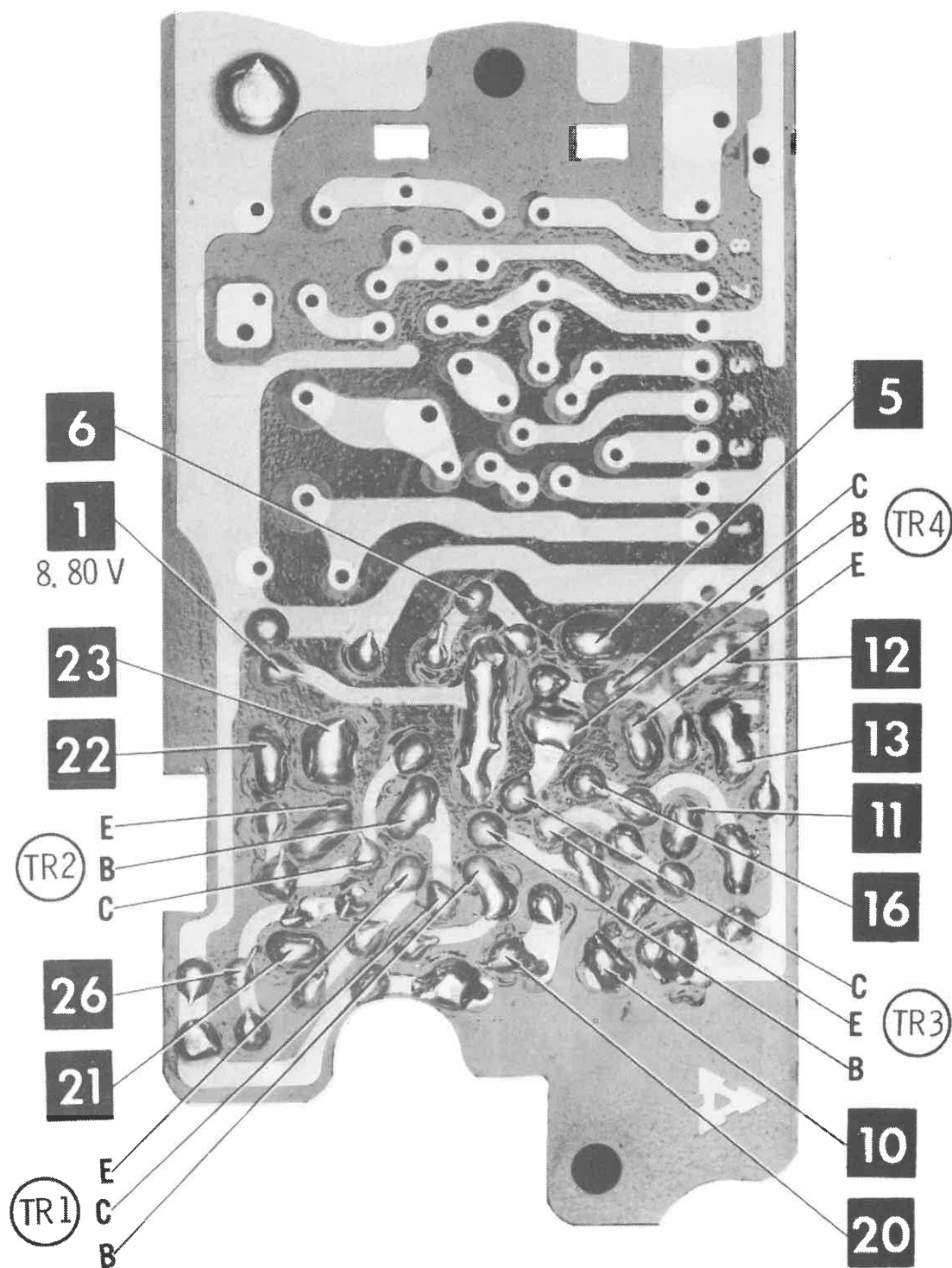
CHASSIS — TOP



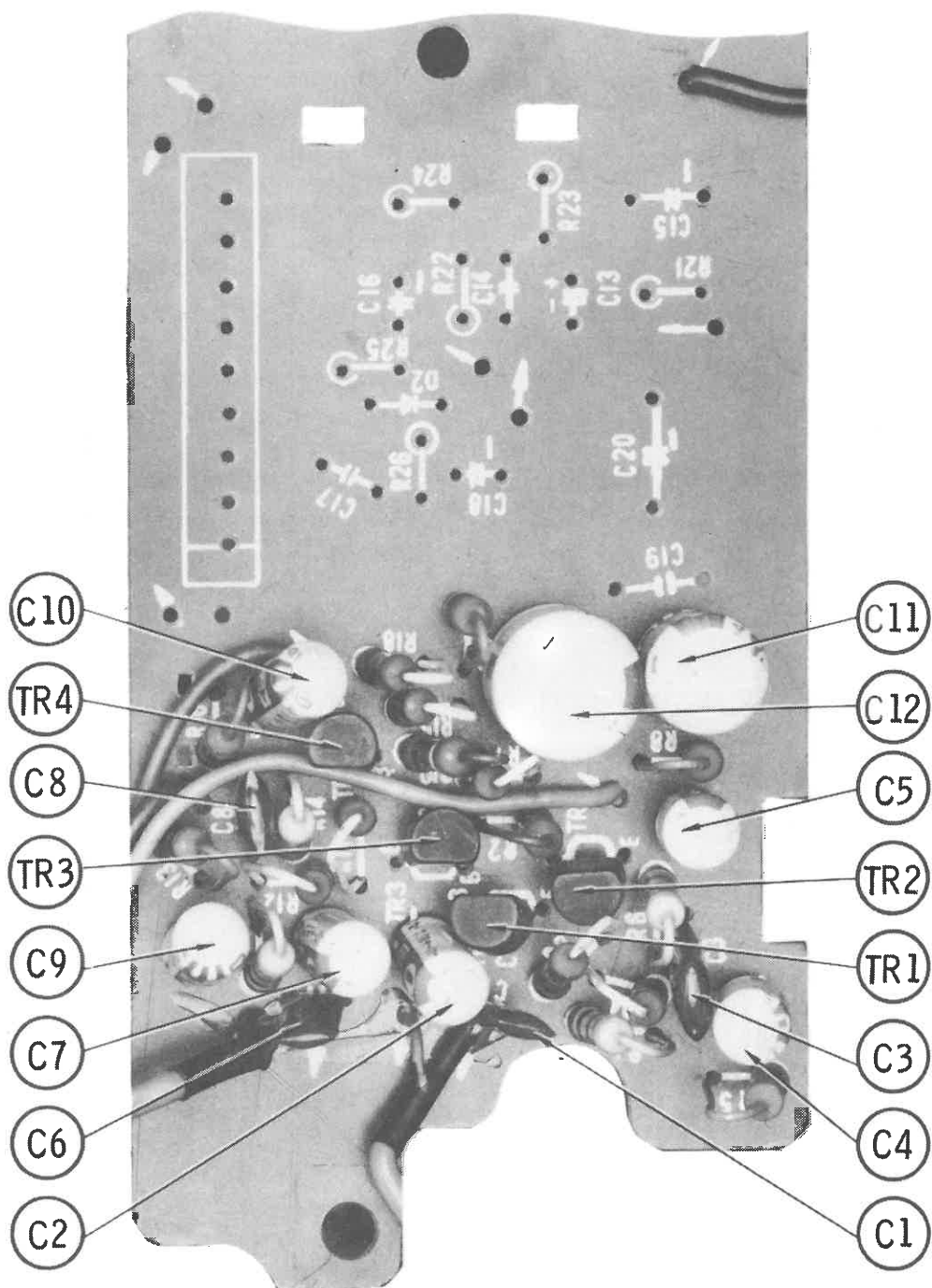
SWITCH BOARD



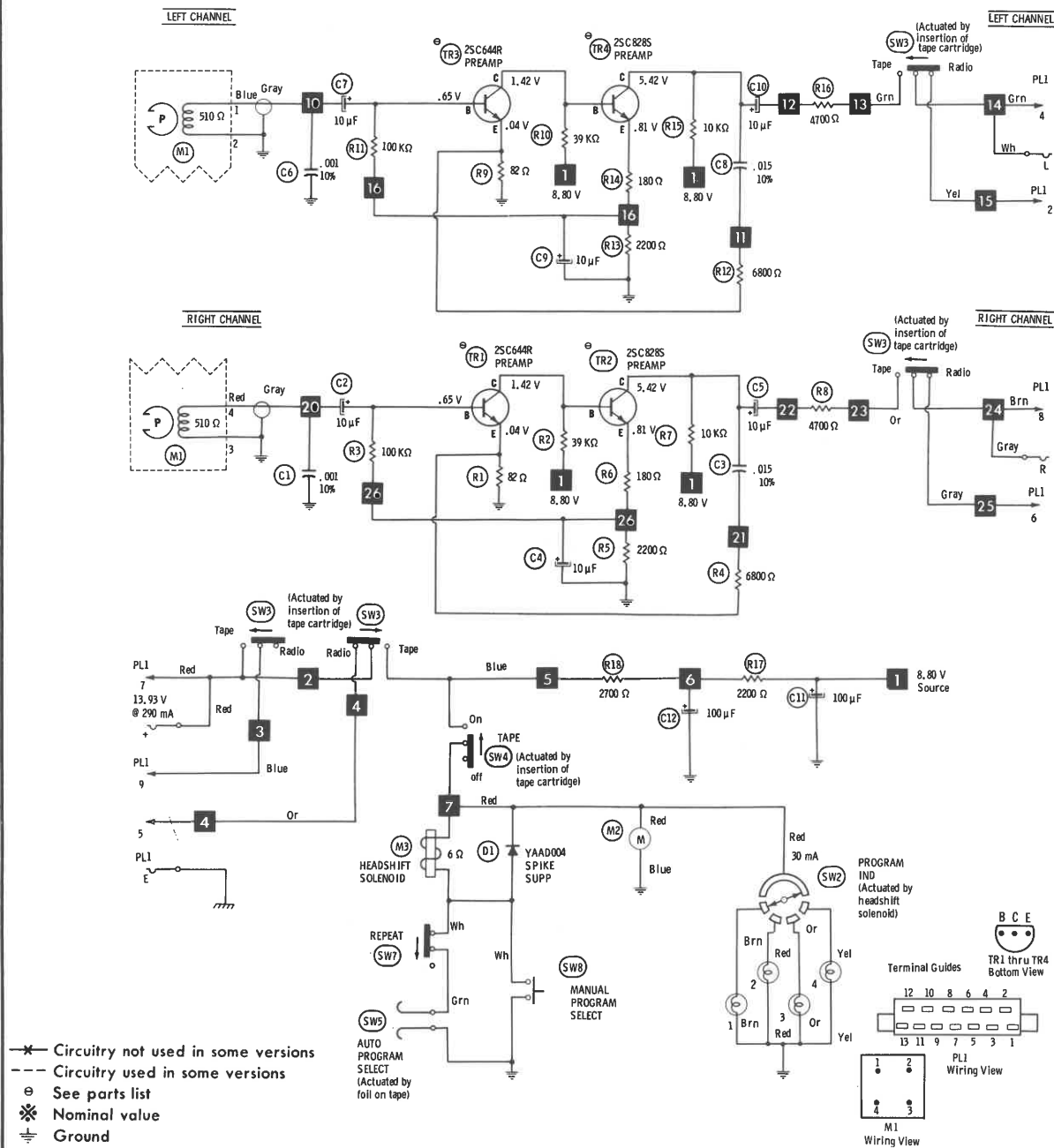
AUDIO BOARD



AUDIO BOARD



NOTE: DEMAGNETIZE HEADS AFTER SERVICING



PARTS LIST AND DESCRIPTION

(When ordering parts, state Model, Part Number, and Description.)

Replacement parts shown may be superseded by the availability of newly introduced replacements.

Have your local distributor check Sams COUNTER FACTS® for the most up-to-date replacement.

SEMICONDUCTORS (Select replacement transistor for best results)

ITEM No.	TYPE No.	MFR. PART No.	REPLACEMENT DATA							
			GENERAL ELECTRIC PART No.	INTERNATIONAL RECTIFIER PART No.	MALLORY PART No.	MOTOROLA PART No.	RAYTHEON PART No.	RCA PART No.	SPRAGUE PART No.	SYLVANIA PART No.
D1		YAAD004	GE-504A	8D4	PTC201	HEPR0052	RE 49	SK3030	RT-213	ECG116
TR1	2SC644R	2SC644-RST	GE-212	TR-21	PTC139	HEPS0015	RE 64	SK3124	RT-159A	ECG199
TR2	2SC828S	2SC828-RST	GE-20	TR-24	PTC139	HEPS0015	RE 13	SK3124	RT-107A	ECG199
TR3	2SC644R	2SC644-RST	GE-212	TR-21	PTC139	HEPS0015	RE 64	SK3124	RT-159A	ECG199
TR4	2SC828S	2SC828-RST	GE-20	TR-24	PTC139	HEPS0015	RE 13	SK3124	RT-107A	ECG199

ELECTROLYTIC CAPACITORS

ITEM No.	RATING	REPLACEMENT DATA					
		MFR. PART No.	ARCO PART No.	CENTRALAB PART No.	CORNELL-DUBILIER PART No.	MALLORY PART No.	SPRAGUE PART No.
C2	10 16V	ECEA16V10L	RME-B-G-010	EP15-10	PC10-25	VTT10A25	EV-1222
C4	10 16V	ECEA16V10L	RME-B-G-010	EP15-10	PC10-25	VTT10A25	EV-1222
C5	10 16V	ECEA16V10L	RME-B-G-010	EP15-10	PC10-25	VTT10A25	EV-1222
C7	10 16V	ECEA16V10L	RME-B-G-010	EP15-10	PC10-25	VTT10A25	EV-1222
C9	10 16V	ECEA16V10L	RME-B-G-010	EP15-10	PC10-25	VTT10A25	EV-1222
C10	10 16V	ECEA16V10L	RME-B-G-010	EP15-10	PC10-25	VTT10A25	EV-1222
C11	100 10V	ECEA10V100L	RME-E-E-100	EP15-100	PC100-10	VTT100E10	EV-1130
C12	100 16V	ECEA16V100L	RME-E-E-100	EP15-100	PC100-16	VTT100F16	EV-1230

CAPACITORS

ITEM No.	RATING	MFR. PART No.	REPLACEMENT DATA				
			ARCO PART No.	CENTRALAB PART No.	CORNELL-DUBILIER PART No.	MALLORY PART No.	SPRAGUE PART No.
C1	.001 10% 50V		1MDF-1-102	CPJ-102	DPMS6D1	EWF1A210	1PB-D10
C3	.015 10% 50V		1MDF-1-153	CPJ-153	DPMS4S15	EWF1A115	1PB-S15
C6	.001 10% 50V		1MDF-1-102	CPJ-102	DPMS6D1	EWF1A210	1PB-D10
C8	.015 10% 50V		1MDF-1-153	CPJ-153	DPMS4S15	EWF1A115	1PB-S15

TOYOTA MODELS CX-175/-176

PARTS LIST AND DESCRIPTION (CONTINUED)

(When ordering parts, state Model, Part Number, and Description.)

Replacement parts shown may be superseded by the availability of newly introduced replacements.

Have your local distributor check Sams COUNTER FACTS® for the most up-to-date replacement.

TAPE HEADS

ITEM No.	MEASURED			MFR. PART No.	NORTONICS PART No.	DESCRIPTION
	INDUCTANCE	BIAS/ERASE VOLTS (RMS)	BIAS FREQ.			
M1	590mH			YAAH1082EA	5800 (1)	8-Track Stereo Play (1) Use original mounting

MISCELLANEOUS

ITEM No.	PART NAME	PART No.	NOTES
M2	Motor	YASAK01024	Tape Transport (2000 rpm @ 13.93V DC)
M3	Solenoid	YAAK01020	Head Shift
SW2	Switch	YAAS10003	Program Indicator
SW3	Switch	YAAS07015	Radio/Tape
SW4	Switch	YAAS07014	Power (On/Off)
SW5	Switch	YAFX035020	Auto Program Select
SW7	Switch	YAAS09047	Repeat
SW8	Switch	YAAS13014	Manual Program Select

CABINETS & CABINET PARTS (When ordering specify model, chassis & color)

ITEM	PART No.	ITEM	PART No.
Cabinet, Top Assembly (Model CX-176.T)	YAF003149	Shaft, Cartridge Door	YAFW01227
Cabinet, Top Assembly (Model CX-175.T)	YAF003056	Spring, Cartridge Door	YAFX005091
Escutcheon (Model CX-176.T)	YAF002121	Push-button Assembly, Program Select	YAFE13058
Escutcheon (Model CX-175.T)	YAF002100	Push-button, Eject	YAFE14022
Door, Cartridge (Model CX-176.T)	YAFX001076	Push-button, Repeat	YAFE13060
Door, Cartridge (Model CX-175.T)	YAFX001079		

WIRING DATA

General-use Unshielded Hook-up Wire	Use BELDEN No. 8530 (Solid) Available in 12 Colors 8524 (Stranded) Available in 12 Colors
Shielded Hook-up Wire	Use BELDEN No. 8885
Rear Seat Speaker Extension Cable	Use BELDEN No. 8782 (Stranded) Coded Parallel Leads
Bonding Strap	Use BELDEN No. 8661 (3/8 In.) or 8670 (3/4 In.)
Ignition Noise Suppression	Use BELDEN No. 7300-Series Spark-Plug Sets