

CHASSIS — BOTTOM VIEW



The listing of any available replacement part herein does not constitute in any case a recommendation, warranty or guaranty by Howard W. Sams & Co., Inc., as to the quality and suitability of such replacement part. The numbers of these parts have been compiled from information furnished to Howard W. Sams & Co., Inc., by the manufacturers of the particular type of replacement part listed. MT688

PHOTOFACT® Folder



TONECREST
MODELS T-730A, T-732A

SET 697 FOLDER 12

TONECREST
MODELS T-730A, T-732A

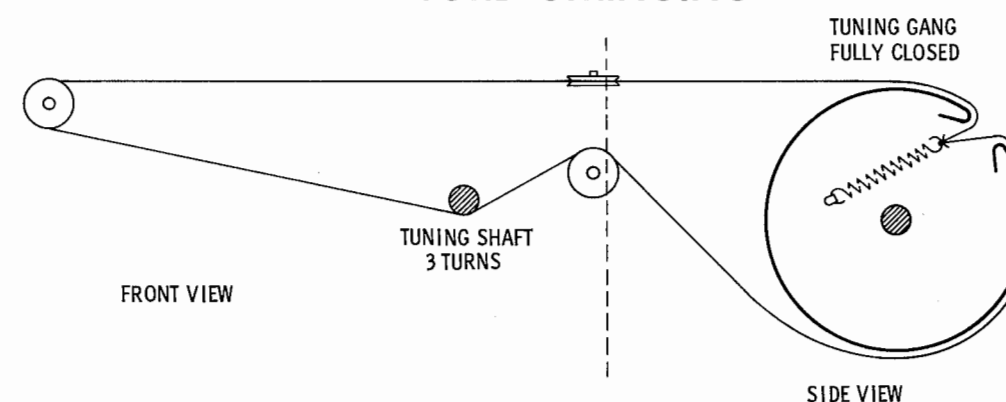


TONECREST
MODELS T-730A, T-732A

TRADE NAME	Toncrest Models T-730A, T-732A	
SUPPLIER	May Co., 1440 Broadway New York, N. Y.	
TYPE SET	AC Operated AM-FM Receiver with 4 Speed Automatic Record Changer	
POWER SUPPLY	105 -120 Volts AC, 60 Cycles	RATING 45 Watts, .54 Amp. @ 117 Volts AC (Less Motor)
TUNING RANGE	BROADCAST 540-1625KC	FREQ MOD 87-108MC

FOR SERVICE INFORMATION ON RECORD CHANGER—SEE SIMILAR PHOTOFACT SET 646 FOLDER 10

DIAL CORD STRINGING

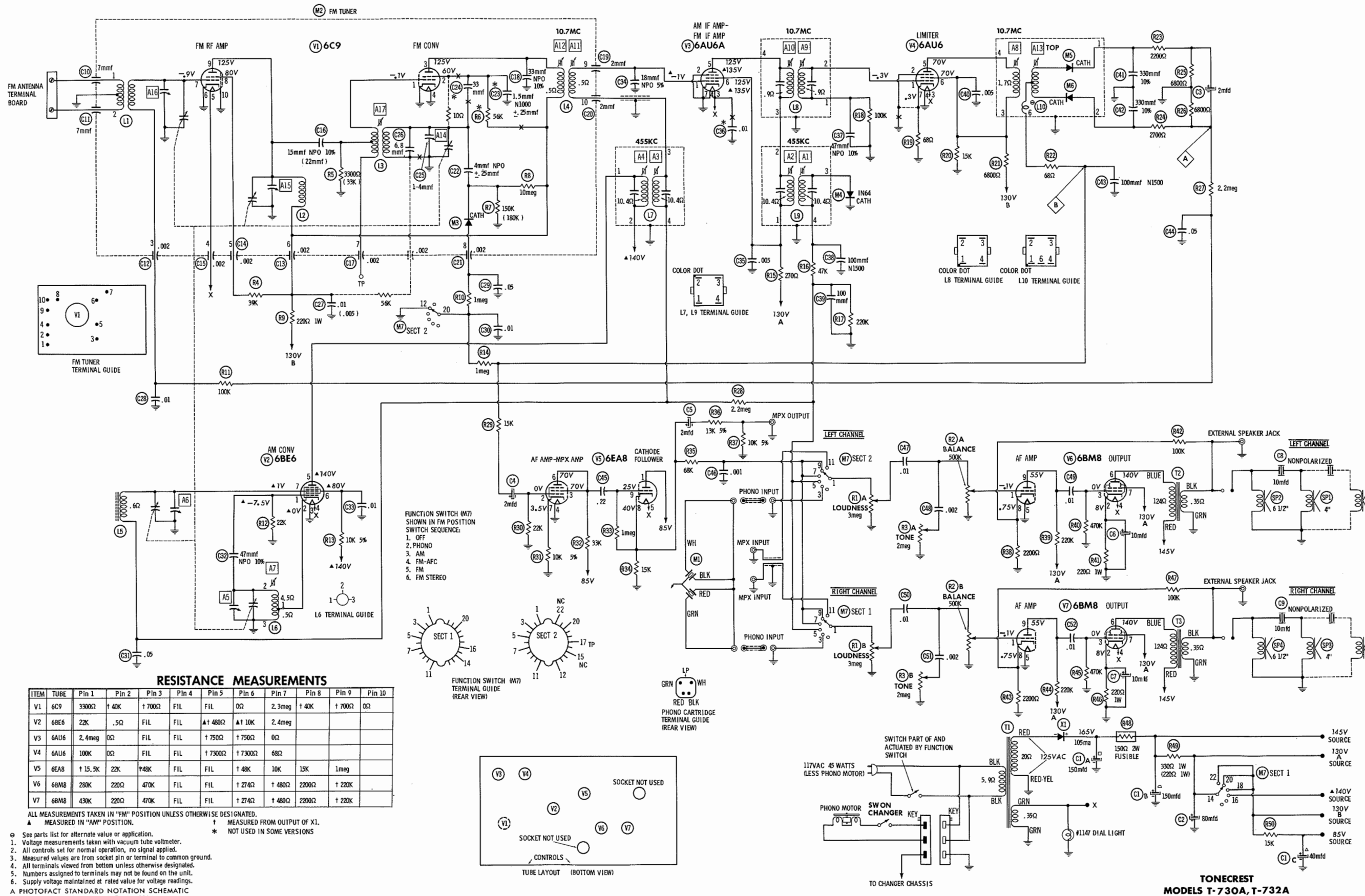


HOWARD W. SAMS & CO., INC. Indianapolis 6, Indiana

Reproduction or use, without express permission, of editorial or pictorial content, in any manner, is prohibited. No patent liability is assumed with respect to the use of the information contained herein. © 1964 Howard W. Sams & Co., Inc., Indianapolis 6, Indiana. Printed in U. S. of America

DATE 6-64 SET 697 FOLDER 12

SET 697 FOLDER 12



RESISTANCE MEASUREMENTS

ITEM	TUBE	Pin 1	Pin 2	Pin 3	Pin 4	Pin 5	Pin 6	Pin 7	Pin 8	Pin 9	Pin 10
V1	6C9	3300Ω	140K	1700Ω	FIL	FIL	0Ω	2.3meg	140K	1700Ω	0Ω
V2	6BE6	22K	.5Ω	FIL	FIL	1480Ω	110K	2.4meg			
V3	6AU6	2.4meg	0Ω	FIL	FIL	1750Ω	1750Ω	0Ω			
V4	6AU6	100K	0Ω	FIL	FIL	17300Ω	17300Ω	68Ω			
V5	6EA8	15.5K	22K	148K	FIL	FIL	148K	10K	15K	1meg	
V6	6BM8	280K	220Ω	470K	FIL	FIL	1274Ω	1480Ω	2200Ω	1220K	
V7	6BM8	430K	220Ω	470K	FIL	FIL	1274Ω	1480Ω	2200Ω	1220K	

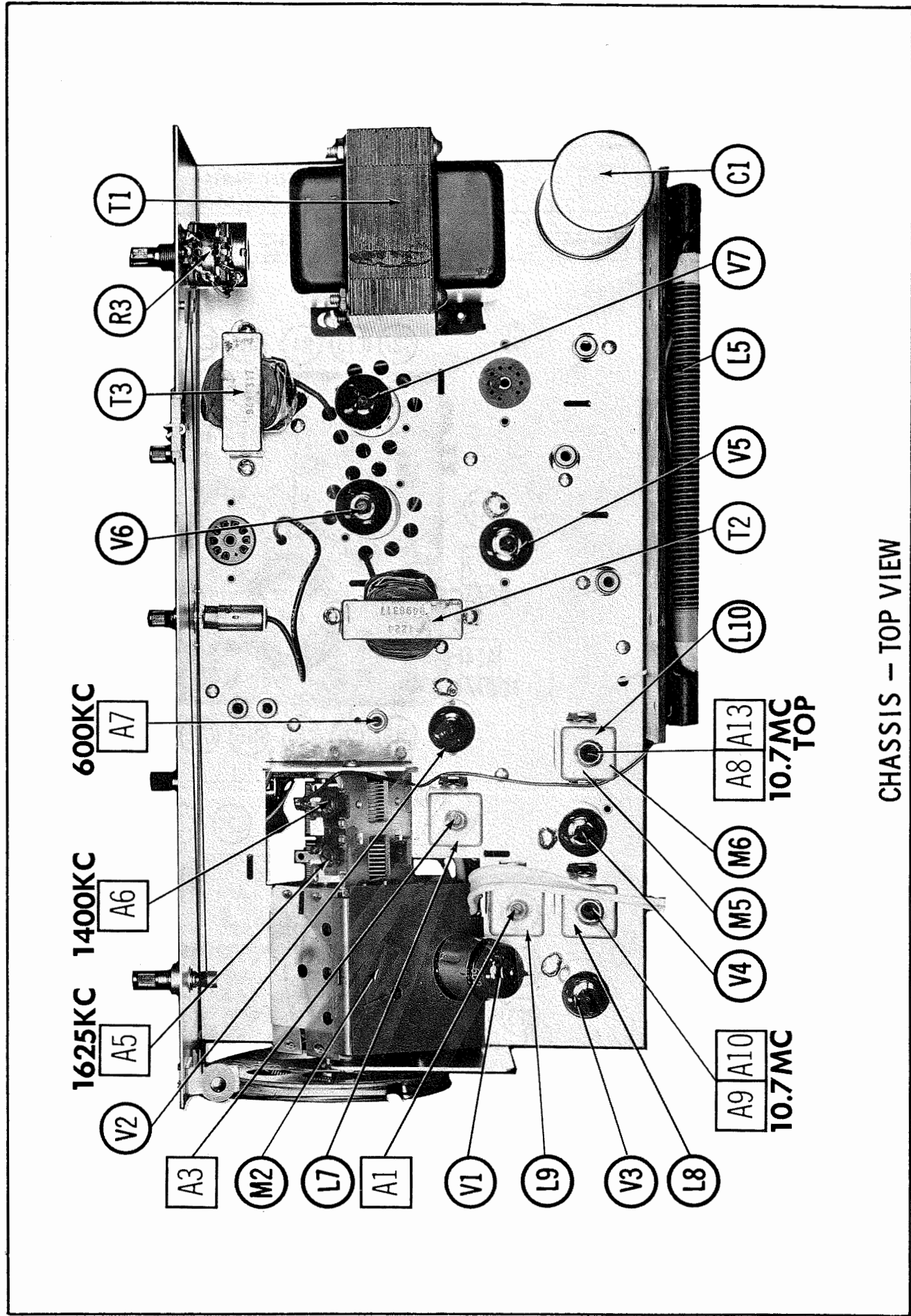
ALL MEASUREMENTS TAKEN IN "FM" POSITION UNLESS OTHERWISE DESIGNATED.
 † MEASURED IN "AM" POSITION.
 ‡ MEASURED FROM OUTPUT OF X1.

- See parts list for alternate value or application.
- Voltage measurements taken with vacuum tube voltmeter.
- All controls set for normal operation, no signal applied.
- Measured values are from socket pin or terminal to common ground.
- All terminals viewed from bottom unless otherwise designated.
- Numbers assigned to terminals may not be found on the unit.
- Supply voltage maintained at rated value for voltage readings.

A PHOTOFACT STANDARD NOTATION SCHEMATIC
 ©Howard W. Sams & Co., Inc. 1964

TONECREST
 MODELS T-730A, T-732A

FOLDER 12



ALIGNMENT INSTRUCTIONS

Maintain line voltage at 117 volts. Use only enough generator output to obtain a suitable indication. Allow a 15 minute warmup for receiver and equipment.
CAUTION: Use isolation transformer, if available. If not, observe polarity when connecting test equipment.
 Suggested Alignment Tools:
 A1 thru A6, A13, A14 GENERAL CEMENT: 8868, 9087, 9089 WALSCO: 2528, 2541, 2587
 A7 thru A12, A15 GENERAL CEMENT: 8606, 8606L, 8869 WALSCO: 2543, 2544, 2588

AM ALIGNMENT - SELECTOR IN AM POSITION

Fashion loop of several turns of wire and connect generator across loop. Set volume control at maximum.				
GENERATOR FREQUENCY	DIAL SETTING	INDICATOR	ADJUST	REMARKS
1. 455KC (400v Mod.)	Tuning gang fully open.	Output Meter across Voice coil.	A1, A2, A3, A4,	Adjust for maximum. Repeat until no further improvement can be made.
2. 1625KC	"	"	A5,	Adjust for maximum.
3. 1400KC	Tune to signal.	"	A6,	"
4. 600KC	"	"	A7	Rock tuning gang and adjust for maximum. Repeat steps 2 thru 4 until no further improvement can be made.

FM ALIGNMENT USING AM SIGNAL GENERATOR - SELECTOR IN FM POSITION

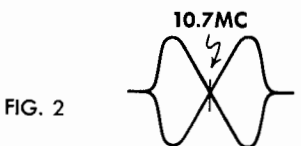
High side to ungrounded shield over FM converter tube, low side to ground.				
GENERATOR FREQUENCY	DIAL SETTING	INDICATOR	ADJUST	REMARKS
5. 10.7MC (Unmod.)	Point of non-interference.	DC probe of VTVM to point Δ ; common to ground.	A8, A9, A10, A11, A12,	Adjust for maximum.
6. "	"	DC probe to point Δ ; common to	A13	Adjust for zero reading. A positive or negative reading will be obtained on either side of the correct setting.

FM IF ALIGNMENT USING FM SIGNAL GENERATOR - SELECTOR IN FM POSITION

High side to ungrounded shield over FM converter, low side to ground. Use only enough marker signal to obtain indication. Use 60v frequency modulated signal with 450KC sweep. Use 120v sawtooth voltage in scope for horizontal deflection.				
GENERATOR FREQUENCY	DIAL SETTING	INDICATOR	ADJUST	REMARKS
5. 10.7MC (450KC Swp.)	Point of non-interference	Vert. amp. of Scope to point Δ ; low side to ground.	A8, A9, A10, A11, A12,	Disconnect stabilizing capacitor C3. Adjust for maximum gain and symmetry of response similar to Fig. 1 with marker as shown. Reconnect C3.
6. "	"	Vert. amp. to point Δ ; low side to	A13	Adjust A13 (Secondary) to place marker at center of crossover lines similar to Fig. 2. Adjust A8 (Primary) for maximum amplitude and straightness of crossover lines.

FM RF ALIGNMENT

Connect generator across antenna terminals with 120 Ω carbon resistors in series with each lead.				
GENERATOR FREQUENCY	DIAL SETTING	INDICATOR	ADJUST	REMARKS
7. 108MC	Set at high end.	DC probe of VTVM to point Δ ; common to ground.	A14, A15, A16	Adjust for maximum.
8. 90MC	Tune to signal.	"	A17	Rock tuning and adjust for maximum. Repeat steps 7 and 8 until no further improvement can be made.



TONECREST
 MODELS T-730A, T-732A

FOLDER 12

WIRING DATA

General-use Unshielded Hook-up Wire	Use BELDEN No. 8530 (Solid) Available in 12 Colors
Power Cord	Use BELDEN No. 8524 (Stranded) Available in 12 Colors
Power Cord (Interlock Type)	Use BELDEN No. 1706 (Plastic) or 17126 (Rubber) - 6 Ft.
Low-Loss Shielded Lead (Interconnecting)	Use BELDEN No. 8874 (Rubber) or 8895 (Plastic) - 9 Ft.
Phono Pick-up Arm Cable	Use BELDEN No. 8401 or 8421
	8430 (Two Conductor-Unshielded)
	8429 (Two Conductor-Shielded)
	8419 (Three Conductor-Shielded)

TUBES

ITEM No.	USE	TYPE	ITEM No.	USE	TYPE
V1	FM RF Amp-FM Conv.	6C9	V5	AF Amp-MPX Amp-Cathode Follower	6EA8
V2	AM Conv.	6BE6	V6	AF Amp-Output	6BM8
V3	AM-FM IF Amp.	6AU6A	V7	AF Amp-Output	6BM8
V4	Limiter	6AU6A			

POWER RECTIFIERS

ITEM No.	MEASURED CURRENT	ORIGINAL Part or Type No.	RECTIFIERS
X1	.105A		MALLORY PART No. A300 or D300 RCA PART No. 1N1783 or 1N2862 or 1N3194 SARKES TARZIAN PART No. F-4 or 40H

ELECTROLYTIC CAPACITORS

ITEM No.	RATING	REPLACEMENT DATA
C1A	150 200	1062
B	150 200	
C	40 150	
C2	80 150	
C3	2 50	
C4	2 50	
C5	2 50	
C6	10 25	
C7	10 25	
C8	10 12NP	
C9	10 12NP	

* Not normally in distributor's stock. Available thru distributor on order to manufacturer.

FIXED CAPACITORS

ITEM No.	RATING	REMARKS	REPLACEMENT DATA
C10	7mmf		
C11	7mmf		
C12	.002		
C13	.002		
C14	.002		
C15	.002		
C16	15 NPO 10%	(22) †	
C17	.002		
C18	33 NPO 10%		
C19	2mmf		
C20	2mmf		
C21	.002		
C22	4 NPO ± .25mmf	Note 1	
C23	1.5 N1000 ± .25mmf	Note 1	
C24	33		
C25	1-4mmf		
C26	6.8		
C27	.01	(.005) †	
C28	.01		
C29	.05 50V		
C30	.01		
C31	.05 50V		
C32	47 NPO 10%		
C33	.01		
C34	18 NPO 5%		
C35	.005		
C36	.01	Note 1	
C37	47 NPO 10%		
C38	100 N1500		
C39	100		
C40	.005		
C41	330		
C42	330		
C43	100 N1500		
C44	.05 50V		
C45	.22 200V		
C46	.001		
C47	.01		
C48	.002		
C49	.01		
C50	.01		
C51	.002		
C52	.01		

* Not normally in distributor's stock. Available thru distributor on order to manufacturer.
† Alternate Value Note 1 Not used in some versions

PARTS LIST AND DESCRIPTION CONTROLS

All wattages 1/2 watt, or less, unless otherwise listed.

ITEM No.	USE	RESISTANCE	REPLACEMENT DATA
R1A	Loudness, Left	3meg	435
B	Loudness, Right	3meg	
R2A	Balance, Left	500K	436
B	Balance, Right	500K	
R3A	Tone, Left	2meg	437
B	Tone, Right	2meg	

* "SNAPTROL"

① Use QCB1 instead of Tab Mount Plate in TM5.

RESISTORS (Power and Special)

ITEM No.	RATING	REPLACEMENT DATA
R48	150Ω 2W (Fusible)	

COILS (RF-IF)

ITEM No.	USE	REPLACEMENT DATA
L1	FM Ant.	
L2	FM RF	
L3	FM Osc.	
L4	1st FM IF	
L5	Loopstick	
L6	AM Osc.	
L7	1st AM IF	
L8	2nd FM IF	
L9	2nd AM IF	
L10	Ratio Detector	

TRANSFORMER (POWER)

ITEM No.	RATING	REPLACEMENT DATA
T1	117VAC .54A	1220

TRANSFORMER (AUDIO OUTPUT)

ITEM No.	IMPEDANCE	REPLACEMENT DATA
T2	4300Ω	1224
T3	4300Ω	1224

SPEAKER

ITEM No.	TYPE	REPLACEMENT DATA
SP1	4" PM	2679
SP2	6 1/2" PM	2680
SP3	4" PM	2679
SP4	6 1/2" PM	2680

PHONO CARTRIDGE & NEEDLES

* NEEDLE LISTINGS SHOWN ARE FOR RESPECTIVE REPLACEMENT CARTRIDGES ONLY.

ITEM No.	REPLACEMENT DATA
M1	

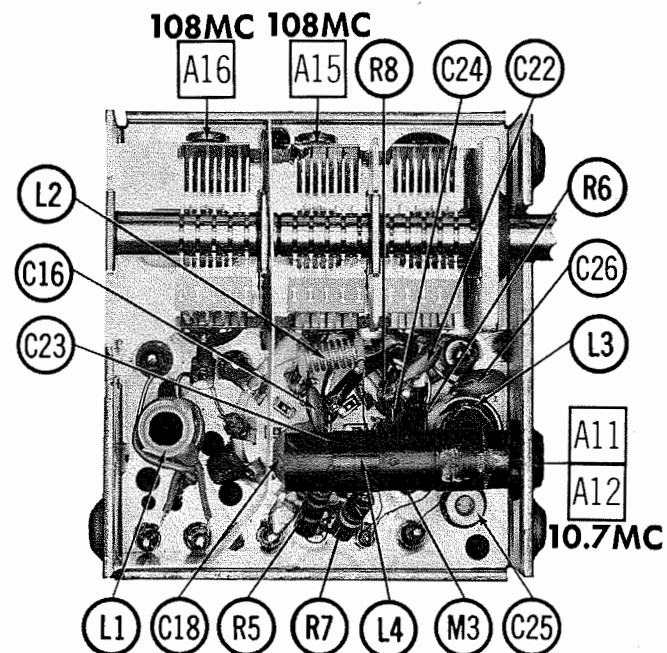
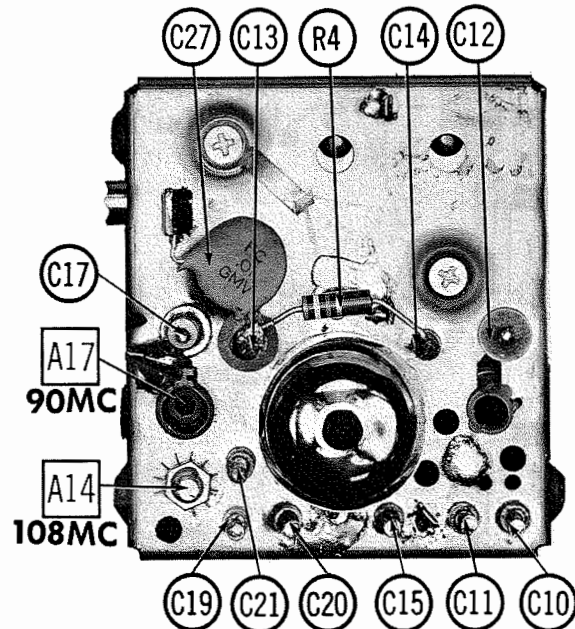
MISCELLANEOUS

ITEM No.	PART NAME	Tonecrest PART No.	NOTES
M2	FM Tuner	9065	
M3	Diode		Includes AM Tuning Gang
M4	Diode		AFC
M5	Diode		AM Det.
M6	Diode		Ratio Det.
M7	Switch		Function

CABINETS & CABINET PARTS

(When Ordering Specify Model, Chassis & Color)

ITEM	PART No.	ITEM	PART No.
Dial Plate	5092	Cabinet	Model 730 (Mah.)
Dial Bezel	5094	Cabinet	Model 732A (Wal.)
			T220A
			T222A



FM RF SUBCHASSIS

MODELS T-730A, T-732A

FOLDER 12