

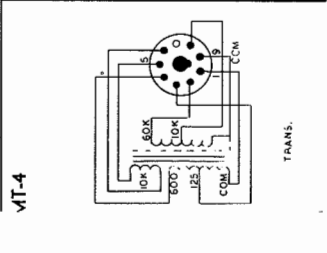
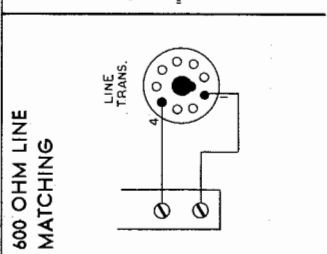
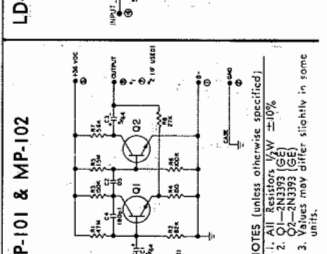
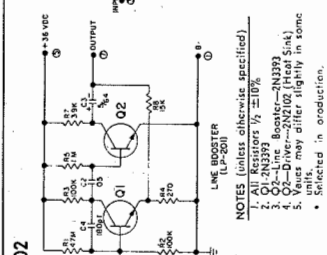
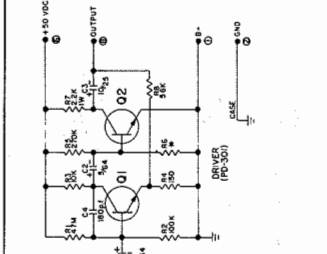
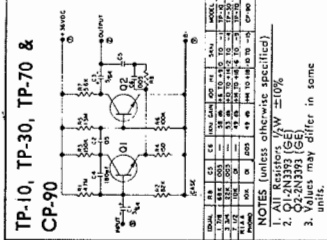
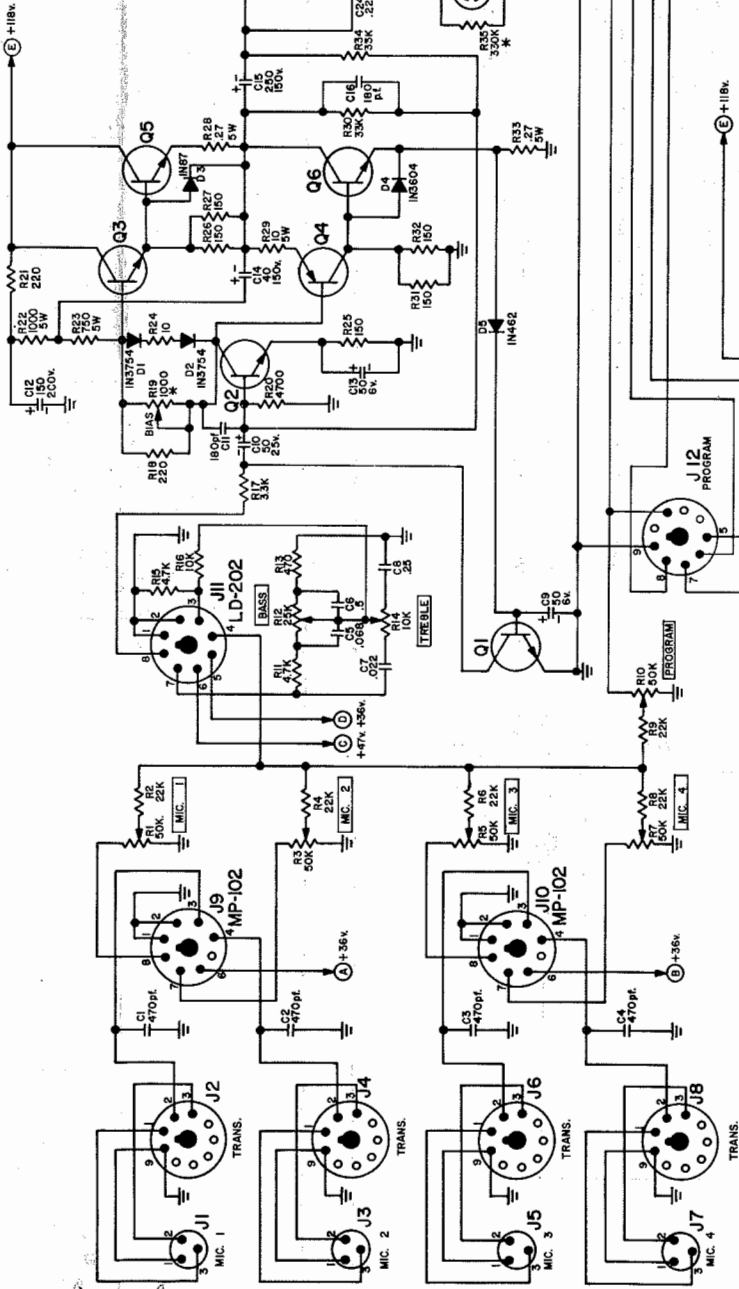
NOTES (UNLESS OTHERWISE SPECIFIED)

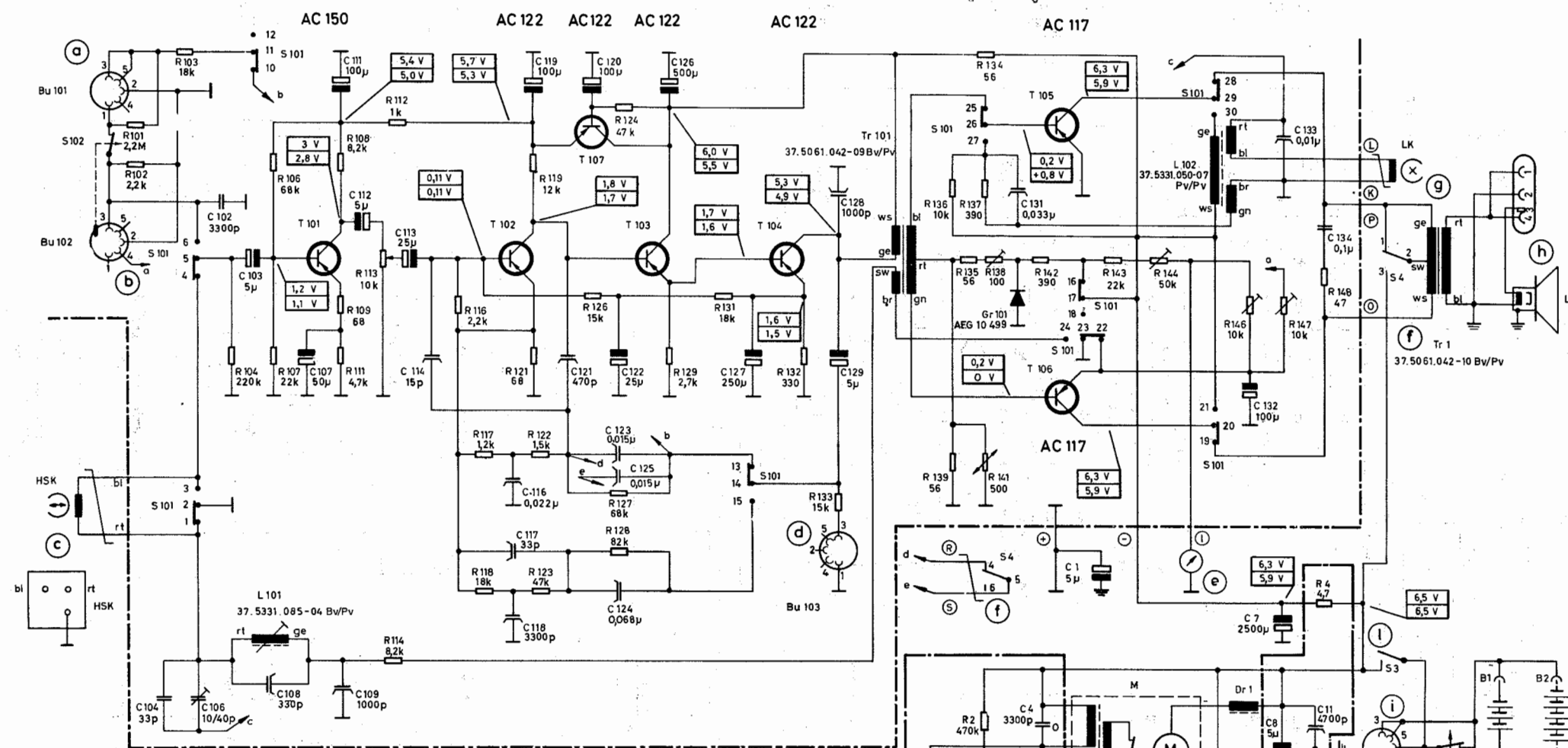
- 1. RESISTORS 1/2W ±10%
- 2. CAPACITORS IN MFD.
- 3. ELECTROLYTICS HAVE POLARITY SHOWN.
- 4. SOME VALUES MAY DIFFER WITH EACH UNIT. NEW SCHEMATICS WILL SHOW WHEN MAJOR CHANGES OCCUR.
- 5. * MEANT SINK MOUNTED.
- 6. * SELECTED IN PRODUCTION.
- 7. ALL VOLTAGES + WITH RESPECT TO GROUND. (120 VAC LINE)
- 8. * EXTERNAL FUNCTIONS.

- 2N3393 -- Q101, Q102
- 40232 -- Q1
- 2N3442 -- Q2, Q3
- 1N3773 -- Q4, Q5, Q6, Q7, Q8
- 3A450 -- Q9, Q10, Q11, Q12
- 3A450 -- Q13, Q14
- 3N3754 -- Q15, Q16, Q17
- 1N3604 -- Q18, Q19, Q20, Q21

NOTES (UNLESS OTHERWISE SPECIFIED)

- 1. RESISTORS 1/2W ±10%
- 2. CAPACITORS IN MFD.
- 3. CAPACITORS OVER ONE MFD. ARE ELECTROLYTICS WITH POLARITY SHOWN.
- 4. * MEANT SINK MOUNTED.
- 5. * R10 SET FOR 250 MA. DRAIN CURRENT.
- 6. C18-A-B-C, C18-A-B-C, CAPACITORS TO BE CHANGED TO 100 P.F. WHEN MAJOR CHANGES OCCUR.
- 7. SOME VALUES MAY DIFFER FROM SCHEMATIC.
- 8. NEW SCHEMATIC IS ISSUED WITH MAJOR CHANGES.
- 9. REMOVED.





Reference to the schematic diagram

- a = Radio and Phono socket
- b = Microphone socket
- c = Record/playback head
- d = Earphone socket
- e = Battery power and level meter
- f = On/off-switch for power stage S 4
- g = Erase head
- h = External loudspeaker socket 4 to 5 Ω
- i = 6 v external power source
- k = Switch-off contacts S 5 and S 6 for drycells and accumulator
- l = On/off-switch S 3
- m = SPDT-switch S 2, actuated during fast rewind and forward wind
- n = Oscillator for the governor controlled motor (100 kc approx.)

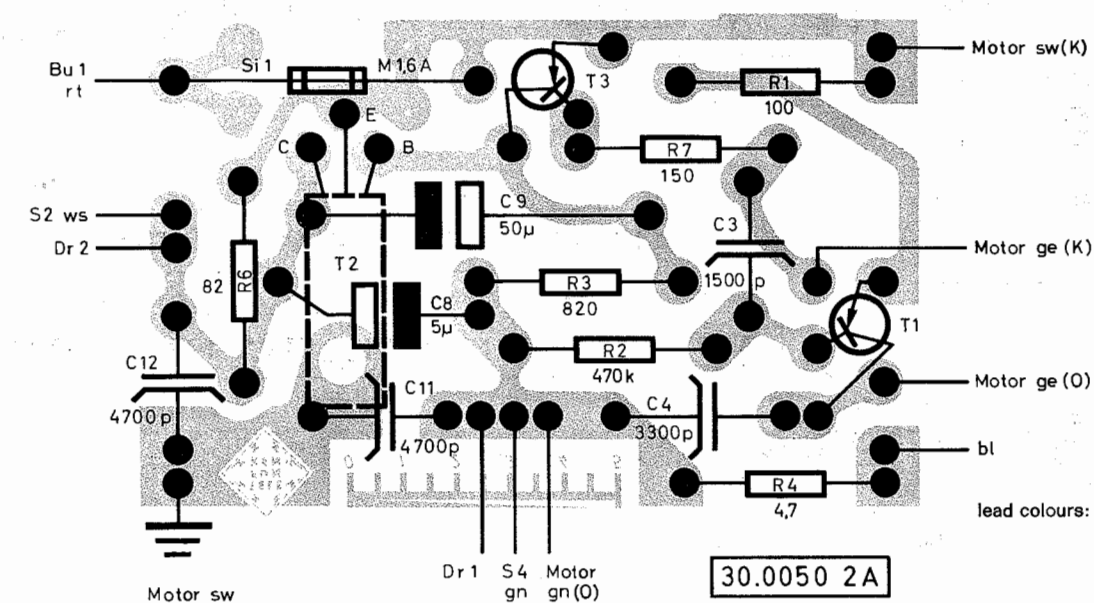
Measuring values

according to a battery voltage of 6.5 volts
values measured with instrument 50 kΩ/v
Tolerances ± 10 %

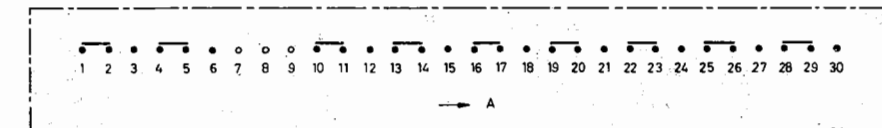
Playback
Recording

Power rating of resistors
1/8 watt with the exception of R 6 = 1/2 watt

Printed wiring of the motor control (view of the components side)



lead colours: rt = red
ws = white
sw = black
gn = green
bl = blue
ge = yellow



Switch shown in position "playback"

- a Radio and phono socket
- b Microphone socket
- c Record / playback head
- d Earphone socket
- e Level meter
- f On / off-switch S 11
- g Erase head
- h External loudspeaker socket 3,5 ... 5 Ω
- h₁ Loudspeaker-switch S 7 (in "on" position)
- i Radio-microphone-switch S 2
- k Track selector switch S 3, S 4
- l Tape-end stop contacts S 8
- m Voltage selector S 9 (see page 15 and 16)
- n Recording level control / Volume control
- o Tone control
- p Position
- q Wafer
- r View from this end
- s All wafers seen from bottom of set switch position marked in diagram parallel operation
- t Colour bar
- u Playback equalization switch S 301
Switch position shown: 9,5 cms per second, or 3 3/4
- v Recording / playback switch S 101, S 201
switch position marked in diagram:
- v₁ Playback-switch S 1
Switch position shown: playback

Power rating of resistors 1/4 W

Playback
Recording

Values measured with instrument 50 kΩ/V
with no audio signal applied

br: brown
rt: red
ge: yellow
gn: green
vi: violet
ws: white
tp: transparent

Power consumption approx. 30 watts

[...] Electrical values for M 203 studio 4

TELEFUNKEN TAPE RECORDER MODEL STUDIO 2, 4

COURTESY OF TELEFUNKEN SALES CORP.

