

CABINET-REAR VIEW

HORIZONTAL SWEEP CIRCUIT ADJUSTMENTS

Tune in a TV station and set all controls for normal operation. Adjust Horizontal Stabilizer Coil (Horizontal Hold) until it is virtually impossible to lose horizontal sync when switching from channel to channel.

DISASSEMBLY INSTRUCTIONS

CHASSIS REMOVAL

1. Remove 5 screws holding back cover and remove back cover. On some models it may be necessary to disconnect antenna leads. Remove all knobs.
2. Disconnect yoke plug, high voltage anode lead, picture tube socket, speaker leads, ground wire, and tuner connector.
3. Remove 8 screws holding chassis and 5 screws holding tuner and controls.

4. Remove earphone jack nut. Lift out chassis and tuner.

NOTE: Most components may be serviced without removing chassis.

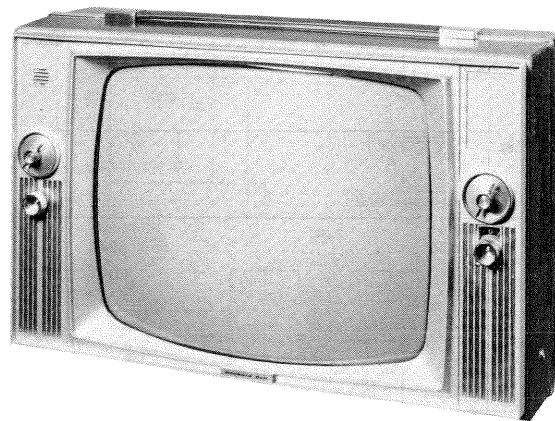
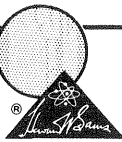
PICTURE TUBE REMOVAL

1. Follow "Chassis Removal" procedure. Lay set face down on a soft protective surface.
2. Remove 2 screw holding picture tube retainer wire and lift out picture tube. Do not lift out by the neck of the tube.

SET 811 FOLDER 3

PACKARD BELL CHASSIS
88-14K/Q/R/S/T/V/W/WA/X/Y/Z

PHOTOFACT® Folder



MODEL 19T43A

TRADE NAME	PACKARD BELL	Model	Chassis	Model	Chassis	Remote Control Transmitter	Remote Control Receiver
		19T23 ...	88-14K	19T36	88-14Y		
		19T24 ...	88-14R	19T37	88-14Z		
		19T25 ...	88-14R	19T40A	88-14WA		
		19T26 ...	88-14S	19T42A	88-14Z		
		19T27 ...	88-14T	19T43A	88-14Y	WRT-9	WRR-14
		19T33 ...	88-14W	19W1	88-14Q		
		19T34 ...	88-14X	19W1C	88-14V		
		19T35 ...	88-14X				

SUPPLIER	For current address, see Annual Index.						
TYPE SET	Television Receiver						
TUBES	VHF: Sixteen, UHF: One Transistor						
POWER SUPPLY	110-120 Volts AC, 60 Cycles						
TUNING RANGE	Channels 2 thru 13 VHF, 14 thru 83 UHF, Video IF 45.75MC, Sound IF 41.25MC (Intercarrier)						
				RATING	203 Watts, 1.9 Amp. @ 117 Volts AC		

SERVICING IN THE FIELD

SAFETY GLASS

The safety glass is an integral part of the picture tube.

FUSE OR FUSE DEVICE

A Circuit Breaker is used for low voltage power supply protection and may be reset by depressing the reset button. (See "Tube Placement Chart" for location.)

VHF OSCILLATOR ADJUSTMENT

The Fine Tuning mechanically engages oscillator slug for adjustment (one slug for each channel).

AGC

The AGC may be varied by means of an AGC Control. (See "Tube Placement Chart" for location.)

HORIZONTAL OSCILLATOR FIELD ADJUSTMENT

The Horizontal Frequency Slug is used for the horizontal hold. (See "Tube Placement Chart" for location.)

WIDTH

The width may be varied by a Width Control. (See "Tube Placement Chart" for location.)

FOCUS

The focus may be varied by means of a Focus Control. (See "Tube Placement Chart" for location.)

HORIZONTAL DRIVE

The horizontal drive may be varied by a Horizontal Drive Control. (See "Tube Placement Chart" for location.)

CENTERING

Centering is accomplished by 2 magnetic rings located on yoke rear cover.

HOWARD W. SAMS & CO., INC. Indianapolis, Indiana 46206



The listing of any available replacement part herein does not constitute in any case a recommendation, warranty or guaranty by Howard W. Sams & Co., Inc., as to the quality and suitability of such replacement part. The numbers of these parts have been compiled from information furnished to Howard W. Sams & Co., Inc., by the manufacturers of the particular type of replacement part listed. NA639

Reproduction or use, without express permission, of editorial or pictorial content, in any manner, is prohibited. No patent liability is assumed with respect to the use of the information contained herein. © 1966 Howard W. Sams & Co., Inc., Indianapolis, Indiana 46206. Printed in U. S. of America

DATE 4-66 SET 811 FOLDER 3

PACKARD BELL CHASSIS
88-14K/Q/R/S/T/V/W/WA/X/Y/Z

IMPORTANT FILING NOTICE

Some models covered by this PHOTOFACT Folder employ chassis in addition to the TV chassis. PHOTOFACT Folders covering these additional chassis are packaged immediately behind this Folder and should be filed with this Folder in the yellow filing jacket provided. For specific coverage see index below.

INDEX

Remote Control Receiver WRR-14 .. SET 811, FOLDER 3-A

PACKARD BELL CHASSIS
88-14K/Q/R/S/T/V/W/WA/X/Y/Z

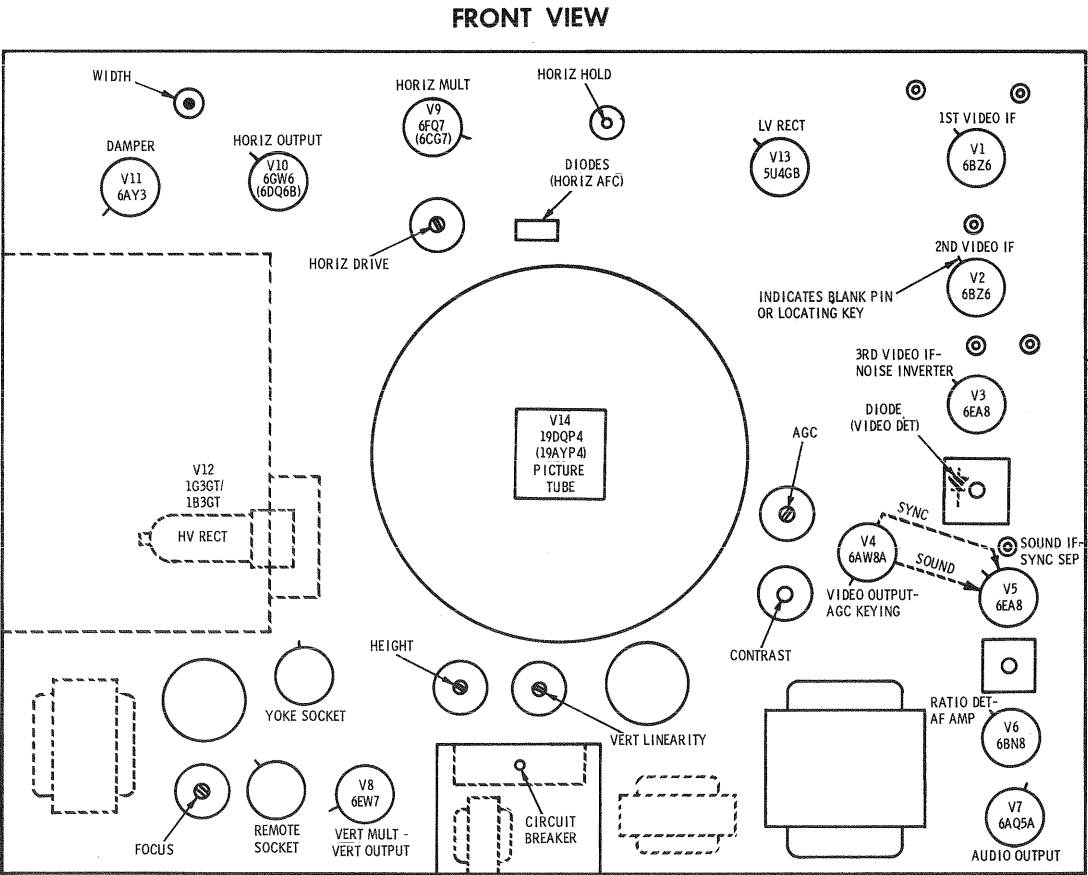
SET 811 FOLDER 3

RESISTANCE MEASUREMENTS

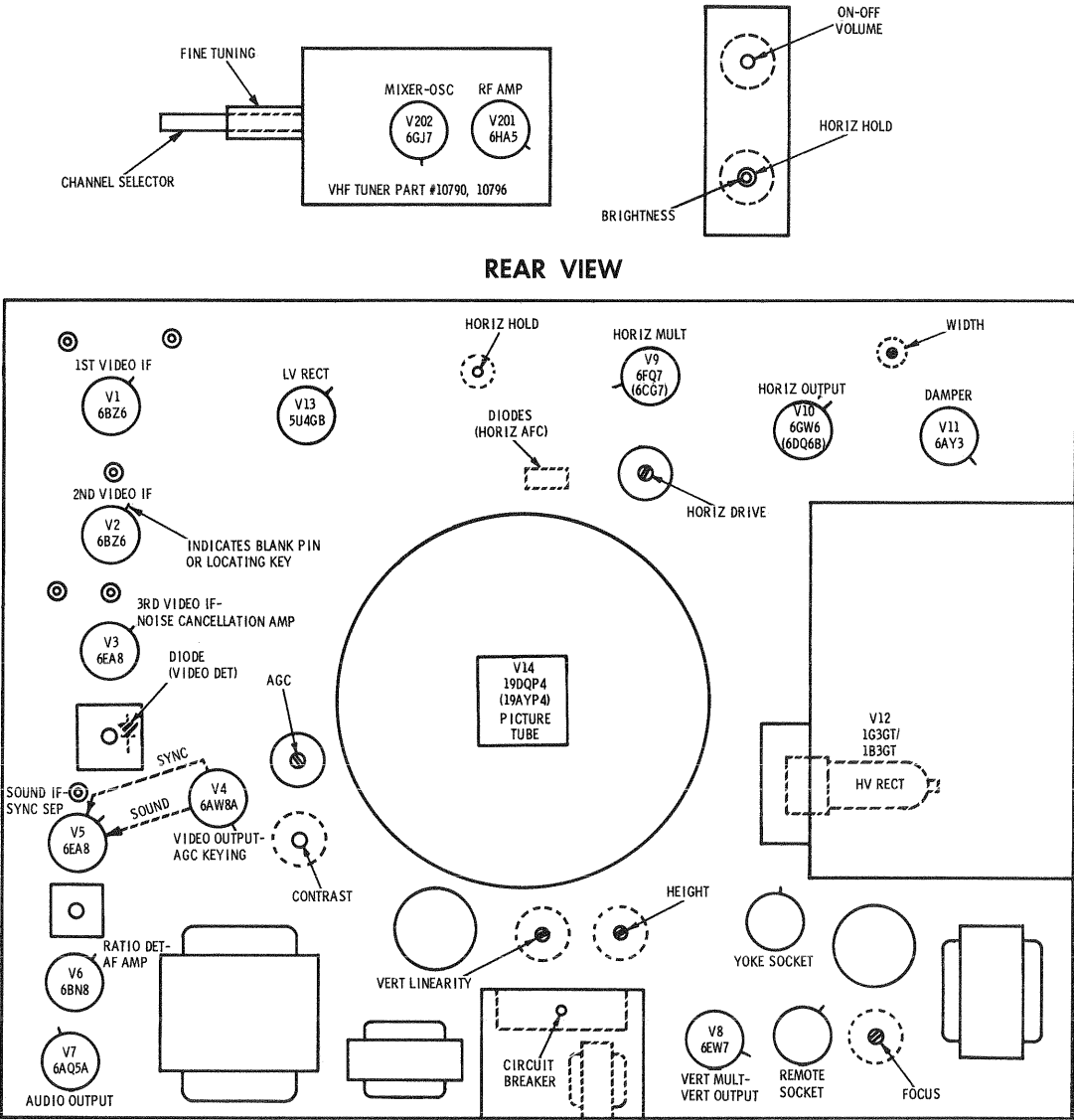
ITEM	TUBE	Pin 1	Pin 2	Pin 3	Pin 4	Pin 5	Pin 6	Pin 7	Pin 8	Pin 9
V1	6BZ6	60K	56Ω	FIL	FIL	526Ω ▲	526Ω ▲	0Ω		
V2	6BZ6	80K #	87K #	FIL	FIL	490Ω †	490Ω †	56Ω ▲		
V3	6EA8	28K †	0Ω	8300Ω †	FIL	FIL	7300Ω †	120Ω	800Ω ●	220K
V4	6AW8A	6800Ω †	110K †	300K	FIL	FIL	0Ω	170Ω ●	18K †	6800Ω †
V5	6EA8	226K †	100K	46K †	FIL	FIL	46K †	0Ω	0Ω	4.7meg
V6	6BN8	1N	22K	1N	FIL	FIL	0Ω	226K †	4.7meg	470Ω
V7	6AQ5A	470K	560Ω	FIL	FIL	393Ω	23Ω †	470K		
V8	6EW7	778Ω †	NC	2.5meg	FIL	FIL	5.2meg ‡	2.4meg	0Ω	330Ω
V9	6FQ7	6800Ω †	1.8meg	1200Ω	FIL	FIL	100K †	100K	1200Ω	0Ω
V10	6GW6	TP	FIL	TP	10K †	750K	NC	FIL	0Ω	TOP CAP 11.2Ω ‡
V11	6AY3	NC	23Ω †	NC	FIL	FIL	TP	NC	TP	7meg #
V12	1G3GT/1B3GT	PINS 1 THRU 8 HAVE INFINITE RESISTANCE								
V13	5U4GB	NC	70K #	NC	20Ω	NC	21Ω	NC	70K #	
V14	19DQP4	FIL	22K	1meg ‡	3.5meg	NC	NC	150K	FIL	
V201	6HA5	2.4meg	0Ω	FIL	FIL	5100Ω †	0Ω	0Ω		
V202	6GJ7	0Ω	220K	0Ω	FIL	FIL	4900Ω †	26K †	8600Ω †	47K

- # THIS READING WILL VARY DEPENDING UPON THE CONDITION OF THE ELECTROLYTIC IN THE CIRCUIT.
- READING DEPENDS ON POLARITY OF METER CONNECTIONS.
- † MEASURED FROM PIN 2 OF V13.
- ‡ MEASURED FROM PIN 9 OF V11.
- ▲ MEASURED FROM PIN 2 OF V2.
- NC NO CONNECTION

TUBE PLACEMENT CHART



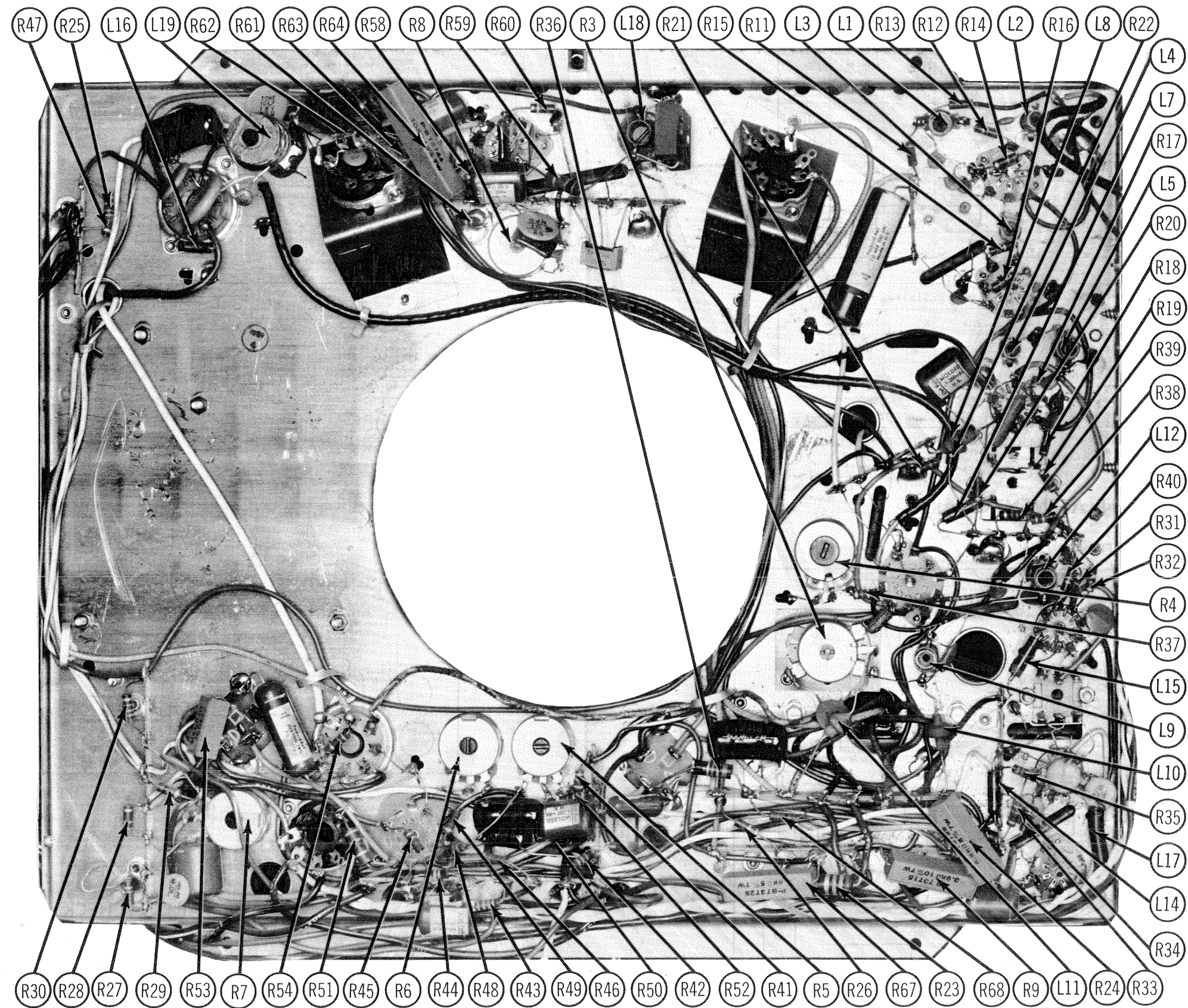
TUBE PLACEMENT CHART



TUBE FAILURE CHECK CHART

The following chart lists tubes whose failures are most likely to produce indicated symptoms. Refer to tube placement chart for location and type of tube.

POWER SUPPLY FAILURE No raster, no sound Circuit Breaker F1, V13	LOSS OF PICTURE OR SOUND No pic, no sound, has raster V1, V2, V3, Video Detector X1, V4 No pic, no sound, has snow V201, V202, V1 No pic, has sound, has raster V4, V14 Has pic, no sound V5, V6, V7 Overloaded picture V4
SWEEP FAILURE No raster, has sound V9, V10, V11, V12, V14 No vertical deflection V8 Poor vert. linearity or foldover V8 Poor horiz. linearity or foldover V9, V10, V11 Narrow picture V9, V10, V11, V13 Vert. off freq. V8 Horiz. off freq. AFC Diode X2, V9	SYNC FAILURE No vert. sync V5 No horiz. sync V5 No vert. or horiz. sync V5



CHASSIS — FRONT VIEW

PACKARD BELL CHASSIS
88-14K/Q/R/S/T/V/W/WA/X/Y/Z

FOLDER 3

UHF TUNER PARTS LIST AND DESCRIPTION

TRANSISTORS

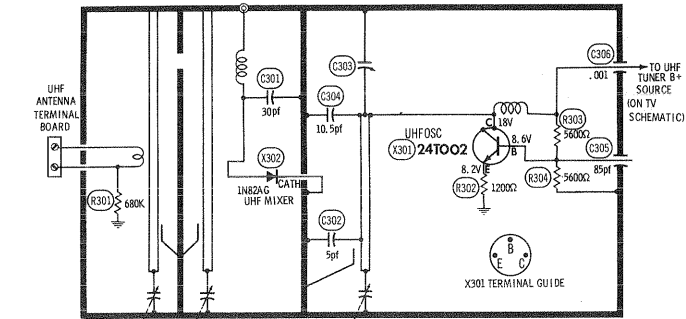
ITEM No.	ORIG. TYPE	USE	REPLACEMENT DATA			NOTES
			DELCO PART No.	GENERAL ELECTRIC PART No.	RCA PART No.	
X301		UHF Oscillator		GE-11		NPN, Packard Bell Part #24T002

POWER RECTIFIERS & SIGNAL DIODES

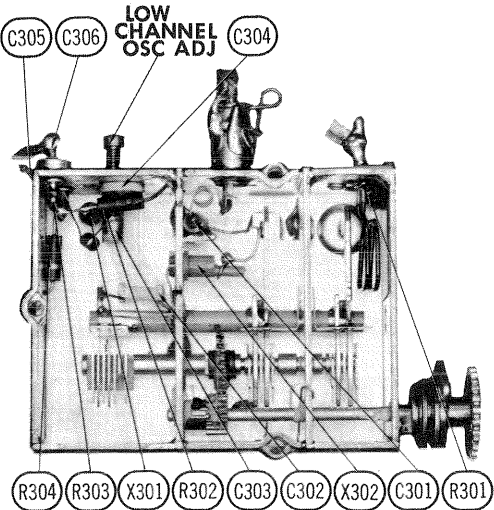
ITEM No.	MEASURED CURRENT	ORIGINAL Part or Type No.	RECTIFIERS				DIODES
			GENERAL ELECTRIC PART No.	MALLORY PART No.	RCA PART No.	SARKES TARZIAN PART No.	
X302		1N82AG					GENERAL ELECTRIC PART No.

CAPACITORS

ITEM No.	RATING	REMARKS	REPLACEMENT DATA					
			AEROVOX PART No.	CENTRALAB PART No.	CORNELL-DUBILIER PART No.	ELMENCO PART No.	MALLORY PART No.	SPRAGUE PART No.
C301	30			DD-050	CZ601CH5R0D	CCD-050	GP550	5GA-V50
C302	5							
C303				DD-100	CZ601CG100K	CCD-100	GP410	5GA-Q10
C304	10, 5							
C305	85							
C306	.001		EF-001	MFT-1000		CCF-102	CT280A	



A PHOTOFAC STANDARD NOTATION SCHEMATIC
© Howard W. Sams & Co., Inc. 1966



UHF TUNER 10820

ALIGNMENT INSTRUCTIONS

Use an isolation transformer and maintain voltage at 117 volts. Allow a 20-minute warm-up period for the receiver and test equipment.
Suggested Alignment Tools: A1 thru A10 GENERAL CEMENT #9302, 8606, 8869 ... WALSCO #2511, 2544, 2586
Mixer Plate Coil ... GENERAL CEMENT #9302, 9296, 9297 ... WALSCO #2511, 2546, 2547

VIDEO IF ALIGNMENT

Connect the synchronized sweep voltage from the sweep generator to the horizontal input of the oscilloscope for horizontal deflection. Use only enough generator output to provide a usable indication. Note: Response may vary slightly from those shown. Connect a variable bias supply to the IF AGC line (point ⬠) and adjust to obtain a response curve which shows no indication of overload. Disable Oscillator section of Mixer-Osc. Set the Channel Selector to any non-interfering channel.

INDICATOR	GENERATOR COUPLING	SWEEP GENERATOR FREQUENCY	MARKER GENERATOR FREQUENCY	ADJUST	REMARKS
1.	Connect DC probe of a VTVM thru a 47K resistor to point ⬠. Common to ground.		41.25MC 47.25MC	A1 A2	Adjust for MINIMUM.
2.	Connect DC probe of a VTVM thru a 47K resistor to point ⬠. Common to ground.		44.0MC 43.0MC 45.0MC 45.75MC 43.0MC	A3 A4 A5 A6 Mixer Plate Coil	Adjust for maximum.
3.	Connect vertical input of a scope to point ⬠. Low side to ground.	44MC (10MC Sweep)	41.25MC 42.6MC 44.0MC 45.75MC 47.25MC		Adjust for maximum gain and symmetry of response with markers as shown in Figure 1. In order to obtain a proper response, it may be necessary to slightly retouch A 3, A4, A5, A6, and Mixer Plate Coil.

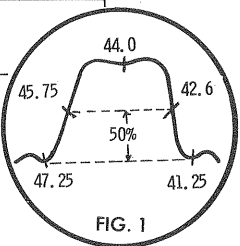


FIG. 2

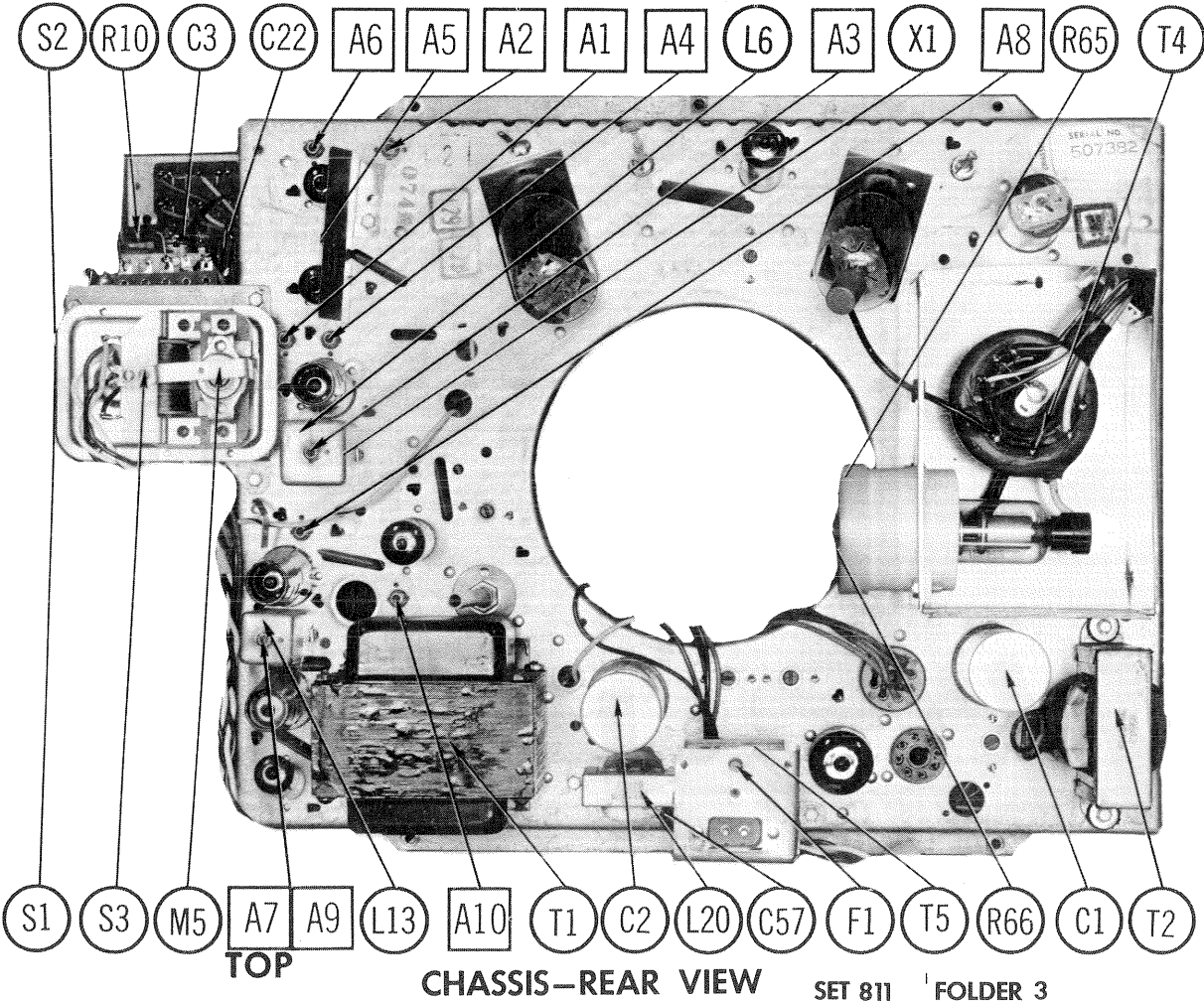
FIG. 1

4.5 MC TRAP ALIGNMENT

Tune in a strong TV signal and set the Contrast at maximum. Adjust the Fine Tuning until a beat pattern is visible on the screen. Adjust A10 for MINIMUM beat interference.

SOUND IF ALIGNMENT

SIGNAL GENERATOR COUPLING	SIGNAL GENERATOR FREQUENCY	CHANNEL	CONNECT VTVM	ADJUST	REMARKS
4.	High side thru a .001 capacitor to point ⬠, low side to ground.	4.5MC (Unmod.)	Any non-interfering channel	DC probe to point ⬠, common to ground.	A7, A8 Adjust for maximum.
5.	"	"	"	DC probe to point ⬠, common to point ⬠.	A9 Adjust for zero. A positive and negative reading will be obtained on either side of the correct setting.



CHASSIS-REAR VIEW

SET 811 FOLDER 3

PACKARD BELL CHASSIS
88-14K/Q/R/S/T/V/W/WA/X/Y/Z

FOLDER 3

VHF TUNER PARTS LIST AND DESCRIPTION

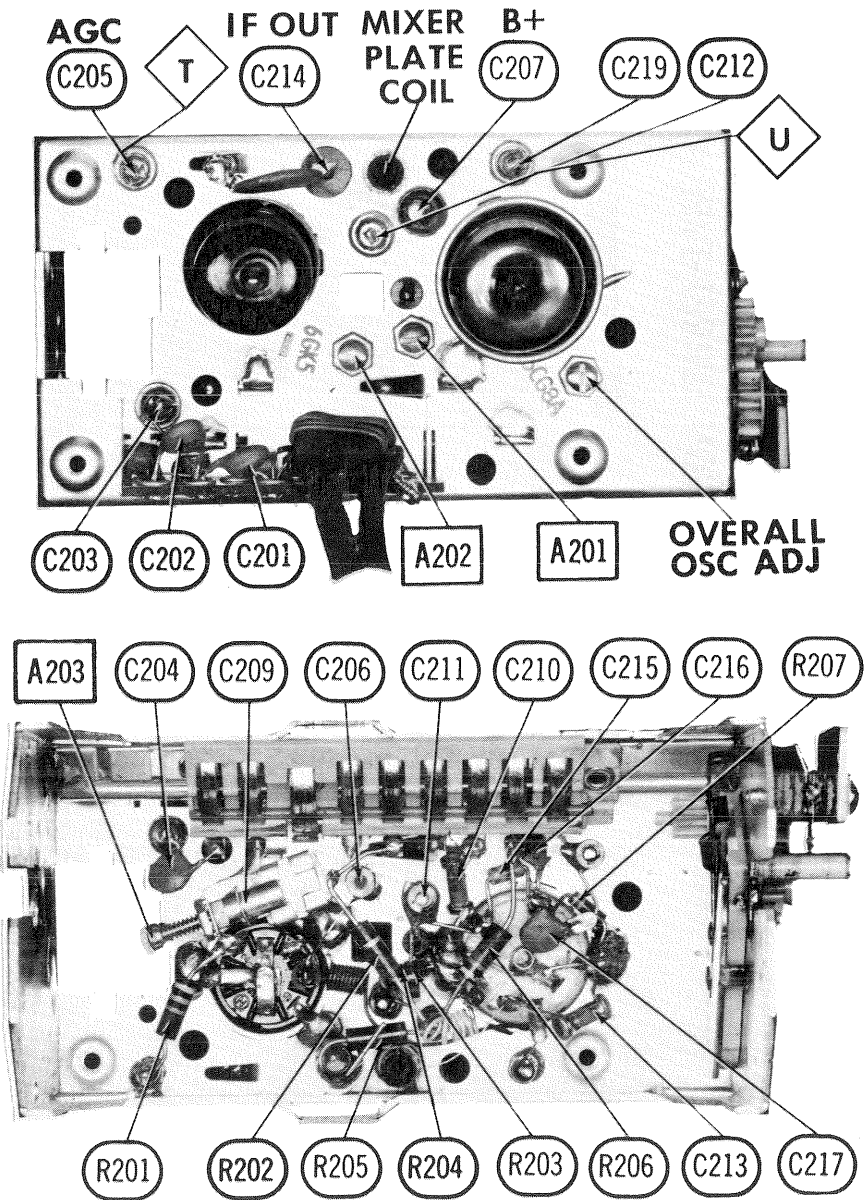
TUBES

* AMPEREX * GENERAL ELECTRIC * RCA * RAYTHEON * SYLVANIA *					
ITEM No.	USE	TYPE	ITEM No.	USE	TYPE
V201	RF Amp.	6GK5	V202	Mixer - Osc.	6CG8A

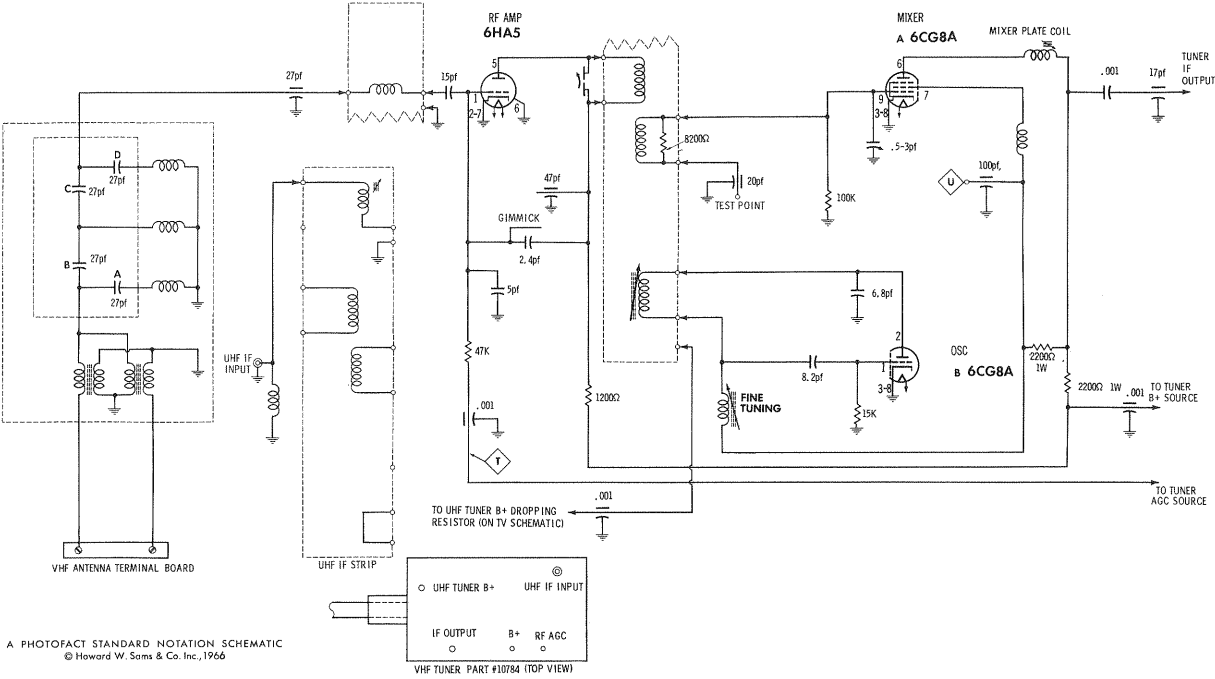
FIXED CAPACITORS

ITEM No.	RATING	REMARKS	REPLACEMENT DATA					
			AEROVOX PART No.	CENTRALAB PART No.	CORNELL-DUBILIER PART No.	ELMENDO PART No.	MALLORY PART No.	SPRAGUE PART No.
C201A	27 N750 5%			TCN-27			CN7-427	10TCU-Q27
B	27 N750 5%			TCN-27			CN7-427	10TCU-Q27
C202A	27 N750 5%			TCN-27			CN7-427	10TCU-Q27
B	27 N750 5%			TCN-27			CN7-427	10TCU-Q27
C203	30			DTZ-20	C10Q2C			10TCC-Q20
C204	20			MFT-1000		CCF-102	CT280A	
C205	.001		EF-001					
C206	.5-3.5			MFT-1000		CCF-102	CT280A	
C207	.001		EF-001					
C208	100			829-7				
C209	1.6-7.0			TCZ-33	C10Q33C		CNO-433	10TCC-Q33
C210	33							
C211	.5-3.5							
C212	40							
C213	2.0 N1500							
C214	.001		EF-001	MFT-1000		CCF-102	CT280A	
C215	.75mmf							10TCR-Q15
C216	15 N220 5%							
C217	2.2 N220 ±.25mmf							
C218	.5-3.5							
C219	.001		EF-001	MFT-1000		CCF-102	CT280A	

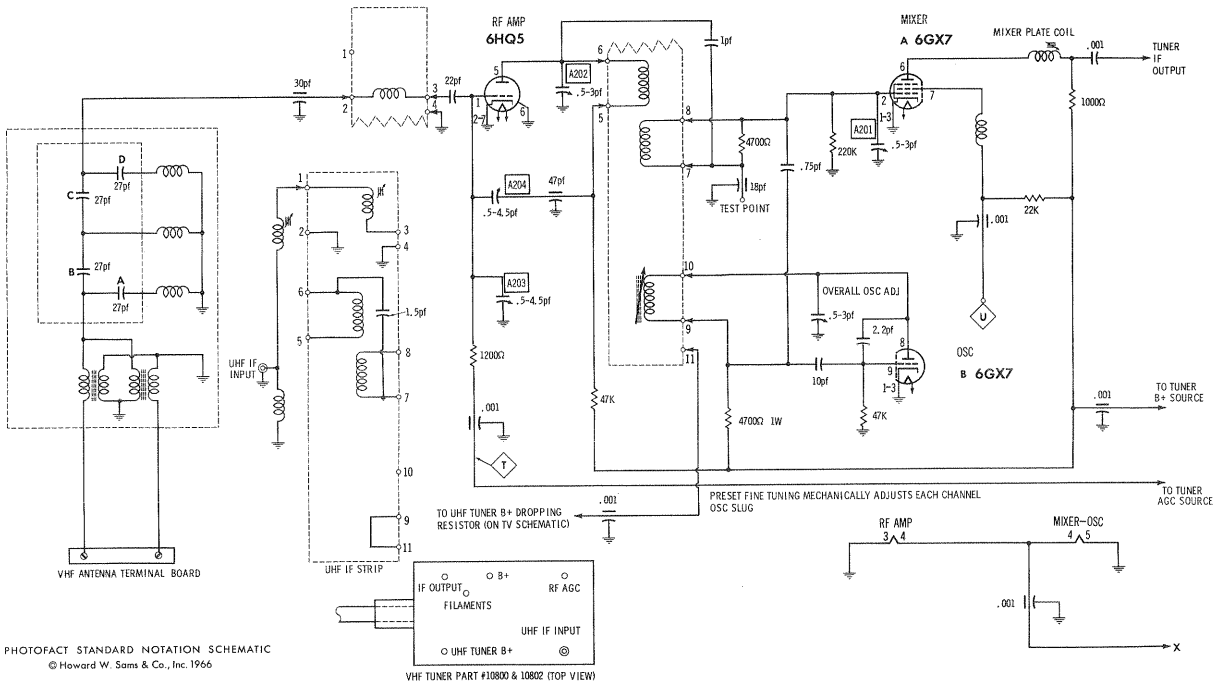
* Not normally in distributor's stock. Available thru distributor on order to manufacturer.



VHF TUNER 10792



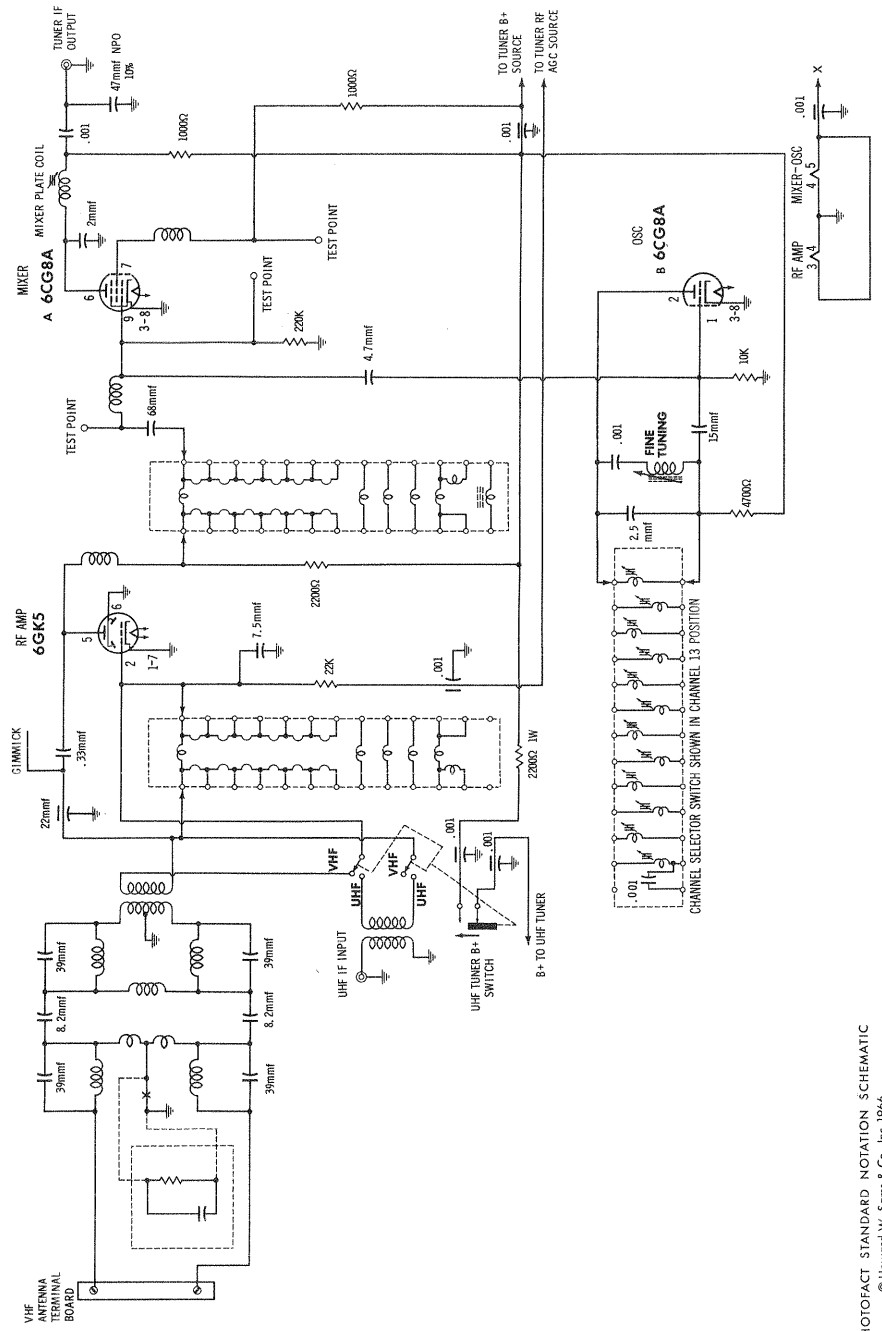
VHF TUNER 10784



VHF TUNERS 10800, 10802

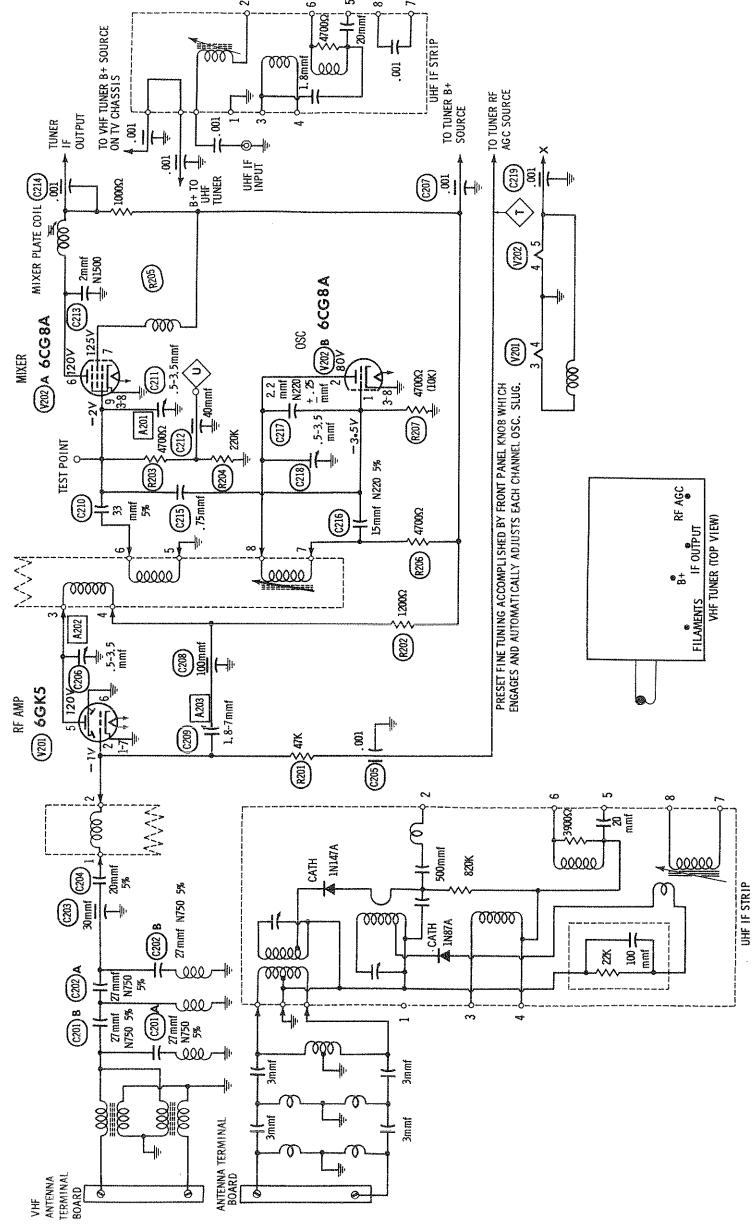
PACKARD BELL CHASSIS
88-14K/Q/R/S/T/V/W/WA/X/Y/Z

FOLDER 3



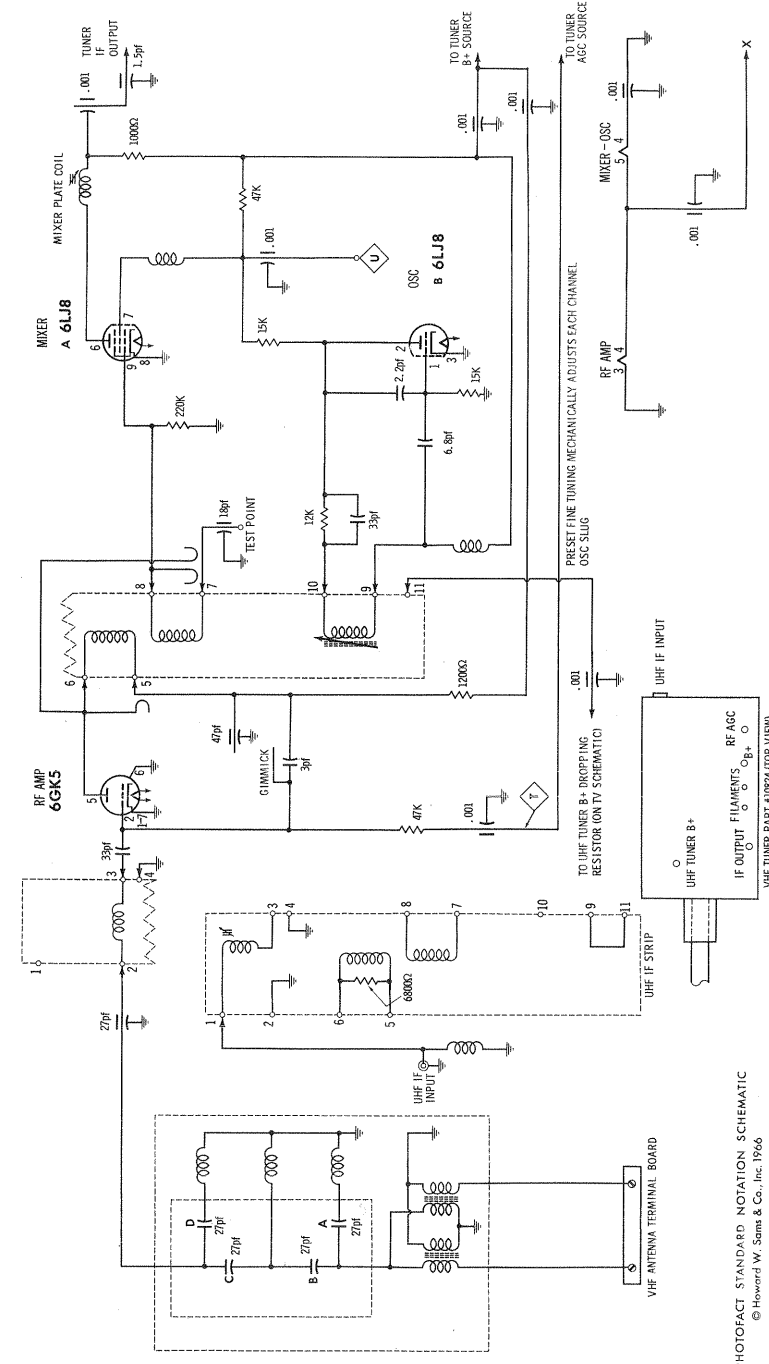
A PHOTOFACT STANDARD NOTATION SCHEMATIC
© Howard W. Sams & Co., Inc. 1966

13 POSITION WAFER-TYPE VHF TUNER 10769



A PHOTOFACT STANDARD NOTATION SCHEMATIC
© Howard W. Sams & Co., Inc. 1966

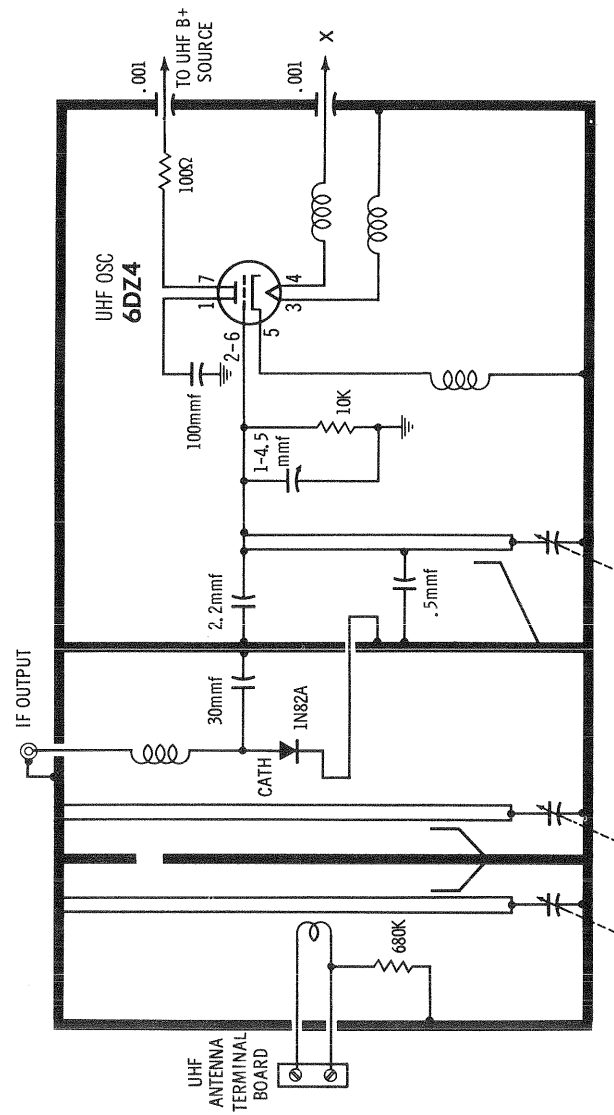
13 POSITION TURRET-TYPE VHF TUNER 10792



A PHOTOFACT STANDARD NOTATION SCHEMATIC
© Howard W. Sams & Co., Inc. 1966

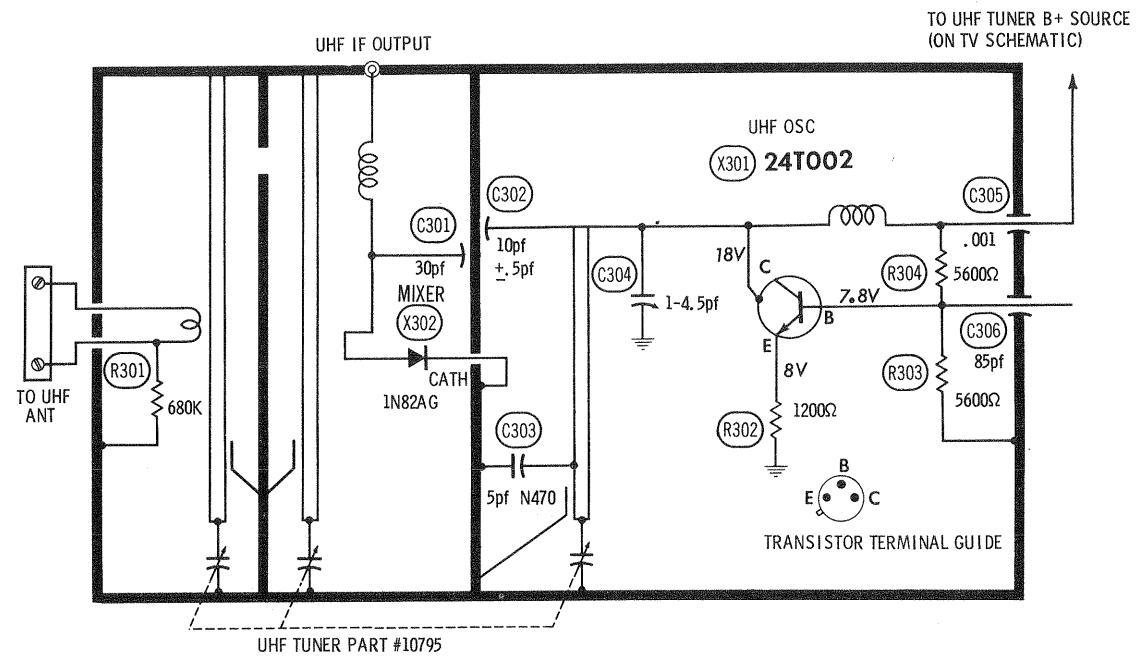
VHF TUNER 10824

PACKARD BELL CHASSIS
88-14K/Q/R/S/T/V/W/WA/X/Y/Z

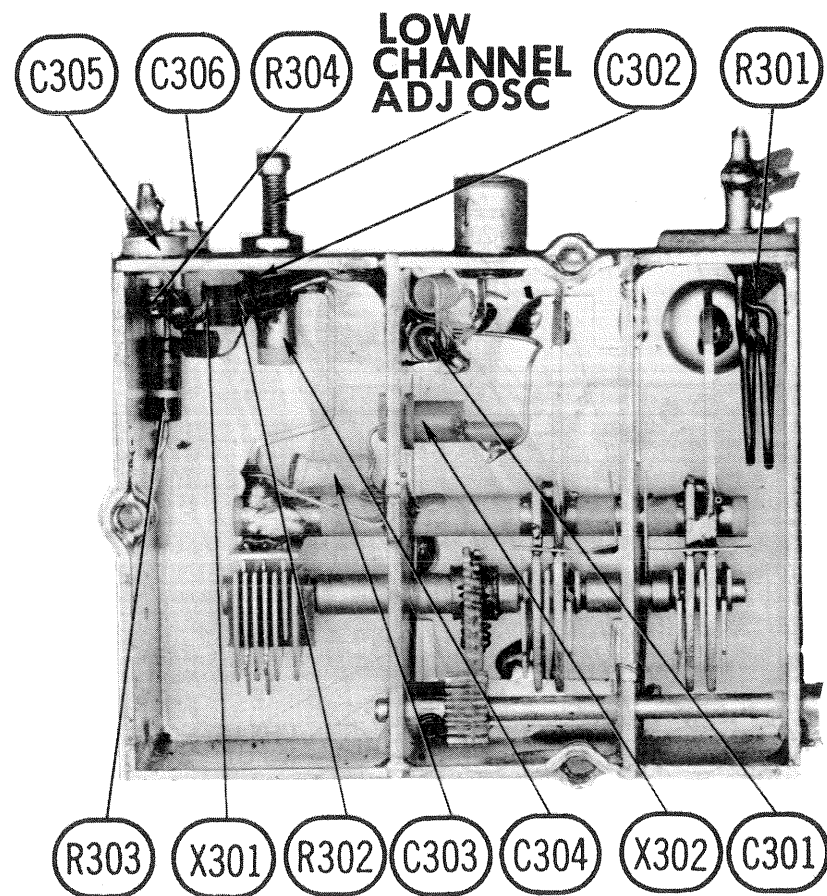


A PHOTOFACT STANDARD NOTATION SCHEMATIC
© Howard W. Sams & Co., Inc. 1966

UHF TUNER # 10768



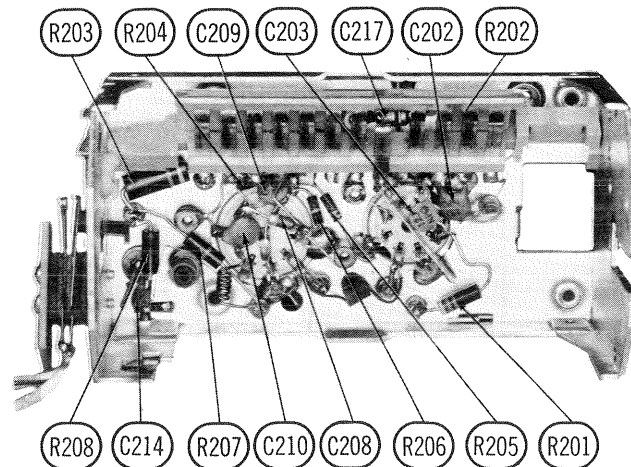
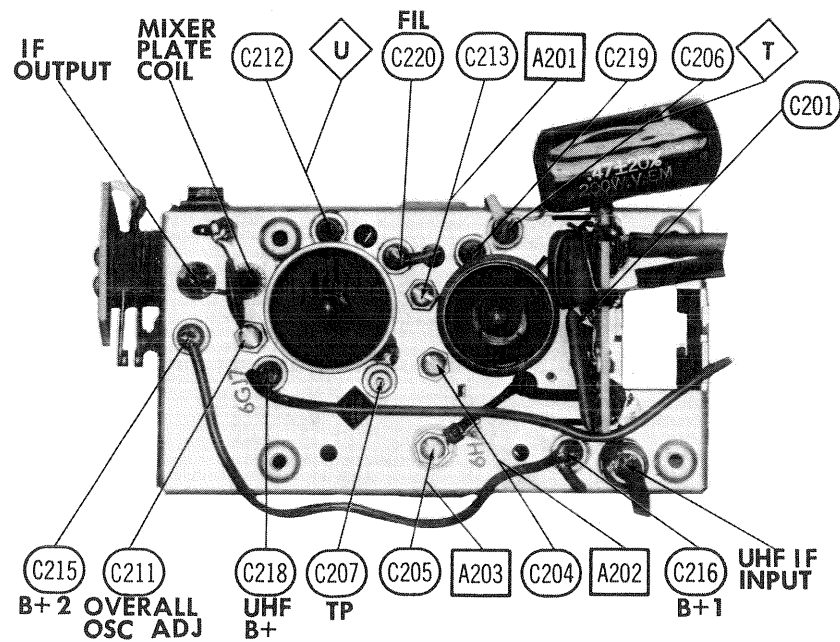
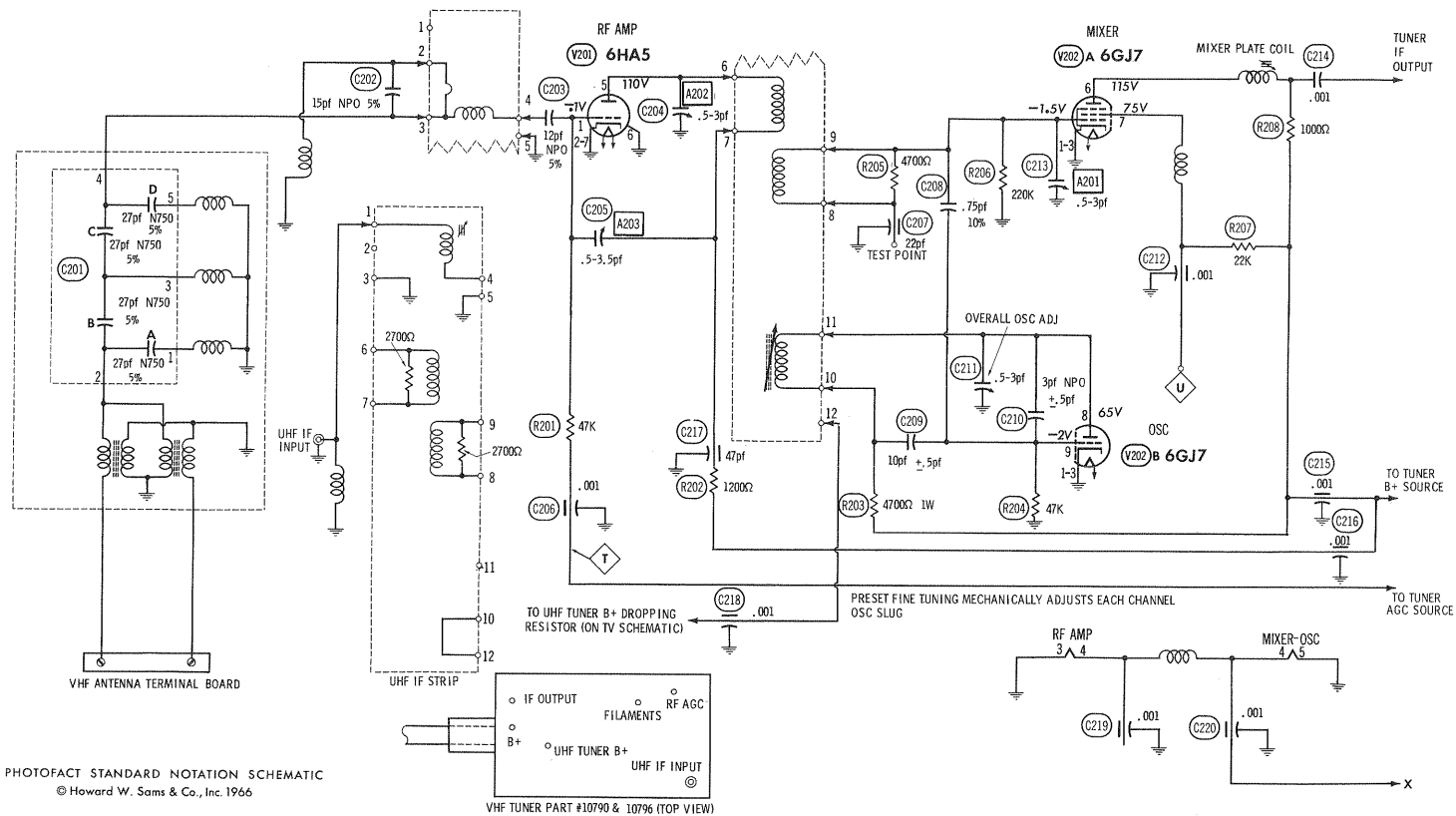
A PHOTOFACT STANDARD NOTATION SCHEMATIC
© Howard W. Sams & Co., Inc. 1966



UHF TUNER 10795

PACKARD BELL CHASSIS
88-14K/Q/R/S/T/V/W/WA/X/Y/Z

FOLDER 3



VHF TUNER ALIGNMENT INSTRUCTIONS

Suggested Alignment Tools: A201, A202, A203, A204 ... GENERAL CEMENT #8868, 8987, 9089 ... WALSCO #2531-X, 2541, 2587

OSCILLATOR ADJUSTMENTS TUNERS 10769, 10784

The individual oscillator slugs are accessible one at a time through a hole in the front of the tuner. Set the Fine Tuning to the center of its range and adjust oscillator for best picture and sound on each active channel.

OSCILLATOR ADJUSTMENTS TUNER 10824

The oscillator for each channel is preset by means of the fine tuning control. Adjust fine tuning for best picture and sound on each channel.

OSCILLATOR ADJUSTMENTS TUNERS 10790B, 10796, 10800, 10820

The oscillator for each channel is preset by means of the fine tuning control. Adjust fine tuning for best picture and sound on each channel. If any channel cannot be properly tuned in with the fine tuning, adjust overall oscillator adjustment and recheck all available channels.

RF AND MIXER ALIGNMENT

Connect the synchronized sweep voltage from the sweep generator to the horizontal input of the oscilloscope for horizontal deflection. Use 10MC sweep unless otherwise noted. Connect a variable bias to the RF AGC line at point (T). Adjust bias to obtain response curve which shows no indication of overloading.

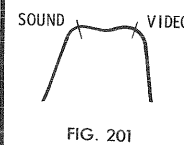
SWEEP GENERATOR COUPLING	SWEEP GENERATOR FREQUENCY	MARKER GENERATOR FREQUENCY	CHANNEL	CONNECT SCOPE	ADJUST	REMARKS
TUNERS 10800, 10820						
1. Across antenna terminals with 120Ω in each lead.	213MC	211.25MC 215.75MC	13	Vert. Input to Point (U), low side to ground	A201, A202, A203	Adjust for maximum gain and symmetry of response similar to Fig. 201 with markers as shown.
2. "	195MC	193.25MC 197.75MC	10	Across Video Det. load resistor.	A204	Increase bias to -15 volts and adjust for MINIMUM amplitude of response.
3. "	See Chart	See Chart	12 thru 2	Vert. Input to Point (U), low side to ground.		Reduce bias. Check response on all channels and make compromise adjustments of A201, A202, and A203 if required.
TUNERS 10790B, 10796						
1. Across antenna terminals with 120Ω in each lead.	213MC	211.25MC 215.75MC	13	Vert. Input to Point (U), low side to ground	A201, A202	Adjust for maximum gain and symmetry of response similar to Fig. 201 with markers as shown.
2. "	195MC	193.25MC 197.75MC	10	Across Video Det. load resistor.	A203	Increase bias to -15 volts and adjust for MINIMUM amplitude of response.
3. "	See Chart	See Chart	12 thru 2	Vert. Input to Point (U), low side to ground.		Reduce bias. Check response on all channels and make compromise adjustments of A201 and A202 if necessary.

Connect the synchronized sweep voltage from the sweep generator to the horizontal input of the oscilloscope for horizontal deflection. Use 10MC sweep unless otherwise noted. Connect a variable bias to the RF AGC line at point (T). Adjust bias to obtain response curve which shows no indication of overloading.

SWEEP GENERATOR COUPLING	SWEEP GENERATOR FREQUENCY	MARKER GENERATOR FREQUENCY	CHANNEL	CONNECT SCOPE	ADJUST	REMARKS
TUNERS 10769, 10784, 10824						
1. Across antenna terminals with 120Ω in each lead.	213MC	211.25MC 215.75MC	13	Vert. Input to Point (U), low side to ground		Expand or compress appropriate coils for maximum gain and symmetry of response similar to Fig. 201 with markers as shown.
2. "	195MC	193.25MC 197.75MC	10	Across Video Det. load resistor.	Gimmick	Increase bias to -15 volts and adjust for MINIMUM amplitude of response.
3. "	See Chart	See Chart	12 thru 2	Vert. Input to Point (U), low side to ground.		Reduce bias. Expand or compress appropriate coils for maximum gain and symmetry of response as shown in Fig. 201.

CHANNEL & FREQUENCY CHART

SWEEP GENERATOR FREQUENCY	MARKER GENERATOR FREQUENCY	CHANNEL	SWEEP GENERATOR FREQUENCY	MARKER GENERATOR FREQUENCY	CHANNEL	SWEEP GENERATOR FREQUENCY	MARKER GENERATOR FREQUENCY	CHANNEL
57MC	55.25MC 59.75MC	2	85MC	83.25MC 87.75MC	6	195MC	193.25MC 197.75MC	10
63MC	61.25MC 65.75MC	3	177MC	175.25MC 179.75MC	7	201MC	198.25MC 203.75MC	11
69MC	67.25MC 71.75MC	4	183MC	181.25MC 185.75MC	8	207MC	205.25MC 209.75MC	12
79MC	77.25MC 81.75MC	5	189MC	187.25MC 191.75MC	9	213MC	211.25MC 215.75MC	13



UHF TUNER ALIGNMENT INSTRUCTIONS

UHF TUNERS 10768, 10795, 10820

Tune UHF Channel Selector to the lowest UHF channel operating in the area (low end of the dial). Adjust UHF Low Channel Oscillator Trimmer for best picture and sound.

VHF TUNERS 10790, 10796

PACKARD BELL CHASSIS
88-14K/Q/R/S/T/V/W/WA/X/Y/Z

FOLDER 3

PARTS LIST AND DESCRIPTION (CONTINUED)

(When ordering parts, state Model, Part Number, and Description.)

Replacement parts shown may be superseded by the availability of newly introduced replacements. Have your local distributor check Sams COUNTER FACTS® for the most up-to-date replacement.

FUSE DEVICES

ITEM No.	TYPE	RATING	REPLACEMENT DATA					
			PART No.		LITTELFUSE PART No.		BUSS PART No.	
			FUSE	HOLDER	FUSE	HOLDER	FUSE	HOLDER
F1	Circuit Breaker	3, 75A	86718C		815004			

MISCELLANEOUS

ITEM No.	PART NAME	Packard Bell Part No.	NOTES
M1	VHF Tuner	10790	JFD REPLACEMENT TA416, Used in Models 19T24/25/26/27/34/35/36/37/40WA/42A/43A. JFD REPLACEMENT TA379, Used in Models 19W1, 19W1C. Used in Models 19T23, 19T33. Used in Models 19T42A, 19T43A. Used in Model 19T40WA. Used in Models 19T23/24/25/26/27/33/34/35/36/37, 19W1C. Used in Model 19W1.
	VHF Tuner	10796	
	VHF Tuner	10769	
	VHF Tuner	10784	
	VHF Tuner	10792	
	VHF Tuner	10800	
	VHF Tuner	10802	
	VHF Tuner	10824	
	UHF Tuner	10795	
	UHF Tuner	10768	
M2	UHF Tuner	10820	
M3	VHF Antenna	10787	JFD REPLACEMENT TA416, Used in Models 19T24/25/26/27/34/35/36/37/40WA/42A/43A. JFD REPLACEMENT TA379, Used in Models 19W1, 19W1C. Used in Models 19T23, 19T33. Used in Models 19T42A, 19T43A. Used in Model 19T40WA. Used in Models 19T23/24/25/26/27/33/34/35/36/37, 19W1C. Used in Model 19W1.
	VHF Antenna	10785	
	VHF Antenna	10747A	
	VHF Antenna	10823-1	
	UHF Antenna	10823-2	
	UHF Antenna	10782	
	UHF Antenna	10752	
	Tuning Motor	58100	
	Computer Lights	86105A	
	Program Motor Hold		
M4	UHF Antenna	10823-1	JFD REPLACEMENT TA416, Used in Models 19T24/25/26/27/34/35/36/37/40WA/42A/43A. JFD REPLACEMENT TA379, Used in Models 19W1, 19W1C. Used in Models 19T23, 19T33. Used in Models 19T42A, 19T43A. Used in Model 19T40WA. Used in Models 19T23/24/25/26/27/33/34/35/36/37, 19W1C. Used in Model 19W1.
	UHF Antenna	10823-2	
	UHF Antenna	10782	
	UHF Antenna	10752	
	Tuning Motor	58100	
	Computer Lights	86105A	
	Program Motor Hold		
	UHF Antenna	10823-1	
	UHF Antenna	10823-2	
	UHF Antenna	10782	
M5	UHF Antenna	10752	JFD REPLACEMENT TA416, Used in Models 19T24/25/26/27/34/35/36/37/40WA/42A/43A. JFD REPLACEMENT TA379, Used in Models 19W1, 19W1C. Used in Models 19T23, 19T33. Used in Models 19T42A, 19T43A. Used in Model 19T40WA. Used in Models 19T23/24/25/26/27/33/34/35/36/37, 19W1C. Used in Model 19W1.
	Tuning Motor	58100	
	Computer Lights	86105A	
	Program Motor Hold		
	UHF Antenna	10823-1	
	UHF Antenna	10823-2	
	UHF Antenna	10782	
	UHF Antenna	10752	
	Tuning Motor	58100	
	Computer Lights	86105A	
S1	Computer Lights	86105A	JFD REPLACEMENT TA416, Used in Models 19T24/25/26/27/34/35/36/37/40WA/42A/43A. JFD REPLACEMENT TA379, Used in Models 19W1, 19W1C. Used in Models 19T23, 19T33. Used in Models 19T42A, 19T43A. Used in Model 19T40WA. Used in Models 19T23/24/25/26/27/33/34/35/36/37, 19W1C. Used in Model 19W1.
	Program Motor Hold		
	UHF Antenna	10823-1	
	UHF Antenna	10823-2	
	UHF Antenna	10782	
	UHF Antenna	10752	
	Tuning Motor	58100	
	Computer Lights	86105A	
	Program Motor Hold		
	UHF Antenna	10823-1	
S2	Program Motor Hold		JFD REPLACEMENT TA416, Used in Models 19T24/25/26/27/34/35/36/37/40WA/42A/43A. JFD REPLACEMENT TA379, Used in Models 19W1, 19W1C. Used in Models 19T23, 19T33. Used in Models 19T42A, 19T43A. Used in Model 19T40WA. Used in Models 19T23/24/25/26/27/33/34/35/36/37, 19W1C. Used in Model 19W1.
	UHF Antenna	10823-1	
	UHF Antenna	10823-2	
	UHF Antenna	10782	
	UHF Antenna	10752	
	Tuning Motor	58100	
	Computer Lights	86105A	
	Program Motor Hold		
	UHF Antenna	10823-1	
	UHF Antenna	10823-2	
S3	UHF Antenna	10752	JFD REPLACEMENT TA416, Used in Models 19T24/25/26/27/34/35/36/37/40WA/42A/43A. JFD REPLACEMENT TA379, Used in Models 19W1, 19W1C. Used in Models 19T23, 19T33. Used in Models 19T42A, 19T43A. Used in Model 19T40WA. Used in Models 19T23/24/25/26/27/33/34/35/36/37, 19W1C. Used in Model 19W1.
	Tuning Motor	58100	
	Computer Lights	86105A	
	Program Motor Hold		
	UHF Antenna	10823-1	
	UHF Antenna	10823-2	
	UHF Antenna	10782	
	UHF Antenna	10752	
	Tuning Motor	58100	
	Computer Lights	86105A	

CABINETS & CABINET PARTS

(When Ordering Specify Model, Chassis & Color)

PACKARD BELL ITEM	PART No.	MODEL	19723	19724	19725	19726	19727	19733	19734	19735	19736	19737	19740WA	19742A	19743A	19W1	19W1C
			19723	19724	19725	19726	19727	19733	19734	19735	19736	19737	19740WA	19742A	19743A	19W1	19W1C
Knob-VHF Channel Selector	52467A													X	X		
Knob "	52434B		X					X		X	X	X				X	X
Knob "	52467			X	X	X	X		X	X	X	X					
Knob-Fine Tuning	52475A			X	X	X	X		X	X	X	X		X	X		
Knob "	52388															X	X
Knob "	52484A		X					X									
Knob-UHF Tuning	52482								X	X	X	X		X	X		
Knob "	52490							X									
Knob-Volume	52479			X	X	X	X		X	X	X	X		X	X		
Knob "	52435A															X	X
Knob "	52488		X					X									
Knob-Brightness	52469			X	X	X	X		X	X	X	X		X	X		
Knob "	52432A															X	X
Knob "	52486		X					X									
Knob-Vert. Hold	52477			X	X	X	X		X	X	X	X		X	X		
Knob "	52433A															X	X
Knob "	52487		X					X									
Cabinet Front (Specify Finish)	21225-(J)													X			
Cabinet Front "	21223-(K)														X		
Cabinet Back "	21224-(L)													X	X		
Handle	49040-6D		X					X									
Handle	49054-5B			X					X								
Handle	49054-1B				X	X	X			X	X	X					

VHF TUNER PARTS LIST

VHF TUNER 10790, 10796

TUBES

ITEM No.	USE	TYPE	ITEM No.	USE	TYPE
V201	RF Amp.	6HA5	V202	Mixer - Osc.	6GJ7

CAPACITORS

ITEM No.	RATING	REMARKS	REPLACEMENT DATA					
			AEROVOX PART No.	CENTRALAB PART No.	CORNELL-DUBILIER PART No.	ELMENCO PART No.	MALLORY PART No.	SPRAGUE PART No.
C201A	27 N750 5%			TCN-27			CN7427	10TCU-Q27
B	27 N750 5%			TCN-27			CN7427	10TCU-Q27
C	27 N750 5%			TCN-27			CN7427	10TCU-Q27
D	27 N750 5%			TCN-27			CN7427	10TCU-Q27
C202	15 NPO 5%			DTZ-15	CZ801CG150J	CCTO-150	CN0415	10TCC-Q15
C203	12 NPO 5%			TCZ-12	CZ801CG120J	CCTO-120	CN0412	10TCC-Q12
C204	.5-3			829-3		CV-1	CT565	
C205	.5-3, 5							
C206	.001			MFT-1000			CT280A	
C207	22							
C208	.75pf 10%			TCZ-4R8				
C209	10 ±.5			DTZ-10	CZ801CG100K	CCTO-150	CN0410	10TCC-Q10
C210	3 NPO ±.5					CCTO-3R3	CN0633	10TCC-V30
C211	.5-3			829-3		CV-1	CT565	
C212	.001			MFT-1000		CCF-102	CT280A	
C213	.5-3			829-3		CV-1	CT565	
C214	.001			BPD-001	HVX162XP102M	CCD-102	B210	5HK-D10
C215	.001			EF-001		CCF-102	CT280A	
C216	.001			EF-001		CCF-102	CT280A	
C217	.47							
C218	.001			EF-001		CCF-102	CT280A	
C219	.001			EF-001		CCF-102	CT280A	
C220	.001			EF-001		CCF-102	CT280A	

UHF TUNER PARTS LIST

TRANSISTORS

ITEM No.	ORIG. TYPE	USE	REPLACEMENT DATA			NOTES
			DELCO PART No.	GENERAL ELECTRIC PART No.	RCA PART No.	
X301	24T002	UHF Oscillator		GE-11	SK-3019	NPN

POWER RECTIFIERS & SIGNAL DIODES

ITEM No.	MEASURED CURRENT	ORIGINAL Part or Type No.	RECTIFIERS & DIODES		RECTIFIERS		
			GENERAL ELECTRIC PART No.	INTERNATIONAL RECTIFIER PART No.	MALLORY PART No.	RCA PART No.	SARKES TARZIAN PART No.
X302		1N82AG					

CAPACITORS

ITEM No.	RATING	REMARKS	REPLACEMENT DATA					
			AEROVOX PART No.	CENTRALAB PART No.	CORNELL-DUBILIER PART No.	ELMENCO PART No.	MALLORY PART No.	SPRAGUE PART No.
C301	30							
C302	10 ±.5			DTZ-10	CZ801CG100K	CCTO-100	CN0410	10TCC-T10
C303	5 N470							10TCT-V50
C304	1-4, 5			829-6		CV-3	CT552	
C305	.001			MFT-1000		CCF-102	CT280A	
C306	85							

* Not normally in distributor's stock. Available thru distributor on order to manufacturer.

PARTS LIST AND DESCRIPTION

(When ordering parts, state Model, Part Number, and Description.)

Replacement parts shown may be superseded by the availability of newly introduced replacements. Have your local distributor check Sams COUNTER FACTS® for the most up-to-date replacement.

TUBES

ITEM No.	USE	TYPE	ITEM No.	USE	TYPE
X301	UHF Osc. (Transistor)	24T002	V6	Ratio Det. - AF Amp.	6BN8
V201	RF Amp.	6HA5	V7	Audio Output	6AQ5A
V202	Mixer - Osc.	6GJ7	V8	Vert. Mult. - Vert. Output	6EW7
V1	1st Video IF	6BZ6	V9	Horiz. Mult.	6FQ7 (6CG7) *
V2	2nd Video IF	6BZ6	V10	Horiz. Output	6GW8 (6DQ6B) *
V3	3rd Video IF - Noise Canceller Amp.	6EA8	V11	Damper	6AY3
V4	Video Output - AGC Keying	6AW8A	V12	HV Rectifier	1G3GT/1B3GT
V5	Sound IF - Sync Separator	6EA8	V13	LV Rectifier	5U4GB

* Alternate

PICTURE TUBE

ITEM No.	REPLACEMENT DATA				NOTES
	Packard Bell PART No.	GENERAL ELECTRIC PART No.	RCA PART No.	SYLVANIA PART No.	
V14	19DQP4 19AYP4 19CZP4	19AYP4 ①	19DQP4 ① 19AYP4 ①	19DWP4 ② 19AYP4 ② 19CZP4 ②	①Aluminized ②Silver Screen "85"

POWER RECTIFIERS & SIGNAL DIODES

ITEM No.	MEASURED CURRENT	ORIGINAL Part or Type No.	RECTIFIERS & DIODES		RECTIFIERS		
			GENERAL ELECTRIC PART No.	INTERNATIONAL RECTIFIER PART No.	MALLORY PART No.	RCA PART No.	SARKES TARZIAN PART No.
X1		1N295A	1N60	1N60			
X2		72053	6GC1	DD04			

ELECTROLYTIC CAPACITORS

ITEM No.	RATING		REPLACEMENT DATA					
	CAP.	VOLT.	Packard Bell Part No.	AEROVOX Part No.	CORNELL-DUBILIER Part No.	GENERAL ELECTRIC Part No.	MALLORY Part No.	SPRAGUE Part No.
C1A	50	350	24237	AFH54-56-05		XC4-76	FP420, 47	TVL-4628, 3
B	50	350						
C	10	350						
D	100	25						
C2A	100	350	24204	AFH4-53-90	D0473.3 & BR10-450	XC4-25	FP420, 7	TVLS-4607, 5 *
B	20	350						
C	5	50						
D	25	25						

PARTS LIST AND DESCRIPTION (CONTINUED)

(When ordering parts, state Model, Part Number, and Description.)

Replacement parts shown may be superseded by the availability of newly introduced replacements. Have your local distributor check Sams COUNTER FACTS® for the most up-to-date replacement.

CAPACITORS

ITEM No.	RATING	REMARKS	REPLACEMENT DATA						
			AEROVOX PART No.	CENTRALAB PART No.	CORNELL-DUBILIER PART No.	ELMENCO PART No.	MALLORY PART No.	SPRAGUE PART No.	
C37	.1 200V		P288N-1	DF-104	PM2P1	2DP-3-104	PVC201	2TM-P10	
C38	.1 200V		P288N-1	DF-104	PM2P1	2DP-3-104	PVC201	2TM-P10	
C39	.01 600V		P688N-01		WMF6S1	6DP-2-103	PVC611	6PS-S10	
C40	.001 600V 10%		P688N-001		WMF6D1	6DP-1-102	PVC621	6PS-D10	
C41	.0047 600V		P688N-0047		WMF6D47	6DP-1-472	PVC6247	6PS-D47	
C42	.033 1KV 10%		P688N-033		WMF6S33	6DP-3-333	PVC6133	6PS-S33	
C43	.82 2KV 10%					*	2DY482	30TCU-Q75	
C44	.15 200V		P288N-15		WMF2P15	2DP-3-154	PVC2015	2PS-P15	
C45	.68 NPO 5%		NPO-DI 68	DTZ-68	CK801CC680K	CCTO-680	CNO468	10TCC-Q68	
C46	.0039		ADM20-392	CPR-0039J	CD19F392K500	DM-19-392	SKX39	MS-239	
C47	.470	5%	ADM15-470	CPR-470	CD19E471J500	DM-15-471	SKX37	MS-347	
C48	.470	5%	ADM15-471	CPR-470	CD19E471J500	DM-15-471	SKX37	MS-347	
C49	.91 NPO 5%		NPO-DI 100	TCZ-91	CV801CCG101K	CCTO-101	CNO310	10TCC-T10	
C50	.01 600V		P688N-01		WMF6S1	6DP-2-103	PVC611	6PS-S10	
C51	.1 600V		P688N-1	DF-104	PM6P1	6DP-4-104	GEM601	6TM-P10	
C52	100		NPO-DI 100	DTZ-100	CV801CCG101K	CCTO-101	CNO310	10TCC-T10	
C53	.01 1KV		BPD-01	DD-103	BYV102ZU103M	CCD-103	B110	5HK-S10	
C54	.1 600V		P688N-1	DF-104	PM6P1	6DP-4-104	GEM601	6TM-P10	
C55	.01		BPD-02	DD-203	BYT601ZU203Z	CCD-203	B120	5HK-S20	
C56	120 5KV N1500 10%					*	6HV312	60GA-T12	
C57	.1 400V		P488N-1	DF-104	PM4P1	4DP-3-104	GEM401	4TM-P10	

* Not normally in distributor's stock. Available thru distributor on order to manufacturer.

CONTROLS

All wattages 1/2 watt, or less, unless otherwise listed.

ITEM No.	USE	RESIST-ANCE	REPLACEMENT DATA					
			Packard Bell PART No.	CENTRALAB PART No.	CLAROSTAT PART No.	CTS-IRC PART No.	MALLORY PART No.	
R1	Volume/Switch	500K	25134 ①	F2-500K, SPU3 04, KR-8	C47S-500K-Z, FS-3 or (NP-500K-Z, UPP-B-400, PPAP, NWG-18)	B13-133, SK7 or (PPQ13-133, SK7) or (BU2, CF25, SS10, K) *	PP55A or (RUP55A, SL35, SL250)	
	Volume/Switch	500K	25118 ②	F2-500K, SPU304, KR-8	C47S-500K-Z, FS-3 or (NP-500K-Z, UPP-B-400, PPAP, NWG-18)	B13-133, SK7 or (PPQ13-133, SK7) or (BU2, CF25, SS10, K) *	PP55A or (RUP55A, SL35, SL250)	
	Volume/Switch	500K	25647B ③	F2-500K, SPU304, KR-8	C47S-500K-Z, KSS-3 or (NP-500K-Z, UPP-C-400, PPAP, NWG-18)	B13-133, SK7 or (PPQ13-133, SK7) or (BU2, CF25, SS10, K) *	PP55A or (RUP55A, SL35, SL250)	
R2A	Vert. Hold Brightness	3meg 50K	25129 ④	F1-3meg, R1-50K, FFS015, RFS105	NP-3meg-S, NR-50K-S, UPC-B-015, UR-D-105	† QJ-2174		
	Vert. Hold Brightness	3meg 50K	25648A ⑤	F1-3meg, R1-50K, FFS014, RFS107	NP-3meg-S, NR-50K-S, UPC-B-014, UR-D-107	▲ QJ-1632	■ UE4223	
R3	Contrast	25K, 20K Tap	25626	F51-30K, SNK012		B20-121X, SK6 or (BU1, CF49T, SS6) *	UA34T253, SN1000 or (RU34T24, SL38, SN1000) or (UT415)	
R4	AGC	1meg	25617	TT-69 or (F1-1meg, SNK010)	B47-1meg-S or (NP-1meg-S, UP-C-400, TT-2)	B11-137, TM4 or (BU11, CF17, SS6) *	TA16L or (RU16L, SL37, SN1000) or (UA16L, SN1000)	
R5	Vert. Linearity	3meg	25867	TT-84 or (F1-3meg, SNK010)	B47-3meg-S or (NP-3meg-S, UP-C-400, TT-2)	B11-140, TM4 or (BU11, CF21, SS6) *	TA36L or (RU36L, SL37, SN1000) or (UA36L, SN1000)	
R6	Height	5meg	25910	TT-87 or (F1-5meg, SNK010)	B47-5meg-S or (NP-5meg-S, UP-C-400, TT-2)	HLC5	PTA56L or (RU56L, SL37, SN1000) or (UA56L, SN1000)	
R7	Focus	5meg	25910	TT-87 or (F1-5meg, SNK010)	B47-5meg-S or (NP-5meg-S, UP-C-400, TT-2)	HLC5	PTA56L or (RU56L, SL37, SN1000) or (UA56L, SN1000)	
R8	Horiz. Drive	35K	25136	TT-31 or (F1-50K, SNK010)	B47-50K-S or (NP-50K-S, UP-C-400, TT-2)	B11-122, TM4 or (BU11, CF12, SS6) *	PTA54L or (RU54L, SL37, SN1000) or (UA54L, SN1000)	

† "CONCENTRIKIT" Equivalent: K-6 Kit with Base Elements and Shafts: B11-140, P21-029 (Panel), "SNAPTROL" Equivalent: BU5, CF21, CR7, SF5, SR4, DC1, B11-123, R16-106 (Rear).

▲ "CONCENTRIKIT" Equivalent: K-6 Kit with Base Elements and Shafts: B11-140, P21-029 (Panel), "SNAPTROL" Equivalent: BU5, CF21, CR7, SF4, SR41, DC1, B11-123, R9-110 (Rear).

■ "SNAPTROL" Equivalent: FA36L, RU54L, OS875A, ISI375.

① "STA-LOC" Equivalent: FA36L, RU54L, OS875A, ISI375.

② Part #25130A (Volume) used in Chassis 88-14T and 88-14Z.

③ Used in Chassis 88-14WA.

④ Used in Chassis 88-14K, 88-14Q, 88-14V and 88-14W.

⑤ Used in Chassis 88-14K, 88-14Q, 88-14V and 88-14W.

* "SNAPTROL"

RESISTORS (Power and Special)

ITEM No.	RATING	REPLACEMENT DATA			ITEM No.	RATING	REPLACEMENT DATA		
		IRC PART No.	WORKMAN PART No.	Packard Bell PART No.			IRC PART No.	WORKMAN PART No.	Packard Bell PART No.
R9	3900Ω TW	PW10-3900	10W-SQ-3900		R56	Thermistor 3.9Ω Cold		FR-3.8	
R24	6800Ω TW	PW10-7000	10W-SQ-6800	73729	R64	10K TW	PW10-10K	10W-SQ-10K	73744
R53	470Ω 5W	PW5-500	10W-SQ-470	73783	R67	6800Ω TW	PW10-7000	10W-SQ-6800	73729

COMPONENT COMBINATIONS

ITEM No.	USE	DESCRIPTION	Packard Bell PART No.	REPLACEMENT DATA
PC1	AGC Network	56K, 270K, 1meg, 1.5meg, 8.2meg	24537D	
PC2	Video IF Voltage Divider Network	470Ω, 470Ω, 6800Ω, 120K, 120K, .001, .001	24536B	
PC3	Video IF Cathode Filter	120Ω, .005	24541B	Aerovox PA-740 Centralab PC-383
PC4	Stabilizer Network	2200Ω, 56pf	24542B	
PC5	De-emphasis Network	22K, 39K, .0012, .002, .01	24540C	
PC6	Audio Network	220K, 470K, .022	24539B ①	Aerovox PA-112-4 Centralab PC-81 Sprague T-2
PC7	Sync Network	22K, 82K, 470K, 4.7meg, 470pf, .0033	24538E	① Add a .01 mfd capacitor in parallel with leads 2 and 3.
PC8	Horiz. Oscillator Network	3300Ω, 47K, 470K, 1meg, 1meg, 68pf, 68pf, .001, .001, .001	24576	

TRANSFORMER (POWER)

ITEM No.	RATING			REPLACEMENT DATA					NOTES
	PRI.	SEC. 1	SEC. 2	Packard Bell PART No.	MERIT PART No.	STANCOR PART No.	THORDARSON PART No.	TRIAD PART No.	
T1	117VAC @ 1.9A AC	560VCT @ .32A DC	6.3VAC @ 7AAC Tap @ 5VAC @ .125A AC	89112 (89098A) †					† Alternate, used in Chassis 88-14K, Q, V & W.

* TRANSFORMERS (SWEEP CIRCUITS)

ITEM No.	USE	REPLACEMENT DATA					NOTES
		Packard Bell PART No.	MERIT PART No.	STANCOR PART No.	THORDARSON PART No.	TRIAD PART No.	
T2	Vert. Output	89543(A)	A-2988 ①	VO-115 ①	26S07 ①	A-140X ①	① Drill new mounting hole(s).
T3	Yoke (Horiz. 18, 6mh) 114° (Vert. 15, 6mh)	29797	MDF-118 & M47-110 ②	DY-27A ②	Y-93	Y-60-1 ②③	② Use original vertical damping network if necessary.
T4	Yoke Cover Horiz. Output	34103 89553					③ Remove 27pf cap. and jumper between yoke terminals #5 and #8.

* COMPONENT CONNECTION DATA

ORIGINAL →	HV TRANSFORMER			VERTICAL OUTPUT			YOKE			YOKE PLUG		
REPLACEMENT ↓	Original Connections			Original Connections			Original Connections			TO YOKE TERMINAL		
				Blue Red/Green	Yellow		1 2 3 4 5 6 7 8					
MERIT				Green	Red Yellow		1 2 3 4 5 6 10 8			▲	4 6 10 3 2	
STANCOR				Green	Red Yellow		1 2 3 4 5 6 7 8			▲	4 6 7 3 2	
THORDARSON				Green	Red Yellow		EXACT REPLACEMENT					
TRIAD				Blue	Red Yellow		1 2 3 4 5 6 7 8			▲	4 6 7 3 2	

▲ Jumper yoke plug pins #2 and #3.

COILS (SWEEP CIRCUITS)

ITEM No.	USE	REPLACEMENT DATA						
		Packard Bell PART No.	MERIT PART No.	MILLER PART No.	STANCOR PART No.	THORDARSON MEISSNER PART No.	TRIAD PART No.	WORKMAN PART No.
L18	Horiz. Stab. (Hold)	29703(A) †	TV-163 ①	6210 ①	RTC-8622 ①	HS-5 ①	WLC-25 ①	T103 ①
L19	Width	29699A †	TV-163 ①	6210 ①	RTC-8622 ①	HS-5 ①	WLC-25 ①	T103 ①
		29718(C)	MWC-11	6314	WC-11 ②	WC-18	WLC-6	T108

† Used in Chassis 88-14Q, V, R, S, T, X, Y, Z.

† Used in Chassis 88-14K, W.

① Install plastic sleeve on adjustment screw.

② Disregard Tap.

FILTER CHOKE

ITEM No.	RATINGS			REPLACEMENT DATA				NOTES
	CURRENT (Measured)	DC RES.	INDUCTANCE (0 CURRENT 1000-)	Packard Bell PART No.	MERIT PART No.	STANCOR PART No.	THORDARSON PART No.	
L20	.260ADC	23Ω	.45 H	27016 ▲ 27006E ■	C-4115 ①	C-2343 ①	26C80	C-36X

① Drill new mounting hole(s).

▲ Used in Chassis 88-14K, R, S, T, W, X

■ Used in Chassis 88-14Q & V.

SPEAKER

ITEM No.	TYPE	REPLACEMENT DATA		NOTES
		Packard Bell PART No.	QUAM PART No.	
SP1	3" x 5" PM	83147	35A05Z8	Used in Models 19T26/27/36/37/42A/43A.
SP2	3" x 5" PM	83147	35A05Z8	" " " " " "
	3½" PM	83127F	3A05	Used in Model 19T40WA.
	2" PM	83114	25A07	Used in Models 19W1/1C.
	4" PM	83019B	4A1	" " " " " "
	3½" PM	83127E		Used in Model 19T23.
	3" x 5" PM	83145		Used in Models 19T24/25/34/35.

PARTS LIST AND DESCRIPTION

(When ordering parts, state Model, Part Number, and Description.)

Replacement parts shown may be superseded by the availability of newly introduced replacements. Have your local distributor check Sams COUNTER FACTS® for the most up-to-date replacement.

TUBES

♦ AMPEREX ♦			♦ GENERAL ELECTRIC ♦			♦ RCA ♦			♦ SYLVANIA ♦		
ITEM No.	USE		TYPE			ITEM No.	USE		TYPE		
V1	1st Amp. - 2nd Amp.		12AX7A			V4	Volume Relay Control		35EH5		
V2	3rd Amp. - 4th Amp.		12AX7A			V5	Rectifier		35W4		
V3	Driver - Channel Selector Relay Control		12AU7A								

POWER RECTIFIERS & SIGNAL DIODES

ITEM No.	MEASURED CURRENT	ORIGINAL Part or Type No.	RECTIFIERS & DIODES		RECTIFIERS		
			GENERAL ELECTRIC PART No.	INTERNATIONAL RECTIFIER PART No.	MALLORY PART No.	RCA PART No.	SARKES TARZIAN PART No.
X1	.0002A	72117	1N34AS	1N34A			
X2		72117	1N34AS	1N34A			
X3		72117	1N34AS	1N34A			

ELECTROLYTIC CAPACITORS

ITEM No.	RATING		REPLACEMENT DATA					
	CAP.	VOLT.	Packard Bell PART No.	AEROVOX PART No.	CORNELL-DUBILIER PART No.	GENERAL ELECTRIC PART No.	MALLORY PART No.	SPRAGUE PART No.
C1A	40	200	24238	AFH2-32-50 ①	CC0225 ①②	XC2-10 ①	FP230.3 ①	TVL-2617 ①
B	10	200						
C2	25	25	24167	CRE612A	NLW25-25	MT1-14	TT25X25	TL-1207

① Use insulating sleeve and mounting wafer.

② Parallel Section.

CAPACITORS

ITEM No.	RATING		REMARKS	REPLACEMENT DATA					
				AEROVOX PART No.	CENTRALAB PART No.	CORNELL-DUBILIER PART No.	ELMENCO PART No.	MALLORY PART No.	SPRAGUE PART No.
C3	330		#238-11	DI-330	DD-331	JBZ601YP331K	CCD-331	JF333	10TS-T33
C4	120	N1500					*	2HV312	
C5	120	N1500					*	2HV312	
C6	120	N1500					*	2HV312	
C7	120	N1500	#238-11				*	2HV312	
C8	.47µf	200V	#238-11	P288N-47		WMF2P47	2DP-5-174	PVC2047	2PS-P47
C9	680	5%			CPR-680J	CD19F681J500	DM-15-681	SX368	MS-368
C10	.1	200V		P288N-1	DF-104	PM2P1	2DP-3-104	PVC201	2TM-P10
C11	.01			BPD-01	DD-103	BYV102ZU103M	CCD-103	B110	5HK-S10
C12	.1	200V		P288N-1	DF-104	PM2P1	2DP-3-104	PVC201	2TM-P10
C13	.033	600V		P688N-033		WMF6S33	6DP-3-333	PVC6133	6PS-S33
C14	680				CPR-680J	CD19F681K500	DM-15-681		
C15	.01			BPD-01	DD-103	BYV102ZU013M	CCD-103	B110	5HK-S10
C16	.047	400V		P488N-047	DD-503	PM4S47	4DP-3-473	GEM4147	4TM-S47
C17	.1	400V		P488N-1	DF-104	PM4P1	4DP-3-104	GEM401	4TM-P10

Packard Bell Part Number

CONTROLS

All wattages 1/2 watt, or less, unless otherwise listed.

ITEM No.	USE	RESISTANCE	REPLACEMENT DATA				
			Packard Bell PART No.	CENTRALAB PART No.	CLAROSTAT PART No.	CTS-IRC PART No.	MALLORY PART No.
R1	Sensitivity	50K	25908	TT-31 or (F1-50K, SNK010)	B47-50K-S or (NP-50K-S, UP-C-400, TT-2)	B11-123, TM4 or (BU11, CF12, SS6) *	PTA54L or (RU54L, SL37, SN1000) or (UA54L, SN1000)

* "SNAPTROL"

RESISTORS (Power and Special)

ITEM No.	RATING	REPLACEMENT DATA			ITEM No.	RATING	REPLACEMENT DATA		
		IRC PART No.	WORKMAN PART No.	Packard Bell PART No.			IRC PART No.	WORKMAN PART No.	Packard Bell PART No.
R26	100Ω 5W	PW5-100	5W-SQ-100	73791					

COILS (RF-IF)

ITEM No.	USE	REPLACEMENT DATA				
		Packard Bell PART No.	MEISSNER PART No.	MERIT PART No.	MILLER PART No.	STANCOR PART No.
L1	38.75KC Output	29763 (29812)				
L2	41.25KC Output	29762 (29813)				

MISCELLANEOUS

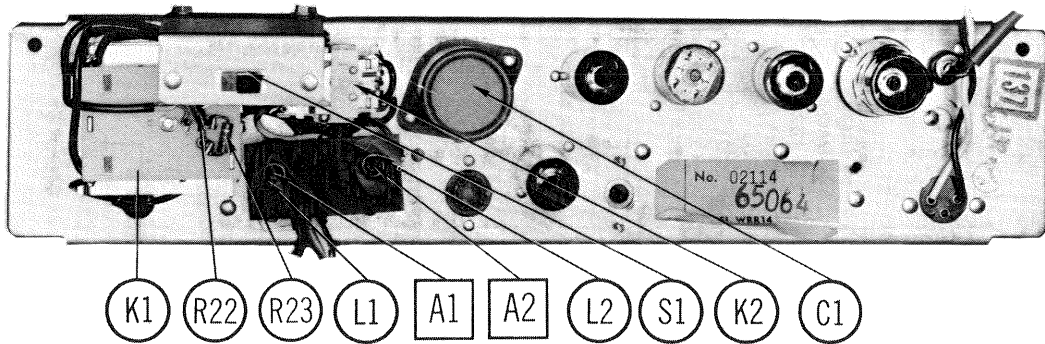
ITEM No.	PART NAME	Packard Bell PART No.	NOTES
K1	Relay	72099	Volume and On-Off Channel Selector
K2	Relay	72098	
M1	Transducer	57022	
SW1	Switch (DPDT)	86827	Remote-Manual

PHOTOFACT® Folder



IMPORTANT FILING NOTICE

This PHOTOFACT Folder covers equipment used with the TV chassis covered in PHOTOFACT SET 811 FOLDER 3 . File this Folder with the TV Folder in the yellow filing jacket provided.



TRADE NAME	Packard Bell
SUPPLIER	For current address, see Annual Index.
TYPE SET	Remote Control Receiver WRR-14 and Remote Control Transmitter WRT-9
TUBES	Five
POWER SUPPLY	110-120 Volts AC, 60 Cycles
RATING	19 Watts, .155 Amp. @ 117 Volts AC

ALIGNMENT INSTRUCTIONS

The Remote Control Transmitter is used to provide the signal to align the Remote Receiver.

	SIGNAL GENERATOR COUPLING	SIGNAL GENERATOR FREQUENCY	CHANNEL	CONNECT VTVM	ADJUST	REMARKS
1.	Rapidly rotate volume rotor while performing this step.			DC probe of VTVM to point A, common to point B.	A1	Adjust for maximum.
2.	Rapidly rotate channel rotor while performing this step.			DC probe of VTVM to point C, common to point D.	A2	Remove four-prong motor plug from remote chassis. During this step, adjust for maximum.

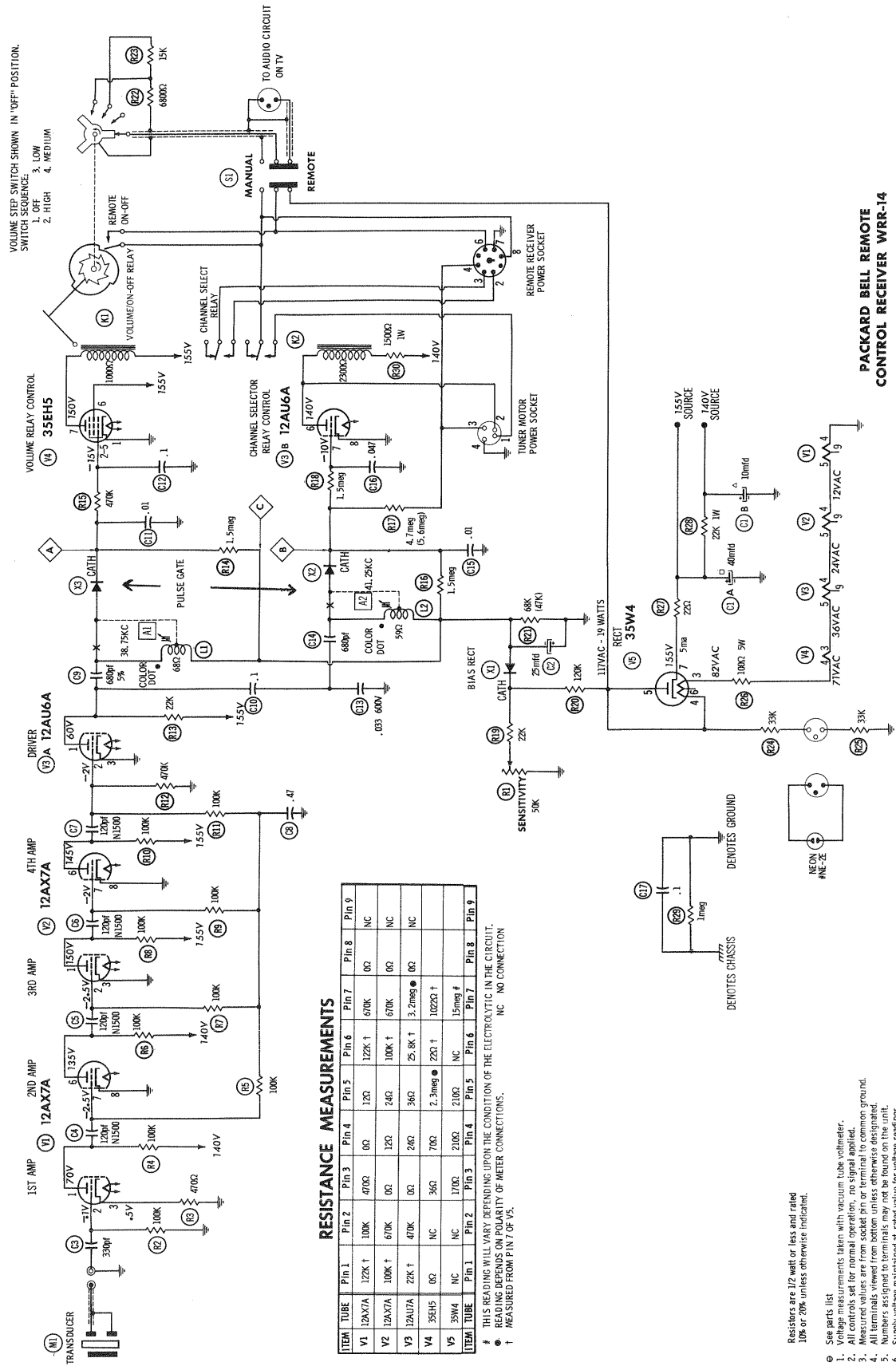
HOWARD W. SAMS & CO., INC. Indianapolis, Indiana 46206



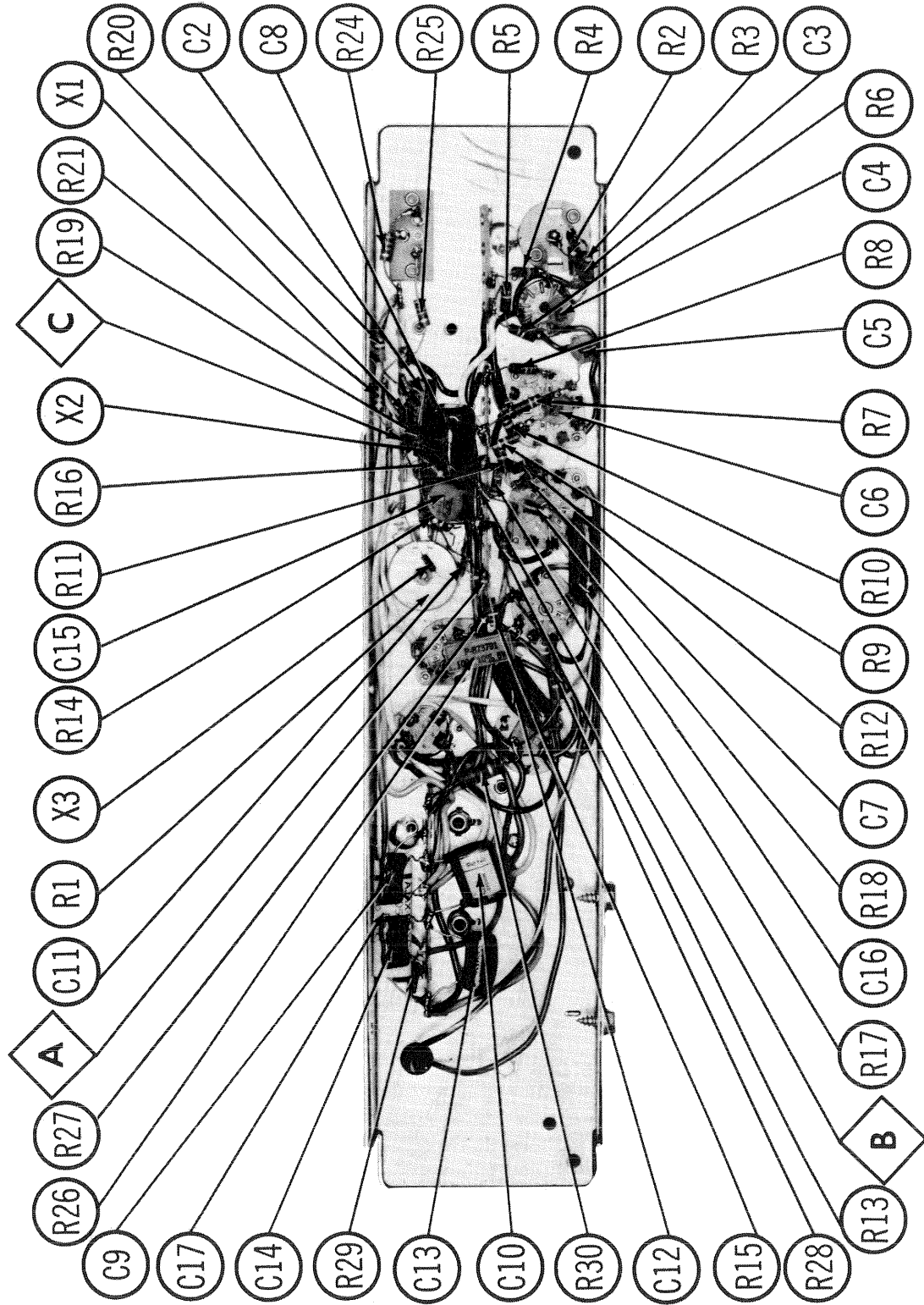
The listing of any available replacement part herein does not constitute in any case a recommendation, warranty or guaranty by Howard W. Sams & Co., Inc., as to the quality and suitability of such replacement part. The numbers of these parts have been compiled from information furnished to Howard W. Sams & Co., Inc., by the manufacturers of the particular type of replacement part listed. NA639

Reproduction or use, without express permission, of editorial or pictorial content, in any manner, is prohibited. No patent liability is assumed with respect to the use of the information contained herein. © 1966 Howard W. Sams & Co., Inc., Indianapolis, Indiana 46206. Printed in U. S. of America

DATE 4 -66 SET 811 FOLDER 3-A



PACKARD BELL REMOTE
CONTROL RECEIVER WRR-14



PACKARD BELL REMOTE
CONTROL RECEIVER WRR-14