

■ ALIGNMENT INSTRUCTIONS

POWER SUPPLY ALIGNMENT

1. Maintain line voltage at 120 volts.
2. Connect DC VTVM to **TP3**, common to chassis.
3. Adjust **VR701** to negative 40 volts. (−40 V)

MAIN AMPLIFIER ALIGNMENT

Notes:

1. The "Ica" adjustment should be started about 5 minutes after setting the power switch to the ON position.
2. Speakers switch to OFF position.

CIRCUIT	DC VTVM CONNECTION	ADJUSTMENT POINTS	REMARKS
2 DC UNBALANCE	Connect DC VTVM between point (V) and point (W) (Left Channel), point (V) and point (Z) (Right Channel).	VR601 (Left Channel) VR602 (Right Channel)	Make sure that DC VTVM becomes 0mV.
3 Ica (POWER AMPLIFIER CURRENT)	Connect DC VTVM between point (W) and point (X) (Left Channel), point (Y) and point (Z) (Right Channel).	VR603 (Left Channel) VR604 (Right Channel)	Make adjustment so that the indication on DC VTVM becomes 7mV.

Notes:

1. Muting switch OdB
2. INPUT selector switch AM (AM ALIGNMENT)
FM AUTO (FM ALIGNMENT)
3. 300Ω FM dummy antenna Refer to fig. 1
4. Speaker switch ON
5. FM muting switch OFF
6. Tape monitor selector switch SOURCE
7. Mode switch MONO
8. Maintain line voltage at 120 volts.
9. Output of signal generator should be no higher than necessary to obtain an output reading.

SIGNAL GENERATOR or SWEEP GENERATOR	DIAL SETTING (DISTANCE)	INDICATOR (VTVM or SCOPE) (DISTORTION METER)	ADJUSTMENT POINTS	REMARKS
CONNECTION	FREQUENCY			

AM ALIGNMENT

4 High side through 0.001μF to AM antenna trimmer terminal. Common to chassis.	455kHz	Point of non-interference	Connect vertical amplifier of scope to TP1 through 0.1μF.	T2 (1st IFT) T3 (2nd IFT) L7 (3rd IFT)	Adjust for maximum amplitude and proper linearity.
5 Fashion loop of several turns of wire and radiate signal into loop of tuner.	600kHz (30% Mod. with 400Hz)	600kHz (7/8") (17.9mm)	Connect VTVM or scope to speaker terminal of receiver.	L6 (OSC Coil) L8 (ANT Coil)	Adjust for maximum output. Adjust ferrite core of L8 by screw driver.
6 Fashion loop of several turns of wire and radiate signal into loop of tuner.	1500kHz (30% Mod. with 400Hz)	1500kHz (7/8") (191.4mm)	Connect VTVM or scope to speaker terminal of receiver.	CT6 (OSC Trimmer) CT5 (ANT Trimmer)	Adjust for maximum output. Repeat steps (5) and (6).

FM IF ALIGNMENT

7 High side through 0.001μF to TP4 , Common to chassis.	10.7MHz	Point of non-interference	Connect vertical amplifier of scope to TP101 through detector. (Refer to fig. 2)	T1 (FM IFT)	Adjust for maximum amplitude and proper linearity.
8	No Signal	Point of non-interference	Center tuning meter of set.	T101 (DISCRI IFT)(B) Green Core	Adjust for center position of center tuning meter.

FM RF ALIGNMENT

9 Connect to FM antenna terminal through FM dummy antenna.	90MHz (100% Mod. with 400Hz)	90MHz (1 1/8") (28.5mm)	Connect VTVM or scope to speaker terminal of receiver.	L5 (OSC Coil) L4 (DET Coil) 2 L3 (DET Coil) 1 L2 (ANT Coil)	Adjust for maximum output.
10 Connect to FM antenna terminal through FM dummy antenna.	106MHz (100% Mod. with 400Hz)	106MHz (7/8") (181.7mm)	Connect VTVM or scope to speaker terminal of receiver.	CT4 (OSC Trimmer) CT3 (DET Trimmer) 2 CT2 (DET Trimmer) 1 CT1 (ANT Trimmer)	Adjust for maximum output. Repeat steps (9) and (10).

FM MONO DISTORTION ALIGNMENT

11 Connect to FM antenna terminal through FM dummy antenna.	100MHz (100% Mod. with 400Hz)	100MHz	Connect distortion meter to speaker terminal of receiver.	T101 (DISCRI IFT)(A) Orange Core	Adjust for minimum Distortion meter indication.
---	-------------------------------	--------	---	----------------------------------	---

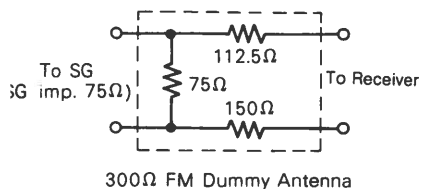


Fig. 1

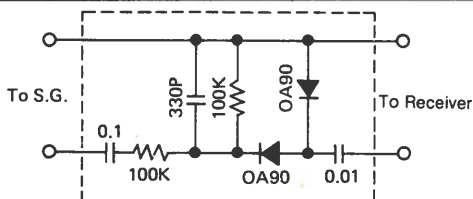
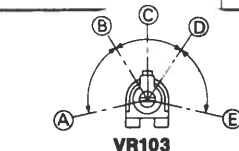


Fig. 2



- A — B, D — E: Stereo OFF Position.
 B — D: Stereo ON Position (Indicator Lighting).
 C: Adjust Point of Pilot Circuit.

Fig. 3

SIGNAL GENERATOR		DIAL SETTING	INDICATOR (VTVM or SCOPE)	ADJUSTMENT POINTS	REMARKS
CONNECTION	FREQUENCY				
FM SIGNAL METER ALIGNMENT					
Connect to FM antenna terminal through FM dummy antenna.	100MHz (30% Mod. with 400Hz)	100MHz	Signal meter of set	T102 (MUTING & METER IFT)	Adjust for maximum indication
Apply 19dB (9μV) to set.			Connect DC VTVM to TP102 Common to chassis.	T103 (MUTING IFT)	Adjust for maximum meter indication. (about 1.5V~2.0V)
Apply 100dB (0.1V) to set.			Signal meter of set.	VR101 (METER ADJ)	Adjust VR101 for about 4.7 point of signal meter indication
FM MUTING ALIGNMENT					
Connect to FM antenna terminal through FM dummy antenna. Apply 19 dB (9μV) to set.	100MHz (100% Mod. with 400Hz)	100MHz	Connect VTVM or scope to speaker terminal.	VR102 (MUTING ADJ)	Adjust so that output can be obtained.
FM MPX PILOT ALIGNMENT					
Using a frequency counter			Using alternate system		
① 98MHz Non-modulated mono signal applied to set. ② Muting switch to "on" ③ Connect frequency counter to TP103 through resistor (100kΩ). ④ Adjust VR103 to 19kHz ±30Hz.			① Apply stereo signal from generator or stereo station to receiver. ② Adjust VR103 until stereo indicator lights up. Cement arm of VR103 as shown in fig. 3.		
STEREO SEPARATION ALIGNMENT					
Note: 1. Stereo modulator Connect stereo modulator output to EXT. MOD. terminal of signal generator. Internal OSC 1kHz Pilot signal modulation 10% 2. Signal generator Frequency approximately 98MHz. Output level 72 dB (IHF). Modulation mode to FM. 3. Band selector switch FM AUTO 4. Mode switch. STEREO					
SIGNAL GENERATOR CONNECTION	STEREO MODULATOR MODE and MOD. RATE	INDICATOR (VTVM or SCOPE)		ADJUSTMENT POINT	REMARKS
FM antenna terminal through dummy antenna.	L (and R) 30% Modulation.	Connect VTVM or scope to speaker terminals through low pass filter. Refer to fig. 4		VR104	Adjust for minimum right (and left) output.

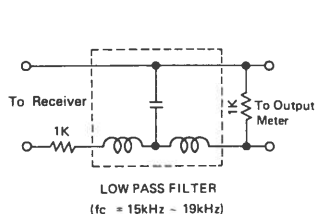


Fig. 4

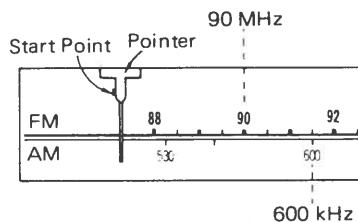
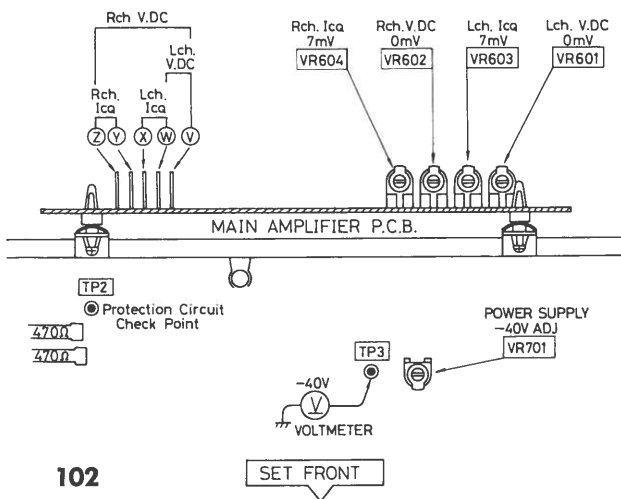
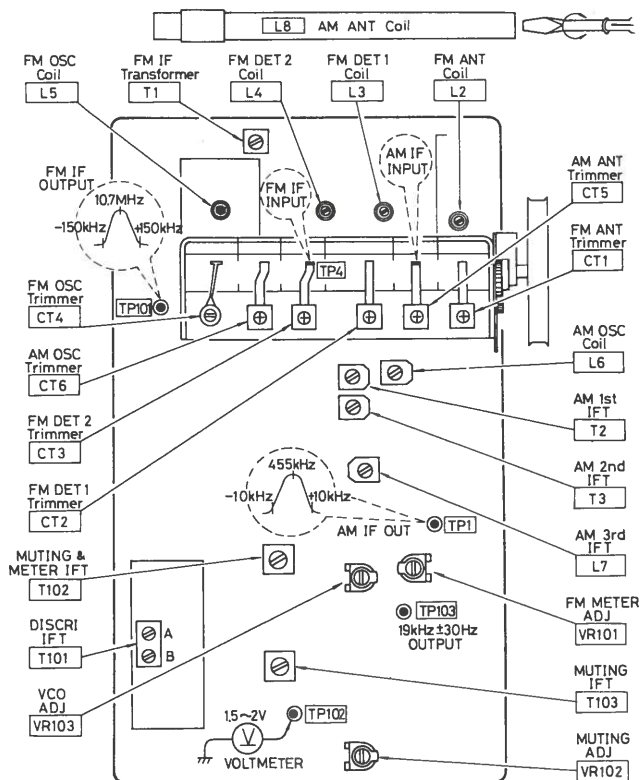
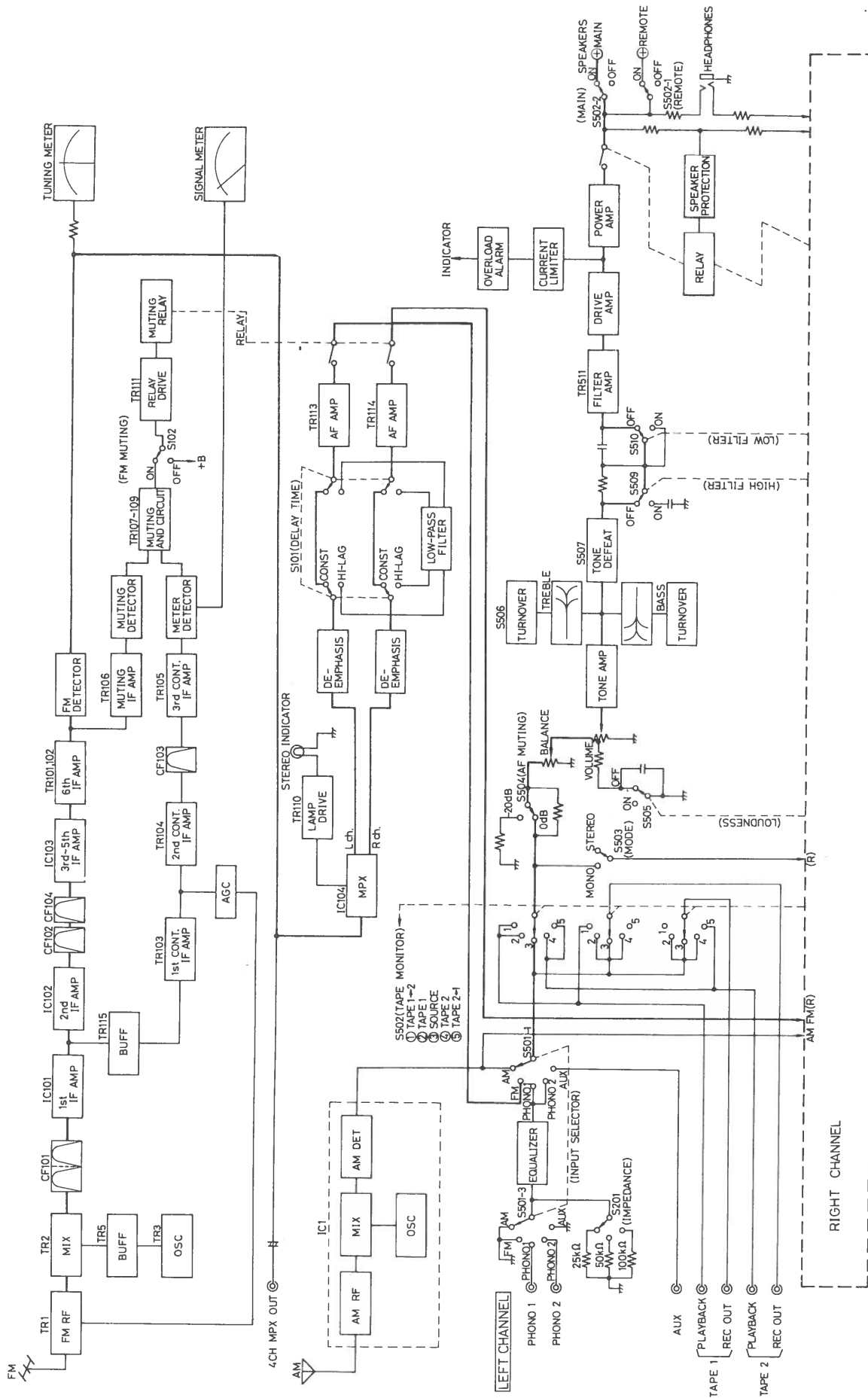


Fig. 5

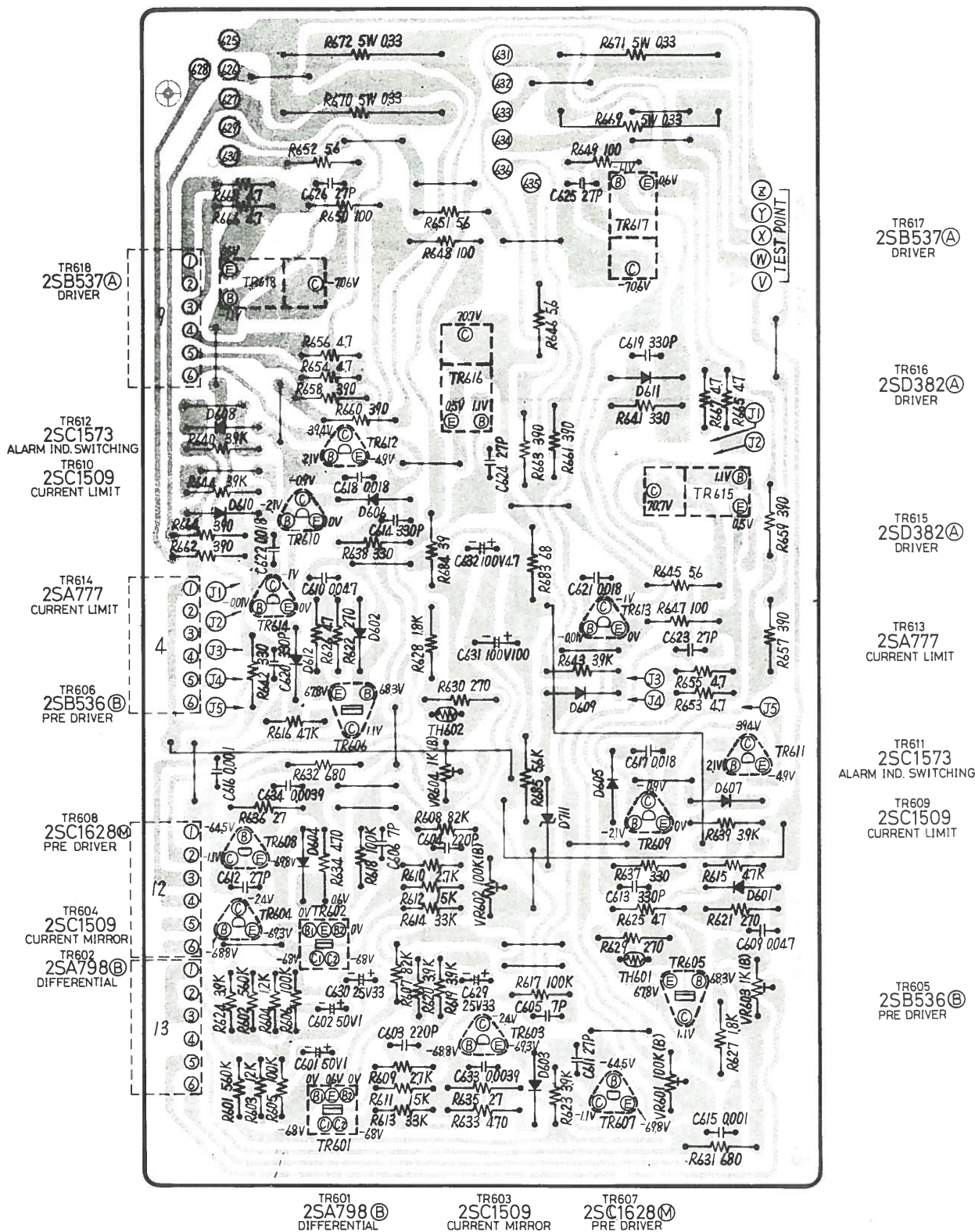


• Alignment Points

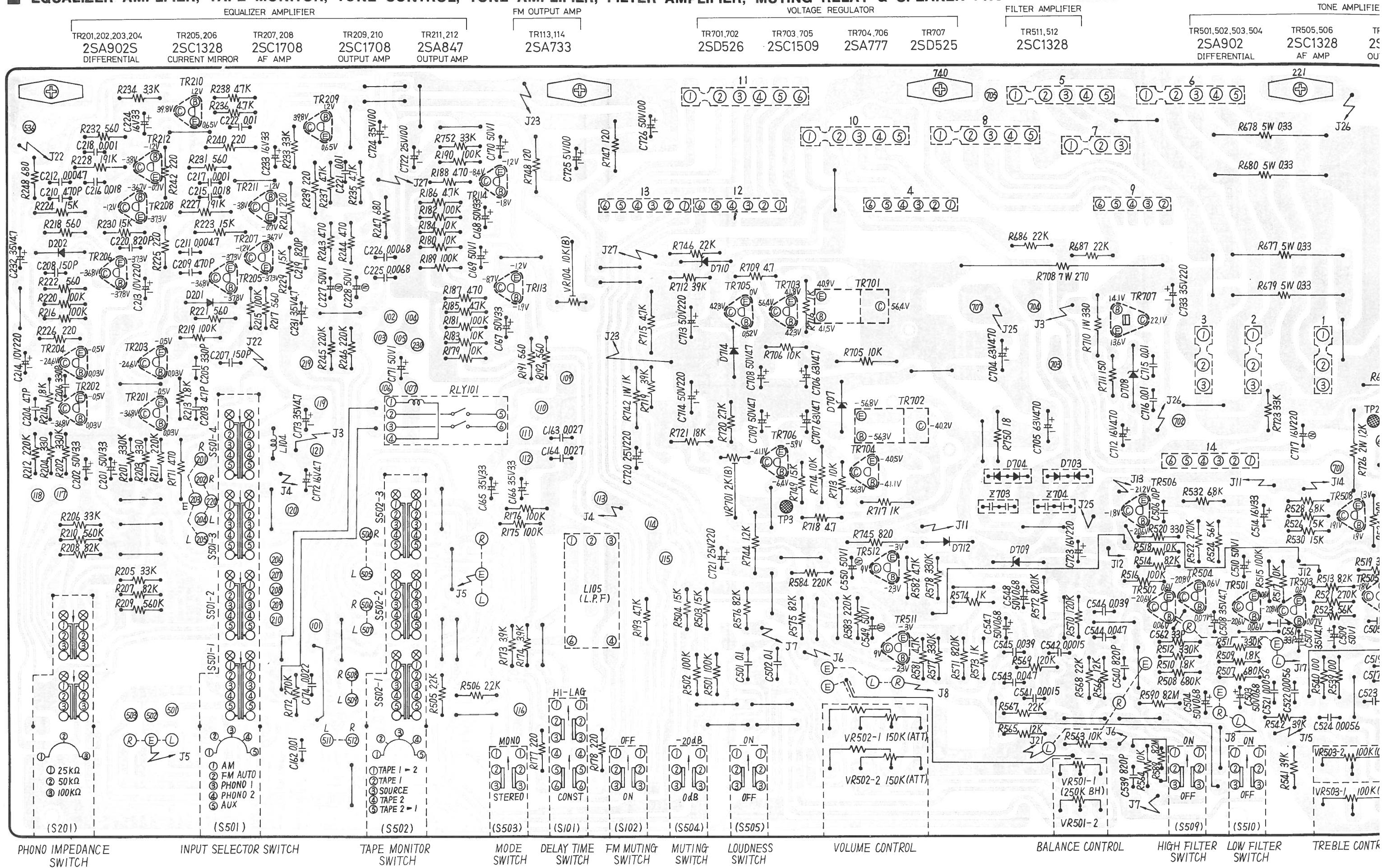




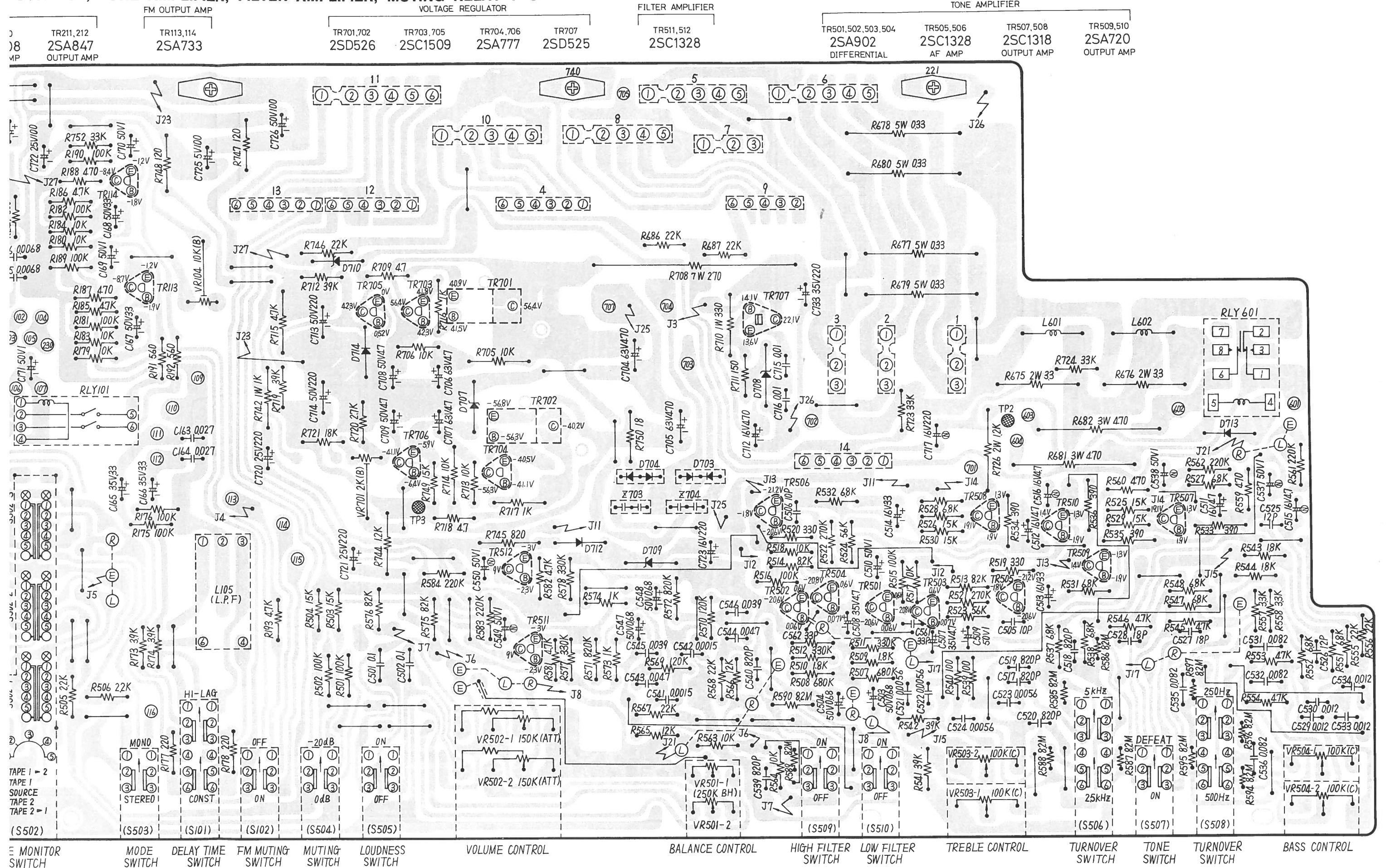
MAIN AMPLIFIER CIRCUIT BOARD



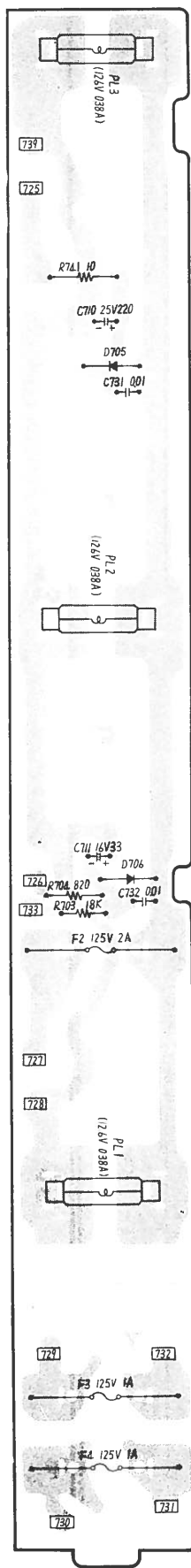
EQUALIZER AMPLIFIER, TAPE MONITOR, TONE CONTROL, TONE AMPLIFIER, FILTER AMPLIFIER, MUTING RELAY & SPEAKER PROTECTION RELAY CIRCUIT BOARD



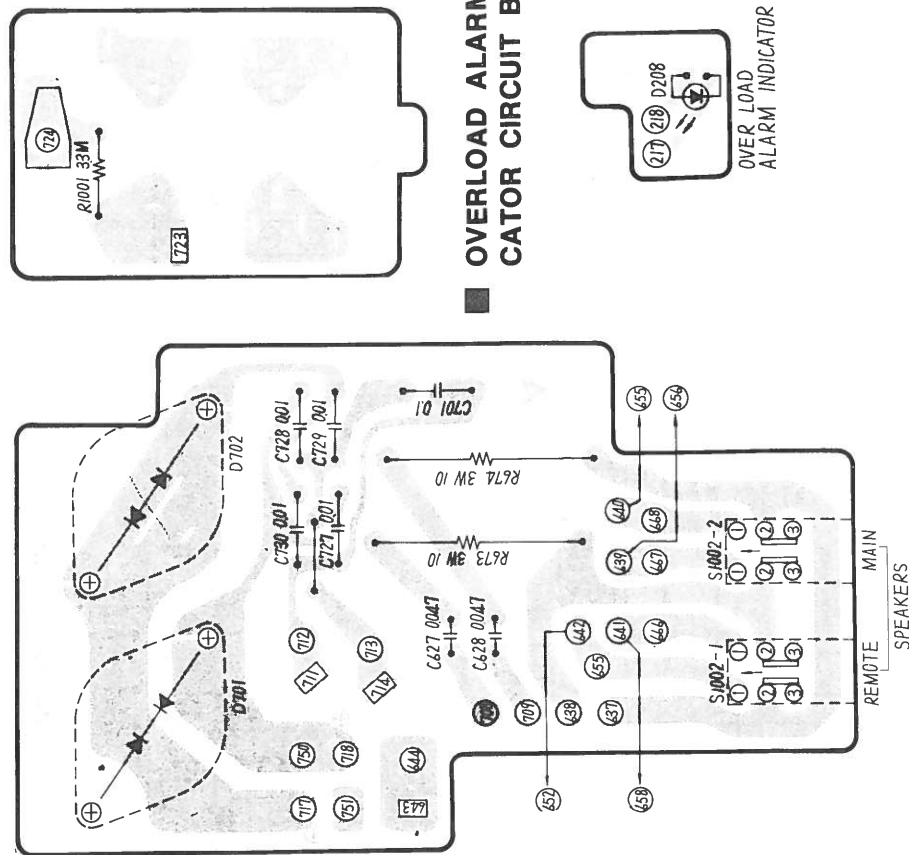
CONTROL, TONE AMPLIFIER, FILTER AMPLIFIER, MUTING RELAY & SPEAKER PROTECTION RELAY CIRCUIT BOARD



DIAL LIGHT & POWER SUPPLY OF FUNCTION INDICATOR CIRCUIT BOARD

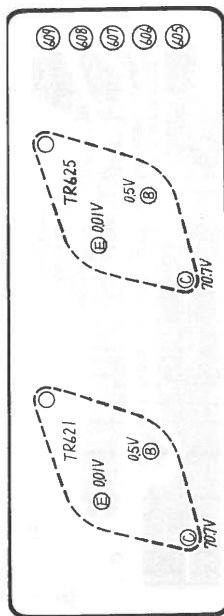
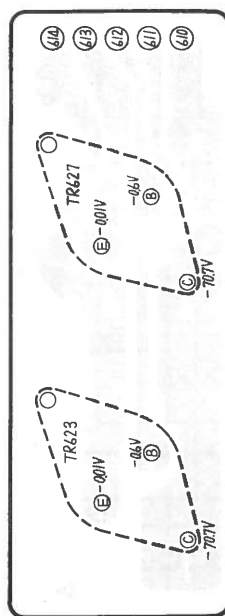


POWER SUPPLY OF POWER AMPLIFIER & SPEAKERS SWITCH CIRCUIT BOARD

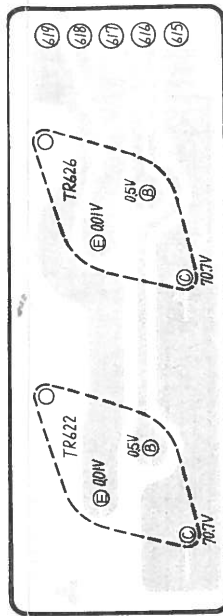
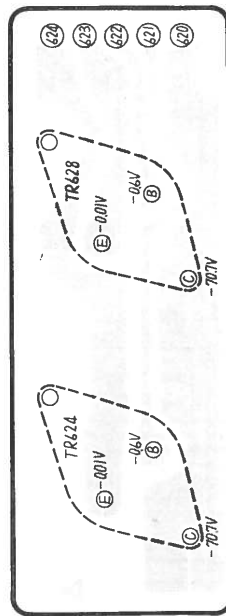


POWER AMPLIFIER CIRCUIT BOARDS

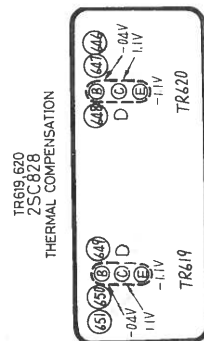
- **Left Channel Amplifier**



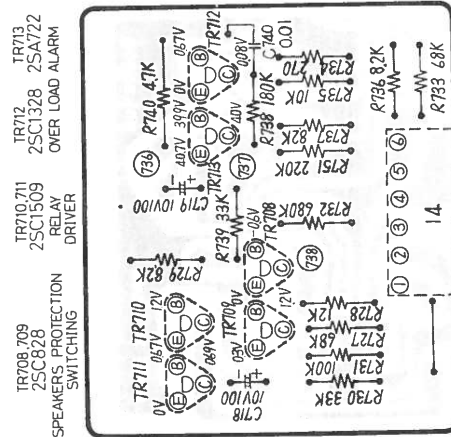
- **Right Channel Amplifier**



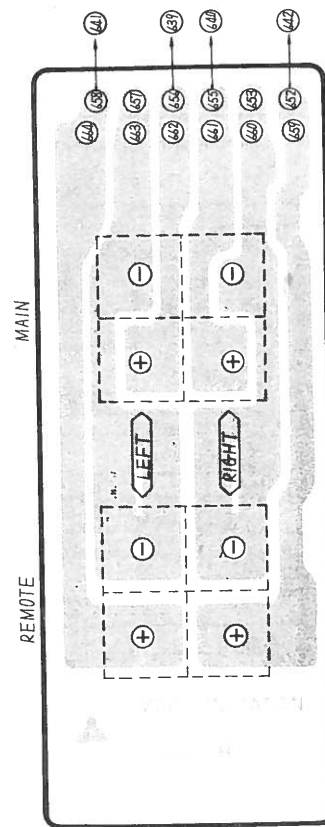
POWER AMPLIFIER THERMAL COMPENSATION CIRCUIT BOARD



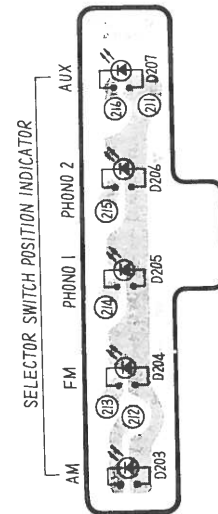
SPEAKER PROTECTION CIRCUIT BOARD



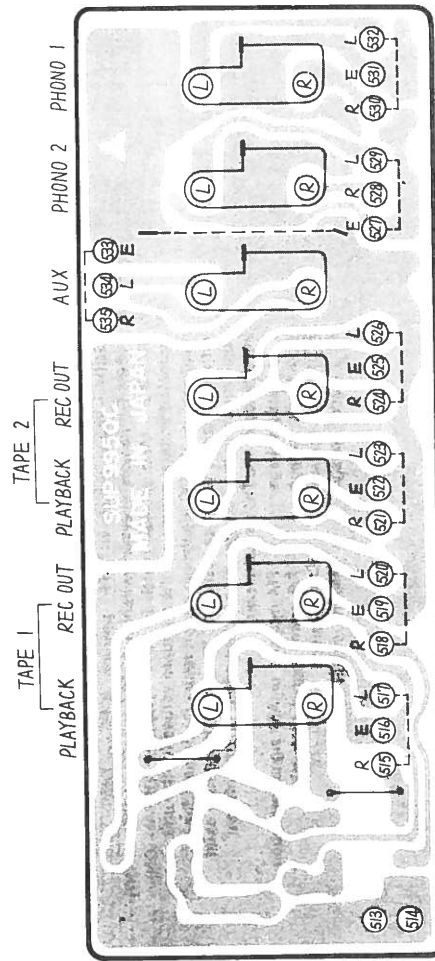
SPEAKERS TERMINAL CIRCUIT BOARD



FUNCTION INDICATOR CIRCUIT BOARD



INPUT & TAPE DECK CONNECTION TERMINAL CIRCUT BOARD



FM/AM TUNER CIRCUIT BOARD

TR1
3SK40

FM RF
G1 0 V
G2 3.9 V
S 0.3 V
D 12.0 V

TR2
3SK40

FM MIX
G1 0 V
G2 0.3 V
S 0.3 V
D 12.5 V

IC1
SV1HA1151

FM ANT
1 1.1 V 8 7.7 V
2 12.2 V 9 0.4 V
3 7.2 V 10 12.2 V
4 12.2 V 11 1.5 V
5 3.5 V 12 0.7 V
6 12.5 V 13 1.4 V
7 2.1 V 14 0.3 V

TR103
2SC829

CONTROL IF
B 1.6 V
C 7.6 V
E 0.9 V

TR104
2SC829

CONTROL IF
B 5.2 V
C 11.8 V
E 4.5 V

TR4 (AM SWITCHING)
2SC945

FM AM
B 0.6 V 0 V
C 0 V 0 V
E 0 V 0 V

TR105
2SC829

CONTROL IF
B 1.7 V
C 1.3 V
E 1.0 V

IC104 (FM MPX)
SV1HA1156

MONO STEREO
1 13.8 V 13.6 V
2 3 V 3 V
3 5.1 V 5.1 V
4 10.4 V 10.3 V
5 10.4 V 10.3 V
6 15.1 V 0.6 V
7 0 V 0 V
8 0.8 V 2.4 V
9 2.3 V 2.3 V
10 1.5 V 1.5 V
11 2.2 V 2.4 V
12 2.4 V 2.4 V
13 2.4 V 2.4 V
14 3.2 V 3.2 V

TR101 (IND. LAMP DRIVE)
2SA733

MONO STEREO
B 14.9 V 5.1 V
C 0 V 5.2 V
E 15.8 V 5.8 V

TR107
2SC945

NO-SIGNAL MUT-ON
B 0.8 V 0.7 V
C 4 V 0.1 V
E 1.3 V 0.07 V

TR108
2SC945

NO-SIGNAL MUT-ON
B 0.04 V 0.6 V
C 1.3 V 0.07 V
E 0.2 V 0.03 V

TR106 2SC829

CONTROL IF
B 2.9 V
C 13.2 V
E 2.2 V

TR3
2SC1674

FM OSC
B 2.7 V
C 9.8 V
E 2.0 V

TR5
2SK49

BUFFER
G 0 V
D 5.8 V
S 0 V

IC101
SV1AUPC555H

FM 1st IF
1 4.4 V
2 12.5 V
3 11.7 V
4 0 V
5 1.5 V
6 0 V
7 1.5 V

TR115
2SC829

BUFFER
B 4.4 V
C 12.5 V
E 3.7 V

IC102
SV1AUPC555H

FM 2nd IF
1 9.2 V
2 11.7 V
3 10.9 V
4 0 V
5 1.5 V
6 0 V
7 1.5 V

IC103
SV1AUPC577H

FM 3rd ~ 5th IF
1 5.3 V
2 1.9 V
3 1.9 V
4 0 V
5 9.9 V
6 3.1 V
7 10.7 V

TR101
2SC829

FM MUT-ON
B 0 V 2.9 V
C 13.6 V 10.4 V
E 0 V 2.2 V

TR102
2SC829

FM MUT-ON
B 0 V 2.8 V
C 13.6 V 9.4 V
E 0 V 2.2 V

TR109
2SC945

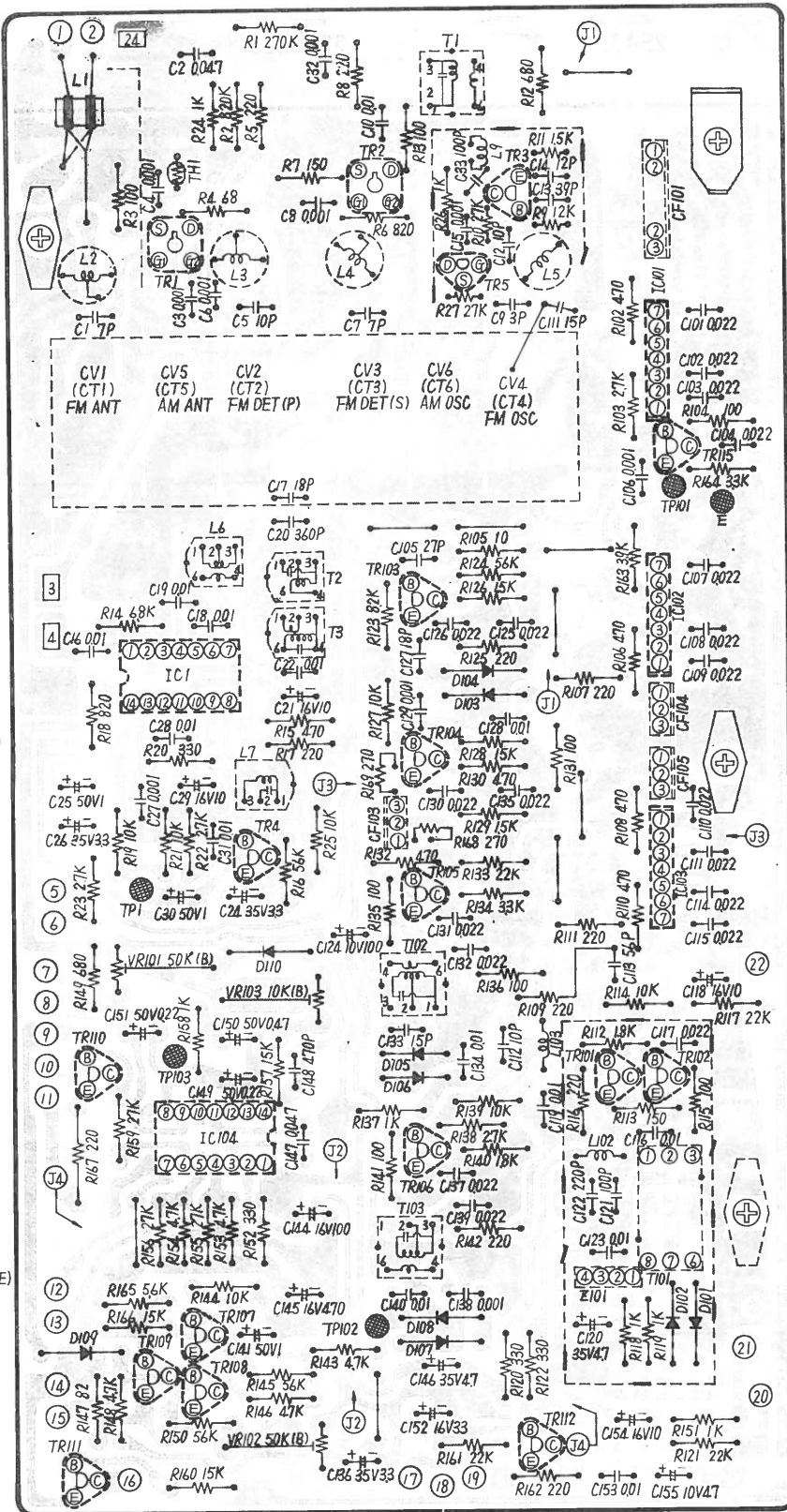
NO-SIGNAL MUT-ON
B 0.9 V 0.04 V
C 0.3 V 9.3 V
E 0.2 V 0.03 V

TR111
2SC945

MUT-OFF MUT-ON
B 0.3 V 0.7 V
C 13.4 V 0.07 V
E 0 V 0 V

TR112
2SC945

MUT-OFF MUT-ON
B 13.8 V 12.7 V
C 16 V 15.2 V
E 13.4 V 12 V



REPLACEMENT PARTS LIST

Important Safety Notice
Components identified by shaded area have special characteristics important for safety.
When replacing any of these components use only manufacturer's specified parts.

NOTE: 1. Part numbers are indicated on most mechanical parts.
Please use this part number for parts orders.

Ref. No.	Part No.	Part Name & Description	Per Set	Remarks
INTEGRATED CIRCUITS				
IC1	SVIHA1151	AM RF, IF Amplifier & AM Detector	1	
IC101, 102	SVIAUPC55HF	FM IF Amplifier	2	
IC103	SVIAUPC57HF	FM IF Amplifier	1	
IC104	SVIHA1156W	FM Multiplex Circuit	1	
TRANSISTORS				
TR1, 2	3SK40-L	FM RF Amplifier & FM Mix [FET]	2	
TR3	2SC1674-M	FM Oscillator	1	
TR4, 107, 108, 109, 111, 112	2SC945-R	Shock Noise & Muting Relay Switching	6	
TR5	2SK49-H1	Buffer Amplifier [FET]	1	
TR101, 102, 103, 104, 105, 106, 115	2SC829-C1	FM Control IF Amplifier	7	
TR201, 202, 203, 204	2SA902S-F	Differential Amplifier, (in ranks For G)	4	
TR205, 206, 505, 506, 511, 512, 708, 709, 712	2SC1328-T	Current Mirror AF Amplifier & Speaker Protection Switching	9	
TR207, 208, 209, 210	2SC1708-G	Equalizer Amplifier	4	
TR211, 212	2SA847-G	AF Amplifier	2	
TR110, 113, 114	2SA733-P1	Stereo Indicator Driver & AF Amp.	3	
TR501, 502, 503, 504, 713	2SA902-F	Differential Amplifier, (in ranks For G) (Use in pair ranks)	5	
TR507, 508	2SC1318-T	Tone Amplifier (in ranks S or T)	2	
TR509, 510	2SA720-R	Tone Amplifier (in ranks R, S or T)	2	
TR601, 602	2SA7988-F2	Differential Amplifier (in ranks F2 or G2)	2	
TR603, 604, 609, 610, 703, 705, 710, 711	2SC1509-R	Pre Drive Amp. Current Protection, Voltage Control & Relay Driver (in ranks Q or R)	8	
TR605, 606	2SB536B-M9	Pre Drive Amplifier (in ranks M9 or N9)	2	
TR607, 608	2SC1628M-Y	Pre Drive Amplifier (in ranks Y or O)	2	
TR611, 612	2SC1573-Q	Current Protection (in ranks R or Q)	2	
TR613, 614	2SA777-Q	Current Protection (in ranks R or Q)	2	
TR615, 616	2SD382A-L2	Drive Amplifier (in ranks L2 or M2)	2	
TR617, 618	2SB537A-L2	Drive Amplifier (in ranks L2 or M2)	2	
TR619, 620	2SC828A-R	Thermal Compensation	2	
TR621, 622, 625, 626	2SD555-Q	Power Amplifier (in ranks Q or R)	4	
TR623, 624, 627, 628	2SB600-Q	Power Amplifier (in ranks Q or R)	4	
TR701, 702	2SD526-O2	Voltage Control (in ranks R2, O2 or Y2)	2	
TR704	2SA777-Q	Voltage Control (in ranks Q or R)	1	
TR707	2SD525-O	Voltage Control (in ranks R, O or Y)	1	
DIODES				
DI01, 102, 103, 104, 105, 106, 107, 108,	2-0A99 MA150	FM Discriminator Muting & Meter Detector, AOC, AGC & Switching	1pair 23	

Ref. No.	Part No.	Part Name & Description	Per Set	Remarks
D109, 110, 201, 202, 601, 602, 603, 604, 605, 606, 607, 608, 609, 610, 611, 612, 714	LN25D	Indicator [LED]	6	
D203, 204, 205, 206, 207, 208				
D701	RVDSG6TS	Rectifier	1	
D702	RVDSG5TR	Rectifier	1	
D703	SVDM1152	Rectifier	1	
D704	SVDM1152R	Rectifier	1	
D706, 706, 712, 713	SVD10E1	Rectifier & Relay Control	4	
D707	SVDMZ306	6V Zener, Voltage Stabilizer	1	
D708	SVDMZ414	14V Zener, Voltage Stabilizer	1	
D709	SVDMZ314	14V Zener, Voltage Stabilizer	1	
D710, 711	SVDMZ324	24V Zener, Voltage Stabilizer	2	
COILS and TRANSFORMERS				
L1	SLAA4W1-3	FM Balun Coil	1	
L2, 4	SLAA4N11	FM Antenna Coil	2	
L3	SLDA4N21	FM Detector Coil	1	
L5	SLOA4N14	FM Oscillator Coil	1	
L6	RLOZM4P	AM Oscillator Coil	1	
L7	SLI2M401	AM IF Transformer	1	
L8	SLF2D25	AM Antenna Coil	1	
L9	RLQY25S5	Choke Coil	1	
L102, 103, 104, 105	SLOX101-2D	Low Pass Filter	3	
L601, 602	SLMA123-K	High Character Correct Coil	1	
T1	SLIA4C101	FM 1st IF Transformer	2	
T2	RLI2M201	AM IF Transformer	1	
T3	RLI2M202	AM IF Transformer	1	
T101	SLIA4D51	FM Discriminator IF Transformer	1	
T102	SLIA4C241	Muting IF Transformer	1	
T103	SLIA4Z242	Muting IF Transformer	1	
T1001	SLT6Y1	Power Transformer	1	
CERAMIC FILTERS				
CF103, 104, 105	SVFF10M12CGG SVFF10M12CGB SVFF10M12CGR SVFF10M12CGW SVFF10M12CGY SVFF10M14GG SVFF10M14GB SVFF10M14GR SVFF10M14GW SVFF10M14GY (Use pair ranks as same as CF101, 103, 104 and 105)	FM IF Circuit, 10.6MHz, Green FM IF Circuit, 10.65MHz, Black FM IF Circuit, 10.7MHz, Red FM IF Circuit, 10.75MHz, White FM IF Circuit, 10.8MHz, Yellow FM IF Circuit, 10.8MHz, Green FM IF Circuit, 10.85MHz, Black FM IF Circuit, 10.7MHz, Red FM IF Circuit, 10.75MHz, White FM IF Circuit, 10.8MHz, Yellow	each 3 each 1	
CF101				
RESISTORS				
R1	ERD25TJ274	270k Ω , 1/4W, \pm 5%, Carbon	1	
R2	ERD25TJ824	820k Ω , 1/4W, \pm 5%, Carbon	1	
R3	ERD25TJ101	100k Ω , 1/4W, \pm 5%, Carbon	1	
R4	ERD25TJ680	68k Ω , 1/4W, \pm 5%, Carbon	1	

Ref. No.	Part No.	Part Name & Description	Per Set	Remarks
R5	ERD25TJ221	220Ω, 1/4W, ±5%, Carbon	1	
R6	ERD25TJ821	820Ω, 1/4W, ±5%, Carbon	1	
R7	ERD25TJ151	150Ω, 1/4W, ±5%, Carbon	1	
R8	ERD25TJ221	220Ω, 1/4W, ±5%, Carbon	1	
R9	ERD25TJ123	12kΩ, 1/4W, ±5%, Carbon	1	
R10	ERD25TJ273	27kΩ, 1/4W, ±5%, Carbon	1	
R11	ERD25TJ152	1.5kΩ, 1/4W, ±5%, Carbon	1	
R12	ERD25TJ881	680Ω, 1/4W, ±5%, Carbon	1	
R13	ERD25TJ101	100Ω, 1/4W, ±5%, Carbon	1	
R14	ERD25TJ682	6.8kΩ, 1/4W, ±5%, Carbon	1	
R15	ERD25TJ471	470Ω, 1/4W, ±5%, Carbon	1	
R16	ERD25TJ563	56kΩ, 1/4W, ±5%, Carbon	1	
R17	ERD25TJ221	220Ω, 1/4W, ±5%, Carbon	1	
R18	ERD25TJ821	820Ω, 1/4W, ±5%, Carbon	1	
R19	ERD25TJ103	10kΩ, 1/4W, ±5%, Carbon	1	
R20	ERD25TJ331	330Ω, 1/4W, ±5%, Carbon	1	
R21	ERD25TJ103	10kΩ, 1/4W, ±5%, Carbon	1	
R22	ERD25TJ272	2.7kΩ, 1/4W, ±5%, Carbon	1	
R23	ERD25TJ272	2.7kΩ, 1/4W, ±5%, Carbon	1	
R24	ERD25TJ102	10kΩ, 1/4W, ±5%, Carbon	1	
R25	ERD25TJ103	10kΩ, 1/4W, ±5%, Carbon	1	
R26	ERD25TJ102	1kΩ, 1/4W, ±5%, Carbon	1	
R27	ERD25TJ273	27kΩ, 1/4W, ±5%, Carbon	1	
R102	ERD25TJ471	470Ω, 1/4W, ±5%, Carbon	1	
R103	ERD25TJ272	2.7kΩ, 1/4W, ±5%, Carbon	1	
R104	ERD25TJ101	100Ω, 1/4W, ±5%, Carbon	1	
R105	ERD25TJ100	10Ω, 1/4W, ±5%, Carbon	1	
R106	ERD25TJ471	470Ω, 1/4W, ±5%, Carbon	1	
R107	ERD25TJ221	220Ω, 1/4W, ±5%, Carbon	1	
R108	ERD25TJ471	470Ω, 1/4W, ±5%, Carbon	1	
R109	ERD25TJ221	220Ω, 1/4W, ±5%, Carbon	1	
R110	ERD25TJ471	470Ω, 1/4W, ±5%, Carbon	1	
R111	ERD25TJ221	220Ω, 1/4W, ±5%, Carbon	1	
R112	ERD25TJ182	1.8kΩ, 1/4W, ±5%, Carbon	1	
R113	ERD25TJ151	150Ω, 1/4W, ±5%, Carbon	1	
R114	ERD25TJ103	10kΩ, 1/4W, ±5%, Carbon	1	
R115	ERD25TJ101	100Ω, 1/4W, ±5%, Carbon	1	
R116	ERD25TJ221	220Ω, 1/4W, ±5%, Carbon	1	
R117	ERD25TJ223	22kΩ, 1/4W, ±5%, Carbon	1	
R118	ERD25TJ102	1kΩ, 1/4W, ±5%, Carbon	1	
R119	ERD25TJ102	1kΩ, 1/4W, ±5%, Carbon	1	
R120	ERD25TJ331	330Ω, 1/4W, ±5%, Carbon	1	
R121	ERD25TJ223	22kΩ, 1/4W, ±5%, Carbon	1	
R122	ERD25TJ331	330Ω, 1/4W, ±5%, Carbon	1	
R123	ERD25TJ822	8.2kΩ, 1/4W, ±5%, Carbon	1	
R124	ERD25TJ563	56kΩ, 1/4W, ±5%, Carbon	1	
R125	ERD25TJ223	22kΩ, 1/4W, ±5%, Carbon	1	
R126	ERD25TJ103	10kΩ, 1/4W, ±5%, Carbon	1	
R127	ERD25TJ103	10kΩ, 1/4W, ±5%, Carbon	1	
R128	ERD25TJ152	15kΩ, 1/4W, ±5%, Carbon	1	
R129	ERD25TJ152	1.5kΩ, 1/4W, ±5%, Carbon	1	
R130	ERD25TJ471	470Ω, 1/4W, ±5%, Carbon	1	
R131	ERD25TJ101	100Ω, 1/4W, ±5%, Carbon	1	
R132	ERD25TJ332	3.3kΩ, 1/4W, ±5%, Carbon	1	
R133	ERD25TJ223	22kΩ, 1/4W, ±5%, Carbon	1	
R134	ERD25TJ331	330Ω, 1/4W, ±5%, Carbon	1	
R135	ERD25TJ101	100Ω, 1/4W, ±5%, Carbon	1	
R136	ERD25TJ101	100Ω, 1/4W, ±5%, Carbon	1	
R137	ERD25TJ102	1kΩ, 1/4W, ±5%, Carbon	1	
R138	ERD25TJ272	2.7kΩ, 1/4W, ±5%, Carbon	1	
R139	ERD25TJ103	10kΩ, 1/4W, ±5%, Carbon	1	
R140	ERD25TJ182	1.8kΩ, 1/4W, ±5%, Carbon	1	
R141	ERD25TJ101	100Ω, 1/4W, ±5%, Carbon	1	
R142	ERD25TJ221	220Ω, 1/4W, ±5%, Carbon	1	
R143	ERD25TJ472	4.7kΩ, 1/4W, ±5%, Carbon	1	
R144	ERD25TJ103	10kΩ, 1/4W, ±5%, Carbon	1	
R145	ERD25TJ563	56kΩ, 1/4W, ±5%, Carbon	1	
R146	ERD25TJ473	47kΩ, 1/4W, ±5%, Carbon	1	
R147	ERD25TJ820	82Ω, 1/4W, ±5%, Carbon	1	
R148	ERD25TJ472	4.7kΩ, 1/4W, ±5%, Carbon	1	
R149	ERD25TJ681	680Ω, 1/4W, ±5%, Carbon	1	
R150	ERD25TJ563	56kΩ, 1/4W, ±5%, Carbon	1	
R151	ERD25TJ102	1kΩ, 1/4W, ±5%, Carbon	1	
R152	ERD25TJ331	330Ω, 1/4W, ±5%, Carbon	1	
R153	ERD25TJ472	4.7kΩ, 1/4W, ±5%, Carbon	1	
R154	ERD25TJ472	4.7kΩ, 1/4W, ±5%, Carbon	1	
R155	ERD25TJ273	27kΩ, 1/4W, ±5%, Carbon	1	
R156	ERD25TJ273	27kΩ, 1/4W, ±5%, Carbon	1	
R157	ERD25TJ153	15kΩ, 1/4W, ±5%, Carbon	1	
R158	ERD25TJ102	1kΩ, 1/4W, ±5%, Carbon	1	
R159	ERD25TJ273	27kΩ, 1/4W, ±5%, Carbon	1	
R160	ERD25TJ153	15kΩ, 1/4W, ±5%, Carbon	1	
R161	ERD25TJ223	22kΩ, 1/4W, ±5%, Carbon	1	
R162	ERD25TJ221	220Ω, 1/4W, ±5%, Carbon	1	
R163	ERD25TJ382	3.9kΩ, 1/4W, ±5%, Carbon	1	
R164	ERD25TJ332	3.3kΩ, 1/4W, ±5%, Carbon	1	
R165	ERD25TJ562	5.6kΩ, 1/4W, ±5%, Carbon	1	
R166	ERD25TJ153	15kΩ, 1/4W, ±5%, Carbon	1	
R167	ERD50TJ221	220Ω, 1/2W, ±5%, Carbon	1	
R168	ERD50TJ270	27Ω, 1/4W, ±5%, Carbon	1	
R169	ERD25TJ270	27Ω, 1/4W, ±5%, Carbon	1	
R171	ERD12FJ471	470Ω, 1/2W, ±5%, Carbon	1	
R172	ERD25TJ274	270kΩ, 1/4W, ±5%, Carbon	1	
R173	ERD25TJ332	3.3kΩ, 1/4W, ±5%, Carbon	1	
P174	ERD25TJ332	3.3kΩ, 1/4W, ±5%, Carbon	1	
R175	ERD25TJ104	100kΩ, 1/4W, ±5%, Carbon	1	
R176	ERD25TJ104	100kΩ, 1/4W, ±5%, Carbon	1	
R177	ERD25TJ221	220Ω, 1/4W, ±5%, Carbon	1	
R178	ERD25TJ221	220Ω, 1/4W, ±5%, Carbon	1	
R179	ERD25TJ103	10kΩ, 1/4W, ±5%, Carbon	1	
R180	ERD25TJ103	10kΩ, 1/4W, ±5%, Carbon	1	
R181	ERD25TJ104	100kΩ, 1/4W, ±5%, Carbon	1	
R182	ERD25TJ104	100kΩ, 1/4W, ±5%, Carbon	1	
R183	ERD25TJ103	10kΩ, 1/4W, ±5%, Carbon	1	
R184	ERD25TJ103	10kΩ, 1/4W, ±5%, Carbon	1	
R185	ERD25TJ472	4.7kΩ, 1/4W, ±5%, Carbon	1	
R186	ERD25TJ472	4.7kΩ, 1/4W, ±5%, Carbon	1	
R187	ERD25TJ471	470Ω, 1/4W, ±5%, Carbon	1	
R188	ERD25TJ471	470Ω, 1/4W, ±5%, Carbon	1	
R189	ERD25TJ104	100kΩ, 1/4W, ±5%, Carbon	1	
R190	ERD25TJ104	100kΩ, 1/4W, ±5%, Carbon	1	
R191	ERD25TJ561	560Ω, 1/4W, ±5%, Carbon	1	
R192	ERD25TJ561	560Ω, 1/4W, ±5%, Carbon	1	
R193	ERD25TJ472	4.7kΩ, 1/4W, ±5%, Carbon	1	
R201	ERD14TSJ334	330kΩ, 1/4W, ±5%, Carbon	1	
R202	ERD14TSJ334	330kΩ, 1/4W, ±5%, Carbon	1	
R203	ERD25TJ331	330Ω, 1/4W, ±5%, Carbon	1	
R204	ERD25TJ331	330Ω, 1/4W, ±5%, Carbon	1	
R205	ERD25TJ333	33kΩ, 1/4W, ±5%, Carbon	1	
R206	ERD25TJ333	33kΩ, 1/4W, ±5%, Carbon	1	
R207	ERD25TJ823	82kΩ, 1/4W, ±5%, Carbon	1	

Technics SA-5770M, SA-5770MC

Ref. No.	Part No.	Part Name & Description	Per Set	Remarks
R726	ERG2ANJ122	1.2kΩ, 2W, ±5%, Metallic	1	
R727	ERD25TJ683	68kΩ, 1/4W, ±5%, Carbon	1	
R728	ERD25TJ123	12kΩ, 1/4W, ±5%, Carbon	1	
R729	ERD25TJ822	82kΩ, 1/4W, ±5%, Carbon	1	
R730	ERD25TJ333	33kΩ, 1/4W, ±5%, Carbon	1	
R731	ERD25TJ104	100kΩ, 1/4W, ±5%, Carbon	1	
R732	ERD25TJ684	680kΩ, 1/4W, ±5%, Carbon	1	
R733	ERD25TJ683	68kΩ, 1/4W, ±5%, Carbon	1	
R734	ERD25TJ271	270Ω, 1/4W, ±5%, Carbon	1	
R735	ERD25TJ103	10kΩ, 1/4W, ±5%, Carbon	1	
R736	ERD25TJ822	8.2kΩ, 1/4W, ±5%, Carbon	1	
R737	ERD25TJ333	33kΩ, 1/4W, ±5%, Carbon	1	
R738	ERD25TJ184	180kΩ, 1/4W, ±5%, Carbon	1	
R739	ERD25TJ472	47kΩ, 1/4W, ±5%, Carbon	1	
R740	ERD12FJ472	4.7kΩ, 1/2W, ±5%, Carbon	1	
R741	ERD12FJ100	10Ω, 1W, ±5%, Carbon	1	
R742	ERG1ANJ102	1kΩ, 1/2W, ±10%, Solid	1	
R744	ERD12FJ122	1.2kΩ, 1/2W, ±5%, Carbon	1	
R745	ERD14FJ821	820Ω, 1/4W, ±5%, Carbon	1	
R746	ERD14FJ222	2.2kΩ, 1/4W, ±5%, Carbon	1	
R747	ERD14FJ121	120Ω, 1/4W, ±5%, Carbon	1	
R748	ERD14FJ121	120Ω, 1/4W, ±5%, Carbon	1	
R749	ERD25TJ153	15kΩ, 1/4W, ±5%, Carbon	1	
R750	ERD14FJ180	18Ω, 1/4W, ±5%, Carbon	1	
R751	ERD25TJ224	220kΩ, 1/4W, ±5%, Carbon	1	
R752	ERD25TJ332	33kΩ, 1/4W, ±5%, Carbon	1	
R801	ERG3ANJ100	10Ω, 3W, ±5%, Metallic	1	
R802	ERG3ANJ100	10Ω, 3W, ±5%, Metallic	1	
R1001	ERC12ZGK335	3.3MΩ, 1/2W, ±10%, Solid	1	
VARIABLE RESISTORS				
VR101, 102	EVL3SAA00B54	50kΩ(B), Muting & Meter Adjustment	2	
VR103, 104	EVL3SAA00B14	10kΩ(B), VCO & Separation Adjustment	2	
VR601, 602	EVL3SAA00B15	100kΩ(B), DC Unbalance Adjustment	2	
VR602, 603	EVL3SAA00B13	1kΩ(B), Ico. Adjustment	2	
VR701	EVL3SAA00B23	2kΩ(B), Voltage Adjustment	1	
VR501	EVK7RA031252	250kΩ(BH), Balance Control	1	
VR502	EWCF2AF30ATC	150kΩ, Volume Control [ATT]	1	
VR503, 504	EWF2WA037C15	100kΩ(C), Bass & Treble Control	2	
THERMISTORS				
TH1, 601, 602	ART251	Thermistor, Thermal Compensator	3	
CAPACITORS				
C1	ECCD1H070DC	7pF, 50WV, ±0.5pF, Ceramic	1	
C2	ECQM05473KZ	0.047μF, 50WV, ±10%, Polyester	1	
C3	ECKD1H102MD	0.001μF, 50WV, ±20%, Ceramic	1	
C4	ECKD1H102PF	0.001μF, 50WV, ±100%, Ceramic	1	
C5	ECCD1H100KR	100pF, 50WV, ±10%, Ceramic	1	
C6	ECKD1H102MD	0.001μF, 50WV, ±20%, Ceramic	1	
C7	ECCD1H070DC	7pF, 50WV, ±0.5pF, Ceramic	1	
C8	ECKD1H102MDA	0.001μF, 50WV, ±20%, Ceramic	1	
C9	ECCD1H030CC	3pF, 50WV, ±0.25pF, Ceramic	1	
C10	ECKD1H103MD	0.01μF, 50WV, ±20%, Ceramic	1	
C11	ECCD1H150KR	15pF, 50WV, ±10%, Ceramic	1	
C12	ECCD1H100KC	10pF, 50WV, ±10%, Ceramic	1	
C13	ECCD1H390KC	39pF, 50WV, ±10%, Ceramic	1	

Ref. No.	Part No.	Part Name & Description	Per Set	Remarks
C14	ECCD1H120KC	12pF, 50WV, ±10%, Ceramic	1	
C15	ECKD1H102MD	0.001μF, 50WV, ±20%, Ceramic	1	
C16	ECCD1H103MD	0.01μF, 50WV, ±20%, Ceramic	1	
C17	ECCD1H180KC	18pF, 50WV, ±10%, Ceramic	1	
C18	ECCD1H103MD	0.01μF, 50WV, ±20%, Ceramic	1	
C19	ECKD1H103PF	0.01μF, 50WV, ±100%, Ceramic	1	
C20	ECQS1361JZ	360pF, 125WV, ±5%, Styrol	1	
C21	ECEA16V10	10μF, 16WV, ±5%, Electrolytic	1	
C22	ECCD1H103PF	0.01μF, 50WV, ±100%, Ceramic	1	
C24	ECEA50V3R3	3.3μF, 50WV, ±10%, Electrolytic	1	
C25	ECEA50V1	1μF, 50WV, ±20%, Electrolytic	1	
C26	ECCD1H103MD	0.001μF, 50WV, ±20%, Ceramic	1	
C27	ECCD1H103PF	0.01μF, 50WV, ±100%, Ceramic	1	
C28	ECEA16V10	10μF, 16WV, ±5%, Electrolytic	1	
C29	ECEA50V1	1μF, 50WV, ±100%, Electrolytic	1	
C30	ECCD1H103PF	0.01μF, 50WV, ±100%, Ceramic	1	
C31	ECCD1H102PF	0.001μF, 50WV, ±100%, Ceramic	1	
C32	ECCD1H101K	100pF, 50WV, ±10%, Ceramic	1	
C33	ECCD1H101K	100pF, 50WV, ±10%, Ceramic	1	
C101	ECCD1H223PF	0.022μF, 50WV, ±10%, Ceramic	1	
C102	ECCD1H223PF	0.022μF, 50WV, ±10%, Ceramic	1	
C103	ECCD1H223PF	0.022μF, 50WV, ±10%, Ceramic	1	
C104	ECCD1H270KC	27pF, 50WV, ±10%, Ceramic	1	
C105	ECCD1H270KC	27pF, 50WV, ±10%, Ceramic	1	
C106	ECCD1H102PF	0.001μF, 50WV, ±100%, Ceramic	1	
C107	ECCD1H223PF	0.022μF, 50WV, ±100%, Ceramic	1	
C108	ECCD1H223PF	0.022μF, 50WV, ±100%, Ceramic	1	
C109	ECCD1H223PF	0.022μF, 50WV, ±100%, Ceramic	1	
C110	ECCD1H223PF	0.022μF, 50WV, ±100%, Ceramic	1	
C111	ECCD1H223PF	0.022μF, 50WV, ±100%, Ceramic	1	
C112	ECCD1H100KU	10pF, 50WV, ±10%, Ceramic	1	
C113	ECCD1H560K	56pF, 50WV, ±10%, Ceramic	1	
C114	ECCD1H223PF	0.022μF, 50WV, ±100%, Ceramic	1	
C115	ECCD1H223PF	0.022μF, 50WV, ±100%, Ceramic	1	
C116	ECCD1H103PF	0.01μF, 50WV, ±100%, Ceramic	1	
C117	ECCD1H223PF	0.022μF, 50WV, ±100%, Ceramic	1	
C118	ECEA16V10	10μF, 16WV, ±5%, Electrolytic	1	
C119	ECCD1H103PF	0.01μF, 50WV, ±100%, Ceramic	1	
C120	ECEA35V4R7	4.7μF, 35WV, ±10%, Electrolytic	1	
C121	ECCD1H101K	100pF, 50WV, ±10%, Ceramic	1	
C122	ECCD1H221K	220pF, 50WV, ±10%, Ceramic	1	
C123	ECCD1H103PF	0.01μF, 50WV, ±100%, Ceramic	1	
C124	ECEA10V100	100μF, 10WV, ±10%, Electrolytic	1	
C125	ECQM05223KZ	0.022μF, 50WV, ±10%, Polyester	1	
C126	ECCD1H223PF	0.022μF, 50WV, ±100%, Ceramic	1	
C127	ECCD1H180KC	18pF, 50WV, ±10%, Ceramic	1	
C128	ECCD1H103PF	0.01μF, 50WV, ±100%, Ceramic	1	
C129	ECCD1H102PF	0.001μF, 50WV, ±100%, Ceramic	1	
C130	ECCD1H223PF	0.022μF, 50WV, ±100%, Ceramic	1	
C131	ECCD1H223PF	0.022μF, 50WV, ±100%, Ceramic	1	
C132	ECCD1H223PF	0.022μF, 50WV, ±100%, Ceramic	1	
C133	ECCD1H150KC	15pF, 50WV, ±10%, Ceramic	1	
C134	ECCD1H103PF	0.01μF, 50WV, ±100%, Ceramic	1	
C135	ECCD1H223PF	0.022μF, 50WV, ±100%, Ceramic	1	
C136	ECEA50V3R3	3.3μF, 50WV, ±10%, Electrolytic	1	
C137	ECCD1H102PF	0.001μF, 50WV, ±100%, Ceramic	1	
C138	ECCD1H102PF	0.001μF, 50WV, ±100%, Ceramic	1	
C139	ECCD1H223PF	0.022μF, 50WV, ±100%, Ceramic	1	
C140	ECCD1H103PF	0.01μF, 50WV, ±100%, Ceramic	1	
C141	ECEA50V1	1μF, 50WV, ±100%, Electrolytic	1	

Ref. No.	Part No.	Part Name & Description	Per Set	Remarks
C144	ECEA16V100V	100μF, 16WV, Electrolytic	1	
C145	ECEA16V470V	470μF, 16WV, Electrolytic	1	
C146	ECEA35V4R7	4.7μF, 35WV, Electrolytic	1	
C147	ECQM05473KZ	0.047μF, 50WV, ±10%, Polyester	1	
C148	EQCS1471JZ	470pF, 125WV, ±5%, Styrol	1	
C149	ECEA50MR22R	0.22μF, 50WV, Electrolytic	1	
C150	ECEA50MR47R	0.47μF, 50WV, Electrolytic	1	
C151	ECCEA50MR22R	0.22μF, 50WV, Electrolytic	1	
C152	ECEA16V33	33μF, 16WV, Electrolytic	1	
C153	ECCD1H103PF	0.01μF, 50WV, ±100%, Ceramic	1	
C154	ECEA16V10	10μF, 16WV, Electrolytic	1	
C155	ECEA10V47	47μF, 10WV, Electrolytic	1	
C156	ECQM05103KZ	0.01μF, 50WV, ±10%, Polyester	1	
C157	ECQM05273JZ	0.027μF, 50WV, ±5%, Polyester	1	
C158	ECQM05273JZ	0.027μF, 50WV, ±5%, Polyester	1	
C159	ECEA35V3R3	3.3μF, 35WV, Electrolytic	1	
C160	ECEA35V3R3	3.3μF, 35WV, Electrolytic	1	
C161	ECEA50MR3R	3.3μF, 50WV, Electrolytic	1	
C162	ECEA50MR3R	3.3μF, 50WV, Electrolytic	1	
C163	ECEA50MR3R	3.3μF, 50WV, Electrolytic	1	
C164	ECEA50MR1R	1μF, 50WV, Electrolytic	1	
C165	ECEA50MR1R	1μF, 50WV, Electrolytic	1	
C166	ECEA50MR1R	1μF, 50WV, Electrolytic	1	
C167	ECEA16V47	47μF, 16WV, Electrolytic	1	
C168	ECEA35V4R7	4.7μF, 35WV, Electrolytic	1	
C169	ECQM05223KZ	0.022μF, 50WV, ±10%, Polyester	1	
C201	ECEA50MR3R	3.3μF, 50WV, Electrolytic	1	
C202	ECEA50MR3R	3.3μF, 50WV, Electrolytic	1	
C203	ECCD1H470K	47pF, 50WV, ±10%, Ceramic	1	
C204	ECCD1H470K	47pF, 50WV, ±10%, Ceramic	1	
C205	ECCD2H331KB	330pF, 50WV, ±10%, Ceramic	1	
C206	ECCD1H151K	150pF, 50WV, ±10%, Ceramic	1	
C207	ECCD1H151K	150pF, 50WV, ±10%, Ceramic	1	
C208	ECCD1H151K	150pF, 50WV, ±10%, Ceramic	1	
C209	ECQS05471JZG	470pF, 125WV, ±2%, Styrol	1	
C210	ECQF1472GZ	0.0047μF, 50WV, ±2%, Polypropylene	1	
C211	ECEA16V220V	220μF, 16WV, Electrolytic	1	
C212	ECEA16V220V	220μF, 16WV, Electrolytic	1	
C213	ECEA16V33	33μF, 16WV, Electrolytic	1	
C214	ECCD1H470K	47pF, 50WV, ±10%, Ceramic	1	
C215	ECCD1H470K	47pF, 50WV, ±10%, Ceramic	1	
C216	ECCD1H470K	47pF, 50WV, ±10%, Ceramic	1	
C217	ECQM05102JZ	0.001μF, 50WV, ±5%, Polyester	1	
C218	ECQM05102JZ	0.001μF, 50WV, ±5%, Polyester	1	
C219	ECCD2H821KB	820pF, 50WV, ±10%, Ceramic	1	
C220	ECCD2H821KB	820pF, 50WV, ±10%, Ceramic	1	
C221	ECQM05103KZ	0.01μF, 50WV, ±10%, Polyester	1	
C222	ECQM05103KZ	0.01μF, 50WV, ±10%, Polyester	1	
C223	ECEA16V33	33μF, 16WV, Electrolytic	1	
C224	ECEA16V33	33μF, 16WV, Electrolytic	1	
C225	ECQM05682JZ	0.0068μF, 50WV, ±5%, Polyester	1	
C226	ECQM05682JZ	0.0068μF, 50WV, ±5%, Polyester	1	
C227	ECEA50N1	1μF, 50WV, Non-Polar Electrolytic	1	
C228	ECEA50N1	1μF, 50WV, Non-Polar Electrolytic	1	
C231	ECEA35V4R7	4.7μF, 35WV, Electrolytic	1	
C232	ECEA35V4R7	4.7μF, 35WV, Electrolytic	1	
C501	ECQM05104KZ	0.1μF, 50WV, ±10%, Polyester	1	
C502	ECQM05104KZ	0.1μF, 50WV, ±10%, Polyester	1	
C503	ECEA50MR68R	0.68μF, 50WV, Electrolytic	1	
C504	ECEA50MR68R	0.68μF, 50WV, Electrolytic	1	

Ref. No.	Part No.	Part Name & Description	Per Set	Remarks
C505	ECCD1H100K	10pF, 50WV, ±10%, Ceramic	1	
C506	ECCD1H100K	10pF, 50WV, ±10%, Ceramic	1	
C507	ECEA35V4R7	35WV, Electrolytic	1	
C508	ECEA35V4R7	4.7μF, 35WV, Electrolytic	1	
C509	ECEA50V1	50WV, Electrolytic	1	
C510	ECEA50V1	1μF, 50WV, Electrolytic	1	
C511	ECEA16V47	47μF, 16WV, Electrolytic	1	
C512	ECEA16V47	16WV, Electrolytic	1	
C513	ECEA16V33	33μF, 16WV, Electrolytic	1	
C514	ECEA16V33	33μF, 16WV, Electrolytic	1	
C515	ECEA16N4R7	16WV, Non-Polar Electrolytic	1	
C516	ECEA16N4R7	4.7μF, 16WV, Non-Polar Electrolytic	1	
C517	ECCD2H821KB	820pF, 500WV, ±10%, Ceramic	1	
C518	ECCD2H821KB	820pF, 500WV, ±10%, Ceramic	1	
C519	ECCD2H821KB	820pF, 500WV, ±10%, Ceramic	1	
C520	ECCD2H821KB	820pF, 500WV, ±10%, Ceramic	1	
C521	ECQM05562JZ	0.0056μF, 50WV, ±5%, Polyester	1	
C522	ECQM05562JZ	0.0056μF, 50WV, ±5%, Polyester	1	
C523	ECQM05562JZ	0.0056μF, 50WV, ±5%, Polyester	1	
C524	ECQM05562JZ	0.0056μF, 50WV, ±5%, Polyester	1	
C525	ECCD1H120K	12pF, 50WV, ±10%, Ceramic	1	
C526	ECCD1H120K	12pF, 50WV, ±10%, Ceramic	1	
C527	ECCD1H180K	18pF, 50WV, ±10%, Ceramic	1	
C528	ECCD1H180K	18pF, 50WV, ±10%, Ceramic	1	
C529	ECQM05123JZ	0.012μF, 50WV, ±5%, Polyester	1	
C530	ECQM05123JZ	0.012μF, 50WV, ±5%, Polyester	1	
C531	ECQM05823JZ	0.082μF, 50WV, ±5%, Polyester	1	
C532	ECQM05823JZ	0.082μF, 50WV, ±5%, Polyester	1	
C533	ECQM05123JZ	0.012μF, 50WV, ±5%, Polyester	1	
C534	ECQM05123JZ	0.012μF, 50WV, ±5%, Polyester	1	
C535	ECQM05823JZ	0.082μF, 50WV, ±5%, Polyester	1	
C536	ECQM05823JZ	0.082μF, 50WV, ±5%, Polyester	1	
C537	ECEA50N1	1μF, 50WV, Non-Polar Electrolytic	1	
C538	ECEA50N1	1μF, 50WV, Non-Polar Electrolytic	1	
C539	ECCD2H331KB	330pF, 500WV, ±10%, Ceramic	1	
C540	ECCD2H331KB	330pF, 500WV, ±10%, Ceramic	1	
C541	ECQM05152JZ	0.0015μF, 50WV, ±5%, Polyester	1	
C542	ECQM05152JZ	0.0015μF, 50WV, ±5%, Polyester	1	
C543	ECQM05473JZ	0.047μF, 50WV, ±5%, Polyester	1	
C544	ECQM05473JZ	0.047μF, 50WV, ±5%, Polyester	1	
C545	ECQM05393JZ	0.039μF, 50WV, ±5%, Polyester	1	
C546	ECQM05393JZ	0.039μF, 50WV, ±5%, Polyester	1	
C547	ECEA50MR68R	0.68μF, 50WV, Electrolytic	1	
C548	ECEA50MR68R	0.68μF, 50WV, Electrolytic	1	
C549	ECEA50N1	1μF, 50WV, Non-Polar Electrolytic	1	
C550	ECEA50N1	1μF, 50WV, Non-Polar Electrolytic	1	
C561	ECCD1H330K	33pF, 50WV, ±10%, Ceramic	1	
C562	ECCD1H330K	33pF, 50WV, ±10%, Ceramic	1	
C601	ECEA50M1R	1μF, 50WV, Electrolytic	1	
C602	ECEA50M1R	1μF, 50WV, Electrolytic	1	
C603	ECCD2H221KB	220pF, 500WV, ±10%, Ceramic	1	
C604	ECCD2H221KB	220pF, 500WV, ±10%, Ceramic	1	
C605	ECCD2H070D	7pF, 50WV, ±0.5pF, Ceramic	1	
C606	ECCD2H070D	7pF, 50WV, ±0.5pF, Ceramic	1	
C609	ECQM05473KZ	0.047μF, 50WV, ±10%, Polyester	1	
C610	ECQM05473KZ	0.047μF, 50WV, ±10%, Polyester	1	
C611	ECCD2H270K	27pF, 500WV, ±10%, Ceramic	1	
C612	ECCD2H270K	27pF, 500WV, ±10%, Ceramic	1	
C613	ECCD2H331KB	330pF, 500WV, ±10%, Ceramic	1	

Ref. No.	Part No.	Part Name & Description	Per Set	Remarks
VARIABLE CAPACITORS				
CV1~CV6 (CT1~CT6)	ECV6MX34X15G	Tuning Gang, FM and AM (with trimmer)	1	
COMPONENT COMBINATIONS				
Z101	EXA5DL04C	FM Detector Circuit	1	
Z703, 704	RXAF103P22HD	0.01μF (X2), Rectifier Circuit	2	
LAMPS				
PL1, 2, 3 PL4	XAMR847 XAMR38S200B	Dial Lamp, 12.6V 0.08A Lamp, Stereo Indicator (6.3V 40mA)	3 1	
FUSES				
F1	XBA52A10001	10A Fuse, Primary	1	
F2	XBA1M20NU100	2A Fuse, Dial Lamp	1	
F3, 4	XBA1M10NU100	1A Fuse, Secondary	2	
SWITCHES				
S101, 102, 503, 504, 505	SSH511S	Push Switch, Delay Time, Muting Mode, AF Muting & Loudness	1	
S201	SSR63	Selector Switch, Phono Impedance	1	
S501	SSR61	Selector Switch, Input	1	
S502	SSR59	Selector Switch, Tape Monitor	1	
S506, 507, 508, 509, 510	SSH319S	Push Switch, Turnover & Tone Defeat	1	
S1001	SSH227S	Push Switch, High & Low Filter	1	
S1002	SSHA5760M-1 SSH223S	Push Switch, Power (with Button) Push Switch, Speakers	1 1	
RELAYS				
RLY101 RLY601	SSY9 SSY15	Relay, Muting Relay, Speaker Protection	1 1	
METERS				
	SSM77 SSM79	Meter, Signal Meter, Tuning	1 1	
CABINET and CHASSIS PARTS				
1	XTS3+8CFZ	Screw, Panel M'tg	2	
2	XTB3+8BFZ	Screw, Panel, Dial Light Plate & Bottom Board M'tg	28	
3	SYW29	Panel, Front	1	
4	SGX6461	Sleeve, Push Switch Buttons	3, 2/3	
5	SGX6455	Sleeve, Push Switch Buttons	1	
6	SGX6457	Ornament, Front Panel	2	
7	SGU17	Glass Plate, Front Panel	1	
8	SBN593	Knob, Bass Treble Balance, Tape Monitor, Selector & Impedance Switch	6	
9	SBN585-1	Knob, Volume	1	
10	SBN591	Knob, Tuning	1	
11	SBC149	Button, Push Switches	12	
12	SHGA703	Rubber Bushing, Push Switch Buttons	10	

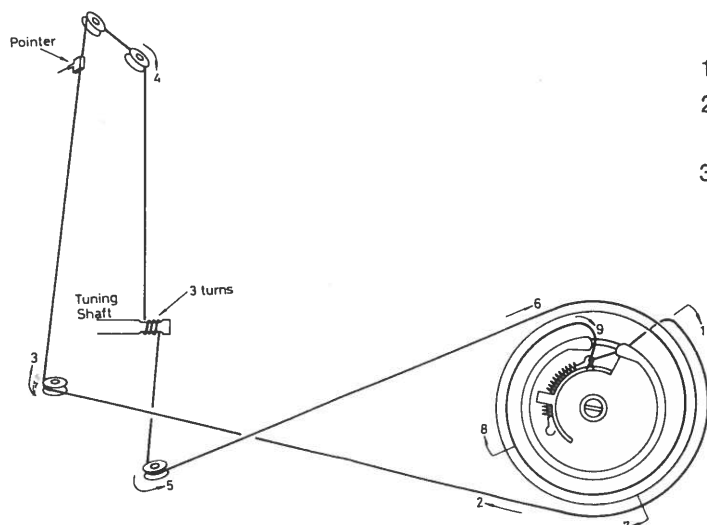
Ref. No.	Part No.	Part Name & Description	Per Set	Remarks
C614	ECKD2H331KB	330pF, 500WV, ±10%, Ceramic	1	
C615	ECKD1H102KB	0.001μF, 50WV, ±10%, Ceramic	1	
C616	ECKD1H102KB	0.001μF, 50WV, ±10%, Ceramic	1	
C617	ECQM05183KZ	0.018μF, 50WV, ±10%, Polyester	1	
C618	ECQM05183KZ	0.018μF, 50WV, ±10%, Polyester	1	
C619	ECKD2H331KB	330pF, 500WV, ±10%, Ceramic	1	
C620	ECKD2H331KB	330pF, 500WV, ±10%, Ceramic	1	
C621	ECQM05183KZ	0.018μF, 50WV, ±10%, Polyester	1	
C622	ECQM05183KZ	0.018μF, 50WV, ±10%, Polyester	1	
C623	ECCD2H270K	27pF, 500WV, ±10%, Ceramic	1	
C624	ECCD2H270K	27pF, 500WV, ±10%, Ceramic	1	
C625	ECCD2H270K	27pF, 500WV, ±10%, Ceramic	1	
C626	ECCD2H270K	27pF, 500WV, ±10%, Ceramic	1	
C627	ECQM1473KZ	0.047μF, 125WV, ±10%, Polyester	1	
C628	ECQM1473KZ	0.047μF, 125WV, ±10%, Polyester	1	
C629	ECEA25V33	33μF, 25WV, Electrolytic	1	
C630	ECEA25V33	33μF, 25WV, Electrolytic	1	
C631	ECEA100V100V	100μF, 100WV, Electrolytic	1	
C632	ECEA100V47V	47μF, 100WV, Electrolytic	1	
C633	ECQM05392JZ	0.0039μF, 50WV, ±5%, Polyester	1	
C634	ECQM05392JZ	0.0039μF, 50WV, ±5%, Polyester	1	
C701	ECQM2104KZ	0.1μF, 500WV, ±10%, Polyester	1	
C702	ECM80R223Z	22000μF, 80WV, Electrolytic	1	
C703	ECM80R223Z	22000μF, 80WV, Electrolytic	1	
C704	ECEA63V470V	470μF, 63WV, Electrolytic	1	
C705	ECEA63V470V	470μF, 63WV, Electrolytic	1	
C706	ECEA63V47V	47μF, 63WV, Electrolytic	1	
C707	ECEA63V47V	47μF, 63WV, Electrolytic	1	
C708	ECEA50V47V	47μF, 50WV, Electrolytic	1	
C709	ECEA50V47V	47μF, 50WV, Electrolytic	1	
C710	ECEA25V220V	220μF, 25WV, Electrolytic	1	
C711	ECEA16V33	33μF, 16WV, Electrolytic	1	
C712	ECEA16V470V	470μF, 16WV, Electrolytic	1	
C713	ECEA50V220V	220μF, 50WV, Electrolytic	1	
C714	ECEA50V220V	220μF, 50WV, Electrolytic	1	
C715	ECKD1H103PF	0.01μF, 50WV, ±100%, Ceramic	1	
C716	ECKD1H103PF	0.01μF, 50WV, ±100%, Ceramic	1	
C717	ECEA10N220V	220μF, 10WV, Non Polar Electrolytic	1	
C718	ECEA10V100V	100μF, 10WV, Electrolytic	1	
C719	ECEA10V100V	100μF, 10WV, Electrolytic	1	
C720	ECEA25V220V	220μF, 25WV, Electrolytic	1	
C721	ECEA25V220V	220μF, 25WV, Electrolytic	1	
C722	ECEA25V100V	100μF, 25WV, Electrolytic	1	
C723	ECEA16V220V	220μF, 16WV, Electrolytic	1	
C724	ECEA35V100V	100μF, 35WV, Electrolytic	1	
C725	ECEA50V100V	100μF, 50WV, Electrolytic	1	
C726	ECEA50V100V	100μF, 50WV, Electrolytic	1	
C727	ECKD2H103PF	0.01μF, 500WV, ±10%, Ceramic	1	
C728	ECKD2H103PF	0.01μF, 500WV, ±10%, Ceramic	1	
C729	ECKD2H103PF	0.01μF, 500WV, ±10%, Ceramic	1	
C730	ECKD2H103PF	0.01μF, 500WV, ±10%, Ceramic	1	
C731	ECKD1H103PF	0.01μF, 50WV, ±10%, Ceramic	1	
C732	ECKD1H103PF	0.01μF, 50WV, ±10%, Ceramic	1	
C733	ECEA35V220V	220μF, 35WV, Electrolytic	1	
C740	ECKD1H103PF	0.01μF, 50WV, ±10%, Ceramic	1	
C801	ECOM1473M	0.047μF, 125WV, ±20%, Polyester	1	
C802	ECOM1473M	0.047μF, 125WV, ±20%, Polyester	1	
C1001 [M]	ECQU1A103MD	0.01μF, 125VAC, ±20%, Polyester	1	
C1002 [M]	ECQU1A103MD	0.01μF, 125VAC, ±20%, Polyester	1	
C1001 [MC]	ECQU1A103MC	0.01μF, 125VAC, ±20%, Polyester	1	
C1002 [MC]	ECQU1A103MC	0.01μF, 125VAC, ±20%, Polyester	1	

Ref. No.	Part No.	Part Name & Description	Per Set	Remarks
69	SJPA11	Short P.n. PHONO 2 Terminal Accessory	2	
70	SNE63	Sleeve, Cabinet Screw	1	O
ACCESSORY				
A1	SSA251	Cord, FM Feeder Antenna	1	
PACKING PARTS				
P1	SPP491	Soft Cover	1	
P2	SPHA6008	Polyethylene Sheet, Set	1	
P3	SPS907	Pad, Left Side, Upper	1	O
P4	SPS903	Pad, Left Side, Lower	1	O
P5	SPS909	Pad, Right Side, Upper	1	O
P6	SPS905	Pad, Right Side, Lower	1	O
P7	SPS957	Pad, Top Side	1	O
P8 [M]	SPG955	Carton Box	1	O
P8 [MC]	SPG957	Carton Box	1	O
P9 [M]	SQF1527	Printed Matter	1	O
P9 [MC]	SQF1529	Printed Matter	1	O

● The model SA-5770(M) is available in America only.
 ● The model SA-5770(MC) is available in Canada only.

Ref. No.	Part No.	Part Name & Description	Per Set	Remarks
13	SHG1339	Rubber Bushing, Push Switch Buttons	2	
14	XWV8	Spring Washer, Bass, Treble & Volume	3	
15	XNS8	Nut, Bass, Treble & Volume M'tg	3	
16	XWV7	Spring Washer, Balance, Tape Monitor, Selector & Impedance Switch	4	
17	XNS7	Nut, Balance, Tape Monitor, Selector & Phono Impedance Switch M'tg	4	
18	XCJ6N11B-A	Jack, Headphones	1	
19	SHRA919	Clip, Indicator P. C. B. M'tg	2	
20	SXE721	Shaft, Dial Pulley Ass'y	1	
21	RDR20	Pulley, Dial Cord	4	
22	RNW150-2	Lock Washer, Pulley	4	
23	QTF1046	Holder, Fuse	1	
24	SBW9007	Metal Clamp, Relay M'tg	1	
25	SBW33	Magnet	2	
26	SHG1349	Rubber Cushion, Relay	1	
27	SJT331	Pin Clamp, Protection P. C. B.	1	
28	SJS6601	Socket, P. C. B. Connector	5	
29	SHGA204	Rubber Bracket, Stereo Indicator	1	
30	SXE719	Shaft, Dial Pulley Ass'y	1	
31	SDTB009-1	Shaft, Tuning	1	*
	SDX753S	Flywheel, Tuning	1	
32	XXAS3K5S	Screw, Flywheel M'tg	2	
33	SJS5307	Socket, 3 pcs. Lead Wire	4	
34	SJS5505	Socket, 5 pcs. Lead Wire	4	
35	SJS5603	Socket, 6 pcs. Lead Wire	1	
36	SDD47-1	Drum, Dial Cord	1	
37	SDS4121	Spring, Dial Cord	1	O
38	SDH329-3	Plate, Dial Light & Meter M'tg	1	*
39	SGM10-2	Orange Filter, Stereo Indicator	1	*
40	RHG109	Bracket, Meter	1	
41	XTV3+6C	Rubber Cushion, Meter	2	
42	SHRA916-1	Screw, Meter Bracket M'tg	1	
43	SKD2610	Clip, Dial Scale M'tg	2	
44	SUM11-1	Scale, Dial	1	*
45	SDZ061-1	Bracket, Dial Scale	1	*
46	SHPA4	Cord, Dial 90°/5/8" (230cm)	1 roll	
47	SDP1099	Paper, Dial Pointer Slide	1	
48	RJF107-2	Pointer, Dial	1	*
49	SHRA2	Holder, Dial Lamp	6	
50	SKX219-1	Spacer, Drive Amplifier P.C.B. M'tg	2	
51	XTV3+16C	Foot, Bottom Board	4	
52	SKU5810	Screw, Foot M'tg	4	
53	SJF5801	Bottom Board	1	
54	SJF3101	Terminal, Speakers	1	*
55	SJF3017	Terminal, 4ch. MPX Output	1	
56	SJF4503	Terminal, Input & Tape Deck	1	
		Terminal, Antenna	1	
58	SMA207	Holder, AM Antenna Coil	1	*
59	SMA205	Holder, AM Antenna Coil	1	*
60	SHR401-1	Clip, Terminal & P. C. B. M'tg	12	
61 [M]	SGP352C	Rear Panel	1	O
61 [MC]	SGP352D	Rear Panel	1	O
63	SHRA108	Bushing, AC Cord	1	
64	XTB4+35FFZ	Screw, Cabinet M'tg	4	
65	XWG5FZ	Washer, Cabinet Screw	4	
65-1	XWA4BFZ	Washer, Spring, Cabinet Screw	4	
66	SOXA4112	Label, Caution	1	
67	QOC1045	Label, Cabinet	1	
68	SKA9110W	Cabinet, Simulateb. Wood	1	O

I DIAL CORD INSTALLATION GUIDE

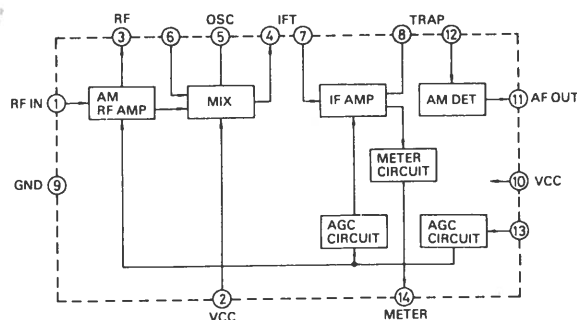


1. Dial cord length is $90 \frac{5}{8}$ " (230cm).
2. Tuning gang is positioned at maximum capacity.
(Frequency is minimum)
3. Arrow marks (1 ~ 9) indicated correct order and direction of stringing dial cord.

II BLOCK DIAGRAM OF INTEGRATED CIRCUITS

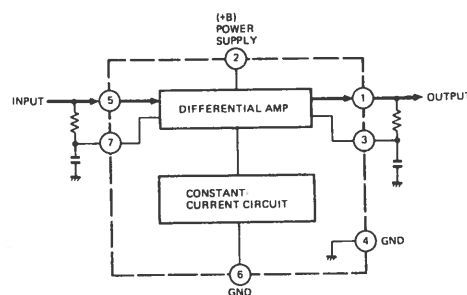
● IC 1 (SVIHA1151)

AM RF, IF Amplifier & Detector Circuit

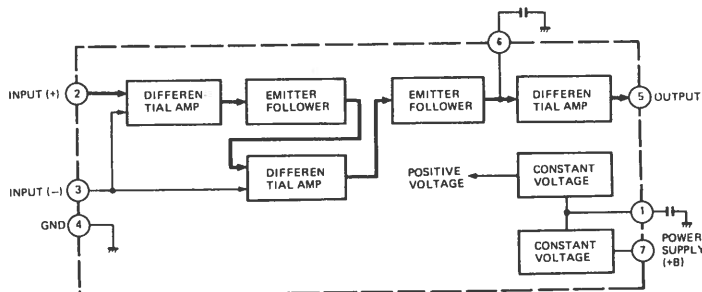


● IC101, 102(SVIAUPC555)

FM IF Amplifier Circuit



● IC103(SVIAUPC577) FM IF 3 steps Amplifier Circuit



● IC104(SVIHA1156)

FM Multiplex Circuit

