

## ALIGNMENT INSTRUCTION

### AM

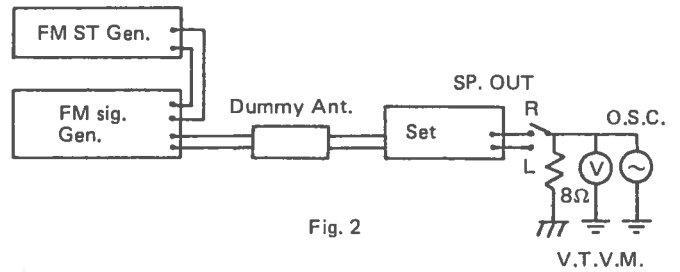
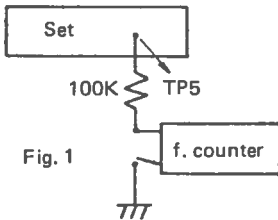
STEP	SIGNAL GENERATOR		RECEIVER		ADJUST
	CONNECTION TO RECEIVER	INPUT SIGNAL FREQUENCY	DIAL SETTING	RECEIVER	
1	SIGNAL GEN. Signal to AM ANT 5. Fig. 1.	455KHz 450, 455, 460KHz Markers	Tuning gang fully closed. (Max. capacity)	Max. gain with symmetrical curve, centered at 455KHz (TP-2)	T5 T6 T8
2	SIGNAL GEN. Loop or piece of wire placed near AM antenna. Fig. 2	525KHz 30% AM modulated	Tuning gang fully closed. (Max. capacity)	Adjust for max. output on out- put meter.	T4
3	Same as step 2	1650KHz 30% AM modulated	Tuning gang fully opened. (Min. capacity)	Same as step 2	TC1
4	Same as step 2	600KHz 30% AM modulated	600KHz(Tuning)	Same as step 2	L8
5	Same as step 2	1400KHz 30% AM modulated	1400KHz (Tuning)	Same as step 2	TC2
6	Repeat step 2, 3, 4 and 5 until no further improvement is obtained.				

### FM

STEP	SIGNAL GENERATOR		RECEIVER		ADJUST
	CONNECTION TO RECEIVER	INPUT SIGNAL FREQUENCY	DIAL SETTING	RECEIVER	
1	IF sweep & marker generator to FM ant. terminal. Fig. 3.	10.7MHz 10.55, 10.70, 10.85MHz Markers	Tuning gang fully closed. (Max. capacity)	Max. gain with symmetrical curve, centered at 10.7MHz (TP3)	T3 T7
				Symmetrical "S" curve cen- tered at 10.7 MHz (TP4)	T9 T10
2	SIGNAL GEN. Loosely coupled to FM external terminal Fig. 4.	86.5MHz 30% FM modulated	Tuning gang fully closed. (Max. capacity)	Adjust for max. output on out- put meter.	L6, 7
3	Same as step 2	110MHz 30% FM modulated	Tuning gang fully opened. (Min. capacity)	Same as step 2	TC-3
4	Same as step 2	90MHz 30% FM modulated	90MHz(Tuning)	Same as step 2	L3, 4
5	Same as step 2	106MHz 30% FM modulated	106MHz(Tuning)	Same as step 2	TC4
6	Repeat step 2, 3, 4 and 5 until no further improvement is obtained.				

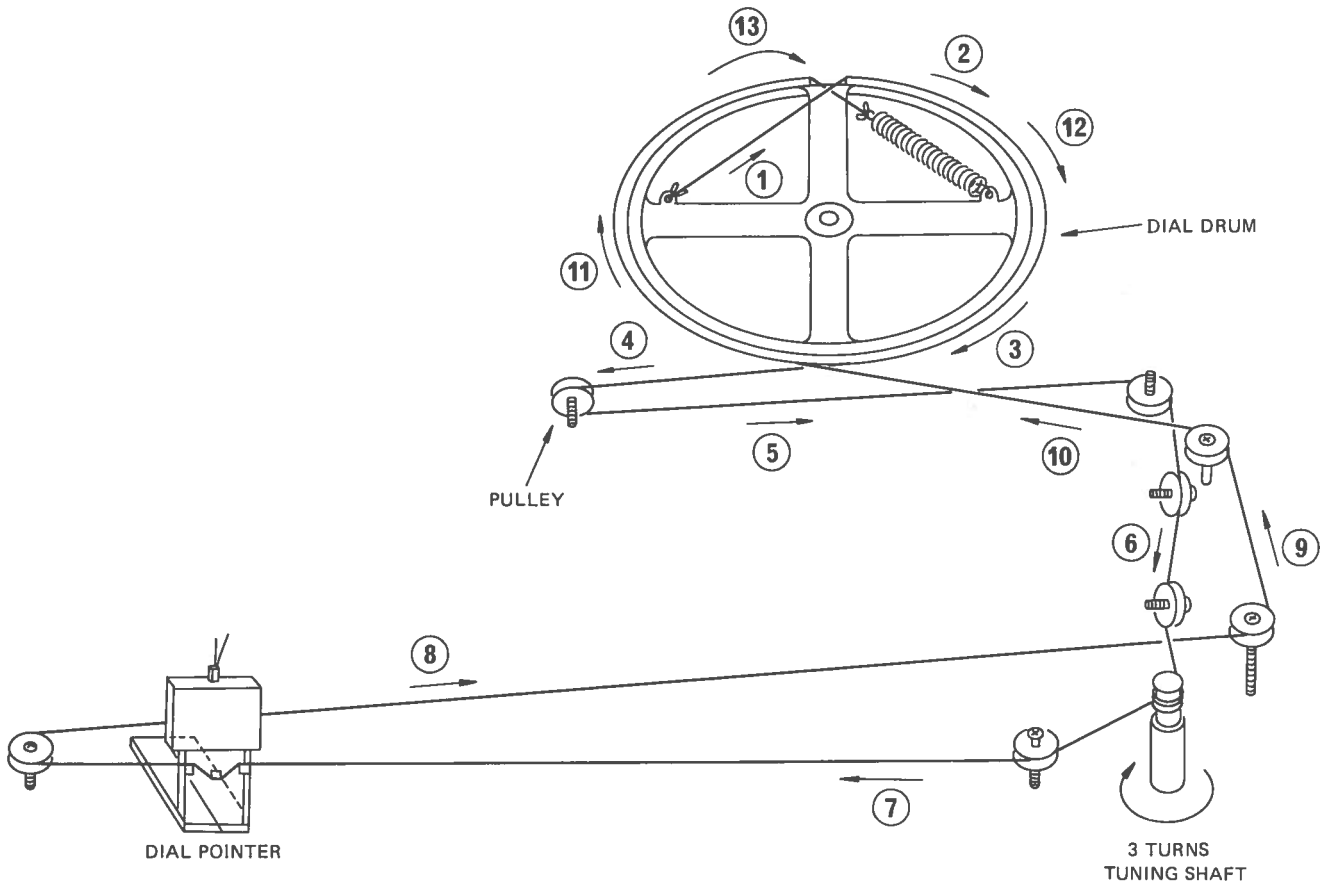
## FM STEREO

Alignment On	Signal Generator Frequency	Radio Dial Setting	Connection	Adjustment	Remarks	Step
19KHz	No input Signal	No Station	See fig. 1	VR2	Adjust for 19KHz	1
Separation (R)	98MHz Input 1mV Stereo Mod (1KHz) 30% R channel	98MHz	See fig. 2	VR1	Adjust for Minimum deflection of left ch.	2
Separation (L)	Same as in step 2 but Left channel	98MHz		VR1	Adjust for Minimum deflection of right ch. Repeat step 2 and 3	3

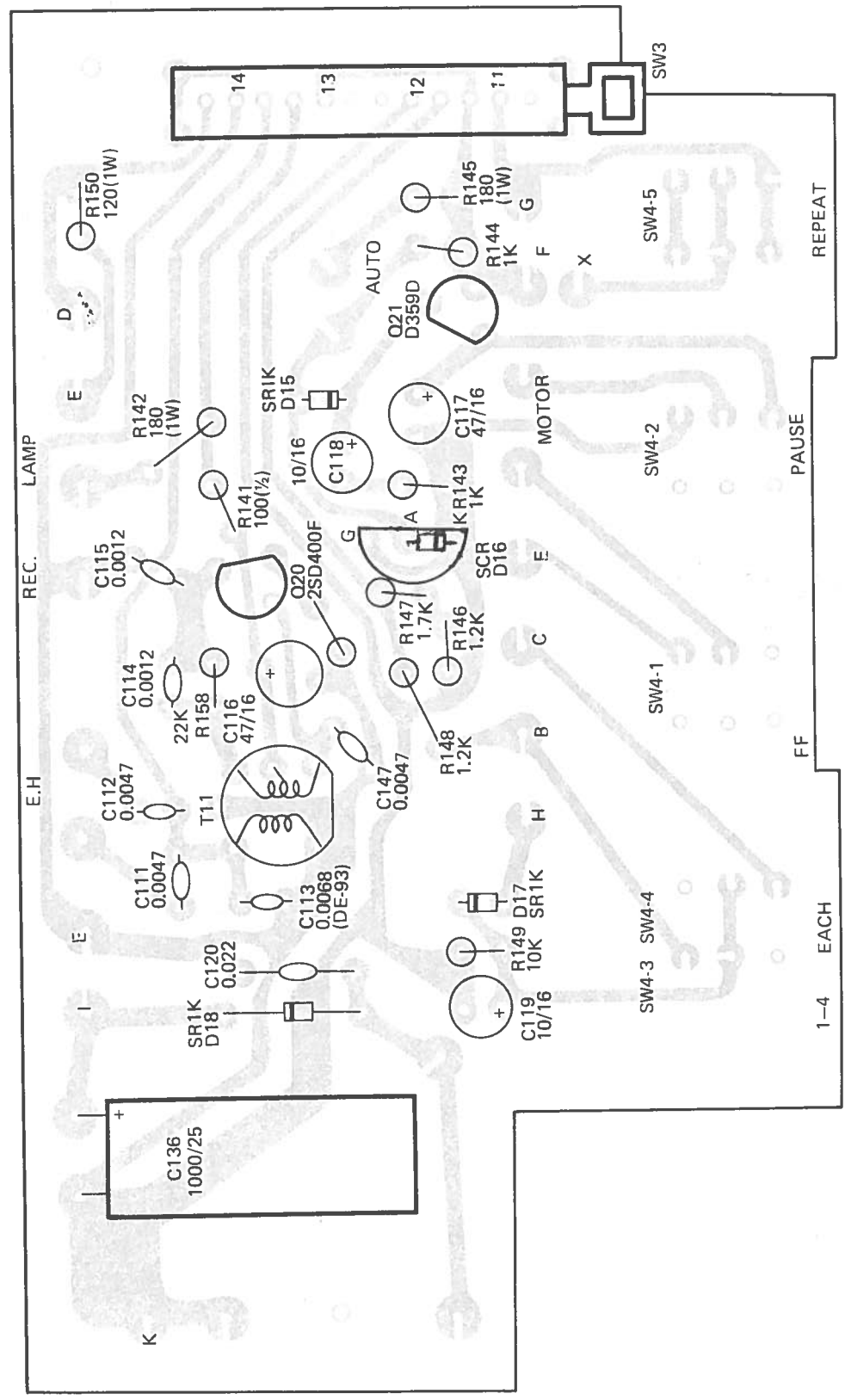


## DIAL STRINGING

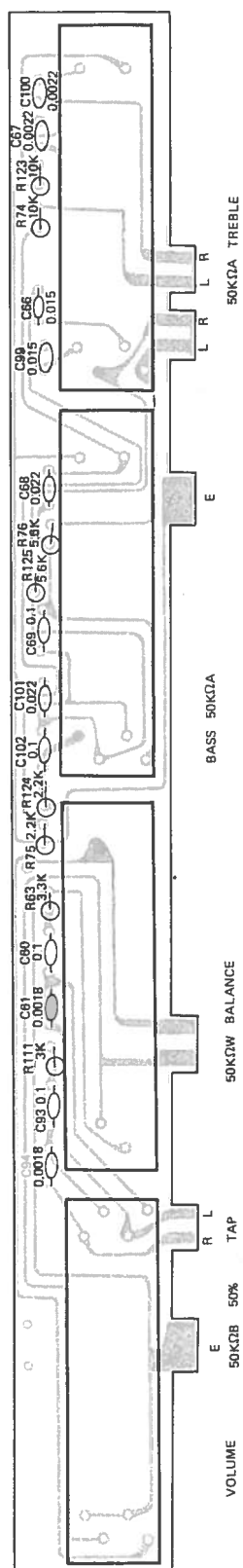
TUNING GANG FULLY CLOSED



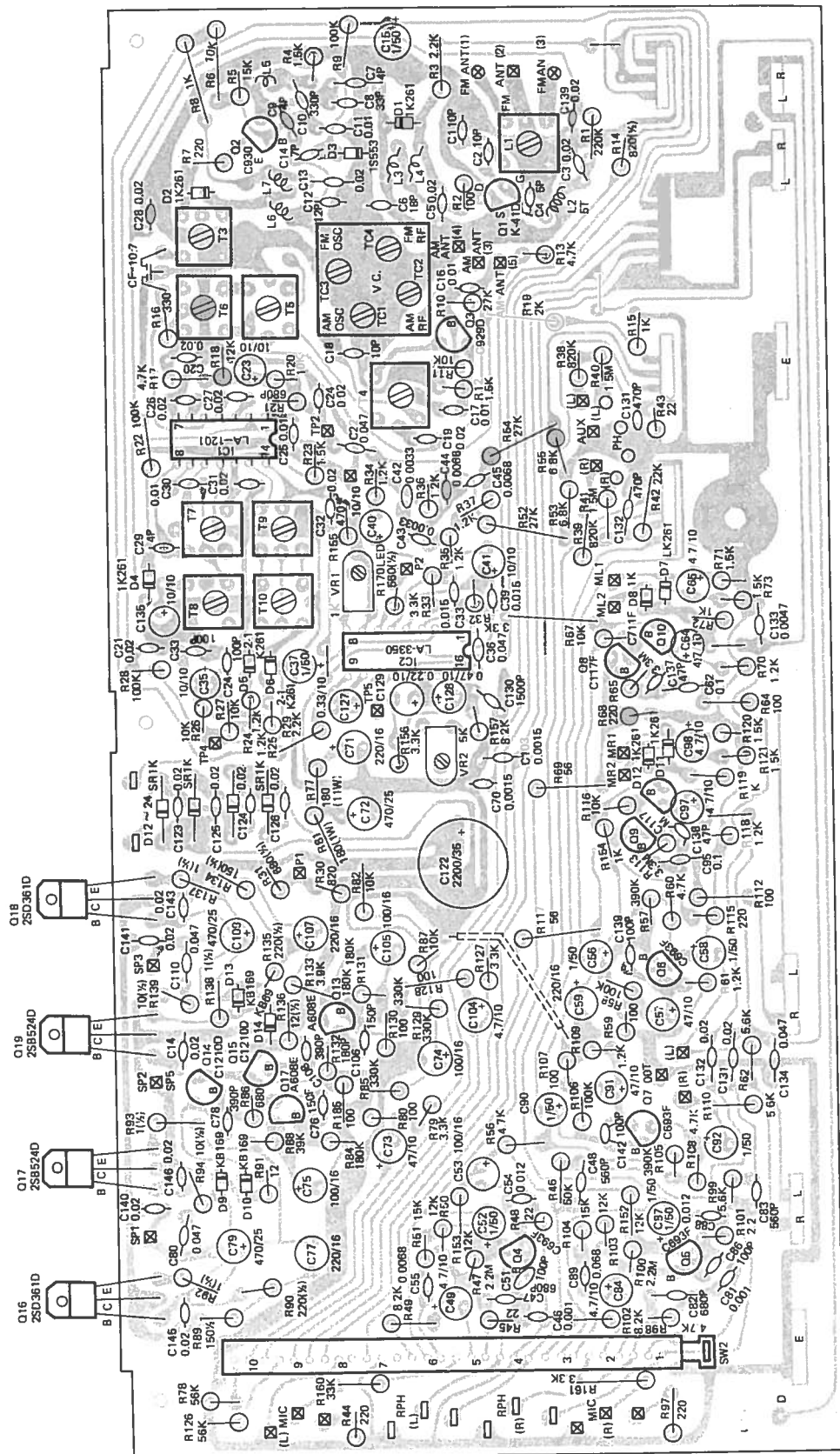
REC. SECTION P.C.B.

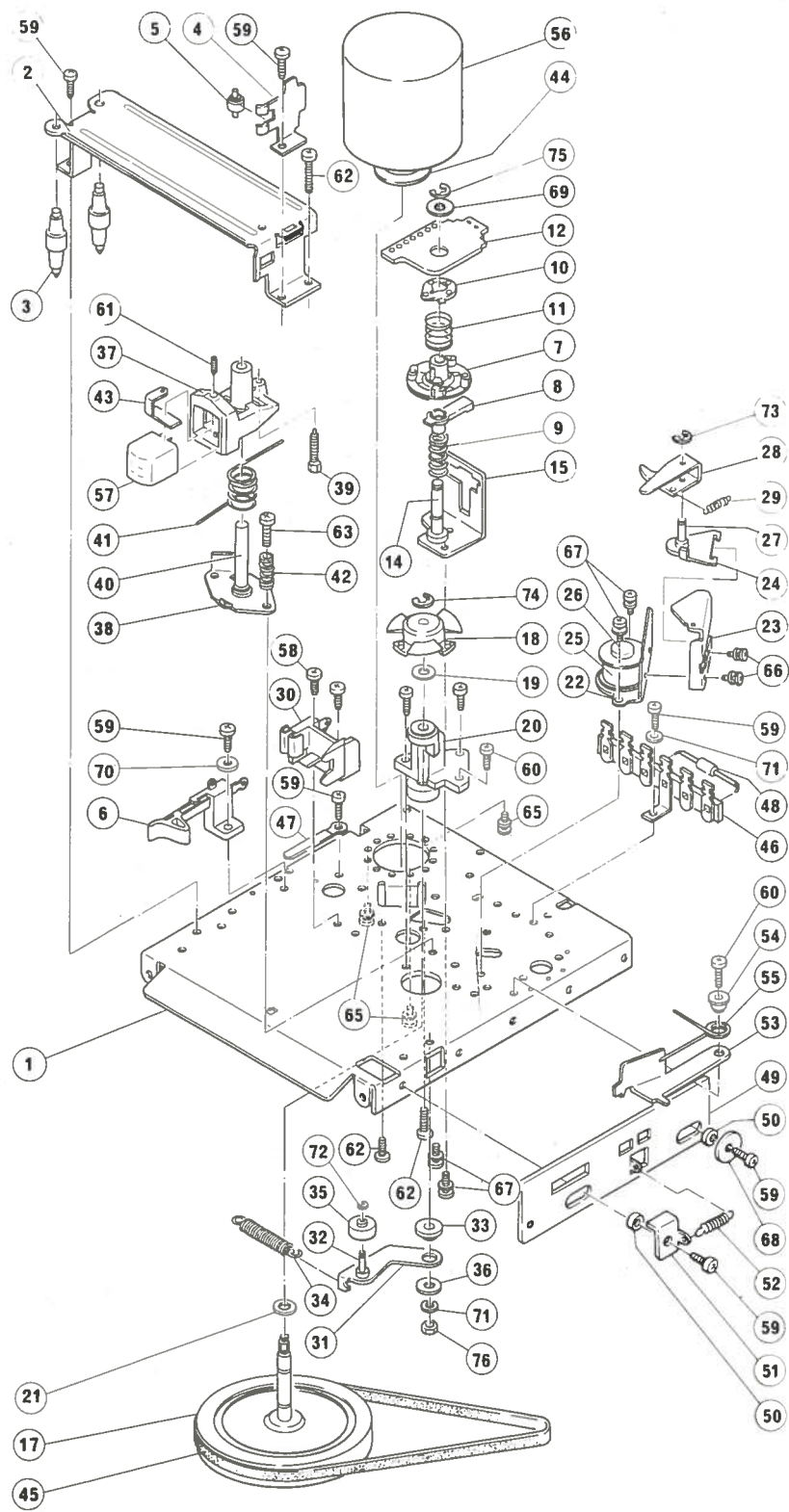


**TONE SECTION P.C.B.**



## MAIN SECTION P.C.B.





**TAPE DECK PARTS LIST**

REF. NO.	SUPPLIER PART NO.	DESCRIPTION	REF. NO.	SUPPLIER PART NO.	DESCRIPTION
1	5600101	CHASSIS	44	1510910	MOTOR PULLEY
2	1510102B	PACK COVER	45	5610902	BELT
3	110202C	PACK ROLLER	46		LUG TERMINAL 3ℓ2
4	5600104	PACK HOLDER	47	4660901	CORD CLAMP (E)
5	5600105	PACK HOLD ROLLER	48		DIODE
6	5600106	LEAF SWITCH	49	9551201	RECORD LEVER
7	5600212	4 CAM	50	1151206	RECORD LEVER COLLAR
8	5600213	RATCHET CAM	51	3171206	SPRING HOLDER
9	090807	CAM SPRING	52	431103	KICK LEVER SPRING
10	5600204	INDICATOR CONTACT	53	4911202	RECORD PUSH ARM
11	5600205	CONTACT SPRING	54	4911203	RECORD PUSH COLLAR
12	5600210	INDICATOR P.C. BOARD	55	4911204	RECORD PUSH ARM SPRING
13			56		MOTOR
14	1510223	CAM SHAFT	57		HEAD
15	5600211	CAM BASE	58		TAPPING SCREW M3 x 5
16			59		TAPPING SCREW M3 x 6
17	1510301B	FLYWHEEL & CAPSTAN	60		TAPPING SCREW M3 x 8
18	5600303	CHANGE CAM	61		SET SCREW M2.6 x 8
19	1510303	THRUST WASHER	62		SCREW M3 x 6
20	5600304	FLYWHEEL METAL	63		SCREW M3 x 10
21	1510305	F WASHER	64		SCREW M3 x 12
22	5600401	YOKE A	65		TAMS SCREW M2.6 x 4
23	5600402	YOKE B	66		TAMS SCREW M2.6 x 5
24	1510422B	SWITCHING IRON	67		TAMS SCREW M3 x 5
25	5600405	COIL	68		WASHER 3φ x 14φ x 1t
26	1510423	CENTER POLE	69		WASHER M4
27	5600406	CHANGE LEVER SHAFT	70		WASHER M3
28	5600407	CHANGE LEVER	71		SPRING WASHER M3
29	5600408	CHANGE LEVER SPRING	72		E RING 1.5
30	5600500	TAPE GUIDE ASSEMBLY	73		E RING 2.3
31	5600601	PRESSURE ROLLER ARM	74		E RING 2
32	1510602	PRESSURE ROLLER SHAFT	75		E RING 3.2
33	5600603	ARM METAL	76		NUT M3
34	5600604	PRESSURE ROLLER ARM SPRING			
35	110305	ROLLER			
36	2030606	WASHER			
37	5600801	HEAD HOUSING			
38	5600802	HEAD BASE			
39	1510804	ADJUST SCREW			
40	1510806	MAIN SHAFT			
41	5600807	HEAD SUPPORT SPRING			
42	110608	HEAD (VERTICAL) ADJUSTMENT SPRING			
43	3470801	EARTH PLATE			

## SERVICE HINTS

### (TAPE DECK)

Trouble	Cause	Remedy
Power is not present	Power switch is faulty	Replace switch check the power supply circuits.
Indicator lamp will not light up.	Pilot lamp is burned out	Replace pilot lamp.
	Ratchet cam contact point is in imperfect contact with disc contact point.	Clean both contact points surface with a cleaner.
No sound is reproduced	Motor is faulty.	Replace motor.
	Cartridge is faulty.	Check by using a new cartridge.
	Signal wire is broken.	Check head lead wire. Check soldered joints. Check connectors and jacks.
	Amplifier is faulty.	Check for voltage of circuit board by using a tester.
Tape speed is incorrect	Noter is faulty.	Replace motor
	Cartridge is faulty	Check by using a new cartridge.
	Pinch roller pressure is weak.	Check pressure and read just it.



**ELECTRICAL PARTS LIST**

Ref. No.	Parts No.	Description	Q'ty
	S04P006-B	Main Board Ass'y	1
IC1		IC LA-1201	1
IC2		IC LA-3350	1
Q1		Transistor 2SK41D	1
Q2		Transistor 2SC930E	1
Q3		Transistor 2SC929D	1
Q4~7		Transistor 2SC693F	4
Q8,9		Transistor 2SC711E	2
Q10,11		Transistor 2SC711F	2
Q12,13		Transistor 2SA608E	2
Q14,15		Transistor 2SC1210D	2
Q16,18		Transistor 2SD361D	2
Q17,19		Transistor 2SB524D	2
D1,2,4,7,8, 11,12		Diode 1K261	7
D3		Diode 1S553	1
D5,6		Diode 2-1K261	2
D9,10,13, 14		Diode KB-169	4
D21~24		Diode SR1K-2	4
L1	S01P018-A 1/2~2/2	Coil LA-001FM (FM ANT)	1
L2	S02P013-A	Coil (FM ANT)	1
L3,4	S01P021-B	Coil L-005 (FM RF)	2
L5	S01P020-B	Coil L-003 (IF TRAP)	1
L6,7	S02P012-B	(FM OSC.)	2
T4	S02P003-A	Coil 44M172 (AM OSC.)	1
T3	S01P007-A	IFT 92K542 (FM 1ST)	1
T6	S01P004-A	IFT 194A (AM 1ST)	1
T5	S01P005-A	IFT 194B (AM 1ST)	1
T7	S01P008-B	IFT 30T-814 (FM 2ND)	1
T8	S01P006-A	IFT HAS311 (AM 2ND)	1
T9	S01P009-A	IFT SB127 (FM DET)	1
T10	S01P010-A	IFT SB128 (FM DET)	1
CF		Ceramic Filter SFE10.7MA5-2	1
SW2		Switch CL-110B	1
V.C		Poli-variable condenser CB41C	1
VR1		Semi-Fixed Resistor FR-085 1KΩB	1
VR2		Semi-Fixed Resistor FR-085 5KΩB	1

Ref. No.	Parts No.	Description	Q'ty
C4		Ceramic condenser 5pF	1
C2,7,9,29		Ceramic condenser 4pF	4
C14		Ceramic condenser 7pF	1
C1,18		Ceramic condenser 110pF	2
C12		Ceramic condenser 112pF	1
C6		Ceramic condenser 18pF	1
C8		Ceramic condenser 33pF	1
C33,34,51, 86,139,142		Ceramic condenser 100pF	6
C76,106		Ceramic condenser 150pF	2
C10		Ceramic condenser 330pF	1
C78,108		Ceramic condenser 390pF	2
C131,132		Ceramic condenser 470pF	2
C47,82		Ceramic condenser 680pF	2
C11,16,17, 25,30		Ceramic condenser 0.01μF	5
C3,5,13, 19~21, 26~28,31, 32,123~ 126,139~ 141,143~ 146		Ceramic condenser 0.022μF	22
C22,36,80 110,133, 134		Ceramic condenser 0.047μF	6
C137,138		Ceramic condenser 47pF	2
C48,83		Ceramic condenser 560pF ±20%	2
C62,95		Ceramic condenser 0.1μF 25V	2
C54,88		Mylar condenser 0.012μF	2
C38,39		Mylar condenser 0.015μF	2
C24,131, 132		Mylar condenser 0.022μF	3
C46,81		Mylar condenser 0.001μF	2
C70,103		Mylar condenser 0.0015μF	2
C42,43		Mylar condenser 0.0033μF	2
C44,45,55, 89		Mylar condenser 0.0068μF	4
C129		Almi. condenser 0.22μ 16V	1
C127		Almi. condenser 0.33μ 16V	1
C128		Almi. condenser 0.47μ 16V	1
C15,37,52, 56,58,87, 90,92		Elec. Condenser 1μ 50V	18
C49,64,73, 84,97,104		Elec. condenser 4.7μ 10V	6
C23,35,40, 41,135		Elec. condenser 10μ 10V	5
C57,65,91, 98		Elec. condenser 47μ 10V	4
C53,74,75, 105		Elec. condenser 100μ 16V	4
C59,71,77, 107		Elec. condenser 220μ 16V	4
C72,79, 109		Elec. condenser 470μ 25V	3
C122		Elec. condenser 2200μ 35V	1
C130		Styrol condenser 1500pF 25V	1

Ref. No.	Parts No.	Description	Q'ty
	S04P005-D 1/2~2/2	Recording Board Ass'y	1
Q20		Transistor 2SD400F	1
Q21		Transistor 2SD359(D) (E)	1
D16		SCR CR02AM-4	1
D15,17,18		Diode SR1K-2	3
T11	S02P001-A	Coil S02P001-A 191002 (Tape Bias Osc. Coil)	1
SW3		Switch CL-104B	1
SW4		Switch SUB-54	1
R150		Resistor 120Ω 1W	1
R142,145		Resistor 180Ω 1W	2
R141		Resistor 100Ω 1/2W	1
R140		Resistor 3.9Ω 1/4W	1
R143,144		Resistor 1KΩ	2
R146,147, 148		Resistor 1.2KΩ 1/4W	3
R149		Resistor 10KΩ 1/4W	1
R158		Resistor 22KΩ 1/4W	1
C120		Ceramic condenser 0.022μF	1
C111,112 147		Ceramic condenser 0.0047μF	3
C114		Mylar condenser 0.012μ	1
C115		Mylar condenser 0.0012μ	1
C113		Mylar condenser 0.0068μ (DE-93)	1
C118,119		Elec. condenser 10μ 16V	2
C116,117		Elec. condenser 47μ 16V	2
C136		Elec. condenser 1000μ 25V	1

Ref. No.	Parts No.	Description	Q'ty
	S04P004-A	Tone Board Ass'y	1
VR3		Volume MEE4B 50K(B)	1
VR4		Volume Balance LEE4R 50K(W)	1
VR5		Volume Treble MEE4R 50K(A)	1
VR6		Volume Bass MEE4R 50K(A)	1
R75,124		Transistor 2.2KΩ 1/4W	2
R63,111		Transistor 3.3KΩ 1/4W	2
R76,125		Transistor 5.6KΩ 1/4W	2
R74,123		Transistor 10KΩ 1/4W	2
C60,69,93, 102		Mylar condenser 0.1μF	4
C66,99		Mylar condenser 0.015μF	2
C68,101		Mylar condenser 0.022μF	2
C61,94		Mylar condenser 0.0018μF	2
C67,100		Mylar condenser 0.0022μF	2
	S04P001-A	Lamp Board	1
	S04P002-A	L.E.D. Board	1
	S04P003-A	Function board	1
D25		Diode L.E.D LN-25D	1
D19		Diode SR1K-2	1
R95,96		Resistor 270Ω 1/4W	2
R151		Resistor 2.2MΩ 1/2W	1
C121		Ceramic condenser 0.022μF	1
T12		Trans. 77063-1 (Power)	1
SW6		Switch 1623060 (Program)	1
SW5		Switch ESB-703T (Power)	1
SW1		Switch SRZU-065S (Function)	1
		Headphone jack WJ-316	1
		Mic. Jack JM3502	2
		T-Shaped Ant. 5 feet x 6 feet	1
		Bar Ant. (AM Ant. W/BAR)	1
	S02P002-A S01P022-A	#134483	1
		Lamp 6.3V 150 MA (Fuse type) (Dial)	1
		Lamp 6.3V 60MA (Red, Red) Auto-stop)	1
		Lamp 6.3V 60MA (Green, Green) (Rec.)	1
		Lamp 6.3V 60MA (Blue, Red) (Program)	1
		Lamp 6.3V 60MA (Blue, Blue) (Program)	1
		Lamp 6.3V 60MA (Blue, Yellow) (Program)	1
		Lamp 6.3V 60MA (Blue, Green) (Program)	1
		Lamp 6.3V 30MA	1

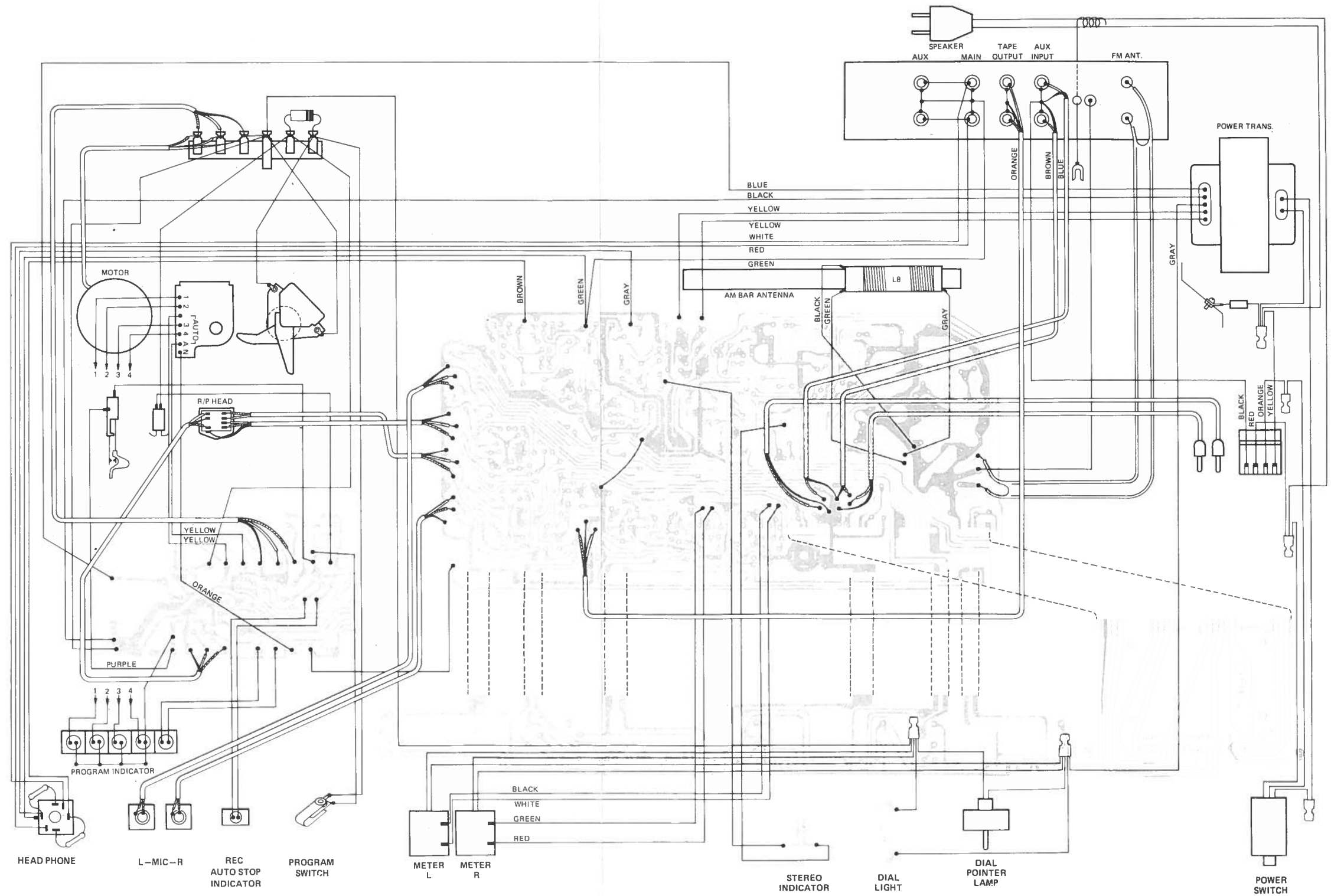
# MECHANICAL PARTS LIST

## Soundesign 5762 Tanglewood 57T05

Parts No.	Description	Q'ty
S04M030-B	Plastic Front panel (Soundesign)	1
	Plastic Front panel (Tanglewood)	
S04M037-A	Plastic Tuning Knob	1
S04M036-A	Plastic Tuning Knob and Cap	1
S04M040-B	Plastic Function Knob	1
S04M038-A	Plastic Power Knob	1
S04M034-B	Plastic Push Knob	5
S04M044-A	Plastic Program Knob	1
S04M046-B	Plastic Record Knob	1
S04M042-A	Plastic Slide Knob	4
S04M033-A	Plastic Slide Knob Window	4
S04M035-A	Plastic Dial cover	1
S04M047-A	Plastic Dial Back Board (Soundesign)	1
	Plastic Dial Back Board (Tanglewood)	1
S04M017-A	Plastic Dial Plate (Soundesign)	1
	Plastic Dial Plate (Tanglewood)	1
S02M009-C	Plastic Dial Drum	1
	Plastic Dial Pulley	8
S04M003-B	Plastic Power Sw. Cover	1
S04M041-A	Plastic 8 door	1
S04M045-A	Plastic Pointer	1
S04M039-B	Plastic Channel Lamp Cover Yellow	4
	Plastic Channel Lamp Cover Green	
S04M039-B	Plastic Channel Lamp Cover Red	2
S04M043-B	Plastic Lamp Cover	1
S04M008-B	Chassis Rec. Lever	1
S04M019-B	Chassis Rec. Chassis (1)	1
S04M021-B	Chassis Rec. Chassis (2)	1
S02M043-C	Chassis Rec. Spring (L)	1
S04M020-C	Chassis Rec. Spring (2)	1
S04M005-A	Chassis Bar Ant. Holder	1
S04M018-B	Chassis Lamp Holder	1
S04M009-A	Chassis Refraction Board	1
S04M051-A	Chassis Shield Plate	1
S04M002-A	Shaft Tuning Shaft	1
S04M016-A	Shaft Bearing	1
S04M028-A	Shaft Pulley Shaft (1)	3
S04M029-A	Shaft Pulley Shaft (2)	4
S04M050-A	Shaft Pulley Shaft (3)	1
S04M015-A	Shaft 8 Door Shaft	1
S04M011-B	Sheet Volume Sheet	1
S04M014-A	Spring 8 Door Spring	1
	Spring Dial Spring	1
S01P011-	Jack Board Assembly	1
	Bushing Gum Bushing (φ15)	1
	Bushing Ant. Gum Bushing (φ12)	1
	Bushing Cord Stopper	1
S04M010-A	Bushing Lamp Rubber	1

Parts No.	Description	Q'ty
S04M049-A	Meter Recording Lever Meter	2
S04M032-C	Cabinet Wood Cabinet	1
S04M031-	Cabinet Back Board 5762	1
	Cabinet Back Board 57T05	
	Cabinet Rubber Foot	4
	Screw Screw M3 x 8	5
	Screw Screw M3 x 6	7
	Tapping Screw 3 x 8	41
	Screw M2.6 x 6	1
	Screw M4 x 10	2
	Screw M4 x 24	3
	Screw M3.1 x 13	1
	Screw M4 x 20	6
	Nut M4 Nut	2
	Nut M3' Nut	4
	Rivet 3φ x 4	5
	M3 x 8	4
	Instruction book (5762) (57T05)	1
	Warranty Card (5762) (57T05)	1
S01W003-A	Back Board	1

**Soundesign 5762  
Tanglewood 57T05**



# SCHEMATIC DIAGRAM

