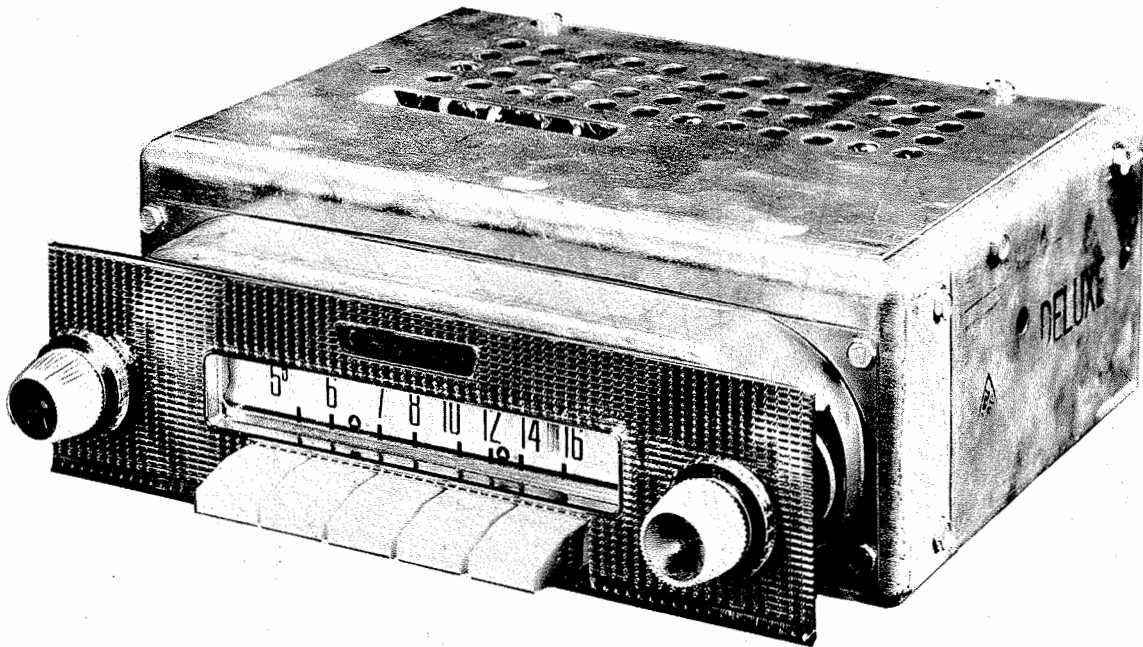


RIVERSIDE
MODEL FJB-6679A



RIVERSIDE
MODEL FJB-6679A

TRADE NAME Riverside Model FJB-6679A
SUPPLIER Montgomery Ward & Co., 619 Chicago Ave., Chicago, Illinois
TYPE SET Battery Operated Universal AM Automobile Receiver with Transistorized Output
TUNING RANGE-BROADCAST 540-1610KC

ALIGNMENT INSTRUCTIONS

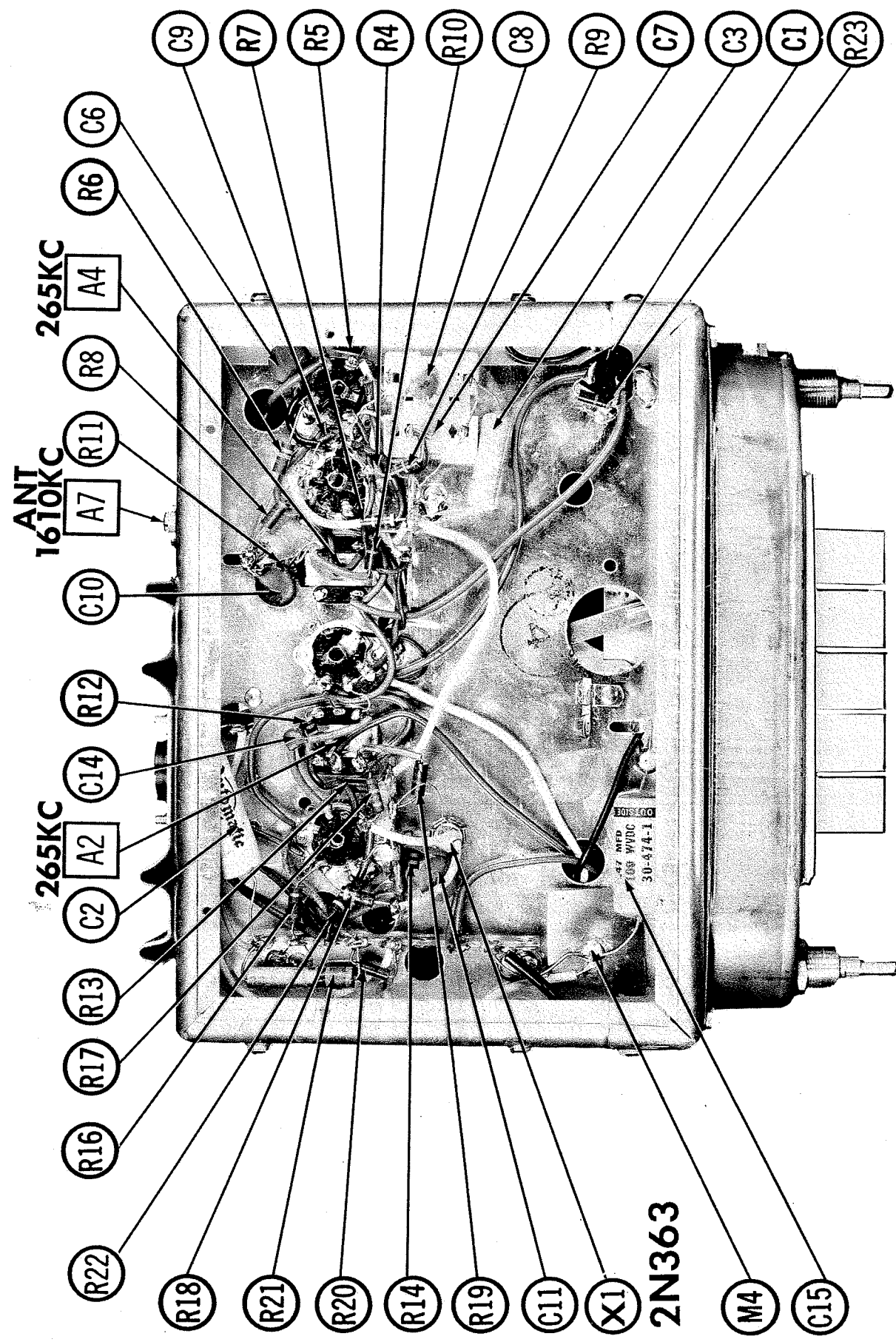
ALIGNMENT INSTRUCTIONS—READ CAREFULLY BEFORE ATTEMPTING ALIGNMENT						
Volume control should be at maximum position. Output of signal generator should be no higher than necessary to obtain an output reading.						
Suggested Alignment Tools: A1, A2, A3, A4.....GENERAL CEMENT #8606, 8606L, 8282, 9295 WALSCO #2526, 2543, 2544, 2545 A5, A6.....GENERAL CEMENT #5000, 5003, 5014, 5015, 5016, 8276, 8290 WALSCO #2512, 2515, 2522, 2523, 2525, 2537						
DUMMY ANTENNA	SIGNAL GENERATOR COUPLING	SIGNAL GENERATOR FREQUENCY	RADIO DIAL SETTING	OUTPUT METER	ADJUST	REMARKS
1. .1mf	High side to pin 7 (grid) of 12AD6 (V2). Low side to chassis.	265KC (Unmod.)	Tuning gang fully open	Across speaker voice coil	A1,A2, A3,A4	Adjust for maximum deflection.
2. "	"	1610KC	"	"	A5	"
3. 68mf	High side to antenna leads. Low side to chassis.	"	"	"	A6,A7	"
4. With radio installed in car and antenna fully extended, tune in a weak station near 1400KC and retouch A7 for maximum volume.						

HOWARD W. SAMs & CO., INC. Indianapolis 6, Indiana

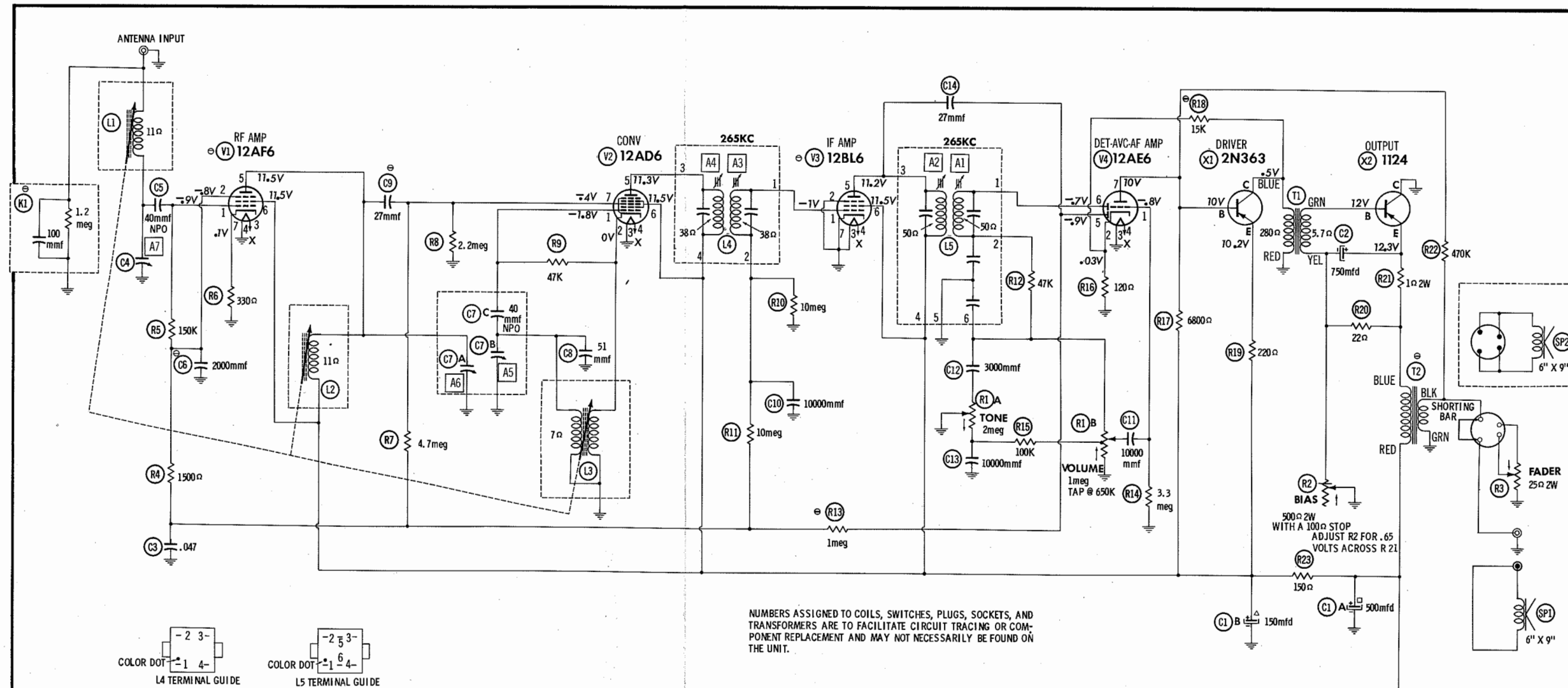
The listing of any available replacement part herein does not constitute in any case a recommendation, warranty or guaranty by Howard W. Sams & Co., Inc., as to the quality and suitability of such replacement part. The numbers of these parts have been compiled from information furnished to Howard W. Sams & Co., Inc., by the manufacturers of J71

the particular type of replacement part listed. Reproduction or use, without express permission, of editorial or pictorial content, in any manner, is prohibited. No patent liability is assumed with respect to the use of the information contained herein. © 1959 Howard W. Sams & Co., Inc., Indianapolis 6, Indiana. Printed in U.S. of America

SET 446 FOLDER 15



CHASSIS BOTTOM VIEW

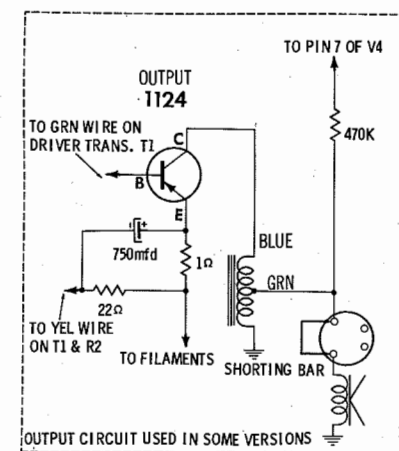
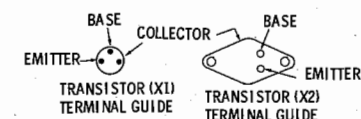
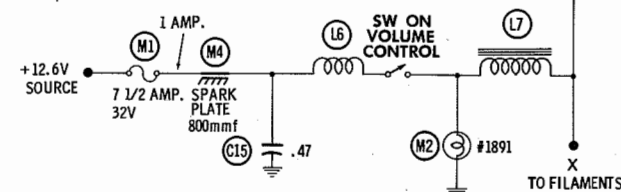


1. DC voltage measurements taken with vacuum tube voltmeter ;
2. Socket connections shown as bottom views.
3. Measured values are from socket pin to common negative.
4. Battery voltage maintained at 12.6 volts for voltage readings.
5. Nominal tolerance on component values makes possible a variation of ±15% in voltage and resistance readings.
6. Volume control at maximum, no signal applied for voltage measurements.

SEE PARTS LIST FOR ALTERNATE VALUE OR APPLICATION

DC COIL RESISTANCE VALUES UNDER ONE OHM NOT SHOWN ON SCHEMATIC DIAGRAM

ARROWS ON CONTROLS INDICATE CLOCKWISE ROTATION (CONTROL VIEWED FROM SHAFT END)



PARTS LIST AND DESCRIPTIONS
TUBES (GENERAL ELECTRIC, SYLVANIA)

ITEM No.	USE	TYPE	NOTES
V1	RF Amplifier	12AF6	*
V2	Converter	12AD6	*

* Alternate

TRANSISTORS

ITEM No.	ORIG. TYPE	USE	REPLACEMENT DATA			NOTES
			CBS PART No.	RAYTHEON PART No.	SYLVANIA PART No.	
X1	2N363	Driver		2N363	2N406	PNP
X2	1124	Output	LT-52		2N442	

ELECTROLYTIC CAPACITORS

ITEM No.	CAP.	VOLT.	REPLACEMENT DATA			NOTES
			AEROVOX PART No.	CORNELL-DUBILIER PART No.	PYRAMID PART No.	
C1A	500	15	AFH2-02-75	B0045	WP200.7	* TVLS-2155 *
C2	750	3	SRE3V500	BR1000-6	TC310	

* Not normally in distributor's stock. Available thru distributor on order to manufacturer.

FIXED CAPACITORS

Capacity values given in the rating column are in mfd. for Paper Capacitors, and in mmfd. for Mica and Ceramic Capacitors.

ITEM No.	CAP.	VOLT.	REPLACEMENT DATA			NOTES
			AEROVOX PART No.	CORNELL-DUBILIER PART No.	MALLORY PART No.	
C3	.047	200	P288N-047	DF-503	CUB2847	27M-547
C4	40				GEM-2147	
C5	2000		BPD-002	DD-202	B-220	5HK-D2
C6	2000					
C7A	40					5TCC-QS15 *
C8	51		DI 27	TCZ-27	L10Q31	
C9	27		BPD-01	DD-103	BYA10S1	5HK-S1
C10	10000		BPD-01	DD-103	BYA10S1	
C11	10000		BPD-01	DD-103	BYA10S1	5HK-S1
C12	3000		BPD-01	DD-103	BYA10S1	
C13	10000		BPD-01	DD-103	BYA10S1	5HK-S1
C14	27		DI 27	TCZ-27	L10Q31	
C15	.47	100	P288N-47	TCZ-27	CUB2847	27M-547
					GEM-2047	

* Not normally in distributor's stock. Available thru distributor on order to manufacturer.

① Some versions may use 3000mmfd in this application.

② Some versions may use 12mmfd in this application.

CONTROLS

ITEM No.	RATING	REPLACEMENT DATA			INSTALLATION NOTES
		RIVERSIDE PART No.	CENTRALAB PART No.	CLAROSTAT PART No.	
R1A	2meg		80A818A	RTV-681C	Tone Volume, Tap @ 650K
R5	1meg			Not Req.	
R7	4.7meg			Not Req.	FL-800S
R8	2.2meg			35-500-100	
R9	47K				Bias, Stop @ 100Ω
R10	10meg				
R11	10meg				Fader
R12	47K				
R13	1meg				

* Not normally in distributor's stock. Available thru distributor on order to manufacturer.

① Some versions may use 3000mmfd in this application.

② Some versions may use 12mmfd in this application.

PARTS LIST AND DESCRIPTIONS (cont)

RESISTORS

All wattages 1/2 watt, or less, unless otherwise listed.

ITEM No.	RATING	OHMS	WATT	NOTES	RIVERSIDE PART No.	NOTES
R14	3.3meg					Note 2
R15	100K					
R16	120Ω					
R17	6800Ω					
R18	15K					
R19	220Ω					
R20	22Ω					
R21	1Ω					
R22	470K					
R23	150Ω					

Note 1. Some versions may use 1.2meg in this application.

Note 2. Some versions may use 12K in this application.

COILS (RF-IF)

ITEM No.	USE	REPLACEMENT DATA			NOTES
		RIVERSIDE PART No.	Gromer PART No.	Metzner PART No.	
L1	Ant. Coil				† Part of M3
L2	RF Coil				
L3	Osc. Coil				1.2th
L4	Input IF				
L5	Output IF				
L6	7A Lead Choke				

FILTER CHOKE

ITEM No.	RATINGS	REPLACEMENT DATA			Triod PART No.
		INDUCTANCE (Measured)	RIVERSIDE PART No.	Holldorson PART No.	
L7	1A	9 Ω		75A601	

TRANSFORMER (DRIVER)

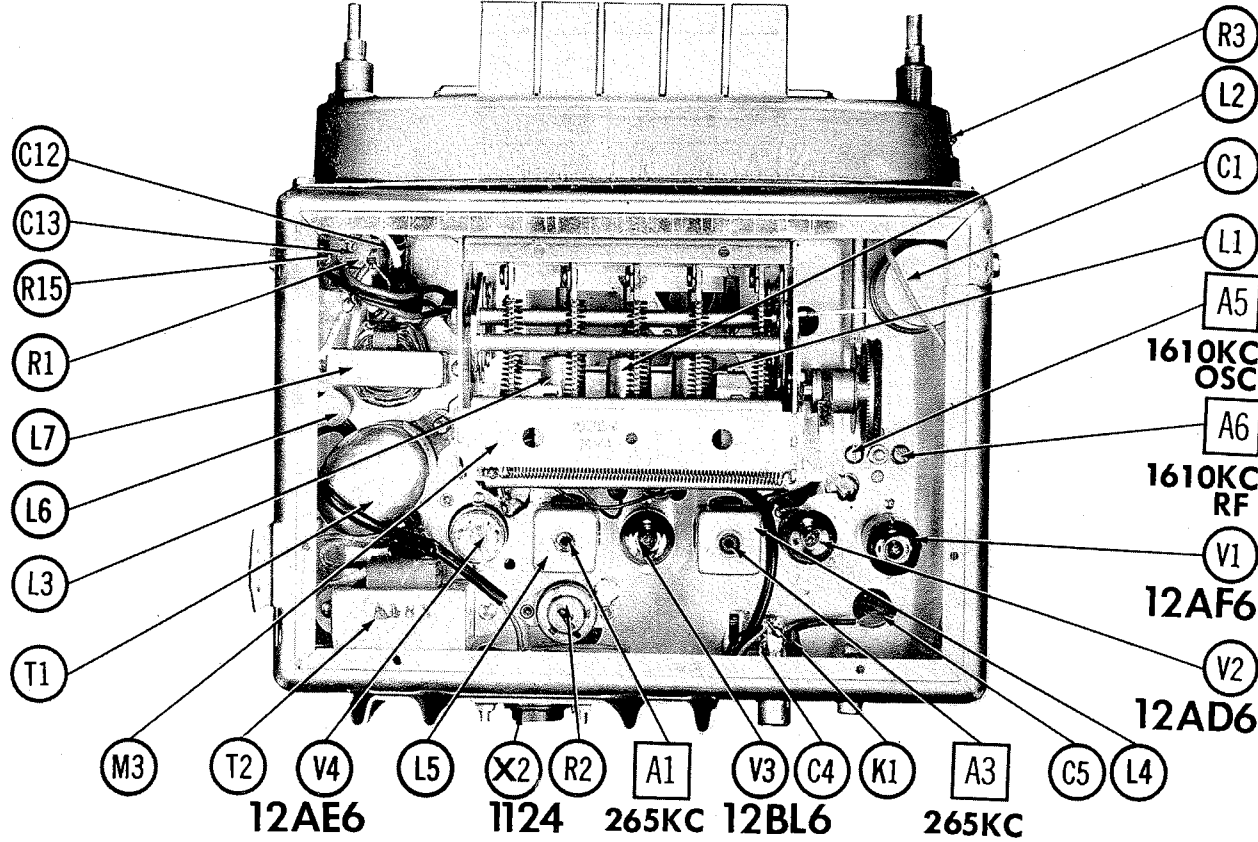
ITEM No.	TURNS RATIO	REPLACEMENT DATA			NOTES
		RIVERSIDE PART No.	Holldorson PART No.	Merit PART No.	
T1	8 1		75A702C		

TRANSFORMER (AUDIO OUTPUT)

ITEM No.	IMPEDANCE	REPLACEMENT DATA			NOTES
		RIVERSIDE PART No.	Holldorson PART No.	Merit PART No.	
T2	130Ω		75A805 ①		

① Alternate Part #75A966

CHASSIS—TOP VIEW



SPEAKER

ITEM No.	TYPE	REPLACEMENT DATA			NOTES
		FIELD	V. C. IMP.	QUAM PART No.	
SP1	6" x 9"	PM	3-4Ω	73B902 ①	69A3
SP2	6" x 9"	PM	3-4Ω	73-655	

COMPONENT COMBINATIONS

ITEM No.	USE	DESCRIPTION	RIVERSIDE PART No.	REPLACEMENT DATA
K1	Antenna Input	100mmf, 1.2meg	①	Sprague PRC-9

① Some versions may use individual components in this application.

FUSES

ITEM No.	TYPE	RATING	REPLACEMENT DATA		
			RIVERSIDE PART No.	LITTELFUSE PART No.	BUSS PART No.
M1	AGW	7 1/2A 32V			
			FUSE	HOLDER	FUSE
					HOLDER
				30707.5	SFE 7 1/2
				(TAG 7 1/2A 32V)	HDH

MISCELLANEOUS

ITEM No.	PART NAME	RIVERSIDE PART No.	NOTES
M2	Lamp	1891	#1891 Pushbutton Type (Specify number on tuner)
M3	Tuner	78-90/490	
M4	Spark Plate	15-801FT	

CABINETS & CABINET PARTS

(When Ordering Cabinets & Cabinet Parts, Specify Model, Chassis & Color)

NAME	PART No.	DESCRIPTION
Knob	47-50	Tuning, On-Off-Volume Tone, Fader
Knob	455393	
Knob	525393	
Escutcheon	545327	

WIRING DATA

General-use Unshielded Hook-up Wire Use BELDEN No. 8530 (Solid) Available in Ten Colors
Shielded Hook-up Wire Use BELDEN No. 8885
Bonding Strap Use BELDEN No. 8661