

SAFETY PRECAUTIONS

SERVICE WARNING

Only qualified service technicians who are familiar with safety checks and guidelines should perform service work. Before replacing parts, disconnect power source to protect electrostatically sensitive parts. Do not attempt to modify any circuit unless so recommended by the manufacturer. When servicing the receiver, use an isolation transformer between the line cord and power receptacle.

SERVICING THE HIGH VOLTAGE AND CRT

Use EXTREME CAUTION when servicing the high voltage circuits. To discharge static high voltage, connect a 10K ohms resistor in series with a test lead between the receiver and CRT anode lead. DO NOT lift the CRT by the neck. Always wear shatterproof goggles when handling the CRT to protect eyes in case of implosion.

X-RAY RADIATION AND HIGH VOLTAGE LIMITS

Be aware of the instructions and procedures covering X-ray radiation. In solid-state receivers and monitors, the CRT is the only potential source of X-rays. Keep an accurate high voltage meter available at all times. Check meter calibration periodically. Whenever servicing a receiver, check the high voltage at various brightness levels to be sure it is regulating properly. Keep high voltage at rated value, NO HIGHER. Excessive high voltage may cause X-ray radiation or failure of associated components. DO NOT depend on protection circuits to keep voltage at rated value. When troubleshooting a receiver with excessive high voltage, avoid close contact with the CRT. DO NOT operate the receiver longer than necessary. To locate the cause of excessive high voltage, use a variable AC transformer to regulate voltage. In present receivers, many electrical and mechanical components have safety related characteristics which are not detectable by visual inspection. Such components are identified by a # on both the schematic and the parts list. For SAFETY, use only equivalent replacement parts when replacing these components.

TEST JIG HOOKUP				
Function	Chek-A-Color Adapter No.	PC Board Plug No.	Pin	Color
CRT	B239	P401	1	Red
Yoke	D482		2	Blue
Yoke Setting	YP1		3	Black
Comments	Focus Tap		4	Yellow
Test jig hookup is for models 580.42052090 / 91 only.				

The listing of any available replacement part herein in no case constitutes a recommendation, warranty, or guarantee by Howard W. Sams & Company as to the quality and suitability of such replacement part. The numbers of the listed parts have been compiled from information furnished to Howard W. Sams & Company by the manufacturers of the specific type of replacement part listed.

Reproduction or use, without express permission, of editorial or pictorial content, in any manner, is prohibited. No patent liability is assumed with respect to the use of the information contained herein.

©1995 by Howard W. Sams & Company  
2647 Waterfront Parkway East Drive, Suite 300  
Indianapolis, IN 46214-2012

Printed in the United States of America 5 4 3 2 1

SAFETY CHECKS – FIRE AND SHOCK HAZARD

Cold Leakage Checks for Receivers with Isolated Ground

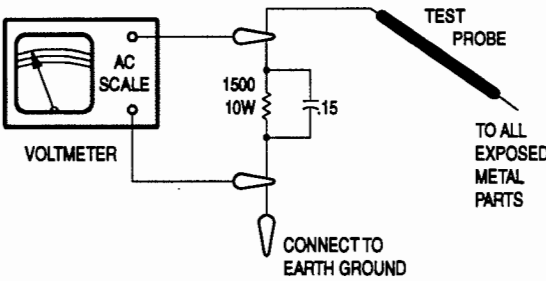
Unplug the AC cord, connect a jumper across the plug prongs, and turn the power switch on (if applicable). Use an ohmmeter to measure the resistance between the jumped AC plug and any exposed metal cabinet parts such as antenna screw heads, control shafts, or handle brackets. Exposed metal parts with a return path should measure between 1M ohms and 5.2M ohms. Parts without a return path must measure infinity.

Hot Leakage Current Check

Plug the AC cord directly into an AC outlet. DO NOT use an isolation transformer. Use a 1500 ohms, 10W resistor in parallel with a .15µF capacitor to connect between any exposed metal parts on the receiver and a good earth ground. (See figure below.) Use an AC voltmeter with at least 5000 ohms per volt sensitivity to measure the voltage across the resistor. Check all exposed metal parts and measure voltage at each point. Voltage measurements should not exceed .75VAC, 500µA. Any value exceeding this limit constitutes a potential shock hazard and must be corrected. If the AC plug is not polarized, reverse the AC plug and repeat exposed metal part voltage measurement at each point.

GENERAL GUIDELINES

Perform a final SAFETY CHECK before returning receiver to customer. Check repaired area for poorly soldered connections, and check entire circuit board for solder splashes. Check inner board wiring for pinched wires or wires contacting any high wattage resistors. Check that all control knobs, shields, covers, grounds, and mounting hardware have been replaced. Be sure to replace all insulators and restore proper lead dress.



95PF02846



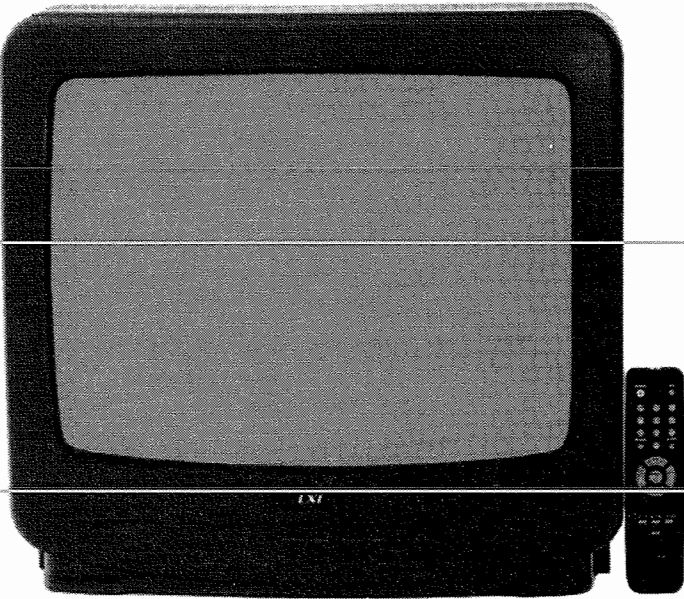
PHOTOFACT® Technical Service Data

SET 3518

MODEL 580.42052090 (CHASSIS NC95A)

SEARS

SEARS  
Model 580.42052090 (Chassis NC95A)



Representative Model

Essential coverage  
for servicing a television receiver...

- Schematics
- Component locations
- Parts list

Coverage includes these additional models and chassis:

MODEL	CHASSIS
580.40472090	NC95A
580.40472091	NC95A
580.42052091	NC95A
580.42052092	NC95A

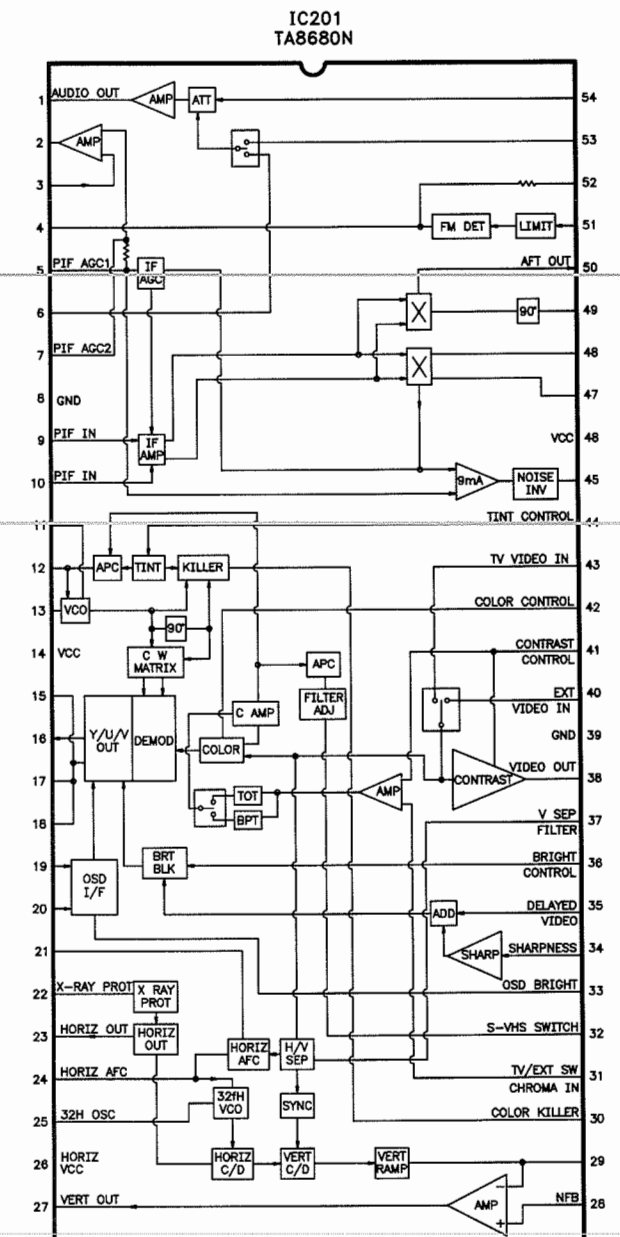
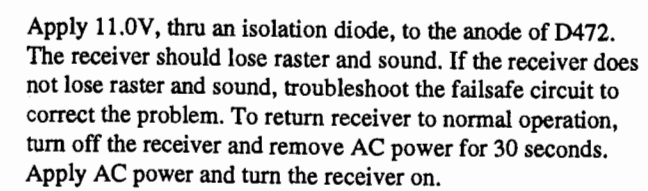


HOWARD W. SAMS & COMPANY

JULY 1995 SET 3518

For Supplier Address,  
See PHOTOFACT Annual Index

## IC FUNCTIONS

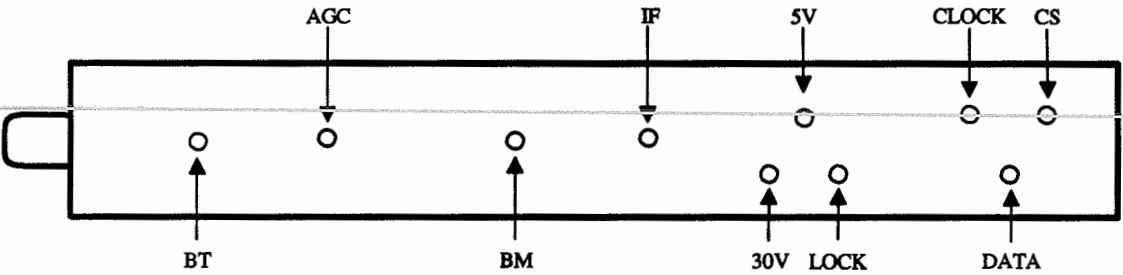


TUNER INFORMATION

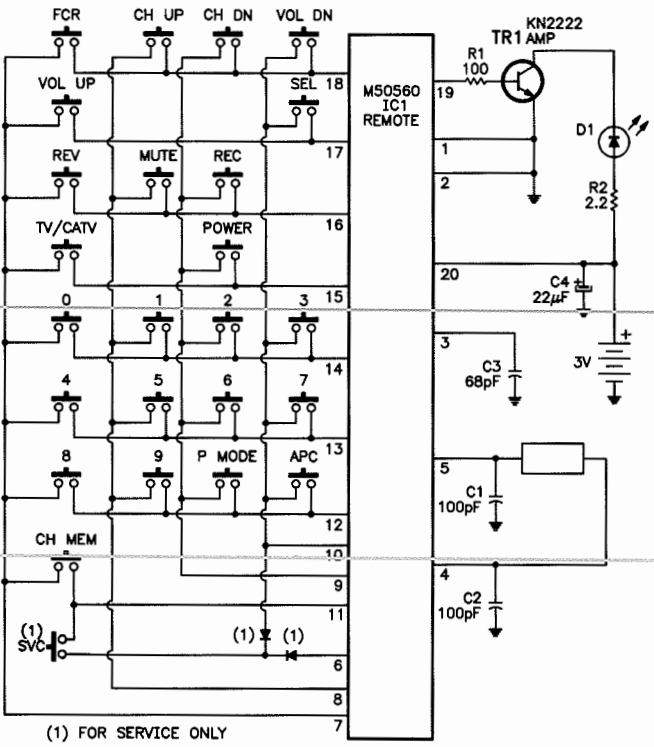
TUNER VOLTAGE CHART

Pin	VHF Low Band	VHF High Band	UHF Band	Pin	VHF Low Band	VHF High Band	UHF Band
BT	1.1V	6.8V	11.3V	CLOCK	.3V	.3V	.3V
AGC	6.8V	6.8V	6.8V	DATA	.3V	.3V	.3V
BM	11.8V	11.8V	11.8V	CS	0V	0V	0V
IF	0V	0V	0V	NOTE: VHF Low Band voltages taken on channel 2. VHF High Band voltages taken on channel 7. UHF Band voltages taken on channel 14.			
30V	28.7V	28.7V	28.7V				
5V	4.5V	4.5V	4.5V				
LOCK	.1V	.1V	.1V				

TUNER TERMINAL GUIDE



REMOTE TRANSMITTER SCHEMATIC



A PHOTOFACIT STANDARD NOTATION SCHEMATIC  
© Howard W. Sams & Co. 1995

SCHEMATIC NOTES

- # For SAFETY use only equivalent replacement part, see parts list.
- ✖ Circuitry not used in some versions.
- Circuitry used in some versions.
- ⬇ Ground
- mm Chassis ground
- ▽ Common tie point
- △ Taken from common tie point
- 3 Schematic CIRCUITRACE®: Voltage source tie point.
- A— Cabling: Heavy lines reduce use of multiple lines.

Waveforms and voltages are taken from ground, unless noted otherwise.  
Waveforms taken with triggered scope and colorbar signal. Waveform voltage is peak to peak. Timebase is per division. Waveforms shown at 10 divisions.  
Supply voltages maintained as seen at input.  
Voltages measured with digital meter and a 1000µV RF signal, with colorbar pattern, applied to antenna terminal.  
Controls adjusted for normal operation.  
Capacitors are 50 volts or less, 5% or greater unless noted.  
Electrolytic capacitors are 50 volts or less, 20% or greater unless noted.  
Resistors are 1/2W or less, 5% or greater unless noted.  
Value in ( ) used in some versions.  
Measurements with switching as shown, unless noted.  
Rated voltage shown on zener diodes.

MISCELLANEOUS ADJUSTMENTS

The following adjustments are necessary only when IC2 is replaced or the APC settings are incorrect. When making the following adjustments use the modified remote transmitter.

SUB BRIGHTNESS

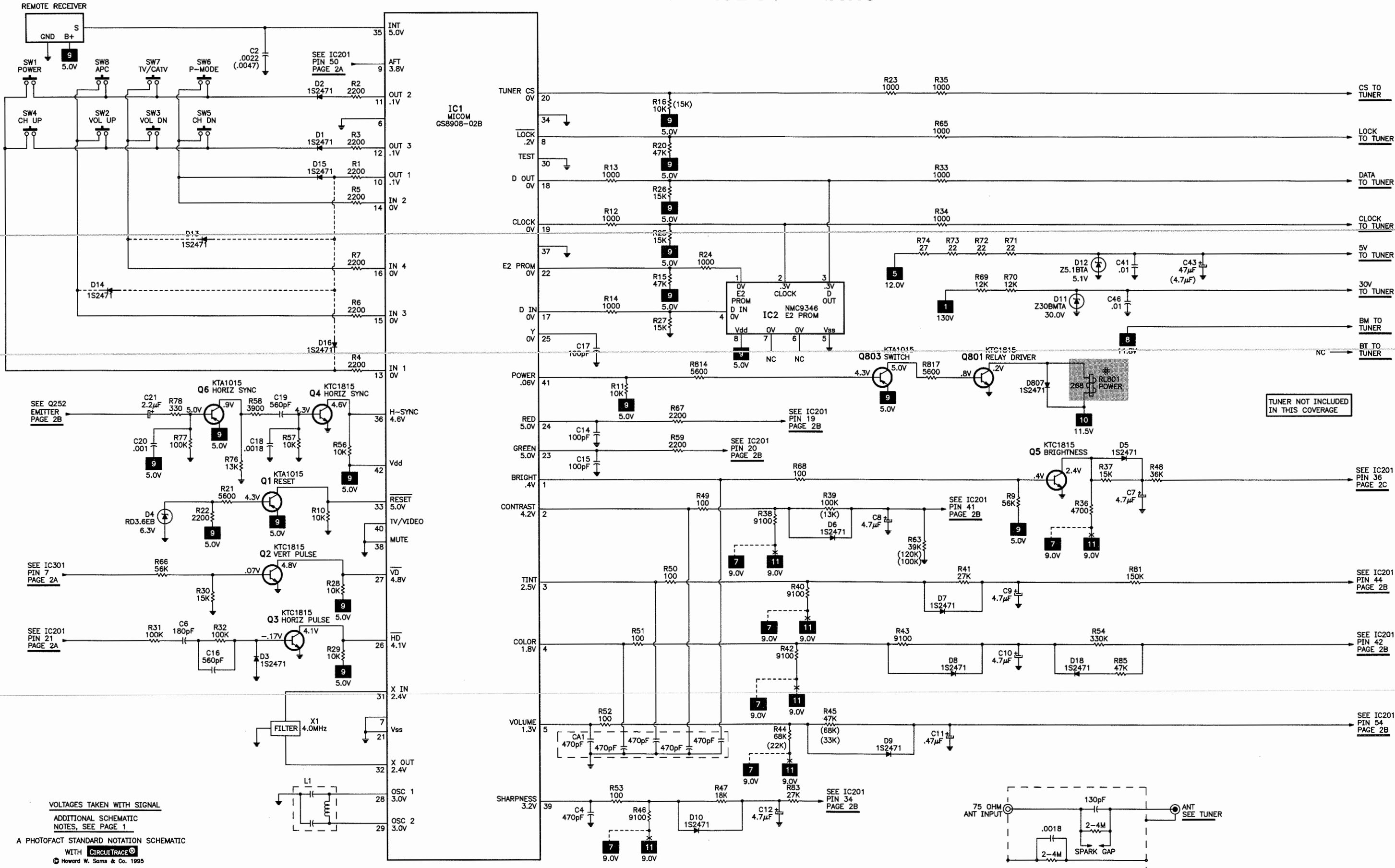
Tune in a NTSC pattern. Set contrast, brightness, tint, color, and sharpness to midrange. Adjust the volume + and - keys while in the sub brightness mode to distinguish the sixth and seventh stages.

SUB COLOR & SUB TINT

With receiver off short pin 1 to pin 2 and pin 5 to pin 6 of P503. Turn on the receiver and tune in an active station. Screen should be in a red condition. Set contrast, brightness, tint, color, and sharpness to midrange. In the sub color mode adjust volume + and - keys for proper color content. In the sub tint mode adjust volume + and - keys for proper flesh tone.

SEARS  
MODEL 580.42052090 (CHASSIS NC95A)

SYSTEM CONTROL SCHEMATIC




PARTS LIST

<div>Important Parts Information</div> <div><ul style="list-style-type: none"><li>The parts listed here are those not usually available from a well-stocked supply cabinet or bin.</li><li>Where Items may be replaced with equivalent parts, several alternates are shown from participating vendors.</li><li>On the parts lists, safety items are marked with a # to remind you that only exact replacements are recommended for these items.</li></ul></div>	<div>SEMICONDUCTORS</div> <div>(Select the replacement that gives the best results.)</div> <table><tr><th>Item No.</th><th>Type No.</th><th>Mfr. Part No.</th><th>NTE Part No.</th><th>ECG Part No.</th><th>TCE Part No.</th></tr><tr><td>D1, 2, 3</td><td>1S2471/TA</td><td>46-86309-3</td><td>NTE177</td><td>ECG177</td><td>SK9091</td></tr><tr><td>D4</td><td>RD3.6EB</td><td>-</td><td>NTE5006A</td><td>ECG5006A</td><td>SK3A6</td></tr><tr><td></td><td>HZ3.6CP/TA</td><td>46-861720-3</td><td>NTE5006A</td><td>ECG5006A</td><td>SK3A6</td></tr><tr><td>D5 Thru</td><td></td><td></td><td></td><td></td><td></td></tr><tr><td>D10</td><td>1S2471/TA</td><td>46-86309-3</td><td>NTE177</td><td>ECG177</td><td>SK9091</td></tr><tr><td>D11</td><td>Z30BMTA</td><td>46-862796-3</td><td>NTE5035A</td><td>ECG5035A</td><td>SK30A</td></tr><tr><td>D12</td><td>Z5.1BTA</td><td>46-86915-3</td><td>NTE5010A</td><td>ECG5010A</td><td>SK5A1</td></tr><tr><td>(2)</td><td>MTZ5.1B(TA)</td><td>46-86915-3</td><td>NTE5010A</td><td>ECG5010A</td><td>SK5A1</td></tr><tr><td>D13, 14 (1)</td><td>1S2471/TA</td><td>46-86309-3</td><td>NTE177</td><td>ECG177</td><td>SK9091</td></tr><tr><td>D15</td><td>1S2471/TA</td><td>46-86309-3</td><td>NTE177</td><td>ECG177</td><td>SK9091</td></tr><tr><td>D16 (1)</td><td>1S2471/TA</td><td>46-86309-3</td><td>NTE177</td><td>ECG177</td><td>SK9091</td></tr><tr><td>D18</td><td>1S2471/TA</td><td>46-86309-3</td><td>NTE177</td><td>ECG177</td><td>SK9091</td></tr><tr><td>D101</td><td>Z9.1BLTA</td><td>46-86953-3</td><td>NTE139A</td><td>ECG139A</td><td>SK9V1</td></tr><tr><td>(2)</td><td>Z9.1B</td><td>46-861159-3</td><td>NTE139A</td><td>ECG139A</td><td>SK9V1</td></tr><tr><td>D201 Thru</td><td></td><td></td><td></td><td></td><td></td></tr><tr><td>D204</td><td>1S2471/TA</td><td>46-86309-3</td><td>NTE177</td><td>ECG177</td><td>SK9091</td></tr><tr><td>D301</td><td>1S2471TA</td><td>46-86309-3</td><td>NTE177</td><td>ECG177</td><td>SK9091</td></tr><tr><td>(2)</td><td>1N4002</td><td>86-67-3</td><td>NTE116</td><td>ECG116</td><td>SK3311</td></tr><tr><td>D302</td><td>RU-1</td><td>-</td><td>NTE552</td><td>ECG552</td><td>SK9000</td></tr><tr><td></td><td>RU-1V</td><td>46-86507-3</td><td>NTE552</td><td>ECG552</td><td>SK9000</td></tr><tr><td>(2)</td><td>RGP100TA</td><td>46-861634-3</td><td>-</td><td>-</td><td>-</td></tr><tr><td>D401</td><td>Z9.1BLTA</td><td>46-86953-3</td><td>NTE139A</td><td>ECG139A</td><td>SK9V1</td></tr><tr><td>(2)</td><td>Z9.1B</td><td>46-861159-3</td><td>NTE139A</td><td>ECG139A</td><td>SK9V1</td></tr><tr><td>D402</td><td>1S2471/TA</td><td>46-86309-3</td><td>NTE177</td><td>ECG177</td><td>SK9091</td></tr><tr><td># D471</td><td>1N4004/TA</td><td>86-67-3</td><td>NTE116</td><td>ECG116</td><td>SK3312</td></tr><tr><td># D472</td><td>1S2471/TA</td><td>46-86309-3</td><td>NTE177</td><td>ECG177</td><td>SK9091</td></tr><tr><td># D473</td><td>Z9.1BLTA</td><td>46-86953-3</td><td>NTE139A</td><td>ECG139A</td><td>SK9V1</td></tr><tr><td>(2)</td><td>Z9.1B</td><td>46-861159-3</td><td>NTE139A</td><td>ECG139A</td><td>SK9V1</td></tr><tr><td>D501</td><td>RU-1</td><td>-</td><td>NTE552</td><td>ECG552</td><td>SK9000</td></tr><tr><td></td><td>RU-1V</td><td>46-86507-3</td><td>NTE552</td><td>ECG552</td><td>SK9000</td></tr><tr><td>(2)</td><td>RGP100TA</td><td>46-861634-3</td><td>-</td><td>-</td><td>-</td></tr><tr><td>D502</td><td>Z9.1BLTA</td><td>46-86953-3</td><td>NTE139A</td><td>ECG139A</td><td>SK9V1</td></tr><tr><td>(2)</td><td>Z9.1B</td><td>46-861159-3</td><td>NTE139A</td><td>ECG139A</td><td>SK9V1</td></tr><tr><td># D561</td><td>RU-1</td><td>-</td><td>NTE552</td><td>ECG552</td><td>SK9000</td></tr><tr><td></td><td>RU-1V</td><td>46-86507-3</td><td>NTE552</td><td>ECG552</td><td>SK9000</td></tr><tr><td>(2)</td><td>RGP100TA</td><td>46-861634-3</td><td>-</td><td>-</td><td>-</td></tr><tr><td># D801 Thru</td><td></td><td></td><td></td><td></td><td></td></tr><tr><td># D805</td><td>1N4004TA</td><td>86-67-3</td><td>NTE116</td><td>ECG116</td><td>SK3312</td></tr><tr><td>D806</td><td>Z11BLTA</td><td>46-861336-3</td><td>NTE5020A</td><td>ECG5020A</td><td>SK11A</td></tr><tr><td>(2)</td><td>Z11BMTA</td><td>46-861336-3</td><td>-</td><td>ECG5020A</td><td>-</td></tr><tr><td>D807</td><td>1S2471/TA</td><td>46-86309-3</td><td>NTE177</td><td>ECG177</td><td>SK9091</td></tr><tr><td>D808</td><td>Z5.1BTA</td><td>46-86915-3</td><td>NTE5010A</td><td>ECG5010A</td><td>SK5A1</td></tr><tr><td># D809</td><td>1S2471/TA</td><td>46-86309-3</td><td>NTE177</td><td>ECG177</td><td>SK9091</td></tr><tr><td>D810</td><td>1N4004TA</td><td>86-67-3</td><td>NTE116</td><td>ECG116</td><td>SK3312</td></tr><tr><td>D901</td><td>RU-1</td><td>-</td><td>NTE552</td><td>ECG552</td><td>SK9000</td></tr><tr><td></td><td>RU-1V</td><td>46-86507-3</td><td>NTE552</td><td>ECG552</td><td>SK9000</td></tr><tr><td>(2)</td><td>RGP100TA</td><td>46-861634-3</td><td>-</td><td>-</td><td>-</td></tr><tr><td>D902</td><td>1S2471/TA</td><td>46-86309-3</td><td>NTE177</td><td>ECG177</td><td>SK9091</td></tr><tr><td>IC1</td><td>GS8908-02B</td><td>46-133565-3</td><td>-</td><td>-</td><td>-</td></tr><tr><td>(2)(3)</td><td>GS8908-02C</td><td>46-133677-3</td><td>-</td><td>-</td><td>-</td></tr><tr><td>IC2</td><td>NMC9346</td><td>46-133566-3</td><td>-</td><td>-</td><td>-</td></tr><tr><td>IC201</td><td>TA8680N</td><td>46-132931-3</td><td>NTE7010</td><td>ECG7010</td><td>SK10479</td></tr><tr><td>IC301</td><td>LA7830</td><td>46-131208-3</td><td>NTE1773</td><td>ECG1773</td><td>SK9752</td></tr><tr><td># IC801</td><td>STR30130</td><td>6125860002</td><td>NTE1777</td><td>ECG1777</td><td>SK9870</td></tr><tr><td>Q1</td><td>KTA1015-Y(TA)</td><td>46-86679-3</td><td>NTE290A</td><td>ECG290A</td><td>SK9132</td></tr><tr><td>Q2 Thru</td><td></td><td></td><td></td><td></td><td></td></tr><tr><td>Q5</td><td>KTC1815-Y(TA)</td><td>46-86682-3</td><td>NTE85</td><td>ECG85</td><td>SK9229</td></tr><tr><td>#</td><td colspan="5">For SAFETY use only equivalent replacement part.</td></tr><tr><td>(1)</td><td colspan="5">Used in some versions.</td></tr><tr><td>(2)</td><td colspan="5">Used in models 580.40472090 and 580.40472091.</td></tr><tr><td>(3)</td><td colspan="5">Used in model 580.42052092.</td></tr></table>						Item No.	Type No.	Mfr. Part No.	NTE Part No.	ECG Part No.	TCE Part No.	D1, 2, 3	1S2471/TA	46-86309-3	NTE177	ECG177	SK9091	D4	RD3.6EB	-	NTE5006A	ECG5006A	SK3A6		HZ3.6CP/TA	46-861720-3	NTE5006A	ECG5006A	SK3A6	D5 Thru						D10	1S2471/TA	46-86309-3	NTE177	ECG177	SK9091	D11	Z30BMTA	46-862796-3	NTE5035A	ECG5035A	SK30A	D12	Z5.1BTA	46-86915-3	NTE5010A	ECG5010A	SK5A1	(2)	MTZ5.1B(TA)	46-86915-3	NTE5010A	ECG5010A	SK5A1	D13, 14 (1)	1S2471/TA	46-86309-3	NTE177	ECG177	SK9091	D15	1S2471/TA	46-86309-3	NTE177	ECG177	SK9091	D16 (1)	1S2471/TA	46-86309-3	NTE177	ECG177	SK9091	D18	1S2471/TA	46-86309-3	NTE177	ECG177	SK9091	D101	Z9.1BLTA	46-86953-3	NTE139A	ECG139A	SK9V1	(2)	Z9.1B	46-861159-3	NTE139A	ECG139A	SK9V1	D201 Thru						D204	1S2471/TA	46-86309-3	NTE177	ECG177	SK9091	D301	1S2471TA	46-86309-3	NTE177	ECG177	SK9091	(2)	1N4002	86-67-3	NTE116	ECG116	SK3311	D302	RU-1	-	NTE552	ECG552	SK9000		RU-1V	46-86507-3	NTE552	ECG552	SK9000	(2)	RGP100TA	46-861634-3	-	-	-	D401	Z9.1BLTA	46-86953-3	NTE139A	ECG139A	SK9V1	(2)	Z9.1B	46-861159-3	NTE139A	ECG139A	SK9V1	D402	1S2471/TA	46-86309-3	NTE177	ECG177	SK9091	# D471	1N4004/TA	86-67-3	NTE116	ECG116	SK3312	# D472	1S2471/TA	46-86309-3	NTE177	ECG177	SK9091	# D473	Z9.1BLTA	46-86953-3	NTE139A	ECG139A	SK9V1	(2)	Z9.1B	46-861159-3	NTE139A	ECG139A	SK9V1	D501	RU-1	-	NTE552	ECG552	SK9000		RU-1V	46-86507-3	NTE552	ECG552	SK9000	(2)	RGP100TA	46-861634-3	-	-	-	D502	Z9.1BLTA	46-86953-3	NTE139A	ECG139A	SK9V1	(2)	Z9.1B	46-861159-3	NTE139A	ECG139A	SK9V1	# D561	RU-1	-	NTE552	ECG552	SK9000		RU-1V	46-86507-3	NTE552	ECG552	SK9000	(2)	RGP100TA	46-861634-3	-	-	-	# D801 Thru						# D805	1N4004TA	86-67-3	NTE116	ECG116	SK3312	D806	Z11BLTA	46-861336-3	NTE5020A	ECG5020A	SK11A	(2)	Z11BMTA	46-861336-3	-	ECG5020A	-	D807	1S2471/TA	46-86309-3	NTE177	ECG177	SK9091	D808	Z5.1BTA	46-86915-3	NTE5010A	ECG5010A	SK5A1	# D809	1S2471/TA	46-86309-3	NTE177	ECG177	SK9091	D810	1N4004TA	86-67-3	NTE116	ECG116	SK3312	D901	RU-1	-	NTE552	ECG552	SK9000		RU-1V	46-86507-3	NTE552	ECG552	SK9000	(2)	RGP100TA	46-861634-3	-	-	-	D902	1S2471/TA	46-86309-3	NTE177	ECG177	SK9091	IC1	GS8908-02B	46-133565-3	-	-	-	(2)(3)	GS8908-02C	46-133677-3	-	-	-	IC2	NMC9346	46-133566-3	-	-	-	IC201	TA8680N	46-132931-3	NTE7010	ECG7010	SK10479	IC301	LA7830	46-131208-3	NTE1773	ECG1773	SK9752	# IC801	STR30130	6125860002	NTE1777	ECG1777	SK9870	Q1	KTA1015-Y(TA)	46-86679-3	NTE290A	ECG290A	SK9132	Q2 Thru						Q5	KTC1815-Y(TA)	46-86682-3	NTE85	ECG85	SK9229	#	For SAFETY use only equivalent replacement part.					(1)	Used in some versions.					(2)	Used in models 580.40472090 and 580.40472091.					(3)	Used in model 580.42052092.					<div>SEMICONDUCTORS continued</div> <div>(Select the replacement that gives the best results.)</div> <table><tr><th>Item No.</th><th>Type No.</th><th>Mfr. Part No.</th><th>NTE Part No.</th><th>ECG Part No.</th><th>TCE Part No.</th></tr><tr><td>Q6</td><td>KTA1015-Y(TA)</td><td>46-86679-3</td><td>NTE290A</td><td>ECG290A</td><td>SK9132</td></tr><tr><td>Q101</td><td>KTC388A(TA)</td><td>46-86535-3</td><td>NTE85</td><td>ECG85</td><td>SK9229</td></tr><tr><td>Q201</td><td>KTA562TM-Y(TA)</td><td>46-86805-3</td><td>NTE290A</td><td>ECG290A</td><td>SK3114A</td></tr><tr><td>Q202</td><td>KTC1815-Y(TA)</td><td>46-86682-3</td><td>NTE85</td><td>ECG85</td><td>SK9229</td></tr><tr><td>Q252</td><td>KTA1015-Y(TA)</td><td>46-86679-3</td><td>NTE290A</td><td>ECG290A</td><td>SK9132</td></tr><tr><td>Q401</td><td>KTC2482(TA)</td><td>46-86630-3</td><td>NTE399</td><td>ECG399</td><td>SK9352</td></tr><tr><td># Q402</td><td>2SD1555</td><td>46-861453-3</td><td>NTE2331</td><td>ECG2331</td><td>SK9422</td></tr><tr><td>(2)</td><td>2SD1554</td><td>46-861627-3</td><td>NTE2302</td><td>ECG2302</td><td>SK9422</td></tr><tr><td>Q561, 62, 63</td><td>KTC2482</td><td>46-86630-3</td><td>NTE399</td><td>ECG399</td><td>SK3244</td></tr><tr><td>Q801, 02</td><td>KTC1815-Y(TA)</td><td>46-86682-3</td><td>NTE85</td><td>ECG85</td><td>SK9229</td></tr><tr><td>Q803</td><td>KTA1015-Y(TA)</td><td>46-86679-3</td><td>NTE290A</td><td>ECG290A</td><td>SK9132</td></tr><tr><td>Q901</td><td>KTC2120-Y(TR)</td><td>46-86589-3</td><td>NTE289A</td><td>ECG289A</td><td>SK3124A</td></tr><tr><td>Q902</td><td>KTA950-Y(TA)</td><td>46-86574-3</td><td>NTE294</td><td>ECG294</td><td>SK3841</td></tr><tr><td>Q903</td><td>KTC1815-Y(TA)</td><td>46-86682-3</td><td>NTE85</td><td>ECG85</td><td>SK9229</td></tr><tr><td>#</td><td colspan="5">For SAFETY use only equivalent replacement part.</td></tr><tr><td>(2)</td><td colspan="5">Used in models 580.40472090 and 580.40472091</td></tr></table>						Item No.	Type No.	Mfr. Part No.	NTE Part No.	ECG Part No.	TCE Part No.	Q6	KTA1015-Y(TA)	46-86679-3	NTE290A	ECG290A	SK9132	Q101	KTC388A(TA)	46-86535-3	NTE85	ECG85	SK9229	Q201	KTA562TM-Y(TA)	46-86805-3	NTE290A	ECG290A	SK3114A	Q202	KTC1815-Y(TA)	46-86682-3	NTE85	ECG85	SK9229	Q252	KTA1015-Y(TA)	46-86679-3	NTE290A	ECG290A	SK9132	Q401	KTC2482(TA)	46-86630-3	NTE399	ECG399	SK9352	# Q402	2SD1555	46-861453-3	NTE2331	ECG2331	SK9422	(2)	2SD1554	46-861627-3	NTE2302	ECG2302	SK9422	Q561, 62, 63	KTC2482	46-86630-3	NTE399	ECG399	SK3244	Q801, 02	KTC1815-Y(TA)	46-86682-3	NTE85	ECG85	SK9229	Q803	KTA1015-Y(TA)	46-86679-3	NTE290A	ECG290A	SK9132	Q901	KTC2120-Y(TR)	46-86589-3	NTE289A	ECG289A	SK3124A	Q902	KTA950-Y(TA)	46-86574-3	NTE294	ECG294	SK3841	Q903	KTC1815-Y(TA)	46-86682-3	NTE85	ECG85	SK9229	#	For SAFETY use only equivalent replacement part.					(2)	Used in models 580.40472090 and 580.40472091					<div>COILS &amp; TRANSFORMERS</div> <table><tr><th>Item No.</th><th>Function/Rating</th><th>Mfr. Part No.</th></tr><tr><td># DY1</td><td>Yoke 90°</td><td>46-801662-3</td></tr><tr><td></td><td>Horiz1.9mH</td><td></td></tr><tr><td></td><td>Vert24.7mH</td><td></td></tr><tr><td>(2)</td><td>Yoke 90°</td><td>46-801729-3</td></tr><tr><td>(3)</td><td>Yoke 90°</td><td>46-801667-3</td></tr><tr><td>(4)</td><td>Yoke 90°</td><td>153-113J</td></tr><tr><td>L1</td><td>Oscillator 6.5MHz</td><td>46-103386-3</td></tr><tr><td>L101</td><td>.79mH</td><td>46-102646-3</td></tr><tr><td>L103</td><td>AFT</td><td>46-102765-3</td></tr><tr><td>L181</td><td>AFT</td><td>46-103387-3</td></tr><tr><td>L201</td><td>33µH</td><td>46-102795-3</td></tr><tr><td>L251</td><td>12µH</td><td>46-102810-3</td></tr><tr><td>(5)</td><td>15µH</td><td>46-101298-3</td></tr><tr><td># L403</td><td>180mH</td><td>46-103390-3</td></tr><tr><td># L404</td><td>Horizontal Linearity</td><td>46-103391-3</td></tr><tr><td>(5)</td><td>Horizontal Linearity</td><td>46-103417-3</td></tr><tr><td>L601</td><td>SIF</td><td>46-103392-3</td></tr><tr><td>L602</td><td>27µH</td><td>46-103340-3</td></tr><tr><td># L801</td><td>Degaussing</td><td>46-102640-3</td></tr><tr><td>(2)</td><td>Degaussing</td><td>46-103474-3</td></tr><tr><td>(5)</td><td>Degaussing</td><td>46-103418-3</td></tr><tr><td># T401</td><td>Horizontal Drive</td><td>46-801326-3</td></tr><tr><td># T403 (1)</td><td>Horizontal Output</td><td>46-801621-3</td></tr><tr><td>(1)(2)</td><td>Horizontal Output</td><td>46-801728-3</td></tr><tr><td>(1)(3)</td><td>Horizontal Output</td><td>46-801665-3</td></tr><tr><td># T801</td><td>Line Filter</td><td>46-102625-3</td></tr><tr><td>(5)</td><td>Line Filter</td><td>46-102771-3</td></tr><tr><td>#</td><td colspan="2">For SAFETY use only equivalent replacement part.</td></tr><tr><td>(1)</td><td colspan="2">Focus and screen controls are part of T403.</td></tr><tr><td>(2)</td><td colspan="2">Used in model 580.42052092.</td></tr><tr><td>(3)</td><td colspan="2">Used in model 580.40472090.</td></tr><tr><td>(3)</td><td colspan="2">Used in model 580.40472091.</td></tr><tr><td>(4)</td><td colspan="2">Used in models 580.40472090 and 580.40472091.</td></tr></table>			Item No.	Function/Rating	Mfr. Part No.	# DY1	Yoke 90°	46-801662-3		Horiz1.9mH			Vert24.7mH		(2)	Yoke 90°	46-801729-3	(3)	Yoke 90°	46-801667-3	(4)	Yoke 90°	153-113J	L1	Oscillator 6.5MHz	46-103386-3	L101	.79mH	46-102646-3	L103	AFT	46-102765-3	L181	AFT	46-103387-3	L201	33µH	46-102795-3	L251	12µH	46-102810-3	(5)	15µH	46-101298-3	# L403	180mH	46-103390-3	# L404	Horizontal Linearity	46-103391-3	(5)	Horizontal Linearity	46-103417-3	L601	SIF	46-103392-3	L602	27µH	46-103340-3	# L801	Degaussing	46-102640-3	(2)	Degaussing	46-103474-3	(5)	Degaussing	46-103418-3	# T401	Horizontal Drive	46-801326-3	# T403 (1)	Horizontal Output	46-801621-3	(1)(2)	Horizontal Output	46-801728-3	(1)(3)	Horizontal Output	46-801665-3	# T801	Line Filter	46-102625-3	(5)	Line Filter	46-102771-3	#	For SAFETY use only equivalent replacement part.		(1)	Focus and screen controls are part of T403.		(2)	Used in model 580.42052092.		(3)	Used in model 580.40472090.		(3)	Used in model 580.40472091.		(4)	Used in models 580.40472090 and 580.40472091.	
	Item No.	Type No.	Mfr. Part No.	NTE Part No.	ECG Part No.	TCE Part No.																																																																																																																																																																																																																																																																																																																																																																																																																																																																																																																																																																																																									
D1, 2, 3	1S2471/TA	46-86309-3	NTE177	ECG177	SK9091																																																																																																																																																																																																																																																																																																																																																																																																																																																																																																																																																																																																										
D4	RD3.6EB	-	NTE5006A	ECG5006A	SK3A6																																																																																																																																																																																																																																																																																																																																																																																																																																																																																																																																																																																																										
	HZ3.6CP/TA	46-861720-3	NTE5006A	ECG5006A	SK3A6																																																																																																																																																																																																																																																																																																																																																																																																																																																																																																																																																																																																										
D5 Thru																																																																																																																																																																																																																																																																																																																																																																																																																																																																																																																																																																																																															
D10	1S2471/TA	46-86309-3	NTE177	ECG177	SK9091																																																																																																																																																																																																																																																																																																																																																																																																																																																																																																																																																																																																										
D11	Z30BMTA	46-862796-3	NTE5035A	ECG5035A	SK30A																																																																																																																																																																																																																																																																																																																																																																																																																																																																																																																																																																																																										
D12	Z5.1BTA	46-86915-3	NTE5010A	ECG5010A	SK5A1																																																																																																																																																																																																																																																																																																																																																																																																																																																																																																																																																																																																										
(2)	MTZ5.1B(TA)	46-86915-3	NTE5010A	ECG5010A	SK5A1																																																																																																																																																																																																																																																																																																																																																																																																																																																																																																																																																																																																										
D13, 14 (1)	1S2471/TA	46-86309-3	NTE177	ECG177	SK9091																																																																																																																																																																																																																																																																																																																																																																																																																																																																																																																																																																																																										
D15	1S2471/TA	46-86309-3	NTE177	ECG177	SK9091																																																																																																																																																																																																																																																																																																																																																																																																																																																																																																																																																																																																										
D16 (1)	1S2471/TA	46-86309-3	NTE177	ECG177	SK9091																																																																																																																																																																																																																																																																																																																																																																																																																																																																																																																																																																																																										
D18	1S2471/TA	46-86309-3	NTE177	ECG177	SK9091																																																																																																																																																																																																																																																																																																																																																																																																																																																																																																																																																																																																										
D101	Z9.1BLTA	46-86953-3	NTE139A	ECG139A	SK9V1																																																																																																																																																																																																																																																																																																																																																																																																																																																																																																																																																																																																										
(2)	Z9.1B	46-861159-3	NTE139A	ECG139A	SK9V1																																																																																																																																																																																																																																																																																																																																																																																																																																																																																																																																																																																																										
D201 Thru																																																																																																																																																																																																																																																																																																																																																																																																																																																																																																																																																																																																															
D204	1S2471/TA	46-86309-3	NTE177	ECG177	SK9091																																																																																																																																																																																																																																																																																																																																																																																																																																																																																																																																																																																																										
D301	1S2471TA	46-86309-3	NTE177	ECG177	SK9091																																																																																																																																																																																																																																																																																																																																																																																																																																																																																																																																																																																																										
(2)	1N4002	86-67-3	NTE116	ECG116	SK3311																																																																																																																																																																																																																																																																																																																																																																																																																																																																																																																																																																																																										
D302	RU-1	-	NTE552	ECG552	SK9000																																																																																																																																																																																																																																																																																																																																																																																																																																																																																																																																																																																																										
	RU-1V	46-86507-3	NTE552	ECG552	SK9000																																																																																																																																																																																																																																																																																																																																																																																																																																																																																																																																																																																																										
(2)	RGP100TA	46-861634-3	-	-	-																																																																																																																																																																																																																																																																																																																																																																																																																																																																																																																																																																																																										
D401	Z9.1BLTA	46-86953-3	NTE139A	ECG139A	SK9V1																																																																																																																																																																																																																																																																																																																																																																																																																																																																																																																																																																																																										
(2)	Z9.1B	46-861159-3	NTE139A	ECG139A	SK9V1																																																																																																																																																																																																																																																																																																																																																																																																																																																																																																																																																																																																										
D402	1S2471/TA	46-86309-3	NTE177	ECG177	SK9091																																																																																																																																																																																																																																																																																																																																																																																																																																																																																																																																																																																																										
# D471	1N4004/TA	86-67-3	NTE116	ECG116	SK3312																																																																																																																																																																																																																																																																																																																																																																																																																																																																																																																																																																																																										
# D472	1S2471/TA	46-86309-3	NTE177	ECG177	SK9091																																																																																																																																																																																																																																																																																																																																																																																																																																																																																																																																																																																																										
# D473	Z9.1BLTA	46-86953-3	NTE139A	ECG139A	SK9V1																																																																																																																																																																																																																																																																																																																																																																																																																																																																																																																																																																																																										
(2)	Z9.1B	46-861159-3	NTE139A	ECG139A	SK9V1																																																																																																																																																																																																																																																																																																																																																																																																																																																																																																																																																																																																										
D501	RU-1	-	NTE552	ECG552	SK9000																																																																																																																																																																																																																																																																																																																																																																																																																																																																																																																																																																																																										
	RU-1V	46-86507-3	NTE552	ECG552	SK9000																																																																																																																																																																																																																																																																																																																																																																																																																																																																																																																																																																																																										
(2)	RGP100TA	46-861634-3	-	-	-																																																																																																																																																																																																																																																																																																																																																																																																																																																																																																																																																																																																										
D502	Z9.1BLTA	46-86953-3	NTE139A	ECG139A	SK9V1																																																																																																																																																																																																																																																																																																																																																																																																																																																																																																																																																																																																										
(2)	Z9.1B	46-861159-3	NTE139A	ECG139A	SK9V1																																																																																																																																																																																																																																																																																																																																																																																																																																																																																																																																																																																																										
# D561	RU-1	-	NTE552	ECG552	SK9000																																																																																																																																																																																																																																																																																																																																																																																																																																																																																																																																																																																																										
	RU-1V	46-86507-3	NTE552	ECG552	SK9000																																																																																																																																																																																																																																																																																																																																																																																																																																																																																																																																																																																																										
(2)	RGP100TA	46-861634-3	-	-	-																																																																																																																																																																																																																																																																																																																																																																																																																																																																																																																																																																																																										
# D801 Thru																																																																																																																																																																																																																																																																																																																																																																																																																																																																																																																																																																																																															
# D805	1N4004TA	86-67-3	NTE116	ECG116	SK3312																																																																																																																																																																																																																																																																																																																																																																																																																																																																																																																																																																																																										
D806	Z11BLTA	46-861336-3	NTE5020A	ECG5020A	SK11A																																																																																																																																																																																																																																																																																																																																																																																																																																																																																																																																																																																																										
(2)	Z11BMTA	46-861336-3	-	ECG5020A	-																																																																																																																																																																																																																																																																																																																																																																																																																																																																																																																																																																																																										
D807	1S2471/TA	46-86309-3	NTE177	ECG177	SK9091																																																																																																																																																																																																																																																																																																																																																																																																																																																																																																																																																																																																										
D808	Z5.1BTA	46-86915-3	NTE5010A	ECG5010A	SK5A1																																																																																																																																																																																																																																																																																																																																																																																																																																																																																																																																																																																																										
# D809	1S2471/TA	46-86309-3	NTE177	ECG177	SK9091																																																																																																																																																																																																																																																																																																																																																																																																																																																																																																																																																																																																										
D810	1N4004TA	86-67-3	NTE116	ECG116	SK3312																																																																																																																																																																																																																																																																																																																																																																																																																																																																																																																																																																																																										
D901	RU-1	-	NTE552	ECG552	SK9000																																																																																																																																																																																																																																																																																																																																																																																																																																																																																																																																																																																																										
	RU-1V	46-86507-3	NTE552	ECG552	SK9000																																																																																																																																																																																																																																																																																																																																																																																																																																																																																																																																																																																																										
(2)	RGP100TA	46-861634-3	-	-	-																																																																																																																																																																																																																																																																																																																																																																																																																																																																																																																																																																																																										
D902	1S2471/TA	46-86309-3	NTE177	ECG177	SK9091																																																																																																																																																																																																																																																																																																																																																																																																																																																																																																																																																																																																										
IC1	GS8908-02B	46-133565-3	-	-	-																																																																																																																																																																																																																																																																																																																																																																																																																																																																																																																																																																																																										
(2)(3)	GS8908-02C	46-133677-3	-	-	-																																																																																																																																																																																																																																																																																																																																																																																																																																																																																																																																																																																																										
IC2	NMC9346	46-133566-3	-	-	-																																																																																																																																																																																																																																																																																																																																																																																																																																																																																																																																																																																																										
IC201	TA8680N	46-132931-3	NTE7010	ECG7010	SK10479																																																																																																																																																																																																																																																																																																																																																																																																																																																																																																																																																																																																										
IC301	LA7830	46-131208-3	NTE1773	ECG1773	SK9752																																																																																																																																																																																																																																																																																																																																																																																																																																																																																																																																																																																																										
# IC801	STR30130	6125860002	NTE1777	ECG1777	SK9870																																																																																																																																																																																																																																																																																																																																																																																																																																																																																																																																																																																																										
Q1	KTA1015-Y(TA)	46-86679-3	NTE290A	ECG290A	SK9132																																																																																																																																																																																																																																																																																																																																																																																																																																																																																																																																																																																																										
Q2 Thru																																																																																																																																																																																																																																																																																																																																																																																																																																																																																																																																																																																																															
Q5	KTC1815-Y(TA)	46-86682-3	NTE85	ECG85	SK9229																																																																																																																																																																																																																																																																																																																																																																																																																																																																																																																																																																																																										
#	For SAFETY use only equivalent replacement part.																																																																																																																																																																																																																																																																																																																																																																																																																																																																																																																																																																																																														
(1)	Used in some versions.																																																																																																																																																																																																																																																																																																																																																																																																																																																																																																																																																																																																														
(2)	Used in models 580.40472090 and 580.40472091.																																																																																																																																																																																																																																																																																																																																																																																																																																																																																																																																																																																																														
(3)	Used in model 580.42052092.																																																																																																																																																																																																																																																																																																																																																																																																																																																																																																																																																																																																														
Item No.	Type No.	Mfr. Part No.	NTE Part No.	ECG Part No.	TCE Part No.																																																																																																																																																																																																																																																																																																																																																																																																																																																																																																																																																																																																										
Q6	KTA1015-Y(TA)	46-86679-3	NTE290A	ECG290A	SK9132																																																																																																																																																																																																																																																																																																																																																																																																																																																																																																																																																																																																										
Q101	KTC388A(TA)	46-86535-3	NTE85	ECG85	SK9229																																																																																																																																																																																																																																																																																																																																																																																																																																																																																																																																																																																																										
Q201	KTA562TM-Y(TA)	46-86805-3	NTE290A	ECG290A	SK3114A																																																																																																																																																																																																																																																																																																																																																																																																																																																																																																																																																																																																										
Q202	KTC1815-Y(TA)	46-86682-3	NTE85	ECG85	SK9229																																																																																																																																																																																																																																																																																																																																																																																																																																																																																																																																																																																																										
Q252	KTA1015-Y(TA)	46-86679-3	NTE290A	ECG290A	SK9132																																																																																																																																																																																																																																																																																																																																																																																																																																																																																																																																																																																																										
Q401	KTC2482(TA)	46-86630-3	NTE399	ECG399	SK9352																																																																																																																																																																																																																																																																																																																																																																																																																																																																																																																																																																																																										
# Q402	2SD1555	46-861453-3	NTE2331	ECG2331	SK9422																																																																																																																																																																																																																																																																																																																																																																																																																																																																																																																																																																																																										
(2)	2SD1554	46-861627-3	NTE2302	ECG2302	SK9422																																																																																																																																																																																																																																																																																																																																																																																																																																																																																																																																																																																																										
Q561, 62, 63	KTC2482	46-86630-3	NTE399	ECG399	SK3244																																																																																																																																																																																																																																																																																																																																																																																																																																																																																																																																																																																																										
Q801, 02	KTC1815-Y(TA)	46-86682-3	NTE85	ECG85	SK9229																																																																																																																																																																																																																																																																																																																																																																																																																																																																																																																																																																																																										
Q803	KTA1015-Y(TA)	46-86679-3	NTE290A	ECG290A	SK9132																																																																																																																																																																																																																																																																																																																																																																																																																																																																																																																																																																																																										
Q901	KTC2120-Y(TR)	46-86589-3	NTE289A	ECG289A	SK3124A																																																																																																																																																																																																																																																																																																																																																																																																																																																																																																																																																																																																										
Q902	KTA950-Y(TA)	46-86574-3	NTE294	ECG294	SK3841																																																																																																																																																																																																																																																																																																																																																																																																																																																																																																																																																																																																										
Q903	KTC1815-Y(TA)	46-86682-3	NTE85	ECG85	SK9229																																																																																																																																																																																																																																																																																																																																																																																																																																																																																																																																																																																																										
#	For SAFETY use only equivalent replacement part.																																																																																																																																																																																																																																																																																																																																																																																																																																																																																																																																																																																																														
(2)	Used in models 580.40472090 and 580.40472091																																																																																																																																																																																																																																																																																																																																																																																																																																																																																																																																																																																																														
Item No.	Function/Rating	Mfr. Part No.																																																																																																																																																																																																																																																																																																																																																																																																																																																																																																																																																																																																													
# DY1	Yoke 90°	46-801662-3																																																																																																																																																																																																																																																																																																																																																																																																																																																																																																																																																																																																													
	Horiz1.9mH																																																																																																																																																																																																																																																																																																																																																																																																																																																																																																																																																																																																														
	Vert24.7mH																																																																																																																																																																																																																																																																																																																																																																																																																																																																																																																																																																																																														
(2)	Yoke 90°	46-801729-3																																																																																																																																																																																																																																																																																																																																																																																																																																																																																																																																																																																																													
(3)	Yoke 90°	46-801667-3																																																																																																																																																																																																																																																																																																																																																																																																																																																																																																																																																																																																													
(4)	Yoke 90°	153-113J																																																																																																																																																																																																																																																																																																																																																																																																																																																																																																																																																																																																													
L1	Oscillator 6.5MHz	46-103386-3																																																																																																																																																																																																																																																																																																																																																																																																																																																																																																																																																																																																													
L101	.79mH	46-102646-3																																																																																																																																																																																																																																																																																																																																																																																																																																																																																																																																																																																																													
L103	AFT	46-102765-3																																																																																																																																																																																																																																																																																																																																																																																																																																																																																																																																																																																																													
L181	AFT	46-103387-3																																																																																																																																																																																																																																																																																																																																																																																																																																																																																																																																																																																																													
L201	33µH	46-102795-3																																																																																																																																																																																																																																																																																																																																																																																																																																																																																																																																																																																																													
L251	12µH	46-102810-3																																																																																																																																																																																																																																																																																																																																																																																																																																																																																																																																																																																																													
(5)	15µH	46-101298-3																																																																																																																																																																																																																																																																																																																																																																																																																																																																																																																																																																																																													
# L403	180mH	46-103390-3																																																																																																																																																																																																																																																																																																																																																																																																																																																																																																																																																																																																													
# L404	Horizontal Linearity	46-103391-3																																																																																																																																																																																																																																																																																																																																																																																																																																																																																																																																																																																																													
(5)	Horizontal Linearity	46-103417-3																																																																																																																																																																																																																																																																																																																																																																																																																																																																																																																																																																																																													
L601	SIF	46-103392-3																																																																																																																																																																																																																																																																																																																																																																																																																																																																																																																																																																																																													
L602	27µH	46-103340-3																																																																																																																																																																																																																																																																																																																																																																																																																																																																																																																																																																																																													
# L801	Degaussing	46-102640-3																																																																																																																																																																																																																																																																																																																																																																																																																																																																																																																																																																																																													
(2)	Degaussing	46-103474-3																																																																																																																																																																																																																																																																																																																																																																																																																																																																																																																																																																																																													
(5)	Degaussing	46-103418-3																																																																																																																																																																																																																																																																																																																																																																																																																																																																																																																																																																																																													
# T401	Horizontal Drive	46-801326-3																																																																																																																																																																																																																																																																																																																																																																																																																																																																																																																																																																																																													
# T403 (1)	Horizontal Output	46-801621-3																																																																																																																																																																																																																																																																																																																																																																																																																																																																																																																																																																																																													
(1)(2)	Horizontal Output	46-801728-3																																																																																																																																																																																																																																																																																																																																																																																																																																																																																																																																																																																																													
(1)(3)	Horizontal Output	46-801665-3																																																																																																																																																																																																																																																																																																																																																																																																																																																																																																																																																																																																													
# T801	Line Filter	46-102625-3																																																																																																																																																																																																																																																																																																																																																																																																																																																																																																																																																																																																													
(5)	Line Filter	46-102771-3																																																																																																																																																																																																																																																																																																																																																																																																																																																																																																																																																																																																													
#	For SAFETY use only equivalent replacement part.																																																																																																																																																																																																																																																																																																																																																																																																																																																																																																																																																																																																														
(1)	Focus and screen controls are part of T403.																																																																																																																																																																																																																																																																																																																																																																																																																																																																																																																																																																																																														
(2)	Used in model 580.42052092.																																																																																																																																																																																																																																																																																																																																																																																																																																																																																																																																																																																																														
(3)	Used in model 580.40472090.																																																																																																																																																																																																																																																																																																																																																																																																																																																																																																																																																																																																														
(3)	Used in model 580.40472091.																																																																																																																																																																																																																																																																																																																																																																																																																																																																																																																																																																																																														
(4)	Used in models 580.40472090 and 580.40472091.																																																																																																																																																																																																																																																																																																																																																																																																																																																																																																																																																																																																														
<div>Obtaining Parts</div> <div>Many of these parts are available from your local Sams authorized distributor or the manufacturer of the equipment. Call Sams for the name of your nearest distributor:</div> <div>800-428-7267</div> <div>Or consult the Sams Annual Index for the address of the original equipment manufacturer.</div>																																																																																																																																																																																																																																																																																																																																																																																																																																																																																																																																																																																																															
<div>Participating Vendors</div> <div>Information on test equipment and replacement parts is listed in these pages for the following participating vendors. Consult the Sams Annual Index for their current address.</div> <div><ul style="list-style-type: none"><li>Custom Components Corporation (Chek-A-Color)</li><li>NTE Electronics, Inc. (NTE)</li><li>Phillips ECG Company (ECG)</li><li>PTS Electronics Corporation (PTS)</li><li>Sencore, Inc.</li><li>Thomson Consumer Electronics, Inc. (SK, TCE)</li></ul></div>																																																																																																																																																																																																																																																																																																																																																																																																																																																																																																																																																																																																															

CAPACITORS & ELECTROLYTICS

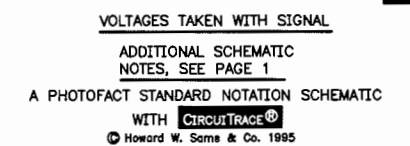
Item No.	Rating	Mfr. Part No.
# C308	.1 10% 100V	46-201614-3
# C411	1µF 20% 250V	46-18967-3
# C412	.0047 10% 50V	46-20956-3
# C414	.0082 5% 1.6kV	20-825-1
(1)	.006 1.6kV	46-201-844-3
# C417	.39 5% 200V	46-201059-3
(1)	.27 5% 200V	46-201519-3
# C471	33µF 20% 25V	46-18559-3
# C472	4.7µF 20% 50V	46-18429-3
C564	.0022 10% 1kV	46-201719-3
(1)	.0022 10% 1kV	12-222814-6
# C801	.2 125VAC	46-231812-3
(1)	.1 125VAC	20-817-1
# C802	.0022 10% 500V	12-222711-6
# C804	470µF 200V	46-18690-3
# C807	4.7µF 20% 160V	46-18756-3
(1)	4.7µF 20% 160V	112393200
# C809	33µF 160V	46-18755-3
CA1	470pF 20% X 5 Network	46-133564-3
#	For SAFETY use only equivalent replacement part.	
(1)	Used in models 580.40472090 and 580.40472091.	



Created with pride by the employees of Howard W. Sams & Company.

J. Barker, N. Beck, B. Bryant,  
B. Buchanan, T. Clensy,  
D. Cobb, G. Farrell, B. Fink,  
M. Herkless, J. Kocha,  
F. Malek, B. Medaris,  
R. Raus, B. Skinner, J. Young





PARTS LIST continued

CONTROLS & RESISTORS			
Item No.	Function/Rating	Mfr. Part No.	NTE Part No.
# R308	430 5% 1/2W	64-43105	HW143
# R309	1000 5% 1/6W	46-601025-3	-
# R310	3.3 5% 1/2W Fusible	46-61570-3	-
# R408	.47 5% 1/2W	46-681-3	HWD47
	.47 5% 1/2W	46-611078-3	HWD47
# R413	100 5% 1/2W Fusible	46-61438-3	-
# R471	5.6 5% 1/6W	46-605695-3	-
# R472	2200 5% 1/6W	46-602225-3	-
# R473	3300 5% 1/6W	46-603325-3	-
# R474	2700 5% 1/6W	46-602725-3	-
# R501	2 5% 1W Fusible	46-611118-3	F1W2D0
# R502 (1)	2 5% 1W Fusible	46-611118-3	F1W2D0
# R511	3 5% 2W Fusible	46-61479-3	F2W3D0
(2)	1.6 5% 2W Fusible	46-61583-3	F2W1D6
# R801	1 5% 7W Wirewound	46-611114-3	-
# R802	220K 5% 1/2W	64-22405	HW422
# R803	5.6 5% 5W Wirewound	46-61875-3	-
# R804	180 5% 25W Wirewound	46-611347-3	25W118
# R805	6800 5% 1/2W	46-6892-3	HW268
(2)	6800 5% 1/2W	46-68445-3	HW268
# R806	22 5% 1/2W	46-68279-3	HW022
# R807	470K 5% 1/2W	64-47405	HW447
# R808	6800 5% 1/2W	46-6892-3	HW268
(2)	6800 5% 1/2W	46-68445-3	HW268
# R816	7 Cold PTC	46-611116-3	-
# R818 Thru			
# R825	390 5% 1/2W	46-6825-3	HW139
(2)	390 5% 1/2W	3009391275	HW139
# R901	4.7 5% 1/2W Fusible	46-61902-3	-
R902	15 5% 1/2W Fusible	46-611348-3	-
VR151	10K AGC	46-241036-3	-
VR311	10K Vertical Size	46-241036-3	-
VR505	22K 3.58MHz Oscillator	46-242089-3	-
VR561	300 Blue Drive	46-241881-3	-
VR565	4700 Red Bias	-	-
	5000 Red Bias	46-241766-3	-
VR571	300 Red Drive	46-241881-3	-
VR573	4700 Green Bias	-	-
	5000 Green Bias	46-241766-3	-
VR574	4700 Blue Bias	-	-
	5000 Blue Bias	46-241766-3	-
# For SAFETY use only equivalent replacement part.			
(1) Used in models 580.42052090, 580.42052091, and 580.42052092.			
(2) Used in models 580.40472090 and 580.40472091.			

MISCELLANEOUS			
Item No.	Description	Mfr. Part No.	Notes
# F801	Fuse	STD387315	3Amp, 125V, Slow Blow
# F802	Fuse	STD385100	1Amp, 125V, Fast Acting
# P801	Line Cord	46-23674-3	AC, Polarized
# RL801	Relay	46-692828-3	Power
(2)	Relay	46-691828-3	Power
SP1	Speaker	46-33750-3	-
(2)	Speaker	46-331287-3	16 Ohms, 1.5W
SW1	Switch	46-691824-3	Power
SW2	Switch	46-691824-3	Volume Up
SW3	Switch	46-691824-3	Volume Down
SW4	Switch	46-691824-3	Channel Up
SW5	Switch	46-691824-3	Channel Down
SW6	Switch	46-691824-3	P-Mode
SW7	Switch	46-691824-3	TV/CATV
SW8	Switch	46-691824-3	APC
SW201	Switch	46-691825-3	Service
TU01 (1)	Tuner	46-95409-3	TERH7X028A
# V501	CRT	-	510UEB22
(2)	CRT	-	A34KFC42XX
(3)	CRT	-	A48ACB24X
X1	Filter	46-331266-3	4.0MHz
X401	Filter	46-331267-3	Resonator
X501	Crystal	46-33733-3	3.58MHz
Z101	Filter	46-133569-3	SAW
Z201	Filter	46-23666-3	Delay Line
Z251	Filter	46-132199-3	4.5MHz
Z601	Filter	46-131984-3	4.5MHz
	Adapter	46-101612-3	Antenna
			75 to 300 Ohms
	Antenna	46-82117-3	Rod
	PC Board (1)	46-354601-3	CRT
	PC Board (1)	46-354271-3	Main
	PC Board (1)(2)	46-354488-3	Main
	PC Board (1)(3)	46-354916-3	Main
	Receiver	46-841077	Remote
#	CRT Socket	46-451854-3	-
#	CRT Socket (2)	46-451165-3	-
#	CRT Socket (4)	46-452239-3	-
	Transmitter	46-841078-3	Remote
	Transmitter (4)	46-841200-3	Remote
# For SAFETY use only equivalent replacement part.			
(1) Contact PTS Electronics Corporation for replacement; order by manufacturer's part number.			
(2) Used in models 580.40472090 and 580.40472091.			
(3) Used in model 580.42052092.			
(4) Used in model 580.40472091.			

TEST EQUIPMENT			
Test equipment listed by participating manufacturer illustrates typical or equivalent equipment used by Sams engineers to obtain measurements. This equipment is compatible with most types used by field service technicians.			
Equipment	Sencore No.	Equipment	Sencore No.
Oscilloscope	SC3100	Isolation Transformer	PR57
Generators		Capacitance Analyzer	LC101, LC102
RGB	CM2000	CRT Analyzer	CR70
Multiburst Signal	VG91	AC Leakage Tester	PR57
Color Bar	VG91	Inductance Analyzer	LC101, LC102
TV Stereo	VG91	Flyback Yoke Tester	TVA92
Digital VOM	SC3100	TV Stereo Power Monitor	SR68, PA81
Frequency Meter	SC3100	Field Strength Meter	SL750
Hi-Voltage Probe	HP200	Transistor Tester	TF46
Accessory Probes	TP212	Video Analyzer	VG91, TVA92

CABINET PARTS	
Item	Mfr. Part No.
<b>MODEL 580.40472090</b>	
Complete Assembly	46-42868-3
Cabinet Rear	46-42867-3
Button Selection Assembly	46-522916-3
<b>MODEL 580.40472091</b>	
Complete Assembly	46-42881-3
Cabinet Rear	46-42867-3
Button Selection Assembly	46-523050-3
<b>MODEL 580.42052090</b>	
Complete Assembly	46-42858-3
Cabinet Rear	46-42857-3
Button Selection Assembly	46-522841-3
<b>MODEL 580.42052091</b>	
Complete Assembly	46-42858-3
Cabinet Rear	46-42857-3
Button Selection Assembly	46-522841-3
<b>MODEL 580.42052092</b>	
Complete Assembly	46-42891-3
Cabinet Rear	46-42890-3
Button Selection Assembly	46-522841-3
<b>Remote Transmitter</b>	
Battery Cover	46-213050-3

VOLTAGES TAKEN WITH SIGNAL  
ADDITIONAL SCHEMATIC  
NOTES, SEE PAGE 1  
A PHOTOFACIT STANDARD NOTATION SCHEMATIC  
WITH CIRCUITRACE®  
© Howard W. Sams & Co. 1985

