

CABINET-REAR VIEW

HORIZONTAL SWEEP CIRCUIT ADJUSTMENTS

Tune set to active channel. Set Horizontal Hold Control to center of its range. Short across Stabilizer Coil, L14. Connect a VTVM to pin 7 of V8. Adjust Horizontal Frequency Control, R8, so picture is in sync and VTVM reads +.9 volts.

Remove short across L14 and adjust B1 until picture is in sync and VTVM reads 0 volts. Remove VTVM.

DISASSEMBLY INSTRUCTIONS

TV CHASSIS REMOVAL

1. Remove 6 screws holding back cover and remove back cover. On some models it may be necessary to disconnect antenna leads. Remove all knobs.
2. Disconnect yoke plug, high voltage anode lead, picture tube socket, speaker leads, and ground wire.
3. Remove 2 screws holding chassis and 10 screws holding tuner and controls.

4. Lift out chassis and tuner.

NOTE: Most components may be serviced without removing chassis.

PICTURE TUBE REMOVAL

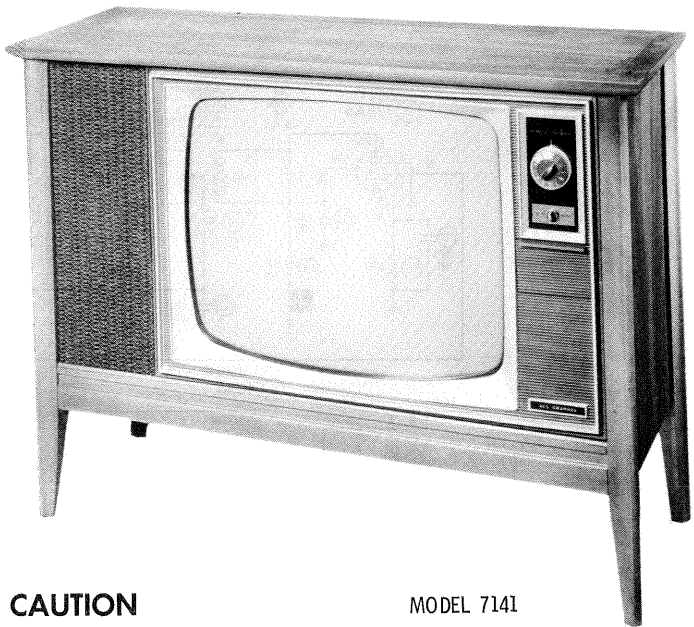
1. Follow "Chassis Removal" procedure. Lay set face down on a soft protective surface.
2. Remove spring holding picture tube retainer wire, and lift out picture tube. Do not lift out by the neck of the tube.

SET 838 FOLDER 4

SEARS SILVERTONE CHASSIS
456.70280, 528.70280, 529.70280

PHOTOFACT® Folder

with CIRCUITRACE®



CAUTION
ONE SIDE OF AC LINE CONNECTED TO CHASSIS

MODEL 7141

TRADE NAME	Sears Silvertone	Models	Chassis
		PC-7128, PC-7131, PC-7132, PC-7133, PC-7140, PC-7141, PC-7142, PC-7143	456.70280
		7128, 7131, 7132, 7133, 7140, 7141, 7142, 7143	528/529.70280
SUPPLIER	For current address, see Annual Index.		
TYPE SET	Television Receiver		
TUBES	VHF: Fourteen, UHF: One Transistor		
POWER SUPPLY	110-120 Volts AC, 60 Cycles		
TUNING RANGE	Channels 2 thru 13 VHF, 14 thru 83 UHF, Video IF 45.75MC, Sound IF 41.25MC (Intercarrier)		
		RATING	120 Watts, 1.3 Amps. @ 117 Volts AC

SERVICING IN THE FIELD

SAFETY GLASS

The safety glass is an integral part of the picture tube.

FUSE OR FUSE DEVICE

A Circuit Breaker is used for low voltage power supply protection and may be reset by depressing the reset button. (See "Tube Placement Chart" for location.)

VHF OSCILLATOR ADJUSTMENT

Set Fine Tuning at the center of its range and adjust oscillator slug (one for each channel) for best sound and picture.

AGC

No provision is made to vary the AGC on this receiver.

HORIZONTAL OSCILLATOR FIELD ADJUSTMENT

Coarse adjustment of the horizontal hold is accomplished by the proper setting of the Horizontal Frequency Control and Horizontal Stabilizer Coll. (For location, see "Tube Placement Chart".)

WIDTH

The width may be varied by adjusting a metallic sleeve, located between the yoke and the picture tube neck.

FOCUS

The focus may be varied by connecting the lead from pin 4 of the picture tube to various voltage points.

CENTERING

Centering is accomplished by 2 magnetic rings located on yoke rear cover.

SEARS SILVERTONE CHASSIS
456.70280, 528.70280, 529.70280

SET 838 FOLDER 4

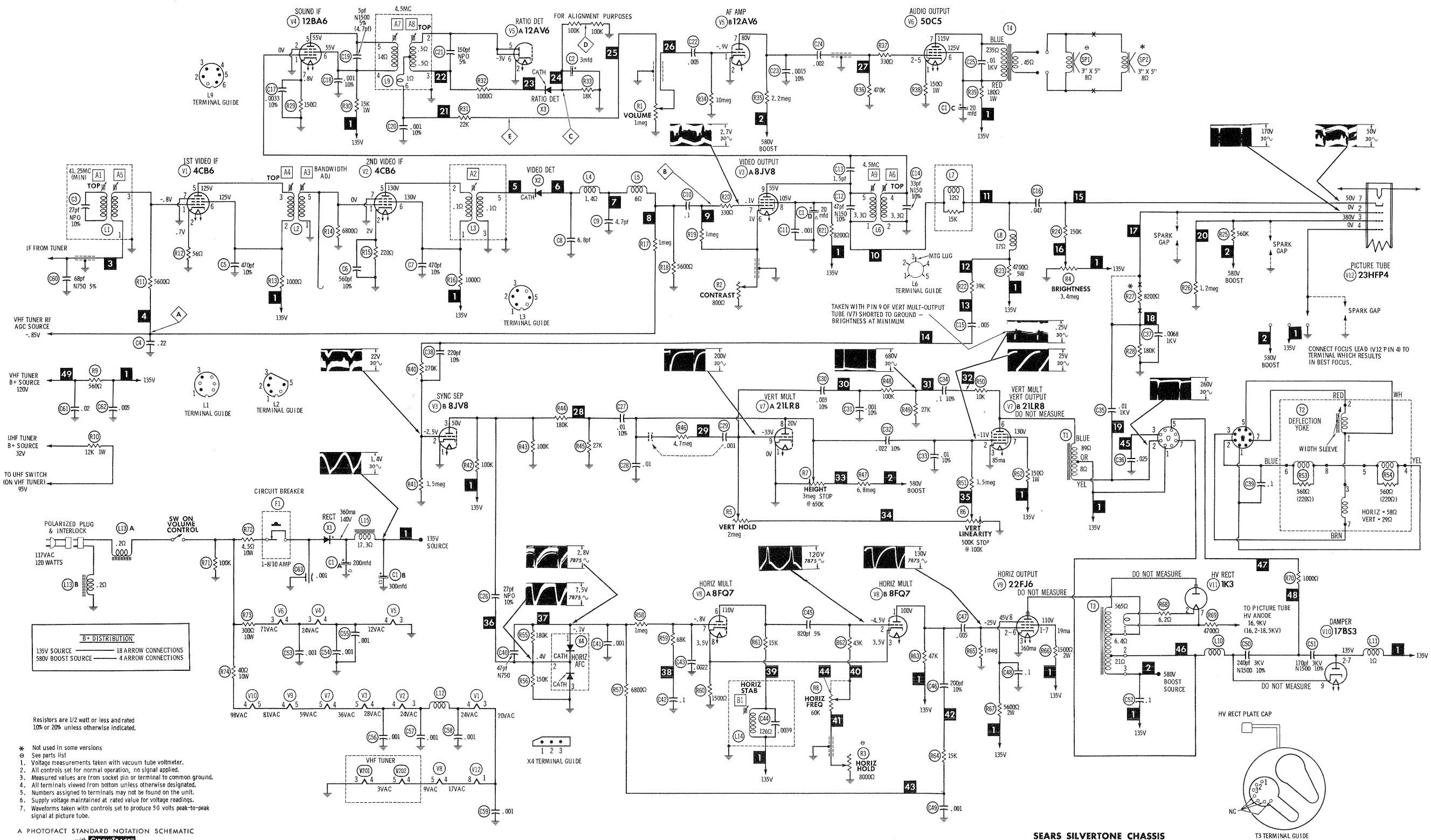
HOWARD W. SAMS & CO., INC. Indianapolis, Indiana 46206



The listing of any available replacement part herein does not constitute in any case a recommendation, warranty or guaranty by Howard W. Sams & Co., Inc., as to the quality and suitability of such replacement part. The numbers of these parts have been compiled from information furnished to Howard W. Sams & Co., Inc., by the manufacturers of the particular type of replacement part listed. NA845

Reproduction or use, without express permission, of editorial or pictorial content, in any manner, is prohibited. No patent liability is assumed with respect to the use of the information contained herein. © 1966 Howard W. Sams & Co., Inc., Indianapolis, Indiana 46206. Printed in U. S. of America

DATE 9 -66 SET 838 FOLDER 4

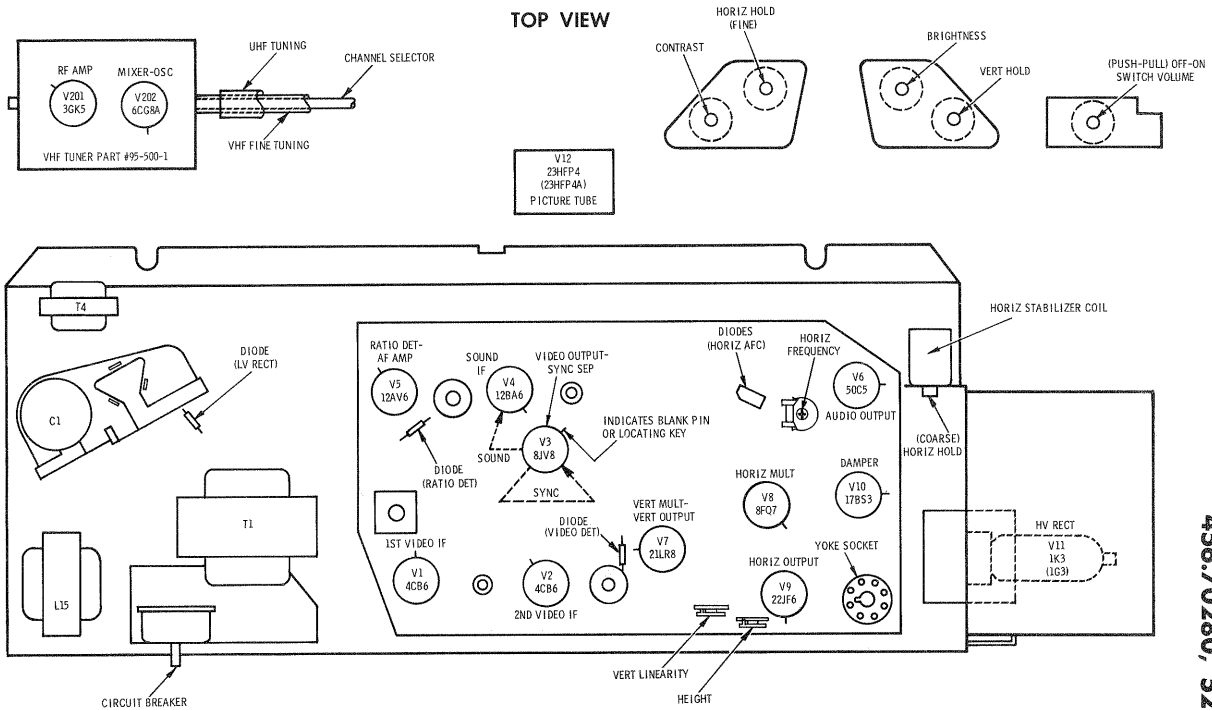


RESISTANCE MEASUREMENTS

ITEM	TUBE	Pin 1	Pin 2	Pin 3	Pin 4	Pin 5	Pin 6	Pin 7	Pin 8	Pin 9
V1	4CB6	690K	56Ω	8Ω	9Ω	1017Ω †	1017Ω †	0Ω		
V2	4CB6	0Ω	220Ω	9Ω	10Ω	1017Ω †	1017Ω †	0Ω		
V3	8JV8	0Ω	1.5meg	32K †	10Ω	12Ω	45Ω	1meg	8200Ω †	4600Ω †
V4	12BA6	5Ω	0Ω	20Ω	13Ω	15K †	15K †	150Ω		
V5	12AV6	10meg	0Ω	0Ω	13Ω	240K	240K	2.2meg ‡		
V6	50C5	150Ω	470K	55Ω	20Ω	NC	200Ω †	432Ω †		
V7	21LR8	0Ω	2.1meg	0Ω	12Ω	17Ω	106Ω †	170Ω †	2.3meg	750K
V8	8FQ7	47K †	60K	1500Ω	6Ω	3Ω	15K †	1.5meg	1500Ω	NC
V9	22FJ6	1500Ω †	NC	0Ω	24Ω	17Ω	1meg	NC	5600Ω †	NC
V10	17BS3	NC	20Ω †	NC	29Ω	24Ω	NC	20Ω †	NC	1.5mea
V11	1K3	PINS 1 THRU 8 HAVE INFINITE RESISTANCE								TOP CAP 6.4Ω ‡
V12	23HFP4	8Ω	188K	550K †	0Ω	0Ω	NC	1.1meg	6Ω	
V201	3GK5	0Ω	1.1meg	0Ω	1Ω	1800Ω †	0Ω	0Ω		
V202	6CG8A	15K	5200Ω †	0Ω	3Ω	1Ω	1600Ω †	14K †	0Ω	220K
ITEM	TUBE	Pin 1	Pin 2	Pin 3	Pin 4	Pin 5	Pin 6	Pin 7	Pin 8	Pin 9

† MEASURED FROM OUTPUT OF X1.
‡ MEASURED FROM PIN 9 OF V10.
NC NO CONNECTION

TUBE PLACEMENT CHART



TUBE FAILURE CHECK CHART

The following chart lists tubes whose failures are most likely to produce indicated symptoms. Refer to tube placement chart for location and type of tube.

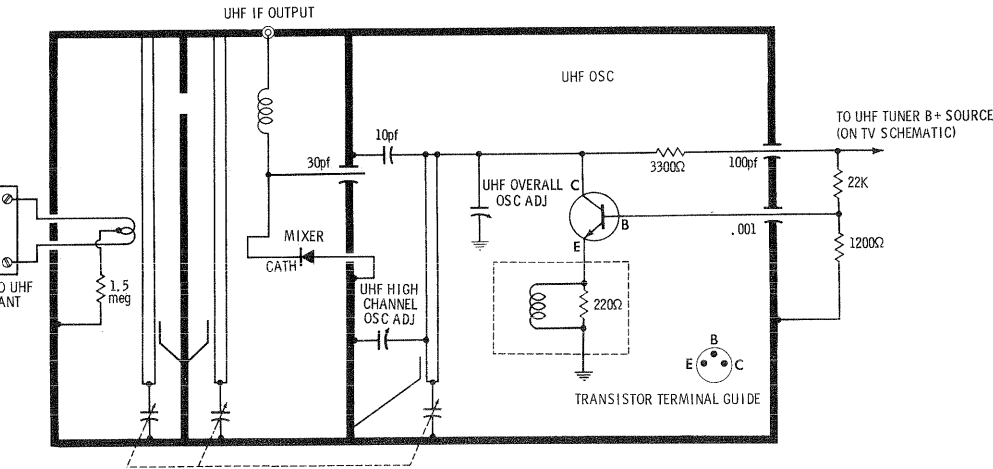
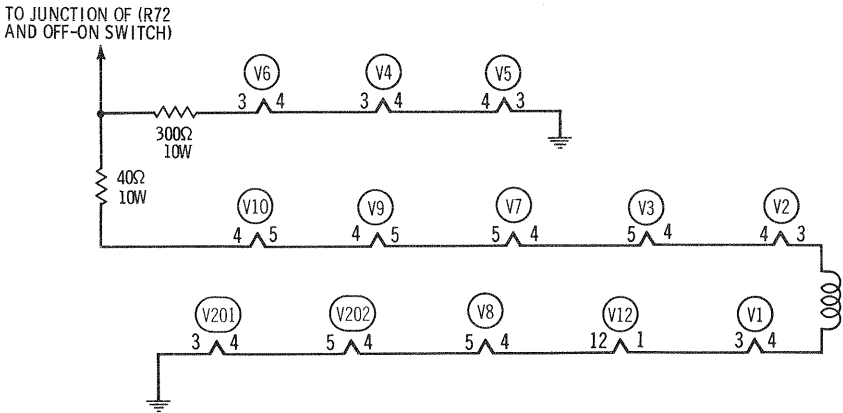
POWER SUPPLY FAILURE
No raster, no sound Circuit Breaker F1, Rectifier X1

SWEEP FAILURE
No raster, has sound V8, V9, V10, V11, V12
No vertical deflection V7
Poor vert. linearity or foldover V7
Poor horiz. linearity or foldover V8, V9, V10
Narrow picture V8, V9, V10, X1
Vert. off freq. V7
Horiz. off freq. AFC Diode X11, V8

LOSS OF PICTURE OR SOUND
No pic, no sound, has raster V1, V2, Video Det. X2, V3
No pic, no sound, has snow V201, V202, V1
No pic, has sound, has raster V3, V12
Has pic, no sound V4, V5, V6
Overloaded picture V3

SYNC FAILURE
No vert. sync V3
No horiz. sync V3
No vert. or horiz. sync V3

This receiver employs tubes used in a series filament network, an open filament in any tube will cause the set to be inoperative. (See circuit below.)

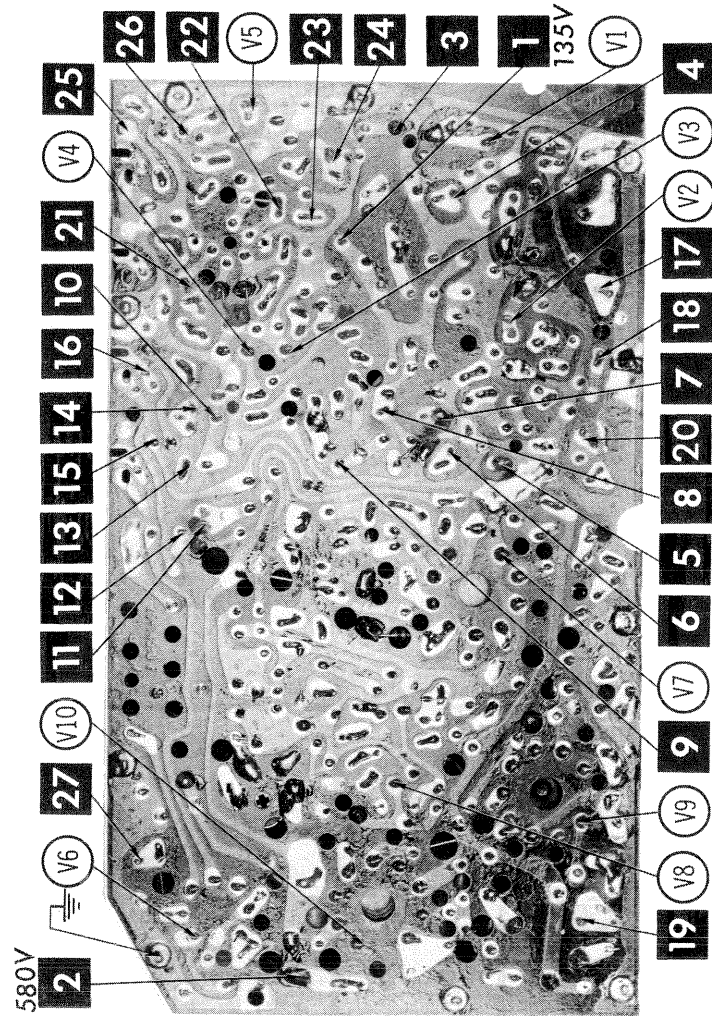
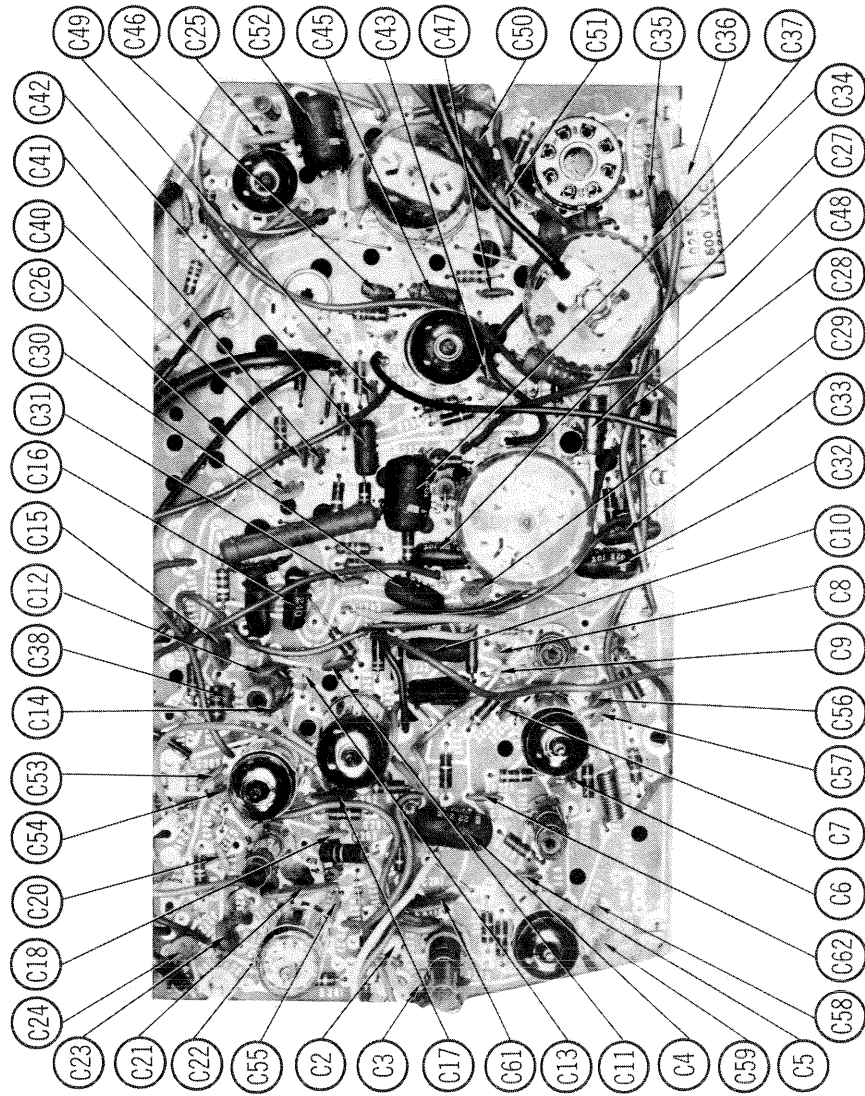
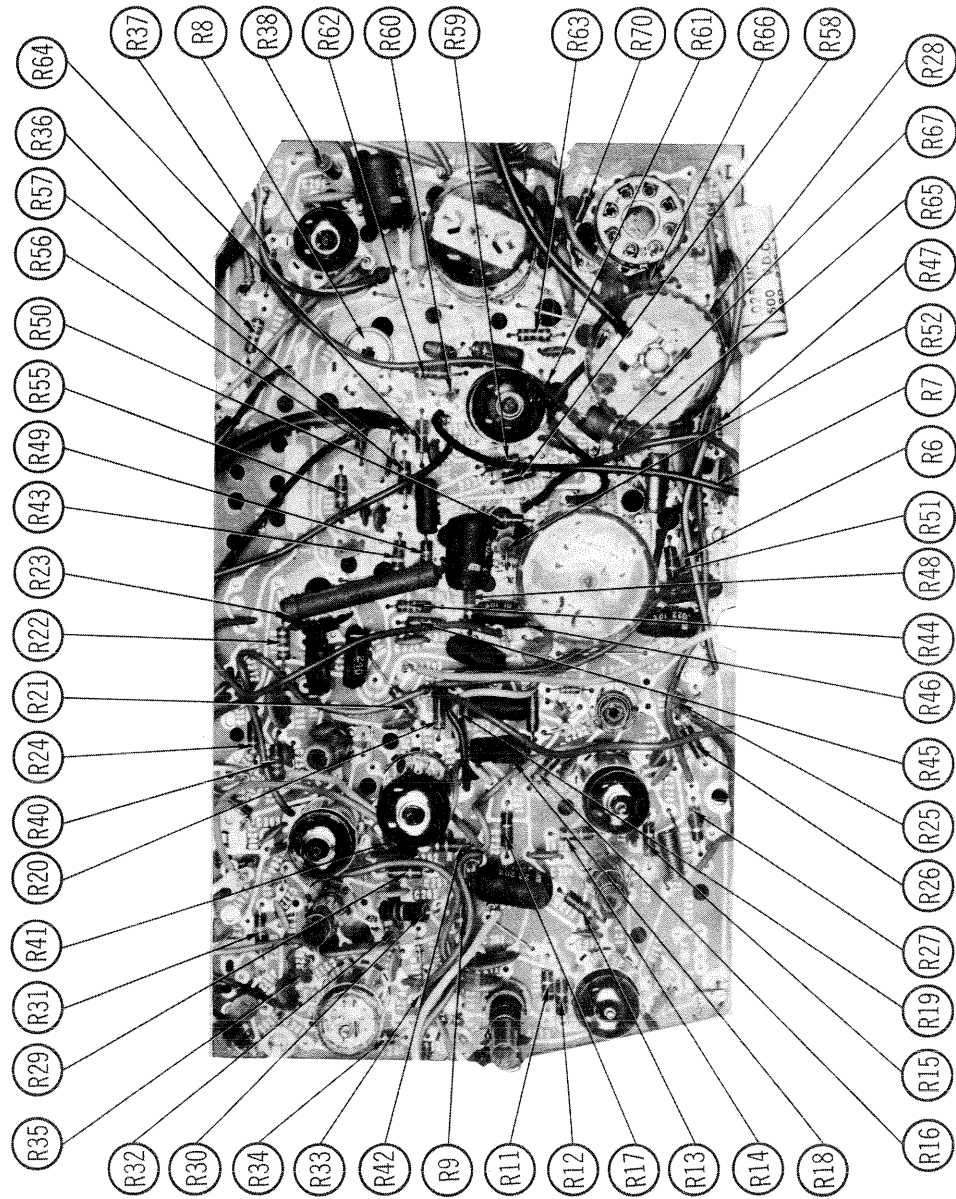


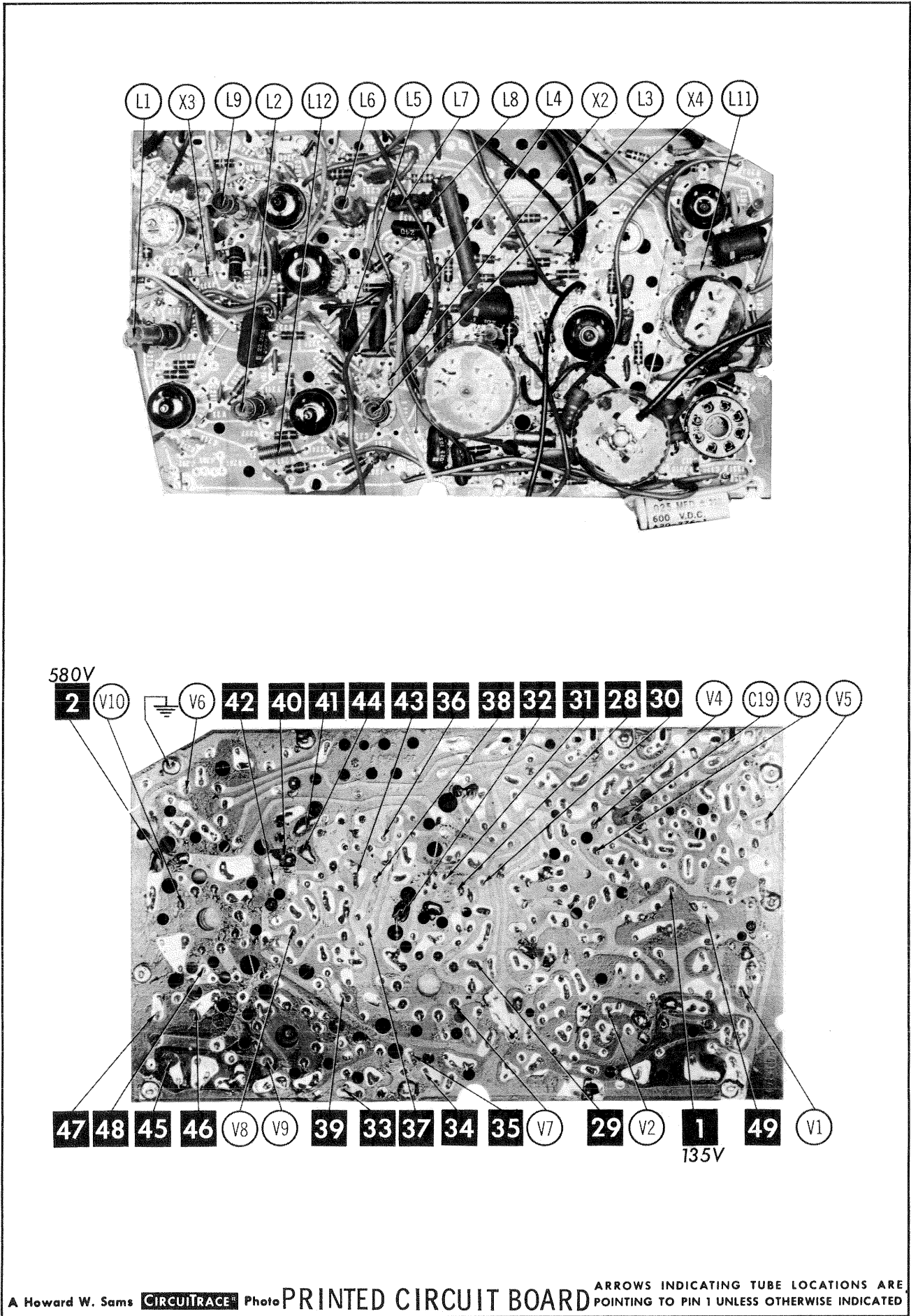
A PHOTOFAC STANDARD NOTATION SCHEMATIC
© Howard W. Sams & Co., Inc. 1966
UHF TUNER PART #95-580-2

UHF TUNER 95-580-2

SEARS SILVERTONE CHASSIS
456.70280, 528.70280, 529.70280

FOLDER 4





ALIGNMENT INSTRUCTIONS

Use an isolation transformer and maintain voltage at 117 volts. Allow a 20-minute warm-up period for the receiver and test equipment.
Suggested Alignment Tools: A1 thru A5 GENERAL CEMENT #8606, 8606L, 8869 ... WALSCO #2543, 2544, 2588
Mixer Plate Coil .. GENERAL CEMENT #9296, 9297, 9300 WALSCO #2510, 2546, 2547

VIDEO IF ALIGNMENT

Connect the synchronized sweep voltage from the sweep generator to the horizontal input of the oscilloscope for horizontal deflection. Use only enough generator output to provide a usable indication. Note: Response may vary slightly from those shown. Connect a variable bias supply to the IF AGC line (point A) and adjust to obtain a response curve which shows no indication of overload. Disable Oscillator section of Mixer-Osc. Set the Channel Selector to any non-interfering channel.

INDICATOR	GENERATOR COUPLING	SWEEP GENERATOR FREQUENCY	MARKER GENERATOR FREQUENCY	ADJUST	REMARKS
1.	Connect DC probe of a VTVM thru a 47K resistor to point B. Common to ground.		41.25MC	A1	Adjust for MINIMUM.
2.	Connect vertical input of a scope to point B. Low side to ground.	44MC (10MC Sweep)	44.25MC 42.75MC 45.75MC	A2 A3 A4	Adjust for maximum amplitude and MINIMUM tilt with markers as shown in Figure 1.
3.	Connect vertical 1 input of a scope to point B. Low side to ground.	44MC (10MC Sweep)	41.25MC 42.75MC 44.25MC 45.75MC	A5 Mixer Plate Coil	Adjust for maximum gain and symmetry of response with markers as shown in Figure 2. In order to obtain a proper response, it may be necessary to slightly retouch A2, A3 and A4.

NOTE: BANDWIDTH ADJUSTMENT — A loop off Primary of L2 may be moved, if necessary, to increase or decrease Bandwidth.

4.5 MC TRAP ALIGNMENT

Tune in a strong TV signal and set the Contrast at maximum. Adjust the Fine Tuning until a beat pattern is visible on the screen. Adjust A9 for MINIMUM beat interference.

SOUND IF ALIGNMENT

Connect -9 volts to point A. Positive to ground.

	SIGNAL GENERATOR COUPLING	SIGNAL GENERATOR FREQUENCY	CHANNEL	CONNECT VTVM	ADJUST	REMARKS
4.	High side to point B. Low side to ground.	4.5MC (Unmod.)	Any non-interfering channel	DC probe to point C. Low side to ground.	A6, A7	Adjust for maximum.
5.	"	"	"	DC probe to point E. Low side to point D.	A8	Adjust for zero. A positive or negative indication will be obtained on either side of correct setting.

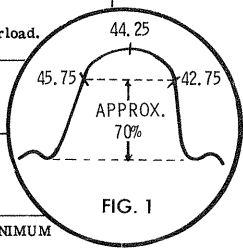


FIG. 1

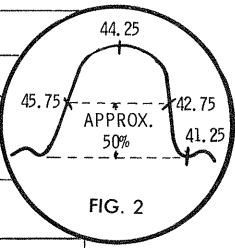
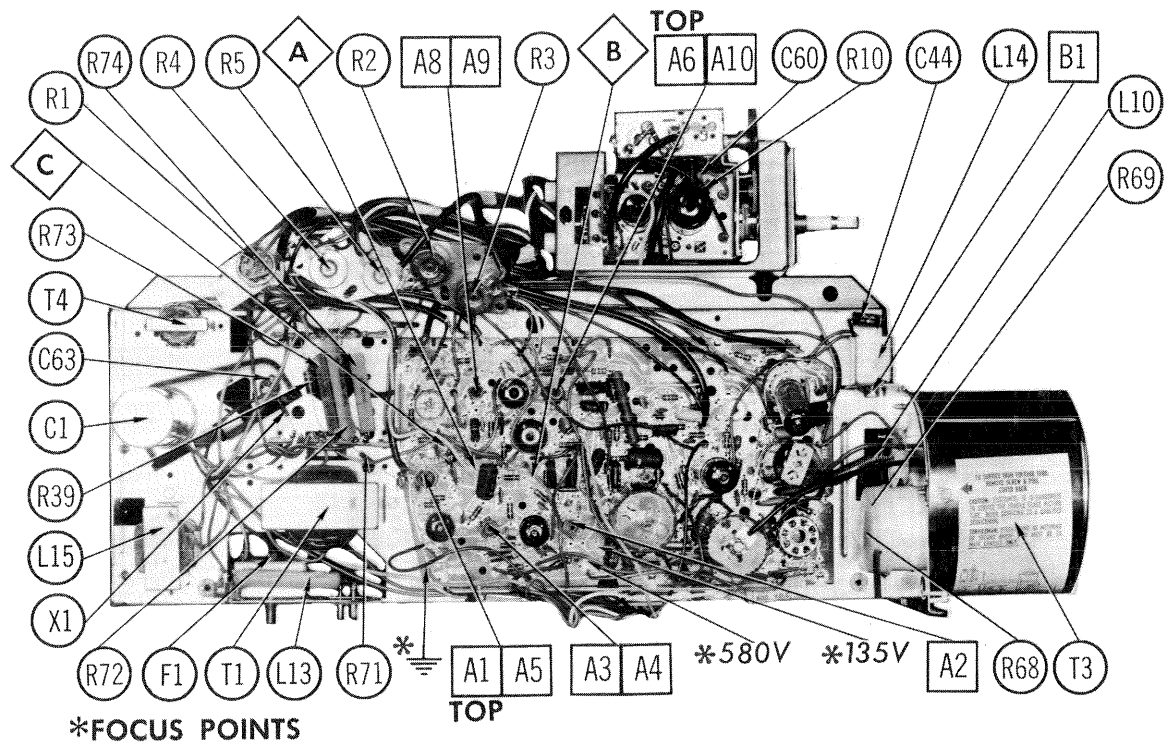


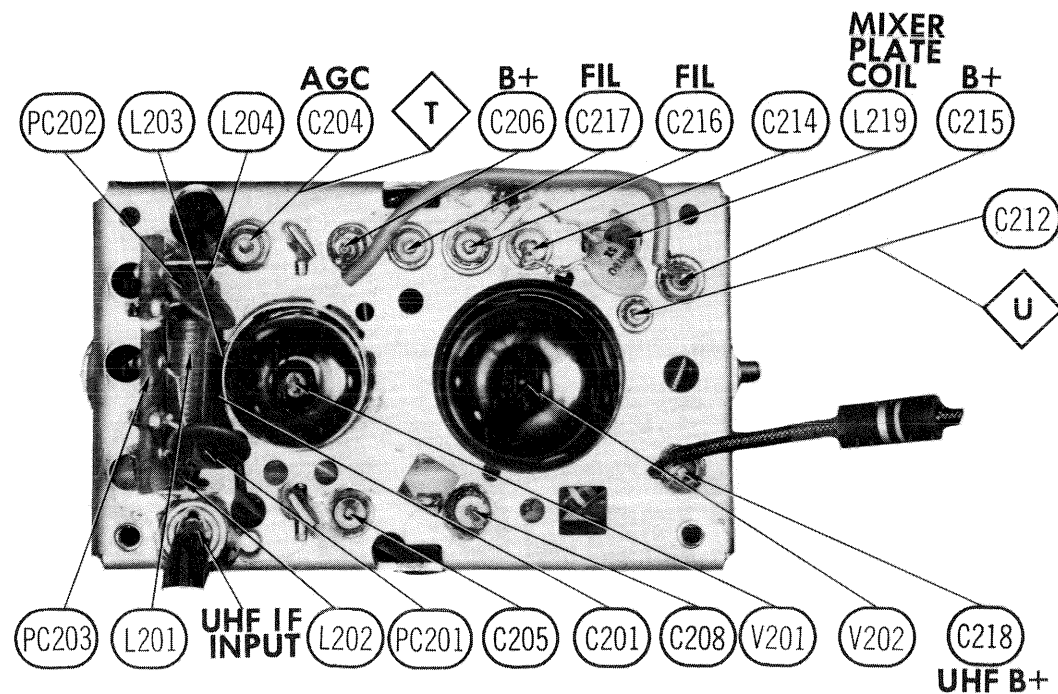
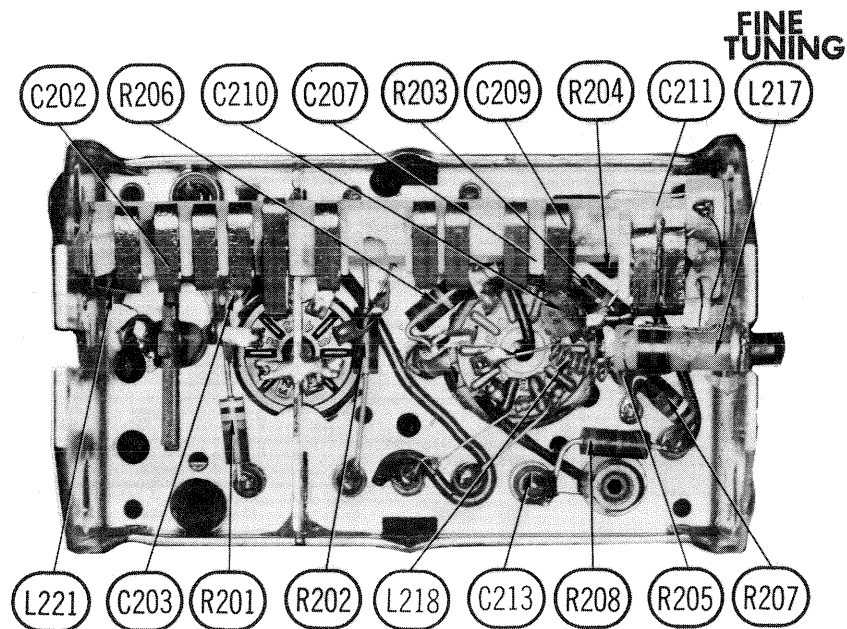
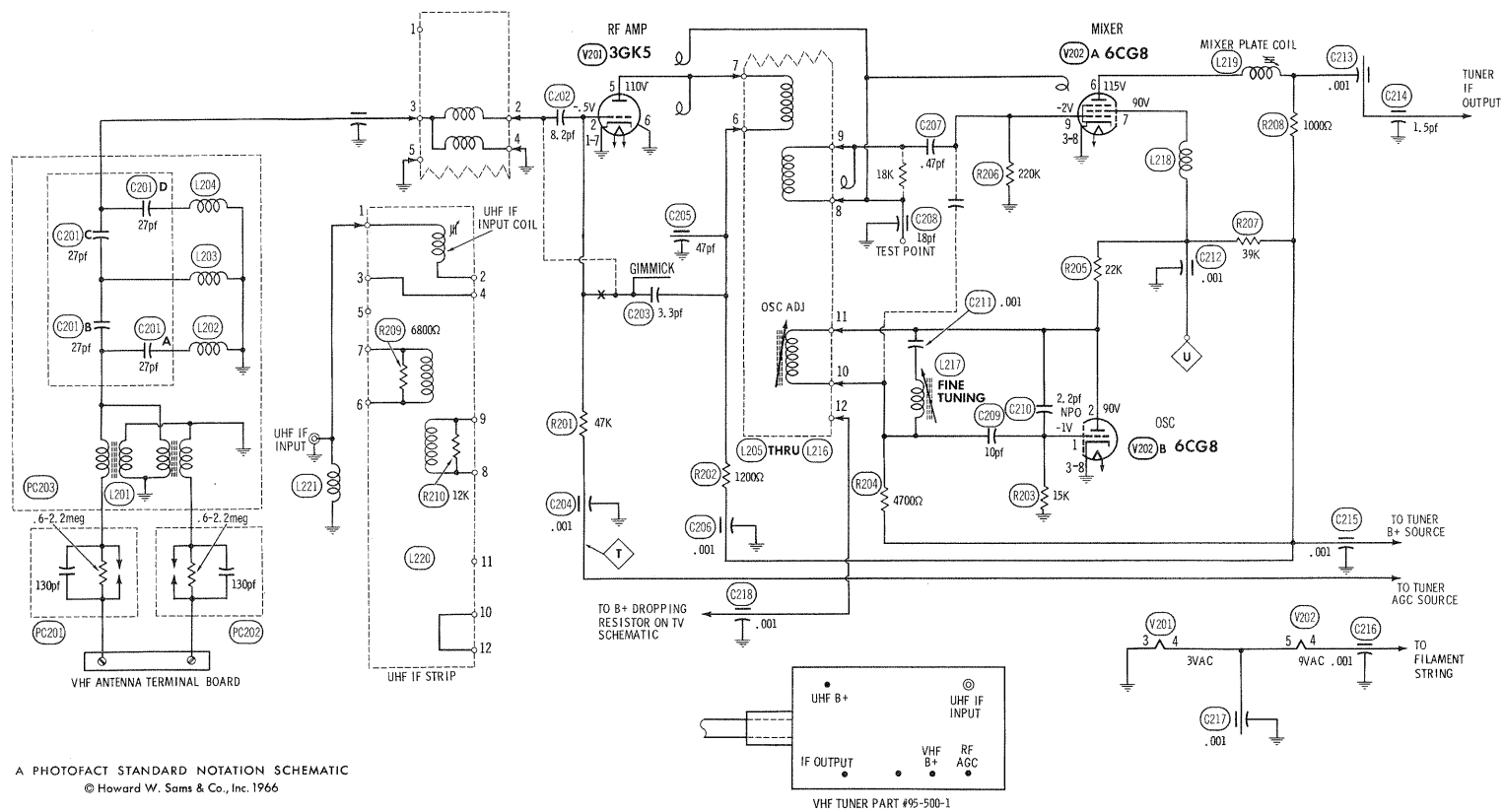
FIG. 2

SEARS SILVERTONE CHASSIS
456.70280, 528.70280, 529.70280



CHASSIS—TOP VIEW

FOLDER 4



VHF TUNER 95-500-1

VHF TUNER ALIGNMENT INSTRUCTIONS

OSCILLATOR ADJUSTMENTS

The individual oscillator slugs are accessible one at a time through a hole in the front of the tuner. Set the Fine Tuning to the center of its range and adjust oscillator for best picture and sound on each active channel.

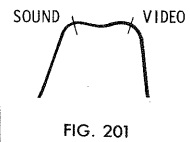
RF AND MIXER ALIGNMENT

Connect the synchronized sweep voltage from the sweep generator to the horizontal input of the oscilloscope for horizontal deflection. Use 10MC sweep unless otherwise noted. Connect a variable bias to the RF AGC line at point ∇ . Adjust bias to obtain response curve which shows no indication of overloading.

SWEEP GENERATOR COUPLING	SWEEP GENERATOR FREQUENCY	MARKER GENERATOR FREQUENCY	CHANNEL	CONNECT SCOPE	ADJUST	REMARKS
1. Across antenna terminals with 120Ω in each lead.	213MC	211.25MC 215.75MC	13	Vert. Input to Point ∇ , low side to ground.		Expand or compress appropriate coils for maximum gain and symmetry of response similar to Fig. 201 with markers as shown.
2. "	195MC	193.25MC 197.75MC	10	Across Video Det. load resistor.	Gimmick	Increase bias to -15 volts and adjust for MINIMUM amplitude of response.
3. "	See Chart	See Chart	12 thru 2	Vert. Input to Point ∇ , low side to ground.		Check all channels and make compromise adjustments by expanding or compressing appropriate coils if necessary.

CHANNEL & FREQUENCY CHART

SWEEP GENERATOR FREQUENCY	MARKER GENERATOR FREQUENCY	CHANNEL	SWEEP GENERATOR FREQUENCY	MARKER GENERATOR FREQUENCY	CHANNEL	SWEEP GENERATOR FREQUENCY	MARKER GENERATOR FREQUENCY	CHANNEL
57MC	55.25MC 59.75MC	2	85MC	83.25MC 87.75MC	6	195MC	193.25MC 197.75MC	10
63MC	61.25MC 65.75MC	3	177MC	175.25MC 179.75MC	7	201MC	199.25MC 203.75MC	11
69MC	67.25MC 71.75MC	4	183MC	181.25MC 185.75MC	8	207MC	205.25MC 209.75MC	12
79MC	77.25MC 81.75MC	5	189MC	187.25MC 191.75MC	9	213MC	211.25MC 215.75MC	13



UHF TUNER ALIGNMENT INSTRUCTIONS

UHF TUNER 95-570-4

Tune to a UHF station and adjust UHF IF Input Coil for best picture and sound. If necessary, adjust UHF Overall Oscillator Trimmer to shift entire band.

UHF TUNER 95-580-2

Tune to a UHF station and adjust UHF IF Input Coil for best picture and sound. Tune UHF Channel Selector to the highest UHF channel operating in the area (high end of the dial). Adjust UHF High Channel Oscillator Trimmer for best picture and sound. If necessary, adjust UHF Overall Oscillator Trimmer to shift entire band.

VHF TUNER PARTS LIST

TUBES

• AMPEREX •			• GENERAL ELECTRIC •			• RCA •			• RAYTHEON •			• SYLVANIA •		
ITEM No.	USE		TYPE			ITEM No.	USE		TYPE			ITEM No.	USE	
V201	RF Amp.		3GK5			V202	Mixer - Osc.		6CG8A					

CAPACITORS

ITEM No.	RATING	REMARKS	REPLACEMENT DATA						
			AEROVOX PART No.	CENTRALAB PART No.	CORNELL-DUBILIER PART No.	ELMENCOPART No.	MALLORY PART No.	SPRAGUE PART No.	
C201A	27		DI-27	DD-270		CCD-270	GP427	10TS-Q27	
B	27		DI-27	DD-270		GP427	GP427	10TS-Q27	
C	27		DI-27	DD-270		CCD-270	GP427	10TS-Q27	
D	27		DI-27	DD-270		CCD-270	GP427	10TS-Q27	
C202	8.2		NPO-DI 8.2			CCO-3R3	CNO533	10TCC-Q10	
C203	3.3		NPO-DI 3.0	DTZ-3R3		CCF-102	CT280A	10TCC-V30	
C204	.001		EF-001	MFT-1000					
C205	.47								
C206	.001		EF-001	MFT-1000		CCF-102	CT280A		
C207	.47								
C208	18								
C209	10		NPO-DI 10	DTZ-10	CZ601CG100J	CCTO-100	CNO410	10TCC-Q10	
C210	2.2	NPO	NPO-DI 2.2	DTZ-2R2	CZ601CJ2R2D	CCTO-2R2	CNO522	10TCC-V22	
C211	.001		DI-1000	DD-102	JB8801YP102K	CCD-102	GP210	10TS-D10	
C212	.001		EF-001	MFT-1000		CCF-102	CT280A		
C213	.001		EF-001	MFT-1000		CCF-102	CT280A		
C214	1.5								
C215	.001		EF-001	MFT-1000		CCF-102	CT280A		
C216	.001		EF-001	MFT-1000		CCF-102	CT280A		
C217	.001		EF-001	MFT-1000		CCF-102	CT280A		
C218	.001		EF-001	MFT-1000		CCF-102	CT280A		

COILS (RF-IF)

ITEM No.	USE	SEARS PART No.	NOTES	ITEM No.	USE	SEARS PART No.	NOTES
L201	Balun			L212	Ant., RF, Mixer, Osc.	46-10642	Chan. 9 IF Strip
L202	RF Choke			L213	"	46-10643	" 10 "
L203	RF Choke			L214	"	46-10644	" 11 "
L204	RF Choke			L215	"	46-10645	" 12 "
L205	Ant., RF, Mixer, Osc.	46-10635	Chan. 2 IF Strip	L216	"	46-10646	" 13 "
L206	"	46-10636	" 3 "	L217	Fine Tuning	46-1924	
L207	"	46-10637	" 4 "	L218	RF Choke	46-10632	
L208	"	46-10638	" 5 "	L219	Mixer Plate	46-10631	
L209	"	46-10639	" 6 "	L220	RF, Mixer, Osc.	46-10634	UHF IF Strip
L210	"	46-10640	" 7 "	L221	RF Choke	46-10633	
L211	"	46-10641	" 8 "				

COMPONENT COMBINATIONS

ITEM No.	USE	DESCRIPTION	SEARS PART NO.	REPLACEMENT DATA
PC201	Antenna Isolation	.6-2.2meg, 130pf	46-136	
PC202	Antenna Isolation	.6-2.2meg, 130pf	46-136	

UHF TUNER PARTS LIST

UHF TUNER 95-570-4

TRANSISTORS

ITEM No.	ORIG. TYPE	USE	REPLACEMENT DATA			NOTES
			DELCO PART No.	GENERAL ELECTRIC PART No.	RCA PART No.	
Q301	86-138-2	UHF Oscillator		GE-11		NPN

POWER RECTIFIERS & SIGNAL DIODES

ITEM No.	MEASURED CURRENT	ORIGINAL Part or Type No.	RECTIFIERS & DIODES		RECTIFIERS		
			GENERAL ELECTRIC PART No.	INTERNATIONAL RECTIFIER PART No.	MALLORY PART No.	RCA PART No.	SARKES TARZIAN PART No.
X301		46-8613					

CAPACITORS

ITEM No.	RATING	REMARKS	REPLACEMENT DATA					
			AEROVOX PART No.	CENTRALAB PART No.	CORNELL-DUBILIER PART No.	ELMENCOPART No.	MALLORY PART No.	SPRAGUE PART No.
C301	100		EF-001	MFT-1000	CZ601CG100J	CCF-102	CT280A	10TCC-Q10
C302	.001		NPO-DI 10	DTZ-10		CCTO-100	CNO410	
C303	10							
C304	30							

COILS (RF-IF)

ITEM No.	USE	SEARS PART No.	NOTES	ITEM No.	USE	SEARS PART No.	NOTES
L301	Antenna			L303	RF Choke	46-10682	
L302	RF Choke	46-10714	Wound on 220Ω resistor.				

PARTS LIST AND DESCRIPTION

(When ordering parts, state Model, Part Number, and Description.)

Replacement parts shown may be superseded by the availability of newly introduced replacements. Have your local distributor check Sams COUNTER FACTS for the most up-to-date replacement.

WIRING DATA

High Voltage Lead	Use BELDEN No. 8869 (17KV) or 8868 (25KV)
Shielded Hook-up Wire	Use BELDEN No. 8885 (Single Conductor)
	8738 (Two Conductor)
General-use Unshielded Hook-up Wire	Use BELDEN No. 8530 (Solid) Available in 12 Colors
	8524 (Stranded) Available in 12 Colors
Power Cord (Interlock Type)	Use BELDEN No. 8874 (Rubber) or 8895 (Plastic)
3000Ω Tuner Input Lead	Use BELDEN No. 8225
3000Ω Antenna Lead-in	Use BELDEN No. 8230 or 8275
Antenna Rotor Cable	Use BELDEN No. 8484 (Flat) or 8484 (Round) - 4 Conductor
	8485 (Round) - 5 Conductor
	8488 (Round) - 8 Conductor

TUBES

• AMPEREX •			• GENERAL ELECTRIC •			• RCA •			• RAYTHEON •			• SYLVANIA •		
ITEM No.	USE		TYPE			ITEM No.	USE		TYPE			ITEM No.	USE	
Q301	UHF Osc. (Transistor)		86-138-2			V5	Ratio Det. - AF Amp.		12AV6			V6	Audio Output	
V201	RF Amp.		3GK5			V6	Audio Output		50C5			V7	Vert. Mult. - Vert. Output	
V202	Mixer - Osc.		6CG8A			V7	Vert. Mult. - Vert. Output		21LR8			V8	Horiz. Mult.	
V1	1st Video IF		4CB6			V8	Horiz. Mult.		8FQ7			V9	Horiz. Output	
V2	2nd Video IF		4CB6			V9	Horiz. Output		22FJ6			V10	Damper	
V3	Video Output - Sync Sep.		8JV8			V10	Damper		17BS3			V11	HV Rectifier	
V4	Sound IF		12BA6			V11	HV Rectifier		1K3 (1G3) *					

* Alternate

PICTURE TUBE

ITEM No.	REPLACEMENT DATA				NOTES
	SEARS PART No.	GENERAL ELECTRIC PART No.	RCA PART No.	SYLVANIA PART No.	
V12	23HFP4 23HFP4A		23HFP4A ①	23HFP4 ②	① Aluminized ② Silver Screen "85"

POWER RECTIFIERS & SIGNAL DIODES

ITEM No.	MEASURED CURRENT	ORIGINAL Part or Type No.	RECTIFIERS & DIODES		RECTIFIERS		
			GENERAL ELECTRIC PART No.	INTERNATIONAL RECTIFIER PART No.	MALLORY PART No.	RCA PART No.	SARKES TARZIAN PART No.
X1	.36A	86-57-3	GE-505 or GE-504A	8D4 or 5A4-D	1N2070 or 1N540	SK-3016 or SK-3017	40C or F-4
X2		86-10-1	1N60	1N60			
X3		86-10-1	1N60	1N60			
X4		86-9-1	6GC1	DD04			

ELECTROLYTIC CAPACITORS

ITEM No.	RATING		REPLACEMENT DATA					
	CAP.	VOLT.	SEARS PART No.	AEROVOX PART No.	CORNELL-DUBILIER PART No.	GENERAL ELECTRIC PART No.	MALLORY PART No.	SPRAGUE PART No.
C1A	200	175	18-186-5	AFH54-38-98	DD0015	XC4-77	WP412.1A	TVLS-4449.2 *
B	300	175			BBR20-150	QT1-8.1	TC45	
C	20	150						
D	20	150						
C2	3	50	18-170-5	BCD50003	NLW3-50	MT1-3	TT50X3	VL-1302

* Not normally in distributor's stock. Available thru distributor on order to manufacturer.

SEARS SILVERTONE CHASSIS
456.70280, 528.70280, 529.70280

FOLDER 4

PARTS LIST AND DESCRIPTION (CONTINUED)

(When ordering parts, state Model, Part Number, and Description.)

Replacement parts shown may be superseded by the availability of newly introduced replacements.
Have your local distributor check Sams COUNTER FACTS® for the most up-to-date replacement.

CAPACITORS

ITEM No.	RATING		REMARKS	REPLACEMENT DATA					
				AEROVOX PART No.	CENTRALAB PART No.	CORNELL-DUBILIER PART No.	ELMENDO PART No.	MALLORY PART No.	SPRAGUE PART No.
C3	27	NPO 10%		DBE4P22	TCZ-27	DMF4P22	CCTO-270	CNO427	10TCC-Q27
C4	.22	100V		DI-470	DD-471	JBZ601YP471K	4DP-5-224	PVC4022	4PS-P22
C5	470	10%		DI-560	DD-561	JBZ601YP561K	CCD-471	GP347	10TS-T47
C6	560	10%		DI-470	DD-471	JBZ601YP471K	CCD-561	GP356	10TS-T56
C7	470	10%		NPO-DI 6.8	DTZ-6R8	CZ601CH6R8D	CCTO-6R8	CNO568	10TCC-V68
C8	6.8			NPO-DI 4.7	DTZ-4R7		CCTO-4R7	CNO547	10TCC-V47
C9	4.7			DBE2P1	DD-102	JBS601YP102K	2DP-3-104	PVC201	2PS-P10
C10	.1	100V		DI-1000	DD-102	JBS601YP102K	CCD-102	GP210	10TS-D10
C11	.001						*	*	10TCC-P47
C12	47	N150 10%		NPO-DI 1.5	DTZ-1R5		CNO615		10TCC-V15
C13	1.5						*		10TCC-P33
C14	33	N150 10%		DI-5000	DD-502	JBT601YP502K	CCD-502	GP250	10TS-D50
C15	.005			DBE2S47	DD-502	DMF2S47	4DP-3-473	PVC2147	2PS-S47
C16	.047	200V		DI-3300	DD-332	JBV601YP332K	CCD-332	GP233	10TS-D33
C17	.0033	10%		DI-1000	DD-102	JBS601YP102K	CCD-102	GP210	10TS-D10
C18	.001	10%					*		
C19	5	N1500 5%	#20-23-0 (4.7) ↑	DI-1000	DD-102	JBS601YP102K	CCD-102	GP210	10TS-D10
C20	.001	10%		NPO-DI 150	DTZ-150	JBT601YP502K	CCTO-151	CNO315	10TCC-T15
C21	150	NPO 5%		DI-5000	DD-502	JBT601YP502K	CCD-502	GP250	10TS-D50
C22	.005			DI-1500	DD-152		CCD-152	GP215	10TS-D15
C23	.0015	10%		DI-2000	DD-202	JBX601YP202K	CCD-202	GP220	10TS-D20
C24	.002			DI-10000	DD-103	BYX601ZU103M	CCD-103	GP110	10TS-S10
C25	.01	1KV		TCZ-27	CPR-10000J	DMF6S1	CCTO-270	CNO427	10TCC-Q27
C26	27	NPO 10%		DBE6S1	DD-103	BYX601ZU103M	6DP-1-103	PVC611	6PS-S10
C27	.01	400V 10%		DI-10000	DD-103	JBS601YP102K	CCD-103	GP110	10TS-S10
C28	.01			DI-1000	DD-102	JBS601YP102K	CCD-102	GP210	10TS-D10
C29	.001	10%		DBE6D3	CPR-3000J		6DP-1-302	PVC623	6PS-D30
C30	.003	400V 10%		DI-1000	DD-102	JBS601YP102K	CCD-102	GP210	10TS-D10
C31	.001	10%		DBE4S22		DMF4S22	4DP-2-223	PVC6122	4PS-S22
C32	.022	400V 10%		DBE4S1	CPR-10000J	DMF6S1	4DP-1-103	PVC211	2TM-S10
C33	.01	200V 10%		DBE6P1		DMF6P1	6DP-4-104	PVC601	6PS-P10
C34	.1	600V 10%		DI-10000	DD-103	BYX601ZU103M	CCD-103	GP110	10TS-S10
C35	.01	1KV		DBE6S25		DPM6S25	6DP-3-253	PVC6125	6PS-S25
C36	.025	600V		DI-6800	DD-682	BYX601ZU682P	CCD-682	GP268	10TS-D68
C37	.0068	1KV		DI-220	DD-221	JBZ601YP221K	CCD-221	GP322	10TS-T22
C38	220	10%		DBE2P1		DMF2P1	2DP-3-104	PVC201	2PS-P10
C39	.1	200V		N750-DI 47	DTN-47	CS601UJ470K	CCTN-470	CNT447	10TCU-Q47
C40	47	N750		DI-1000	DD-102	JBS601YP102K	CCD-102	GP210	10TS-D10
C41	.001			DBE2P1	DD-222	DMF2P1	2DP-3-104	PVC201	2PS-P10
C42	.1	100V		DI-2200	CPR-3900J	JBX601YP222K	CCD-222	GP222	10TS-D22
C43	.0022			DBE6D39		DFPM6D39	6DP-1-392	PVC6239	6PS-D39
C44	.0039	100V				CD19F621J500	DM-19-821	SX382	MS-382
C45	820	5%				CD15F201J500	DM-15-201	SX320	MS-320
C46	200	10%		DI-5000	CPR-200J	JBT601YP502K	CCD-502	GP250	10TS-D50
C47	.005			DBE2P1	DD-502	DMF2P1	2DP-3-104	PVC201	2PS-P10
C48	.1	200V		DI-1000	DD-102	JBS601YP102K	CCD-102	GP210	10TS-D10
C49	.001						*	*	
C50	240	3KV 10%	#12-241516-8				*	*	
C51	170	3KV 10%	#12-17166-0				*	*	
C52	.1	600V		DBE6P1	DD-102	DMF6P1	6DP-4-104	PVC601	6PS-P10
C53	.001			DI-1000	DD-102	JBS601YP102K	CCD-102	GP210	10TS-D10
C54	.001			DI-1000	DD-102	JBS601YP102K	CCD-102	GP210	10TS-D10
C55	.001			DI-1000	DD-102	JBS601YP102K	CCD-102	GP210	10TS-D10
C56	.001			DI-1000	DD-102	JBS601YP102K	CCD-102	GP210	10TS-D10
C57	.001			DI-1000	DD-102	JBS601YP102K	CCD-102	GP210	10TS-D10
C58	.001			DI-1000	DD-102	JBS601YP102K	CCD-102	GP210	10TS-D10
C59	.001			DI-1000	DD-102	JBS601YP102K	CCD-102	GP210	10TS-D10
C60	68	N750 5%	▲	N750-DI 68	TCN-68	CS601UJ680K	CCTN-680	CNT468	10TCU-Q68
C61	.02			BPD-02	DD-203	BYT601ZU203Z	CCD-203	GP120	10TS-S20
C62	.005			DI-5000	DD-502	JBT601YP502K	CCD-502	GP250	10TS-D50
C63	.001			EF-001	MFT-1000		CCF-102	CT280A	

* Not normally in distributor's stock. Available thru distributor on order to manufacturer.

▲ Nominal value may vary; replace with exact value removed.

Sears Silvertone Part Number

CONTROLS

All wattages 1/2 watt, or less, unless otherwise listed.

ITEM No.	USE	RESISTANCE	REPLACEMENT DATA				
			SEARS PART No.	CENTRALAB PART No.	CLAROSTAT PART No.	CTS-IRC PART No.	MALLORY PART No.
R1	Volume/Switch	1meg	24-860 (24-860A)				PTA751L, SP2000 ① or (RU131L, SL37, SN2000) or (UA131L, SN2000)
R2	Contrast	800Ω	24-749 (24-749A)	F1-1000, SNK108	A47-1000-S, RN-3, TT-2	B11-108, TM4 or (BU11, CF9, SS6) *	
R3	Horiz. Hold	8000Ω	24-877 (24-877A)	F1-10K, SNK108	A47-10K-S, RN-3, TT-2	B11-116, TM4 or (BU11, CF9, SS6) *	
	Horiz. Hold	10K	24-847 ② (24-847A)	F1-10K, SNK108	A47-10K-S, RN-3, TT-2	B11-116, TM4 or (BU11, CF9, SS6) *	
R4	Brightness	3.4meg	24-750 (24-750A)	F1-3meg, SNK108	A47-3meg-S, RN-3, TT-2	B11-140, TM4 or (BU11, CF21, SS6) *	PTA355L, SP2000 ①, or (RU381L, SL37, SN2000) or (UA361L, SN2000)
R5	Vert. Hold	2meg	24-794 (24-794A)	F1-2meg, SNK108	A47-2meg-S, RN-3, TT-2	B11-139, TM4 or (BU11, CF19, SS6) *	PTA261L, SP2000 ① or (RU261L, SL37, SN2000) or (UA261L, SN2000)
R6	Vert. Linearity	500K, 100K Stop	24-816 (24-816G)				
R7	Height	3meg, 650K Stop	24-817 (24-817H)				
R8	Horiz. Frequency	60K	24-828				U201R503B MTC54L4

① Use portion of the original shaft to obtain desired length.

② Alternate Part, may be used in some versions.

* "SNAPTROL"

RESISTORS (Power and Special)

ITEM No.	RATING	REPLACEMENT DATA			ITEM No.	RATING	REPLACEMENT DATA		
		IRC PART No.	WORKMAN PART No.	SEARS PART No.			IRC PART No.	WORKMAN PART No.	SEARS PART No.
R23	4700Ω 5W	PW5-4500	5G-4.7K	63-47251	R73	300Ω 10W	PW10-300	10W-SQ-300	61-299-0
R72	4.5Ω 10W	PW10-5	10W-SQ-5	61-191-0	R74	40Ω 10W	PW10-40	10W-SQ-40	61-295-0

COILS (RF-IF)

ITEM No.	USE	REPLACEMENT DATA				
		SEARS PART No.	MEISSNER PART No.	MERIT PART No.	MILLER PART No.	WORKMAN PART No.
L1	1st Sound-IF/ 41.25MC Trap	10-55-3				
L2	2nd Sound-IF	10-56-3				
L3	3rd Sound-IF	10-59-3				
L4	RF Choke (12uh)	10-85-1	19-2016	BC-566	74F125AP 6110	TA343 T338
L5	Peaking (60uh)	10-148-1	19-3060	BC-666		
L6	Sound Takeoff/ 4.5MC Trap	10-209-1				
L7	Peaking (270uh)	10-150-1 ①	19-3275 *	BC-674 *	7131 6130 *	TA339 *
L8	Peaking (620uh)	10-236-1	19-2030	TV-205	6146	T326
L9	Ratio Detector	10-260-1				
L10	RF Choke (26 turns)	10-242-1				
L11	RF Choke (4.7uh)	10-124-1	19-1008	SW-631	74F476AP	T819
L12	Filament Choke (16 turns)	10-156-1				
L13A	AC Line Choke (250uh)	10-289-1				
B						

① Wound on 15K Resistor.

* Shunt with 15K Resistor.

COILS (SWEEP CIRCUITS)

ITEM No.	USE	REPLACEMENT DATA						
		SEARS PART No.	MERIT PART No.	MILLER PART No.	STANCOR PART No.	THORDARSON MEISSNER PART No.	TRIAD PART No.	WORKMAN PART No.
L14	Horiz. Stabilizer	10-75-5		H-144				

FILTER CHOKE

ITEM No.	RATINGS		REPLACEMENT DATA						NOTES
	CURRENT (Measured)	DC RES.	INDUCTANCE (0 CURRENT 1000~)	SEARS PART No.	MERIT PART No.	STANCOR PART No.	THORDARSON PART No.	TRIAD PART No.	
L15	.36ADC	17.3Ω	.4 H	80-47-6(B)	C-4133 ①	C-2708 ①	26C81 ①	C-40X	① Drill new mounting hole.

* TRANSFORMERS (SWEEP CIRCUITS)

ITEM No.	USE	REPLACEMENT DATA					NOTES
		SEARS PART No.	MERIT PART No.	STANCOR PART No.	THORDARSON PART No.	TRIAD PART No.	
T1	Vert. Output	80-30-2(B)		VO-122			① Use original vertical damping network and remove 82pf capacitor. ② Remove Orange lead. ③ Remove 68pf cap., yellow lead and green/yellow lead. * Not used in Model 7128.
T2	Yoke (Horiz. 32.5mh) 1109 (Vert. 70mh)	80-49-4(H)	MDF-143 ①②	DY-57AT ③	Y-106 ①	YT-103-1 ①②	
	Yoke Clamp	22-145-3					
	Width Sleeve	83-1706 ‡					
T3	Horiz. Output Ass'y	84-17576					
	Horiz. Output Ass'y	E84-17550					

COMPONENT CONNECTION DATA NEXT COLUMN

* COMPONENT CONNECTION DATA

ORIGINAL REPLACEMENT ↓	HV TRANSFORMER Original Connections					VERTICAL OUTPUT Original Connections			YOKE Original Connections					YOKE PLUG TO YOKE TERMINAL				
MERIT									1	2	3	4	5	6	7	8		
STANCOR						Blue	Yellow	Black	7	3	2	4	5	6	1	8	4	6
THORDARSON									1	2	3	4	5	6	7	8	4	6
TRIAD									1	2	3	4	5	6	7	8	4	6

‡ Install original .1 mfd @ 200V capacitor between yoke plug pins #1 and #2.

TRANSFORMER (AUDIO OUTPUT)

ITEM No.	IMPEDANCE		REPLACEMENT DATA					NOTES
			SEARS PART No.	MERIT PART No.	STANCOR PART No.	THORDARSON PART No.	TRIAD PART No.	
T4	2550Ω	3-4Ω	80-226-1(D)	A-3025	A-3332	24S53	S-12X	

SPEAKER

ITEM No.	TYPE	REPLACEMENT DATA		NOTES
		SEARS PART No.	QUAM PART No.	
SP1	3" x 5" PM 6-8Ω	33-492-4	35A05Z8	Used in Models 7140, 7141, 7142, 7143.
SP2	3" x 5" PM 6-8Ω	33-610-4 (33-610-48)	35A05Z8	Used in Models 7140, 7141, 7142, 7143.
	3" x 5" PM 3-4Ω	33-379-4	35A05	Used in Models 7128, 7131, 7132, 7133.

FUSE DEVICES

ITEM No.	TYPE	RATING	REPLACEMENT DATA
----------	------	--------	------------------