

COILS (RF-IF)

ITEM No.	USE	REPLACEMENT DATA			NOTES
		SILVERTONE PART No.	Miller PART No.	Stancor PART No.	
L1	Loopstick	82-174-0	BC-419	2001	
L2	RF	10-26-0			
L3	Osc.	10-56-4	13-PC1	RTC-8641	
L4	Input IF	10-84-2	13-PC2	RTC-8642	
L5	Output IF	10-74-2	BC-357		

TRANSFORMER (AUDIO OUTPUT)

ITEM No.	IMPEDANCE	REPLACEMENT DATA			NOTES
		SILVERTONE PART No.	Stancor PART No.	Thordarson PART No.	
T1	PRL SEC. 2700Ω Tap 3-4Ω @ 5%	B80-107-1A ①	A-3031	24887	① Alternate Part #80-107-1.

SPEAKER

ITEM No.	TYPE	REPLACEMENT DATA			NOTES
		SILVERTONE PART No.	QUAM PART No.		
SPL	SIZE 5" FIELD V. C. IMP. 3-4Ω PM	33-421-4 *	5A07		* Includes TL.

MISCELLANEOUS

ITEM No.	PART NAME	SILVERTONE PART No.	NOTES
M1	Tuning Cap.	19-36-3	3 Gang Includes Mounting Brackets Assembly Complete, Less Tubes Board Only, Less All Components
M2	Clock Ass'y.	84-11512	
	Printed Board	84-11508-0	
	Printed Board	25-32-1	

CABINETS & CABINET PARTS

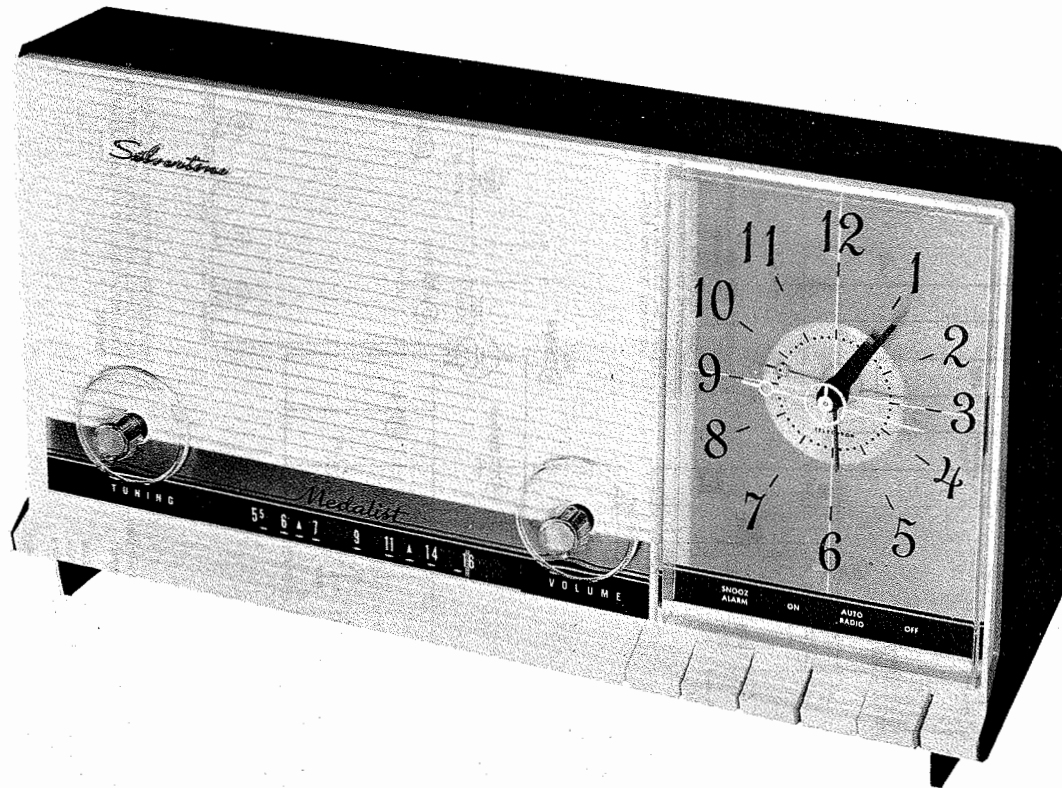
(When Ordering Cabinets & Cabinet Parts, Specify Model, Chassis & Color)

NAME	PART NO.	DESCRIPTION
Knob	52-1380-0	
Dial Scale	67-681-0	
Dial Pointer	52-236-1	
Cabinet Front	40-74-1	
Cabinet Rear	42-125-1	
Cabinet Rear	42-126-1	
Cabinet Rear	42-127-1	

WIRING DATA

General-use Unshielded Hook-up Wire ..... Use BELDEN No. 8530 (Solid) Available in Ten Colors 8524 (Stranded) Available in Ten Colors Power Cord (Interlock Type) ..... Use BELDEN No. 8874

SILVERTONE MODELS 1039, 1040, 1041 (Ch. 528.54040)



TRADE NAME Silvertone Models 1039, 1040, 1041 (Ch. 528.54040)  
SUPPLIER Sears, Roebuck & Co., 925 S. Homan Ave., Chicago, Illinois  
TYPE SET AC Operated 6 Tube AM Receiver With Electric Clock  
POWER SUPPLY 105 - 125 Volts AC, 60 Cycles  
TUNING RANGE—BROADCAST 540 - 1600KC  
RATING 26 Watts. .25 Amp. @117 Volts AC (Less Clock)

ALIGNMENT INSTRUCTIONS

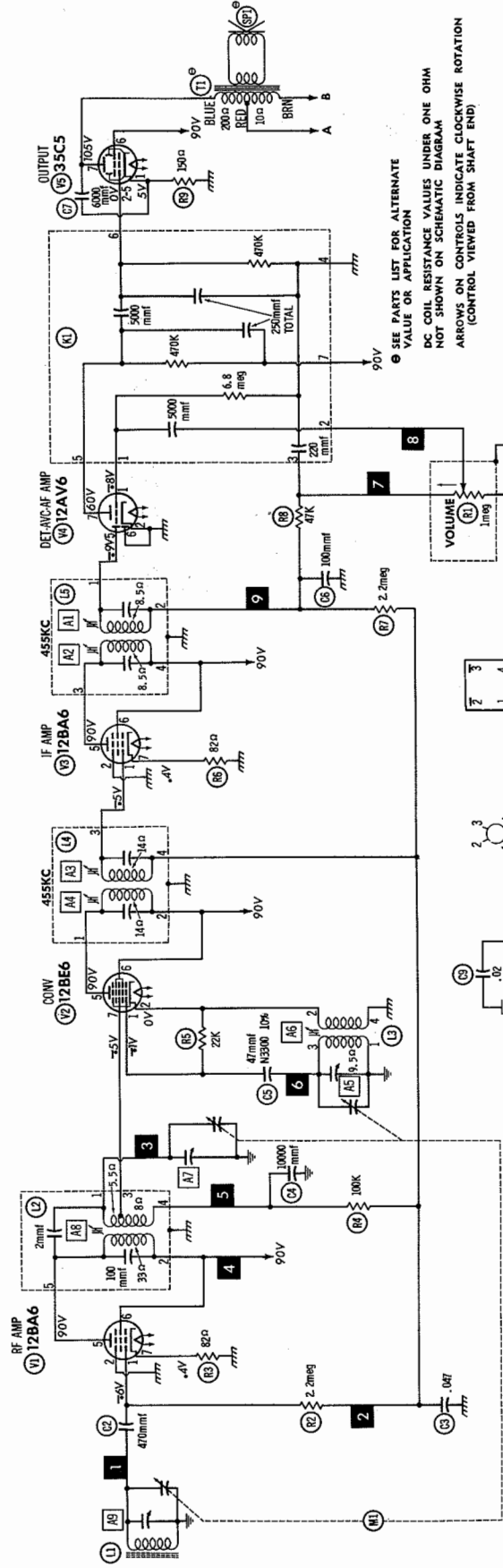
ALIGNMENT INSTRUCTIONS—READ CAREFULLY BEFORE ATTEMPTING ALIGNMENT

Volume control should be at maximum position. Output of signal generator should be no higher than necessary to obtain an output reading.					
Suggested Alignment Tools: A1 Thru A4.....GENERAL CEMENT #5009, 8195, 8274, 8275, 8728, 8729, 8987, 8988, 8989 WALSCO #2515, 2531, 2532 A5, A7, A9.....GENERAL CEMENT #5004, 5008, 5009 WALSCO #2520 A6, A8.....GENERAL CEMENT #8282, 8606, 8606-L, 9295, 9440 WALSCO #2526, 2543, 2544, 2545					
SIGNAL GENERATOR COUPLING	SIGNAL GENERATOR FREQUENCY	RADIO DIAL SETTING	OUTPUT METER	ADJUST	REMARKS
1. High side thru .1mfd to pin 7 (grid) of Converter. Low side to B-.	455KC (400 Mod.)	Tuning gang fully open.	Across voice coil.	A1, A2, A3, A4	Adjust for maximum output.
2. "	1630KC	"	"	A5	"
3. "	532KC	Tuning gang fully closed.	"	A6	Adjust for maximum output. Repeat Steps 2 and 3.
4. Loop	1400KC	1400KC	"	A7	Fashion loop of several turns of wire and radiate signal into loop of receiver. Adjust for maximum output.
5. "	600KC	600KC	"	A8	Adjust for maximum output. Repeat Steps 4 and 5.
6. "	1400KC	1400KC	"	A9	Adjust for maximum output.

HOWARD W. SAMS & CO., INC. Indianapolis 6, Indiana

The listing of any available replacement part herein does not constitute in any case a recommendation, warranty or guaranty by Howard W. Sams & Co., Inc., as to the quality and suitability of such replacement part. The numbers of these parts have been compiled from information furnished to Howard W. Sams & Co., Inc., by the manufacturers of KG420

the particular type of replacement part listed. Reproduction or use, without express permission, of editorial or pictorial content, in any manner, is prohibited. No patent liability is assumed with respect to the use of the information contained herein. © 1961 Howard W. Sams & Co., Inc., Indianapolis 6, Indiana. Printed in U.S. of America



RESISTANCE READINGS

ITEM	TUBE	Pin 1	Pin 2	Pin 3	Pin 4	Pin 5	Pin 6	Pin 7
V1	12BA6	5.4meg	0	45	30	1000	1000	82
V2	12BE6	22K	.8	30	15	1000	1000	3.3meg
V3	12BA6	3.2meg	0	45	60	1000	1000	82
V4	12AV6	6.8meg	0	15	0	1meg	0	1.47K
V5	35C5	150	40K	60	100	NC	1000	120
V6	35W4	NC	100	130	120	120	120	1

† THIS READING WILL VARY DEPENDING UPON THE CONDITION OF THE ELECTROLYTIC IN THE CIRCUIT.  
NC NO CONNECTION  
‡ MEASURED FROM PIN 7 OF V6.

A. PHOTOFACT STANDARD NOTATION SCHEMATIC  
with CIRCUITTRACE<sup>®</sup>  
© Howard W. Sams & Co., Inc. 1961

SILVERTONE MODELS  
1039, 1040, 1041 (Ch. 528.54040)

1. DC voltage measurements taken with vacuum tube voltmeter; AC voltage measured with 1000 ohm per volt voltmeter.
2. Socket connections are shown as follows: 1. Pin 1 to chassis ground.
3. Line voltage maintained at 117 volts for voltage readings.
4. Nominal tolerance on component values makes possible a variation of  $\pm 15\%$  in voltage and resistance readings.
5. Volume control at maximum, no signal applied for voltage measurements.

NUMBERS ASSIGNED TO COILS, SWITCHES, PLUGS, SOCKETS, AND TRANSFORMERS ARE TO FACILITATE CIRCUIT TRACING OR COMPONENT REPLACEMENT AND MAY NOT NECESSARILY BE FOUND ON THE UNIT.

## PARTS LIST AND DESCRIPTIONS TUBES

ITEM No.	USE	TYPE	GENERAL ELECTRIC		RAYTHEON		SYLVANIA		TYPE
			ITEM No.	USE	ITEM No.	USE	ITEM No.	USE	
V1	RF Amplifier	12BA6	V4	Det.-AFC-AF Amp.	V6	Output Rectifier	V5	35C5	12AV6
V2	IF Amplifier	12BE6	V6	Output Rectifier	V6	Output Rectifier	V6	35W4	35W4

## ELECTROLYTIC CAPACITORS

ITEM No.	RATING	CAP.	VOL.	SILVERTONE PART No.	AEROVOX PART No.	CORNELL-DUBILIER PART No.	MALLORY PART No.	PYRAMID PART No.	SILVERTONE PART No.	NOTES
C1A	70	150	150	FWH2-17-50	XB0181	3	FFP214	3	TMD-2125	PC-L-2441

† Use printed circuit adapters #55277 & 55278.  
‡ Use printed circuit adapters TMA1 & TMA5.

## FIXED CAPACITORS

Capacity values given in the rating column are in mfd. for Paper Capacitors, and in mmfd. for Mica and Ceramic Capacitors.

ITEM No.	RATING	REMARKS	AEROVOX PART No.	CENTRALAB PART No.	CORNELL-DUBILIER PART No.	ELENCO PART No.	MALLORY PART No.	SPRAGUE PART No.
C2	470		BPD-00047	DD-471	BYA10747	CCD-471	B-347	10TS-T47
C3	.047	200V	FP215IN-047	DD-503	BC2847J	4CD-3-503	ACE-6147	28E-S47
C4	10000		BPD-01	DD-103	BYA1081	CCD-103	B-110	5HK-S10
C5	47	N3300 10%						
C6	100		BPD-0001	DD-101	LI071	CCD-101	GP-310	10TS-T10
C7	6000		DAC-22	DDJ6-602	HVE1606	8DP-1-602	UAC-260	BL-D60
C8	20000		BPD-02	DD-203	BYB652	CCD-203	B-120	5HK-S20
C9	.02	400V	P468N-02	DD-203	CUB452	4DP-2-203	GEM-412	4TM-S20

# Silvertone part numbers.

\* Not normally in distributor's stock. Available thru distributor on order to manufacturer.

## CONTROLS

ITEM No.	RATING	RESISTANCE	WATTS	SILVERTONE PART No.	CENTRALAB PART No.	CLAROSTAT PART No.	CTS-RC PART No.	MALLORY PART No.	INSTALLATION NOTES
R1A	1meg			B-70	Not Req.	A47-1meg-Z	Q13-137	U53	Volume
B	Shift			Not Req.	FS-3	Not Req.	Not Req.	Not Req.	

## RESISTORS

All wattages 1/2 watt, or less, unless otherwise listed.

ITEM No.	RATING	REMARKS	WORKMAN PART No.	IRC PART No.	RATING	ITEM No.	REMARKS	WORKMAN PART No.	IRC PART No.	REMARKS
R2	2.2meg					R7	2.2meg			
R3	82K					R8	47K			
R4	100K					R9	150K			
R5	22K					R10	1000K 1W			
R6	82K					R11	47K			

## COMPONENT COMBINATIONS

ITEM No.	USE	DESCRIPTION	SILVERTONE PART No.	REPLACEMENT DATA
K1	Audio Coupling	220mmf, 250mmf, 5000mmf, 5000mmf, 470K, 470K, 6.8meg	13-32-3	Aerovox PA-512-3 Centralab PC-158 Sprague DT-5

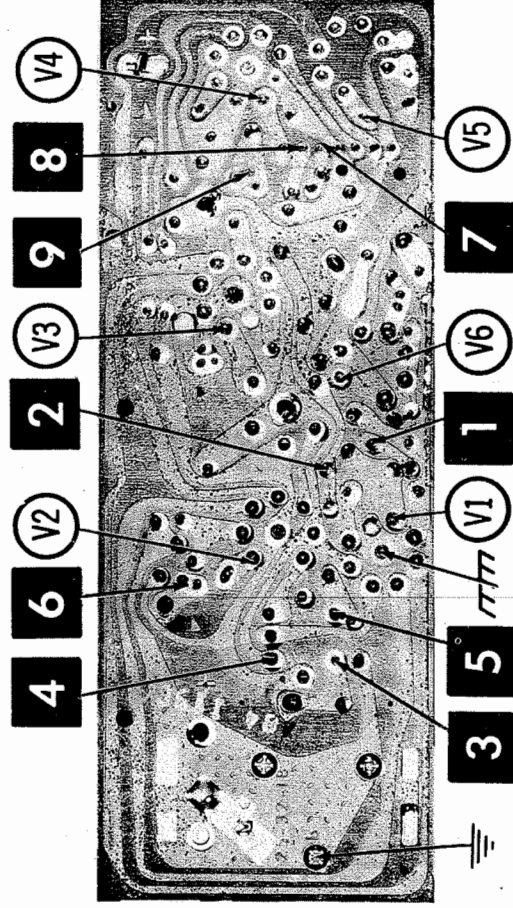
FOLDER 9

SILVERTONE MODELS  
1039, 1040, 1041 (Ch. 528.54040)

## PRINTED BOARD

A Howard W. Sams CIRCUITTRACE<sup>®</sup> Photo

ARROWS INDICATING TUBE LOCATIONS ARE POINTING TO PIN 1 UNLESS OTHERWISE INDICATED



## OPERATION

"Snooze-Alarm"

To repeat alarm, press "Snooze-Alarm" button once; alarm will shut off for 10 minutes. Press button twice to shut off alarm for 30 minutes, 3 times for 45 minutes and 4 times for 60 minutes. Pressing the alarm button 5 times shuts off the receiver.

Automatic Shut-off

For 10 minute operation of receiver, press alarm button once, for 30 minute operation, press twice; for 45 minutes press 3 times, and for 60 minutes press 4 times. Pressing the button 5 times shuts off the receiver.

Note

The receiver will continue to operate once the alarm button is pressed even when the off button is pressed. To shut off the receiver in this situation, press the alarm button several times.

## DIAL CORD STRINGING

TUNING GANG CLOSED

