

SILVERTONE MODELS
1016, 1017, 1018 (Ch. 132.60401)



MODEL 1016

TRADE NAME	Silvertone Models 1016, 1017, 1018 (Ch. 132.60401)		
SUPPLIER	Sears, Roebuck & Co., 925 S. Homan Ave., Chicago, Illinois		
TYPE SET	Battery Operated Transistorized AM Receiver		
POWER SUPPLY	9 Volts DC	RATING	9MA @ 9 Volts DC (No Signal, Min. Volume)
TUNING RANGE—BROADCAST	540 — 1650KC		15MA @ 9 Volts DC (Signal, Normal Volume)

ALIGNMENT INSTRUCTIONS

ALIGNMENT INSTRUCTIONS—READ CAREFULLY BEFORE ATTEMPTING ALIGNMENT					
Volume control should be at maximum position. Output of signal generator should be no higher than necessary to obtain an output reading.					
Suggested Alignment Tools:					
A1, A2.....		GENERAL CEMENT #5009, 8195, 8274, 8275, 8728, 8729, 8987, 8988, 8989			
		WALSCO #2515, 2531, 2532			
A3, A4, A6.....		GENERAL CEMENT #8282, 8606, 8606-L, 9295, 9440			
		WALSCO #2526, 2543, 2544, 2545			
A5, A7.....		GENERAL CEMENT #5004, 5009, 8195, 8274, 8275, 8607, 8728, 8987, 8988, 8989, 9291			
		WALSCO #2515, 2520, 2522, 2531, 2532, 2534, 2537, 2538, 2523			
SIGNAL GENERATOR COUPLING	SIGNAL GENERATOR FREQUENCY	RADIO DIAL SETTING	OUTPUT METER	ADJUST	REMARKS
1. High side thru .05mfd to antenna stator lug of tuning gang. Low side to chassis.	455KC (400v Mod.)	Tuning gang fully open.	Across voice coil.	A1, A2, A3, A4	Adjust for maximum output.
2. Loop	1670KC	"	"	A5	Fashion loop of several turns of wire and radiate signal into loop of receiver. Adjust for maximum output.
3. "	600KC	600KC	"	A6	"
4. "	1400KC	1400KC Signal.	"	A7	Adjust for maximum output. Repeat Steps 2, 3, and 4.

HOWARD W. SAMS & CO., INC. Indianapolis 6, Indiana

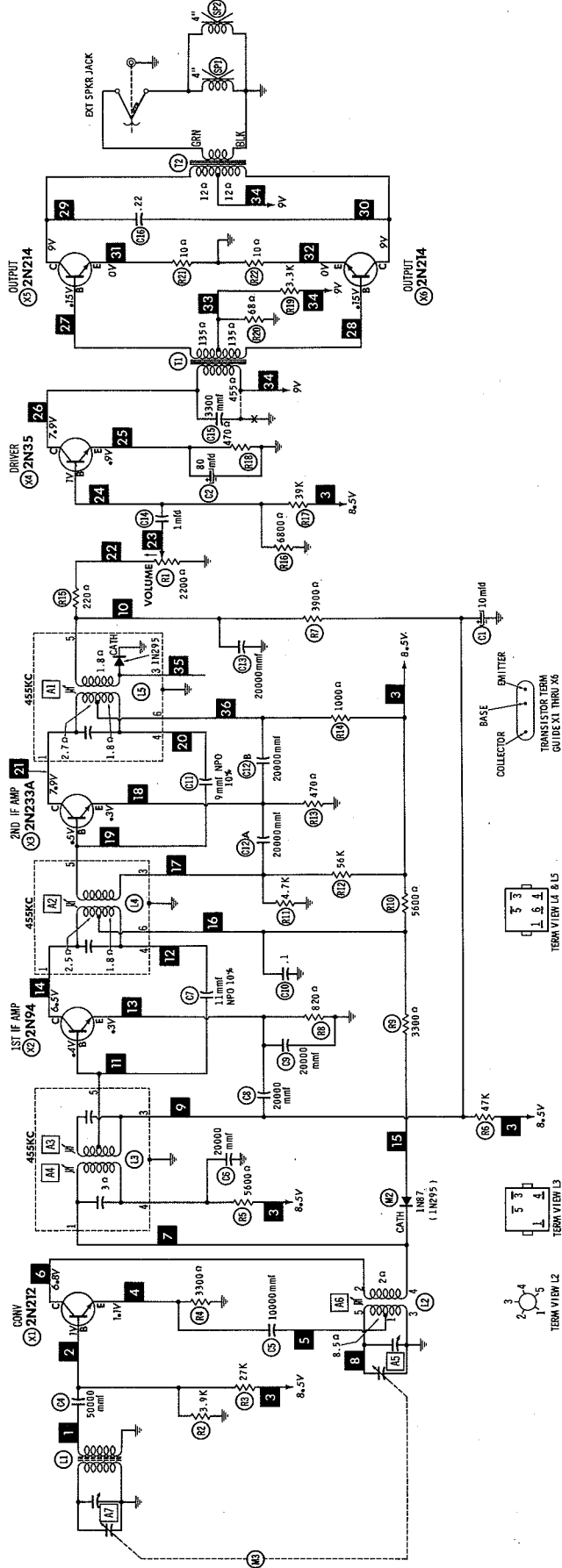


The listing of any available replacement part herein does not constitute in any case a recommendation, warranty or guaranty by Howard W. Sams & Co., Inc., as to the quality and suitability of such replacement part. The numbers of these parts have been compiled from information furnished to Howard W. Sams & Co., Inc., by the manufacturers of KG503

the particular type of replacement part listed. Reproduction or use, without express permission, of editorial or pictorial content, in any manner, is prohibited. No patent liability is assumed with respect to the use of the information contained herein. © 1961 Howard W. Sams & Co., Inc., Indianapolis 6, Indiana. Printed in U.S. of America

SILVERTONE MODELS
1016, 1017, 1018 (Ch. 132.60401)

SET 544 FOLDER 15

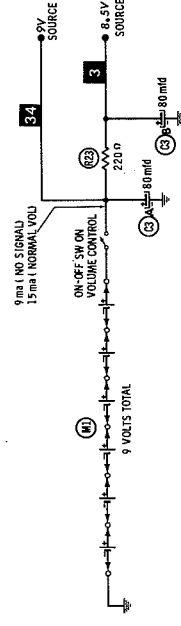


1. DC voltage measurements taken with vacuum tube voltmeter.
2. Socket connections or transistor terminals are shown as indicated.
3. Measured values are from socket pin or terminal to common ground.
4. Nominal tolerance on component values makes possible a variation of $\pm 5\%$ in voltage and resistance values.
5. Variation of $\pm 5\%$ in voltage and resistance values is indicated at maximum, no signal applied for voltage measurements.

RESISTANCE MEASUREMENTS NOT GIVEN BECAUSE OF THE WIDE VARIATION IN INTERNAL TRANSISTOR RESISTANCE.

RES COIL RESISTANCE VALUES UNDER ONE OHM NOT SHOWN ON SCHEMATIC DIAGRAM. ARROWS ON CONTROLS INDICATE CLOCKWISE ROTATION (CONTROL VIEWED FROM SHAF END).

NUMBERS ASSIGNED TO COILS, SWITCHES, PLUGS, SOCKETS, AND TRANSFORMERS ARE TO FACILITATE CIRCUIT TRACING OR COMPONENT REPLACEMENT AND MAY NOT NECESSARILY BE FOUND ON THE UNIT.



A PHOTOFACT STANDARD NOTATION SCHEMATIC with CIRCUIFACE

© Howard W. Sams & Co., Inc. 1961

SILVERTONE MODELS
1016, 1017, 1018 (Ch. 132.60401)

PARTS LIST AND DESCRIPTIONS (Continued)

TRANSFORMER (AUDIO OUTPUT)

ITEM No.	IMPEDANCE		REPLACEMENT DATA				NOTES
	PRI.	SEC.	SILVERTONE PART No.	Merit PART No.	Shanco PART No.	Thorndon PART No.	
T2	600 CT	3-40	45038-4				

SPEAKER

ITEM No.	TYPE	REPLACEMENT DATA		NOTES
		SILVERTONE PART No.	QUAM PART No.	
SP1	SIZE 4"	45600-15	440728-4	
SP2	4" PM 8-80	45600-15	440728-4	

BATTERIES

ITEM No.	VOLTAGE	REPLACEMENT DATA				NOTES
		SILVERTONE PART No.	BURGESS "A"	EVEREADY "B"	MALLORY "B"	
M1	1.5V	6445	230	A100	M-13R	6 Required

SIGNAL DIODES

ITEM No.	ORIG. TYPE	REPLACEMENT DATA			NOTES
		SILVERTONE PART No.	GENERAL ELECTRIC PART No.	RAYTHEON PART No.	
M2	1N87 *			1N87	Overload (Pilot) • Alternate Type 1N295

MISCELLANEOUS

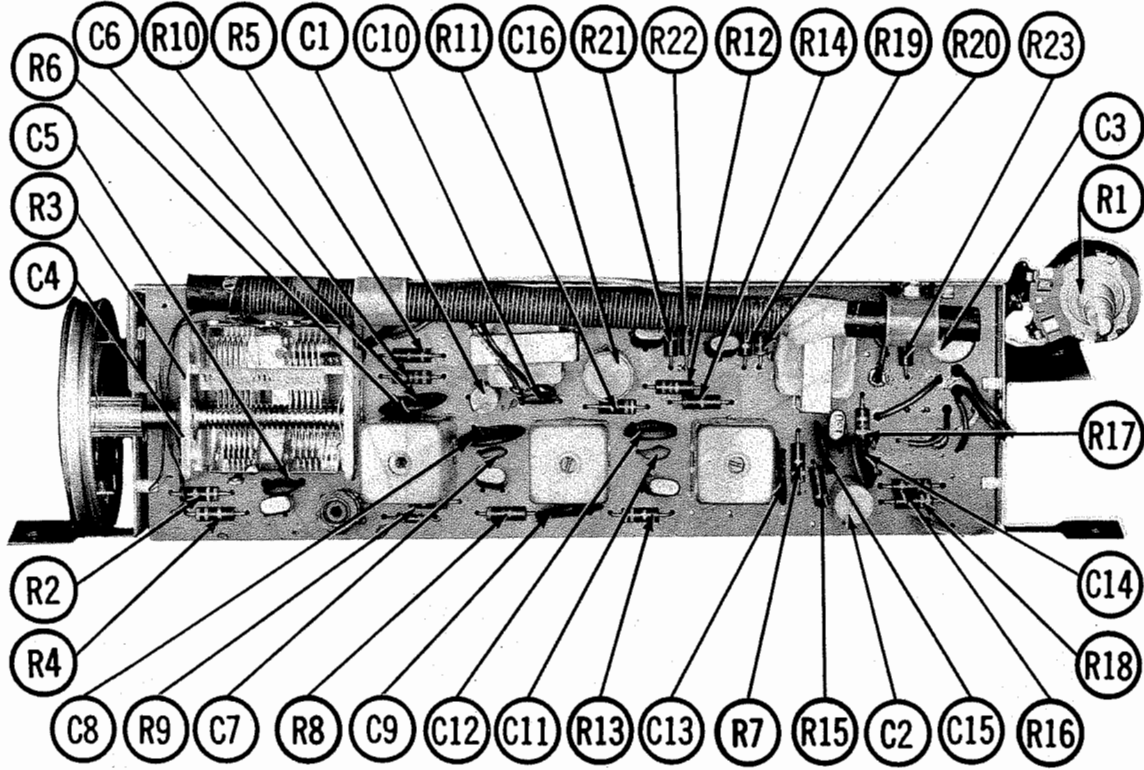
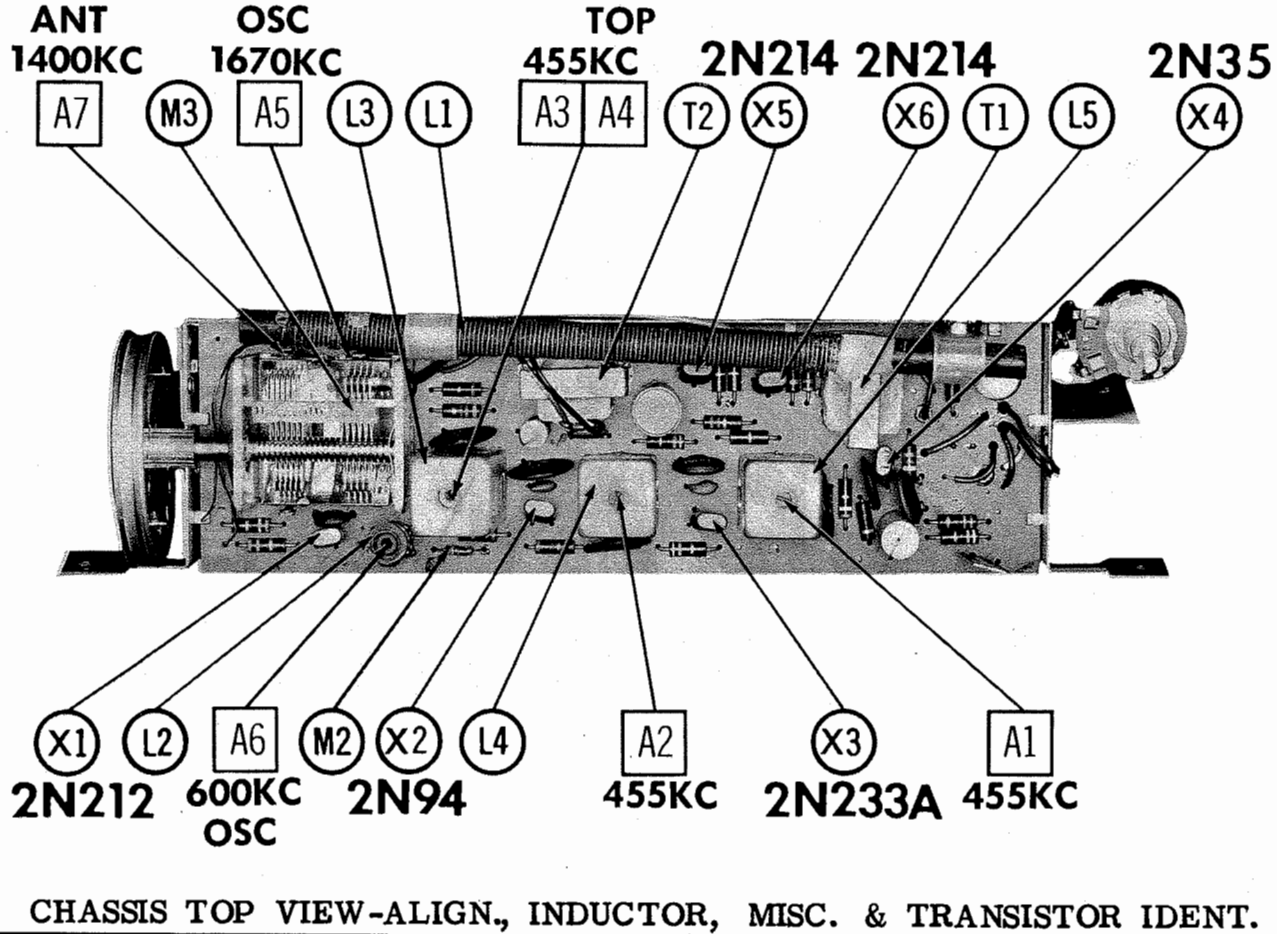
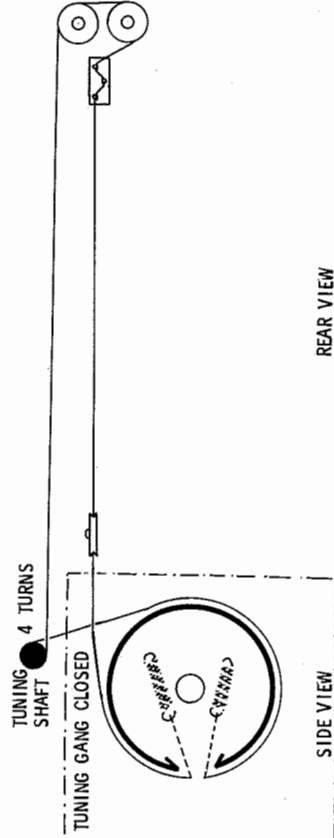
ITEM No.	PART NAME	SILVERTONE PART No.	NOTES
M3	Tuning Cap.	45039-1	2 Gang

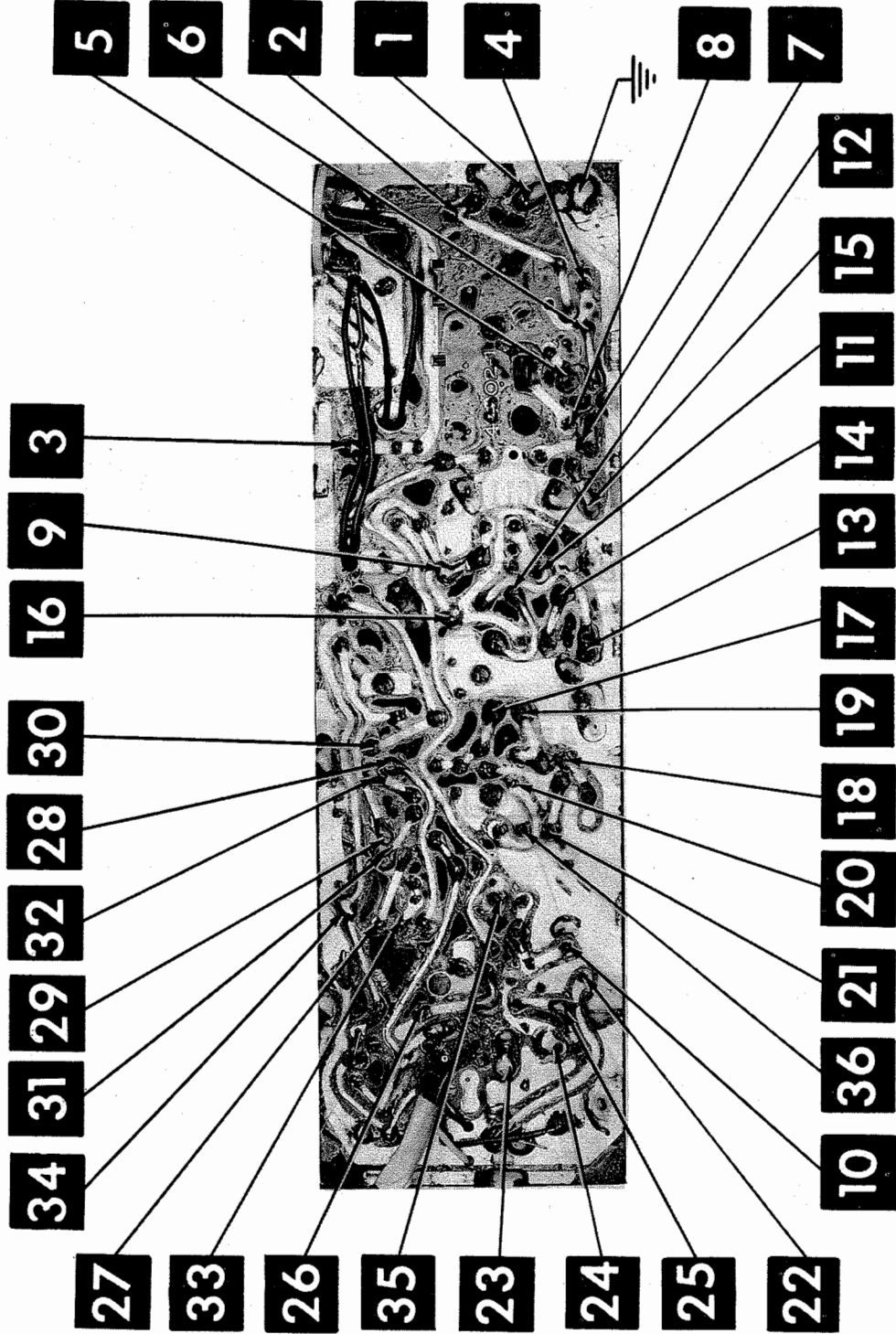
CABINETS & CABINET PARTS

(When Ordering Cabinets & Cabinet Parts, Specify Model, Chassis & Color)

NAME	PART NO.	DESCRIPTION
Dial Crystal	48786	
Dial Pointer	48820-1	
Knob	48818	
Cabinet Front	48804-67	Ivory, Model 1018
Cabinet Back	48805-67	Ice Blue, Model 1017
Cabinet Back	48805-86	Coral, Model 1018

DIAL CORD STRINGING





PARTS LIST AND DESCRIPTIONS

WIRING DATA

General-use Unshielded Hook-up Wire Use BELDEN No. 8530 (Solid) Available in Ten Colors
8524 (Stranded) Available in Ten Colors

TRANSISTORS

ITEM No.	ORIG. TYPE	USE	REPLACEMENT DATA				NOTES
			BCA PART No.	RAYTHEON PART No.	SILVANIA PART No.		
X1	2N212	Converter		2N1366	2N212	NPN	
X2	2N94	1st IF Amplifier	2N410	2N1367	2N94	NPN	
X3	2N233A	2nd IF Amplifier		2N1367	2N233A	NPN	
X4	2N35	Driver	2N649		2N35	NPN	
X5	2N214	Output	2N649		2N214	NPN	
X6	2N214	Output	2N649		2N214	NPN	

ELECTROLYTIC CAPACITORS

ITEM No.	RATING	CAP.	VOLT.	REPLACEMENT DATA				NOTES
				AEROVOX PART No.	SILVERTONE PART No.	CORNELL-DUBILIER PART No.	MALLORY PART No.	
C1	10	10	10	PTT-10010	44396-4	NLW10-15	TT12X10	
C2	80	10	10	PTT-10100	44396-5	NLW100-12	TT15X100	TE-1114, 3
C3A	80	12	12	BCD10X8080	44397-3	ECPAN14	PETA2385	VL-2350
B	80	12	12					MLV100-12

FIXED CAPACITORS
Capacity values given in the rating column are in mfd. for Paper Capacitors, and in mmfd. for Mica and Ceramic Capacitors.

ITEM No.	RATING	REMARKS	REPLACEMENT DATA				SPRAGUE PART No.
			AEROVOX PART No.	CENTRALAB PART No.	CORNELL-DUBILIER PART No.	ELMENDO PART No.	
C4	50000		BPD-05	DD-503	DD-503	IDP-2-503	GP150
C5	10000		BPD-01	DD-103	DD-103	CCD-103	B-10
C6	20000		BPD-02	DD-203	DD-203	CCD-203	B-120
C7	1 NPO 10%		NPO-DI 10	DTZ-10	DTZ-10	CCO-100	CNO-410
C8	20000		BPD-02	DD-203	DD-203	CCD-203	B-120
C9	20000		BPD-02	DD-203	DD-203	CCD-203	B-120
C10	10000		C80V104AM	UK10-104	UK10-104	CCO-100	B-120
C11	10000		NPO-DI 10	DTZ-10	DTZ-10	CCO-100	CNO-410
C12A	20000		BPD-2X02	DD-203	DD-203	CCD-203	B-120
C12B	20000		BPD-2X02	DD-203	DD-203	CCD-203	B-120
C13	20000		BPD-02	DD-203	DD-203	CCD-203	B-120
C14	20000		BPD-02	DD-203	DD-203	CCD-203	B-120
C15	3000		BPD-0033	UK-105	UK-105	CCD-203	B-233
C16	22 100V		P215IN-22	DD-332	BVA10D33	CCD-332	ACE-4022

CONTROLS

ITEM No.	RATING	RESISTANCE	WATTS	REPLACEMENT DATA				INSTALLATION NOTES
				SILVERTONE PART No.	CENTRALAB PART No.	CLAROSTAT PART No.	CTS-IRC PART No.	
RLA	2200Ω	1/2		47500-13	B-702		Q13-111	Volume
B	Shaft				Not Req.		Not Req.	
C	Bushing				Not Req.		Not Req.	
D	Switch				KR-1		76-1	Power Off-On

RESISTORS

All wattages 1/2 watt, or less, unless otherwise listed.

ITEM No.	RATING	REPLACEMENT DATA		ITEM No.	RATING	REPLACEMENT DATA	
		IRC PART No.	WORKMAN TV PART No.			IRC PART No.	WORKMAN TV PART No.
R2	3900Ω			RL3	470Ω		
R3	27K			RL4	100Ω		
R4	3300Ω			RL5	220Ω		
R5	5600Ω			RL6	6800Ω		
R6	47K			RL7	39K		
R7	3900Ω			RL8	470Ω		
R8	820Ω			RL9	3300Ω		
R9	3300Ω			R20	68Ω		
R10	5600Ω			R21	10Ω		
R11	4700Ω			R22	10Ω		
R12	56K			R23	220Ω		

COILS (RF-IF)

ITEM No.	USE	REPLACEMENT DATA			NOTES
		SILVERTONE PART No.	Merit PART No.	Stancor PART No.	
L1	Loopstick	4586L-8			
L2	Sec. IF	45783-3			
L3	1st IF	47733-3			
L4	2nd IF	45900-12			
L5	3rd IF	45900-13			

TRANSFORMER (DRIVER)

ITEM No.	TURNS RATIO	REPLACEMENT DATA			NOTES
		SILVERTONE PART No.	Merit PART No.	Stancor PART No.	
T1	1:2	45804-9			