

# ELECTRICAL PARTS LIST

Tuner & equalizer amp. unit section

Ref. No.	Part No.	Description	Remarks	Q'ty		Original Model
				SRC-2020	SRC-4040	
Tr101	2730025010	Transistor	2SC461 (B)	1	1	SRC-2020
Tr301, 302	2730171003	"	2SC1313 (F)	2	2	"
Tr303	2740035003	"	2SD234 (R)	1	1	"
Tr401	2730064055	"	2SC711 (F)	1	1	"
IC101	2630051003	IC	HA-1137W	1	1	"
IC201	2630043011	"	HA-1156R	1	1	"
IC401	2630040001	"	HA-1151	1	1	"
IC501, 502	2630024014	"	TA7122AP-C	2	2	"
IC501, 502	2630040001	"	HA-1151	2	2	"
D101, 201	2760049008	Diode	1S2076	2	2	"
D202	3939012001	" (LED)	SEL-103S	1	1	"
D301	2760204005	Diode	05Z13	1	1	"
S1-a ~ 1-f	2120105003	Function Switch		1	1	"
S501, 502	2124063002	Push Switch	For Mode Loudness	1	1	"
T101	2312004006	IF. DET. Transformer		1	1	"
T401	2311002009	AM. OSC. Coil		1	1	"
T402	2310036005	AM. IFT		1	1	"
T403	2313012000	AM. IF. Coil Ass'y		1	1	"
CF101, 102	2610008005	Ceramic Filter		3	3	"
103						
CF401	2610013003	"		1	1	"
L101, 403	TRT0565HI	Inductor	2.2 $\mu$ H	2	2	"
L102	2312005034	"	20 $\mu$ H	1	1	"
L103	2310035006	"	0.27 $\mu$ H	1	1	"
L401	TRT094424	"	820 $\mu$ H	1	1	"
VR201, 301	EP-74015	Semi Variable Resistor	10 k $\Omega$	2	2	"
VR501	2110151009	Variable Resistor (Volume Control)	250 k $\Omega$ (A)	1	1	"
FB-112U	216001005	Front End		1	1	"
J1, 2	2048021007	4P Connector Base		2	2	"
DIN	2048026002	5P DIN Jack		1	1	"
C101, 102, 104, 105, 107, 110, 112, 123, 125, 404, 405, 407, 409, 413, 420, 518	2531024003	Ceramic	0.01 $\mu$ F, 50 V	16	16	"
C103, 106, 115, 116	2531025002	Ceramic	0.022 $\mu$ F, 50 V	4	4	
C108, 411, 303, 304	2544044009	Electrolytic	1 $\mu$ F, 50 V	4	4	
C109	2544024003	"	4.7 $\mu$ F, 25 V	1	1	
C111, 203, 204, 205, 414	2544043000	"	0.47 $\mu$ F, 50 V	5	5	
C113	2533627000	Ceramic	100 pF, 50 V	1	1	
C114, 418	2533621006	"	56 pF, 50 V	2	2	
C201, 301, 302	2544023004	Electrolytic	3.3 $\mu$ F, 25 V	3	3	
C202	2551080001	Plastic Film	0.047 $\mu$ F, 50 V	1	1	
C206, 207	2551121070	"	0.027 $\mu$ F, 50 V	2	2	
C208	2556091008	Styrol	470 pF, 50 V	1	1	

Ref. No.	Part No.	Description	Remarks	Q'ty		Original Model
				SRC-2020	SRC-4040	
C209, 410	2544015009	Electrolytic	10 $\mu$ F, 16 V	2	2	
C305	2544021006	"	470 $\mu$ F, 16 V	1	1	
C306	2544019005	"	220 $\mu$ F, 16 V	1	1	
C307	2544054002	"	22 $\mu$ F, 16 V	1	1	
C401	2533596005	Ceramic	3 pF, 50 V	1	1	
C402	2533608003	"	16 pF, 50 V	1	1	
C403	2556088008	Styrol	360 pF, 50 V	1	1	
C406	2533647006	Ceramic	15 pF, 50 V	1	1	
C408	2551060005	Plastic Film	0.001 $\mu$ F, 50 V	1	1	
C412	2551072006	"	"	1	1	
C415	2551120068	"	0.0033 $\mu$ F, 50 V	1	1	
C416, 515	2544003008	Electrolytic	100 $\mu$ F, 6.3 V	3	3	
516						
C419	2544018006	"	100 $\mu$ F, 16 V	1	1	
C501, 502	2544025002	"	10 $\mu$ F, 25 V	2	2	
C503, 504	2533619005	Ceramic	47 pF, 50 V	2	2	
C505, 506	2531004007	"	1 000 pF, 50 V	2	2	
C507, 508	2551121067	Plastic Film	0.022 $\mu$ F, 50 V	2	2	
C509, 510	2551120042	"	0.0022 $\mu$ F, 50 V	2	2	
C511, 512	2551121009	"	0.0068 $\mu$ F	2	2	
C513, 514	2549011011	Electrolytic	2.2 $\mu$ F, 50 V	2	2	
C517	2544051005	"	220 $\mu$ F, 50 V	1	1	
C551, 552	2551074004	Plastic Film	0.015 $\mu$ F, 50 V	2	2	
C553, 554	2533633007	Ceramic	180 pF, 50 V	2	2	
R101, 108,	2410290000	Carbon	100 $\Omega$ , 1/4 W	3	3	
406						
R103, 107	2410302008	"	330 $\Omega$ , 1/4 W	4	4	
109, 114						
R104, 206,	2410326000	"	3.3 k $\Omega$ , 1/4 W	8	8	
209, 305,						
306, 309,						
310, 407						
R105	2410337002	"	1 k $\Omega$ , 1/4 W	1	1	
R106	2410304006	"	390 $\Omega$ , 1/4 W	1	1	
R110	2410354001	"	47 k $\Omega$ , 1/4 W	1	1	
R111, 116	2410322004	"	2.2 k $\Omega$ , 1/4 W	4	4	
201, 208						
R112, 511	2410340002	"	12 k $\Omega$ , 1/4 W	3	3	
512						
R113	2410346006	"	22 k $\Omega$ , 1/4 W	1	1	
R115, 205	2410336003	"	8.2 k $\Omega$ , 1/4 W	2	2	
R117, 204	2410342000	"	15 k $\Omega$ , 1/4 W	2	2	
R119, 507	2410378003	"	470 k $\Omega$ , 1/4 W	3	3	
508						
R202, 203,	2410324002	"	2.7 k $\Omega$ , 1/4 W	3	3	
408						
R207	2420156008	Solid	1.2 k $\Omega$ , 1/4 W	1	1	
R301, 302	2410761005	Carbon	680 k $\Omega$ , 1/4 W	2	2	
R303, 304	2410350005	"	33 k $\Omega$ , 1/4 W	2	2	
R307, 308	2410298002	"	220 $\Omega$ , 1/4 W	2	2	
R311	2410328008	"	3.9 k $\Omega$ , 1/4 W	1	1	
R401	2410334005	"	6.8 k $\Omega$ , 1/4 W	1	1	
R402	2410320006	"	1.8 k $\Omega$ , 1/4 W	1	1	
R403	2410332007	"	5.6 k $\Omega$ , 1/4 W	1	1	
R404, 405,	2410338001	"	10 k $\Omega$ , 1/4 W	3	3	

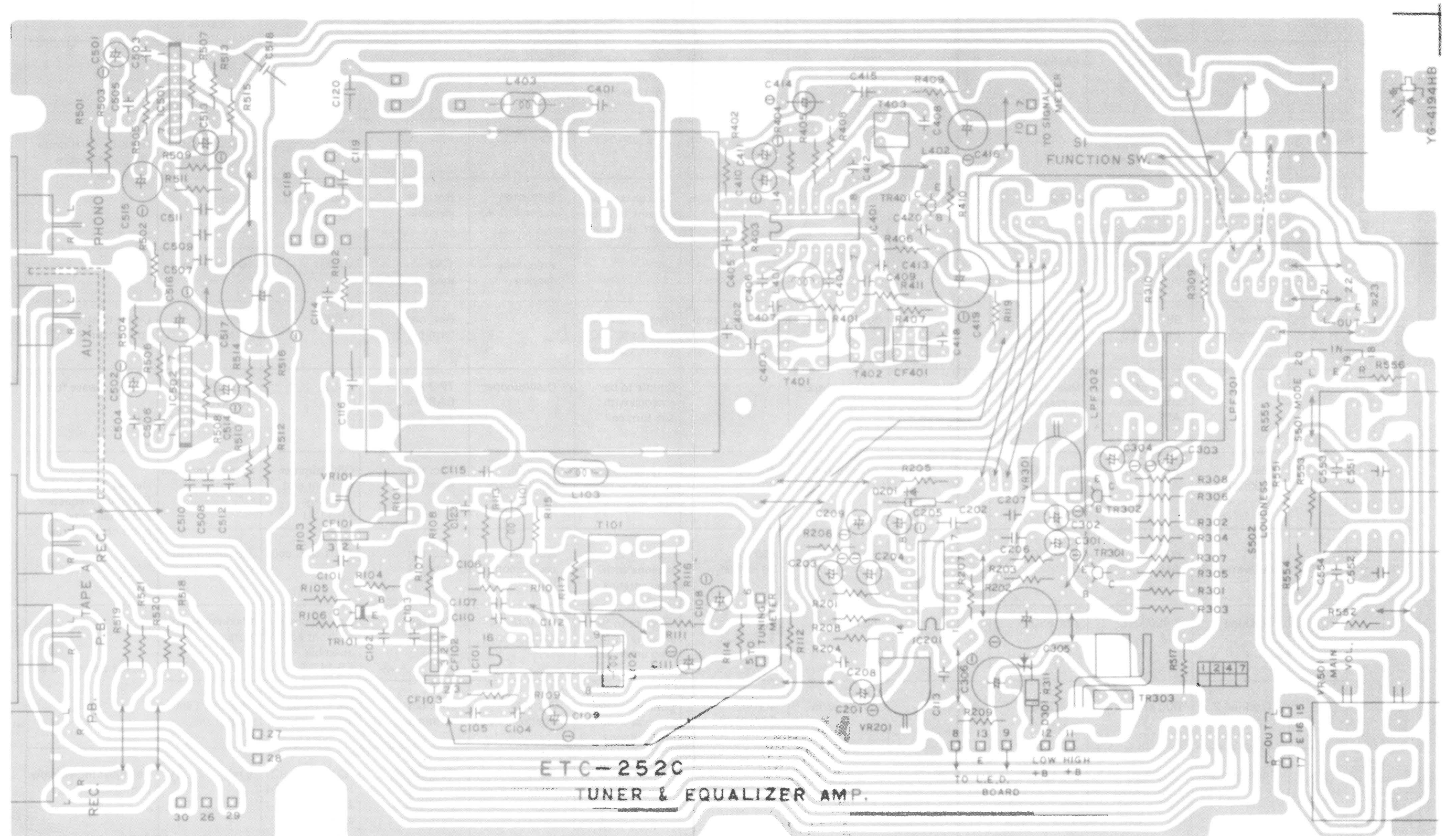
ALIGNMENT PROCEDURE

		STEP	ITEM	DIAL SETTING & FUNCTION	STANDARD SIGNAL GENERATOR					INDICATOR				REMARKS
					TYPE	FREQ.	TUNER INPUT LEVEL	MODULATION	COUPLING	TYPE	CONNECTED TO	ADJUST	ADJUSTMENT LIMITS	
SRC-2020/4040	FM/MULTIPLEX ALIGNMENT	1	Dial calibration	92 MHz FM-AUTO	FM SSG	92 MHz	60 dBμV	1 kHz ± 75 kHz deviation	Through dummy antenna to 300 Ω ant. terminal	Tuning meter		Pointer		Repeat several times (2) (3) Minimum distortion
		2	Detector-1	Point of no interference & station FM-AUTO						Tuning meter		Bottom of T101 (primary)	Mid point indication of tuning meter	
		3	Detector-2	98 MHz FM-AUTO	FM SSG	98 MHz	60 dBμV	1 kHz ± 75 kHz deviation	Through dummy antenna to 300 Ω ant. terminal	Distortion meter (0.3 %)	Rec. out terminal	Top of T101 (secondary)	Minimum distortion (0.1 – 0.2 %)	
		4	PLL 19 kHz	FM-AUTO						Frequency counter	TP-2 through 100 kΩ	VR201	19 kHz ± 50 Hz	
		5	Stereo separation	98 MHz FM-AUTO	FM SSG Stereo SSG	98 MHz	60 dBμV	L or R channel ± 33.75 kHz dev. Pilot ± 7.5kHz dev.	Through dummy antenna to 300 Ω ant. terminal		Rec. out terminal	VR301	Maximum separation	Check to alternate both channel
	AM ALIGNMENT	1	IF	Point of no interference AM	Sweep generator	455 kHz	Adjust output control		Couple to bar antenna with one turn coil	Oscilloscope	TP-3 & EARTH	T402	Maximum height 455 kHz and best symmetry curve	Check to wave form
		2	Dial calibration 1	1 400 kHz AM	AM SSG	1 400 kHz	50 dBμV/m	400 Hz 30 % Mod.	Connect to bar antenna with loop antenna	AC V.M. oscilloscope	Rec. out terminal	OSC trimmer on front end assembly FB-112U	Maximum audio output	Repeat step 2 and 3 Receiving frequency and detail indicator point obtain agree.
		3	Dial calibration 2	600 kHz AM	AM SSG	600 kHz	50 dBμV/m	400 Hz 30 % Mod.	Connect to bar antenna with loop antenna	AC V.M. oscilloscope	Rec. out terminal	T401 OSC coil	Maximum audio output	
		4	Tracking 1	1 400 kHz AM	AM SSG	1 400 kHz	50 dBμV/m	400 Hz 30 % Mod.	Connect to bar antenna with loop antenna	AC V.M. oscilloscope	Rec. out terminal	Ant. trimmer on front end assembly FB-112U	Maximum audio output	Repeat step 4 and 5
		5	Tracking 2	600 kHz AM	AM SSG	600 kHz	50 dBμV/m	400 Hz 30 % Mod.	Connect to bar antenna with loop antenna	AC V.M. oscilloscope	Rec. out terminal	Bar antenna coil	Maximum audio output	
SRC-4040 ONLY	POWER AMP ALIGNMENT	1	Idling current						DC V.M. 100 mV scale	Test point	R911, 921, 923 R912, 922, 924 Jumper wire cutin order	5 mV – 25 mV	To adjust individually Lch, R ch.	



# Sankyo SCR-2020/-4040

Tuner & equalizer amp. unit circuit board mounting diagram (SRC-2020/4040)



## Sankyo SCR-2020/-4040

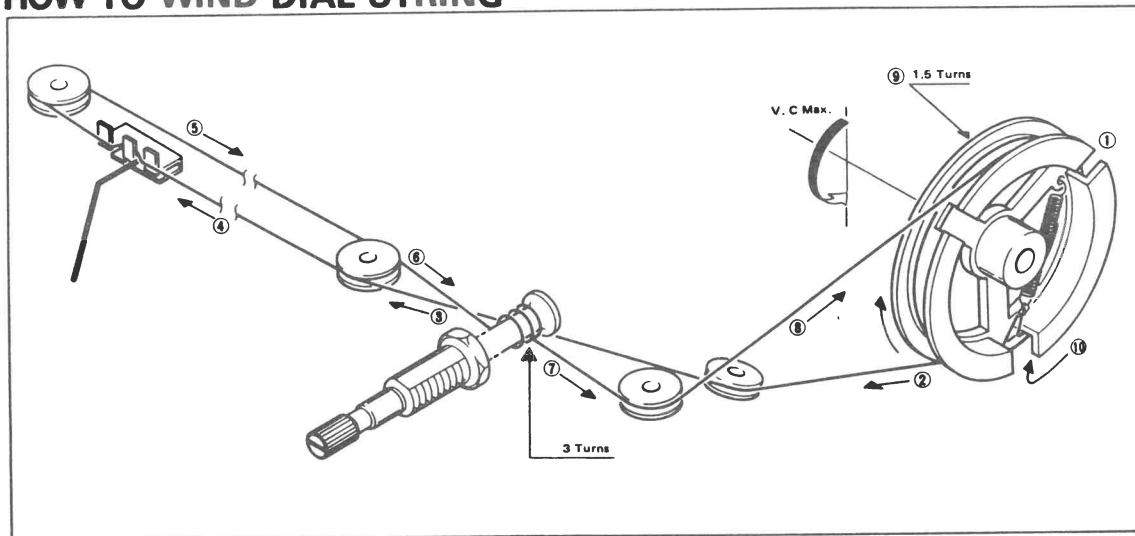
Ref. No.	Part No.	Description	Remarks	Q'ty		Original Model
				SRC-2020	SRC-4040	
R410 R409, 501, 502, 505 506, 520, 521	2410362006	Carbon	100 k $\Omega$ , 1/4 W	7	7	
R411	2410356009	"	56 k $\Omega$ , 1/4 W	1	1	
R503, 504	2410306004	"	470 $\Omega$ , 1/4 W	2	2	
R509, 510	2410365003	"	130 k $\Omega$ , 1/4 W	2	2	
R513, 514, 518, 519	2410374007	"	330 k $\Omega$ , 1/4 W	4	4	
R515, 516	2410274000	"	22 $\Omega$ , 1/4 W	2	2	
R517	2442007067	"	120 $\Omega$ , 1/4 W	1	1	
R551, 552	2410348004	"	27 k $\Omega$ , 1/4 W	2	2	
R553, 554	2420199007	Solid	4.7 k $\Omega$ , 1/4 W	2	2	
R555, 556	2410330009	Carbon	4.7 k $\Omega$ , 1/4 W	2	2	

### Power & control unit circuit board mounting diagram (SCR-2020 only)

Ref. No.	Part No.	Description	Remarks	Q'ty	Original Model
Tr701 ~ 704	2730171003	Transistor	2SC1313 (F, G)	4	SRC-2020
Tr801	2730112020	"	2SC1214 (D)	1	SRC-4040
IC901	2650022009	IC	STK-461	1	SRC-2020
D801 ~ 804	2760223002	Diode	V23C	4	"
D805, 806	2760191008	"	W03C	2	"
S601, 602	2120103005	Push switch		1	"
F901, 902	2061023053	Fuse (Time lag)	3.15A	2	"
VR701	2110117108	Variable resistor	250 k $\Omega$	1	"
VR702, 703	2110135009	"	100 k $\Omega$	2	"
C601, 602	2551121012	Plastic Film	0.0082 $\mu$ F, 50 V	2	
C701, 702	2541029001	Tantalum	1 $\mu$ F, 35 V	2	
C703, 704	2544043000	Electrolytic	0.47 $\mu$ F, 50 V	2	
C705, 706	2531004007	Ceramic	1000 pF, 50 V	2	
C707, 708, 709, 710	2551076002	Plastic Film	0.022 $\mu$ F, 50 V	4	
C711, 712	2541032001	Electrolytic	3.3 $\mu$ F, 50 V	2	
C713, 714, 717, 718	2544045008	"	3.3 $\mu$ F, 50 V	4	
C715, 716	2533649004	Ceramic	22 pF, 50 V	2	
C801, 802	2546012013	Electrolytic	3300 $\mu$ F, 35 V	2	
C803, 806, 807, 808	2531053003	Ceramic	0.01 $\mu$ F, 500 V	4	
C804	2544051005	Electrolytic	220 $\mu$ F, 50 V	1	
C805, 812	2544053003	"	470 $\mu$ F, 50 V	2	
C809, 810	2544050006	"	100 $\mu$ F, 50 V	2	
C811	2531024003	Ceramic	0.01 $\mu$ F, 50 V	1	
C901, 902	2533665004	"	470 pF, 50 V	2	
C903, 904	2544044009	Electrolytic	1 $\mu$ F, 50 V	2	
C905, 906	2544003008	"	100 $\mu$ F, 6.3 V	2	
C907, 908	2533598003	Ceramic	5 pF, 50 V	2	
C909, 910	2544017007	Electrolytic	47 $\mu$ F, 16 V	2	
C911, 912	2531026001	Ceramic	0.047 $\mu$ F, 50 V	2	
C913, 914	2544035005	Electrolytic	10 $\mu$ F, 35 V	2	
C915	2544038002	"	100 $\mu$ F, 35 V	1	
R601, 602, 605, 606	2410332007	Carbon	5.6 k $\Omega$ , 1/4 W	4	

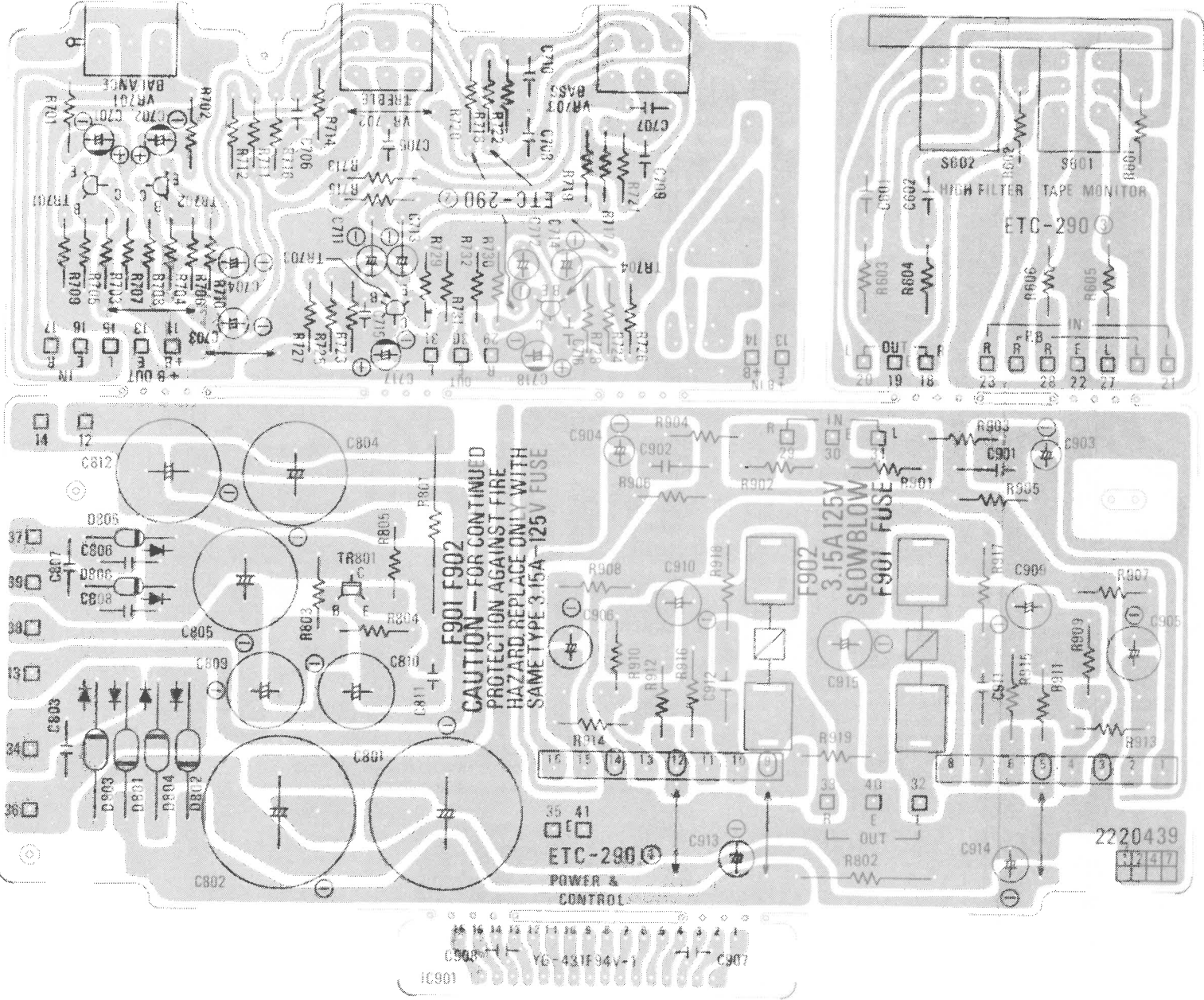
Ref. No.	Part No.	Description	Remarks	Q'ty	Original Model
R603, 604	2410759004	Carbon	560 k $\Omega$ , 1/4 W	2	
R701, 702	2410306004	"	470 $\Omega$ , 1/4 W	2	
R703, 704, 723, 724	2410765001	"	1 M $\Omega$ , 1/4 W	4	
R705, 706,	2410374007	"	330 k $\Omega$ , 1/4 W	4	
711, 712					
R707, 708	2410332007	"	5.6 k $\Omega$ , 1/4 W	2	
R709, 710	2410314009	"	1 k $\Omega$ , 1/4 W	2	
R713, 714, 715, 716,	2410346006	"	22 k $\Omega$ , 1/4 W	6	
719, 720					
R717, 718	2410348004	"	27 k $\Omega$ , 1/4 W	2	
R721, 722	2410378003	"	470 k $\Omega$ , 1/4 W	2	
R725, 726	2410360008	"	82 k $\Omega$ , 1/4 W	2	
R727, 728	2410333006	"	6.2 k $\Omega$ , 1/4 W	2	
R729, 730	2410292008	"	120 $\Omega$ , 1/4 W	2	
R731, 732	2410362006	"	100 k $\Omega$ , 1/4 W	2	
R801	2440147000	Metal Oxide Film	330 $\Omega$ , 3 W	1	
R802	2440098007	Metal Oxide Film	1 k $\Omega$ , 2 W	1	
R803, 804	2410337002	Carbon	9.1 k $\Omega$ , 1/4 W	2	
R805	2442007054	"	56 $\Omega$ , 1/4 W	1	
R901, 902	2410362006	"	100 k $\Omega$ , 1/4 W	2	
R903, 904	2410314009	"	1 k $\Omega$ , 1/4 W	2	
R905, 906 913, 914	2410350005	"	33 k $\Omega$ , 1/4 W	4	
R907, 908	2410315008	"	2.7 k $\Omega$	2	
R909, 910	2410326000	"	3.3 k $\Omega$ , 1/4 W	2	
R911, 912	2410314009	"	1 k $\Omega$ , 1/4 W	2	
R917, 918	2440013008	Metal Oxide Film	100 $\Omega$ , 1 W	2	
R919	2442007038	Carbon	100 $\Omega$ , 1/4 W	1	

## HOW TO WIND DIAL STRING



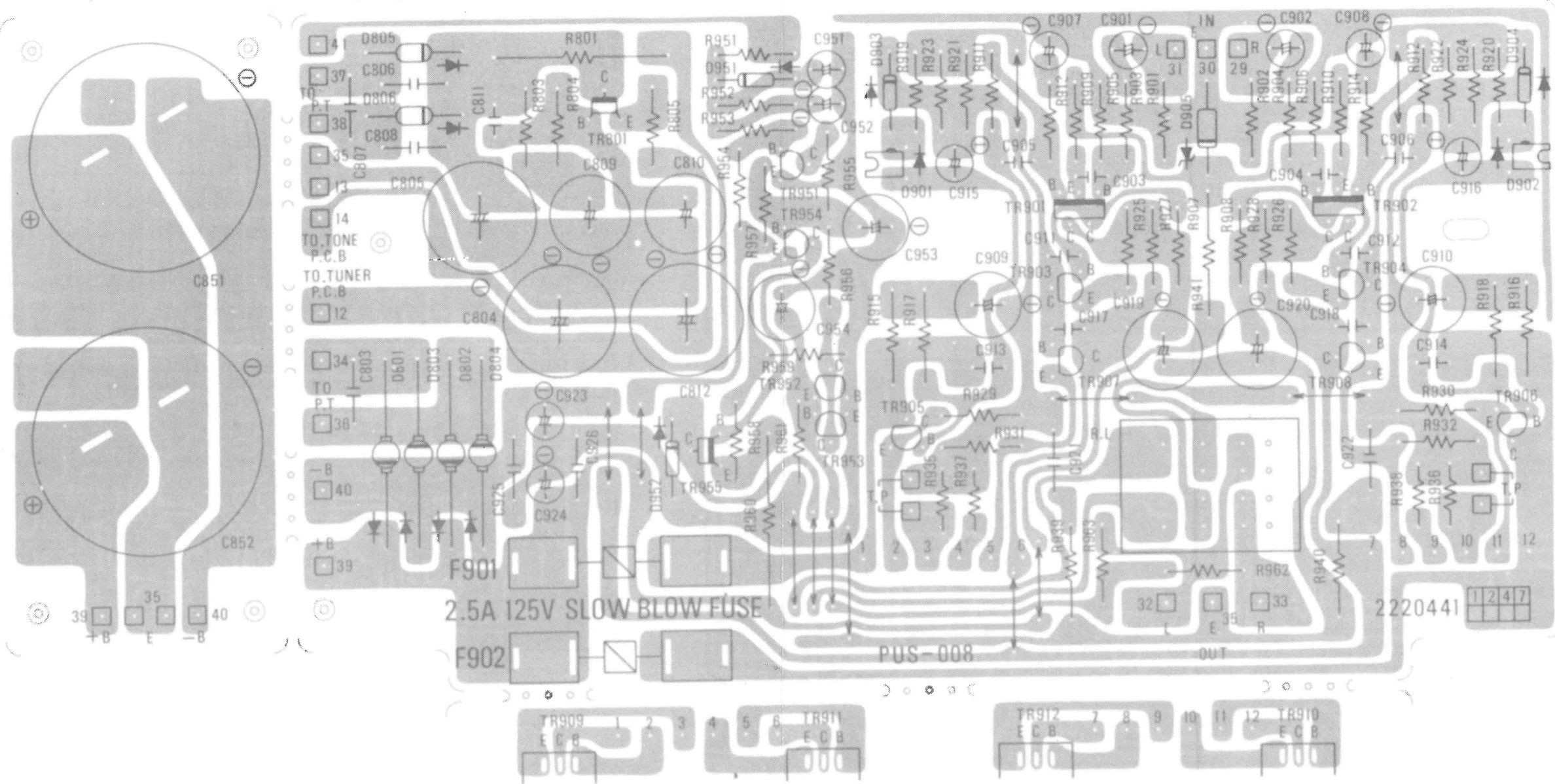


Power & control unit circuit board mounting diagram (SRC-2020)

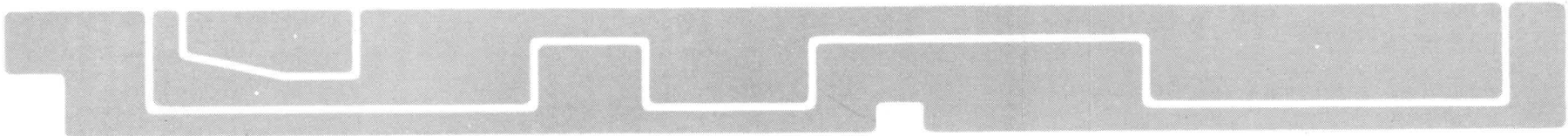


Sankyo SCR-2020/-4040

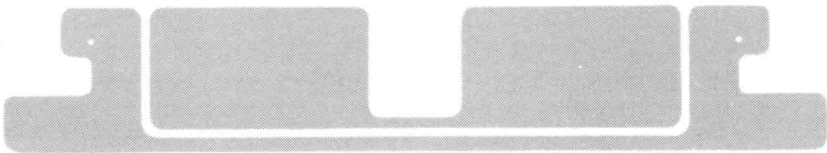
Power amp. unit circuit board mounting diagram (SRC-4040)



Lamp board (B) (SRC-2020/4040)



Lamp board (A) (SRC-2020/4040)





# Sankyo SCR-2020/-4040

## Control unit section (SRC-4040 only)

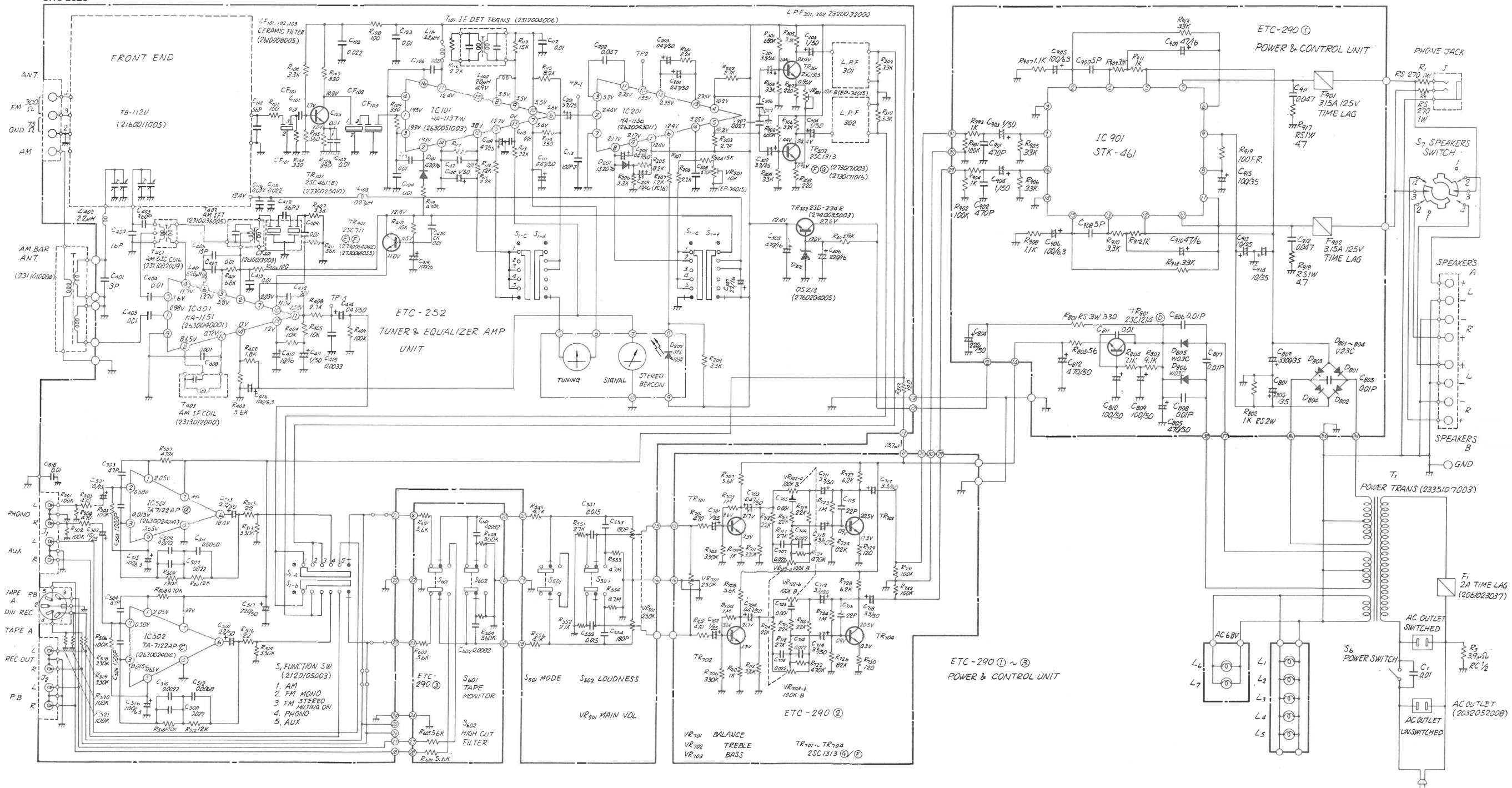
Ref. No.	Part No.	Description	Remarks	Q'ty	Original Model
Tr701 ~ 704	2730171003	Transistor	2SC1313 (F, G)	4	SRC-2020
S601 ~ 604	2124130003	Push Switch		1	SRC-4040
VR701	2110117108	Variable Resistor	250 k $\Omega$	1	"
VR702, 703	2110135009	"	100 k $\Omega$	2	"
J3	2048021007	4 P Connector Base		1	"
DIN	2048026002	5 P DIN Jack		1	"
C601, 602	2551121025	Plastic Film	0.01 $\mu$ F, 50 V	2	
C603, 604	2551121067	"	0.022 $\mu$ F, 50 V	2	
C701, 702	2541029001	Tantalum	1 $\mu$ F, 35 V	2	
C703, 704	2544045008	Electrolytic	3.3 $\mu$ F, 50 V	4	
713, 714					
C705, 706	3531004007	Plastic Film	0.001 $\mu$ F, 50 V	2	
C707, 708	2551076002	"	0.022 $\mu$ F, 50 V	4	
709, 710					
C711, 712,	2541032001	Electrolytic	3.3 $\mu$ F, 50 V	4	
717, 718					
C715, 716	2533611003	Ceramic	22 pF $\pm$ 5 %, 50 V	2	
R601, 602	2410332007	Carbon	5.6 k $\Omega$ , 1/4 W	4	
707, 708					
R603, 604	2410759004	"	560 k $\Omega$ , 1/4 W	2	
R605, 606	2420199007	Solid	4.7 M $\Omega$ , 1/4 W	2	
R611, 612	2410374007	Carbon	330 k $\Omega$ , 1/4 W	6	
705, 706,					
711, 712					
R613, 614	2410362006	"	100 k $\Omega$ , 1/4 W	4	
731, 732					
R701, 702	2410306004	"	470 $\Omega$ , 1/4 W	2	
R703, 704,	2410765001	"	1 M $\Omega$ , 1/4 W	4	
723, 724					
R709, 710	2410314009	"	1 k $\Omega$ , 1/4 W	2	
R713, 714,	2410346006	"	22 k $\Omega$ , 1/4 W	6	
715, 716,					
719, 720					
R717, 718	2410348004	"	27 k $\Omega$ , 1/4 W	2	
R721, 722	2410378003	"	470 k $\Omega$ , 1/4 W	2	
R725, 726	2410360008	"	82 k $\Omega$ , 1/4 W	2	
R727, 728	2410333006	"	6.2 k $\Omega$ , 1/4 W	2	
R729, 730	2410292008	"	120 $\Omega$ , 1/4 W	2	

## Other section

Ref. No.	Part No.	Description	Remarks	Q'ty		Original Model
				SRC-2020	SRC-4040	
T1	2335107003	Power transformer	No. 66	1	—	
T1	2335106004	"	"	—	1	
L1 ~ 7	2930016006	Pilot lamp	0.2A	7	7	
F1	2061023037	Fuse (time lag)	2A	1	—	
F1	2061023053	" "	3.15A	—	1	
S6	2124131002	Push switch		1	—	
S8	2124131002	"		—	1	
C1	2568005105	Ceramic	0.01 $\mu$ F	1	1	
R1, 2	2440034003	Metal oxide	270 $\Omega$	2	—	
		Film resistor				
R1, 2	2440092003	"	330 $\Omega$	—	2	
R3	2420076007	Solid resistor	3.9 M $\Omega$	1	1	

**Power amp. unit section (SRC-4040 only)**

Ref. No.	Part No.	Description	Remarks	Q'ty	Original Model
Tr801	2730112020	Transistor	2SC1214 (D)	1	SCS-4040
Tr901, 902	2710073008	"	2SA798 (G)	2	SRC-4040
Tr903, 904, 905, 906	2730163008	"	2SC1735 (C), (D)	4	"
Tr907, 908	2710072012	"	2SA850 (C), (D)	2	"
Tr909, 910	2740052002	"	2SD588 (R), (S)	2	"
Tr911, 912	2720033009	"	2SB618 (R), (S)	2	"
Tr951, 952, 953, 954	2730171016	"	2SC1313 (G)	4	"
Tr955	2710040044	"	2SA673A (B), (C)	1	"
D801, 802, 803, 804	2760192007	Diode	1R5DZ61	4	"
D805, 806	2760191008	"	W03C	2	SRC-2020
D901, 902	2760132025	"	STV-3H (O)	2	SRC-4040
D903, 904	2760171028	"	HV23G	2	"
D905	2760209000	"	AW08-16	1	"
D951, 952	2760049008	"	1S2076	2	SRC-2020
RL	2140016004	Relay		1	SRC-4040
F901, 902	2061023040	Fuse	2.5 A	2	"
C803, 806, 807, 808	2531053003	Ceramic	0.01 $\mu$ F, 500 V	4	
C804	2544051005	Electrolytic	220 $\mu$ F, 50 V	1	
C805, 812	2544053003	"	470 $\mu$ F, 50 V	2	
C809, 810	2544050006	"	100 $\mu$ F, 50 V	2	
C811	2531024003	Ceramic	0.01 $\mu$ F, 50 V	1	
C851, 852	2546011001	"	6 800 $\mu$ F, 50 V	2	
C901, 902, 915, 916, 951, 952	2544044000	"	1 $\mu$ F, 50 V	6	
C903, 904	2533631009	"	150 pF, 50 V	2	
C905, 906	2533598003	"	5 pF, 50 V	2	
C907, 908	2544054002	Electrolytic	22 $\mu$ F, 16 V	2	
C909, 910	2544028009	"	100 $\mu$ F, 25 V	2	
C911, 912	2533627000	Ceramic	100 pF, 50 V	2	
C913, 914,	2533635005	"	220 pF, 50 V	4	
917, 918					
C919, 920	2544050006	Electrolytic	100 $\mu$ F, 50 V	2	
C921, 922, 925, 926	2531027000	Ceramic	0.1 $\mu$ F, 50 V	4	
C923, 924	2544046007	Electrolytic	4.7 $\mu$ F, 50 V	2	
C953	2549008008	"	47 $\mu$ F, 50 V	1	
C954	2544004007	"	220 $\mu$ F, 6.3 V	1	
R801	2440147000	Carbon	330 $\Omega$ , 3 W	1	
R803, 804	2410337002	"	9.1 k $\Omega$ , 1/4 W	2	
R805	2442007054	"	56 $\Omega$ , 1/4 W	1	
R901, 902	2410362006	"	100 k $\Omega$ , 1/4 W	2	
R903, 904	2410316007	"	1.2 k $\Omega$ , 1/4 W	2	
R905, 906, 911, 912	2410351004	"	36 k $\Omega$ , 1/4 W	4	
R907, 908	2410309001	"	620 $\Omega$ , 1/4 W	2	
R909, 910	2410333006	"	6.2 k $\Omega$ , 1/4 W	2	
R913, 914	2410313000	"	910 $\Omega$ , 1/4 W	2	
R915, 916	2440046004	Metal Oxide Film	2.7 k $\Omega$ , 1 W	2	
R917, 918	2410193000	Carbon	2.2 k $\Omega$ , 1/2 W	2	
R919, 920	2410290000	"	100 $\Omega$ , 1/4 W	2	



S<sub>1a-f</sub>: FUNCTION SW (1. AM 2. FM, MONO 3. STEREO Muting ON 4. PHONO 5. AUX)

S<sub>601</sub> TAPE MONITOR SW (PUSH ON, PUSH SOURCE)

S<sub>602</sub> HIGH CUT FILTER SW (PUSH ON, PUSH OFF)

S<sub>501</sub> MODE SW (PUSH MONO, PUSH STEREO)

S<sub>502</sub> LOUDNESS SW (PUSH ON, PUSH OFF)

S<sub>6</sub> POWER SW (PUSH ON, PUSH OFF)

## NOTE

1. ALL RESISTORS ARE 1/4 WATTS UNLESS OTHERWISE SPECIFIED.
2. RESISTANCE IS IN OHMS UNLESS OTHERWISE SPECIFIED.
3. CAPACITOR VALUE IS IN MFD UNLESS OTHERWISE SPECIFIED.
4. EACH VOLTAGE OR CURRENT VALUE IS MEASURED WITHOUT A SIGNAL APPLIED TO THE UNIT.
5. IMPEDANCE OF THE TESTER IS DC 100KΩ/V, AC 10KΩ/V.

AC CORD WITH PLUG  
(206200/1003)



# Sankyo SCR-2020I-4040

