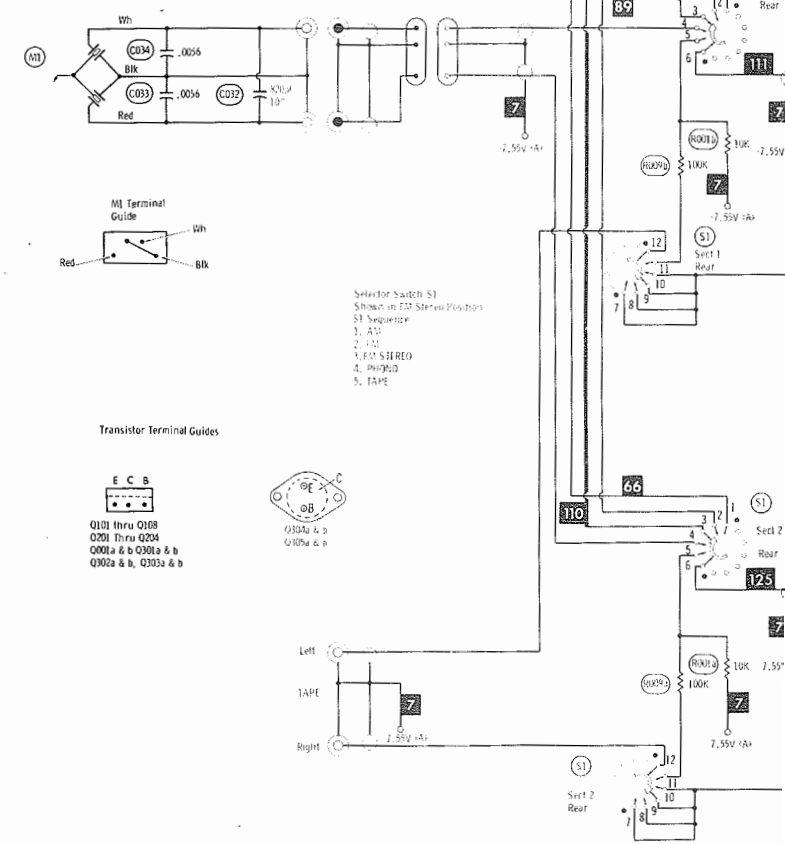
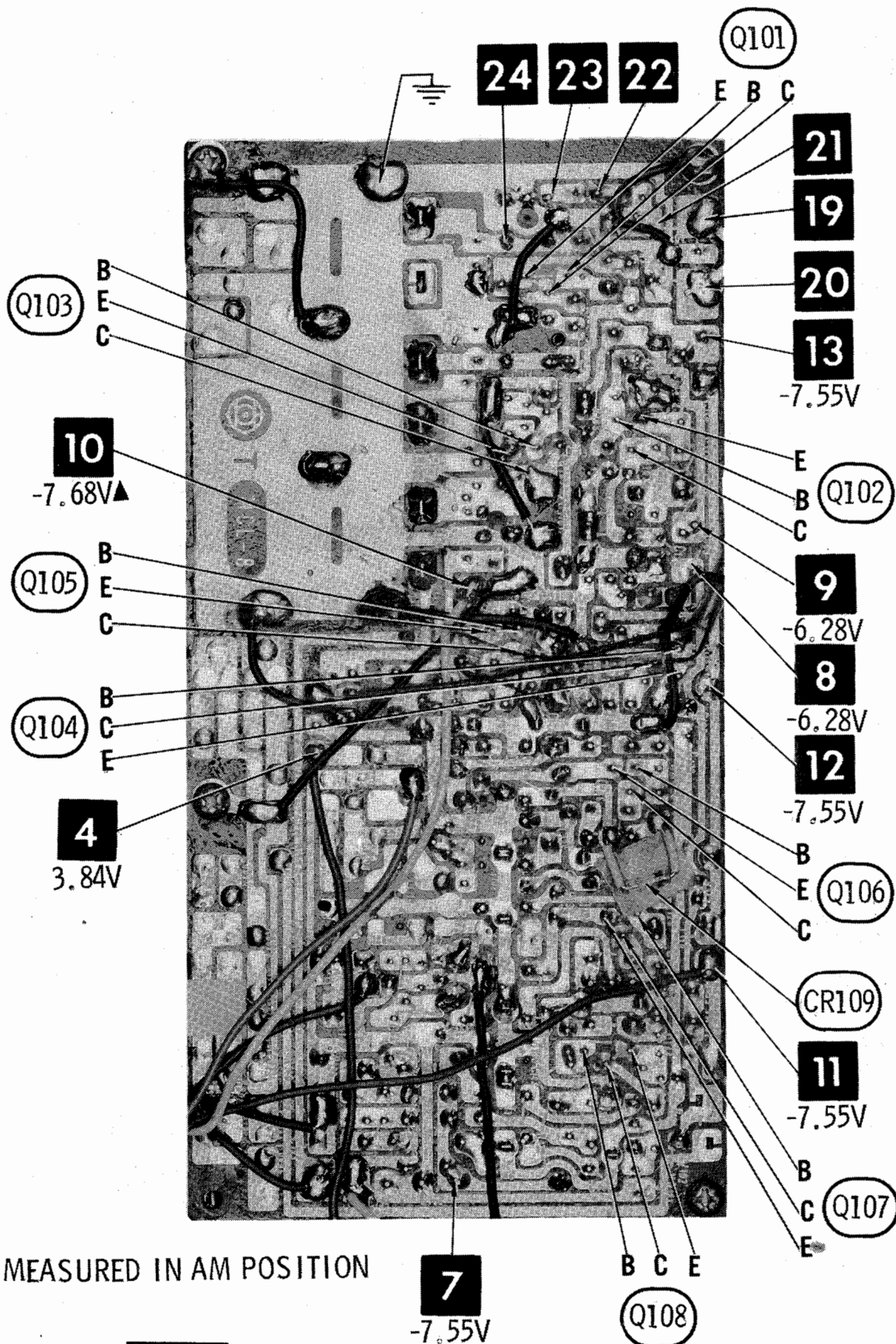


⚡ Denotes ground, (Voltage reference unless otherwise indicated).
 --- Indicates connection used in some versions.
 * Indicates connection not used in some versions.
 * Omitted in some versions.
 e See parts list.
 Measurements taken with switching in position shown unless otherwise indicated.
 ▲ Measured with switching in "AM" position.
 Values shown in () are used in some applications.
 Resistors are 1/2W or less, 10% or 20%, unless otherwise indicated.
 Supply voltage maintained at rated value for measurements.
 Voltage and resistance measured with VTVM or equivalent meter, no signal applied and controls adjusted for normal operation.
 Arrow on control indicates direction of advance.
 Numbers assigned to terminals may not be found on the unit.
 Transistor resistances vary widely. No resistance measurements taken.

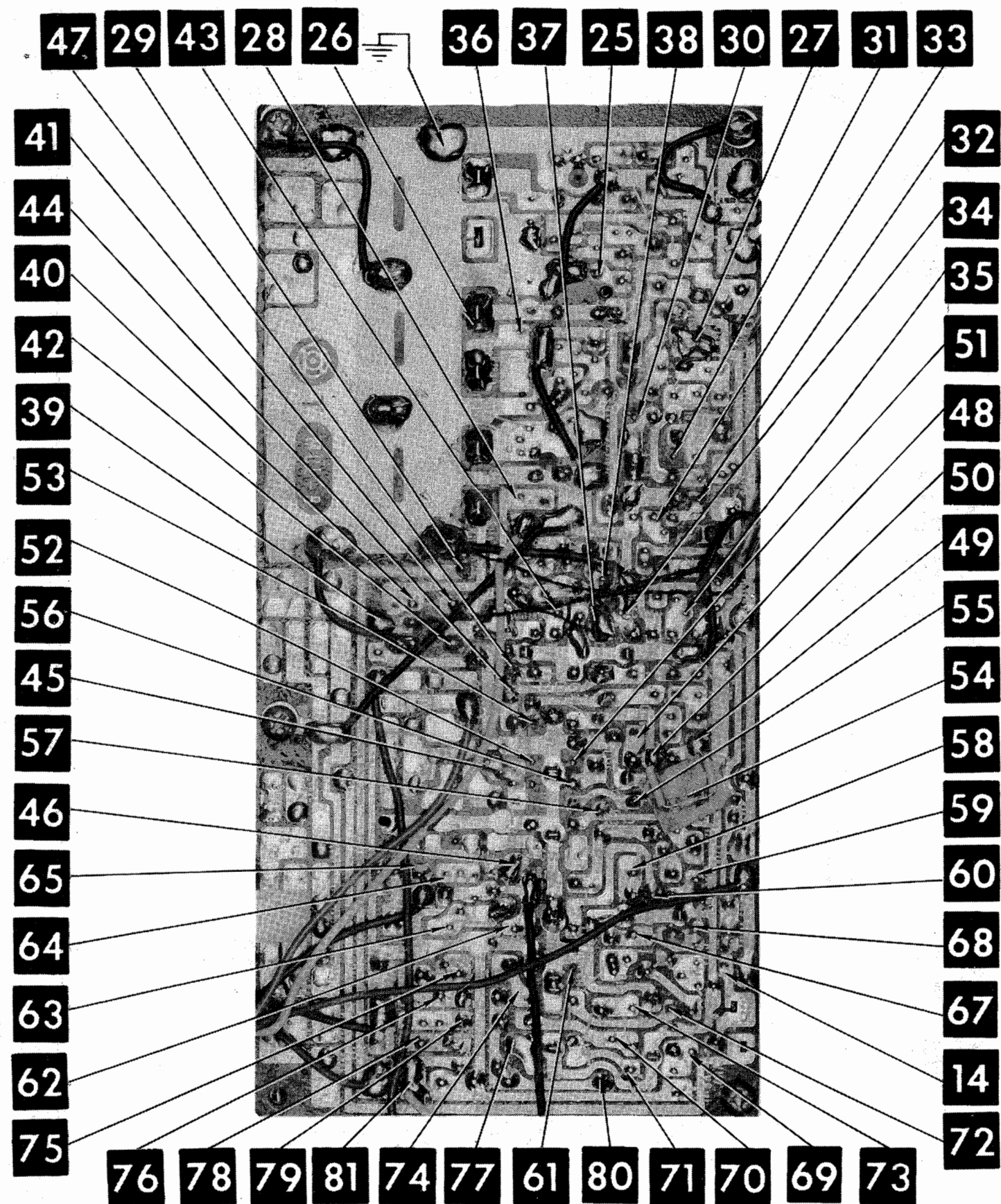
A PHOTOFACT STANDARD NOTATION SCHEMATIC
 with **CircuitPac**
 © Howard W. Sams & Co., Inc. 1972





▲ MEASURED IN AM POSITION

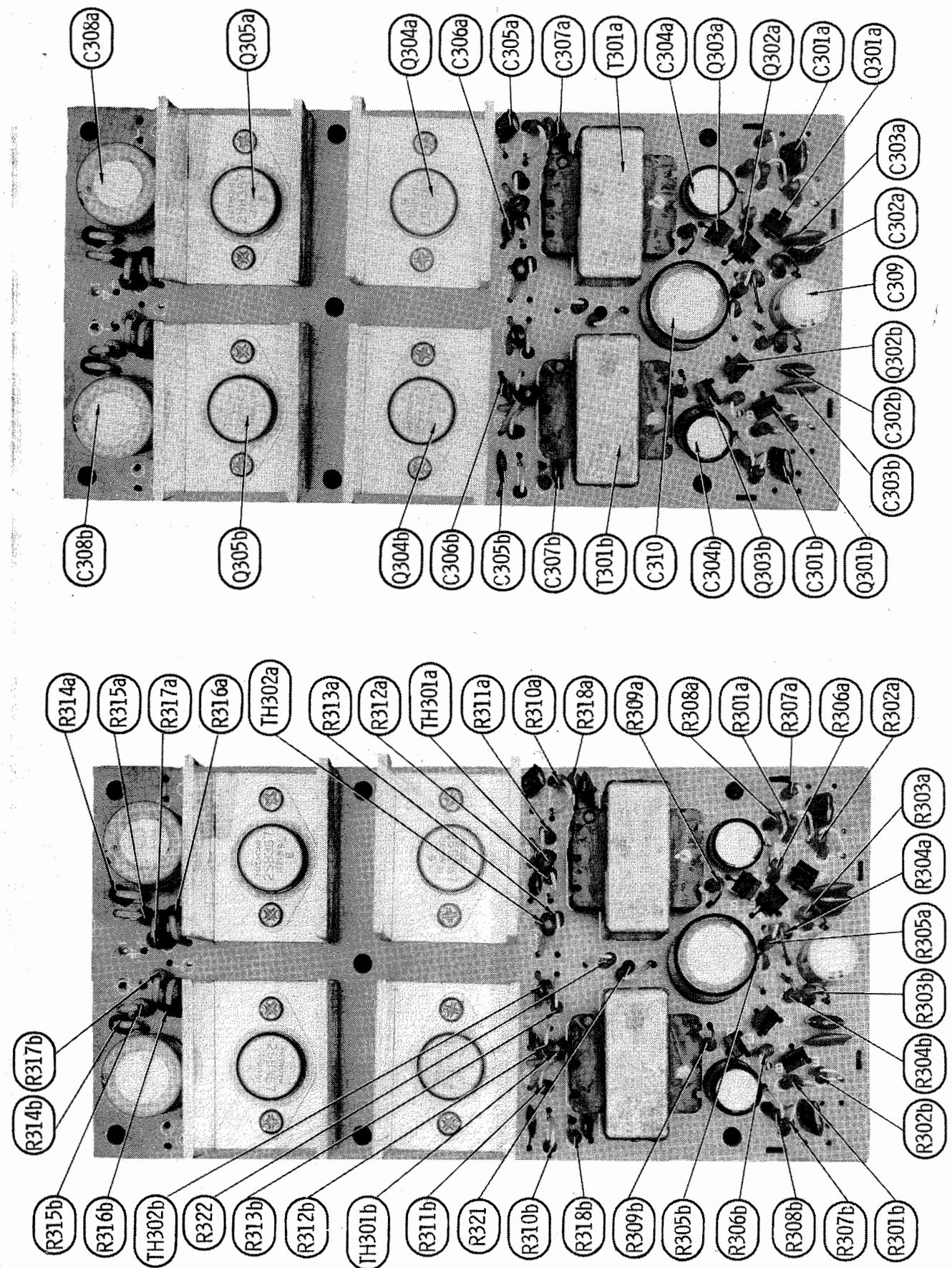
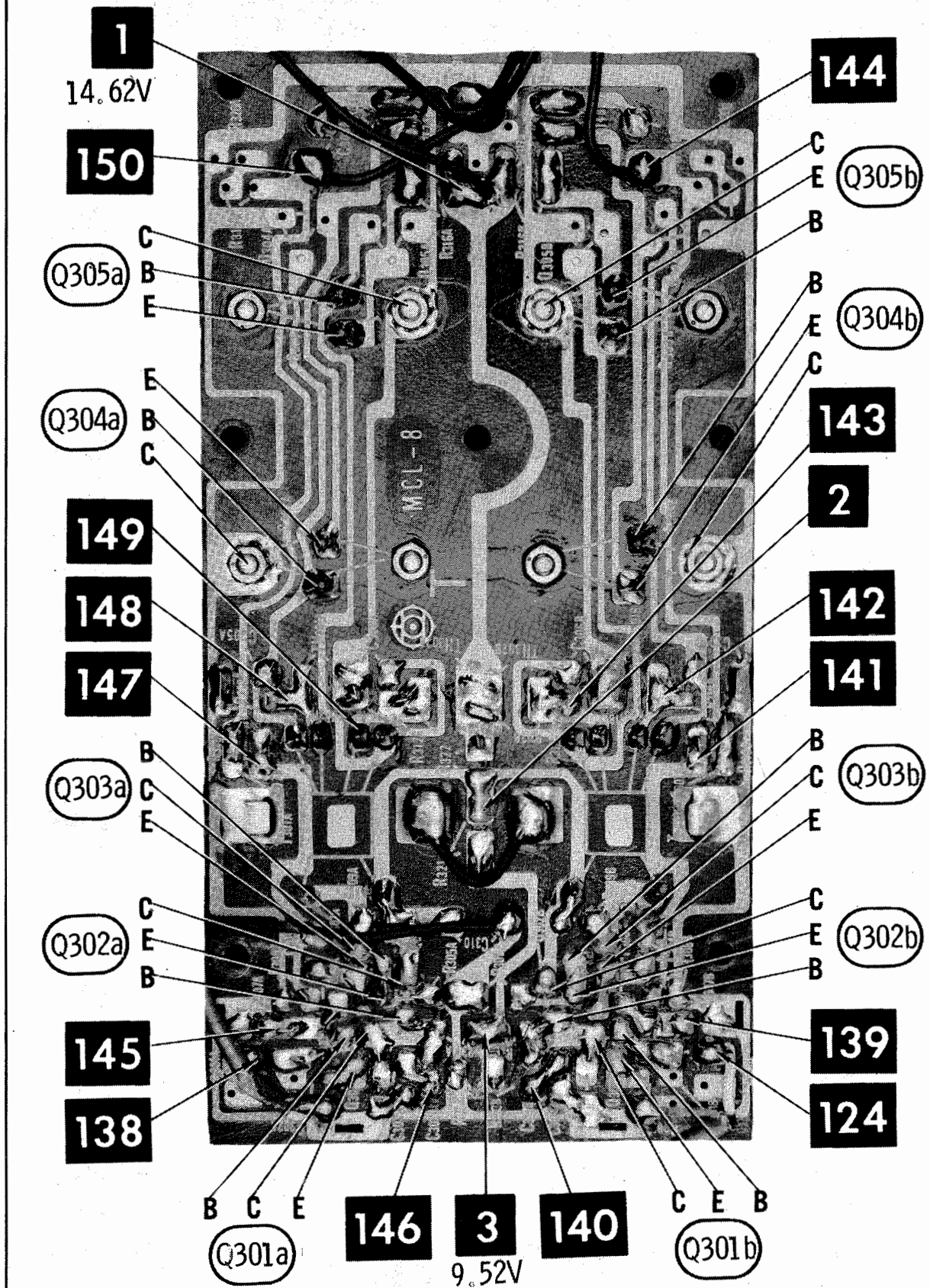
A Howard W. Sams CIRCUITRACE Photo

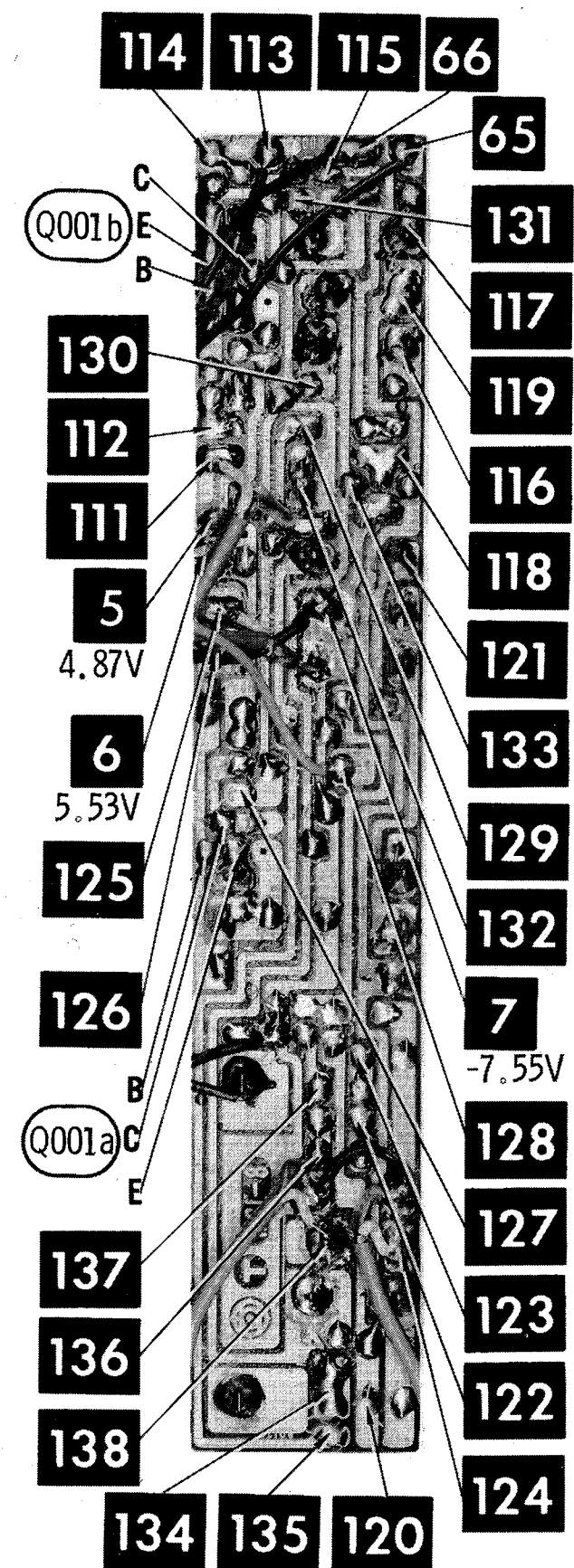
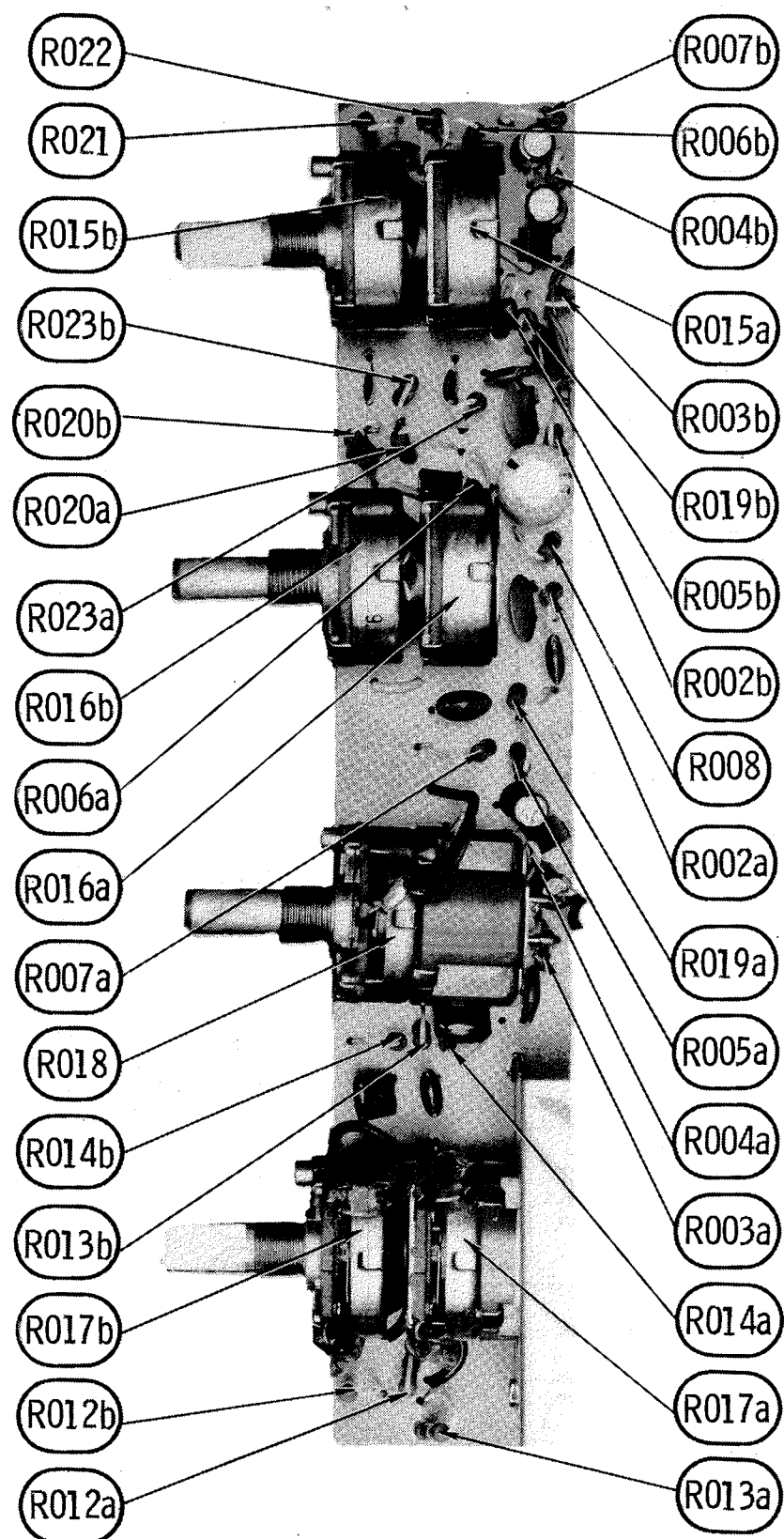
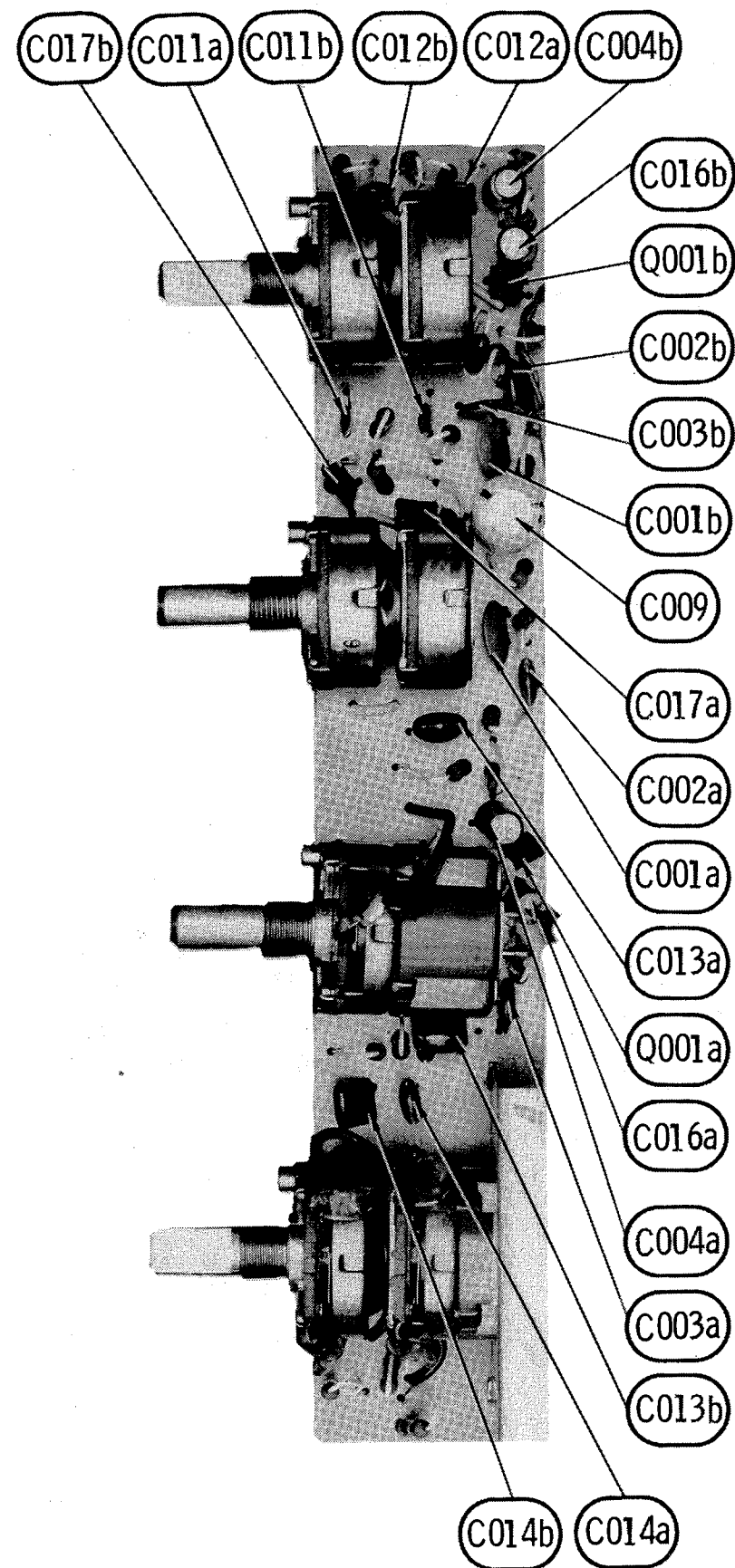


A Howard W. Sams CIRCUITRACE Photo

RCA CHASSIS
RC-3005, RC-3005A, RC-3005B

FOLDER 4





ALIGNMENT INSTRUCTIONS

CAUTION: Use isolation transformer or observe polarity when connecting test equipment. Maintain line voltage at 117VAC. Allow a 15-minute warm-up period. Use only enough generator output to obtain a suitable indication. Suggested Alignment Tools: GC ELECTRONICS A1 thru A6, A8 thru A17, A21, A22 .. 8868, 8987, 9089 A7, A18, A19, A20 9440

AM ALIGNMENT—SELECTOR IN AM POSITION

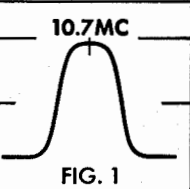
Connect generator across loop fashioned of several turns of wire. Set volume at maximum.

	GENERATOR FREQUENCY	RADIO DIAL SETTING	INDICATOR	ADJUST	REMARKS
1.	455KC 400 cycle modulation	Tuning gang fully open.	Output Meter across voice coil.	A1 thru A4	Adjust for maximum. Repeat until no further improvement can be made.
2.	1640KC	"	"	A5	Adjust for maximum.
3.	1400KC	Tune to signal	"	A6	"
4.	600KC	"	"	A7	Rock tuning gang and adjust for maximum. Repeat steps 2 thru 4 until no further improvement can be made.

FM IF ALIGNMENT USING AM SIGNAL GENERATOR—SELECTOR IN FM POSITION

High side of generator thru .001mfd to point B, low side to ground.

	GENERATOR FREQUENCY	RADIO DIAL SETTING	INDICATOR	ADJUST	REMARKS
5.	10.7MC Unmodulated	Point of non-interference	DC probe of VTVM to point C, common to -7.55V(A) Source.	A8 thru A13	Adjust for maximum.
6.	"	"	DC probe of VTVM to point D, common to -7.55V(A) Source.	A14	Adjust for zero reading. A positive or negative reading will be obtained on either side of the correct setting.



FM IF ALIGNMENT USING FM SIGNAL GENERATOR—SELECTOR IN FM POSITION

High side of generator thru .001mfd to point B, low side to ground. Use only enough marker signal for indication. Use 60 cycle frequency modulated signal with 450KC sweep. Use 60 cycle sawtooth voltage in scope for horizontal deflection.

	GENERATOR FREQUENCY	RADIO DIAL SETTING	INDICATOR	ADJUST	REMARKS
5.	10.7MC 450KC Sweep	Point of non-interference	Vert. amp of scope to point C, low side to ground.	A8 thru A13	Disconnect stabilizing capacitor C152. Adjust for maximum gain and symmetry of response similar to Fig.1 with marker as shown. Reconnect C152.
6.	"	"	Vert. amp of scope to point D, low side to ground.	A14	Adjust A14 (secondary) to place marker at center of "S" curve similar to Fig. 2. Readjust A8 (primary) for maximum amplitude and straightness of line.

FM RF ALIGNMENT—SELECTOR IN FM POSITION

Connect generator across antenna terminals with 120-ohm carbon resistor in series with each lead.

	GENERATOR FREQUENCY	RADIO DIAL SETTING	INDICATOR	ADJUST	REMARKS
7.	108.5MC	High freq. end	DC probe of VTVM to point C, common to -7.55V(A) Source.	A15, A16, A17	Adjust for maximum.
8.	90MC Unmodulated	Tune to signal.	"	A18, A19, A20	Rock tuning and adjust for maximum. Repeat steps 7 and 8 until no further improvement can be made.

ALIGNMENT INSTRUCTIONS (Continued)

FM STEREO MULTIPLEX ALIGNMENT USING FM STEREO SIGNAL GENERATOR (± .0001% ACCURACY)

High side of generator thru 47K to point D, low side to ground.

	GENERATOR FREQUENCY	INDICATOR	ADJUST	REMARKS
9.	19KC	Vert. amp of scope thru 47K to point G, low side to ground.	A21	Adjust for maximum.
10.	"	Vert. amp of scope thru 47K to point H, low side to ground.	A22	Adjust for maximum 38KC response.
11.	Modulated Left Channel	Vert. amp of scope to point J, low side to ground.	A21, A22, R230	Adjust for MINIMUM. This step should require only slight adjustment.
12.	Modulated Right Channel	Vert. amp of scope to point K, low side to ground		Check for MINIMUM. If necessary make compromise adjustment of A21, A22, & R230.

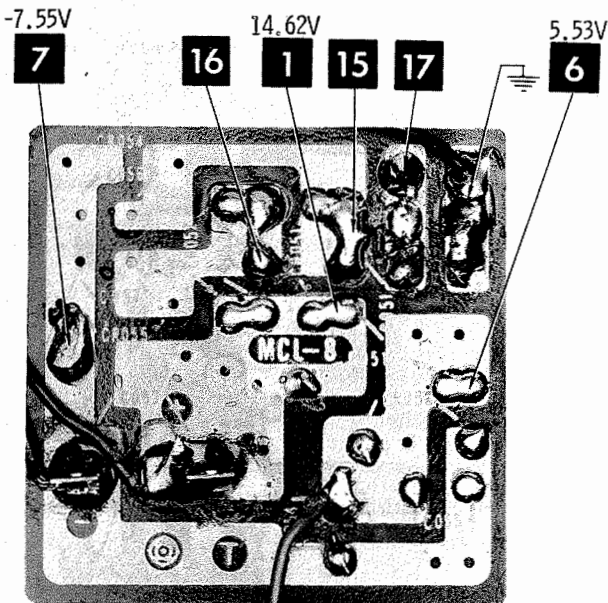
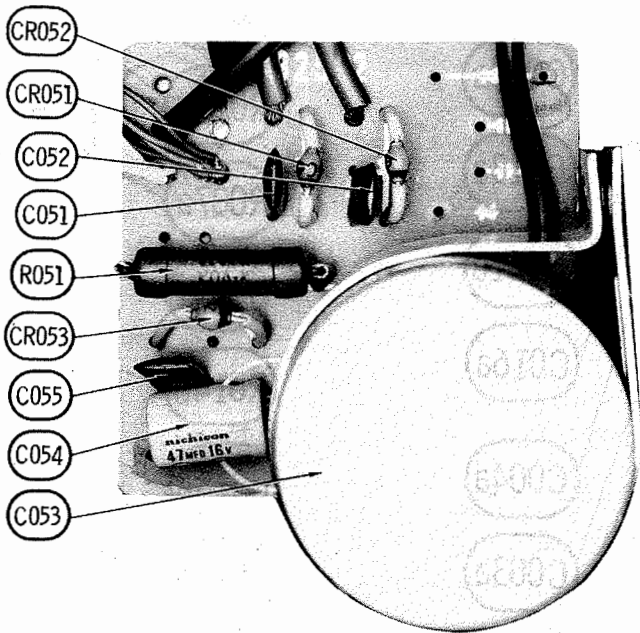
MISCELLANEOUS ADJUSTMENTS

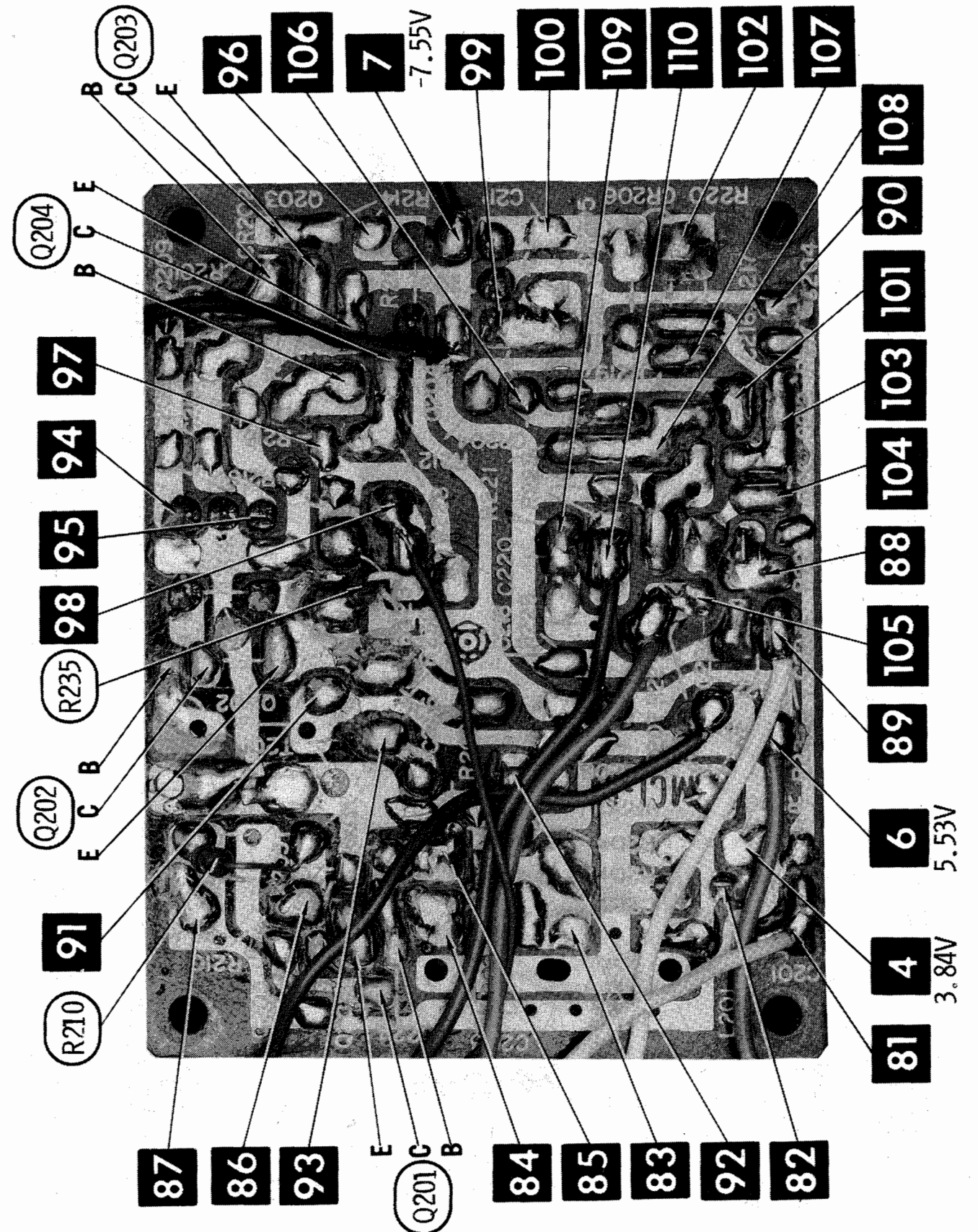
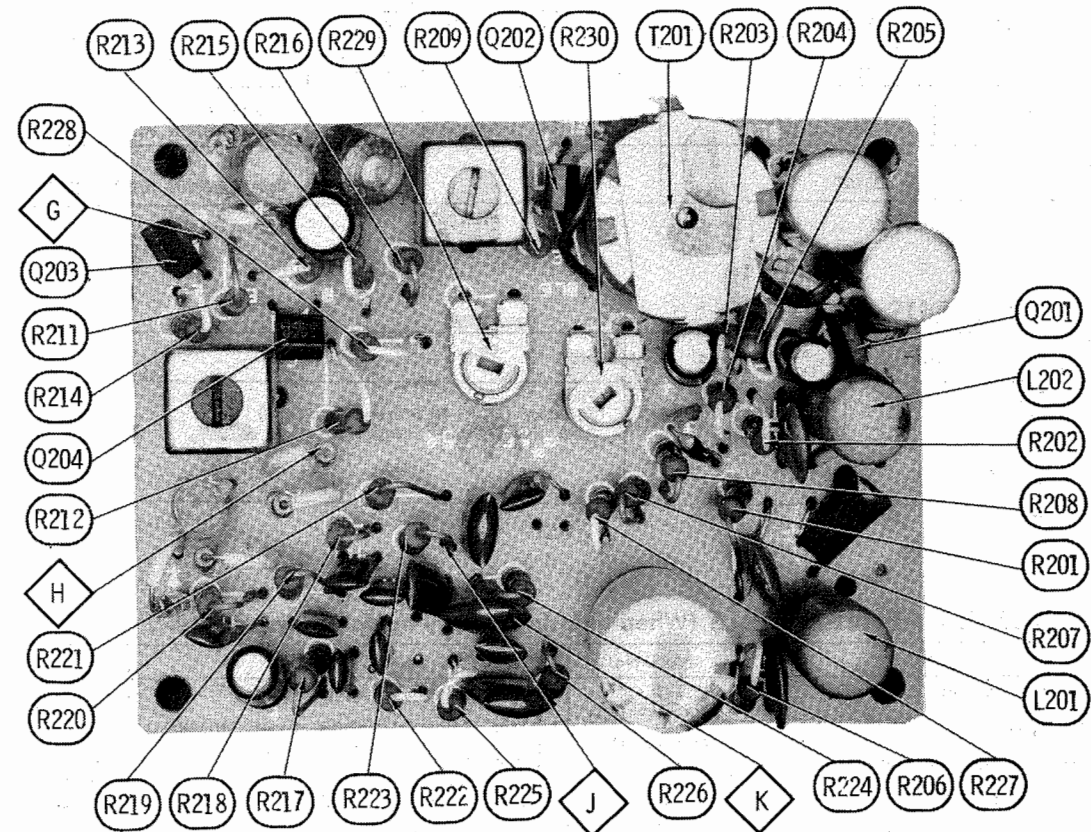
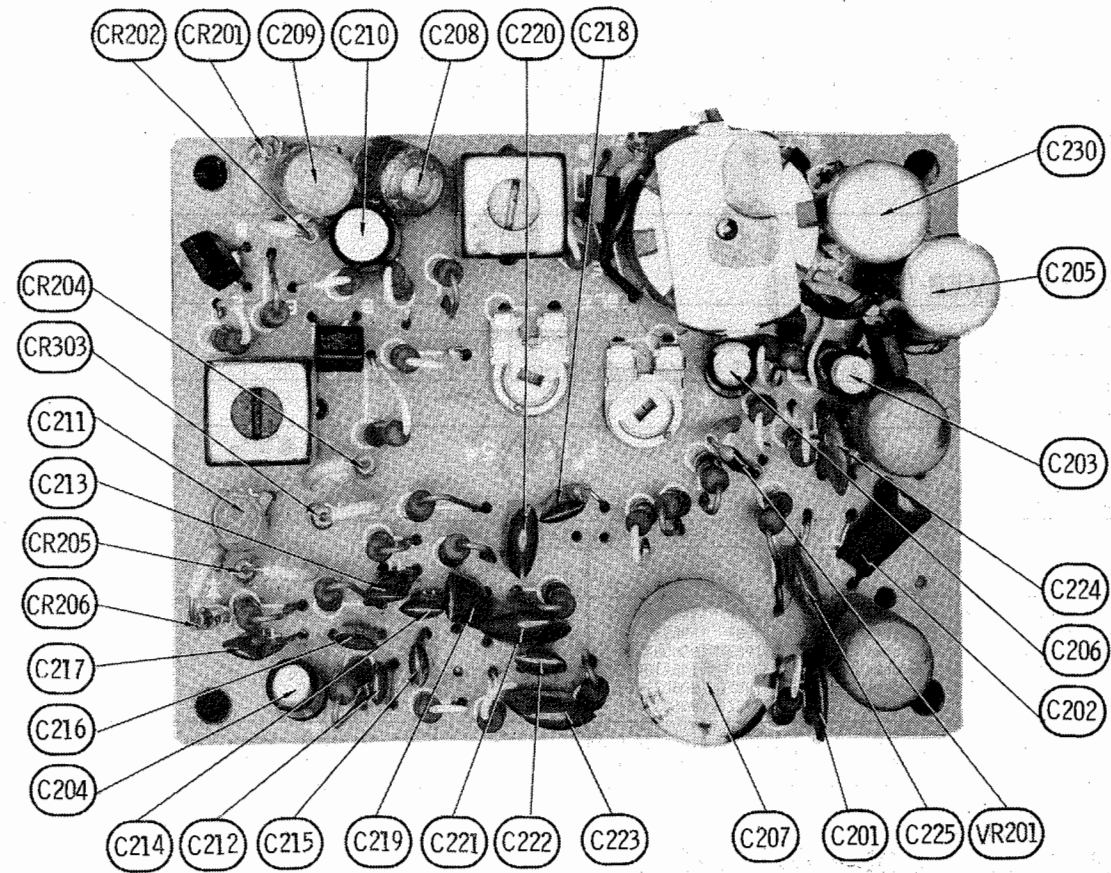
FM STEREO THRESHOLD ADJUST (R229)

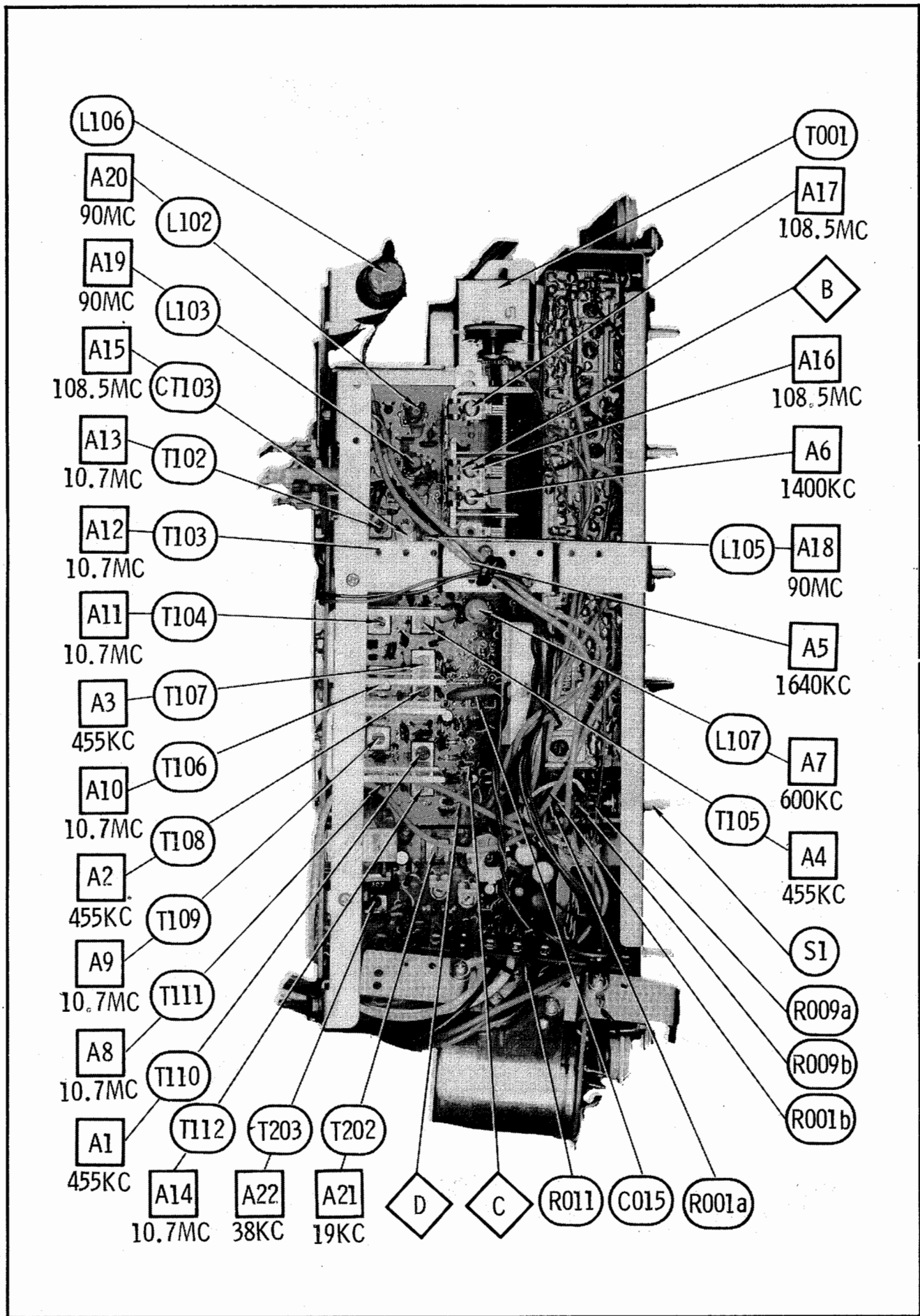
Tune across dial noting operation of stereo indicator lamp. Adjust R229 until lamp glows on weak stereo stations but does not glow on noise pulses.

FM IF GAIN ADJUST (RV101)

Adjust RV101 for maximum desired sensitivity without overload distortion.







PARTS LIST AND DESCRIPTION (CONTINUED)

(When ordering parts, state Model, Part Number, and Description.)

TRANSFORMER (Power)

ITEM No.	RATING			REPLACEMENT DATA				NOTES
	PRI.	SEC. 1	SEC. 2	MFR. PART No.	STANCOR PART No.	THORDARSON PART No.	TRIAD PART No.	
T001	117VAC @ .08AAC	33VAC @ .7ADC Max.	12VAC @ .3AAC	167274				

TRANSFORMER (Driver)

ITEM No.	TURNS RATIO			REPLACEMENT DATA				NOTES
	PRI.	SEC. 1	SEC. 2	MFR. PART No.	STANCOR PART No.	THORDARSON PART No.	TRIAD Part No.	
T301a	2	1	1	123810				
T301b	2	1	1	123810				

SPEAKER

ITEM No.	TYPE	REPLACEMENT DATA		NOTES
		MFR. PART No.	QUAM PART No.	
SP1	8" x 12" PM, 8.5 ohms	130407 (1464184-3)		Model VPT26W
SP2	3-1/2" PM, 20 ohms	111987 (906037-6)		
SP3	3-1/2" PM, 20 ohms	111987 (906037-6)		
SP4	8" x 12" PM, 8.5 ohms	130407 (1464184-3)		
SP5	3-1/2" PM, 20 ohms	111987 (906037-6)		Models VQT10W, VQT11L, VQT12S, VQT18W, VQT19L, VQT20W, VQT21L, VQT22S.
SP6	3-1/2" PM, 20 ohms	111987 (906037-6)		
	6" x 9" PM, 8 ohms	134649 (1464156-510)		
	3-1/2" PM, 20 ohms	111987 (906037-6)		

PHONO CARTRIDGE & NEEDLES

ITEM No.	REPLACEMENT DATA						NOTES
	MFR. PART No.		ASTATIC PART No.		ELECTRO-VOICE PART No.		
	CARTRIDGE	NEEDLE	CARTRIDGE	NEEDLE	CARTRIDGE	NEEDLE	
M1 M2	131779					2918DS	Model VPT26W
		131780		N576SD		2918DS	
	133706	133625					Models VQT10W,VQT11L,VQT12S, VQT18W,VQT19L.
	131779	133707					Models VQT20W,VQT21L,VQT22S

MISCELLANEOUS

ITEM No.	PART NAME	PART No.	NOTES
M3	Motor	132340	Phono Selector (AM-FM-FM Stereo-Phono-Tape) Power (On-Off) (On Changer)
S1	Switch	167276	
S4	Switch	131581	
	Idler Wheel	132211	
	Hold Down Arm	131606	
	Tone Arm	131728	

CABINETS & CABINET PARTS (When ordering specify model, chassis & color)

ITEM	PART No.	ITEM	PART No.
Rear Cover, Model VPT26W	132193 (1435255-1)	Knob, Selector, Control, Model VPT26W	132197 (1462841-10)
Rear Cover, Models VQT10W/11L/12S	134653 (1463545-1)	Knob, Selector, Control, Models VQT10W/11L/12S/20W/21L/22S	134648 (1435355-514)
Rear Cover, Models VQT18W/19L	135538 (1463544-1)	Knob, Selector, Control, Models VQT18W/19L	136007 (1436623-514)
Rear Cover, Model VQT20W	134650 (1435242-2)	Knob, Tuning, All Models	132196 (1462879-2)
Rear Cover, Models VQT21L/22S	134651 (1435242-1)	Pointer, Dial, All Models	167273
		Dial, Tuning, All Models	167270

PARTS LIST AND DESCRIPTION (CONTINUED)

(When ordering parts, state Model, Part Number, and Description.)

CONTROLS (All wattages 1/2 watt, or less, unless listed)

ITEM No.	FUNCTION	RESIST-ANCE	REPLACEMENT DATA				
			MFGR. PART No.	CENTRALAB PART No.	CLAROSTAT PART No.	CTS-IRC PART No.	MALLORY PART No.
R015a b	Treble, Right Treble, Left	250K 250K	167281	F2-250K (1), R2-250K SF012,CPL-2	NP-250K-Z (1), NR-250K-Z, UP-B-400,DC-2	B13-130,B13-130, SK1 (1),QCM or [BU1 (1),CF23, CR18,SS1, SS7A,DC1]* B13-128,B13-128, SK1 (1),QCM or [BU1 (1),CF52, CR63,SS1, SS7A,DC1]* B18-133XX, B18-133XX, SK7 (1),QCM or [BU1 (1),CF109TT, CR74TT,SS17, SS7A, K]*	P254A,3014 (1), RU254A,CS3500
R016a b	Bass, Right Bass, Left	100K 100K	167282	F2-100K (1), R2-100, SF012,CPL-2			P15A,3014 (1), RU15A,CS3500
R017a b	Loudness, Right Loudness, Left/ Switch	500K Tap @ 175K & 300K 500K Tap @ 175K & 300K	167283	F56-500K (1), R56-500K, SPU304,KR-8FR			
R018	Balance/AFC Switch	250K Tap @ 125K 10K	166069	F11-250K (1), SPU304,KR-8FR			P254T1253,3014 (1), FPP-1,SL250
R229 R230 RV101	Threshold Separation FM IF Gain	500 1000	167286 165304	TSV-1K (2) or T-1000 (2)		X201R102B (2)	MTC13L1 (2)

- (1) Enlarge mounting hole.
(2) Cut off one of the end terminals and bend to fit "PC" board.

* "SNAPTROL"

RESISTORS (Power and Special)

ITEM No.	RATING	REPLACEMENT DATA	
		WORKMAN PART No.	MFGR. PART No.
R051	220 2W,Film	3G-220	166988
R308a	10 1/4W	CD-10	
R308b	10 1/4W	CD-10	
R314a	2.2 1/4W		
R314b	2.2 1/4W		
R315a	2 1/4W		
R315b	2 1/4W		
R316a	2.2 1/4W		
R316b	2.2 1/4W		
R317a	2 1/4W		

ITEM No.	RATING	REPLACEMENT DATA	
		WORKMAN PART No.	MFGR. PART No.
R317b	2 1/4W		
TH301a	Thermistor (12.5 Cold)	FR12.9	127186 (13027)
TH301b	Thermistor (12.5 Cold)	FR12.9	127186 (13027)
TH302a	Thermistor (12.5 Cold)	FR12.9	127186 (13027)
TH302b	Thermistor (12.5 Cold)	FR12.9	127186 (13027)

COILS (RF-IF)

ITEM No.	USE	REPLACEMENT DATA			
		PART No.	MEISSNER PART No.	MILLER PART No.	WORKMAN PART No.
L101	RF Choke (20 Turns)	167035			
L102	FM RF	127174			
L103	FM RF	127173			
L104	RF Choke (20 Turns)	167035			
L105	FM Oscillator	125454			
L106	Loopstick	167280			
L107	AM Oscillator	166987			
L108	RF Choke (47uh)	165744	19-7047	7787 2069 72F475AP	T954
L109	RF Choke (47uh)	165744	19-7047	72F475AP	T954
L110	RF Choke (47uh)	165744	19-7047	72F475AP	T954
L201	67KC Trap	167014			
L202	72KC Trap	167014			
T101	FM Balun	125404			
T102	FM Input IF	127190	16-9031	2071	
T103	FM Interstage IF	123283	16-9031	2071	
T104	FM Interstage IF	125394	16-9031	2071	
T105	AM Input IF	127192	16-9026	8517	
T106	FM Interstage IF	125394	16-9032	2072	
T107	AM Interstage IF	125465	16-9028	8518	
T108	AM Interstage IF	123281	16-9027 (1)	2067 (1)	
T109	FM Interstage IF	125394	16-9032	2072	
T110	AM Output IF	165659	16-9028	8518	
T111	Ratio Detector (Primary)	165657			
T112	Ratio Detector (Secondary)	165656			
T201	19KC Input	127191			
T202	19KC Doubler	127188			
T203	38KC Output	127187			

- (1) Clip Pins 1 and 4.

PARTS LIST AND DESCRIPTION

(When ordering parts, state Model, Part Number, and Description.)

WIRING DATA

General-use Unshielded Hook-up Wire	Use BELDEN No. 8530 (Solid) Available in 12 Colors 8524 (Stranded) Available in 12 Colors
Power Cord	Use BELDEN No. 17106 (Plastic) or 17126 (Rubber) - 6 Feet 17109 (Plastic) or 17129 (Rubber) - 9 Feet
Low-loss Shielded Lead (Interconnecting)	Use BELDEN No. 8401 or 8421
Phono Pick-up Arm Cable	Use BELDEN No. 8419 (Three Conductor-Shielded)

TRANSISTORS

ITEM No.	TYPE No.	FUNCTION	REPLACEMENT DATA					
			MFGR. PART No.	GENERAL ELECTRIC PART No.	INTERNATIONAL RECTIFIER PART No.	MOTOROLA PART No.	RCA PART No.	SYLVANIA PART No.
Q001a	2SC458B	AF Amp	127355	GE-18	TR-24	HEP738	SK3020	ECG 123A
Q001b	2SC458B	AF Amp	127355	GE-18	TR-24	HEP738	SK3020	ECG 123A
Q101	2SC535B	FM RF Amp	125995	GE-20	TR-21	HEP56	SK3018	ECG 107
Q102	2SC535A	FM Mixer	129392	GE-20	TR-21	HEP56	SK3018	ECG 107
Q103	2SC535A	FM Oscillator	129392	GE-20	TR-21	HEP56	SK3018	ECG 107
Q104	2SC460B	1st FM IF Amp	129394	GE-20	TR-21	HEP53	SK3018	ECG 107
Q105	2SC460B	AM Converter	129394	GE-20	TR-21	HEP53	SK3018	ECG 107
Q106	2SC460B	1st AM-2nd FM IF Amp	129394	GE-20	TR-21	HEP53	SK3018	ECG 107
Q107	2SC460B	2nd AM-3rd FM IF Amp	129394	GE-20	TR-21	HEP53	SK3018	ECG 107
Q108	2SC460C	4th FM IF Amp	125390	GE-20	TR-21	HEP53	SK3018	ECG 107
Q201	2SC458B	Mono Preamp- MPX Input Amp	125389	GE-17	TR-24	HEP738	SK3020	ECG 123A
Q202	2SC458A	19KC Amp	125389	GE-17	TR-24	HEP738	SK3020	ECG 123A
Q203	2SC458B	38KC Amp	125389	GE-17	TR-24	HEP738	SK3020	ECG 123A
Q204	2SC458C	Stereo Switch	125389	GE-18	TR-25	HEP738	SK3020	ECG 123A
Q301a	2SC458C	AF Amp	127355	GE-18	TR-24	HEP738	SK3020	ECG 123A
Q301b	2SC458C	AF Amp	127355	GE-18	TR-24	HEP738	SK3020	ECG 123A
Q302a	2SC458B	AF Amp	127355	GE-18	TR-24	HEP738	SK3020	ECG 123A
Q302b	2SC458B	AF Amp	127355	GE-18	TR-24	HEP738	SK3020	ECG 123A
Q303a	2SC458B	Driver	125389	GE-18	TR-25	HEP738	SK3020	ECG 123A
Q303b	2SC458B	Driver	125389	GE-18	TR-25	HEP738	SK3020	ECG 123A
Q304a	2SB367B	Output	167285	GE-30	IRTR-50	HEP642	SK3052	ECG 131
Q304b	2SB367B	Output	167285	GE-30	IRTR-50	HEP642	SK3052	ECG 131
Q305a	2SB367B	Output	167285	GE-30	IRTR-50	HEP642	SK3052	ECG 131
Q305b	2SB367B	Output	167285	GE-30	IRTR-50	HEP642	SK3052	ECG 131

POWER RECTIFIERS & SIGNAL DIODES

ITEM No.	MFGR. PART OR TYPE No.	REPLACEMENT DATA				NOTES
		GENERAL ELECTRIC PART No.	INTERNATIONAL RECTIFIER PART No.	RCA PART No.	SYLVANIA PART No.	
CR051	166593 (V06C)	GE-504A	8D4 or 5A4D	SK3030 or SK3031	ECG 116 or ECG 117	Zener Varactor
CR052	166593 (V06C)	GE-504A	8D4 or 5A4D	SK3030 or SK3031	ECG 116 or ECG 117	
CR053	166985 (AW01-13)	GEZD-12	Z1112	SK3093 SK3088	ECG 143 ECG 109	
CR101	117730 (1N60)	1N60	1N60			
CR103	123276 (1S85WT)	GE-90	D201			(6) Matched Pair
CR104	117730 (1N60)	1N60	1N60	SK3088	ECG 109	
CR105	117730 (1N60)	1N60	1N60	SK3088	ECG 109	
CR106	59395 (1N34A)	1N34AS	1N34A	SK3087	ECG 109	
CR107	117730 (1N60P)	1N60	1N60	SK3088		
CR108	117730 (1N60P)	1N60	1N60	SK3088	ECG 110 (6)	
CR109	117730 (1N60P)	1N60	1N60	SK3088	ECG 109	
CR201	59395 (1N34A)	1N34AS	1N34A	SK3087	ECG 110 (6)	
CR202	59395 (1N34A)	1N34AS	1N34A	SK3087		
CR204	117730 (1N60)	1N60	1N60	SK3088	ECG 110 (6)	
CR205	117730 (1N60)	1N60	1N60	SK3088		ECG 110 (6)
CR206	117730 (1N60)	1N60	1N60	SK3088		
CR303	117730 (1N60)	1N60	1N60	SK3088		
VR101	125458 (HV23)	GE-300	D200		ECG 177	
VR102	125458 (HV23)	GE-300	D200		ECG 177	
VR201	125458 (HV23)	GE-300	D200		ECG 177	

PARTS LIST AND DESCRIPTION (CONTINUED)

(When ordering parts, state Model, Part Number, and Description.)

ELECTROLYTIC CAPACITORS

ITEM No.	RATING	REPLACEMENT DATA						
		RCA PART No.	AEROVOX PART No.	CENTRALAB PART No.	CORNELL-DUBILIER PART No.	GENERAL ELECTRIC PART No.	MALLORY PART No.	SPRAGUE PART No.
C004a	3.3 25V	126917	MCD-40	EP30-5	WBR5-50	MT1-3	MTV3CB50	TE-1302
C004b	3.3 16V		MCD-40	EP30-5	WBR5-50	MT1-3	MTV3CB50	TE-1302
C009	3.3 25V		MCD-180	EP15-100	WBR100-16	MT1-19	MTV100CD15	TE-1162
C016a	3.3 16V		MCD-70	EP15-10	WBR10-25	MT1-5	MTV10CB50	TE-1155
C016b	10 16V	129298	MCD-70	EP15-10	WBR10-25	MT1-5	MTV10CB50	TE-1155
C030	2 NP 25V	129298 125560 (1444818-2)	PRS7300		BRNP2-50	NPQT-1	TCN502	TVAN-1301.1
C031	2 NP 25V	125560 (1444818-2)	PRS7300		BRNP2-50	NPQT-1	TCN502	TVAN-1301.1
C053	2200 35V	067284	MCD-130	EP15-50	AA0145A	XC1-28	FP070A	PCL-1271
C054	47 16V		MCD-130	EP15-50	WBR50-25	MT1-16	MTV50CB15	TE-1160
C142	3.3 25V	126917	MCD-40	EP30-5	WBR5-50	MT1-3	MTV3CB50	TE-1302
C152	3.3 16V		MCD-40	EP30-5	WBR5-50	MT1-3	MTV3CB50	TE-1302
C157	3.3 25V		PRS1290	EA30-500	WBR500-25	QT1-30A	TC2505C	TL-1217
C203	220 10V		MCD-40	EP30-5	WBR5-50	MT1-3	MTV3CB50	TE-1302
C204	3.3 16V	126917	MCD-70	EP15-10	WBR10-25	MT1-5	MTV10CB50	TE-1155
C206	3.3 25V	165722	MCD-40	EP30-5	WBR5-50	MT1-3	MTV3CB50	TE-1302
C207	3.3 16V	126917	PRS1220	EA15-500	WBR500-16	QT1-30A	MTV500DN15	TL-1166
C210	47 6.3V	127474	MCD-130	EP6-50	WBR50-25	MT1-15	MTV50CB15	TE-1133
C304a	220 6.3V	127475	MCD-210	EA6-250	WBR250-16	MT1-23	MTV200DB10	TE-1104
C304b	220 6.3V	127475	MCD-210	EA6-250	WBR250-16	MT1-23	MTV200DB10	TE-1104
C308a	470 16V	127474	PRS1220	EA15-500	WBR500-16	QT1-30A	MTV500DN15	TL-1166
C308b	470 16V	127474	PRS1220	EA15-500	WBR500-16	QT1-30A	MTV500DN15	TL-1166
C309	47 25V	126173	MCD-140	EP30-50	WBR50-25	MT1-16.5	MTV50CD25	TE-1209
C310	100 25V	165441	PRS1290	EA30-500	WBR500-25	QT1-30A	TC2505C	TL-1217

CAPACITORS

ITEM No.	RATING	REMARKS	REPLACEMENT DATA					
			AEROVOX PART No.	ARCO/ELMENC0 PART No.	CENTRALAB PART No.	CORNELL-DUBILIER PART No.	MALLORY PART No.	SPRAGUE PART No.
C001a	220 50V 10%		GPD X5F221K	CCD-221	DD-221	GP220	GP322	10TS-T22
C001b	220 50V 10%		GPD X5F221K	CCD-221	DD-221	GP220	GP322	10TS-T22
C002a	.022 50V		DBE6S22	1DP-1-223		DPMS6S22	PVC1122	225P22391WD3
C002b	.022 50V		DBE6S22	1DP-1-223		DPMS6S22	PVC1122	225P22391WD3
C003a	270 50V 5%		GPD X5F271K	CCD-270	DD-271	GP270	GP327	10TS-T27
C003b	270 50V 5%		GPD X5F271K	CCD-270	DD-271	GP270	GP327	10TS-T27
C011a	.001 50V		DBE6D1	6DP-1-102	CPR-1000J	DPMS6D1	PVC621	225P10291WD3
C011b	.001 50V		DBE6D1	6DP-1-102	CPR-1000J	DPMS6D1	PVC621	225P10291WD3
C012a	.0068 50V		DBE6D68	6DP-1-692		DPMS6D68	PVC6268	6PS-D68
C012b	.0068 50V		DBE6D68	6DP-1-692		DPMS6D68	PVC6268	6PS-D68
C013a	.047 50V		V1612S47	1DP-2-473		DPMS6S47	PVC1147	225P47391WD3
C013b	.047 50V		V1612S47	1DP-2-473		DPMS6S47	PVC1147	225P47391WD3
C014a	.022 50V		DBE6S22	1DP-1-223		DPMS6S22	PVC1122	225P22391WD3
C014b	.022 50V		DBE6S22	1DP-1-223		DPMS6S22	PVC1122	225P22391WD3
C015	.0047 1.4KV			3CCD-502	DD30-472			30GA-D47
C017a	.001 50V		DBE6D1	6DP-1-102	CPR-1000J	DPMS6D1	PVC621	225P10291WD3
C017b	.001 50V		DBE6D1	6DP-1-102	CPR-1000J	DPMS6D1	PVC621	225P10291WD3
C032	820 10%		GPD X5F821K	CCD-821	DD-821	GP820		10TS-T82
C033	.0056 50V		GPD X5R562K	CCD-562	DD-562			10TS-D56
C034	.0056 50V		GPD X5R562K	CCD-562	DD-562			10TS-D56
C035	.01 1.4KV						2HV110	30GA-S10
C051	.022 50V		DBE6S22	1DP-1-223		DPMS6S22	PVC1122	225P22391WD3
C052	.022 50V		DBE6S22	1DP-1-223		DPMS6S22	PVC1122	225P22391WD3
C055	.022 50V		DBE6S22	1DP-1-223		DPMS6S22	PVC1122	225P22391WD3
C101	15 50V 10%			CCD-150	DTZ-15	NP015	CN0415	10TCC-Q15
C102	5pf 50V 10%					NP05		10TCC-V50
C103	18 50V 10%			CCD-180	TCZ-18	NP018	CN0418	10TCC-Q18
C104	3pf 50V +.5pf							
C105	.01 50V		GPD X5S103K	CCD-103	DD-103	GP10000	JF110	10TS-S10
C106	.01 50V		GPD X5S103K	CCD-103	DD-103	GP10000	JF110	10TS-S10
C107	18 50V 10%			CCD-180	TCZ-18	NP018	CN0418	10TCC-Q18
C108	2pf 50V +.5pf		GPD C0J2R2K		DTZ-2R2	NP02P2	CN0522	10TCC-V22
C109	1pf 50V +.5pf		GPD C0J1R0D		TCZ-1		CN0510	10TCC-V10
C110	.001 50V		GPD X5F102K	CCD-102	DD-102	GP1000	GP210	10TS-D10
C111	.01 50V		GPD X5S103K	CCD-103	DD-103	GP10000	JF110	10TS-S10
C112	.02 50V		GPD Z5U203P	CCD-203	DD-203		GP120	10TS-S20

PARTS LIST AND DESCRIPTION (CONTINUED)

(When ordering parts, state Model, Part Number, and Description.)

CAPACITORS (cont)

ITEM No.	RATING	REMARKS	REPLACEMENT DATA					
			AEROVOX PART No.	ARCO/ELMENC0 PART No.	CENTRALAB PART No.	CORNELL-DUBILIER PART No.	MALLORY PART No.	SPRAGUE PART No.
C113	.02	50V	GPD Z5U203P	CCD-203	DD-203		GP120	10TS-S20
C114	47	50V 10%		CCTO-470	DTZ-47	NP047	CN0447	10TCC-Q47
C115	10pf NPO	50V \pm .5pf		CCTO-100	DTZ-10	NP010	CN0410	10TCC-Q10
C116	.001	50V	GPD X5F102K	CCD-102	DD-102	GP1000	GP210	10TS-D10
C117	8pf NPO	50V \pm .5pf	GPD COH8R2K			NP08P2		10TCC-V82
C118	6pf	50V \pm .5pf	GPD COH6R8K		DTZ-6R8	NP06P8	CN0568	10TCC-V68
C119	.04	50V			DD-403		GP140	
C120	3pf	50V \pm .5pf						10TCC-V30
C121	.01	50V	GPD X5S103K	CCD-103	DD-103	GP10000	JF110	10TS-S10
C122	6pf	50V \pm .5pf	GPD COH6R8K		DTZ-6R8	NP06P8	CN0568	10TCC-V68
C123	.01	50V	GPD X5S103K	CCD-103	DD-103	GP10000	JF110	10TS-S10
C124	.02	50V	GPD Z5U203P	CCD-203	DD-203		GP120	10TS-S20
C125	3pf	50V \pm .5pf						10TCC-V30
C126	100	50V 10%	GPD X5F101K	CCD-101	DD-101	GP100	GP310	10TS-T10
C127	.0047	50V	DBE6D47	6DP-1-472		DMS6D47	PVC6247	6PS-D47
C128	.01	50V	V1612S1	1DP-1-103	CPR-10000J	DPMS6S1	PVC211	225P10391WD3
C129	100	50V 10%	GPD X5F101K	CCD-101	DD-101	GP100	GP310	10TS-T10
C130	4pf	50V \pm .5pf				NP03P9		10TCC-V39
C131	.0015	50V 5%		DM-19-152	CPR-1500J		SX215	MS-215
C132	.022	50V	DBE6S22	1DP-1-223		DPMS6S22	PVC1122	225P22391WD3
C133	.0047	50V	DBE6D47	6DP-1-472		DMS6D47	PVC6247	6PS-D47
C134	.001	50V	DBE6D1	6DP-1-102	CPR-1000J	DPMS6D1	PVC621	225P10291WD3
C135	3pf	50V \pm .5pf						10TCC-V30
C136	.022	50V	DBE6S22	1DP-1-223		DPMS6S22	PVC1122	225P22391WD3
C137	7pf	50V	GPD COH6R8K	DTZ-6R8		NP06P8	CN0568	10TCC-V68
C138	3pf	50V \pm .5pf						10TCC-V30
C139	.022	50V	DBE6S22	1DP-1-223		DPMS6S22	PVC1122	225P22391WD3
C140	.022	50V	DBE6S22	1DP-1-223		DPMS6S22	PVC1122	225P22391WD3
C141	.022	50V	DBE6S22	1DP-1-223		DPMS6S22	PVC1122	225P22391WD3
C143	3pf	50V \pm .5pf						10TCC-V30
C144	.01	50V	GPD X5S103K	CCD-103	DD-103	GP10000	JF110	10TS-S10
C145	.01	50V	GPD X5S103K	CCD-103	DD-103	GP10000	JF110	10TS-S10
C146	24	50V 5%			DTZ-25		CN0425	10TCC-Q25
C147	.0047	50V	DBE6D47	6DP-1-472		DMS6D47	PVC6247	6PS-D47
C148	.0047	50V	DBE6D47	6DP-1-472		DMS6D47	PVC6247	6PS-D47
C150	100	50V 10%	GPD X5F101K	CCD-101	DD-101	GP100	GP310	10TS-T10
C151	100	50V 10%	GPD X5F101K	CCD-101	DD-101	GP100	GP310	10TS-T10
C153	100	50V 10%	GPD X5F101K	CCD-101	DD-101	GP100	GP310	10TS-T10
C154	100	50V 10%	GPD X5F101K	CCD-101	DD-101	GP100	GP310	10TS-T10
C155	.1	50V	DBE2P1	1DP-2-104		DPMS2P1	PVC101	225P10491WD3
C156	.022	50V	DBE6S22	1DP-1-223		DPMS6S22	PVC1122	225P22391WD3
C158	.0068	50V	DBE6D68	6DP-1-692		DPMS6D68	PVC6268	6PS-D68
C159	.022	50V	DBE6S22	1DP-1-223		DPMS6S22	PVC1122	225P22391WD3
C201	270	50V 5%	GPD X5F271K	CCD-270	DD-271	GP270	GP327	10TS-T27
C202	.001	50V	DBE6D1	6DP-1-102	CPR-1000J	DPMS6D1	PVC621	225P10291WD3
C205	.0047	50V	DBE6D47	6DP-1-472	CPR-4700J	DMS6D47	PVC6247	6PS-D47
C208	.0047	50V 5%		DM-19-472	CPR-4700J		SX247	MS-247
C209	.0047	50V 5%		DM-19-472	CPR-1500J		SX215	MS-215
C211	.0015	50V 5%		DM-19-152				
C212	.001	50V	DBE6D1	6DP-1-102	CPR-1000J	DPMS6D1	PVC621	225P10291WD3
C213	.001	50V	DBE6D1	6DP-1-102	CPR-1000J	DPMS6D1	PVC621	225P10291WD3
C214	.001	50V	DBE6D1	6DP-1-102	CPR-1000J	DPMS6D1	PVC621	225P10291WD3
C215	.001	50V	DBE6D1	6DP-1-102	CPR-1000J	DPMS6D1	PVC621	225P10291WD3
C216	.001	50V	DBE6D1	6DP-1-102	CPR-1000J	DPMS6D1	PVC621	225P10291WD3
C217	.001	50V	DBE6D1	6DP-1-102	CPR-1000J	DPMS6D1	PVC621	225P10291WD3
C218	.0047	50V	DBE6D47	6DP-1-472		DMS6D47	PVC6247	6PS-D47
C219	.0047	50V	DBE6D47	6DP-1-472		DMS6D47	PVC6247	6PS-D47
C220	.033	50V	DBE6S33	4DP-2-333		DPMS6S33	PVC6133	4PS-S33
C221	.033	50V	DBE6S33	4DP-2-333		DPMS6S33	PVC6133	4PS-S33
C222	.0047	50V	DBE6D47	6DP-1-472		DMS6D47	PVC6247	6PS-D47
C223	.033	50V	DBE6S33	4DP-2-333		DPMS6S33	PVC6133	4PS-S33
C224	330	50V 5%	GPD X5F331K	CCD-331	DD-331	GP330	GP333	10TS-T33
C225	330	50V 5%	GPD X5F331K	CCD-331	DD-331	GP330	GP333	10TS-T33
C230	.0047	50V	DBE6D47	6DP-1-472		DMS6D47	PVC6247	6PS-D47
C301a	.022	50V	DBE6S22	1DP-1-223		DPMS6S22	PVC1122	225P22391WD3
C301b	.022	50V	DBE6S22	1DP-1-223		DPMS6S22	PVC1122	225P22391WD3
C302a	.033	50V	DBE6S33	4DP-2-333		DPMS6S33	PVC6133	4PS-S33
C302b	.033	50V	DBE6S33	4DP-2-333		DPMS6S33	PVC6133	4PS-S33
C303a	270	50V 10%	GPD X5F271K	CCD-270	DD-271	GP270	GP327	10TS-T27
C303b	270	50V 10%	GPD X5F271K	CCD-270	DD-271	GP270	GP327	10TS-T27
C305a	.0047	50V	DBE6D47	6DP-1-472		DMS6D47	PVC6247	6PS-D47
C305b	.0047	50V	DBE6D47	6DP-1-472		DMS6D47	PVC6247	6PS-D47
C306a	.0047	50V	DBE6D47	6DP-1-472		DMS6D47	PVC6247	6PS-D47
C306b	.0047	50V	DBE6D47	6DP-1-472		DMS6D47	PVC6247	6PS-D47
C307a	.0022	50V	DBE6D22	6DP-1-222		DPMS6D22	PVC6222	6PS-D22
C307b	.0022	50V	DBE6D22	6DP-1-222		DPMS6D22	PVC6222	6PS-D22
CT103	Trimmer							
CV101	Tuning Gang	#125405						