

**CABINET-REAR VIEW**

## HORIZONTAL SWEEP CIRCUIT ADJUSTMENTS

Tune in a TV station and set all controls for normal operation. Connect a clip lead from point Ⓢ (pin 9, grid of Sync Separator, V4B) to ground. Connect another clip lead across Horizontal Stabilizer Coil, L17. Adjust the Horizontal Hold Control for MINIMUM sideways drift. Remove clip lead from Stabilizer Coil, L17. Adjust Horizontal Stabilizer Slug, B1, for MINIMUM sideways drift. Remove clip lead from point Ⓢ.

## DISASSEMBLY INSTRUCTIONS

### TV CHASSIS REMOVAL

1. Remove 7 screws holding back cover and remove back cover. On some models it may be necessary to disconnect antenna leads. Remove all knobs.
2. Disconnect yoke plug, high voltage anode lead, picture tube socket, and speaker leads.
3. Remove 5 screws holding chassis, tuner, and controls. Lift out chassis and tuner.

NOTE: Most components may be serviced without removing chassis.

### PICTURE TUBE REMOVAL

1. Follow "Chassis Removal" procedure. Lay set face down on a soft protective surface.
2. Remove 1 screw holding picture tube retainer wire, and lift out picture tube. Do not lift out by the neck of the tube.

SET 897 FOLDER 2

RCA VICTOR  
CHASSIS KCS164D/E

PHOTOFACT® Folder

with CIRCUITRACE™

RCA VICTOR  
CHASSIS KCS164D/E



MODEL AJ087W

### CAUTION

ONE SIDE OF AC LINE CONNECTED TO CHASSIS

TRADE NAME	RCA Victor	Models AJ087E, M, W ... Chassis KCS164E
		Models AJ091M, W ..... Chassis KCS164D
SUPPLIER	For current address, see Annual Index.	
TYPE SET	Television Receiver	
TUBES	VHF: Fourteen, UHF: One Transistor	
POWER SUPPLY	110-120 Volts AC, 60 Cycles	RATING 120 Watts, 1.3 Amps. @ 117 Volts AC
TUNING RANGE	Channels 2 thru 13 VHF, 14 thru 83 UHF, Video IF 45.75MC, Sound IF 41.25MC (Inter-carrier)	

## SERVICING IN THE FIELD

### SAFETY GLASS

The safety glass is an integral part of the picture tube.

### FUSE OR FUSE DEVICE

A 1½" length of #34 fuse wire is used for AC line protection. (See "Cabinet - Rear View" photo for location.)

A Circuit Breaker is used for low voltage power supply protection and may be reset by depressing the reset button.

### VHF OSCILLATOR ADJUSTMENT

The Fine Tuning mechanically engages oscillator slug for adjustment (one slug for each channel).

### AGC

No provision is made to vary the AGC on this receiver.

### HORIZONTAL OSCILLATOR FIELD ADJUSTMENT

Coarse adjustment of the horizontal hold is accomplished by the proper setting of the Horizontal Stabilizer Coil. (See "Tube Placement Chart" for location.)

### WIDTH

The width may be varied by a Width Control. (See "Tube Placement Chart" for location.)

### FOCUS

No provision is made to vary the focus on this receiver.

### CENTERING

Centering is accomplished by 2 magnetic rings located on yoke rear cover.

**HOWARD W. SAMS & CO., INC.** Indianapolis, Indiana 46206



The listing of any available replacement part herein does not constitute in any case a recommendation, warranty or guaranty by Howard W. Sams & Co., Inc., as to the quality and suitability of such replacement part. The numbers of these parts have been compiled from information furnished to Howard W. Sams & Co., Inc., by the manufacturers of the particular type of replacement part listed. SA342 NA840

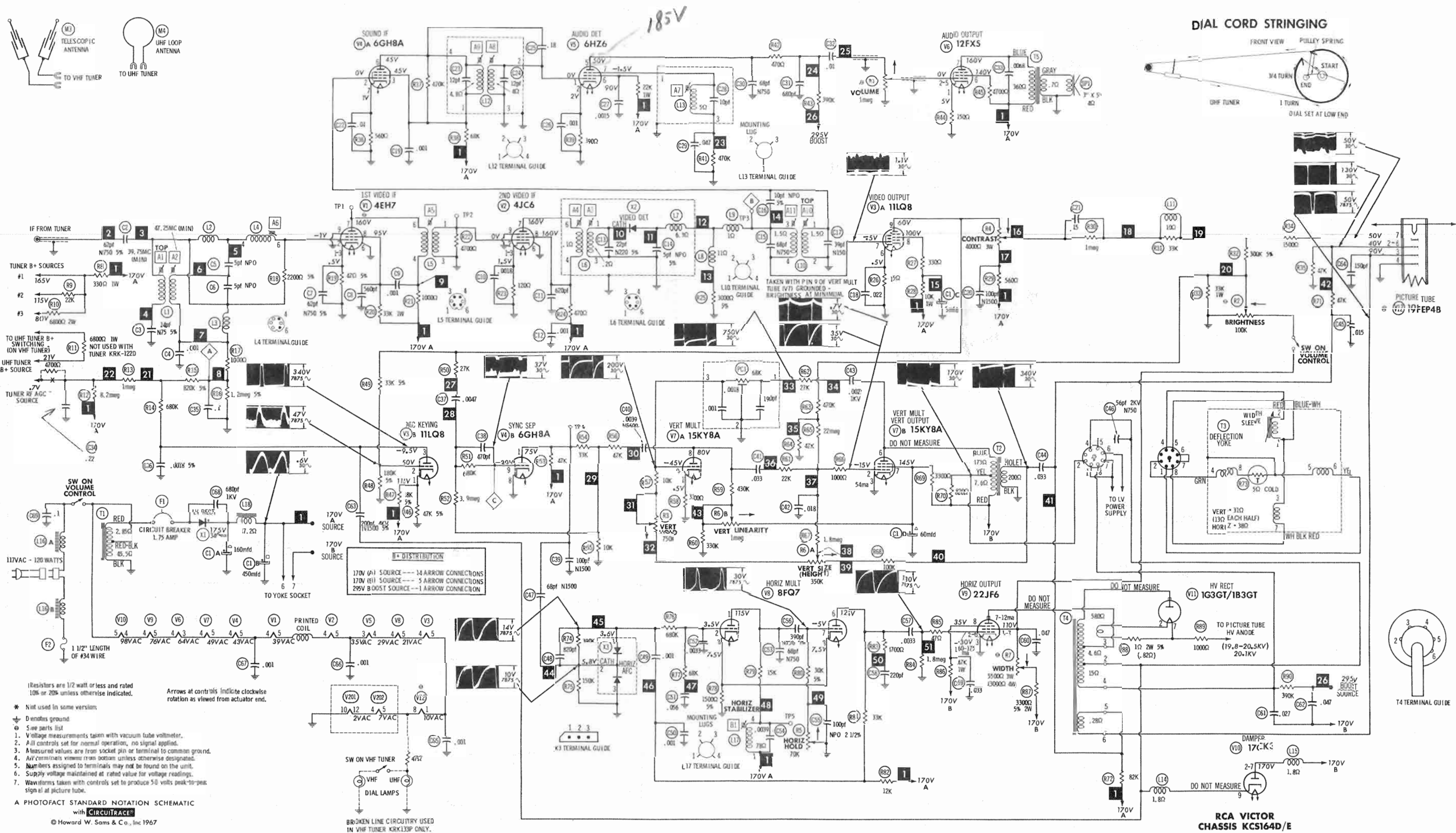
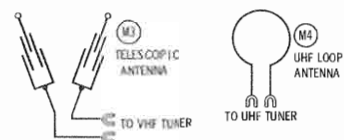
Reproduction or use, without express permission, of editorial or pictorial content, in any manner, is prohibited. No patent liability is assumed with respect to the use of the information contained herein. © 1967 Howard W. Sams & Co., Inc., Indianapolis, Indiana 46206. Printed in U. S. of America

DATE 7-67

SET 897 FOLDER 2

RCA VICTOR  
CHASSIS KCS164D/E

SET 897 FOLDER 2



(Resistors are 1/2 watt or less and rated 10% or 20% unless otherwise indicated.)

Arrows at controls indicate clockwise rotation as viewed from actuator end.

\* Not used in some versions.

⊕ Denotes ground.

⊙ See parts list.

1. Voltage measurements taken with vacuum tube voltmeter.

2. All controls set for normal operation, no signal applied.

3. Measured values are from socket pin or terminal to common ground.

4. All terminals shown from bottom unless otherwise designated.

5. Numbers assigned to terminals may not be found on the unit.

6. Supply voltage maintained at rated value for voltage readings.

7. Waveforms taken with controls set to produce 50 volts peak-to-peak signal at picture tube.

A PHOTOFACT STANDARD NOTATION SCHEMATIC with CIRCUITRACE

© Howard W. Sams & Co., Inc 1967

RCA VICTOR  
CHASSIS KCS164D/E

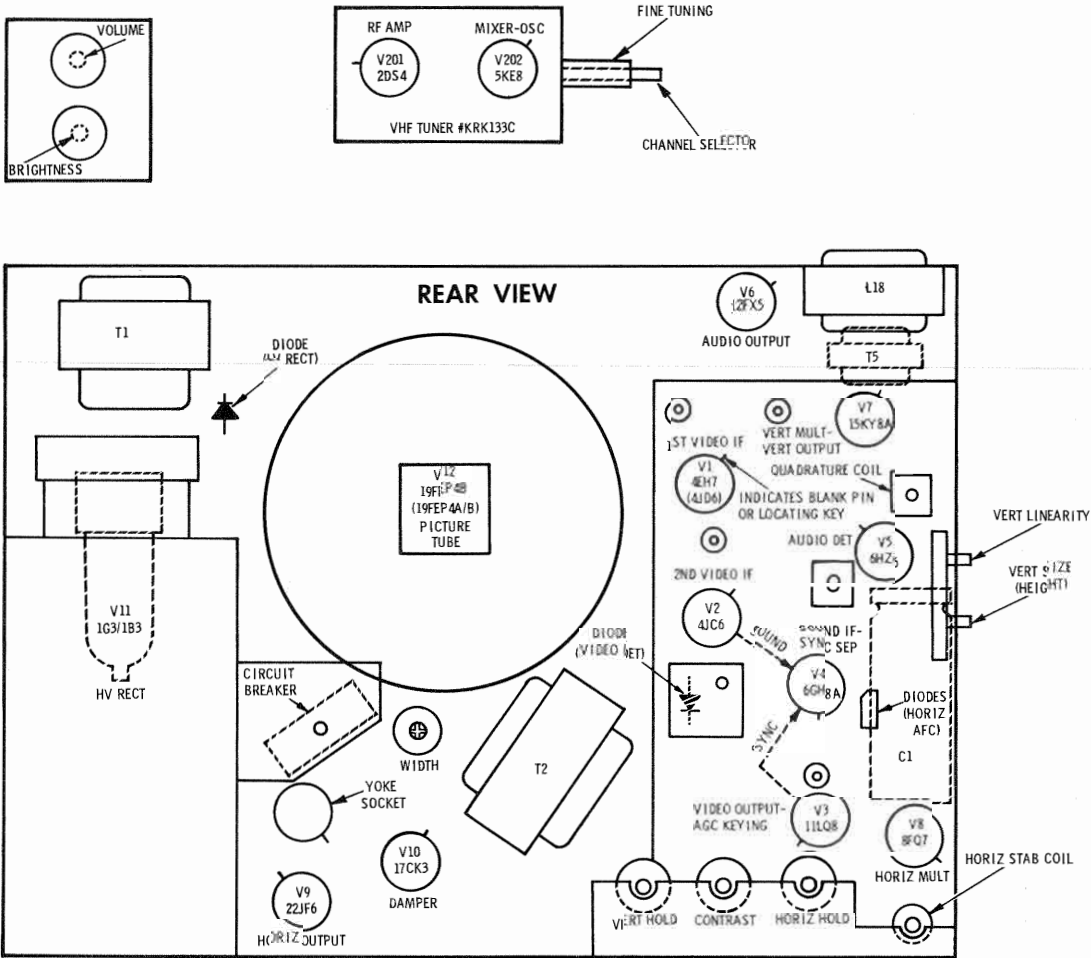
FOLDER 2

RESISTANCE MEASUREMENTS

ITEM	TUBE	Pin 1	Pin 2	Pin 3	Pin 4	Pin 5	Pin 6	Pin 7	Pin 8	Pin 9	Pin 10	Pin 11	Pin 12
V1	4EH7/4JD6	47Ω	1.2meg	47Ω	12Ω	11Ω	0Ω	1000Ω †	34K †	0Ω			
V2	4JC6	120Ω	0Ω	120Ω	11Ω	10Ω	0Ω	485Ω †	485Ω †	0Ω			
V3	11LQ8	14K †	42K #	2.6meg	7Ω	4Ω	15Ω	1400Ω •	10K †	4600Ω †			
V4	6GH8	24K †	1.5Ω	68K †	13Ω	12Ω	68K †	560Ω	0Ω	4.8meg			
V5	6HZ6	4Ω	390Ω	10Ω	9Ω	780K #	22K †	470K					
V6	12FX5	150Ω	50K	15Ω	16Ω	NC	4700Ω †	375Ω †					
V7	15KY8	3300Ω	2meg	0Ω	15Ω	13Ω	188Ω †	3300Ω †	470K †	650K			
V8	8FQ7	15K †	1.3meg	1500Ω	9Ω	7Ω	45K †	55K	1500Ω	NC			
V9	22JF6	5200Ω †	1.8meg	0Ω	18Ω	16Ω	NC	5200Ω †	47K †	NC			TOP CAP 7Ω #
V10	17CK3	NC	15Ω †	NC	18Ω	18Ω	NC	NC	NC	INF			
V11	1G3/1B3												TOP CAP 640Ω †
PINS 1 THRU 8 HAVE INFINITE RESISTANCE													
V12	19FEP4B	4Ω	40K	50K †	0Ω	TP	NC	260K	3Ω				
V201	2DS4	NC	7145Ω †	NC	2.3meg	NC	NC	NC	0Ω	NC	0Ω	NC	1Ω
V202	5KE8	7500Ω †	82K	23K †	1Ω	3Ω	1400Ω †	0Ω	1000Ω	7500Ω			

# THIS READING WILL VARY DEPENDING UPON THE CONDITION OF THE ELECTROLYTIC IN THE CIRCUIT.  
• READING DEPENDS ON POLARITY OF METER CONNECTIONS.  
† MEASURED FROM OUTPUT OF X1.  
NC NO CONNECTION  
TP TIE POINT  
# MEASURED FROM PIN 9 OF V10.

TUBE PLACEMENT CHART



RCA VICTOR  
CHASSIS KCS164D/E

TUBE FAILURE CHECK CHART

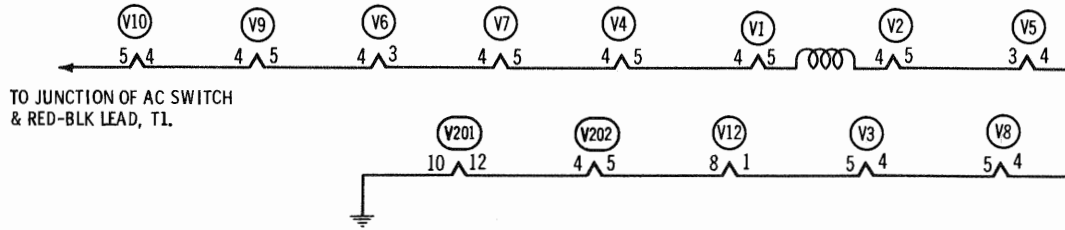
The following chart lists tubes whose failures are most likely to produce indicated symptoms. Refer to tube placement chart for location and type of tube.

- POWER SUPPLY FAILURE**  
No raster, no sound Line Fuse F2, Circuit Breaker F1, Rectifier X1

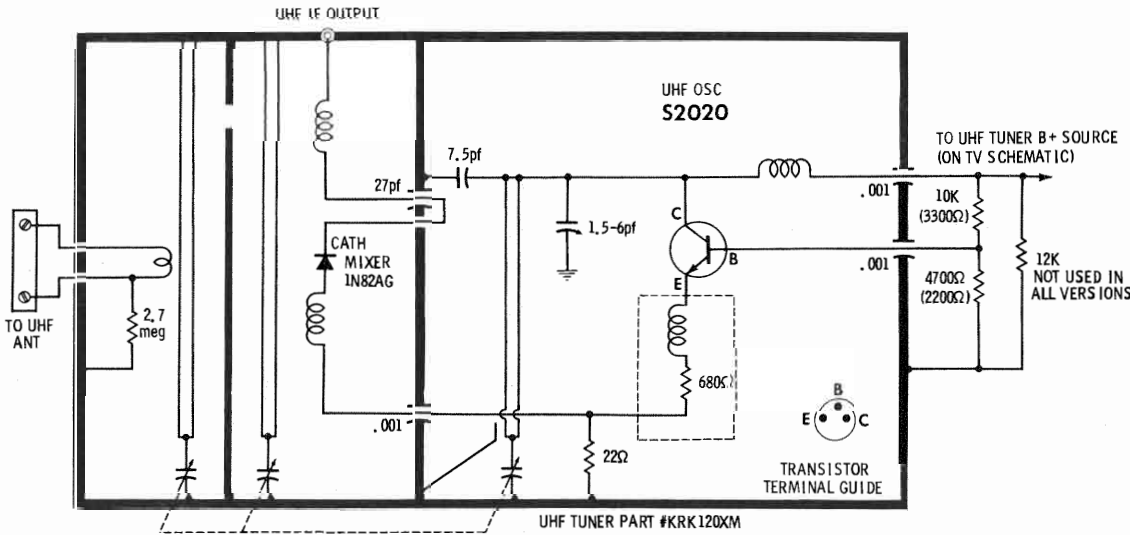
**SWEEP FAILURE**  
No raster, has sound V8, V9, V10, V11, V12  
No vertical deflection V7  
Poor vert. linearity or foldover V7  
Poor horiz. linearity or foldover V8, V9, V10  
Narrow picture V8, V9, V10, X1  
Vert. off freq. V7  
Horiz. off freq. AFC Diode X3, V8
- LOSS OF PICTURE OR SOUND**  
No pic, no sound, has raster V1, V2, Video Detector X2, V3  
No pic, no sound, has snow V202, V202, V1  
No pic, has sound, has raster V3, V12  
Has pic, no sound V4, V5, V8  
Overloaded picture V3

**SYNC FAILURE**  
No vert. sync V4  
No horiz. sync V4  
No vert. or horiz. sync V4

This receiver employs tubes used in a series filament network, an open filament in any tube will cause the set to be inoperative. (See circuit below.)

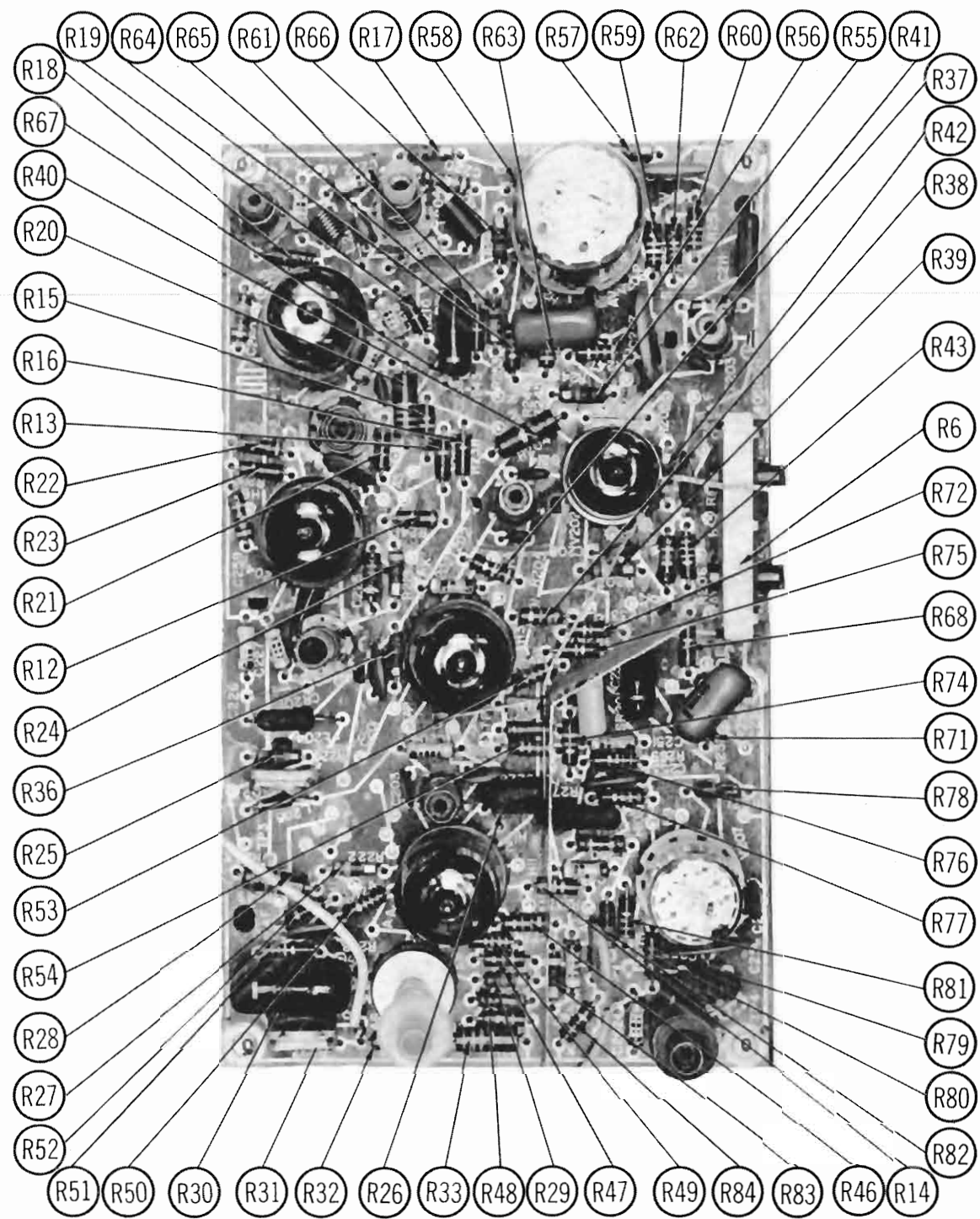


FOLDER 2

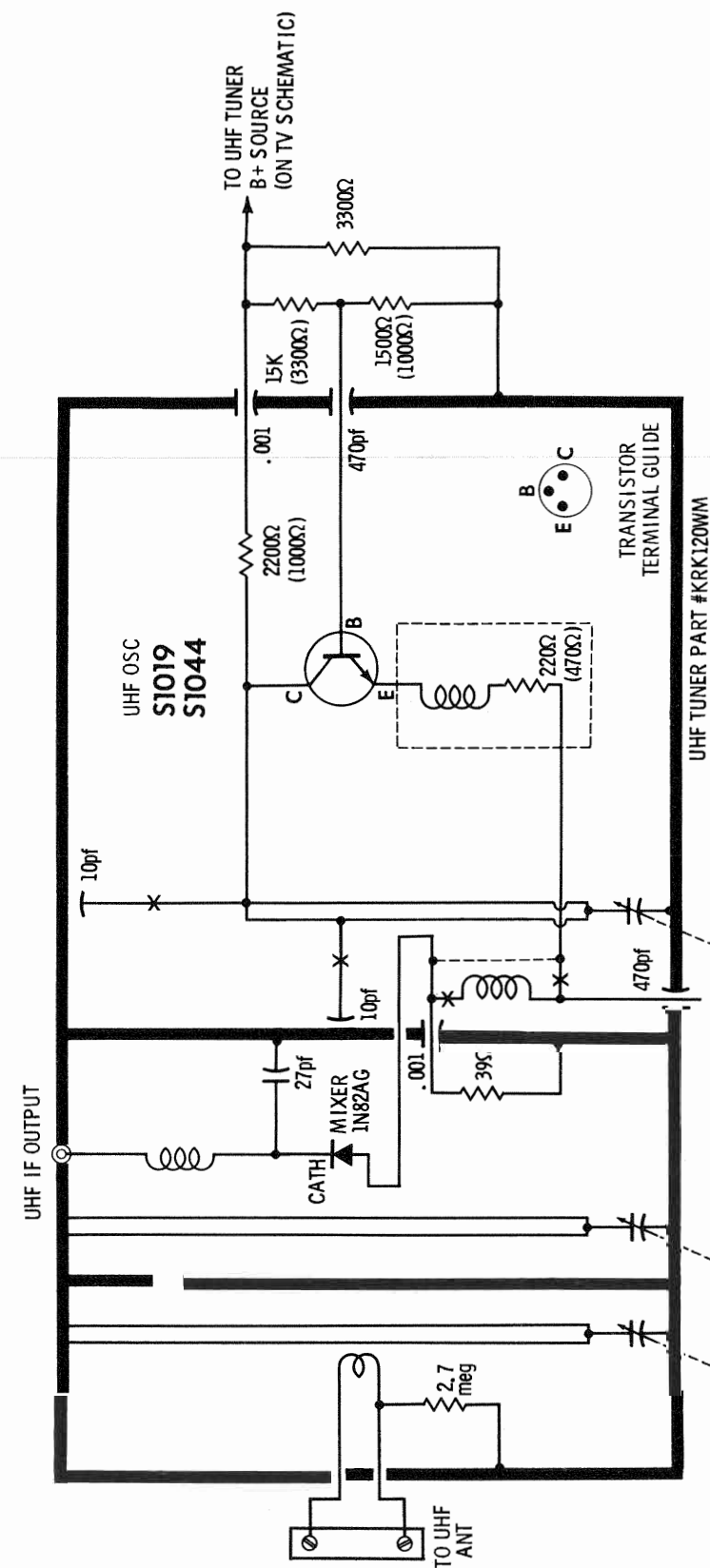


A PHOTOFAC STANDARD NOTATION SCHEMATIC  
© Howard W. Sams & Co., Inc. 1967

UHF TUNER KRK120XM

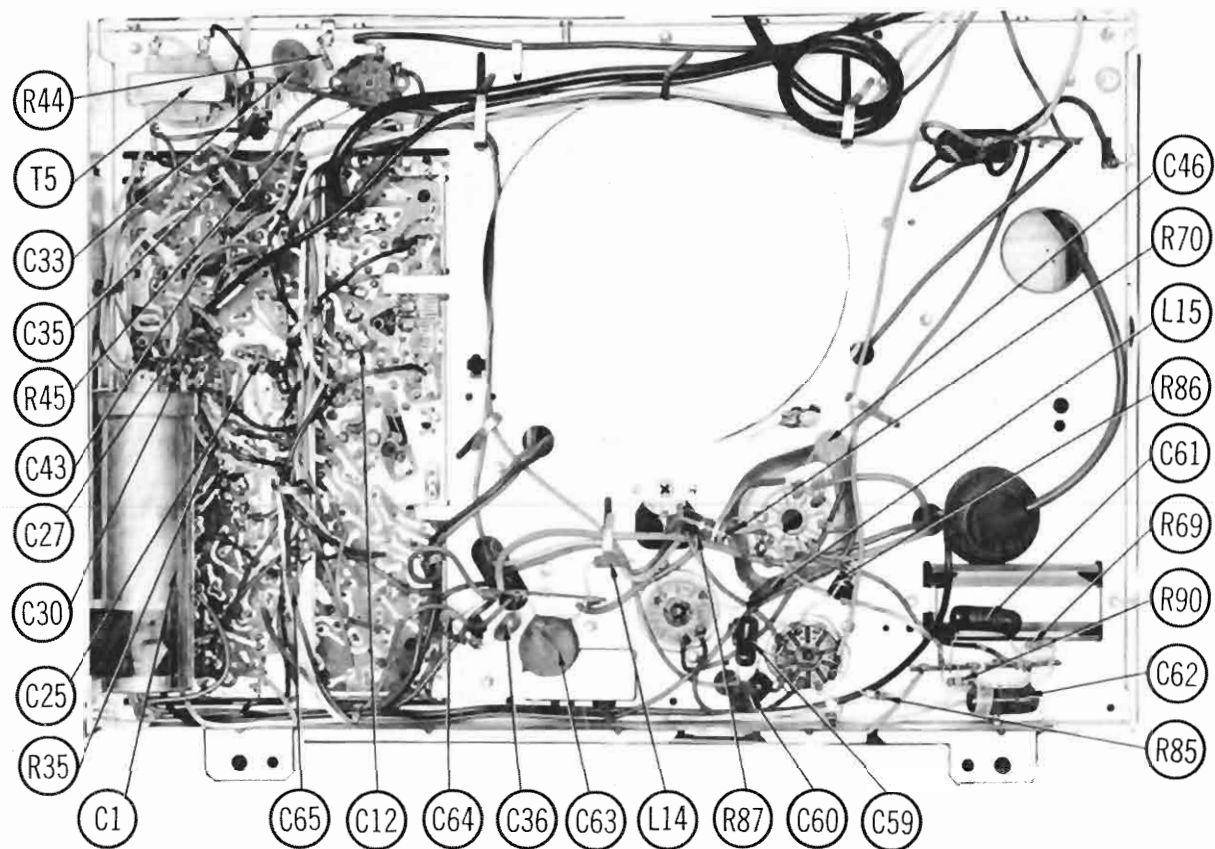


PRINTED BOARD

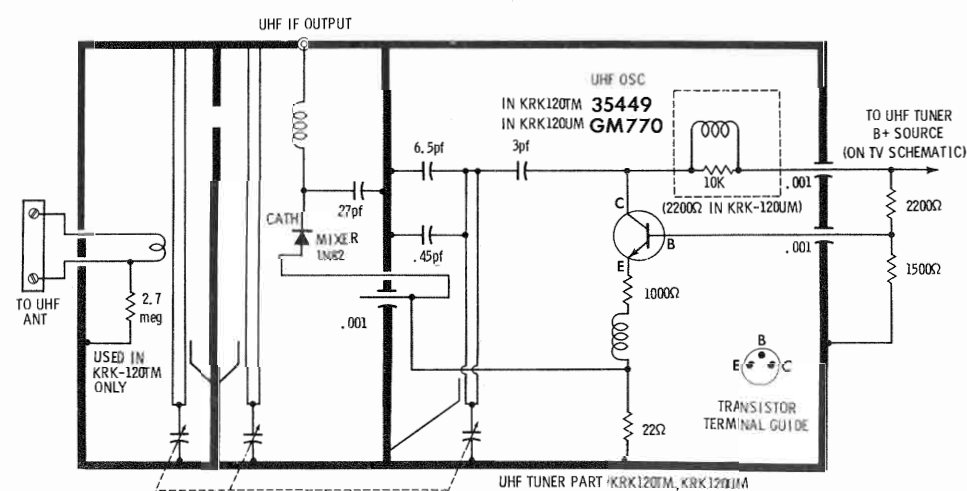


A PHOTOFACT STANDARD NOTATION SCHEMATIC  
© Howard W. Sams & Co., Inc. 1967

RCA VICTOR  
CHASSIS KCS164D/E  
UHF TUNER KRK120WM

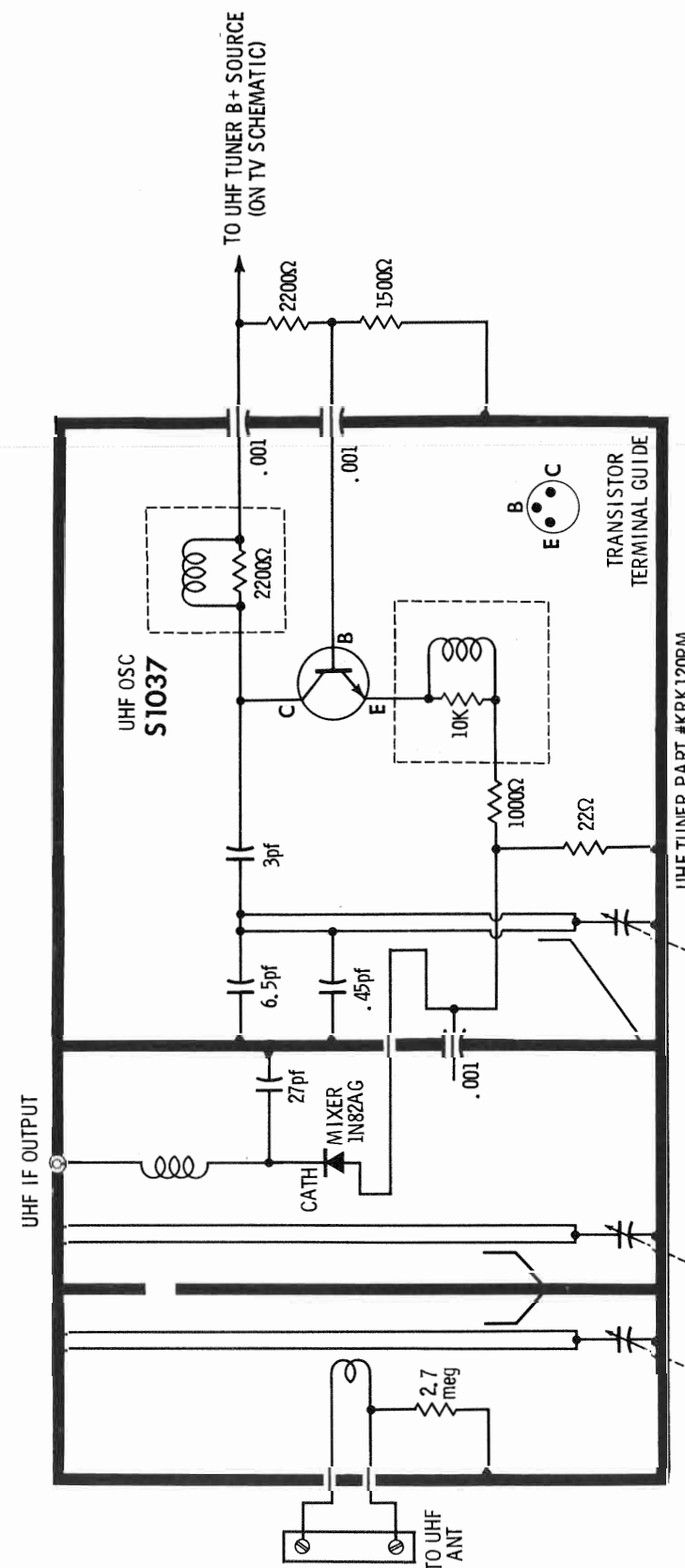


CHASSIS — FRONT VIEW



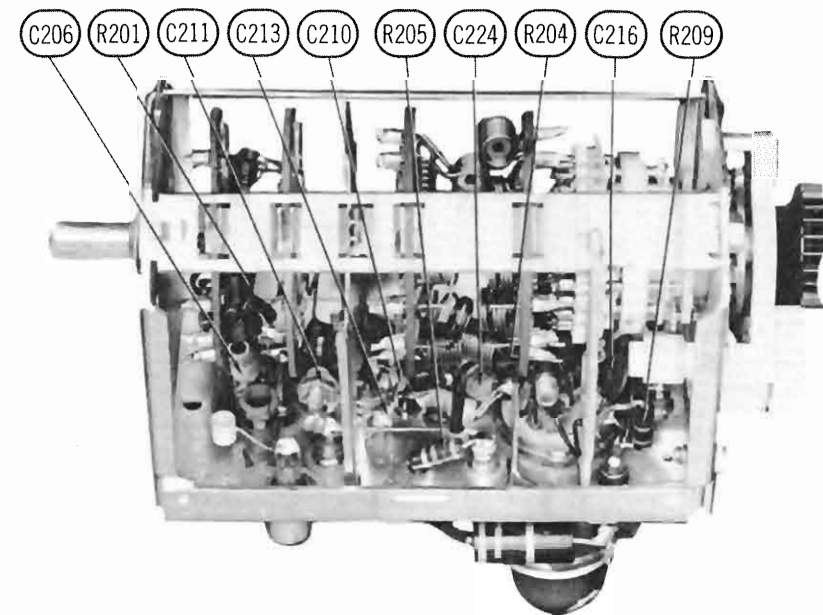
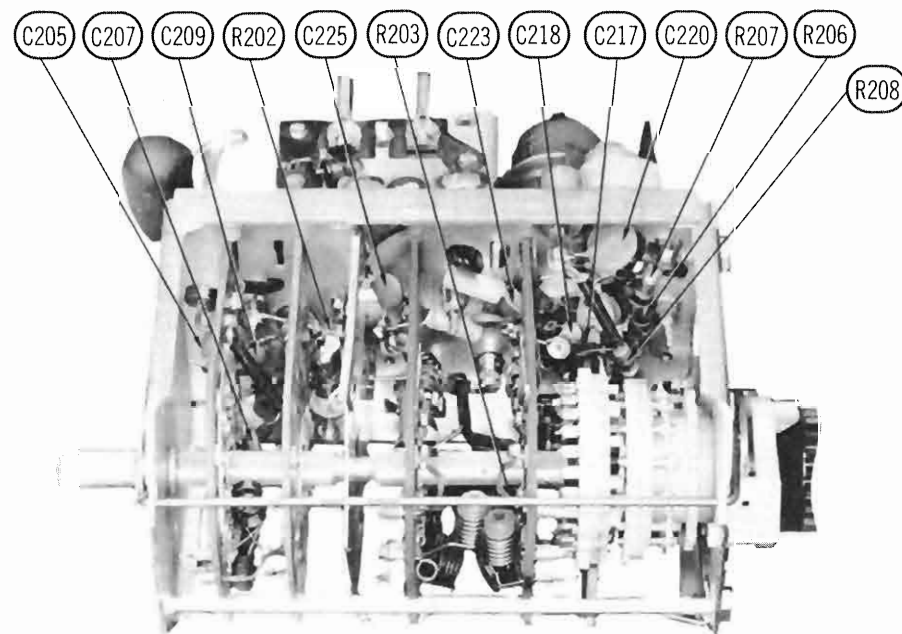
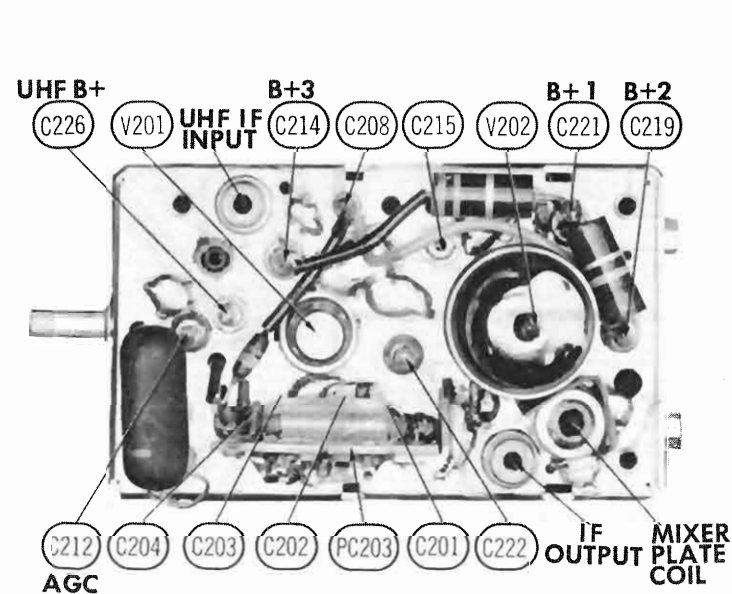
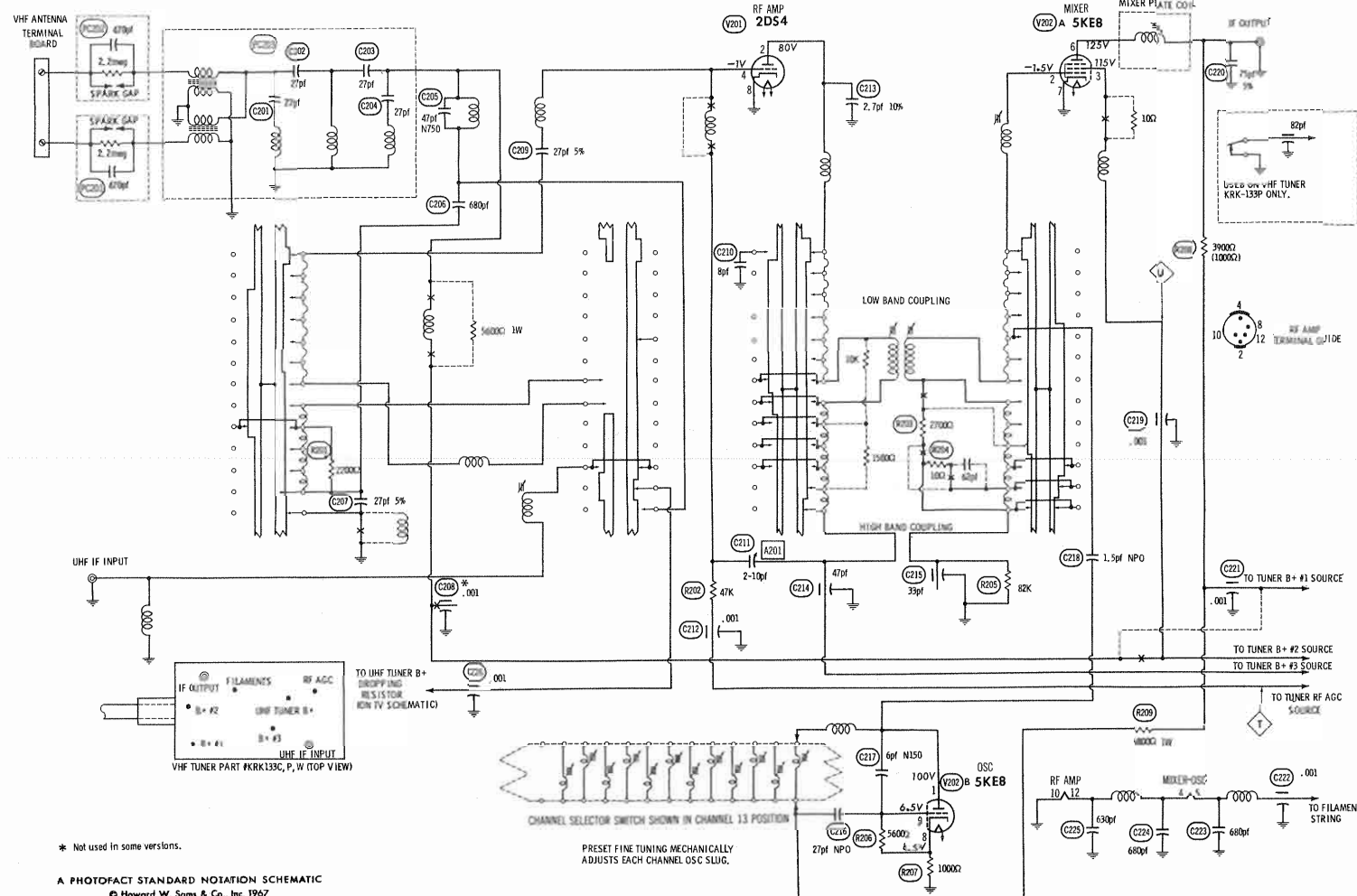
A PHOTOFACT STANDARD NOTATION SCHEMATIC  
© Howard W. Sams & Co., Inc. 1967

UHF TUNER KRK120TM, KRK120UM



A PHOTOFACT STANDARD NOTATION SCHEMATIC  
© Howard W. Sams & Co., Inc. 1967

UHF TUNER KRK120RM  
RCA VICTOR  
CHASSIS KC5164D/E



VHF TUNER KRK133C, P, W

## VHF TUNER ALIGNMENT INSTRUCTIONS

### OSCILLATOR ADJUSTMENTS

The oscillator for each channel is preset by means of the fine tuning control. Adjust fine tuning for best picture and sound on each channel.

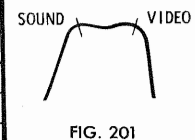
### RF AND MIXER ALIGNMENT

Connect the synchronized sweep voltage from the sweep generator to the horizontal input of the oscilloscope for horizontal deflection. Use 10MC sweep unless otherwise noted. Connect a variable bias to the RF AGC line at point (1). Adjust bias to obtain response curve which shows no indication of overloading.

SWEEP GENERATOR COUPLING	SWEEP GENERATOR FREQUENCY	MARKER GENERATOR FREQUENCY	CHANNEL	CONNECT SCOPE	ADJUST	REMARKS
1. Across antenna terminals with 120Ω in each lead.	21.5MC	21.25MC 215.75MC	13	Vert. Input to Point (1), low side to ground		Expand or compress appropriate coils for maximum gain and symmetry of response similar to Fig. 201 with markers as shown.
2. "	195MC	193.25MC 197.75MC	10	Across Video Det. load resistor.	A201	Increase bias to -15 volts and adjust for MINIMUM amplitude of response.
3. "	See Chart	See Chart	12 thru 2	Vert. Input to Point (1), low side to ground.		Check all channels and make compromise adjustments by expanding or compressing appropriate coils if necessary.

## CHANNEL & FREQUENCY CHART

SWEEP GENERATOR FREQUENCY	MARKER GENERATOR FREQUENCY	CHANNEL	SWEEP GENERATOR FREQUENCY	MARKER GENERATOR FREQUENCY	CHANNEL	SWEEP GENERATOR FREQUENCY	MARKER GENERATOR FREQUENCY	CHANNEL
57MC	55.25MC 59.75MC	2	85MC	81.25MC 87.75MC	6	195MC	193.25MC 197.75MC	10
63MC	61.25MC 65.75MC	3	171MC	175.25MC 179.75MC	7	201MC	199.25MC 203.75MC	11
69MC	67.25MC 71.75MC	4	183MC	181.25MC 185.75MC	8	207MC	205.25MC 209.75MC	12
75MC	73.25MC 77.75MC	5	189MC	187.25MC 191.75MC	9	213MC	211.25MC 215.75MC	13



## UHF TUNER ALIGNMENT INSTRUCTIONS

Tune to a UHF station and adjust UHF Input Coil for best picture and sound.

VHF TUNER PARTS LIST

VHF TUNER KRK133C, P, W

TUBES

* AMPEREX * GENERAL ELECTRIC * RCA * SYLVANIA *					
ITEM No.	USE	TYPE	ITEM No.	USE	TYPE
V201	RF Amp.	2DS4	V202	Mixer - Osc.	5KE8

CAPACITORS

ITEM No.	RATING	REMARKS	REPLACEMENT DATA											
			AEROVOX PART No.	CENTRALAB PART No.	CORNELL- DUBILIER PART No.	ELMENCO PART No.	MALLORY PART No.	SPRAGUE PART No.						
C201	27	N750	DI-27	DD-270	CY601UJ470K JBY601YP681K	CCD-270	GP427	10TS-Q27						
C202	27		DI-27	DD-270		CCD-270	GP427	10TS-Q27						
C203	27		DI-27	DD-270		CCD-270	GP427	10TS-Q27						
C204	27		DI-27	DD-270		CCD-270	GP427	10TS-Q27						
C205	47		N750-DI 47	DTN-47		CY601UJ470K	CCTN-470	CN7447	10TCU-Q47					
C206	680		DI-680	DD-681		JBY601YP681K	CCD-681	GP368	10TS-T68					
C207	27		EF-001	TCZ-27			CCTO-270	CNO427	10TCC-Q27					
C208	.001			MFT-1000			CCF-102	CT280A	10TCC-Q27					
C209	27			TCZ-27			CCTO-270	CNO427						
C210	8			DD-080				GP580						
C211	2-10	10%	EF-001	MFT-1000	JBZ601YP470K	CCF-102	CT280A	10TCC-V27						
C212	.001													
C213	2.7													
C214	47													
C215	33													
C216	27	NPO	NPO-DI 1.5	DTZ-1R5	JBY601YP681K	CCD-470	GP447	10TS-Q47						
C217	6	N150												
C218	1.5	NPO												
C219	.001	5%												
C220	75													
C221	.001													
C222	.001													
C223	680													
C224	680													
C225	630													
C226	.001		EF-001	MFT-1000			CCF-102	CT280A						

\* Not normally in distributor's stock. Available thru distributor on order to manufacturer.

COMPONENT COMBINATIONS

ITEM No.	USE	DESCRIPTION	RCA Victor PART NO.	REPLACEMENT DATA
PC201	Antenna Isolation	2.2meg, 470pf (Includes Spark Gap)	109956	
PC202	Antenna Isolation	2.2meg, 470pf (Includes Spark Gap)	109956	

UHF TUNER PARTS LIST

UHF TUNER KRK122DH

TRANSISTORS

ITEM No.	ORIG. TYPE	USE	REPLACEMENT DATA				NOTES	RCA Victor PART No.
			DELCO PART No.	GENERAL ELECTRIC PART No.	INTERNATIONAL RECTIFIER PART No.	RCA PART No.		
Q301	S1019 (S1044) †	UHF Oscillator		GE-11	TR-24	SK-3019	NPN	113938

† Alternate Type used in some versions.

POWER RECTIFIERS & SIGNAL DIODES

ITEM No.	MEASURED CURRENT	ORIGINAL Part or Type No.	RECTIFIERS & DIODES		RECTIFIERS		
			GENERAL ELECTRIC PART No.	INTERNATIONAL RECTIFIER PART No.	MALLORY PART No.	RCA PART No.	SARKES TARZIAN PART No.
X301		1N82AG	1N82A	1N82AG			

CAPACITORS

ITEM No.	RATING	REMARKS	REPLACEMENT DATA					
			AEROVOX PART No.	CENTRALAB PART No.	CORNELL-DUBILIER PART No.	ELMENCO PART No.	MALLORY PART No.	SPRAGUE PART No.
C301	27 10%							
C302	10 N220							
C303	100							
C304	100							

MISCELLANEOUS

ITEM No.	PART NAME	RCA Victor PART No.	NOTES
	Cover, Outer	121092	
	Cover	121094	
	Drive	121090	Oscillator Section
	Shaft	121098	Tuner Drive Assembly Shaft and Gear Assembly

PARTS LIST AND DESCRIPTION

(When ordering parts, state Model, Part Number, and Description.)

Replacement parts shown may be superseded by the availability of newly introduced replacements.  
Have your local distributor check Sams COUNTER FACTS\* for the most up-to-date replacement.

WIRING DATA

High Voltage Lead .....	Use BELDEN No. 8869 (17KV) or 8868 (25KV)
Shielded Hook-up Wire .....	Use BELDEN No. 8885 (Single Conductor) 8738 (Two Conductor)
General-use Unshielded Hook-up Wire .....	Use BELDEN No. 8530 (Solid) Available in 12 Colors 8524 (Stranded) Available in 12 Colors
Power Cord (Interlock Type) .....	Use BELDEN No. 8874 (Rubber) or 8895 (Plastic)
3000 Tuner Input Lead .....	Use BELDEN No. 8225
3000 Antenna Lead-in .....	Use BELDEN No. 8230 or 8275
Antenna Rotor Cable .....	Use BELDEN No. 8464 (Flat) or 8484 (Round) - 4 Conductor 8485 (Round) - 5 Conductor 8488 (Round) - 8 Conductor

TUBES

* AMPEREX * GENERAL ELECTRIC * RCA * SYLVANIA *					
ITEM No.	USE	TYPE	ITEM No.	USE	TYPE
Q301	UHF Osc. (Transistor)	S1019 (S1044) *	V6	Audio Output	12FX5
V201	RF Amp.	2DS4	V7	Vert. Mult. -Vert. Output	15KY8A
V202	Mixer - Osc.	5KE8	V8	Horiz. Mult.	8FQ7
V1	1st Video IF	4E117	V9	Horiz. Output	22JF6
V2	2nd Video IF	4JC6A	V10	Damper	17CK3
V3	Video Output -AGC Keying	11LQ8	V11	HV Rectifier	1G3/1B3
V4	Sound IF - Sync Sep.	6GH8A			
V5	Audio Det.	6HZ6			

\* Alternate Transistor

PICTURE TUBE

ITEM No.	REPLACEMENT DATA				NOTES
	RCA Victor PART No.	GENERAL ELECTRIC PART No.	RCA PART No.	SYLVANIA PART No.	
V12	19FEP4B *		19FEP4B ①	19FEP4 ②	①Aluminized ②Silver Screen "85"

\* Alternate 19FEP4A

POWER RECTIFIERS & SIGNAL DIODES

ITEM No.	MEASURED CURRENT	ORIGINAL Part or Type No.	RECTIFIERS & DIODES		RECTIFIERS		
			GENERAL ELECTRIC PART No.	INTERNATIONAL RECTIFIER PART No.	MALLORY PART No.	RCA PART No.	SARKES TARZIAN PART No.
X1	.34A	113998 (EG100)	GE-505 or GE-504A	5A4-D or SD500	1N2070 or 1N540	SK-3016 or SK-3017A	40C or F-4
X2		112524	1N60	1N60			
X3		109474	6GC1	DD04			

ELECTROLYTIC CAPACITORS

ITEM No.	RATING		REPLACEMENT DATA					
	CAP.	VOLT.	RCA Victor PART No.	AEROVOX PART No.	CORNELL-DUBILIER PART No.	GENERAL ELECTRIC PART No.	MALLORY PART No.	SPRAGUE PART No.
C1A	▲160	200	115481 (972187-33)	AFH4-01-89			FP412.13 & TC68	TVL-4479.14
B	■450	200						
C	5	200						
D	▲60	200						

CAPACITORS

ITEM No.	RATING	REMARKS	REPLACEMENT DATA					
			AEROVOX PART No.	CENTRALAB PART No.	CORNELL-DUBILIER PART No.	ELMENCO PART No.	MALLORY PART No.	SPRAGUE PART No.
C2	62 N750 5%			TCN-62		CCTN-620		
C3	14 N75 5%					*		
C4	.001 N220					CCTO-050		
C5	5 NPO		NPO-DI 5.0	DTZ-4R7	CZ601CH5R0D	CCTO-050	CNO547	10TCC-V50
C6	5 NPO		NPO-DI 5.0	DTZ-4R7	CZ601CH5R0D	CCTO-050	CNO647	10TCC-V50
C7	62 N750 5%			TCN-62		CCTN-620		
C8	560		DI-560	DD-561	JBY601YP561K	CCD-561	GP356	10TS-T56
C9	.001		DI-1000	DD-102	JBS601YP102K	CCD-102	GP210	10TS-D10
C10	.0018		DI-1800	DD-182	JBX601YP182K	CCS-182	GP218	10TS-D18
C11	620			TCN-620		CCTN-620	GP360	10TS-T60
C12	.001	#109931	DI-1000	DD-102	JBS601YP102K	CCD-102	GP210	10TS-D10
C13	22 N220 5%					*		10TCR-Q22
C14	5 NPO 5%					CCTO-050	CNO547	10TCC-V50
C15	68 N750		NPO-DI 5.0	DTZ-4R7	CZ601CH5R0D	CCTN-680	CN7468	10TCU-Q68
C16	10 NPO 5%		N750-DI 68	DTN-68	CS601UJ680K	CCTO-100	CNO410	10TCC-Q10
C17	39 N150		NPO-DI 10	DTZ-10	CZ601CG100J	*		10TCP-Q39
C18	.022 100V					4DP-2-223	PVC6122	4PS-S22
C19	.001		DBE4S22	DD-102	DMF4S22	CCD-102	GP210	10TS-D10
C20	100 N1500		DI-1000		JBS601YP102K	*		
C21	.15 200V					4DP-4-154	PVC6015	4PS-P15
C22	.01	#118399				CCD-103	GP110	10TS-S10
C23	12		DI-10000	DD-103	BYX601ZU103M	CCTO-120	CNO412	10TCC-Q12
C24	12			TCZ-12	CZ601CG120J	CCTO-120	CNO412	10TCC-Q12
C25	.18pf							
C26	.001		DI-1000	DD-102	JBS601YP102K	CCD-102	GP210	10TS-D10
C27	.0015		DI-1500	DD-152		CCD-152	GP215	10TS-D15
C28	10		NPO-DI 10	DTZ-10	CZ601CG100J	CCTO-100	CNO410	10TCC-Q10
C29	.047 100V				DMF2S47	4DP-3-473	PVC2147	2PS-S47
C30	68 N750		N750-DI 68	DTN-68	CS601UJ680K	CCTN-680	CN7468	10TCU-Q68
C31	680		DI-680	DD-681	JBY601YP681K	CCD-681	GP368	10TS-T68
C32	.01		DI-10000	DD-103	BYX601ZU103M	CCD-103	GP110	10TS-S10
C33	.0068		DI-6800	DD-682	BYX601ZU682P	CCD-682	GP268	10TS-D68
C34	.22 100V				DMF4P22	4DP-5-224	PVC4022	4PS-P22

SET 897 FOLDER 2

RCA VICTOR  
CHASSIS KC5164D/E

FOLDER 2

CAPACITORS (cont)							
ITEM No.	RATING	REMARKS	REPLACEMENT DATA				
			AEROVOX PART No.	CENTRALAB PART No.	CORNELL-DUBILIER PART No.	ELMenco PART No.	MALLORY PART No.
C35	.1 200V	#109293	DBE2P1		DMF4S33	2DP-3-104	PVC201
C36	.0018 5%		DI-4700	CPR-1800J	DMF4S33	DM-18-182	MS-218
C37	.0047 470		DI-4700	DD-471	DMF4S33	CCD-472	GP247
C38	.0033 200V		DBE4S33		DMF4S33	CCD-471	GP247
C39	100 N1500		DBE6S18		DMF4S33	*	10TS-D47
C40	.0049 N5600		DBE4S33		DMF4S33	4DP-2-333	PVC6133
C41	.033 200V		DBE6S18		DMF4S33	16DP-2-252	GEM16227
C42	.018 200V		DBE4S33		DMF4S33	4DP-2-333	PVC6133
C43	.0027 1KV		DBE4S15		DMF4S15	4DP-1-153	PVC6115
C44	.033 200V					*	4PS-S33
C45	.015 200V	#119193	DI-820	DD-821	JBY601YP821K	CCD-821	GP382
C46	56 N750 2KV		DI-1000	DD-102	JRS601YP102K	CCD-102	GP210
C47	68 N1500		DI-1000	DD-102	JRS601YP102K	CCD-102	GP210
C48	.001		DBE6S56		PKM4S56	4DP-3-563	PVC4056
C49	.001		DI-3300	DD-332	JBY601YP332K	CCD-332	GP233
C50	.056 100V		NT50-DI 68	DD-68	CPR-3900J	CCD-68	CNT468
C51	.0033		DBE6S27		DMF4S27	6DP-1-392	PVC6239
C52	68 N750		DBE4S47		DMF4S47	*	6PS-D39
C53	.0039 100V					CCD-391	10TCU-T39
C54	100 N750 21/2		DI-3300	DD-332	JBY601YP332K	CCD-332	GP233
C55	390 N750 5%	#119193	DI-220	DD-221	JBY601YP221K	CCD-221	GP322
C56	.033		DBE4S33		DMF4S33	4DP-2-333	PVC6133
C57	.047 200V		DBE6S27		DMF6S27	4DP-3-473	PVC2147
C58	.027 600V		DBE4S47		DMF4S47	6DP-2-273	6PS-S27
C59	.047 400V					4DP-3-473	PVC4147
C60	200 N1500 4KV 5%		DI-150	DD-151	JBS601YP102K	CCD-151	GP315
C61	.150		DI-1000	DD-102	JBS601YP102K	CCD-102	GP210
C62	.001		DI-1000	DD-102	JBS601YP102K	CCD-102	GP210
C63	.001		DI-1000	DD-102	JBS601YP102K	CCD-102	GP210
C64	.001		DI-680	DD-681	JBY601YP681K	CCD-681	GP368
C65	.1 600V		DBE6P1		DMF6P1	6DP-4-104	PVC601

\* Not normally in distributor's stock. Available thru distributor in order to manufacturer.  
# RCA Victor Part Number

## PARTS LIST AND DESCRIPTION (CONTINUED)

(When ordering parts, state Model, Part Number, and Description.)

Replacement parts shown may be superseded by the availability of newly introduced replacements.  
Have your local distributor check Sams COUNTER FACTS for the most up-to-date replacement.

### COILS (RF-IF)

ITEM No.	USE	REPLACEMENT DATA				
		RCA Victor PART No.	MEISSNER PART No.	MERIT PART No.	MILLER PART No.	WORKMAN PART No.
L1A	47.25MC Trap	114313				
L1B	39.75MC Trap	114314				
L2	RF Choke (8 turns)	114315				
L3	RF Choke (19 turns)	118696			7516-E	
L4	1st Video IF	114317	17-3418		7514-E	TB-297
L5	2nd Video IF	109158				
L6	3rd Video IF	114317				
L7	Peaking (36uh)	116056	19-3036	TV-180	6176	T301
L8	RF Choke (2.7uh)	107463	19-1002	SW-630	74F276AP	T857
L9	Peaking (330uh)	113280	19-3330	BC-675	72F334AP	T349
L10	4.5MC Trap/Sound Takeoff	114489				
L11	Peaking (250uh)	119944	19-3250	BC-674	6181	T346
L12	Sound Interstage	118411				
L13	Quadrature	118412			7110-W	
L14	RF Choke (8.2uh)	107385	19-1009	BC-566	74F826AP	T960
L15	RF Choke (8.2uh)	107385	19-1009	BC-566	74F826AP	T960
L16	Dual Line Choke(58uh)	114293			5248 *	

\* Requires Two.

### COILS (SWEEP CIRCUITS)

ITEM No.	USE	REPLACEMENT DATA					
		RCA Victor PART No.	MERIT PART No.	MILLER PART No.	STANCOR PART No.	THORDARSON MEISSNER PART No.	TRIAD PART No.
L17	Horiz. Stabilizer	114486		6213 ①			TA140 ①

① Position for proper circuit operation.

### FILTER CHOKE

ITEM No.	RATINGS		REPLACEMENT DATA					NOTES
	CURRENT (Measured)	DC RES. (Ω)	RCA Victor PART No.	MERIT PART No.	STANCOR PART No.	THORDARSON PART No.	TRIAD PART No.	
L18	.34ADC	17.2Ω	115426	C-4133 ①	C-2708 ①	20C137 ①	C-40X ①	① Drill New Mtg. Holes

### TRANSFORMER (POWER)

ITEM No.	RATING			REPLACEMENT DATA					NOTES
	PRI.	SEC. 1	SEC. 2	RCA Victor PART No.	MERIT PART No.	STANCOR PART No.	THORDARSON PART No.	TRIAD PART No.	
T1	138VAC @ .34A DC Tap @ 117V AC @ 1.3A			118527 (906198-902)					

### \* TRANSFORMERS (SWEEP CIRCUITS)

ITEM No.	USE	REPLACEMENT DATA					NOTES
		RCA Victor PART No.	MERIT PART No.	STANCOR PART No.	THORDARSON PART No.	TRIAD PART No.	
T2	Vert. Output	118502 (1460634-3)					
T3	Yoke (Horiz.=23.5mh) 114 <sup>0</sup> (Vert. 67mh)	118526 (906228-501)	MDF-143	DY-57AT	Y-66	YT-103-1	
T4	Horiz. Output	118498 (906226-501)					

### \* COMPONENT CONNECTION DATA

ORIGINAL →	HV TRANSFORMER	VERTICAL OUTPUT	YOKE	YOKE PLUG
REPLACEMENT ↓	Original Connections	Original Connections	Original Connections	TO YOKE TERMINAL
			1 2 3 4 5 6 7 8	1 2 3 4 5 6 7 8
MERIT			1 2 3 4 8 6 7 5	6 4 2 3 1 7
STANCOR			7 3 2 4 8 6 1 5	6 4 3 7 1
THORDARSON			3 7 1 6 8 4 2 5	4 6 7 3 1 2
TRIAD			1 2 3 4 8 6 7 5	6 4 2 3 1 7

▲ Remove Orange lead, 82pf Capacitor, and Vertical Damping Resistors.

† Remove Yellow lead, 68pf Capacitor, and Vertical Damping Resistors, and Jumper between Yoke Terminals 5 & 8.

‡ Remove 75pf Capacitor and Yoke Plug. Rewire Yoke Plug as shown above.

†† Jumper Yoke Plug Pins 6 and 7.

### TRANSFORMER (AUDIO OUTPUT)

ITEM No.	IMPEDANCE		REPLACEMENT DATA				NOTES
	PRI.	SEC.	RCA Victor PART No.	MERIT PART No.	STANCOR PART No.	THORDARSON PART No.	
T5	6174Ω	3-4Ω	118409 (1472666-2)	A-3032 ① ②	A-3856 ① ②	22S25	S-48X ① Drill New Mtg. Holes ② Cut & Tape Tap

### SPEAKER

ITEM No.	TYPE	REPLACEMENT DATA			NOTES
		RCA Victor PART No.	JENSEN PART No.	QUAM PART No.	
SP1	3" x 5" PM 3-4Ω	112713 (973925-5)	P3X5X3	35A05	

### FUSE DEVICES

ITEM No.	DESCRIPTION	REPLACEMENT DATA					
		DEVICE	HOLDER	DEVICE	HOLDER	DEVICE	HOLDER
F1	Circuit Breaker 1.75A	130950 (941830-5)				8151.75	
F2	1 1/2" length #24 fuse wire						FA2

### MISCELLANEOUS

ITEM No.	PART NAME	RCA Victor PART No.	NOTES
M1	VHF Tuner	KRK133C	
M2	VHF Tuner	KRK133W	
M2	VHF Tuner	KRK133P	
M2	VHF Tuner	KRK132D	
M2	VHF Tuner	KRK120R	
M2	VHF Tuner	KRK120T	
M2	VHF Tuner	KRK120U	
M2	VHF Tuner	KRK120W	
M2	VHF Tuner	KRK120X	
M3	VHF Antenn <sup>a</sup>	113361 (I.H.)	JFD Replacement TA461, Models AJ087E, M, W.
M3	VHF Antenn <sup>a</sup>	116572 (I.H.)	JFD Replacement TA466, Models AJ087E, M, W.
M4	VHF Antenn <sup>a</sup>	114984	JFD Replacement TA461, Models AJ091M, W (2 used) JFD Replacement TA432.

### CABINETS & CABINET PARTS

(When Ordering Specify Model, Chassis & Color)

ITEM No.	MODELS	PART No.	ITEM No.	MODELS	PART No.
Handle	AJ087E	121152	Knob - VHF Selector	AJ087W/E	121225
Handle	AJ087M	121153	Knob - VHF Selector	AJ087M	121156
Handle	AJ087W	119225	Knob - VHF Selector	AJ081M/W	121178
Handle	AJ091M/W	121249	Knob - Fine Tuning	AJ087W/E	119985
Dial Control - UHF Tuning	AJ091M/W	121250	Knob - Fine Tuning	AJ087M	119986
Mask	AJ087E	121147	Knob - Fine Tuning and		
Mask	AJ087M	121148	UHF Selector	AJ091M/W	121175
Mask	AJ087W	121149	Knob - On/Volume, Brightness	AJ087W/E	118382
Mask	AJ091M	121246	Knob - On/Volume, Brightness	AJ087M, AJ091M/W	118383
Mask	AJ091W	121247			
Cabinet Back	AJ087W/E	121150			
Cabinet Back	AJ087M	121151			
Cabinet Back	AJ091M/W	121248			

### RESISTORS (Power and Special)

ITEM No.	RATING	REPLACEMENT DATA			ITEM No.	RATING	REPLACEMENT DATA		
		IRC PART No.	WORKMAN PART No.	RCA Victor PART No.			IRC PART No.	WORKMAN PART No.	RCA Victor PART No.
R73	Thermistor 50 Cold		FR5	118375	R88	.82Ω 2W (10 5%)	BWH-.82	WS-.82	227522

### COMPONENT COMBINATIONS

ITEM No.	USE	DESCRIPTION	RCA Victor PART No.	REPLACEMENT DATA
PC1	Vertical Integrator	68K, 190pf, .001, .0018	114016 (973947-8)	