

CABINET-REAR VIEW

## HORIZONTAL SWEEP CIRCUIT ADJUSTMENTS

Turn the set on and tune in a TV station, preferably with a test pattern. Set all controls for normal operation.

Turn the Horizontal Hold (Osc. Coil Slug) clockwise until the picture loses sync. It may be necessary to switch off channel and back again for the picture to lose sync.

Turn the Horizontal Hold slowly counterclockwise until the picture just falls into sync.

## DISASSEMBLY INSTRUCTIONS

### CHASSIS REMOVAL

1. Remove rear cover (8 screws). Remove knobs from front.
2. Remove cover from bottom (12 screws).
3. Remove 4 bolts holding chassis to bracket.
4. Remove 7 screws holding tuner and control brackets.

5. Unplug yoke, picture tube socket. Remove anode lead and speaker leads. Remove chassis.

NOTE: It is not necessary to remove chassis for most servicing. Remove bottom and rear covers.

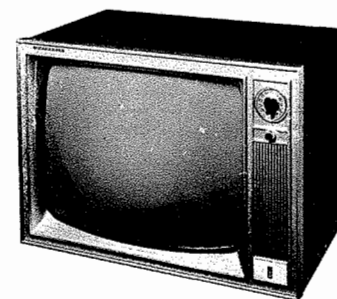
### PICTURE TUBE REMOVAL

It is necessary to remove chassis to replace picture tube.

SET 622 FOLDER 1

MOTOROLA CHASSIS  
584, 584Y SERIES

## PHOTOFACT® Folder



## MOTOROLA CHASSIS 584, 584Y SERIES

### IMPORTANT FILING NOTICE

Some models covered by this PHOTOFACT Folder employ chassis in addition to the TV chassis. PHOTOFACT Folders covering these additional chassis are packaged immediately behind this Folder and should be filed with this Folder in the yellow filing jacket provided. For specific coverage see index below.

### INDEX

Remote Control Receiver TRR-1, TRR-2,  
Transmitter TRT-1, TRT-2 . . SET 622, FOLDER 1-A

### MODEL 23T16 MA

TRADE NAME	MOTOROLA	Models	Chassis	Remote Chassis
	A23K100B, M, W, A23K101B, M, W, A23K102M, W, A23K103W . . .		ADETS-584 . . .	TRR-1, TRR-2
	A23K100BD, MD, WD, A23K101BD, MD, WD, A23K102MD, WD,			
	A23K103WD . . .		DADETS-584 . . .	TRR-1, TRR-2
	23K76CWA, MA, WA, 23T16BA, CWA, MA, WA . . .		DETS-584	
	23T15BRA . . .		CETS-584	
	23K90M, MA, W, WA, 23K91CW, 23K95M, 23K96CW . . .		ETS-584	
	27K10MA, WA, 27K11MA, WA . . .		GTS-584	
	23T15BRLA . . .		KETS-584	
	23K87M, W, 23K88W . . .		LDETS-584	
	23K82B, M, W, 23K83MP, 23K84B, M, W . . .		PCETS-584	
	Y23K82B, M, W, Y23K83MP, Y23K84B, M, W, Y23T15BRA . . .		CETS-584Y	
	Y23K76CWA, MA, WA, Y23T16BA, CWA, MA, WA . . .		DETS-584Y	
	Y23K90M, MA, W, WA, Y23K91CW, Y23K95M, Y23K96CW . . .		ETS-584Y	
	Y23K87M, W, Y23K88W . . .		LDETS-584Y	
	Y27K10MA, WA . . .		GTS-584Y	
	Y27K11MA, WA . . .		GTS-584Y	
MANUFACTURER	Motorola Inc., 4545 W. Augusta Blvd., Chicago 51, Illinois			
TYPE SET	Television Receiver (Remote Control used in some models)			
TUBES	VHF - Seventeen, UHF - Eighteen			
POWER SUPPLY	110-120 Volts AC, 60 Cycle			
TUNING RANGE	Channel 2 thru 13 VHF, 14 thru 83 UHF, Video IF 45.75 MC, Sound IF 41.25 MC (Intercarrier)			
		RATING	215 Watts, 1.85 Amp. @ 117 Volts AC	
			Channel 2 thru 13 VHF, 14 thru 83 UHF, Video IF 45.75 MC, Sound IF 41.25 MC (Intercarrier)	

### VHF TUNERS

DCPTT/CPTT-330  
WTT/TT-320Y  
CPTT-329  
SPTT/PTT-322Y  
ASPTT-334  
SPTT-333  
ACPTT-331  
WTT-319  
STT-327  
PTT-322

### UHF TUNERS

KTT/LTT-601

## SERVICING IN THE FIELD

### SAFETY GLASS REMOVAL

For picture tube and safety glass cleaning, it is necessary to remove the chassis. (See "Disassembly Instructions".)

### FUSE OR FUSE DEVICE

A Circuit Breaker is used for low voltage power supply protection, and may be reset by depressing the reset button. (For location, see "Tube Placement Chart".)

### TUNER OSCILLATOR ADJUSTMENTS

Tuners PTT-322, PTT/SPTT-322Y, ASPTT-334, SPTT-333: The Fine Tuning adjusts Osc. slug (one slug each channel). Tuners WTT-319, WTT/TT-320Y, STT-327: Osc. may be touched up with Osc. slug (one for each channel) in conjunction with Fine Tuning. Tuners ACPTT-331, DCPTT/CPTT-330, CPTT-329: One Osc. slug is used for each channel.

### AGC

No provisions are made to vary the AGC on this receiver.

### FOCUS

The focus may be varied by connecting the lead from pin 6 of the picture tube to various voltage points.

### SYNC STABILITY

Sync stability may be varied by means of a Noise Gate Control. (For location, see "Tube Placement Chart".)

### HORIZ OSCILLATOR FIELD ADJUSTMENT

The horizontal oscillator coil slug is used for the horizontal hold.

### WIDTH

The width may be varied by a Horizontal Size Control. For location, see "Tube Placement Chart".)

### CENTERING

Centering is accomplished by 2 magnetic rings, located behind the yoke, on the neck of the picture tube.

### OPTIMIZER (VIDEO BANDPASS) CONTROL ADJUSTMENT

Adjust Brightness, Contrast, and Fine Tuning for best picture and sound. Starting with Optimizer at mechanical mid-range, adjust control for best picture (low resistance setting for strong areas, high resistance setting for weak signal areas).

## HOWARD W. SAMS & CO., INC. Indianapolis 6, Indiana



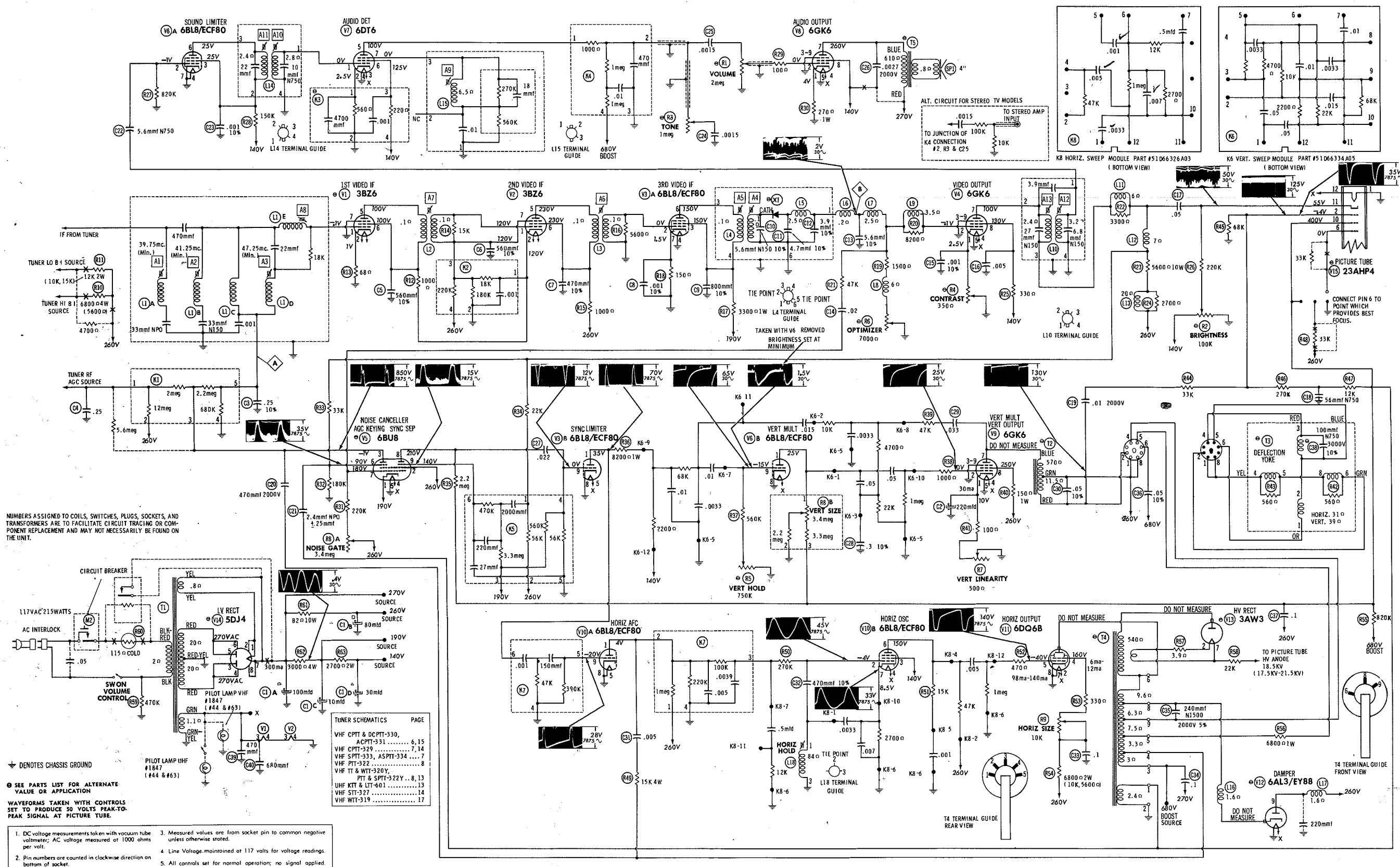
The listing of any available replacement part herein does not constitute in any case a recommendation, warranty or guaranty by Howard W. Sams & Co., Inc., as to the quality and suitability of such replacement part. The numbers of these parts have been compiled from information furnished to Howard W. Sams & Co., Inc., by the manufacturers of the particular type of replacement LA763

part listed. Reproduction or use, without express permission, of editorial or pictorial content, in any manner, is prohibited. No patent liability is assumed with respect to the use of the information contained herein. ©1963 Howard W. Sams & Co., Inc., Indianapolis 6, Indiana.

Printed in U.S. of America

MOTOROLA CHASSIS  
584, 584Y SERIES

SET 622 FOLDER 1



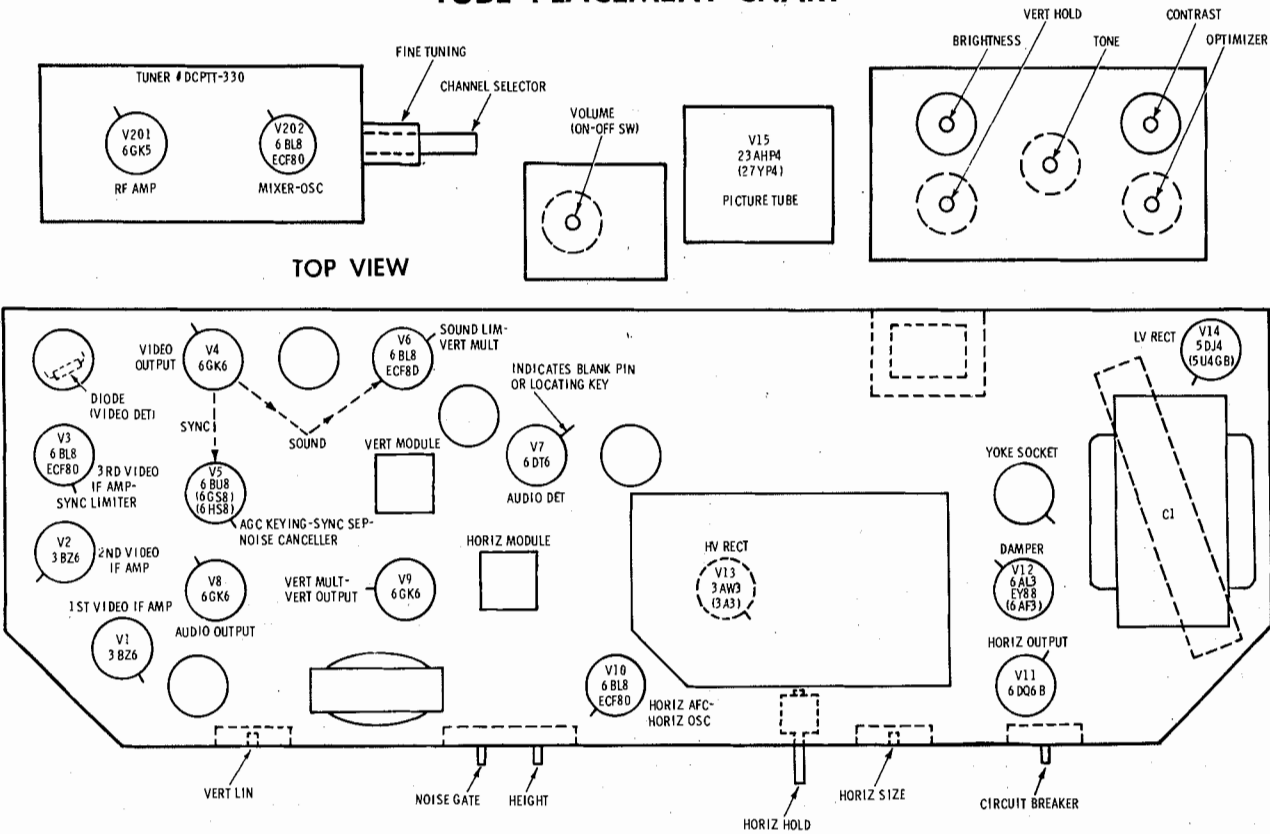
1. DC voltage measurements taken with vacuum tube voltmeter; AC voltage measured at 1000 ohms per volt.  
2. Pin numbers are counted in clockwise direction on bottom of socket.  
3. Measured values are from socket pin to common negative unless otherwise stated.  
4. Line Voltage maintained at 117 volts for voltage readings.  
5. All controls set for normal operation; no signal applied.

RESISTANCE MEASUREMENTS

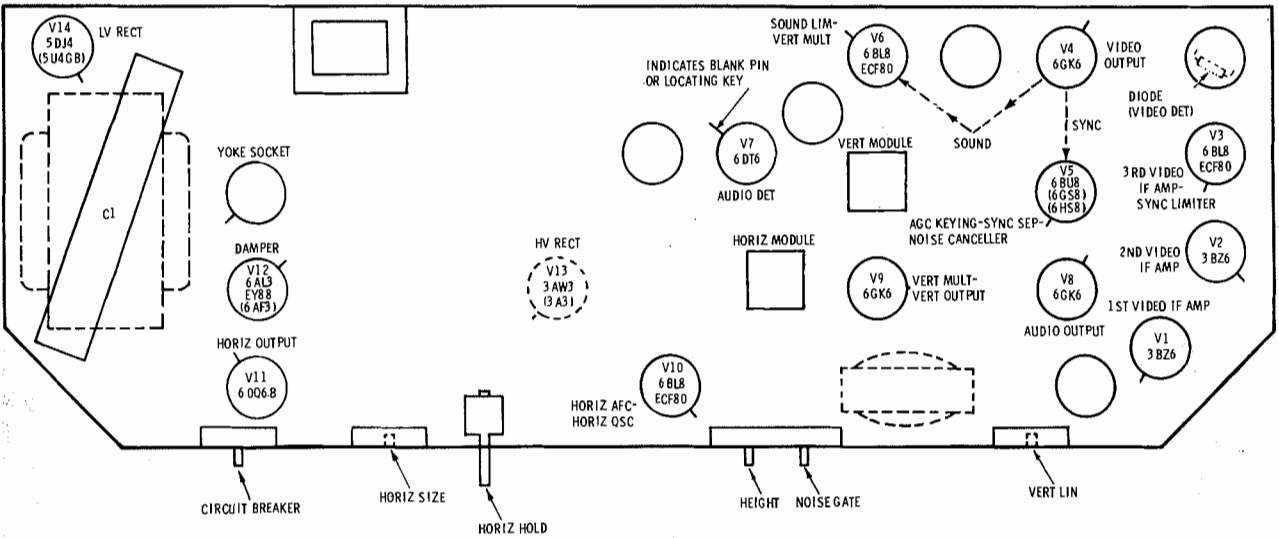
ITEM	TUBE	Pin 1	Pin 2	Pin 3	Pin 4	Pin 5	Pin 6	Pin 7	Pin 8	Pin 9
V1	3BZ6	680K	68Ω	FIL	FIL	♦1000Ω	♦1000Ω	0Ω		
V2	3BZ6	100K	120K	FIL	FIL	†1100Ω	†1100Ω	100K		
V3	ECF80 6BL8	†16K	.1Ω	†6300Ω	FIL	FIL	†6300Ω	150Ω	0Ω	56K
V4	6GK6	3.4Ω	2000Ω	0Ω	FIL	FIL	TP	†5700Ω	†6000Ω	0Ω
V5	6BU8	†3000Ω	†82Ω	2.6meg	FIL	FIL	†41K	†2.3meg	†3.2meg	†3.7meg
V6	ECF80 6BL8	†4.4meg	820K	†155K	FIL	FIL	†155K	0Ω	0Ω	725K
V7	6DT6	2.8Ω	560Ω	FIL	FIL	†2meg	†6000Ω	560K		
V8	6GK6	270Ω	120Ω	0Ω	FIL	FIL	NC	†610Ω	†5700Ω	0Ω
V9	6GK6	360Ω	1meg	0Ω	FIL	FIL	NC	†650Ω	†230Ω	0Ω
V10	ECF80 6BL8	†220K	600K	†5700Ω	FIL	FIL	†47K	2700Ω	0Ω	390K
V11	6DQ6B	TP	FIL	NC	†9500Ω	1meg	TP	FIL	0Ω	TOP CAP †11Ω
V12	EY88 6AL3	NC	NC	NC	FIL	FIL	NC	NC	NC	†83Ω
V13	3AW3	PINS 1 THRU 8 HAVE INFINITE RESISTANCE								TOP CAP †550Ω
V14	5DJ4	†100K	FIL	NC	20Ω	NC	20Ω	†100K	FIL	
V15	23AHP4	FIL	68K	Pin 6 0Ω	Pin 10 †820K	Pin 11 250K	Pin 12 FIL			
V201	6GK5	0Ω	3.5meg	FIL	FIL	†10K	0Ω	0Ω		
V202	ECF80 6BL8	†18K	150K	†59K	FIL	FIL	†6800Ω	0Ω	1800Ω	12K
ITEM	TUBE	Pin 1	Pin 2	Pin 3	Pin 4	Pin 5	Pin 6	Pin 7	Pin 8	Pin 9

† THIS READING WILL VARY DEPENDING UPON THE CONDITION OF THE ELECTROLYTIC IN THE CIRCUIT.  
♦ MEASURED FROM PIN 7 OR 8 OF V14.  
† MEASURED FROM TOP CAP OF V12.  
NC NO CONNECTION TP TIE POINT

TUBE PLACEMENT CHART



BOTTOM VIEW



TUBE PLACEMENT CHART

TUBE FAILURE CHECK CHART

The following chart lists tubes whose failures are most likely to produce indicated symptoms. Refer to tube placement chart for location and type of tube.

**POWER SUPPLY FAILURE**  
No raster, no sound Circuit Breaker R80

**SWEEP FAILURE**  
No raster, has sound V9, V10, V11, V12, V13, V14  
No vertical deflection V6, V9  
Poor vert. linearity or foldover V8, V9  
Poor horiz. linearity or foldover V10, V11, V12  
Narrow picture V11, V12, V14  
Vert. off freq. V6, V9  
Horiz. off freq. V10

**LOSS OF PICTURE OR SOUND**  
No pic, no sound, has raster V1, V2, V3, V1  
No pic, no sound, has snow V201, V202, V1  
No pic, has sound, has raster V4, V15  
Has pic, no sound V6, V7, V8  
Overloaded picture V5

**SYNC FAILURE**  
No vert. sync V5, V3  
No horiz. sync V5, V3  
No vert. or horiz. sync V5, V3

MOTOROLA CHASSIS  
584, 584Y SERIES

FOLDER 1

## ALIGNMENT INSTRUCTIONS

## PRE-ALIGNMENT INSTRUCTIONS

The High Voltage lead should be securely taped and kept away from the chassis.

Allow a 20 minute warm-up period for the receiver and test equipment.

**Suggested Alignment Tools:** A1 thru A13 ..... GENERAL CEMENT #8282, 8606, 8606L, 9295, 9440

WALSCO #2528, 2543, 2544, 2545

Mixer Plate Coil ..... GENERAL CEMENT #9296, 9297



WALSCO #2546, 2547

VIDEO IF ALIGNMENT

Disable oscillator grid by removing a pin from a test tube.

Use only enough generator output to provide a usable indication.

Connect variable bias to IF AGC line at point **(A)**. Adjust bias to obtain response curve which shows no indication of overloading.

	SWEEP GENERATOR COUPLING	SWEEP GENERATOR FREQUENCY	MARKER GENERATOR FREQUENCY	CHANNEL	CONNECT VTVM	ADJUST	REMARKS
1.	High side to ungrounded tube shield over Mixer-Osc. Low side to chassis		39.75MC	Any non-interfering channel	Connect DC probe of VTVM thru a 47K resistor to point  . Common to ground.	A1	Adjust for MINIMUM.
2.	"		41.25MC	"	"	A2	Adjust for MINIMUM.
3.	"		47.25MC	"	"	A3	Adjust for MINIMUM.
4.	Connect high side to pin 2 (grid) of V3. Low side to ground.	44MC (10MC Sweep)	41.25MC 43.25MC 45.75MC	"	CONNECT SCOPE Connect Vert. Amp. of scope to point  . Low side to ground.	A4, A5	Adjust for maximum gain and symmetry with markers as shown in Fig. 1.
5.	High side to ungrounded tube shield over Mixer-Osc. Low side to chassis	"	39.75MC 41.25MC 42.25MC 43.1MC 45.15MC 45.75MC 47.25MC	"	"	A6, A7, A8, & Mixer Plate Coil	Adjust for maximum gain and bandwidth with markers as shown in Fig. 2.

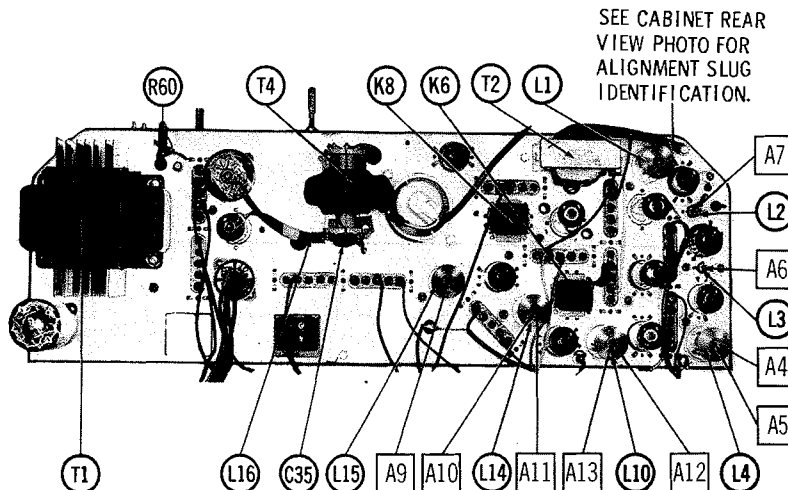
SOUND IF ALIGNMENT

Tune in a strong TV signal and adjust controls for normal sound and picture. Connect the DC probe of a VTVM to point .

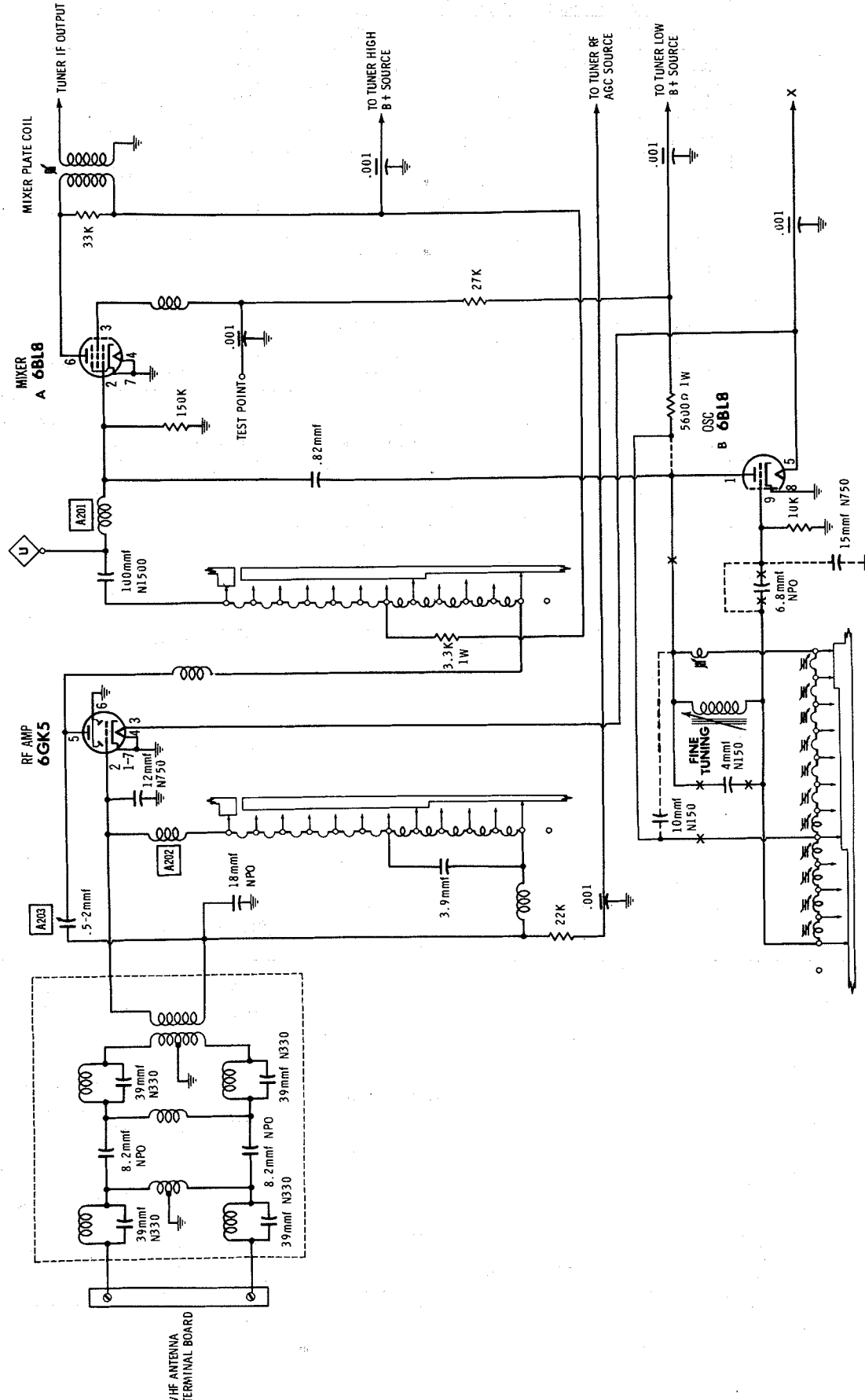
Common to ground. Adjust A8 for maximum of the two possible maximum tuning points. Use the one giving the largest voltage reading. Disconnect the antenna from terminal to produce a hiss in the sound. Adjust A10, A11, A12 and A13 for maximum undistorted sound.

#### 4.5MC TRAP ALIGNMENT

Tune in a strong TV signal and set Contrast control at maximum. Adjust the Fine Tuning until a beat pattern is visible. Adjust AL4 for MINIMUM beat interference.



### CHASSIS—TOP VIEW



**CHANNEL SELECTOR SWITCH SHOWN IN CHANNEL 13 POSITION**

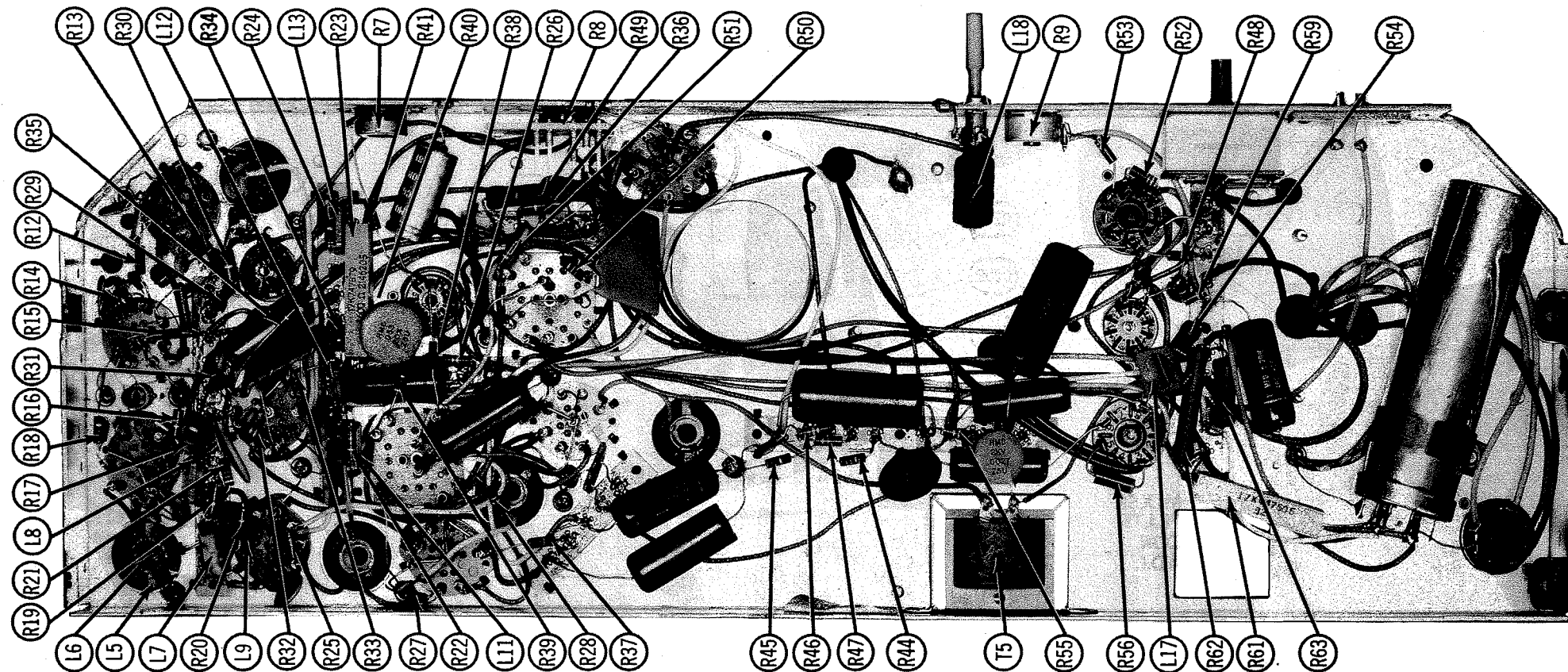
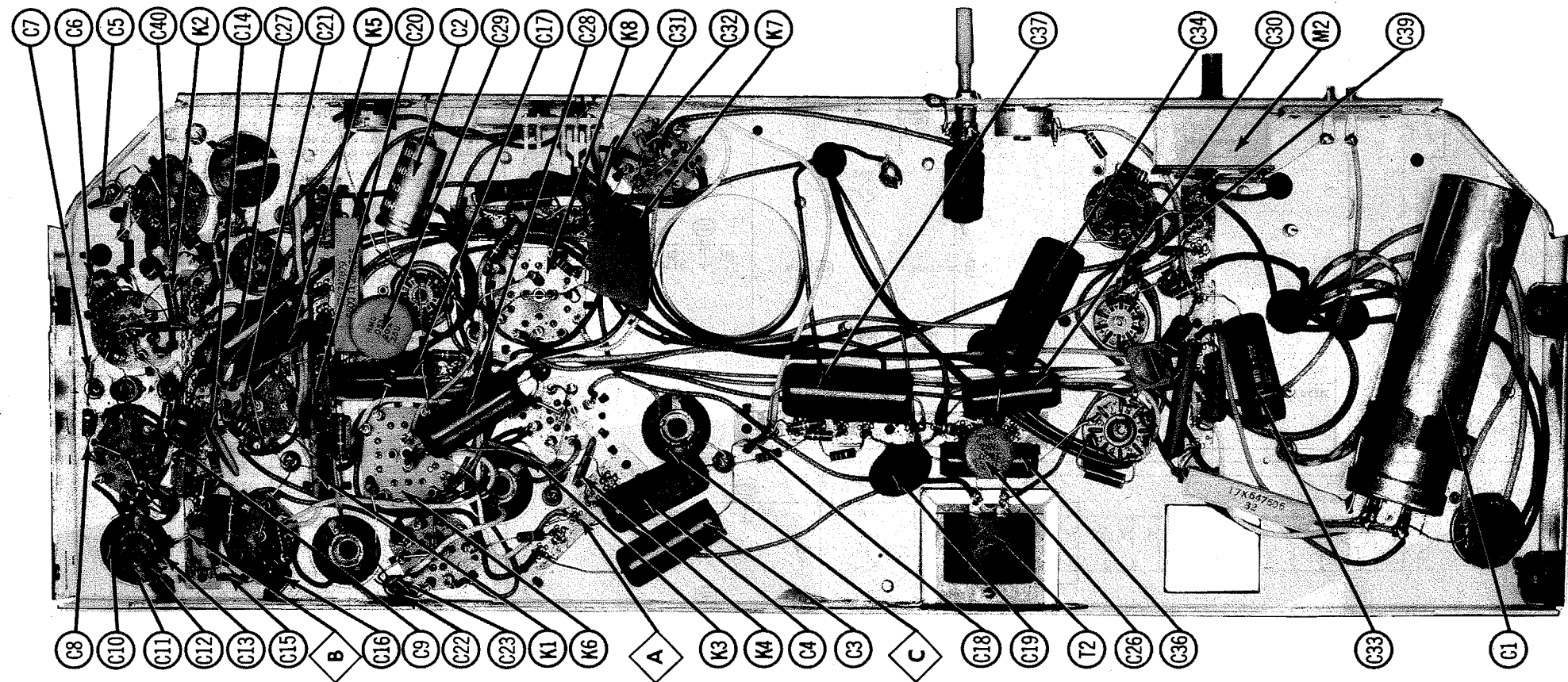
113 POSITION WAFER-TYPE VHF TUNER WTT-319

**MOTOROLA CHASSIS  
584, 584Y Series**

A PHOTOFACT STANDARD NOTATION SCHEMATIC  
©Howard W. Sams & Co., Inc. 1963

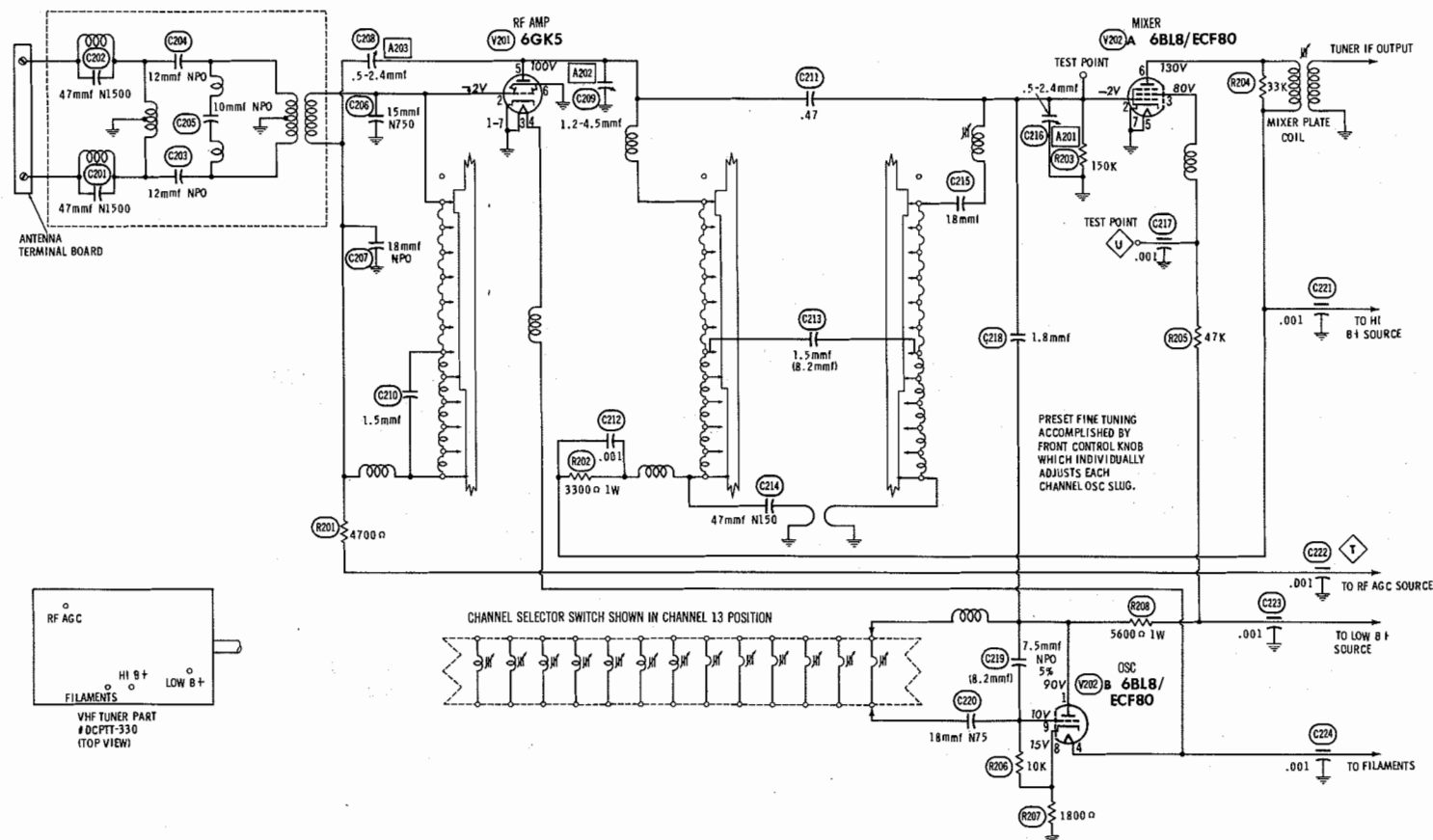
# FOLDER 1





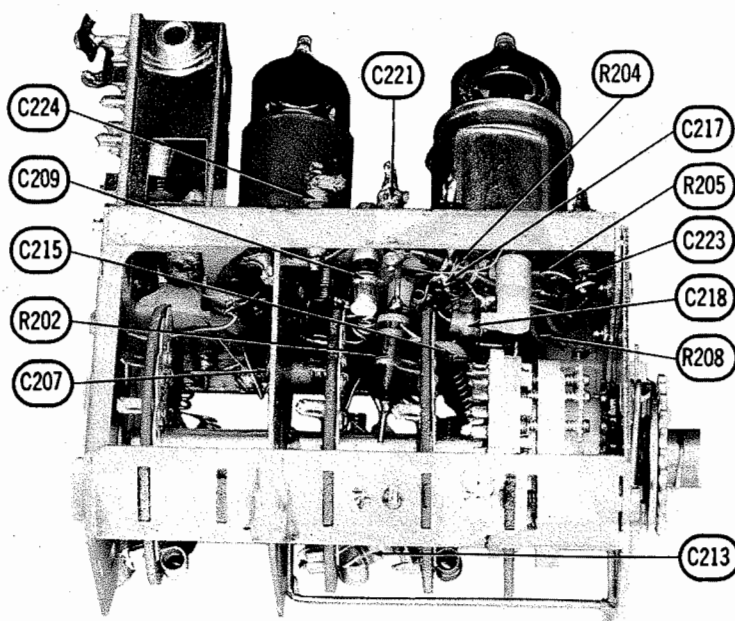
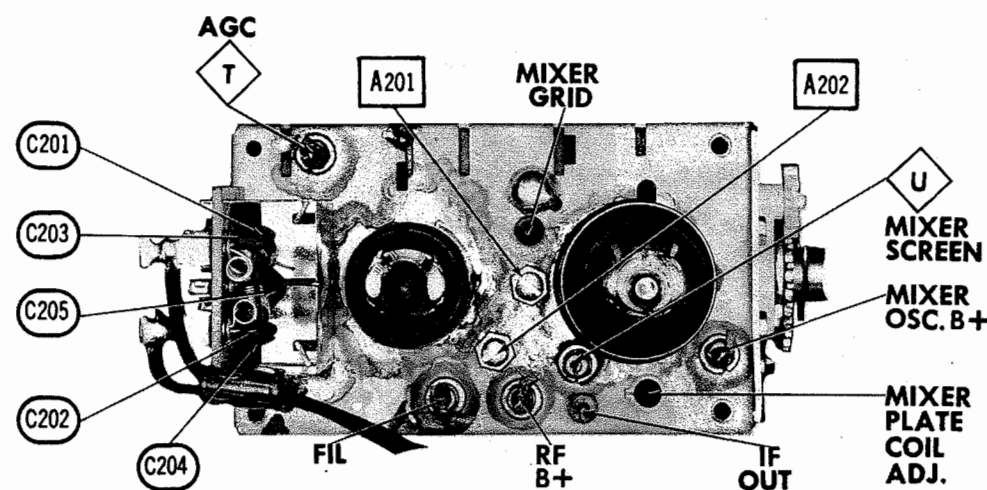
# MOTOROLA CHASSIS 584, 584Y Series

FOLDER 1



A PHOTOFAC STANDARD NOTATION SCHEMATIC  
©Howard W. Sams & Co., Inc. 1963

## 13 POSITION WAFER-TYPE VHF TUNER CPTT-330, DCPTT-330, ACPTT-331



TUNER DCPTT-330

## VHF TUNER ALIGNMENT INSTRUCTIONS

### PREALIGNMENT INSTRUCTIONS

The High Voltage lead should be securely taped and kept away from the chassis. Allow a 20 minute warm-up period for the receiver and test equipment.

### VHF OSCILLATOR ADJUSTMENT TUNERS TT/WTT-320Y, PTT/SPTT-322Y, WTT-319, PTT-322


Set Fine Tuning to center of its range. Starting with highest channel in area, adjust the appropriate oscillator screw for best picture and sound.

### VHF OSCILLATOR ADJUSTMENT TUNERS DPTT/CPTT-330, ACPTT-331, STT327/329, SPTT-333, ASPTT-334

Set Fine Tuning to center of its range. Adjust the overall oscillator screw for best picture and sound. If the Fine Tuning control will not bring desired results, compress or expand coils or bend tabs to compensate.

### VHF RF AND MIXER ALIGNMENT

Connect the synchronized sweep voltage from the sweep generator to the horizontal input of the oscilloscope for horizontal deflection. Use only enough generator output to provide a usable indication. Use 10MC sweep unless otherwise noted. Connect variable bias to IF AGC line. Adjust bias to obtain response curve which shows no indication of overloading.

SWEEP GENERATOR COUPLING	SWEEP GENERATOR FREQUENCY	MARKER GENERATOR FREQUENCY	CHANNEL	CONNECT SCOPE	ADJUST	REMARKS
Across antenna terminal with 120Ω Resistor in each lead.	213MC	211. 25MC 215. 75MC	13	Vert. Amp. thru Demodulator Probe to Point  . Low side to chassis.	A201, A202	Adjust for maximum gain and symmetry of response similar to Fig. 201 with markers as shown. Coils not containing adjustable cores are adjusted by expanding or compressing coil turns.
	207MC	205. 25MC 209. 75MC	12			
	201MC	199. 25MC 203. 75MC	11			
	195MC	193. 25MC 197. 75MC	10			
	189MC	187. 25MC 191. 75MC	9			
	183MC	181. 25MC 185. 75MC	8			
	177MC	175. 25MC 179. 75MC	7			
	85MC	83. 25MC 87. 75MC	6			
	79MC	77. 25MC 81. 75MC	5			
	69MC	67. 25MC 71. 75MC	4			
	63MC	61. 25MC 65. 75MC	3			
						A203

SOUND VIDEO




FIG. 201

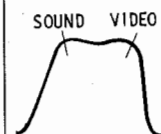
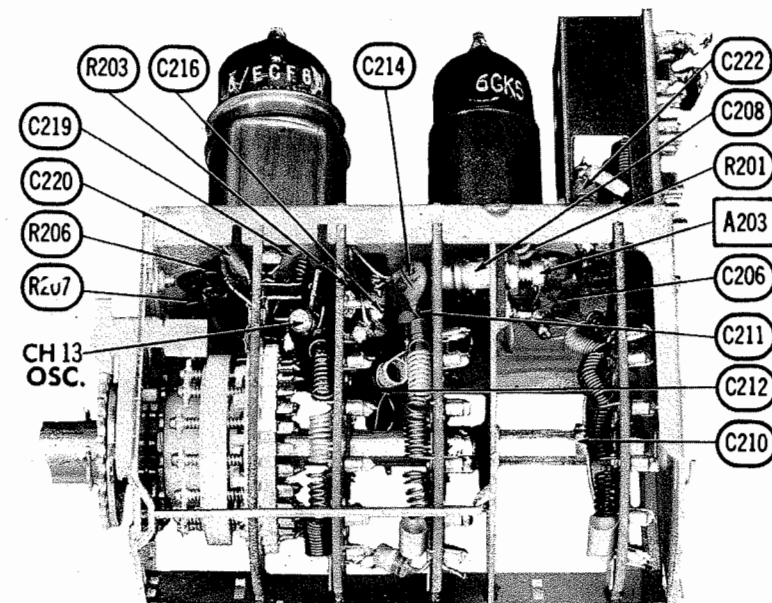
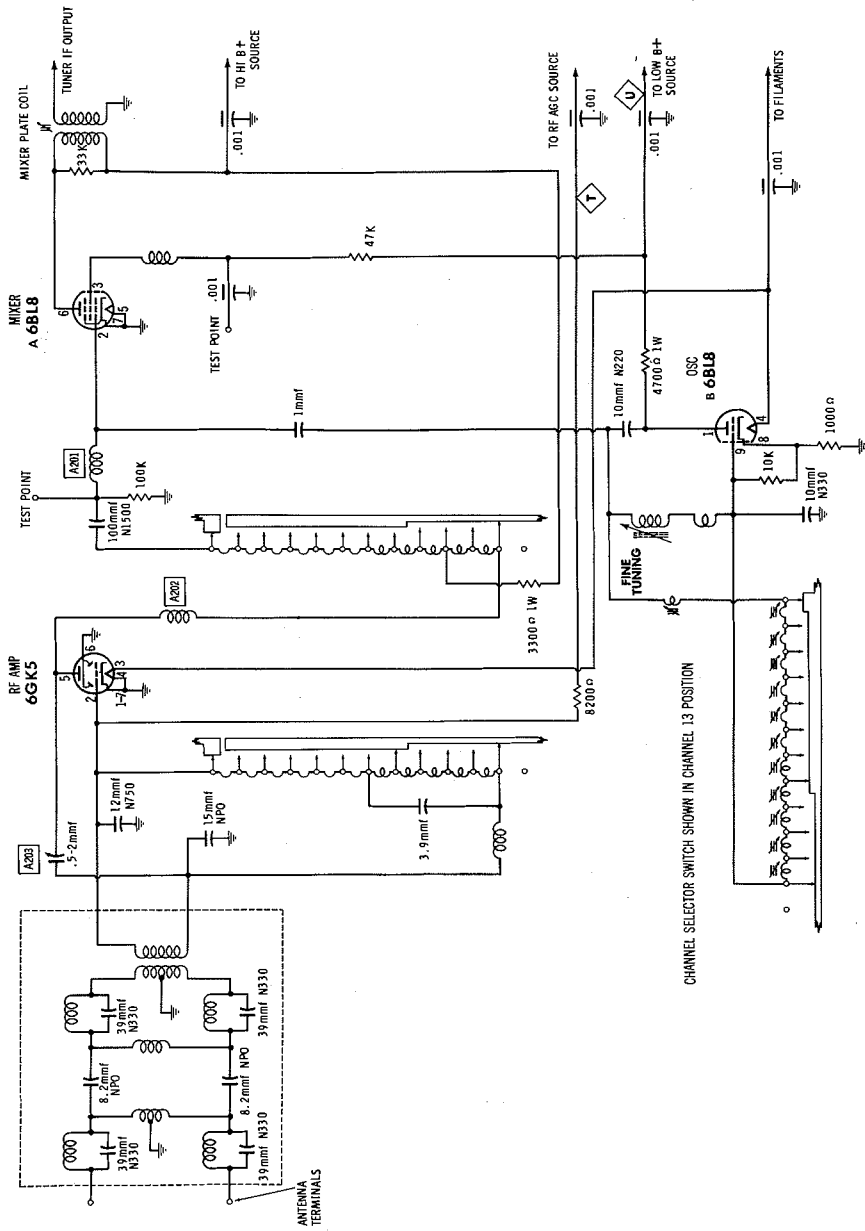


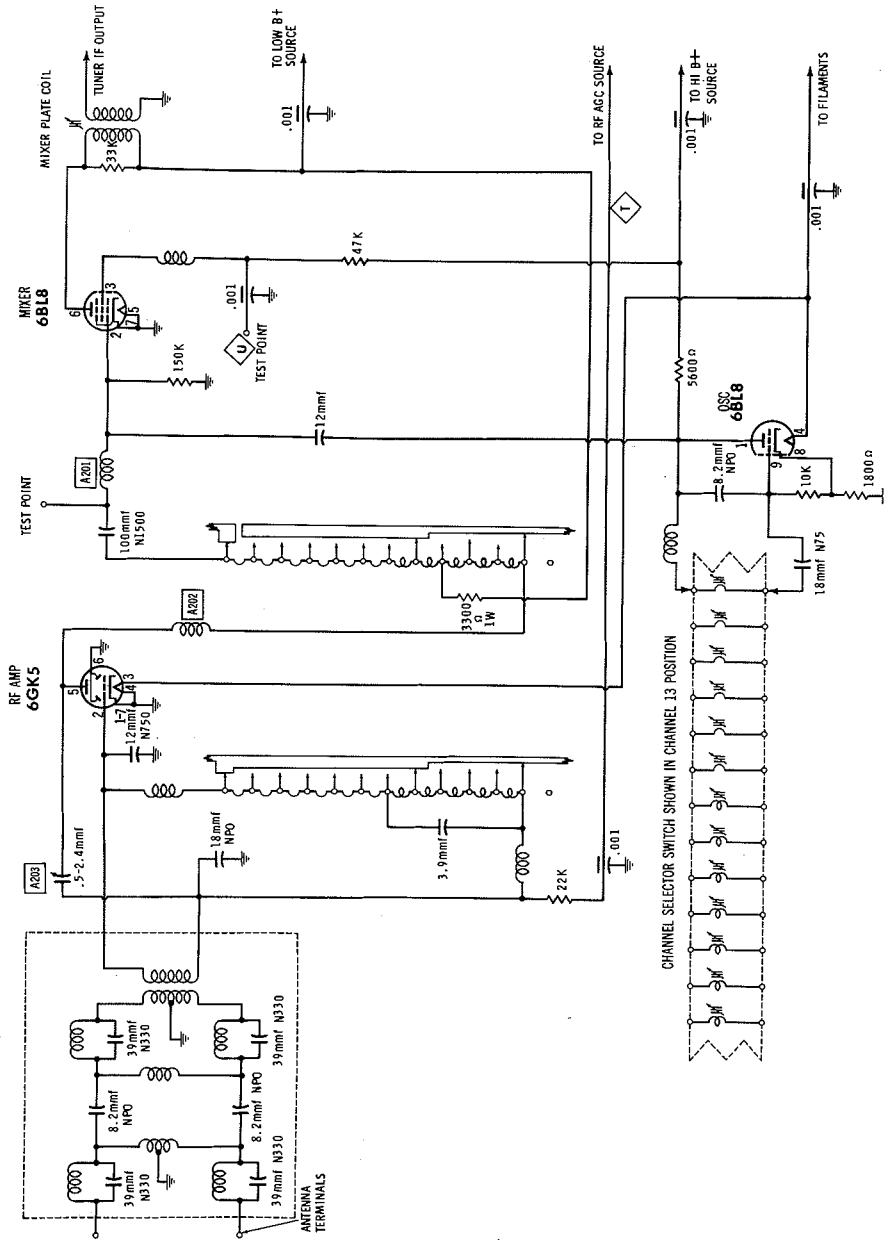
FIG. 201





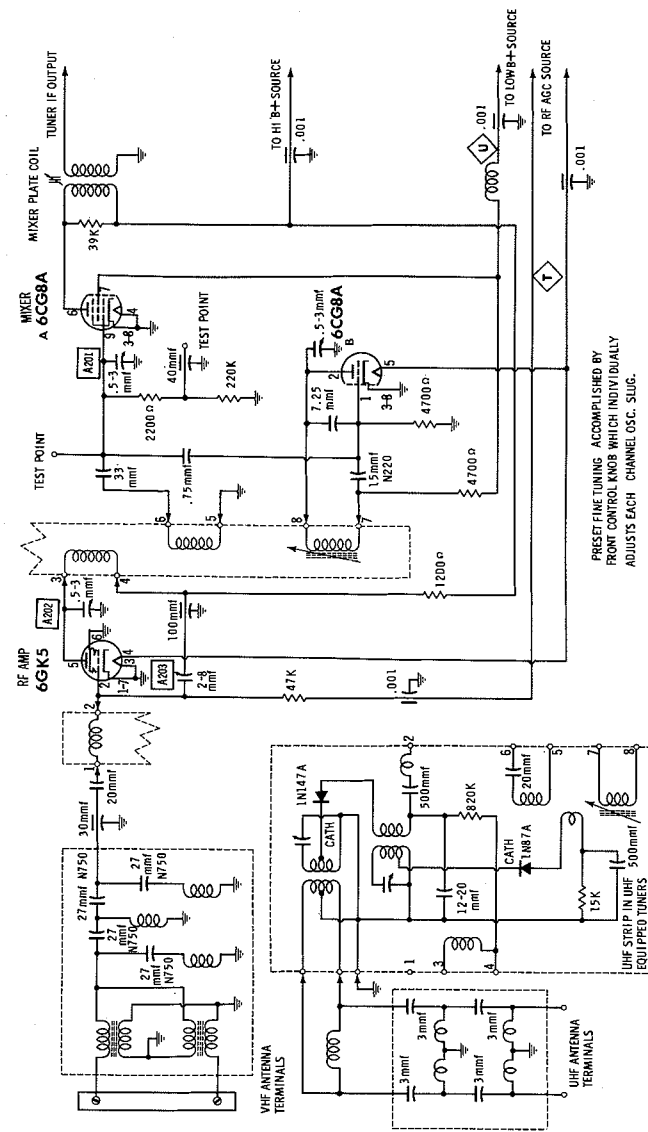
A PHOTOFACT STANDARD NOTATION SCHEMATIC  
©Howard W. Sams & Co., Inc. 1963

13 POSITION WAFER-TYPE VHF TUNER STT-327



A PHOTOFACT STANDARD NOTATION SCHEMATIC  
©Howard W. Sams & Co., Inc. 1963

13 POSITION WAFER-TYPE VHF TUNER CPTT-329

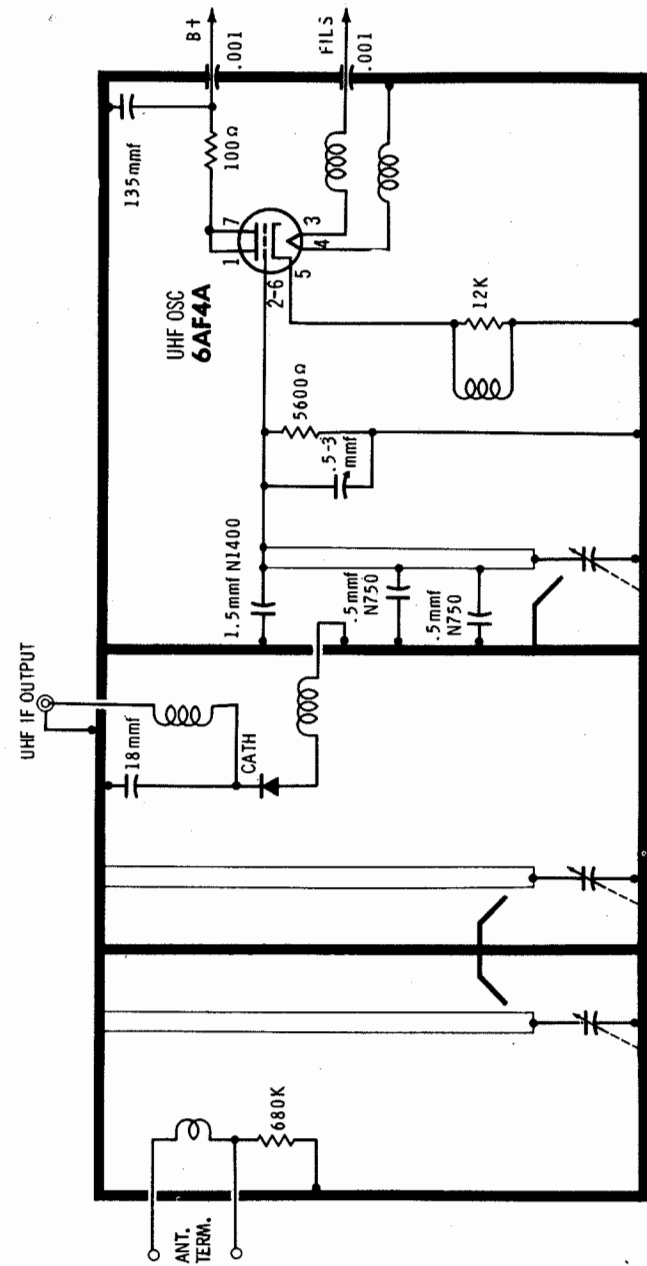
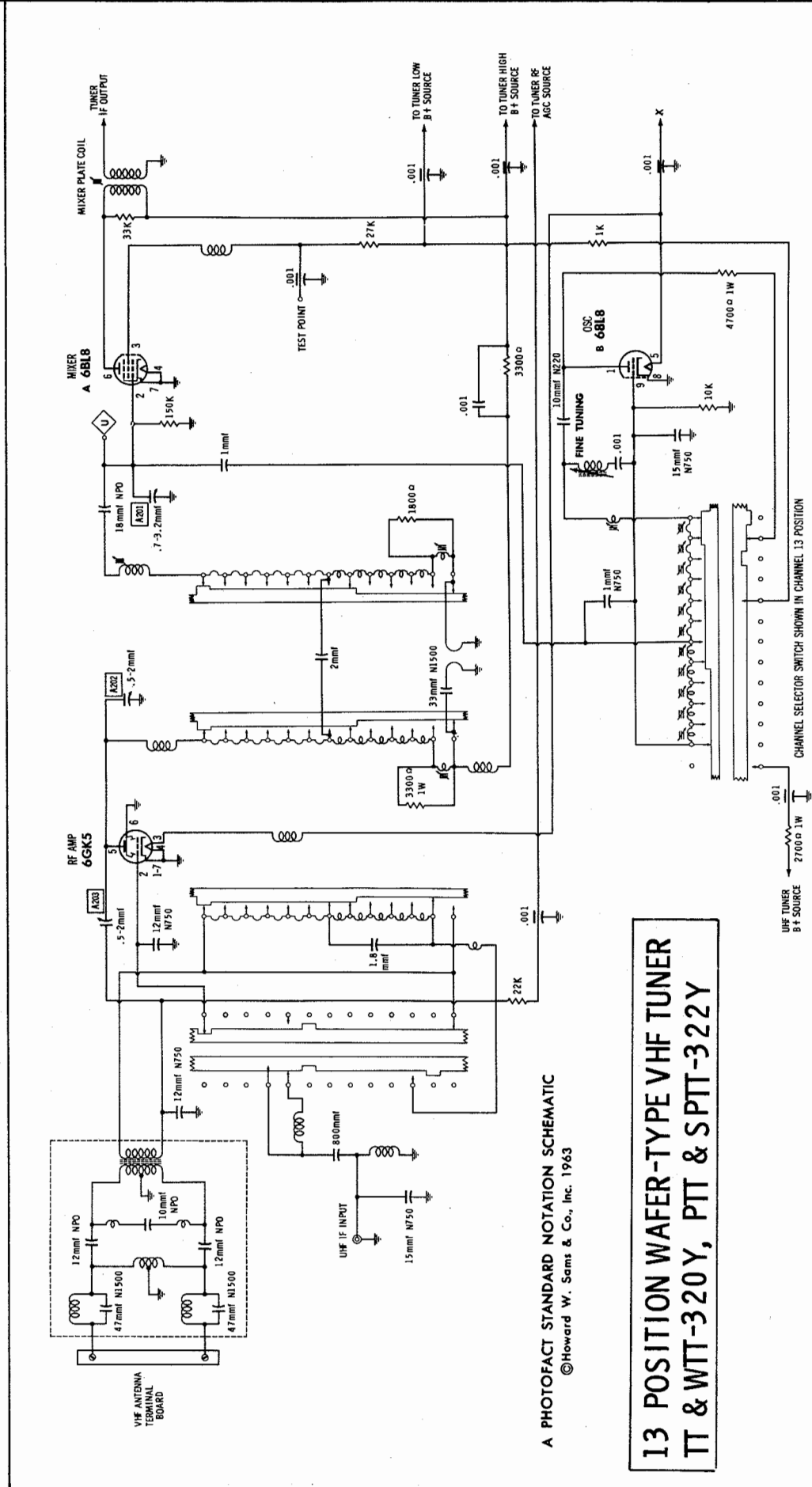
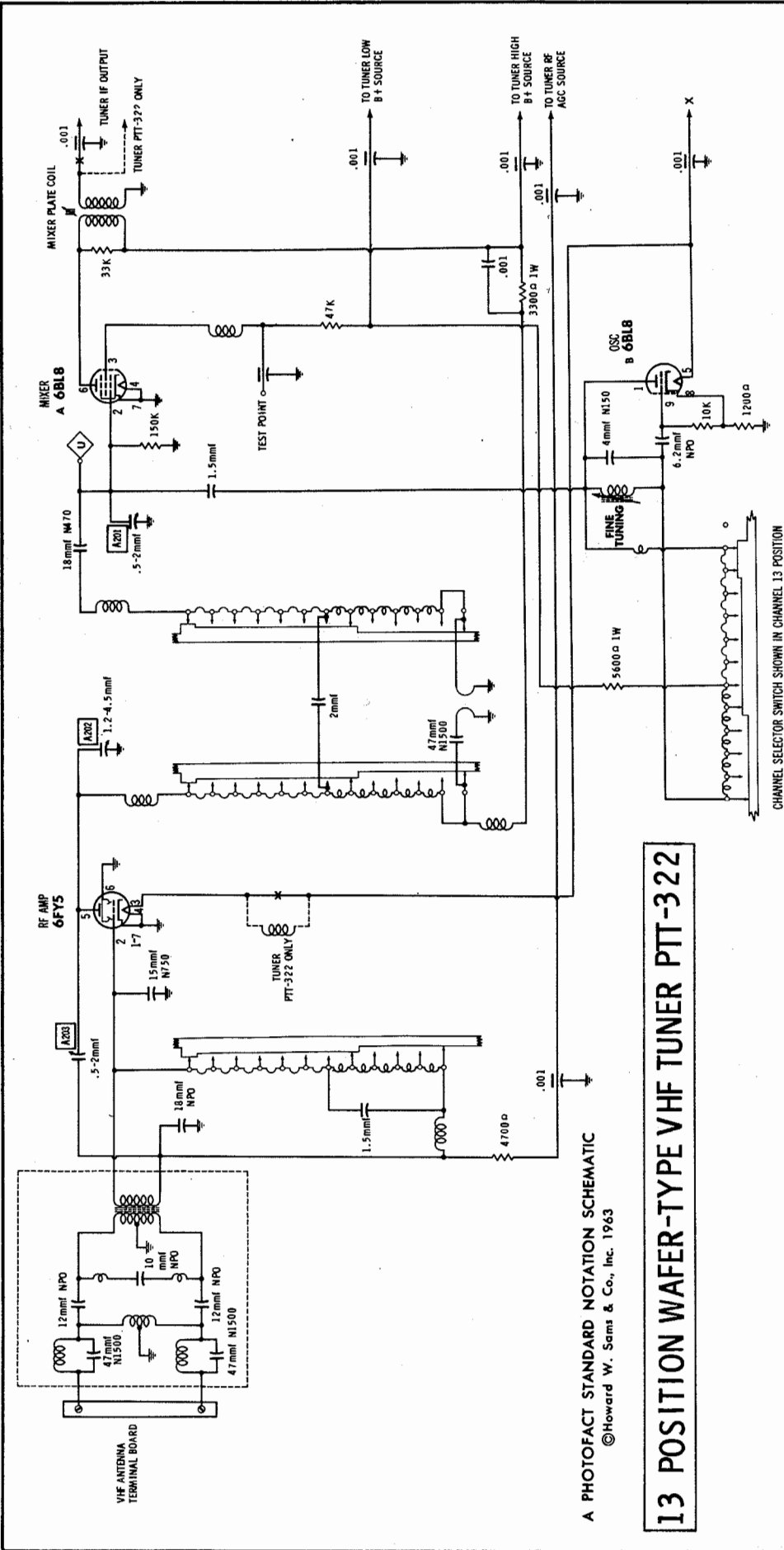


A PHOTOFACT STANDARD NOTATION SCHEMATIC  
©Howard W. Sams & Co., Inc. 1963

13 POSITION TURRET-TYPE VHF TUNER SPTT-333, ASPTT-334

MOTOROLA CHASSIS  
584, 584Y Series

FOLDER 1



MOTOROLA CHASSIS  
584, 584Y Series

FOLDER 1



Replacement parts shown may be superseded by the availability of newly introduced replacements. Have your local distributor check Sams COUNTER FACTS for the most up-to-date replacement.

ITEM No.	PART NAME	MOTOROLA PART No.	NOTES
M1	VHF Tuner VHF Tuner	DCPTT-330 WTT-320Y	23K76 Series, 23T16 Series Y23K76 Series, Y23K82 Series, Y23K83 Series, Y23K84 Series, Y23T15 Series, Y23T16 Series
	VHF Tuner VHF Tuner VHF Tuner VHF Tuner VHF Tuner VHF Tuner VHF Tuner VHF Tuner VHF Tuner VHF Tuner UHF Tuner	CPPT-329 CPPT-330 TT-320Y SPTT-333 SPTT-322Y WTT-319 STT-327 ACPTT-331 PTT-322 PTT-322Y ASPTT-334 LTT-601  KIT-601	23K82 Series, 23K83 Series, 23K84 Series 23K87 Series, 23K88 Series Y23K87 Series, Y23K88 Series 23K90 Series, 23K91 Series, 23K95 Series, 23K96 Series Y23K90 Series, Y23K91 Series, Y23K95 Series, Y23K96 Series Model 23T15BRA Model 23T15BR/LA A23K100 Series, A23K101 Series, A23K102 Series, A23K103 Series 27K10 Series, 27K11 Series Y27K10 Series, Y27K11 Series A23K100 Series, A23K101 Series, A23K102 Series, A23K103 Series Y23K76 Series, Y23K82 Series, Y23K83 Series, Y23K84 Series, Y23K87 Series, Y23K88 Series, Y23T15 Series, Y23T16 Series Y23K90 Series, Y23K91 Series, Y23K95 Series, Y23K96 Series, Y27K10 Series, Y27K11 Series Off-On, Models FTS-584 and Y Off-On, Models GTS-584 and Y
M2	Switch Switch Circuit Breaker	40D68094A04 40D68094A01 80C86390A01	

High Voltage Lead .....	Use BELDEN No.	8689 (17KV) or 8688 (25KV)
Shielded Hook-up Wire .....	Use BELDEN No.	8885 (Single Conductor)
		8738 (Two Conductor)
General-use Unshielded Hook-up Wire .....	Use BELDEN No.	8530 (Solid) Available in 12 Colors
		8524 (Stranded) Available in 12 Colors
Power Cord (Interlock Type) .....	Use BELDEN No.	8874 (Rubber) or 8895 (Plastic)
300Ω Tuner Input Lead .....	Use BELDEN No.	8225
300Ω Antenna Lead-in .....	Use BELDEN No.	8230 or 8275
Antenna Rotor Cable .....	Use BELDEN No.	8484 (Flat) or 8484 (Round) - 4 Conductor
		8485 (Round) - 5 Conductor
		8488 (Round) - 8 Conductor

* AMPEREX *		* GENERAL ELECTRIC *		* RCA *		* RAYTHEON *		* SYLVANIA *	
ITEM No.	USE	TYPE		ITEM No.	USE		TYPE		
V201	RF Amp.	6GK5		V202	Mixer - Osc.		6BL8/ECF80		

ITEM No.	RATING	REMARKS	REPLACEMENT DATA						
			AEROVOX PART No.	CENTRALAB PART No.	CORNELL- DUBILIER PART No.	ELMENCO PART No.	MALLORY PART No.	SPRAGUE PART No.	
C201	47 N1500	(8.2) †		TCL-47		*			
C202	47 N1500			TCL-47		*			
C203	12 NPO		NPO-DI 10	DTZ-10		*		10TCC-Q12	
C204	12 NPO		NPO-DI 10	DTZ-10		*		10TCC-Q12	
C205	10 NPO		NPO-DI 10	DTZ-10	C10Q1C	CCTO-100	CNO-410	10TCC-Q10	
C206	15 N750		N750-DI 15	DTN-15	C10Q15U	CCTN-150	CN7-415	10TCU-Q15	
C207	18 NPO		NPO-DI 20	DTZ-20	C10Q18C	CCTO-180	CNO-418	10TCC-Q18	
C208	5-2.4			829-3			CV-1	CT565	
C209	1.2-4.5			829-6			CV-3	CT552	
C210	1.5		NPO-SI 1.5	TCZ-IR5	C10V15C			CNO-515	10TCC-V15
C211	.47		NPO-SI .5	TCZ-R5					
C212	.001		BPD-.001	DD-102	BYA10D2	CCD-102	GP20	10TS-D10	
C213	1.5		NPO-SI 1.5	TCZ-IR5	C10V15C			CNO-515	10TCC-V15
C214	47 N150								
C215	18		NPO-DI 20	DD-180	L10Q18	CCTO-180	CNO-418	10TCC-Q18	
C216	5-2.4			829-3			CV-1	CT565	
C217	.001		EF-.001	MFT-1000					
C218	1.8		NPO-SI 2	TCZ-IR5	C10V15C	CCF-102	CT280A	10TS-D10	
C219	7.5 NPO 5%							CNO-515	10TCC-V18
C220	18 N75					*			
C221	.001		EF-.001	MFT-1000		CCF-102	CT280A		
C222	.001		EF-.001	MFT-1000		CCF-102	CT280A		
C223	.001		EF-.001	MFT-1000		CCF-102	CT280A		
C224	.001		EF-.001	MFT-1000		CCF-102	CT280A		

All wattages 1/2 watt, or less, unless otherwise listed.

ITEM No.	RATING	REPLACEMENT DATA			ITEM No.	RATING	REPLACEMENT DATA			
		IRC PART No.	WORKMAN PART No.	REMARKS			IRC PART No.	WORKMAN PART No.	REMARKS	
R201	4700Ω				R205	47K				
R202	3900Ω				1W	R206				10K
R203	150K					R207				1800Ω
R204	33K					R208				5000Ω 1W

NAME	PART NO.	MODELS
Safety Glass (Tinted)	61D6855A02	All Series except 27K10A and 27K1A Series
Safety Glass (Tinted)	35B6841A01	27K10A, 27K1A Series
Bezel (Bronze)	13E66407A11	23K876A, 23K82M, W, 23K83MP, 23K84M, W
Bezel (Bronze)	13E66407A11	Y/23K76A, Y/23K82M, W, Y/23K83MP, Y/23K84M, W
Bezel (Tantone)	13E66407A2A	23K82B, 23K84B
Bezel (Tantone)	13E66407A23	Y/23K82B, Y/23K84B
Bezel (Bronze)	13E66407A17	23K87M, W, 23K85W
Bezel (Bronze)	13E66407A19	Y/23K87M, W, 23K85W
Bezel (Bronze)	13E6652A03	23K90, 23K91, 23K95, 23K96 Series
Bezel (Bronze)	13E66407A13	A23K100M, MD, W, WD, A23K101M, MD
Bezel (Tantone)	13E66407A14	A23K100B, BD, A23K101B, BD
Bezel (Bronze)	13E66407A15	A23K102, D, A23K103, D Series
Bezel (Bronze)	13E6652A03	23SF15, 23SF16, 23SF17, 23SF18 Series
Bezel (Gold)	13E66407A01	23T15A, L, A, 23T16A
Bezel (Gold)	13E66407A03	23T15A, L, A, Y/23T16A
Bezel (Bronze)	13E66457A01	27K10A, 27K1A Series
UHF Chan.Sel. Knob	36C66437A02	Y/23K76A, Y/23K82, Y/23K83, Y/23K84, Y/23K87, Y/23K88 Series
VHF Chan.Sel. Knob	36C66450A03	23K76A, 23K82, 23K83, 23K84 Series
VHF Chan.Sel. Knob	36D66478A01	23K87, 23K86 Series
VHF Chan.Sel. Knob	36D66682A01	23K90, 23K91, 23K95, 23K96 Series
UHF Chan.Sel. Knob	36D66682A03	Y/23K90, Y/23K91, Y/23K95, Y/23K96 Series
VHF Chan.Sel. Knob	36D65709A04	A23K100B, M, W, A23K101B, M, W, A23K102M, W, A23K103W
UHF Chan.Sel. Knob	36C66437A02	23T15A, L, 23T16A Series
VHF Chan.Sel. Knob	36D66450A03	23T15A, L, 23T16A Series
VHF Chan.Sel. Knob	36D66682A03	27K10A Series
UHF Chan.Sel. Knob	36D668072A01	Y/27K10A, Y/27K1A Series
Fine Tuning Knob	36D66449A03	Y/23K76A, Y/23K83, Y/23K83, Y/23K84, 23T15A, L, 23T16A Series
Fine Tuning Knob	36C66567A01	23K87, Y/23K87, 23K86, Y/23K86 Series
Fine Tuning Knob	36C65712A02	A23K100B, M, W, A23K101B, M, W, A23K102M, W, A23K103W
Fine Tuning Knob	36C66347A01	A23K100BD, MD, WD, A23K101BD, MD, WD, A23K102MD, MD, WD, A23K103WD
Volume Knob	36B6641A01	Y/23K76A, Y/23K82, Y/23K83, Y/23K87, Y/23K88, A23K100/D, A23K101/D, A23K102/D, A23K103/D, A23T15A/L, 23T16A Series
Volume Knob	36B6641A04	23K84, Y/23K84 Series
Volume Knob	36D66682A03	23K90, 23K91, 23K95, 23K96 Series
Volume Knob	36D66685A01	Y/23K90, Y/23K91, Y/23K95, Y/23K96 Series
Brightness, Vert. Hold Knob	36K7554A00	27K10A Series
Contrast Knob	36C66073A01	27K10A, 27K1A Series
Vol. Optimizer Knob	36C66073A01	Y/27K10A, Y/27K1A Series
Volume Knob	36D66072A01	27K10A, Y/27K10A, 27K1A Series
Optimizer Knob	36C66073A03	27K10A, 27K1A Series
Tone Knob	36C66075A01	Y/27K10A, 27K1A Series
Tone Knob	36C66075A02	Y/27K10A, 27K1A Series
Cabinet Leg	15E66722A05	23K82B
Cabinet Leg	15E66722A04	23K82M
Cabinet Leg	15E66722A06	23K82W
Cabinet Leg	15E66728A05	Y/23K84B
Cabinet Leg	15E66728A04	Y/23K84M
Cabinet Leg	15E66728A08	Y/23K84W
Front Leg & Stretcher	15E66791A05	Y/23K87M
Front Leg & Stretcher	15E66791A06	Y/23K87W
Cabinet Leg, Rear	15E66791A07	Y/23K87M
Cabinet Leg, Rear	15E66791A08	Y/23K87W
Cabinet Leg	15E66722A05	A23K100B/BD
Cabinet Leg	15E66722A04	A23K100M/MD
Cabinet Leg	15E66722A06	A23K100W/WD
Cabinet Leg	15E66728A05	A23K101B/BD
Cabinet Leg	15E66728A04	A23K101M/MD
Cabinet Leg	15E66728A08	A23K101W/WD
Front Leg & Stretcher	15E66791A05	A23K102M/MD
Front Leg & Stretcher	15E66791A06	A23K102W/WD
Cabinet Leg, Rear	15E66791A07	A23K102M/MD
Cabinet Leg, Rear	15E66791A08	A23K102W/WD

PART NO.	MODEL NO.	PART NO.	MODEL NO.
1V0651IA61	Y/23K76CWA	1V0651IA61	Y/23K90W/WA
1V0651IA59	Y/23K76MA	1E060740A01	Y/25K91CW
1V0651IA60	Y/23K76WA	1E060758A01	Y/25K95M
1E060722A02	23K62B	1E060758A02	Y/25K96CW
1E060722A01	23K62M	1E060722A02	A23K100B/BD
1E060722A03	23K62W	1E060722A01	A23K100M/MD
1E060715A01	Y/23K63MP	1E060722A03	A23K100W/WD
1E060728A02	Y/23K64B	1E060728A02	A23K101B/BD
1E060728A01	Y/23K64M	1E060728A01	A23K101M/MD
1E060728A03	Y/23K64W	1E060728A03	A23K101W/WD
1E060791A01	Y/23K67M	1E060791A03	A23K102M/MD
1E060791A02	Y/23K67W	1E060791A04	A23K102W/WD
1V0651IA62	Y/23K68W	1E060472A01	Y/27K10MA
	A23K103W/WD	1E060475A01	27K11MA
1V0651IA63	Y/23K90M	1E060475A02	Y/27K11WA

Replacement parts shown may be superseded by the availability of newly introduced replacements. Have your local distributor check Sams COUNTER FACTS for the most up-to-date replacement.

◆ AMPEREX ◆			◆ GENERAL ELECTRIC ◆			◆ RCA ◆			◆ RAYTHEON ◆			◆ SYLVANIA ◆		
ITEM No.	USE	TYPE		ITEM No.	USE	TYPE		ITEM No.	USE	TYPE		ITEM No.	USE	TYPE
V1	1st Video IF Amp.	3BZ6 (3BZ6A) *		V7	Audio Detector	6DT6		V7	Audio Detector	6DT6		V7	Audio Detector	6DT6
V2	2nd Video IF Amp.	3BZ6		V8	Audio Output	6GK6		V8	Audio Output	6GK6		V8	Audio Output	6GK6
V3	3rd Video IF Amp. - Sync Limiter	6BL8/ECF80		V9	Vert. Mult. - Vert. Output	6GK6		V9	Vert. Mult. - Vert. Output	6GK6		V9	Vert. Mult. - Vert. Output	6GK6
V4	Video Output	6GK6		V10	Horiz. AFC - Horiz. Osc.	6BL8/ECF80		V10	Horiz. AFC - Horiz. Osc.	6BL8/ECF80		V10	Horiz. AFC - Horiz. Osc.	6BL8/ECF80
V5	AGC Keying - Sync Sep. - Noise Canceller	6BU8 (6GS8, 6HS8) *		V11	Horiz. Output	6DQ6B		V11	Horiz. Output	6DQ6B		V11	Horiz. Output	6DQ6B
V6	Sound Limiter - Vert. Mult.	6BL8/ECF80		V12	Damper	6AL3/EY88 (6AF3)		V12	Damper	6AL3/EY88 (6AF3)		V12	Damper	6AL3/EY88 (6AF3)
				V13	HV Rectifier	3AW3 (3A3) *		V13	HV Rectifier	3AW3 (3A3) *		V13	HV Rectifier	3AW3 (3A3) *
				V14	LV Rectifier	5DJ4 (5U4B) *		V14	LV Rectifier	5DJ4 (5U4B) *		V14	LV Rectifier	5DJ4 (5U4B) *

ITEM No.	REPLACEMENT DATA					NOTES
	MOTOROLA PART No.	GENERAL ELECTRIC PART No.	RCA PART No.	RAYTHEON PART No.	SYLVANIA PART No.	
V15	23AHP4 27VP4	23AHP4 ①	23AHP4 ① 27VP4 ①	27VP4 ②	23AHP4 ② 27VP4 ②	① Aluminized ② Silver Screen "85"

ITEM No.	CURRENT RATING (Measured)	ORIGINAL Part or Type No.	RECTIFIERS		DIODES	NOTES
			RCA PART No.	SARKES TARZIAN PART No.		
X1		48C85837A02				Crystal Diode Video Detector Alternate 48C85837A01

ITEM No.	RATING		REPLACEMENT DATA						
	CAP.	VOLT.	MOTOROLA PART No.	AEROVOX PART No.	CORNEILL DUBILIER PART No.	GENERAL ELECTRIC PART No.	MALLORY PART No.	PYRAMID PART No.	SPRAGUE PART No.
C1A	▲ 100	400	23C65807A04	AFH4-94-88	D0370	XC4-42	FP376	TMT3799	TVLS-4683-8
B	■ 800	400			BR100-450		TC7805	TD-100-450	
C	▲ 100	400							
D	▲ 30	400							
C2	220	20	23C65808A06	PRSL20	BR2502	QTI-28	TC50025	TD-250-25	TVA-1208

ITEM No.	RATING	REMARKS	REPLACEMENT DATA					
			AEROVOX PART No.	CENTRALAB PART No.	CORNELL- DUBILIER PART No.	ELMENCO PART No.	MALLORY PART No.	SPRAGUE PART No.
C3	.25 100V 10%	#2IR129194	BE2P25		PM2525	2CP-5-254	GEM-2025	2TM-P25
C4	.25 50V		P268N-25		CUB2P25	2CP-5-254	GEM-2025	2TM-P25
C5	.580 10%		DI-560	DD-561		CCD-561	GP456	10TS-T56
C6	.560 10%		DI-580	DD-561		CCD-561	GP356	10TS-T56
C7	.470 10%		DI-470	DD-471		CCD-471	GP347	10TS-T47
C8	.001 10%		DI-1000	DD-102		CCD-102	GP210	10TS-D10
C9	.800 10%		DI-820			CCD-801		10TS-T80
C10	5.6 N150 10%							
C11	4.7 10%							
C12	3.9 10%							
C13	5.6 10%							
C14	.02 10%							
C15	.001 10%							
C16	.05 600V							
C17	.05 600V							
C18	.56 N750							
C19	.01 2000V							
C20	4.70 2000V							
C21	2.4 NPO ±.25mmf							
C22	5.6 N750							
C23	.001 10%							
C24	.0015							
C25	.0015							
C26	.0027 2000V							
C27	.022 600V							
C28	.3 600V 10%							
C29	.033							
C30	.05 600V 10%							
C31	.005							
C32	.470 10%							
C33	.1 400V							
C34	.1 600V							
C35	.240 2000V N1500							
C36	.05 600V 10%							
C37	.1 600V							
C38	.05 600V 10%							
C39	.1 600V							
C40	.1 600V							
C41	.1 600V							
C42	.1 600V							
C43	.1 600V							
C44	.1 600V							
C45	.1 600V							
C46	.1 600V							
C47	.1 600V							
C48	.1 600V							
C49	.1 600V							
C50	.1 600V							
C51	.1 600V							
C52	.1 600V							
C53	.1 600V							
C54	.1 600V							
C55	.1 600V							
C56	.1 600V							
C57	.1 600V							
C58	.1 600V							
C59	.1 600V							
C60	.1 600V							
C61	.1 600V							
C62	.1 600V							
C63	.1 600V							
C64	.1 600V							
C65	.1 600V							
C66	.1 600V							
C67	.1 600V</							

SET 622 FOLDER 1

**FOLDER 1**

Replacement parts shown may be superseded by the availability of newly introduced replacements. Have your local distributor check Sams COUNTER FACTS for the most up-to-date replacement.

ITEM No.	RATING	REMARKS	REPLACEMENT DATA					
			AEROVOX PART No.	CENTRALAB PART No.	CORNELL- DUBILIER PART No.	ELMECO PART No.	MALLORY PART No.	SPRAGUE PART No.
C38	100 3000V N750 10%	#2IR122082 Note 1						
C39	470		BPD-00047	DD-471	BYA10T47	CCD-471	B-347	10TS-T47
C40	980		BPD-00058	DD-981	BYA10T98	CCD-981	B-368	10TS-T98

# Motorola Part Number                      Note 1. Value varies. Replace with original.  
\* Not normally in distributor's stock. Available thru distributor on order to manufacturer.

All wattages 1/2 watt. or less, unless otherwise listed.

ITEM No.	USE	RESISTANCE	REPLACEMENT DATA				
			MOTOROLA Part No.	CENTRALAB Part No.	CLAROSTAT Part No.	CTS-IRC Part No.	MALLORY Part No.
R1	Volume, Power On-Off Switch	2meg	18D65083A24 (1)	B-76, KR-1, or (F2-2meg, SU204, KR-1)	A47-2meg-Z, FS-3, SWE-12	Q13-139, 76-1, or (BU2, CF27, S81, GC) *	U55, US-26, or (UA26A, SL3500, US-41)
	Volume	2meg	18D65083A18 (2)	B-76, or (F2-2meg, SU204) *	A47-2meg-Z, FS-3	Q13-139, or (BU2, CF27, S81, DCL) *	U55, or (UA26A, SL3500)
	Volume, Power On-Off Switch	2meg	18D65083A27 (3)	B-76, KR-1, or (F2-2meg, SU204, KR-1)	A47-2meg-Z, FS-3, SWE-12	Q13-139, 76-1, or (BU2, CF27, S81, GC) *	U55, US-26, or (UA26A, SL3500, US-41)
	Volume	2meg	18D65083A28 (4)	B-76, or (F2-2meg, SU204)	A47-2meg-Z, FS-3	Q13-139, or (BU2, CF27, S81, DCL) *	U55, or (UA26A, SL3500)
	Optimizer, Volume, Power On-Off Switch	7000Ω	18D65082A23 (5)	FL-7500, FFS108, R2-2meg, RFS202, KR-1	RTV-757	(19) QJ-1452	(20) UE4364-S
	Optimizer, Volume, Power On-Off Switch	7000Ω	18D65082A24 (6)	FL-7500, FFS102, R2-2meg, RFS11, KR-1	RTV-756	(21) QJ-1474	(22) UE4363-S
	Tone, Volume, Power On-Off Switch	1meg	18D65082A08 (7)	F2-1meg, FFS101, RPS-68		(23) QJ-1475	(24) UE4362-S
		2meg					
R2	Brightness	100K	18D65216A26 (1)				
	Brightness	100K	18D65216A10 (8)	B-40, or (F1-100K, SN010)	B47-100K-S	B11-128, TM4, or (BU1, CF13, S88) *	TA15L, or (RU15L, SL-37, SN1000)
	Brightness	100K	18D65083A33 (9)	B-40, or (F1-100K, SN010)	B47-100K-S	Q11-128, or (BU2, CF13, S81, DCL) *	U41, or (UA15L, SL3500)
	Brightness	100K	18D65216A40 (3), (4)				
	Brightness	100K	18D65216A17 (10)	B-40, or (F1-100K, SU204)	A47-100K-S, KSS-3	B11-128, TM5, or (BU1, CF13, S81, DCL) *	TA15L, or (U41)
	Brightness	100K	18D65083A30 (11)	B-40, or (F1-100K, SU204)	A47-100K-S, KSS-3	Q11-128, or (BU2, CF13, S81, DCL) *	U41, or (UA15L, SL3500)
R3	Tone	1meg	18D65216A27 (12)	TT-70 ↑	B47-1meg-Z	B13-137, TM4, or (BU1, CF26, S88) *	PTA1254L, or (RU16L, SL-37, SN1000)
	Tone	1meg	18D65216A37 (3), (4)	TT-70 ↑	B47-1meg-Z	B13-137, TM4, or (BU1, CF26, S88) *	PTA1254L, or (RU16L, SL-37, SN1000)
	Tone	1meg	18D65216A23 (13)	TT-70 ↑	B47-1meg-Z	B13-137, TM4, or (BU1, CF26, S88) *	PTA1254L, or (RU16L, SL-37, SN1000)
R4	Contrast	350Ω	18D65216A29 (1)				
	Contrast	350Ω	18D65216A30 (8)	TT-74 ↑		B11-103, TM4, or (BU1, CF4, S88) *	
	Contrast	350Ω	18D65216A29 (14)				
	Contrast	350Ω	18D65216A39 (3), (4)				
	Contrast, Optimizer	350Ω	18D65082A30 (15)	FL-300, FFS102, RL-7500, FFS112		(25) QJ-1497	(26) UE4284
	Contrast, Optimizer	350Ω	18D65082A21 (16)	FL-300, FFS101, RL-7500, RFS112	RTV-759	(27) QJ-1477	(28) UE4284
	Tone	1meg	18D65082A10 (2)	F2-1meg, FFS100, RL-500, RFS112	RTV-756	(29) QJ-1476	(30) UE4361
	Contrast	350Ω					
R5	Vertical Hold	750K	18D65216A53 (1)	TT-66 ↑	A47-750K-S, RN-3	B11-136, TM4, or (BU1, CF17, S88) *	PTA754L, or (RU754L, SL-37, SN1000)
	Vertical Hold	750K	18D65216A54 (17)	TT-66 ↑		B11-136, TM5, or (BU1, CF17, S81, DCL) *	RU754L, SL-36, SL3500
	Vertical Hold	750K	18D65083A31 (11)	B-66, or (F1-750K, SU204)		Q11-136, or (BU2, CF17, S81, DCL) *	RU754L, SL-38, SL3500
	Brightness	100K	18D65082A27 (18)	FL-100K, FFS101, RL-750K, RFS108		(31) QJ-1496	(32) UE4369
	Vertical Hold	750K					
	Optimizer	7000Ω	18D65216A26 (1)	TT-14 ↑		B17-116, TM4, or (BU1, CF35, S88) *	RU73A, SL-37, SN1000
R6	Optimizer	7000Ω	18D65216A38 (3), (4)	TT-14 ↑		B17-116, TM4, or (BU1, CF35, S88) *	
	Optimizer	7000Ω	18D65083A23 (2)	B-13, or (F1-7500, SU204)	A47-7500-S, FS-3	B17-116, or (BU2, CF35, S81, DCL) *	U20, or (UA14L, SL3500)
	Optimizer	7000Ω	18D65083A32 (4)	B-13, or FL-7500, SU204	A47-7500-S, FS-3	B17-116, or (BU2, CF35, S81, DCL) *	RU73A, SL-36, SL3500
R7	Vertical Linearity	500Ω	17D65820A08		39-500	U2-500-100	
R8A	Noise Gate	3.4meg	18D6401A02				
R9	Vertical Size	3.4meg					
	Horizontal Size	10K	17D65820A07				

(1) Used in Chassis ADETS, CETS, DADETS, DETS, KETS, LDETS, PCETS-584 & Y.	(6) Used in Chassis CDTS, DETS, DTS, KDTS, PCETS-584 Y.
(2) Used in Chassis GTS, HTS-584.	(7) Used in Chassis GTS, HTS-584Y.
(3) Used in Chassis ETS, FTS-584Y.	(8) Used in Chassis ADTS, CDTS, DTS, KDTS, LDETS, PCETS, RCDTS-584 & Y.
(4) Used in Chassis ETS, FTS-584.	(9) Used in Chassis DQETS-584.
(5) Used in Chassis ADTS, LADTS-584 & Y.	

(10) Used in Chassis GTS-584 & Y. (14) Used in Chassis QETS-584 & Y.  
(11) Used in Chassis QETS-584. (15) Used in Chassis QDETS-584 & Y.  
(12) Used in Chassis ADETS, DADETS, DETS, LDETS-584 & Y. (16) Used in Chassis AHTS-584, GTS, HTS-584Y  
Alternate #18D5621A23. (17) Used in Chassis AHTS, GTS, HTS-584 & Y.  
(13) Used in Chassis ADETS, DADETS, DETS, DETS-584 & Y. \* "SNAPTROL"  
Alternate #18D5621A27.

- (19) "CONCENTRIKIT" Equivalent: K-6 Kit with Base Elements and Shafts: B17-116, P22-115 (Panel), B13-139, R9-202, 76-1 (Rear)  
"SNAPTROL" Equivalent: BU5, CF35, CR22, SF12, SR14, GC.
- (20) "STA-LOC" Equivalent: FA63L, OS1500A, RU26A, IS1225, US-41.  
"CONCENTRIKIT" Equivalent: K-6 Kit with Base Elements and Shafts: B17-116, P22-103 (Panel), B13-139, R16-118, 76-1 (Rear)  
"SNAPTROL" Equivalent: BU5, CF35, CR22, SF7, SR8, GC.
- (22) "STA-LOC" Equivalent: FA63L, OS125, RU26A, IS1687, US-41.  
"CONCENTRIKIT" Equivalent: K-6 Kit with Base Elements and Shafts: B13-137, P23-103 (Panel), B13-139, R23-202 (Rear)  
"SNAPTROL" Equivalent: BU5, CF26, CR22, SF65, SR88 (File flat.) (File flat.)
- (24) "STA-LOC" Equivalent: FA16A, OS062, RUP26A.  
"CONCENTRIKIT" Equivalent: K-6 Kit with Base Elements and Shafts: B11-103, P22-103 (Panel), B17-116, R26-121 (Rear)  
"SNAPTROL" Equivalent: BU5, CF4, CR26, SF7, SR4, DC1.
- (26) "STA-LOC" Equivalent: FA35L, OS1062, RU73A, IS1750.  
"CONCENTRIKIT" Equivalent: K-6 Kit with Base Elements and Shafts: B11-103, P23-103 (Panel), B17-116, R26-121 (Rear)  
"SNAPTROL" Equivalent: BU5, CF4, CR26, SF65, SR8, DC1.
- (27) "STA-LOC" Equivalent: FA35L, OS062, RU73A, IS1750.  
"CONCENTRIKIT" Equivalent: K-6 Kit with Base Elements and Shafts: B13-137, P23-100 (Panel), B11-103, R26-121 (Rear)  
"SNAPTROL" Equivalent: BU5, CF26, CR41, SF60, SR9, DC1.
- (30) "STA-LOC" Equivalent: FA16A, OS1000A, RU52L, IS1750.  
"CONCENTRIKIT" Equivalent: K-6 Kit with Base Elements and Shafts: B11-128, P22-100 (Panel), B11-136, R9-115 (Rear)  
(Not available as a factory assembled unit.) "SNAPTROL" Equivalent: BU5, CF13, CR12, SF5, SR6, DC1.
- (32) "STA-LOC" Equivalent: FA15L, OS937A, RU754L, IS1500.

▲ Includes 3.3meg and 2.2meg Printed Resistors. † Use Poly Tube and part of original shaft.

All wattages 1/2 watt, or less, unless otherwise listed

ITEM No.	RATING	REPLACEMENT DATA			ITEM No.	RATING	REPLACEMENT DATA		
		IRC PART No.	WORKMAN PART No.	REMARKS			IRC PART No.	WORKMAN PART No.	REMARKS
R10	6800Ω 4W	PW10-5600	4G-8800	(5600Ω) * (10K, 15K) *	R37	560K	PW10-82	10W-SQ-82 3G-3000	#6C65884Q
R11	12K 2W				R38	1000Ω			
R12	1000Ω				R39	47K			
R13	68Ω				R40	150Ω 1W			
R14	15K				R41	100Ω			
R15	1000Ω				R42	560Ω			
R16	5600Ω				R43	560Ω			
R17	3300Ω 1W				R44	33K			
R18	150Ω				R45	66K			
R19	1500Ω				R46	270K			
R20	8200Ω				R47	12K			
R21	47K				R48	33K			
R22	3300Ω				R49	15K 4W			
R23	5600Ω 10W				R50	270K			
R24	2700Ω				R51	15K			
R25	330Ω				R52	470Ω			
R26	220K				R53	330Ω			
R27	820K				R54	6800Ω 2W			
R28	150K				R55	820K			
R29	100Ω				R56	6800Ω 1W			
R30	270Ω 1W	R57	3.9Ω						
R31	220K	R58	22K						
R32	180K	R59	470K						
R33	33K	R60	115Ω Cold						
R34	22K	R61	82Ω 10W						
R35	2.2meg	R62	3000Ω 4W						
R36	8200Ω 1W	R63	2700Ω 2W						

# Motorola Part Number

ITEM No.	USE	REPLACEMENT DATA					NOTES
		MOTOROLA Part No.	Merit Part No.	Miller Part No.	Stoncor Part No.	Workman Part No.	
L1A	39.75MC Trap	1V86505A48 ①					①Includes complete Assembly. ②Includes 8200Ω Resistor. ▲ Shunt with 8200Ω Resistor.
C	41.25MC Trap						
D	RF Choke						
E	47.25MC Trap						
	1st Video IF						
L2	2nd Video IF	24K747587	TV-130	6224	RTC-8555	T227A	③Includes 3300Ω Resistor. * Shunt with 3300Ω Resistor.
L3	3rd Video IF	24K751248	TV-130	6224	RTC-8555	T224	
L4	4th Video IF	24C6593A03 ①					
L5	RF Choke (8.8uh)	24C65828A12	BC-566	4611	RTC-8521	T980	④Includes 2700Ω Resistor. ▲ Shunt with 2700Ω Resistor.
L6	RF Choke (8.8uh)	24C65828A16	SW-631	4609	RTC-8915	T977	
L7	RF Choke (5uh)	24C65828A09	BC-566	4611	RTC-8521	T960	
L8	Peaking (200uh)	24C65828A12	BC-673	6154	RTC-8586	T345	
L9	Peaking (100uh)	24K754220 ②	BC-679 ▲	8112 ▲	RTC-8574 ▲	T341 ▲	
L10A	4.5MC Trap	1V86504A14 ①					
B	Sound Takeoff						
L11	Peaking (200uh)	24C65828A15 ③	BC-673 *	6154 *	RTC-8596 *	T345 *	
L12	Peaking (84uh)	24C65828A14	BC-673	6181	RTC-8596	T346	
L13	Peaking (90uh)	24C65828A11	BC-691 ▲	6157 *	RTC-8569 ▲	T358 ▲	
L14	Sound IF	1V86504A15 ①					
L15	Quadrature	1V86504A16 ①					
L18	RF Choke (6.8uh)	24C65828A17	BC-565	4610	RTC-8520	T859	
L17	RF Choke (6.8uh)	24C65828A17	BC-565	4610	RTC-8520	T859	

ITEM No.	USE	REPLACEMENT DATA							NOTES
		MOTOROLA PART No.	Merit PART No.	Miller PART No.	Stencor PART No.	Thardorson PART No.	Triod PART No.	Workmon PART No.	
L18	Horiz. Osc.	24D65832A02	TV-165	6333 ①	RTC-8629	RS-7		T111	Disregard Tap

ITEM No.	RATING			REPLACEMENT DATA				NOTES	
	PRI.	SEC. 1	SEC. 2	MOTOROLA PART No.	MERIT PART No.	STANCOR PART No.	THORDARSON PART No.		TRIAD PART No.
T1	117VAC ② 1.85A	540VCT ② .300A DC	5VAC ② 3A	25D85663A02-V	P-2885 ①	P-8356 ①	28R53 ①	R-122A ①	① Drill new mounting hole(s).
	SEC. 3	SEC. 4	SEC. 5						
	6.3VAC ④ 7.5A								

ITEM No.	USE	REPLACEMENT DATA					NOTES
		MOTOROLA Part No.	Merit Part No.	Stoncor Part No.	Thordorson Part No.	Triod Part No.	
T2	Vert. Output	25D65840A10-R	A-2853 ①	A-8148 ①	26S22	A-133X	① Cut and tape green lead.
T3	Alt. Vert. Output Yoke (Horiz. 20MHz) 92° (Vert. 39.5MHz)	25D65840A14 24D6662LA01-0	MDF-99 † M51-70-90 ②	DY-37A	Y-25 ② ③	Y-41-3 & YC-U2	② Use original horiz. damping capacitor (C38) if necessary. ③ Use original rear cover and centering device.
T4	Alt. Yoke Horiz. Output Pri. & Sec. Windings Alt. Horiz. Output Horiz. Output (Used with 2" CRT)	24D6662LA01 24D66258A09-II 24D65558A09 24D66258A09 24D66258A08					

ORIGINAL →	HV TRANSFORMER					VERTICAL OUTPUT				YOKE				YOKE PLUG						
REPLACEMENT ↓	Original Connections					Original Connections				Original Connections				1	2	3	4	5	6	7
	1	2	3	4	5	6	Blue	Green	Red				1	2	3	4	5	6	7	8
MERIT							Blue	White	Red				7	3	2	4	5	6	1	8
STANCOR							Blue	White	Red				1	2	3	4	5	6	7	8
THORDARSON							Blue	Red	Green				7	3	2	4	5	6	1	8
TRIAD							Blue	Red	Yel.				1	2	3	4	5	6	7	8

ITEM No.	IMPEDANCE		REPLACEMENT DATA					NOTES
			MOTOROLA PART No.	Merit PART No.	Stoncor PART No.	Thordorson PART No.	Triod PART No.	
	PRI.	SEC.						
T5	10.5 K	6-8Ω	25D5984A06 25D5984A10 25D5984A04	A-2900 ①	A-3823 ①	24S06 ①	S-53X ①	① Drill new mounting hole(s). ② Alternate

ITEM No.	TYPE			REPLACEMENT DATA		NOTES
				MOTOROLA PART No.	QUAM PART No.	
	SIZE	FIELD	V. C. IMP.			
SP1	4"	PM	8-8Q	50D60323A01	4A07Z8	

ITEM No.	USE	DESCRIPTION	MOTOROLA PART No.	REPLACEMENT DATA
K1	AGC Network	12meg, 2meg, 2.2meg, 680K	51D65239A04	Centralab PC-427
K2	2nd Video IF	.001mld, 18K, 220K, 180K	51D65239A17	
K3	Audio Detector Network	.001mld, 4700mmf, 220K, 560K	51D65239A08	Centralab PC-428 Note 1
K4	Audio Decoupling	470mmf, .01mfd, 1000K, 1meg	51D65239A12	Centralab PC-431
K5	Sync Couplate	2000mmf, 220K, 27mmf, 56K, 3.5meg, 560K, 56K, 470K	51B747693	Centralab PC-358
K8	Vertical Sweep	.01mfd, .015mfd, .01mfd, .05mfd, .0033mfd, .0033mfd, 22K, 4700K, 10K, 2200K, 68K, 1meg	51D66334A05	
K7	AFC Network	.005mfd, 150mmf, .001mfd, .0039mfd, 220K, 47K, 1meg, 100K, 390K	51D65239A13	Centralab PC-432
K8	Horizontal Sweep	.0033mfd, .005mfd, .001mfd, .0077mfd, .5mfd, 47K, 1meg, 12K, 2700K	51D66326A03	

Note 1. Some versions use Part #51D65239A24 (470mmf, 4700mmf, 220Ω, 560Ω) in this application.

**MOTOROLA CHASSIS  
584, 584Y SERIES**

## PARTS LIST &amp; DESCRIPTION

## RECEIVER TRR-1

## RECEIVER TRR-1 (cont'd)

## TRANSISTORS

ITEM No.	ORIG. TYPE	USE	REPLACEMENT DATA		NOTES
			DELCO PART No.	GENERAL ELECTRIC PART No.	
X1	4565	1st 40KC Amp.	D825	GEL 2N410	PNP
X2	4565	2nd 40KC Amp.	D825	GEL 2N410	PNP
X3	4567	3rd 40KC Amp.	D825	GEL 2N410	PNP
X4	4567	Limiter	D825	GEL 2N410	PNP
X5	4563 *	Channel Selector Relay	4563 *	GEL 2N408	PNP
X6	4564 *	Control Amp.	4564 *	GEL 2N408	PNP
	4563 *	Volume Step Relay	4563 *	GEL 2N408	PNP
	4564 *	Control Amp.	4564 *	GEL 2N408	PNP

## POWER RECTIFIERS &amp; SIGNAL DIODES

ITEM No.	CURRENT RATING (Measured)	ORIGINAL Part or Type No.	RECTIFIERS		NOTES
			SARKES TARZIAN PART No.	GENERAL ELECTRIC PART No.	
X7		40C568A02 (UN125)	10J		Silicon Rectifier

## ELECTROLYTIC CAPACITORS

ITEM No.	RATING CAP. VOLT.	REPLACEMENT DATA	REMARKS	REPLACEMENT DATA
C1	100	23C68135A01		SPRAGUE PYRAMID PART No.
C2	25	23C68135A03		MALLORY PART No.
C3	25	23C68135A03		TT25X25 MLV25-25
C4	100	23C68135A02		TT25X25 MLV25-25
C5	100	23C68135A02		TE-1207 TE-1207

## FIXED CAPACITORS

ITEM No.	RATING @	REMARKS	REPLACEMENT DATA	REPLACEMENT DATA
C6	1mfd 3V		UK-105	RY-135
C7	.05		DD-503	5HK-550
C8	.05		DD-503	5HK-550
C9	.05		DD-503	5HK-550
C10	.05		DD-503	5HK-550
C11	5% N150	#21B131017	CM-19B-82J	10TCP-Q56
C12	5% N150	#21B131017	CM-19B-82J	MS-382-Q56
C13	5% N150		CM-19B-82J	10TCP-Q56
C14	5% N150		CM-19B-82J	MS-382

\* Not normally in distributor's stock. Available thru distributor on order to manufacturer.

\* Motorola Part Number

## CONTROLS

All wattages 1/2 watt, or less, unless otherwise listed.

ITEM No.	USE	RESISTANCE	REPLACEMENT DATA		MALLORY PART No.
			MOTOROLA PART No.	CLAROSTAT PART No.	
R1	Range	2000 3000 Stop	18A540698		

## RESISTORS

All wattages 1/2 watt, or less, unless otherwise listed.

ITEM No.	RATING	REPLACEMENT DATA		ITEM No.	RATING	REPLACEMENT DATA	
		IRC PART No.	WORKMAN PART No.			IRC PART No.	WORKMAN PART No.
R2	4700Ω			R3	10K		

## COILS (RF-IF)

ITEM No.	USE	REPLACEMENT DATA		ITEM No.	USE	REPLACEMENT DATA	
		MOTOROLA PART No.	Merit PART No.			MOTOROLA PART No.	Merit PART No.
L1	Input 41.5 KC	24D6813A01		L2	41.5 KC	24D6813A02	
L3	38.5 KC	24D6813A02		L4	38.5 KC	24D6813A02	

## TRANSFORMER (POWER)

ITEM No.	RATING	REPLACEMENT DATA		ITEM No.	RATING	REPLACEMENT DATA	
		MOTOROLA PART No.	Merit PART No.			MOTOROLA PART No.	Merit PART No.
T1	117V @ .000A	25D68078A01		T2	117V @ .000A	25D68078A01	

## COMPONENT COMBINATIONS

ITEM No.	USE	REPLACEMENT DATA		ITEM No.	USE	REPLACEMENT DATA	
		MOTOROLA PART No.	Merit PART No.			MOTOROLA PART No.	Merit PART No.
K1	Amp. - Limiter	.05mfd, .05mfd, 2700Ω, 3300Ω, 4700Ω, 4700Ω		K2	Emitter Bypass	51D68176A01	
K3	Amp. - Limiter	1500Ω, 3300Ω, 18K, 27K, 27K, 47K		K4	Base Network	51D68095A01	
K5	3rd Amp. & Limiter	470Ω, 4700Ω, 8200Ω, 18K, 47K, 82K		K6	Base Network	51D68095A02	

## MISCELLANEOUS

ITEM No.	PART NAME	MOTOROLA PART No.	NOTES
M1	Relay	80D68087A01	Channel Change
M2	Relay	80D68087A01	Volume
M3	Microphone	50C6820A01	Includes Cable and Plug
M4	Printed Board	84C6820A02	Less Components

## TRANSMITTER

ITEM No.	PART NAME	MOTOROLA PART No.	NOTES
T1	Transmitter Tuning Rod	1V65816A99	Complete
T2	Tuning Rod	47K748546	Transducer, 41.5KC (Channel Selector)
T3	Pushbutton	47B748542	Transducer, 38.5KC (On, Volume, Mute, Off)
T4	Pushbutton	38C6815A01	On, Volume, Mute, Off
T5	Pushbutton	38C6815A02	Channel Selector



The listing of any available replacement part herein does not constitute in any case a recommendation, warranty or guaranty by Howard W. Sams & Co., Inc., as to the quality and suitability of such replacement part. The numbers of these parts have been compiled from information furnished to Howard W. Sams & Co., Inc., by the manufacturers of the particular type of replacement

LC617  
LA770MOTOROLA REMOTE CONTROL RECEIVER  
TRR-1, TRR-2, TRANSMITTER TRT-1, TRT-2

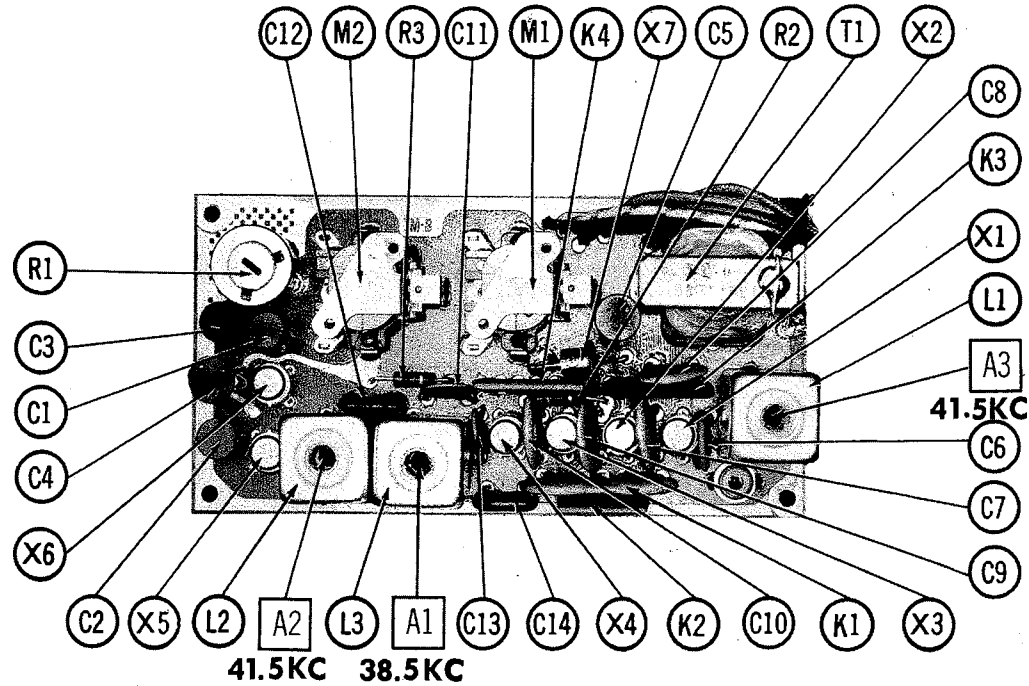
SET 622 FOLDER 1-A

PHOTOFACT® Folder

with CIRCUITRACE®

## IMPORTANT FILING NOTICE

This PHOTOFACT Folder covers equipment used with the TV chassis covered in PHOTOFACT SET 622 FOLDER 1. File this Folder with the TV Folder in the yellow filing jacket provided.



## RECEIVER — TOP VIEW

TYPE SET Remote Control Receiver with Mechanical Transmitter  
TRANSISTORS Six  
POWER SUPPLY 110-120 Volts AC, 60 Cycle

## ALIGNMENT INSTRUCTIONS

	SIGNAL GENERATOR COUPLING	SIGNAL GENERATOR FREQUENCY	CONNECT VTVM	ADJUST	REMARKS
1.	Across Microphone Input with 100K in high side.	38.5 KC (Unmod.)	DC probe to point ⬠. Common to chassis.	A1	Set Range control to center of rotation. Adjust A1 for maximum dip on VTVM. Use only enough generator output to provide a sharp indication.
2.	"	41.5 KC	DC probe to point ⬠. Common to chassis.	A2	Adjust for maximum dip in VTVM reading.
3.	"	"	"	A3	Adjust generator output to produce -11 volts on VTVM. Adjust for maximum dip in VTVM reading.

HOWARD W. SAMs &amp; CO., INC. Indianapolis 6, Indiana

part listed. Reproduction or use, without express permission, of editorial or pictorial content, in any manner, is prohibited. No patent liability is assumed with respect to the use of the information contained herein. ©1963 Howard W. Sams & Co., Inc., Indianapolis 6, Indiana.

Printed in U.S. of America

DATE 3-63

SET 622 FOLDER 1-A

MOTOROLA REMOTE CONTROL RECEIVER  
TRR-1, TRR-2, TRANSMITTER TRT-1, TRT-2

SET 622 FOLDER 1-A

