

CABINET-REAR VIEW

DISASSEMBLY INSTRUCTIONS

CHASSIS REMOVAL (MODEL 23K63BW)

1. Remove rear cover (10 screws); remove knobs from front.
2. Remove UHF Tuner bracket (4 screws).
3. Disconnect speakers, yoke, picture tube socket, and hi voltage lead.

4. Remove 4 chassis bolts.
5. Remove chassis.

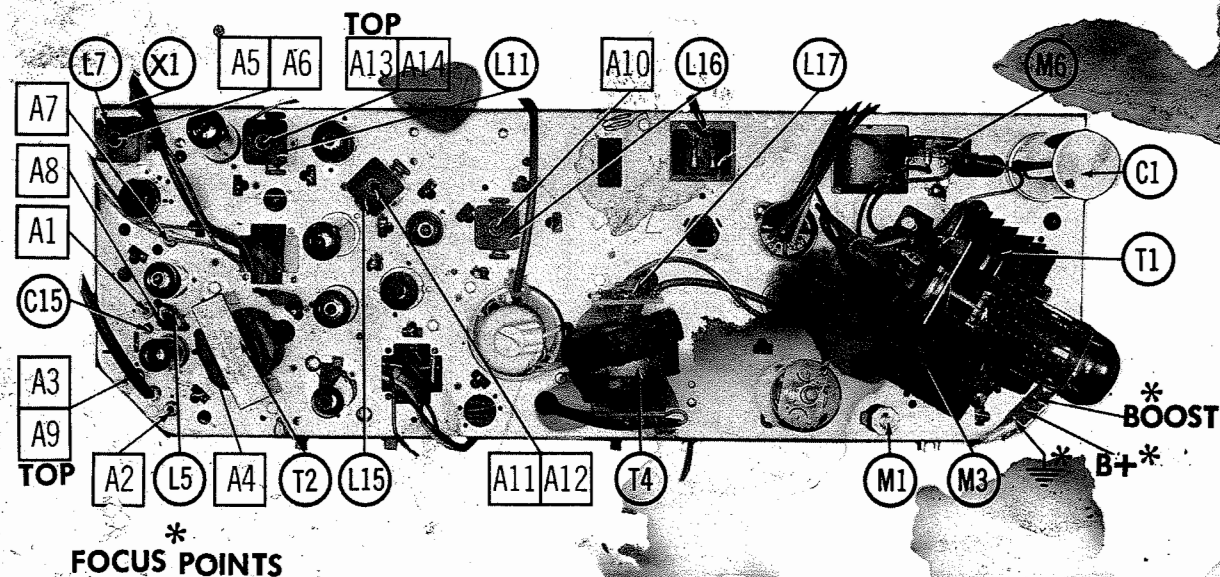
PICTURE TUBE REMOVAL

It is necessary to remove the chassis for picture tube replacement (or removal).

HORIZONTAL SWEEP CIRCUIT ADJUSTMENTS

Tune in a strong TV signal, preferably a test pattern. Set all controls for normal operation. Turn the Horizontal Hold (Osc. Coil Slug) clockwise until the set loses

sync. It may be necessary to switch off channel and back again for the picture to lose sync. Turn the Horizontal Hold slowly counterclockwise until the picture falls into sync.



FOCUS POINTS

CHASSIS-TOP VIEW

SET 615 FOLDER 2

MOTOROLA CHASSIS
TS-570 Series

PHOTOFACT® Folder



MODEL 23K63 BW

TRADE NAME MOTOROLA
MANUFACTURER Motorola Inc., 4545 W. Augusta Blvd., Chicago 51, Illinois
TUBES VHF - Seventeen, UHF - Eighteen
POWER SUPPLY 110-120 Volts AC, 60 Cycle
TUNING RANGE Channels 2 thru 13 VHF, 14 thru 83 UHF, Video IF 45.75MC, Sound IF 41.25MC (Inter-carrier)

MOTOROLA CHASSIS TS-570 Series

IMPORTANT FILING NOTICE

Some models covered by this PHOTOFACT Folder employ chassis in addition to the TV chassis. PHOTOFACT Folders covering these additional chassis are packaged immediately behind this Folder and should be filed with this Folder in the yellow filing jacket provided. For specific coverage see index below.

INDEX

Remote Control Receiver TRR-1,
Transmitter TRT-1 SET 615, FOLDER 2-A
AM-FM Ch. HS-1013
(HK-45-2) SET 615, FOLDER 2-B
Preamp-Power Amp
Ch. HS-979A SET 615, FOLDER 2-C
Preamp Ch. HS-977 SET 615, FOLDER 2-D
Power Amp Ch. HS-909A . . SET 615, FOLDER 2-E

Models	TV Chassis	TV Chassis Codes A-07 thru B-05
Y23C8BW, M, W; Y23K50M; Y23K52M, W	TS-570Y	
23C8BW, M, W; 23K50M; 23K52M, W	TS-570	
Y23C10BW, BWA, CW, CWA, M, MA, W, WA; Y23C10BWD, CWD, MD, WD;	PTS-570Y	
Y23K60M, W; Y23K61CW; Y23K62B, BW, M, W	PTS-570Y	
23C10BW, BWA, CW, CWA, M, MA, W, WA; 23C10BWD, CWD, MD, WD;	PTS-570	
23K60M, W; 23K61CW; 23K62B, BW, M, W	KTS-570Y	
Y23K55B, CW, M, W; Y23K56B, BW, CW, M, W; Y23K57B, M, W	KTS-570	
23K55B, CW, M, W; 23K56B, BW, CW, M, W; 23K57B, M, W	LTS-570Y	
Y23K63BW, M, W; Y23K64M; Y23K65CW; Y23K71MB	MTS-570Y	
23K63BW, M, W; 23K64M; 23K65CW; 23K71MB	MTS-570	
Y23T13B, BW, CW, M, W	MTS-570	
23T13B, BW, CW, M, W	MTS-570	

Models	TV Chassis	Remote Control Receiver	Transmitter	TV Chassis Codes A-07 thru B-05
A23C11BW, CW, M, W; A23K67M, W; A23K68BW, M, W	ATS-570	TRR-1 *	TRT-1	TRR-1B-00
A23T8CW, M, W	VATS-570	TRR-1 *	TRT-1	in some versions

Models	TV Chassis	Stereo Power Amp Chassis
Y23SF5MA, WA	RTS-570Y	HS-979
23SF5MA, WA	QTS-570	HS-979

Models	TV Chassis	Stereo Preamp Chassis	Stereo Power Amp Chassis
Y23SF6BWA, MA, WA; Y23SF7CWA; Y23SF8WA	RTS-570Y	HS-977	HS-909
23SF6BWA, MA, WA; 23SF7CWA; 23SF8WA	QTS-570	HS-977	HS-909

Models	TV Chassis	AM-FM Chassis	Stereo Power Amp Chassis
Y23SF5MAFM, WAFM	RTS-570Y	HS-1013	HS-979
23SF5MAFM, WAFM	QTS-570	HS-1013	HS-979

Models	TV Chassis	AM-FM Chassis	Stereo Preamp Chassis	Stereo Power Amp Chassis
Y23SF6WAFM, MAFM; Y23SF7CWAFM; Y23SF8WAFM	RTS-570Y	HS-1013	HS-977	HS-909
23SF6WAFM, MAFM; 23SF7CWAFM; 23SF8WAFM	QTS-570	HS-1013	HS-977	HS-909

SERVICING THE FIELD — PAGE 3

HOWARD W. SAMS & CO., INC. Indianapolis 6, Indiana

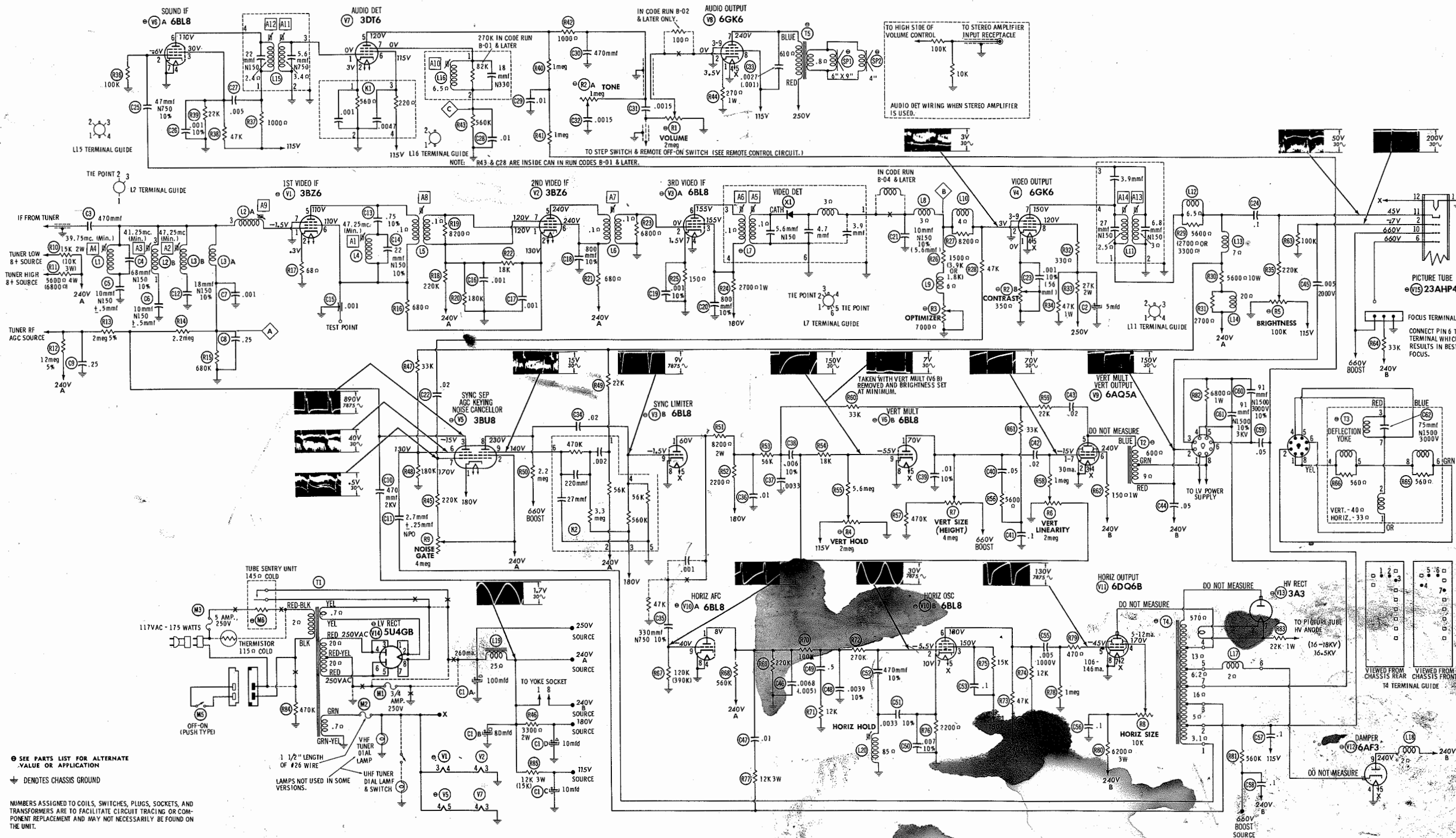
The listing of any available replacement part herein does not constitute in any case a recommendation, warranty or guaranty by Howard W. Sams & Co., Inc., as to the quality and suitability of such replacement part. The numbers of these parts have been compiled from information furnished to Howard W. Sams & Co., Inc., by the manufacturers of the particular type of replacement LA770

part listed. Reproduction or use, without express permission, of editorial or pictorial content, in any manner, is prohibited. No patent liability is assumed with respect to the use of the information contained herein. ©1963 Howard W. Sams & Co., Inc., Indianapolis 6, Indiana.

Printed in U.S. of America

MOTOROLA CHASSIS
TS-570 Series

SET 615 FOLDER 2



SEE PARTS LIST FOR ALTERNATE
VALUE OR APPLICATION
DENOTES CHASSIS GROUND

NUMBERS ASSIGNED TO COILS, SWITCHES, PLUGS, SOCKETS, AND
TRANSFORMERS ARE TO FACILITATE CIRCUIT TRACING OR COM-
PONENT REPLACEMENT AND MAY NOT NECESSARILY BE FOUND ON
THE UNIT.

WAVEFORMS TAKEN WITH CONTROLS
SET TO PRODUCE 50 VOLTS PEAK-TO-
PEAK SIGNAL AT PICTURE TUBE.

1. DC voltage measurements taken with vacuum tube
voltmeter; AC voltage measured at 1000 ohms
per volt.
2. Pin numbers are counted in clockwise direction on
bottom of socket.
3. Measured values are from socket pin to common negative
unless otherwise stated.
4. Line Voltage maintained at 117 volts for voltage readings.
5. All controls set for normal operation; no signal applied.

ADDITIONAL SCHEMATICS PAGE
POWER TUNING, REMOTE CONTROL CIRCUIT
USED IN TV CHASSIS TS-570 4
VHF & UHF TUNERS 6, 7 & 14, 9 & 13

A PHOTOFACT STANDARD NOTATION SCHEMATIC
©Howard W. Sams & Co., Inc. 1963

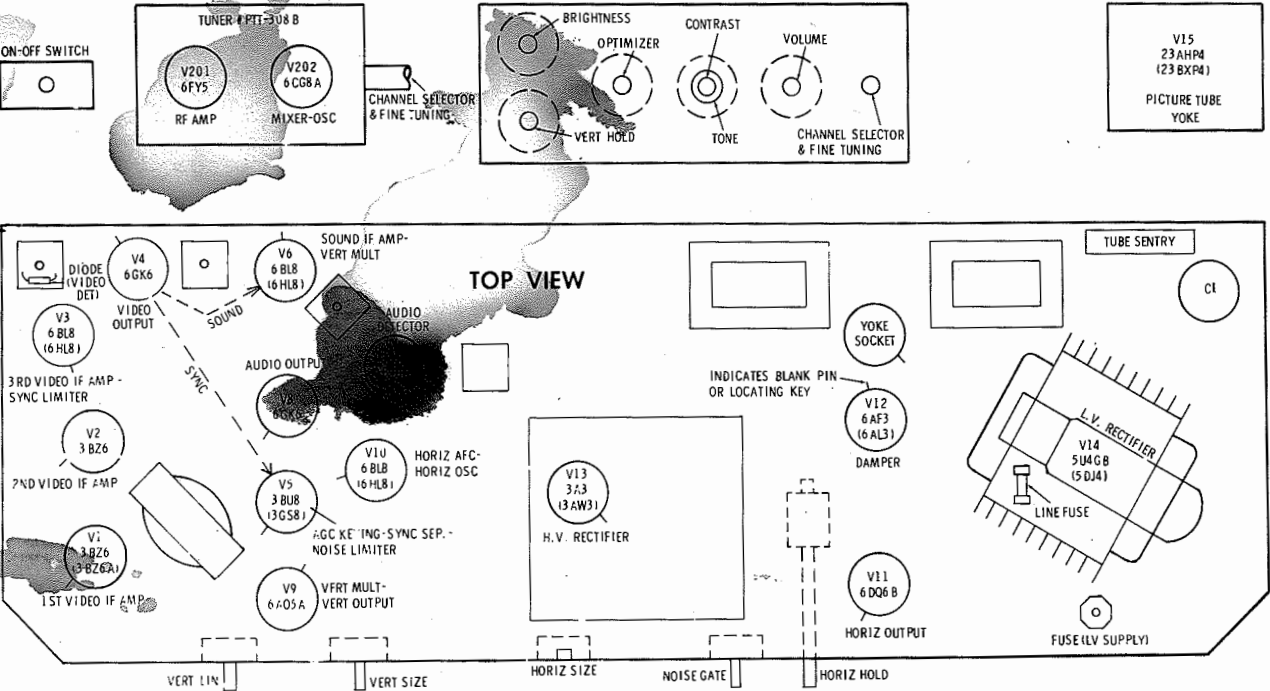
MOTOROLA CHASSIS
TS-570 Series

RESISTANCE MEASUREMENTS

ITEM	TUBE	Pin 1	Pin 2	Pin 3	Pin 4	Pin 5	Pin 6	Pin 7	Pin 8	Pin 9
V1	3BZ6	560K	68Ω	FIL	FIL	▲ 680Ω	▲ 680Ω	0Ω		
V2	3BZ6	130K	150K	FIL	FIL	† 700Ω	† 700Ω	130K		
V3	6BL8	† 15K	.1Ω	† 6000Ω	FIL	FIL	† 6000Ω	150Ω	0Ω	56K
V4	6GK6	175Ω	150Ω	0Ω	FIL	FIL	NC	† 5.6K	† 27K	0Ω
V5	3BU8	† 3.3K	† 25Ω	2.7meg	FIL	FIL	† 38K	† 250K	† 2.7meg	† 3.6meg
V6	6BL8	† 3meg	100K	† 30K	FIL	FIL	† 13K	0Ω	0Ω	1.5meg
V7	3DT6	3.4Ω	560Ω	FIL	FIL	† 2.2meg	† 12K	560K		
V8	6GK6	270Ω	1meg	0Ω	FIL	FIL	NC	† 610Ω	† 12K	0Ω
V9	6AQ5A	1.5meg	0Ω	FIL	FIL	† 625Ω	† 175Ω	1.5meg		
V10	6BL8	† 180K	550K	† 18K	FIL	FIL	† 47K	2200Ω	0Ω	120K
V11	6DQ6B	TP	FIL	NC	† 7100Ω	1meg	TP	FIL	0Ω	TOP CAP † 15Ω
V12	6AF3	NC	NC	NC	FIL	FIL	NC	NC	NC	† 27Ω
V13	3A3	PINS 1 THRU 8 HAVE INFINITE RESISTANCE								TOP CAP † 585Ω
V14	5U4GB	TP	† 20K	NC	20Ω	NC	20Ω	FIL	† 20K	
V15	23AHP4	FIL	100K	Pin 6 † 560K	Pin 10 † 560K	Pin 11 † 250K	Pin 12 FIL			
* V201	6FY5	0Ω	4meg	FIL	FIL	† 7000Ω	0Ω	0Ω		
* V202	6CG8A	4700Ω	† 21K	0Ω	FIL	FIL	† 5800Ω	† 15K	0Ω	280K
ITEM	TUBE	Pin 1	Pin 2	Pin 3	Pin 4	Pin 5	Pin 6	Pin 7	Pin 8	Pin 9

† THIS READING WILL VARY DEPENDING UPON THE CONDITION OF THE ELECTROLYTIC IN THE CIRCUIT.
† MEASURED FROM PIN 2 OF V14. ▲ MEASURED FROM PIN 2 OF V2.
† MEASURED FROM TOP CAP OF V12. NC NO CONNECTION TP TIE POINT
* VHF TUNER PTT-308B

TUBE PLACEMENT CHART

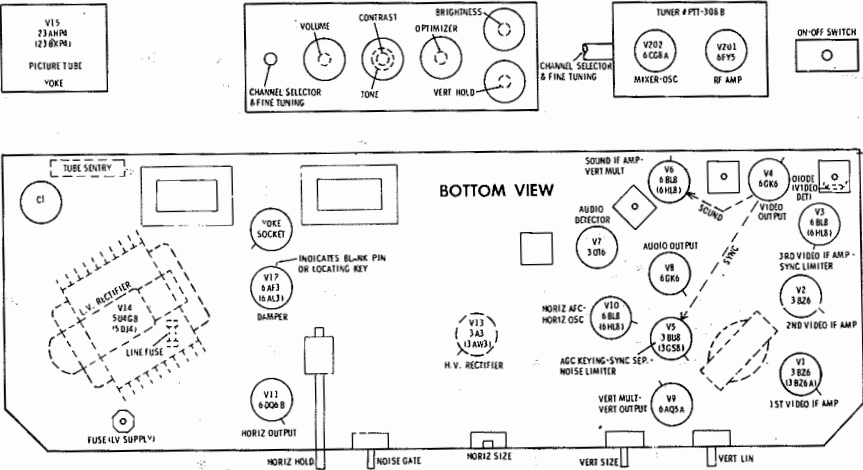


TUBE FAILURE CHECK CHART

The following chart lists tubes whose failures are most likely to produce indicated symptoms. Refer to tube placement chart for location and type of tube.

- POWER SUPPLY FAILURE**
No raster, no sound V14, M1, M2, M3, M6
- SWEEP FAILURE**
No raster, has sound V10, V11, V12, V13, V15
No vertical deflection V8, V9
Poor vert. linearity or foldover V8, V9
Poor horiz. linearity or foldover V10, V11, V12
Narrow picture V10, V11, V12, V14
Vert. off freq. V8, V9
Horiz. off freq. V10, V11
- LOSS OF PICTURE OR SOUND**
No pic, no sound, has raster V1, V2, V3, V4, X1
No pic, no sound, has snow V201, V202, V1
No pic, has sound, has raster V15
Has pic, no sound V6, V7, V8
Overloaded picture V5
- SYNC FAILURE**
No vert. sync V3, V5
No horiz. sync V3, V5
No vert. or horiz. sync V3, V5

TUBE PLACEMENT CHART



SERVICING IN THE FIELD

- SAFETY GLASS**
Models using 23AHP4 have removable safety glass.
Safety glass is integral part of picture tube (bonded) on 23YP4.
- FUSE OR FUSE DEVICE** **LOCATION**
Line Fuse 5A See Tube Placement Chart
LV Supply Fuse 3/4A See Tube Placement Chart
Fil. Fuse Wire #26 See M2 in photo, page 5.
- VHF TUNER OSCILLATOR ADJUSTMENT**
Set Fine Tuning to center of Range. Adjust Osc. slug (one for each channel) for best picture and sound.
- AGC**
No provisions are made to vary the AGC on this receiver.
- FOCUS**
The focus may be varied by connecting the lead from pin 6 of the picture tube to various voltage points. (For location, see photo page 20).
- SYNC STABILITY**
Sync stability may be varied by means of a Noise Gate Control. (For location, see "Tube Placement Chart".)
- HORIZ OSCILLATOR FIELD ADJUSTMENT**
The horizontal oscillator coil slug is used for the horizontal hold.
- WIDTH**
The width may be varied by a Horizontal Size Control. For location, see "Tube Placement Chart".
- CENTERING**
Centering is accomplished by 2 magnetic rings, located behind the yoke, on the neck of the picture tube.
- OPTIMIZER (VIDEO BANDPASS) CONTROL ADJUSTMENT**
Adjust Brightness, Contrast, and Fine Tuning for best picture and sound. Starting with Optimizer at mechanical mid-range, adjust control for best picture (low resistance setting for strong areas, high resistance setting for weak signal areas).

ALIGNMENT INSTRUCTIONS

PREALIGNMENT INSTRUCTIONS

The High Voltage lead should be securely taped and kept away from the chassis. Allow a 20 minute warm-up period for the receiver and test equipment.

Suggested Alignment Tools: A1 thru A14 GENERAL CEMENT #8282, 8606, 8606L, 8295, 9440
WALSCO #2526, 2543, 2544, 2545

Mixer Plate Coll GENERAL CEMENT #9296, 9297
WALSCO #2546, 2547

VIDEO IF ALIGNMENT

Use only enough generator output to provide a usable indication. Disable oscillator grid by removing a pin of a test tube. Connect the synchronized sweep voltage from the sweep generator to the horizontal input of the oscilloscope for horizontal deflection. Connect variable bias to IF AGC line at point A. Adjust bias to obtain response curve which shows no indication of overloading.

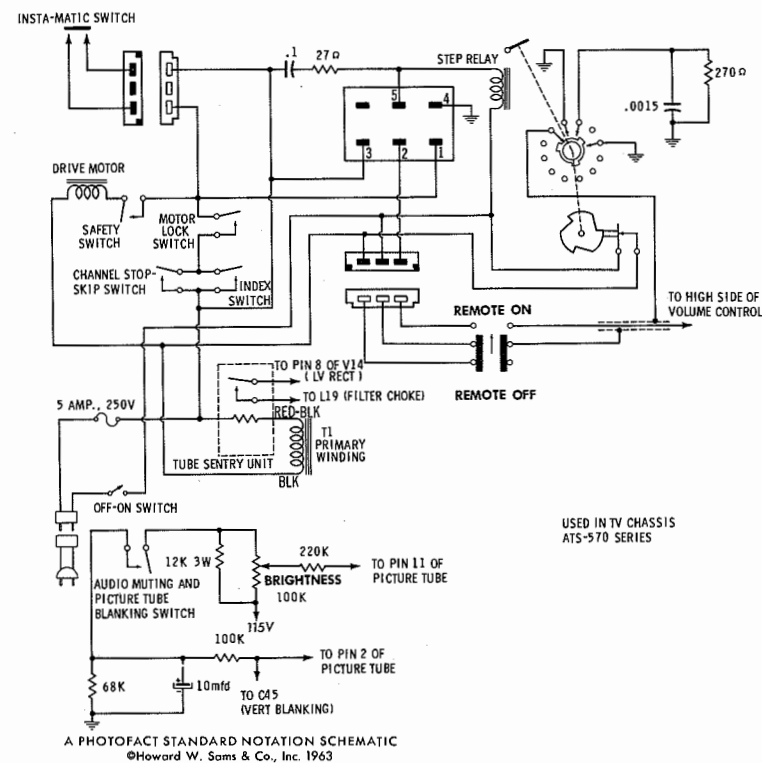
	SWEEP GENERATOR COUPLING	SWEEP GENERATOR FREQUENCY	MARKER GENERATOR FREQUENCY	CHANNEL	CONNECT VTVM	ADJUST	REMARKS
1.	High side to ungrounded tube shield over Mixer-Osc. Low side to chassis.		47.25MC	Any non-interfering channel	Connect high side of VTVM thru a 47K Resistor to Point (B) Common to ground.	A1, A2	Define A1 and adjust A2 for MINIMUM. (It may be desirable to disable AGC.)
2.	"		41.25MC	"	"	A3	Adjust for MINIMUM.
3.	"		39.75MC	"	"	A4	Adjust for MINIMUM.
4.	High side to pin 2 (grid) of V3. Low side to ground.	44MC (10MC Sweep)	41.25MC 45.75MC	"	CONNECT SCOPE Connect Vert. input of scope to Point (B) Low side to ground.	A5, A6	Adjust for maximum amplitude and MINIMUM tilt with markers as shown in Fig. 1.
5.	"	"	39.75MC 41.25MC 42.0MC 42.75MC 45.1MC 45.75MC 47.25MC	"	"	A7, A8, A9 and Mixer Plate Coil	Adjust for maximum amplitude and MINIMUM tilt with markers as shown in Fig. 2.

SOUND IF ALIGNMENT

Tune in a strong TV signal. Adjust all controls for normal picture and sound. Connect the DC Probe of a VTVM to Point . Common to ground. Adjust A10 for maximum deflection choosing the one of two peaks that produces the highest voltage. Disconnect or short the antenna terminals to produce a hiss in the sound. Adjust A1, A12, and A13 for maximum undistorted sound.

4.5MC TRAP ALIGNMENT

Tune in a strong TV signal and turn the Contrast control fully clockwise. Adjust the Fine Tuning to bring the 4.5MC beat interference into the picture. Adjust A14 for MINIMUM beat interference.



POWER TUNING-REMOTE CIRCUIT

ALIGNMENT INSTRUCTIONS TURRET-TYPE TUNERS

PRE-ALIGNMENT INSTRUCTIONS

The High Voltage lead should be securely taped and kept away from the chassis. Allow a 20 minute warm-up period for the receiver and test equipment.

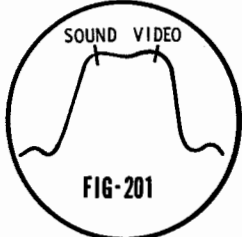
VHF OSCILLATOR ADJUSTMENT

Set Fine Tuning to center of its range. Starting with highest channel in area, adjust the appropriate oscillator screw for best picture and sound.

VHF RF MIXER ALIGNMENT

Connect the negative lead of a 4.5 volt bias supply to point \diamond . Positive to chassis.
Connect the synchronized sweep voltage from the sweep generator to the horizontal input of the oscilloscope for horizontal deflection.
The generator output lead should be terminated with its characteristic impedance, usually 50 ohms.
Use only enough sweep generator output to provide a usable pattern on scope.
Use 10MC sweep unless otherwise noted.
Coils not containing adjustable cores are adjusted by expanding or compressing coil turns

Connect the synchronized sweep voltage from the sweep generator to the horizontal input of the oscilloscope for horizontal deflection. Use only enough generator output to provide a usable indication. Use 10MC sweep unless otherwise noted. Connect the negative lead of a 250 volt bias supply to point $\textcircled{1}$. Positive to chassis.

	SWEEP GENERATOR COUPLING	SWEET GENERATOR FREQUENCY	MARKER GENERATOR FREQUENCY	CHANNEL	CONNECT SCOPE	ADJUST	REMARKS
1.	Across Antenna Terminal with 120Ω Resistor in each lead.	215MC	211. 25MC 215. 75MC	13	Vert. Amp. thru Demodulator Probe to Point ∇ . Low side to chassis.	A201, A202	Adjust for maximum gain and symmetry of response similar to Fig. 201 with markers as shown.
2.	"	177MC	175. 25MC 179. 75MC	7	"	A203	Adjust for MINIMUM response on scope.
		207MC	205. 25MC 209. 75MC	12			<p>Spread or compress coils for maximum gain and symmetry of response similar to Fig. 201 with markers as shown.</p> 
		201MC	199. 25MC 203. 75MC	11			
		195MC	193. 25MC 197. 75MC	10			
		189MC	187. 25MC 191. 75MC	9			
		183MC	181. 25MC 185. 75MC	8			
		85MC	83. 25MC 87. 25MC	6			
		79MC	77. 25MC 81. 25MC	5			
		69MC	67. 25MC 71. 75MC	4			
		63MC	61. 25MC 65. 75MC	3			
		57MC	55. 25MC 59. 75MC	2			

ALIGNMENT INSTRUCTIONS WAFER-TYPE TUNER

PRE-ALIGNMENT INSTRUCTIONS

The High Voltage lead should be securely taped and kept away from the chassis. Allow a 20 minute warm-up period for the receiver and test equipment.

VHF OSCILLATOR ADJUSTMENT

Set Fine Tuning to center of its range. Starting with highest channel in area, adjust the appropriate oscillator screw for best picture and sound.

VHF RF MIXER ALIGNMENT

Connect the synchronized sweep voltage from the sweep generator to the horizontal input of the oscilloscope for horizontal deflection. Use only enough sweep generator output to provide a usable pattern on scope. Use 10MC sweep unless otherwise noted. Connect variable bias to 1F AGC line. Adjust bias to obtain response curve which shows no indication of overloading.


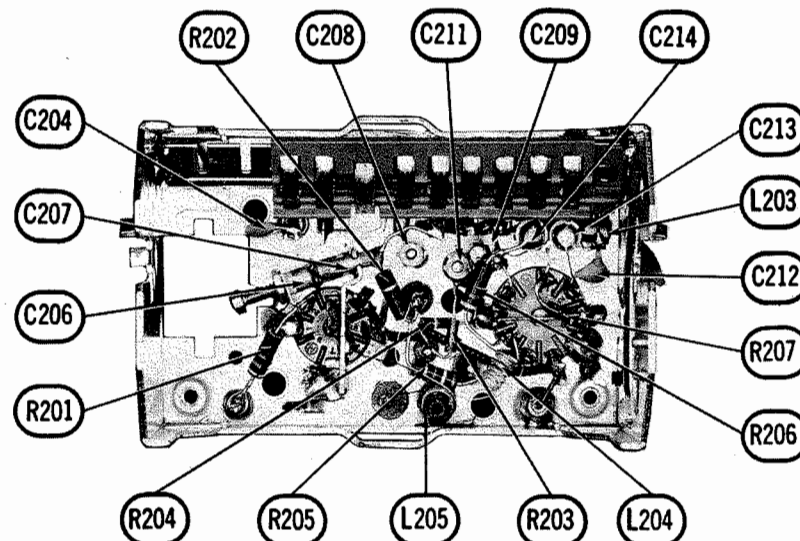
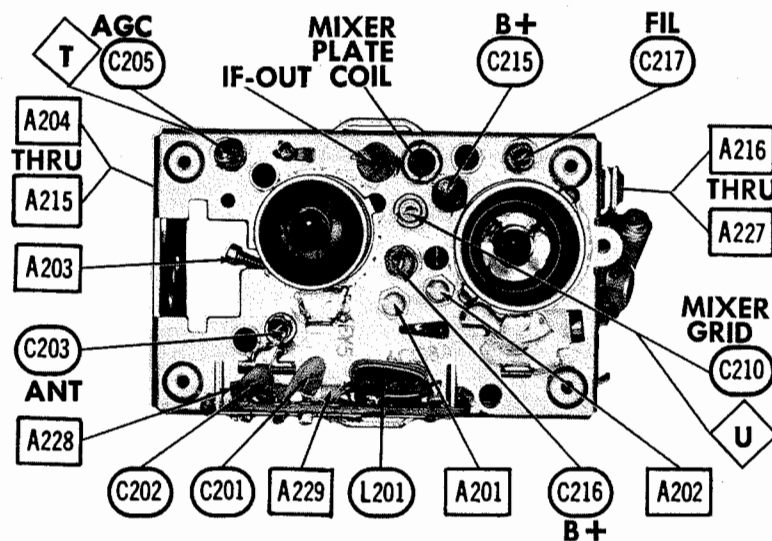
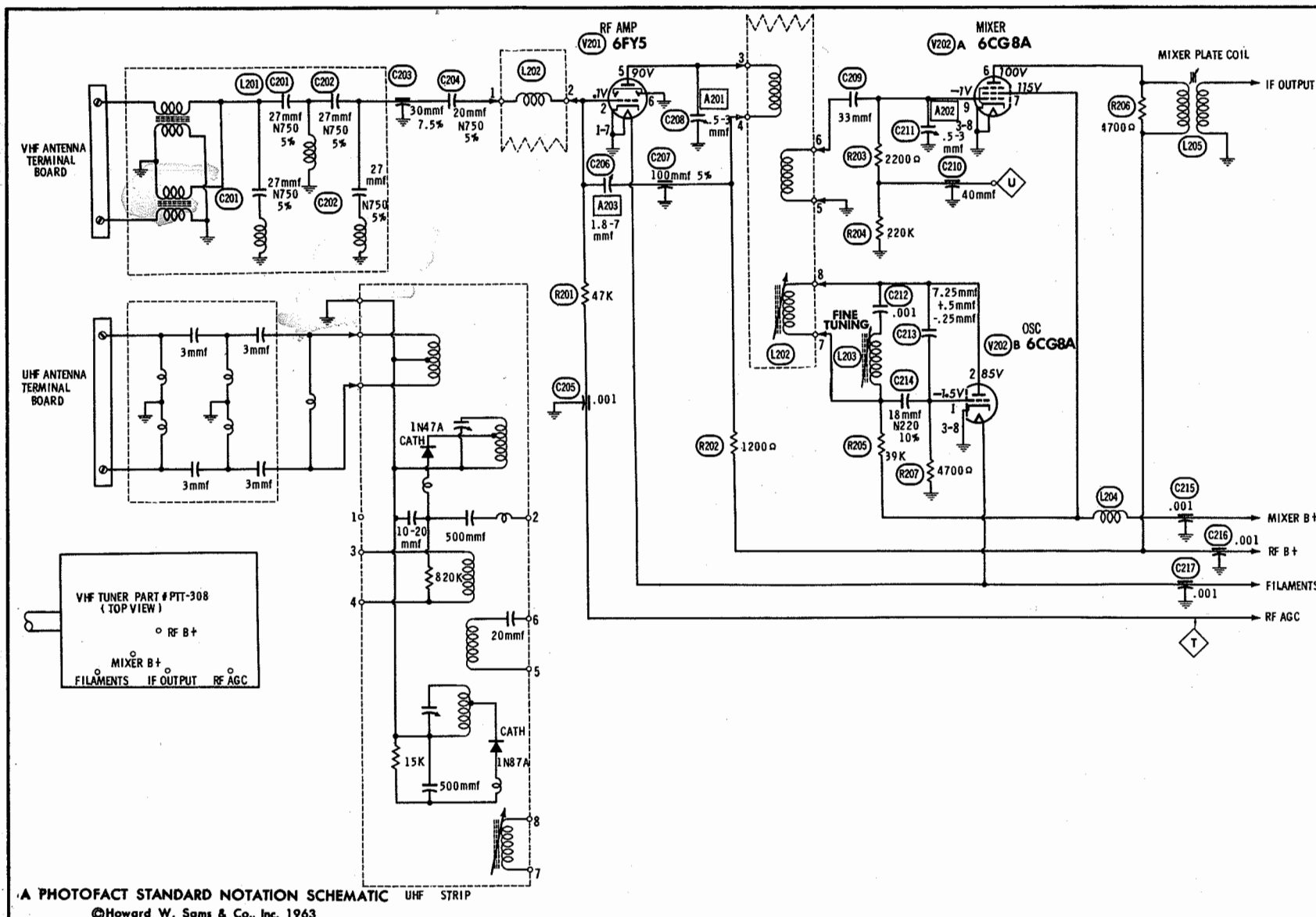
	SWEEP GENERATOR COUPLING	SWEEP GENERATOR FREQUENCY	MARKER GENERATOR FREQUENCY	CHANNEL	CONNECT SCOPE	ADJUST	REMARKS
1.	Across antenna terminal with 120Ω resistor in each lead.	213MC	211. 25MC 215. 75MC	13	Vert. Amp. thru Demodulator Probe to Point  . Low side to chassis.	A201, A202	Spread or compress coils for maximum gain and symmetry of response similar to Fig. 201 with markers as shown. If necessary, make compromise adjustment for best picture and sound in all channels.
2.	"	"	"	"	"	A203	Adjust for MINIMUM response on scope.
		207MC	205. 25MC 209. 75MC	12			
		201MC	199. 25MC 203. 75MC	11			
		195MC	193. 25MC 197. 75MC	10			
		189MC	187. 25MC 191. 75MC	9			
		183MC	181. 25MC 185. 75MC	8			
		177MC	175. 25MC 179. 75MC	7			
		85MC	83. 25MC 87. 75MC	6			
		79MC	77. 25MC 81. 75MC	5			
		69MC	67. 25MC 71. 75MC	4			
		63MC	61. 25MC 65. 75MC	3			
		57MC	55. 25MC 59. 75MC	2			

FIG 201



13 POSITION TURRET-TYPE VHF TUNER PTT / QTT / 308, 308B, BTT-310

TUBES

ITEM No.	USE	TYPE	ITEM No.	USE	TYPE
V201	RF Amp.	6FY5	V202	Mixer - Osc.	6CG8A

FIXED CAPACITORS

ITEM No.	RATING		REMARKS	REPLACEMENT DATA					
				AEROVOX PART No.	CENTRALAB PART No.	CORNELL-DUBILIER PART No.	ELMENCO PART No.	MALLORY PART No.	SPRAGUE PART No.
C201A	27	N750 5%	#21P65119A06	EF-001	TCN-27	C10Q27U	CCF-102	CN7-427	10TCU-Q27
B	27	N750 5%			TCN-27	C10Q27U		CN7-427	10TCU-Q27
C202A	27	N750 5%			TCN-27	C10Q27U		CN7-427	10TCU-Q27
E	27	N750 5%			TCN-27	C10Q27U		CN7-427	10TCU-Q27
C203	30	7.5%	#1P65119A09	EF-0001	TCN-20	C10Q2U	CV-1 CCF-102	CN7-420	10TCU-Q20
C204	20	N750 5%			MFT-1000			CT280A	
C205	.001				829-7				
C206	1.8-7				MFT-100				
C207	100	5%	#21P65119A11	NPO-SI 3.3	829-3	C10Q33C	CCCTO-330	CT565	10TCC-Q33
C208	.5-3							CNO-433	
C209	33								
C210	40								
C211	.5-3		#21P65119A16	DI-1000	829-3		* CCF-102	CT565	10T8-D10
C212	.001				DD-102	BYA10D1		CCD-102	GP210
C213	7.25	+.5-.25mmf							
C214	18	N220 10%							
C215	.001		#21P65119A14	EF-001	MFT-1000		CCF-102	CT280A	10TCR-Q18
C216	.001				MFT-1000			CT280A	
C217	.001				MFT-1000			CT280A	

Motorola Part Number

* Not normally in distributor's stock. Available thru distributor on order to manufacturer.

RESISTORS

All wattages 1/2 watt, or less, unless otherwise listed.

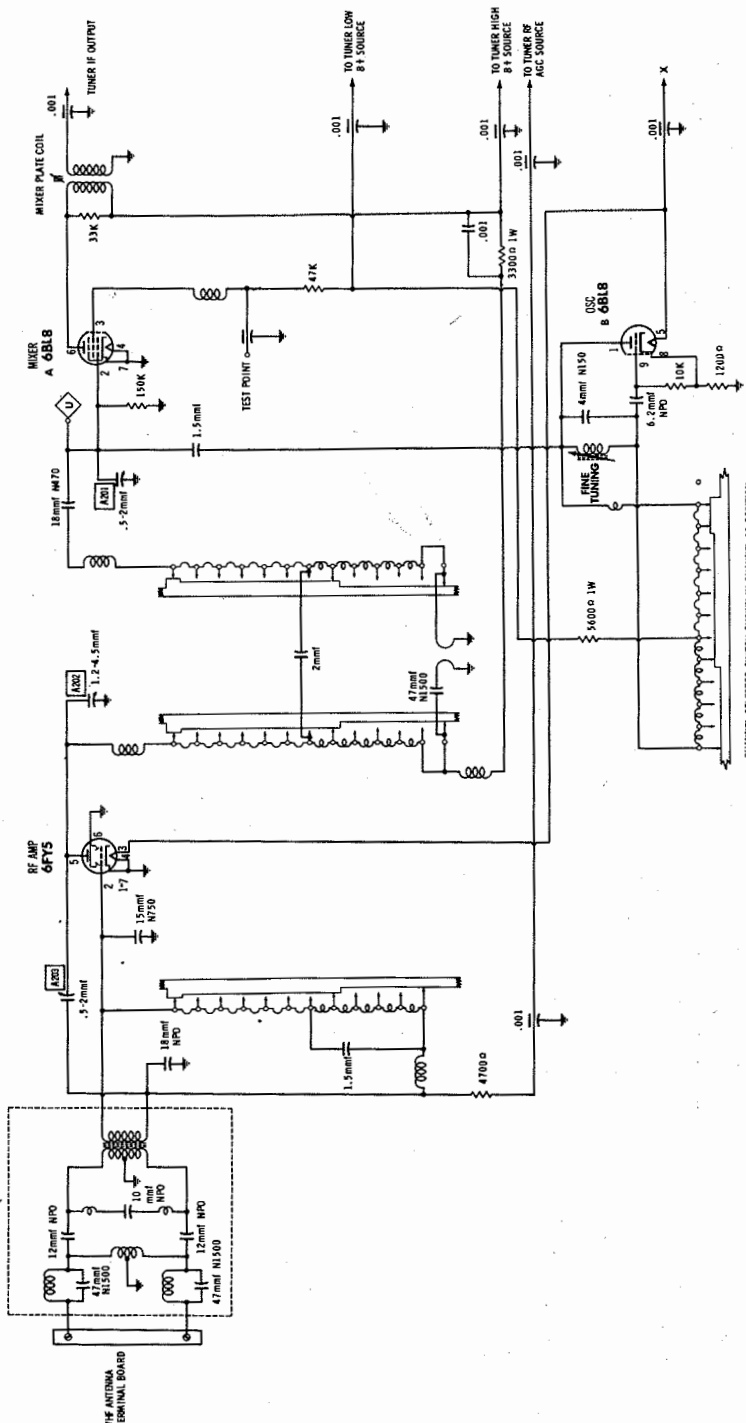
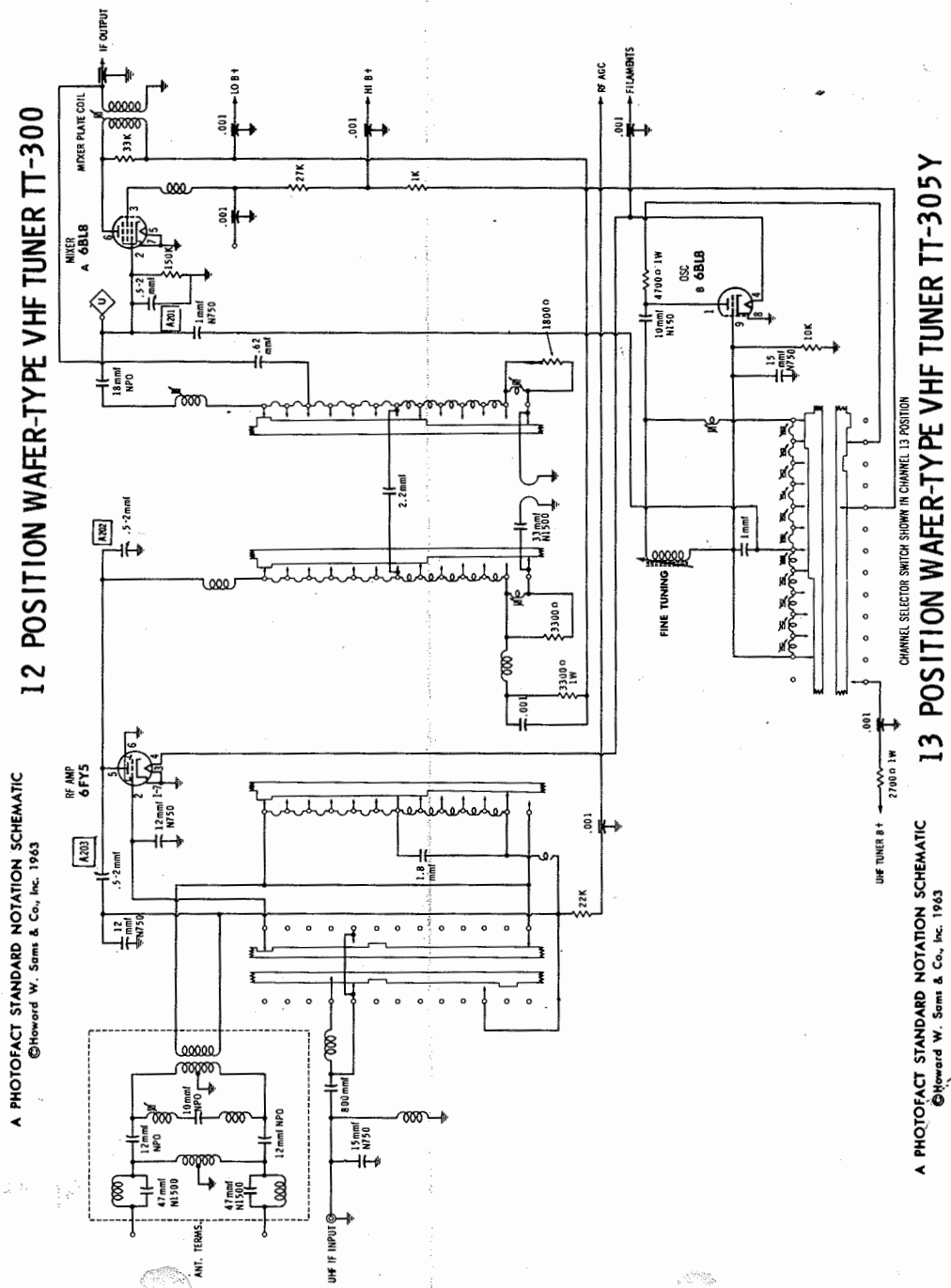
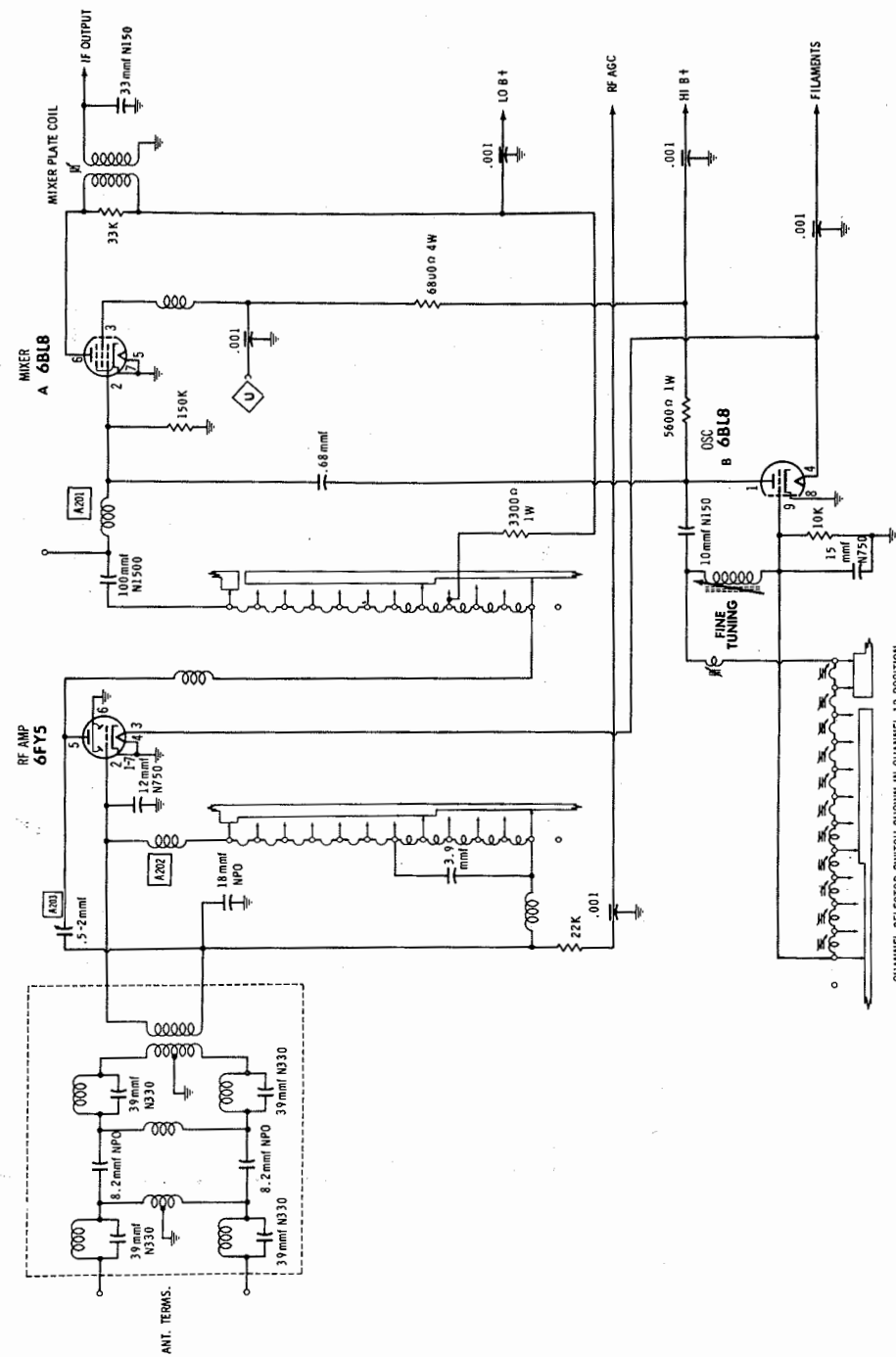
ITEM No.	RATING	REPLACEMENT DATA			ITEM No.	RATING	REPLACEMENT DATA		
		IRC PART No.	WORKMAN TV PART No.	REMARKS			IRC PART No.	WORKMAN TV PART No.	REMARKS
R201	47K				R205	39K			
R202	1200Ω				R206	4700Ω			
R203	2200Ω				R207	4700Ω			
R204	220K								

COILS (RF-IF)

ITEM No.	USE	MOTOROLA PART No.	NOTES
L201	Ant. Input Ass'y	1P65119A17	
L202A	Ant., RF, Mixer, Osc.	1D66142A02	Channel 2
B	"	1D66142A03	Channel 3
C	"	1D66142A04	Channel 4
D	"	1D66142A05	Channel 5
E	"	1D66142A06	Channel 6
F	"	1D66142A07	Channel 7
G	"	1D66142A08	Channel 8
L203	Fine Tuning	24P65119A39	Channel 9
L204	RF Choke	24P65119A21	Channel 10
L205	Mixer Plate	24P65119A23	Channel 11

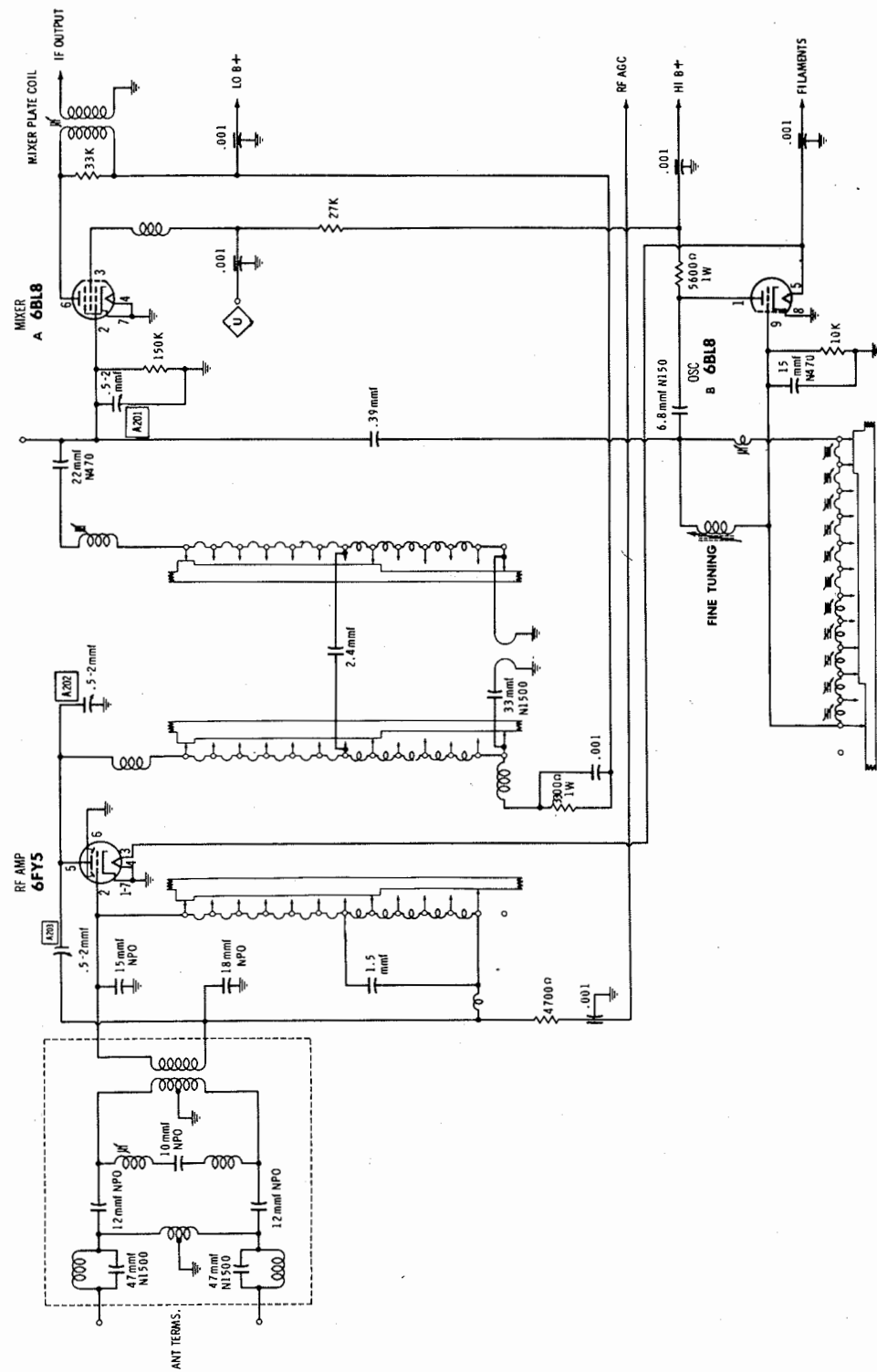
MOTOROLA CHASSIS TS-570 Series

FOLDER 2



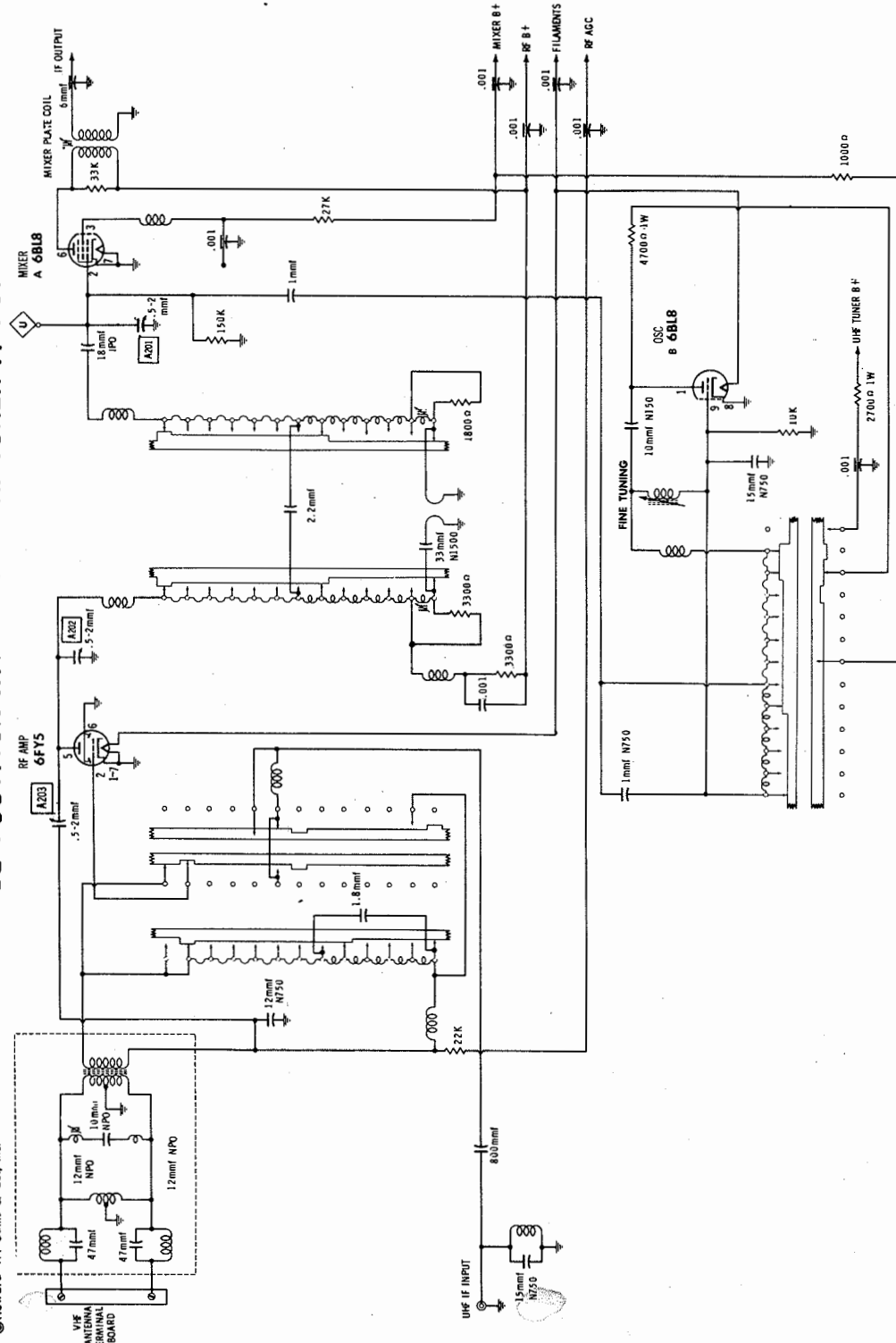
MOTOROLA
CHASSIS TS-570 Series

FOLDER 2



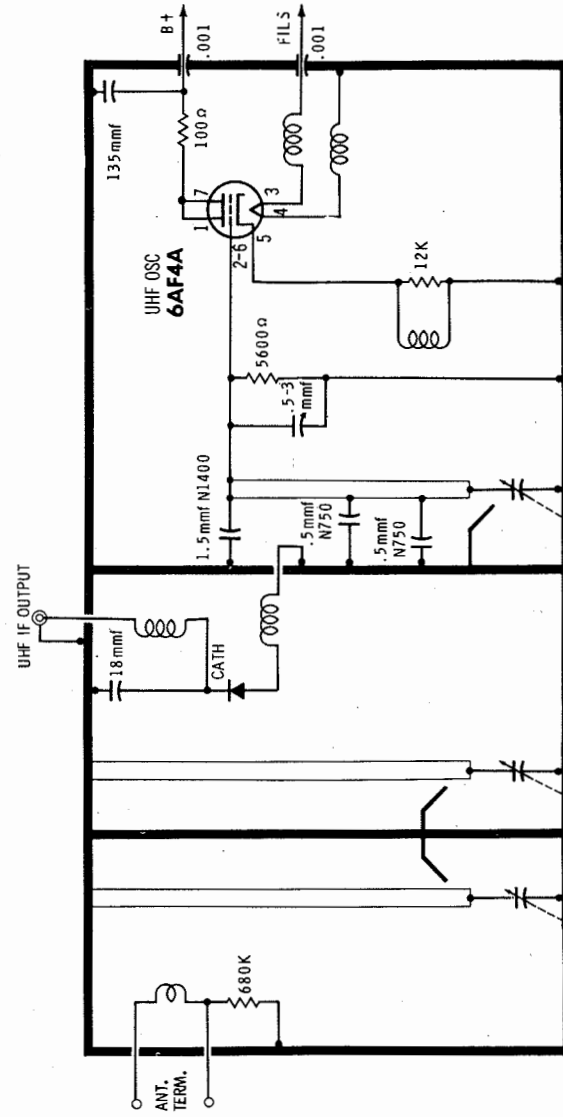
CHANNEL SELECTOR SWITCH SHOWN IN CHANNEL 13 POSITION

A PHOTOFACT STANDARD NOTATION SCHEMATIC
©Howard W. Sams & Co., Inc. 1963



A PHOTOFACT STANDARD NOTATION SCHEMATIC
©Howard W. Sams & Co., Inc. 1963

©Howard W. Sams & Co., Inc. 1963



A PHOTOFACT STANDARD NOTATION SCHEMATIC
UHF TUNER KTT / QTT / RTT - 60 I
©Howard W. Sams & Co., Inc. 1963

©Howard W. Sams & Co., Inc. 1963

MOTOROLA
CHASSIS TS-570 Series

PARTS LIST AND DESCRIPTION (CONTINUED)

Replacement parts shown may be superseded by the availability of newly introduced replacements.
Have your local distributor check Sams COUNTER FACTS for the most up-to-date replacement.

COILS (RF-IF)

ITEM No.	USE	REPLACEMENT DATA					NOTES
		MOTOROLA PART No.	Merit PART No.	Miller PART No.	Stancor PART No.	Workman PART No.	
L1	39.75MC Trap	24K754048	TV-152	8225 ▲	RTC-8556 ▲	T218	▲ Disregard Tap.
L2A	1st Video IF	24K750637	TV-134	8221 ▲	RTC-8552 ▲	T265	▲ Disregard Secondary.
L3A	41.25MC Trap	24D6588A06					
L3B	RF Choke						
L4	47.25MC Trap		TV-153 †	8225 †	RTC-8556 †	T218 †	† For trap only. Drill mounting hole.
L5	2nd Video IF	24K747585	TV-153	8225 ▲	RTC-8556 ▲	T218	
L6	3rd Video IF	24K747587	TV-130	8224	RTC-8555	T217A	
L7A	4th Video IF	24K751248	TV-130	8224	RTC-8555	T217A	
L7B	RF Choke (8.5uh)	1V85816A97 ①					① Includes complete assembly.
L8	RF Choke (8.5uh)	24C65828A01	BC-566	4611	RTC-8521	T960	
L9	Peaking (200uh)	24C65828A01	BC-566	4611	RTC-8521	T960	
L10	Peaking (100uh)	24C65828A12	BC-873	6154	RTC-8586	T345	
L11A	4.5MC Trap	24K754220 ②	BC-879 *	6112 *	RTC-8574 *	T341 *	② Includes 8200Q Resistor * Shunt with 8200Q Resistor.
L12A	Sound Takeoff	24D6595A01					
L13A	4.5MC Trap	1V66241A47 ③					③ Ch. Codes B-01 & later.
L14	Sound Takeoff						④ Includes 5600Q Resistor * Shunt with 5600Q Resistor.
L15	Peaking (270uh)	24C6582A13 ④	BC-874 *	6130 *	RTC-8576 *	T347 *	
L16	Peaking (200uh)	24C65828A15 ⑤					⑤ Includes 3300Q Resistor (Ch. Codes B-02 & later.
L17	Peaking (200uh)	24C65828A14	BC-873	6181	RTC-8588	T346	
L18	Peaking (200uh)	24C65828A11 ⑥	BC-881 †	6157 †	RTC-8589 †	T358 †	⑥ Includes 2700Q Resistor ‡ Shunt with 2700Q Resistor.
L19	Sound IF	24D6594A01					⑦ Includes assembly.
L20	Sound IF	1V86241A48 ⑦					(Ch. Codes B-01 & later.
L21	Quadrature	24D6594A01					⑧ Ch. Codes B-01 & later.
L22	Quadrature	1V86099A99 ⑧					
L23	RF Choke (7.5uh)	24C65828A06	BC-565	4611	RTC-8521	T821	
L24	RF Choke (7.5uh)	24C65828A08	BC-565	4611	RTC-8521	T821	

FILTER CHOKE

ITEM No.	RATINGS			REPLACEMENT DATA					NOTES
	CURRENT (Measured)	DC RES.	INDUCTANCE (0 CURRENT 1000~)	MOTOROLA PART No.	MERIT PART No.	STANCOR PART No.	THORDARSON PART No.	TRIAD PART No.	
L19	.240A	25Ω	.8 Hy.	25C85806A02	C-4084	C-2343 ①	26C78	C-28X	① Drill new mounting hole(s).

COILS (SWEEP CIRCUITS)

ITEM No.	USE	REPLACEMENT DATA						NOTES
		MOTOROLA PART No.	Merit PART No.	Miller PART No.	Stancor PART No.	Thordarson PART No.	Triad PART No.	
L20	Horiz. Osc.	24C65853A01	TV-165 ①	6319	RTC-8629	HS-7	T111	① Disregard Tap.

TRANSFORMER (POWER)

ITEM No.	RATING			REPLACEMENT DATA					NOTES
	PRI.	SEC. 1	SEC. 2	MOTOROLA PART No.	MERIT PART No.	STANCOR PART No.	THORDARSON PART No.	TRIAD PART No.	
T1	117VAC @ 1.6A	500VAC CT @ .260A DC	5VAC @ 3A	25D65663A03			26R122	R-75BA	
	SEC. 3	SEC. 4	SEC. 5						
	6.3VAC @ 8A								

* TRANSFORMERS (SWEEP CIRCUITS)

ITEM No.	USE	REPLACEMENT DATA					NOTES
		MOTOROLA PART No.	Merit PART No.	Stancor PART No.	Thordarson PART No.	Triad PART No.	
T2	Vert. Output	25D65840A02-H	A-2855	VO-108	26S22	A-142X	
T3	Alt. Vert. Output	25D65840A02					
	Yoke (Horiz. 25MH)	24K754490-AG	MDF-116 &		Y-54	Y-45-2	
	90° (Vert. 42MH)		M51-70-90				
	Alt. Yoke	24K754490					
	Rear Cover and Centering Device	59C72145	M51-70-90			YC-112	
T4	Retainer Clamp	42A736175					
	Retainer	42A736257					
	Plug	28K753330					
	Horiz. Output	24D65410A04-J			FLY-237		
	Alt. Horiz. Output	24D65410A04					
	Pri. & Sec. Coils (only)	24D65858A02					

* COMPONENT CONNECTION DATA

ORIGINAL →	HV TRANSFORMER	VERTICAL OUTPUT			YOKE			YOKE PLUG		
		Original Connections	Original Connections	Original Connections	Original Connections	Original Connections	Original Connections	Original Connections	Original Connections	Original Connections
REPLACEMENT	Original Connections	Blue	Green	Red	1	2	3	4	5	6
MERIT		Green	Red	Yel.	1	2	3	4	5	6
STANCOR		Blue	Yel.	Red						
THORDARSON		Blue	Red	Green	3	7	1	6	8	4
TRIAD		Blue	Red	Yel.	1	2	3	4	5	6

NOTE 1 No wiring change necessary. Remove black lead from plug pin #7.

TRANSFORMER (AUDIO OUTPUT)

ITEM No.	IMPEDANCE		REPLACEMENT DATA						NOTES
			MOTOROLA PART No.	Merit PART No.	Stancor PART No.	Thordorson PART No.	Triad PART No.		
	PRI.	SEC.							
T5	10.5 K	6-8Ω	25D65984A06	A-2900 ①	A-3823 ①	24S06 ①	S-53X ①		
			25D65984A03 ②	A-2900 ①	A-3823 ①	24S06 ①	S-53X ①		

① Drill new mounting hole(s).
② May be used in some versions.
(Use #25D65984A06 as replacement.)

SPEAKER

ITEM No.	TYPE	REPLACEMENT DATA		NOTES
		MOTOROLA PART No.	QUAM PART No.	
SP1	6" x 9" PM	50D650055A09	68A2Z8	Used in Models 23K63 Series.
SP2	4" x 9" PM	50D66232A02	4A07Z30	Used in Models 23K63 Series.
	4" x 9" PM	50D66232A01		Used in Models 23C10 Series.
	5 1/4" x 7 1/2" PM	50D751192		Used in Models 23K50 and 23K55 Series.
	5 1/4" x 7 1/2" PM	50K754478		Used in Models 23K56 and 23K57 Series.
	4" x 9" PM	50D66232A02		Used in Models 23K60/61/62/63/64/65/67/68 Series.
	5 1/4" x 7 1/2" PM	50D66232A02		Used in Models 23K60/61/62/63/67 Series.
	6" x 9" PM	50D65055A10		Used in Models 23K64 and 23K65 Series.
	6" x 9" PM	50K647115	4A1Z8	Used in Models 23K71 and 23K75/6/7/8 Series.
	5 1/4" x 7 1/2" PM	50D65058A08		Used in Models 23SF5/6/7 Series.
	5 1/4" x 7 1/2" PM	50D65265A03	52A1Z8	Used in Models 23SF5/6/7 Series.
	5 1/4" x 7 1/2" PM	50K84714	12A6PA	Used in Models 23SF8 Series.
	5 1/4" x 7 1/2" PM	50D6533A01		Used in Models 23T8 and 23T13 Series.
	5 1/4" x 7 1/2" PM	50D66306A02		Used in Models 23K68 Series.
	5 1/4" x 7 1/2" PM	50C6635A01	5A15T28	Used in Models 23C8 Series.
	5 1/4" x 7 1/2" PM	50K65055A11		
	5 1/4" x 7 1/2" PM	50K751799		

FUSES

ITEM No.	TYPE	RATING	REPLACEMENT DATA			
			MOTOROLA PART No.	LITTELFUSE PART No.	BUSS PART No.	
			FUSE	HOLDER	FUSE	HOLDER
M1	N	3/4A 250V S/B	65K754349	9K754348	333, 750 (3/4A S/B)	348010
M2	1 1/2" #28 wire					
M3	MTH	5A 250V	65A742612	31A737466	312005 (5A 250V)	357001

MISCELLANEOUS

ITEM No.	PART NAME	MOTOROLA PART No.	NOTES
M4	VHF Tuner	PTT-308B	STANDARD COIL REPLACEMENT #GY4630A
M5	Switch	40D66064A01	On-Off Push-Type, Chassis VTS, PTS-570
M6	Tube Sentry Unit ①	1B66235A01	UHF Pilot Lamp Switch, Chassis LTS, PTS-570Y
		6C746780	Thermal Switch and Thermistor (Thermistor 1450 Cold)
			① Not used in some versions.

CABINET PART NO.	MODEL NO.	CABINET PART NO.	MODEL NO.	CABINET PART NO.	MODEL NO.
16E65930A01	23C8M	16E66386A01	23K56M	16E66177A02	23K63W, Y
16E65930A02	23C8W	16E66386A02	23K56B	16E66298A01	23K64 Series
16E65930A03	23C8BW	16E66386A03	23K56W	16E66298A03	23K65 Series
16E66186A01	23C10M, Y	16E66386A04	23K56BW	16E66286A01	A23K67M
16E66186A02	23C10W, Y	16E65919A04	23K56CW	16E66286A02	A23K67W
16E66186A03	23C10BW, Y	16E66387A02	23K57B	16E66187A01	A23K68M
16E66186A04	23C10CW, Y	16E66387A01	23K57M	16E66187A02	A23K68W
16E66186A05	A23C11M	16E66387A03	23K57W	16E66187A03	A23K68BW
16E66186A06	A23C11W	16E66198A01	23K60M, Y	16E66167A01	23K71 Series
16E66186A07	A23C11BW	16E66198A02	23K60W, Y	16E66327A01	23SF5M, Y
16E66186A08	A23C11CW	16E66254A01	23K61 Series	16E66327A02	23SF5W, Y
16E65894A03	23K50 Series	16E66179A02	23K62B, Y	16E66285A03	23SF6BW, Y
16E65922A02	23K52W	16E66179A04	23K62BW, Y	16E66285A01	23SF6M, Y
16E66385A01	23K55M	16E66179A01	23K62M, Y	16E66285A02	23SF6W, Y
16E66385A02	23K55B	16E66179A03	23K62W, Y	16E66305A01	23SF7 Series
16E66385A03	23K55W	16E66177A03	23K63BW, Y	16E66215A01	23SF8W, Y
16E65893A05	23K55CW	16E66177A01	23K63M, Y		

CABINET PARTS

(When Ordering Cabinets & Cabinet Parts, Specify Model, Chassis & Color)

DESCRIPTION	PART NO.	MODEL NO.																						
		23 C8 & Y23 C8 Series	23 C10 & Y23 C10 Series	A23 C11 Series	23 K50 & Y23 K50 Series	23 K52 & Y23 K52 Series	23 K55 & Y23 K55 Series	23 K56 & Y23 K56 Series	23 K57 & Y23 K57 Series	23 K60 & Y23 K60 Series	23 K61 & Y23 K61 Series	23 K62 & Y23 K62 Series	23 K63 & Y23 K63 Series	23 K64 & Y23 K64 Series	23 K65 & Y23 K65 Series	A23 K67 Series	A23 K68 Series	23 K71 & Y23 K71 Series	23 SF5 & Y23 SF6 Series	23 SF6 & Y23 SF6 Series	23 SF7 & Y23 SF7 Series	23 SF8 & Y23 SF8 Series	A23 T8 Series	23 T13 & Y23 T13 Series
Safety Glass	61D65855A01	X	X	X	X	X	X	X	X	X	X	X	X	X	X	X	X	X	X	X	X	X	X	X
Bezel, VHF Models	13E65863A06	X			X	X																		
Bezel, UHF Models	13E65863A08	X			X	X																		
Bezel, VHF Models	13E66032A08		X	X																				
Bezel, UHF Models	13E66032A09		X	X																				
Bezel, VHF Models	13E66333A09						X	X	X															
Bezel, UHF Models	13E66333A11						X	X	X															
Bezel, Coppertone Bronze	13E66032A03									X		X	X	X	X		X							
Bezel, Tantone	13E66032A04										X	X	X				X							
Bezel, Coppertone Bronze	13E66032A08															X			X	X	X	X		
Bezel, Tantone	13E66032A09																	X		X				
Bezel	13E66333A07																							X
Bezel, VHF Models	13E66333A05																							X
Bezel, UHF Models	13E66333A06																							X
Knob, VHF Chan. Selector	36D65875A02	X			X	X																		X
Knob, Fine Tuning	36C65871A01	X			X	X																		X
Knob, UHF Chan. Selector	36D65906A01	X			X	X																		X
Knob, On-Off Volume, Optimizer, Brightness	36B65236A02	X			X	X																		
Knob, Contrast, Tone, Vert. Hold	36B65235A01	X			X	X																		
Knob, Vert. Hold (A versions)	36C65237A02	X			X																			
Knob, VHF Chan. Selector	36D66072A03		X	X						X	X	X	X	X	X	X	X							
Knob, Volume (VHF), UHF Chan. Selector	36D66072A01		X							X	X	X	X	X	X			X						
Knob, Contrast (VHF)	36C66073A01		X							X	X	X	X	X	X			X						
Knob, On-Off Vol., Optimizer (UHF)	36C66073A01		X							X	X	X	X	X	X			X						
Knob, Brightness, Vert. Hold	36K754480		X	X						X	X	X	X	X	X	X	X	X						
Knob, Optimizer (VHF), Contrast (UHF, "A" only)	36C66073A03		X																					
Knob, Tone (UHF Models)	36C66075A02		X							X	X	X	X	X	X			X						
Knob, Tone (VHF), Contrast (UHF)	36C66075A01		X							X	X		X	X	X			X						
Knob, On-Off Vol., Optimizer	36C66073A01			X												X	X							
Knob, Contrast, Tone (Shallow well)	36C66075A01			X												X	X							
Knob, Tone (Deep well)	36C66075A02			X												X	X							
Knob, VHF Chan. Selector	36D65709A02																							
Knob, Fine Tuning	36C65712A01						X	X	X															
Knob, UHF Chan. Selector	36D65906A02						X	X	X															
Knob, On-Off Vol., Brightn	36B65236A02						X	X	X														X	X
Knob, Contrast, Vert. Hold	36B65235A01						X	X	X														X	X
Knob, Optimizer, (VHF)	36C66073A03									X		X	X	X	X		X							
Knob, Balance	36D60203A35																	X						
Knob, Bass, Loudness, Treble	36D60203A34																	X						
Knob, Brightness (VHF), Vert. Hold	36C66267A01																		X	X	X	X		
Knob, Contrast (VHF, UHF), Vert. Hold (UHF)	36C66266A01																		X	X	X	X		
Knob, On-Off, Selector	36D60203A36																		X					
Knob, Optimizer (VHF, UHF), Brightness (UHF)	36C66267A04																		X	X	X	X		
Knob, VHF Chan. Selector	36D66072A05																		X	X	X	X		
Knob, UHF Chan. Selector	36C65264A03																		X	X	X	X		
Knob, On-Off, Selector	36C66267A03																			X	X	X		
Knob, Balance	36D60203A30																				X	X	X	
Knob, Bass, Loudness, Treble, Reverb	36D60203A31																			X	X	X		
Knob, Selector FM-AM Tuner	36D60203A19																					X		
Knob, Tuning FM-AM Tuner	36D60203A17																						X	
Knob, Fine Tuning	36C66347A01																							X

PARTS LIST AND DESCRIPTION

Replacement parts shown may be superseded by the availability of newly introduced replacements.
Have your local distributor check Sams COUNTER FACTS for the most up-to-date replacement.

WIRING DATA

High Voltage Lead	Use BELDEN No. 8889 (17KV) or 8888 (25KV)
Shielded Hook-up Wire	Use BELDEN No. 8885 (Single Conductor)
General-use Unshielded Hook-up Wire	Use BELDEN No. 8530 (Solid) Available in 12 Colors
Power Cord (Interlock Type)	Use BELDEN No. 8874 (Rubber) or 8895 (Plastic)
3000 Tuner Input Lead	Use BELDEN No. 8225
3000 Antenna Lead-in	Use BELDEN No. 8230 or 8275
Antenna Rotor Cable	Use BELDEN No. 8484 (Flat) or 8484 (Round) - 4 Conductor
	8485 (Round) - 5 Conductor
	8488 (Round) - 8 Conductor

TUBES

ITEM No.	USE	TYPE	ITEM No.	USE	TYPE
V1	1st Video IF Amp.	3BZ6 (3BZ6A) *	V7	Audio Detector	3DT6
V2	2nd Video IF Amp.	3BZ6	V8	Audio Output	6GK6
V3	3rd Video IF Amp. - Sync Limiter	6BL8 (6HL8) *	V9	Vert. Mult. - Vert. Output	6AQ5A
V4	Video Output	6GK6	V10	Horiz. AFC - Horiz. Osc.	6BL8 (6HL8) *
V5	AGC Keying - Sync Sep. - Noise Canceller	3BU6 (3GS8) *	V11	Horiz. Output	6DQ8B
V6	Sound IF Amp. - Vert. Mult.	6BL8 (6HL8) *	V12	Damper	6AF3 (6AL3) *
			V13	HV Rectifier	3A3 (3AW3) *
			V14	LV Rectifier	5U4GB (5DJ4) *

* Alternate

PICTURE TUBE

ITEM No.	MOTOROLA PART No.	GENERAL ELECTRIC PART No.	RCA PART No.	RAYTHEON PART No.	SYLVANIA PART No.	NOTES
V15	23AHP4 23BXP4 * 23YP4 *	23AHP4 ① 23BTP4/XP4/YP4 ①	23AHP4 ① 23YP4 ①		23AHP4 ② 23YP4 ②	① Aluminized ② Silver Screen "65" * Used in Chassis with Code "D". ▲ Used in Chassis with Code "A".

POWER RECTIFIERS & SIGNAL DIODES

ITEM No.	CURRENT RATING (Measured)	ORIGINAL Part or Type No.	RECTIFIERS RCA PART No.	SARKES TARZIAN PART No.	DIODES	NOTES
X1		48C65837A01				Video Detector

ELECTROLYTIC CAPACITORS

ITEM No.	RATING CAP. VOLT.	MOTOROLA PART No.	AEROVOX PART No.	CORNELL-DUBILIER PART No.	GENERAL ELECTRIC PART No.	MALLORY PART No.	PYRAMID PART No.	SPRAGUE PART No.
C1A	100 400	23C65807A03	AFH4-08-25	C0239	XC4-42	FP450.08	TD-80-450	TVL8-4683 *
C1B	80 400			BR10045		TC795	TMT 3805	
C1C	10 400							
C1D	10 400							
C2	5 300	23C65808A03	PRS 1800	BR435	QTL-4	TC80	TD-4-450	TVA-1601

* Not normally in distributor's stock. Available thru distributor on order to manufacturer.

FIXED CAPACITORS

ITEM No.	RATING	REMARKS	AEROVOX PART No.	CENTRALAB PART No.	CORNELL-DUBILIER PART No.	ELMENCOR PART No.	MALLORY PART No.	SPRAGUE PART No.
C3	470		BPD-00047	DD-471	BYA10T47	CCD-471	B-347	10TS-T47
C4	68	N150 10%						10TCP-Q68
C5	10	N150 ± 5mmf						10TCP-Q10
C6	10	N150 ± 5mmf						10TCP-Q10
C7	.001		BPD-001	DD-102	BYA10D1	CCD-102	B-210	5HK-D10
C8	.25	50V	P288N-25		CUB2P25	2CP-5-254	GEM-2025	2TM-P25
C9	.25	50V	P288N-25		CUB2P25	2CP-5-254	GEM-2025	2TM-P25
C10	470	2KV	BPD-00047	DD-471	BYA10T47	CCD-471	B-347	10TS-T47
C11	2.7	NFO ± 25mmf			C10V3C			10TCC-V27
C12	18	N150 10%						10TCP-Q18
C13	.75	10%						
C14	22	N150 10%						10TCP-Q22
C15	.001		EF-001	MFT-1000				
C16	.001		BPD-001	DD-102	BYA10D1	CCD-102	B-210	5HK-D10
C17	.001		BPD-001	DD-102	BYA10D1	CCD-102	B-210	5HK-D10
C18	800	10%	DI-820	DD-821	L10T8	CCD-801	GP382	10TS-T80
C19	.001	10%	DI-1000	DD-102	BYA10D1	CCD-102	GP210	10TS-D10
C20	800	10%	DI-820	DD-821	L10T8	CCD-801	GP382	10TS-T80
C21	10	N150 10%						10TCP-Q10
C22	.02		BPD-02	DD-203	BYB682	CCD-203	B-120	10TCP-Q10
C23	.001		DI-1000	DD-102	BYA10D1	CCD-102	GP210	10TS-D10
C24	.1	400V	P488N-1	DF-104	CUB4P1	4DP-3-104	GEM-401	4TM-P10
C25	47	N750 10%	N750-DI 47	DTN-47	C10Q47J	CTCN-470	CNT-447	10TCU-Q47
C26	.001	10%	DI-1000	DD-102	BYA10D1	CCD-102	GP210	10TS-D10
C27	.005		BPD-005	DD-503	BYA10D5	CCD-502	B-250	5HK-D50
C28	.01		BPD-01	DD-103	BYA10S1	CCD-103	B-110	5HK-S10
C29	.01		BPD-01	DD-103	BYA10S1	CCD-103	B-110	5HK-S10
C30	470		BPD-00037	DD-471	BYA10T47	CCD-471	B-347	10TS-T47
C31	.0015		BPD-0015	DD-152	BYA10D15	CCD-152	B-215	5HK-D15
C32	.0015		BPD-0015	DD-152	BYA10D15	CCD-152	B-215	5HK-D15
C33	.0027		DI-2700	DD-272	BYA10D27	CCD-272	B-227	5HK-D25
C34	.02	800V	P688N-02	DD-203	CUB682	6CP-3-203	DEM-612	6TM-S20
C35	330	N750 10%	N750-DI 330	DTN-330	C10T33U		CN7-333	10TCU-T33

FIXED CAPACITORS (cont)

ITEM No.	RATING	REMARKS	AEROVOX PART No.	CENTRALAB PART No.	CORNELL-DUBILIER PART No.	ELMENCOR PART No.	MALLORY PART No.	SPRAGUE PART No.
C36	.01		BPD-01	DD-103	BYA10S1	CCD-103	B-110	10TS-D10
C37	.0033		BPD-0033	DD-332	BYA10D33	CCD-332	B-233	5HK-D33
C38	.006	400V 10%	BE6D6		PM6D6	6DP-1-602	GEM-1626	6PS-D60
C39	.01	600V 10%	BE6S1		PM6S1	6DP-2-103	GEM-1611	6PS-S10
C40	.05	600V	P688N-05	DF-503	CUB685	6CP-4-503	GEM-615	6TM-S50
C41	.1	200V	P288N-1	DF-104	CUB2P1	2DP-3-104	GEM-201	2TM-P10
C42	.02	600V	P688N-02		CUB6S2	6CP-3-203	GEM-612	6TM-S20
C43	.02		BPD-02	DD-203	BYB682	6CP-3-203	B-120	5HK-S20
C44	.05	400V	P488N-05	DF-503	CUB4S5	4CP-4-503	GEM-415	4TM-S50
C45	.005	2000V		DD-502	HVC20D5		2HV-247	BL-D50
C46	.0088		BPD-01	DD-103	BYA10S1	CCD-103	B-268	5HK-D68
C47	.01		BE6D39		PM6D39	6DP-1-392	GEM-1624	6PS-D39
C48	.0039	400V 10%	P288N-5		CUB2P5	2CP-4-104	GEM-205	2TM-P50
C49	.5	100V	BE6D7		PM6D68	6DP-1-602	GEM-1627	6PS-D68
C50	.007	200V 10%	BE6D33		PM6D33	6DP-1-332	GEM-16233	6PS-D33
C51	.0033	200V 10%	DI-470	DD-471	5R5T47	CCD-471	GP347	10TS-T47
C52	470	10%	P288N-1	DF-104	CUB2P1	2DP-3-104	GEM-201	2TM-P10
C53	.1	200V	DI-1000	DD-102		CCD-102	GP210	10TS-D10
C54	.001	10%	BPD-005		BYA10D5	CCD-502	B-250	5HK-D50
C55	.005	1000V	P488N-1	DF-104	CUB4P1	4DP-3-104	GEM-401	4TM-P10
C56	.1	400V	P688N-1	DF-104	CUB6P1	6DP-4-104	GEM-601	6TM-P10
C57	.1	600V	P688N-1	DF-104	CUB6P1	6DP-4-104	GEM-601	6TM-P10
C58	.1	600V	P488N-05	DF-503	CUB4S5	4CP-4-503	GEM-601	4TM-S50
C59	.05	400V						
C60	91	3000V N1500 10%						
C61	91	3000V N1500 10%						
C62	75	3000V N1500						

† Alternate Value

■ Part of Quadrature Coil Assembly in some versions.
* Not normally in distributor's stock. Available thru distributor on order to manufacturer.

CONTROLS

All wattages 1/2 watt, or less, unless otherwise listed.

ITEM No.	USE	RESISTANCE	MOTOROLA PART No.	CENTRALAB PART No.	CLAROSTAT PART No.	CTS-IRC PART No.	MALLORY PART No.
R1	Volume	2meg	18D65083A18 (1)	B-76, or (F2-2meg, SU204)	A47-2meg-Z, FS-3	Q13-138, or (BU2, CF27, SS1, DC1) *	U55, or (UA26A, SL3500)
	Contrast, Volume, Power On-Off Switch	350Ω	18D65082A18 (2)	F1-300, FFS101, R2-2meg, RFS108, KR-1	RTV-753	QJ-1455 (14)	UE4330-S (25)
	Tone, Volume, Power On-Off Switch	1meg	18D65082A22 (3)	F2-1meg, FFS101, F2-2meg, RFS112, KR-1	RTV-740	QJ-1451 (15)	UE4280 (26)
	Tone, Volume, Power On-Off Switch	1meg	18D65082A01 (4)	F2-1meg, FFS101, F2-2meg, RFS108, KR-1	RTV-715	QJ-1378 (16)	UE4148-S (27)
	Tone, Volume, Power On-Off Switch	1meg	18D65082A09 (5)	F2-1meg, FFS101, RPS-68		QJ-1475 (17)	UE4362-S (28)
R2A	Tone, Contrast	1meg	18D65082A10 (1)	F2-1meg, FFS101, RI-500, RFS112	RTV-758	QJ-1476 (18)	UE4361 (29)
	Tone	1meg	18D65216A23 (6)	TT-70	B47-1meg-Z	B13-137, TM4, or (BU11, CF26, SS8) *	PTA1254L
	Contrast, Optimizer	350Ω	18D65082A18 (4)	F1-300, FFS101, RI-7500, RFS109	RTV-754	QJ-1457 (19)	UE4331 (30)
	Contrast, Optimizer	350Ω	18D65082A20 (7)	F1-300, FFS101, RI-7500, RFS107	RTV-755	QJ-1444 (20)	UE4338 (31)
	Contrast, Optimizer	350Ω	18D65082A21 (8)	F1-300, FFS101, RI-7500, RFS112	RTV-759	QJ-1477 (21)	UE4284 (32)
	Contrast, Brightness	350Ω	18D65082A08 (10)	F1-300, FFS101, RI-100K, RFS109	RTV-738	QJ-1401 (22)	UE4271 (33)
R3	Optimizer	7000Ω	18D65083A23 (1)	F1-7500, SU204	A47-7500-S, FS-3	Q17-116, or (BU2, CF35, SS1, DC1) *	U20, or (UA14L, SL3500)
	Optimizer	7000Ω	18D65216A24 (2)	TT-14		B17-116, TM4, or (BU11, CF35, SS8) *	U19, or (UA14R, SN1000)
R4	Vertical Hold	2meg	18D65216A18 (9)	TT-75	A47-2meg-S, FS-3	BU11-139, TM5, or (BU11, CF19, SS1, DC1) *	TA26L, or (U56)
	Vertical Hold	2meg	18D65083A19 (10)	B-75, or (F1-2meg, SU204)	A47-2meg-S, FS-3	Q11-139, or (BU2, CF19, SS1, DC1) *	U58, or (UA26L, SF1000)
R5	Brightness	100K	18D65216A17 (9)	B-40, or (F1-100K, SU204)	A47-100K-S, KSS-3	B11-128, TM5, or (BU11, CF13, SS1, DC1) *	TA15L, or (U41)
	Brightness	100K	18D65083A20 (10)	B-40, or (F1-100K, SU204)	A47-100K-S, FS-3	Q11-128, or (BU2, CF13, SS1, DC1) *	U41, or (UA15L, SF1000)
	Vertical Hold, Brightness	2meg	18D65082A12 (11)	F1-2meg, FFS101, RI-100K, RFS107	P-2meg-S, FP-015, R-100K-S, FR-107	QJ-1458 (23)	UE4332 (34)
	Vertical Hold, Brightness	2meg	18D65082A02 (12)	F1-2meg, FFS101, RI-100K, RFS109	RTV714	QJ-1450 (24)	UE4149 (35)
R6	Vertical Linearity	2meg	18K743523	TT-75	B47-2meg-S	HLC-1	PTA26L
R7	Vertical Size (Height)	4meg	18K743524	TT-86, or (F1-4meg, SN1010)	B47-5meg-S	HLC-4	PTA56L, or (TA56L)

CONTROLS (cont)

All wattages 1/2 watt, or less, unless otherwise listed.

ITEM No.	USE	RESISTANCE	REPLACEMENT DATA PART No.	CENTRALAB PART No.	CLAROSTAT PART No.	CTS-IRC PART No.	MALLORY PART No.
R8	Horizontal Size	10K	17D65820A03				
R9	Noise Gate	4meg	18K740694	TT-86	B47-4meg-S	HLC-4	PTA56L

(1) Used in Chassis VTS, PTS-570.

(2) Used in Chassis VTS, PTS-570.

(3) Used in Chassis VTS, PTS-570.

(4) Used in Chassis VTS, PTS-570.

(5) Used in Chassis VTS, PTS-570.

(6) Used in Chassis VTS, PTS-570.

(7) Used in Chassis VTS, PTS-570.

(8) Used in Chassis VTS, PTS-570.

(9) Used in Chassis VTS, PTS-570.

(10) Used in Chassis VTS, PTS-570.

(11) Used in Chassis VTS, PTS-570.

(12) Used in Chassis VTS, PTS-570.

(13) File flat.

(14) "CONCENTRIKIT" Equivalent: K-6 Kit with Base Elements and Shafts: B11-103, P22-103 (Panel), B13-139, R1-115, 76-1 (Rear)

(15) "CONCENTRIKIT" Equivalent: K-6 Kit with Base Elements and Shafts: B13-137, P23-103 (Panel), B13-139, R9-121, 76-1 (Rear)

(16) "CONCENTRIKIT" Equivalent: K-6 Kit with Base Elements and Shafts: B13-137, P23-103 (Panel), B13-139, R1-115, 76-1 (Rear)

(17) "CONCENTRIKIT" Equivalent: K-6 Kit with Base Elements and Shafts: B13-137, P23-103 (Panel), B13-139, R23-202 (13)(Rear)

(18) "CONCENTRIKIT" Equivalent: K-6 Kit with Base Elements and Shafts: B13-137, P23-100 (Panel), B11-103, R26-121 (Rear)

(19) "CONCENTRIKIT" Equivalent: K-6 Kit with Base Elements and Shafts: B11-103, P22-103 (Panel), B17-116, R1-115 (Rear)

(20) "CONCENTRIKIT" Equivalent: K-6 Kit with Base Elements and Shafts: B11-103, P23-100 (Panel), B17-116, R1-113 (Rear)

(21) "CONCENTRIKIT" Equivalent: K-6 Kit with Base Elements and Shafts: B11-103, P23-103 (Panel), B17-116, R26-121 (Rear)

(22) "CONCENTRIKIT" Equivalent: K-6 Kit with Base Elements and Shafts: B11-103, P22-103 (Panel), B11-128, R1-115 (Rear)

(23) "CONCENTRIKIT" Equivalent: K-6 Kit with Base Elements and Shafts: B11-103, P22-100 (Panel), B11-128, R1-111 (Rear)

(24) "CONCENTRIKIT" Equivalent: K-6 Kit with Base Elements and Shafts: B11-103, P22-103 (Panel), B11-128, R1-115 (Rear)

(25) "STA-LOC" Equivalent: FA351L, OF1062, RU26A, IS1562, US41.

(26) "STA-LOC" Equivalent: FA16A, OS1062, RU26A, IS1750, US41.

(27) "STA-LOC" Equivalent: FA16A, OS1062, RU26A, IS1562, US41.

(28) "STA-LOC" Equivalent: FA16A, OS1062, RU26A, IS1750, US41.

(29) "STA-LOC" Equivalent: FA16A, OS1062, RU26A, IS1750, US41.

(30) "STA-LOC" Equivalent: FA351L, OF1062, RU73A, IS1562, US41.

(31) "STA-LOC" Equivalent: FA351L, OS937A, RU73A, OF1437, US41.

(32) "STA-LOC" Equivalent: FA351L, OS1062, RU73A, IS1750, US41.

(33) "STA-LOC" Equivalent: FA351L, OS1062, RU15L, IS15