

PARTS LIST AND DESCRIPTIONS (Continued)

COILS (RF-IF)

ITEM No.	USE	REPLACEMENT DATA						NOTES
		ARVIN PART No.	Granger PART No.	Meisner PART No.	Merit PART No.	Miller PART No.	Rem PART No.	
L1	Loop Antenna	46519-1 ①						
L2	Osc. Coil	43844-1			BC-356	13-PC9	RF-4	
L3	Input IF	44282-1	16-6780	16-6780	BC-357	13-PC10	RF-4	
L4	Output IF	44282-1	16-6780	16-6780				

① Includes rear cover.

TRANSFORMER (AUDIO OUTPUT)

ITEM No.	IMPEDANCE	REPLACEMENT DATA						NOTES
		ARVIN PART No.	Halderson PART No.	ARVIN PART No.	Rem PART No.	Stencor PART No.	Thorndson PART No.	
T1	2700Ω 3-4Ω	42700-2I	24553	A-3025	AU-605	A-3332	24553	S-12X

SPEAKER

ITEM No.	TYPE	REPLACEMENT DATA		NOTES
		ARVIN PART No.	QUAM PART No.	
SP1	SIZE 3½" FIELD 3-4Ω PM 3-4Ω	46523-1 *	4A07	* Includes TL.

MISCELLANEOUS

ITEM No.	PART NAME	ARVIN PART No.	NOTES
M1	Tuning Cap.	45252-1	2 Gang
M2	Clock	46524-061	

CABINETS & CABINET PARTS

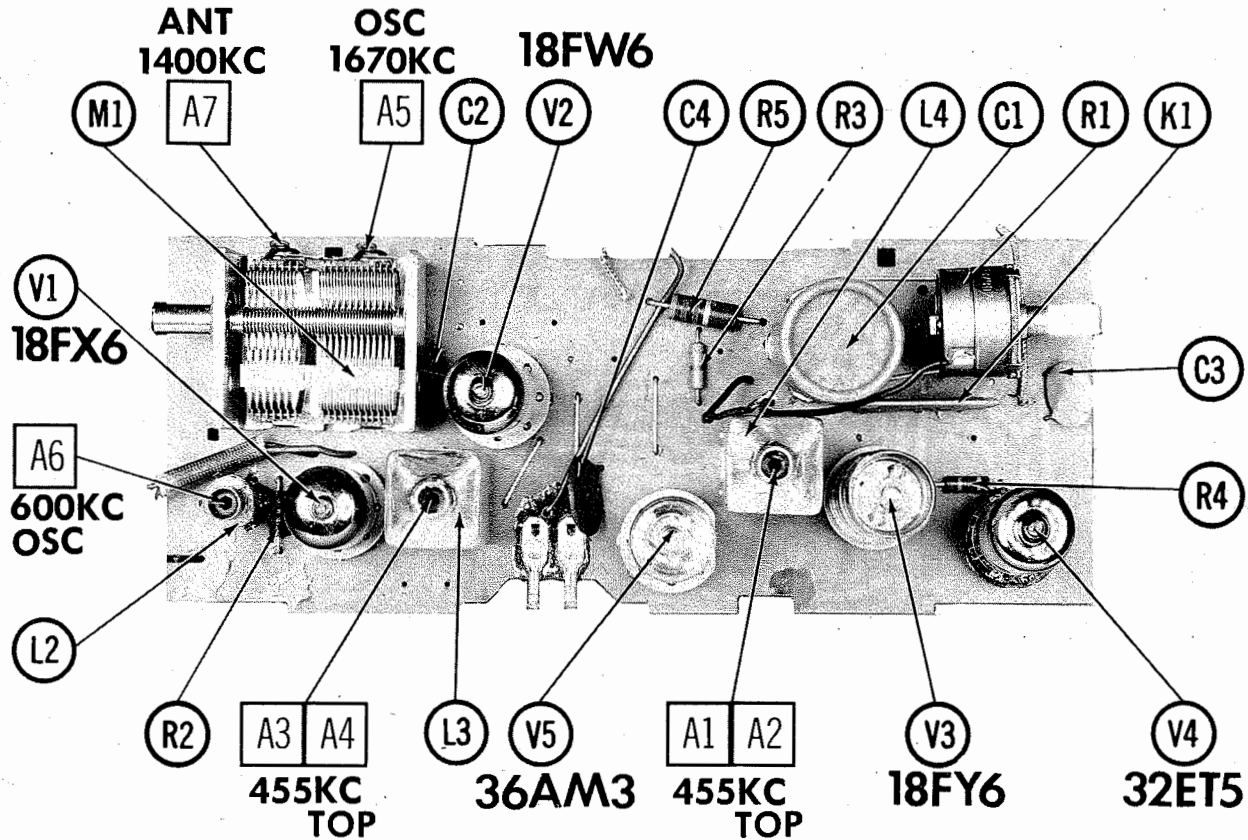
(When Ordering Cabinets & Cabinet Parts, Specify Model, Chassis & Color)

NAME	PART NO.	DESCRIPTION
Knob	46517-67	Tuning
Knob	46518-67	Volume
Knob	46526-671	Clock
Cabinet	46516-19	Charcoal
Cabinet	46516-86	Green
Clock Crystal	46527	
Clock Hand	46540-67	Hour
Clock Hand	46541-67	Minute
Clock Hand	46542-33	Second
Clock Hand	46543-33	Alarm Set

WIRING DATA

General-use Unshielded Hook-up Wire ..... Use Belden No. 8530 (Solid) Available in Ten Colors  
 Power Cord (Interlock Type) ..... Use Belden No. 8874

CHASSIS—TOP VIEW

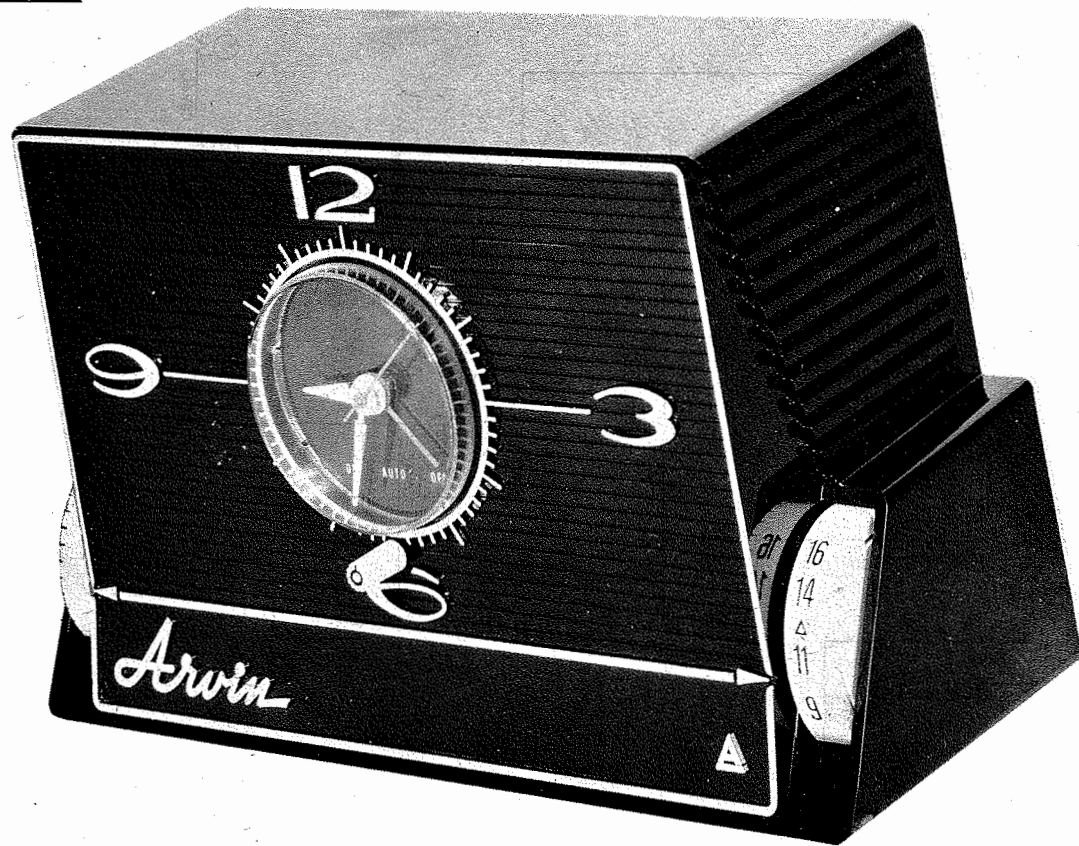


FOLDER 5  
SET 473



ARVIN MODEL  
5591 (Ch. 1.46700)

ARVIN MODEL  
5591 (Ch. 1.46700)



ARVIN MODEL  
5591 (Ch. 1.46700)

TRADE NAME Arvin Model 5591 (Ch. 1.46700)  
 MANUFACTURER Arvin Industries, Inc., Columbus, Indiana  
 TYPE SET AC Operated 5 Tube AM Receiver with Electric Clock

POWER SUPPLY 110-120 Volts AC, 60 Cycles  
 TUNING RANGE—BROADCAST 540 - 1670KC  
 RATING 20 Watts, .23 Amp. @ 117 Volts AC (Less Clock)

ALIGNMENT INSTRUCTIONS

ALIGNMENT INSTRUCTIONS—READ CAREFULLY BEFORE ATTEMPTING ALIGNMENT

Use isolation transformer, if available. If not, connect a .1mfd capacitor in series with low side of signal generator. Volume control should be at maximum position. Output of signal generator should be no higher than necessary to obtain an output reading.

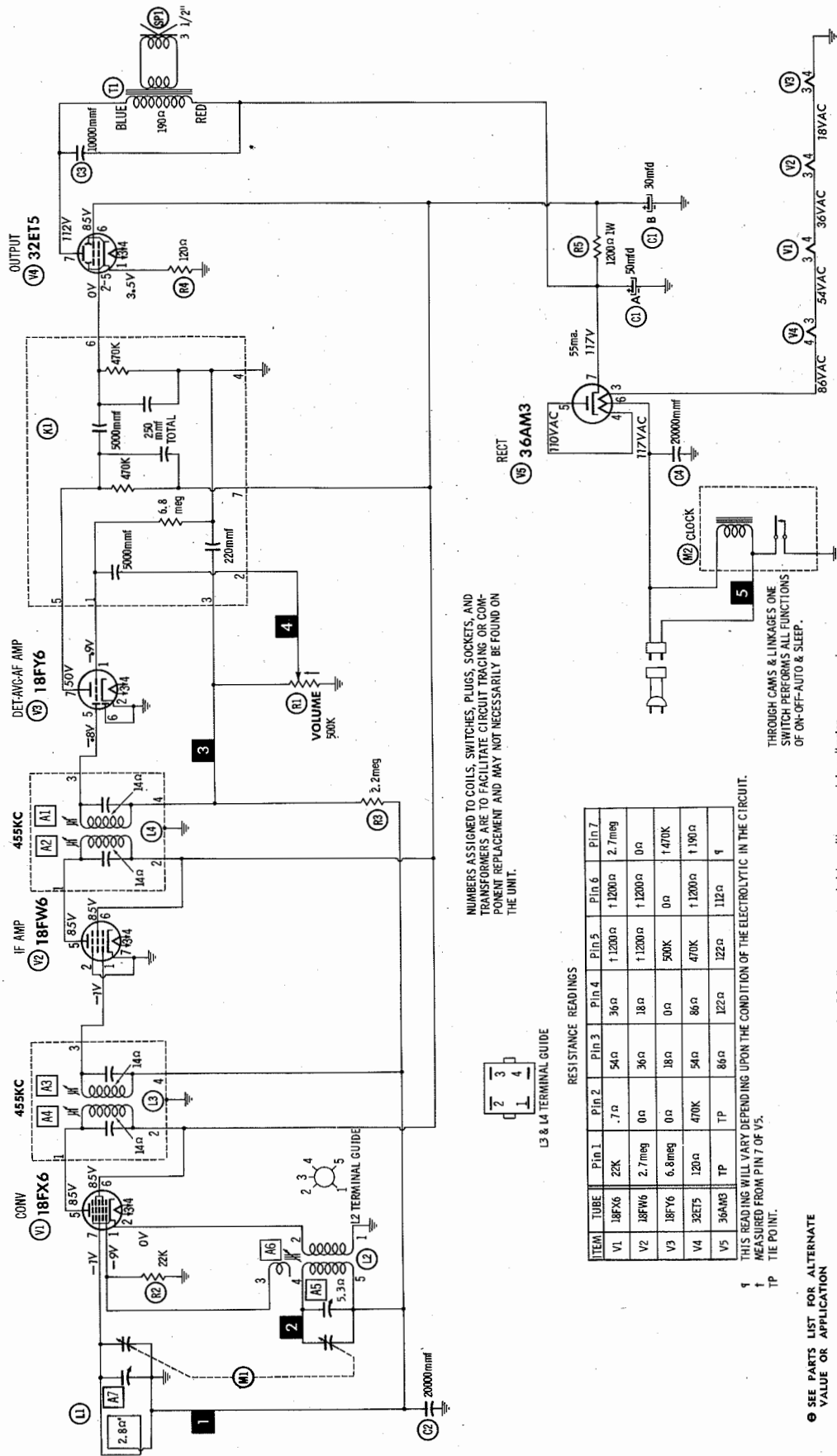
Suggested Alignment Tools: A1 thru A4, A6 ..... GENERAL CEMENT #8282, 8606, 8606L, 9295  
 WALSCO #2526, 2543, 2544, 2545  
 A5, A7 ..... GENERAL CEMENT #5004, 5008, 5009  
 WALSCO #2520

DUMMY ANTENNA	SIGNAL GENERATOR COUPLING	SIGNAL GENERATOR FREQUENCY	RADIO DIAL SETTING	OUTPUT METER	ADJUST	REMARKS
1. .1mfd	High side to pin 1 (grid) of Converter. Low side to chassis.	455KC (400v Mod.)	Tuning gang fully open	Across voice coil	A1, A2, A3, A4	Adjust for maximum output.
2.	Loop	1670KC	"	"	A5	Fashion loop of several turns of wire and radiate signal into loop of receiver. Adjust for maximum output.
3.	"	600KC	600KC	"	A6	"
4.	"	1400KC	Tune to 1400KC signal	"	A7	Adjust for maximum output while rocking tuning gang.

HOWARD W. SAMs & CO., INC. Indianapolis 6, Indiana

The listing of any available replacement part herein does not constitute in any case a recommendation, warranty or guaranty by Howard W. Sams & Co., Inc., as to the quality and suitability of such replacement part. The numbers of these parts have been compiled from information furnished to Howard W. Sams & Co., Inc., by the manufacturers of JG498

the particular type of replacement part listed. Reproduction or use, without express permission, of editorial or pictorial content, in any manner, is prohibited. No patent liability is assumed with respect to the use of the information contained herein. © 1960 Howard W. Sams & Co., Inc., Indianapolis 6, Indiana. Printed in U.S. of America



ARVIN MODEL  
5591 (Ch. 1.46700)

PARTS LIST AND DESCRIPTIONS

CBS		GENERAL ELECTRIC		RAYTHEON		SYLVANIA	
ITEM No.	USE	TYPE	ITEM No.	USE	TYPE	ITEM No.	TYPE
V1	Converter	18FX6 (12BE6) *	V4	Output Rectifier	32ET5 (50C5) *		
V2	IF Amplifier	18FW6 (12BA6) *	V5		36AM3 (35W4) *		
V3	Det. - AVC - AF Amp.	18FY6 (12AV6) *					

\* 300MA Filament Equivalent.  
Replacing with a 300MA equivalent, necessitates replacing all tubes with 300MA equivalent.

ELECTROLYTIC CAPACITORS

ITEM No.	RATING CAP.	VOLT.	REPLACEMENT DATA				NOTES
			ARVIN PART No.	AEROVOX PART No.	CORNELL-DUBILER PART No.	MALLORY PART No.	
C1A	50	150	44328-4	PRS2200	BDRD3315	WD210	TDL-8
B	30	150					

FIXED CAPACITORS

ITEM No.	RATING	REMARKS	REPLACEMENT DATA				SPRAGUE PART No.
			AEROVOX PART No.	CENTRALAB PART No.	ELMICO PART No.	MALLORY PART No.	
C2	20000		BPD-02	DD-203	BYBRS2	CCD-203	B-120
C3	10000		BPD-01	DD-103	BYA10S1	CCD-103	B-110
C4	20000		BPD-02	DD-203	BYBRS1	CCD-203	B-120

CONTROLS

ITEM No.	RATING RESIST.	WATTS	REPLACEMENT DATA				INSTALLATION NOTES
			ARVIN PART No.	CENTRALAB PART No.	CLAROSTAT PART No.	CTS-IRC PART No.	
R1	500K	1/2	45250-15				Volume

RESISTORS

ITEM No.	RATING	REMARKS	ITEM No.	RATING	REMARKS	ITEM No.	RATING	REMARKS
R2	22K		R4	120Ω		R5	1200Ω 1W	
R3	2.2meg							

COMPONENT COMBINATIONS

ITEM No.	USE	DESCRIPTION	ARVIN PART No.	REPLACEMENT DATA
X1	Detector-Audio Coupling	250mmf (Total), 220mmf, 5000mmf, 5000mmf, 470K, 470K, 6.8meg	43743-2	Aerovox Centralab Sprague PA-512-3 PC-158 DT-5

PRINTED BOARD

A Howard W. Sams CIRCUITRACE Photo

ARROWS INDICATING TUBE LOCATIONS ARE POINTING TO PIN 1 UNLESS OTHERWISE INDICATED

