

X5	48287	1N285	1N285	1T16
X6	48287-4	1N542 ②		
X7	48287-4			
X8	2002200-2			

① Variable capacitor diode. ② Matched pair of 1N541's.

ELECTROLYTIC CAPACITORS

ITEM No.	RATING	REPLACEMENT DATA				
		AEROVOX PART No.	CENTRALAB PART No.	CORNELL-DUBILIER PART No.	GENERAL ELECTRIC PART No.	SPRAGUE PART No.
C1A	500 35V	AFH2-05-65①	EA50-500 & EA50-500	BR500-50 & BR500-50	QT1-31 & QT1-31	TL-1316 & TL-1316
C2	500 10V	BCD12500	EA50-500	BR500-50	QT1-30	TL-1141
C3	10 25V	BCD25010	EP50-5	BR500-50	MT1-5	TE-1204
C4	2 25V	BCD25002	EP50-2	NLW2-50	MT1-1	TL-1201
C5	2 10V	49385-10	EP50-2	NLW2-50	MT1-1	TL-1121
C6	2 10V	BCD12002	EP50-2	NLW2-50	MT1-1	TL-1201
C7	2 25V	BCD25025	EP50-2	NLW2-50	MT1-1	TL-1201
C8	30 25V	BCD25025	EP80-25	NLW30-25	MT1-14	MTV30CB25
C9	2 25V	BCD25002	EA15-50	NLW50-15	MT1-16	MTV30CB50
C10	50 15V	CRB467A	EA15-50	NLW50-15	MT1-16	TE-1160
C11	10 25V	BCD25010	EP80-10	NLW10-25	MT1-5	TE-1204
C12	100 35V	PTT137	EA50-100	BR100-50	QT1-23	TE-1309
C13	10 35V	BCD50010	EP50-10	NLW10-50	MT1-6	TE-1304

① Use PC mounting kit.

CAPACITORS

ITEM No.	RATING	REMARKS	REPLACEMENT DATA				
			AEROVOX PART No.	CENTRALAB PART No.	CORNELL-DUBILIER PART No.	ELWENCO PART No.	MALLORY PART No.
C20	.02 50V		TTD-02	DTZ-RR8	HOR101ZV203P	CCD-203	TA120
C21	6.8 NPO		NPO-DI 6.8		CZ601CH8R8D	CCTO-6R8	CNO68
C22	5.6 NPO						
C23	.02 50V		TTD-02	CK-203	HOR101ZV203P	CCD-203	TA120
C24	.02 50V		TTD-02	CK-203	HOR101ZV203P	CCD-203	TA120
C25	.02 50V		TTD-02	CK-203	HOR101ZV203P	CCD-203	TA120
C26	15 NPO		NPO-DI 15	DTZ-15	CZ601CG150J	CCTO-150	CNO415
C27	2.5 NPO		NPO-DI 2.2	DTZ-2R2	CZ601CJ2R2D	CCTO-2R2	CNO522
C28	1.5						
C29	.02 50V		TTD-02	CK-203	HOR101ZV203P	CCD-203	TA120
C30	15		DI-15	DD-150		CCD-150	GP415
C31	.02 50V		TTD-02	CK-203	HOR101ZV203P	CCD-203	TA120
C32	120	10%	DD-120	DD-121	JBZ601YP121K	CCD-121	GP312
C33							
C34	11 N750	(12)†	N750-DI 10	DTN-10	CZ601UJ100J	CCTN-100	CN7410
C35	15		NPO-DI 15	DTZ-15		CCTO-150	CNO415
C36	.02 50V		TTD-02	CK-203	HOR101ZV203P	CCD-203	TA120
C37	.02 30V		TTD-02	CK-203	HOR101ZV203P	CCD-203	TA120
C38	10 NPO	(8.2)†	NPO-DI 10	DTZ-10	CZ601CG100J	CCTO-100	CNO410
C39	10 NPO		NPO-DI 10	DTZ-100J	CZ601CG100J	CCTO-100	CNO410
C40	130 300V	10%	ADM-13-131	CPR-130J	CD19F1223500	DM-13-131J	SX513
C41	.0012 125V	10%	TTD-005	CPR-1200J	CD19F1223500	CCD-1200	SX312
C42	.0012 25V	10%	TTD-005	CPR-680J	CD19F681500P	DM-18-681J	SX368
C43	680 125V	10%	TTD-01	CK-103	HOY101ZV103P	CCD-103	TA110
C44	.01 15V		TTD-02	CK-203	HOY101ZV203P	CCD-203	TA120
C45	.02 25V		TTD-05	CK-503	HOY101ZV503Z	DM-18-122J	SX212
C46	.05 25V	10%	TTD-05	CK-503	HOY101ZV503Z	DM-18-122J	SX212
C47	.0012 125V	10%	TTD-02	CK-203	HOY101ZV203P	CCD-203	TA120
C48	.02 25V		TTD-05	CK-502	HOY101ZV502P	CCD-502	TA120
C49	.005 25V		TTD-05	CK-503	HOY101ZV503Z	CCD-502	TA120
C50	.05 25V		TTD-05	CK-503	HOY101ZV503Z	CCD-502	TA120
C51	16 NPO		NPO-DI 15	DTZ-15	CZ601CG150J	CCTO-150	CNO415
C52	.01 25V		TTD-01	CK-103	HOY101ZV103P	CCD-103	TA110
C53	.02 25V		TTD-02	CK-203	HOY101ZV203P	CCD-203	TA120
C54	.005 25V		TTD-05	CK-502	HOY101ZV502P	CCD-502	TA250
C55	.005 25V		TTD-05	CK-502	HOY101ZV502P	CCD-502	TA250

ITEM No.	USE	REPLACEMENT DATA		
		PART No.	MEISSNER PART No.	MILLER PART No.
L1	FM Antenna	①		
L2	FM RF	①		
L3	10.7MC Trap	①		
L4	FM IF Input	①		
L5	FM Oscillator	①		
L6	FM Interstage IF	49386-21		
L7	FM Interstage IF	49388-21		
L8	FM Detector	96535-1		
L9	Radio Detector	46861-22		
L10	Leaslick	45789-37		
L11	AM Oscillator	49388-18		
L12	AM Input IF	49388-24		
L13	AM Interstage IF	49388-35		
L14	Line Choke (2.6uh)	49515-1	16-9028	8518
L15	Line Choke (2.6uh)	49515-1		4606

① Part of FM Tuner (M1) Part Number 69950-1

TRANSFORMER (POWER)

ITEM No.	RATING	REPLACEMENT DATA			
		ARVIN PART No.	AMERIT PART No.	STANCOR THORDARSON PART No.	NOTES
T1	SEC. 1 SEC. 2 117VAC @ .071A AC 22.4VAC @5.4 DC Tapped VAC @ .15A AC	46070-30			

SPEAKER

ITEM No.	TYPE	REPLACEMENT DATA			NOTES
		ARVIN PART No.	JENSEN PART No.	QUAM PART No.	
SP1	5" PM	45599-21		5A1Z18	

MISCELLANEOUS

ITEM No.	PART NAME	PART No.	NOTES
M1	Tuner Integrated Circuit	69950-1	FM (Complete)
M2	Printed Circuit Board	95293-1	Audio Output & Associated Components
S1	Switch	95644-15	Function
	Printed Circuit Board	93066-1	Complete (Chassis 1.33301, 1.33501)
	Printed Circuit Board	99900-1	Complete (Chassis 1.33401, 1.33601)
	Printed Circuit Board	94546	Less Components (All Chassis)

CABINETS & CABINET PARTS

(When Ordering Specify Model, Chassis & Color)

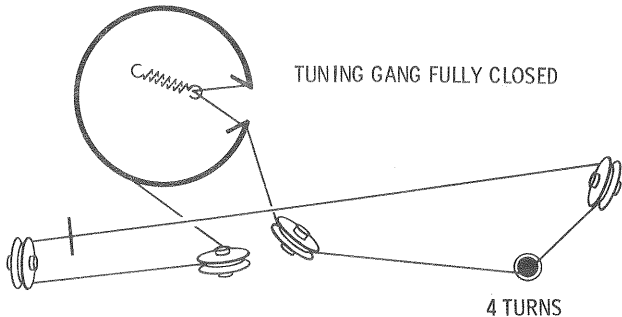
ITEM	MODELS	PART No.	ITEM	MODELS	PART No.
Cabinet, Front	38R48, 38R68	2000116-67	Cabinet, Walnut Wood	48R68	2001178-1
Cabinet, Back	38R48	69951-388	Cabinet, Walnut Grain	48R48	69851-288
Knob, Tuning, Tone, Volume	38R68	2001178-2	Knob, Clock		49885-1
Knob, Function		2000119-1	Knob, Doze		69926-8
Cabinet, Front, Off White	48R68, 48R48	69946-67	Knob, Repeat	48R48	69926-1



The listing of any available replacement part herein does not constitute in any case a recommendation, warranty or guaranty by Howard W. Sams & Co., Inc., as to the quality and suitability of such replacement part. The numbers of these parts have been compiled from information furnished to Howard W. Sams & Co., Inc., by the manufacturers of the particular type of replacement part listed. SN585

HOWARD W. SAMs & CO., INC. Indianapolis, Indiana 46206

DIAL CORD STRINGING



SET 949 FOLDER 4

ARVIN CHASSIS
1.33301, 1.33401, 1.33501, 1.33601

PHOTOFACT® Folder

with CIRCUITRACE®

ARVIN CHASSIS
1.33301, 1.33401, 1.33501, 1.33601



TRADE NAME: Arvin

MODELS
38R48
38R68
48R48
48R68

CHASSIS
1.33501
1.33301
1.33401
1.33601

SUPPLIER: For Current Address, See Annual Index

TYPE SET: 8-Transistor AM-FM Receiver

POWER SUPPLY: 110-120 Volts AC, 60 Cycles RATING: 7 Watts, .071 Amp. @ 117 Volts AC (Less Clock)

TROUBLESHOOTING THE SOUND STRIP IC (M2).

Before suspecting the integrated circuit (IC), eliminate the possibility of trouble in the other audio portions by checking for the presence of an audio signal at terminal 1 of the IC. Check C12, the speaker and IC related components. If this checks out, measure the voltages at the IC terminals, giving special attention to the supply voltage and current at terminal 10. Suspicious-looking measurements may indicate a short or other defects within the IC.

ARVIN CHASSIS
1.33301, 1.33401, 1.33501, 1.33601

SET 949 FOLDER 4

DATE 4 -68 SET 949 FOLDER 4

PARTS LIST AND DESCRIPTION
(When ordering parts, state Model, Part Number, and Description.)

WIRING DATA

General-use Unshielded Hook-up Wire Use Belden No. 8530 (Solid) Available in 12 Colors
..... Use Belden No. 8524 (Stranded) Available in 12 Colors

TRANSISTORS

ITEM No.	ORIG. TYPE	USE	REPLACEMENT DATA				NOTES
			DELCO PART No.	ELECTRIC PART No.	RECTIFIER PART No.	GENERAL INTERNATIONAL PART No.	
Q1	2SA240 (2SA435)	FM RF Amp	DS-41	TR-17	SK-3006	ARVIN PART No.	PNP
Q2	2SA240	FM Mixer	DS-41	TR-17	SK-3006		PNP
Q3	2SA240 (2SA235)	FM Oscillator	DS-41	TR-17	SK-3006		PNP
Q4	(2SA235)	AM Converter	DS-25	GE-1	SK-3008	99101	PNP
Q5		1st AM-FM IF Amp	DS-56	GE-9	SK-3006	95120	PNP
Q6		2nd AM-FM IF Amp	DS-56	GE-9	SK-3006	95121	PNP
Q7		3rd AM-FM IF Amp	DS-56	GE-9	SK-3006	95120	PNP
Q8		AF Amp	DS-26	GE-2	SK-3004	99217	PNP

POWER RECTIFIERS & SIGNAL DIODES

ITEM No.	MEASURED CURRENT	ORIGINAL Part or Type No.	RECTIFIERS & DIODES		
			GENERAL ELECTRIC PART No.	INTERNATIONAL RECTIFIER PART No.	RECTIFIER PART No.
X1	.054A	47126-3	GE-504A	8D4 or 5A4-D	SK-3016 or SK-3017A
X2		1S351 ①	IN295	IN295	
X3		48287	IN295	IN295	
X4		48287	IN295	IN295	
X5		48287	IN295	IN295	
X6		48287-4		IN542 ②	
X7		48287-4			
X8	.03A	2002209-2			1T16

① Variable capacitor diode. ② Matched pair of 1N541's.

ELECTROLYTIC CAPACITORS

ITEM No.	RATING	REPLACEMENT DATA			
		ARVIN PART No.	AEROVOX PART No.	CENTRALAB PART No.	CORNEILL-DUBILIER PART No.
C1A	500 35V	97711-15	AF12-05-85①	EA50-500 & EA50-500	BR500-50 & BR500-50
C2	500 10V	67012-9	BCD12500	EA50-500	Q71-31
C3	10 25V	67012-12	BCD25010	EP50-10	Q71-30
C4	2 25V	67012-15	EP50-2	EP50-10	MT1-5
C5	2 10V	49385-10	BCD12002	EP50-2	MT1-1
C6	2 10V	49385-10	BCD12002	EP50-2	MT1-1
C7	2 25V	67012-15	BCD25002	EP50-2	MT1-1
C8	30 25V	49385-12	BCD25002	EP50-2	MT1-1
C9	2 25V	67012-15	BCD25002	EP50-2	MT1-1
C10	50 15V	67012-17	CRD467A	EA15-50	MT1-16
C11	10 25V	67012-12	BCD25010	EP30-10	MT1-5
C12	100 35V	49385-14	PTT137	EA50-100	Q71-23
C13	10 35V	67012-26	BCD50010	EP50-10	MT1-6

① Use PC mounting kit.

CAPACITORS

ITEM No.	RATING	REMARKS	REPLACEMENT DATA			
			AEROVOX PART No.	CENTRALAB PART No.	CORNEILL-DUBILIER PART No.	ELMENCO PART No.
C20	.02 50V		TTD-02	CK-203	CZ601C4HR2D	CDD-203
C21	6.8 NPO		NPO-DI 6.8	DTZ-688		CCTO-688
C22	5.6 NPO					
C23	.02 50V		TTD-02	CK-203	HOR101ZV203P	CDD-203
C24	.02 50V		TTD-02	CK-203	HOR101ZV203P	CDD-203
C25	.02 50V		TTD-02	CK-203	HOR101ZV203P	CDD-203
C26	15 NPO		NPO-DI 15	DTZ-15	CZ601CG150J	CCTO-150
C27	2.5 NPO		NPO-DI 2.2	DTZ-2R2	CZ601C42R2D	CCTO-2R2
C28	1.5 50V		TTD-02	CK-203	HOR101ZV203P	CDD-203
C29	.02 50V		TTD-02	CK-203	HOR101ZV203P	CDD-203
C30	15 50V		TTD-02	CK-203	HOR101ZV203P	CDD-203
C31	.02 50V		TTD-02	CK-203	HOR101ZV203P	CDD-203
C32	120 50V	10%	DD-120	DD-121	JBZ601YP121K	CDD-121
C33						
C34	11 N750	(12)†	N750-DI 10	DTN-10	CZ601UJ100J	CCTN-100
C35	15 NPO		NPO-DI 15	DTZ-15	CZ601CG150J	CCTO-150
C36	.02 50V		TTD-02	CK-203	HOR101ZV203P	CDD-203
C37	.02 50V		TTD-02	CK-203	HOR101ZV203P	CDD-203
C38	10 NPO	(8, 2)†	NPO-DI 10	DTZ-10	CZ601CG100J	CCTO-100
C39	10 NPO		NPO-DI 10	DTZ-10	CZ601CG100J	CCTO-100
C40	130 300V	10%	ADM-13-131	CPR-1300J	CD13F1313500	DM-13-131J
C41	.0012 125V	10%	TTD-005	CK-502	HOR101ZV503Z	CDD-502
C42	.0012 125V	10%	TTD-005	CK-502	HOR101ZV503Z	CDD-502
C43	880 125V	10%	TTD-005	CK-502	HOR101ZV503Z	CDD-502
C44	.01 15V		TTD-01	CK-103	HOR101ZV103P	CDD-103
C45	.02 25V		TTD-02	CK-203	HOR101ZV203P	CDD-203
C46	.05 25V		TTD-05	CK-503	HOR101ZV503P	CDD-503
C47	.0012 125V	10%	TTD-02	CK-203	HOR101ZV203P	CDD-203
C48	.02 25V		TTD-02	CK-203	HOR101ZV203P	CDD-203
C49	.005 25V		TTD-005	CK-502	HOR101ZV502P	CDD-502
C50	.005 25V		TTD-005	CK-502	HOR101ZV502P	CDD-502
C51	16 NPO	10%	NPO-DI 15	DTZ-15	HOV101ZV503Z	CCTO-150
C52	.01 25V		TTD-01	CK-103	HOV101ZV103P	CDD-103
C53	.02 25V		TTD-02	CK-203	HOV101ZV203P	CDD-203
C54	.005 25V		TTD-005	CK-502	HOV101ZV502P	CDD-502
C55	.005 25V		TTD-005	CK-502	HOV101ZV502P	CDD-502

CAPACITORS

ITEM No.	RATING	REMARKS	REPLACEMENT DATA			
			AEROVOX PART No.	CENTRALAB PART No.	CORNEILL-DUBILIER PART No.	ELMENCO PART No.
C56	300 N750 10%			TCN-300	TCN-300	CCTN-301
C57	300 N750 10%			TCN-300	TCN-300	CCTN-301
C58	300 N750 10%			TCN-300	TCN-300	CCTN-301
C59	.015 25V	BPD-.015		DD-153	BYT601ZU153Z	CCD-153
C60	.03 25V	TTD-.03		CK-503		CCD-303
C61	.05 25V	TTD-.05		CK-503		CCD-303
C62	.002 25V	TTD-.002		DI-2000	HOV101ZV503Z	CCD-202
C63	33 NPO 10%			DI-2000	HOV101ZV503Z	CCD-202
C64	22 NPO 10%			DI-2000	HOV101ZV503Z	CCD-202
C65	.01 25V			DI-10000	HOV101ZV503Z	CCD-103
C66	.02 50V			CK-103	HOV101ZV203P	CCD-103
C67	.01 25V			CK-103	HOV101ZV203P	CCD-103
C68	100 1500V			DD30-101	HOV101ZV103P	CCD-101
C69		#7249-18				

Arvin Part Number.

† Alternate Value.

CONTROLS

All wattages 1/2 watt, or less, unless otherwise listed.

ITEM No.	USE	RESISTANCE	REPLACEMENT DATA			
			ARVIN PART No.	CENTRALAB PART No.	CLAROSTAT PART No.	MALLORY PART No.
R1	Volume/Switch	20K	95100-60	F2-25K ①, SN100, KR-1	NP-25K-Z ①, NML-A-300,	RU94A ①, SN1000, US41 or (UA94A ①)
	Volume	20K	95100-37 ②	F2-25K ①, SN100	NP-25K-Z ①, NML-A-300	BI3-120, TM4 ①
R2	Tone	60K	95100-35	F2-50K ①, SN100	A47-50K-Z ①, RN-3 or (NP-50K-Z ①, NML-A-300)	RU94A ①, SN1000, US41 or (UA94A ①)

① Use original mounting bracket.

② Used in Chassis 1.33401, 1.33601.

COILS (RF-IF)

ITEM No.	USE	REPLACEMENT DATA			
		PART No.	MEISSNER PART No.	MILLER PART No.	WORKMAN PART No.
L1	FM Antenna	①			
L2	FM RF	①			
L3	10.7MC Trap	①			
L4	FM IF Input	①			
L5	FM Oscillator	①			
L6	FM Interstage IF	①			
L7	FM Interstage IF	①			
L8	Ratio Detector	49386-21			
L9	Loopstick	49386-31			
L10	AM Oscillator	46861-22			
L11	AM Input IF	45788-37			
L12	AM Output IF	49388-18			
L13	AM Output IF	49388-24			
L14	Line Choke (2.6uH)	49388-36			
L15	Line Choke (2.6uH)	49315-1			

① Part of FM Tuner (MT) Part Number 68950-1

TRANSFORMER (POWER)

ITEM No.	RATING	REPLACEMENT DATA				NOTES
		PHI.	SEC. 1	SEC. 2	ARVIN PART No.	STANCOR PART No.
T1	117VAC 22.4VAC AC	@.071A DC	Tapped @5.4 VAC @ 15A AC		46070-30	

SPEAKER

ITEM No.	TYPE	REPLACEMENT DATA			NOTES
		ARVIN PART No.	JENSEN PART No.	QUAM PART No.	
SP1	5" PM	18Ω	45599-21	5A1Z18	

MISCELLANEOUS

ITEM No.	PART NAME	PART No.	NOTES
M1	Tuner	69950-1	FM (Complete)
M2	Integrated Circuit Switch	95299-1	Audio Output & Associated Components
S1	Printed Circuit Board	95644-15	Function Complete (Chassis 1.33301, 1.33501)
	Printed Circuit Board	93088-1	Complete (Chassis 1.33401, 1.33601)
	Printed Circuit Board	99070-1	Less Components (All Chassis)
	Printed Circuit Board	69960-1	Switch
		94545	

CABINETS & CABINET PARTS

(When Ordering Specify Model, Chassis & Color)

ITEM	MODEL	PART No.	ITEM	MODEL	PART No.
Cabinet, Front	38R48, 38R68	2000116-67	Cabinet, Walnut Wood	48R68	2001178-1
Cabinet, Back	38R48	69851-388	Cabinet, Walnut Grain	48R48	69851-286
Cabinet	38R68	2001178-2	Knob, Clock	48R68	69851-286
Knob, Tuning, Tone, Volume	38R68	2000119-1	Knob, Doze	48R68	69851-286
Knob, Function	38R68	2000119-2	Knob, Repeat	48R48	69851-286
Cabinet, Front, Off White	48R68, 48R48	69848-67			



The listing of any available replacement part, any case a recommendation, warranty or guarantee, as to the quality and suitability of such parts of these parts have been compiled from information Sams & Co., Inc., by the manufacturers of the part listed. SN585

HOWARD W. S.

DIAL CO STRINGI

Before suspect of trouble in t audio signet a related compe If this checks special attent Suspicious-loc defects within

TRADE NAME: Arvin

MODELS 38R48 38R68 48R48 48R68

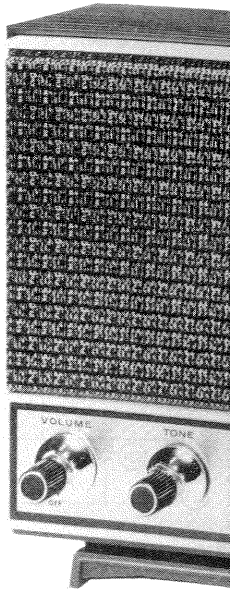
SUPPLIER: For Current Address

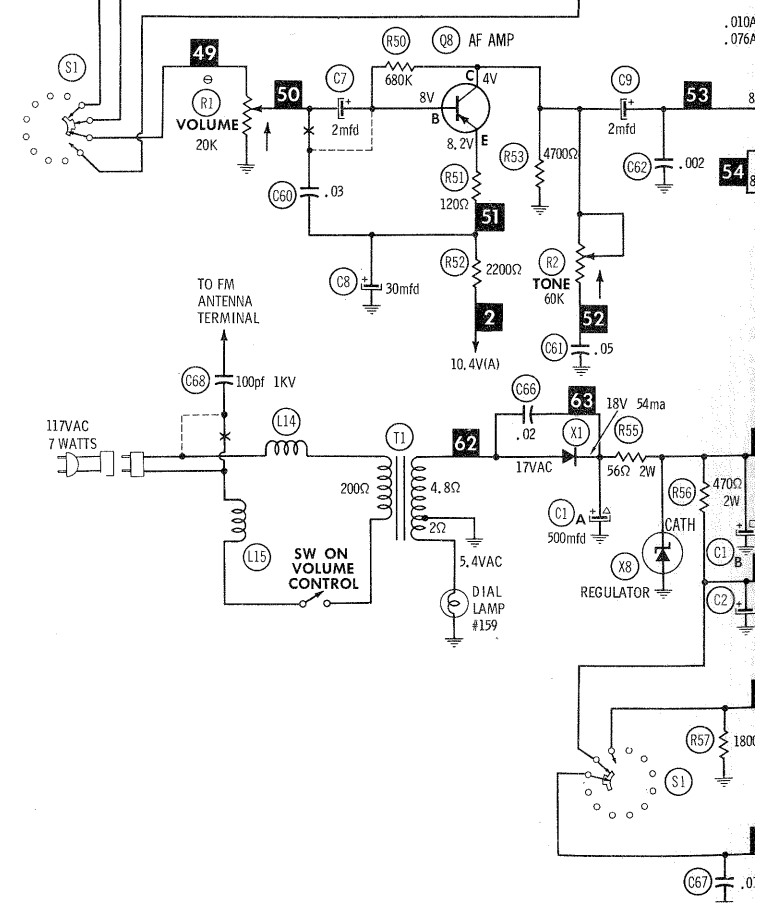
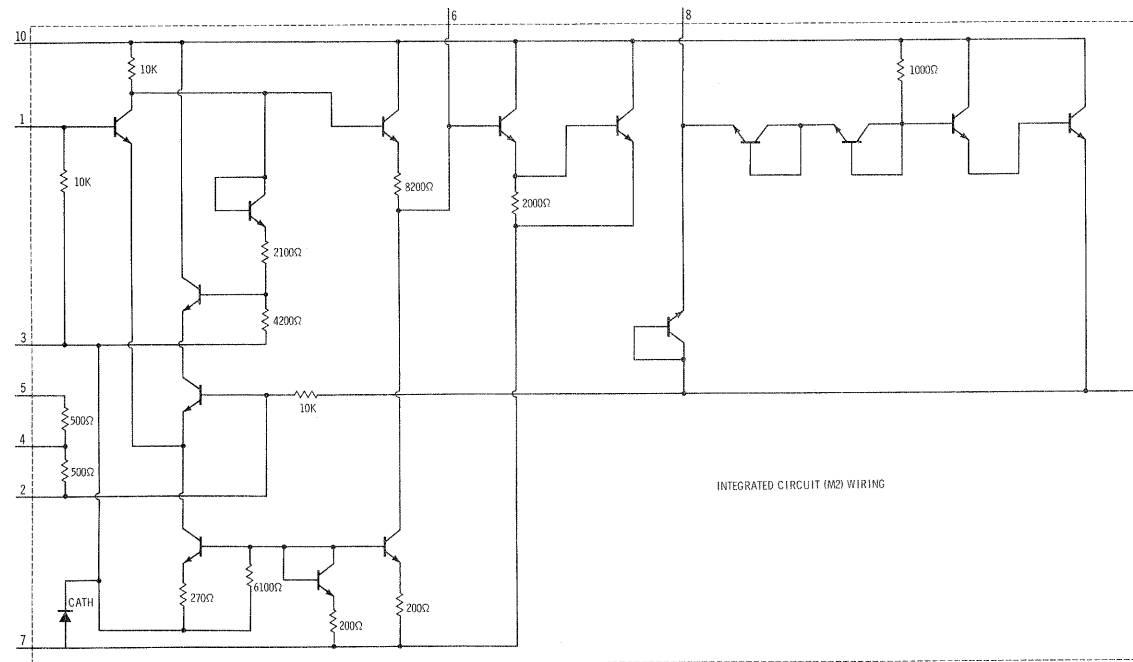
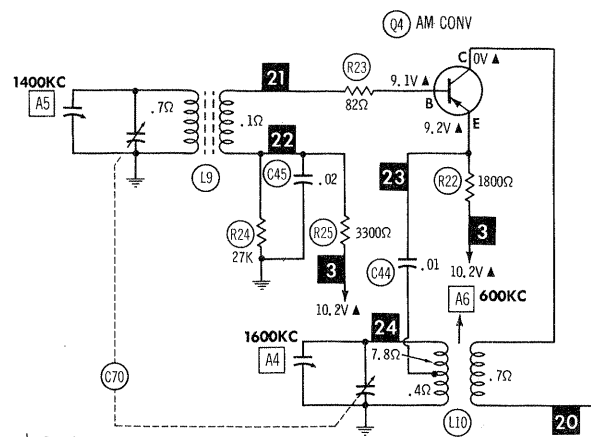
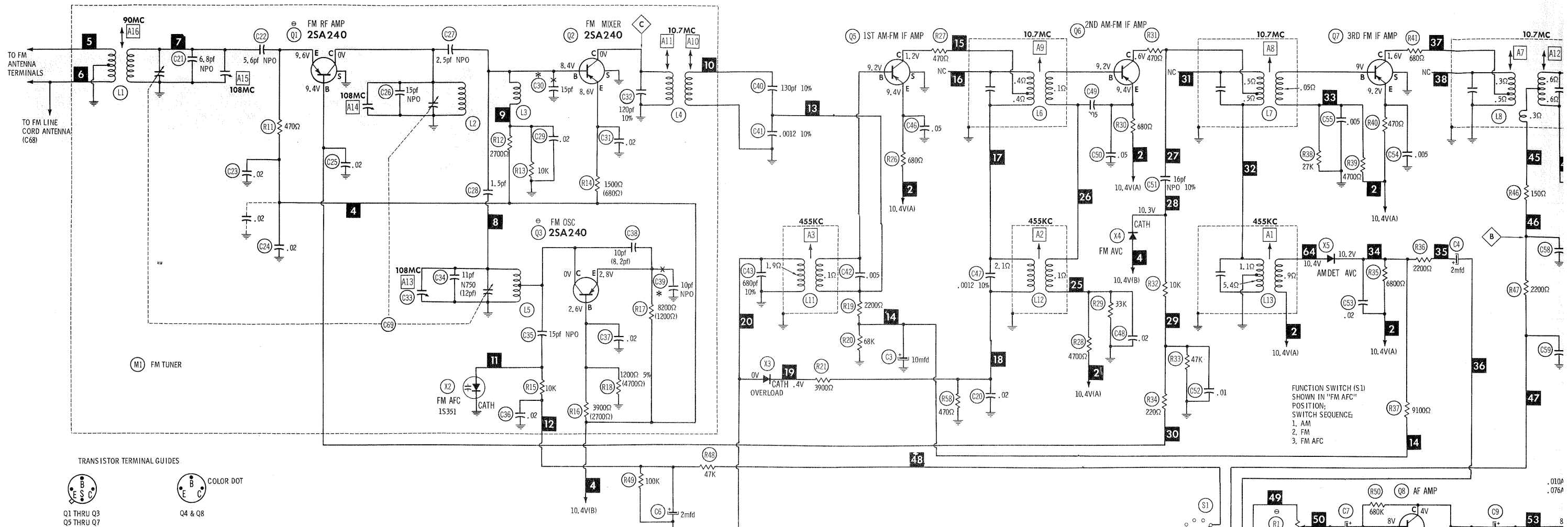
TYPE SET: 8-Transistor AM-F

POWER SUPPLY: 110-120 Volts AC,

ARVIN CHASSIS 1.33301, 1.33401, 1.33501, 1.33601

SET 949 FOLDER 4





- ⊕ Denotes ground.
 * Not used in some versions.
 Ⓢ See parts list.
1. Switches viewed from end opposite actuator unless otherwise indicated.
 2. Resistors are 1/2 watt or less and rated 10% or 20% unless otherwise indicated.
 3. Voltage and resistance readings taken with a VTVM.
 4. Supply voltage maintained at rated value for voltage measurements.
 5. All controls set for normal operation, no signal applied.
 6. Measured values are from socket pin or terminal to common ground.
 7. All terminals viewed from bottom unless otherwise indicated.
 8. Numbers assigned to terminals may not be found on the unit.
 9. Resistance measurements not given because of the wide variation in internal resistance of the transistor.

A PHOTOFACT STANDARD NOTATION SCHEMATIC
 with **CIRCUITRACE**
 © Howard W. Sams & Co., Inc. 1968

ALIGNMENT INSTRUCTIONS

Maintain line voltage at 117 volts. Use only enough generator output to obtain a suitable indication. Allow a 15 minute warmup for receiver and equipment.
CAUTION: Use isolation transformer, if available. If not, observe polarity when connecting test equipment.
Suggested Alignment Tools:
A1 thru A5, A13 thru A15. GENERAL CEMENT: 8868, 8987, 9089 WALSCO: 2531-X, 2541, 2587
A6, A8, A9. GENERAL CEMENT: 9440 WALSCO: 2501
A7, A10, A11, A12, A16. GENERAL CEMENT: 9296, 9297, 9300 WALSCO: 2510, 2546, 2547

AM ALIGNMENT - SELECTOR IN AM POSITION

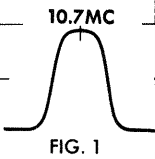
Fashion loop of several turns of wire and connect generator across loop. Set volume control at maximum.

GENERATOR FREQUENCY	DIAL SETTING	INDICATOR	ADJUST	REMARKS
1. 455KC (400% Mod.)	Tuning gang fully open.	Output Meter across Voice coil.	A1, A2, A3	Adjust for maximum. Repeat until no further improvement can be made.
2. 1600KC	"	"	A4	Adjust for maximum.
3. 1400KC	Tune to signal.	"	A5	"
4. 600KC	"	"	A6	Rock tuning gang and adjust for maximum. Repeat steps 2 thru 4 until no further improvement can be made.

FM ALIGNMENT USING AM SIGNAL GENERATOR - SELECTOR IN FM POSITION

High side to point \diamond thru a .001 capacitor, low side to ground.

GENERATOR FREQUENCY	DIAL SETTING	INDICATOR	ADJUST	REMARKS
5. 10.7MC (Unmod.)	Point of non-interference.	DC probe of VTVM to point \diamond ; common to ground.	A7, A8, A9, A10, A11	Adjust for maximum.
6. "	"	DC probe to point \diamond ; common to ground.	A12	Adjust for zero reading. A positive or negative reading will be obtained on either side of the correct setting.



FM IF ALIGNMENT USING FM SIGNAL GENERATOR - SELECTOR IN FM POSITION

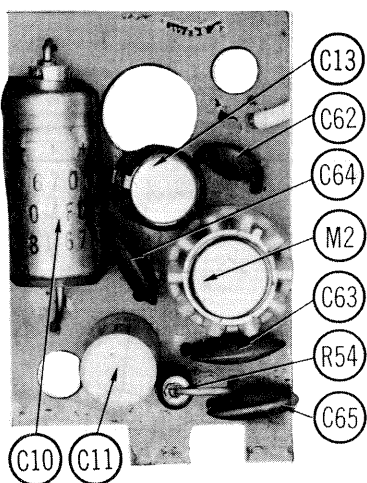
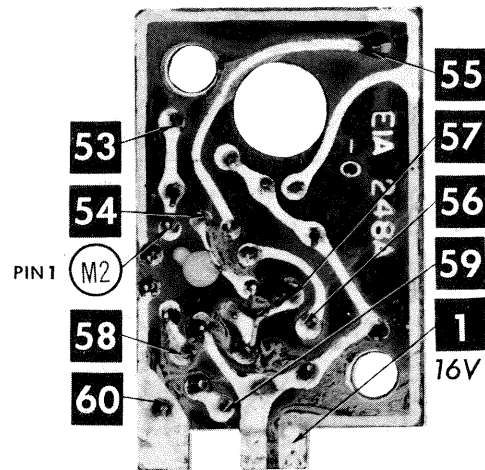
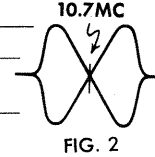
High side to point \diamond thru a .001 capacitor, low side to ground. Use only enough marker signal to obtain indication. Use 60% frequency modulated signal with 450KC sweep. Use 120% sawtooth voltage in scope for horizontal deflection.

GENERATOR FREQUENCY	DIAL SETTING	INDICATOR	ADJUST	REMARKS
5. 10.7MC (450KC Swp.)	Point of non-interference	Vert. amp. of Scope to point \diamond ; low side to ground.	A7, A8, A9, A10, A11	Disconnect stabilizing capacitor C5. Adjust for maximum gain and symmetry of response similar to Fig. 1 with marker as shown. Reconnect C5.
6. "	"	Vert. amp. to point \diamond ; low side to ground.	A12	Adjust A12 (Secondary) to place marker at center of crossover lines similar to Fig. 2. Adjust A7 (Primary) for maximum amplitude and straightness of crossover lines.

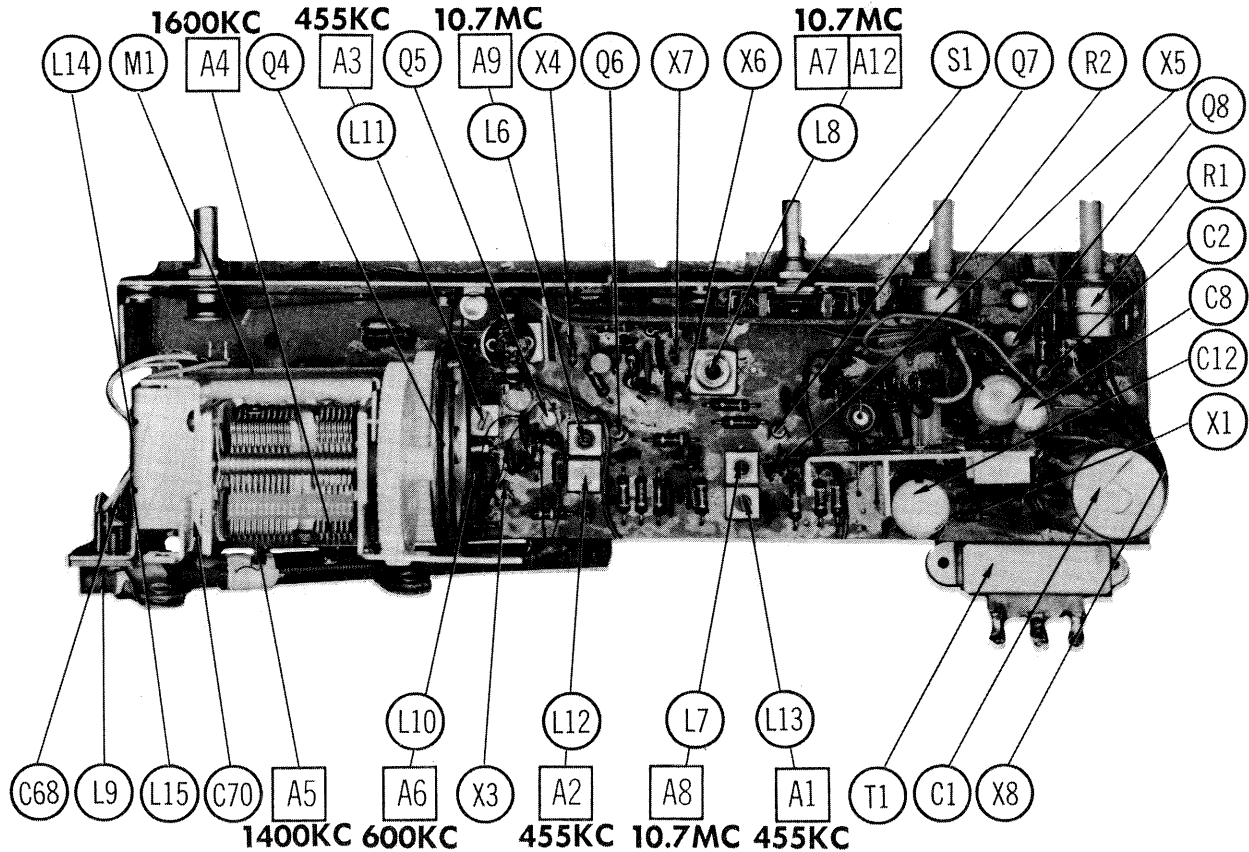
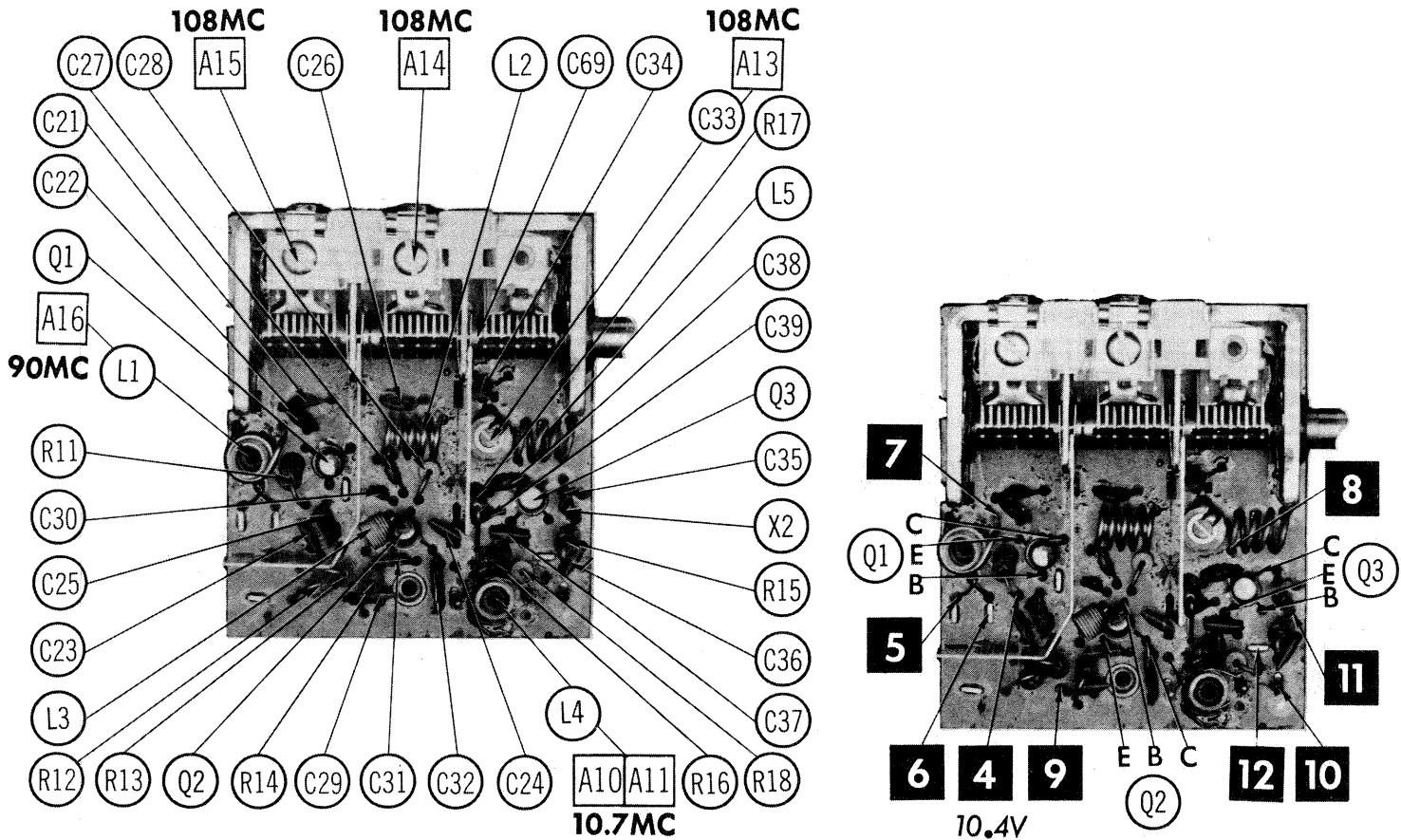
FM RF ALIGNMENT

Connect generator across antenna terminals with 120Q carbon resistors in series with each lead.

GENERATOR FREQUENCY	DIAL SETTING	INDICATOR	ADJUST	REMARKS
7. 108MC	Set at high end.	DC probe of VTVM to point \diamond ; common to ground.	A13, A14, A15	Adjust for maximum.
8. 90MC	Tune to signal.	"	A16	Rock tuning and adjust for maximum. Repeat steps 7 and 8 until no further improvement can be made.



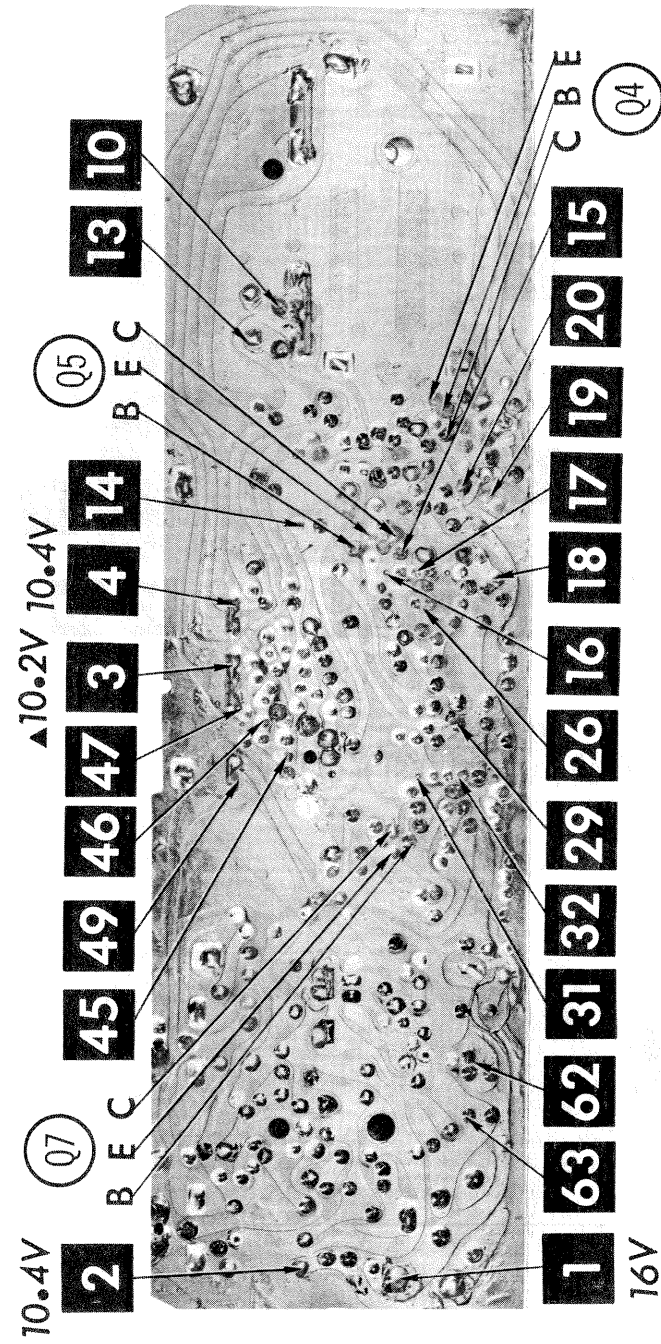
A Howard W. Sams CIRCUITRACE® Photo



A Howard W. Sams CIRCUITRACE® Photo

ARVIN CHASSIS
1.33301, 1.33401, 1.33501, 1.33601

FOLDER 4



Howard W. Sams
CIRCUITRY Photos

