



PHOTOFACT[®] with

CIRCUITRACE[®]

TRADE NAME : Arvin Model 68R89 (Ch. 1.30001)
 SUPPLIER : For Current Address, See Annual Index
 TYPE SET : 8-Transistor AM Receiver
 POWER SUPPLY : 110 - 120 Volts AC, 60 Cycles (or)
 6 Volts. DC
 RATING : 12ma @ 6VDC (No Signal, Min. Volume)
 25ma @ 6VDC (Signal, Normal Volume)



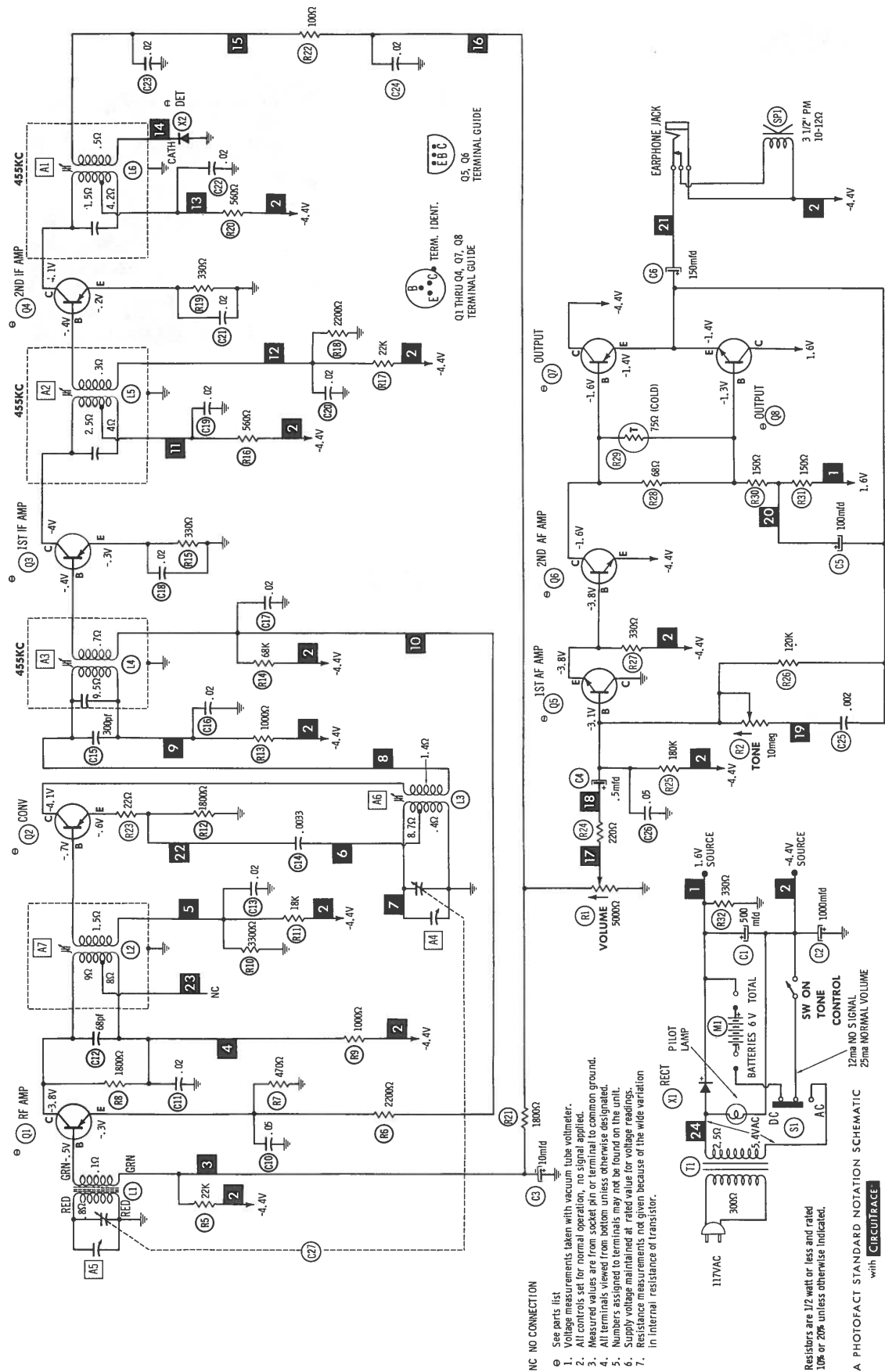
ALIGNMENT INSTRUCTIONS

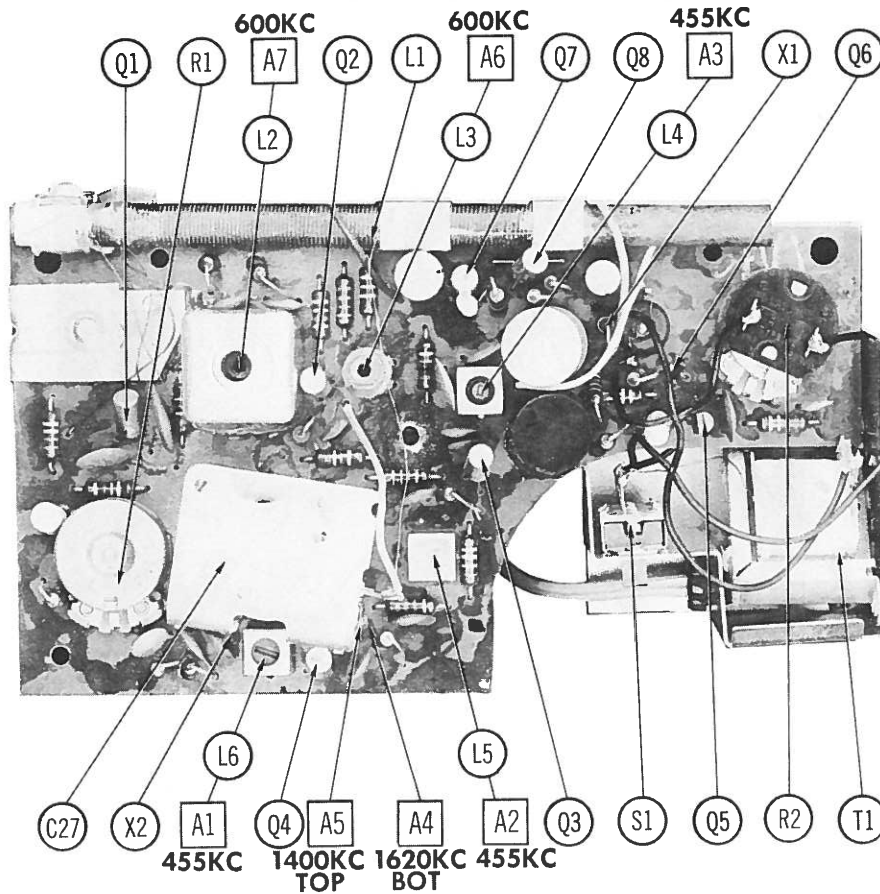
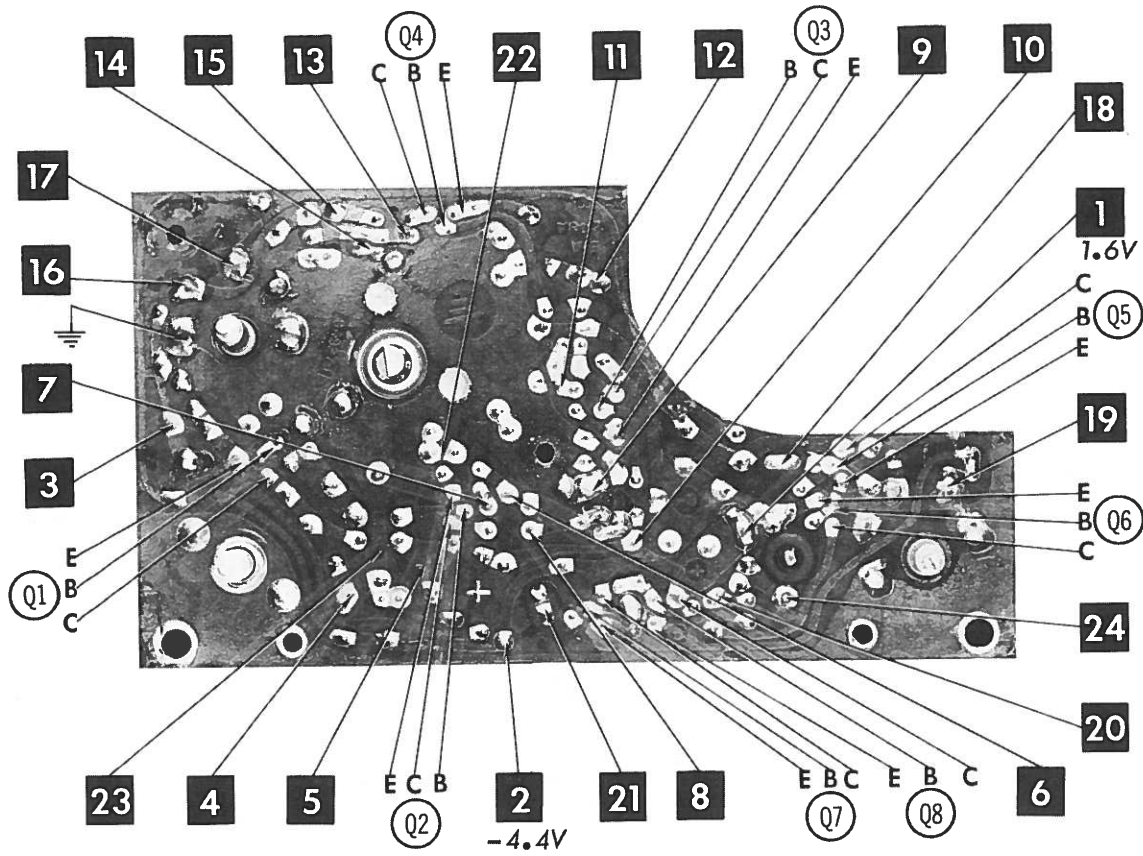
Check for specified source voltage. Set Volume control at maximum.
 Fashion loop of several turns of wire and connect generator across loop.
 Adjust output of generator to radiate only enough signal into receiver to obtain a suitable indication.
 Suggested Alignment Tools:

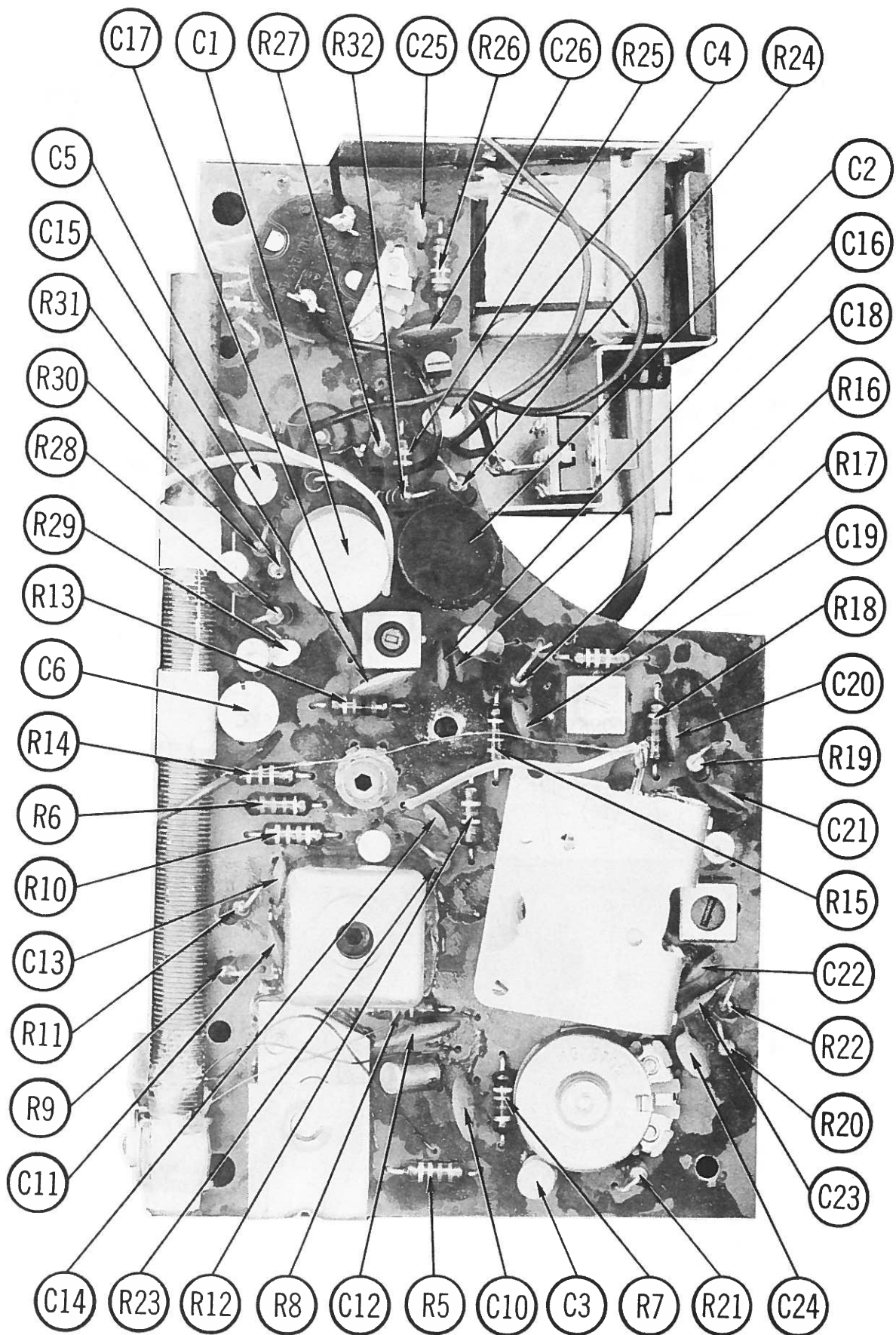
A1, A2..... GENERAL CEMENT #9087..... WALSCO #2528
 A3..... GENERAL CEMENT #8282..... WALSCO #2526
 A4, A5..... GENERAL CEMENT #8276, 8277, 8290..... WALSCO #2512, 2515, 2525
 A6..... GENERAL CEMENT #9296, 9297, 9300..... WALSCO #2510, 2546, 2547

	GENERATOR FREQUENCY	DIAL SETTING	INDICATOR	ADJUST	REMARKS
1.	455KC (400v Mod.)	Tuning gang fully open.	Output Meter across Voice coil.	A1, A2, A3	Adjust for maximum. Repeat until no further improvement can be made.
2.	1620KC	"	"	A4	Adjust for maximum.
3.	1400KC	Tune to signal.	"	A5	Adjust for maximum.
4.	600KC	"	"	A6, A7	Rock tuning gang and adjust for maxi- mum. Repeat steps 2 thru 4 until no further improvement can be made.

ARVIN MODEL 68R89 (Ch. 1.30001)







PARTS LIST AND DESCRIPTION

(When ordering parts, state Model, Part Number, and Description.)

WIRING DATA

General-use Unshielded Hook-up Wire	Use BELDEN No. 8530 (Solid 22AWG) 8524 (Stranded 22AWG) 8570 (Stranded 28AWG)	Available in 12 Colors
---	---	------------------------------

TRANSISTORS

ITEM No.	ORIG. TYPE	USE	REPLACEMENT DATA				ARVIN PART No.	NOTES
			DELCO PART No.	GENERAL ELECTRIC PART No.	INTERNATIONAL RECTIFIER PART No.	RCA PART No.		
Q1		RF Amp.	DS-25	GE-9	TR-11	SK-3008	95101	PNP
Q2		Conv.	DS-25	GE-9	TR-11	SK-3008	95101	PNP
Q3		1st IF Amp.	DS-25	GE-9	TR-11	SK-3006	99103	PNP
Q4		2nd IF Amp.	DS-25	GE-9	TR-11	SK-3006	99102	PNP
Q5		1st AF Amp.	DS-65	GE-10	TR-21	SK-3020	95221	PNP
Q6		2nd AF Amp.	DS-66	GE-10	TR-21	SK-3020	95221	PNP
Q7		Output					95224-1 ①	PNP
Q8		Output					95224-2 ①	PNP

① Matched Pair

POWER RECTIFIERS & SIGNAL DIODES

ITEM No.	MEASURED CURRENT	ORIGINAL Part or Type No.	RECTIFIERS & DIODES		RECTIFIERS		
			GENERAL ELECTRIC PART No.	INTERNATIONAL RECTIFIER PART No.	MALLORY PART No.	RCA PART No.	SARKES TARZIAN PART No.
X1	.06ADC	47126-7	GE-504A	8D4 or 5A4-D	A50 or D50	SK-3016 or SK-3017	40C or F-4
X2		48287	1N34AS	1N34A			

ELECTROLYTIC CAPACITORS

ITEM No.	RATING	REPLACEMENT DATA						
		ARVIN PART No.	AEROVOX PART No.	CENTRALAB PART No.	CORNELL-DUBILIER PART No.	GENERAL ELECTRIC PART No.	MALLORY PART No.	SPRAGUE PART No.
C1	500 10V	67012-16	BCD12500				MTV400J10	
C2	1000 10V	67012-23						
C3	10 10V	49385-6	CRE407A	EP15-10	NLW10-15	MT1-5	TT10X10	TE-1128
C4	.5 10V	49385-16	CRE400A	UK10-474	NLW1-50	MT1-1	TT12X1	TE-1080
C5	100 3V	49385-11	BCD3100	EP6-100	NLW100-3	MT1-21	TT3X100	TE-1059, 5
C6	150 10V	49385-15	BCD12150		NLW150-10		TT12X150	TE-1136

CAPACITORS

ITEM No.	RATING	REMARKS	REPLACEMENT DATA						
			AEROVOX PART No.	CENTRALAB PART No.	CORNELL-DUBILIER PART No.	ELMENCO PART No.	MALLORY PART No.	SPRAGUE PART No.	
C10	.05	#2001077-6	TTD-05	CK-503	HOV101ZV503Z		TA150	TG-S50	
C11	.02		TTD-02	CK-203	HOR101ZV203P	CCD-203	TA120	TG-S20	
C12	68 NPO		NPO-DI 68	DTZ-68	CX601CG680K	CCTO-680	CNO468	10TCC-Q68	
C13	.02		TTD-02	CK-203	HOR101ZV203P	CCD-203	TA120	TG-S20	
C14	.0033		DI-3300	DD-332	JBV601Y P332K	CCD-332	GP233	10TS-D33	
C15	300		DI-300	DM-301		CCD-301	GP330	10TS-T30	
C16	.02		TTD-02	CK-203	HOR101ZV203P	CCD-203	TA120	TG-S20	
C17	.02		TTD-02	CK-203	HOR101ZV203P	CCD-203	TA120	TG-S20	
C18	.02		TTD-02	CK-203	HOR101ZV203P	CCD-203	TA120	TG-S20	
C19	.02		TTD-02	CK-203	HOR101ZV203P	CCD-203	TA120	TG-S20	
C20	.02		TTD-02	CK-203	HOR101ZV203P	CCD-203	TA120	TG-S20	
C21	.02		TTD-02	CK-203	HOR101ZV203P	CCD-203	TA120	TG-S20	
C22	.02		TTD-02	CK-203	HOR101ZV203P	CCD-203	TA120	TG-S20	
C23	.02		TTD-02	CK-203	HOR101ZV203P	CCD-203	TA120	TG-S20	
C24	.02		TTD-02	CK-203	HOR101ZV203P	CCD-203	TA120	TG-S20	
C25	.002		DI-2000	DM-202	JBX601Y P202K	CCD-202	GP220	5GA B-D22	
C26	.05			TTD-05	CK-503	HOV101ZV503Z		TA150	TG-S50
C27									

Arvin Part Number

CONTROLS

All wattages 1/2 watt, or less, unless otherwise listed.

ITEM No.	USE	RESISTANCE	REPLACEMENT DATA				
			ARVIN PART No.	CENTRALAB PART No.	CLAROSTAT PART No.	CTS-IRC PART No.	MALLORY PART No.
R1	Volume	5000Ω	97300-9	MLC53A			
R2	Tone & Switch	1meg	97300-11	MLC16AS			

RESISTORS (Power and Special)

ITEM No.	RATING	REPLACEMENT DATA			ITEM No.	RATING	REPLACEMENT DATA		
		IRC PART No.	WORKMAN PART No.	ARVIN PART No.			IRC PART No.	WORKMAN PART No.	ARVIN PART No.
R29	75Ω (Cold)		GM82	67011-2					

ARVIN MODEL 68R89 (Ch. 1.30001)

PARTS LIST AND DESCRIPTION (CONTINUED)

(When ordering parts, state Model, Part Number, and Description.)

COILS (RF-IF)

ITEM No.	USE	REPLACEMENT DATA				
		ARVIN PART No.	MEISSNER Part No.	MERIT PART No.	MILLER PART No.	WORKMAN PART No.
L1	Loopstick	46861-9			7788	
L2	RF	47655-3				
L3	Osc.	45783-39				
L4	1st IF	49388-12	16-9026 ①	BC-574 ①		
L5	2nd IF	49388-21	16-9027 ①	BC-575 ①	8517 ①	
L6	3rd IF	49388-31	16-9028 ①	BC-576 ①	8518 ①	

①Cut off Pin #3.

TRANSFORMER (POWER)

ITEM No.	RATING			REPLACEMENT DATA					NOTES
				ARVIN PART No.	MERIT PART No.	STANCOR PART No.	THORDARSON PART No.	TRIAD PART No.	
T1	117VAC @ .02A AC	5.4VAC @ .06A DC		46070-29					

SPEAKER

ITEM No.	TYPE	REPLACEMENT DATA			NOTES
		ARVIN PART No.	JENSEN PART No.	QUAM PART No.	
SP1	3 1/2" PM 10-12Ω	46523-17			

BATTERIES

ITEM No.	VOLTAGE	ARVIN PART No.	REPLACEMENT DATA			NOTES
			BURGESS	EVEREADY	MALLORY	
M1	6V		130 or AL1	1035 or E93	M14R or MN1400	4 Required

MISCELLANEOUS

ITEM No.	PART NAME	ARVIN PART No.	NOTES
S1	Switch, AC-DC Printed Circuit Board Printed Circuit Board	25525-2 94927-1 94962-1	Less Components With Components

CABINETS & CABINET PARTS

(When Ordering Specify Model, Chassis & Color)

ITEM	PART No.	ITEM	PART No.
Cabinet - Front	2002866	Knob - Tuning & Volume	69324-1
Cabinet - Back	2002865	Knob - Tone	69325-1

DIAL CORD—FRONT VIEW

