

X6	(1N293)	(1N543 ②)	(1N80	(1N543 ②)
X7	(1N293)	(1N543 ②)	(1N80	(1N543 ②)

## ELECTROLYTIC CAPACITORS

ITEM No.	RATING		REPLACEMENT DATA			
	CAP.	VOLT.	AEROVOX PART No.	CORNELL-DUBIER PART No.	GENERAL ELECTRIC PART No.	MALLORY PART No.
C1A	150	150	AFH2-22-50	BB0189	XC2-43	FP216, 3A
C1B	200	40		NLW200-12	MT1-23	TT10X200
C2	200	10		NLW2-50	MT1-1	TT10X2
C3	2	10		NLW2-50	MT1-1	TT10X2
C4	2	10		NLW2-50	MT1-1	TT10X2
C5	2	10		NLW2-50	MT1-1	TT10X2
C6	2	10		NLW2-50	MT1-1	TT10X2
C7	30	10		NLW30-15	MT1-14	TT10X30
C8	30	10		NLW30-15	MT1-14	TT10X30

## CAPACITORS

ITEM No.	RATING	REMARKS	REPLACEMENT DATA			
			AEROVOX PART No.	CENTRALAB PART No.	CORNELL-DUBIER PART No.	ELMENDO PART No.
C9	10% NPO	(20)	NPO-DI 10	DTZ-10	CZ601CG1001	CCTO-100
C10	25 NPO		NPO-DI 25	DTZ-25		CNO425
C11	50V		NPO-DI 25	DTZ-25		CNO425
C12	.01 50V		TTD-01	CK-103	HOY101ZV103P	CCD-103
C13	.01 50V		TTD-01	CK-103	HOY101ZV103P	CCD-103
C14	.01 50V		TTD-01	CK-103	HOY101ZV103P	CCD-103
C15	15 N330					
C16	3					
C17	1.5 NPO		NPO-DI 1.5	DTZ-1R5		CNO515
C18	20 50V		NPO-DI 20	DD-20		CNO420
C19	500 50V			DD-501		GP350
C20	.01 50V		TTD-01	CK-103	HOY101ZV103P	CCD-103
C21	.01 50V		TTD-01	CK-103	HOY101ZV103P	CCD-103
C22	5.6 N750					TA110
C23	60 NPO					10TCCU-V36
C24	11 N750		TTD-01	TCN-12	CZ601LI1201	CN7412
C25	.01 30V			CK-103	HOY101ZV103P	TA110
C26	.02 25V	497233-7	TTD-01			MS-22
C27	.02 25V		ADM-20-203	CPR-2000A	CD10F2021500	TG-820
C28	.02 25V		TTD-02	CK-203	HOR101ZV203P	TA120
C29	.02 25V		TTD-02	CK-203	HOR101ZV203P	TA120
C30	.02 25V		TTD-02	CK-203	HOR101ZV203P	TA120
C31	.05 25V		DD-05	DD-05		5HK-550
C32	.05 25V		DD-05	DD-05		5HK-550
C33	.05 25V		DD-05	DD-05		5HK-550
C34	.05 25V		DD-05	DD-05		5HK-550
C35	.05 25V		DD-05	DD-05		5HK-550
C36	.05 25V		DD-05	DD-05		5HK-550
C37	.02 25V		TTD-02	CK-203	HOR101ZV203P	TG-820
C38	.05 25V		DD-05	DD-05		5HK-550
C39	.05 25V		DD-05	DD-05		5HK-550
C40	.05 25V		DD-05	DD-05		5HK-550
C41	.05 25V		DD-05	DD-05		5HK-550
C42	.05 25V		DD-05	DD-05		5HK-550
C43	.01 25V		TTD-01	CK-103	HOY101ZV103P	CCD-103
C44	.01 25V		TTD-01	CK-103	HOY101ZV103P	CCD-103
C45	.01 25V		TTD-01	CK-103	HOY101ZV103P	CCD-103
C46	.01 25V		TTD-01	CK-103	HOY101ZV103P	CCD-103
C47	.01 25V		TTD-01	CK-103	HOY101ZV103P	CCD-103
C48	.05 25V		DD-05	DD-05		5HK-550
C49	.05 25V		DD-05	DD-05		5HK-550
C50	.01		DI-10000	DD-103	BYX601ZU103M	GP110
C51	.02		DD-02	DD-103	BYX601ZU103M	GP110
C52	.01		DI-10000	DD-103	BYX601ZU103M	GP110
C53	.01		DI-10000	DD-103	BYX601ZU103M	GP110
C54						

\* Not normally in distributor's stock. Available thru distributor on order to manufacturer.

† Alternate Value.

‡ Arvin Part Number.

L5	1st FM IF	40061-25	10-9031	10-9031	2071
L6	Leopold	45783-24	10-9026*	10-9026*	2072
L7	2nd FM IF	49386-20	10-9032	10-9032	8517
L8	1st AM IF	49386-16	10-9027	10-9027	8517
L9	2nd AM IF	49386-27	10-9028	10-9028	8518
L10	3rd AM IF	95535-1	19-2011	19-2011	4006
L11	Radio Detector	49386-35	19-2011	19-2011	4006
L12	Line Choke (2.1uH)	49386-35	19-2011	19-2011	4006
L13	Line Choke (2.1uH)	49386-35	19-2011	19-2011	4006
L14	Line Choke (2.1uH)	49386-35	19-2011	19-2011	4006
L15	Line Choke (2.1uH)	49386-35	19-2011	19-2011	4006

\* Clip Pin #3.

## TRANSFORMER (AUDIO OUTPUT)

ITEM No.	IMPEDANCE		REPLACEMENT DATA			
	PRI.	SEC.	ARVIN PART No.	STANCOR PART No.	THORADSON PART No.	NOTES
T1	3400Ω	6-0Ω	94000-7	A-4103 ①	22801	① Drill new mounting holes.

## SPEAKER

ITEM No.	TYPE	REPLACEMENT DATA				NOTES
		ARVIN PART No.	JENSEN PART No.	QUAA PART No.	4A1Z8	
SP1	4" 5"	PM	6-0Ω	95900-6	45589-10 ①	① Used in Models 37R38, 47R38, 47R39.

## COMPONENT COMBINATIONS

ITEM No.	USE	DESCRIPTION	ARVIN PART No.	REPLACEMENT DATA
PC1	Antenna Isolation	.3-1mV, 470p (includes Start Cap)	4796-6 (DA625)	Centrad RC-471
PC2	Antenna Isolation	.3-1mV, 470p (includes Start Cap)	4796-6 (DA625)	Centrad RC-471

## MISCELLANEOUS

ITEM No.	PART NAME	ARVIN PART No.	NOTES
M1	Tower	200120-1	FM
M2	Timer	67936-66	Clock Timer (Models 47R28, 47R29).
S1	Switch	95644-19	Clock Timer (Model 47R38).
	Printed Circuit Board	94750-1	Complete.
	Printed Circuit Board	94757	Less Parts.



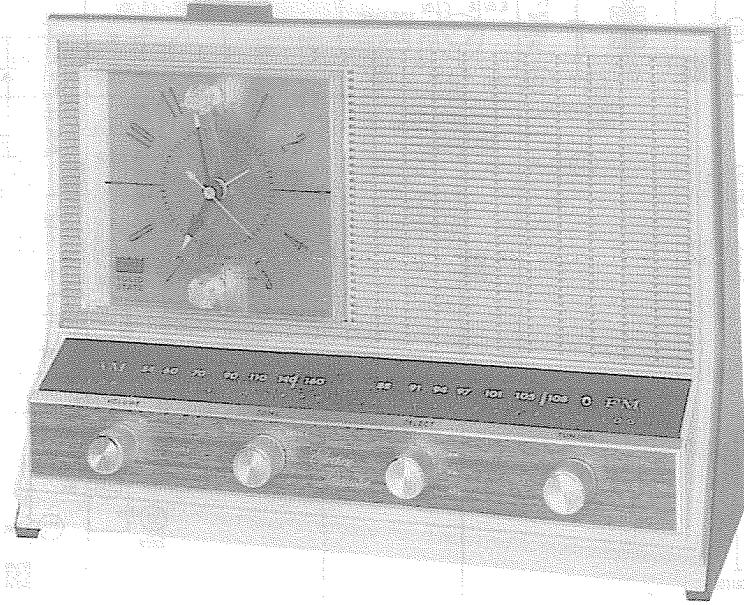
The listing of any available replacement part herein does not constitute in any case a recommendation, warranty or guaranty by Howard W. Sams & Co., Inc., as to the quality and suitability of such replacement part. The numbers of these parts have been compiled from information furnished to Howard W. Sams & Co., Inc., by the manufacturers of the particular type of replacement part listed. SK127

SET 879 FOLDER 6  
ARVIN CHASSIS  
1.23301, 1.23401, 1.23501, 1.23601

PHOTOFACT® Folder

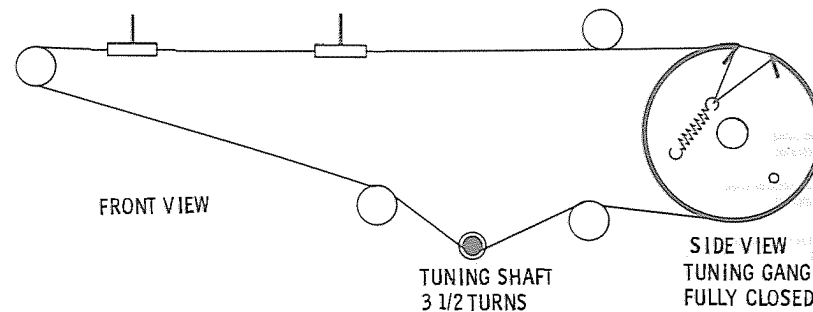
with CIRCUITRACE

ARVIN CHASSIS  
1.23301, 1.23401, 1.23501, 1.23601



TRADE NAME: Arvin Models 37R28, 37R29 (Ch. 1.23301), 37R38 (Ch. 1.23501), 47R28, 47R29 (Ch. 1.23401), 47R38 (Ch. 1.23601)  
SUPPLIER: For Current Address, See Annual Index.  
TYPE SET: 8 Transistor AM-FM Receiver  
POWER SUPPLY: 110-120 Volts AC, 60 Cycles RATING: 12 Watts, .105 Amp @ 117 Volts AC (Less Clock)

## DIAL CORD STRINGING



HOWARD W. SAMs & CO., INC. Indianapolis, Indiana 46206

Reproduction or use, without express permission, of editorial or pictorial content, in any manner, is prohibited. No patent liability is assumed with respect to the use of the information contained herein. © 1967 Howard W. Sams & Co., Inc., Indianapolis, Indiana 46206. Printed in U. S. of America

DATE 4 -67 SET 879 FOLDER 6

SET 879 FOLDER 6

PARTS LIST AND DESCRIPTION  
*(When ordering parts, state Model, Part Number, and Description.)*

WIRING DATA	
General-use Unshielded Hook-up Wire .....	Use BELDEN No. 6530 (Solid) Available in 12 Colors
Power Cord .....	Use BELDEN No. 6524 (Stranded) Available in 12 Colors
Power Cord (Interlock Type) .....	Use BELDEN No. 1706 (Plastic) or 1728 (Rubber) - 6 Ft.
Low-Loss Shielded Lead (Interconnecting) .....	Use BELDEN No. 1709 (Plastic) or 1729 (Rubber) - 9 Ft.
Phono Pick-up Arm Cable .....	Use BELDEN No. 6874 (Rubber) or 6895 (Plastic)
	Use BELDEN No. 8401 or 8421
	Use BELDEN No. 8430 (Two Conductor-Unshielded)
	8439 (Two Conductor-Shielded)
	8419 (Three Conductor-Shielded)

TRANSISTORS

ITEM No.	ORIG. TYPE	USE	REPLACEMENT DATA		
			DELCO ELECTRIC PART No.	GENERAL ELECTRIC PART No.	INTERNATIONAL RECTIFIER PART No.
Q1	2SA240	FM RF Amp.	DS-41	TR-17	TR-17
Q2	2SA240	FM Converter	DS-41	TR-21	TR-21
Q3		1st FM IF Amplifier	DS-74	GE-11	GE-11
Q4		1st AM-2nd FM IF	DS-25	TR-06	TR-06
Q5		2nd AM-3rd FM IF	DS-74	GE-11	TR-21
Q6		AF Amp.	DS-26	GE-2	TR-05
Q8		Output		TR-23	TR-23

① When replacing, apply silicone grease to both sides of insulator. Tighten mounting screws securely.

POWER RECTIFIERS & SIGNAL DIODES

ITEM No.	MEASURED CURRENT	ORIGINAL Part or Type No.	RECTIFIERS & DIODES	
			GENERAL ELECTRIC PART No.	INTERNATIONAL RECTIFIER PART No.
X1	.002A	4712C-4	GE-504A or 5A4-D	804 or 5A4-D
X2		48207 (1N295)	GE-505 1N295	IN295
X3		15351 ①	1N60	1N60
X4		1N60	1N295	1N295
X5		48207 (1N295)	1N60	1N60
X6		48207-4 ②	1N60	1N542 ②
X7		48207-1 ②	1N60	1N542 ②

① Variable Capacitor Diode. ② Matched pair.

CONTROLS  
All wattages 1/2 watt, or less, unless otherwise listed.

ITEM No.	USE	RESISTANCE	REPLACEMENT DATA				
			ARVIN PART No.	CENTRALAB PART No.	CLAROSTAT PART No.	CTS-IRC PART No.	MALORY PART No.
R1	Volume	20K	69100-24 ③	F2-35K ① SN200	NP-25K-Z ① NML-A-300 ②	R13-120 TN4 ① ②	R103A, SL37 ①, SN200 ② or (UA24A ①) (SN2000 ②)
R2	Tone	50K	69100-25	F2-50K ①, SN200	A47-50K-Z ①, R34-49 or (NP-50K-Z ①, NML-A-300 ②)	R19-123 TM4 ① ② or (CF63 ①, SS6 ②) ③	R103A, SL37 ①, SN200 ② or (UA24A ①) (SN2000 ②)

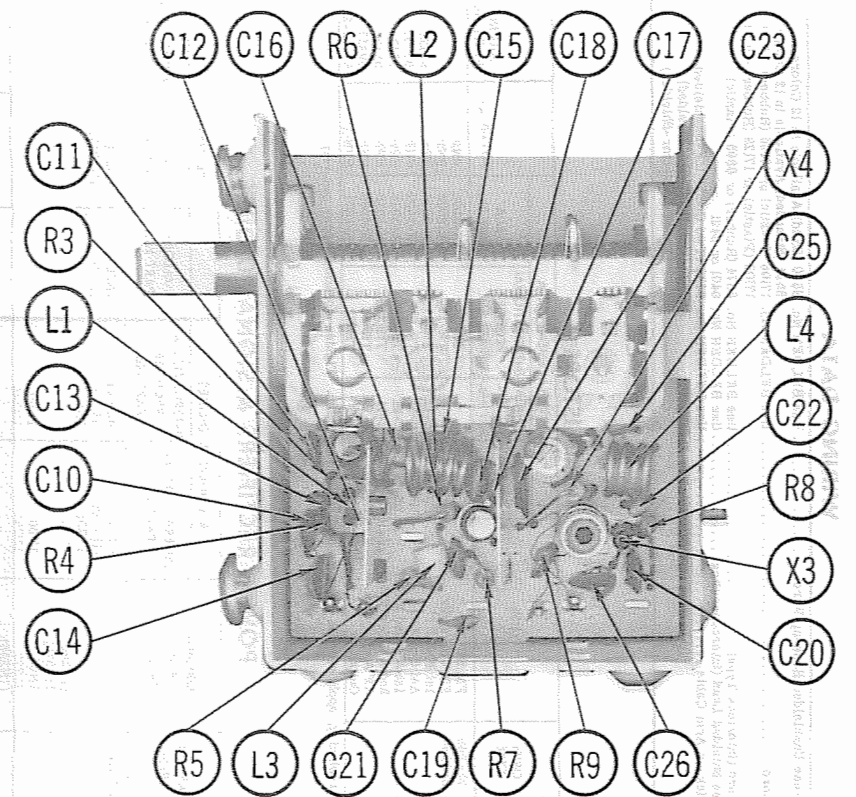
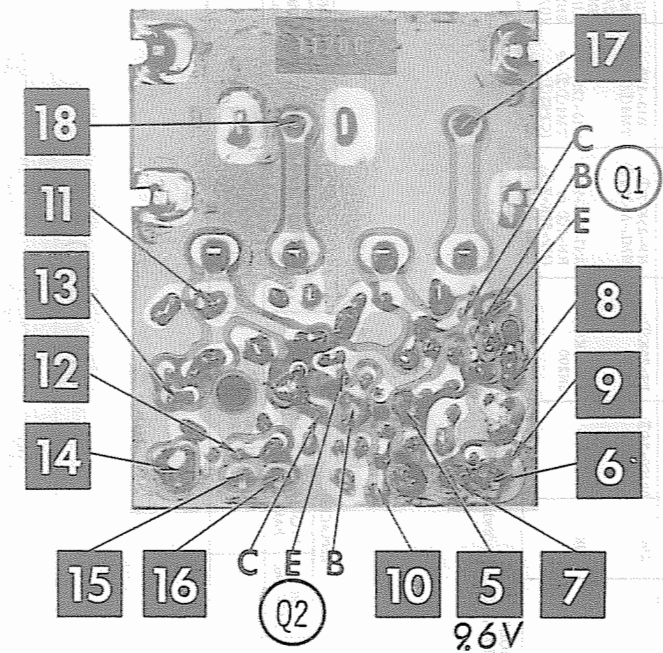
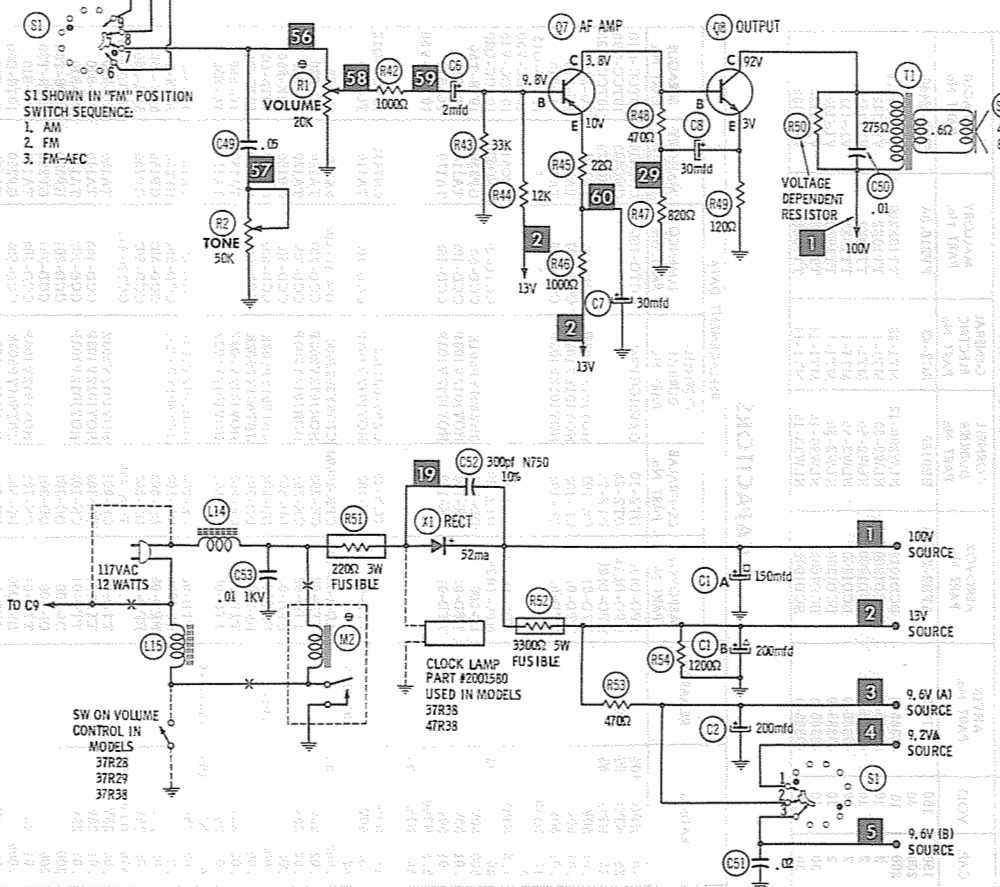
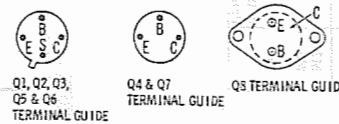
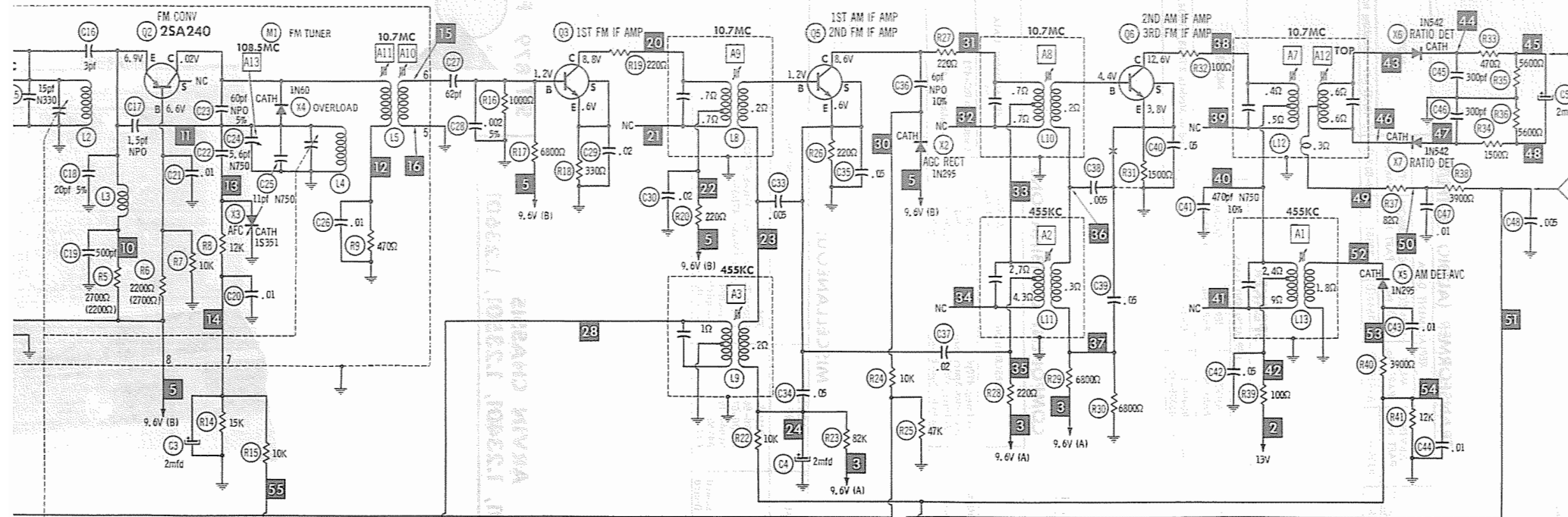
\* "SNAPTROL" ① Use original mounting bracket. ② File flat.  
③ Part #69100-23 (Volume/Switch) used in Models 37R29, 37R29 and 37R30.

RESISTORS (Power and Special)

ITEM No.	RATING	IRC PART No.	REPLACEMENT DATA		RATING	REPLACEMENT DATA	
			WORKMAN PART No.	ARVIN PART No.		WORKMAN PART No.	ARVIN PART No.
R50	VDR			20838-1			
R51	2500 3W Fusible			47727-14			
R52					33000 5W Fusible		44448-30

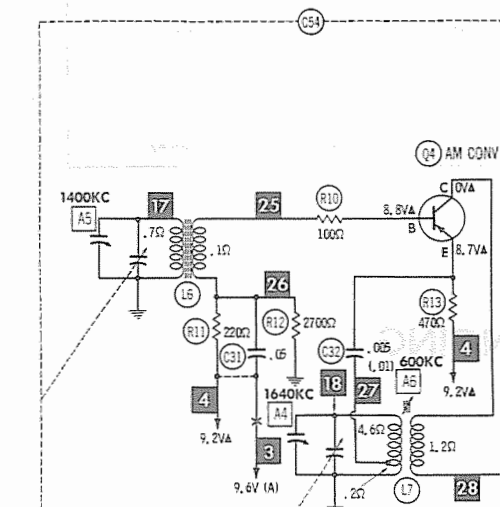
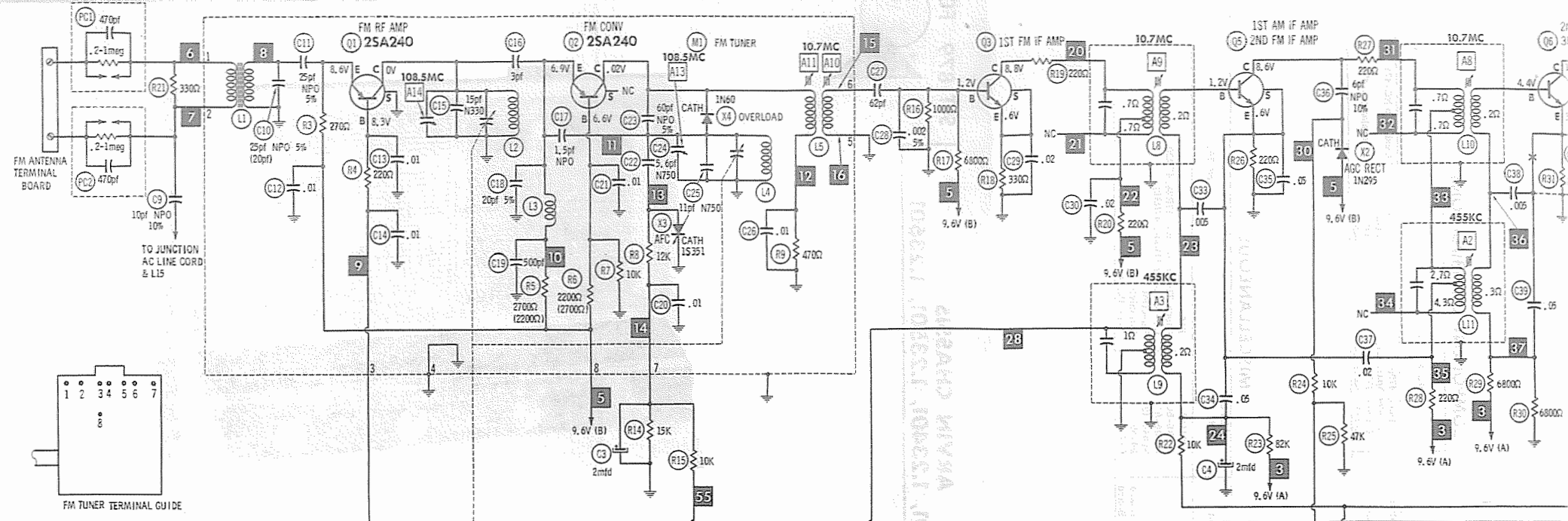
COILS (RF-IF)

ITEM No.	USE	REPLACEMENT DATA		
		ARVIN PART No.	MESSNER Part No.	MILLER PART No.
L1	FM Antenna			
L2	FM IF Coupler (10 turns)			
L3	FM IF Coupler			
L4	1st FM IF			
L5	1st FM IF			
L6	Loopstick	48861-25		
L7	AM Oscillator	45783-24		
L8	2nd FM IF	49386-20		
L9	1st AM IF	49386-16		
L10	3rd FM IF			
L11	2nd AM IF			



ARVIN CHASSIS  
13301, 1.23401, 1.23501, 1.23601





Resistors are 1/2 watt or less and rated 10% or 20% unless otherwise indicated.

Switches viewed from end opposite control knob or actuator unless otherwise indicated.

ALL MEASUREMENTS TAKEN IN "FM" POSITION UNLESS OTHERWISE INDICATED

MEASURED IN AM POSITION

See parts list

1. Voltage measurements taken with vacuum tube voltmeter.

2. All controls set for normal operation, no signal applied.

3. Measured values are from socket pin or terminal to common ground.

4. All terminals viewed from bottom unless otherwise designated.

5. Numbers assigned to terminals may not be found on the unit.

6. Supply voltage maintained at rated value for voltage readings.

7. Resistance measurements not given because of the wide variation in internal resistance of transistor.

A PHOTOFACT STANDARD NOTATION SCHEMATIC

© Howard W. Sams & Co., Inc. 1967

ARVIN CHASSIS  
1.23301, 1.23401, 1.23501, 1.23601

